

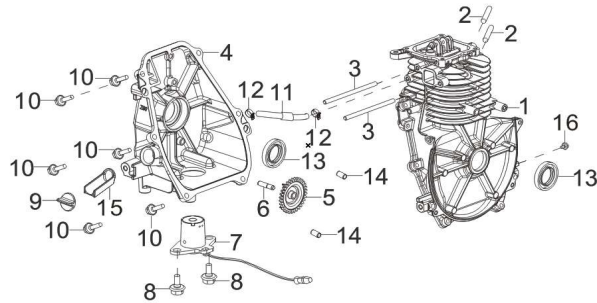
INV1250/R1250ISP-A

Important Information

The service parts list information provided within the Parts Diagram document is all inclusive of the service parts which are presently available for the defined model. Not all individual parts are serviceable at the piece part level. If an itemized part does not have a defined corresponding service part listed, the defined group level service part must be ordered.

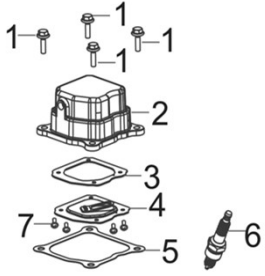
REF.NO.	CAT Part Number	DESCRIPTION	L mm	W mm	H mm	Weight (g)	Q'TY	Q'TY CARB	Q'TY CSA	CAT Group Part Number	CAT Part Name	L mm	W mm	H mm	Weight (g)
	INV1250	Engine					1			INV1250	Engine				

FIG.1 CRANKCASE./COVER SUBASSEMBLY, CRANKCASE (E01)



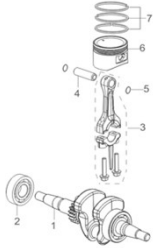
REF.NO.	CAT Part Number	DESCRIPTION	L mm	W mm	H mm	Weight (g)	Q'TY	Q'TY CARB	Q'TY CSA	CAT Group Part Number	CAT Part Name	L mm	W mm	H mm	Weight (g)
E01-1		CRANKCASE SUBASSEMBLY.	255	185	117	1076	\	1	1	589-6110	CRANKCASE GP	255	185	177	1111
E01-2		BOLT	26	5	5	5	2	1	1						
E01-3		BOLT	92	5	5	13	2	1	1						
E01-5		OIL MIX GEAR	51	51	13	6	1	1	1						
E01-6		Oil stirring gear shaft	31	8	8	7	1	1	1						
E01-13		SEAL, OIL	27	27	5	4	2	1	1						
E01-16		CROSS PAN HEAD SCREW	8	8	15	3	1	1	1						
E01-4		COVER, CRANKCASE	200	180	120	539	\	1	1	589-6112	COVER GP-REAR	200	180	120	627
E01-9	501-5076	DIPSTICK SUBASSEMBLY, OIL	72	29	29	7	\	1	1						
E01-14		PIN	14	8	8	2	2	2	2						
E01-10		BOLT	14	14	27	6	6	6	6						
E01-11		Negative pressure tube assembly	225	10	10	20	1	1	1						
E01-12		CLAMP	19	15	8	2	2	2	2						
E01-15		JACKET, RUBBER	75	35	30	18	1	1	1						
E01-7		SENSOR, ENGINE OIL	298	71	44	35	1	1	1	589-6113	SENSOR GP-LEVEL	298	81	44	41
E01-8		BOLT	16	16	19	6	2	2	2						

FIG.2 HEAD SUBASSEMBLY, CYLINDER / PLUG,SPARK (E03)



REF.NO.	CAT Part Number	DESCRIPTION	L mm	W mm	H mm	Weight (g)	Q'TY	Q'TY CARB	Q'TY CSA	CAT Group Part Number	CAT Part Name	L mm	W mm	H mm	Weight (g)
E03-1		BOLT	21	11	11	4	4	4	4	589-6114	COVER GP-CYLINDER HEAD	95	77	43	175
E03-2		COVER SUBASSEMBLY, CYLINDER HEAD	95	77	43	100	1	1	1						
E03-3		GASKET, BREATH GROOVE	57	58	1	0.2	1	1	1						
E03-4		PIECE, BREATH	56	55	7	23	1	1	1						
E03-5	589-6143	GASKET, CYLINDER HEAD COVER	80	78	1	1	1	1	1						
E03-7		CROSS PAN HEAD SCREW	10	6	6	0.7	4	4	4						
E03-6	517-9234	PLUG, SPARK	65	20	16	31	1	1	1						

FIG.3 RING SET,OIL / ROD,CRANKSHAFT CONNETING (E04)



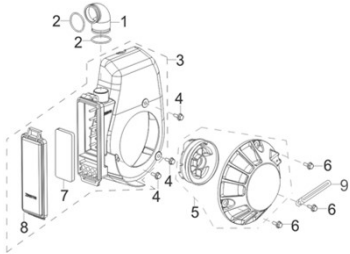
REF.NO.	CAT Part Number	DESCRIPTION	L mm	W mm	H mm	Weight (g)	Q'TY	Q'TY CARB	Q'TY CSA	CAT Group Part Number	CAT Part Name	L mm	W mm	H mm	Weight (g)
E04-1		CRANKSHAFT ASSY.	188	45	60	6240	1	1	1	589-6115	CRANKSHAFT GP	188	130	60	6417
E04-3		ROD, CONNECTING	125	34	14	50	\	1	1						
E04-4		PIN, PISTON	34	10	10	10	1	1	1						
E04-5		CLIP, PISTON PIN	12	10	1	0.1	2	2	2						
E04-6		PISTON	45	45	33	46	\	1	1						
E04-7	589-6145	RING ASSY, PISTON	43	43	5	6	1	1	1						
E04-2	589-6146	BEARING, DEEP GROOVE BALL	40	40	13	65	1	1	1						

FIG.4 TRAIN,VALVE / CAMSHAFT SUBASSEMBLY (E06)



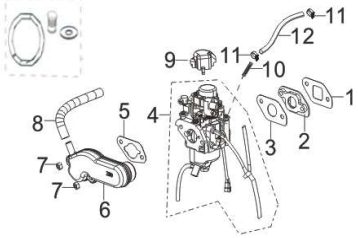
REF.NO.	CAT Part Number	DESCRIPTION	L mm	W mm	H mm	Weight (g)	Q'TY	QTY CARB	QTY CSA	CAT Group Part Number	CAT Part Name	L mm	W mm	H mm	Weight (g)
E06-1	589-6147	CAMSHAFT ASSY.	56	56	21	25	1	1	1	589-6116	VALVE GP	76	33	22	85
E06-2		SPINDLE, CAMSHAFT	30	5	5	4	2	2	2						
E06-3		ROCKER, LOWER	39	13	22	7	\	1	1						
E06-4		ROCKER, LOWER	39	13	22	7	\	1	1						
E06-5		BUSH	10	10	5	2	1	1	1						
E06-6		LIFTER SUBASSEMBLY, VALVE	76	3	3	3	2	2	2						
E06-7		VALVES SET	48	33	17	16	\	2	2						
E06-8		SPRING, VALVE	22	16	16	4	2	2	2						
E06-9		GUIDE, SEAL	10	10	6	0.5	1	1	1						
E06-10		SEAT, VALVE SPRING	16	16	4	2	2	2	2						
E06-11		SHAFT, VALVE ROCKER	39	3	3	4	1	1	1						
E06-12		ROCKER SUBASSEMBLY, VALVE	42	20	12	11	2	2	2						

FIG.5 STARTER,RECOIL (E07)



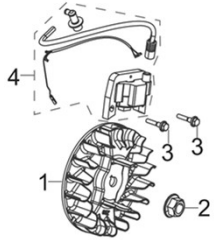
REF.NO.	CAT Part Number	DESCRIPTION	L mm	W mm	H mm	Weight (g)	Q'TY	QTY CARB	QTY CSA	CAT Group Part Number	CAT Part Name	L mm	W mm	H mm	Weight (g)
E07-1		TUBE, INTAKE	55	41	27	17	1	1	1	589-6117	PULLEY GP-CSHAFT	240	211	107	448
E07-2		CLIP	33	33	4	2	2	2	2						
E07-3		SHROUD	240	211	68	231	1	1	1						
E07-4		BOLT	21	11	11	4	3	3	3						
E07-5	589-6148	STARTER ASSY, RECOIL	145	145	39	164	1	1	1						
E07-6		BOLT	17	11	11	4	3	3	3						
E07-9		CLIP	100	12	2	5	1	1	1						
E07-7	589-6149	ELEMENT, AIR CLEANER	103	48	16	4	1	1	1						
E07-8	589-6150	COVER, AIR CLEANER CASE	167	55	20	39	1	1	1						

FIG.6 CARBURETOR ASSY. (E09)



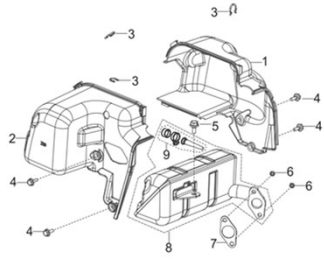
REF.NO.	CAT Part Number	DESCRIPTION	L mm	W mm	H mm	Weight (g)	Q'TY	Q'TY CARB	Q'TY CSA	CAT Group Part Number	CAT Part Name	L mm	W mm	H mm	Weight (g)
E09-5	589-6151	GASKET, AIR CLEANER	56	35	1	1	1	1	1	589-6118	BREATHER GP	120	38	55	59
E09-6		DUCT, AIR CLEANER INTAKE	120	32	55	43	1	1	1						
E09-7		NUT	10	11	6	2	2	2	2						
E09-8		TUBE, BREATHER	82	46	11	10	1	1	1						
E09-1		GASKET, CARBURETOR	61	34	1	0.1	1	1	1	589-6119	GASKET GP	61	34	7	6.2
E09-2		PLATE, CARBURETOR INSULATOR	60	35	5	6	1	1	1						
E09-3		GASKET, CARBURETOR INSULATOR	60	34	1	0.1	1	1	1						
E09-4		CARBURETOR ASSY.	115	84	50	317	1	1	1	589-6120	CARBURETOR GP (BASIC)	120	84	50	332
E09-9		CAP	39	44	31	4	1	1	1						
E09-10	522-2704	STRAINER, FUEL	19	5	5	0.01	\	1	1						
E09-11		CLAMP	19	15	8	2	2	2	2						
E09-12		TUBE, FUEL	100	10	10	8	\	1	1						
E09-13	589-6249	HIGH ALTITUDE KIT (3000-6000ft)													
	589-6144	HIGH ALTITUDE KIT (6000-8000ft)													

FIG.7 FLYWHEEL / IMPELLER / STARTER PULLEY / IGNITION COIL (E10)



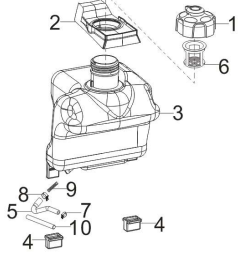
REF.NO.	CAT Part Number	DESCRIPTION	L mm	W mm	H mm	Weight (g)	Q'TY	Q'TY CARB	Q'TY CSA	CAT Group Part Number	CAT Part Name	L mm	W mm	H mm	Weight (g)
E10-1		FLYWHEEL SUBASSEMBLY	134	134	51	474	1	1	1	589-6121	FLYWHEEL GP	134	134	51	486
E10-2		NUT	21	21	11	12	1	1	1						
E10-3		BOLT	14	14	27	6	2	2	2						
E10-4		COIL, IGNITION	353	38	61	233	1	1	1	589-6122	COIL GP-IGNITION	353	38	61	248

FIG.8 MUFFLER ASSY. (F02)



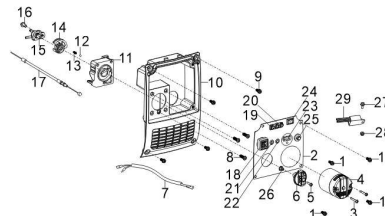
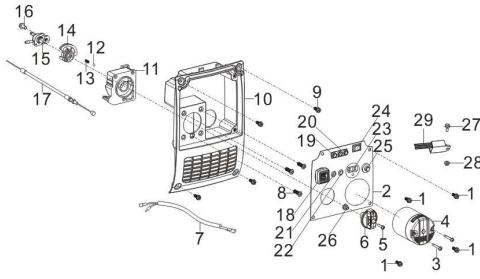
REF.NO.	CAT Part Number	DESCRIPTION	L mm	W mm	H mm	Weight (g)	Q'TY	Q'TY CARB	Q'TY CSA	CAT Group Part Number	CAT Part Name	L mm	W mm	H mm	Weight (g)
F02-1		SHROUD, MUFFLER	200	170	90	136	1	1	1	589-6123	INSULATION GP-MUFFLER	200	170	215	315
F02-2		SHROUD, MUFFLER	200	170	125	161	1	1	1						
F02-3		COLLAR	15	13	1.5	0.5	3	3	3						
F02-4		BOLT	17	14	14	4	4	4	4						
F02-5		BOLT	16	16	19	6	1	1	1	589-6124	MUFFLER GP	180	180	157	1082
F02-6		NUT	10	11	6	2	2	2	2						
F02-7	589-6153	GASKET, EXHAUST OUTLET	55	30	1.5	2	\	1	1						
F02-8		MUFFLER ASSY.	180	180	157	1045	\	1	1						
F02-9	530-1183	COLLECTOR, SPARK	45	40	32	33	1	1	1						

FIG.10 TANK, FUEL (F03)

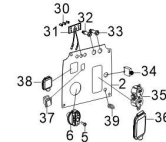


REF.NO.	CAT Part Number	DESCRIPTION	L mm	W mm	H mm	Weight (g)	Q'TY CARB	Q'TY CSA	CAT Group Part Number	CAT Part Name	L mm	W mm	H mm	Weight (g)
F03-1		COVER, FUEL TANK	64	64	50	52	\	1						
F03-6		STRAINER, FUEL	44	44	72	11	\	1	USE CSA CAP AS SERVICE PART	CAP GP-FUEL	108	64	72	63
F03-1		COVER, FUEL TANK	64	64	50	52	\	1						
F03-6		STRAINER, FUEL	44	44	72	11	\	1	589-6125	CAP GP-FUEL	108	64	72	63
F03-2		SLEEVE, FILLING OIL HOLE RUBBER	143	82	35	70	1	1						
F03-3		TANK, FUEL	195	205	240	755	\	1						
F03-4		SLEEVE, FUEL TANK RUBBER	31	22	24	8	2	2						
F03-5		TUBE, FUEL	110	30	85	14	1	1	USE CSA CERTIFIED VERSION AS SERVICE GROUP FOR ALL MODELS	TANK GP-FUEL	195	205	250	861
F03-7		CLAMP	15	11	8	1	1	1						
F03-8		CLAMP	19	11	8	2	1	1						
F03-9		ELEMENT, STRAINER	52	6	6	1	1	1						
F03-10		JACKET, RUBBER	6	1.2	1.2	2	1	1						
F03-2		SLEEVE, FILLING OIL HOLE RUBBER	143	82	35	70	1	1						
F03-3		TANK, FUEL	195	205	240	755	\	1						
F03-4		SLEEVE, FUEL TANK RUBBER	31	22	24	8	2	2						
F03-5		TUBE, FUEL	110	30	85	14	1	1	589-6126	TANK GP-FUEL	195	205	250	861
F03-7		CLAMP	15	11	8	1	1	1						
F03-8		CLAMP	19	11	8	2	1	1						
F03-9		ELEMENT, STRAINER	52	6	6	1	1	1						
F03-10		JACKET, RUBBER	6	1.2	1.2	2	1	1						

FIG.11 Control panel components, Panel seat (F05)



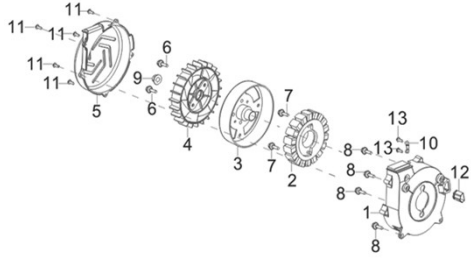
CARB状态



CSA状态

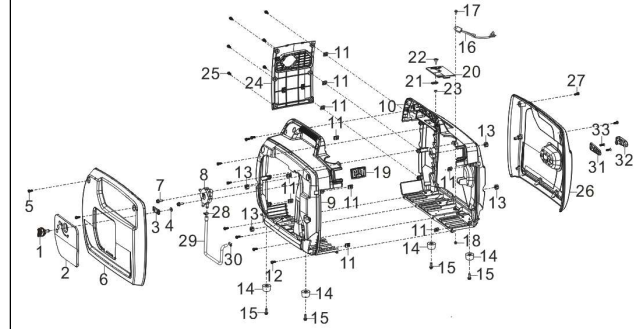
REF.NO.	CAT Part Number	DESCRIPTION	L mm	W mm	H mm	Weight (g)	Q'TY	Q'TY CARB	Q'TY CSA	CAT Group Part Number	CAT Part Name	L mm	W mm	H mm	Weight (g)
F05-1		SCREW, CROSS GROOVE PAN	18	8	8	2	4	4	4						
F05-2		PANEL SUBASSEMBLY, CONTROL	159	147	100	507	1	1	\						
F05-8		CROSS COUNTERSUNK HEAD TAPPING SCREW	8	8	18	3	3	3	3	589-6127	PANEL GP-CONTROL (BASIC)	260	175	105	732
F05-9		HEX STEP BOLT	19	10	10	5	4	4	4						
F05-10		SEAT, PANEL	260	175	70	217	1	1	1						
F05-1		SCREW, CROSS GROOVE PAN	18	8	8	2	4	4	4						
F05-2		PANEL SUBASSEMBLY, CONTROL	159	147	100	482	\	\	1						
F05-8		CROSS COUNTERSUNK HEAD TAPPING SCREW	8	8	18	3	3	3	3	589-6142	PANEL GP-CONTROL (BASIC)	159	147	105	732
F05-9		HEX STEP BOLT	19	10	10	5	4	4	4						
F05-10		SEAT, PANEL	260	175	70	217	1	1	1						
F05-5	589-6155	CROSS PAN HEAD SCREW	8	8	19	2	1	1	1						
F05-6		KNOB	42	42	42	11	1	1	1						
F05-11		SWITCH SUBASSEMBLY	69	66	40	53	1	1	1						
F05-12		BALL, STEEL	5	5	53	2	1	1	1	589-6128	SWITCH GP	400	66	53	153
F05-13		SPRING, STOPPER ADJUSTING	4	4	13	0.1	1	1	1						
F05-14		LIMIT PLATE,CHOKE CABLE STROKE	47	36	13	9	1	1	1						
F05-15		COCK ASSY, FUEL	57	52	25	45	1	1	1						
F05-16		BOLT	18	14	14	5	1	1	1						
F05-17		HANDLE SUBASSEMBLY, CHOKE	400	11	10	25	1	1	1						
F05-7	589-6156	HARNESS, CONTROL PANEL WIRING	480	40	25	150	1	1	\						
F05-7	589-6154	HARNESS, CONTROL PANEL WIRING	480	40	25	150	\	\	1						
F05-18	530-1194	SOCKET SUBASSEMBLY, D.C	45	39	27	25	1	1	\						
F05-19		INDICATOR SEAT	15	6	6	1	3	3	\	530-1201	LIGHT AS	58	10	9	5
F05-20		INDICATORS	58	10	9	2	1	1	\						
F05-21		PARALLEL POST	44	17	24	4	1	1	\	589-6158	RECEPTACLE GP	30	30	15	25
F05-22		PARALLEL POST	44	17	24	4	1	1	\						
F05-23	589-6160	SOCKET SUBASSEMBLY, POWER SUPPLY	71.5	40	37	23	1	1	\						
F05-24		SWITCH SUBASSEMBLY	25	19	30	5	1	1	\						
F05-25	589-6161	PROTECTOR, OVERCURRENT	47	28	19	16	1	1	\						
F05-26	530-1193	TERMINAL SUBASSEMBLY, GROUNDING	24	10	11	10	1	1	\						
F05-3		HEX CENTER PILLAR PAN HEAD SCREW	24	7	7	3	2	2	\						
F05-4		CO ALARM	60	60	38	69	1	1	\	589-6195	DETECTOR-CO	60	60	38	75
F05-27		BOLT	21	11	11	4	1	1	\						
F05-28		NUT	11	11	5	2	1	1	\						
F05-29	589-6163	CO CONTROLLER	52	35	16	16	1	1	\						
F05-30		Indicator seat	15	6	6	1	\	\	3	530-1201	LIGHT AS	58	10	9	5
F05-31		Indicator assy	58	10	9	2	\	\	1						
F05-32		PARALLEL POST	44	17	24	4	\	\	1	589-6158	RECEPTACLE GP	30	30	15	25
F05-33		PARALLEL POST	44	17	24	4	\	\	1						
F05-34	589-6161	PROTECTOR, OVERCURRENT	29.4	15	47	13	\	\	1						
F05-35	501-5288	SOCKET SUBASSEMBLY, POWER SUPPLY	90	40	37	96	\	\	1						
F05-36	511-8898	RAIN COVER RECEPTACLE	93	47	19	19	\	\	1						
F05-37		SWITCH SUBASSEMBLY	25	19	30	5	\	\	1						
F05-38	530-1194	SOCKET SUBASSEMBLY, D.C	45	39	27	25	\	\	1						
F05-39	530-1193	TERMINAL SUBASSEMBLY, GROUNDING	24	10	11	10	\	\	1						

FIG.12 ROTOR/STATOR (F06)



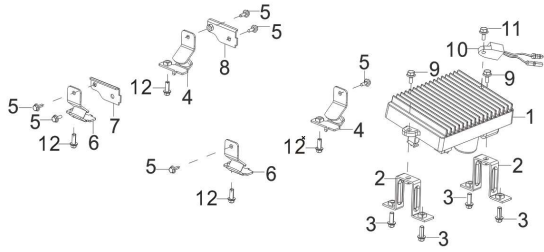
REF.NO.	CAT Part Number	DESCRIPTION	L mm	W mm	H mm	Weight (g)	Q'TY	Q'TY CARB	Q'TY CSA	CAT Group Part Number	CAT Part Name	L mm	W mm	H mm	Weight (g)
F06-1		SHROUD, MOTOR	173	178	55	146	1	1	1	USE CSA CERTIFIED ALT AS SERVICE GROUP FOR ALL MODELS	ALTERNATOR GP	195	195	230	2303
F06-2		STATOR SUBASSEMBLY, MAGNETO	715	119	25	970	\	1	\						
F06-3		CASE SUBASSEMBLY, MAGNETO ROTOR	140	140	38	921	1	1	1						
F06-4		IMPELLER	143	143	27	102	\	1	1						
F06-5		COVER, SHROUD UPPER	195	157	42	84	1	1	1						
F06-6		BOLT	20	15	15	4	2	2	2						
F06-7		BOLT	31	11	11	5	2	2	2						
F06-8		BOLT	17	11	11	3	\	4	4						
F06-9		NUT	4	21	12	21	1	1	1						
F06-10		WIRE PLATE	45	31	30	4	1	1	1						
F06-11		SELFTAPPING SCREW	5	5	20	3	\	5	5						
F06-12		RUBBER COVER	27	22	17	2	1	1	1						
F06-13		CROSS COUNTERSUNK HEAD TAPPING SCREW	5	5	13	2	2	2	2						
F06-1		SHROUD, MOTOR	173	178	55	146	1	1	1	589-6132	ALTERNATOR GP	195	195	230	2303
F06-2		STATOR SUBASSEMBLY, MAGNETO	715	119	25	970	\	\	1						
F06-3		CASE SUBASSEMBLY, MAGNETO ROTOR	140	140	38	921	1	1	1						
F06-4		IMPELLER	143	143	27	102	\	1	1						
F06-5		COVER, SHROUD UPPER	195	157	42	84	1	1	1						
F06-6		BOLT	20	15	15	4	2	2	2						
F06-7		BOLT	31	11	11	5	2	2	2						
F06-8		BOLT	17	11	11	3	\	4	4						
F06-9		NUT	4	21	12	21	1	1	1						
F06-10		WIRE PLATE	45	31	30	4	1	1	1						
F06-11		SELFTAPPING SCREW	5	5	20	3	\	5	5						
F06-12		RUBBER COVER	27	22	17	2	1	1	1						
F06-13		CROSS COUNTERSUNK HEAD TAPPING SCREW	5	5	13	2	2	2	2						

FIG.13 Shell, Decorative plates (F31)



REF.NO.	CAT Part Number	DESCRIPTION	L mm	W mm	H mm	Weight (g)	Q'TY	Q'TY CARB	Q'TY CSA	CAT Group Part Number	CAT Part Name	L mm	W mm	H mm	Weight (g)
F31-1		KNOB, MAINTAINANCE DOOR	47	47	38	13	1	1	1						
F31-2		LEFT MAINTAINANCE DOOR	178	172	15	95	1	1	1	589-6133	DOOR GP	178	172	60	111
F31-3		BLOCK	46	17	6	3	1	1	1						
F31-4		CLIP, SPRING	14	14	1	0.1	1	1	1						
F31-5		HEX STEP BOLT	10	10	19	5	2	2	2						
F31-6		COVER BOARD, LEFT	445	340	55	402	1	1	1	589-6134	COVER GP-LH	445	340	55	412
F31-9		SHELL, RIGHT	445	415	140	785	1	1	1						
F31-10		SHELL, LEFT	445	417	140	700	1	1	1						
F31-12		HEX STEP BOLT	10	10	19	5	8	8	8						
F31-13		SLEEVE, FUEL TANK RUBBER	31	24	22	8	4	4	4						
F31-14		SEAT, ENGINE FRAME SHOCK ABSORPTION	30	30	20	12	4	4	4						
F31-15		NUT	18	14	14	5	\	4	4	589-6135	COVER GP-CENTRAL	445	417	300	1672
F31-18		NUT	11	11	5	2	1	1	1						
F31-19		PLATE, FRONT PANEL DECORATED	62	40	6	8	1	1	1						
F31-20	589-6164	SPARK PLUG MAINTAINANCE DOOR	104	69	10	30	1	1	1						
F31-21		BLOCK	30	18	6	3	1	1	1						
F31-22		HEX STEP BOLT	20	16	16	10	1	1	1						
F31-23		NYLON NUT	9	8	5	3	1	1	1						
F31-11		CLIP NUT	19	10	12	5	10	10	10						
F31-24		COVER, MUFFLER SIDE	255	170	25	160	1	1	1	589-6136	COVER GP-REAR	255	170	25	240
F31-25		HEX STEP BOLT	19	10	10	5	6	6	6						
F31-16		REGULATOR, VOLTAGE	275	36	22	96	1	1	1	589-6137	REGULATOR GP-VOLTAGE	275	36	22	100
F31-17		BOLT	21	11	11	4	1	1	1						
F31-7		BOLT	21	11	11	4	2	2	2						
F31-8		PUMP ASSY, GASOLINE	85	85	25	105	1	1	1	589-6138	PUMP GP-FUEL	90	85	32	123
F31-28		CLAMP	18	12	8	2	1	1	1						
F31-29		TUBE, FUEL	90	10	32	7	1	1	1						
F31-30		CLAMP	15	11	8	1	1	1	1						
F31-26		COVER BOARD, RIGHT	445	340	55	539	1	1	1	589-6139	COVER GP-RH	445	340	55	594
F31-27		HEX STEP BOLT	10	10	19	5	2	2	2						
F31-31		GUIDE SUBASSEMBLY, STARTING ROPE	75	42	10	16	\	1	1						
F31-32		HANDLE, RECOIL STARTER CABLE	75	23	34	23	\	1	1						
F31-33			17	10	10	3	2	2	2						
F31-34			71	34	19	16	\	1	1						

FIG.14 Bottom plate, Inverter, Inverter mounting frame (F32)

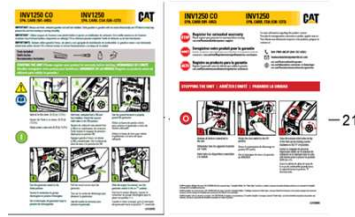


REF.NO.	CAT Part Number	DESCRIPTION	L mm	W mm	H mm	Weight (g)	Q'TY	Q'TY CARB	Q'TY CSA	CAT Group Part Number	CAT Part Name	L mm	W mm	H mm	Weight (g)
F32-1	589-6165	INVERTOR	200	120	70	1215	1	1	1	589-6140	FRAME GP-ENGINE	155	125	70	508
F32-2		ASSEMBLING FRAME, INVERTER	85	22	55	68	2	2	2						
F32-3		BOLT	18	14	14	5	\	4	4						
F32-4		CUSHION, ENGINE FRAME RIGHT	73	53	28	56	2	2	2						
F32-5		BOLT	18	14	14	5	\	6	6						
F32-6		CUSHION, ENGINE FRAME LEFT	73	53	28	56	2	2	2						
F32-7		Mounting bracket	66	28	9	30	1	1	1						
F32-8		Mounting bracket	66	28	9	30	1	1	1						
F32-9		BOLT	14	14	27	6	2	2	2						
F32-12		BOLT	18	14	14	5	4	4	4						
F32-10		PROTECTOR, OIL	245	26	14	33	1	1	1	589-6166	oil protector	245	26	15	37
F32-11		BOLT	20	15	15	4	1	1	1						

FIG.15 DECAL GROUP



REF.NO.	CAT Part Number	DESCRIPTION	L mm	W mm	H mm	Weight (g)	Q'TY	Q'TY CARB	Q'TY CSA	CAT Group Part Number	CAT Part Name	L mm	W mm	H mm	Weight (g)
7		Brand decal	106	65			2	2	2	589-6152	FILM GP (BRAND)	165	65	5	30
8		Brand decal	165	40			2	2	2						
9		Brand decal	49	30			1	1	1						
5		Warning decal	152	46			1	1	1	589-6157	FILM GP (SAFETY)	202	125	8	50
6		Warning decal	131	43			1	1	1						
18		Hot warning decal	70	20			1	1	1						
12		Warning decal	163	75			1	1	1						
13		CO decal	200	69			1	1	1						
16		CP65 decal	85	83			1	1	1						
4		Genral warning tag	202	125			1	1	1	589-6162	FILM GP (INFORMATION)	257	45	4	20
1		Data decal	85	45			1	1	1						
2		QSG	257	43			1	1	1						
15		QR contact decal	70	20			1	1	1						
3		CSA decal	118	45			1	\	1						
17		Regulation decal	41	8			1	\	1						



	CAT Part Number	DESCRIPTION 英文名	L mm	W mm	H mm	Weight (g)	Q'TY 数量	Q'TY 数量 CARB	Q'TY 数量 CSA	CAT Group Part Number	CAT Part Name	L mm	W mm	H mm	Weight (g)
19	589-6244	BOX, PACKING	515	365	460	1338	1	1	\						
20	589-6245	BOX, PACKING	515	365	460	1338	1	\	1						
21			283	209			1	1	1						
22		SCREW-DRIVER	200	35	35	100	1	1	1						
23		SLEEVE	180	20	20	95	1	1	1	501-5449	TOOL GP	230	120	40	300
24		ROD, FORCING	150	8	8	56	1	1	1						
25		BAG, TOOL	273	110	1	16	1	1	1						
26		FUNNEL, FILLING OIL	102	80	80	15	1	1	1						
27			131	40	20	12	1	1	1	589-6141	FILLER GP-OIL				
30			45	28	28	8	1	1	1						
28	517-9204	OWNER'S MANUAL	285	210	6	105	1	1	1						
29		OIL	195	105	53	527	1	1	1						