

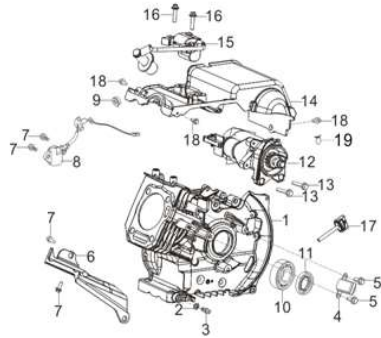
INV4000E/R3000IE-A

Important Information

The service parts list information provided within the Parts Diagram document is all inclusive of the service parts which are presently available for the defined model. Not all individual parts are serviceable at the piece part level. If an itemized part does not have a defined corresponding service part listed, the defined group level service part must be ordered.

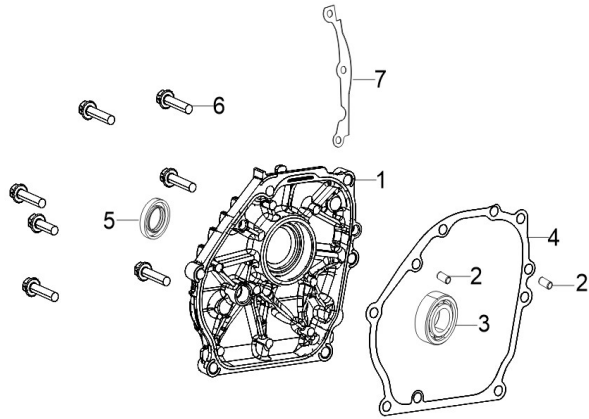
REF.NO.	CAT Part Number	DESCRIPTION	L mm	W mm	H mm	Weight (g)	Q'TY	Q'TY CARB	Q'TY CSA	CAT Group Part Number	CAT Part Name	L mm	W mm	H mm	Weight (g)
	INV4000	Engine					1			INV4000	Engine				

FIG.1 CRANKCASE./COVER SUBASSEMBLY, CRANKCASE (E01)



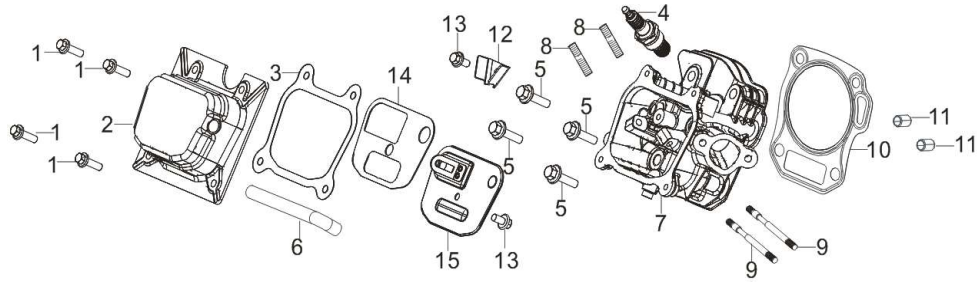
REF.NO.	CAT Part Number	DESCRIPTION	L mm	W mm	H mm	Weight (g)	Q'TY	Q'TY CARB	Q'TY CSA	CAT Group Part Number	CAT Part Name	L mm	W mm	H mm	Weight (g)
E01-10		BEARING, DEEP GROOVE BALL	62	62	18	220	1	1	1	589-6167	BEARING GP -B	108	62	18	231
E01-11		SEAL, OIL	46	46	6	11	1	1	1						
E01-1		CRANKCASE SUBASSEMBLY.	228	270	150	2747	\	1	1						
E01-2	501-5404	WASHER, FLAT	16	16	1.5	1	1	1	1						
E01-3		BOLT, DRAIN PLUG	15	15	26	15	1	1	1						
E01-4		TRIGGER	330	49	34	40	1	1	1	589-6168	CRANKCASE GP	228	270	150	2914
E01-5		BOLT	11	11	20	5	2	2	2						
E01-6		SHIELD, CRANKCASE SIDE	190	140	80	95	1	1	1						
E01-7		BOLT	14	14	20	6	2	2	2						
E01-7		BOLT	14	14	20	6	2	2	2						
E01-8		SENSOR, ENGINE OIL	150	49	34	41	1	1	1	589-6169	SENSOR GP-LEVEL	150	49	34	80
E01-9		NUT	20	18	10	7	1	1	1						
E01-12		MOTOR ASSY, STARTING	100	85	160	1536	1	1	1	589-6170	MOTOR GP-STARTER	100	85	160	1544
E01-13		BOLT	14	14	35	8	2	2	2						
E01-14		COVER, PROTECTOR	278	162	110	174	1	1	1						
E01-18		BOLT	18	14	14	5	3	3	3	589-6171	SHIELD GP	278	162	110	179
E01-15		COIL, IGNITION	485	50	56	286	1	1	1						
E01-16		BOLT	34	13	13	9	2	2	2	589-6172	COIL GP-IGNITION	485	50	56	295
E01-17	501-5076	DIPSTICK SUBASSEMBLY, OIL	68	30	30	8	1	1	1						
E01-19							1	1	1						

FIG.2 COVER SUBASSEMBLY, CRANKCASE (E02)



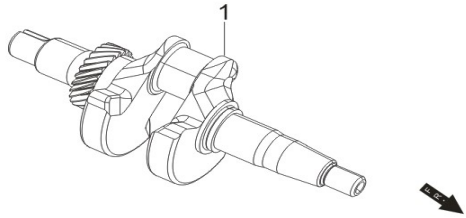
REF.NO.	CAT Part Number	DESCRIPTION	L mm	W mm	H mm	Weight (g)	Q'TY	Q'TY CARB	Q'TY CSA	CAT Group Part Number	CAT Part Name	L mm	W mm	H mm	Weight (g)
E02-1		COVER, CRANKCASE	190	180	35	646	\	1	1	589-6173	COVER GP-REAR	190	180	35	752
E02-2		PIN	8	8	12	3	2	2							
E02-4	589-6213	GASKET, CRANKCASE	176	190	0.5	4	1	1							
E02-7		CLOSING PLATE	175	46	4	54	\	1							
E02-6		BOLT	17	17	40	16	6	6	6	589-6174	BEARING GP -B	92	50	14	138
E02-3		BEARING, DEEP GROOVE BALL	50	50	14	127	1	1	1						
E02-5		SEAL, OIL	42	42	6	11	1	1	1						

FIG.3 HEAD SUBASSEMBLY, CYLINDER / PLUG, SPARK (E03)



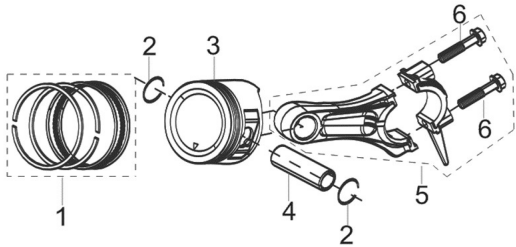
REF.NO.	CAT Part Number	DESCRIPTION	L mm	W mm	H mm	Weight (g)	Q'TY	Q'TY CARB	Q'TY CSA	CAT Group Part Number	CAT Part Name	L mm	W mm	H mm	Weight (g)
E03-1		BOLT	14	14	27	6	4	1	1	589-6175	COVER GP-CYL HD	133	42	112	373
E03-2		COVER SUBASSEMBLY, CYLINDER HEAD	133	42	112	288	1	1	1						
E03-3	589-6214	GASKET, CYLINDER HEAD COVER	121	105	1	3	1	1	1						
E03-14		GASKET, BREATH GROOVE	100	70	1	3	1	1	1						
E03-15		PIECE, BREATH	100	70	14	55	1	1	1						
E03-4	511-7296	PLUG, SPARK	82	20	22	61	1	1	1						
E03-6	589-6216	TUBE, BREATHER	95	23	23	14	1	1	1						
E03-5		BOLT, CYLINDER HEAD	17	17	62	26	4	4	4	589-6176	HEAD GP-CYL BSC	155	132	85	958
E03-7		HEAD SUBASSEMBLY, CYLINDER	155	132	85	872	\	1	1						
E03-8		BOLT	34	8	8	11	2	2	2						
E03-9		BOLT	105	5	5	21	2	2	2						
E03-10	511-7252	GASKET, CYLINDER HEAD	111	100	1.5	14	\	1	1						
E03-11		PIN	11	11	14	1	2	2	2						
E03-12		LIMITER	36	16	20	10	1	1	1						
E03-13		BOLT	18	14	14	5	2	2	2						

FIG.4 RING SET,OIL / ROD,CRANKSHAFT CONNETING (E04)



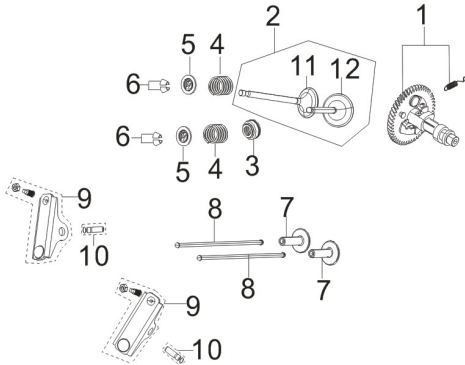
REF.NO.	CAT Part Number	DESCRIPTION	L mm	W mm	H mm	Weight (g)	Q'TY	Q'TY CARB	Q'TY CSA	CAT Group Part Number	CAT Part Name	L mm	W mm	H mm	Weight (g)
E04-1	589-6218	CRANKSHAFT ASSY.	225	75	90	1628	1	1	1						

FIG.5 RING SET,OIL / ROD,CRANKSHAFT CONNETING (E05)



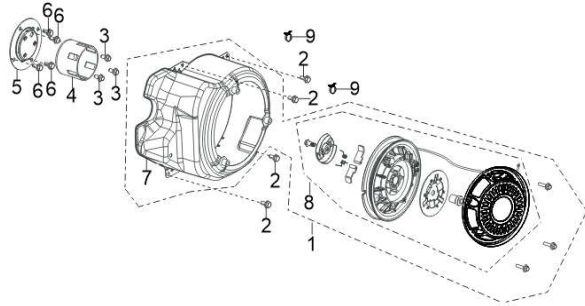
REF.NO.	CAT Part Number	DESCRIPTION	L mm	W mm	H mm	Weight (g)	Q'TY	Q'TY CARB	Q'TY CSA	CAT Group Part Number	CAT Part Name	L mm	W mm	H mm	Weight (g)
E05-1	589-6219	RING ASSY, PISTON	70	70	5	11	\	1	1	589-6177	PISTON GP	150	95	74	346
E05-2		CLIP, PISTON PIN	20	19	1	0.05	2	2	2						
E05-3		PISTON	70	70	45	151	\	1	1						
E05-4		PIN, PISTON	18	18	55	42	1	1	1						
E05-5		ROD, CONNECTING	90	25	135	141	\	1	1						

FIG.6 TRAIN,VALVE / CAMSHAFT SUBASSEMBLY (E06)



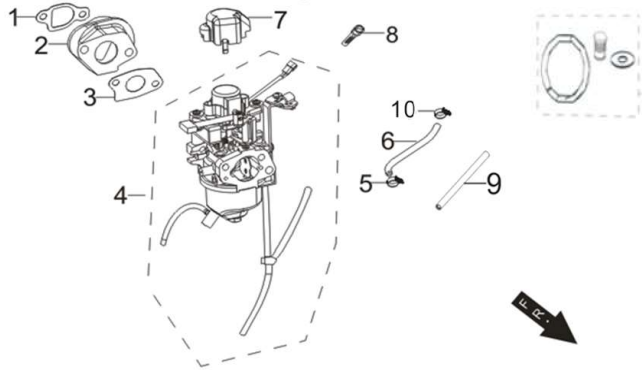
REF.NO.	CAT Part Number	DESCRIPTION	L mm	W mm	H mm	Weight (g)	Q'TY	Q'TY CARB	Q'TY CSA	CAT Group Part Number	CAT Part Name	L mm	W mm	H mm	Weight (g)
E06-1	589-6220	CAMSHAFT ASSY.	90	90	100	251	1	1	1						
E06-2		VALVES SET	48	25	72	41	1	1	1	589-6178	VALVE GP	90	50	145	288
E06-3		GUIDE, SEAL	21	21	9	28	1	1	1						
E06-4		SPRING, VALVE	31	20	20	6	2	2	2						
E06-5		SEAT, VALVE SPRING	20	20	9	6	2	2	2						
E06-6		CLAMP, VALVE LOCK	8	5	5	0.5	4	4	4						
E06-7		TAPPET, VALVE	36	23	23	20	2	2	2						
E06-8		LIFTER, VALVE	145	5	5	14	2	2	2						
E06-9		ROCKER SUBASSEMBLY, VALVE	55	27	19	36	2	2	2						
E06-10		ROCKER ARM, VALVE	28	8	8	6	2	2	2						
E06-11		VALVE, EXHAUST	72	23	23	20	1	1	1						
E06-12		VALVE, INTAKE	72	25	25	21	1	1	1						

FIG.7 STARTER,RECOIL (E07)



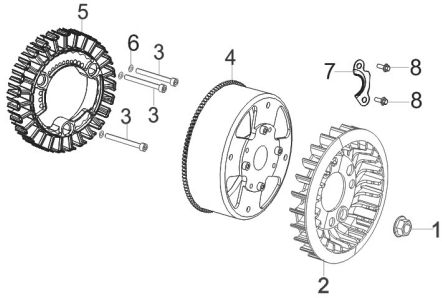
REF.NO.	CAT Part Number	DESCRIPTION	L mm	W mm	H mm	Weight (g)	Q'TY	Q'TY CARB	Q'TY CSA	CAT Group Part Number	CAT Part Name	L mm	W mm	H mm	Weight (g)
E07-1	589-6221	STARTER, RECOIL	350	235	145	1456	\	1	1						
E07-3		BOLT	14	14	16	3	3	3	3	589-6179	PULLEY GP	115	115	60	242
E07-4		PULLEY,STARTER	65	65	45	137	1	1	1						
E07-5		SEAT, STARTER CUP	115	115	15	96	1	1	1						
E07-6		BOLT	18	14	14	5	4	4	4						
E07-7		SHROUD	350	235	120	816	1	1	1						
E07-2		BOLT	18	14	14	5	4	4	4						
E07-8	589-6222	STARTER ASSY, RECOIL	190	190	38	728	1	1	1						
E07-9							2	2	2						

FIG.8 CARBURETOR ASSY. (E09)



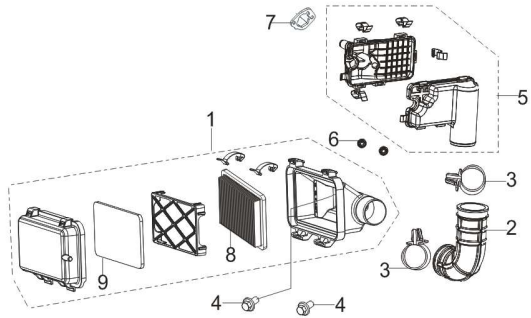
REF.NO.	CAT Part Number	DESCRIPTION	L mm	W mm	H mm	Weight (g)	Q'TY	Q'TY CARB	Q'TY CSA	CAT Group Part Number	CAT Part Name	L mm	W mm	H mm	Weight (g)
E09-1		GASKET, CARBURETOR INSULATOR	57	36	0.5	1	1	1	1	589-6180	GASKET GP	79	62	22	33
E09-2		PLATE, CARBURETOR INSULATOR	79	62	20	31	1	1	1						
E09-3	511-7269	GASKET, CARBURETOR	60	35	1	0.1	1	1	1						
E09-4	589-6224	CARBURETOR ASSY.	130	95	63	344	\	1	1	589-6181	CARBURETOR GP (BASIC)	130	95	75	383
E09-5		CLAMP	19	8	19	2	1	1	1						
E09-6		TUBE, FUEL	282	30	10	23	1	1	1						
E09-7		CAP	39	43	31	7	1	\	\						
E09-8	522-2704	STRAINER, FUEL	18	5	5	1	\	1	1						
E09-9		JACKET, RUBBER	85	12	12	4	1	1	1						
E09-10		CLAMP	15	11	8	1	1	1	1						
E09-11	589-6234	HIGH ALTITUDE KIT 1(3000-6000ft)													
	589-6215	HIGH ALTITUDE KIT 2(6000-8000ft)													

FIG.9 FLYWHEEL / IMPELLER / STARTER PULLEY / IGNITION COIL (E10)



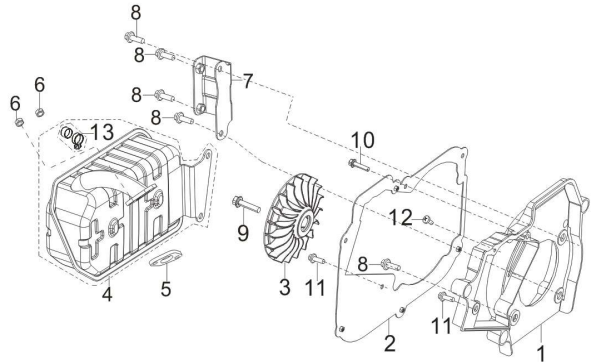
REF.NO.	CAT Part Number	DESCRIPTION	L mm	W mm	H mm	Weight (g)	Q'TY	Q'TY CARB	Q'TY CSA	CAT Group Part Number	CAT Part Name	L mm	W mm	H mm	Weight (g)
E10-1		NUT, FLYWHEEL	30	30	15	25	1	1	1	589-6182	FLYWHEEL GP	90	90	43	202
E10-2		IMPELLER	90	90	43	177	\	1	1						
E10-3		BOLT	10	10	66	13	3	3	3	589-6183	ALTERNATOR GP	337	186	140	5680
E10-4		CASE SUBASSEMBLY, MAGNETO ROTOR	186	186	85	3489	1	1	1						
E10-5		STATOR SUBASSEMBLY, MAGNETO	151	151	55	2137	\	\	1						
E10-6		WASHER, FLAT	13	13	2	0.5	3	3	3						
E10-7		CLAMP, MAGNETO WIRING	56	25	5	6	1	1	1						
E10-8		BOLT	13	13	15	3	2	2	2						

FIG.10 CLEANER, AIR (F01)



REF.NO.	CAT Part Number	DESCRIPTION	L mm	W mm	H mm	Weight (g)	Q'TY	Q'TY CARB	Q'TY CSA	CAT Group Part Number	CAT Part Name	L mm	W mm	H mm	Weight (g)
F01-1		CLEANER, AIR	210	130	115	284	\	1	1	589-6184	HOUSING GP-FILTER	210	130	115	296
F01-4		BOLT	31	14	14	7	\	2	2						
F01-2		TUBE, INTAKE	125	52	95	115	1	1	1	589-6185	CLEANER GP-AIR	125	52	95	303
F01-3		COLLAR, INTAKE PIPE	60	52	18	18	2	2	2						
F01-5		SECONDARY AIR FILTER	156	110	100	146	1	1	1						
F01-6		NUT	14	14	6	3	2	2	2						
F01-7	589-6226	GASKET, AIR CLEANER	58	37	1	2	1	1	1						
F01-8		PAPER ELEMENT, AIR CLEANER	163	91	20	59	1	1	1	589-6227	ELEMENT GP	163	91	25	60
F01-9		FOAM ELEMENT, AIR CLEANER	154	83	5	1	1	1	1						

FIG.11 MUFFLER ASSY. (F02)



REF.NO.	CAT Part Number	DESCRIPTION	L mm	W mm	H mm	Weight (g)	Q'TY	Q'TY CARB	Q'TY CSA	CAT Group Part Number	CAT Part Name	L mm	W mm	H mm	Weight (g)
F02-1		SHROUD	340	255	55	269	\	1	1	589-6186	INSULATION GP-MUFFLER	340	280	100	862
F02-2		SUPPORTER, MUFFLER COVER	340	280	5	403	1	1	1						
F02-3		IMPELLER	138	138	40	102	\	1	1						
F02-8		BOLT	25	16	16	11	5	5	5						
F02-9		BOLT	30	18	18	13	1	1	1						
F02-10		BOLT	14	14	40	10	1	1	1						
F02-11		BOLT	18	14	14	5	2	2	2						
F02-12		BOLT	15	5	5	3	1	1	1						
F02-4		MUFFLER ASSY.	285	150	200	2079	\	1	1	589-6187	MUFFLER GP	285	150	200	2281
F02-5	511-7292	GASKET, EXHAUST OUTLET	65	35	1	3	\	1	1						
F02-6		NUT	17	17	8	7	2	2	2						
F02-7		BRACKET,MUFFLER	120	56	40	164	1	1	1						
F02-13	589-6229	SPARK ARRESTOR	55	36	40	21	1	1	1						

FIG.12 TANK ASSY, FUEL (F03)

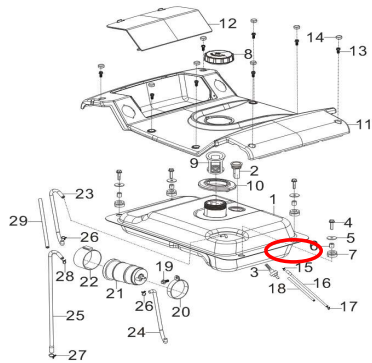
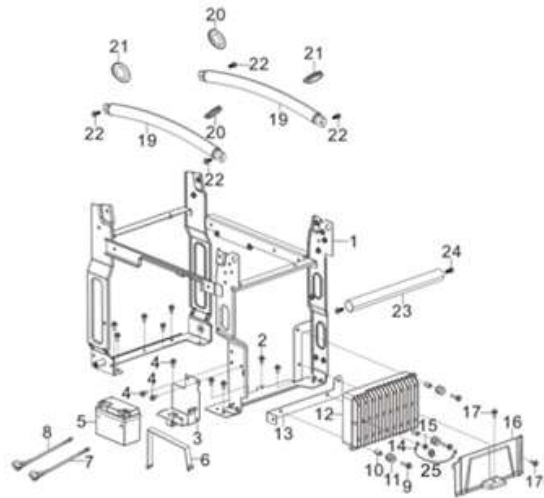


Diagram to left shows CARB version with charcoal canister for EVAP.

REF.NO.	CAT Part Number	DESCRIPTION	L mm	W mm	H mm	Weight (g)	Q'TY	Q'TY CARB	Q'TY CSA	CAT Group Part Number	CAT Part Name	L mm	W mm	H mm	Weight (g)
F03-1		TANK ASSY, FUEL	500	300	180	2412	\	1	1	589-6188	TANK GP-FUEL	500	300	180	2530
E03-2	589-6230	LEVELER ASSY, OIL	620	120	45	43	1	1	1						
E03-3	589-6231	OUTLET SUBASSEMBLY, FUEL TANK OIL	60	19	19	6	1	1	1						
E03-4		BOLT	31	14	14	7	4	4	4						
E03-5		WASHER, FLAT	25	25	2	7	4	4	4						
E03-6		BUSH	12	12	12	5	4	4	4						
E03-7		SLEEVE, FUEL TANK RUBBER	25	25	13	5	4	4	4						
E03-15		CLAMP	19	15	8	2	1	1	1						
E03-16		TUBE, FUEL	150	100	11	13	1	1	1						
E03-17		CLAMP	15	11	8	1	1	1	1						
F03-18		JACKET, RUBBER	130	11	11	4	\	1	1	1					
E03-8		COVER, FUEL TANK	78	78	27	52	1	1	1	589-6189	CAP GP-FUEL	78	78	60	63
F03-9	589-6232	STRAINER, FUEL	71	43	43	11	\	1	1	589-6190	COVER GP	625	425	100	2166
E03-10		SLEEVE, FILLING OIL HOLE RUBBER	95	95	15	40	1	1	1						
E03-11		COVER, UPPER	625	425	100	1396	1	1	1						
E03-12	589-6233	ACCESSORY BOX COVER	253	153	45	143	1	1	1						
E03-13		BOLT	11	11	21	5	8	8	8						
E03-14		PLUG, END	16	16	7	1	1	1	1						

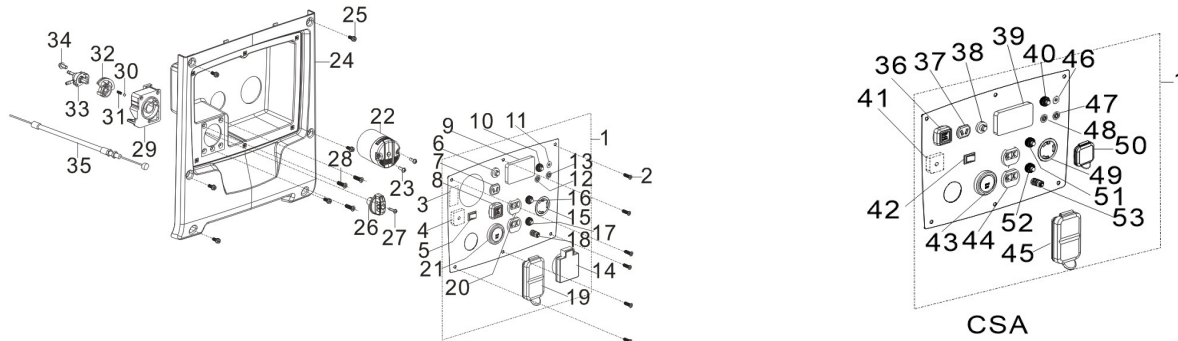
E03-19		BOLT	14	14	27	6	1	1	1	589-6191	DISPOSAL GP -A	315	80	80	288
F03-20		FASTEN PLATE, CARBON COLLECTOR	80	71	14	34	\	1	1						
F03-21		COLLECTOR, FUEL STEAM	145	72	72	153	\	1	1						
E03-22		JACKET, RUBBER	70	65	35	15	1	1	1						
E03-23		HOSE, FUEL EVAP, CONNECT TO TANK EVAP HOLE	245	75	9	16	1	1	1						
E03-24		HOSE, FUEL EVAP, CONNECT FOR FUEL DRAIN	305	205	9	21	1	1	1						
F03-25		HOSE, AIR CLEANER	315	60	11	31	\	1	1						
E03-26		CLAMP DIA=7.5	15	11	8	1	2	2	2						
03-27		CLAMP DIA=9.5	19	15	8	2	\	1	1						
E03-28		CLAMP DIA=10.7	20	8	20	1.6	1	1	1						
F03-29		JACKET, RUBBER	205	12	12	8	\	1	1						

FIG.13 FRAME (F04)



REF.NO.	CAT Part Number	DESCRIPTION	L mm	W mm	H mm	Weight (g)	Q'TY	Q'TY CARB	Q'TY CSA	CAT Group Part Number	CAT Part Name	L mm	W mm	H mm	Weight (g)
F04-5	511-7304	BATTERY	105	54	88	398	\	1	1						
F04-6	589-6235	BAND, BATTERY	221	33	20	27	1	1	1						
F04-7		WIRE, ANODE	725	12	15	55	1	1	1	589-6192	CABLE GP- BATTERY	725	24	15	95
F04-8		WIRE, CATHODE	571	12	15	40	1	1	1						
F04-12	589-6236	INVERTOR	242	152	95	2495	1	1	1						
F04-1		FRAME ASSY, ENGINE	550	395	440	3305	1	1	1	589-6193	FRAME GP-ENGINE	550	395	440	5392
F04-2		BOLT	18	14	14	5	9	9	9						
F04-3		CASE, BATTERY	127	120	60	121	1	1	1						
F04-4		BOLT	18	14	14	5	3	3	3						
F04-9		BOLT	31	14	14	7	3	3	3						
F04-10		BUSH	11	11	15	6	3	3	3						
F04-11		JACKET, RUBBER	19	19	11	2	3	3	3						
F04-13		ASSEMBLING FRAME, INVERTER	255	52	33	108	1	1	1						
F04-14		GROUNDING	740	10	8	34	1	1	1						
F04-15		BOLT	10	10	11	2	1	1	1						
F04-16		COVER, INVERTOR OUTER	270	110	100	88	1	1	1						
F04-17		BOLT	18	14	14	5	\	2	2						
F04-19		HANDLE	450	28	50	590	2	2	2						
F04-20		RUBBER WASHER	56	44	11	10	2	2	2						
F04-21		RUBBER WASHER	56	44	11	10	2	2	2						
F04-22		BOLT	36	14	14	9	4	4	4						
F04-23		CROSS BAR,FRAME	315	27	27	381	1	1	1						
F04-24		BOLT	18	14	14	5	\	2	2						
F04-25		WASHER, FLAT	11	11	1.5	5	\	1	1						

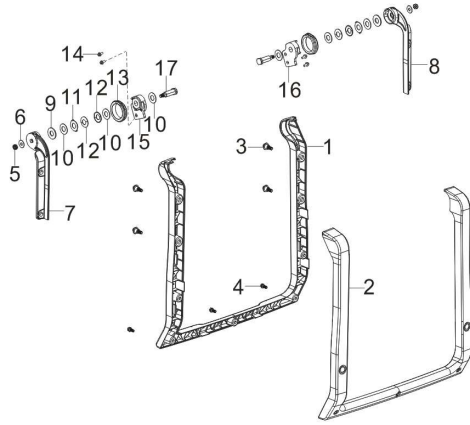
FIG.14 Control panel components, Panel seat (F05)



REF.NO.	CAT Part Number	DESCRIPTION	L mm	W mm	H mm	Weight (g)	Q'TY	Q'TY CARB	Q'TY CSA	CAT Group Part Number	CAT Part Name	L mm	W mm	H mm	Weight (g)
F05-1		PANEL SUBASSEMBLY, CONTROL	300	212	100	1364	\	1	\	589-6194	PANEL GP-CONTROL (BASIC)	300	212	100	2103
F05-2		BOLT	18	8	8	2	6	6	6						
F05-24		HOUSING, PANEL	363	100	390	697	1	1	1						
F05-25		BOLT	11	11	21	5	6	6	6	589-6240	PANEL GP-CONTROL (BASIC)	300	212	100	2103
F05-1		PANEL SUBASSEMBLY, CONTROL	300	212	110	1410	\	\	1						
F05-2		BOLT	18	8	8	2	6	6	6						
F05-24		HOUSING, PANEL	363	100	390	697	1	1	1						
F05-25		BOLT	11	11	21	5	6	6	6						
F05-3	589-6237	CO CONTROLLER	64	42	23	72	1	1	\						
F05-4		BRIDGE, RECTIFICATION	27	27	21	18	1	1	\						
F05-5		SWITCH SUBASSEMBLY	25	19	28	5	1	1	\						
F05-6	501-5361	PROTECTOR, OVERCURRENT	29	15	49	10	1	1	\						
F05-7	530-1197	SOCKET SUBASSEMBLY, D.C	31	26	20	6	1	1	\						
F05-8	530-1194	SOCKET SUBASSEMBLY, POWER SUPPLY	46	37	40	25	1	1	\						
F05-9	589-6241	MULTI DISPLAY	80	51	21	50	1	1	\						
F05-10	589-6242	BUTTON, RESETTING	45	29	13	14	1	1	\						
F05-11	501-5364	BATTERY CHARGER PORT	51	34	13	27	1	1	\						
F05-12		PARALLEL POST	43	17	24	6	1	1	\	589-6158	RECEPTACLE GP	30	30	15	25
F05-13		PARALLEL POST	43	17	24	6	1	1	\						
F05-14	501-5369	RAIN COVER, RECEPTACLE	64	49	13	14	1	1	\						
F05-15	501-5370	SOCKET SUBASSEMBLY, POWER SUPPLY	92	41	30	76	1	1	\						
F05-16	501-5362	PROTECTOR, OVERCURRENT	45	28	13	13	1	1	\						
F05-17	501-5360	PROTECTOR, OVERCURRENT	41.5	34	14	24	1	1	\						
F05-18	530-1193	TERMINAL SUBASSEMBLY, GROUNDING	24	10	11	10	1	1	\						
F05-19	511-8898	RAIN COVER, RECEPTACLE	93	47	19	19	1	1	\						
F05-20	511-8058	SOCKET SUBASSEMBLY, POWER SUPPLY	91	40	37	93	1	1	\						
F05-21	589-6251	SWITCH SUBASSEMBLY	42	42	20	16	1	1	\						

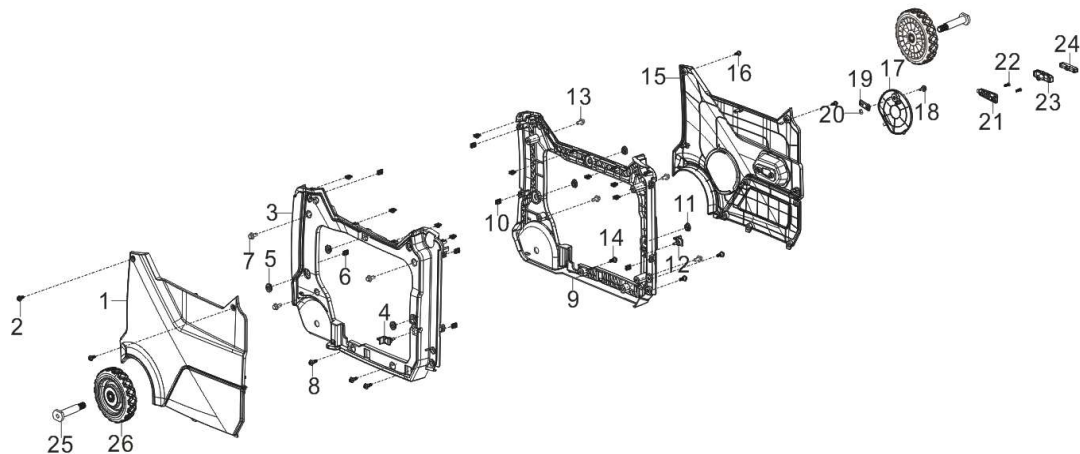
F05-22		CO ALARM	60	60	40	51	1	1	\	589-6195	DETECTOR-CO	60	60	40	54
F05-23		BOLT	24	7	7	3	\	2	2						
F05-26		KNOB	42	42	42	13	1	1	1	589-6196	SWITCH GP	120	66	53	135
F05-27		BOLT	8	8	18	2	1	1	1						
F05-28		BOLT	8	8	18	2	3	3	3						
F05-29		SWITCH SUBASSEMBLY	69	66	40	53	1	1	1						
F05-30		BALL, STEEL	7	7	7	2	1	1	1						
F05-31		SPRING, STOPPER ADJUSTING	4	4	13	0.1	1	1	1						
F05-32		LIMIT PLATE,CHOKE CABLE STROKE	47	36	13	9	1	1	1						
F05-33		FUEL VALVE	57	52	25	45	1	1	1						
F05-34		BOLT	18	14	14	5	1	1	1						
F05-35		HANDLE SUBASSEMBLY, CHOKE	480	11	10	28	\	1	1						
F05-36	530-1194	SOCKET SUBASSEMBLY, POWER SUPPLY	45	39	27	25	\	\	1						
F05-37	530-1197	SOCKET SUBASSEMBLY, D.C	31	26	20	6	\	\	1						
F05-38	501-5361	PROTECTOR, OVERCURRENT	29	15	49	10	\	\	1						
F05-39	589-6241	MULTI DISPLAY	80	51	21	50	\	\	1						
F05-40	589-6242	BUTTON, RESETTING	45	29	13	14	\	\	1						
F05-41		BRIDGE, RECTIFICATION	27	27	21	18	\	\	1						
F05-42		SWITCH SUBASSEMBLY	25	19	28	5	\	\	1						
F05-43	589-6251	SWITCH SUBASSEMBLY	25	19	28	5	\	\	1						
F05-44	511-8058	SOCKET SUBASSEMBLY, POWER SUPPLY	91	40	37	93	\	\	1						
F05-45	511-8898	RAIN COVER RECEPTACLE	93	47	19	19	\	\	1						
F05-46	501-5364	SOCKET SUBASSEMBLY, D.C	51	34	13	27	\	\	1						
F05-47		PARALLEL POST	43	17	24	6	\	\	1	589-6158	RECEPTACLE GP	30	30	15	25
F05-48		PARALLEL POST	43	17	24	6	\	\	1						
F05-49	501-5370	SOCKET SUBASSEMBLY, POWER SUPPLY	92	41	30	76	\	\	1						
F05-50	501-5369	RAIN COVER RECEPTACLE	64	49	13	14	\	\	1						
F05-51	501-5362	PROTECTOR, OVERCURRENT	45	28	13	13	\	\	1						
F05-52	501-5360	PROTECTOR, OVERCURRENT	45	28	13	13	\	\	1						
F05-53	530-1193	TERMINAL SUBASSEMBLY, GROUNDING	24	10	11	10	\	\	1						

FIG.15 HANDEL (F08)



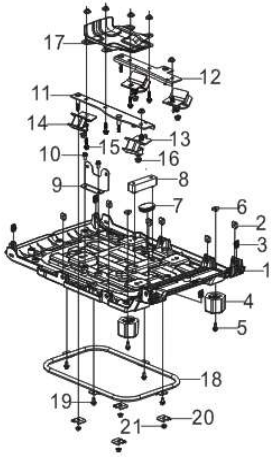
REF.NO.	CAT Part Number	DESCRIPTION	L mm	W mm	H mm	Weight (g)	Q'TY	Q'TY CARB	Q'TY CSA	CAT Group Part Number	CAT Part Name	L mm	W mm	H mm	Weight (g)
F08-1		LOWER TUBE, FOLDABLE HANDLE	445	470	65	460	1	1	1	589-6197	HANDLE AS	445	490	140	950
F08-2		UPPER TUBE, FOLDABLE HANDLE	445	490	75	427	1	1	1						
F08-3		BOLT	17	17	28	12	4	4	4						
F08-4		BOLT	10	10	19	5	3	3	3						
F08-5		NUT	6	5	6	2	2	2	2	589-6198	HINGE AS	196	144	50	420
F08-6		WASHER, FLAT	18	18	1.5	2	2	2	2						
F08-7		LEFT HANDLE CONNECTOR	196	72	35	112	1	1	1						
F08-8		RIGHT HANDLE CONNECTOR	196	72	35	112	1	1	1						
F08-9		WASHER, FLAT	27	26	2	1	2	2	2						
F08-10		WASHER, FLAT	25	25	1	3	\	4	4						
F08-11		BLOCK, POSITION FIXING	27	26	2	1	2	2	2						
F08-12		WASHER	25	25	1	3	4	4	4						
F08-13		SLEEVE, HANDLE RUBBER	48	48	6	5	2	2	2						
F08-14		BOLT	14	14	20	6	4	4	4						
F08-15		SEAT, HANDLE TUBE CONNECTING	54	50	23	44	\	1	1						
F08-16		SEAT, HANDLE TUBE CONNECTING	54	50	23	44	\	1	1						
F08-17		FASTEN AXLE	45	18	13	36	2	2	2						

FIG.16 SHELL, DECROITIVE PLATES (F31)



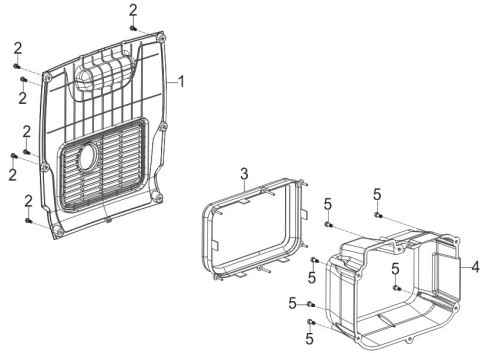
REF.NO.	CAT Part Number	DESCRIPTION	L mm	W mm	H mm	Weight (g)	Q'TY	Q'TY CARB	Q'TY CSA	CAT Group Part Number	CAT Part Name	L mm	W mm	H mm	Weight (g)						
F31-1		COVER BOARD, LEFT	550	400	35	860	1	1	1	589-6199	DOOR GP-LH	550	400	35	864						
F31-2		BOLT	17	10	10	4	2	2	2												
F31-3		SHELL, LEFT	640	470	55	809	1	1	1	589-6204	COVER GP-LH	640	470	110	1851						
F31-4		HANDLE TUBE CONNECTING SEAT	45	21	48	8	1	1	1												
F31-5		SLEEVE, FUEL TANK RUBBER	25	16	10	2	3	3	3												
F31-6		NUT	19	10	12	5	8	8	8												
F31-7		BOLT	18	14	14	5	3	3	3												
F31-8		BOLT	17	17	28	12	3	3	3												
F31-9		SHELL, RIGHT	630	470	55	823	1	1	1												
F31-10		NUT	19	10	12	5	8	8	8												
F31-11		SLEEVE, FUEL TANK RUBBER	25	16	10	2	3	3	3												
F31-12		HANDLE TUBE CONNECTING SEAT	45	21	48	8	1	1	1												
F31-13		BOLT	18	14	14	5	4	4	4												
F31-14		BOLT	17	17	28	12	3	3	3												
F31-15		COVER BOARD, RIGHT	550	400	35	898	1	1	1							589-6205	COVER GP-RH	550	400	35	944
F31-16		BOLT	17	10	10	4	2	2	2												
F31-21		GUIDE , STARTING ROPE	83	27	7	10	1	1	1												
F31-22		BOLT	18	8	8	2	1	1	1												
F31-23		SLEEVE, CABLE HANDLE OUTER	75	20	33	16	1	1	1												
F31-24		CORE, CABLE HANDLE	68	14	19	9	1	1	1	589-6206	DOOR GP-RH	139	139	30	69						
F31-17		RIGHT MAINTENANCE DOOR	139	139	30	54	1	1	1												
F31-18		BOLT	20	16	16	10	1	1	1												
F31-19		MAINTENANCE DOOR BLOCKER	31	19	7	2	\	1	1												
F31-20		NUT	9	8	5	3	1	1	1	589-6207	WHEEL GP	152	152	35	393						
F31-25		AXLE, WHEEL	64	58	14	49	2	2	2												
F31-26		WHEEL	152	152	35	344	2	2	2												

FIG.17 BOTTOM PLATE (F32)



REF.NO.	CAT Part Number	DESCRIPTION	L mm	W mm	H mm	Weight (g)	Q'TY	Q'TY CARB	Q'TY CSA	CAT Group Part Number	CAT Part Name	L mm	W mm	H mm	Weight (g)						
F32-1		PLATE, BOTTOM	605	403	85	1496	1	1	1	589-6208	FRAME GP-ENGINE	605	403	200	3801						
F32-2		NUT	16	16	5	8	6	6	6												
F32-3		NUT	19	10	12	5	4	4	4												
F32-7		PLUG, END	49	30	10	9	1	1	1												
F32-8		CUSHION	90	21	22	59	1	1	1												
F32-9		SUPPORT, ATR CLEANER	96	26	68	103	1	1	1												
F32-10		BOLT	18	14	14	5	2	2	2												
F32-11		LEFT SUPPORTER	308	47	47	368	1	1	1												
F32-12		RIGHT SUPPORTER	243	65	50	287	1	1	1												
F32-13		CUSHION, ENGINE FRAME LEFT	70	47	60	131	2	2	2												
F32-14		CUSHION, ENGINE FRAME RIGHT	70	47	60	131	2	2	2												
F32-15		BOLT	48	16	16	19	4	4	4												
F32-16		NUT	17	17	8	7	10	10	10												
F32-17		DEFLECTOR, CRANKCASE AIR	195	84	31	182	1	1	1												
F32-18		STRENGTHEN PLATE	412	285	14	461	1	1	1												
F32-19		BOLT	18	14	14	5	\	4	4												
F32-20		PLATE, REINFORCEMENT	35	25	10	14	\	4	4												
F32-21		NUT	9	9	6	3	4	4	4												
F32-4		SEAT, ENGINE FRAME SHOCK ABSORPTION	56	50	42	104	2	2	2							589-6209	SUPPORT GP-FRAME	56	50	42	120
F32-5		BOLT	14	14	20	6	2	2	2												
F32-6		NUT	16	16	5	8	2	2	2												

FIG.18 MUFFLER SIDE COVER (F33)



REF.NO.	CAT Part Number	DESCRIPTION	L mm	W mm	H mm	Weight (g)	Q'TY	Q'TY CARB	Q'TY CSA	CAT Group Part Number	CAT Part Name	L mm	W mm	H mm	Weight (g)
F33-1		COVER, MUFFLER SIDE	415	400	50	814	1	1	1	589-6210	COVER GP-SIDE	415	400	260	1458
F33-2		BOLT	12	12	19	5	6	6	6						
F33-3		HEAT INSULATOR	275	180	70	107	1	1	1						
F33-4		COVER, MUFFLER	330	265	130	477	1	1	1						
F33-5		BOLT	10	10	19	5	6	6	6						

FIG.19 DECAL



REF.NO.	CAT Part Number	DESCRIPTION	L mm	W mm	H mm	Weight (g)	Q'TY	Q'TY CARB	Q'TY CSA	CAT Group Part Number	CAT Part Name	L mm	W mm	H mm	Weight (g)
1		Model decal	229	55				2	2	589-6228	FILM GP (BRAND)	229	105	5	30
2		Brand decal	172	105				2	2						
13		Brand decal	95	58				1	1						
3		Brand decal	31	20				2	2	589-6246	FILM GP (SAFETY)	201	83	8	25
4		CP65 decal	85	83				1	1						
7		Hot warning decal	70	20				1	1						
9		CO decal	201	70				1	1						
10		Warning decal	152	46				1	1						
15		Warning decal	131	43				1	1						
17		Warning decal	164	76				1	1	589-6247	FILM GP (INFORMATION)	257	43	4	20
5		Data decal	85	43				1	\						
6		QR contact decal	70	20				1	1						
14		QSG	257	43				1	1						
16	501-5417	General warning tag	202	125				1	1						
8		Regulation decal	41	8				\	1						
18		General warning tag	81	85				1	1						
20		Warning decal on the battery	95	26				1	1						
21		Brand decal	92	57				1	1						
22		Warning decal on the battery	92	57				1	1						
23		Brand decal	32	15				1	1						

FIG.21



24



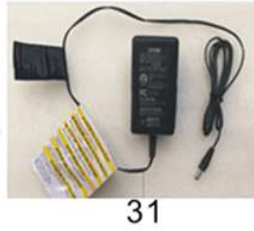
25



26

REF.NO.	CAT Part Number	DESCRIPTION	L mm	W mm	H mm	Weight (g)	Q'TY	Q'TY CARB	Q'TY CSA	CAT Group Part Number	CAT Part Name	L mm	W mm	H mm	Weight (g)
24	589-6159	BOX, PACKING	720	510	525	2328	1	1	\						
25	589-6211	BOX, PACKING	720	510	525	2328	1	\	1						
26			285	209			1	1	1						

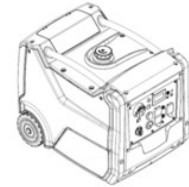
FIG.22 SERVICE KIT



CAT

Owner's Manual
INV4000 E
Portable Generator

27—



REF.NO.	CAT Part Number	DESCRIPTION	L mm	W mm	H mm	Weight (g)	Q'TY	Q'TY CARB	Q'TY CSA	CAT Group Part Number	CAT Part Name	L mm	W mm	H mm	Weight (g)
27	530-1275	OWNER'S MANUAL	285	210	7	110	1	1	\						
28		SCREW-DRIVER	200	35	35	100	1	1	1	589-6223	TOOL GP	250	105	60	350
32		SPANNER, DOUBLE ENDED	122	23	4	40	1	1	1						
33		SPANNER, DOUBLE ENDED	140	34	5	140	1	1	1						
35		ROD, FORCING	150	8	8	56	1	1	1						
29		SLEEVE	121	26	26	75	1	1	1						
		FOAM INSERT TOOL BOX COMPARTMENT													
30	501-5147	FUNNEL, FILLING OIL	395	100	83	33	1	1	1						
31	501-5412	CHARGER, BATTERY	125	63	55	162	1	1	1						
34		OIL	195	105	53	527	1	1	1						
36	589-6253	CABLE, 12V CHARGING													