



COMMITTED TO YOUR SUCCESS...

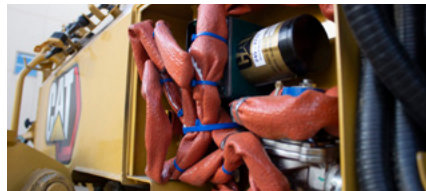
CAT® LAND MANAGEMENT AND FIRE SUPPRESSION



Dozers

The dozer is one of the most important machines available today to prevent and fight forest fires. It creates fire lines in heavy fuel and brush areas, clears safety areas and builds access roads for equipment and crews along a fire line. Caterpillar offers a range of dozers for these applications all the way down to the D1 size class (80 hp/18,000 lb). In addition, Caterpillar offers a dedicated mulcher attachment for the D1 size class. In the larger range of Cat® dozers, the D5 Fire Suppression Dozer (FSD) brings significant improvements and innovations to fire operators:

- + All lines, harnesses and Diesel Exhaust Fluid (DEF) tank are fire wrapped.
- + Guarded all around with full width sweeps, screens on all windows, HD bottom guards, light guards
- + Choice of tempered or laminated sealed glasses
- + Choice of undercarriage: standard, LGP or XtraRear for unmatched stability in slopes and loose ground conditions
- + Standard or Emergency engine for United States fire agencies
- + 6 lights, 54 000 lumens at work for great job site visibility
- + Cab air filtration enhanced with an ember screen, powered turbine with dust ejector and high efficiency Particulate Air filter, enable installation of a HEPA + Carbon filter
- + In-cab fuel shut off switch and quick access floor plate
- + Standard and LGP blades equipped with HD brush guard
- + Integrated fire suppression system with a 83 L (22 gal) stainless steel tank



Motor Graders

Motor graders bring the latest emissions reduction technology to the most durable, productive and comfortable motor graders on the market. From building roads to maintaining them, motor graders are designed to help you get more work done in less time. Outstanding durability, unprecedented operator comfort and ease of service help to maximize your return on investment.

Loggers and truckers need control and Cat motor graders set the standard in road building and maintenance giving the confidence to get the job done. Whether it is smoothing and profiling existing roads, drainage and landings, creating new access roads and water control or snow removal, Cat has the right machine for the job. A host of integrated technology solutions increase operator efficiency, boost productivity and lower operating costs. The newest line up on Cat motor graders take advantage of larger engines, increased fuel efficiency, improved balance and enhanced transmission performance.



Excavators

The 320 raises the bar for efficiency and fuel economy in this size class. With the industry's highest level of standard factory technology, a new cab focused on operator comfort, plus lower fuel and maintenance, the 320 with a mulcher attached can set the new pace for productivity and profit in your forestry or land management operation.

NEXT GENERATION EXCAVATORS

Cat Next Generation Excavators offer you more choices than ever for your business.

- + Mulchers available for tracked and wheeled HEX up to 36 metric tons
- + Standard carbide tooth drums or bite limiting drums available
- + Hydraulic Door comes standard on all mulchers
- + Two speed hydraulic motor optimizes mulcher performance for different material types and helps prevent stalling

Ready to help you make your business stronger, Cat Next Generation Excavators give you new ways to get the most work done at the lowest cost – so you put more money in your pocket.



Forestry Excavators

Performance and availability describe the Cat 558 Forest Machine. Purpose built, it features extreme-duty component frames that can handle the machine's powerful engine and hydraulic systems ensuring productivity, durability and lower operating costs.

Options are available to fit the 538 to your specific forestry tasks. Increase efficiency with up to 35% higher swing torque allowing the operator to shovel log or load/unload trucks more efficiently, increasing production. The 558 Forest Machine has up to 12% less fuel consumption. The power and hydraulics are optimized for peak productivity and delivering maximum fuel efficiency.

THE NEWEST FOREST MACHINES WILL BRING YOU

- + **Heavy lift mode** features increase lift capacity to handle larger payloads with improved control
- + **989 L (261 gal) Counterweight fuel tank** for extended machine operation and maximum uptime
- + **Engine, hydraulics, and work tool integration** are optimized to minimize power losses and increase overall machine efficiency



Compact Track Loaders

Caterpillar offers Land Management segment solution packages designed for customers involved in demanding vegetation-management applications ranging from mulching, brush-cutting, vegetation control, and mowing. The 299D3 XE *Land Management* Compact Track Loader is fitted with additional equipment specifically designed to tackle these challenging applications:

- + **Purpose built solution** for land management applications
- + **The power you need** – high pressure and high flow auxiliary hydraulic system for superior productivity
- + **58 gallon (220 L) fuel capacity** for up to 12 hours of run time
- + **Enhanced machine sealing**
- + **Additional protective guarding**
- + **Reversing fan**
- + **Large removable panels** for easy cleanout
- + **Extra hydraulic cooling** for high ambient working conditions
- + **One piece sealed and pressurized cab** clean, quiet, and comfortable
- + **Extended engine air filter life** via a turbine pre-cleaner
- + **In-cab fire extinguisher mount**
- + **Robust screw-to-connect auxiliary hydraulic fittings**
- + **Fire suppression system** option



299D3 XE *Land Management* Specifications:

Gross Power – 82 kW (110 hp)

Auxiliary Hydraulic Pressure (maximum) – 28 000 kPa (4,061 psi)

Auxiliary Hydraulic Flow (maximum) – 150 L/min (40 gal/min)

CAT MULCHERS

Performance matched for the 299D3 XE *Land Management*, Mulchers reduce saplings, shrubs and trees into mulched material, making these attachments ideal for environmental maintenance, such as creating fire lanes.



HM418C

Cat® Attachments for Land Management

Caterpillar offers a wide range of attachments to help you do more with one machine. Designed and built for optimum performance and durability, Cat Work Tools deliver high productivity in a variety of applications to maximize versatility:

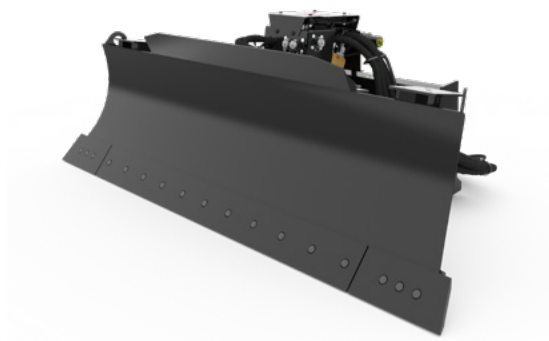
CLEARING

- + BRUSHCUTTER
- + FLAIL MOWER
- + INDUSTRIAL GRAPPLE BUCKET
- + INDUSTRIAL GRAPPLE RAKE
- + MULCHER
- + POWER BOX RAKE
- + RIPPER
- + STUMP GRINDER
- + THUMB



EARTHMOVING

- + ANGLE BLADE, DOZER BLADE, AND SMART DOZER BLADE
- + DITCH CLEANING AND GRADING BUCKET
- + GENERAL PURPOSE BUCKET
- + INDUSTRIAL BUCKET
- + INDUSTRIAL GRAPPLE BUCKET
- + MULTI-PURPOSE BUCKET
- + SIDE DISCHARGE BUCKET
- + TRENCHER



FINISHING

- + BROOM
- + FORKS
- + POWER BOX RAKE
- + SMART DOZER BLADE
- + VIBRATORY DRUM COMPACTOR



Progress Rail

A Caterpillar Company

FOR MORE INFORMATION CONTACT:
Sales: 334-387-9303
Parts: 888-660-5252
Service: 833-537-7782

Progress Rail offers dependable Kershaw® equipment to tackle your vegetation management needs. Let our tough and reliable machines make tree, brush and right-of-way clearing, landscaping, golf course management and residential upkeep easier to maintain for you and your crew.



KERSHAW® SKYTRIM MINI 55 TH

The Kershaw® SkyTrim Mini 55 TH is a compact, mobile, self-powered tree trimmer based on a telehandler platform. It is ideally suited for utility right-of-way and residential applications, golf courses, rental properties and municipalities.

Weight: 5669.9 kg (12,500 lb) with standard 14-inch by 17.5-inch tires.

Engine: Deutz TD 2.9L L4, 55 kW (74 hp) @ 2,200 rpm.

Meets U.S. EPA Tier 4 Final emission standards.

Propel System: Hydrostatic transmission with variable speed forward and reverse. Maximum travel speed is 24 kph (15 mph).



KERSHAW® SKYTRIM 75 G3

The Kershaw® SkyTrim 75 G3 is a rubber-tired, telescoping tree trimmer designed for trimming tree limbs and clearing vegetation from utility right-of-ways, construction sites, roadways, and more in rough terrain. This machine is also CE certified for Europe.

Weight: Approximately 12 882 kg (28,400 lb) with standard 28L26 tires.

Engine: Equipped with liquid-cooled 4.4 liter Cat diesel engine rated for 97.9 kW (131 hp) @ 2,200 rpm and meets EU Stage V and U.S. EPA Tier 4 Final emission standards. Easy access to engine compartment for maximum serviceability.

Propel System: Hydrostatic propel motor driving through a heavy duty two-speed power shift transmission, with a foot switch to activate the differential lock.



KERSHAW® KLEARWAY 500 BRUSH CUTTER

The Klearway 500 is a rough terrain, rubber-tired vehicle with a front mounted rotary or shredder-type cutterhead designed to clear vegetation from utility right-of-ways, railroad right-of-ways and for site preparation.

Weight: Approximately 14 515 kg (32,000 lb) with standard 28L26 tires.

Engine: Equipped with a Tier 4 Final Cat C7.1 liquid cooled diesel engine rated for 186 kW (250 hp) @ 2,200 rpm.

Propel System: Hydrostatic 4-wheel drive with propel motor driving through a heavy duty 2-speed powershift transmission.

Kershaw® Vegetation Management

Cat Mobile Generators and Rental Power

Caterpillar manufactured gas and diesel generators, ranging from 20 kW all the way to 2,000 kW, are industry leaders in mobile applications. These generators are available for sale or rent from our worldwide Cat dealer network in over 1,600 locations, offering you complete power solutions no matter if the need is temporary or permanent.



- + **The industry's largest – and most modern – mobile generator fleet.**
We offer a full-line of single-sourced solutions for all mobile and rental power needs. All Cat dealers are backed by factory professionals around the world, providing an extra level of support only available from Caterpillar.
- + **Reliable equipment, built exclusively for mobile applications.**
Cat power modules are well engineered and packaged both as trailorized and skid-mounted units.
- + **Experienced engineers and service technicians,** supported by the best parts availability in the world. The Cat parts network provides local sourcing for most parts and routinely ships emergency orders within four hours of receiving the order. No other power generation operation can boast of the worldwide dealer network and parts distribution system that Cat customers have come to rely on.
- + **Partnerships with key suppliers of ancillary equipment** such as transformers, distribution equipment, temperature control, compressed air, etc. ensure matched, high-quality total solutions. Turnkey service – around the clock, seven days a week. Cat Rental fleet and dealer resource centers provide expert consultation, additional rental inventories and other resources to dealers and their customers worldwide. Our network handles projects of almost unlimited size, from one 20 kVA generator set to 300+ MW distributed power generation.

WHEN UPTIME MATTERS, COUNT ON CATERPILLAR FOR THE BEST IN DEALER SUPPORT



If you are working in a land management operation or maintaining the forests to prevent forest fires, you need equipment you can rely on at all times. Whether you work on your own machines or want it done for you, your Cat dealer keeps you up and running.

- + RAPID PARTS AVAILABILITY
- + ONLINE PARTS ORDERING
- + PREVENTIVE MAINTENANCE SERVICES
- + FIELD SERVICE TRUCKS



YOUR CUSTOMER VALUE AGREEMENT

Cat Customer Value Agreements (CVAs) are easy ownership plans fit to your business needs in order to extend equipment life and maximize your investment. Whatever your industry, whatever your Cat product – keeping it in excellent condition means more production and lower costs. That's a CVA.



CAT FINANCING AND INSURANCE

Equipment protection plans offer extended warranty options to protect you against component failure. Our industry finance representatives understand Cat products and will help you get the most out of your investment.

For more complete information on Cat products, dealer services, and industry solutions, visit us on the web at www.cat.com

© 2021 Caterpillar
All rights reserved

Materials and specifications are subject to change without notice. Featured machines in photos may include additional equipment. See your Cat dealer for available options.

CAT, CATERPILLAR, LET'S DO THE WORK, their respective logos, "Caterpillar Corporate Yellow," the "Power Edge" and Cat "Modern Hex" trade dress as well as corporate and product identity used herein, are trademarks of Caterpillar and may not be used without permission.

AEXQ3137 (04-2021)
(N Am)

