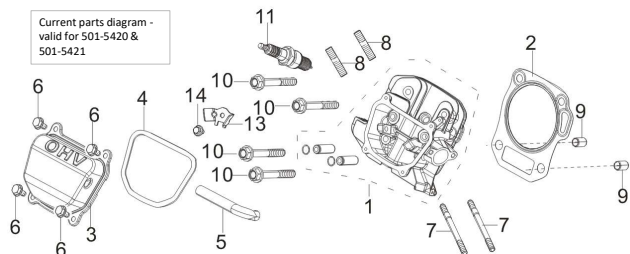


EPA Version RP5500

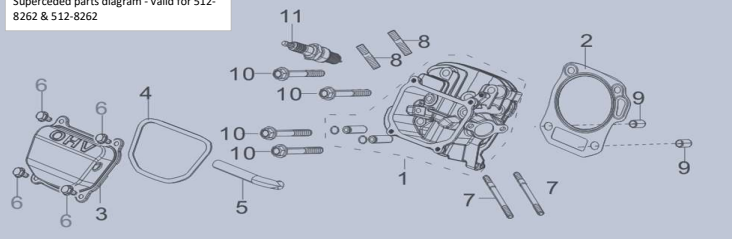
Important Information

The service parts list information provided within the Parts Diagram document is all inclusive of the service parts which are presently available for the defined model. Not all individual parts are serviceable at the piece part level. If an itemized part does not have a defined corresponding service part listed, the defined group level service part must be ordered.

Current parts diagram - valid for 501-5420 & 501-5421

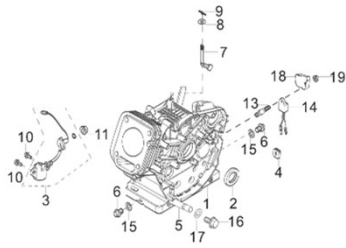


Superseded parts diagram - valid for 512-8262 & 512-8262



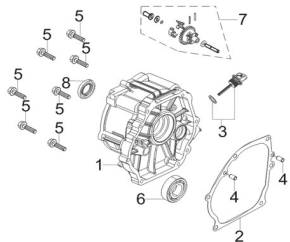
CYLINDER ASSY.

REF.NO.	Description	CAT Part Number	Group QTY	L mm	W mm	H mm	Weight g	Model	CAT Group Part Number	Group Name	L mm	W mm	H mm	Weight kg
3	COVER SUBASSEMBLY, CYLINDER HEAD		1	124	113	42	247	RP5500	501-5420	COVER GP-CYL HD	124	113	60	0.338
4	GASKET, CYLINDER HEAD COVER	501-5419	1	123	98	1.5	3	RP5500						
6	BOLT		4	15	15	15	4.5	RP5500	501-5421	HEAD GP-CYL BSC	190	160	120	1.82
5	TUBE, BREATHER	511-8041	1	134	15	15	18.5	RP5500						
1	HEAD SUBASSEMBLY, CYLINDER		1	165	160	94	1490	RP5500	501-5421	HEAD GP-CYL BSC	190	160	120	1.82
2	GASKET, CYLINDER HEAD	511-7253	1	117	136	1.2	21	RP5500						
7	STUD		2	101	8	8	27	RP5500	501-5421	HEAD GP-CYL BSC	190	160	120	1.82
8	STUD		2	34	8	8	20	RP5500						
9	PIN		2	20	13	13	4.5	RP5500	501-5421	HEAD GP-CYL BSC	190	160	120	1.82
10	BOLT, CYLINDER HEAD		4	190	20	20	51.5	RP5500						
11	PLUG, SPARK	511-7296	1	23	23	82	60	RP5500	530-1266	RETAINER GP	40	40	40	0.200
13	RETAINER		1					RP5500						
14	BOLT		1					RP5500	530-1266	RETAINER GP	40	40	40	0.200
			1					RP5500						



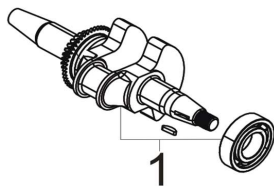
CRANKCASE ASSY.

REF.NO.	Description	CAT Part Number	Group QTY	L mm	W mm	H mm	Weight g	Model	CAT Group Part Number	Group Name	L mm	W mm	H mm	Weight kg
3	SENSOR, ENGINE OIL		1	110	50	50	45	RP5500	512-8285	SENSOR GP-LEVEL	110	50	70	0.0638
10	BOLT		2	15	15	15	5.5	RP5500						
11	NUT		1	127	90	58	41.6	RP5500						
7	ARM, GOVERNOR		1	94	40	8	38	RP5500	512-8264	LEVER GP-CAL	94	40	15	0.0402
8	WASHER, FLAT		1	12	12	1	1.6	RP5500						
9	COTTER		1	20	8	2	0.6	RP5500						
2	SEAL, OIL	511-7311	1	54	57	57	47	RP5500						
1	CRANKCASE SUBASSEMBLY.		1	370	185	280	5320	RP5500	512-8265	CRANKCASE GP	370	280	220	5.4114
4	PLUG, RUBBER		1	25	20	8	3.2	RP5500						
5	DRAIN PIPE		1	50	14	14	30	RP5500						
6	BOLT, DRAIN PLUG		2	23	18	7	3	RP5500						
15	WASHER, FLAT		2	21	21	2	1	RP5500						
16	BOLT, DRAIN PLUG	501-5404	1	23	18	7	3	RP5500						
17	WASHER, FLAT		1	16	16	1.5	0.4	RP5500						
13	BOLT		1	37	11	11	11	RP5500	512-8266	COVER GP	77	55	80	0.06
14	PROTECTOR, OIL		1	50	30	20	22	RP5500						
18	WIRE PROTECT COVER		1	77	55	42	24	RP5500						
19	NUT		1	13.5	13.5	6	3	RP5500						



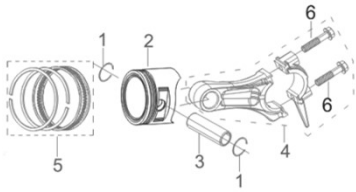
CRANKCASE COVER

REF.NO.	Description	CAT Part Number	Group QTY	L mm	W mm	H mm	Weight g	Model	CAT Group Part Number	Group Name	L mm	W mm	H mm	Weight kg
1	COVER, CRANKCASE		1	275	240	105	1440	RP5500						
2	GASKET, CRANKCASE	511-7245	1	260	213	0.5	4.6	RP5500	512-8267	COVER GP-REAR	275	240	130	1.5778
4	PIN		2	11	7	7	1.5	RP5500						
5	BOLT		7	43	17	17	18	RP5500						
6	BEARING, DEEP GROOVE BALL	511-8066	1	62	62	16	196.4	RP5500	512-8268	BEARING GP -B	62	62	70	0.2434
8	SEAL, OIL	530-1265	1	54	57	57	47	RP5500						
3	DIPSTICK SUBASSEMBLY, OIL	501-5087	1	86	37	31	20	RP5500						
7	GEAR ASSY, GOVERNOR	511-8037	1	65	60	60	62.8	RP5500						



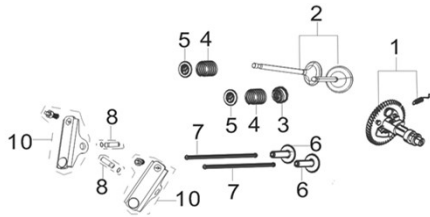
CRANKSHAFT ASSY.

REF.NO.	Description	CAT Part Number	Group QTY	L mm	W mm	H mm	Weight g	Model	CAT Group Part Number	Group Name	L mm	W mm	H mm	Weight kg
1	CRANKSHAFT ASSY.	511-8026	1	278	105	102	2940	RP5500						



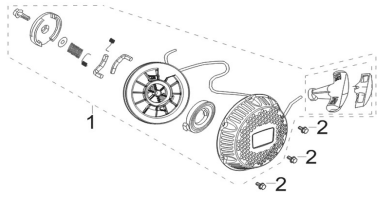
PISTON/CONNECTING ROD

REF.NO.	Description	CAT Part Number	Group QTY	L mm	W mm	H mm	Weight g	Model	CAT Group Part Number	Group Name	L mm	W mm	H mm	Weight kg
1	CLIP, PISTON PIN		2	17	17	1	0.4	RP5500	512-8269	PISTON GP	79	79	60	0.2292
2	PISTON		1	79	79	44	192	RP5500						
3	PIN, PISTON		1	53	15	15	36.4	RP5500						
4	ROD, CONNECTING		1	148	28	118	197	RP5500	512-8270	ROD GP-CONN	148	118	50	0.23
6	BOLT, CONNECTING ROD		2	44	15	15	16.5	RP5500						
5	PISTON RINGS SET	511-7265	1	84	84	4.6	16.2	RP5500						



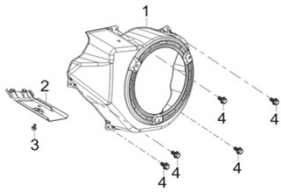
CAMSHAFT ASSY.

REF.NO.	Description	CAT Part Number	Group QTY	L mm	W mm	H mm	Weight g	Model	CAT Group Part Number	Group Name	L mm	W mm	H mm	Weight kg
1	CAMSHAFT ASSY.		1	102	102	122	772	RP5500	501-5444	CAMSHAFT GP	170	120	180	1.13
2	VALVES SET		1	61	32	90	68	RP5500						
3	GUIDE, SEAL		1	11	11	8	0.8	RP5500						
4	SPRING, VALVE		2	22	22	38	14.2	RP5500						
5	SEAT, VALVE SPRING		2	21	21	6	5.6	RP5500						
6	TAPPET, VALVE		2	26	26	48	32	RP5500						
7	LIFTER SUBASSEMBLY, VALVE		2	162	6	6	25	RP5500						
8	ROCKER SHAFT		2	32	9.4	9.4	12.8	RP5500						
10	ROCKER ARM, VALVE		2	66	22	32	55	RP5500						



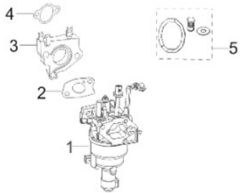
RECOIL ASSY.

REF.NO.	Description	CAT Part Number	Group QTY	L mm	W mm	H mm	Weight g	Model	CAT Group Part Number	Group Name	L mm	W mm	H mm	Weight kg
1	STARTER ASSY, RECOIL		1	258	258	48	709.8	RP5500	501-5431	PULLEY GP-CSHAFT	195	195	60	0.7536
2	BOLT		3	15	15	11	14.6	RP5500						



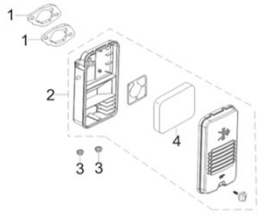
SHROUD ASSY.

REF.NO.	Description	CAT Part Number	Group QTY	L mm	W mm	H mm	Weight g	Model	CAT Group Part Number	Group Name	L mm	W mm	H mm	Weight kg
1	SHROUD		1	337	260	180	138	RP5500	512-8271	SHROUD GP-AIR	337	260	230	0.381
2	SHROUD, CYLINDER BODY		1	135	75	44	111	RP5500						
3	BOLT		1	15	15	15	4.5	RP5500						
4	BOLT		5	15	15	15	4.5	RP5500						



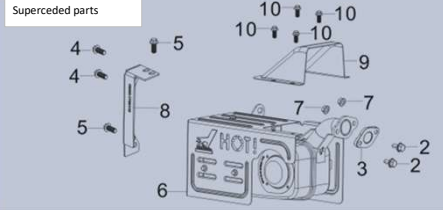
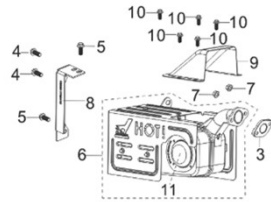
CARBURETOR ASSY.

REF.NO.	Description	CAT Part Number	Group QTY	L mm	W mm	H mm	Weight g	Model	CAT Group Part Number	Group Name	L mm	W mm	H mm	Weight kg
1	CARBURETOR ASSY.	511-7279	1	143	82	73	360	RP5500	512-8272	CARBURETOR GP-B	143	82	100	0.3892
2	GASKET, CARBURETOR	511-7270	1	66.5	45	0.5	1.2	RP5500						
3	PLATE, CARBURETOR INSULATOR	511-7273	1	74.5	70	25	27	RP5500						
4	GASKET, INLET	511-8039	1	71	40	0.5	1	RP5500						
5	HIGH ALTITUDE KIT (3000-6000ft)	501-5083	1					RP5500						
	HIGH ALTITUDE KIT (6000-8000ft)	501-5084	1					RP5500						



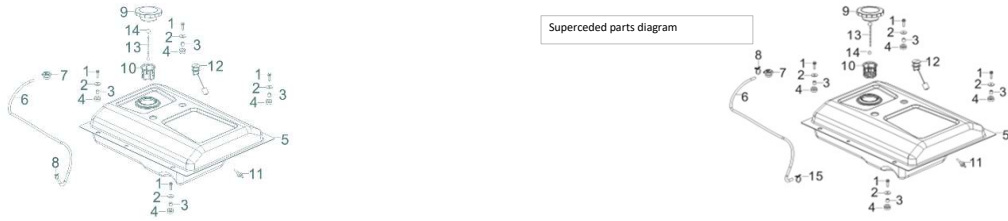
AIR CLEANER ASSY.

REF.NO.	Description	CAT Part Number	Group QTY	L mm	W mm	H mm	Weight g	Model	CAT Group Part Number	Group Name	L mm	W mm	H mm	Weight kg
1	GASKET, AIR CLEANER	511-7286	2	70	45	2	1.2	RP5500	512-8299	CLEANER GP-AIR-B	260	75	40	0.4764
2	CLEANER, AIR		1	260	15	75	448.2	RP5500						
3	NUT		2	15	6	15	6.8	RP5500						
4	FILTER, AIR CLEANER	511-7290	1	40	17	22	12.2	RP5500						



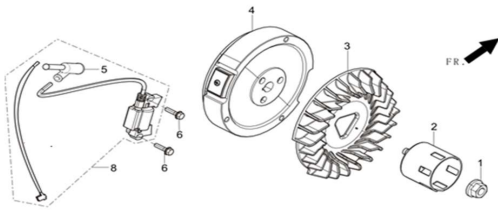
MUFFLER ASSY.

REF.NO.	Description	CAT Part Number	Group QTY	L mm	W mm	H mm	Weight g	Model	CAT Group Part Number	Group Name	L mm	W mm	H mm	Weight kg
3	GASKET, EXHAUST OUTLET	511-7291	1	70	46	1	8.4	RP5500	512-8273	MUFFLER GP	289	166	250	2.9629
4	BOLT		2	24	18	18	23	RP5500						
5	BOLT		2	24	18	18	23	RP5500						
6	MUFFLER ASSEMBLY		1	289	166	150	2500	RP5500						
7	NUT		2	13	13	7	4.6	RP5500						
8	BRACKET, MUFFLER		1	150	130	70	216	RP5500						
9	Muffler Air Guide Cover		1	18	13.5	13.5	6.5	RP5500						
10	BOLT		5	85	15	93	30	RP5500						
11	SPARK ARRESTOR	501-5080	1	85	15	93	30	RP5500						



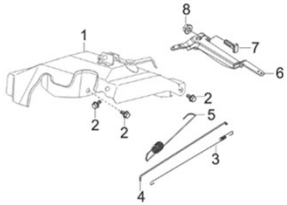
FUEL TANK ASSY.

REF.NO.	Description	CAT Part Number	Group QTY	L mm	W mm	H mm	Weight g	Model	CAT Group Part Number	Group Name	L mm	W mm	H mm	Weight kg
6	HOSE, FUEL STEAM RUBBER		1	870	10	10	43	RP5500	512-8302	VENT GP-FUEL	250	250	80	0.0704
7	ROLLOVER VALVE		1	33	50	33	24.2	RP5500						
8	CLAMP		1	20	8	20	1.6	RP5500						
9	FUEL CAP		1	96	40	96	189.6	RP5500	512-8303	CAP GP-FUEL	165	165	60	0.1952
13	CHAIN, FUEL CAP		1	165	10	165	5.4	RP5500						
14	CUP, FUEL CAP CHAIN		1	11	11	2	0.2	RP5500						
1	BOLT		4	31	14	14	8.8	RP5500	501-5423	TANK GP-FUEL (B)	640	510	200	6.1764
2	WASHER		4	25	2	25	27.4	RP5500						
3	BUSH		4	14	12	14	19	RP5500						
4	SLEEVE, FUEL TANK RUBBER		4	14	26	14	21	RP5500						
5	TANK, FUEL	511-7281	1	640	510	180	5748.2	RP5500						
12	LEVELER GAUGE, FUEL	501-5422	1	145	35	35	17.8	RP5500						
10	STRAINER, FUEL	511-8851	1	51	59	51	7.2	RP5500						
11	FUEL OUTLET NOZZLE	511-8853	1	54	21	21	4.2	RP5500						



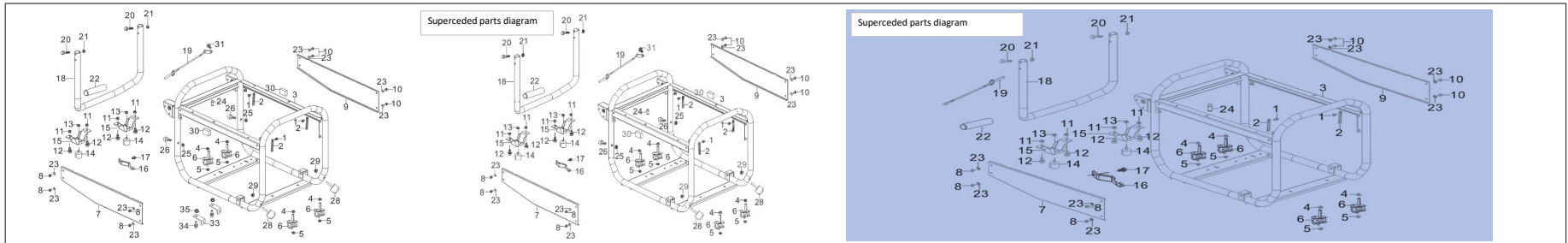
FLYWHEEL ASSY.

REF.NO.	Description	CAT Part Number	Group QTY	L mm	W mm	H mm	Weight g	Model	CAT Group Part Number	Group Name	L mm	W mm	H mm	Weight kg
1	NUT, FLYWHEEL		1	31	31	16	36.6	RP5500	512-8274	FLYWHEEL GP	203	203	140	4.5346
2	PULLEY, STARTER		1	65	65	69	181	RP5500						
3	IMPELLER		1	203	203	32	147	RP5500						
4	FLYWHEEL SUBASSEMBLY		1	180	180	45	4170	RP5500						
5	CAP, SPARK PLUG		1	87	35	21	28	RP5500	512-8275	COIL GP-IGNITION	453	54	50	0.2848
6	BOLT		2	35	14	14	8.4	RP5500						
8	COIL, IGNITION		1	453	54	28	240	RP5500						

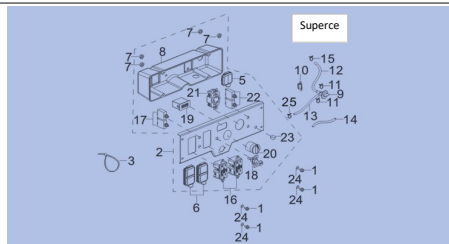
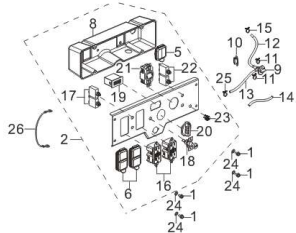


GOVERNOR CONTROL ASSY.

REF.NO.	Description	CAT Part Number	Group QTY	L mm	W mm	H mm	Weight g	Model	CAT Group Part Number	Group Name	L mm	W mm	H mm	Weight kg
1	CONTROL ASSY, THROTTLE		1	185	185	75	254	RP5500	512-8276	GOVERNOR GP -E	235	185	120	0.3425
2	BOLT		2	20	15	15	10.8	RP5500						
3	SPRING, THROTTLE VALVE RETURNING		1	221	6	15	0.8	RP5500						
4	ROD, GOVERNEOR		1	235	0.2	1	7.5	RP5500						
5	SPRING, GOVERNOR	511-7274	1	149	7	7	4	RP5500						
6	SUPPORT SUBASSEMBLY, GOVERNOR		1	65	46	27	45	RP5500						
7	BOLT, GOVERNOR SUPPORT		1	25	13.5	25	2.8	RP5500						
8	NUT		1	15	6	15	6.8	RP5500						

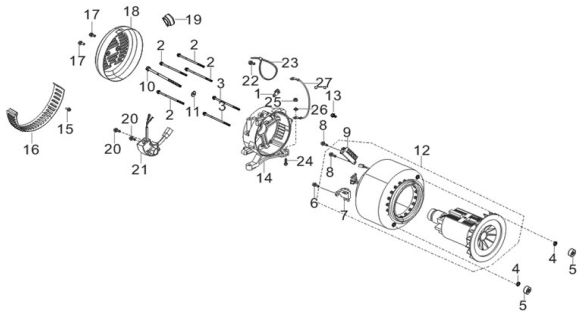


FRAME ASSY.														
REF.NO.	Description	CAT Part Number	Group QTY	L mm	W mm	H mm	Weight g	Model	CAT Group Part Number	Group Name	L mm	W mm	H mm	Weight kg
1	BOLT		2	85	15	93	30	RP5500	512-8277	FRAME GP	780	580	530	8.1675
2	CLIP		2	100	12	2	5	RP5500						
3	FRAME ASSY		1	780	530	580	8000	RP5500						
24	PROTECT RUBBER		1	13	10	10	1	RP5500						
25	NYLON NUT		2	8.65	8	5	3	RP5500						
26	CAP, HANDLE BUFFER		2	11.5	19.5	19.5	5	RP5500						
28	RUBBER CUSHION		2	67	34	34	55	RP5500						
29	CAP NUT		2	8.7	8.7	5	0.5	RP5500						
30	SOUND ABSORBING COTTON		2	50	25	25	0.2	RP5500						
4	NUT		4	21	12	21	47	RP5500						
5	NUT		4	8	17	8	26.6	RP5500						
6	ISOLATER, FRAME		4	86	80	45	86	RP5500						
7	LEFT SIDE PANEL		1	650	120	10	996.6	RP5500	512-8312	COVER GP-LH	650	120	30	1.027
8	BOLT		4	18	13.5	13.5	6.5	RP5500						
23	WASHER		4	12	12	1	0.4	RP5500	512-8313	COVER GP-RH	650	120	30	1.0242
9	RIGHT SIDE PANEL		1	650	120	10	996.6	RP5500						
10	BOLT		4	18	13.5	13.5	6.5	RP5500	512-8315	SUPPORT GP-FRAME	154	55	100	1.7532
23	WASHER		4	12	12	1	0.4	RP5500						
11	NUT		4	8	17	8	27.2	RP5500						
12	BOLT		4	25	17	25	47	RP5500	512-8278	SUPPORT GP-ACL	140	30	40	0.0286
13	NUT		2	8	17	8	13.6	RP5500						
14	FOOT, FRAME SUPPORT BRACKET		2	37	37	37	109.2	RP5500	512-8317	BRACKET GP -D	515	440	200	1.8236
15	SUPPORT BRACKET, FRAME		2	154	55	53	605.4	RP5500						
16	SUPPORT BRACKET, ATR CLEANER		1	140	21	30	6.6	RP5500						
17	BOLT		1	15	15	15	4.5	RP5500						
18	HANDLE		1	440	515	130	1600	RP5500						
19	LOCK PIN		1	25	2	25	37.4	RP5500						
20	BOLT		2	60	17	17	56.8	RP5500						
21	NUT		2	8	17	8	27.2	RP5500						
22	FOAM, HANDLE		1	208	40	40	21	RP5500						
31	BOLT		1	18	13.5	13.5	6.5	RP5500						



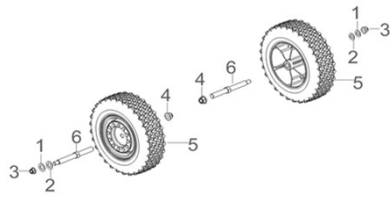
CONTROL PANEL ASSY.

REF.NO.	Description	CAT Part Number	Group QTY	L mm	W mm	H mm	Weight g	Model	CAT Group Part Number	Group Name	L mm	W mm	H mm	Weight kg
1	BOLT		4	85	15	93	30	RP5500						
2	PANEL SUBASSEMBLY, CONTROL		1	450	140	150	1958	RP5500	512-8279	PANEL GP-CONT -B	450	150	160	1.9932
24	WASHER		4					RP5500						
9	FUEL VALVE	511-7283	1	57	33	57	8.2	RP5500						
10	FUEL VALVE BASEMENT		1	40	1.3		2.8	RP5500						
11	CLAMP		2	20	8	20	1.6	RP5500	512-8320	VALVE GP-FUEL	57	57	60	0.0576
12	TUBE, FUEL		1	35	9		21	RP5500						
13	TUBE, FUEL		1	18	9		13.4	RP5500						
14	JACKET, RUBBER		1	45	13		2.6	RP5500						
15	CLAMP		1	20	9	10	1.6	RP5500						
25	CLAMP		1	20	9	10	1.6	RP5500						
5	RAIN COVER	511-8897	1	65	50	15	26.4	RP5500						
6	RAIN COVER, DUPLEX	511-8898	2	95	47	20	40.8	RP5500						
8	COVER, PANEL REAR	511-8894	1	392	115	100	224	RP5500						
16	SOCKET SUBASSEMBLY, POWER SUPPLY	511-8058	2	110	40	43	200	RP5500						
17	PROTECTOR, OVERCURRENT	511-8047	2					RP5500						
18	CHOKE CABLE	511-8036	1					RP5500						
19	TIMER	511-8060	1					RP5500						
20	SWITCH SUBASSEMBLY	511-8053	1					RP5500						
21	SOCKET SUBASSEMBLY, POWER SUPPLY	511-8056	1					RP5500						
22	PROTECTOR, OVERCURRENT	501-5085	2					RP5500						
23	LED LIGHT	501-5081	1					RP5500						
26	GROUND WIRE	530-1270	1					RP5500						
27	ON / OFF KNOB	501-5455	1	50	50	40	15	RP5500						



GENERATOR ASSY.

REF.NO.	Description	CAT Part Number	Group QTY	L mm	W mm	H mm	Weight g	Model	CAT Group Part Number	Group Name	L mm	W mm	H mm	Weight kg
1	TERMINAL SUBASSEMBLY, GROUNDING							RP5500						
2	BOLT							RP5500						
3	BOLT							RP5500						
4	WASHER							RP5500						
5	NUT							RP5500						
6	BOLT		1	21	12	12	4	RP5500						
7	BRUSH SUBASSEMBLY, CARBON		1	40	40	36	16	RP5500	501-5402	BRUSH GP	65	40	36	0.02
8	BOLT							RP5500						
9	BLOCK, TERMINAL							RP5500						
10	BOLT							RP5500						
11	WASHER							RP5500						
12	MOTOR ASSY.							RP5500						
13	BOLT							RP5500						
14	BRACKET, MOTOR							RP5500						
15	BOLT							RP5500						
16	SHROUD, MOTOR							RP5500						
22	BOLT							RP5500						
23	BAND							RP5500						
24	BOLT							RP5500						
25	NUT							RP5500						
26	LOCK WASHER							RP5500						
27	GROUND WIRE							RP5500						
17	BOLT		2	16	12	12	6.8	RP5500						
18	COVER, MOTOR TAIL		1	190	47	50	281	RP5500	512-8322	COVER GP	190	50	80	0.2984
19	STOPPER, MOTOR RIGHT COVER		1	30	20	14	3.8	RP5500						
20	BOLT		2	21	12	12	4	RP5500						
21	REGULATOR, VOLTAGE	511-7299	1	240	62.1	48	249	RP5500	512-8281	REGULATOR GP -H	240	63	60	0.257
28	GEN HEAD ASSY(Include items 1 - 27)	501-5086	1	360	250	260	26590	RP5500						



WHEEL ASSY.

REF.NO.	Description	CAT Part Number	Group QTY	L mm	W mm	H mm	Weight g	Model	CAT Group Part Number	Group Name	L mm	W mm	H mm	Weight kg
1	WASHER		2	20	0.5	20	4.8	RP5500	512-8324	WHEEL GP-TIRE&	240	240	50	3.4688
2	WASHER		2	24	24	1.2	3	RP5500						
3	NUT		2	10	18.5	10	16.4	RP5500						
4	NUT		2	10	18.5	10	16.4	RP5500						
6	AXLE, WHEEL		2	142	17	142	137.4	RP5500						
5	WHEEL	511-7307	2	240	80	240	1556.4	RP5500						

FULL ENGINE ASSY.

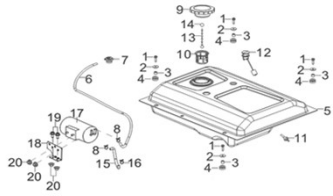
REF.NO.	Description	CAT Part Number	Group QTY	L mm	W mm	H mm	Weight g	Model	CAT Group Part Number	Group Name	L mm	W mm	H mm	Weight kg
1	ENGINE	511-8015	1					RP5500						



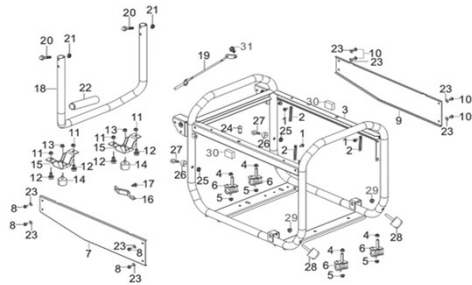
TOOL KIT.

REF.NO.	Description	CAT Part Number	Group QTY	L mm	W mm	H mm	Weight g	Model	CAT Group Part Number	Group Name	L mm	W mm	H mm	Weight kg
1	SPARK PLUG WRENCH KIT		1	155	23	23	137	RP5500	501-5146	TOOL GP	230	120	40	0.424
2	SCREWDRIVER		1	210	33	33	85	RP5500						
3	SPANNER, DOUBLE ENDED		2	135	30	5	67	RP5500						
4	SPANNER, DOUBLE ENDED		1	120	13	4	48	RP5500						
5	TOOL KIT BAG		1	230	120	20	20	RP5500						
6	FUNNEL, FILLING OIL	501-5147	1	380	110	80		RP5500						

CARB Version



REF.NO.	Description	CAT Part Number	Group QTY	L mm	W mm	H mm	Weight g	Model	CAT Group Part Number	Group Name	L mm	W mm	H mm	Weight kg
6	HOSE, FUEL STEAM RUBBER		1	870	10	10	43	RP5500	512-8326	VENT GP-FUEL	150	150	50	0.072
7	ROLLOVER VALVE		1	33	50	33	24.2	RP5500						
8	CLAMP		2	20	9	10	1.6	RP5500						
16	CLAMP		1	20	8	20	1.6	RP5500						
15	HOSE, AIR CLEANER RUBBER		1	175	38	10	16	RP5500	512-8327	DISPOSAL GP -A	185	105	150	0.5936
17	COLLECTOR, FUEL STEAM		1	185	105	90	422	RP5500						
18	ASSEMBLY PLATE, FUEL STEAM COLLECTOR		1	102	70	23	136	RP5500						
19	BOLT		2	18	13.5	13.5	6.5	RP5500						
20	NUT		4	15	6	15	6.8	RP5500						

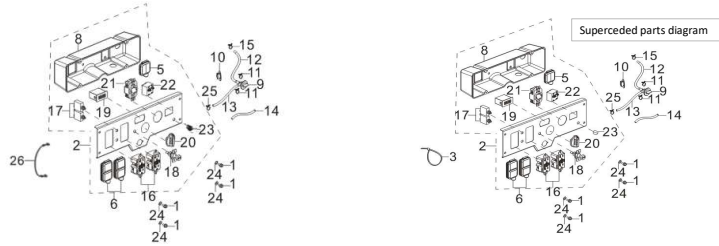


FRAME ASSY.

REF.NO.	Description	CAT Part Number	Group QTY	L mm	W mm	H mm	Weight g	Model	CAT Group Part Number	Group Name	L mm	W mm	H mm	Weight kg
1	BOLT		2	85	15	93	30	RP5500	512-8282	FRAME GP	780	580	530	8.1675
2	CLIP		2	100	12	2	5	RP5500						
3	FRAME ASSY		1	780	530	580	8000	RP5500						
24	PROTECT RUBBER		1	13	10	10	1	RP5500						
25	NYLON NUT		2	8.65	8	5	3	RP5500						
26	ISOLATOR		2	11.5	19.5	19.5	5	RP5500						
28	RUBBER CUSHION		2	67	34	34	55	RP5500						
29	CAP NUT		2	8.7	8.7	5	0.5	RP5500						
30	SOUND ABSORBING COTTON		2	50	25	25	0.2	RP5500						

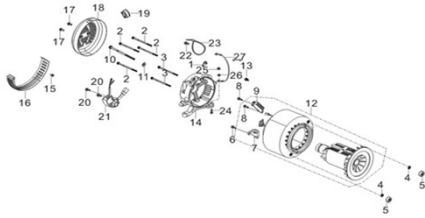
5500 CSA Version

FIG.17 PANEL SUBASSEMBLY, CONTROL (F62)



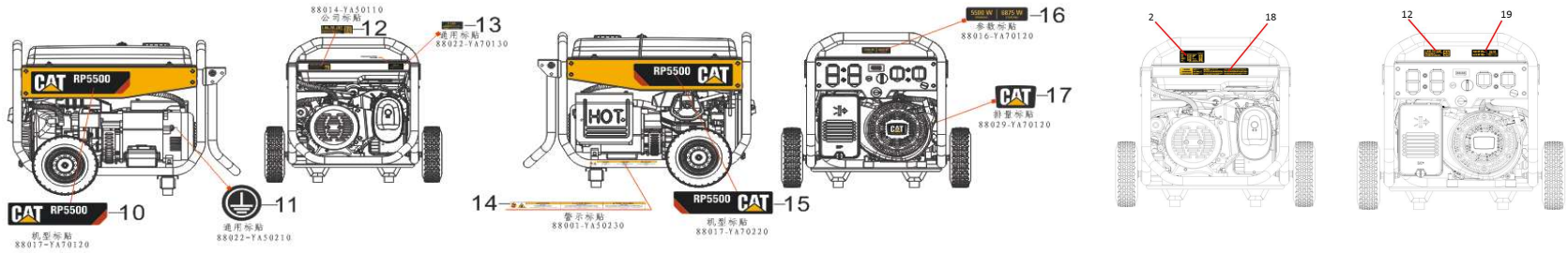
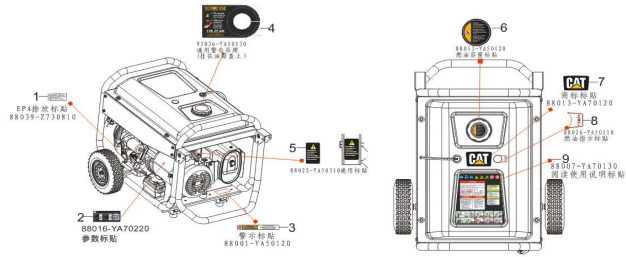
REF.NO.	Description	CAT Part Number	Group QTY	L mm	W mm	H mm	Weight g	Model	CAT Group Part Number	Group Name	L mm	W mm	H mm	Weight kg
2	PANEL SUBASSEMBLY, CONTROL	501-5107	1	450	140	150	1958	RP5500						
8	COVER, PANEL REAR	511-8894	1	392	115	100	224	RP5500						
19	TIMER	511-8060	1					RP5500						
20	SWITCH SUBASSEMBLY	501-5104	1					RP5500						
20a	ON/OFF KNOB	501-5455	1	50	50	40	15	RP5500						
22	BREAKER, DOUBLE-POLE	501-5108	1					RP5500						
26	GROUND WIRE	530-1270	1					RP5500						

FIG.18 ROTOR/STATOR (F63)



REF.NO.	Description	CAT Part Number	Group QTY	L mm	W mm	H mm	Weight g	Model	CAT Group Part Number	Group Name	L mm	W mm	H mm	Weight kg
20	BOLT		2	21	12	12	4	RP5500						
21	REGULATOR, VOLTAGE		1	240	62.1	48	249	RP5500	530-1263	REGULATOR GP -H	240	63	60	0.257
28	GEN HEAD ASSY(include F17-1 to 27)	501-5439	1	360	250	260	26590	RP5500						

5500 FIG.21 DECALS/MANUAL/QSG(E00)



REF.NO.	Description	CAT Part Number	Group QTY	L mm	W mm	H mm	Weight g	Model	CAT Group Part Number	Group Name	L mm	W mm	H mm	Weight kg
2	LABEL, SPEC EPA	501-5405	1	114	51			RP5500						
2	LABEL, SPEC CARB		1	114	51			RP5500						
3	LABEL, HOT SURFACE		1	135	15			RP5500						
5	LABEL, HANDLE WARNING		1	45	28			RP5500						
6	LABEL, FUEL SPEC		1	65	65			RP5500	501-5117	FILM GP	255	206	10	0.063
9	LABEL, GENERAL WARNING		1	206	223			RP5500						
11	LABEL, GROUND		1	11	11			RP5500						
14	LABEL, HOT EXHAUST		1	255	15			RP5500						
18	LABEL, COMBINED WARNING	501-5416	1	238	25			RP5500						
4	HANGTAG	501-5417	1	202	125			RP5500						
7	LABEL, TRADEMARK		1	105	64			RP5500						
10	LABEL, MODEL LEFT		1	363	90			RP5500	501-5118	FILM GP	363	90	8	0.056
15	LABEL, MODEL RIGHT		1	363	90			RP5500						
17	LABEL, RECOIL LOGO		1	62	38			RP5500						
12	LABEL, QR CODE		1	87.5	25			RP5500	501-5424	FILM GP	87.5	25	5	0.004
19	LABEL, COMBINED WEIGHT & RATING		1	87.5	25			RP5500						

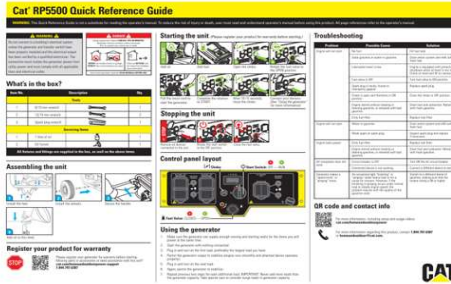
CAT

Owner's Manual

RP3600, RP5500, RP6500 E and RP7500 E Portable Generators



18



19



REF.NO.	Description	CAT Part Number	Group QTY	L mm	W mm	H mm	Weight g	Model	CAT Group Part Number	Group Name	L mm	W mm	H mm	Weight kg
18	MANUAL	501-6075	1	212	275			RP5500						
19	QUICK START GUIDE EPA/CARB/CSA	501-5131	1	207	142.5			RP5500						
20	CARTON EPA							RP5500						
20	CARTON CARB							RP5500						
20	CARTON CSA							RP5500						

Last Update February 17, 2023

RP3600, RP5500, RP6500 E, RP7500 E and RP12000 E Compatible

Features

- All components necessary to complete standard maintenance
- Manufacturer approved kit that includes genuine parts
- Helps to maintain reliability and efficiency
- Reduces the risk of unplanned repairs



Kit Contents

RP3600

- Oil Bottle 32 Fl. Oz. (946 ml)
- Spark Plug
- Air Filter

RP5500

- Oil Bottle 32 Fl. Oz. (946 ml)
- Spark Plug
- Air Filter

RP6500 E and RP7500E

- Oil Bottle 32 Fl. Oz. (946 ml)
- Spark Plug
- Air Filter

RP12000 E

- Oil Bottle 32 Fl. Oz. (946 ml) x 2
- Spark Plug x 2
- Air Filter
- Oil Filter

Weights & Dimensions (Packaged)

Weight lb (kg)	1.18 (0.54)
Length in (mm)	8 (235)
Width in (mm)	5 (127)
Height in (mm)	4 (102)

Weight lb (kg)	1.97 (0.89)
Length in (mm)	9 (203)
Width in (mm)	6 (152)
Height in (mm)	4 (102)

Weight lb (kg)	1.97 (0.89)
Length in (mm)	9 (203)
Width in (mm)	6 (152)
Height in (mm)	4 (102)

Weight lb (kg)	5.5 (2.5)
Length in (mm)	8.07 (205)
Width in (mm)	6.89 (175)
Height in (mm)	9.45 (240)

Cat® Part Number

502-3702

502-3703

502-3704

501-3704

Dealer Contact Information