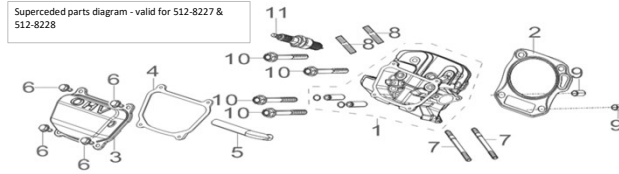
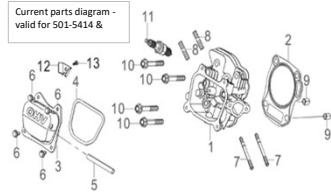


EPA Version RP3600 PARTS LIST

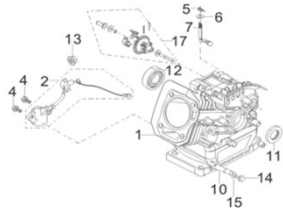
Important Information

The service parts list information provided within the Parts Diagram document is all inclusive of the service parts which are presently available for the defined model. Not all individual parts are serviceable at the piece part level. If an itemized part does not have a defined corresponding service part listed, the defined group level service part must be ordered.



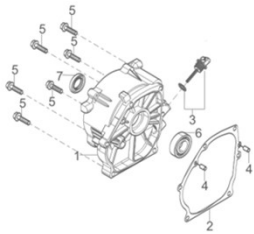
CYLINDER ASSY.

REF.NO.	Description	CAT Part Number	Group QTY	L mm	W mm	H mm	Weight g	Model	CAT Group Part Number	Group Name	L mm	W mm	H mm	Weight kg
3	COVER SUBASSEMBLY, CYLINDER HEAD		1	120	110	40	192	RP3600	501-5414	COVER GP-CYL HD	120	110	56	0.2824
4	GASKET, CYLINDER HEAD COVER	501-5413	1	90	112	2	2.4	RP3600						
6	BOLT		4	19	14	19	22	RP3600						
5	TUBE, BREATHER	511-8859	1	100	100	15	9	RP3600						
1	HEAD SUBASSEMBLY, CYLINDER		1	160	150	100	790	RP3600	501-5415	HEAD GP-CYL BSC	160	150	140	1.315
2	GASKET, CYLINDER HEAD	511-7252	1	110	115	2	7.8	RP3600						
7	STUD		2	90	10	10	19	RP3600						
8	STUD		2	34	8	8	20	RP3600						
9	PIN		2	15	12	15	4.8	RP3600						
10	BOLT, CYLINDER HEAD		4	70	70	20	107.4	RP3600						
11	PLUG, SPARK	511-7296	1	23	23	82	60	RP3600						
12	RETAINER		1					RP3600	530-1262	RETAINER GP	40	40	40	0.200
13	BOLT		1					RP3600						



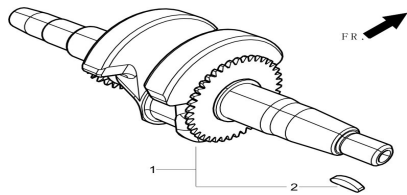
CRANKCASE ASSY.

REF.NO.	Description	CAT Part Number	Group QTY	L mm	W mm	H mm	Weight g	Model	Group Name	L mm	W mm	H mm	Weight kg
1	CRANKCASE SUBASSEMBLY.		1	270	150	240	2572	RP3600	CRANKCASE GP	270	240	180	2.765
10	DRAIN PIPE		1	50	14	14	30	RP3600					
11	SEAL, OIL		1	40	40	7	8.8	RP3600					
12	BEARING, DEEP GROOVE BALL		1	55	55	16	128	RP3600					
14	BOLT, DRAIN PLUG		1	30	22	0	24	RP3600					
15	WASHER, FLAT	501-5404	1	17	17	2	2.2	RP3600					
2	SENSOR, ENGINE OIL		1	90	70	70	51.8	RP3600					
4	BOLT		2	15	15	15	5.5	RP3600					
13	NUT		1	19	19	9	8	RP3600					
5	COTTER		1	20	8	2	0.6	RP3600	LEVER GP-CAL	80	40	20	0.0192
6	WASHER, FLAT		1	30	10	2	0.6	RP3600					
7	ARM, GOVERNOR		1	80	40	10	18	RP3600					
17	GEAR ASSY, GOVERNOR	511-8846	1	55	50	50	29	RP3600					



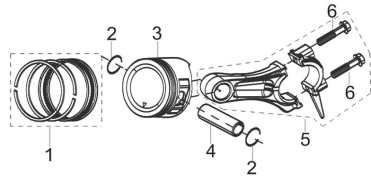
CRANKCASE COVER

REF.NO.	Description	CAT Part Number	Group QTY	L mm	W mm	H mm	Weight g	Model	CAT Group Part Number	Group Name	L mm	W mm	H mm	Weight kg
1	COVER, CRANKCASE		1	210	220	110	1044	RP3600	512-8232	COVER GP-REAR	220	210	160	1.6999
2	GASKET, CRANKCASE		1	180	180	1	4.5	RP3600						
3	DIPSTICK SUBASSEMBLY, OIL	501-5076	1	65	30	30	8.2	RP3600						
4	PIN		2	12	9	9	3.6	RP3600						
5	BOLT		6	41	41	16	106	RP3600	512-8233	BEARING GP -B	55	55	30	0.1368
6	BEARING, DEEP GROOVE BALL	501-5077	1	55	55	16	128	RP3600						
7	SEAL, OIL	511-7314	1	40	40	7	8.8	RP3600						



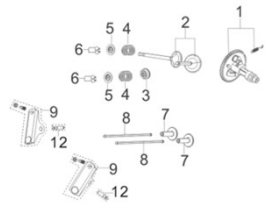
CRANKSHAFT ASSY.

REF.NO.	Description	CAT Part Number	Group QTY	L mm	W mm	H mm	Weight g	Model	CAT Group Part Number	Group Name	L mm	W mm	H mm	Weight kg
1	CRANKSHAFT ASSY.	511-7266	1	250	100	90	1732	RP3600						



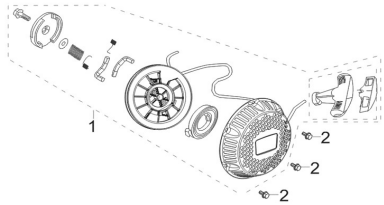
PISTON/CONNECTING ROD

REF.NO.	Description	CAT Part Number	Group QTY	L mm	W mm	H mm	Weight g	Model	CAT Group Part Number	Group Name	L mm	W mm	H mm	Weight kg
1	PISTON RINGS SET		1	70	70	4	8	RP3600	512-8234	PISTON GP	130	120	100	0.376
2	CLIP, PISTON PIN		2	20	20	1	0.8	RP3600						
3	PISTON		1	70	50	50	151.8	RP3600						
4	PIN, PISTON		1	55	55	20	41.6	RP3600						
5	ROD, CONNECTING		1	130	120	30	140	RP3600						
6	BOLT, CONNECTING ROD		2	44	15	15	16.5	RP3600						



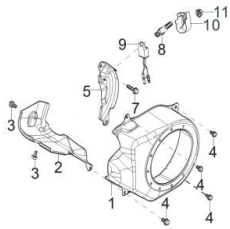
CAMSHAFT ASSY.

REF.NO.	Description	CAT Part Number	Group QTY	L mm	W mm	H mm	Weight g	Model	CAT Group Part Number	Group Name	L mm	W mm	H mm	Weight kg
1	CAMSHAFT ASSY.		1	110	110	100	235.8	RP3600	512-8235	CAMSHAFT GP	110	110	160	0.6318
2	VALVES SET		1	73	27	27	40	RP3600						
3	GUIDE, SEAL		1	22	10	10	2	RP3600						
4	SPRING, VALVE		2	33	20	20	11	RP3600						
5	SEAT, VALVE SPRING		2	25	10	10	14.4	RP3600						
6	CLAMP, VALVE LOCK		4	50	10	10	2.2	RP3600						
7	TAPPET, VALVE		2	40	40	25	39	RP3600						
8	LIFTER SUBASSEMBLY, VALVE		2	47	47	8	28	RP3600						
9	ROCKER ARM, VALVE		2	60	28	20	68.2	RP3600						
12	ROCKER SHAFT		2	30	10	10	12	RP3600						



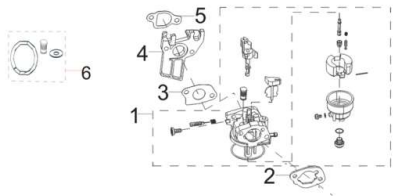
RECOIL ASSY.

REF.NO.	Description	CAT Part Number	Group QTY	L mm	W mm	H mm	Weight g	Model	CAT Group Part Number	Group Name	L mm	W mm	H mm	Weight kg
1	STARTER ASSY, RECOIL		1	240	180	80	510.6	RP3600	512-8236	PULLEY GP-CSHAFT	240	180	100	0.5544
2	BOLT		3	15	15	11	14.6	RP3600						



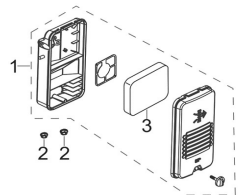
SHROUD ASSY.

REF.NO.	Description	CAT Part Number	Group QTY	L mm	W mm	H mm	Weight g	Model	CAT Group Part Number	Group Name	L mm	W mm	H mm	Weight kg
1	SHROUD		1	270	230	90	492.2	RP3600	512-8237	SHROUD GP-AIR	270	230	250	0.8132
2	SHROUD, CYLINDER BODY		1	200	80	190	154.4	RP3600						
3	BOLT		2	13	11	13	5	RP3600						
4	BOLT		4	19	14	19	22	RP3600						
5	SHIELD, LOWER		1	200	60	80	63.2	RP3600						
7	BOLT		1	13	13	20	5.4	RP3600						
8	BOLT, WIRE PROTECT COVER		1	37	11	11	11	RP3600						
9	PROTECTOR, OIL		1	50	30	20	22	RP3600	512-8238	COVER GP	77	55	80	0.06
10	WIRE PROTECT COVER		1	77	55	42	24	RP3600						
11	NUT		1	13.5	13.5	6	3	RP3600						



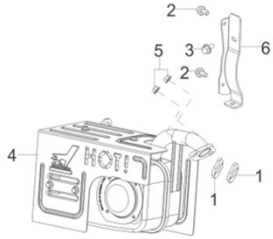
CARBURETOR ASSY.

REF.NO.	Description	CAT Part Number	Group QTY	L mm	W mm	H mm	Weight g	Model	CAT Group Part Number	Group Name	L mm	W mm	H mm	Weight kg
1	CARBURETOR ASSY.	511-7278	1	120	90	90	259.2	RP3600	512-8239	CARBURETOR GP-B	120	90	140	0.2998
2	GASKET, CARBURETOR INSULATOR	511-7285	1	60	40	2	1.4	RP3600						
3	GASKET, AIR CLEANER	511-7268	1	60	40	2	0.6	RP3600						
4	GASKET, CARBURETOR	511-7272	1	100	80	40	38	RP3600						
5	PLATE, CARBURETOR INSULATOR	511-8837	1	60	40	2	0.6	RP3600						
6	HIGH ALTITUDE KIT 1(3000-6000R)	501-5078	1					RP3600						
	HIGH ALTITUDE KIT 2(6000-8000R)	501-5079	1					RP3600						



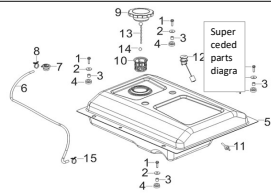
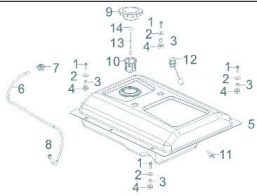
AIR CLEANER ASSY.

REF.NO.	Description	CAT Part Number	Group QTY	L mm	W mm	H mm	Weight g	Model	CAT Group Part Number	Group Name	L mm	W mm	H mm	Weight kg
1	CLEANER, AIR		1	200	110	110	253	RP3600	512-8240	CLEANER GP-AIR-B	200	110	120	0.2762
2	NUT		2	15	6	15	6.8	RP3600						
3	FILTER, AIR CLEANER	511-7289	1	14	14	3	9.6	RP3600						
4	BRACKET, LOWER		1					RP3600	501-5432	SUPPORT GP-ACL	140	30	40	0.0286
5	BOLT		1					RP3600						



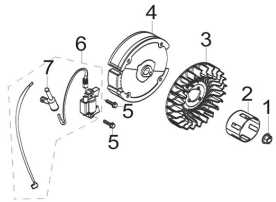
MUFFLER ASSY.

REF.NO.	Description	CAT Part Number	Group QTY	L mm	W mm	H mm	Weight g	Model	CAT Group Part Number	Group Name	L mm	W mm	H mm	Weight kg
1	GASKET, EXHAUST OUTLET	511-7292	2	70	40	1	6.2	RP3600	512-8241	MUFFLER GP	320	230	230	3.5746
2	BOLT		2	24	18	18	23	RP3600						
3	BOLT		1	19	14	19	22	RP3600						
4	MUFFLER ASSEMBLY		1	320	230	160	3273	RP3600						
5	NUT		2	13	13	7	9.6	RP3600						
6	BRACKET,MUFFLER		1	183	73	33	172	RP3600						
11	SPARK ARRESTOR	501-5080	1	85	15	93	30	RP5500						



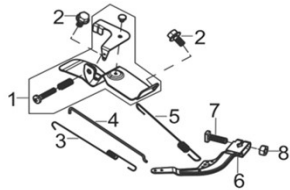
FUEL TANK ASSY.

REF.NO.	Description	CAT Part Number	Group QTY	L mm	W mm	H mm	Weight g	Model	CAT Group Part Number	Group Name	L mm	W mm	H mm	Weight kg
1	BOLT		4	32	14	32	35.2	RP3600	512-8242	TANK GP-FUEL (B)	532	442	150	4.0282
2	WASHER		4	25	2	25	27.4	RP3600						
3	BUSH		4	14	12	14	19	RP3600						
4	SLEEVE, FUEL TANK RUBBER		4	14	26	14	21	RP3600						
5	TANK, FUEL		1	532	442	120	3600	RP3600						
12	LEVELER GAUGE, FUEL	511-8903	1	145	35	35	17.8	RP3600						
9	FUEL CAP		1	96	40	96	189.6	RP3600	512-8243	CAP GP-FUEL	165	165	60	0.1952
13	CHAIN, FUEL CAP		1	165	10	165	5.4	RP3600						
14	CLIP, FUEL CAP CHAIN		1	11	11	2	0.2	RP3600						
6	HOSE, FUEL STEAM RUBBER		1	870	10	10	43	RP3600	512-8244	VENT GP-FUEL	870	33	60	0.0704
7	ROLLOVER VALVE		1	33	50	33	24.2	RP3600						
8	CLAMP		1	20	9	10	1.6	RP3600						
10	STRAINER, FUEL	511-8851	1	51	59	51	7.2	RP3600						
11	FUEL OUTLET NOZZLE	511-8853	1	54	21	21	4.2	RP3600						



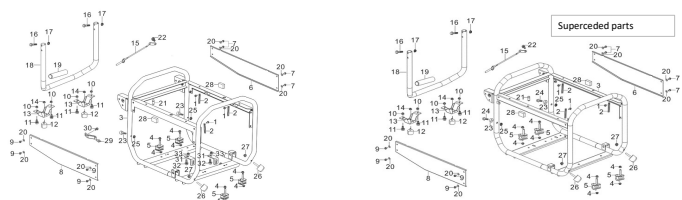
FLYWHEEL ASSY.

REF.NO.	Description	CAT Part Number	Group QTY	L mm	W mm	H mm	Weight g	Model	CAT Group Part Number	Group Name	L mm	W mm	H mm	Weight kg
1	NUT, FLYWHEEL		1	30	30	20	22.4	RP3600	512-8245	FLYWHEEL GP	180	180	180	2.7952
2	CUP, STARTER		1	60	60	70	126	RP3600						
3	IMPELLER		1	180	180	40	95.8	RP3600						
4	FLYWHEEL SUBASSEMBLY		1	180	180	60	2551	RP3600	512-8246	COIL GP-IGNITION	140	80	120	0.2716
5	BOLT		2	35	15	15	8.6	RP3600						
6	COIL, IGNITION		1	140	80	70	225.6	RP3600						
7	CAP, SPARK PLUG		1	87	35	21	28.8	RP3600						



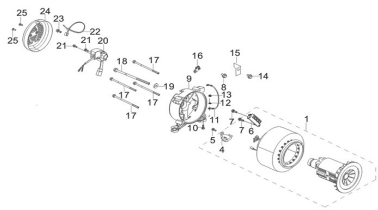
GOVERNOR CONTROL ASSY.

REF.NO.	Description	CAT Part Number	Group QTY	L mm	W mm	H mm	Weight g	Model	CAT Group Part Number	Group Name	L mm	W mm	H mm	Weight kg
1	CONTROL ASSY, THROTTLE		1	120	40	70	66	RP3600	512-8247	GOVERNOR GP -E	140	80	120	0.1388
2	BOLT		2	20	15	15	10.8	RP3600						
3	SPRING, THROTTLE VALVE RETURNING		1	100	20	10	1	RP3600						
4	ROD, GOVERNEOR		1	140	10	10	4	RP3600						
5	SPRING, GOVERNOR	511-7276	1	100	20	10	2.6	RP3600						
6	SUPPORT SUBASSEMBLY, GOVERNOR		1	130	80	30	34	RP3600						
7	BOLT, GOVERNOR SUPPORT		1	25	13.5	25	2.8	RP3600						
8	NUT		1	15	6	15	6.8	RP3600						



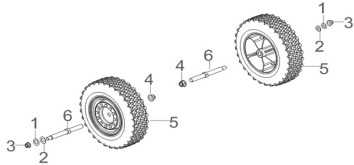
FRAME ASSY.

REF.NO.	Description	CAT Part Number	Group QTY	L mm	W mm	H mm	Weight g	Model	CAT Group Part Number	Group Name	L mm	W mm	H mm	Weight kg
1	BOLT		2	20	17	17	6.8	RP6500E/7500E	512-8248	FRAME GP	665	520	445	6.1511
2	CLIP		2	100	12	2	5	RP6500E/7500E						
3	FRAME ASSY		1	665	445	520	6000	RP3600						
21	PROTECT RUBBER		1	14	14	18	0.5	RP6500E/7500E						
22	BOLT		2	20	17	17	6.8	RP6500E/7500E						
23	ISOLATOR		2	11.5	19.5	19.5	5	RP6500E/7500E						
25	NYLON NUT		2	8.65	8	5	3	RP6500E/7500E						
26	RUBBER CUSHION		2	60	34	34	41	RP6500E/7500E						
27	CAP NUT		2	8.7	8.7	5	0.5	RP6500E/7500E						
28	SOUND ABSORBING COTTON		2	50	25	25	0.2	RP6500E/7500E						
4	NUT		8	8	17	8	26.6	RP3600	512-8249	ISOLATOR GP	77	45	45	1.4128
5	ISOLATER, FRAME		4	77	37	45	300	RP3600						
6	RIGHT SIDE PANEL		1	542	113	12	865.8	RP3600	512-8250	COVER GP-RH	542	113	30	0.8962
7	BOLT		4	20	17	17	6.8	RP3600						
20	WASHER		8	12	12	1	0.4	RP3600	512-8251	COVER GP-LH	542	113	30	0.8962
8	LEFT SIDE PANEL		1	542	113	12	865.8	RP3600						
9	BOLT		4	20	17	17	6.8	RP3600						
20	WASHER		8	12	12	1	0.4	RP3600	512-8252	SUPPORT GP-FRAME	154	37	55	1.7532
10	NUT		4	8	17	8	27.2	RP3600						
11	BOLT		4	25	17	25	47	RP3600						
12	FOOT, FRAME SUPPORT BRACKET		2	37	37	37	109.2	RP3600						
13	SUPPORT BRACKET, FRAME		2	154	55	53	605.4	RP3600						
14	NUT		2	8	17	8	13.6	RP3600						
15	LOCK PIN		1	64	30	7	27.8	RP3600	512-8253	BRACKET GP -D	455	455	400	1.1963
16	BOLT		2	60	17	17	56.8	RP3600						
17	NUT		2	8	17	8	27.2	RP3600						
18	HANDLE		1	455	455	375	1000	RP3600						
19	FOAM,HANDLE		1	14	14	18	0.5	RP3600						
31	FOOT, FRAME SUPPORT BRACKET		2					RP3600						
32	BOLT		2					RP3600						
33	NUT		2					RP3600						



GENERATOR ASSY.

REF.NO.	Description	CAT Part Number	Group QTY	L mm	W mm	H mm	Weight g	Model	CAT Group Part Number	Group Name	L mm	W mm	H mm	Weight kg
1	MOTOR ASSY.							RP3600						
4	BRUSH SUBASSEMBLY, CARBON		1	33	40	36	15	RP3600	501-5406	BRUSH GP	60	40	36	0.019
5	BOLT		1	21	12	12	4	RP3600						
6	BLOCK, TERMINAL							RP3600						
7	BOLT							RP3600						
8	BOLT							RP3600						
9	BRACKET, MOTOR							RP3600						
10	BOLT							RP3600						
11	GROUND WIRE							RP3600						
12	LOCK WASHER							RP3600						
13	NUT							RP3600						
14	BOLT							RP3600						
15	STOPPER, MOTOR RIGHT COVER							RP3600						
16	TERMINAL SUBASSEMBLY, GROUNDING							RP3600						
17	BOLT							RP3600						
18	BOLT							RP3600						
19	WASHER							RP3600						
22	BAND							RP3600						
20	REGULATOR, VOLTAGE		1	110	33	21	121.8	RP3600						
21	BOLT		2	21	12	12	4	RP3600	512-8256	REGULATOR GP -H	110	33	40	0.1298
24	COVER, MOTOR TAIL		1	160	160	28	182.2	RP3600						
24	BOLT		2	16	12	12	6.8	RP3600	512-8257	COVER GP	160	160	40	0.1958
25	BOLT							RP3600						
26	GENHEAD ASSY(include items 1 to 25)	501-5082	1	300	200	210	17700	RP3600						



WHEEL ASSY.

REF.NO.	Description	CAT Part Number	Group QTY	L mm	W mm	H mm	Weight g	Model	CAT Group Part Number	Group Name	L mm	W mm	H mm	Weight kg
1	WASHER		2	20	0.5	20	4.8	RP3600	512-8258	WHEEL GP-TIRE&	240	240	125	3.4688
2	WASHER		2	24	24	1.5	3	RP3600						
3	NUT		2	10	18.5	10	16.4	RP3600						
4	NUT		2	10	18.5	10	16.4	RP3600						
5	WHEEL	511-7307	2	240	80	240	1556.4	RP3600						
6	AXLE, WHEEL		2	142	17	142	137.4	RP3600						

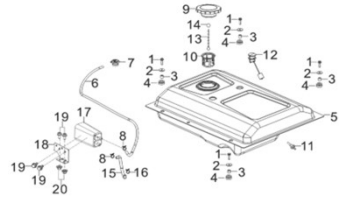
FULL ENGINE ASSY.

REF.NO.	Description	CAT Part Number	Group QTY	L mm	W mm	H mm	Weight g	Model	CAT Group Part Number	Group Name	L mm	W mm	H mm	Weight kg
E00-1	ENGINE R210-V	501-5096	1					RP3600 EPA/CARB/CSA						



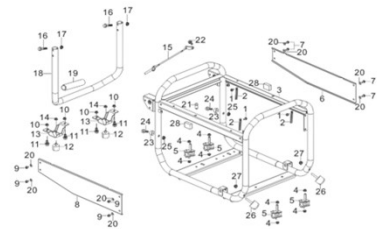
TOOL KIT.

REF.NO.	Description	CAT Part Number	Group QTY	L mm	W mm	H mm	Weight g	Model	CAT Group Part Number	Group Name	L mm	W mm	H mm	Weight kg
1	SPARK PLUG WRENCH KIT		1	155	23	23	137	RP3600	501-5146	TOOL GP	230	120	40	0.424
2	SCREWDRIVER		1	210	33	33	85	RP3600						
3	SPANNER, DOUBLE ENDED		2	135	30	5	67	RP3600						
4	SPANNER, DOUBLE ENDED		1	120	13	4	48	RP3600						
5	TOOL KIT BAG		1	230	120	20	20	RP3600						
6	FUNNEL, FILLING OIL	501-5147	1	380	110	80		RP3600						



**CARB Version
FUEL TANK ASSY.**

REF.NO.	Description	CAT Part Number	Group QTY	L mm	W mm	H mm	Weight g	Model	CAT Group Part Number	Group Name	L mm	W mm	H mm	Weight kg
6	HOSE, FUEL STEAM RUBBER		1	870	10	10	43	RP3600	512-8259	VENT GP-FUEL	150	150	50	0.051
7	ROLLOVER VALVE		1	20	9	10	1.6	RP3600						
8	CLAMP		2	130	75	10	10	RP3600						
16	CLAMP		1	20	8	20	1.6	RP3600						
15	HOSE, AIR CLEANER RUBBER		1	130	75	10	10	RP3600	512-8260	DISPOSAL GP -A	150	85	100	0.4382
17	COLLECTOR, FUEL STEAM		1	150	60	85	259	RP3600						
18	ASSEMBLY PLATE, FUEL STEAM COLLECTOR		1	102	70	23	136	RP3600						
19	BOLT		4	20	17	17	6.8	RP3600						
19	BOLT		4	20	17	17	6.8	RP3600						
20	NUT		2	13.5	13.5	6	3	RP3600						



FRAME ASSY.

REF.NO.	Description	CAT Part Number	Group QTY	L mm	W mm	H mm	Weight g	Model	CAT Group Part Number	Group Name	L mm	W mm	H mm	Weight kg
1	BOLT		2	20	17	17	6.8	RP3600	512-8261	FRAME GP	665	520	445	6.1511
2	CLIP		2	100	12	2	5	RP3600						
3	FRAME ASSY		1	665	445	520	6000	RP3600						
21	PROTECT RUBBER		1	14	14	18	0.5	RP3600						
22	BOLT		2	20	17	17	6.8	RP3600						
23	ISOLATOR		2	11.5	19.5	19.5	5	RP3600						
25	NYLON NUT		2	8.65	8	5	3	RP3600						
26	RUBBER CUSHION		2	60	34	34	41	RP3600						
27	CAP NUT		2	8.7	8.7	5	0.5	RP3600						
28	SOUND ABSORBING COTTON		2	50	25	25	0.2	RP3600						

3600 CSA Version

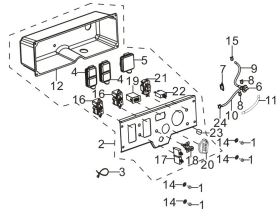
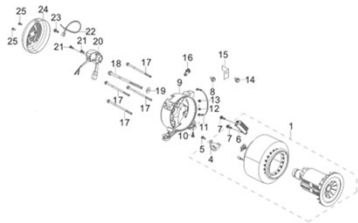


FIG.17 PANEL SUBASSEMBLY, CONTROL (F62)

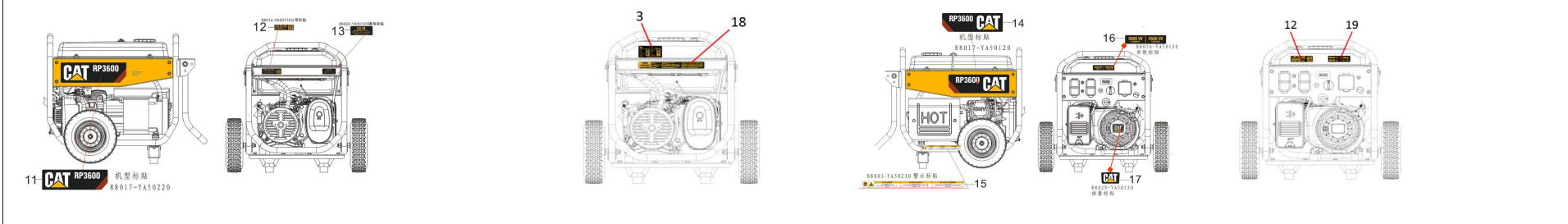
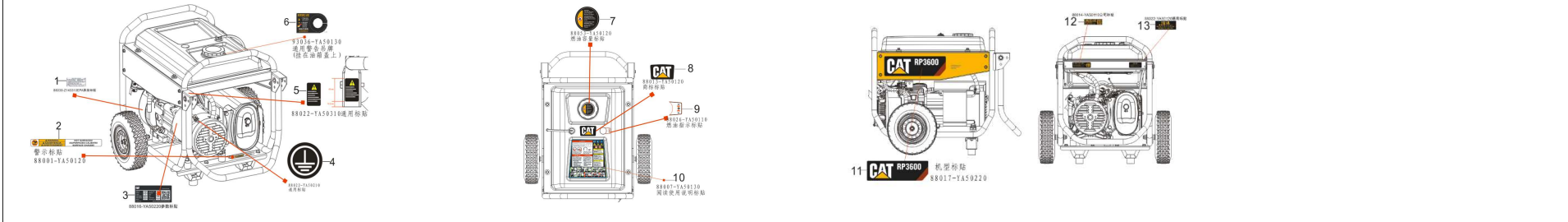
REF.NO.	Description	CAT Part Number	Group QTY	L mm	W mm	H mm	Weight g	Model	CAT Group Part Number	Group Name	L mm	W mm	H mm	Weight kg
2	PANEL SUBASSEMBLY, CONTROL	501-5102	1	405	160	120	1670.5	RP3600						
12	COVER, PANEL REAR	501-5103	1	392	115	100	224	RP3600						
20	SWITCH SUBASSEMBLY	501-5104	1					RP3600						
20a	ON / OFF KNOB	501-5455	1	50	50	40	15	RP3600						
22	PROTECTOR, OVERCURRENT	501-5105	1					RP3600						

FIG.18 ROTOR/STATOR (F63)



REF.NO.	Description	CAT Part Number	Group QTY	L mm	W mm	H mm	Weight g	Model	CAT Group Part Number	Group Name	L mm	W mm	H mm	Weight kg
20	REGULATOR, VOLTAGE		1	110	33	24	121.8	RP3600	530-1264	REGULATOR GP -H	110	33	40	0.1298
21	BOLT		2	21	12	12	4	RP3600						
26	GENHEAD ASSY(include items 1 - 25)	501-5438	1	300	200	210	17700	RP3600						

3600 FIG.21 DECALS/MANUAL/QSG(E00)



REF.NO.	Description	CAT Part Number	Group QTY	L mm	W mm	H mm	Weight g	Model	CAT Group Part Number	Group Name	L mm	W mm	H mm	Weight kg
2	LABEL_HOT SURFACE		1	135	15			RP3600	501-5113	FILM GP	255	180	10	0.016
4	LABEL_GROUND		1	11	11		RP3600							
5	LABEL_HANDLE WARNING		1	45	28		RP3600							
7	LABEL_FUEL SPEC		1	65	65		RP3600							
10	LABEL_GENERAL WARNING		1	183	180		RP3600							
15	LABEL_HOT EXHAUST		1	255	15		RP3600							
18	LABEL_COMBINED WARNING		1	238	25		RP3600							
6	HANGTAG	501-5416	1	202	125		RP3600	501-5114	FILM GP	296	90	6	0.022	
3	LABEL_SPEC	501-5417	1	114	51		RP3600							
8	LABEL_TRADEMARK	501-5407	1	85	50		RP3600							
11	LABEL_MODEL LEFT		1	296	90		RP3600							
14	LABEL_MODEL RIGHT		1	296	90		RP3600							
9	LABEL_FUEL GAUGE	501-5124	1	28	30		RP3600	501-5418	FILM GP	105	25	4	0.002	
12	LABEL_OR CODE		1	87.5	25		RP3600							
19	LABEL_COMBINED WEIGHT & RATING		1	105	25		RP3600							



REF.NO.	Description	CAT Part Number	Group QTY	L mm	W mm	H mm	Weight g	Model	CAT Group Part Number	Group Name	L mm	W mm	H mm	Weight kg
18	MANUAL	501-6075	1	212	275			RP3600	501-5116	FILM GP	207	142.5		
19	QUICK START GUIDE EPA/CARB	501-5130	1	207	142.5			RP3600						
19	QUICK START GUIDE CSA	501-5116	1	207	142.5			RP3600						

Last Update March 8, 2023