



BACKHOE LOADER CENTER PIVOT MODELS PARTS REFERENCE GUIDE

415/415IL, 416, 420/420XE, 430, 440, 450

SERIAL NUMBER PREFIX: H8A, H6L, H8P, H8T, H9X, H8W, DC9, MZX, KJH, DYN

LET'S DO THE WORK.™




» PROTECT YOUR INVESTMENT WITH GENUINE CAT® PARTS

Thank you for selecting the Cat® Backhoe Loader.

This guide is designed to provide you with a quick reference for the parts and part numbers you need to keep your Cat Backhoe Loader operating at peak efficiency.

MAINTENANCE

Proactive preventative maintenance extends the life of your machine and protects your investment. Only Caterpillar knows Cat equipment's filtration and lubrication requirements and offers parts kits to match your machine's maintenance cycles.

SCHEDULED MAINTENANCE PARTS	
	GREASES
	PLANNED MAINTENANCE

REPLACEMENT PARTS

Proper maintenance minimizes the need for repair and replacement. In the event that replacement parts are required, the use of genuine Cat parts helps maximize machine performance and maintains high resale value.

WEAR PARTS	SALES MODEL	SERIAL NUMBER PREFIX
GROUND ENGAGING TOOLS	415	H8A
WEARPADS AND SHIMS	415 IL	H6L
REPAIR PARTS		
BATTERY	416	H8P
ENGINE PARTS	420 / 420XE	H8T, H9X
MIRRORS, LIGHTS AND FUSES	430	H8W
CAB GLASS	440	DC9, MZX
ENHANCEMENT PARTS		
QUICK DISCONNECTS	450	KJH, DYN
LINKAGE PIN AND BEARING PARTS		

GREASES

Previous Cat Product Name	STANDARD MAINTENANCE GREASES			GREASES FOR UNIQUE APPLICATIONS AND ENVIRONMENTS
	Cat Ultra5 Moly #1	Cat Ultra5 Moly #2	Cat Advanced 3 Moly	
Current Cat Product Name	Cat Extreme Application Grease 1	Cat Extreme Application Grease 2	Cat Prime Application Grease	Hammer Paste
Grade (NLGI)	1	2	2	2
Melting Point C° (F°)	>260 (>500)	>260 (>500)	260 (500)	230 (446)
Ambient Temperature C° (F°)	-35 to +40 (-31 to +104)	-30 to +50 (-22 to +122)	-20 to +40 (-4 to +104)	-20 to +1100 (-4 to +2012)
Base Oil Type	Mineral	Mineral	Mineral	Mineral
Color	Dark Gray	Dark Gray	Dark Gray	Bronze
Cartridge (390 g / 14 oz)	452-5996	452-6001	452-6006	130-6951 (standard) 317-8491 (autolube)
Plastic Pail (5 kg / 11 lb)	—	—	—	133-8807
Plastic Pail (16 kg / 35 lb)	452-5999	452-6004	452-6009	—
Keg (55 kg / 120 lb)	452-5998	452-6003	452-6008	—
Drum (180 kg / 400 lb)	452-5997	452-6002	452-6007	—



PLANNED MAINTENANCE

Backhoe Loader		A									B						
		Engine Oil/Filter Change		Engine Air Filter		Fuel Filter Change		Cabin Air Filter Change		Transmission Filter Change	Axle Oil	Front Differential Oil Change		Front Final Drive Oil Change (each side)		Rear Differential Oil Change	
Sales Model	Serial Number Prefix	Filter Element	Oil Qty L (US Gal) DEO-ULS	Primary Element	Secondary Element	Primary Element	Secondary Element	Fresh Air Element	Recirculating Element	Filter Element	Oil Type	Oil Qty L (US Gal) TDTO	O-Ring	Oil Qty L (US Gal)	O-Ring	Oil Qty L (US Gal)	O-Ring
415	H8A	569-8036	9 (2.4)	528-0585	346-6688	540-5119	-	417-8134	211-2660	471-7003	MTO	11 (2.9)	9R-3176 (QTY 2)	0.7 (0.2)	9R-3176	16 (4.2)	122-7776 (QTY 2)
415 IL	H6L										MTO Front Axle TDTO Rear Axle						6V-6228 (QTY 2)
416	H8P										MTO						122-7776 (QTY 2)
420 / 420XE	H8T, H9X										MTO						122-7776 (QTY 2)
430	H8W	7W-2326	8.8 (2.3)	346-6687	479-4133	360-8960					TDTO		6V-6228 (QTY 2)	6V-6228	16.5 (4.4)	6V-622 (QTY 2)	
440	DC9, MZX																
450	KJH, DYN																

Backhoe Loader		B												
		Rear Differential Brake Additive		Rear Final Drive Oil Change (each side)		Hydraulic Filter Change			Transmission Oil Change					
Sales Model	Serial Number Prefix	Oil Qty L (US Gal)	Additive	Oil Qty L (US Gal)	O-Ring	Filter Element	Seal (Housing)	Seal (Plug)	Oil Qty L (US Gal) TDTO	Seal	Breather			
415	H8A	-	-	1.7 (0.45)	2M-9780	362-1163	526-0891	2M-9780	15 (3.9) manual	238-5080	9G-5127			
415 IL	H6L	0.5 (0.13)	197-0017		6V-6228									
416	H8P	-	-		2M-9780							19 (5) powershift 20 (5.3)	5P-6718 powershift / lock up	7T-3251 powershift / lock up
420 / 420XE	H8T, H9X	-	-		2M-9780							15 (3.9) manual 19 (5) 20 (5.3)	238-5080 manual 5P-6718	9G-5127 manual 7T-3251
430	H8W	0.5 (0.13)	197-0017	1.7 (0.45)	6V-6228	362-1163	526-0891	2M-9780	19 (5) powershift 20 (5.3)	5P-6718 powershift / lock up	7T-3251 powershift / lock up			
440	DC9, MZX													
450	KJH, DYN													

Backhoe Loader		C				D				E		F										
		Engine Crankcase Change	DEF Filter Change	Belt (Serpentine) Change		DEF Filter Change	Belt (Serpentine) Change		Hydraulic Oil Change		DEF Injector and Gasket Change		Cooling System Coolant (ELC) Change									
Sales Model	Serial Number Prefix	Breather Element	Filter Element	No A/C	With A/C	Filter Element	No A/C	With A/C	Oil Qty Hydo Advance L (US Gal)	Breather	Injector	Gasket	No A/C Quantity L (US Gal)	With A/C Quantity L (US Gal)								
415	H8A	-	-	-	-	-	515-2093	499-1749	41 (10.8)	9R-9925	529-7539	418-2073	14.5 (3.8)	16.5 (4.4)								
415 IL	H6L					378-3187		566-8499														
416	H8P					339-1048	495-1507	359-0191	185-1911						-	-	-	58.2 (15.4)	-	-	15.6 (4.2)	15.6 (4.2)
420 / 420XE	H8T, H9X																					
430	H8W																					
440	DC9, MZX																					
450	KJH, DYN																					

Parts Maintenance						
Machine Hours	500	A				
	1000	A	B			
	1500	A		C		
	2000	A	B			
	2500	A				
	3000	A	B	C	D	

Parts Maintenance						
Machine Hours	3500	A				
	4000	A	B			
	4500	A		C		
	5000	A	B			
	5500	A				
	6000	A	B	C	D	E

Parts Maintenance						
Machine Hours	6500	A				
	7000	A	B			
	7500	A		C		
	8000	A	B			
	8500	A				
	9000	A	B	C	D	

Parts Maintenance						
Machine Hours	9500	A				
	10000	A	B			
	10500	A		C		
	11000	A	B			
	11500	A				
	12000	A	B	C	D	E

COMMON GROUND ENGAGING TOOLS

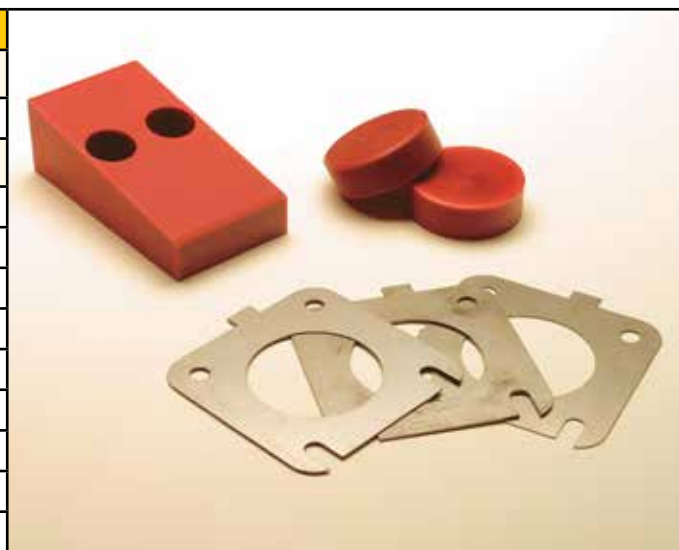
Loader		
Description (Width)	Qty	Part Number
Edge Group – Bolt-On (2262 mm)		
Cutting Edge	2	9W-8215
Hex Head Nut	8	4K-0367
Washer Hard	8	8T-4122
Plow Bolt	8	3F-5108
Edge Group – Bolt-On (2406 mm)		
Cutting Edge	2	118-7110
Hex Head Nut	8	4K-0367
Washer Hard	8	8T-4122
Plow Bolt	8	3F-5108
Edge Group – Bolt-On (2434 mm)		
Cutting Edge	2	220-4691
Hex Head Nut	8	4K-0367
Washer Hard	8	8T-4122
Plow Bolt	8	3F-5108
Edge Group – Bolt-On (2434 mm)		
Cutting Edge	2	9U-9665
Hex Head Nut	12	4K-0367
Plow Bolt	12	3F-5108
Cutting Edge MP (2262 mm)		
Cutting Edge MP (2406 mm)	1	233-3757
Cutting Edge MP (2434 mm)	1	515-9970
Cutting Edge MP (2434 mm)	1	517-1305
Tooth Group – Uni		
Unitooth Tip	8	135-8203
Hex Head Nut	16	4K-0367
Plow Bolt	16	4F-3657

Hoe	
Description	Part Number
Diagonal Retention System (DRS230)	
Retainer	201-1239
Pin – GET	500-0269
Diagonal Pin Adapter	
Adapter (25 mm for Rock Buckets)	201-1234
Adapter (20 mm)	201-1235
Adapter (25 mm for Soil Buckets)	253-0234
Tip	
Penetration	208-5235
Chisel	208-5232
Soil Digging	208-5234
Long	208-5236
Twin Sharp	208-5237
Sharp	208-5239
Wide	208-5240
Cutting Edge	
Cutting Edge (1200 mm)	311-6221
Cutting Edge (1500 mm)	311-9239
Cutting Edge (1800 mm)	556-3598



WEARPADS AND SHIMS

Location	Part Number
Stabilizer (Rock Guard Option)	
Pad	188-3953
Extendable Stick	
Pad (Side)	233-5169
Shim (0.25 mm)	293-9884
Shim (0.5 mm)	233-5166
Shim (1 mm)	293-9882
Shim (2 mm)	233-5167
Pad (Head - Wedge)	289-9426
Pad (Nose - Wedge)	217-1577
Shim (1 mm)	287-5667
Pad (Top)	226-9764



BATTERY

Backhoe Loader		Battery	Part Number
Sales Model	Serial Number Prefix		
415 / 415 IL	H8A / H6L	Standard	230-6368
416	H8P		
420 / 420XE	H8T, H9X		
430	H8W	Standard	115-2422
440	DC9, MZX		
450	KJH, DYN		



ENGINE PARTS

Backhoe Loader		Part Number / Reman										
Sales Model	Serial Number Prefix	Engine	Long Block	Alternator	Fuel Injector	Fuel Injection Pump	Water Pump	Starting Motor		Turbo-charger		
415 / 415 IL	H8A / H6L	541-2850	-	515-4364	553-8167	553-8165	542-1071	321-8965	20R-4255	572-6424		
416	H8P	541-2952										
420 / 420XE	H8T, H9X											
430	H8W	436-5178	20R-7185	321-8927	20R-3601	418-3229	370-8363	20R-4783	397-5683	331-7010	20R-4762	450-1871
440	DC9, MZX											
450	KJH, DYN											



MIRRORS, LIGHTS AND FUSES

Mirrors		Part Number
Rearview	External	180-0448
Bracket	Right	382-2497
Bracket	Left	382-2498
Rearview	Internal	472-9218

Lights	Lamp Type	Part Number
Flood Lamp (Front and Rear) Long Range	Halogen Light	214-2969
Flood Lamp (Front and Rear) Wide Range	Halogen Bulb	9W-0607
	Halogen Light	214-2968
Flood Lamp LED (Front and Rear) Wide Range	Halogen Bulb	9W-0607
	Lamp Assembly	479-8445

Fuses	Part Number
3 Amp Mini	395-9584
10 Amp	9W-1442
10 Amp Mini	113-8490
15 Amp	9W-1441
15 Amp Mini	113-8491
20 Amp	9W-1446
25 Amp	1Q-1905
30 Amp	192-7727
40 Amp	232-6313
50 Amp	418-0363

Lamp Signal (Stop, Tail and Turn) (Rear)	Lamp Assembly	336-9096
	Halogen Bulb (Stop)	7S-1800
	Halogen Bulb (Signal)	9W-3326
Lamp Signal (Stop, Tail and Turn) LED (Rear)	Lens	352-4645
	Lamp Assembly	387-6627
Lamp Signal (Turn) (Front)	Lamp Assembly	449-3759
Dome Lamp	Lamp Assembly	426-0976
Dome Lamp LED	Lamp Assembly	431-9515
Lamp 12V (Dome)	Lamp	210-8754
Beacon (Warning) Strobe Light	Roof Mounted	140-3668
	Roof Mounted	180-3664
Beacon (Rotating Warning)	Halogen Bulb	9X-8118
	Roof Mounted	309-1325
Beacon (Rotating Warning)	Halogen Bulb	9X-8118


CAB GLASS

Position	Part Number	Sales Model	Serial Number Prefix
Windscreen (Top)	382-2342	All	All
Windscreen (Bottom Right Door)	382-2344		
Windscreen (Bottom Left Door)	382-2343		
Left Door (Top)	382-2261		
Left Door (Bottom)	382-2263		
Right Door (Top)	382-2274		
Right Door (Bottom)	382-2269		
Left Rear (Top)	382-2249		
Left Rear (Bottom)	382-2310		
Right Rear (Top)	382-2250		
Right Rear (Bottom)	382-2311		
Rear Glass (Top Section)	438-6984		
Rear Glass (Top Section)	564-7654	440 450	DC9251-UP KJH191-UP
Rear Glass (Bottom Section)	441-4184	440 450	DC9 KJH
Rear Glass (Top Section)	579-4824	415 416 420/420XE	H8A H8P H8T, H9X
Rear Glass (Bottom Section)	545-6550	430 440 450	H8W MZX DYN

QUICK DISCONNECTS

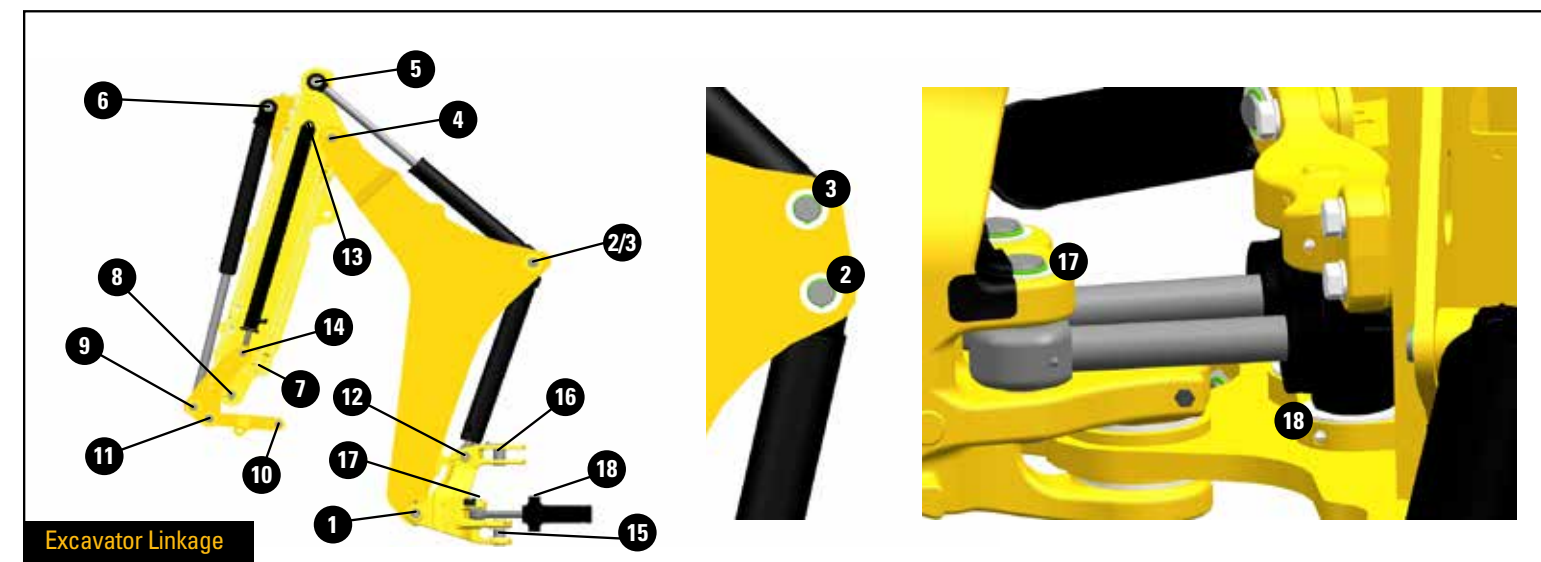
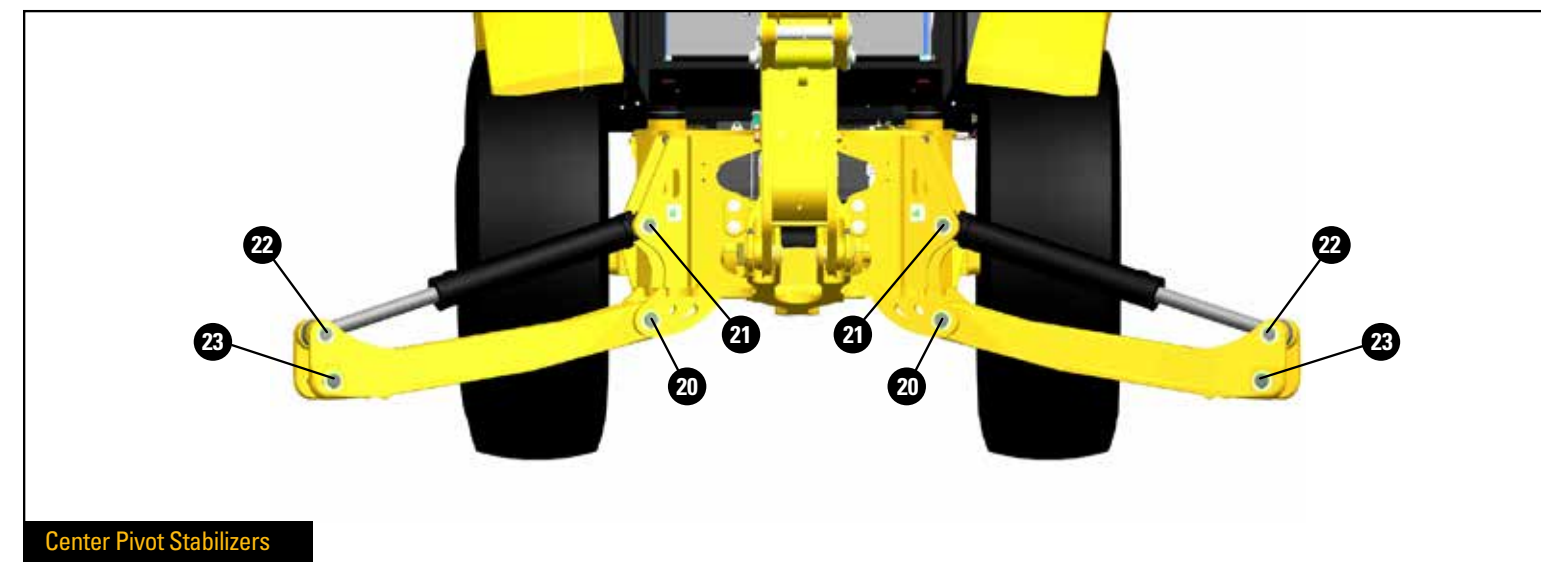
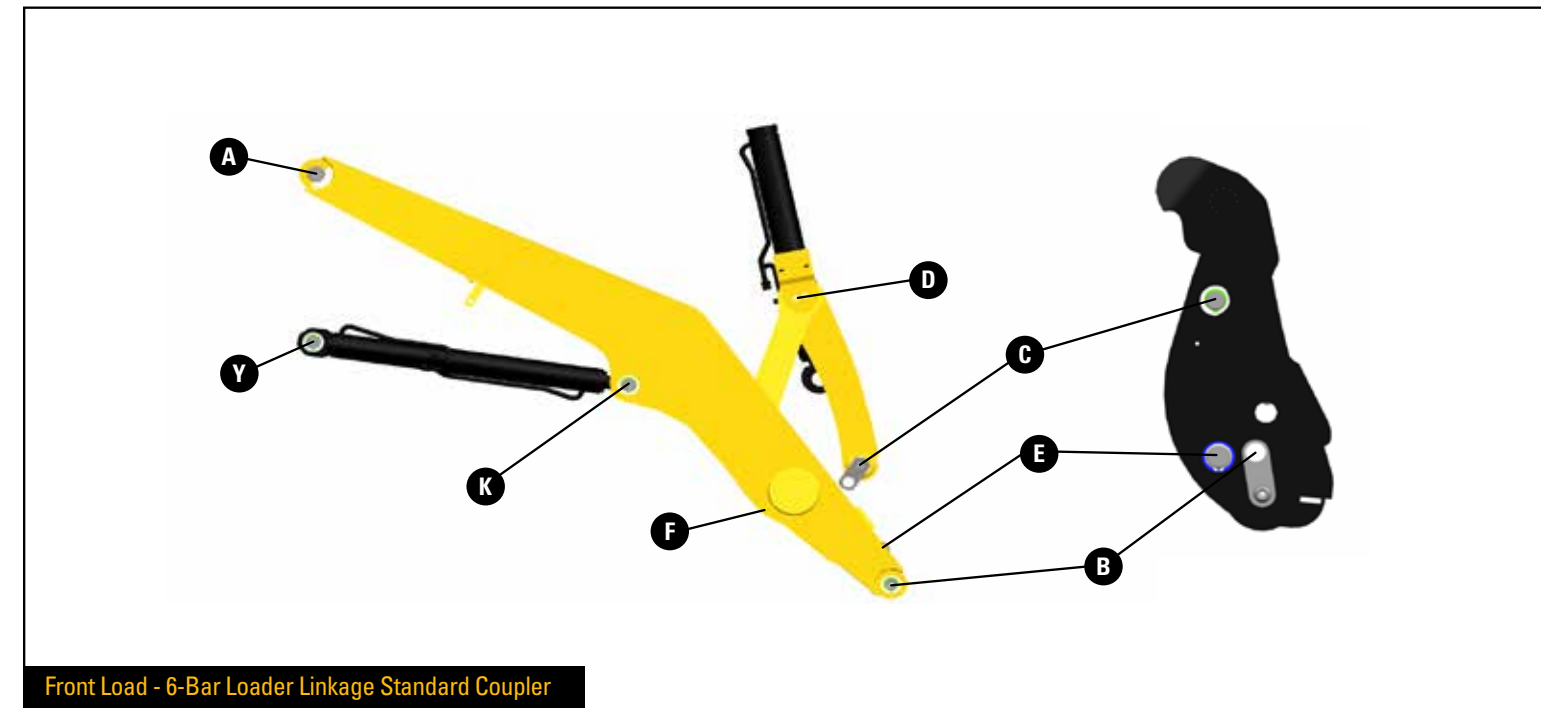
Get the most out of your Cat Backhoe Loader with a wide range of hydraulic work tool attachments that can be easily interchanged with Quick Disconnects. Contact your Cat dealer for a complete list of all available attachments.

Function	Twist to connect – Connect under pressure			
	Male	Cap	Female	Cap
Loader	439-1589	471-1018	439-1588	471-1017
Hoe	439-1591		439-1590	



LINKAGE PIN AND BEARING PART NUMBERS

See part numbers on following pages



FRONT LOAD – 6-BAR LOADER LINKAGE STANDARD COUPLER

Linkage Pins										
Sales Model	Serial Number Prefix	A	B Coupling	C Coupling	D	E Coupling	F	K	Y	
415 / 415 IL	H8A / H6L	341-6152 Pin	542-7723 Pin Assembly (QTY 2)	544-1534 Pin	361-0415 Trunnion	544-1533 Pin	360-2822 Pin	362-3269 Pin (Right) 362-3270 Pin (Left)	360-2816 Pin (QTY 2)	
416	H8P									
420 / 420XE	H8T, H9X									
430	H8W									
440	DC9, MZX	509-7910 Pin	509-7911 Pin Assembly (QTY 2)	509-7914 Pin	506-6676 Trunnion	509-7916 Pin	509-7917 Pin Assembly (QTY 2)	509-7920 Pin (Right) 509-7919 Pin (Left)	509-7921 Pin (QTY 2)	
450	KJH, DYN									
Bearings										
Sales Model	Serial Number Prefix	A	B Arm	C Arm	D	E Arm	K	Y		
415 / 415 IL	H8A, H6L	-	9R-0411 Bushing (QTY 4)	9R-5828 Bushing (QTY 2)	531-3531 Bearing (QTY 4) 362-5025 Bushing (QTY 2)	362-5027 Bushing (QTY 2)	362-5024 Bushing (QTY 2)	362-5024 Bushing (QTY 2)		
416	H8P									
420 / 420XE	H8T, H9X									
430	H8W									
440	DC9, MZX	545-9439 Bearing (QTY 2)	507-9115 Bearing (QTY 4)	509-3000 Bearing (QTY 2)	491-8297 Bearing (QTY 4) 9T-3165 Bearing (QTY 2)	506-8305 Bearing	506-8304 Bearing (QTY 2)	543-4617 Bearing (QTY 2)		
450	KJH, DYN									
Seals and Grease Fittings										
Sales Model	Serial Number Prefix	B Coupling								
415 / 415 IL	H8A, H6L	3B-8489 Grease Fitting (QTY 2)								
416	H8P									
420 / 420XE	H8T, H9X									
430	H8W									
440	DC9, MZX									
450	KJH, DYN									
Retention Hardware										
Sales Model	Serial Number Prefix	A	B Coupling	C Arm	C Coupling	D	E Coupling	F	K	Y
415 / 415 IL	H8A, H6L	372-5024 Plate (QTY 2) 8T-4139 Bolt (QTY 4) 8T-4223 Washer (QTY 4) 128-7903 Spacer 128-7905 Spacer (QTY 3)	7X-0590 Washer (QTY 2) 8T-4956 Bolt (QTY 2) 363-2855 Shim (QTY 8) 363-2856 Shim (QTY 6)	-	545-5122 Washer (QTY 2) 545-5123 Shim (QTY 3) 6V-8344 Retaining Ring (QTY 2)	358-1472 Spacer (QTY 2) 101-0117 Plate 362-1201 Plate 8T-4121 Washer (QTY 4) 8T-4137 Bolt (QTY 4)	111-4337 Washer (QTY 6) 6V-3213 Retaining Ring (QTY 2) 9R-0158 Washer (QTY 4) 231-7499 Washer (QTY 4) 361-7826 Tube	111-4337 Washer (QTY 5) 6V-3213 Retaining Ring (QTY 2) 9R-0158 Washer (QTY 2)	373-8390 Shim (QTY 6) 7X-0542 Washer (QTY 7) 6V-4364 Retaining Ring (QTY 4)	6V-7744 Lock Nut (QTY 2) 105-3479 Bolt (QTY 2) 373-8390 Shim (QTY 4) 6V-4364 Retaining Ring (QTY 2) 7X-0542 Washer (QTY 6)
416	H8P									
420 / 420XE	H8T, H9X									
430	H8W									
440	DC9, MZX	7X-0510 Washer (QTY 4) 285-6125 Bolt (QTY 4) 222-7100 Washer (QTY 3) 222-7101 Washer (QTY 2) 510-3585 Plate (QTY 2)	7X-0590 Washer (QTY 2) 8T-4956 Bolt (QTY 2) 383-1328 Shim (QTY 2) 383-1329 Shim (QTY 2)	491-8296 Spacer 383-1329 Shim (QTY 3)	6V-4364 Retaining Ring (QTY 2) 9R-1510 Washer (QTY 4) 9R-5438 Washer (QTY 3) 383-1329 Shim (QTY 2)	8T-4139 Bolt (QTY 6) 8T-4223 Washer (QTY 6) 9R-3042 Plate (QTY 2) 358-1472 Spacer (QTY 4)	6V-8344 Retaining Ring (QTY 2) 9R-1502 Washer (QTY 4) 9R-5437 Washer (QTY 3)	3B-5319 Cotter Pin 373-8390 Shim (QTY 2) 7X-0590 Washer 8T-4956 Bolt	6V-8344 Retaining Ring (QTY 4) 9R-5238 Spacer (QTY 7) 210-1707 Shim (QTY 6)	6V-7744 Lock Nut (QTY 2) 101-7400 Bolt (QTY 2) 9R-4066 Washer (QTY 4) 9R-8390 Spacer (QTY 12) 127-8987 Retaining Ring (QTY 2)
450	KJH, DYN									

CENTER PIVOT STABILIZERS

Linkage Pins					
Sales Model	Serial Number Prefix	20	21	22	23
415 / 415 IL	H8A, H6L	374-7900 Pin (QTY 2)	376-7520 Pin (QTY 2)	380-9478 Pin (QTY 2)	238-9546 Shaft (QTY 2)
416	H8P				
420 / 420XE	H8T, H9X				
430	H8W				
440	DC9, MZX	505-6376 Pin (QTY 2)	505-6702 Pin (QTY 2)	507-8331 Pin (QTY 2)	132-3947 Pin (QTY 2)
450	KJH, DYN				
Bearings					
Sales Model	Serial Number Prefix	20	21	22	
415 / 415 IL	H8A, H6L	9R-0411 Bushing (QTY 4)	9R-0321 Bushing (QTY 4)	9R-0321 Bushing (QTY 4)	
416	H8P				
420 / 420 XE	H8T, H9X				
430	H8W				
440	DC9, MZX	507-9119 Bearing (QTY 4)	507-9117 Bearing (QTY 4)	506-8310 Bearing (QTY 2)	
450	KJH, DYN				
Retention Hardware					
Sales Model	Serial Number Prefix	20	21	22	23
415 / 415 IL	H8A, H6L	111-4337 Washer (QTY 2) 6V-3213 Retaining Ring (QTY 4) 9R-0158 Washer (QTY 12)	119-4594 Washer (QTY 2) 6V-8144 Retaining Ring (QTY 4) 9R-0109 Washer (QTY 8)	6V-8144 Retaining Ring (QTY 4) 9R-0109 Washer (QTY 8)	6V-3213 Retaining Ring (QTY 4) 9R-0158 Washer (QTY 14)
416	H8P				
420 / 420XE	H8T, H9X				
430	H8W				
440	DC9, MZX	9R-4066 Washer (QTY 4) 095-0928 Retaining Ring (QTY 4) 137-6812 Washer (QTY 4)	6V-8344 Retaining Ring (QTY 4) 9R-1502 Washer (QTY 4)	95-0928 Retaining Ring (QTY 4) 9R-4066 Washer (QTY 4) 9R-8390 Spacer (QTY 4) 137-6812 Washer (QTY 4)	3B-5322 Cotter Pin (QTY 4) 9R-1510 Washer (QTY 12) 373-8390 Shim (QTY 10)
450	KJH, DYN				

EXCAVATOR LINKAGE

Linkage Pins																																				
Sales Model	Serial Number Prefix	Stick Type Standard Stick: Areas 4,5,6,7 Extendable Stick: Areas 4,5,6,7,13 and 14	Linkage Type (Areas 7,8,9,10 and 11)	1	2	3	4	5	6	7	8	9	10	11	12	13	14	15	16	17	18															
415	H8A	Standard	Fabricated	237-5330 Pin (QTY 2)	445-5660 Pin	-	473-0239 Pin Assembly	213-6714 Pin	213-6696 Pin	213-6697 Pin	154-5280 Pin	154-5278 Pin	154-5279 Pin	213-6698 Pin	209-6850 Pin Assembly	-	-	341-9483 Pin	341-9484 Pin Assembly	341-9488 Pin (QTY 2)	381-8085 Cylinder Assembly 381-8086 Cylinder Assembly															
		Extendable							220-1019 Pin	220-1018 Pin						214-6143 Pin	220-1018 Pin																			
416	H8P	Standard							213-6696 Pin	213-6697 Pin						-	473-0238 Pin Assembly					213-6695 Pin	213-6696 Pin	213-6697 Pin	154-5280 Pin	154-5278 Pin	154-5279 Pin	213-6698 Pin	209-6850 Pin Assembly	-	-	341-9483 Pin	341-9484 Pin Assembly	341-9488 Pin (QTY 2)	381-8085 Cylinder Assembly 381-8086 Cylinder Assembly	
		Extendable							220-1019 Pin	220-1018 Pin													214-6143 Pin	220-1018 Pin												
420 / 420 XE	H8T, H9X	Standard							-	426-0422 Pin						-	473-0238 Pin Assembly					213-6695 Pin	213-6696 Pin	213-6697 Pin	154-5280 Pin	154-5278 Pin	154-5279 Pin	213-6698 Pin	209-6850 Pin Assembly	-	-	341-9483 Pin	341-9484 Pin Assembly	341-9488 Pin (QTY 2)	381-8085 Cylinder Assembly 381-8086 Cylinder Assembly	
		Extendable																					220-1019 Pin	220-1018 Pin						214-6143 Pin	220-1018 Pin					
430	H8W	Standard							-	130-2533 Pin (QTY 2)						213-6717 Pin	-					213-6728 Pin Assembly	213-6718 Pin	213-6696 Pin	213-6697 Pin	154-5280 Pin	154-5278 Pin	154-5279 Pin	213-6698 Pin	213-6709 Pin Assembly	-	-	341-9483 Pin	341-9484 Pin Assembly	341-9488 Pin (QTY 2)	381-8085 Cylinder Assembly 381-8086 Cylinder Assembly
		Extendable																						220-1019 Pin	220-1018 Pin						214-6143 Pin	220-1018 Pin				
440	DC9, MZX	Standard							-	504-6535 Pin Assembly (QTY 2)						505-3818 Pin	505-3818 Pin					506-5304 Pin Assembly	509-5549 Pin	509-5550 Pin	213-6697 Pin	154-5280 Pin	154-5278 Pin	154-5279 Pin	213-6698 Pin	504-6536 Pin Assembly	-	-	504-9662 Pin	504-9661 Pin Assembly	504-9663 Pin (QTY 2)	501-9800 Cylinder Assembly 501-9801 Cylinder Assembly
		Extendable																						509-5551 Pin	220-1018 Pin						214-6143 Pin	220-1018 Pin				
450	KJH, DYN	Standard	-	504-6535 Pin Assembly (QTY 2)	505-3817 Pin	505-3817 Pin	506-5303 Pin Assembly	509-5552 Pin	509-5553 Pin	270-7865 Pin	154-5280 Pin	154-5278 Pin	154-5279 Pin	213-6698 Pin	504-6536 Pin Assembly	-	-	504-9662 Pin	504-9661 Pin Assembly	504-9663 Pin (QTY 2)	507-7481 Cylinder Assembly 507-7482 Cylinder Assembly															
		Extendable							509-5553 Pin	270-7865 Pin						214-6143 Pin	270-7865 Pin																			

EXCAVATOR LINKAGE

Bearings																																																																																																
Sales Model	Serial Number Prefix	Stick Type Standard Stick: Areas 4,5,6,7 Extendable Stick: Areas 4,5,6,7,13 and 14	Linkage Type (Areas 7,8,9,10 and 11)	1	2	3	4	5	6	7	8	9	10	11	12	15	16	17	18																																																																													
415	H8A	Standard	Fabricated							9R-0162 Bushing (QTY 2) 213-6687 Bushing (QTY 2)																																																																																						
		Extendable								286-7166 Bushing (QTY 2) 213-6687 Bushing (QTY 2)																																																																																						
416	H8P	Standard								209-6181 Bushing (QTY 2) 237-0944 Bushing (QTY 2) 278-5454 Bushing (QTY 2)										214-3855 Bearing (QTY 2)	214-2255 Bushing (QTY 2)	9R-0170 Bushing (QTY 2)	9R-3092 Bushing (QTY 2)	9R-0139 Bushing (QTY 2)	9R-0162 Bushing (QTY 2) 213-6687 Bushing (QTY 2)																																																																							
		Extendable								286-7166 Bushing (QTY 2) 213-6687 Bushing (QTY 2)																																																																																						
420 / 420 XE	H8T, H9X	Standard																																		9R-0162 Bushing (QTY 2) 213-6687 Bushing (QTY 2)																																																												
		Extendable																																		286-7166 Bushing (QTY 2) 213-6687 Bushing (QTY 2)																																																												
430	H8W	Standard																																		217-1460 Bushing (QTY 2) 236-8158 Bushing (QTY 2) 278-5455 Bushing (QTY 2)											212-8960 Bearing (QTY 2)	215-1906 Bushing (QTY 2)	213-6683 Bushing (QTY 2)	213-6682 Bushing (QTY 2)	9R-0139 Bushing (QTY 2)	9R-0162 Bushing (QTY 2) 213-6687 Bushing (QTY 2)																																												
		Extendable																																		286-7166 Bushing (QTY 2) 213-6687 Bushing (QTY 2)																																																												
440	DC9, MZX	Standard																																		217-1460 Bushing (QTY 2) 236-8158 Bushing (QTY 2) 278-5455 Bushing (QTY 2)											220-1013 Bearing (QTY 2) 250-1563 Bearing (QTY 2)	217-6046 Bushing (QTY 2)	213-6715 Bushing (QTY 2)	213-6719 Bushing (QTY 2)	9R-0139 Bushing (QTY 2)	9R-0162 Bushing (QTY 2) 213-6687 Bushing (QTY 2)																																												
		Extendable																																		286-7166 Bushing (QTY 2) 213-6687 Bushing (QTY 2)																																																												
450	KJH, DYN	Standard																																		500-2910 Bearing (QTY 2) 507-2992 Bearing (QTY 2)											507-2991 Bearing (QTY 2)	507-2991 Bearing (QTY 2)	507-2994 Bearing (QTY 2)	506-8311 Bearing	506-8306 Bearing	9R-0162 Bushing (QTY 2) 213-6687 Bushing (QTY 2)																																												
		Extendable																																		286-7166 Bushing (QTY 2) 213-6687 Bushing (QTY 2)																																																												
450	KJH, DYN	Standard																																		500-2910 Bearing (QTY 2) 507-2992 Bearing (QTY 2) 517-6017 Bearing (QTY 2)											507-2995 Bearing (QTY 2)	507-2995 Bearing (QTY 2)	507-2996 Bearing (QTY 2)	506-8312 Bearing	506-8309 Bearing	9R-0162 Bushing (QTY 2) 9R-3092 Bushing (QTY 2)																																												
		Extendable																																		286-7166 Bushing (QTY 2) 9R-3092 Bushing (QTY 2)																																																												

EXCAVATOR LINKAGE

Seals and Grease Fittings							
Sales Model	Serial Number Prefix	1	2	3	7	15	16
415	H8A	3B-8489 Grease Fitting (QTY 2)	6V-9746 Seal	6V-8398 Seal	3B-8489 Grease Fitting (QTY 2)	3B-8489 Grease Fitting	3B-8489 Grease Fitting
416	H8P						
420 / 420XE	H8T, H9X						
430	H8W						
440	DC9, MZX						
450	KJH, DYN						

EXCAVATOR LINKAGE

Retention Hardware																																	
Sales Model	Serial Number Prefix	Stick Type Standard Stick: Areas 4,5,6,7 Extendable Stick: Areas 4,5,6,7,13 and 14	Linkage Type (Areas 7,8,9, 10 and 11)	1	2	3	4	5	6	7	8	9	10	11	12	13	15	16	17	18													
415	H8A	Standard	Fabricated	6V-7687 Lock Nut (QTY 2) 8T-7930 Bolt (QTY 2)	176-0626 Washer (QTY 4) 375-1442 Retaining Ring (QTY 2)	-	286-3086 Spacer (QTY 3) 473-0240 Plate (QTY 2) 8T-4192 Bolt 8T-4895 Washer	6V-4364 Retaining Ring (QTY 2) 9R-1510 Washer (QTY 4)	6V-8344 Retaining Ring (QTY 2) 9R-1502 Washer (QTY 6)	6V-4364 Retaining Ring (QTY 2) 9R-1510 Washer (QTY 4) 220-7108 Washer (QTY 2)	9R-1510 Washer (QTY 5) 3B-5319 Cotter Pin (QTY 2) 220-7108 Washer (QTY 2)	6V-4364 Retaining Ring (QTY 2) 9R-1510 Washer (QTY 6)	9R-0158 Washer (QTY 7) 3B-5319 Cotter Pin (QTY 2) 111-4337 Washer (QTY 4)	6V-8344 Retaining Ring (QTY 2) 9R-1502 Washer (QTY 6) 210-1707 Shim (QTY 2)	8T-4139 Bolt 8T-4821 Washer 9R-7882 Spacer	-	6V-7687 Lock Nut 8T-7930 Bolt 280-7732 Washer (QTY 2)	-	6V-4364 Retaining Ring (QTY 4) 7X-0542 Washer (QTY 2) 465-3495 Guard	-													
		Extendable							6V-8344 Retaining Ring (QTY 2) 9R-5238 Spacer (QTY 6)	6V-4364 Retaining Ring (QTY 2) 9R-1510 Washer (QTY 3) 220-7108 Washer (QTY 2)		6V-4364 Retaining Ring (QTY 2) 9R-1510 Washer (QTY 6)				9R-1510 Washer (QTY 4)																	
416	H8P	Standard							6V-8344 Retaining Ring (QTY 2) 9R-1502 Washer (QTY 6)	6V-4364 Retaining Ring (QTY 2) 9R-1510 Washer (QTY 4) 220-7108 Washer (QTY 2)		6V-4364 Retaining Ring (QTY 2) 9R-1510 Washer (QTY 6)				220-7108 Washer (QTY 2)					1L-3768 Retaining Ring (QTY 2) 111-9251 Washer (QTY 2) 233-5169 Pad (QTY 4) 233-5166 Shim (QTY 16) 233-5167 Shim (QTY 4) 293-9882 Shim (QTY 8) 293-9884 Shim (QTY 8)	6V-7687 Lock Nut 8T-7930 Bolt 280-7732 Washer (QTY 2)	-	6V-4364 Retaining Ring (QTY 4) 7X-0542 Washer (QTY 2) 465-3495 Guard									
		Extendable							6V-8344 Retaining Ring (QTY 2) 9R-5238 Spacer (QTY 6)	6V-4364 Retaining Ring (QTY 2) 9R-1510 Washer (QTY 3) 220-7108 Washer (QTY 2)		6V-4364 Retaining Ring (QTY 2) 9R-1510 Washer (QTY 6)				1L-3768 Retaining Ring (QTY 2) 111-9251 Washer (QTY 2) 233-5169 Pad (QTY 4) 233-5166 Shim (QTY 16) 233-5167 Shim (QTY 4) 293-9882 Shim (QTY 8) 293-9884 Shim (QTY 8)																	
420 / 420 XE	H8T, H9X	Standard							9R-0481 Washer (QTY 4) 095-7950 Retaining Ring (QTY 2)	9R-8292 Spacer (QTY 3) 473-0240 Plate (QTY 2) 8T-4192 Bolt 8T-4895 Washer		375-1442 Retaining Ring (QTY 2) 215-9690 Washer (QTY 4)				6V-8344 Retaining Ring (QTY 2) 9R-1502 Washer (QTY 2)					6V-4364 Retaining Ring (QTY 2) 9R-1510 Washer (QTY 4) 220-7108 Washer (QTY 2)	9R-1510 Washer (QTY 5) 3B-5319 Cotter Pin (QTY 2) 220-7108 Washer (QTY 2)	6V-8344 Retaining Ring (QTY 2) 9R-5238 Spacer (QTY 6)	6V-4364 Retaining Ring (QTY 2) 9R-1510 Washer (QTY 3) 220-7108 Washer (QTY 2)	6V-4364 Retaining Ring (QTY 2) 9R-1510 Washer (QTY 6)	9R-0158 Washer (QTY 7) 3B-5319 Cotter Pin (QTY 2) 111-4337 Washer (QTY 4)	6V-8344 Retaining Ring (QTY 2) 9R-1502 Washer (QTY 6) 210-1707 Shim (QTY 2)	8T-4139 Bolt 8T-4821 Washer 9R-7882 Spacer	-	6V-7687 Lock Nut 8T-7930 Bolt 280-7732 Washer (QTY 2)	-	6V-4364 Retaining Ring (QTY 4) 7X-0542 Washer (QTY 2) 465-3495 Guard	
		Extendable							9R-0481 Washer (QTY 4) 095-7950 Retaining Ring (QTY 2)	9R-8292 Spacer (QTY 3) 473-0240 Plate (QTY 2) 8T-4192 Bolt 8T-4895 Washer		375-1442 Retaining Ring (QTY 2) 215-9690 Washer (QTY 5)				6V-8344 Retaining Ring (QTY 2) 9R-5238 Spacer (QTY 6)					6V-4364 Retaining Ring (QTY 2) 9R-1510 Washer (QTY 3) 220-7108 Washer (QTY 2)		6V-4364 Retaining Ring (QTY 2) 9R-1510 Washer (QTY 6)	1L-3768 Retaining Ring (QTY 2) 111-9251 Washer (QTY 2) 233-5169 Pad (QTY 4) 233-5166 Shim (QTY 16) 233-5167 Shim (QTY 4) 293-9882 Shim (QTY 8) 293-9884 Shim (QTY 8)									
430	H8W	Standard							254-7211 Plate (QTY 4) 8C-3114 Retaining Ring (QTY 2)	286-3088 Spacer (QTY 3)		095-7950 Retaining Ring (QTY 2) 9R-0481 Washer (QTY 4)				6V-8344 Retaining Ring (QTY 2) 9R-1502 Washer (QTY 4)					6V-4364 Retaining Ring (QTY 2) 9R-1510 Washer (QTY 4) 220-7108 Washer (QTY 2)	9R-1510 Washer (QTY 5) 3B-5319 Cotter Pin (QTY 2) 220-7108 Washer (QTY 2)	6V-8344 Retaining Ring (QTY 2) 9R-5238 Spacer (QTY 6)	6V-4364 Retaining Ring (QTY 2) 9R-1510 Washer (QTY 3) 220-7108 Washer (QTY 2)	6V-4364 Retaining Ring (QTY 2) 9R-1510 Washer (QTY 6)	9R-0158 Washer (QTY 7) 3B-5319 Cotter Pin (QTY 2) 111-4337 Washer (QTY 4)	6V-8344 Retaining Ring (QTY 2) 9R-1502 Washer (QTY 6) 210-1707 Shim (QTY 2)	8T-4139 Bolt 8T-4821 Washer 9R-7882 Spacer	-	6V-7687 Lock Nut 8T-7930 Bolt 280-7732 Washer (QTY 2)	-	6V-4364 Retaining Ring (QTY 4) 7X-0542 Washer (QTY 2) 465-3495 Guard	
		Extendable							254-7211 Plate (QTY 4) 8C-3114 Retaining Ring (QTY 2)	286-3088 Spacer (QTY 3)		095-7950 Retaining Ring (QTY 2) 9R-0481 Washer (QTY 4)				6V-8344 Retaining Ring (QTY 2) 9R-5238 Spacer (QTY 6)					6V-4364 Retaining Ring (QTY 2) 9R-1510 Washer (QTY 3) 220-7108 Washer (QTY 2)		6V-4364 Retaining Ring (QTY 2) 9R-1510 Washer (QTY 6)	1L-3768 Retaining Ring (QTY 2) 111-9251 Washer (QTY 2) 233-5169 Pad (QTY 4) 233-5166 Shim (QTY 16) 233-5167 Shim (QTY 4) 293-9882 Shim (QTY 8) 293-9884 Shim (QTY 8)									
440	DC9, MZX	Standard							176-0626 Washer (QTY 4) 095-0929 Retaining Ring (QTY 2) 546-0927 Shim	176-0626 Washer (QTY 4) 095-0929 Retaining Ring (QTY 2) 546-0927 Shim		8T-4192 Bolt 8T-4895 Washer 9R-8291 Spacer (QTY 3)				6V-8344 Retaining Ring (QTY 2) 9R-1502 Washer (QTY 4)					6V-4364 Retaining Ring (QTY 2) 9R-1510 Washer (QTY 4) 220-7108 Washer (QTY 2)	9R-1510 Washer (QTY 5) 3B-5319 Cotter Pin (QTY 2) 220-7108 Washer (QTY 2)	6V-8344 Retaining Ring (QTY 2) 9R-5238 Spacer (QTY 6)	6V-4364 Retaining Ring (QTY 2) 9R-1510 Washer (QTY 3) 220-7108 Washer (QTY 2)	6V-4364 Retaining Ring (QTY 2) 9R-1510 Washer (QTY 4)	9R-0158 Washer (QTY 7) 3B-5319 Cotter Pin (QTY 2) 111-4337 Washer (QTY 4)	6V-8344 Retaining Ring (QTY 2) 9R-1502 Washer (QTY 6) 210-1707 Shim (QTY 2)	8T-4139 Bolt 8T-4821 Washer 9R-7882 Spacer	6V-4364 Retaining Ring (QTY 2) 547-5129 Spacer 8T-4184 Bolt	6V-7687 Lock Nut 8T-7930 Bolt 280-7732 Washer (QTY 2)	-	6V-4364 Retaining Ring (QTY 4) 7X-0542 Washer (QTY 2) 465-3495 Guard	
		Extendable							176-0626 Washer (QTY 4) 095-0929 Retaining Ring (QTY 2) 546-0927 Shim	176-0626 Washer (QTY 4) 095-0929 Retaining Ring (QTY 2) 546-0927 Shim		8T-4192 Bolt 8T-4895 Washer 9R-8291 Spacer (QTY 3)				6V-8344 Retaining Ring (QTY 2) 9R-5238 Spacer (QTY 6)					6V-4364 Retaining Ring (QTY 2) 9R-1510 Washer (QTY 3) 220-7108 Washer (QTY 2)		6V-4364 Retaining Ring (QTY 2) 9R-1510 Washer (QTY 4)	6V-4364 Retaining Ring (QTY 2) 547-5129 Spacer 8T-4184 Bolt 8T-4821 Washer	525-5176 Washer (QTY 2) 8T-4223 Washer (QTY 2) 329-3356 Nut 8T-7929 Bolt								
450	KJH, DYN	Standard							5R-5927 Washer (QTY 2) 8T-4192 Bolt (QTY 2) 468-8223 Shim (QTY 2)	9R-0481 Washer (QTY 4) 095-7950 Retaining Ring (QTY 2) 546-0927 Shim (QTY 2)		9R-0481 Washer (QTY 4) 095-7950 Retaining Ring (QTY 2) 546-0927 Shim (QTY 2)				8T-4192 Bolt 8T-4895 Washer					254-7211 Plate (QTY 4) 8C-3114 Retaining Ring (QTY 2)	095-0928 Retaining Ring (QTY 2) 9R-4066 Washer (QTY 4)	6V-4364 Retaining Ring (QTY 2) 9R-1510 Washer (QTY 4) 220-7108 Washer (QTY 2)	9R-1510 Washer (QTY 5) 3B-5319 Cotter Pin (QTY 2) 220-7108 Washer (QTY 2)	8T-5412 Bolt 329-3356 Nut (QTY 2) 9R-4066 Washer (QTY 4)	9R-4066 Washer (QTY 3) 095-0928 Retaining Ring (QTY 2)	9R-0158 Washer (QTY 7) 3B-5319 Cotter Pin (QTY 2) 111-4337 Washer (QTY 4)	6V-8344 Retaining Ring (QTY 2) 9R-1502 Washer (QTY 6) 210-1707 Shim (QTY 2)	8T-4139 Bolt 8T-4821 Washer 9R-7882 Spacer	6V-4364 Retaining Ring (QTY 2) 547-5129 Spacer 8T-4184 Bolt	6V-7687 Lock Nut 8T-7930 Bolt 280-7732 Washer (QTY 2)	-	6V-4364 Retaining Ring (QTY 4) 7X-0542 Washer (QTY 2) 465-3495 Guard
		Extendable							5R-5927 Washer (QTY 2) 8T-4192 Bolt (QTY 2) 468-8223 Shim (QTY 2)	9R-0481 Washer (QTY 4) 095-7950 Retaining Ring (QTY 2) 546-0927 Shim (QTY 2)		9R-0481 Washer (QTY 4) 095-7950 Retaining Ring (QTY 2) 546-0927 Shim (QTY 2)				8T-4192 Bolt 8T-4895 Washer					254-7211 Plate (QTY 4) 8C-3114 Retaining Ring (QTY 2)	095-0928 Retaining Ring (QTY 2) 9R-4066 Washer (QTY 4)	6V-4364 Retaining Ring (QTY 2) 9R-1510 Washer (QTY 4) 220-7108 Washer (QTY 2)		8T-5412 Bolt 329-3356 Nut (QTY 2) 9R-4066 Washer (QTY 4)	9R-4066 Washer (QTY 3) 095-0928 Retaining Ring (QTY 2)				6V-4364 Retaining Ring (QTY 2) 547-5129 Spacer 8T-4184 Bolt 8T-4821 Washer			

LET'S DO THE WORK.™

PEDJ0782-01
(North America)

November 2021

© 2021 Caterpillar. All Rights Reserved. CAT, CATERPILLAR, LET'S DO THE WORK, their respective logos, "Caterpillar Corporate Yellow," the "Power Edge" and Cat "Modern Hex" trade dress, as well as corporate and product identity used herein, are trademarks of Caterpillar and may not be used without permission.

