

D7

TRACK-TYPE TRACTOR



Net Power

ISO 9249/SAE J1349

197 kW (265 hp)

ISO 9249/SAE J1349 (DIN)

268 mhp

Operating Weight (Standard SU/U)

29 776 kg (65,644 lb)

Cat® C9.3B Engine meets UN ECE R96 Stage IIIA emission standards, equivalent to U.S. EPA Tier 3/EU Stage IIIA.



The new Cat® D7 joins the growing family of Next Generation dozers, delivering more productivity and high drive undercarriage value. A fully automatic 4-speed transmission makes efficient operation easy. The broadest range of technology features in the industry work together seamlessly to help you make the most of your equipment investment.

THE NEW CAT® D7

ELEVATE YOUR PRODUCTIVITY



GAIN THE COMPETITIVE EDGE

An unprecedented choice of technology options helps make your job easier.

- + Grade technologies help you hit target grade faster and more accurately. Save time and material, plus help operators of varied experience levels work more efficiently.
- + Link technologies connect you to your machines to help save time and money on service, not to mention added convenience.
- + Operator assist features work behind the scenes to help make machine operation easier.



NO NEED TO SHIFT

JUST SET YOUR GROUND SPEED AND GO.



- + No need to upshift/downshift
- + Fully automatic 4-speed transmission with lock-up clutch torque divider
- + Continuously selects the most productive, efficient gear and engine speed for the job

HIGH DRIVE

Elevated sprocket undercarriage delivers performance and value, while heavier frame and structures bring added durability for lower cost of ownership.

MOVE UP TO 8% MORE MATERIAL PER HOUR

Amp up your productivity with more weight and horsepower and a bigger blade. The smooth-shifting, fully automatic 4-speed powershift transmission provides efficiency and ease of operation, while a Next Generation cab sets a new standard in comfort and productivity.

UP TO 50% MORE PRODUCTIVITY WITH CAT TECHNOLOGY

A broad range of Grade technology options and operator assist features help boost productivity so you get the most from your machine. Remote Flash and Remote Troubleshoot help improve jobsite efficiency by saving you time.

All comparisons to D7E dozer.



MOVE MORE

Harness 6 percent more weight and 12 percent more horsepower to move up to 8 percent more material per hour. Get work done in fewer passes with 10 percent more blade capacity.



HIGH DRIVE, HIGH PERFORMANCE

Elevated sprocket undercarriage delivers better ride and balance, plus improved penetration force for top dozing performance.



FULLY AUTOMATIC

Don't worry about changing gears. A smooth-shifting, fully automatic 4-speed transmission with lock-up clutch automatically optimizes based on load for greatest productivity and fuel efficiency.



RELIABLE POWER

Cat C9.3B engine has a redesigned fuel system that provides greater reliability and more accurate fuel delivery.

All comparisons to D7E dozer.

AUTOMATICALLY EFFICIENT

DO MORE WORK WITH LESS EFFORT



COME ON IN AND MAKE YOURSELF COMFORTABLE

Step into a spacious cab that resets the industry standard for operator comfort, visibility and ease of operation. Integrated Rollover Protective Structure (ROPS) leaves plenty of glass area for all-around visibility. Cleaner sight lines along the hood give you an excellent view to the blade.



Optional seat and displays shown.

OPERATOR-FRIENDLY DISPLAY

Standard 8-inch (203 mm) gauge cluster gives you a clear view of machine/service functions and settings. Or choose an optional 10-inch (254 mm) touchscreen display with easy-to-use operator interface and high-definition rearview camera that shows prominently in the main display.

TAKE A SEAT

A wider air-suspension seat gives you plenty of adjustments, so you can find just the right position. The optional Premium seat adds even more comfort with an armrest that adjusts forward and backward independent of the seat.

WORK SPACE

Enjoy more storage space, along with updated heating/cooling to help keep you more comfortable and reduce window fogging/frosting too.

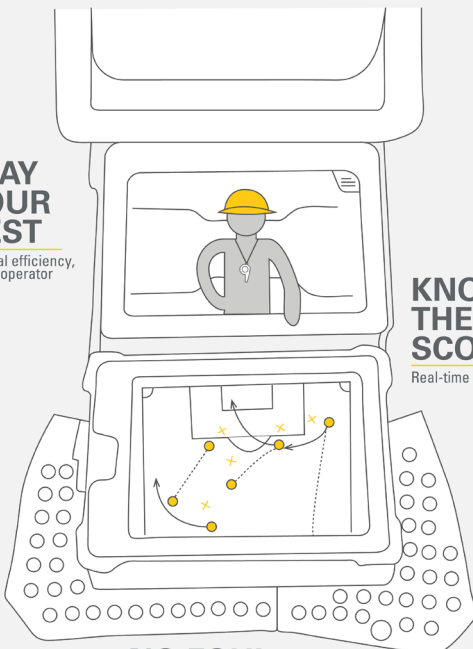
GAIN THE COMPETITIVE EDGE



CAT® TECHNOLOGY IS LIKE HAVING A COACH IN THE CAB

PLAY YOUR BEST

Optimal efficiency,
fewer operator
inputs



KNOW THE SCORE

Real-time Feedback

NO FOUL

Save rework, time, materials

An unprecedented selection of technology options helps you make the most of your equipment investment.

- + Grade technologies help operators of varied skill levels hit target grade faster and more accurately.
- + Optional operator assist features work together behind the scenes to help make machine operation easier.
- + Premium cab option offers optimal interior mounting locations that make it simple to install the grade control system of your choice.
- + All Cat Grade systems are compatible with radios and base stations from Trimble, Topcon and Leica.
- + Link technologies, remote services and tools like the Cat App help connect you to your equipment to help save time and money on service and maintenance.
- + Machine Security System gives you the option to unlock your dozer using a display passcode or Bluetooth® key.

CAT GRADE TECHNOLOGY

BOOST YOUR PRODUCTIVITY

FIRST PASS TO FINISH GRADE

Factory integrated Cat Grade with 3D uses a GPS signal to automatically adjust blade movements – both lift and tilt – as you follow the design. Save time, labor and materials on all phases of the job. The friendly 10-inch (254 mm) touchscreen grade display works like a smart phone, so it is easy for operators to pick up quickly. Antennas are integrated into the cab roof for even better protection.



NO GPS SIGNAL? NO PROBLEM

Cat Grade with Slope Assist automatically maintains operator's pre-established blade position without a GPS signal. Put it to work building pads, creating simple design plans on-the-go or working where GPS is unavailable. Slope Assist works seamlessly alongside 3D GPS systems.

READY WHEN YOU ARE

With Attachment Ready Option (ARO), your dozer comes from the factory ready for simple installation of a grade control system. You will also find a mounting location and connections in the cab to make it easier to utilize your technology systems. ARO with Assist bundles the grade-ready option with features that work in the background to help operators get more done in less time.

Already invested in a grade infrastructure? You can install grade systems from Trimble, Topcon and Leica onto the machine.

READY TO HELP

OPERATOR ASSIST FEATURES



SMOOTH OPERATOR

Stable Blade has been improved to make it even easier to get smoother surfaces faster when operating manually. Works seamlessly with operator blade inputs to help reduce imperfections and produce a smoother surface.

MAKE THE MOST OF EVERY PASS

AutoCarry automates blade lift to help you get more consistent blade loads with each pass and reduces track slip. Works seamlessly with Grade with 3D but can now also be utilized when the dozer is not running in automatics.

OPTIMAL BLADE LOADS

Blade Load Monitor gives you real-time feedback on current load versus the optimal blade load based on your ground conditions. Actively monitors machine load and track slip to help you reach optimal pushing capacity.

KEEP PUSHING FORWARD

Save time, effort, fuel and track wear. If high track slip is detected, Traction Control temporarily reduces track power so the operator can adjust blade load and limit the track slip.

CAT LINK TECHNOLOGY

TAKES THE GUESSWORK OUT OF MANAGING YOUR EQUIPMENT

Cat Link telematics technology helps take the complexity out of managing your jobsites by gathering data generated by your equipment, materials and people and serving it up to you in customizable formats.

CAT PRODUCT LINK™

Product Link™ collects data automatically and accurately from your assets – any type and any brand. Information such as location, hours, fuel usage, productivity, idle time, maintenance alerts, diagnostic codes and machine health can be viewed online through web and mobile applications.



VISIONLINK®

Access information anytime, anywhere with VisionLink® – and use it to make informed decisions that boost productivity, lower costs, simplify maintenance and improve safety and security on your jobsite. With different subscription level options, your Cat dealer can help you configure exactly what you need to connect your fleet and manage your business, without paying for extras you don't want. Subscriptions are available with cellular or satellite reporting or both.



REMOTE SERVICES

The Cat App helps you manage your assets – at any time – right from your smartphone. See fleet location and hours, get critical required maintenance alerts and even request service from your local Cat dealer.

- + **Remote Flash** – get software updates to one or more machines remotely. You just need a designated person close to the machine to initiate/confirm the update.
- + **Remote Grade** lets you wirelessly manage site plans via Trimble Connect Services.
- + **Operator ID** lets you track machine operation by individual operator using the main display and Product Link.



DURABLE BY DESIGN

BIGGER, BRAWNIER, READY TO WORK

Heavier frame and structures, along with some D8-sized components and an updated track roller frame, make the D7 even more durable. The 12-foot (3.5 m) shipping width¹ means you have a dozer that is robust enough to take on tough jobs but easy to transport with the blade installed.

GROUNDING IN DURABILITY

Heavy Duty Extended Life (HDXL) undercarriage is designed to save you money by extending service life in a wide range of applications. Choose Standard or Low Ground Pressure² (LGP) undercarriage to outfit your dozer for the type of work you do.



KEEP PUSHING

Semi-Universal (SU) and Straight (S) blades are 10 percent larger to help you finish in fewer passes. Strong box section design, heavy moldboard construction, hardened bolt-on cutting edges and end bits add strength and durability.

CUTTING EDGE PERFORMANCE

Optional Performance Cutting Edges for SU blades help you move material faster, especially in hard ground.

- + Patented design moves more material per pass – increases blade payload by up to 25 percent³
- + Easier blade penetration in hard/frozen ground, moderate rock
- + Digs deeper – aids blade control, load retention, traction – reduces track slip, improves undercarriage life
- + Equal wear life/life cycle cost³ – no mid-life edge flip or end bit replacement required, reducing downtime for maintenance
- + Built-in wear indicators, drilled and tapped holes for safer installation, interchangeable with traditional edges
- + Versatility – on-plane cutting system allows finish grading

¹ Standard configuration

² Please consult your Cat dealer for availability

³ Compared to standard cutting edges

FACTORY EQUIPPED TO TAKE ON THE TRASH



TOUGH ON TRASH

Factory-installed guarding and seals help protect the machine from impact, wrapping and airborne debris. High-debris cab has impact-resistant polycarbonate doors and dual pane windows to eliminate the need for door screens.

COOLING AND CLEANOUT

High-debris cooling system has automatic reversing fan and slots for easy cleanout. Trash-resistant radiator helps reduce plugging. Laminated thermal shields on the engine provide added protection in high-debris environments.

OPTIMIZED FOR PERFORMANCE

Specialized landfill blades include a trash rack for more capacity when working in lighter material. Heavy Duty Extended Life undercarriage has Kevlar-guarded sealed idlers to help protect against seal damage from wrapping. Center-hole track helps eject debris.

EQUIPPED FOR THE JOB

Choose from a variety of factory options for added protection in harsh applications like forestry and pipe line.



YOUR DOZER, YOUR WAY **BUILD TO SUIT**

Sweeps, door/window screens, debris-resistant cab, heavy guarding and more – pick from a variety of options that helps protect your operator and your equipment investment. Heavier C-frame for angle blades adds durability and Positive Pin Retention Track is ideally suited for higher-impact conditions. Factory connections make it easy to fit the machine with a ripper or a dealer-installed winch. Consult with your Cat dealer to learn more about the right options for the work you do.

MORE THAN MACHINES

BUILT AROUND YOUR SUCCESS

When you buy Cat equipment, you get so much more than the machine. You also get the support of a best-in-class dealer network, backed by a range of flexible solutions, technology, tools and more.



CUSTOMER VALUE AGREEMENTS

A Customer Value Agreement (CVA) from your Cat dealer helps you do more and worry less. A CVA simplifies machine ownership and maintenance, adds the security of expert dealer support and gives you the peace of mind from effective equipment health management.

REPAIR OPTIONS

A broad range of repair options give you choices that work with your needs, budget and timeline. Every repair is performed by expert Cat technicians. You'll receive smart repair advice, a timely, accurate quote and service that gets your machine back into action quickly.

GENUINE CAT PARTS

Genuine Cat Parts deliver the highest level of reliability and productivity. Order direct from your Cat dealer or shop online at parts.cat.com or myparts.cat.com.

FINANCIAL SERVICES

Count on Cat Financial to provide the best finance and extended protection solutions for your business. For more than 30 years, we have helped our customers succeed through financial service excellence.

GET BACK TO WORK

Services to help you save time, save money and get back on the job.

CAT INSPECT

Access your equipment data on your mobile device. This easy-to-use app lets you capture inspection data and integrates with your other Cat data systems, so you can keep a close eye on your fleet.

HYDRAULICS AND HOSE

Whether you choose new, Reman, exchange or rebuilt hydraulic components, you'll get expert diagnostics, testing and contamination control. Cat Hose Service offers hoses and couplings for most makes and models.

CERTIFIED REBUILD

Get a full second machine life at a fraction of the cost of buying new. With upgraded features, safety enhancements and the latest technologies, your old machine will perform even better than it did when it rolled off the line.

TECHNICAL SPECIFICATIONS

See cat.com for complete specifications.

| ENGINE | | |
|------------------------------------|---|---------------------|
| Engine Model | Cat C9.3B | |
| Emissions | UN ECE R96 Stage IIIA emission standards, equivalent to U.S. EPA Tier 3/EU Stage IIIA | |
| Build Number | 17A | |
| Power Train | Fully Automatic 4-Speed | |
| Net Power - 2200 rpm | | |
| ISO 9249:2007/SAE J1349:2011 | 197 kW | 265 hp |
| ISO 9249:2007/SAE J1349:2011 (DIN) | 268 mhp | |
| Displacement | 9.3 L | 567 in ³ |
| Fuel Tank | 465.0 L | 122.8 gal |

- Net power available at the flywheel when the engine is equipped with fan, air cleaner and alternator with engine speed at 2,200 rpm.
- Net power is tested per ISO 9249:2007 and SAE J1349:2011.
- The air conditioning system on this machine contains the fluorinated greenhouse gas refrigerant R134a (Global Warming Potential = 1430). The system contains 1.36 kg of refrigerant which has a CO₂ equivalent of 1.946 metric tonnes.

| WEIGHT | | | | |
|-------------------------|------------------|-----------|-------------------|----------|
| | Operating Weight | | Ground Pressure** | |
| Standard SU with Ripper | 29 776 kg | 65,644 lb | 72.1 kPa | 10.5 psi |
| LGP S with Drawbar | 28 677 kg | 63,220 lb | 43.4 kPa | 6.3 psi |
| Waste Handler | 28 140 kg | 62,035 lb | 68.3 kPa | 9.9 psi |

SU ripper weight with three ripper shanks = 2993 kg (6,596 lb)
 ** with standard shoes and drawbar attachment per ISO 16754

| BLADES | | | | |
|------------------------------|---------------------|----------------------|---------|----------|
| | Capacity | | Width | |
| Standard Semi-Universal (SU) | 7.4 m ³ | 9.7 yd ³ | 3500 mm | 138.0 in |
| LGP Straight (S) | 6.2 m ³ | 8.1 yd ³ | 4150 mm | 163.0 in |
| Standard Angle (A) | 4.2 m ³ | 5.4 yd ³ | 4320 mm | 170.0 in |
| LGP Angle (A) | 4.7 m ³ | 6.2 yd ³ | 4770 mm | 188.0 in |
| Standard Universal (U) | 8.6 m ³ | 11.2 yd ³ | 3788 mm | 149.0 in |
| Standard U-Landfill | 16.6 m ³ | 21.7 yd ³ | 3788 mm | 149.0 in |

| DIMENSIONS* | | | | | | | |
|---|-------------|----------|---------|----------|---------------|----------|--|
| | Standard SU | | LGP S | | Waste Handler | | |
| Track Gauge | 1981 mm | 78.0 in | 2235 mm | 88.0 in | 1981 mm | 78.0 in | |
| Width of Standard Shoe | 610 mm | 24.0 in | 915 mm | 36.0 in | 610 mm | 24.0 in | |
| Width of Tractor (without trunnions) | 2591 mm | 102.0 in | 3150 mm | 124.0 in | 2591 mm | 102.0 in | |
| Machine Height (to ROPS) | 3354 mm | 132.0 in | 3354 mm | 132.0 in | 3354 mm | 132.0 in | |
| Machine Height (to ROPS) including grouser height | 3436 mm | 135.3 in | 3428 mm | 135.0 in | 3436 mm | 435.3 in | |
| Length of Track on Ground | 2972 mm | 117.0 in | 3200 mm | 126.0 in | 2972 mm | 117.0 in | |
| Length of Basic Tractor | 4659 mm | 183.4 in | 4659 mm | 183.4 in | 4659 mm | 183.4 in | |
| With the following attachments, add to basic tractor length | | | | | | | |
| SU Blade | 1125 mm | 44.0 in | | | 1125 mm | 44.0 in | |
| S Blade | | | 840 mm | 33.0 in | | | |
| U Blade | 1365 mm | 54.0 in | | | 1365 mm | 54.0 in | |
| Landfill Blade | 1125 mm | 44.0 in | 840 mm | 33.0 in | 1125 mm | 44.0 in | |
| Drawbar | 260 mm | 10.2 in | 270 mm | 10.6 in | 260 mm | 10.2 in | |
| Ripper | 1555 mm | 61.2 in | 1565 mm | 61.6 in | 1555 mm | 61.2 in | |
| Winch | 735 mm | 28.9 in | 745 mm | 29.3 in | 735 mm | 28.9 in | |

*Heavy Duty Undercarriage

Some features and configurations may not be available in all areas. Please consult your Cat dealer for availability.

STANDARD & OPTIONAL EQUIPMENT

Standard and optional equipment may vary. Consult your Cat dealer for details.

| POWER TRAIN | STANDARD | OPTIONAL |
|---|----------|----------|
| Fully automatic 4-speed transmission with lock-up clutch | • | |
| Cat C9.3B diesel engine | • | |
| Double reduction 3-planet planetary final drives | • | |
| Electric fuel priming pump | • | |
| OPERATOR ENVIRONMENT | STANDARD | OPTIONAL |
| Fully redesigned cab, sound suppressed, with Integrated ROPS and FOPS | • | |
| 8-inch (203 mm) gauge cluster display | • | |
| Full-color 254 mm (10 in) liquid crystal touchscreen display | | • |
| Integrated rearview camera | | • |
| Premium cab with adjustable armrests | | • |
| Cab-mounted modular HVAC system | • | |
| Added storage areas | • | |
| Electrohydraulic implement and steering controls | • | |
| Cloth seat | • | |
| Deluxe leather heated/ventilated seat | | • |
| Communication radio ready | | • |
| Lights – 4 LED | • | |
| Lights – 6 LED | | • |
| Premium lights – 12 LED | | • |
| Integrated warning lights | | • |
| BLADES | STANDARD | OPTIONAL |
| Semi-Universal | | • |
| Universal | | • |
| Straight blade | | • |
| Angle blade | | • |
| Waste/Landfill | | • |
| UNDERCARRIAGE | STANDARD | OPTIONAL |
| Heavy Duty (HDXL with DuraLink) | • | |
| Moderate or Extreme Service track shoes | | • |
| HYDRAULICS | STANDARD | OPTIONAL |
| Independent steering and implement pumps | • | |
| Load-sensing hydraulics | • | |

| CAT TECHNOLOGY | STANDARD | OPTIONAL |
|--|----------|----------|
| Slope Indicate | • | |
| ARO with Assist | | |
| - Slope Assist | | |
| - Traction Control | | |
| - Stable Blade | | • |
| - Blade Load Monitor | | |
| - AutoCarry | | |
| - Third-party Grade Control Ready | | |
| Cat Grade with 3D | | |
| - Full-color 10-inch (254 mm) touchscreen grade display | | • |
| - Grade receivers and antennas | | |
| - Grade Software Enabled Attachment (SEA) | | |
| - ARO with Assist features | | |
| Compatibility with radios and base stations from Trimble, Topcon and Leica | • | |
| Capability to install 3D grade systems from Trimble, Topcon and Leica | • | |
| Product Link, Cellular | • | |
| Product Link – Dual Cellular/Satellite | | • |
| Remote Flash/Troubleshoot | • | |
| Grade Connectivity | | • |
| Operator ID | | • |
| Machine Security – Passcode | • | |
| Machine Security – Bluetooth® | | • |
| Remote Control Ready | | • |
| Cat Command for Dozing | | • |
| SERVICE AND MAINTENANCE | STANDARD | OPTIONAL |
| Fast fuel fill | | • |
| Hydraulic reversing fan | | • |
| Fender access guard rail with built-in shovel holder | | • |
| Ground-level service center | • | |
| 30-minute cab removal | | • |
| Quick access cab floor | | • |
| Ecology drains | | • |
| High-speed oil change | | • |
| Underhood work light | | • |
| ATTACHMENTS | STANDARD | OPTIONAL |
| Fixed parallelogram ripper/curved shanks | | • |
| Adjustable parallelogram ripper/curved shanks | | • |
| Winch | | • |
| Drawbar | | • |
| Striker bar box | | • |
| Side and/or rear screens | | • |
| Sweeps | | • |

Not all features are available in all regions. Please check with your local Cat dealer for specific offering availability in your area.
For additional information, refer to the Technical Specifications brochures for the D7 available at www.cat.com or your Cat dealer.

For more complete information on Cat products, dealer services and industry solutions, visit us on the web at www.cat.com.

VisionLink is a trademark of Trimble Navigation Limited, registered in the United States and in other countries.

Materials and specifications are subject to change without notice. Featured machines in photos may include additional equipment. See your Cat dealer for available options.

©2021 Caterpillar. All Rights Reserved. CAT, CATERPILLAR, LET'S DO THE WORK, their respective logos, Product Link, "Caterpillar Corporate Yellow", the "Power Edge" and Cat "Modern Hex" trade dress as well as corporate and product identity used herein, are trademarks of Caterpillar and may not be used without permission.

www.cat.com www.caterpillar.com

AEXQ3245-00
Build Number: 17A
(Turkey)

