



BACKHOE LOADER SIDE SHIFT MODELS PARTS REFERENCE GUIDE

428, 432, 434, 444

SERIAL NUMBER PREFIX: H7D, H7E, H7K, H7M

LET'S DO THE WORK.™




» PROTECT YOUR INVESTMENT WITH GENUINE CAT® PARTS

Thank you for selecting the Cat® Side Shift Model Backhoe Loaders.

This guide is designed to provide you with a quick reference for the parts and part numbers you need to keep your Cat Backhoe Loader operating at peak efficiency.

MAINTENANCE

Proactive preventative maintenance extends the life of your machine and protects your investment. Only Caterpillar knows Cat equipment's filtration and lubrication requirements and offers parts kits to match your machine's maintenance cycles.

SCHEDULED MAINTENANCE PARTS	
	GREASES
	PLANNED MAINTENANCE KITS

REPLACEMENT PARTS

Proper maintenance minimizes the need for repair and replacement. In the event that replacement parts are required, the use of genuine Cat parts helps maximize machine performance and maintains high resale value.

WEAR PARTS	SALES MODEL	SERIAL NUMBER PREFIX
GROUND ENGAGING TOOLS	428	H7D
WEARPADS AND SHIMS		
REPAIR PARTS	432	H7E
BATTERY		
ENGINE PARTS		
MIRRORS, LIGHTS AND FUSES	434	H7K
CAB GLASS		
ENHANCEMENT PARTS	444	H7M
QUICK DISCONNECTS		
LINKAGE PIN AND BEARING PARTS		

GREASES

Previous Cat Product Name	STANDARD MAINTENANCE GREASES			GREASES FOR UNIQUE APPLICATIONS AND ENVIRONMENTS
	Cat Ultra5 Moly #1	Cat Ultra5 Moly #2	Cat Advanced 3 Moly	
Current Cat Product Name	Cat Extreme Application Grease 1	Cat Extreme Application Grease 2	Cat Prime Application Grease	Hammer Paste
Grade (NLGI)	1	2	2	2
Melting Point C° (F°)	>260 (>500)	>260 (>500)	260 (500)	230 (446)
Ambient Temperature C° (F°)	-35 to +40 (-31 to +104)	-30 to +50 (-22 to +122)	-20 to +40 (-4 to +104)	-20 to +1100 (-4 to +2012)
Base Oil Type	Mineral	Mineral	Mineral	Mineral
Color	Dark Gray	Dark Gray	Dark Gray	Bronze
Cartridge (390 g / 14 oz)	452-5996	452-6001	452-6006	130-6951 (standard) 317-8491 (autolube)
Plastic Pail (5 kg / 11 lb)	—	—	—	133-8807
Plastic Pail (16 kg / 35 lb)	452-5999	452-6004	452-6009	—
Keg (55 kg / 120 lb)	452-5998	452-6003	452-6008	—
Drum (180 kg / 400 lb)	452-5997	452-6002	452-6007	—



PLANNED MAINTENANCE KITS

Backhoe Loader		A								B						
		Engine Oil/Filter Change		Engine Air Filter		Fuel Filter Change	Cabin Air Filter Change		Transmission Filter Change	Axle Oil	Front Differential Oil Change		Front Final Drive Oil Change (each side)		Rear Differential Oil Change	
Sales Model	Serial Number Prefix	Filter Element	Oil Qty L (US Gal) DEO-ULS	Primary Element	Secondary Element	Primary Element	Fresh Air Element	Recirculating Element	Filter Element	Oil Type	Oil Qty L (US Gal) TDTO	O-Ring	Oil Qty L (US Gal)	O-Ring	Oil Qty L (US Gal)	O-Ring
428	H7D	569-8036	9 (2.4)	528-0585	346-6688	540-5119	417-8134	211-2660	471-7003	MTO	11 (2.9)	9R-3176 (QTY 2)	0.7 (0.2)	9R-3176	16 (4.6)	122-7776 (QTY 2)
432	H7E															
434	H7K									TDTO	14 (3.7)	6V-6228 (QTY 2)	1.7 (0.4)	6V-6228	16.5 (4.4)	6V-6228 (QTY 2)
444	H7M															

Backhoe Loader		B										
		Rear Differential Brake Additive		Rear Final Drive Oil Change (each side)		Hydraulic Filter Change			Transmission Oil/Filter Change			
Sales Model	Serial Number Prefix	Oil Qty L (US Gal)	Additive	Oil Qty L (US Gal)	O-Ring	Filter Element	Seal (Housing)	Seal (Plug)	Oil Qty L (US Gal) TDTO	Seal	Breather	
428	H7D	-	-	1.7 (0.5)	2M-9780	362-1163	526-0891	2M-9780	15 (3.9) manual 19 (5) powershift 20 (5.3) lock up	238-5080 manual 5P-6718 powershift / lock up	9G-5127 manual 7T-3251 powershift / lock up	
432	H7E											
434	H7K	0.5 (0.13)	197-0017		6V-6228							19 (5) powershift 20 (5.3) lock up
444	H7M											

Backhoe Loader		C					D		E	
		DEF Filter Change	Belt (Serpentine) Change		Hydraulic Filter Change	Hydraulic Tank	DEF Injector and Gasket Change		Cooling System Coolant (ELC) Change	
Sales Model	Serial Number Prefix	Filter Element	No A/C	With A/C	Oil Qty Hydro Advance L (US Gal)	Breather	Injector	Gasket	No A/C Qty L (US Gal)	With A/C Qty L (US Gal)
428	H7D	378-3187	515-2093	566-8499	41 (10.8)	9R-9925	529-7539	418-2073	14.5 (3.8)	16.5 (4.4)
432	H7E								16 (4.2)	18 (4.8)
434	H7K								15.5 (4.1)	17.5 (4.6)
444	H7M									

Parts Maintenance Kits						
Machine Hours	500	A				
	1000	A	B			
	1500	A		C		
	2000	A	B			
	2500	A				
	3000	A	B	C	D	

Parts Maintenance Kits						
Machine Hours	3500	A				
	4000	A	B			
	4500	A		C		
	5000	A	B			
	5500	A				
	6000	A	B	C	D	

Parts Maintenance Kits						
Machine Hours	6500	A				
	7000	A	B			
	7500	A		C		
	8000	A	B			
	8500	A				
	9000	A	B	C	D	

Parts Maintenance Kits						
Machine Hours	9500	A				
	10000	A	B			
	10500	A		C		
	11000	A	B			
	11500	A				
	12000	A	B	C	D	E

COMMON GROUND ENGAGING TOOLS

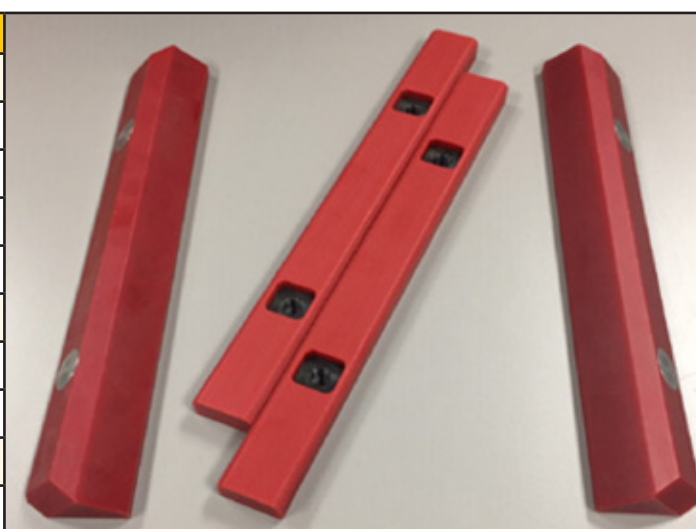
Loader		
Description (Width)	Qty	Part Number
Edge Group – Bolt-On (2262 mm)		
Cutting Edge	2	9W-8215
Hex Head Nut	8	4K-0367
Washer Hard	8	8T-4122
Plow Bolt	8	3F-5108
Edge Group – Bolt-On (2406 mm)		
Cutting Edge	2	118-7110
Hex Head Nut	8	4K-0367
Washer Hard	8	8T-4122
Plow Bolt	8	3F-5108
Edge Group – Bolt-On (2434 mm)		
Cutting Edge	2	220-4691
Hex Head Nut	8	4K-0367
Washer Hard	8	8T-4122
Plow Bolt	8	3F-5108
Cutting Edge MP (2406 mm)		
	1	233-0859
Tooth Group – Uni		
		9R-5866
Unitooth Tip	8	135-8203
Hex Head Nut	16	4K-0367
Plow Bolt	16	4F-3657

Hoe	
Description	Part Number
Diagonal Retention System (DRS230)	
Retainer	201-1239
Pin – GET	500-0269
Diagonal Pin Adapter	
Adapter (25 mm for Rock Buckets)	201-1234
Adapter (20 mm)	201-1235
Adapter (25 mm for Soil Buckets)	253-0234
Tip	
Penetration	208-5235
Chisel	208-5232
Soil Digging	208-5234
Long	208-5236
Twin Sharp	208-5237
Sharp	208-5239
Wide	208-5240



WEARPADS AND SHIMS

Location	Part Number
Stabilizer	
Pad (5.2 mm)	193-1681
Pad (4.2 mm)	193-1683
Pad (6.2 mm)	193-1684
Pad	331-2489
Extendable Stick	
Pad (Side)	319-9667
	319-9668
Powered Shift	
Slideframe	344-5303



BATTERY

Backhoe Loader		Battery	Part Number
Sales Model	Serial Number Prefix	Standard	230-6368
428	H7D		
432	H7E		
434	H7K		
444	H7M		



ENGINE PARTS

Backhoe Loader		Part Number / Reman								
Sales Model	Serial Number Prefix	Engine	Long Block	Alternator	Fuel Injector	Fuel Injection Pump	Water Pump	Starting Motor	Turbo-charger	
428	H7D	541-2952 / 541-2850	-	515-4364	553-8167	553-8165	542-1071	321-8965	20R-4255	572-6424
432	H7E	541-2952								
434	H7K									
444	H7M	541-2952 / 543-5180								



MIRRORS, LIGHTS AND FUSES

Mirrors		Part Number
Rearview	External	180-0448
Bracket	Right	382-2497
Bracket	Left	382-2498
Rearview	Internal	472-9218
Rearview	External Rear	220-4050

Fuses	Part Number
3 Amp Mini	395-9584
10 Amp	9W-1442
10 Amp Mini	113-8490
15 Amp	9W-1441
15 Amp Mini	113-8491
20 Amp	9W-1446
25 Amp	1Q-1905
30 Amp	192-7727
40 Amp	232-6313
50 Amp	418-0363

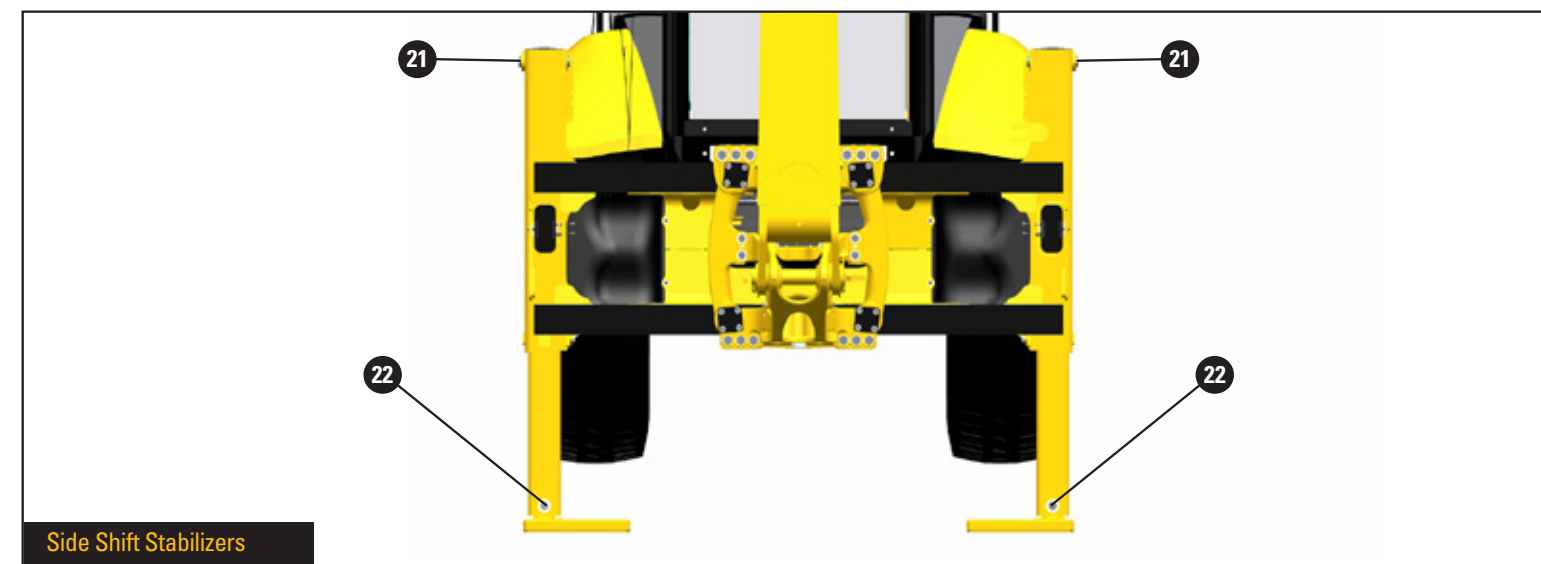
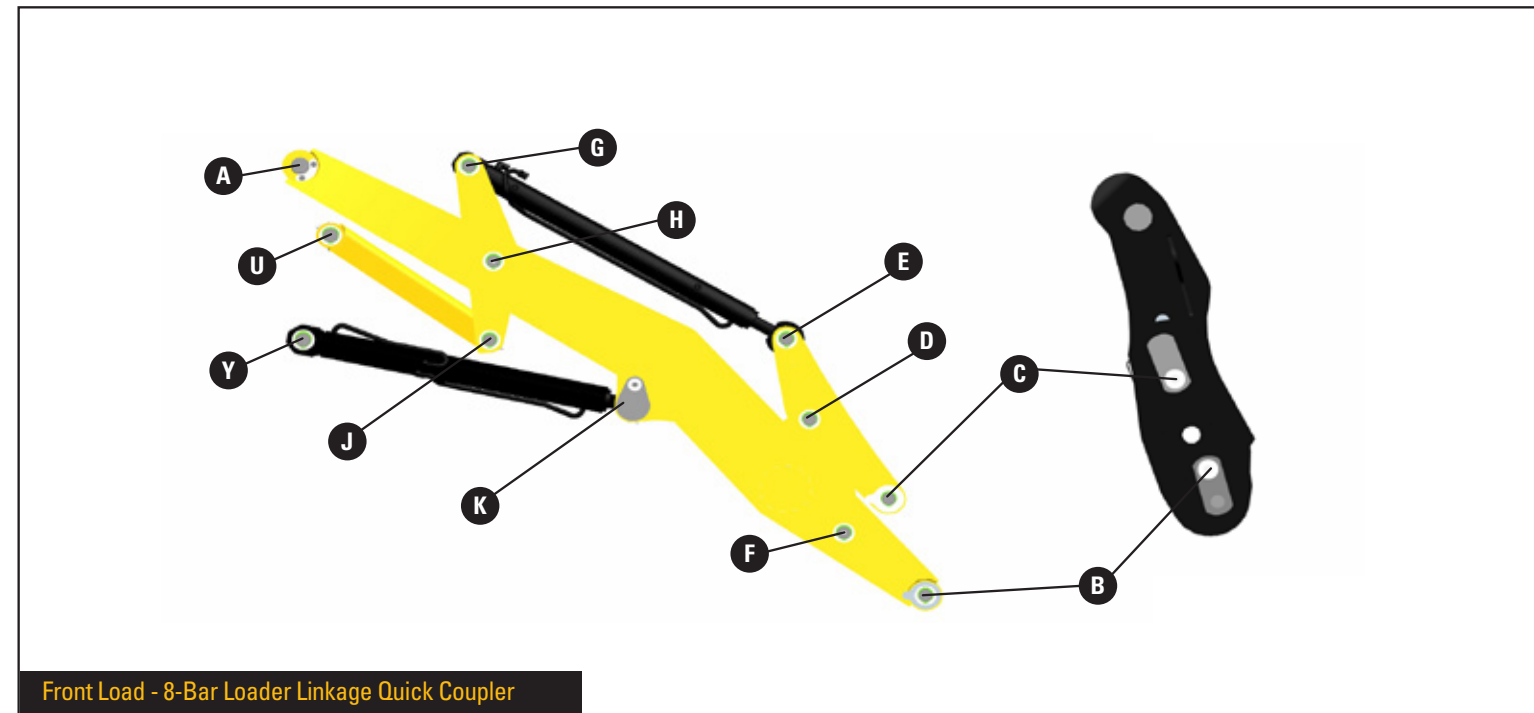
Lights	Lamp Type	Part Number
Flood Lamp (Front and Rear) Long Range	Halogen Light	214-2969
	Halogen Bulb	9W-0607
Flood Lamp (Front and Rear) Wide Range	Halogen Light	214-2968
	Halogen Bulb	9W-0607
Flood Lamp LED (Front and Rear) Wide Range		479-8445
Lamp Signal (Stop, Tail and Turn) (Rear)	Lamp Assembly	336-9096
	Halogen Bulb (Stop)	7S-1800
	Halogen Bulb (Signal)	9W-3326
	Lens	352-4645
Lamp Signal (Stop, Tail and Turn) LED (Rear)		387-6627
Dome Lamp	Lamp Assembly	426-0976
Lamp 12V (Dome)	Lamp	210-8754
Beacon (Warning) Strobe Light	Roof Mounted	140-3668
Beacon (Rotating Warning)	Roof Mounted	309-1325
	Halogen Bulb	9X-8118
Lamp (Head and Signal)		
Traffic Side: Right	Machine Side: Right	195-0189
	Machine Side: Left	195-0190
Traffic Side: Left	Machine Side: Right	195-0191
	Machine Side: Left	195-0192
Lamp (Head and Signal)	Halogen Bulb (Head)	9W-3324
	Lamp (Clear)	226-4561
	Lamp (Signal)	226-4560

CAB GLASS

Position	Part Number	
Windscreen (Top)	382-2342	
Windscreen (Bottom Right)	382-2344	
Windscreen (Bottom Left)	382-2343	
Left Door (Top)	382-2261	
Left Door (Bottom)	382-2263	
Right Door (Top)	382-2274	
Right Door (Bottom)	382-2269	
Left Rear (Top)	382-2249	
Left Rear (Bottom)	382-2310	
Right Rear (Top)	382-2250	
Right Rear (Bottom)	382-2311	
Rear Glass	438-6967	


LINKAGE PIN AND BEARING PART NUMBERS

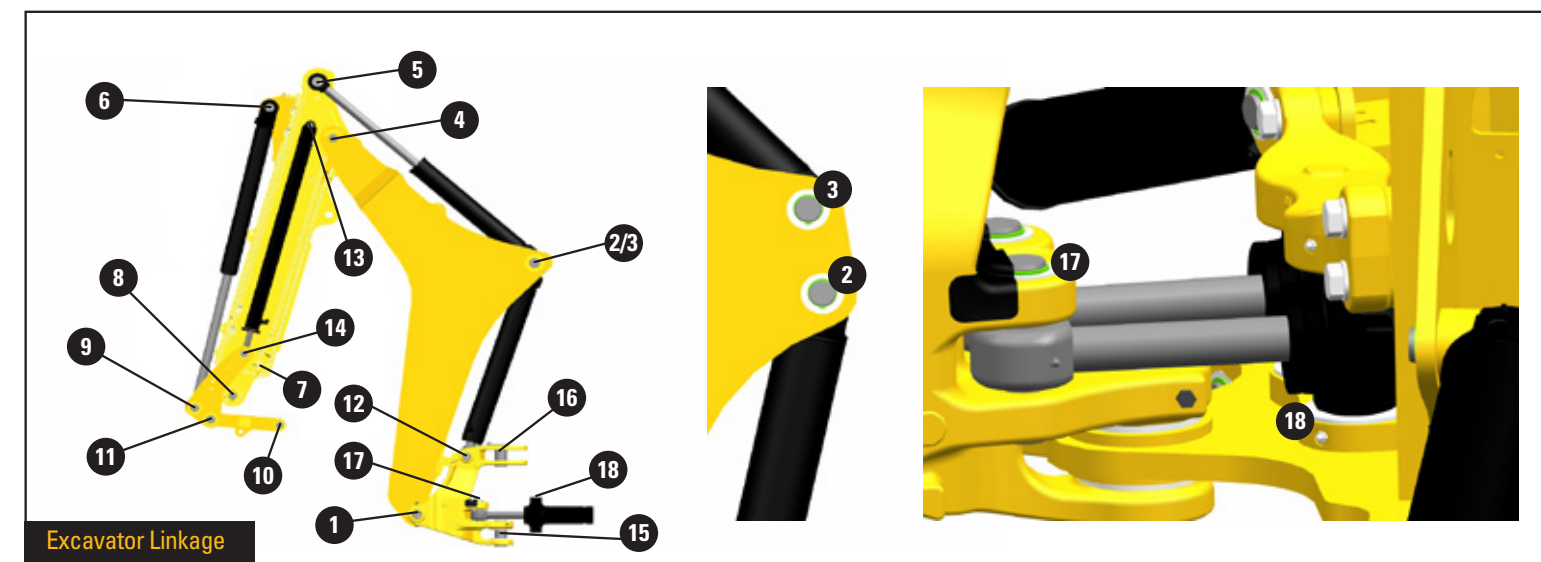
See part numbers on following pages



QUICK DISCONNECTS

Get the most out of your Cat Backhoe Loader with a wide range of hydraulic work tool attachments that can be easily interchanged with Quick Disconnects. Contact your Cat dealer for a complete list of all available attachments.

Function	Twist to connect – Connect under pressure				
	Male	Cap	Female	Cap	
Loader	439-1589	471-1018	439-1588	471-1017	
Hoe	439-1591		439-1590		



FRONT LOAD – 8-BAR LOADER LINKAGE QUICK COUPLER

Linkage Pins																			
Sales Model	Serial Number Prefix	A	B Arm	B Coupling	C Arm	C Coupling	D	E	F	G	H	J	K	U	Y				
428	H7D	341-6152 Pin	438-0593 Pin (QTY 2)	360-2812 Pin (QTY 2)	438-0593 Pin (QTY 2)	360-2812 Pin (QTY 2)	360-2813 Pin (QTY 2)	360-2815 Pin (QTY 2)	360-2814 Pin (QTY 2)	360-2813 Pin (QTY 2)	360-2814 Pin (QTY 2)	360-2813 Pin (QTY 2)	372-5085 Pin Assembly (QTY 2)	360-2816 Pin (QTY 2)	360-2816 Pin (QTY 2)				
432	H7E																		
434	H7K	380-2565 Pin	380-2571 Pin (QTY 2)	378-8852 Pin Assembly (QTY 2)	380-2571 Pin (QTY 2)	378-8852 Pin Assembly (QTY 2)	380-2566 Pin (QTY 2)	384-5429 Pin (QTY 2)	380-2567 Pin (QTY 2)	380-2566 Pin (QTY 2)	380-2567 Pin (QTY 2)	380-2566 Pin (QTY 2)	380-2570 Pin Assembly (QTY 2)	380-2767 Pin (QTY 2)	380-2569 Pin (QTY 2)				
444	H7M																		
Bearings																			
Sales Model	Serial Number Prefix	B Arm	C Arm	D	E	F	G	H	J	K	U	Y							
428	H7D	9R-0411 Bushing (QTY 4)	9R-0153 Bushing (QTY 4)	9R-0153 Bushing (QTY 4)	9R-0153 Bushing (QTY 4)	9R-0411 Bushing (QTY 4)	9R-0153 Bushing (QTY 4)	9R-0411 Bushing (QTY 4)	9R-0153 Bushing (QTY 4)	362-5024 Bushing (QTY 4)	9R-3700 Bushing (QTY 4)	362-5024 Bushing (QTY 4)							
432	H7E				437-3546 Bushing (QTY 4)	9R-3700 Bushing (QTY 4)	437-3546 Bushing (QTY 4)	9R-3700 Bushing (QTY 4)		436-8719 Bushing (QTY 4)		436-8720 Bushing (QTY 4)							
434	H7K	9R-3700 Bushing (QTY 4)	9R-3700 Bushing (QTY 4)		9R-0153 Bushing (QTY 4)	437-3546 Bushing (QTY 4)	9R-3700 Bushing (QTY 4)	437-3546 Bushing (QTY 4)	9R-3700 Bushing (QTY 4)	9R-0153 Bushing (QTY 4)	436-8719 Bushing (QTY 4)	9R-3700 Bushing (QTY 4)	436-8720 Bushing (QTY 4)						
444	H7M					437-3546 Bushing (QTY 4)	9R-3700 Bushing (QTY 4)	437-3546 Bushing (QTY 4)	9R-3700 Bushing (QTY 4)		436-8719 Bushing (QTY 4)		436-8720 Bushing (QTY 4)						
Seals and Grease Fittings																			
Sales Model	Serial Number Prefix	F	H																
428	H7D	3B-8489 Grease Fitting (QTY 2)	3B-8489 Grease Fitting (QTY 2)																
432	H7E																		
434	H7K																		
444	H7M																		
Retention Hardware																			
Sales Model	Serial Number Prefix	A	B Coupling	C Coupling	D	E	F	G	H	J	K	U	Y						
428	H7D	128-7903 Spacer (QTY 2) 128-7905 Spacer (QTY 3) 372-5024 Plate (QTY 2) 8T-4139 Bolt (QTY 4) 8T-4223 Washer (QTY 4)	363-2855 Shim (QTY 3) 363-2856 Shim (QTY 2) 7X-0550 Washer (QTY 4) 7X-0590 Washer (QTY 2) 8T-4956 Bolt (QTY 2)	363-2855 Shim (QTY 4) 363-2856 Shim (QTY 4) 7X-0550 Washer (QTY 4) 7X-0590 Washer (QTY 2) 8T-4956 Bolt (QTY 2)	111-4337 Washer (QTY 6) 6V-3213 Retaining Ring (QTY 4) 9R-0158 Washer (QTY 4)	111-4337 Washer (QTY 6) 6V-3213 Retaining Ring (QTY 4) 9R-0158 Washer (QTY 5)	111-4337 Washer (QTY 6) 6V-3213 Retaining Ring (QTY 4) 9R-0158 Washer (QTY 4)	111-4337 Washer (QTY 6) 6V-3213 Retaining Ring (QTY 4) 9R-0158 Washer (QTY 4)	111-4337 Washer (QTY 10) 6V-3213 Retaining Ring (QTY 4) 9R-0158 Washer (QTY 4)	6V-3213 Retaining Ring (QTY 4) 9R-0158 Washer (QTY 4)	6V-3213 Retaining Ring (QTY 4) 9R-0158 Washer (QTY 4)	7X-0590 Washer (QTY 2) 8T-4139 Bolt (QTY 2)	373-8390 Shim (QTY 4) 6V-4364 Retaining Ring (QTY 2) 6V-7744 Lock Nut (QTY 2) 7X-0542 Washer (QTY 4) 105-3479 Bolt (QTY 2)	373-8390 Shim (QTY 4) 6V-4364 Retaining Ring (QTY 2) 6V-7744 Lock Nut (QTY 2) 7X-0542 Washer (QTY 6) 105-3479 Bolt (QTY 2)					
432	H7E																		
434	H7K	222-7100 Washer (QTY 2) 222-7101 Washer (QTY 3) 379-3930 Plate 398-9220 Bracket Assembly 285-6125 Bolt (QTY 4) 7X-0510 Washer (QTY 4)	383-1329 Shim (QTY 3) 383-1328 Shim (QTY 6) 7X-0550 Washer (QTY 4) 7X-0590 Washer (QTY 2) 8T-4956 Bolt (QTY 2)	383-1329 Shim (QTY 3) 383-1328 Shim (QTY 5) 7X-0550 Washer (QTY 4) 7X-0590 Washer (QTY 2) 8T-4956 Bolt (QTY 2)					111-4337 Washer (QTY 6) 6V-3213 Retaining Ring (QTY 4) 9R-0158 Washer (QTY 4)	111-4337 Washer (QTY 6) 6V-3213 Retaining Ring (QTY 4) 9R-0158 Washer (QTY 5)	111-4337 Washer (QTY 6) 6V-3213 Retaining Ring (QTY 4) 9R-0158 Washer (QTY 4)	111-4337 Washer (QTY 6) 6V-3213 Retaining Ring (QTY 4) 9R-0158 Washer (QTY 4)	373-8390 Shim (QTY 6) 6V-4364 Retaining Ring (QTY 4) 7X-0542 Washer (QTY 4)	6V-3213 Retaining Ring (QTY 4) 9R-0158 Washer (QTY 4)	6V-3213 Retaining Ring (QTY 4) 9R-0158 Washer (QTY 4)	8T-4139 Bolt (QTY 2) 7X-0590 Washer (QTY 2)	108-4282 Bolt (QTY 2) 6V-7744 Washer (QTY 2) 9R-5437 Washer (QTY 6) 210-1707 Shim (QTY 2) 6V-8344 Retaining Ring (QTY 2)	108-4282 Bolt (QTY 2) 6V-7744 Washer (QTY 2) 9R-5437 Washer (QTY 6) 210-1707 Shim (QTY 2) 6V-8344 Retaining Ring (QTY 2)	
444	H7M																		

SIDE SHIFT STABILIZERS

Linkage Pins			
Sales Model	Serial Number Prefix	21	22
428	H7D	330-9669 Pin (QTY 2)	425-1825 Pin Assembly (QTY 2)
432	H7E		
434	H7K		
444	H7M		
Retention Hardware			
Sales Model	Serial Number Prefix	21	22
428	H7D	325-7563 Spacer (QTY 4) 6V-5204 Retaining Ring (QTY 4)	6V-3213 Retaining Ring (QTY 2)
432	H7E		
434	H7K		
444	H7M		

EXCAVATOR LINKAGE

Linkage Pins																												
Sales Model	Serial Number Prefix	Stick Type Standard Stick: Areas 4,5,6,7 Extendable Stick: Areas 4,5,6,7,13 and 14	Linkage Type (Areas 7,8,9,10 and 11)	1	2	4	5	6	7	8	9	10	11	12	13	14	15	16	17	18								
428	H7D	Standard	Fabricated	386-3778 Pin Assembly	316-6945 Pin	316-6946 Pin Assembly	316-6947 Pin	328-9650 Pin	333-0790 Pin	9R-9105 Pin Assembly	333-0791 Pin	333-0792 Pin	326-0089 Pin Assembly	-	-	316-6951 Pin Assembly	316-6952 Pin	310-0851 Pin (QTY 2)	381-8085 Cylinder Assembly (Right) 381-8086 Cylinder Assembly (Left)									
			Cast						320-9164 Pin	154-5280 Pin	320-9241 Pin	328-5234 Pin																
		Extendable 14 ft	Fabricated					316-6948 Pin	333-0790 Pin	9R-9105 Pin Assembly	333-0791 Pin	333-0792 Pin		316-6949 Pin	316-6949 Pin													
			Cast						320-9164 Pin	154-5280 Pin	320-9241 Pin	328-5234 Pin																
432	H7E	Standard	Fabricated					386-3778 Pin Assembly	316-6945 Pin	316-6946 Pin Assembly	316-6947 Pin	328-9650 Pin		333-0790 Pin	9R-9105 Pin Assembly					333-0791 Pin	333-0792 Pin	326-0089 Pin Assembly	-	-	316-6951 Pin Assembly	316-6952 Pin	310-0851 Pin (QTY 2)	381-8085 Cylinder Assembly (Right) 381-8086 Cylinder Assembly (Left)
			Cast											320-9164 Pin	154-5280 Pin					320-9241 Pin	328-5234 Pin							
		Extendable 14 ft	Fabricated									316-6948 Pin		333-0790 Pin	9R-9105 Pin Assembly					333-0791 Pin	333-0792 Pin		316-6949 Pin	316-6949 Pin				
			Cast											320-9164 Pin	154-5280 Pin					320-9241 Pin	328-5234 Pin							
Extendable 16 ft	Fabricated	355-1394 Pin Assembly	333-4760 Pin	333-0790 Pin	9R-9105 Pin Assembly	333-0791 Pin	333-0792 Pin					316-6949 Pin	316-6949 Pin															
	Cast			320-9164 Pin	154-5280 Pin	320-9241 Pin	328-5234 Pin																					
434	H7K	Standard	Fabricated	386-3778 Pin Assembly	316-6945 Pin	316-6946 Pin Assembly	316-6947 Pin					328-9650 Pin	333-0790 Pin	9R-9105 Pin Assembly	333-0791 Pin	333-0792 Pin	326-0089 Pin Assembly	-	-	316-6951 Pin Assembly	316-6952 Pin		310-0851 Pin (QTY 2)	381-8085 Cylinder Assembly (Right) 381-8086 Cylinder Assembly (Left)				
			Cast										320-9164 Pin	154-5280 Pin	320-9241 Pin	328-5234 Pin												
		Extendable 14 ft	Fabricated					316-6948 Pin	333-0790 Pin	9R-9105 Pin Assembly	333-0791 Pin	333-0792 Pin	316-6949 Pin	316-6949 Pin														
			Cast						320-9164 Pin	154-5280 Pin	320-9241 Pin	328-5234 Pin																
444	H7M	Standard	Fabricated					386-3778 Pin Assembly	316-6945 Pin	316-6946 Pin Assembly	316-6947 Pin	328-9650 Pin	333-0790 Pin	9R-9105 Pin Assembly	333-0791 Pin	333-0792 Pin		326-0089 Pin Assembly	-			-			316-6951 Pin Assembly	316-6952 Pin	310-0851 Pin (QTY 2)	381-8085 Cylinder Assembly (Right) 381-8086 Cylinder Assembly (Left)
			Cast										320-9164 Pin	154-5280 Pin	320-9241 Pin	328-5234 Pin												
		Extendable 14 ft	Fabricated									316-6948 Pin	333-0790 Pin	9R-9105 Pin Assembly	333-0791 Pin	333-0792 Pin			316-6949 Pin			316-6949 Pin						
			Cast										320-9164 Pin	154-5280 Pin	320-9241 Pin	328-5234 Pin												
Extendable 16 ft	Fabricated	355-1394 Pin Assembly	333-4760 Pin	333-0790 Pin	9R-9105 Pin Assembly	333-0791 Pin	333-0792 Pin					316-6949 Pin	316-6949 Pin															
	Cast			320-9164 Pin	154-5280 Pin	320-9241 Pin	328-5234 Pin																					

EXCAVATOR LINKAGE

Bearings																																
Sales Model	Serial Number Prefix	Stick Type Standard Stick: Areas 4,5,6,7 Extendable Stick: Areas 4,5,6,7,13 and 14	Linkage Type (Areas 7,8,9,10 and 11)	1	2	3	4	5	6	7	8	9	10	11	12	15	16	17	18													
428	H7D	Standard	Fabricated	331-1521 Bushing (QTY 2)	212-8960 Bearing (QTY 2)	215-1906 Bushing (QTY 2)	213-6683 Bushing (QTY 2)	331-1520 Bearing	323-2470 Bearing	9R-3092 Bushing (QTY 2)	9R-7891 Bearing (QTY 2)	9R-3092 Bushing (QTY 2)	9R-0147 Bushing (QTY 2)	9R-0170 Bushing (QTY 2)	331-1520 Bearing	331-1521 Bushing	331-1522 Bushing	213-6702 Bushing (Frame-Swing) (QTY 4) 274-4274 Bushing (Rod End) (QTY 2)	9R-4110 Bushing (Frame-Sliding) (QTY 4) 9T-2883 Bushing (Cylinder-Trunnion) (QTY 4)													
			Cast								9R-0162 Bushing (QTY 2)		213-6703 Bearing (QTY 2)	9R-0139 Bushing (Lifting Eye) (QTY 2) 9R-0170 Bushing (without Lifting Eye) (QTY 2)																		
		Extendable 14 ft	Fabricated								9R-7891 Bearing (QTY 2)		9R-0147 Bushing (QTY 2)	9R-0170 Bushing (QTY 2)																		
			Cast								9R-0162 Bushing (QTY 2)		213-6703 Bearing (QTY 2)	9R-0139 Bushing (Lifting Eye) (QTY 2) 9R-0170 Bushing (without Lifting Eye) (QTY 2)																		
432	H7E	Standard	Fabricated								331-1521 Bushing (QTY 2)		212-8960 Bearing (QTY 2)	215-1906 Bushing (QTY 2)						213-6683 Bushing (QTY 2)	331-1520 Bearing	323-2470 Bearing	9R-3092 Bushing (QTY 2)	9R-7891 Bearing (QTY 2)	9R-3092 Bushing (QTY 2)	9R-0147 Bushing (QTY 2)	9R-0170 Bushing (QTY 2)	331-1520 Bearing	331-1521 Bushing	331-1522 Bushing	213-6702 Bushing (Frame-Swing) (QTY 4) 274-4274 Bushing (Rod End) (QTY 2)	9R-4110 Bushing (Frame-Sliding) (QTY 4) 9T-2883 Bushing (Cylinder-Trunnion) (QTY 4)
			Cast																					9R-0162 Bushing (QTY 2)		213-6703 Bearing (QTY 2)	9R-0139 Bushing (Lifting Eye) (QTY 2) 9R-0170 Bushing (without Lifting Eye) (QTY 2)					
		Extendable 14 ft	Fabricated																					9R-7891 Bearing (QTY 2)		9R-0147 Bushing (QTY 2)	9R-0170 Bushing (QTY 2)					
			Cast																					9R-0162 Bushing (QTY 2)		213-6703 Bearing (QTY 2)	9R-0139 Bushing (Lifting Eye) (QTY 2) 9R-0170 Bushing (without Lifting Eye) (QTY 2)					
434	H7K	Standard	Fabricated	331-1521 Bushing (QTY 2)	212-8960 Bearing (QTY 2)	215-1906 Bushing (QTY 2)	213-6683 Bushing (QTY 2)	331-1520 Bearing	323-2470 Bearing	9R-3092 Bushing (QTY 2)		9R-7891 Bearing (QTY 2)			9R-3092 Bushing (QTY 2)	9R-0147 Bushing (QTY 2)	9R-0170 Bushing (QTY 2)	331-1520 Bearing	331-1521 Bushing					331-1522 Bushing		213-6702 Bushing (Frame-Swing) (QTY 4) 274-4274 Bushing (Rod End) (QTY 2)	9R-4110 Bushing (Frame-Sliding) (QTY 4) 9T-2883 Bushing (Cylinder-Trunnion) (QTY 4)					
			Cast									9R-0162 Bushing (QTY 2)				213-6703 Bearing (QTY 2)	9R-0139 Bushing (Lifting Eye) (QTY 2) 9R-0170 Bushing (without Lifting Eye) (QTY 2)															
		Extendable 14 ft	Fabricated									9R-7891 Bearing (QTY 2)				9R-0147 Bushing (QTY 2)	9R-0170 Bushing (QTY 2)															
			Cast									9R-0162 Bushing (QTY 2)				213-6703 Bearing (QTY 2)	9R-0139 Bushing (Lifting Eye) (QTY 2) 9R-0170 Bushing (without Lifting Eye) (QTY 2)															
444	H7M	Standard	Fabricated								331-1521 Bushing (QTY 2)	212-8960 Bearing (QTY 2)	215-1906 Bushing (QTY 2)	213-6683 Bushing (QTY 2)		331-1520 Bearing	323-2470 Bearing			9R-3092 Bushing (QTY 2)	9R-7891 Bearing (QTY 2)	9R-3092 Bushing (QTY 2)	9R-0147 Bushing (QTY 2)		9R-0170 Bushing (QTY 2)			331-1520 Bearing	331-1521 Bushing	331-1522 Bushing	213-6702 Bushing (Frame-Swing) (QTY 4) 274-4274 Bushing (Rod End) (QTY 2)	9R-4110 Bushing (Frame-Sliding) (QTY 4) 9T-2883 Bushing (Cylinder-Trunnion) (QTY 4)
			Cast																		9R-0162 Bushing (QTY 2)		213-6703 Bearing (QTY 2)		9R-0139 Bushing (Lifting Eye) (QTY 2) 9R-0170 Bushing (without Lifting Eye) (QTY 2)							
		Extendable 14 ft	Fabricated																		9R-7891 Bearing (QTY 2)		9R-0147 Bushing (QTY 2)		9R-0170 Bushing (QTY 2)							
			Cast																		9R-0162 Bushing (QTY 2)		213-6703 Bearing (QTY 2)		9R-0139 Bushing (Lifting Eye) (QTY 2) 9R-0170 Bushing (without Lifting Eye) (QTY 2)							
Extendable 16 ft	Fabricated	9R-7891 Bearing (QTY 2)	9R-0147 Bushing (QTY 2)	9R-0170 Bushing (QTY 2)																												
	Cast	9R-0162 Bushing (QTY 2)	213-6703 Bearing (QTY 2)	9R-0139 Bushing (Lifting Eye) (QTY 2) 9R-0170 Bushing (without Lifting Eye) (QTY 2)																												

EXCAVATOR LINKAGE

Seals and Grease Fittings					
Sales Model	Serial Number Prefix	1	7	15	16
428	H7D	3B-8489 Grease Fitting (QTY 2)	3B-8489 Grease Fitting	3B-8489 Grease Fitting	3B-8489 Grease Fitting
432	H7E				
434	H7K				
444	H7M				

LET'S DO THE WORK.™

PEDJ0791-00
(Europe)

May 2021

© 2021 Caterpillar. All Rights Reserved. CAT, CATERPILLAR, LET'S DO THE WORK, their respective logos, "Caterpillar Corporate Yellow," the "Power Edge" and Cat "Modern Hex" trade dress, as well as corporate and product identity used herein, are trademarks of Caterpillar and may not be used without permission.

