

# CAT® SELF-SERVICE OPTIONS

## STABILIZER PAD REPLACEMENT

SHOP NOW



SCAN / [CLICK](#)

Backhoe loaders and telehandlers use stabilizer arms to enable safe and productive machine operation. These hydraulically actuated arms extend out from the machine to provide a wide, stable base when using the backhoe (backhoe loader) or when lifting loads (telehandler). The pads used on the end of the stabilizer arms are either grouser type or street type. Grouser-type pads use metal grousers to provide firm contact on loose materials. Street-type pads use rubber pads bolted to the metal grousers to provide firm contact on pavement or concrete while preventing damage to the surface. Damaged or worn pads should be replaced to ensure continued safe machine operation and to prevent potential damage to paved/concrete surfaces.



### Warning signs

Watch for these common repair indicators

- >> Worn/bent stabilizer pad
- >> Reduced stabilizer pad traction
- >> Indications of surface damage to paved/concrete surfaces



## Elements of the Stabilizer Pad Replacement Self-Service Option

### Recommended Parts

- >> Stabilizer pad assembly

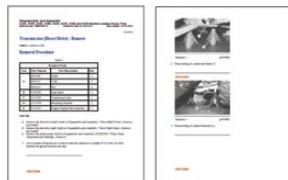
### Recommended Tools

- >> Lifting device
- >> Lifting eye

### Additional Options

- >> Inspect/replace stabilizer hydraulic cylinders
- >> Inspect/replace stabilizer cylinder hydraulic hoses
- >> Stabilizer pin replacement

### Service Instructions



**Genuine Cat parts**  
backed by our standard Cat warranty



**Service instructions**  
including safety & cleanliness guidelines



**Recommended tooling**  
with option to purchase



**Technical support**  
from dealer experts

**LET'S DO THE WORK.™**

[cat.com/selfservice](http://cat.com/selfservice)

PEJJ0416 © 2021 Caterpillar. All Rights Reserved.  
CAT, CATERPILLAR, LET'S DO THE WORK, their respective logos, "Caterpillar Corporate Yellow," the "Power Edge" and Cat "Modern Hex" trade dress as well as corporate and product identity used herein, are trademarks of Caterpillar and may not be used without permission.

