

CAT® APP RELEASE NOTES iOS_2.24 | ANDROID_2.24

April 2021

CAT® APP

24/7 EQUIPMENT MANAGEMENT ON-THE-GO

Efficient equipment management starts with the Cat App. Track the location and health of your equipment, order service and parts, and activate telematics devices directly from your mobile device. Staying on top of your fleet 24/7 has never been easier.

WHAT'S NEW

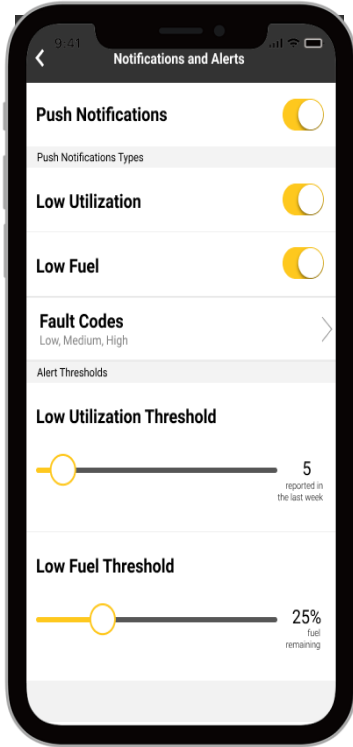
This month's release gives Cat App users more visibility into their equipment health with support for all levels of fault codes and new notifications settings and filters. Manage your equipment's uptime and reduce operating costs with fault code insights, wherever you are.

NEW FEATURES

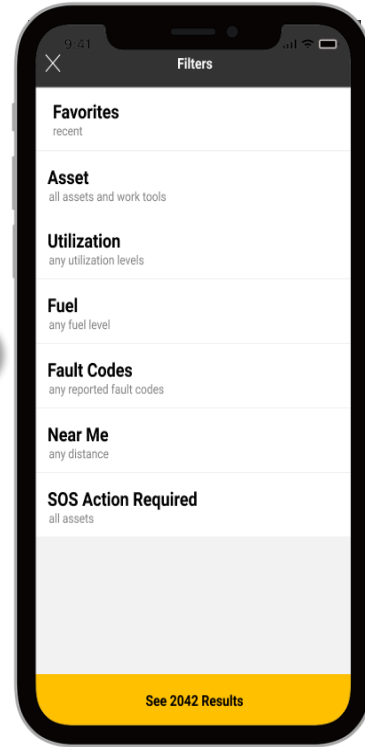
Fault Code Notifications

Move from reactive to proactive with the latest fault code notification update. With support for all levels of fault codes, Cat App users can prioritize notification preferences to receive critical information about their equipment – from trigger events to catastrophic failures. Customize your preferences by prioritizing and filtering the fault code level. Move from alert to action, all from the palm of your hand.

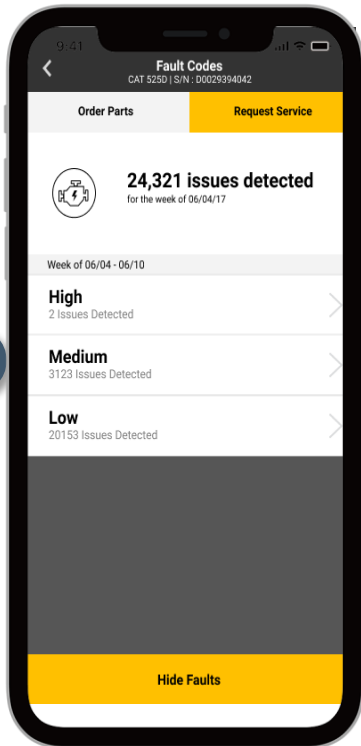
- 1 Fault code push notification preference addition on the Notifications and Alerts screen
- 2 Filter assets by fault code levels from the Assets List
- 3 Choose fault codes by level on the Asset Fault Codes screen
- 4 Filter notifications by fault code level on the Notifications screen



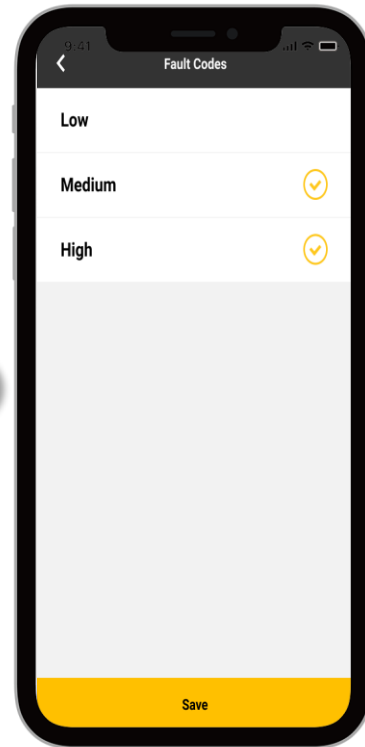
1



2



3



4



Updates to Frequently Asked Questions: Full Fleet and Utilization – Runtime Filter

Q: How can I see OEM, work tools, and location tracking equipment?

A: To manage your full fleet in the Cat App, you can pull data from other OEM equipment with an activated telematics subscription right into the Cat App, My.Cat.com and VisionLink or install a Product Link box on your equipment (order and activate in the Cat App). Contact your dealer to learn more about managing your full fleet in the Cat App.

Q: How does the Utilization-Runtime filter work?

A: The Utilization - Runtime filter works by identifying the asset runtimes based on a 40-hour, 5-day work week. Low <20% represents 8 or less hours of asset runtime during the week. Medium 20% to 80% represents 9 to 31 hours of asset runtime during the week. High >80% represents 32 or more hours of asset runtime during the week.

BUG FIXES

We've addressed the following bug fixes to enhance the overall user experience:

FIX DETAILS	VERSION	BUG NUMBER
Android - Firebase crashes for 2.23.1	2.24	368124
Android - Login - Password length not validated	2.24	366173
Android - PL161 - device scan fails to time out	2.24	368364
Android - PL161 - Entering make code does not resolve to make name	2.24	359966
Android - PM - share details improvement	2.24	343329
Android - Prefs - NotifsAndAlerts lowUtil label changes	2.24	366259
Android - Tapping two tiles causes multiple Asset details pages to pop up	2.24	338609
Android - Util hours - "0.0" displayed instead of "--"	2.24	342809
Android Firebase crashes for 2.23.2	2.24	376343
iOS - AssetDetails - color mismatch while PM and OFFLINE banners appears together	2.24	367353
iOS - AssetDetails - crash on Dealer tile	2.24	347907
iOS - Create Account - In German Country field does not have mandatory field indicator	2.24	367426
iOS - Create Account - Keyboard appears over phone field when suggestion text is present	2.24	339266
iOS - EDV - fuel level chart timestamp doesn't change format	2.24	365308
iOS - Filters - >80% Utilization Runtime filter missing some assets	2.24	342799
iOS - Fleet list - duplicated assets appear	2.24	351400
iOS - Login - Missing translation login_promo_action_msg2	2.24	374131
iOS - Login different Get Started translations	2.24	374133
iOS - Need help popup title	2.24	374161
iOS - NeedHelp/ForgotUsername wrong example for translation	2.24	374181
iOS - Preference - Fresh install login to account with Serial preference always shows Asset ID preference	2.24	342686