



D4

Track-Type Tractor

Technical Specifications

Configurations and features may vary by region. Please consult your Cat® dealer for availability in your area.

Table of Contents

Specifications	2
Engine	2
Transmission – Travel Speed	2
Service Refill Capacities	2
Drawbar Pull	2
D4	3
Blades	3
D4 LGP	4
Blades	4
Track Shoes	5
Heavy Duty/Forestry Dozer	5
Ripper	6
Winch	6
Standards	7
Sustainability – Sound and Vibration Levels	7
Air Conditioning System	7
Technology Features	8
Standard and Optional Equipment	9

D4 Track-Type Tractor Specifications

Engine

Engine Model	Cat® C4.4 with twin turbo	
Build Number	16A	
Emissions	U.S. EPA Tier 4 Final/ EU Stage V/Japan 2014/ Korea Tier 4 Final	
Net Power (2,100 rpm)		
SAE J1349	97 kW	130 hp
ISO 9249	97 kW	130 hp
ISO 9249 (DIN)	132 mhp	
Engine Power – Maximum (2,200 rpm)		
SAE J1995	119 kW	160 hp
ISO 14396	117 kW	157 hp
ISO 14396 (DIN)	159 mhp	
Bore	105 mm	4.13 in
Stroke	127 mm	4.99 in
Displacement	4.4 L	268.5 in ³

- Net power available at the flywheel when the engine is equipped with fan, air cleaner, aftertreatment, and alternator with engine speed at 2,100 rpm.
- Advertised power is tested per the specified standard in effect at the time of manufacture.
- No derating required up to 3000 m (9,840 ft) altitude, beyond 3000 m (9,840 ft) automatic derating occurs.
- All non-road Tier 4 Interim and Final, Stage IIIB, IV and V, Japan 2014 (Tier 4 Final) and Korea Tier 4 Final diesel engines are required to use only ultra-low sulfur diesel (ULSD) fuels containing 15 ppm (mg/kg) sulfur or less. Biodiesel blends up to B20 (20% blend by volume) are acceptable when blended with 15 ppm (mg/kg) sulfur or less ULSD. B20 should meet ASTM D7467 specification (biodiesel blend stock should meet Cat biodiesel spec, ASTM D6751 or EN 14214). Cat DEO-ULS™ or oils that meet the Cat ECF-3, API CJ-4, API CK-4 and/or ACEA E9 are required. Consult your OMM for further machine specific fuel recommendations.
- Diesel Exhaust Fluid (DEF) used in Cat Selective Catalytic Reduction (SCR) systems must meet the requirements outlined in the International Organization for Standardization (ISO) standard 22241.

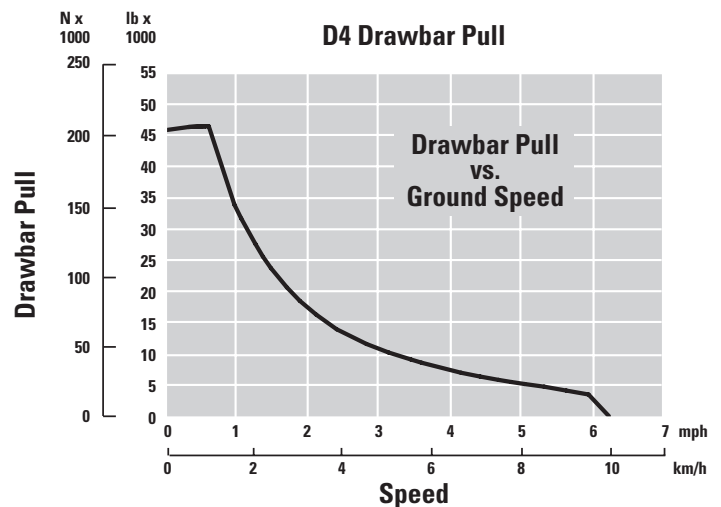
Transmission – Travel Speed

Transmission Type	Hydrostatic	
Forward	0-10 km/h	0-6.2 mph
Reverse	0-10 km/h	0-6.2 mph

Service Refill Capacities

Fuel Tank	260 L	69 gal
DEF Tank	19 L	5 gal
Cooling System	24 L	6.3 gal
Engine Crankcase	11 L	2.9 gal
Final Drives (each)	18.5 L	4.9 gal
Hydraulic Tank	64 L	16.9 gal

Drawbar Pull



D4 Track-Type Tractor Specifications

D4

Operating Weight*	13 272 kg	29,259 lb
Shipping Weight**	13 006 kg	28,673 lb
Ground Pressure (ISO 16754)	40.5 kPa	5.9 psi
Undercarriage (Standard)	40 Section/ 8 Bottom Rollers	
1 Track Gauge	1770 mm	70 in
2 Width of Track Shoe (Standard)	560 mm	22 in
3 Width of Tractor	2330 mm	92 in
4 Length of Track on Ground	2653 mm	1,104 in
Ground Contact Area (ISO 16754)	3.27 m ²	5,070 in ²
Grouser Height (Moderate/Extreme Service)	48/57 mm	1.9/2.2 in
Ground Clearance	350 mm	14.0 in
5 Machine Height***	2965 mm	117 in
6 Length of Basic Tractor****	4731 mm	181 in

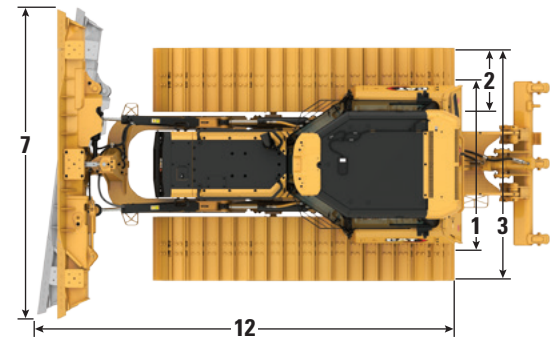
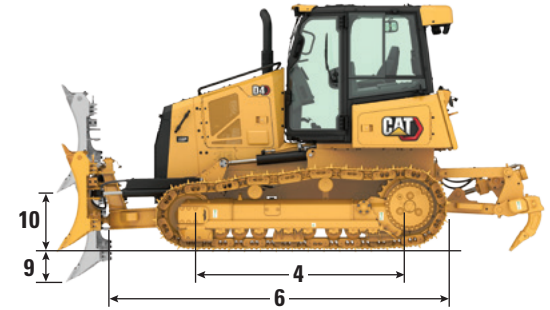
All dimensions above with Cat Abrasion™ undercarriage with Extreme Service shoes of maximum width for configuration, VPAT blade, and calculated per ISO 16754 unless otherwise specified.

*Operating weights: includes EROPS, A/C, lights, VPAT Dozer, VPAT blade, transmission, drawbar, engine enclosure, 3-valve hydraulics, 100% fuel, Cat Comfort Series air suspension seat and operator.

**Shipping weight includes EROPS, A/C, lights, VPAT Dozer, VPAT blade, transmission, drawbar, engine enclosure, 3-valve hydraulics, 10% fuel, Cat Comfort Series air suspension seat.

***Machine height from tip of grouser to top of ROPS cab.

****Length of Basic Tractor from blade to drawbar.



LGP Model with Foldable VPAT Blade Shown

Blades

Configuration	VPAT		Foldable VPAT	
Capacity (ISO 9246)	3.26 m ³	4.26 yd ³	3.26 m ³	4.26 yd ³
7 Width across End Bits	3196 mm	10.5 ft	3196 mm	10.5 ft
Width without End Bits	3097 mm	10.2 ft	3097 mm	10.2 ft
Width across End Bits (Blade Angled 24°)	2920 mm	115 in	2920 mm	115 in
Width without End Bits (Blade Angled 24°)	2829 mm	111.4 in	2829 mm	111.4 in
Width of the Machine (Foldable Blade Angled 24° for transportation purpose only)	—		2371 mm	93.3 in
Maximum Blade Angle	24°		24°	
8 Height	1291 mm	50.8 in	1291 mm	50.8 in
9 Dig Depth	470 mm	18.5 in	470 mm	18.5 in
10 Lift Height	953 mm	37.5 in	953 mm	37.5 in
11 Maximum Tilt at Blade Corner	226 mm	8.9 in	226 mm	8.9 in
Maximum Tilt Angle	8°		8°	
Pitch Adjustment	60° (cutting edge/ground, nominal); -2°/+4°			
12 Length of Machine (Blade Straight)	5142 mm	202.4 in	5142 mm	202.4 in
Length of Machine (Blade Angled 24°)	5738 mm	226.3 in	5738 mm	226.3 in
Blade Weight	1005 kg	2,215 lb	1195 kg	2,634.5 lb

D4 Track-Type Tractor Specifications

D4 LGP

Operating Weight*	14 008 kg	30,882 lb
Shipping Weight**	13 742 kg	30,296 lb
Ground Pressure (ISO 16754)	31 kPa	4.5 psi
Undercarriage (Standard)	40 Section/ 8 Bottom Rollers	
1 Track Gauge	2000 mm	79 in
2 Width of Track Shoe (Standard)	760 mm	30 in
3 Width of Tractor	2760 mm	109 in
4 Length of Track on Ground	2653 mm	104 in
Ground Contact Area (ISO 16754)	4.46 m ²	6,912 in ²
Grouser Height (Moderate/Extreme Service)	48/57 mm	1.9/2.2 in
Ground Clearance	350 mm	14.0 in
5 Machine Height***	2965 mm	117 in
6 Length of Basic Tractor****	4731 mm	181 in

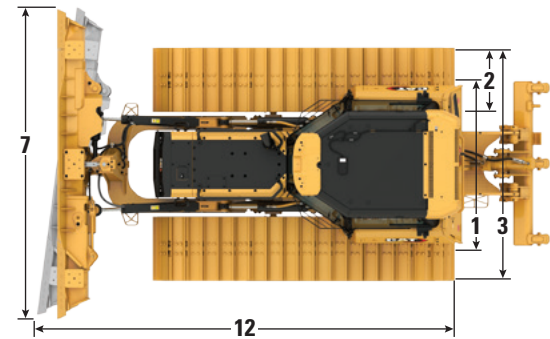
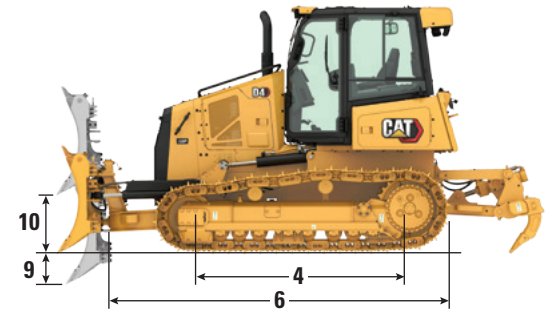
All dimensions above with Cat Abrasion undercarriage with Extreme Service shoes of maximum width for configuration, VPAT blade, and calculated per ISO 16754 unless otherwise specified.

*Operating weights: includes EROPS, A/C, lights, VPAT Dozer, VPAT blade, transmission, drawbar, engine enclosure, 3-valve hydraulics, 100% fuel, Cat Comfort Series air suspension seat and operator.

**Shipping weight includes EROPS, A/C, lights, VPAT Dozer, VPAT blade, transmission, drawbar, engine enclosure, 3-valve hydraulics, 10% fuel, Cat Comfort Series air suspension seat.

***Machine height from tip of grouser to top of ROPS cab.

****Length of Basic Tractor from blade to drawbar.



Foldable VPAT Blade Shown

Blades

Configuration	LGP VPAT		Foldable LGP VPAT	
Capacity (ISO 9246)	3.81 m ³	4.98 yd ³	3.81 m ³	4.98 yd ³
7 Width across End Bits	3684 mm	12.0 ft	3684 mm	12.0 ft
Width without End Bits	3573 mm	11.7 ft	3573 mm	11.7 ft
Width across End Bits (Blade Angled 24°)	3366 mm	132.5 in	3366 mm	132.5 in
Width without End Bits (Blade Angled 24°)	3264 mm	128.5 in	3264 mm	128.5 in
Width of the Machine (Foldable Blade Angled 24° for transportation purpose only)	—		2815 mm	110.8 in
Maximum Blade Angle	24°		24°	
8 Height	1323 mm	52.1 in	1323 mm	52.1 in
9 Dig Depth	470 mm	18.5 in	470 mm	18.5 in
10 Lift Height	953 mm	37.5 in	953 mm	37.5 in
11 Maximum Tilt at Blade Corner	260 mm	10.2 in	260 mm	10.2 in
Maximum Tilt Angle	8°		8°	
Pitch Adjustment	60° (cutting edge/ground, nominal); -2°/+4°			
12 Length of Machine (Blade Straight)	5142 mm	202.5 in	5142 mm	202.5 in
Length of Machine (Blade Angled 24°)	5837 mm	229.8 in	5837 mm	229.8 in
Blade Weight	1105 kg	2,436 lb	1306 kg	2,879 in

D4 Track-Type Tractor Specifications

Track Shoes

Some track shoes not available in all regions. Please consult your Cat dealer for details.

Standard		
510 mm (20 in)	Cat Abrasion™	Moderate Service
510 mm (20 in)	Cat Abrasion	Extreme Service
560 mm (22 in)	Cat Abrasion	Moderate Service
560 mm (22 in)	Cat Abrasion	Extreme Service
510 mm (20 in)	Heavy Duty	Extreme Service
560 mm (22 in)	Heavy Duty	Extreme Service
LGP		
760 mm (30 in)	Cat Abrasion	Moderate Service
760 mm (30 in)	Cat Abrasion	Extreme Service
760 mm (30 in)	Cat Abrasion XL	Extended Life/Extreme Abrasion
760 mm (30 in)	Heavy Duty	Extreme Service
760 mm (30 in)	Heavy Duty	Self-Cleaning

Heavy Duty/Forestry Dozer

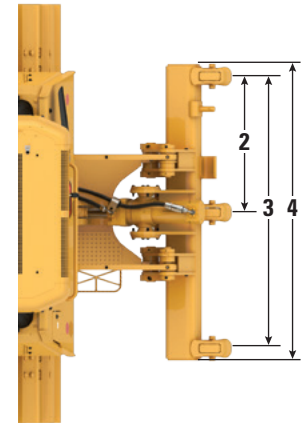
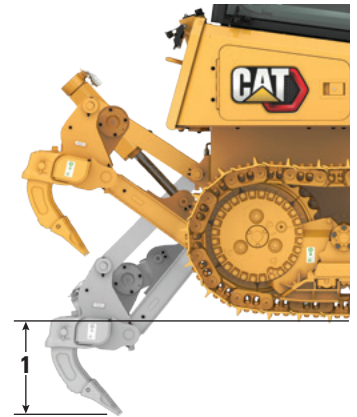
You can outfit your D4 with a variety of factory options designed to provide added protection in heavy-duty applications like forestry and land clearing. Please consult with your Cat dealer about the variety of options available to best equip your dozer for the work that you do:

- Heavy duty cab with polycarbonate windows
- Cab protection package with sweeps and rear screen
- Heavy Duty cab protection package with sweeps, rear screen, side screen, rear light guards
- Rear screen
- Heavy duty front protection package with heavy duty radiator grill and standard crankcase guard
- Heavy duty protection package with heavy duty radiator grill, heavy duty fuel tank guard, heavy duty crankcase guard (also available for fast fill/fast fill ready models)
- Heavy duty undercarriage
- Extreme service track shoes with Heavy duty undercarriage
- Track guiding guards
- Six or eight LED lights
- Flashing beacon

D4 Track-Type Tractor Specifications

Ripper

Type Fixed	Parallelogram	
1 Maximum Penetration Force		
D4	42.2 kN	9,480 lb
D4 LGP	45.1 kN	10,138 lb
Maximum Pry-out Force		
D4	166.7 kN	37,480 lb
D4 LGP	166.7 kN	37,480 lb
2 Pocket Spacing	896 mm	35.3 in
3 Shank Gauge	1792 mm	70.6 in
Shank Section	58.5 mm × 138 mm	2.3 in × 5.4 in
Number of Pockets	3	
4 Overall Beam Width	1951 mm	76.8 in
Beam Cross Section	165 mm × 211 mm	6.5 in × 8.3 in
Maximum Penetration	360 mm	14.2 in
Weight with One Shank	845 kg	1,863 lb
Each Additional Shank	34 kg	75 lb



Winch

Winch Model	PA50	
Winch Drive	Hydrostatic	
Weight*	907 kg	2,000 lb
Winch and Bracket Length	845 mm	33.2 in
Winch Case Width	740 mm	29.1 in
Drum Diameter	205 mm	8 in
Drum Width	274 mm	11 in
Flange Diameter	457 mm	18 in
Drum Capacity (recommended rope)	93 m	306 ft
Drum Capacity (optional rope)	67 m	220 ft
Rope Recommended Diameter	19 mm	0.75 in
Optional Cable Size	22 mm	0.87 in
Cable Ferrule Size (O.D.)	54 mm	2.13 in
Cable Ferrule Size (length)	67 mm	2.63 in
Maximum Bare Drum		
Line Pull	222.4 kN	50,000 lbf
Line Speed	38 m/min	124 ft/min
Maximum Full Drum		
Line Pull	115.7 kN	26,000 lbf
Line Speed	70 m/min	230 ft/min

*Weight includes pump, operator controls, oil, mounting brackets and spacers.

Standards

ROPS/FOPS/OPS

- ROPS (Rollover Protective Structure) offered by Caterpillar for the machine meets ROPS criteria ISO 3471:2008.
- FOPS (Falling Object Protective Structure) meets ISO 3449:2005 Level II.
- OPS (Operator Protective Structure) screens meet OPS criteria per ISO 8084:2003 and WCB G604:2011.

Brakes

- Brakes meet the standard ISO 10265:2008.

Sound and Vibration – Cab

Sound Level Information

- The declared dynamic operator sound pressure level is 76 dB(A) when “ISO 6396:2008” is used to measure the value for an enclosed cab. The measurements were conducted at 70% of the maximum engine cooling fan speed. The sound level may vary at different engine cooling fan speeds. The cab was properly installed and maintained. The measurements were conducted with the cab doors and the cab windows closed.

NOTE: The dynamic operator sound pressure level uncertainty is ± 2 dB(A).

- Hearing protection may be needed when the machine is operated with an open operator station, in a noisy environment, or with a cab that is not properly maintained.
- The guaranteed exterior sound power level is 109 dB(A) when the value is measured according to the dynamic test procedures and the conditions that are specified in “ISO 6395:2008.” The measurements were conducted at 70% of the maximum engine cooling fan speed. The sound level may vary at different engine cooling fan speeds.
- Sound Level Information for Machines in European Union Countries and in Countries that Adopt the “EU Directives.” The information below applies to only the machine configurations that have the “CE” mark on the Product Identification Plate. If equipped, the certification label – 109 dB(A) – is used to verify the environmental sound certification of the machine to the requirements of the European Union. The value that is listed on the label indicates the guaranteed exterior sound power level (L_{WA}) at the time of manufacture for the conditions that are specified in “2000/14/EC.”

Sustainability – Sound and Vibration Levels

Sound Levels

Guaranteed Exterior Sound Power

2000/14/EC ISO 6395:2008	109 dB(A)
--------------------------	-----------

Dynamic Operator Sound Pressure Level (L_{WA})

ISO 6396:2008	76 dB(A)
---------------	----------

Vibration Levels

- The hand/arm vibration per ISO 5349:2001 of this machine is below 2.5 m/s^2 , for an experienced operator in a dozing application.
- The whole body vibration per ISO/TR25398:2006 of this machine is below 0.5 m/s^2 for an experienced operator in a dozing application.
- Operator’s seat meets the input “spectral class EM6” according to ISO 7096:2000. Seat has a transmissibility factor of “SEAT<0.7.”

Air Conditioning System

The air conditioning system on this machine contains the fluorinated greenhouse gas refrigerant R134a (Global Warming Potential = 1430). The system contains 1.6 kg of refrigerant which has a CO₂ equivalent of 2.288 metric tons.

D4 Track-Type Tractor Specifications

Technology Features

The broadest choice of technology features helps you get the most from your dozer.

GRADE	Premium Display	Grade with Slope Assist	Grade with 3D
Grade with 3D	—	+ ¹	✓
Third Party Grade Control Ready	✓	✓	✓
ASSIST			
Slope Indicate			
Stable Blade	✓	✓	✓
Traction Control			
Slope Assist	—	✓	✓
VISION/DETECT			
High Definition (HD) Rear Camera with Backup Lines	✓	✓	✓
LINK			
Product Link™ Cellular	✓	✓	✓
Product Link Dual Mode	⊕	⊕	⊕
Remote Flash/Troubleshoot	✓	✓	✓
Grade Connectivity	—	✓	✓
OPERATOR FEATURES			
Operator ID ²	✓	✓	✓
Machine Security – Passcode ²	✓	✓	✓
Machine Security – Bluetooth ^{®2}	⊕	⊕	⊕

¹ Requires Software Enabled Attachment (SEA)

² Contact Dealer to Enable

✓ Standard

+ Dealer Install Option

⊕ Factory Option

Standard and Optional Equipment

Standard and optional equipment may vary. Consult your Cat dealer for details.

	Standard	Optional		Standard	Optional
POWER TRAIN			OPERATOR ENVIRONMENT		
Cat C4.4 diesel engine	✓		Cab – Standard ROPS/FOPS (air suspended seat, joystick controls)	✓	
U.S. EPA Tier 4 Final/EU Stage V/ Japan 2014/Korea Tier 4 Final Certified Engine with Aftertreatment	✓		Cab – Comfort Package (heated joystick controls, heated and ventilated seat)		✓
ADEM A6 Electronic Control Module	✓		Cab – Heavy Duty Package (polycarbonate windows, air suspended seat, joystick controls)		✓
Air-to-air aftercooling	✓		Cloth air suspension seat	✓	
Glow plug starting aid	✓		Heated/ventilated seat		✓
3000 m (9,840 ft) altitude operation capability without derating	✓		10-inch (254 mm) touchscreen display	✓	
Hydraulically driven, variable speed fan	✓		Rear view camera	✓	
Auto-reversing fan		✓	Electro-hydraulic implement and steering controls	✓	
Aluminum bar plate cooling system (radiator, power train, aftercooler)	✓		Electronically programmable speed selector	✓	
Air cleaner with integrated precleaner, dust ejector and under hood air intake	✓		Adjustable armrests	✓	
Air cleaner with turbine precleaner		✓	Heated joystick controls		✓
Electrical lift/priming pump	✓		Retractable seat belt, 76 mm (3 in)	✓	
Engine decelerating function (rotary switch and pedal engine speed control)	✓		12V radio ready (plug and play)	✓	
Hydrostatic, infinite variable speed transmission	✓		Radio – AM/FM/AUX/USB/Bluetooth		✓
Selections and electronic control enhancements for the transmission/ engine system	✓		Footrests for slope work	✓	
Programmable/selectable bi-directional shifting	✓		Integrated air conditioning with automatic temperature control	✓	
Engine Idle Shutdown	✓		Electronic engine air cleaner service indicator	✓	
Auto Engine Speed Control	✓		Electronic water-in-fuel switch	✓	
			Product Link ready GSM or Satellite	✓	
			Intermittent wiper	✓	
			Storage compartments	✓	
			Cup holder	✓	
			Coat hook	✓	
			Rear view mirror	✓	

(continued on next page)

D4 Standard and Optional Equipment

Standard and Optional Equipment *(continued)*

Standard and optional equipment may vary. Consult your Cat dealer for details.

	Standard	Optional		Standard	Optional
CAT TECHNOLOGY			UNDERCARRIAGE		
Standard technology features:	✓		Heavy Duty Undercarriage	✓	
– Slope Indicate			Cat Abrasion Undercarriage		✓
– Stable Blade			Cat Abrasion Extended Life Undercarriage		✓
– Traction Control			Center-tread, sprocketed idler with Cat Abrasion or standard idler with Heavy Duty	✓	
– Third Party Grade Control Ready			Lifetime lubricated track rollers (8 + 2 carrier rollers) and idlers	✓	
Grade with Slope Assist (Grade Ready + Assist Features):		✓	Tracks: 40 sections – 560 mm (22 in) Heavy Duty Extreme Service (ES) for D4	✓	
– Slope Assist			Tracks: 40 sections – 760 mm (30 in) Heavy Duty Extreme Service (ES) for D4 LGP	✓	
– Attachment Ready Option (ARO)			Hydraulic track adjusters	✓	
– Standard technology features			Center track guiding guard (LGP only)	✓	
Cat Grade with 3D:		✓	Replaceable sprocket rim segments	✓	
– Full-color 10-inch (254 mm) touchscreen grade display			Full track guiding guard		✓
– Grade receivers and antennas			Front and rear track guiding guard		✓
– AutoCarry™			Center track guiding guard – Cat Abrasion Extended Life		✓
– Grade Software Enabled Attachment (SEA)					
– Grade with Slope Assist features			BLADES		
Product Link, Cellular	✓		VPAT blade	✓	
Product Link – Dual Cellular/Satellite		✓	Foldable VPAT blade		✓
Remote Flash/Troubleshoot	✓		Manual blade pitch	✓	
Operator ID	✓		Powered blade pitch		✓
Machine Security – Passcode	✓		Blade Shake	✓	
Machine Security – Bluetooth		✓	HYDRAULICS		
			Three valve-hydraulics	✓	
			Load sensing hydraulics	✓	

(continued on next page)

D4 Standard and Optional Equipment

Standard and Optional Equipment (continued)

Standard and optional equipment may vary. Consult your Cat dealer for details.

	Standard	Optional		Standard	Optional
ELECTRICAL			ATTACHMENTS		
Horn	✓		Front pull device	✓	
Back-up alarm	✓		Rigid drawbar	✓	
12V converter, 10A diagnostic connector	✓		Ripper ready package		✓
950 CCA class 31 batteries	✓		Ripper ready package, powerpitch		✓
Six halogen lights	✓		Winch ready package		✓
Six LED lights		✓	Dual (ripper and winch) ready package		✓
Eight LED lights, Premium		✓	Dual (ripper and winch) ready package, powerpitch		✓
Flashing beacon		✓	Ripper package, curved		✓
105 Amp brush-type alternator (24 volt)	✓		Ripper package, straight		✓
24V electric starter	✓		Winch preparation		✓
Cold weather starter		✓	Drawbar	✓	
Cold weather package (120V)		✓	Counterweight, rear		✓
Cold weather package (240V)		✓	Counterweight, rear slab		✓
Heated, insulated breather		✓	Rear attachment, none		✓
SERVICE AND MAINTENANCE			DEALER INSTALLED ATTACHMENTS		
Fast fuel fill		✓	Hydraulic winch arrangement		✓
Shovel mounting bracket		✓	Fairlead, three rollers		✓
Fuel refilling pump		✓	Fourth roller conversion kit		✓
High speed oil change		✓	Winch step		✓
Antifreeze coolant (-37° C/-34.6° F)	✓		GUARDING		
Extended life coolant	✓		Standard protection package (bottom guard, fan guard)	✓	
Cat HYDO™ Advanced 10 hydraulic fluid	✓		Front protection package		✓
Bio hydraulic oil		✓	Heavy duty protection package		✓
Extended service intervals (1,000 hours* engine oil and filter, 1,000 hours power train)	✓		CAB PROTECTION		
Ecology drains (engine oil, engine coolant, hydraulic)	✓		Cab standard protection package (sweeps, rear screen)		✓
Scheduled Oil Sampling (S·O·S SM) ports (engine, hydrostatic, hydraulics and engine coolant)	✓		Cab heavy duty protection package (sweeps, rear screen, side screens, rear light guards)		✓
Hinged radiator louvered grill	✓		Cab rear screen		✓
			OTHER STANDARD EQUIPMENT		
			C-Frame, cylinders and lines	✓	
			Crankcase guard	✓	
			Perforated engine enclosures	✓	
			Lockable engine enclosures	✓	

*S·O·S sampling required. Please consult Operation and Maintenance Manual (OMM) for complete service information.

For more complete information on Cat products, dealer services, and industry solutions, visit us on the web at www.cat.com

© 2021 Caterpillar
All rights reserved

Materials and specifications are subject to change without notice. Featured machines in photos may include additional equipment. See your Cat dealer for available options.

CAT, CATERPILLAR, LET'S DO THE WORK, their respective logos, "Caterpillar Corporate Yellow," the "Power Edge" and Cat "Modern Hex" trade dress as well as corporate and product identity used herein, are trademarks of Caterpillar and may not be used without permission.

AEX03213 (04-2021)
Build Number: 16A
(Aus-NZ, Eur, Jpn,
N Am, S Korea, Turkey)

