

SNOW ATTACHMENTS

2021 | BUILDING CONSTRUCTION PRODUCTS

SKID STEER LOADER / COMPACT TRACK LOADER /
BACKHOE LOADER / COMPACT WHEEL LOADER / SMALL WHEEL LOADER





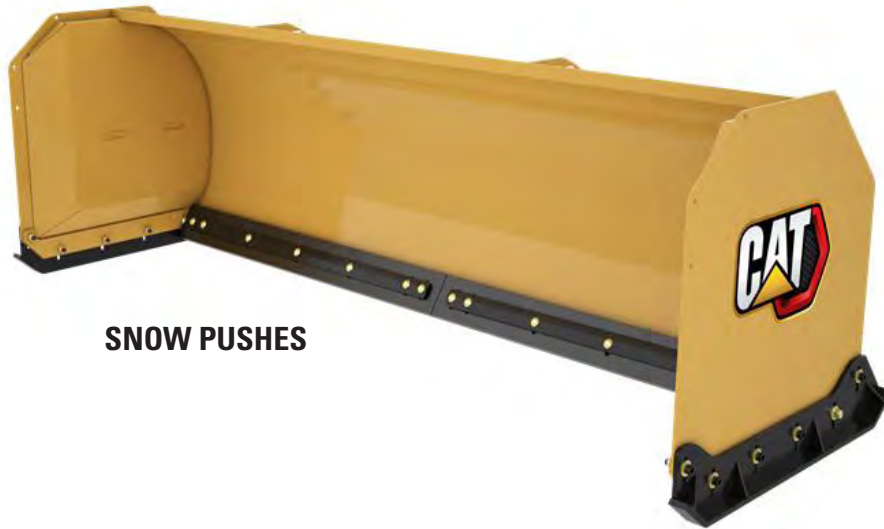
INDEX

SNOW PUSHES - SSL COUPLER.....	3
SNOW PUSHES - FUSION™ COUPLER	4
SNOW PUSHES - IT COUPLER.....	5
SNOW PUSHES - BUCKET RECEIVER.....	6
SNOW PUSH BACK DRAG EDGES.....	7
SNOW BLOWERS	8
ANGLE BROOMS	10
MULTI V-PLOWS	12
SNOW WINGS.....	13
SNOW PLOWS	16
INDUSTRIAL SNOW PLOWS	17
ANGLE BLADES	18
LIGHT MATERIAL BUCKETS.....	19
MATERIAL HANDLING BUCKETS	21

SNOW ATTACHMENTS FOR THE SKID STEER LOADERS (SSL), COMPACT TRACK LOADERS (CTL), MULTI TERRAIN LOADERS (MTL) WILL BE INCLUDED IN SSL/CTL DESCRIPTIONS; COMPACT WHEEL LOADERS 903, 906 - 908 (90X); 910, 914, 918, 920, (91X); SMALL WHEEL LOADERS, 926, 930 (92X), 938 (93X) AND BACKHOE LOADERS (ALL MODELS)

PART NUMBERS IN THIS BROCHURE ARE CURRENT AS OF MARCH 2021.

Cat® straight snow pushes are designed for optimal snow removal or any material pushing application. Removing applications can range from parking lots, driveways, airport runways and storage lots. Designed to roll and fold snow with a profiled mold board, the straight snow push maximizes the amount of snow being pushed. Once material is contained and displaced, streamlined box supports ensure that snow does not cling to the tool, increasing productivity. The Cat straight snow push features a standard trip edge system which protects your machine and tool from unseen obstacles. The snow push shown below is without trip edge system.



SNOW PUSHES

SSL COUPLER SNOW PUSHES				SSL / CTL / CWL	
MODEL	8 ft (2.44 m)	8 ft (2.44 m)	8 ft (2.44 m)	10 ft (3.05 m)	10 ft (3.05 m)
Working Width - in (mm)	96 (2438)	96 (2438)	96 (2438)	120 (3048)	120 (3048)
Overall Width - in (mm)	101 (2553)	101 (2553)	101 (2553)	124 (3162)	124 (3162)
Overall Height - in (mm)	36 (914)	39 (994)	39 (994)	36 (914)	39 (994)
Length - in (mm)	44 (1109)	45 (1143)	45 (1143)	44 (1109)	45 (1143)
Weight - lb (kg)	778 (353)	1036 (470)	1036 (470)	866 (393)	1153 (523)
Trip Edge	No	Yes	Yes	Yes	Yes
Edge Height - in (mm)	5.8 (148)	4.7 (119)	4.7 (119)	5.8 (148)	4.7 (119)
Edge Type	Rubber	Rubber	Steel	Rubber	Rubber
Part Number	509-3705	479-8115	479-8120	509-3706	479-8086
Price	\$	\$	\$	\$	\$
Cutting Edge	489-3913	489-3913	489-3921	482-1496*	482-1496*
Price	\$	\$	\$	\$	\$

*Order quantity of two.

SSL COUPLER SNOW PUSHES (CONT.)			SSL / CTL / CWL	
MODEL	10 ft (3.05 m)	12 ft (3.66 m)	12 ft (3.66 m)	12 ft (3.66 m)
Working Width - in (mm)	120 (3048)	144 (3658)	144 (3658)	144 (3658)
Overall Width - in (mm)	124 (3162)	149 (3772)	149 (3772)	149 (3772)
Overall Height - in (mm)	39 (994)	36 (914)	39 (994)	39 (994)
Length - in (mm)	45 (1143)	44 (1109)	45 (1143)	45 (1143)
Weight - lb (kg)	1153 (523)	952 (432)	1347 (611)	1402 (636)
Trip Edge	Yes	No	Yes	Yes
Edge Height - in (mm)	4.7 (119)	5.8 (148)	4.7 (119)	4.7 (119)
Edge Type	Steel	Rubber	Rubber	Steel
Part Number	479-8096	509-3707	479-8089	479-8099
Price	\$	\$	\$	\$
Cutting Edge	482-7668*	489-3929*	489-3929*	489-3927*
Price	\$	\$	\$	\$

FUSION™ COUPLER SNOW PUSHES				CWL / SWL		
MODEL	12 ft (3.66 m)	14 ft (4.27 m)	16 ft (4.88 m)	12 ft (3.66 m)	14 ft (4.27 m)	16 ft (4.88 m)
Working Width - in (mm)	144 (3658)	168 (4267)	192 (4877)	144 (3658)	168 (4267)	192 (4877)
Overall Width - in (mm)	151 (3829)	175 (4439)	199 (5048)	151 (3829)	175 (4439)	199 (5048)
Overall Height - in (mm)	44 (1128)	44 (1128)	44 (1128)	44 (1128)	44 (1128)	44 (1128)
Length - in (mm)	62 (1574)	62 (1574)	62 (1574)	62 (1574)	62 (1574)	62 (1574)
Weight - lb (kg)	2932 (1330)	3177 (1441)	3422 (1552)	2932 (1330)	3177 (1441)	3422 (1552)
Trip Edge	Yes	Yes	Yes	Yes	Yes	Yes
Edge Height - in (mm)	8 (194)	8 (194)	8 (194)	8 (194)	8 (194)	8 (194)
Edge Type	Steel	Steel	Steel	Rubber	Rubber	Rubber
Machine	CWL / SWL	SWL	SWL	CWL / SWL	SWL	SWL
Part Number	477-9891	477-9893	477-9897	508-8310	508-8315	508-8320
Price	\$	\$	\$	\$	\$	\$
Cutting Edge	482-7664*	482-7629*	482-7618*	499-3627*	499-3628*	499-3629*
Price	\$	\$	\$	\$	\$	\$

*Order quantity of two.

SNOW ATTACHMENTS | 2021



**IT COUPLER
SNOW PUSHES**

IT COUPLER SNOW PUSHES			BHL / 91X	
MODEL	10 ft (3.05 m)	12 ft (3.66 m)	10 ft (3.05 m)	12 ft (3.66 m)
Working Width - in (mm)	120 (3048)	144 (3658)	120 (3048)	144 (3658)
Overall Width - in (mm)	127 (3220)	151 (3829)	127 (3220)	151 (3829)
Overall Height - in (mm)	38 (975)	38 (975)	38 (975)	38 (975)
Length - in (mm)	51 (1279)	51 (1279)	51 (1279)	51 (1279)
Weight - lb (kg)	1803 (818)	1995 (905)	1803 (818)	4112 (1865)
Trip Edge	Yes	Yes	Yes	Yes
Edge Height - in (mm)	5 (137)	5 (137)	5 (137)	5 (137)
Edge Type	Steel	Steel	Rubber	Rubber
Machine	BHL / 91X	BHL / 91X	BHL / 91X	BHL / 91X
Part Number	479-8087	479-8091	508-8290	508-8295
Price	\$	\$	\$	\$
Cutting Edge	492-2966*	482-7664*	499-3626*	499-3627*
Price	\$	\$	\$	\$

*Order quantity of two.



Cat straight snow pushes with bucket receiver are designed to mount to the machine without having to remove the machine bucket. This is ideal for machines that are not equipped with a quick coupler option. The bucket receiver snow push is secured to the machine by sliding the cutting edge of the bucket into the receiver arms, then fastening chains around the bucket of the machine. The chains are easily tightened by using the over center load binders that are attached to the snow push.



BUCKET RECEIVER SNOW PUSHES

BUCKET RECEIVER SNOW PUSHES					
MODEL	10 ft (3.05 m)	12 ft (3.66 m)	10 ft (3.05 m)	12 ft (3.66 m)	12 ft (3.66 m)
Working Width - in (mm)	120 (3048)	144 (3658)	120 (3048)	144 (3658)	144 (3658)
Overall Width - in (mm)	127 (3220)	151 (3829)	127 (3220)	151 (3829)	151 (3829)
Overall Height - in (mm)	38 (975)	38 (975)	38 (975)	38 (975)	43 (1086)
Length - in (mm)	69 (1755)	69 (1755)	69 (1755)	77 (1945)	77 (1945)
Weight - lb (kg)	1995 (905)	2185 (991)	4112 (1865)	2787 (1264)	2787 (1264)
Trip Edge	Yes	Yes	Yes	Yes	Yes
Trip Edge Height - in (mm)	5 (137)	5 (137)	5 (137)	8 (194)	8 (194)
Trip Edge Type	Steel	Steel	Rubber	Rubber	Steel
Machine	BHL / CWL	BHL / CWL	BHL / CWL	BHL / CWL	SWL
Part Number	479-8088	479-8092	508-8300	508-8305	477-9892
Price	\$	\$	\$	\$	\$
Cutting Edge	482-7618	489-3927	482-1496*	489-3929	482-7664*
Price	\$	\$	\$	\$	\$

**Order quantity of two.*

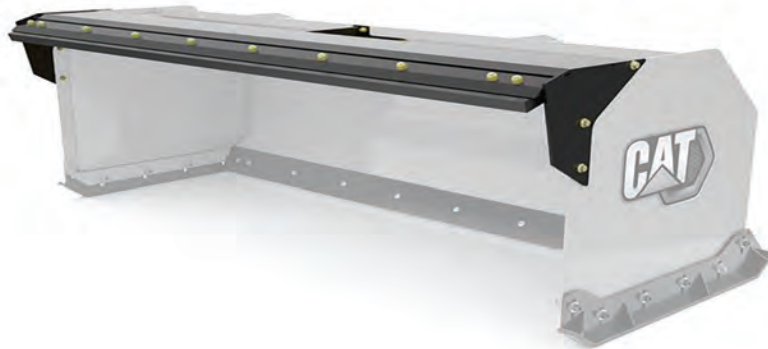
SNOW ATTACHMENTS | 2021

BUCKET RECEIVER SNOW PUSHES (CONT.)

MODEL	14 ft (4.27 m)	12 ft (3.66 m)	14 ft (4.27 m)	16 ft (4.88 m)	16 ft (4.88 m)
Working Width - in (mm)	168 (4267)	144 (3658)	168 (4267)	192 (4877)	192 (4877)
Overall Width - in (mm)	175 (4439)	151 (3829)	175 (4439)	199 (5048)	199 (5048)
Overall Height - in (mm)	43 (1086)	43 (1086)	43 (1086)	43 (1086)	43 (1086)
Length - in (mm)	77 (1945)	77 (1945)	77 (1945)	77 (1945)	77 (1945)
Weight - lb (kg)	3031 (1375)	2635 (1195)	2879 (1306)	3113 (1412)	3276 (1486)
Trip Edge	Yes	Yes	Yes	Yes	Yes
Trip Edge Height - in (mm)	8 (194)	8 (194)	8 (194)	8 (194)	8 (194)
Trip Edge Type	Steel	Rubber	Rubber	Rubber	Steel
Machine	SWL	SWL	SWL	SWL	SWL
Part Number	477-9894	508-8325	508-8330	508-8335	477-9898
Price	\$	\$	\$	\$	\$
Cutting Edge	482-7629*	489-3929*	499-3628*	499-3629*	482-7618*
Price	\$	\$	\$	\$	\$

*Order quantity of two.

SNOW PUSH BACK DRAG EDGES



SNOW PUSH BACK DRAG EDGES (FOR SSL ONLY)

MODEL	8 ft (2.5 m)	10 ft (3.1 m)	12 ft (3.7 m)
Steel	481-3680	481-3686	481-3689
Price	\$	\$	\$
Rubber	481-3675	481-3676	481-3679
Price	\$	\$	\$

Cat snow blowers are designed for removing snow from streets, parking lots, driveways and sidewalks, making them ideal for various winter cleanup and maintenance applications.



SNOW BLOWERS

SNOW BLOWERS						SSL / CTL / CWL	
MODEL	SR115	SR118	SR121	SR318	SR321	SR418	SR421
Intake Width in (mm)	51 (1290)	64 (1614)	77 (1942)	64 (1614)	77 (1942)	64 (1614)	77 (1942)
Cutting Height in (mm)	34 (867)	34 (867)	34 (867)	34 (867)	34 (867)	34 (867)	34 (867)
Overall Width in (mm)	62 (1572)	74 (1877)	86 (2181)	74 (1877)	86 (2181)	74 (1877)	86 (2181)
Overall Height mm (in)	73 (1843)	73 (1843)	73 (1843)	73 (1843)	73 (1843)	73 (1843)	73 (1843)
Overall Length in (mm)	37 (951)	37 (951)	37 (951)	37 (951)	37 (951)	37 (951)	37 (951)
Maximum Throw ft (m)	40 (12)	40 (12)	40 (12)	40 (12)	40 (12)	40 (12)	40 (12)
Weight - lb (kg)	1021 (463)	1054 (478)	1105 (501)	1091 (495)	1142 (518)	1128 (512)	1184 (535)
Required Hydraulics	Std Flow	Std Flow	Std Flow	High Flow XPS	High Flow XPS	XE/XHP	XE/XHP
Interface Type	SSL Coupler	SSL Coupler	SSL Coupler	SSL Coupler	SSL Coupler	SSL Coupler	SSL Coupler
Part Number	580-0607	546-4485	545-8977	546-4509	546-4504	585-5465	585-5467
Price	\$	\$	\$	\$	\$	\$	\$

SNOW ATTACHMENTS | 2021

SNOW PERFORMANCE KIT (Coming Soon—Fall 2021)

SNOW PERFORMANCE KIT	
Part Number	546-4522
Price	\$

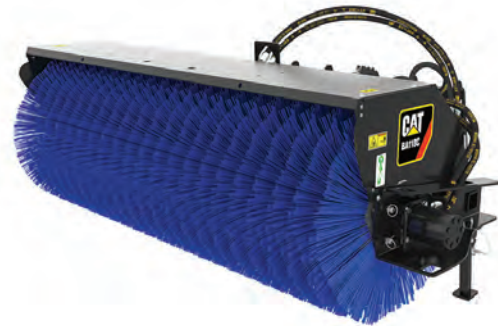


Hydraulic and manual Cat angle brooms

for Skid Steer Loaders, Multi Terrain Loaders, Compact Track Loaders, Backhoe Loaders, Compact Wheel Loaders and Small Wheel Loaders are ideal for clearing parking lots, industrial plants, mill yards, airport runways, streets, driveways and lanes.



BA118C
50% Poly / 50% Wire Bristles



BA118C
Optional: 100% Poly Cold Blue Bristles
**Cold weather kits for snow removal.
These kits are half of a full set; order two for a full set.*



BA25
50% Poly / 50% Wire Bristles
****BA25 and BA30 require hook group
and quick disconnect kit.**

ANGLE BROOMS	SSL / CTL / CWL	
MODEL	BA118C	BA118C
Width - in (mm)	104 (2637)	104 (2637)
Sweeping Width - in (mm)	83 (2119)	83 (2119)
Height - in (mm)	36 (918)	36 (918)
Length - in (mm)	69 (1741)	69 (1741)
Weight - lb (kg)	906 (411)	955 (433)
Required Hydraulics	STD Flow	STD Flow
Angling	Manual	Hydraulic
Interface Type	SSL Coupler	SSL Coupler
Voltage	—	12V
Part Number	448-5660	448-5670
Price	\$	\$
Bristles (poly cold blue)	562-7623*	562-7623*
Price	\$	\$

BA25 and BA30 QUICK DISCONNECT KITS			
MACHINE	BHL, CWL, SWL	CWL	SWL
Description	Kit, QD, Push, Size 12	Kit, QD, Twist, Size 12	Kit, QD, Twist, Size 19
Part Number	196-4191**	455-7380**	457-4632**
Price	\$	\$	\$

SNOW ATTACHMENTS | 2021

ANGLE BROOMS				SWL
MODEL	BA25	BA25	BA25	BA30
Width - in (mm)	106 (2700)	106 (2700)	106 (2700)	126 (3200)
Sweeping Width - in (mm)	98 (2500)	98 (2500)	98 (2500)	115 (2909)
Height - in (mm)	51 (1300)	51 (1300)	51 (1300)	62 (1579)
Length - in (mm)	70 (1770)	70 (1770)	70 (1770)	—
Weight - lb (kg)	1014 (460)	1014 (460)	1014 (460)	1100 (499)
Required Hydraulics	STD Flow	STD Flow	STD Flow	STD Flow
Angling	Hydraulic	Hydraulic	Hydraulic	Hydraulic
Interface Type	IT Coupler	ISO	Fusion	Fusion
Voltage	24V	24V	24V	24V
Part Number	157-5880	487-8499	487-8495	497-9455
Price	\$	\$	\$	\$

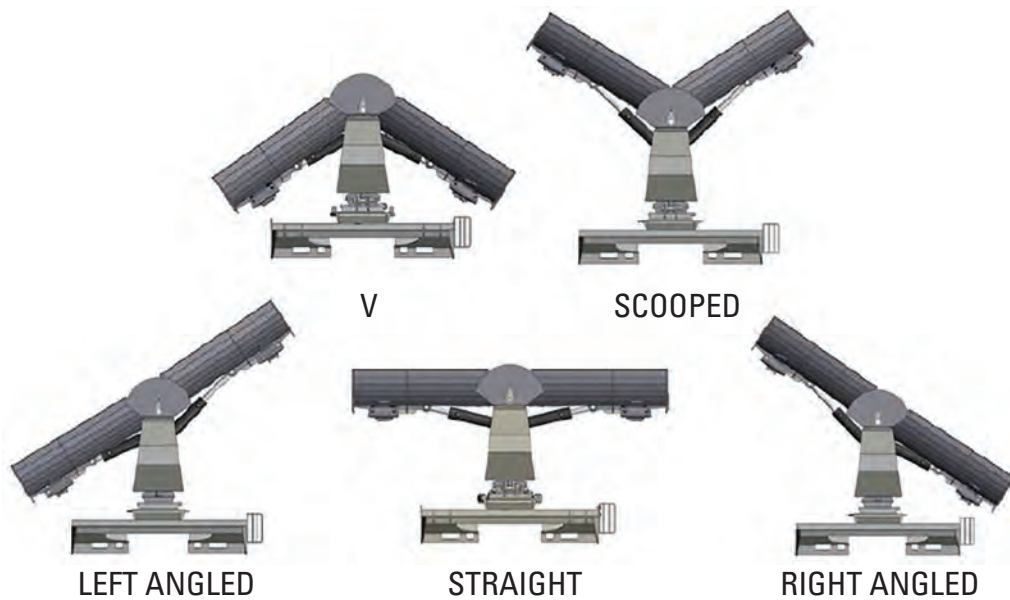
ANGLE BROOMS	CWL / BHL / SWL
MODEL	BA25
Width - in (mm)	106 (2700)
Sweeping Width - in (mm)	98 (2500)
Height - in (mm)	51 (1300)
Length - in (mm)	70 (1770)
Weight - lb (kg)	1014 (460)
Required Hydraulics	STD Flow
Angling	Manual
Interface Type	IT Coupler
Voltage	N/A
Part Number	164-8485
Price	\$

ANGLE BROOMS	BHL
MODEL	BA25
Width - in (mm)	106 (2700)
Sweeping Width - in (mm)	98 (2500)
Height - in (mm)	51 (1300)
Length - in (mm)	70 (1770)
Weight - lb (kg)	1014 (460)
Required Hydraulics	STD Flow
Angling	Hydraulic
Interface Type	IT Coupler
Voltage	12V
Part Number	164-8486
Price	\$

HOOK GROUPS

COMPATIBILITY	BA25, BA30, BP25	BA25, BA30, BP25	BA25, BA30, BP25	BA25, BA30, BP25	BA22 and BP22 only	BA25, BA30, BP25
Part Name	Hook, Broom, IT	Hook, Broom, Fusion	Hook, Broom, IT38	Hook, Broom, ISO (L50)	Hook, Broom, SSL	Hook, Broom, HPL (L35)
Part Number	487-8490	497-9496	487-8481	487-8480	329-8634	329-8631
Price	\$	\$	\$	\$	\$	\$

MULTI V-PLOWS



MULTI V-PLOWS		SSL / CTL / CWL / SWL		
MODEL	5 ft (1.5 m)	7 ft (2.1 m)	10 ft (3 m)	12 ft (3.7 m)
Straight Width - in (mm)	60 (1524)	84 (2134)	127 (3142)	145 (3680)
Length - in (mm)	52 (1320)	52 (1320)	48.5 (1231)	56 (1409)
Overall Height - in (mm)	33 (826)	33 (826)	49.5 (1257)	58 (1479)
Weight - lb (kg)	639 (290)	939 (426)	2590 (1175)	3781 (1715)
Required Hydraulics	Std Flow	Std Flow	4th Function	4th Function
Interface Type	SSL Coupler	SSL Coupler	IT Coupler	Fusion Coupler
Part Number	542-7309	542-7310	396-2552	489-7692
Price	\$	\$	\$	\$

Cat snow wings are designed with versatility in mind. With independently controlled wings and angling capability, the attachment can be configured to suit the needs of any job. The snow wing can continue to adapt to ever changing needs by being able to hydraulically configure for plowing, pushing, and back dragging to enable cleaning. Applications include maintaining roadways, sidewalks and other passages for safe passage in winter conditions.



SNOW WINGS

SNOW WINGS	SSL / CTL / CWL	
	8 ft (2.4 m)	9 ft (2.8 m)
MODEL		
Working Width - Wings Open - in (mm)	161 (4083)	174 (4425)
Working Width - Wings Closed - in (mm)	96 (2445)	108 (2750)
Overall Height - in (mm)	36 (915)	36 (915)
Length - in (mm)	67 (1705)	67 (1705)
Weight - lb (kg)	1751 (794)	1821 (826)
Wing Rotation	180°	180°
Angling - Left /Right of Center	35°	35°
Required Hydraulics	Std Flow	Std Flow
Interface Type	SSL Coupler	SSL Coupler
Part Number	572-3142	572-3143
Price	\$	\$



Cat snow wings provide customers complete control over their snow moving operation. Independently controllable wings on each end of the plow allow the operator to change between multiple configurations on the fly.

SNOW WINGS		SWL
MODEL	8 ft (2.4 m)	9 ft (2.8 m)
Working Width - Wings Open - in (mm)	161 (4083)	108 (2750)
Working Width - Wings Closed - in (mm)	96 (2445)	114 (2596)
Overall Height - in (mm)	36 (915)	36 (915)
Length - in (mm)	67 (1705)	67 (1705)
Weight - lb (kg)	1751 (794)	1820 (826)
Wing Rotation	180°	180°
Angling - Left /Right of Center	35°	35°
Required Hydraulics	3rd Function	3rd Function
Interface Type	Fusion Coupler	Fusion Coupler
Part Number	572-3142	572-3143
Price	\$	\$



SNOW WING CURB RUNNER KIT

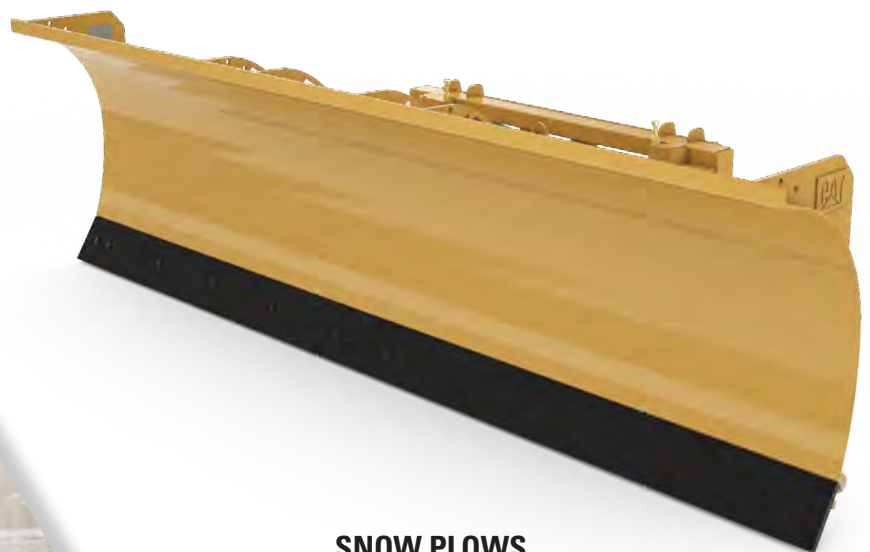
Part Number	602-7948*
Price	\$

***CURB RUNNER KIT IS OPTIONAL**
Kit part number: 602-7948



Cat snow plows are designed for snow removal applications in parking lots, driveways, airport runways and storage lots. The design of the plow scrapes the surface and can angle to windrow material to one side. The trip edge system protects your machine and tool from unseen obstacles by retracting when contacting objects such as a manhole cover or parking features.

SNOW PLOWS	SSL / CTL / CWL				
	6 ft (1.8 m)	7 ft (2.1 m)	8 ft (2.4 m)	9 ft (2.7 m)	10 ft (3 m)
Width - in (mm)	72 (1826)	84 (2134)	96 (2435)	108 (2743)	120 (3045)
Overall Height - in (mm)	32 (800)	32 (800)	32 (800)	32 (800)	32 (800)
Blade Height - in (mm)	31 (797)	31 (797)	31 (797)	31 (797)	31 (797)
Length - in (mm)	49 (1247)	49 (1247)	49 (1247)	49 (1247)	49 (1247)
Weight - lb (kg)	992 (450)	1052 (477)	1107 (502)	1162 (527)	1217 (552)
Trip Edge Type- in (mm)	Steel	Steel	Steel	Steel	Steel
Trip Edge Height- in (mm)	5.3 (134)	5.3 (134)	5.3 (134)	5.3 (134)	5.3 (134)
Required Hydraulics	Std Flow	Std Flow	Std Flow	Std Flow	Std Flow
Interface Type	SSL Coupler	SSL Coupler	SSL Coupler	SSL Coupler	SSL Coupler
Part Number	481-3666	481-3667	481-3668	481-3669	481-3670
Price	\$	\$	\$	\$	\$



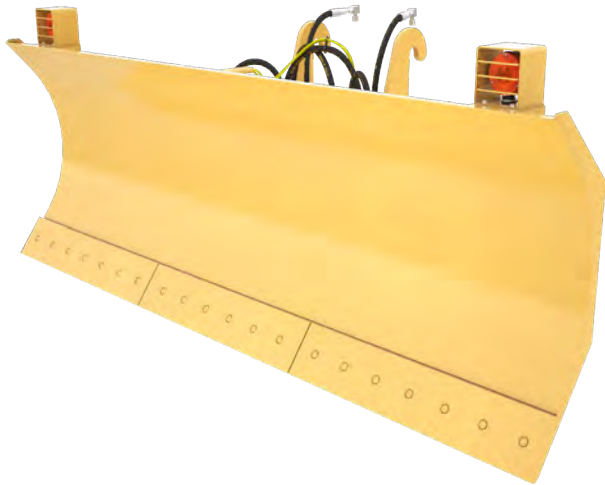
SNOW PLOWS

SNOW PLOWS



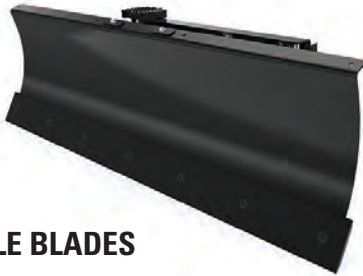
SNOW ATTACHMENTS | 2021

SNOW PLOWS (CONT.)				BHL / CWL / SWL		
MODEL	9 ft (2.7 m)	10 ft (3 m)	12 ft (3.7 m)	10 ft (3 m)	12 ft (3.7 m)	14 ft (4.3 m)
Width - in (mm)	108 (2743)	120 (3048)	144 (3658)	120 (3048)	144 (3658)	168 (4267)
Overall Height - in (mm)	41 (1051)	41 (1051)	41 (1051)	41 (1065)	41 (1065)	41 (1065)
Blade Height - in (mm)	35 (888)	35 (888)	35 (888)	42 (1073)	42 (1073)	42 (1073)
Length - in (mm)	55 (1385)	55 (1385)	55 (1385)	70 (1775)	70 (1775)	70 (1775)
Weight - lb (kg)	1885 (855)	1989 (902)	2180 (989)	3062 (1389)	3362 (1525)	3362 (1525)
Trip Edge Type	Steel	Steel	Steel	Steel	Steel	Steel
Trip Edge Height- in (mm)	7.6 (194)	7.6 (194)	7.6 (194)	7.6 (194)	7.6 (194)	7.6 (194)
Required Hydraulics	Std Flow	Std Flow	Std Flow	Std Flow	Std Flow	Std Flow
Interface Type	IT Coupler	IT Coupler	IT Coupler	Fusion Coupler	Fusion Coupler	Fusion Coupler
Machine	BHL	BHL	BHL	91X / SWL	SWL	SWL
Part Number	481-3671	481-3672	481-3673	479-8098	479-8108	479-8118
Price	\$	\$	\$	\$	\$	\$



**INDUSTRIAL
SNOW PLOWS**

INDUSTRIAL SNOW PLOWS		CWL / SWL
MODEL	10 ft (3.1 m)	12 ft (3.7 m)
Width - in (mm)	122 (3106)	145 (3680)
Overall Height - in (mm)	46 (1173)	53 (1347)
Blade Height - in (mm)	40 (1020)	47 (1197)
Length - in (mm)	42 (1073)	50 (1269)
Weight - lb (kg)	2050 (930)	2932 (1330)
Required Hydraulics	Std Flow	Std Flow
Cutting Edge	Steel	Steel
Trip Edge	No	No
Interface Type	IT Coupler	Fusion Coupler
Machine	91X / 92X	SWL
Part Number	396-2548	489-7688
Price	\$	\$



ANGLE BLADES

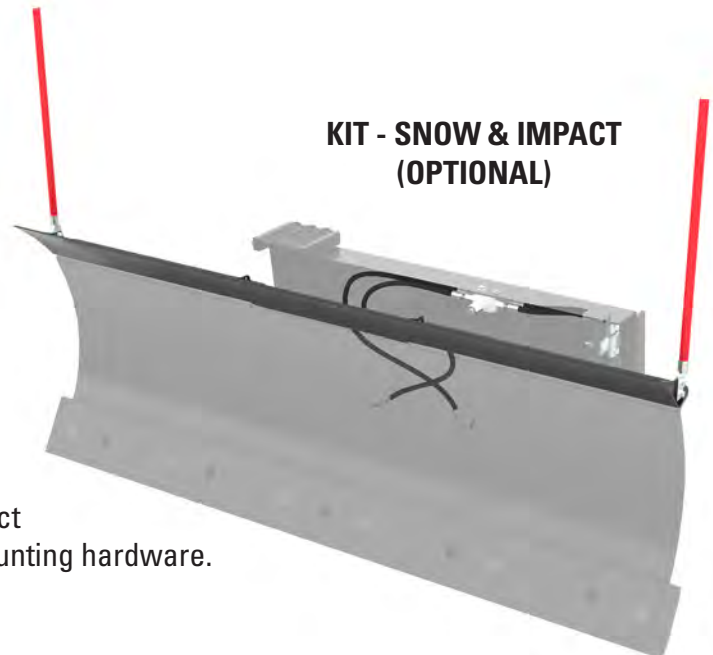
Cat angle blades are useful work tools in a wide range of applications for moving dirt, gravel, livestock waste and snow. They are also useful for finish grade work in construction and landscaping.

ANGLE BLADES		SSL / CTL / CWL	
MODEL	72 in (1829 mm)	84 in (2134 mm)	
Overall Blade Width - in (mm)	75 (1893)	87 (2198)	
Width Fully Angled - in (mm)	66 (1685)	77 (1949)	
Length - in (mm)	30 (753)	30 (753)	
Weight - lb (kg)	690 (313)	730 (331)	
Required Hydraulics	Std Flow	Std Flow	
Interface Type	SSL Coupler	SSL Coupler	
Part Number	177-1989	177-1990	
Price	\$	\$	
Kit - Snow & Impact	225-9522	225-9523	
Price	\$	\$	
Non-metallic Edges	165-8477	165-8478	
Price	\$	\$	



POLYETHYLENE NON-METALLIC EDGES (OPTIONAL)

Optional bolt-on, non-metallic edges reduces surface scratches on marring of concrete and asphalt surfaces.



KIT - SNOW & IMPACT (OPTIONAL)

Optional snow kit - snow & impact includes guard, markers and mounting hardware.

LIGHT MATERIAL BUCKETS



LIGHT MATERIAL BUCKETS WITH BOLT-ON CUTTING EDGE (CONT.)					SWL
Width - in (mm)	108 (2750)	108 (2750)	108 (2750)	108 (2750)	108 (2750)
Capacity - yd3 (m3)	4 (3)	4.6 (3.5)	5 (3.8)	5.5 (4.2)	5.5 (4.2)
Height - in (mm)	54 (1369)	57 (1448)	58 (1471)	61 (1538)	61 (1538)
Length - in (mm)	58 (1462)	62 (1565)	65 (1647)	68 (1735)	68 (1735)
Weight - lb (kg)	2732 (1239)	2904 (1317)	3062 (1389)	3175 (1440)	3175 (1440)
Interface Type	Pin On	Pin On	Pin On	Pin On	Pin On
Machine	924K, 926M, 930K/M	924K, 926M, 930K/M	924K, 926M, 930K/M	924K, 926M, 930K/M	924K, 926M, 930K/M
Part Number	452-7416	417-4905	450-0250	417-4942	417-4942
Price	\$	\$	\$	\$	\$

LIGHT MATERIAL BUCKETS WITH BOLT-ON CUTTING EDGE					SWL
Width - in (mm)	108 (2750)	108 (2750)	108 (2750)	108 (2750))	108 (2750)
Capacity - yd3 (m3)	4 (3)	4.6 (3.5)	5 (3.8)	5.5 (4.2)	6.5 (5)
Height - in (mm)	54 (1369)	57 (1449)	58 (1478)	61 (1538)	66 (1687)
Length - in (mm)	55 (1404)	59 (1506)	63 (1588)	66 (1676)	68 (1735)
Weight - lb (kg)	2690 (1220)	2873 (1303)	3016 (1368)	3172 (1439)	3300 (1497)
Interface Type	Fusion Coupler	Fusion Coupler	Fusion Coupler	Fusion Coupler	Fusion Coupler
Part Number	452-7417	417-4935	450-0252	417-4342	417-4950
Price	\$	\$	\$	\$	\$

LIGHT MATERIAL BUCKETS WITH BOLT-ON CUTTING EDGE (CONT.)					SWL
Width - in (mm)	108 (2750)	108 (2750)	108 (2750)	108 (2750)	108 (2750))
Capacity - yd3 (m3)	4.6 (3.5)	5 (3.8)	5.5 (4.2)	6.5 (5)	6.5 (5)
Height - in (mm)	57 (1448)	58 (1471)	61 (1538)	66 (1678)	66 (1687)
Length - in (mm)	62 (1565)	65 (1647)	68 (1735)	68 (1735)	68 (1735)
Weight - lb (kg)	2895 (1313)	3025 (1372)	3170 (1438)	3300 (1497)	3298 (1496)
Interface Type	Pin On	Pin On	Pin On	Pin On	Pin On
Machine	938K/M	938K/M	938K/M	938K/M	938K/M
Part Number	360-3332	450-0251	360-3333	417-4350	360-3334
Price	\$	\$	\$	\$	\$

LIGHT MATERIAL BUCKETS WITH BOLT-ON CUTTING EDGE						CWL
Width - in (mm)	100 (2550)	100 (2550)	100 (2550)	100 (2550)	100 (2550)	100 (2550)
Capacity - yd3 (m3)	3.3 (2.5)	3.9 (3.0)	4.6 (3.5)	3.3 (2.5)	3.9 (3.0)	4.6 (3.5)
Height - in (mm)	50 (1267)	55 (1404)	59 (1486)	50 (1267)	55 (1404)	59 (1486)
Length - in (mm)	56 (1427)	60 (1517)	65 (1647)	58 (1467)	58 (1472)	63 (1602)
Weight - lb (kg)	1748 (793)	1883 (854)	2017 (915)	1773 (804)	1909 (866)	2042 (926)
Interface Type	IT Coupler	IT Coupler	IT Coupler	ISO	ISO	ISO
Part Number	498-0031	498-0034	498-0037	498-0032	498-0035	498-0038
Price	\$	\$	\$	\$	\$	\$

LIGHT MATERIAL BUCKETS WITH BOLT-ON CUTTING EDGE (CONT.)			CWL / 91X
Width - in (mm)	100 (2550)	100 (2550)	100 (2550)
Capacity - yd3 (m3)	3.3 (2.5)	3.9 (3.0)	4.6 (3.5)
Height - in (mm)	50 (1267)	55 (1404)	59 (1486)
Length - in (mm)	57 (1443)	60 (1533)	66 (1663)
Weight - lb (kg)	1799 (816)	1936 (878)	2068 (938)
Interface Type	Pin On	Pin On	Pin On
Part Number	498-0033	498-0036	498-0039
Price	\$	\$	\$



LIGHT MATERIAL BUCKETS

LIGHT MATERIAL BUCKETS WITH BOLT-ON CUTTING EDGE (CONT.) **918 / 920**

Width - in (mm)	100 (2550)	100 (2550)	100 (2550)
Capacity - yd3 (m3)	3.3 (2.5)	3.9 (3.0)	4.6 (3.5)
Height - in (mm)	50 (1267)	55 (1402)	58 (1483)
Length - in (mm)	54 (1381)	58 (1471)	63 (1601)
Weight - lb (kg)	1799 (816)	1949 (884)	2081 (944)
Interface Type	Fusion Coupler	Fusion Coupler	Fusion Coupler
Part Number	560-0128	560-0129	560-0130
Price	\$	\$	\$



MATERIAL HANDLING BUCKETS

Located above the torque tube structural support, the honeycomb visibility section allows the operator to easily view the cutting edge to ensure accurate placement and loading.

MATERIAL HANDLING BUCKETS WITH BOLT-ON CUTTING EDGE **SSL / CTL / CWL**

Width - in (mm)	86 (2188)	98 (2493)	104 (2649)
Height - in (mm)	30 (757)	30 (757)	30 (757)
Length - in (mm)	41 (1031)	41 (1031)	41 (1031)
Capacity - yd3 (m3)	1.4 (1.07)	1.6 (1.25)	1.7 (1.33)
Weight - lb (kg)	805 (365)	882 (400)	922 (418)
Interface Type	SSL Coupler	SSL Coupler	SSL Coupler
Part Number	472-2546	472-2548	469-0774
Price	\$	\$	\$





2021 CAT SNOW SOLUTIONS

©2020 Caterpillar. All Rights Reserved. CAT, CATERPILLAR, LET'S DO THE WORK, their respective logos, "Caterpillar Corporate Yellow," the "Power Edge" and Cat "Modern Hex" trade dress as well as corporate and product identity used herein, are trademarks of Caterpillar and may not be used without permission.

AEXQ3132-00 (03-2021)
(GLOBAL) 