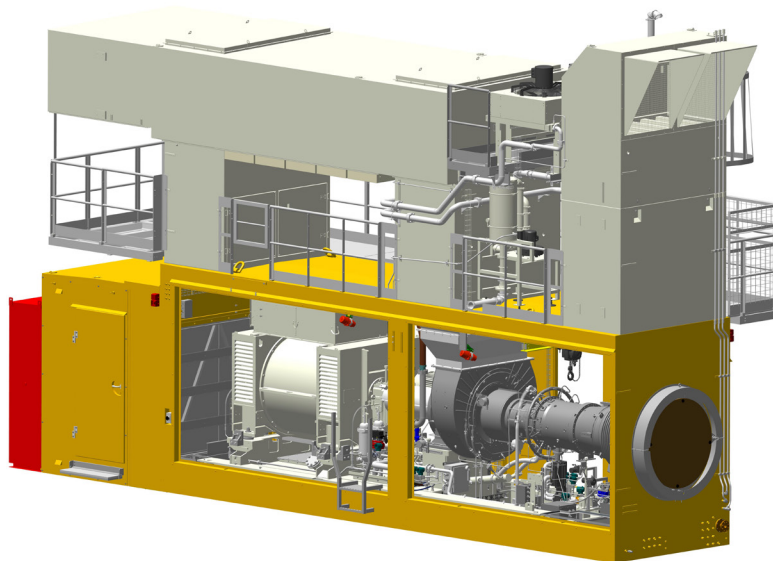


Powering the Future Through Sustainable, Innovative Energy Solutions



TURBINE DESIGN FEATURES

The Centaur® 40 is a lightweight industrial gas turbine designed to meet customer expectations across a variety of industries and applications. This gas turbine features high reliability and durability plus low life cycle costs. The Centaur 40 offers best-in-class low emissions through our SoLoNOx™ combustions technology with an expansive range of fuels. It has a proven record with over 50 years of service in locations around the globe.



DIGITAL INTEGRATION

InSight Platform™, Solar's proprietary digital technology foundation, is integrated throughout this product and ready to connect in the field. InSight Platform provides an entire ecosystem of tools and capabilities that provide real-time diagnostics and analytics to Solar's Customer Service network, and performance metrics to the equipment owners and operators.



PACKAGE DESIGN FEATURES

The power generation module (PGM) package consists of preassembled modules which are fully tested prior to leaving the factory. The PGM greatly reduces installation cost and commissioning time. All components are of standard design for high efficiency, flexible operation and ease of maintenance. Solar can provide scope to include only the turbine generator set or the entire power island.



CUSTOMER SERVICES

Solar's worldwide service organization is dedicated to your success. Our culture of customer care is the foundation of our commitment to the highest quality customer experience. With more than 60 service locations around the world, we are committed to ensuring reliable, efficient performance that precisely fits your requirements.

Powering the Future Through Sustainable, Innovative Energy Solutions

Performance

Output Power	3515 kWe
Heat Rate	12 910 kJ/kWe-hr (12,240 Btu/kWe-hr)
Exhaust Flow	68 365 kg/hr (150,715 lb/hr)
Exhaust Temp.	445°C (830°F)

Nominal rating – per ISO at 15°C (59°F), sea level, relative humidity 60%

No inlet/exhaust losses, no accessory losses

Natural gas fuel with LHV = 35 MJ/Nm³
(940 Btu/scf)

Engine efficiency: 27.9% (measured at generator terminals)

Capable of 20% H2 fuel content

Emissions capability: 15 ppm NOx

Operating ambient conditions: -20°C to 40°C

Steam production (saturated, unfired): 52.5 tons/hr

Ratings above are typical new equipment ratings.

Please contact Solar Turbines sales to obtain project specific data.

Package Dimensions

Length: 12.4 m (40' 6")

Width: 2.5 m (8' 2")

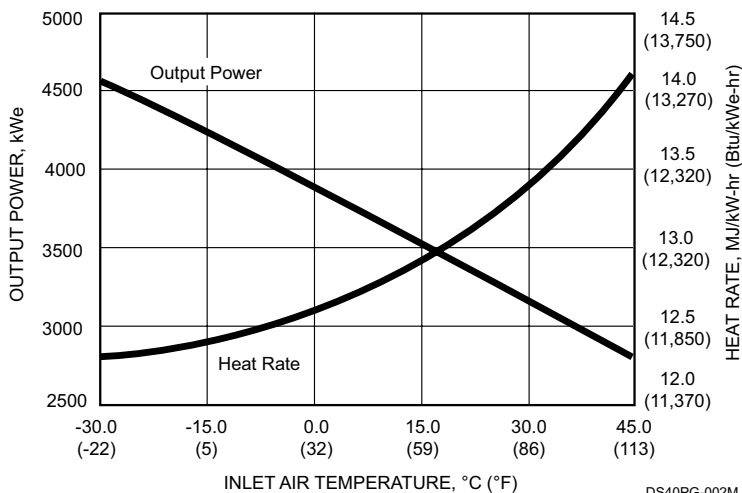
Turbine Enclosure Height: 3.4 m (11' 2")

Minimum Height with Filter: 7.6 m (25')

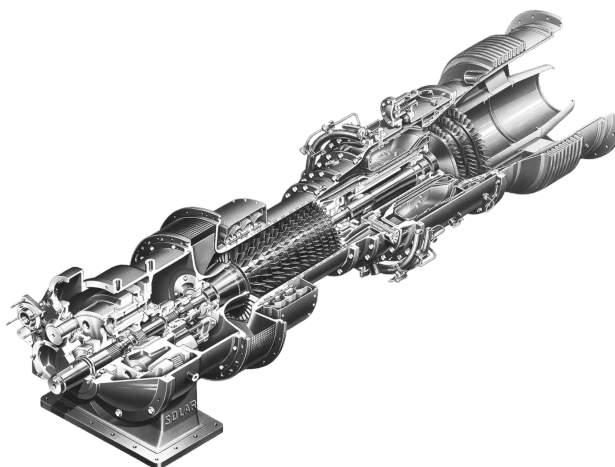
Package Weight, Approx: 50 200 kg (110,570 lb)

Weights and dimensions for compact filter configuration, dry weight

Available Power



DS40PG-002M



Solar Turbines Incorporated
P.O. Box 85376
San Diego, CA 92186-5376

Caterpillar is a trademark of Caterpillar Inc. Solar, Centaur, SoLoNOx and InSight Platform are trademarks of Solar Turbines Incorporated. Specifications subject to change without notice.
©2021 Solar Turbines Incorporated. All rights reserved.
DSPGM40/0221/EO

FOR MORE INFORMATION

Telephone: (+1) 619-544-5352
Email: infocorp@solarturbines.com
Internet: www.solarturbines.com

