



# EQUIPMENT PROTECTION PLAN

# CONTENTS

- 01.** What are Equipment Protection Plans (EPP)?
- 02.** EPP for New Machines
- 03.** EPP Coverage Options for New Machines
- 04.** EPP for Used Cat Machines
- 05.** Individual Used EPP Programs
- 06.** Cat Certified Used EPP
- 07.** Cat Certified Rebuild EPP
- 08.** Benefits of EPP
- 09.** How Does EPP Benefit Me as the Customer?

# WHAT ARE EQUIPMENT PROTECTION PLANS (EPP)?

An EPP is an extended protection product that protects you against defects in Cat material and manufacturer workmanship beyond the expiration of your original standard machine warranty. Repairs must be completed by a Cat authorized dealer.

No matter where your business or machinery is located, an EPP ensures your dealer service team will send out a Cat® certified technician to diagnose and repair your equipment. Working with your local Cat dealer to secure an EPP can help you manage costs, improve long-term financial stability and give you the peace of mind you deserve for your business.



# EPP FOR NEW MACHINES

Machines currently under the first year of standard machine warranty are eligible for the New Machine EPP program through your local Cat dealership. An EPP provides you with coverage options that fit your needs. By offering multiple levels, you can find the right coverage that aligns with the way you use your equipment.

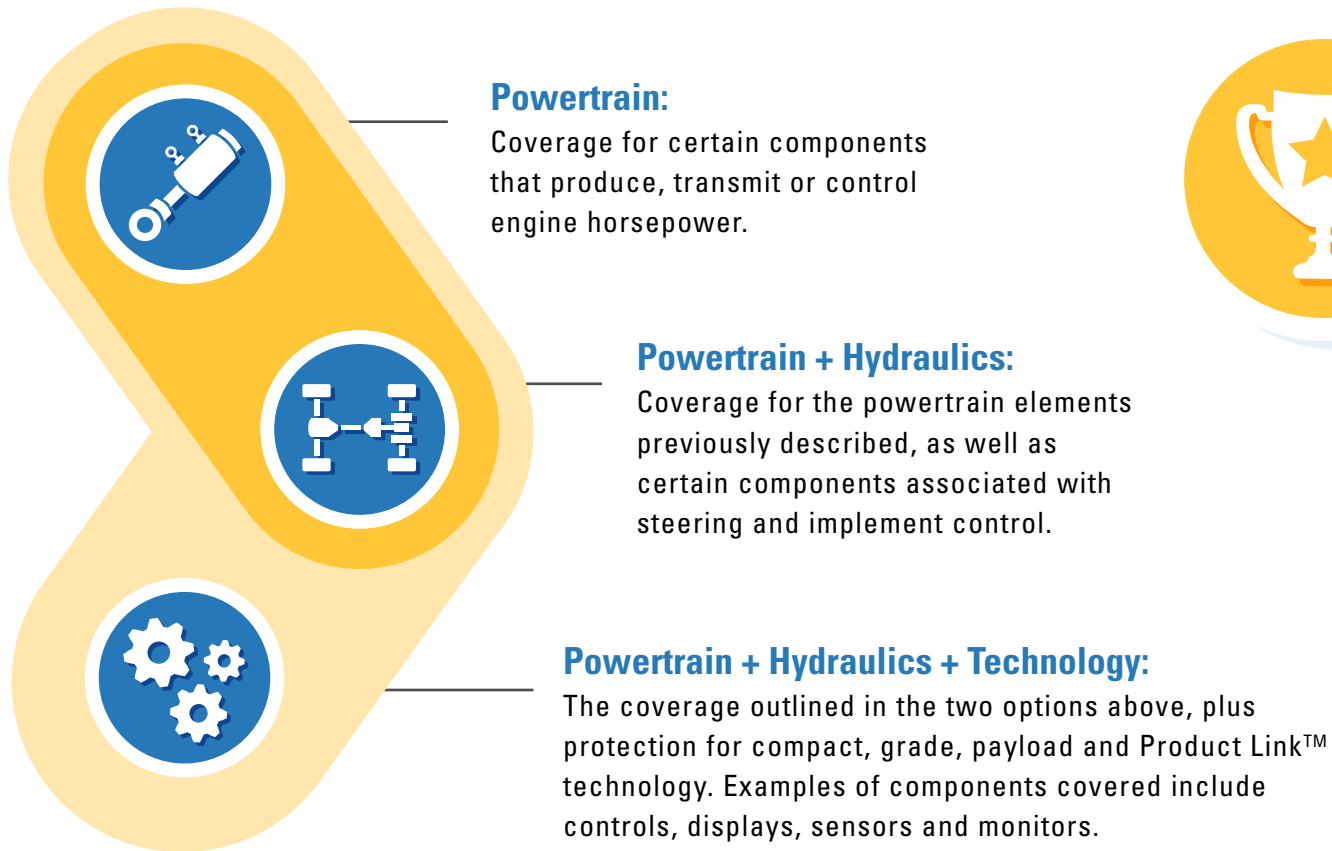


## With New Machine EPP, here are some important things to keep in mind:

- ✓ New Machine EPP is sold by dealers and backed by Caterpillar.
- ✓ Each New Machine EPP is linked to an individual machine serial number.
- ✓ Transfers with the machine when you sell it in the same region the EPP was purchased.
- ✓ Machines must be maintained according to Operation & Maintenance Manual (OMM) guidelines to remain eligible.
- ✓ New machines must be enrolled in the program within the first 12 months after purchase.

# EPP COVERAGE OPTIONS FOR NEW MACHINES

You have multiple levels of coverage for new Cat machines



## Premier:

This option, available only for new machines, offers the coverage outlined in Powertrain+Hydraulics+Technology, while also covering certain electrical and structural components.



For a better illustration on comparing the coverage options, visit [cat.com](https://www.cat.com)

# EPP FOR USED CAT MACHINES

The Used Machine EPP programs offer simple pricing and enrollment processes, along with multiple coverage options.

**You have multiple coverage options for used Cat machines**



## **1. Individual Used Program:**

Underwriting is based on on a specific machine model, serial number, current hours, age and selected coverage terms.



## **2. Cat Certified Used (CCU):**

Underwriting is based on CCU qualifications and selected coverage terms. CCU EPP utilizes transaction-based pricing; the premium is a percent of the used machine sale price.



## **3. Certified Rebuild Program:**

Underwriting is based on Cat Certified Rebuild qualifications and selected coverage terms.

# INDIVIDUAL USED EPP PROGRAMS

The Individual Used EPP covers eligible used machines outside of the standard machine warranty. Contact your local Cat dealer to learn more about eligible used Cat machines.

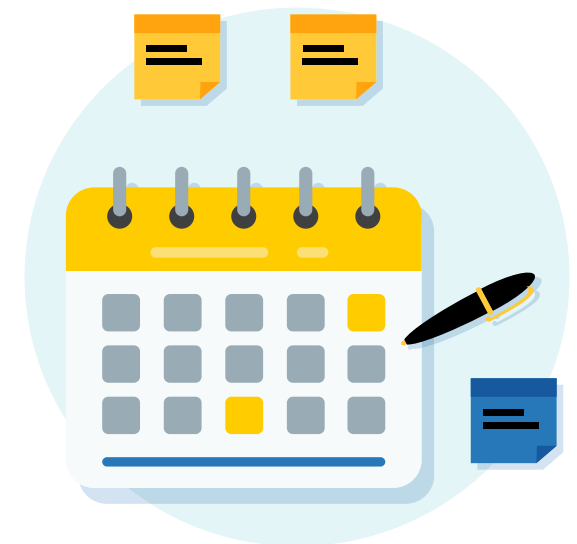
## The Benefits of EPP:



Powertrain and Powertrain + Hydraulics coverage options designed to provide reimbursement for qualified failure repair costs.



Coverage priced and rated individually for each specific machine, based on the age and hours of that machine.



Terms ranging from 3 to 60 months and from 250 to 10,000 hours.

# CAT CERTIFIED USED EPP

Cat Certified Used (CCU) EPP machines are selected, inspected and serviced to a higher standard. Your dealer takes low-hour, well-maintained Cat machines and inspects them inside and out. The dealer service technicians use only genuine Cat parts for service, complete all the required maintenance and connect the telematics (if equipped) for fast, easy access to hours, location and diagnostics.

## The benefits include:

- ▶ Coverage options designed specifically for CCU machines.
- ▶ Programs offering simple pricing and enrollment process.
- ▶ EPP coverage options help manage risks.



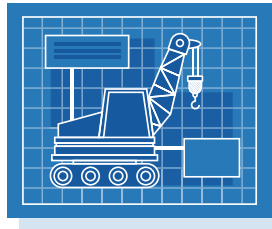
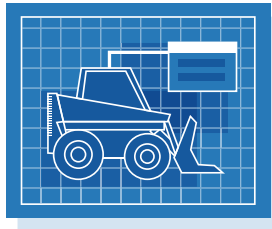
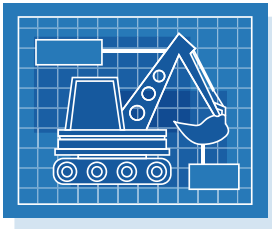


# CAT CERTIFIED REBUILD

Cat Certified Rebuild machines are completely disassembled and rebuilt from the ground up to include all Cat product updates. More than 350 tests and inspections are conducted to deliver a high level of quality and a like-new condition.

## Specific EPP programs for Cat Certified Rebuild equipment include:

- ▶ Cat Certified Rebuild (CCR).
- ▶ Cat Certified Powertrain Rebuild (CPT).
- ▶ Cat Certified Machine Component Rebuild (CMCR).
- ▶ Cat Certified Hydraulic Rebuilds (CHR) for Excavators Only.

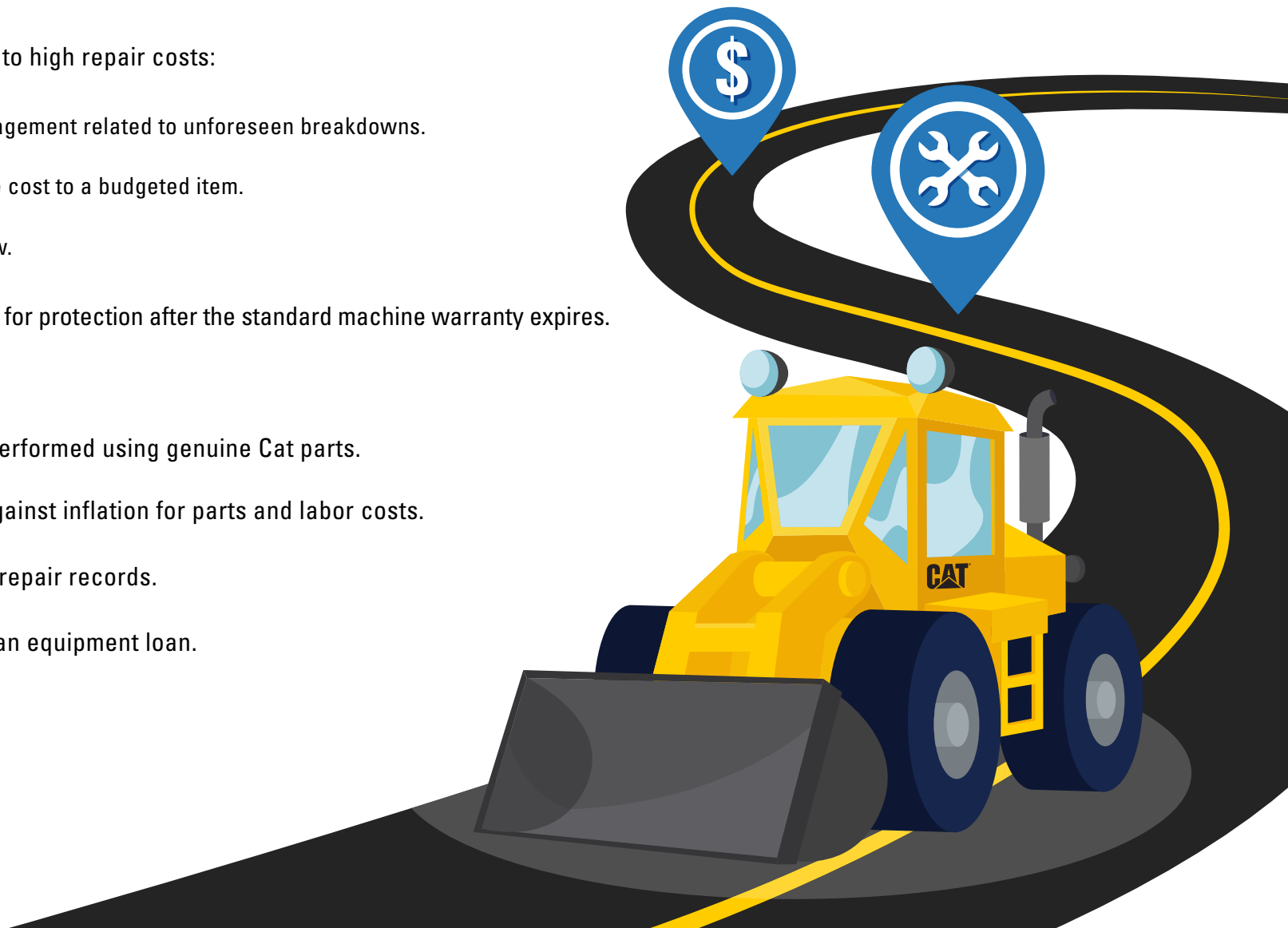


## Multiple EPP coverage options that help manage the risks associated with rebuilt machines:

- ▶ **Powertrain:** Coverage for certain components that produce, transmit or control engine horsepower.
- ▶ **Powertrain + Hydraulics:** Coverage for the powertrain elements previously described, as well as certain components associated with steering and implement control.
- ▶ **Components:** Coverage for certain major components such as engine, transmission/torque converter, drive axles, differentials and final drives.
- ▶ **Hydraulics (Excavators Only):** Coverage for certain components associated with steering and implement control.

# BENEFITS OF EPP

- ▶ Reduce concerns tied to high repair costs:
  - └ Improve risk management related to unforeseen breakdowns.
  - └ Convert a variable cost to a budgeted item.
  - └ Stabilize cash flow.
- ▶ Longer coverage terms for protection after the standard machine warranty expires.
- ▶ Minimize downtime.
- ▶ Knowing repairs are performed using genuine Cat parts.
- ▶ Provides protection against inflation for parts and labor costs.
- ▶ Includes documented repair records.
- ▶ Can be financed with an equipment loan.



# HOW DOES EPP BENEFIT ME AS THE CUSTOMER?



**An EPP makes sense for dealers and customers alike. Take advantage of these benefits with EPP:**

- ▶ Managing the cost of unforeseen breakdowns.
- ▶ Maximizing the usable life of your investment.
- ▶ Increasing machine resale value.\*  
\*The resale value of your equipment is not guaranteed to increase
- ▶ Transferability when selling the machine.
- ▶ Keeping Caterpillar quality throughout machine life cycle.
- ▶ Caterpillar builds it, Caterpillar protects it and your Cat dealer services it, using quality Cat parts.

# Disclaimer:

This marketing tool does not represent a contract or obligation of any kind between Caterpillar Inc., its subsidiaries or affiliates, and the equipment owner. All graphics and lists in this marketing tool are provided solely for general information purposes and are not intended to be a solicitation or an offer to sell any product or service. Terms, conditions, and/or exclusions may apply. For terms, conditions, and/or exclusions of Equipment Protection Plans, **please contact** your dealer for further details.

© 2020 Caterpillar. All Rights Reserved. CAT, CATERPILLAR, LET'S DO THE WORK, their respective logos, "Caterpillar Yellow", the "Power Edge" and Cat "Modern Hex" trade dress as well as corporate and product identity used herein, are trademarks of Caterpillar and may not be used without permission.



[cat.com](http://cat.com)