

M316

WHEELED EXCAVATOR



Engine Power (ISO 14396:2002)	110 kW (148 hp)
Operating Weight Maximum	16 510 kg (36,400 lbs)

Cat® C4.4 engine meets U.S. EPA Tier 4 Final and EU Stage V emission standards.



THE NEW CAT® M316

BOOSTING EFFICIENCY

The Cat M316 Wheeled Excavator increases your productivity with more comfort in the cab, full tiltrotator integration, and easy-to-use controls. Lower fuel and maintenance costs put money back in your pocket.



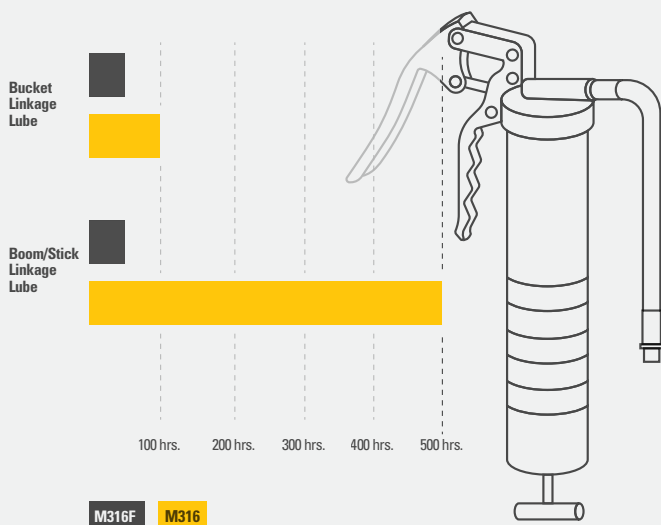
NEXT GENERATION WHEELED EXCAVATORS

The new wheeled excavators match your performance needs to bring you:

- + LOWER OPERATING AND MAINTENANCE COSTS
- + INCREASED OPERATOR EFFICIENCY AND VISIBILITY
- + MORE IN-CAB COMFORT



DO MORE WORK WITH EXTENDED INTERVALS



MAXIMIZE PERFORMANCE

Work faster with up to 14% more swing torque with lower fuel and diesel exhaust fluid (DEF) consumption. Tiltrotator integration gives you more versatility to complete more tasks faster with one machine.

ENHANCED CAB COMFORT

Operate comfortably with the ergonomic control layout and cab options. Get better visibility with rear- and side-view cameras and an optional 360° machine view system.

UP TO 10% MAINTENANCE SAVINGS¹

Fewer maintenance costs, combined with 100% daily ground-level maintenance and extended service intervals, increase uptime and keep overall costs down.

¹ Compared to the M316F

CAT EQUIPMENT MANAGEMENT TECHNOLOGY TAKES THE GUESSWORK OUT OF MANAGING YOUR EQUIPMENT

Cat Equipment Management telematics technology helps take the complexity out of managing your jobsites by gathering data generated by your equipment, materials, and people and serving it up to you in customizable formats.



PRODUCT LINK™

Product Link™ collects data automatically and accurately from your assets – any type and any brand. Information such as location, hours, fuel usage, productivity, idle time, maintenance alerts, diagnostic codes, and machine health can be viewed online through web and mobile applications.



VISIONLINK®

Access information anytime, anywhere with VisionLink®. Use it to make informed decisions that boost productivity, lower costs, simplify maintenance, and improve safety and security on your jobsite. With different subscription level options, your Cat dealer can help you configure exactly what you need to connect your fleet and manage your business without paying for extras you don't want. Subscriptions are available with cellular or satellite reporting (or both).



Remote Services is a suite of technologies that improve your jobsite efficiency.

Remote troubleshoot allows your Cat dealer to perform diagnostic testing on your connected machine remotely, pinpointing potential issues while the machine is in operation. Remote troubleshoot helps ensure the technician arrives with the correct parts and tools the first time, eliminating additional trips to save you time and money.

Remote flash updates onboard software to potentially reduce update time by as much as 50%. You can initiate the update when convenient, increasing your overall operating efficiency.

The **Cat app** helps you manage your assets – at any time – right from your smartphone. You can see your fleet location, hours, and other information. You will get critical alerts for required maintenance, and you can even request service from your local Cat dealer.

BOOST YOUR PRODUCTIVITY BY UP TO 45%

WITH SIMPLE-TO-USE INTEGRATED CAT® TECHNOLOGY



OPTIONAL TECHNOLOGIES INCLUDE:



CAT GRADE WITH 2D

Cat Grade with 2D helps operators reach grade faster. Onboard processors and sensors provide real-time guidance on distance to grade without guesswork. Work safer with fewer ground personnel needed to check the work area for obstacles or grade. All Cat Grade systems are compatible with radios and base stations from Trimble.



CAT PAYLOAD

Cat Payload helps you achieve precise load targets to improve your operating efficiency. Pick up a load of material – with a bucket and thumb combination or grapple and clamshell attachments – and get a real-time weight estimate without swinging.

Cat technology gives you the edge. Operators of all experience levels will dig, load, and grade with more confidence, speed, and accuracy to save time and money.

CAT TECHNOLOGY MORE WORK, LESS TIME



GET JOBS DONE FASTER WITH LESS REWORK

Cat Grade with Advanced 2D lets you create and edit grade designs with ease on a second high-resolution 240 mm (10 in.) touchscreen monitor. Cat Grade with 3D adds real-time, pinpoint positioning using GPS and GLONASS. Already invested in a grade infrastructure? You can install grade systems from Trimble.

Get in and out of the cab more easily with the tilt-up left console. Deluxe and premium cab options offer supreme comfort from a heated/cooled seat to automatic temperature control.

CAB TAKES THE HARD OUT OF WORK



ERGONOMIC CONTROL LAYOUT

Controls are positioned to reduce fatigue and straining movements to help keep you operating at your full potential.

REDUCED CAB VIBRATIONS

Feel more comfortable in the cab while you work with reduced cab vibrations from advanced viscous mounts.

BLUETOOTH® CONNECTION

Bluetooth-integrated radio allows for seamless mobile phone connection to listen to music, podcasts, and hands-free calling.

SMARTBOOM™

SmartBoom™ lets the boom freely travel up and down without using any pump flow, so operators can focus on attachment control and have a smoother cycle.

AUTO AXLE LOCK WITH AUTO BRAKE

The axle locks at zero speed and unlocks when the travel pedal is activated. The axle can also be manually locked with a button on the right-hand console. Auto axle brake lock automatically activates the service brake and locks axle oscillation. It is activated when the travel pedal is in neutral and the machine speed is near zero.

RIDE CONTROL

The ride control system lets you travel faster over rough terrain with improved ride quality. Accumulators act as shock absorbers to help make your journey smoother.

JOYSTICK STEERING

Keep both hands on the joysticks while simultaneously moving the boom and stick and repositioning the machine with the slider switch on the right joystick.



WORK MORE EFFICIENTLY
WITH LESS STRESS

EXPAND YOUR JOBSITE CAPABILITIES

WITH MORE SWING TORQUE AND FUEL EFFICIENCY

An increase in swing torque makes traveling, swinging, and working on slopes easy. Backfill trenches and move around your jobsite faster than before – allowing you to be more productive and finish jobs quickly. An advanced hydraulic system provides the optimum balance of power and efficiency while giving you the control you need for precise digging requirements.



LONGER SERVICE INTERVALS

The in-cab monitor tracks filter life and machine intervals, so you always know when it's time for regular machine service.

GROUND-LEVEL ACCESS

Complete your daily machine checks entirely from the ground, minimizing the need to access the upper platform.

NEW FILTERS

Two levels of filtration protect your engine from dirty diesel. The new hydraulic oil filter improves filtration performance and lasts up to 50% longer than previous filter designs.





KEYLESS PUSH START

Start the engine with the push-to-start button or using the unique operator ID function.



MACHINE SETTINGS

Access the operator manual at your fingertips as well as the power mode selector to keep productivity while using less fuel.



JOYSTICK PREFERENCES

Program your preferred power mode and joystick preferences with your operator ID. Once you enter in your operator ID, the excavator remembers your settings each time. Make operating easier with the touch of a joystick button. Additional auxiliary relays allow you to power on or turn off a CB radio, beacon light, and even a dust suppression watering system without taking your hands off the joysticks.



TOUCHSCREEN MONITOR

Use the standard 254 mm (10-in) touchscreen monitor to adjust your heating/cooling setting for more comfort or to view your machine information.

LOOK OUT FOR YOUR PEOPLE AND YOUR EQUIPMENT

SAFETY FEATURES



STAY SAFE EVERY DAY

FACT:

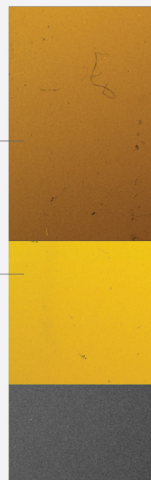
#1 cause of construction accidents: **FALLS***

49% OF FALLS RESULT IN SERIOUS INJURY

30% OF FALLS RESULT IN DEATH

100% **GROUND-LEVEL MAINTENANCE** HELPS PREVENT FALLS

FALLS



*<https://www.ncbi.nlm.nih.gov/pmc/articles/PMC4962179/>

Daily maintenance checks can be performed with 100% of the points accessible from ground level, making maintenance faster, easier, and safer. Standard LED lights gives you a better view of your jobsite.

- + ENJOY BETTER VISIBILITY INTO TRENCHES, IN EACH SWING DIRECTION, AND BEHIND YOU. SMALLER CAB PILLARS, LARGER WINDOWS, AND A FLAT ENGINE HOOD DESIGN LOWER OBSTRUCTION TO YOUR VIEW ALONG WITH THE OPTIONAL 360° VIEW SYSTEM. REARVIEW AND SIDE-VIEW CAMERAS ARE AVAILABLE FOR A BETTER VIEW AROUND YOU.
- + THE STANDARD SOUND SUPPRESSION ROLLOVER PROTECTIVE STRUCTURE (ROPS) CAB MEETS ISO 12117-2:2008 REQUIREMENTS AND HELPS TO BLOCK THE NOISE TO STAY FOCUSED ON THE JOB.
- + THE SERVICE PLATFORM DESIGN PROVIDES EASY, SAFE, AND QUICK ACCESS TO UPPER PLATFORM. THE STEPS USE ANTI-SKID PUNCH PLATES TO PREVENT SLIPPING.
- + OPTIONAL 2D E-FENCE IS INTEGRATED RIGHT OUT OF THE FACTORY TO PREVENT THE EXCAVATOR FROM MOVING OUTSIDE OPERATOR DEFINED SETPOINTS.

INCREASE PRODUCTIVITY AND VERSATILITY WITH CAT ATTACHMENTS

You can easily expand the performance of your machine by utilizing any of the variety of Cat attachments. Each Cat attachment is designed to fit the weight and horsepower of Cat wheeled excavators for improved performance, safety, and stability.

BUCKETS



GRAPPLES



HYDRAULIC HAMMERS



QUICK COUPLER



VIBRATORY PLATE COMPACTORS



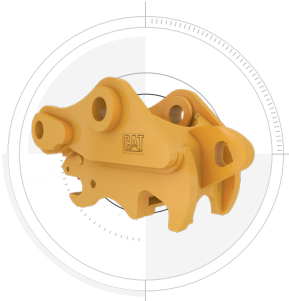
MULCHERS



TILTROTATOR



PIN GRABBER COUPLER



TECHNICAL SPECIFICATIONS

See cat.com for complete specifications.

ENGINE		
Engine Model	Cat® C4.4	
Engine Power – ISO 14396:2002	110 kW	148 hp
Net Power – ISO 9249:2007	105 kW	141 hp
Bore	105 mm	4 in
Stroke	127 mm	5 in
Displacement	4.4 L	268.5 in ³
<ul style="list-style-type: none"> • Net power advertised is the power available at the flywheel when engine is equipped with fan, air cleaner, CEM exhaust gas aftertreatment, alternator, and cooling fan running at intermediate speed. • Recommended for use up to 3000 m (9,843 ft) altitude with engine power derating above 3000 m (9,843 ft). • Rated speed 2,000 rpm. 		

HYDRAULIC SYSTEM		
Main System – Maximum Flow – Implement	275 L/min	73 gal/min
Maximum Pressure – Equipment	35 000 kPa	5,076 psi
Maximum Pressure – Travel	35 000 kPa	5,076 psi
Maximum Pressure – Swing	35 000 kPa	5,076 psi

SWING MECHANISM		
Swing Speed	10.2 rpm	
Maximum Swing Torque	43.8 kN·m	32,305 lbf·ft

WEIGHT		
Operating Weight	16 510 kg	36,400 lb

SERVICE REFILL CAPACITIES		
Fuel Tank	350 L	92.5 gal
Cooling System	24 L	6.3 gal
Engine Oil	13 L	3.4 gal
Diesel Exhaust Fluid (DEF) Tank	30 L	7.9 gal
Final Drive	2.5 L	0.7 gal
Hydraulic System (including tank)	260 L	68.7 gal
Hydraulic Tank	120 L	31.7 gal

DIMENSIONS		
Boom	Reach 5205 mm (17'1")	
Stick	Reach 2.5 m (8'2")	
Bucket	GD 0.8 m ³ (1.05 yd ³)	
Shipping Height (top of cab)	3194 mm	10'6"
Support Point	3870 mm	12'8"
Shipping Length	8710 mm	28'7"
Tail Swing Radius	2350 mm	7'9"
Counterweight Clearance	1301 mm	4'3"
Ground Clearance	395 mm	1'4"
Undercarriage Length	4970 mm	16'4"
Wheel Base	2550 mm	8'4"

WORKING RANGES AND FORCES		
Boom Type	VA Boom	
Stick	Reach 2.5 m (8'2")	
Bucket	GD 0.8 m ³ (1.05 yd ³)	
Loading Height	7140 mm	23'5"
Cutting Height	10 110 mm	33'2"
Digging Depth	5630 mm	18'6"
Reach at Ground Level	8970 mm	29'5"
Vertical Wall Digging Depth	4410 mm	14'6"
<ul style="list-style-type: none"> • Range values are with dual pneumatic tires (10.00-20). • Range values are calculated with a GD bucket (CW) and CW-30 quick coupler with a tip radius of 1484 mm (4'10"). 		

AIR CONDITIONING SYSTEM		
<ul style="list-style-type: none"> • The air conditioning system on this machine contains the fluorinated greenhouse gas refrigerant R134a (Global Warming Potential = 1430). The system contains 0.85 kg of refrigerant which has a CO₂ equivalent of 1.216 metric tonnes. 		

STANDARD & OPTIONAL EQUIPMENT

Standard and optional equipment may vary. Consult your Cat dealer for details.

CAB	STANDARD	OPTIONAL
ROPS, advanced sound suppression (ISO 12117-2:2008)	•	
Deluxe Cab		•
Premium Cab		•
Auxiliary relay		•
High-resolution 254 mm (10 in) LCD touchscreen monitor	•	
CAT TECHNOLOGY	STANDARD	OPTIONAL
Product Link™	•	
Remote flash/troubleshoot capability	•	
Cat Grade with 2D		•
Cat Grade with Advanced 2D		•
Cat Grade with 3D		•
Cat Payload		•
2D E-Fence		•
Laser catcher		•
ENGINE	STANDARD	OPTIONAL
Power mode selector	•	
One-touch low idle with auto engine speed control	•	
Auto engine idle shutdown	•	
52°C (125°F) high-ambient cooling capacity	•	
-18°C (0°F) cold start capability	•	
Double element air filter with integrated precleaner	•	
HYDRAULIC SYSTEM	STANDARD	OPTIONAL
Automatic swing brake	•	
Auto hydraulic oil warm up	•	
Electronic main control valve	•	
Boom and stick drift reduction valves	•	
Slider joysticks (2 types)		•
Combined flow/high-pressure auxiliary circuit		•
Quick coupler circuit		•
Boom and stick lowering check valves		•
SmartBoom™		•
Ride control		•
Joystick steering		•
Separate dedicated swing pump	•	

BOOM AND STICKS	STANDARD	OPTIONAL
5205 mm (17'1") variable adjustable boom		•
2500 mm (8'2") stick		•
UNDERCARRIAGE AND STRUCTURES	STANDARD	OPTIONAL
10.00-20 16 PR, dual tires		•
445/70R 19.5, single tires		•
Automatic brake/axle lock	•	
2600 kg (5,732 lb) counterweight		•
All-wheel drive	•	
ELECTRICAL SYSTEM	STANDARD	OPTIONAL
LED lights on boom and cab	•	
LED lights on chassis (left-hand, right-hand) and counterweight		•
Programmable time-delay LED working lights	•	
Roading and indicator lights, front and rear	•	
Maintenance-free batteries	•	
Centralized electrical disconnect switch	•	
Electrical refueling pump		•
SERVICE AND MAINTENANCE	STANDARD	OPTIONAL
Sampling ports for Scheduled Oil Sampling (S•O•S SM)	•	
Ground-level and platform-level engine oil dipsticks	•	
Automatic lubrication system for implement and swing system		•
SAFETY AND SECURITY	STANDARD	OPTIONAL
Rear- and side-view cameras	•	
360° visibility		•
Wide angle mirrors	•	
Ground-level engine shutoff switch	•	
Anti-skid plate	•	
Signaling/warning horn	•	

Not all features are available in all regions. Please check with your local Cat dealer for specific offering availability in your area.
For additional information, refer to the Technical Specifications brochures for the M316 available at www.cat.com or your Cat dealer.

For more complete information on Cat products, dealer services and industry solutions, visit us on the web at www.cat.com.

Materials and specifications are subject to change without notice. Featured machines in photos may include additional equipment. See your Cat dealer for available options.

© 2022 Caterpillar. All Rights Reserved. CAT, CATERPILLAR, LET'S DO THE WORK, their respective logos, Product Link, SmartBoom, S•O•S, "Caterpillar Corporate Yellow", the "Power Edge" and Cat "Modern Hex" trade dress as well as corporate and product identity used herein, are trademarks of Caterpillar and may not be used without permission. VisionLink is a trademark of Caterpillar Inc., registered in the United States and in other countries.

www.cat.com www.caterpillar.com

AEXQ3117-02
Replaces: AEXQ3117-01
Build Number: 07C
(N Am)

