

# M315

## WHEELED EXCAVATOR



---

<b>Engine Power (ISO 14396:2002)</b>	90 kW (121 hp)
<b>Operating Weight Maximum</b>	15 700 kg (34,610 lbs)

Cat® C3.6 engine meets Brazil MAR-1 emission standards, equivalent to U.S. EPA Tier 3 and EU Stage IIIA.



# THE NEW CAT® M315

PRODUCTIVITY

The Cat M315 Wheeled Excavator increases your efficiency with more comfort in the cab and easy-to-use controls. Lower fuel and maintenance costs put money back in your pocket.



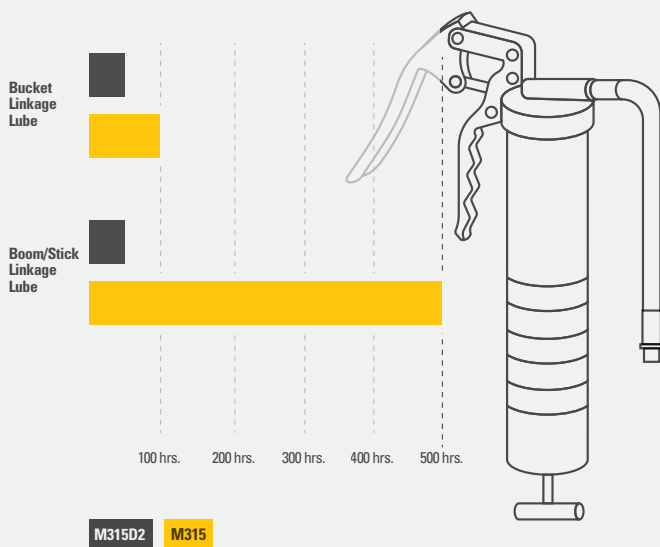
## NEXT GENERATION WHEELED EXCAVATORS

The new wheeled excavators match your performance needs to bring you:

- + LOWER OPERATING AND MAINTENANCE COSTS
- + INCREASED OPERATOR EFFICIENCY
- + MORE IN-CAB COMFORT



## DO MORE WORK WITH EXTENDED INTERVALS



## MAXIMIZE PERFORMANCE

Work faster with up to 14% more swing torque with lower fuel consumption.

## ENHANCED CAB COMFORT

Operate comfortably with the ergonomic control layout and cab options. Get better visibility with rear- and optional side-view cameras.

## UP TO 10% MAINTENANCE SAVINGS<sup>1</sup>

Fewer maintenance costs, combined with 100% daily ground-level maintenance and extended service intervals, increase uptime and keep costs down.

<sup>1</sup> Compared to the M315D2

# CAT TECHNOLOGY

Cat Equipment Management telematics technology helps take the complexity out of managing your jobsites by gathering data generated by your equipment, materials, and people and serving it up to you in customizable formats.



## **PRODUCT LINK™**

Product Link™ collects data automatically and accurately from your assets – any type and any brand. Information such as location, hours, fuel usage, productivity, idle time, maintenance alerts, diagnostic codes, and machine health can be viewed online through web and mobile applications.



## **VISIONLINK®**

Access information anytime, anywhere with VisionLink®. Use it to make informed decisions that boost productivity, lower costs, simplify maintenance, and improve safety and security on your jobsite. With different subscription level options, your Cat dealer can help you configure exactly what you need to connect your fleet and manage your business without paying for extras you don't want. Subscriptions are available with cellular or satellite reporting (or both).



## **CAT GRADE WITH 2D**

Cat Grade with 2D helps operators reach grade faster. Onboard processors and sensors provide real-time guidance on distance to grade without guesswork. Work safer with fewer ground personnel needed to check the work area for obstacles or grade. All Cat Grade systems are compatible with radios and base stations from Trimble.

## **CAT PAYLOAD**

Cat Payload helps you achieve precise load targets to improve your operating efficiency. Pick up a load of material – with a bucket and thumb combination or grapple and clamshell attachments – and get a real-time weight estimate without swinging.

Get in and out of the cab more easily with the tilt-up left console. Comfort and deluxe cab options offer supreme comfort from a heated seat to automatic temperature control.

# CAB TAKES THE HARD OUT OF WORK



## ERGONOMIC CONTROL LAYOUT

Controls are positioned to reduce fatigue and straining movements to help keep you operating at your full potential.

## REDUCED CAB VIBRATIONS

Feel more comfortable in the cab while you work with reduced cab vibrations from advanced viscous mounts.

## BLUETOOTH® CONNECTION

Bluetooth-integrated radio allows for seamless mobile phone connection to listen to music, podcasts, and hands-free calling.

## LONGER SERVICE INTERVALS

The in-cab monitor tracks filter life and machine intervals, so you always know when it's time for regular machine service.

## GROUND-LEVEL ACCESS

Complete your daily machine checks entirely from the ground, minimizing the need to access the upper platform.

## NEW FILTERS

Two levels of filtration protect your engine from dirty diesel. The new hydraulic oil filter improves filtration performance and lasts up to 50% longer than previous filter designs.





## KEYLESS PUSH START

Start the engine with the push-to-start button or using the unique operator ID function.



## MACHINE SETTINGS

Access the operator manual at your fingertips as well as the power mode selector to keep productivity while using less fuel.



## JOYSTICK PREFERENCES

Program your preferred power mode and joystick preferences with your operator ID. Once you enter in your operator ID, the excavator remembers your settings each time. Make operating easier with the touch of a joystick button. Additional auxiliary relays allow you to power on or turn off a CB radio, beacon light, and even a dust suppression watering system without taking your hands off the joysticks.



## TOUCHSCREEN MONITOR

Use the standard 203 mm (8-in) touchscreen monitor to adjust your heating/cooling setting for more comfort or to view your machine information.

# LOOK OUT FOR YOUR PEOPLE AND YOUR EQUIPMENT

# SAFETY FEATURES



## STAY SAFE EVERY DAY

**FACT:**

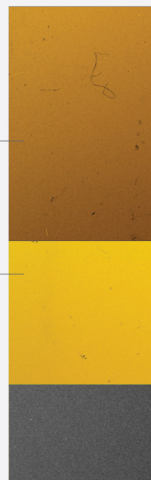
#1 cause of construction accidents: **FALLS\***

**49%** OF FALLS RESULT IN SERIOUS INJURY

**30%** OF FALLS RESULT IN DEATH

**100%** GROUND-LEVEL MAINTENANCE HELPS PREVENT FALLS

### FALLS



\*<https://www.ncbi.nlm.nih.gov/pmc/articles/PMC4962179/>

Daily maintenance checks can be performed with 100% of the points accessible from ground level, making maintenance faster, easier, and safer. Standard LED lights give you a better view of your jobsite.

- + ENJOY BETTER VISIBILITY INTO TRENCHES IN EACH SWING DIRECTION. SMALLER CAB PILLARS, LARGER WINDOWS, AND A FLAT ENGINE HOOD DESIGN LOWER OBSTRUCTION TO YOUR VIEW. REARVIEW AND SIDE-VIEW CAMERAS ARE AVAILABLE FOR A BETTER VIEW AROUND YOU.
- + THE STANDARD SOUND SUPPRESSION ROLLOVER PROTECTIVE STRUCTURE (ROPS) CAB MEETS ISO 12117-2:2008 REQUIREMENTS AND HELPS TO BLOCK THE NOISE TO STAY FOCUSED ON THE JOB.
- + THE SERVICE PLATFORM DESIGN PROVIDES EASY, SAFE, AND QUICK ACCESS TO UPPER PLATFORM. THE STEPS USE ANTI-SKID PUNCH PLATE TO PREVENT SLIPPING.
- + OPTIONAL 2D E-FENCE IS INTEGRATED RIGHT OUT OF THE FACTORY TO PREVENT THE EXCAVATOR FROM MOVING OUTSIDE OPERATOR DEFINED SETPOINTS.

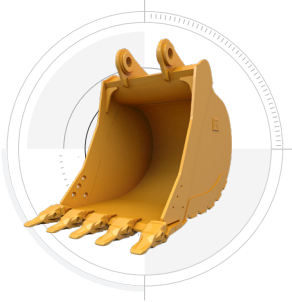


INCREASE PRODUCTIVITY AND VERSATILITY

# WITH CAT ATTACHMENTS

You can easily expand the performance of your machine by utilizing any of the variety of Cat attachments. Each Cat attachment is designed to fit the weight and horsepower of Cat wheeled excavators for improved performance, safety, and stability.

**BUCKETS**



**GRAPPLES**



**HYDRAULIC HAMMERS**



**QUICK COUPLER**



**DITCH CLEANING  
TILT BUCKET**



**VIBRATORY PLATE  
COMPACTORS**



**PIN GRABBER COUPLER**



# TECHNICAL SPECIFICATIONS

See [cat.com](http://cat.com) for complete specifications.

ENGINE		
Engine Model	Cat® C3.6	
Engine Power – ISO 14396:2002	90 kW	121 hp
Net Power – ISO 9249:2007	90 kW	121 hp
Bore	98 mm	3.9 in
Stroke	120 mm	5.0 in
Displacement	3.6 L	221 in <sup>3</sup>
<ul style="list-style-type: none"> <li>• Net power is tested per ISO 9249:2007. Standards in effect at the time of manufacture.</li> <li>• Net power advertised is the power available at the flywheel when engine is equipped with fan, air cleaner, alternator, and cooling fan running at intermediate speed.</li> <li>• Rated speed 2,000 rpm.</li> </ul>		

HYDRAULIC SYSTEM		
Main System – Maximum Flow – Implement	270 L/min	71 gal/min
Maximum Pressure – Equipment	35 000 kPa	5,076 psi
Maximum Pressure – Travel	35 000 kPa	5,076 psi
Maximum Pressure – Swing	35 500 kPa	5,149 psi

SWING MECHANISM		
Swing Speed	9.1 rpm	
Maximum Swing Torque	41.3 kN·m	30,461 lbf·ft

WEIGHTS		
Operating Weight Minimum	15 100 kg	33,290 lb
Operating Weight Maximum	15 700 kg	34,610 lb
<ul style="list-style-type: none"> <li>• Operating weight includes full fuel tank, operator, 500 kg (1,102 lb) bucket, and 9.00-20 dual pneumatic tires. Weight varies depending on configuration.</li> </ul>		

SERVICE REFILL CAPACITIES		
Fuel Tank	295 L	77.9 gal
Cooling System	20 L	5.3 gal
Engine Oil	9 L	2.4 gal
Final Drive	2.4 L	0.6 gal
Hydraulic System (including tank)	220 L	58.1 gal
Hydraulic Tank	90 L	23.8 gal

DIMENSIONS		
Boom	Reach 4650 mm (15'3")	
Stick	Reach 2.2 m (7'3")	
Bucket	GD 0.76 m <sup>3</sup> (0.99 yd <sup>3</sup> )	
Shipping Height (top of cab)	3285 mm	10'9"
Support Point	2800 mm	9'2"
Shipping Length	7770 mm	25'6"
Tail Swing Radius	2150 mm	7'1"
Counterweight Clearance	1230 mm	4'0"
Ground Clearance	305 mm	1'0"
Undercarriage Length	4920 mm	16'2"
Wheel Base	2500 mm	8'2"

WORKING RANGES AND FORCES		
Boom Type	One-Piece Boom	
Stick	Reach 2.2 m (7'3")	
Bucket	GD 0.76 m <sup>3</sup> (0.99 yd <sup>3</sup> )	
Digging Height	8730 mm	28'8"
Dump Height	6000 mm	19'8"
Digging Depth	4980 mm	16'4"
Reach at Ground Level	8190 mm	26'10"
Vertical Wall Digging Depth	4320 mm	14'2"
<ul style="list-style-type: none"> <li>• Range values are with dual pneumatic tires (9.00-20).</li> <li>• Range values are calculated with a GD bucket (CW) and CW-20-D.4.N quick coupler with a tip radius of 1387 mm (4'7").</li> </ul>		

# STANDARD & OPTIONAL EQUIPMENT

Standard and optional equipment may vary. Consult your Cat dealer for details.

CAB	STANDARD	OPTIONAL
ROPS, advanced sound suppression (ISO 12117-2:2008)	•	
Comfort cab	•	
Deluxe cab		•
Auxiliary relay*		•
High-resolution 203 mm (8 in) LCD touchscreen monitor	•	
High-resolution 254 mm (10 in) LCD touchscreen monitor		•
CAT TECHNOLOGY	STANDARD	OPTIONAL
Product Link™	•	
Remote flash/troubleshoot capability	•	
Cat Grade with 2D		•
Cat Payload		•
2D E-Fence		•
Laser catcher		•
ENGINE	STANDARD	OPTIONAL
Power mode selector	•	
One-touch low idle with auto engine speed control	•	
Auto engine idle shutdown	•	
52°C (125°F) high-ambient cooling capacity	•	
-18°C (0°F) cold start capability	•	
Double element air filter with integrated precleaner	•	
HYDRAULIC SYSTEM	STANDARD	OPTIONAL
Automatic swing brake	•	
Auto hydraulic oil warm up	•	
Electronic main control valve	•	
Boom and stick drift reduction valves	•	
1-Slider joystick	•	
Advanced tool control (one/two-way high-pressure flow with drift reduction)	•	
Medium pressure auxiliary circuit (one/two-way medium-pressure flow)		•
Quick coupler circuit		•
Boom and stick lowering check valves		•
Separate dedicated swing pump	•	

BOOM AND STICKS	STANDARD	OPTIONAL
4650 mm (15'3") one-piece boom	•	
2200 mm (7'3") stick		•
2500 mm (8'2") stick		•
UNDERCARRIAGE AND STRUCTURES	STANDARD	OPTIONAL
Tires, 9.00-20 14 PR, dual	•	
Automatic brake/axle lock	•	
3100 kg (6,834 lb) counterweight	•	
All-wheel drive	•	
ELECTRICAL SYSTEM	STANDARD	OPTIONAL
LED lights on boom and cab	•	
LED lights on chassis (left-hand, right-hand) and counterweight		•
Programmable time-delay LED working lights	•	
Roading and indicator lights, front and rear	•	
Maintenance-free batteries	•	
Centralized electrical disconnect switch	•	
Electrical refueling pump		•
SERVICE AND MAINTENANCE	STANDARD	OPTIONAL
Sampling ports for Scheduled Oil Sampling (S•O•S <sup>SM</sup> )	•	
Ground-level and platform-level engine oil dipsticks	•	
SAFETY AND SECURITY	STANDARD	OPTIONAL
Rear- and side-view cameras		•
Wide angle mirrors	•	
Ground-level engine shutoff switch	•	
Anti-skid plate	•	
Signaling/warning horn	•	

\*Deluxe cab only

Not all features are available in all regions. Please check with your local Cat dealer for specific offering availability in your area. For additional information, refer to the Technical Specifications brochures for the M315 available at [www.cat.com](http://www.cat.com) or your Cat dealer.



For more complete information on Cat products, dealer services and industry solutions, visit us on the web at [www.cat.com](http://www.cat.com).

Materials and specifications are subject to change without notice. Featured machines in photos may include additional equipment. See your Cat dealer for available options.

© 2022 Caterpillar. All Rights Reserved. CAT, CATERPILLAR, LET'S DO THE WORK, their respective logos, Product Link, S•O•S, "Caterpillar Corporate Yellow", the "Power Edge" and Cat "Modern Hex" trade dress as well as corporate and product identity used herein, are trademarks of Caterpillar and may not be used without permission. VisionLink is a trademark of Caterpillar Inc., registered in the United States and in other countries.

[www.cat.com](http://www.cat.com) [www.caterpillar.com](http://www.caterpillar.com)

AEXQ3118-02  
Replaces: AEXQ3118-01  
Build Number: 07C  
(Afr-ME, S Am, Pacific Islands,  
Eurasia, SE Asia)

