

# 350

## HYDRAULIC EXCAVATOR



---

Net Power – ISO 9249  
Operating Weight  
Maximum Digging Depth

308 kW (413 hp)  
47 600 kg (105,000 lb)  
7300 mm (23.1 ft)



# 350

## HYDRAULIC EXCAVATOR

The Cat® 350 is reliable, efficient, and productive. Its enhanced filters and extended service intervals ensure you'll get more uptime for class-leading performance. Featuring a C9.3B engine, the 350 meets China Nonroad Stage IV emission standards. This excavator is designed, built, and uniquely supported to put you on the fast track to prosperity.

Not all features available in all regions. Consult your Cat dealer for specific configurations available in your region.



### HIGH PRODUCTIVITY

Get work done with more digging force, swing torque, and bigger buckets.

### DESIGNED FOR DEMANDING APPLICATIONS

Expect more uptime with proven undercarriage, HD booms and sticks, and SD buckets.

### LOW OWNING AND OPERATING COSTS

Spend less with greater fuel efficiency, extended service intervals, and long life filters.

# LATEST FEATURES



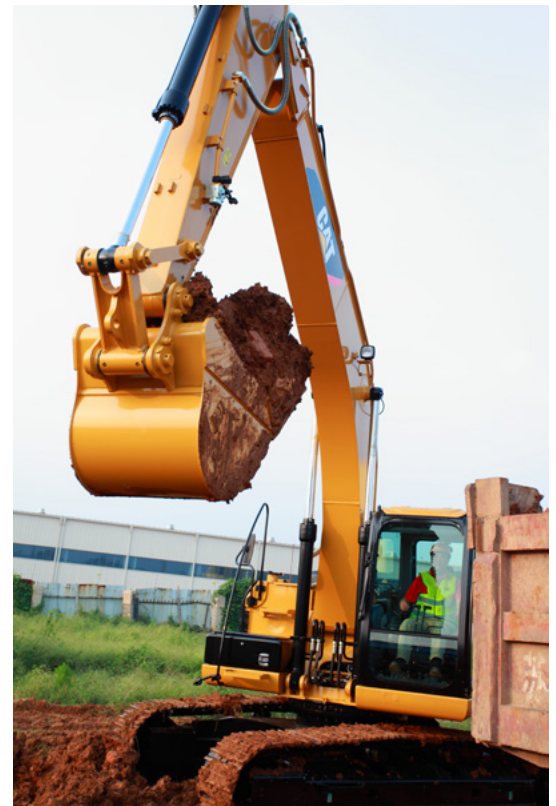
- Cab Monitor Improvements
  1. Continuously improved user interface allows for intuitive navigation, minimizing performance interruption with the easy-to-use touchscreen menu.
  2. Identify apps quickly with a grid list view, abbreviated app names, and categorized menu options.
  3. A new notification center keeps important information visible to the operator, and displays messages without shrinking the camera view.
  4. Color coded notifications set critical messages apart from the rest.
  5. Use the in-monitor QR code to learn about machine technology and features through a full suite of "how-to" videos.
- Standard integrated vehicle health management system alerts the operator with service guidance and parts needed to enhance uptime.

***Not all features are available in all regions. Please check with your local Cat dealer for specific offering availability in your area. Build Number: 06C***

# HIGH PERFORMANCE, LOW FUEL CONSUMPTION



- The C9.3B engine meets China Nonroad Stage IV emissions standards.
- Match the excavator to the job with two power modes. Smart mode automatically matches engine and hydraulic power to digging conditions, providing max power when needed and reducing power when it does not help to save fuel.
- The advanced hydraulic system provides the optimum balance of power and efficiency while giving you the control you need for precise digging requirements.
- Valve priority puts hydraulic pressure and flow where you command it to go for fast light- to medium-load cycle times.



# RELIABLE IN ALL WEATHER

- Work up to 3000 m (9,840 ft) above sea level without de-rating.
- Standard high-ambient temperature capability is 52° C (125° F). Standard cold start capability is -18° C (0° F); -32° C (-25° F) cold start capability is an available option.
- Automatic hydraulic oil warmup gets you to work faster in cold temperatures and helps prolong the life of components.
- Three levels of filtration protect the engine from contaminated diesel fuel.
- Grease sealed between track pins and bushings reduces travel noise and prevents debris from entering to increase undercarriage life.
- Standard built-in protection includes bottom, travel motor, and swivel guards.
- The sloped track frame prevents mud and debris accumulation, helping reduce risk of track damage.



# WORK IN COMFORT



- The Comfort Cab has a wide seat that adjusts for operators of all sizes.
- Standard automatic climate control keeps you at the right temperature all shift long.
- Advanced viscous mounts reduce cab vibration by up to 50 percent over previous excavator models.
- Stow your gear with plenty of in-cab storage. A cup holder, bottle holder, and coat hook are also provided.
- Use the standard radio's USB ports and Bluetooth® technology to connect to personal devices.



# SIMPLE TO OPERATE

- Start the engine with a push button; use a Bluetooth key fob, smartphone app or the unique Operator ID function.
- Make operating easier with the touch of a joystick button. Additional auxiliary relays allow you to power on or turn off a CB radio, beacon light, and even a dust suppression watering system without taking your hands off the joysticks.
- Program each joystick button – including power mode, response, and pattern – using Operator ID; the machine will remember what you set each time you go to work.
- Cat continues to improve user interface functionality for operators of all skill levels. The touchscreen monitor is an easy-to-use operating tool that presents the jobsite dashboard with an intuitive format. Productivity applications are displayed in grid-view to read on-the-go, and touchscreen navigation is programmed to make sure job performance continues without any hold ups.
- Not sure how a function works or how to maintain the excavator? Always have the operator's manual at your fingertips in the touchscreen monitor.



# EASY MAINTENANCE



- Boost productivity with proactive service reminders. The Integrated Vehicle Health Management System alerts the operator with step-by-step service guidance along with parts needed so you don't experience any unnecessary downtime.
- Expect low maintenance cost due to extended and synchronized service intervals.
- Check hydraulic system oil and easily drain fuel system water from ground level.
- Track your excavator's filter life and maintenance intervals via the in-cab monitor.
- Oil and fuel filters are grouped and located on right-hand side of machine for easy maintenance.
- The air intake filter with pre-cleaner has double the dust holding capacity of the previous air intake filter.
- The hydraulic oil filter provides improved filtration performance; anti-drain valves keep oil clean when the filter is replaced.
- Scheduled Oil Sampling (S-O-S<sup>SM</sup>) ports are on ground level, simplifying maintenance and allowing for quick, easy extraction of fluid samples for analysis.



- Keep your excavator secure with Operator ID. Use your PIN code on the monitor to enable the push button starting feature.
- A travel direction indicator helps operators know which way to activate the travel levers.
- A ground-level shutoff switch stops all fuel to the engine when activated and shuts down the machine.
- Enjoy great visibility into the trench, in each swing direction, and behind you with the help of narrow cab posts and large windows.
- Serrated steps and anti-skid punch plate on the service platform help prevent slipping.
- A rearview camera is standard.
- The Rollover Protective Structure (ROPS) cab meets industry standards and protects the operator in the event of a rollover.



# SUSTAINABILITY

- The 350 meets China Nonroad Stage IV emissions standards.
- Cat diesel engines are required to use ULSD (ultra-low sulfur diesel fuel with 15 ppm of sulfur or less) or ULSD blended with the following lower-carbon intensity fuels\*\* up to: 20% biodiesel FAME (fatty acid methyl ester)\* or 100% renewable diesel, HVO (hydrogenated vegetable oil) and GTL (gas-to-liquid) fuels. Refer to guidelines for successful application. Please consult your Cat dealer or “Caterpillar Machine Fluids Recommendations” (SEBU6250) for details.
- Auto engine speed control reduces unnecessary fuel burn and greenhouse gas emissions by allowing the engine to automatically go into idle mode when the machine is not working.
- Extended maintenance intervals not only reduce downtime but decrease the amount of fluid and filters that are replaced over the life of the machine.
- Cat S-O-S Services helps reveal excessive wear, contaminated fluids or other “unseen” issues that can shorten component life. In many cases, you can extend oil and coolant change intervals by using fluid monitoring. Consult your Cat dealer or the machine’s operation and maintenance manual for more information.
- A well-trained operator is worth the investment. Skilled operators benefit your bottom line by maximizing productivity, avoiding costly downtime, and maintaining jobsite safety – which can help to improve fuel efficiency and reduce greenhouse gas emissions.

***\*Engines with no aftertreatment devices can use higher blends, up to 100% biodiesel (for use of blends higher than 20% biodiesel, consult your Cat dealer).***

***\*\*Tailpipe greenhouse gas emissions from lower-carbon intensity fuels are essentially the same as traditional fuels.***



# MORE THAN MACHINES

BUILT AROUND YOUR SUCCESS

When you buy Cat equipment, you get so much more than the machine. You also get the support of a best-in-class dealer network, backed by a range of flexible solutions, technology, tools, and more.



## CUSTOMER VALUE AGREEMENTS

A Customer Value Agreement (CVA) from your Cat dealer helps you do more and worry less. A CVA simplifies machine ownership and maintenance, adds the security of expert dealer support, and gives you the peace of mind from effective equipment health management.

## GENUINE CAT PARTS

Genuine Cat parts deliver the highest level of reliability and productivity. Order direct from your Cat dealer or shop online at [parts.cat.com](http://parts.cat.com).

## REPAIR OPTIONS

A broad range of repair options gives you choices that work with your needs, budget, and timeline. Every repair is performed by expert Cat technicians. You'll receive smart repair advice, a timely, accurate quote, and service that gets your machine back into action quickly.

## FINANCIAL SERVICES

Count on Cat Financial to provide the best finance and extended protection solutions for your business. For more than 30 years, we have helped our customers succeed through financial service excellence.



DOZERS



SKID STEERS



MATERIAL HANDLERS



EXCAVATORS



WHEEL LOADERS



TRACK LOADERS

# INCREASE YOUR PRODUCTIVITY AND PROFIT WITH CAT ATTACHMENTS

You can easily expand the performance of your excavator by utilizing any Cat attachment. Each Cat tool is designed to fit the weight and horsepower of the excavator for improved performance, safety, and stability.

## BUCKETS



### MAKE EVERY PASS COUNT

Did you know that most fuel is burned during digging? The right Cat bucket tailored to your specific application can deliver up to 15% more efficiency with better penetration and loading.

## HYDRAULIC HAMMERS



### BREAK BIG ROCKS FAST

The 350 can handle hammers up to 200 mm in size, which will help you make quick work of big rocks.

# TECHNICAL SPECIFICATIONS

## Engine

Net Power - ISO 9249	308 kW	413 hp
Net Power - ISO 9249 (DIN)	419 hp (metric)	
Engine Model	C9.3 B	
Engine Power - ISO 14396	309 kW	414 hp
Engine Power - ISO 14396 (DIN)	420 hp (metric)	
Bore	115 mm	5 in
Stroke	149 mm	6 in
Displacement	9.3 L	568 in <sup>3</sup>
Biodiesel Capability	Up to B20 <sup>1</sup>	
Emissions	Meets China Nonroad Stage IV emission standards.	

Net power advertised is the power available at the flywheel when the engine is equipped with fan, air intake system, exhaust system, and alternator with engine speed at 2,000 rpm. Advertised power is tested per the specified standard in effect at the time of manufacture.

<sup>1</sup>Cat diesel engines are required to use ULSD (ultra-low sulfur diesel fuel with 15 ppm of sulfur or less) or ULSD blended with the following lower-carbon intensity fuels\*\* up to 20% biodiesel FAME (fatty acid methyl ester)\* or 100% renewable diesel, HVO (hydrotreated vegetable oil) and GTL (gas-to-liquid) fuels. Refer to guidelines for successful application. Please consult your Cat dealer or "Caterpillar Machine Fluids Recommendations" (SEBU6250) for details.

\*Engines with no aftertreatment devices can use higher blends, up to 100% biodiesel.

\*\*Tailpipe greenhouse gas emissions from lower-carbon intensity fuels are essentially the same as traditional fuels.

## Hydraulic System

Main System - Maximum Flow - Implement	779 L/min	206 gal/min
Maximum Pressure - Equipment	35 000 kPa	5,076 psi
Maximum Pressure - Travel	35 000 kPa	5,076 psi
Maximum Pressure - Swing	25 700 kPa	3,727 psi

## Swing Mechanism

Swing Speed	7.94 r/min	
Maximum Swing Torque	189 kN-m	139,275 ft-lbf

## Weights

Operating Weight	47 600 kg	105,000 lb
------------------	-----------	------------

## Service Refill Capacities

Fuel Tank Capacity	680 L	179.6 gal
Cooling System	48 L	12.7 gal
Engine Oil	32 L	8.5 gal
Diesel Exhaust Fluid (DEF) Tank	80 L	21.1 gal
Final Drive - Each	11 L	2.9 gal
Hydraulic System - Including Tank	550 L	145.3 gal
Hydraulic Tank	217 L	57.3 gal

## Dimensions

Boom	Mass 6.55 m (21'6")	
Stick	M3.0 m (9'10")	
Bucket	SD 3.2 m <sup>3</sup> (4.20 yd <sup>3</sup> )	
Shipping Height - Top of Cab	3260 mm	10.8 ft
Handrail Height	3400 mm	11.2 ft
Shipping Length	11 630 mm	38.2 ft
Tail Swing Radius	3760 mm	12.4 ft
Counterweight Clearance	1340 mm	4.5 ft
Ground Clearance	520 mm	1.8 ft
Track Length	5400 mm	17.9 ft
Track Length to Center of Rollers	4360 mm	14.4 ft
Track Gauge	2740 mm	9 ft
Transport Width	3350 mm	11 ft

## Working Ranges & Forces

Boom	Mass 6.55 m (21'6")	
Stick	M3.0 m (9'10")	
Bucket	SD 3.2 m <sup>3</sup> (4.20 yd <sup>3</sup> )	
Maximum Digging Depth	7300 mm	23.1 ft
Maximum Reach at Ground Level	11 270 mm	37 ft
Maximum Cutting Height	10 260 mm	33.8 ft
Maximum Loading Height	6730 mm	22.1 ft
Minimum Loading Height	2570 mm	8.4 ft
Maximum Depth Cut for 2440 mm (8 ft) Level Bottom	7160 mm	23.5 ft
Maximum Vertical Wall Digging Depth	4800 mm	15.7 ft
Bucket Digging Force - ISO	291 kN	65,480 lbf
Stick Digging Force - ISO	211 kN	47,510 lbf

## Air Conditioning System

The air conditioning system on this machine contains the fluorinated greenhouse gas refrigerant R134a (Global Warming Potential = 1430). The system contains 1.00 kg of refrigerant, which has a CO<sub>2</sub> equivalent of 1.430 metric tonnes.

# STANDARD & OPTIONAL EQUIPMENT

NOTE: Standard and optional equipment may vary. Consult your Cat dealer for details.

	Standard	Optional		Standard	Optional
<b>UNDERCARRIAGE AND STRUCTURES</b>			<b>SAFETY AND SECURITY</b>		
Towing eye on base frame	✓		Caterpillar One Key security system	✓	
9,000 kg (19, 842 lb) counterweight	✓		Lockable door, fuel, and hydraulic tank locks	✓	
600 mm (24") double grouser track shoes	✓		Lockable fuel drain compartment	✓	
750mm (30") double grouser track shoes		✓	Service platform with anti-skid plate and recessed bolts	✓	
750mm (30") triple grouser track shoes		✓	Right-hand handrail and hand hold	✓	
<b>BOOMS AND STICKS</b>			Mirror package	✓	
6.9 m (22'8") Reach boom		✓	Signaling/warning horn	✓	
6.55 m (21'6") Mass boom		✓	Ground-level secondary engine shutoff switch	✓	
3.35 m (11'0") Reach stick		✓	Rearview camera	✓	
3.0 m (9'10") Mass stick		✓	Lockable disconnect switch	✓	
2.5 m (8'2") Mass stick		✓			
<b>CAB</b>					
High-resolution LCD touch screen monitor	✓				
Mechanically adjustable seat	✓				
<b>ENGINE</b>					
Two selectable modes: Power, Smart	✓				
Auto engine speed control	✓				
3000 m (9,840 ft) altitude capability	✓				
52° C (126° F) high-ambient cooling capacity	✓				
-18° C (0° F) cold start capability	✓				
Double element air filter with integrated pre-cleaner	✓				
Biodiesel capability up to B20	✓				
Cold start block heaters		✓			
-32° C (-25° F) cold start capability		✓			
<b>ELECTRICAL SYSTEM</b>					
Maintenance-free 1000 CCA batteries (x2)	✓				
Centralized electrical disconnect switch	✓				
LED exterior lights	✓				
<b>SERVICE AND MAINTENANCE</b>					
Integrated vehicle health management system	✓				
Grouped location of engine oil and fuel filters	✓				
S-O-S ports	✓				
<b>HYDRAULIC SYSTEM</b>					
Boom and stick regeneration circuit	✓				
Electronic main control valve	✓				
Auto hydraulic oil warm up	✓				
Reverse swing damping valve	✓				
Auto swing parking brake	✓				
High performance hydraulic return filter	✓				
Two speed travel	✓				
Bio hydraulic oil capability	✓				



For more complete information on Cat products, dealer services and industry solutions, visit us on the web at [www.cat.com](http://www.cat.com).

© 2024 Caterpillar. All Rights Reserved.

Materials and specifications are subject to change without notice. Featured machines in photos may include additional equipment. See your Cat dealer for available options.

CAT, CATERPILLAR, LET'S DO THE WORK, their respective logos, SmartBoom, S·O·S, Product Link, "Caterpillar Corporate Yellow," the "Power Edge" and Cat "Modern Hex" trade dress as well as corporate and product identity used herein, are trademarks of Caterpillar and may not be used without permission.  
[www.cat.com](http://www.cat.com) [www.caterpillar.com](http://www.caterpillar.com)

AEXQ3111-03  
Replaces AEXQ3111-02  
Build Number: 06C  
(China)

