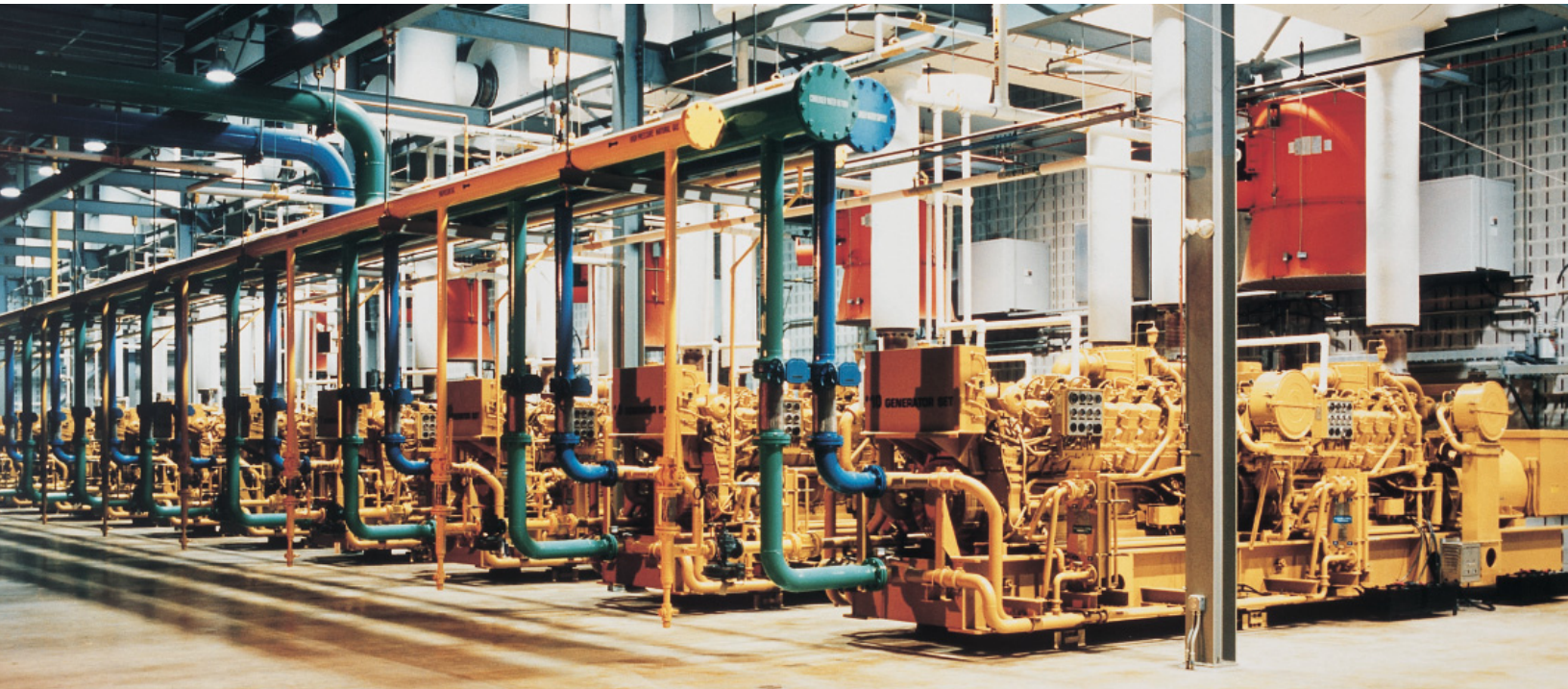


# Cat<sup>®</sup> NGE0 EL350<sup>™</sup>

Engine oil for natural gas applications and other engines requiring low-ash oil.

SAE 40



## Recommended Use

- Provides superior lubrication in high-horsepower gaseous-fueled engines
- Compatible with exhaust catalyst applications that require a low-phosphorus oil
- Compatible with “lean burn” engines requiring low-ash oil
- Provides optimum engine and oil life with low-sulfur gaseous fuels that contain less than 0.43 mg hydrogen per mega Joule (0.35 mg hydrogen sulfide per BTU)
- May be used in engines that use high-sulfur gas, provided that shorter drain intervals are employed

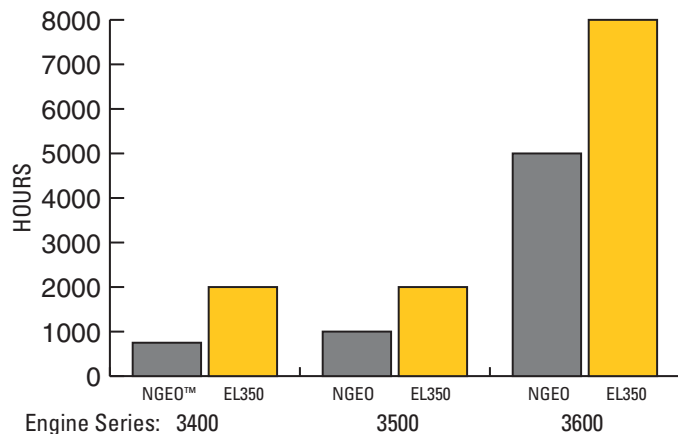
## Discover the Difference

Cat NGE0 EL350 is developed, tested and approved by Caterpillar to meet the same high standards as Genuine Cat Parts.

- Factory-Fill—Used as standard factory-fill for Cat natural gas engines.
- Reduced Piston and Cylinder Wear—Anti-oxidation and anti-nitration properties prevent deposit buildup to minimize scuffing, scoring and wear.
- Increased Spark Plug and Valve Life—Excellent detergent and dispersant additives protect against deposits and damage.
- Corrosion Protection—Acid neutralizers protect parts from rust and copper corrosion.
- Extended Drain Intervals—Provides extended oil drain capabilities when using our S•O•S<sup>SM</sup> Services.

**CATERPILLAR<sup>®</sup>**

## Recommended Drain Intervals



## Extended Drain Intervals

When used in recommended engines, Cat NGE0 EL350 can extend oil change intervals by 60 to 160% over NGE0. The graph to the left compares intervals for NGE0 with those for NGE0 EL350 where Cat Filters and S•O•S Services are used.

### S•O•S Services for early problem detection

Protect your investment with Cat S•O•S oil analysis, the ultimate detection and diagnostic tool for your equipment. S•O•S helps you detect potential problems before they can lead to major failures and costly, unscheduled downtime.

### Cat Filters: Complete protection for your engine

Combine Cat Fluids with Cat Filters for the highest level of contamination control and protection for your machine. We recommend Cat Filters for all Cat engine applications.

### Typical Characteristics\*

|                                   |       |
|-----------------------------------|-------|
| SAE Viscosity Grade               | 40    |
| Gravity @ 16° C                   |       |
| API (ASTM D287)                   | 29.3  |
| Specific                          | 0.882 |
| Flash Point, °C (ASTM D92)        | 247   |
| Pour Point, °C (ASTM D97)         | -21   |
| Viscosity                         |       |
| cSt @ 40° C (ASTM D445)           | 125   |
| cSt @ 100° C (ASTM D445)          | 13    |
| Viscosity Index (ASTM D2270)      | 97    |
| Sulfated Ash, % wt. (ASTM D874)   | 0.54  |
| TBN, mg KOH/g (ASTM D2896)        | 6.2   |
| Phosphorus, % wt. (Spectro or AA) | 0.03  |
| Calcium, % wt. (Spectro or AA)    | 0.13  |

\*The values shown are typical values and should not be used as quality control parameters to either accept or reject product. Specifications are subject to change without notice.

## Health and Safety

Under normal conditions of intended use, this product does not pose a risk to health. Excessive exposure may result in eye, skin or respiratory irritation. Always observe good hygiene measures. Read and understand the Material Safety Data Sheet (MSDS) before using this product. For a copy of the MSDS, contact us or visit the web at [www.catmsds.com](http://www.catmsds.com).

## CAT® DEALERS DEFINE WORLD-CLASS PRODUCT SUPPORT.

We offer you the right parts and service solutions, when and where you need them.

The Cat Dealer network of highly trained experts keeps your entire fleet up and running to maximize your equipment investment.

