

Powering the Future Through Sustainable, Innovative Energy Solutions



TURBINE DESIGN FEATURES

The Taurus™ 70 is a lightweight industrial gas turbine designed for high efficiency over its entire operating range. The turbine is built for the future with SoLoNOx™, the latest combustion and low emissions technology, fast starting capabilities and a modular design for maintainability. Its industrial design provides high reliability and durability with low lifecycle costs.



DIGITAL INTEGRATION

InSight Platform™, Solar's proprietary digital technology foundation, is integrated throughout this product and ready to connect in the field. InSight Platform provides an entire ecosystem of tools and capabilities that provide real-time diagnostics and analytics to Solar's Customer Service network, and performance metrics to the equipment owners and operators.



PACKAGE DESIGN FEATURES

The power generation module (PGM) package consists of preassembled modules which are fully tested prior to leaving the factory. The PGM greatly reduces installation cost and commissioning time. All components are of standard design for high efficiency, flexible operation and ease of maintenance. Solar can provide scope to include only the turbine generator set or the entire power island.



CUSTOMER SERVICES

Solar's worldwide service organization is dedicated to your success. Our culture of customer care is the foundation of our commitment to the highest quality customer experience. With more than 60 service locations around the world, we are committed to ensuring reliable, efficient performance that precisely fits your requirements.

Powering the Future Through Sustainable, Innovative Energy Solutions

Performance

Output Power	8180 kWe
Heat Rate	10 470 kJ/kWe-hr (9920 Btu/kWe-hr)
Exhaust Flow	96 675 kg/hr (213,125 lb/hr)
Exhaust Temp.	520°C (970°F)

Nominal rating – per ISO at 15°C (59°F), sea level, relative humidity 60%

No inlet/exhaust losses, no accessory losses

Natural gas fuel with LHV = 35 MJ/Nm³
(940 Btu/scf)

Engine efficiency: 34.4% (measured at generator terminals)

Capable of 20% H2 fuel content

Emissions capability: 15 ppm NOx

Operating ambient conditions: -20°C to 40°C

Steam production (saturated, unfired): 74.4 tons/hr

Ratings above are typical new equipment ratings.

Please contact Solar Turbines sales to obtain project specific data.

Package Dimensions

Length: 14.7 m (48' 3")

Width: 2.9 m (9' 6")

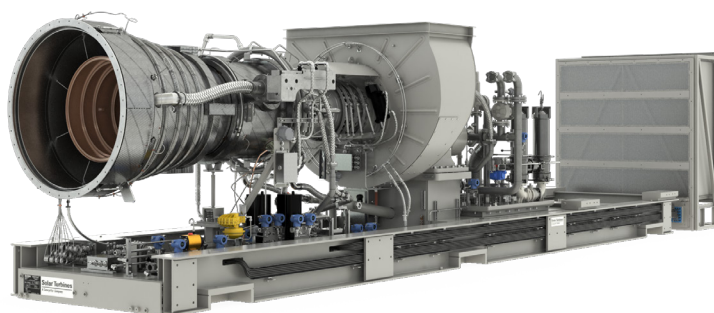
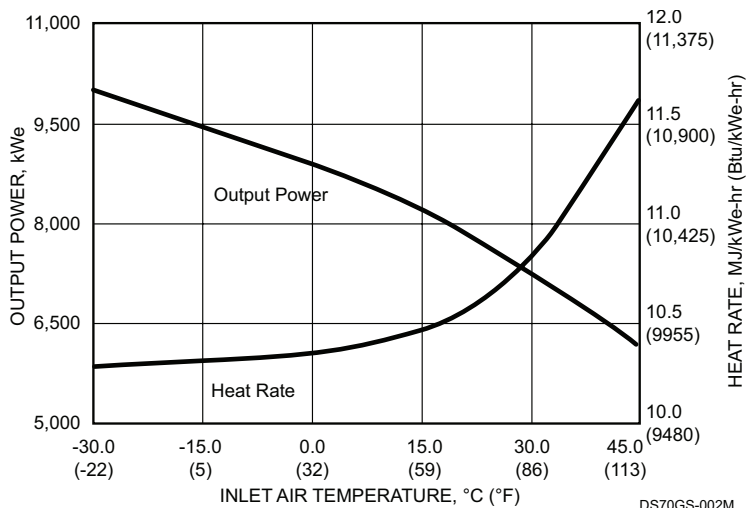
Turbine Enclosure Height: 3.5 m (11' 4")

Minimum Height with Filter: 7.7 m (25' 2")

Package Weight, Approx: 80 350 kg (176,980 lb)

Weights and dimensions for compact filter configuration, dry weight

Available Power



Solar Turbines Incorporated
P.O. Box 85376
San Diego, CA 92186-5376

Caterpillar is a trademark of Caterpillar Inc. Solar, Taurus, SoLoNOx and InSight Platform are trademarks of Solar Turbines Incorporated. Specifications subject to change without notice.
©2021 Solar Turbines Incorporated. All rights reserved.
DSPGM70/0221/EO

FOR MORE INFORMATION

Telephone: (+1) 619-544-5352
Email: infocorp@solarturbines.com
Internet: www.solarturbines.com

