

CAT[®] ATTACHMENTS

MINI HYDRAULIC EXCAVATORS

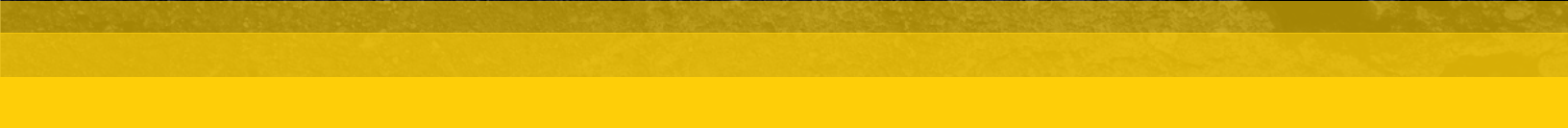




THROUGHOUT THE BROCHURE, ABBREVIATIONS WILL BE USED FOR SPACE CONSTRAINTS. STD WILL BE STANDARD, PO WILL BE FOR PIN ON, PG WILL BE PIN GRABBER, PL WILL BE FOR PIN LOCK, QD WILL BE QUICK DISCONNECT, SSL WILL BE FOR SKID STEER LOADER AND MHE WILL BE FOR MINI HYDRAULIC EXCAVATOR. PLEASE CONTACT YOUR LOCAL CAT® DEALER FOR EXACT COMPATIBILITY, AVAILABILITY AND TO REQUEST A QUOTE.

ATTACHMENT HANDBOOK INDEX

PINS	4
MACHINE HYDRAULIC CONFIGURATIONS	5
COUPLERS	6
THUMBS	14
SKID STEER LOADER (SSL) – MHE ADAPTERS	15
SSL ATTACHMENTS	15
BUCKETS	
DIGGING/GENERAL PURPOSE BUCKETS	16
DITCH CLEANING BUCKETS	19
TILTING DITCH CLEANING BUCKETS	20
NETHERLANDS STYLE DITCH CLEANING	21
CW TILTING DITCH CLEANING BUCKETS	21
DITCH CLEANING BUCKETS	22
GRADING/MUD BUCKETS	23
DIGGING/GENERAL PURPOSE BUCKETS	24
NETHERLANDS STYLE DIGGING	27
CW GENERAL PURPOSE BUCKETS	27
TRENCHING BUCKETS	28
BANANA BUCKETS	28
CEMETERY BUCKETS	29
GRADING BUCKETS	29
CLEANING BUCKETS	29
HIGH CAPACITY BUCKETS	29
HEAVY DUTY BUCKETS	30
HEAVY DUTY CAPACITY	32
BUCKET TEETH	32



NOTE Pages with yellow bars at the bottom contain parts only available in Europe, Africa and the Middle East.

	Machine Class	11.5m	15.5m	17.5m
	Width - in (mm)	47 (1200)	58 (1500)	71 (1800)
	Capacity - (m ³)	9.5 (270)	12.4 (350)	14.8 (420)
	Weight - (kg)	357 (785)	471 (1040)	570 (1250)
	Pump Number	547-2661	643-2662	547-2663
Price	€	€	€	

ATTACHMENT HANDBOOK INDEX

TILT ROTATE SYSTEMS	34
NORDIC STYLE BUCKETS	
DIGGING BUCKETS	38
GRADING BUCKETS	39
TRENCHING BUCKETS	39
MULTI-PURPOSE GRAPPLES	40
AUGERS	
DRIVE ASSEMBLIES	42
BITS	44
COMPACTION WHEELS	47
VIBRATORY PLATE COMPACTORS	51
GRAPPLES	
CONTRACTORS' GRAPPLES	53
DEMOLITION AND SORTING GRAPPLES	54
SHEARS	55
HAMMERS	
B SERIES	56
SIDE MOUNT	58
H SERIES	59
HAMMER TOOLS	60
HAMMER BRACKETS	61
COLD PLANERS	64
MULCHERS	65
FLAIL MOWERS	66
RAKES	67
RIPPERS	67
XTC ATTACHMENTS	68

MINI HYDRAULIC EXCAVATOR ATTACHMENTS

PIN COMPATABILITY

Machine Class	Pin Diameter	Legacy	Current
< 1 Ton	25 mm		300.9D
1 Ton	30 mm	301.4C, 301.5, 301.6C, 301.7D, 301.7D CR, 301.8, 301.8C	300.9D, 301.5, 301.7 CR, 301.8, 302 CR
2 Ton	35 mm	302.2D, 302.4D, 302.5C, 302.5	302.7D CR
3 – 4 Ton	40 mm	303C CR, 303E CR, 303.5C CR, 303.5D CR, 303.5E, 304D CR, 304.5E2 CR	303 CR, 303.5 CR, 304
5 – 6 Ton	45 mm	304C CR, 305C CR, 305D CR, 305E CR, 305.5D CR, 305.5E CR, 305.5E2 CR, 306E2	305 CR, 306 CR
7 – 9 Ton	50 mm	307D, 307E, 307E2 and 308D, 308E CR, 308E2 CR	307.5, 308 CR, 308 CR VAB, 309 CR, 309 CR VAB (long undercarriage)
10 Ton	60 mm		310, BHL 450

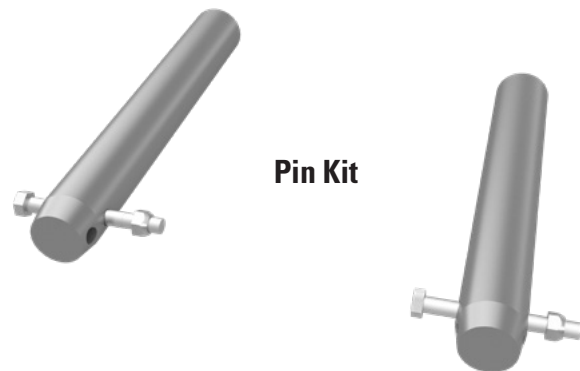
** Not all machine models are available in all regions.
Contact your local dealer for exact compatibility and availability.*

PIN KITS

Machine Class	Pin Diameter	Kit – Pins	Pin x 2	Cotter Pin x 2
< 1 Ton	25 mm	N/A	373-5697	373-5664

PIN KITS

Machine Class	Pin Diameter	Kit – Pins
< 1 Ton	25 mm	589-8455
1 Ton	30 mm	154-2672
2 Ton	35 mm	154-2683
3 – 4 Ton	40 mm	154-2638
5 – 6 Ton	45 mm	282-2785
7 – 9 Ton	50 mm	308-0324
10 Ton	60 mm	556-3635



MINI HYDRAULIC EXCAVATOR ATTACHMENTS

MACHINE HYDRAULIC CONFIGURATIONS

		Machine Configuration				Machine Setup	
Attachment Family	Attachment Model	First Aux	Second Aux	Case Drain	Electrical Harness	1-way flow	2-way flow
Augers	A11, A23, A41, A68	✓					✓
Cold Planer	PC35, PC45	✓				✓	
Compact Vibratory Plate (CVP)	CVP16, CVP28, CVP40, CVP55	✓				✓	
Demolition and Sorting Grapple	G306, G308	✓	✓				✓
Hammers	B1, B2, B4, B6, B8, B9 H35s, H45s, H55s, H65s, H80s, H95s	✓				✓	
Flail Mowers	HMF110, HMF210 HM608, HM810, HM912	✓		✓		✓	
Mulchers	HM208, HM210	✓		✓	✓	✓	
Tilting Ditch Cleaning Buckets	All	✓					✓
Scrap Shear	S308	✓	✓				✓
Tilt Rotate System	TRS4	✓			✓	✓	
Tilt Rotate Systems	TRS6, TRS8	✓		✓	✓	✓	
Thumbs	Hydraulic	✓					✓

MINI HYDRAULIC EXCAVATOR ATTACHMENTS



Cat Dual Lock™ Pin Grabber couplers allow operators to change attachments in seconds, increasing job efficiency and enabling one machine to do multiple tasks. We offer two, easy-to-use options: mechanical and hydraulic (controlled from the cab). All Cat models include primary and secondary locking systems to ensure that what you put on your machine, stays on your machine.



**Dual Lock™
Mechanical Quick Couplers
Pin Grabber**

DUAL LOCK™ MECHANICAL QUICK COUPLERS					PIN ON
Machine Class	1 Ton	2 Ton	3 – 4 Ton	5 – 6 Ton	7 – 9 Ton
Interface Type – Top	Pin On	Pin On	Pin On	Pin On	Pin On
Interface Type – Bottom	Pin Grabber	Pin Grabber	Pin Grabber	Pin Grabber	Pin Grabber
Pin Diameter – mm (in)	30 (1.2)	35 (1.4)	40 (1.6)	45 (1.8)	50 (2)
Overall Height – mm (in)	179 (7)	192 (8)	221 (9)	292 (12)	370 (15)
Length – mm (in)	297 (12)	358 (14)	429 (17)	528 (21)	591 (23)
Width – mm (in)	182 (7)	240 (9)	269 (11)	298 (12)	292 (12)
Weight – kg (lb)	16 (35)	17 (38)	37 (82)	56 (124)	89 (196)
Part Number	361-1092	361-1093	444-7494	444-7496	444-7498

DUAL LOCK HYDRAULIC QUICK COUPLERS				PIN ON
Machine Class	3 – 4 Ton	5 – 6 Ton	7 – 9 Ton	10 Ton
Interface Type – Top	Pin On	Pin On	Pin On	Pin On
Interface Type – Bottom	Pin Grabber	Pin Grabber	Pin Grabber	Pin Grabber
Pin Diameter – mm (in)	40 (1.6)	45 (1.8)	50 (2)	60 (2.4)
Overall Height – mm (in)	266 (11)	272 (11)	347 (14)	348 (14)
Length – mm (in)	423 (17)	528 (21)	595 (23)	775 (31)
Width – mm (in)	252 (10)	272 (11)	370 (15)	379 (15)
Weight – kg (lb)	41 (90)	77 (170)	96 (212)	153 (337)
Part Number	485-5300	485-5301	485-5302	485-5306

**Dual Lock
Hydraulic
Quick Couplers
Pin Grabber**





Mini Excavator Tilting Dual Lock Pin Grabber Couplers allow work tools to be changed quickly, improving overall production and increasing machine versatility. The Tilting Dual Lock Coupler maintains a tight fit with an innovative wedge design throughout the life of the coupler. It can be used with compatible pin-on work tools and in front shovel mode with buckets.



**Tilting Dual Lock
Pin Grabber Hydraulic
Quick Couplers**

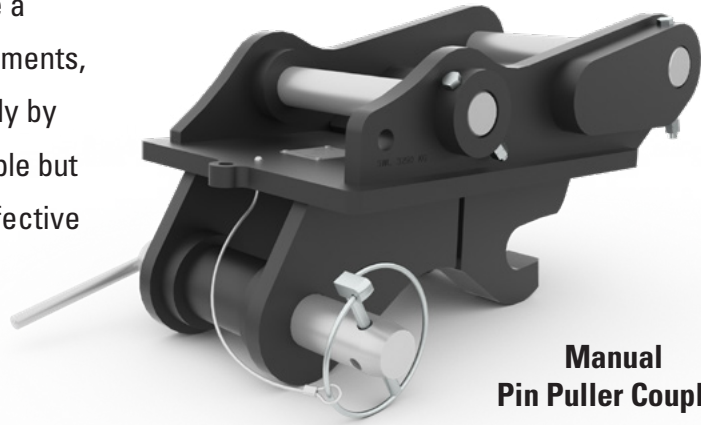


TILTING DUAL LOCK HYD QUICK COUPLERS	PIN ON	
	5 – 6 Ton	7 – 9 Ton
Machine Class	5 – 6 Ton	7 – 9 Ton
Interface Type – Top	Pin On	Pin On
Interface Type – Bottom	Pin Grabber	Pin Grabber
Pin Diameter – mm (in)	45 (1.8)	50 (2)
Overall Height – mm (in)	546 (22)	601 (24)
Length – mm (in)	574 (23)	622 (25)
Width – mm (in)	298 (12)	370 (15)
Weight – kg (lb)	116 (256)	203 (448)
Part Number	485-5304*	485-5305*

**Not for use with thumbs.*

MINI HYDRAULIC EXCAVATOR ATTACHMENTS

Manual Pin Puller Couplers are a cost effective solution for switching out attachments, allowing them to be changed quickly and easily by hand by removing and replacing one pin – simple but secure. Pin puller couplers also offer a cost effective solution for switching out attachments on Cat backhoe loaders not equipped with auxiliary hydraulics.



**Manual
Pin Puller Coupler**

MANUAL PIN PULLER COUPLERS	PIN ON					
Machine Class	1 – Ton	2 – Ton	3 – 4 Ton	5 – 6 Ton	5 – 6 Ton	7 – 9 Ton
Width – mm (in)	230 (9)	285 (11)	298 (12)	300 (12)	325 (13)	390 (15)
Overall Height – mm (in)	181 (7)	210 (8)	245 (10)	253 (10)	298 (12)	332 (13)
Length – mm (in)	286 (11)	363 (14)	412 (16)	520 (21)	587 (23)	628 (25)
Weight – kg (lb)	15 (32)	28 (61)	35 (78)	48 (106)	54 (118)	94 (207)
Pin Diameter (Top Interface) – mm (in)	30 (1.2)	35 (1.4)	40 (1.6)	45 (1.8)	45 (1.8)	50 (2.0)
Coupler Type (Bottom Interface)	1 Ton	2 Ton	3 – 4 Ton	3 – 4 Ton	5 – 6 Ton	7 – 9 Ton
Pin Diameter (Bottom Interface) – mm (in)	30 (1.2)	35 (1.4)	40 (1.6)	45 (1.8)	45 (1.8)	50 (2.0)
Eyelet Safe Working Load– kg (lb)	1500 (3307)	1500 (3307)	1500 (3307)	1500 (3307)	1500 (3307)	3250 (7165)
Part Number	563-2200	563-2201	563-2202	563-2203	563-2204	563-2205



**Pin Lock
Manual Couplers**

Fully compatible with Wain-Roy and Gannon-style buckets, the Cat Pin Lock/Tilt Lock Coupler system

is the key to new levels of performance on any Cat mini excavator. New machines can take advantage of existing bucket inventory. New buckets and work tools can be shared with similarly sized competitive machines across a fleet. With the Cat Pin Lock/Tilt Lock Coupler system, one machine can fill many roles on a job site.

PIN LOCK MANUAL COUPLERS	7 – 9 Ton	PIN ON
Machine Class	7 – 9 Ton	10 Ton
Interface Type – Top	Pin On	Pin On
Interface Type – Bottom	¼ yd	½ yd
Pin Diameter – mm (in)	50 (2)	60 (2.4)
Overall Height – mm (in)	406 (16)	517 (20)
Length – mm (in)	660 (26)	806 (32)
Width – mm (in)	347 (14)	368 (15)
Weight – kg (lb)	79 (174)	111 (245)
Part Number	485-0314	527-6691



MINI HYDRAULIC EXCAVATOR ATTACHMENTS

S Type Couplers for Mini Excavators are an optimal design

for a dedicated quick coupler solution. Low offset, Pin Grabber ability, and a wedge type locking system all ensure a tight fit with no attachment play during use. It also creates the solution to exchange work tools among different platforms and brands. In combination with the Tilt Rotate System which can be equipped with an S Type Coupler, plus the variety of different buckets offered, it provides a complete attachment solution for mini excavators.



**S Type Hydraulic
Quick Couplers**

S TYPE HYDRAULIC QUICK COUPLERS				PIN ON
Machine Class	3 – 4 Ton	5 – 6 Ton	7 – 9 Ton	10 Ton
Interface Type – Top	Pin On	Pin On	Pin On	Pin On
Interface Type – Bottom	S40	S40	S50	S50
Hydraulic Locking Control System	Yes	Yes	Yes	Yes
Pin Diameter – mm (in)	40 (1.6)	45 (1.8)	50 (2)	60 (2.4)
Overall Height – mm (in)	262 (10)	271 (11)	318 (13)	330 (13)
Length – mm (in)	470 (19)	496 (20)	630 (25)	689 (27)
Width – mm (in)	254 (10)	281 (11)	343 (14)	353 (14)
Weight – kg (lb)	43 (95)	49 (108)	89 (197)	98 (215)
Hook Capacity – kg (lb)	2000 (4409)	2000 (4409)	3000 (6614)	3000 (6614)
Part Number	576-1205	576-1207	576-1201	576-1203

S TYPE HYDRAULIC QUICK COUPLERS		S45
Machine Class	7 – 9 Ton	10 Tons
Interface Type – Top	Pin On	Pin On
Interface Type – Bottom	S45	S45
Coupler Type	Hydraulic	Hydraulic
Lifting Hook	Yes	Yes
Lifting Hook Capacity – kg (lb)	3000 (6614)	3000 (6614)
Pin Diameter – mm (in)	50 (2)	60 (2.4)
Overall Height – mm (in)	319 (13)	330 (13)
Length – mm (in)	630 (25)	689 (27)
Width – mm (in)	343 (14)	353 (14)
Weight – kg (lb)	95 (209)	102 (225)
Part Number	576-1210	576-1211

CW Quick Couplers increase the utilization

of an excavator by becoming an all-purpose tool carrier. Simply release one work tool attachment and pick up another in a matter of seconds. Available in hydraulic or mechanical (spindle) versions.



QUICK COUPLERS				CW-05
Machine Class	1 Ton	1 Ton	1 Ton	1 Ton
Interface Type – Top	Pin On	Pin On	Pin On	Pin On
Interface Type – Bottom	CW-05	CW-05	CW-05	CW-05
Coupler Type	Mechanical	Mechanical	Hydraulic	Hydraulic
Lifting Hook	No	Yes	No	Yes
Lifting Hook Capacity – kg (lb)	N/A	600 (1323)	N/A	600 (1323)
Pin Diameter – mm (in)	30 (1.2)	30 (1.2)	30 (1.2)	30 (1.2)
Overall Height – mm (in)	239 (9)	239 (9)	239 (9)	239 (9)
Length – mm (in)	349 (14)	439 (17)	355 (14)	439 (17)
Width – mm (in)	235 (9)	235 (9)	235 (9)	235 (9)
Weight – kg (lb)	21 (46)	25 (55)	22 (49)	27 (59)
Part Number	589-8421	589-8424	525-4593	525-4596

QUICK COUPLERS					CW-05			
Machine Class	2 Ton	2 Ton	2 Ton	2 Ton	3 – 4 Ton	3 – 4 Ton	3 – 4 Ton	3 – 4 Ton
Interface Type – Top	Pin On	Pin On	Pin On	Pin On	Pin On	Pin On	Pin On	Pin On
Interface Type – Bottom	CW-05	CW-05	CW-05	CW-05	CW-05	CW-05	CW-05	CW-05
Coupler Type	Mechanical	Mechanical	Hydraulic	Hydraulic	Mechanical	Mechanical	Hydraulic	Hydraulic
Lifting Hook	No	Yes	No	Yes	No	Yes	No	Yes
Lifting Hook Capacity – kg (lb)	N/A	600 (1323)	N/A	600 (1323)	N/A	600 (1323)	N/A	600 (1323)
Pin Diameter – mm (in)	35 (1.4)	35 (1.4)	35 (1.4)	35 (1.4)	40 (1.6)	40 (1.6)	30 (1.2)	30 (1.2)
Overall Height – mm (in)	244 (10)	244 (10)	244 (10)	244 (10)	251 (10)	251 (10)	239 (9)	251 (10)
Length – mm (in)	355 (14)	443 (17)	362 (14)	443 (17)	376 (15)	462 (18)	439 (17)	462 (18)
Width – mm (in)	235 (9)	248 (10)	248 (10)	248 (10)	235 (9)	262 (10)	235 (9)	262 (10)
Weight – kg (lb)	25 (55)	29 (64)	26 (57)	30 (66)	25 (55)	29 (64)	26 (57)	30 (66)
Part Number	589-8422	589-8425	525-4594	525-4597	589-8423	589-8426	525-4595	525-4598

KIT – SHAFT RETROFIT CW05

Part Number	594-2024
-------------	----------

KIT – WEDGE RETROFIT CW05

Part Number	596-8027
-------------	----------

MINI HYDRAULIC EXCAVATOR ATTACHMENTS

QUICK COUPLERS							CW-10
Machine Class	3 – 4 Ton	3 – 4 Ton	3 – 4 Ton	3 – 4 Ton	5 – 6 Ton	5 – 6 Ton	5 – 6 Ton
Interface Type – Top	Pin-On	Pin-On	Pin-On	Pin-On	Pin-On	Pin-On	Pin-On
Interface Type – Bottom	CW-10	CW-10	CW-10	CW-10	CW-10	CW-10	CW-10
Coupler Type	Mechanical	Mechanical	Hydraulic	Hydraulic	Mechanical	Mechanical	Hydraulic
Lifting Hook	No	Yes	No	Yes	No	Yes	Yes
Lifting Hook Capacity – kg (lb)	—	1400 (3087)	—	1400 (3087)	—	1400 (3087)	1400 (3087)
Pin Diameter – mm (in)	40 (1.6)	40 (1.6)	40 (1.6)	40 (1.6)	45 (1.8)	45 (1.8)	45 (1.8)
Overall Height – mm (in)	320 (13)	320 (13)	317 (13)	317 (13)	331 (13)	331 (13)	308 (12)
Length – mm (in)	490 (19)	593 (23)	486 (19)	592 (23)	506 (20)	608 (24)	608 (24)
Width – mm (in)	382 (15)	382 (15)	305 (12)	382 (15)	305 (12)	382 (15)	382 (15)
Weight – kg (lb)	60 (132)	68 (150)	60 (132)	68 (150)	61 (135)	70 (154)	70 (154)
Part Number	525-4605	525-4608	525-4611	525-4613	525-4606	525-4609	525-4614

QUICK COUPLERS						CW-10
Machine Class	7 – 9 Ton	7 – 9 Ton	7 – 9 Ton	7 – 9 Ton	10 Ton	10 Ton
Interface Type – Top	Pin-On	Pin-On	Pin-On	Pin-On	Pin-On	Pin-On
Interface Type – Bottom	CW-10	CW-10	CW-10	CW-10	CW-10	CW-10
Coupler Type	Mechanical	Mechanical	Hydraulic	Hydraulic	Hydraulic	Hydraulic
Lifting Hook	No	Yes	No	Yes	No	Yes
Lifting Hook Capacity – kg (lb)	—	1400 (3087)	—	1400 (3087)	—	1400 (3087)
Pin Diameter – mm (in)	50 (2)	50 (2)	50 (2)	50 (2)	60 (2.4)	60 (2.4)
Overall Height – mm (in)	331 (13)	331 (13)	330 (13)	330 (13)	423 (17)	347 (14)
Length – mm (in)	527 (21)	635 (25)	524 (21)	635 (25)	706 (28)	738 (29)
Width – mm (in)	305 (12)	382 (15)	382 (15)	382 (15)	382 (15)	382 (15)
Weight – kg (lb)	74 (163)	83 (183)	75 (165)	83 (183)	84 (185)	92 (203)
Part Number	525-4607	525-4610	525-4612	525-4615	542-5450	618-6492

MINI HYDRAULIC EXCAVATOR ATTACHMENTS

KIT – QUICK COUPLER – 3 LINES						PIN GRABBER
Machine Model	303	303.5	304	304	305	305
Stick	Long	Long	Long	Standard	Long	Standard
Part Number	602-8737	602-8739	606-3625	606-3624	606-3623	606-3622

LINES – HYDRAULIC QUICK COUPLER S40	
Machine Class	3 – 6 Ton
Part Number	576-1195*

*Requires quick coupler lines on the machine.

KIT – CONTROL, QUICK COUPLER			CW-10/S40
Machine Model	306	306	310
Stick	Standard	Long	Long
Part Number	581-3795	581-3796	561-8203

KIT – QUICK COUPLER – 2 LINES (LONG STICK)							CW-05/S40
Machine Model	301.5	301.6	301.7	301.8	302	303	303.5
Stick	Long	Long	Long	Long	Long	Long	Long
Part Number	611-4834	611-4835	611-4836	611-4837	611-4838	602-8732*	602-8733*

*For use with CW05 or S40.

KIT – CONTROL, QUICK COUPLER			CW-10/S50
Machine Class	8 – 9 Tons	8 – 9 Ton	7 Ton
Stick	Standard	Long	Standard
Part Number	561-8200	561-8201	561-8202

KIT – HYDRAULIC QUICK COUPLER LINES CW-05	
Machine Model	302.7
Part Number	602-8730

KIT – HYDRAULIC QUICK COUPLER LINES S45/S50	
Machine Class	7 – 9 Ton
Part Number	567-1164
	576-1165

MINI HYDRAULIC EXCAVATOR ATTACHMENTS

Cat Thumbs are versatile tools designed to work with Cat mini hydraulic excavator buckets to easily grab, pick up, handle and load irregular or loose material such as poles, brush, metal, trash, rock and more which would otherwise be difficult to handle with only a bucket.



THUMBS – HYDRAULIC				PIN ON
Machine Class	1 Ton	2 Ton	3 – 4 Ton	5 – 6 Ton
Part Number	555-8424*	451-6380	452-2740	575-0496

**For use with 18" buckets and larger. Not for use with 301.4C or quick couplers other than PG Dual Lock QC.*

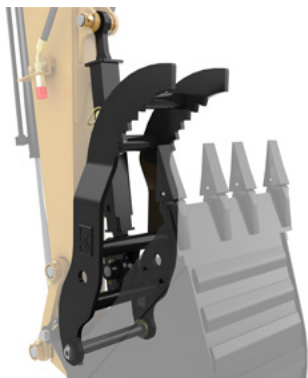
BRACKET	PIN ON
Machine Class	2 Ton
Interface Type	Pin On
Part Number	204-4972



MOUNTING BRACKET
Required for all thumbs and grapples without thumb ready sticks.



THUMBS – HYDRAULIC				PIN ON/PIN GRABBER	
Machine Class	7 – 9 Ton	7 – 9 Ton	7 – 9 Ton	7 – 9 Ton	10 Ton
Hydraulic Pin-On	Pin On	Pin Grabber	Pin On	Pin Grabber	Pin On
Link Style	No	No	Yes	Yes	No
Part Number	620-7655	620-7656	305-6744	305-6745	540-6735



THUMBS – STIFF LINK		PIN ON/PIN GRABBER
Machine Class	7 – 9 Ton	7 – 9 Ton
Hydraulic Pin-On	Pin On	Pin Grabber
Part Number	620-7657	620-7658

Cat Skid Steer Adapters allow connecting recommended skid steer interface attachments. Adapters are available for both mini hydraulic excavators and compact wheel loaders to allow tool sharing across different machine families.



**Adapters
SSL to MHE**

ADAPTERS – SSL TO MHE			PIN ON
Machine Class	3 – 4 Ton	5 – 6 Ton	7 – 9 Ton
Height – mm (in)	505 (20)	557 (22)	557 (22)
Width – mm (in)	1125 (44)	1125 (44)	1125 (44)
Length – mm (in)	463 (18)	476 (19)	505 (20)
Weight – kg (lb)	112 (247)	119 (262)	141 (311)
Interface type	Pin On	Pin On	Pin On
Coupler Type	SSL Coupler	SSL Coupler	SSL Coupler
Part Number	525-5854	542-7262	542-7263

*Buckets approved
for use with
SSL interface adapter*



**General Purpose Buckets
with Bolt-On Cutting Edge**



**General Purpose Buckets
with Bolt-On Teeth**

GENERAL PURPOSE BUCKETS WITH BASE EDGE					SSL
Width – mm (in)	1576 (62)	1730 (68)	1883 (74)	2036 (80)	2188 (86)
Capacity – m ³ (yd ³)	0.4 (0.5)	0.4 (0.5)	0.4 (0.6)	0.5 (0.6)	0.6 (0.8)
Height – mm (in)	426 (17)	426 (17)	426 (17)	426 (17)	469 (19)
Length – mm (in)	708 (28)	708 (28)	708 (28)	708 (28)	797 (31)
Weight – kg (lb)	170 (375)	216 (476)	234 (516)	247 (545)	288 (635)
Part Number	279-5364	279-5368	279-5372	279-5376	292-9270

GENERAL PURPOSE BUCKETS WITH BOLT-ON CUTTING EDGE					SSL
Width – mm (in)	1576 (62)	1730 (68)	1883 (74)	2036 (80)	2188 (86)
Capacity – m ³ (yd ³)	0.4 (0.5)	0.4 (0.5)	0.4 (0.6)	0.5 (0.6)	0.6 (0.8)
Height – mm (in)	426 (17)	426 (17)	426 (17)	426 (17)	469 (19)
Length – mm (in)	708 (28)	708 (28)	708 (28)	708 (28)	797 (31)
Weight – kg (lb)	200 (441)	250 (551)	271 (598)	286 (631)	328 (723)
Part Number	279-5365	279-5369*	279-5373*	279-5377**	296-8192**

GENERAL PURPOSE BUCKETS WITH BOLT-ON TEETH					SSL
Width – mm (in)	1576 (62)	1730 (68)	1883 (74)	2036 (80)	2188 (86)
Capacity – m ³ (yd ³)	0.4 (0.5)	0.4 (0.5)	0.4 (0.6)	0.5 (0.6)	0.6 (0.8)
Height – mm (in)	426 (17)	426 (17)	426 (17)	426 (17)	469 (19)
Length – mm (in)	708 (28)	708 (28)	708 (28)	708 (28)	797 (31)
Weight – kg (lb)	185 (408)	231 (509)	249 (549)	264 (582)	304 (670)
Part Number	279-5366	279-5370*	279-5374*	279-5378**	296-8191**

* 5–6 tons and up. ** 7–9 tons and up.

MINI HYDRAULIC EXCAVATOR ATTACHMENTS



The shape of Cat buckets improves digging, loading and material retention. Each bucket is made of high-strength, tempered steel. Select from a range of bucket teeth. Pin on buckets can be used in combination with applicable pin-grabber quick coupler.

DIGGING BUCKETS/GENERAL PURPOSE	PIN ON	
Machine Class	< 1 Ton	< 1 Ton
Width – mm (in)	250 (10)	370 (15)
Capacity – L (ft ³)	14 (0.5)	23 (0.8)
Weight – kg (lb)	21 (46)	26 (57)
Number of Teeth	3	3
Part Number	589-8430	589-8440



**Digging/
General Purpose
Bucket**

DIGGING/GENERAL PURPOSE BUCKETS	PIN ON					
Machine Class	1 Ton	1 Ton	1 Ton	1 Ton	1 Ton	1 Ton
Width – mm (in)	230 (9)	300 (12)	400 (16)	460 (18)	500 (20)	600 (24)
Capacity – L (ft ³)	17 (0.6)	23 (0.8)	34 (1.2)	40 (1.4)	45 (1.6)	57 (2.0)
Weight – kg (lb)	29 (65)	31 (67)	35 (78)	38 (84)	41 (90)	45 (100)
Number of Teeth	3	3	3	3	4	4
Part Number	147-1014	147-1018	147-1020	190-7387	147-1023	147-1026

DIGGING/GENERAL PURPOSE BUCKETS	PIN ON						
Machine Class	2 Ton	2 Ton	2 Ton	2 Ton	2 Ton	2 Ton	2 Ton
Width – mm (in)	260 (10)	300 (12)	400 (16)	460 (18)	500 (20)	600 (24)	700 (28)
Capacity – L (ft ³)	28 (1.0)	34 (1.2)	45 (1.6)	54 (1.9)	60 (2.1)	76 (2.7)	92 (3.2)
Weight – kg (lb)	47 (103)	46 (101)	50 (111)	54 (119)	59 (129)	65 (143)	71 (156)
Number of Teeth	3	3	3	3	4	4	4
Part Number	396-9302	396-9303	396-9304	396-9305	396-9306	396-9307	396-9308

DIGGING/GENERAL PURPOSE BUCKETS EXCLUDING 302.2D OR 302.4D*	PIN ON						
Machine Class	2 Ton	2 Ton	2 Ton	2 Ton	2 Ton	2 Ton	2 Ton
Width – mm (in)	260 (10)	300 (12)	400 (16)	460 (18)	500 (20)	600 (24)	700 (28)
Capacity – L (ft ³)	34 (1.2)	40 (1.4)	54 (1.9)	65 (2.3)	74 (2.6)	91 (3.2)	111 (3.9)
Weight – kg (lb)	51 (112)	51 (111)	55 (121)	59 (130)	64 (140)	71 (155)	77 (170)
Number of Teeth	3	3	3	3	4	4	4
Part Number	176-7283	153-7851	153-7854	190-7390	153-7857	153-7860	190-7391

*Buckets cannot be used with 302.2D and 302.4D because they will contact machine stick.

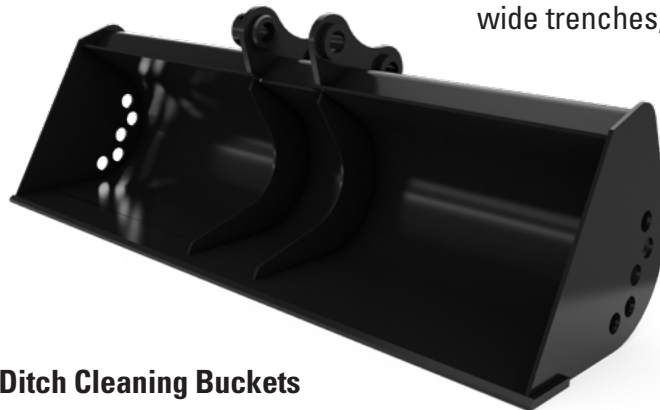
MINI HYDRAULIC EXCAVATOR ATTACHMENTS



DIGGING/GENERAL PURPOSE BUCKETS						PIN ON
Machine Class	3 Ton	3 Ton	3 Ton	3 Ton	3 Ton	3 Ton
Interface Type	Pin-On	Pin-On	Pin-On	Pin-On	Pin-On	Pin-On
Width – mm (in)	300 (12)	400 (16)	460 (18)	500 (20)	600 (24)	750 (30)
Capacity – L (ft ³)	50 (1.8)	70 (2.5)	80 (2.8)	90 (3.2)	120 (4.2)	160 (5.7)
Weight – kg (lb)	56 (124)	61 (135)	66 (146)	71 (157)	79 (174)	91 (201)
Number of Teeth	3	3	3	4	4	4
Part Number	279-4312	281-3824	279-4320	279-4313	281-1551	279-4321

DIGGING/GENERAL PURPOSE BUCKETS							PIN ON
Machine Class	5 – 6 Ton	5 – 6 Ton	5 – 6 Ton	5 – 6 Ton	5 – 6 Ton	5 – 6 Ton	5 – 6 Ton
Interface Type	Pin-On	Pin-On	Pin-On	Pin-On	Pin-On	Pin-On	Pin-On
Width – mm (in)	300 (12)	400 (16)	460 (18)	500 (20)	600 (24)	750 (30)	900 (35)
Capacity – L (ft ³)	60 (2.1)	80 (2.8)	90 (3.2)	100 (3.5)	130 (4.6)	170 (6)	210 (7.4)
Weight – kg (lb)	79 (174)	78 (172)	84 (185)	92 (203)	102 (225)	117 (258)	142 (313)
Number of Teeth	3	3	3	4	—	4	6
Part Number	276-7370	276-7378	279-4283	279-4287	249-4260	279-4291	279-4295

Ditch Cleaning Buckets are ideal for cleaning wide trenches, loading materials, slope cutting, grading and finishing work in construction, landscaping and road maintenance applications.



Ditch Cleaning Buckets

DITCH CLEANING BUCKETS				PIN ON		
Machine Class	< 1 Ton	1 Ton	1 Ton	2 Ton	2 Ton	2 Ton
Width – mm (in)	700 (28)	800 (32)	1000 (39)	800 (32)	1000 (39)	1200 (47)
Capacity – L (ft³)	28 (1.0)	43 (1.5)	57 (2.0)	79 (2.8)	102 (3.6)	116 (4.1)
Weight – kg (lb)	24 (53)	41 (89)	43 (94)	81 (180)	78 (172)	88 (193)
Part Number	589-8450	147-1029	147-1031	153-7863	153-7865	153-7867

DITCH CLEANING BUCKETS			PIN ON	
Machine Class	3 – 4 Ton	3 – 4 Ton	3 – 4 Ton	3 – 4 Ton
Width – mm (in)	1000 (39)	1200 (47)	1400 (55)	1200 (47)
Capacity – L (ft³)	136 (4.8)	167 (5.9)	197 (7)	159 (5.6)
Weight – kg (lb)	109 (240)	107 (236)	118 (259)	162 (358)
Part Number	279-4322	279-4323	282-9315	621-0448

DITCH CLEANING BUCKETS		PIN ON	
Machine Class	5 – 6 Ton	5 – 6 Ton	5 – 6 Ton
Width – mm (in)	1000 (39)	1300 (51)	1600 (63)
Capacity – L (ft³)	170 (6)	220.3 (7.8)	280 (9.9)
Weight – kg (lb)	117 (259)	118 (261)	139 (307)
Part Number	279-4326	279-4327	279-4328



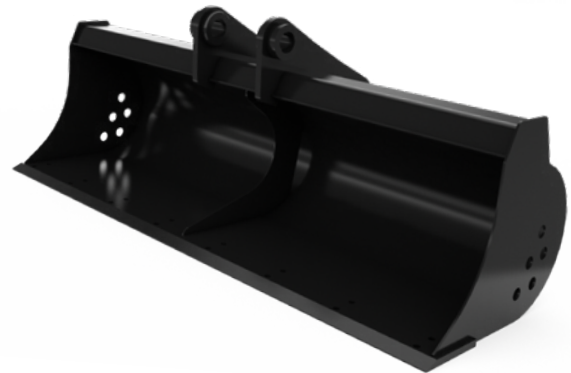
MINI HYDRAULIC EXCAVATOR ATTACHMENTS

DITCH CLEANING BUCKETS					PIN ON
Machine Class	7 – 9 Ton	7 – 9 Ton	7 – 9 Ton	7 – 9 Ton	7 – 9 Ton
Width – mm (in)	1219 (48)	1372 (54)	1500 (59)	1524 (60)	1800 (71)
Capacity – L (ft³)	329 (11.6)	375 (13.2)	240 (8.5)	421 (14.8)	300 (10.6)
Weight – kg (lb)	216 (477)	235 (517)	145 (320)	253 (557)	166 (366)
Part Number	306-5664	306-5662	310-2963*	306-5660	310-2965*

* Only available in Europe, Africa and the Middle East.

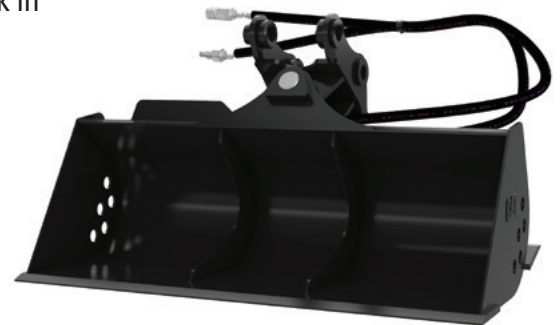


DITCH CLEANING BUCKETS			PIN ON
Machine Class	10 Ton	10 Ton	10 Ton
Width – mm (in)	1200 (47)	1500 (59)	1800 (71)
Capacity – L (ft³)	270 (9.5)	350 (12.4)	420 (14.8)
Weight – kg (lb)	162 (357)	189 (417)	216 (476)
Part Number	547-7081	547-7082	547-7083



Tilting Ditch Cleaning Buckets are ideal for cleaning wide trenches, loading materials, slope cutting, grading and finishing work in construction, landscaping and road maintenance applications.

TILTING DITCH CLEANING BUCKET					PIN ON
Machine Class	1 Ton	2 Ton	3 – 4 Ton	5 – 6 Ton	5 – 6 Ton
Width – mm (in)	1000 (39)	1100 (43)	1200 (47)	1200 (47)	1600 (63)
Capacity – L (ft³)	56 (2)	110 (3.9)	167 (5.9)	210 (7.2)	279 (9.9)
Weight – kg (lb)	52 (115)	133 (294)	194 (428)	228 (503)	275 (606)
Part Number	244-3073	246-0094	621-0448	618-0055	621-0447



Tilting Ditch Cleaning Bucket

TILTING DITCH CLEANING BUCKET				PIN ON
Machine Class	7 – 9 Ton	7 – 9 Ton	10 Ton	10 Ton
Width – mm (in)	1200 (48)	1500 (60)	1200 (48)	1500 (60)
Capacity – L (ft³)	360 (12.9)	460 (16.4)	360 (12.9)	460 (16.4)
Weight – kg (lb)	474 (1045)	545 (1202)	493 (1087)	562 (1239)
Part Number	526-2515	614-2445	568-9143	612-2450



**Netherlands Style
Ditch Cleaning Bucket**



NETHERLANDS STYLE DITCH CLEANING BUCKET

CW

Machine Class	1 Ton	2 Ton	3 – 4 Ton	5 – 6 Ton	5 – 6 Ton	7 – 9 Ton
Interface Type	CW-05	CW-05	CW-05	CW-10	CW-10	CW-10
Width – mm (in)	1000 (39)	1200 (47)	1200 (47)	1200 (47)	1400 (55)	1600 (63)
Capacity – L (ft ³)	99 (3.5)	131 (4.6)	184 (6.5)	238 (8.4)	284 (10)	396 (14)
Weight – kg (lb)	62 (137)	93 (205)	115 (254)	147 (324)	165 (364)	234 (516)
Part Number	525-4577	525-4578	525-4579	525-4580	525-4581	525-4582



Tilting Ditch Cleaning Bucket

TILTING DITCH CLEANING BUCKET

CW

Machine Class	1 Ton	2 Ton	3 – 4 Ton	3 – 4 Ton	5 – 6 Ton
Interface Type	CW-05	CW-05	CW-05	CW-10	CW-10
Width – mm (in)	1000 (39)	1100 (43)	1200 (47)	1200 (47)	1500 (59)
Capacity – L (ft ³)	56 (2)	125 (4.4)	133 (4.7)	133 (4.7)	177 (6.3)
Weight – kg (lb)	84 (185)	140 (309)	194 (428)	194 (428)	260 (573)
Part Number	244-3080	246-0093	621-0450	617-9620	621-0449

MINI HYDRAULIC EXCAVATOR ATTACHMENTS



DITCH CLEANING BUCKET CW-05

Machine Class	1 Ton	2 Ton	2 Ton
Width – mm (in)	1000 (39)	1000 (39)	1200 (47)
Capacity – L (ft³)	96 (3.4)	125 (4.4)	154 (5.4)
Weight – kg (lb)	61 (135)	80 (176)	93 (205)
Part Number	521-8511	521-8512	521-8513



DITCH CLEANING BUCKET CW-10

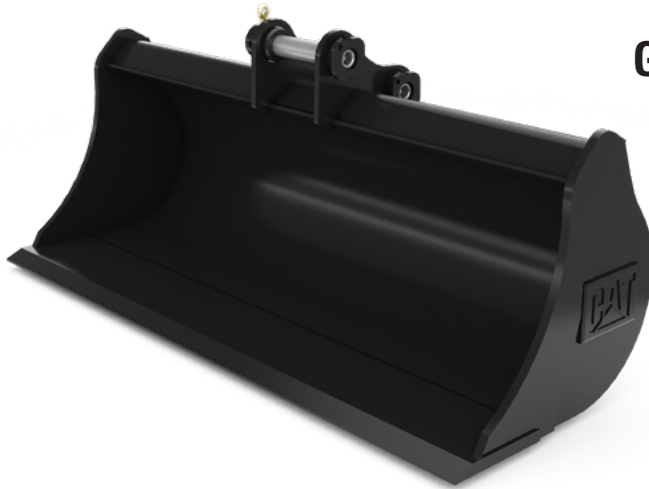
Machine Class	5 – 6 Ton	7 – 9 Ton	7 – 9 Ton
Width – mm (in)	1400 (55)	1600 (63)	1800 (71)
Capacity – L (ft³)	254 (9)	447 (15.8)	507 (17.9)
Weight – kg (lb)	154 (340)	275 (606)	295 (650)
Part Number	542-5458	525-4558	525-4559



DITCH CLEANING BUCKET CW-10

Machine Class	10 Ton	10 Ton
Width – mm (in)	1600 (63)	1800 (71)
Capacity – L (ft³)	447(15.8)	507 (17.9)
Weight – kg (lb)	275 (606)	295 (650)
Part Number	525-4558	525-4559





Grading Buckets are designed to provide optimum grading, trenching, slope-cutting and finishing work in addition to nesting additional buckets for ease of transportation.

Grading/Mud Bucket

GRADING/MUD BUCKET					PIN ON
Machine Class	1 Ton	2 Ton	3 – 4 Ton	5 – 6 Ton	5 – 6 Ton
Width – mm (in)	1000 (39)	1000 (39)	1200 (47)	1200 (47)	1500 (59)
Capacity – L (ft ³)	88.1 (3.1)	173 (6.1)	232 (8.2)	260 (9.2)	330 (11.6)
Weight – kg (lb)	58 (128)	82 (181)	173 (381)	186 (411)	223 (491)
Part Number	388-9661	388-9662	388-9663	388-9664	388-9665

GRADING/MUD BUCKET					PIN ON
Machine Class	7 – 9 Ton	7 – 9 Ton	10 Ton	10 Ton	10 Ton
Width – mm (in)	1200 (47)	1500 (59)	1200 (47)	1500 (59)	1800 (71)
Capacity – L (ft ³)	411 (14.5)	521 (18.4)	430 (15.2)	560 (19.8)	680 (24)
Weight – kg (lb)	279 (615)	346 (762)	320 (706)	373 (822)	425 (937)
Part Number	388-9666	388-9667	547-7084	547-7085	547-7086

MINI HYDRAULIC EXCAVATOR ATTACHMENTS

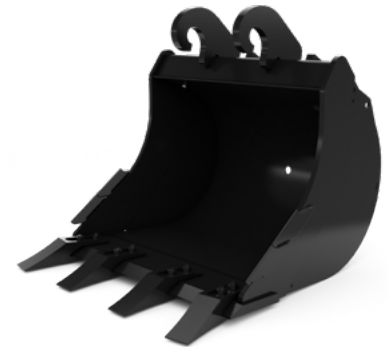
DIGGING/GENERAL PURPOSE BUCKETS WITH BOLT-ON TEETH					CW-05
Machine Class	1 Ton	1 Ton	1 Ton	1 Ton	1 Ton
Width – mm (in)	300 (12)	400 (16)	450 (18)	500 (20)	600 (24)
Capacity – L (ft³)	25 (0.9)	37 (1.3)	43 (1.5)	49 (1.7)	61 (2.2)
Weight – kg (lb)	32 (71)	36 (79)	39 (86)	42 (93)	47 (104)
Number of Teeth	3	3	3	4	4
Part Number	521-8494	521-8495	521-8496	521-8497	521-8498



DIGGING/GENERAL PURPOSE BUCKETS WITH BOLT-ON TEETH						CW-05
Machine Class	2 Ton	2 Ton	2 Ton	2 Ton	2 Ton	2 Ton
Width – mm (in)	300 (12)	400 (16)	450 (18)	500 (20)	600 (24)	700 (28)
Capacity – L (ft³)	33 (1.2)	48 (1.7)	56 (2)	65 (2.3)	82 (2.9)	100 (3.5)
Weight – kg (lb)	39 (86)	45 (99)	48 (106)	52 (115)	58 (128)	66 (146)
Number of Teeth	3	3	3	4	4	5
Part Number	521-8499	521-8500	521-8501	521-8502	521-8503	521-8504



DIGGING/GENERAL PURPOSE BUCKETS WITH BOLT-ON TEETH						CW-05
Machine Class	3 – 4 Ton	3 – 4 Ton	3 – 4 Ton	3 – 4 Ton	3 – 4 Ton	3 – 4 Ton
Width – mm (in)	300 (12)	400 (16)	450 (18)	500 (20)	600 (24)	700 (28)
Capacity – L (ft³)	41 (1.4)	61 (2.2)	72 (2.5)	82 (2.9)	105 (3.7)	127 (4.5)
Weight – kg (lb)	51 (112)	59 (130)	63 (139)	69 (152)	77 (170)	87 (192)
Number of Teeth	3	3	3	4	4	5
Part Number	521-8505	521-8506	521-8507	521-8508	521-8509	521-8510



DIGGING/GENERAL PURPOSE BUCKETS WITH BOLT-ON TEETH						CW-10
Machine Class	5 – 6 Ton	5 – 6 Ton	5 – 6 Ton	5 – 6 Ton	5 – 6 Ton	5 – 6 Ton
Width – mm (in)	300 (12)	400 (16)	450 (18)	500 (20)	600 (24)	700 (28)
Capacity – L (ft³)	68 (2.4)	101 (3.6)	118 (4.2)	137 (4.8)	174 (6.1)	214 (7.6)
Weight – kg (lb)	115 (254)	107 (236)	121 (267)	132 (291)	121 (267)	161 (355)
Number of Teeth	3	3	3	4	4	5
Part Number	521-9312	521-9313	521-9314	521-9315	521-9316	521-9317



MINI HYDRAULIC EXCAVATOR ATTACHMENTS



DIGGING/GENERAL PURPOSE BUCKETS WITH BASE EDGE PRE-DRILLED FOR BOLT-ON TEETH						CW-05
Machine Class	1 Ton	1 Ton	1 Ton	1 Ton	1 Ton	1 Ton
Width – mm (in)	220 (9)	300 (12)	400 (16)	450 (18)	500 (20)	600 (24)
Capacity – L (ft ³)	17 (0.6)	25 (0.9)	37 (1.3)	43 (1.5)	49 (1.7)	61 (2.2)
Weight – kg (lb)	28 (62)	32 (71)	36 (79)	39 (86)	42 (93)	47 (104)
Part Number	609-2921	521-8514	521-8515	521-8516	521-8517	521-8518



DIGGING/GENERAL PURPOSE BUCKETS WITH BASE EDGE PRE-DRILLED FOR BOLT-ON TEETH						CW-05
Machine Class	2 Ton	2 Ton	2 Ton	2 Ton	2 Ton	2 Ton
Width – mm (in)	300 (12)	400 (16)	450 (18)	500 (20)	600 (24)	700 (28)
Capacity – L (ft ³)	33 (1.2)	48 (1.7)	56 (2)	65 (2.3)	82 (2.9)	100 (3.5)
Weight – kg (lb)	39 (86)	45 (99)	48 (106)	52 (115)	58 (128)	66 (146)
Part Number	521-8519	521-8520	521-8521	521-8522	521-8523	521-8524



DIGGING/GENERAL PURPOSE BUCKETS WITH BASE EDGE PRE-DRILLED FOR BOLT-ON TEETH						CW-05
Machine Class	3 – 4 Ton	3 – 4 Ton	3 – 4 Ton	3 – 4 Ton	3 – 4 Ton	3 – 4 Ton
Width – mm (in)	300 (12)	400 (16)	450 (18)	500 (20)	600 (24)	700 (28)
Capacity – L (ft ³)	41 (1.4)	61 (2.2)	72 (2.5)	82 (2.9)	105 (3.7)	127 (4.5)
Weight – kg (lb)	51 (113)	59 (130)	63 (140)	69 (152)	77 (170)	87 (192)
Part Number	521-8525	521-8526	521-8527	521-8528	521-8529	521-8530

MINI HYDRAULIC EXCAVATOR ATTACHMENTS



DIGGING/GENERAL PURPOSE BUCKETS WITH BASE EDGE PRE-DRILLED FOR BOT								CW-10
Machine Class	5 – 6 Ton	5 – 6 Ton	5 – 6 Ton	5 – 6 Ton	5 – 6 Ton	5 – 6 Ton	5 – 6 Ton	5 – 6 Ton
Interface Type	CW-10	CW-10	CW-10	CW-10	CW-10	CW-10	CW-10	CW-10
Width – mm (in)	300 (12)	400 (16)	450 (18)	500 (20)	600 (24)	700 (28)	787 (31)	787 (31)
Capacity – L (ft ³)	68 (2.4)	101 (3.6)	118 (4.2)	137 (4.8)	174 (6.1)	214 (7.6)	254 (7.0)	254 (7.0)
Weight – kg (lb)	115 (254)	107 (236)	121 (267)	132 (291)	121 (267)	161 (355)	—	—
Part Number	525-4547	525-4548	525-4549	525-4550	525-4551	525-4552	609-2923	609-3424*

*Includes 5 weld-on teeth.



DIGGING/GENERAL PURPOSE BUCKETS WITH BOLT-ON CUTTING EDGE							CW-10
Machine Class	7 – 9 Ton	7 – 9 Ton	7 – 9 Ton	7 – 9 Ton	7 – 9 Ton	7 – 9 Ton	7 – 9 Ton
Interface Type	CW-10	CW-10	CW-10	CW-10	CW-10	CW-10	CW-10
Width – mm (in)	400 (16)	400 (16)	600 (24)	600 (24)	800 (32)	900 (35)	900 (35)
Capacity – L (ft ³)	113 (4)	113 (4)	196 (6.9)	196 (6.9)	286 (10.1)	333 (12)	333 (12)
Weight – kg (lb)	119 (262)	137 (302)	160 (353)	174 (384)	200 (441)	230 (507)	230 (507)
Part Number	542-5455	525-4543	542-5456	525-4544	542-5457	525-4546	525-4546



DIGGING/GENERAL PURPOSE BUCKETS WITH BOLT-ON CUTTING EDGE				CW-10
Machine Class	7 – 9 Ton	7 – 9 Ton	7 – 9 Ton	7 – 9 Ton
Width – mm (in)	600 (24)	800 (32)	800 (32)	800 (32)
Capacity – L (ft ³)	196 (6.9)	286 (10.1)	286 (10.1)	286 (10.1)
Weight – kg (lb)	160 (353)	200 (441)	215 (474)	215 (474)
Part Number	542-5456	542-5457	525-4545*	525-4545*

*Includes 5 welded adapters and Long Tips J225, as well as side cutters.

MINI HYDRAULIC EXCAVATOR ATTACHMENTS

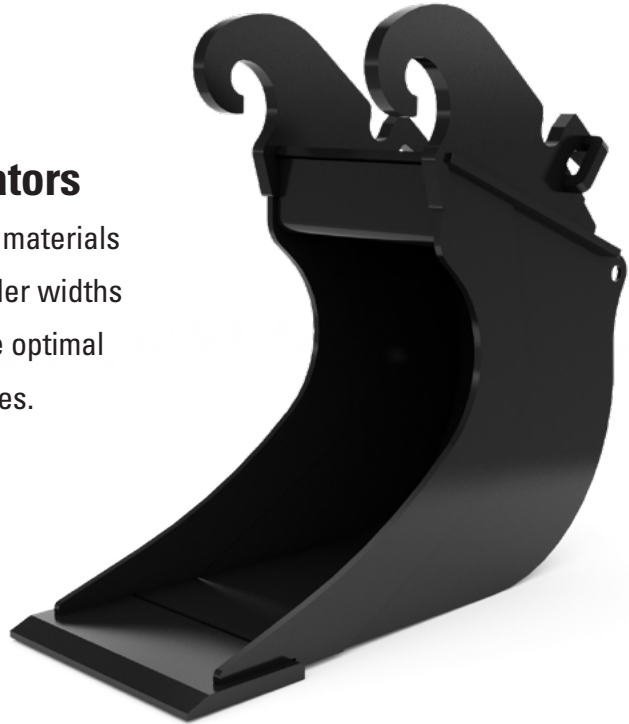


DIGGING/GENERAL PURPOSE BUCKET NETHERLANDS		CW-05	
Machine Class	1 Ton	2 Ton	3 – 4 Ton
Width – mm (in)	400 (16)	500 (20)	500 (20)
Capacity – L (ft ³)	333 (11.8)	93 (3.3)	93 (3.3)
Weight – kg (lb)	230 (507)	67 (148)	67 (148)
Part Number	525-4563	525-4564	525-4565

DIGGING/GENERAL PURPOSE BUCKET NETHERLANDS			CW-10	
Machine Class	5 – 6 Ton	5 – 6 Ton	5 – 6 Ton	5 – 6 Ton
Width – mm (in)	600 (24)	700 (28)	900 (35)	1400 (55)
Capacity – L (ft ³)	333 (12)	168 (5.9)	352 (12.4)	298 (10.5)
Weight – kg (lb)	230 (507)	120 (265)	197 (434)	181 (399)
Part Number	525-4567	525-4568	525-4569	525-4557



Cat Banana Buckets for Mini Excavators are specially made for trenching in cohesive materials like clay for easy unloading. Open side plate and smaller widths are the main characteristics. Banana style buckets are optimal for digging perpendicularly underneath pipes and cables.



TRENCHING/BANANA BUCKET				CW-05
Machine Class	1 Ton	2 Ton	3 – 4 Ton	3 – 4 Ton
Interface Type	CW-05	CW-05	CW-05	CW-05
Width – mm (in)	250 (10)	250 (10)	300 (12)	400 (16)
Capacity – L (ft ³)	23 (0.8)	32 (1.1)	65 (2.3)	86 (3)
Weight – kg (lb)	30 (66)	42 (93)	54 (119)	65 (143)
Part Number	542-5460	542-5461	542-5462	542-5463

TRENCHING/BANANA BUCKET			CW-10
Machine Class	5 – 6 Ton	5 – 6 Ton	7 – 9 Ton
Width – mm (in)	300 (12)	400 (16)	400 (16)
Capacity – L (ft ³)	74 (2.6)	110 (3.9)	155 (5.5)
Weight – kg (lb)	91 (201)	98 (216)	140 (309)
Part Number	542-5464	542-5465	542-5466

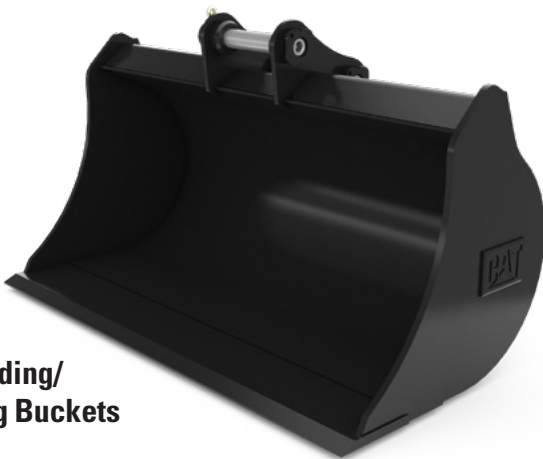
MINI HYDRAULIC EXCAVATOR ATTACHMENTS

Cemetery Buckets



CEMETERY BUCKETS	PIN ON
Machine Class	3 – 4 Ton
Width – mm (in)	813 (32)
Capacity – L (ft ³)	119 (4.2)
Weight – kg (lb)	124 (273)
Part Number	415-6725

**Grading/
Cleaning Buckets**



GRADING/CLEANING BUCKETS	PIN ON		
Machine Class	3 – 4 Ton	3 – 4 Ton	5 – 6 Ton
Width – mm (in)	813 (32)	1067 (42)	1220 (48)
Capacity – L (ft ³)	119 (6.7)	207 (7.3)	430 (15.2)
Weight – kg (lb)	141 (311)	142 (313)	176 (389)
Part Number	423-2737	415-5304	415-5306

**High Capacity
Bucket**



HIGH CAPACITY BUCKETS	1/4 YD PIN LOCK				
Machine Class	7 – 9 Ton	7 – 9 Ton	7 – 9 Ton	7 – 9 Ton	7 – 9 Ton
Width – mm (in)	406 (16)	457 (18)	610 (24)	762 (30)	914 (36)
Capacity – L (ft ³)	160 (5.7)	180 (6.4)	260 (9.2)	360 (12.7)	460 (16.2)
Weight – kg (lb)	153 (337)	162 (357)	194 (428)	222 (489)	254 (560)
Number of Teeth	3	4	5	5	6
Part Number	247-1954	247-1955	247-1956	247-1957	247-1958

MINI HYDRAULIC EXCAVATOR ATTACHMENTS



Heavy Duty Buckets

Heavy Duty Buckets are designed for maximum performance and value over a broad range of abrasive applications such as mixed dirt, clay and rock.

HEAVY DUTY BUCKETS				PIN ON
Machine Class	3 – 4 Ton	3 – 4 Ton	3 – 4 Ton	3 – 4 Ton
Width – mm (in)	305 (12)	406 (16)	457 (18)	508 (20)
Capacity – L (ft³)	48 (1.7)	71 (2.5)	82 (2.9)	93 (3.3)
Weight – kg (lb)	65 (143)	74 (163)	82 (181)	87 (192)
Number of Teeth	3	3	4	4
Part Number	464-9900	464-9901	464-9902	464-9903

HEAVY DUTY BUCKETS					PIN ON		
Machine Class	3 – 4 Ton	3 – 4 Ton	3 – 4 Ton	3 – 4 Ton	5 – 6 Ton	5 – 6 Ton	5 – 6 Ton
Width – mm (in)	610 (24)	610 (24)	762 (30)	914 (36)	305 (12)	406 (16)	457 (18)
Capacity – L (ft³)	119 (4.2)	120 (4.2)	159 (5.6)	200 (7.1)	60 (2.1)	77 (2.7)	88 (3.1)
Weight – kg (lb)	98 (216)	98 (216)	117 (258)	133 (293)	71 (157)	79 (174)	88 (194)
Number of Teeth	4	5	5	5	3	3	4
Part Number	464-9904	535-8403	464-9905	464-9906	464-9907	464-9908	464-9909

HEAVY DUTY BUCKETS					PIN ON	
Machine Class	5 – 6 Ton	5 – 6 Ton	5 – 6 Ton	5 – 6 Ton	5 – 6 Ton	5 – 6 Ton
Width – mm (in)	508 (20)	619 (24)	610 (24)	762 (30)	914 (36)	914 (36)
Capacity – L (ft³)	102 (3.6)	130 (4.6)	130 (4.6)	173 (6.1)	221 (7.8)	220 (7.8)
Weight – kg (lb)	94 (207)	106 (234)	106 (234)	127 (280)	146 (322)	145 (320)
Number of Teeth	4	4	5	5	5	6
Part Number	464-9910	464-9911	535-8405	464-9912	464-9913	537-7604

MINI HYDRAULIC EXCAVATOR ATTACHMENTS

Heavy Duty Buckets
Pin On



HEAVY DUTY BUCKETS					PIN ON
Machine Class	10 Ton	10 Ton	10 Ton	10 Ton	10 Ton
Width – mm (in)	457 (18)	610 (24)	762 (30)	914 (36)	1067 (42)
Capacity – L (ft³)	180 (6.4)	270 (9.5)	350 (12.4)	450 (15.9)	540 (19.1)
Weight – kg (lb)	203 (448)	225 (496)	257 (567)	301 (664)	338 (745)
Number of Teeth	3	4	5	5	6
Part Number	547-7030	547-7031	547-7032	547-7033	547-7034

HEAVY DUTY BUCKETS				1/4 YD PIN LOCK		
Machine Class	7 – 9 Ton	7 – 9 Ton	7 – 9 Ton	7 – 9 Ton	7 – 9 Ton	7 – 9 Ton
Width – mm (in)	300 (12)	406 (16)	457 (18)	610 (24)	762 (30)	914 (36)
Capacity – L (ft³)	96 (3.4)	120 (4.2)	139 (4.9)	207 (7.3)	280 (9.9)	340 (12)
Weight – kg (lb)	113 (249)	135 (298)	138 (304)	168 (370)	201 (443)	231 (509)
Number of Teeth	3	3	4	5	5	6
Part Number	247-1947	247-1948	247-1949	247-1950	247-1951	247-1952

Heavy Duty Buckets
Pin Lock



HEAVY DUTY BUCKETS				1/2 YD PIN LOCK	
Machine Class	10 Ton	10 Ton	10 Ton	10 Ton	10 Ton
Width – mm (in)	463 (18)	616 (24)	921 (36)	1226 (48)	
Capacity – L (ft³)	200 (7.1)	300 (10.6)	500 (17.7)	800 (28.3)	
Weight – kg (lb)	250 (551)	301 (664)	390 (860)	478 (1054)	
Number of Teeth	3	4	6	8	
Part Number	527-7302	528-8034	528-8784	528-8786	



Heavy Duty Rock Buckets
Pin On

HEAVY DUTY ROCK BUCKETS							PIN ON
Machine Class	7 – 9 Ton	7 – 9 Ton	7 – 9 Ton	7 – 9 Ton	7 – 9 Ton	7 – 9 Ton	7 – 9 Ton
Width – mm (in)	330 (13)	457 (18)	610 (24)	762 (30)	914 (36)	610 (24)	762 (30)
Capacity – L (ft³)	99 (3.5)	150 (5.3)	230 (8.1)	309 (10.9)	388 (13.7)	230 (8.1)	309 (10.9)
Weight – kg (lb)	136 (300)	151 (333)	178 (393)	207 (456)	230 (507)	194 (428)	223 (492)
Number of Teeth	3	4	4	5	5	4	5
Part Number	305-6813	295-5951	295-5952	295-5953	295-5954	295-5970	295-5971

MINI HYDRAULIC EXCAVATOR ATTACHMENTS



HEAVY DUTY CAPACITY BUCKETS				PIN ON
Machine Class	5 – 6 Ton	5 – 6 Ton	5 – 6 Ton	5 – 6 Ton
Width – mm (in)	305 (12)	406 (16)	457 (18)	508 (20)
Capacity – L (ft³)	82 (2.9)	105 (3.7)	125 (4.4)	144 (5.1)
Weight – kg (lb)	84 (185)	93 (205)	103 (227)	109 (240)
Number of Teeth	3	3	4	4
Part Number	464-9914	464-9915	464-9916	464-9917














**Heavy Duty Capacity Buckets
Pin On**

HEAVY DUTY CAPACITY BUCKETS					PIN ON
Machine Class	5 – 6 Ton	5 – 6 Ton	5 – 6 Ton	5 – 6 Ton	5 – 6 Ton
Width – mm (in)	619 (24)	610 (24)	762 (30)	914 (36)	914 (36)
Capacity – L (ft³)	181 (6.4)	180 (6.4)	241 (8.5)	300 (10.6)	300 (10.6)
Weight – kg (lb)	123 (271)	123 (271)	146 (322)	167 (368)	157 (367)
Number of Teeth	4	5	5	5	6
Part Number	464-9918	535-8407	464-9919	464-9920	537-7606



BUCKET TEETH		
Description	J200 (3 – 6 ton)	J225 (7 – 9 Ton) and (10 Ton)
Long	1U-3202	6Y-3222
Retainer	8E-6209	8E-6259
Light Duty Long	449-2154	N/A
Short	N/A	6Y-6221
Wide	109-9200	186-3010
Penetration	1U-3209	6Y-8229
Sharp – Corner	9W-8208	6Y-7228
Sharp – Center	9W-8209	6Y-7229
Sharp – Twin	135-8208	135-8228
Heavy Duty Long	N/A	8E-4222
Heavy Duty Abrasion	N/A	6Y-6223
Abrasion	4T-2203	N/A
Heavy Duty Pin	8E-6208	132-4762
Heavy Duty Retainer – Assembly	8E-6209	149-5733

BUCKET TEETH		
		Description
	Long	<ul style="list-style-type: none"> • Best choice for most jobs • Good strength • Good penetration • Good wear material
	Light Duty Long	<ul style="list-style-type: none"> • Self-sharpening design and symmetrical shape • For use in low impact with low to medium abrasiveness
	Short	<ul style="list-style-type: none"> • More strength • Less wear material
	Wide	<ul style="list-style-type: none"> • Low penetration • Low impact applications • For use on smooth ground surfaces
	Penetration	<ul style="list-style-type: none"> • Very good penetration • Moderate impact for lower abrasive conditions • Less wear material
	Sharp Corner	<ul style="list-style-type: none"> • Best penetration • Easy wear material • DH-3 steel for greater wear
	Sharp – Center	<ul style="list-style-type: none"> • Excellent penetration • For use on cohesive materials • Less wear material
	Sharp – Twin	<ul style="list-style-type: none"> • Very good penetration • For use on fracturable materials • Install in corner positions with spike centers
	Heavy Duty Long	<ul style="list-style-type: none"> • More wear material • For use on larger machines in general loading and excavation work
	Heavy Duty Abrasion	<ul style="list-style-type: none"> • Use on larger machines when working in sand, gravel and short rock • Maximum wear material • Least cost per hour • Less penetration
	Abrasion	<ul style="list-style-type: none"> • More wear material • Less penetration • For use in general more abrasive loading

MINI HYDRAULIC EXCAVATOR ATTACHMENTS



Cat Tilt Rotate Systems (TRS) for excavators provide 360-degree rotation and 40-degree tilting action side-to-side, allowing the machine to reach more areas from a single position. The tiltrotator enables the operator to maneuver around posts, rocks and other obstacles, as well as to more easily reach along ditch edges.

GRAPPLE MODULE

Tilt Rotate System	TRS4/TRS6
Part Number	619-1075*

**For use with S40 on the attachments side.*



Tiltrotator TRS6

MINI HYDRAULIC EXCAVATOR ATTACHMENTS

TILT ROTATE SYSTEMS – NEXT GENERATION MHE ONLY					
MODEL	TRS4	TRS4	TRS4	TRS4	TRS4
Machine Class	2 Ton	2 Ton	3-4 Ton	3-4 Ton	3-4 Ton
Top Interface	Pin On	Pin On	S40	Pin On	Pin On
Bottom Interface	S40	Pin Grabber	S40	S40	Pin Grabber
Grapple	Optional	No	Optional	Optional	No
Overall Height – mm (in)	701 (28)	744 (29)	701 (28)	784 (31)	700 (28)
Overall Length – mm (in)	520 (20)	519 (20)	517 (20)	519 (20)	486 (19)
Overall Width – mm (in)	449 (17.7)	448 (17.6)	442 (17.4)	448 (17.6)	465 (18.3)
Weight – kg (lb)	132 (291)	132 (291)	131 (289)	135 (298)	136 (300)
Part Number	656-1443	656-1444	656-1440	656-1441	656-1442
Required Hydraulics	First Auxiliary	First Auxiliary	First Auxiliary	First Auxiliary	First Auxiliary
Lines to Auxiliary QD	608-4854	608-4854	608-4854	608-4854	608-4854
Kit – TRS Joystick	635-8598	635-8598	635-8598	635-8598	635-8598
Kit – Harness	608-4851	608-4851	608-4851	608-4851	608-4851

TILT ROTATE SYSTEMS – NEXT GENERATION MHE ONLY			
MODEL	TRS6	TRS6	TRS6
Machine Class	5-6 Ton	5-6 Ton	5-6 Ton
Top Interface	S40	Pin On	Pin On
Bottom Interface	S40	S40	Pin Grabber
Grapple	Optional	Optional	No
Overall Height – mm (in)	818 (32)	822 (32)	907 (36)
Overall Length – mm (in)	525 (21)	608 (24)	608 (24)
Overall Width – mm (in)	492 (19.4)	485 (19)	485 (19)
Weight – kg (lb)	165 (364)	179 (395)	186 (410)
Part Number	656-1465	656-1466	656-1467
Required Hydraulics	First Auxiliary	First Auxiliary	First Auxiliary
Lines to Auxiliary QD	585-0454	585-0454	585-0454
Kit – TRS Joystick	635-8598	635-8598	635-8598
Kit – Harness	585-0431	585-0431	585-0431

MINI HYDRAULIC EXCAVATOR ATTACHMENTS



**Tiltrotator
TRS8**



TILT ROTATE SYSTEMS – NEXT GENERATION MHE ONLY

MODEL	TRS8	TRS8	TRS8	TRS8	TRS8
Machine Class	7-9 Ton	7-9 Ton	7-9 Ton	7-10 Ton	7-10 Ton
Top Interface	Pin On	Pin On	Pin On	S45	S50
Bottom Interface	S45	S50	Pin Grabber	S45	S50
Grapple	Optional	Optional	No	Optional	Optional
Overall Height – mm (in)	953 (38)	953 (38)	1002 (39)	949 (37)	953 (38)
Overall Length – mm (in)	660 (26)	660 (26)	660 (26)	612 (24.1)	608 (23.9)
Overall Width – mm (in)	705 (27.8)	705 (27.8)	705 (27.8)	705 (27.8)	705 (27.8)
Weight – kg (lb)	328 (723)	306 (775)	315 (695)	313 (690)	306 (675)
Part Number	656-1506	656-1509	656-1511	656-1505	656-1508
Required Hydraulics	First Auxiliary	First Auxiliary	First Auxiliary	First Auxiliary	First Auxiliary
Lines to Auxiliary QD	577-1587	577-1587	577-1587	577-1587	577-1587
Kit – TRS Joystick	635-8598	635-8598	635-8598	635-8598	635-8598
Kit – Harness	577-1565	577-1565	577-1565	577-1565	577-1565

MINI HYDRAULIC EXCAVATOR ATTACHMENTS



GRAPPLE MODULE

Tilt Rotate System	TRS8
Part Number	619-2067*

*For use with S45 or S50 on the attachments side.

KIT – CASE DRAIN

Machine Class	7 – 10 Ton
Part Number	609-6155

KIT – TRS4/TRS8 TILTROTATOR POSITIONING SYSTEM (RPS)

Machine Class	7 – 9 Ton
Part Number	607-2779

KIT – FIXED BOOM TRS HARNESS

Machine Class	7 – 9 Ton
Part Number	642-9417

KIT – TRS SWING HARNESS

Part Number	615-7493
-------------	----------

TILT ROTATE SYSTEMS – NEXT GENERATION MHE ONLY

MODEL	TRS8	TRS8	TRS8
Machine Class	10 Ton	10 Ton	10 Ton
Top Interface	Pin On	Pin On	Pin On
Bottom Interface	S45	S50	Pin Grabber
Grapple	Optional	Optional	No
Overall Height – mm (in)	953 (38)	953 (38)	1042 (41)
Overall Length – mm (in)	660 (26)	660 (26)	660 (26)
Overall Width – mm (in)	705 (27.8)	705 (27.8)	705 (27.8)
Weight – kg (lb)	328 (723)	316 (697)	326 (719)
Part Number	656-1507	656-1510	656-1512
Required Hydraulics	First Auxiliary	First Auxiliary	First Auxiliary
Lines to Auxiliary QD	577-1587	577-1587	577-1587
Kit – TRS Joystick	635-8598	635-8598	635-8598
Kit – Harness	577-1565	577-1565	577-1565

MINI HYDRAULIC EXCAVATOR ATTACHMENTS

The **Nordic Style bucket portfolio** has been developed to create optimal matches with a variety of MHE machine platforms. Load a variety of materials with a combination of a quick coupler, TRS and matching buckets.

NORDIC STYLE DIGGING BUCKETS

S40

Machine Class	2 Ton	2 Ton	3 Ton	3 Ton	5 – 6 Ton	5 – 6 Ton	6 Ton	6 Ton
Width – mm (in)	500 (20)	520 (21)	600 (24)	630 (25)	620 (24)	680 (27)	720 (28)	800 (32)
Capacity – L (ft ³)	140 (4.9)	145 (5.1)	160 (5.7)	165 (5.8)	240 (8.5)	240 (8.5)	280 (9.9)	280 (9.9)
Weight – kg (lb)	99 (218)	100 (221)	107 (236)	108 (238)	161 (355)	189 (417)	184 (406)	209 (461)
Number of Teeth	—	4	—	4	—	4	—	4
Part Number	586-5960	586-5953	586-5961	586-5954	586-5962	586-5955	601-1133	601-1134

NORDIC STYLE DIGGING BUCKETS

S45

Machine Class	7 – 9 Ton	7 – 9 Ton	10 Ton	10 Ton
Width – mm (in)	830 (33)	870 (34)	920 (36)	950 (37)
Capacity – L (ft ³)	400 (14.1)	400 (14.1)	500 (17.7)	500 (17.7)
Weight – kg (lb)	288 (635)	304 (670)	375 (827)	392 (864)
Number of Teeth	—	4	—	4
Part Number	586-5964	586-5957	601-1135	601-1136

**Nordic Style
Digging**



NORDIC STYLE DIGGING BUCKETS

S50

Machine Class	7 – 9 Ton	7 – 9 Ton	10 Ton	10 Ton
Width – mm (in)	830 (33)	870 (34)	920 (36)	950 (37)
Capacity – L (ft ³)	400 (14.1)	400 (14.1)	500 (17.7)	500 (17.7)
Weight – kg (lb)	292 (644)	295 (650)	382 (842)	399 (880)
Part Number	586-5965	586-5958	586-5966	586-5959

**Nordic Style
Grading
Pin On**



NORDIC STYLE GRADING BUCKETS

PIN ON

Machine Class	5 – 6 Ton	7 – 9 Ton	10 Ton
Width – mm (in)	1200 (47)	1300 (51)	1500 (59)
Capacity – L (ft ³)	210 (7.4)	400 (14.1)	17.7 (500)
Weight – kg (lb)	174 (384)	289 (637)	917 (416)
Part Number	601-1140	601-1141	601-1142

MINI HYDRAULIC EXCAVATOR ATTACHMENTS



**Nordic Style
Grading**



NORDIC STYLE GRADING BUCKETS S40

Machine Class	2 Ton	3 Ton	5 – 6 Ton	6 Ton
Width – mm (in)	1000 (39)	1100 (43)	1200 (47)	1300 (51)
Capacity – L (ft³)	110 (3.9)	150 (5.3)	210 (7.4)	250 (8.8)
Weight – kg (lb)	94 (207)	115 (254)	157 (346)	172 (379)
Part Number	586-5946	586-5947	586-5948	601-1137

NORDIC STYLE GRADING BUCKETS S45

Machine Class	7 – 9 Ton	10 Ton
Width – mm (in)	1300 (51)	1500 (59)
Capacity – L (ft³)	400 (14)	500 (17.7)
Weight – kg (lb)	264 (582)	376 (829)
Part Number	586-5950	601-1138

NORDIC STYLE GRADING BUCKETS S50

Machine Class	7 – 9 Ton	10 Ton
Width – mm (in)	1300 (51)	1500 (59)
Capacity – L (ft³)	400 (14)	500 (17.7)
Weight – kg (lb)	270 (595)	382 (842)
Part Number	586-5951	586-5952

NORDIC STYLE TRENCHING BUCKETS S40

Machine Class	2 Ton	3 Ton	5 – 6 Ton
Width – mm (in)	300 (12)	320 (13)	320 (13)
Capacity – L (ft³)	55 (1.9)	80 (2.8)	120 (4.2)
Weight – kg (lb)	55 (121)	77 (170)	97 (214)
Part Number	586-5941	586-5942	586-5943

NORDIC STYLE TRENCHING BUCKETS S45

Machine Class	7 – 9 Ton
Width – mm (in)	400 (16)
Capacity – L (ft³)	220 (7.8)
Weight – kg (lb)	168 (370)
Part Number	586-5944



**Nordic Style
Trenching**

NORDIC STYLE TRENCHING BUCKETS S50

Machine Class	7 – 9 Ton	10 Ton
Width – mm (in)	400 (16)	1300 (51)
Capacity – L (ft³)	220 (7.8)	400 (14.1)
Weight – kg (lb)	174 (384)	270 (595)
Part Number	586-5945	586-5951

MINI HYDRAULIC EXCAVATOR ATTACHMENTS

Multi-Purpose Grapples are designed to allow maximum maneuverability with Cat Tiltrotators. The integrated bracket has a minimal offset to optimize the performance of the grapple functionality. The Multi-Purpose Grapple works best in material handling applications where irregular surface materials are used, such as concrete pipe, curbs, trees, brush and other hardscape used in landscaping.



G206 Grapple



G208 Grapple

GRAPPLE		
MODEL	G206*	G208*
Machine Class	5 – 6 Ton	7 – 10 Ton
Part Number	576-1230	576-1220

*For use with a TRS only. Requires lines and bracket.

HYDRAULIC LINES		
MODEL	TRS6	TRS8
Machine Class	5 – 6 Ton	7 – 10 Ton
Lines	634-5629	614-7880

BRACKET						
Machine Class	5 – 6 Ton	5 – 6 Ton	7 – 9 Ton	7 – 9 Ton	7 – 9 Ton	10 Ton
Model	G206/TRS6	G206/TRS6	G208/TRS8	G208/TRS8	G208/TRS8	G208/TRS8
Interface Type	Pin Grabber	S40	S45	S50	Pin Grabber	Pin Grabber
Part Number	618-4920	618-4910	619-0770	613-7300	619-0750	619-0760

MINI HYDRAULIC EXCAVATOR ATTACHMENTS



MINI HYDRAULIC EXCAVATOR ATTACHMENTS



Auger Drives

Cat Augers offer different speed and torque options

for a variety of soils. Speed and torque are engineered to extract soil efficiently and to prevent stalling in dense ground. Select from a range of auger bits.

AUGER DRIVE ASSEMBLIES (INCLUDES BRACKET)

MODEL	A11	A11	A23
Machine Class	1 Ton	2 Ton	2 Ton
Overall Height – mm (in)	900 (35)	900 (35)	947 (37)
Weight – kg (lb)	79 (174)	81 (179)	117 (258)
Drive Shaft Torque at Max Pressure – N m (lb ft)	1105 (815)	1105 (815)	2304 (1699)
Required Hydraulics	First Aux	First Aux	First Aux
Drive Method	Direct Drive	Direct Drive	Direct Drive
Part Number	218-3206	218-3207	218-3197

AUGER DRIVE ASSEMBLIES (INCLUDES BRACKET)

MODEL	A23	A41	A41	A68	A68
Machine Class	3 – 4 Ton	3 – 4 Ton	5 – 6 Ton	5 – 6 Ton	7 – 9 Ton
Overall Height – mm (in)	(958) 38	(875) 34	(875) 34	(916) 36	(916) 36
Weight – kg (lb)	(120) 265	(92) 203	(94) 207	(106) 234	(147) 324
Drive Shaft Torque at Max Pressure – N m (lb ft)	(2304) 1699	(4120) 3039	(4120) 3039	(6826) 5035	(6826) 5035
Required Hydraulics	First Aux	First Aux	First Aux	First Aux	First Aux
Drive Method	Direct Drive	Single Planetary	Single Planetary	Double Planetary	Double Planetary
Part Number	218-3198	220-7137	275-1000	275-1001	313-1460

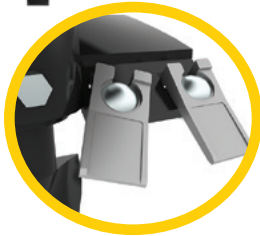
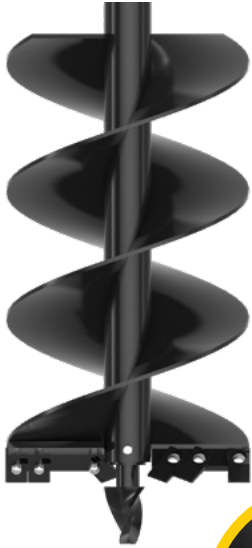
MINI HYDRAULIC EXCAVATOR ATTACHMENTS

AUGER DRIVES AND BRACKETS					
MODEL	A11	A11	A23	A23	A41
Machine Class	1 Ton	2 Ton	2 Ton	3 – 4 Ton	3 – 4 Ton
Drive	225-3893	225-3893	225-3895	225-3895	230-5578
Bracket	213-9238	213-8570	213-8570	213-8568	213-8568

AUGER DRIVES AND BRACKETS			
MODEL	A41	A68	A68
Machine Class	5 – 6 Tons	5 – 6 Tons	7 – 9 Tons
Drive	230-5578	225-8809	225-8809
Bracket	275-0999	275-0999	N/A



MINI HYDRAULIC EXCAVATOR ATTACHMENTS



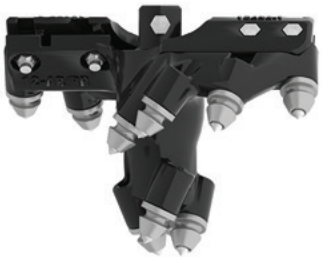
Auger Bit – Standard Duty

AUGER BITS – STANDARD DUTY

Diameter – mm (in)	102 (4)	152 (6)	229 (9)	305 (12)	381 (15)
Overall Length – mm (in)	1219 (48)	1238 (49)	1238 (49)	1278 (50)	1289 (51)
Weight – kg (lb)	18 (40)	23 (51)	34 (75)	46 (101)	50 (111)
Number of Teeth	2	2	4	4	5
Part Number	366-7751	153-4083	153-4084	153-4085	366-7752

AUGER BITS – STANDARD DUTY (CONT.)

Diameter – mm (in)	457 (18)	610 (24)	762 (30)	914 (36)
Overall Length – mm (in)	1278 (50)	1288 (51)	1278 (50)	1278 (50)
Weight – kg (lb)	65 (143)	92 (203)	128 (282)	173 (381)
Number of Teeth	6	8	10	12
Part Number	153-4086	153-4089	217-3194	153-4091



**Auger – Bolt-On
Rock Head**

AUGER BITS – BOLT-ON ROCK HEAD

Diameter – mm (in)	190 (7.5)	266 (10.5)	342 (13.5)	419 (16.5)	495 (19.5)	647 (25.5)
Overall Length – mm (in)	238 (9)	250 (10)	250 (10)	263 (10)	276 (11)	301 (12)
Weight – kg (lb)	11 (23)	15 (33)	19 (41)	21 (47)	25 (55)	36 (79)
Number of Teeth	8	10	12	14	16	20
Part Number	372-0230	372-0231	372-0232	372-0233	372-0234	372-0235

- Requires standard flight
- Transforms a standard bit into a rock drill bit
- For severe ground conditions including rock and various types of concrete
- Bolt-on design for easy removal when returning to normal conditions



Auger Industrial

AUGER BITS – INDUSTRIAL

Diameter – mm (in)	152 (6)	229 (9)	305 (12)	406 (16)	457 (18)
Overall Length – mm (in)	1224 (48)	1219 (48)	1219 (48)	1221 (48)	1224 (48)
Weight – kg (lb)	26 (57)	33 (73)	41 (90)	52 (115)	49 (108)
Number of Teeth	2	4	4	6	6
Part Number	372-0260	372-0261	372-0262	372-0263	372-0264

AUGER BITS – INDUSTRIAL (CONT.)

Diameter – mm (in)	610 (24)	762 (30)	914 (36)	1067 (42)	1219 (48)
Overall Length – mm (in)	1219 (48)	1219 (48)	1219 (48)	1219 (48)	1220 (48)
Weight – kg (lb)	68 (150)	82 (181)	101 (223)	132 (291)	156 (344)
Number of Teeth	8	10	12	16	18
Part Number	372-0265	372-0266	372-0267	372-0268	372-0269



Auger – Industrial Rock

AUGER BITS – INDUSTRIAL ROCK

Diameter – mm (in)	152 (6)	229 (9)	305 (12)	406 (16)	457 (18)
Overall Length – mm (in)	1222 (48)	1222 (48)	1222 (48)	1221 (48)	1221 (48)
Weight – kg (lb)	36 (79)	49 (108)	61 (135)	76 (168)	87 (192)
Number of Teeth	8	10	12	15	16
Part Number	372-0270	372-0271	372-0272	372-0273	372-0274

AUGER BITS – INDUSTRIAL ROCK (CONT.)

Diameter – mm (in)	508 (20)	610 (24)	762 (30)	914 (36)
Overall Length – mm (in)	1221 (48)	1222 (48)	1222 (48)	1222 (48)
Weight – kg (lb)	99 (218)	128 (282)	141 (311)	186 (410)
Number of Teeth	17	20	24	26
Part Number	372-0275	372-0276	372-0277	372-0278

- Excellent tooth retention while digging
- Allows for easy removal and installation

MINI HYDRAULIC EXCAVATOR ATTACHMENTS



Auger Bits – Tree

Tapered tip for drilling holes with a large mouth and narrow base to properly fit a root ball or holes with a small diameter to fill with mulch or fertilizer.

AUGER BITS – TREE

Upper Diameter – mm (in)	610 (24)	914 (36)
Lower Diameter – mm (in)	305 (12)	457 (18)
Overall Length – mm (in)	1289 (51)	1288 (51)
Weight – kg (lb)	74 (163)	140 (309)
Number of Teeth	9	13
Part Number	153-4092	153-4095



Auger – tree

ADAPTERS AND EXTENSIONS

Adapter, Hex – 50 mm (2 in) to Round – 65 mm (2 9/16 in)	156-6329
Adapter, Round 65 mm (2 9/16 in) to Hex 50 mm (2 in)	217-3191
Extension, Telescoping 914 mm (3 ft)	372-0256
Extension, Telescoping 1829 mm (6 ft)	372-0257
Extension, Auger 305 mm (12 in)	156-6328
Extension, Auger 610 mm (24 in)	217-3192
Retention Pin Kit	372-0258



RETENTION PIN KIT
372-0258



Extension – Telescoping
372-0256

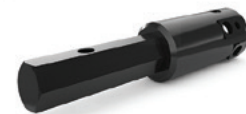
914 mm (3 ft)
3 adjustments spaced 305 mm (1 ft) apart

Extension 156-6328
305 mm (12 in)



Extension 217-3192
610 mm (24 in)

Adapter 217-3191
ROUND TO HEX



Adapter 156-6329
HEX TO ROUND



Extension – Telescoping
372-0257

1829 mm (6 ft)
6 adjustments spaced 305 mm (1 ft) apart

Cat compaction wheels provide a low-cost option

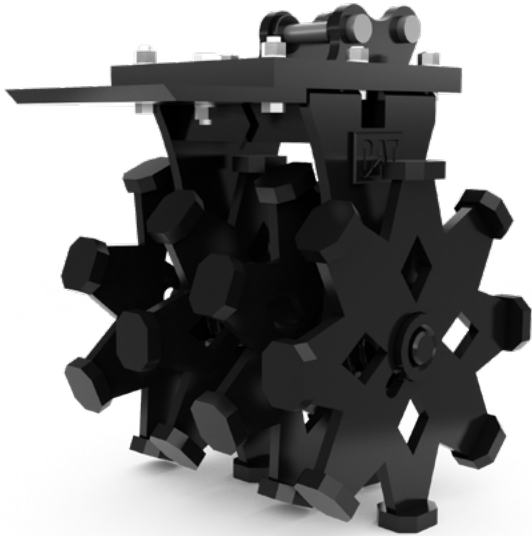
for trench compaction. The wheels feature tapered roller bearings and tampered foot design for smooth operation. Six to ten passes are usually adequate to achieve compaction in normal soil conditions, dependent on the required compaction levels.



COMPACTION WHEELS				PIN ON		
Machine Class	1 Ton	1 Ton	1 Ton	2 Ton	2 Ton	2 Ton
Overall Width – mm (in)	292 (12)	399 (16)	553 (22)	313 (12)	399 (16)	553 (22)
Compaction Width – mm (in)	271 (11)	399 (16)	553 (22)	271 (11)	399 (16)	553 (22)
Overall Height – mm (in)	752 (30)	792 (31)	792 (31)	787 (31)	827 (33)	827 (33)
Overall Length – mm (in)	726 (29)	693 (27)	693 (27)	725 (29)	693 (27)	693 (27)
Weight – kg (lb)	155 (342)	216 (476)	258 (569)	161 (355)	222 (489)	264 (582)
Number of Wheels	2	3	4	2	3	4
Number of Pads	16	24	32	16	24	32
Part Number	517-6970	517-6971	517-6972	517-6973	517-6974	517-6975

Compaction Wheels

Pin on compaction wheels can be used in combination with the applicable pin grabber quick coupler.



MINI HYDRAULIC EXCAVATOR ATTACHMENTS

COMPACTION WHEELS				PIN ON		
Machine Class	3 – 4 Ton	3 – 4 Ton	3 – 4 Ton	5 – 6 Ton	5 – 6 Ton	5 – 6 Ton
Overall Width – mm (in)	309 (12)	399 (16)	553 (22)	343 (14)	399 (16)	553 (22)
Compaction Width – mm (in)	271 (11)	399 (16)	553 (22)	271 (11)	399 (16)	553 (22)
Overall Height – mm (in)	806 (32)	846 (33)	846 (33)	829 (33)	868 (34)	868 (34)
Overall Length – mm (in)	726 (29)	693 (27)	693 (27)	726 (29)	693 (27)	693 (27)
Weight – kg (lb)	162 (357)	224 (494)	266 (586)	170 (375)	230 (507)	273 (602)
Number of Wheels	2	3	4	2	3	4
Number of Pads	16	24	32	16	24	32
Part Number	517-6976	517-6977	517-6978	517-6979	517-6980	517-6981



COMPACTION WHEELS				PIN ON
Machine Class	7 – 9 Ton	7 – 9 Ton	7 – 9 Ton	7 – 9 Ton
Overall Width – mm (in)	338 (13)	449 (18)	556 (22)	884 (35)
Compaction Width – mm (in)	306 (12)	449 (18)	556 (22)	884 (35)
Overall Height – mm (in)	1152 (45)	1165 (46)	1165 (46)	1164 (46)
Overall Length – mm (in)	998 (39)	997 (39)	997 (39)	1073 (42)
Weight – kg (lb)	415 (915)	557 (1228)	575 (1268)	882 (1945)
Number of Wheels	2	3	3	5
Number of Pads	18	27	27	45
Part Number	517-6988	517-6989	517-6990	517-6991

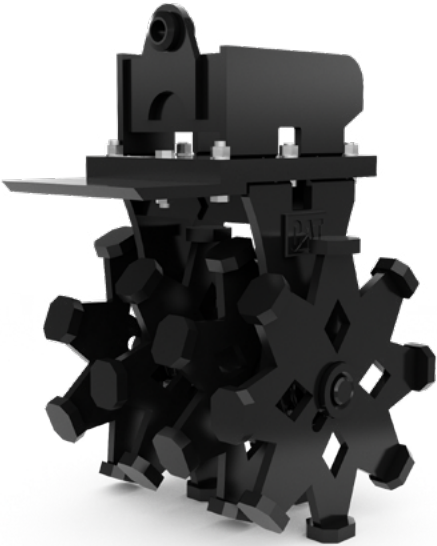


COMPACTION WHEELS				PIN ON
Machine Class	10 Ton	10 Ton	10 Ton	10 Ton
Overall Width – in (mm)	323 (12.7)	449 (17.7)	556 (22)	884 (35)
Compaction Width – in (mm)	306 (12)	449 (17.7)	556 (22)	884 (35)
Overall Height – in (mm)	1155 (46)	1168 (46)	1168 (46)	1168 (46)
Overall Length – in (mm)	1014 (40)	1014 (40)	1014 (40)	1091 (43)
Weight – lb (kg)	435 (959)	574 (1266)	593 (1307)	899 (1982)
Number of Wheels	2	3	3	5
Number of Pads	18	27	27	45
Part Number	517-6998	517-6999	517-7000	517-7001



Pin Lock Compaction Wheels

*Pin lock compaction wheels
can be used with the
applicable pin lock coupler.*



MINI HYDRAULIC EXCAVATOR ATTACHMENTS

COMPACTION WHEELS				1/8 YD PIN LOCK		
Machine Class	1 – 6 Ton					
Compaction Width – in (mm)	292 (12)	399 (16)	553 (22)	292 (12)	399 (16)	553 (22)
Overall Height – in (mm)	271 (11)	399 (16)	553 (22)	271 (11)	399 (16)	553 (22)
Overall Length – in (mm)	921 (36)	961 (38)	961 (38)	901 (36)	941 (37)	941 (37)
Weight – lb (kg)	726 (29)	693 (27)	693 (27)	726 (29)	693 (27)	693 (27)
Weight – lb (kg)	179 (395)	240 (529)	282 (622)	177 (390)	237 (523)	280 (617)
Number of Wheels	2	3	4	2	3	4
Number of Pads	16	24	32	16	24	32
Interface Type*	Wain Roy	Wain Roy	Wain Roy	TAG	TAG	TAG
Part Number	517-6982	517-6983	517-6984	517-6985	517-6986	517-6987

COMPACTION WHEELS			1/4 YD PIN LOCK
Machine Class	7 – 9 Ton		
Compaction Width – in (mm)	312 (12)	439 (17)	559 (22)
Overall Height – in (mm)	286 (11)	439 (17)	559 (22)
Overall Length – in (mm)	1207 (48)	1181 (47)	1179 (46)
Weight – lb (kg)	995 (39)	991 (39)	991 (39)
Weight – lb (kg)	379 (836)	487 (1074)	518 (1142)
Number of Wheels	2	3	3
Number of Pads	18	27	27
Interface Type*	Wain Roy	Wain Roy	Wain Roy
Part Number	517-6995	517-6996	517-6997

COMPACTION WHEELS				1/2 YD PIN LOCK
Machine Class	1 Ton			
Compaction Width – in (mm)	356 (14)	449 (18)	556 (22)	884 (35)
Overall Height – in (mm)	306 (12)	449 (18)	556 (22)	884 (35)
Overall Length – in (mm)	1276 (50)	1284 (51)	1284 (51)	1284 (51)
Weight – lb (kg)	998 (39)	997 (39)	997 (39)	1073 (42)
Weight – lb (kg)	429 (946)	563 (1241)	581 (1281)	894 (1971)
Number of Wheels	2	3	3	5
Number of Pads	18	27	27	45
Interface Type*	Wain Roy	Wain Roy	Wain Roy	Wain Roy
Part Number	517-7002	517-7003	517-7004	517-7005

*Wain Roy and TAG are industry versions of the interface.

Cat Vibratory Plate Compactors are for compacting soil, sand or gravel prior to pouring concrete or laying asphalt surfaces. They are also ideal for asphalt patch work. Their capabilities and lower investment and maintenance costs make them popular with pavers, general contractors as well as utility contractors in residential, commercial or industrial applications.



Vibratory Plate Compactor

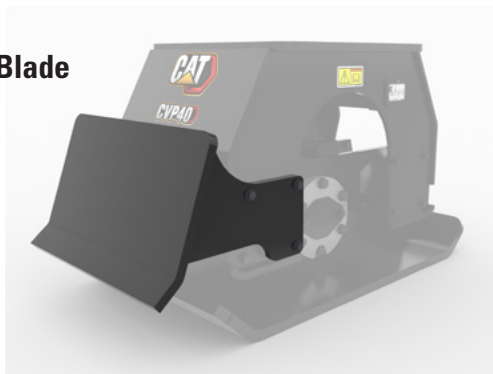
VIBRATORY PLATE COMPACTOR

MODEL	CVP16	CVP28	CVP40	CVP55
Machine Class	2 – 4 Ton	3 – 6 Ton	6 – 10 Ton	7 – 10 Ton
Base Plate Width – mm (in)	305 (12)	450 (18)	590 (23)	660 (26)
Compaction Area – m ² (ft ²)	0.2 (2.0)	0.3 (3.4)	0.4 (4.7)	0.5 (5.7)
Base Plate Length – mm (in)	305 (12)	710 (28)	740 (39)	810 (32)
Required Hydraulics	First Auxiliary	First Auxiliary	First Auxiliary	First Auxiliary
Weight – lb (kg)	150 (331)	260 (573)	350 (772)	453 (999)
Part Number	612-9616	612-9628	612-9640	612-9655

HYDRAULIC LINES

MODEL	CVP16	CVP16	CVP28	CVP40	CVP40	CVP55
Machine Class	2 – 6 Ton	5 – 6 Ton	2 – 6 Ton	7 – 10 Ton	6 – 10 Ton	6 – 10 Ton
Lines	611-9566	203-0983	611-9566	490-0015	611-9569	611-9569

Backfill Blade



BACKFILL BLADE

MODEL	CVP16	CVP28	CVP40	CVP55
Part Number	611-9623	611-9548	211-8200	611-9563

KIT – POST/SHEET DRIVER

MODEL	CVP28
Part Number	611-9551*

*Drives round posts 200–250 mm (8–10 in) and sheet piling 75–150mm (3–6 in).

MINI HYDRAULIC EXCAVATOR ATTACHMENTS



BRACKET							PIN ON
Machine Class	2 Ton	3 – 4 Ton	5 – 6 Ton	7 – 9 Ton	7 – 9 Ton	7 – 9 Ton	10 Ton
Interface Type	Pin On	Pin On	Pin On	Pin On	1/4 YD Pin Lock	1/2 YD Pin Lock	Pin On
Model	CVP16	CVP16, CVP28	CVP16, CVP28	CVP40, CVP55	CVP40, CVP55	CVP40, CVP55	CVP40, CVP55
Part Number	532-9053	532-9063	569-5414	564-9840	416-8031	564-2732	564-9843



Bracket

BRACKET				CW
Machine Class	2 Ton	3 – 4 Ton	5 – 6 Ton	7 – 9 Ton
Interface Type	CW-05	CW-05	CW-10	CW-10
Model	CVP16	CVP16, CVP28	CVP16, CVP28	CVP40, CVP55
Part Number	611-9638	611-9948	611-9550	611-9952



Swivel Head

SWIVEL HEAD				
MODEL	CVP16	CVP28	CVP40	CVP55
Part Number	265-7461	265-7461	264-5907	264-5907
Mounting Bracket Configuration	LG-LG	LG-LG	XL-XL	XL-XL

Contractors' Grapples are a proven product built for your high-volume material handling needs. Designed for long-lasting durability, Contractors' Grapples are made to help you in the toughest of applications.



Contractor's Grapple

GRAPPLE	PIN ON/PIN GRABBER
MODEL	G108
Machine Class	7 – 9 Ton
Part Number	583-5312*

**Requires a thumb ready stick.*



MINI HYDRAULIC EXCAVATOR ATTACHMENTS

Demolition and Sorting Grapples

are designed for fast, productive material handling. Capable of high-volume, production loading and precise sorting, they enhance the productivity and efficiency of your operation. The grapples handle anything from primary and secondary demolition to recycling to get the job done.



G306



G308

DEMOLITION AND SORTING GRAPPLES

MODEL	G306	G308
Machine Class	5 – 6 Ton	7 – 10 Ton
Depth – mm (in)	600 (24)	700 (28)
Overall Width (Jaws Open) – mm (in)	1404 (55)	1558 (61)
Overall Width (Jaws Closed) – mm (in)	732 (29)	875 (34)
Overall Height (Jaws Open) – mm (in)	894 (35)	1049 (41)
Overall Height (Jaws Closed) – mm (in)	1057 (42)	1219 (48)
Grapple Area – L (ft ³)	160 (5.7)	240 (8.5)
Required Hydraulics	2 nd Auxiliary	2 nd Auxiliary
Optimal Flow (Grab) – L/min (gpm)	80 (21)	131 (35)
Optimal Flow (Rotation) – L/min (gpm)	28 (7)	33 (9)
Weight – kg (lb)	332 (732)	494 (1089)
Part Number	576-1250	576-1240

BRACKETS

Model	G306		
Interface	S40	CW-10	Pin On
Part Number	611-9604	611-9950	569-5414

BRACKETS

Model	G308				
Interface	S45	S50	CW-10	Pin On	Pin Lock
Part Number	611-9612	611-9612	611-9952	564-9840 564-9843	416-8031 564-2732

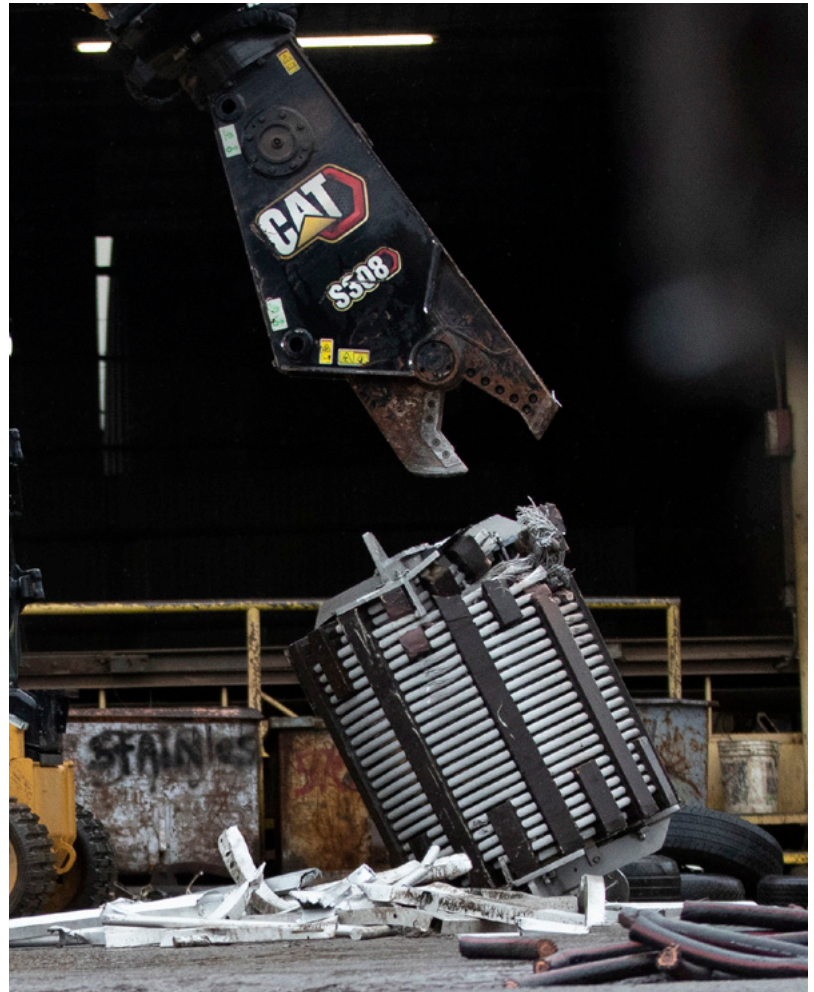
LINES

Model	G306	G308
Part Number	637-4218	630-9703

Cat Shears rotate 360 degrees for rapid repositioning and are designed with a straight, lower jaw to improve the cutting force.



Scrap Shear



SCRAP SHEAR

MODEL	S308
Machine Class	5 – 9 Ton
Height – mm (in)	667 (26)
Width – mm (in)	390 (15)
Length – mm (in)	1709 (67)
Jaw Opening – mm (in)	240 (9)
Required Hydraulics	2 nd Auxiliary
Weight – kg (lb)	550 (1213)
Part Number	583-8100

BRACKETS

Part Number	Description
283-4187	Boom mounted, 305D/E CR
449-9083	Boom mounted, 305.5E CR
583-8140	Boom mounted, Next Gen 5 – 6 Ton
583-8120	Pin on, 7 – 9 Ton
205-3923	CW-10, 7 – 9 Ton
N/A	Stick mounted

LINES

Part Number	Description
583-8121	Boom mounted, Next Gen 5 – 6 Ton
231-7108	305D/E CR, 305.5E CR
583-8137	7 – 9 Ton

MINI HYDRAULIC EXCAVATOR ATTACHMENTS



Cat Hammers are high performance breakers, designed for maximum performance on demolition, construction and road work. Check with your local Cat dealer for the mounting bracket and hydraulic lines to match the hammer of choice.



Hammers
(2 tools included)

Hammer Tool Kit
Included with
B Hammers



HAMMERS

MODEL	B1	B1s	B1	B2	B2s
Height (without tool) – mm (in)	688 (27)	727 (29)	748 (29)	754 (30)	795 (31)
Overall Height – mm (in)	968 (38)	977 (39)	958 (38)	1080 (43)	1091 (43)
Overall Length – mm (in)	340 (13)	340 (13)	208 (8)	340 (13)	340 (13)
Overall Width – mm (in)	300 (12)	300 (12)	199 (8)	300 (12)	300 (12)
Tool Shaft Diameter	40 (1.6)	40 (1.6)	40 (1.6)	45 (1.8)	45 (1.8)
Operating Weight (with tool) – kg (lb)	83 (183)	86 (190)	74 (162)	115 (253)	117 (258)
Min Operating Pressure – kPa (psi)	8798 (1276)	8798 (1276)	8798 (1276)	8798 (1276)	8798 (1276)
Sound – dB	122	118	122	128	122
Required Hydraulics	First Auxiliary	First Auxiliary	First Auxiliary	First Auxiliary	First Auxiliary
Part Number	532-9101	532-9201	573-4711*	532-9102	532-9202

*Pin-On for 300.9D only.

MINI HYDRAULIC EXCAVATOR ATTACHMENTS

HAMMERS (CONT.)				TOP MOUNT
MODEL	B4	B4s	B6	B6s
Height (without tool) – mm (in)	830 (33)	865 (34)	948 (37)	993 (39)
Overall Height – mm (in)	1190 (47)	1195 (47)	1375 (54)	1370 (54)
Overall Length – mm (in)	340 (13)	340 (13)	440 (17)	440 (17)
Overall Width – mm (in)	300 (12)	300 (12)	316 (12)	316 (12)
Tool Shaft Diameter – mm (in)	53 (2.1)	53 (2.1)	68 (2.7)	68 (2.7)
Operating Weight (with tool) – kg (lb)	159 (351)	162 (357)	259 (571)	277 (611)
Minimum Operating Pressure – kPa (psi)	10286 (1492)	10286 (1492)	12238 (1775)	12238 (1775)
Sound – dB	128	124	128	124
Required Hydraulics	First Auxiliary	First Auxiliary	First Auxiliary	First Auxiliary
Part Number	532-9104	532-9204	532-9106	532-9206

HAMMERS (CONT.)				TOP MOUNT
MODEL	B8	B8s	B9	B9s
Height (without tool) – mm (in)	1005 (40)	1044 (41)	1298 (51)	1296 (51)
Overall Height – mm (in)	1413 (56)	1402 (55)	1753 (69)	1733 (68)
Overall Length – mm (in)	440 (17)	440 (17)	530 (21)	530 (21)
Overall Width – mm (in)	316 (12)	316 (12)	400 (16)	400 (16)
Tool Shaft Diameter – mm (in)	75 (3)	75 (3)	85 (3.3)	85 (3.3)
Operating Weight (with tool) – lb (kg)	350 (771)	344 (758)	529 (1166)	518 (1142)
Minimum Operating Pressure – kPa (psi)	11749 (1704)	11749 (1704)	12728 (1846)	12728 (1846)
Sound – dB	133	129	135	125
Required Hydraulics	First Auxiliary	First Auxiliary	First Auxiliary	First Auxiliary
Part Number	532-9108	532-9208	532-9109	532-9209

MINI HYDRAULIC EXCAVATOR ATTACHMENTS



HAMMERS		SIDE MOUNT		
MODEL	B2 Side Mount	B4 Side Mount	B6 Side Mount	B8 Side Mount
Machine Class	1 Ton	3 Ton	5 Ton	8 Ton
Height (without tool) – mm (in)	750 (30)	822 (32)	926 (37)	1016 (40)
Overall Height – mm (in)	1076 (42)	1182 (47)	1353 (53)	1484 (58)
Overall Length – mm (in)	391 (15)	476 (19)	671 (26)	730 (29)
Overall Width – mm (in)	217 (9)	277 (11)	355 (14)	385 (15)
Tool Shaft Diameter	45 (1.8)	53 (2.1)	68 (2.7)	75 (3)
Operating Weight (with tool) – kg (lb)	124 (273)	148 (326)	255 (562)	351 (774)
Minimum Operating Pressure – kPa (psi)	8800 (1276)	10286 (1492)	12238 (1775)	11749 (1704)
Sound – dB	128	128	128	133
Required Hydraulics	First Auxiliary	First Auxiliary	First Auxiliary	First Auxiliary
Pin Diameter – mm (in)	30 (1.2)	40 (1.6)	45 (1.8)	50 (2)
Part Number	576-5540	532-9304	532-9306	532-9308

MINI HYDRAULIC EXCAVATOR ATTACHMENTS

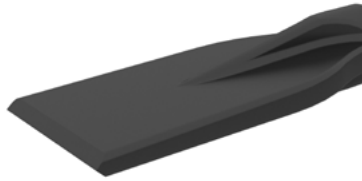


**Hammer Tool Kit
Included with H Hammers**



HAMMERS					TOP MOUNT	
MODEL	H35s	H45s	H55s	H65s	H80s	H95s
Height Without Tool – mm (in)	620 (24)	737 (29)	784 (31)	953 (38)	1057 (42)	1250 (49)
Overall Height – mm (in)	860 (34)	1006 (40)	1108 (44)	1324 (52)	1433 (56)	1666 (66)
Overall Length – mm (in)	311 (12)	311 (12)	451 (18)	451 (18)	535 (21)	520 (21)
Overall Width – mm (in)	300 (12)	300 (12)	346 (14)	346 (14)	485 (19)	512 (20)
Tool Shaft Diameter	40 (1.6)	50 (2)	58 (2.3)	68 (2.7)	75 (3)	87.5 (3.4)
Operating Weight – With Tool – kg (lb)	130 (287)	250 (551)	345 (761)	390 (860)	425 (937)	627 (1382)
Minimum Operating Pressure – kPa (psi)	10000 (1450)	10000 (1450)	10000 (1450)	10000 (1450)	10000 (1450)	10000 (1450)
Sound – dB	120	120	120	124	120	124
Required Hydraulics	First Auxiliary	First Auxiliary	First Auxiliary	First Auxiliary	First Auxiliary	First Auxiliary
Part Number	561-2548	561-2549	561-2551	561-2552	561-2553	561-2555

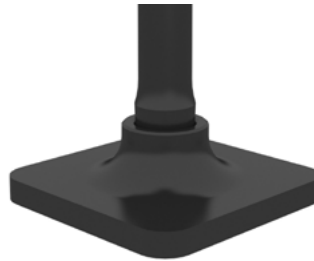
MINI HYDRAULIC EXCAVATOR ATTACHMENTS



Spade Parallel



Spade Transverse



Compacting Plate



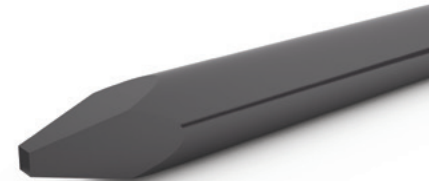
Cone

HAMMER – TOOLS			
Tool	B1	B1*	B2
Moil	532-9151	—	532-9175
Chisel, Inline	542-1752	576-5523*	542-1756
Chisel, Crosscut	542-1753	576-5524*	542-1757
Cone	542-1750	565-6082*	542-1754
Blunt	542-1751	—	542-1755
Compacting Plate	582-1490	—	582-1491
Spade Parallel	582-1495	—	582-1496
Spade Transverse	582-1500	—	582-1501

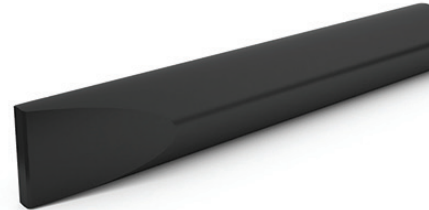
**These are the shorter 360 mm (14.2 in) versions, for use with the 300.9D.*



Post Driver



Moil

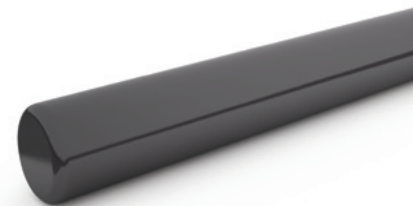


Chisel Crosscut

HAMMER – TOOLS				
Tool	B4	B6	B8	B9
Moil	532-9190	523-3193	532-9120	532-9219
Chisel, Inline	542-1760	523-3191	532-9121	542-1764
Chisel, Crosscut	542-1761	523-3197	532-9119	542-1765
Cone	542-1758	523-3195	532-9118	542-1762
Blunt	542-1759	523-3196	532-9117	542-1763
Compacting Plate	582-1492	582-1493	582-1494	—
Spade Parallel	582-1497	582-1498	582-1499	—
Spade Transverse	582-1502	582-1503	582-1504	—
Post Driver	—	582-1506	582-1507	—



Chisel Inline



Blunt

MINI HYDRAULIC EXCAVATOR ATTACHMENTS



HAMMER – TOOLS

Tool	H35s	H45s	H55s	H65s	H80s	H95s
Chisel, Inline	423-8333	423-8327	423-8310	423-8307	369-1549	369-0793
Chisel, Crosscut	428-8033	428-8025	428-8024	428-8022	399-1711	399-1710
Cone	423-8334	423-8329	423-8312	423-8308	369-1548	369-0792
Blunt	423-8336	423-8331	423-8314	423-8309	376-7947	373-7159
Spade Parallel	433-9659	433-9657	433-9655	433-9653	381-6720	N/A
Spade Transverse	433-9658	433-9656	433-9654	433-9652	381-6719	N/A
Compacting Plate	433-9645	433-9646	433-9648	433-9651	381-6721	N/A

All Cat hammer brackets are interchangeable with B model hammers, H model hammers and vibratory plate compactors (CVP). Brackets are identified by size to help with matching. For example, the small-medium bracket has holes for 230 × 230 mm (9.0 x 9.0 in) and 230 × 290 mm (9.0 x 11.4 in). It will accept B1, B2, B4, H35, and H45 Hammers as well as CVP16 and CVP28.

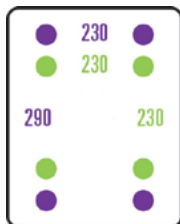
H35s and H45s = Medium Mounting Pattern

H55s and H65s = Large Mounting Pattern

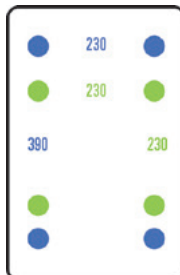
H80s and H95s = Extra Large Mounting Pattern

BRACKET HOLE CONFIGURATIONS

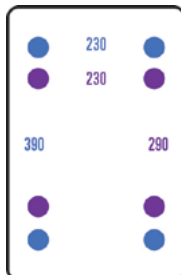
Small-Medium



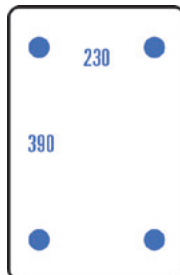
Small-Large



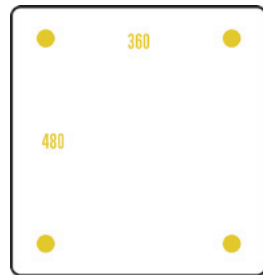
Medium-Large



Large



Extra Large



MINI HYDRAULIC EXCAVATOR ATTACHMENTS

MHE BRACKET AND ATTACHMENT COMPATIBILITY GUIDE

Machine Model	Coupler	Bracket Part Number	Drill Pattern	B Model Hammers			H Model Hammers			Vibratory Plate Compactors		Cold Planers	Mulchers	Grapples	
				B1	B2	B4	H35	H45	H55	CVP16					
MHE 1 – 2T				B1	B2	B4	H35	H45	H55	CVP16					
300.9D	S30	611-9600	SM/MD	●	○	○	○	○	○	○					
301.5 301.6 301.8	PO/PG	532-9055	SM/MD	●	◐	○	●	◐	○	○					
	S30	611-9600	SM/MD	●	◐	○	●	◐	○	○					
	CW05	611-9948	MD/LG	●	◐	○	●	◐	○	○					
302 CR	PO/PG	532-9055	SM/MD	◐	●	○	◐	●	○	○					
	S30	611-9600	SM/MD	◐	●	○	◐	●	○	○					
	CW05	611-9638	SM/MD	◐	●	○	◐	●	○	○					
	CW05	611-9948	MD/LG	◐	●	○	◐	●	○	○					
302.7	PO/PG	532-9053	SM/LG	○	●	◐	○	○	◐	●					
		532-9057	SM/MD	○	●	◐	○	●	○	●					
	S30	611-9600	SM/MD	○	●	◐	○	●	○	●					
	CW05	611-9638	SM/MD	○	●	◐	○	●	○	●					
	CW05	611-9948	MD/LG	○	●	◐	○	●	◐	●					
MHE 3 – 4T				B2	B4	B6	H55			CVP16	CVP28				
303 303.5	PO/PG	532-9059	SM/MD	◐	●	○	○			●	●				
		532-9063	SM/LG	◐	●	○	●			●	●				
		532-9275*	MD/LG	◐	●	○	●			●	●				
	S40	611-9602	SM/MD	◐	●	○	○			●	●				
		611-9604	SM/LG	◐	●	○	●			●	●				
	CW05	611-9638	SM/MD	◐	●	○	○			●	●				
	CW05	611-9948	MD/LG	◐	●	○	●			●	●				
304 304 CR	PO/PG	532-9059	SM/MD	○	●	○	○			●	●				
		532-9063	SM/LG	○	●	◐	●			●	●				
		532-9275*	MD/LG	○	●	◐	●			●	●				
	S40	611-9602	SM/MD	○	●	○	○			●	●				
		611-9604	SM/LG	○	●	◐	●			●	●				
	CW05	611-9638	SM/MD	○	●	○	○			●	●				
		611-9948	MD/LG	○	●	◐	●			●	●				
		CW10	611-9950	SM/LG	○	●	◐	●			●	●			
MHE 5 – 6T				B4	B6	B8	H55	H65		CVP16	CVP28	CVP40	PC35	HM608	G306
305 305.5	PO/PG	569-5414	SM/LG	◐	●	○	◐	●		◐	●	○	●	○	●
		532-9275*	MD/LG	◐	●	○	◐	●		◐	●	○	○	○	○
		611-9614	XL	○	○	○	○	○		○	○	◐ ^{305.5}	○	○	○
	S40	611-9602	SM/MD	◐	○	○	○	○		◐	●	○	○	○	○
		611-9604	SM/LG	◐	●	○	◐	●		◐	●	○	●	○	●
	CW10	611-9950	SM/LG	◐	●	○	◐	●		◐	●	○	●	○	●
		611-9952	XL	○	○	○	○	○		○	○	◐ ^{305.5}	○	○	○

*Requires mounting kit.

● Optimal

◐ Acceptable

○ Not Allowed

MINI HYDRAULIC EXCAVATOR ATTACHMENTS

MHE BRACKET AND ATTACHMENT COMPATIBILITY GUIDE *(continued)*

Machine Model	Coupler	Bracket Part Number	Drill Pattern	B Model Hammers			H Model Hammers			Vibratory Plate Compactors			Cold Planers		Mulchers		Grapples
				B4	B6	B8	H55	H65		CVP16	CVP28	CVP40	PC35		HM608		G306
MHE 5 – 6T				B4	B6	B8	H55	H65		CVP16	CVP28	CVP40	PC35		HM608		G306
306	PO/PG	569-5414	SM/LG	○	●	○	○	●		○	●	○	●		●		●
		532-9275*	MD/LG	○	●	○	○	●		○	●	○	○		○		○
		611-9614	XL	○	○	○	○	○		○	○	○	○		○		○
	S40	611-9602	SM/MD	○	○	○	○	○		○	●	○	○		●		○
		611-9604	SM/LG	○	●	○	○	●		○	●	○	●		●		●
	CW10	611-9950	SM/LG	○	●	○	○	●		○	●	○	●		●		●
611-9952		XL	○	○	○	○	○		○	○	○	○		○		○	
MHE 7 – 9T				B6	B8	B9	H65	H80	H95	CVP28	CVP40	CVP55	PC35	PC45	HM810	HM912	G308
307.5 308 309	PO/PG	532-9067	LG	○	●	○	○	○	○	○	○	○	○	○	● 7.5/8	● 9	○
		564-9840	XL	○	○	●	○	●	●	○	●	●	○	●	○	○	●
	S45	611-9606	LG	○	●	○	○	○	○	○	○	○	○	○	● 7.5/8	● 9	○
		611-9608	XL	○	○	●	○	●	●	○	●	●	○	●	○	○	●
	S50	611-9610	LG	○	●	○	○	○	○	○	○	○	○	○	● 7.5/8	● 9	○
		611-9612	XL	○	○	●	○	●	●	○	●	●	○	●	○	○	●
	1/4 YD PL	443-7285	LG	○	●	○	○	○	○	○	○	○	○	○	● 7.5/8	● 9	○
		416-8031	XL	○	○	●	○	●	●	○	●	●	○	●	○	○	●
	CW10	611-9950	SM/LG	○	●	○	○	○	○	○	○	○	○	○	● 7.5/8	● 9	○
		611-9952	XL	○	○	●	○	●	●	○	●	●	○	●	○	○	●
MHE 10T				B9	H80	H95				CVP40	CVP55		PC45		HM810		G308
310	PO/PG	564-9843	XL	●	●	●				○	●		●		○		●
		611-9954	LG	○	○	○				○	○		○		●		○
	S45	611-9606	LG	○	○	○				○	○		○		●		○
		611-9608	XL	●	●	●				○	●		●		○		●
	S50	611-9612	XL	●	●	●				○	●		●		○		●
		611-9610	LG	○	○	○				○	○		○		●		○
	1/2 YD PL	564-2732	XL	●	●	●				○	●		●		○		●
	CW10	611-9950	SM/LG	○	○	○				○	○		○		●		○
611-9952		XL	●	●	●				○	●		●		○		●	

*Requires mounting kit.



Optimal



Acceptable



Not Allowed

HAMMER – LINES

Machine Class	1 Ton	2 Ton	3-4 Ton	5 – 9 Ton	7 – 10 Ton
Hammer Compatibility	B1, B2	B1, B2, B4	B4, B6	B4, B6, B8	B9
Part Number	532-9086	532-9087	532-9088	532-9089	580-9885

HAMMER – LINES

Machine Class	1 Ton	2 Ton	2 Ton	3 Ton	3 – 6 Ton	5 – 6 Ton	7 – 9 Ton	7 – 10 Ton
Hammer Compatibility	H35s	H45s	H55s	H95s	H55s	H65s	H65s	H80s, H95s
Part Number	290-3181	292-0231	329-7275	394-6219	330-5359	270-8682	353-8830	397-2420

MINI HYDRAULIC EXCAVATOR ATTACHMENTS

COLD PLANERS

MODEL	PC35	PC45
Working Width – mm (in)	350 (14)	450 (18)
Overall Width – mm (in)	856 (34)	943 (37)
Overall Length – mm (in)	860 (34)	947 (37)
Overall Height – mm (in)	808 (32)	866 (34)
Max Cutting Depth – mm (in)	120 (4.7)	150 (6.0)
Required Hydraulics	STD Flow	STD Flow
Weight – kg (lb)	490 (1080)	666 (1468)
Part Number	619-6535*	619-6545*

*Requires hammer bracket and connecting lines

BITS/ACCESSORIES

Part Number	Description
560-2306	Heavy Duty Asphalt Bit
561-8132	Concrete Bit
561-8134	All Purpose Bit (asphalt and concrete)
226-9308	Block Holder for bit
543-5470	Punch (bit remover)
539-6298	Puller Fork (bit remover)



Cold Planers are perfect for small residential and commercial asphalt and concrete paving jobs. They are economical and are ideal for milling imperfections prior to resurfacing, removing deteriorated pavement and traffic lane stripes other jobs needing a limited amount of planing work.



Cold Planer



Heavy Duty Asphalt Bit



Concrete Bit



All Purpose Bit (asphalt/concrete bit)

Cat Mulchers are designed for high performance

cutting and mulching of vegetation, saplings and undergrowth from overgrown agricultural areas and forested terrain. The hydraulic mulchers reduce saplings, shrubs and trees into mulched material, making it ideal for environmental maintenance such as brush clearing and creating fire lanes. Other applications include reclaiming untilled land, removing foliage from building construction sites and shredding pruned material and organic waste for biomass production. The bite limiter mulcher restricts how far teeth can cut into material to significantly reduce stall and recovery time.



Standard Mulcher

KIT – CASE DRAIN

Machine Class	6 Ton	7 – 10 Ton
Part Number	609-6156	609-6155

KIT – SWITCH

Machine Class	8 Ton*	7 – 10 Ton**
Part Number	523-5933	557-5072

*308E2 ONLY.

**307.5, 308CR, 309CR, 310 Next Gen ONLY.

BRACKET

Machine Class	10 Ton
Part Number	581-7636

STANDARD MULCHERS

(INCLUDES BRACKET)

MODEL	HM208	HM210
Machine Class	7 – 9 Ton	7 – 9 Ton
Overall Width – mm (in)	1026 (40)	1226 (48)
Working Width – mm (in)	818 (32)	1012 (40)
Overall Height – mm (in)	1065 (42)	1065 (42)
Overall Length – mm (in)	714 (28)	714 (28)
Weight – kg (lb)	490 (1080)	540 (1091)
Required Hydraulics	First Auxiliary	First Auxiliary
Part Number	504-6012	504-6013

BITE LIMITER MULCHERS

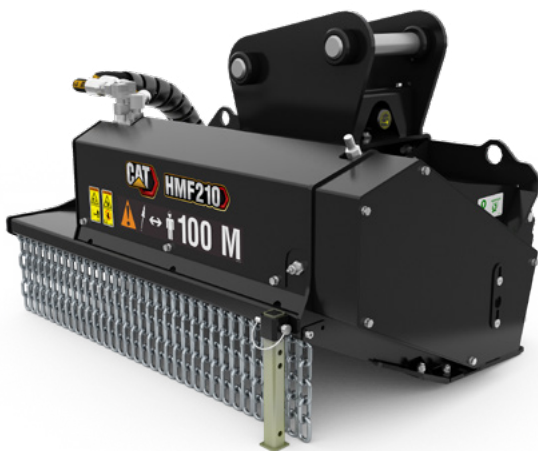
MODEL	HM608	HM810	HM912
Machine Class	6 Ton	7 – 9 Ton	9 Ton
Overall Width – mm (in)	1388 (55)	1566 (62)	1806 (71)
Working Width – mm (in)	794 (31)	960 (38)	1200 (47)
Overall Height – mm (in)	779 (31)	901 (35.5)	901 (35.5)
Overall Length – mm (in)	555 (229)	713 (28)	713 (28)
Weight – kg (lb)	501 (1105)	686 (1512)	750 (1654)
Required Hydraulics	First Auxiliary	First Auxiliary	First Auxiliary
Part Number	646-4929	646-4928	646-4927



Bite Limiter Mulcher

NOTE: For teeth options, see Mulcher Teeth Brochure PEDJ1253.

Cat Flail Mowers are designed for high performance cutting of vegetation, saplings, overgrown agricultural areas, retention ponds, and forested terrain. The hydraulic flail mowers reduce weeds, saplings, shrubs and small trees into mulched material, making them ideal for environmental maintenance applications such as mowing along ditches, fence rows and retention ponds, controlling overgrowth and cleaning up high banks and slopes.



Flail Mowers



FLAIL MOWERS (INCLUDES PIN ON BRACKET)		PIN ON
MODEL	HMF110	HMF210
Machine Class	5 – 6 Ton	7 – 9 Ton
Overall Width – mm (in)	1184 (47)	1184 (47)
Working Width – mm (in)	1000 (39)	1000 (39)
Overall Height – mm (in)	741 (29)	766 (30)
Overall Length – mm (in)	842 (33)	842 (33)
Weight – kg (lb)	377 (831)	383 (844)
Required Hydraulics	First Auxiliary	First Auxiliary
Part Number	504-6010*	504-6011**

*Requires case drain kit 609-6156.

**Requires case drain kit 609-6155.

KIT – CASE DRAIN			BRACKET	
Machine Class	5 – 6 Ton	7 – 9 Ton	Machine Class	10 Ton
Part Number	609-6156	609-6155	Part Number	581-7634*

*For use with Next Gen 310 only.



Excavator Rakes are used for grubbing, piling, and loading trucks and grinders in the general construction and forestry industries.

RAKES	PIN ON
Machine Class	7 – 9 Ton
Overall Width – mm (in)	1220 (48)
Overall Height – mm (in)	—
Overall Length – mm (in)	—
Weight – kg (lb)	304 (670)
Part Number	456-5071



Ripper

Built to cut through dense dirt, loosen rocky soil and break below the frost layer,

Cat rippers take on some of the most challenging ground conditions. Plus, because they are made for specific Cat models, they can better transfer machine power into ripping power.



RIPPERS	PIN ON			
Machine Class	3 – 4 Ton	5 – 6 Ton	7 – 9 Ton	10 Ton
Width – mm (in)	253 (10)	281 (11)	344 (14)	420 (17)
Weight	45 (99)	61 (134)	107 (236)	169 (373)
Tip Radius	650 (26)	810 (32)	1039 (41)	1119 (44)
Shank Length	490 (19)	676 (27)	861 (34)	950 (37)
Overall Length – mm (in)	659 (26)	822 (32)	1066 (42)	795 (31)
Part Number	453-8570	453-8571	453-8572	546-4141

MINI HYDRAULIC EXCAVATOR ATTACHMENTS

XTC (eXtra Tool Carrier) ATTACHMENTS (304.5E2 XTC and 306 XTC machines only)

The Cat XTC Mini Excavators include a skid steer loader interface in place of the standard excavator blade, which provides versatility and work tool integration with the use of compact loader attachments.



**Multi-Purpose Buckets
with Bolt-On Cutting Edge**



**General Purpose Buckets
with Bolt-On Cutting Edge**



Angle blade

MULTI-PURPOSE BUCKET WITH BOLT-ON CUTTING EDGE SSL

Width – mm (in)	2036 (80)
Capacity – m ³ (yd ³)	0.4 (0.5)
Height – mm (in)	388 (15)
Length – mm (in)	724 (29)
Weight – kg (lb)	461 (1016)
Part Number	426-6548

GENERAL PURPOSE BUCKET WITH BOLT-ON CUTTING EDGE SSL

Width – mm (in)	2036 (80)
Capacity – m ³ (yd ³)	0.5 (0.6)
Height – mm (in)	426 (17)
Length – mm (in)	708 (28)
Weight – kg (lb)	286 (631)
Part Number	279-5377

BLADE WITH WELD-ON CUTTING EDGE SSL

Width – mm (in)	2030 (80)
Height – mm (in)	610 (24)
Part Number	487-2025

ANGLE BLADE SSL

Overall Width – mm (in)	2198 (87)
Width Fully Angled – mm (in)	1949 (77)
Length – mm (in)	753 (30)
Weight – kg (lb)	331 (730)
Required Hydraulics	Std Flow
Part Number	177-1990

XTC MACHINE ATTACHMENTS MACHINE SETUP

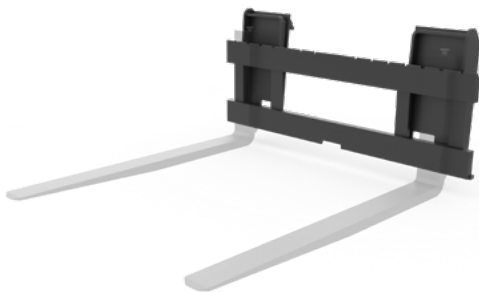
Attachment	Attachment Model	2-way flow
Skid Steer Loader	SSL	
Multi-Purpose Buckets		✓
Angle Blade		✓
Trencher (legacy/current)	T9B/T112	✓
Power Box Rake (legacy/current)	PR172/PR118	✓
Angle Brooms	BA118	✓

XTC ATTACHMENTS (SSL INTERFACE)



MULTI-PURPOSE BUCKET BOLT-ON CUTTING EDGE SSL

Width – mm (in)	1833 (74)
Capacity – m ³ (yd ³)	0.4 (0.5)
Height – mm (in)	388 (15)
Length – mm (in)	724 (29)
Weight – kg (lb)	436 (961)
Part Number	426-6536



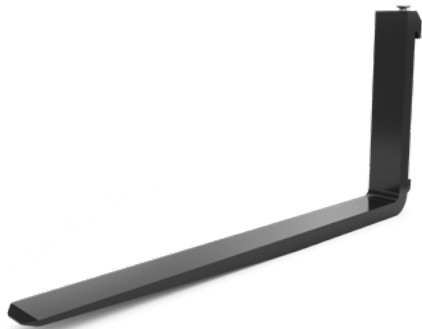
PALLET FORK CARRIAGE SSL

Width – mm (in)	1312 (52)
Max Tine Spacing – mm (in)	1176 (46)
Height – mm (in)	550 (22)
Length – mm (in)	143 (6)
Weight – kg (lb)	113 (249)
Part Number	261-1350



PALLET FORK CARRIAGE SSL

Width – mm (in)	1270 (50)
Max Tine Spacing – mm (in)	1008 (40)
Height – mm (in)	912 (36)
Length – mm (in)	261 (10)
Weight – kg (lb)	94 (207)
Part Number	351-9371

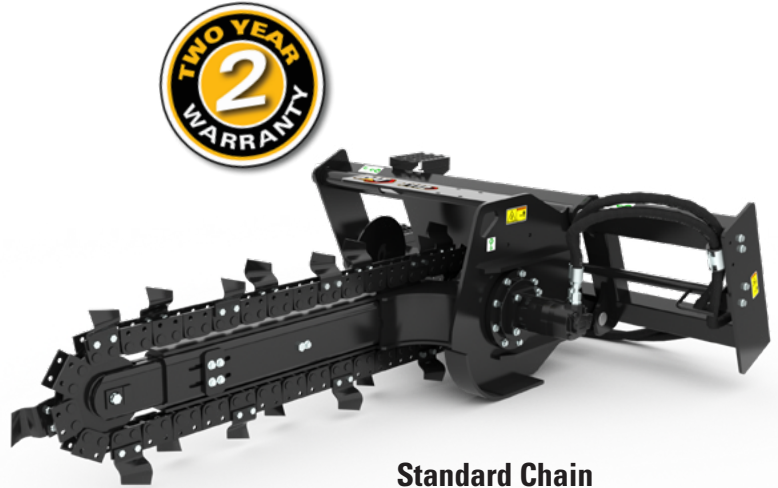


PALLET FORK SSL

Width – mm (in)	100 (4)
Tine Thickness – mm (in)	40 (1.6)
Height – mm (in)	541 (21)
Length – mm (in)	1070 (42)
Weight – kg (lb)	104 (47)
Part Number	195-6942

MINI HYDRAULIC EXCAVATOR ATTACHMENTS

TRENCHERS		SSL
MODEL	T112	
Side Shift Control	Manual	
Cutting Width – mm (in)	152 (6)	
Overall Width – mm (in)	1901 (75)	
Overall Length – mm (in)	2705 (107)	
Overall Height – mm (in)	786 (31)	
Side Shift Travel – mm (in)	559 (22)	
Standard Boom Length – mm (in)	1219 (48)	
Weight – kg (lb)	488 (1076)	
Required Hydraulics	Std Flow	
Part Number w/Standard Chain	233-2346	

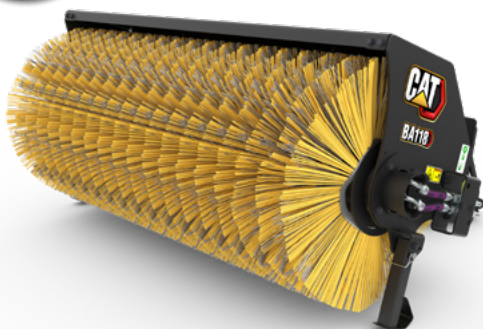


Standard Chain

ANGLE BROOMS		SSL
MODEL	BA118	
Width – mm (in)	2637 (104)	
Sweeping Width – mm (in)	2119 (83)	
Height – mm (in)	918 (36)	
Length – mm (in)	1741 (69)	
Weight – kg (lb)	411 (906)	
Required Hydraulics	Std Flow	
Angling	Manual	
Part Number	565-4831	



Angle Brooms



POWER BOX RAKES		SSL
MODEL	PR118	
Angle Control	Manual	
Overall Width – mm (in)	2057 (81)	
Raking Width at Max Angle – mm (in)	1727 (68)	
Overall Height – mm (in)	847 (33)	
Weight – kg (lb)	408 (900)	
Required Hydraulics	Std Flow	
Part Number	608-0655	

Power
Box Rakes





AEXQ3092-03 (10-2025)
Replaces AEXQ3092-02
(Global)

© 2025 Caterpillar. All Rights Reserved. CAT, CATERPILLAR, LET'S DO THE WORK, VisionLink™, their respective logos, "Caterpillar Corporate Yellow", the "Power Edge" and Cat "Modern Hex" trade dress as well as corporate and product identity used herein, are trademarks of Caterpillar and may not be used without permission

