



# 323 GC

## Hydraulic Excavator

# Technical Specifications

Configurations and features may vary by region. Please consult your Cat® dealer for availability in your area.

### Table of Contents

<b>Specifications</b> .....	<b>2</b>
Engine .....	2
Swing Mechanism .....	2
Weights .....	2
Track .....	2
Drive .....	2
Hydraulic System .....	2
Service Refill Capacities .....	2
Standards .....	2
Sound Performance .....	2
Operating Weights and Ground Pressures .....	3
Major Component Weights .....	3
Dimensions .....	4
Working Ranges and Forces .....	5
Reach Boom Lift Capacities – Counterweight: 4.7 mt (10,360 lb) .....	6
Bucket Specifications and Compatibility .....	8
Attachments Offering Guide .....	10
<b>Standard and Optional Equipment</b> .....	<b>16</b>
<b>Dealer Installed Kits and Attachments</b> .....	<b>18</b>

# 323 GC Hydraulic Excavator Specifications

## Engine

Engine Model	Cat® C7.1	
Net Power		
ISO 9249	117 kW	157 hp
ISO 9249 (DIN)	159 hp (metric)	
Engine Power		
ISO 14396	118 kW	158 hp
ISO 14396 (DIN)	160 hp (metric)	
Bore	105 mm	4 in
Stroke	135 mm	5 in
Displacement	7.01 L	428 in <sup>3</sup>
Biodiesel capability	Up to B20 <sup>(1)</sup>	

- Meets Brazil MAR-1 and China Nonroad Stage III emission standards, equivalent to U.S. EPA Tier 3 and EU Stage IIIA.
- Recommended for use up to 4500 m (14,760 ft) altitude with engine power derate above 3000 m (9,840 ft).
- Advertised power is tested per the specified standard in effect at the time of manufacture.
- Net power advertised is the power available at the flywheel when the engine is equipped with fan, air intake system, exhaust system and alternator.
- Engine speed at 1,800 rpm.

<sup>(1)</sup>Cat engines are compatible with diesel fuel blended with the following lower-carbon intensity fuels up to:

- ✓ 100% biodiesel FAME (fatty acid methyl ester)\*
- ✓ 100% renewable diesel, HVO (hydrogenated vegetable oil) and GTL (gas-to-liquid) fuels

Refer to guidelines for successful application. Please consult your Cat dealer or “Caterpillar Machine Fluids Recommendations” (SEBU6250) for details.

\*For use of blends higher than 20% biodiesel, consult your Cat dealer.

## Swing Mechanism

Swing Speed	11.25 rpm	
Maximum Swing Torque	82.0 kN·m	60,300 lbf·ft

## Weights

Operating Weight	22 600 kg	49,800 lb
------------------	-----------	-----------

- Long undercarriage, Reach boom, R2.9 m (9'5") Semi-HD Reach stick, GD 1.3 m<sup>3</sup> (1.70 yd<sup>3</sup>) bucket, 600 mm (24") triple grouser shoes and 4.7 mt (10,360 lb) counterweight.

## Track

Standard Track Shoes Width	600 mm	24 in
Optional Track Shoes Width	790 mm	31 in
Number of Shoes (each side)	49	
Number of Track Rollers (each side)	8	
Number of Carrier Rollers (each side)	2	

## Drive

Gradeability	35°/70%	
Maximum Travel Speed	5.7 km/h	3.5 mph
Maximum Drawbar Pull	205 kN	45,996 lbf

## Hydraulic System

Main System – Maximum Flow – Implement	429 L/min	113 gal/min
Maximum Pressure – Equipment – Implement	35 000 kPa	5,075 psi
Maximum Pressure – Travel	34 300 kPa	4,974 psi
Maximum Pressure – Swing	26 800 kPa	3,886 psi
Boom Cylinder – Bore	120 mm	5 in
Boom Cylinder – Stroke	1260 mm	50 in
Stick Cylinder – Bore	135 mm	5 in
Stick Cylinder – Stroke	1504 mm	59 in
Bucket Cylinder – Bore	115 mm	5 in
Bucket Cylinder – Stroke	1104 mm	43 in

## Service Refill Capacities

Fuel Tank Capacity	345 L	91.1 gal
Cooling System	25 L	6.6 gal
Engine Oil (with filter)	25 L	6.6 gal
Swing Drive	5 L	1.3 gal
Final Drive (each)	5 L	1.3 gal
Hydraulic System (including tank)	234 L	61.8 gal
Hydraulic Tank (including suction pipe)	115 L	30.4 gal

## Standards

Brakes	ISO 10265:2008
Cab/ROPS	ISO 12117-2:2008
Cab/FOGS (optional)	ISO 10262:1998 Level II

## Sound Performance

ISO 6395:2008 (external)	99 dB(A)
ISO 6396:2008 (inside cab)	71 dB(A)

- When properly installed and maintained, the cab offered by Caterpillar, when tested with doors and windows closed according to ANSI/SAE J1166OCT98, meets OSHA and MSHA requirements for operator sound exposure limits in effect at time of manufacture.
- Hearing protection may be needed when operating with an open operator station and cab (when not properly maintained or doors/windows open) for extended periods or in a noisy environment.

# 323 GC Hydraulic Excavator Specifications

## Operating Weights and Ground Pressures

	600 mm (24") Triple Grouser Shoes		790 mm (31") Triple Grouser Shoes	
	Weight	Ground Pressure	Weight	Ground Pressure
	kg (lb)	kPa (psi)	kg (lb)	kPa (psi)
<b>Base Machine Configurations</b>				
<b>HD Base Frame with Track Rollers and Carrier Rollers</b>				
<b>4.7 mt (10,360 lb) Counterweight + Long Undercarriage Base Machine</b>				
Reach Boom + 2.9 m (9'5") Semi-HD Bare Reach Stick + 1.3 m <sup>3</sup> (1.70 yd <sup>3</sup> ) GD Bucket	22 600 (49,800)	47 (6.8)	23 300 (51,400)	36.8 (5.3)

All operating weights include a 90% fuel tank with 75 kg (165 lb) operator.

## Major Component Weights

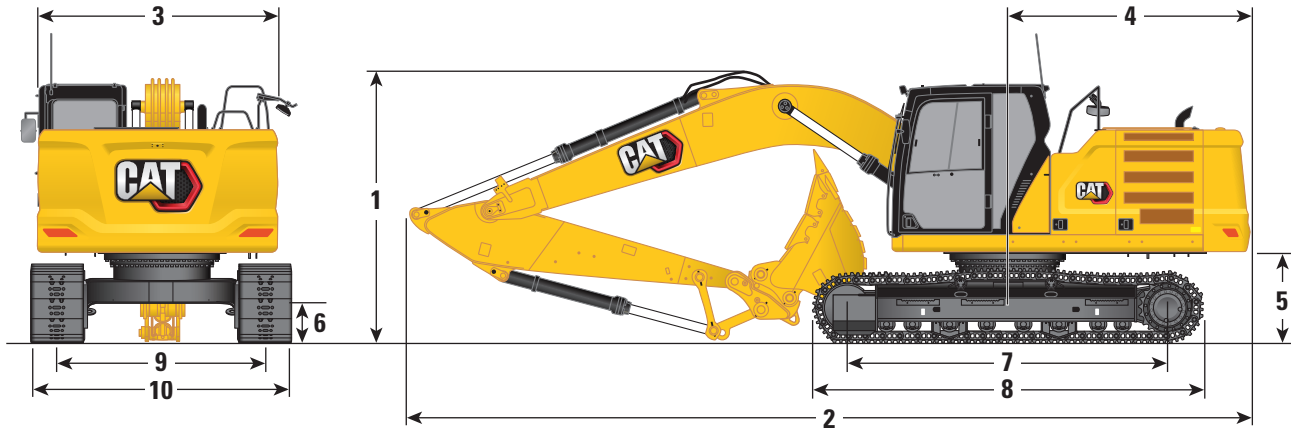
	kg	lb
Base Machine (with upper frame, long undercarriage, 4.7 mt [10,360 lb] counterweight – does not include boom, stick, bucket, boom cylinders, stick cylinder, bucket cylinder, tracks, 90% fuel tank and 75 kg [165 lb] operator).	15 600	34,400
Track Shoes:		
600 mm (24") Width, 10 mm (0.39") Thick, Triple Grouser Track Shoes	2690	5,900
790 mm (28") Width, 10 mm (0.39") Thick, Triple Grouser Track Shoes	3370	6,700
Two Boom Cylinders	340	700
Weight of 90% Fuel Tank and 75 kg (165 lb) Operator	310	700
Counterweight:		
4.7 mt (10,360 lb) Counterweight	4700	10,400
Swing Frame:		
HD Swing Frame	2120	4,700
Undercarriage:		
HD Base Frame with Standard Track Rollers and Standard Carrier Rollers	4470	9,900
Boom (including lines, pins, stick cylinder):		
Reach Boom 5.7 m (18'8")	1690	3,700
Sticks (including lines, pins, bucket cylinder, bucket linkage):		
Semi-HD Reach Stick R2.9B1 (9'6")	1080	2,400
Semi-HD Bare Reach Stick R2.9B1 (9'6")	1070	2,400
Semi-HD Reach Stick R2.5B1 (8'2")	1020	2,300
Semi-HD Bare Reach Stick R2.5B1 (8'2")	1010	2,200
Buckets (without linkage):		
1.30 m <sup>3</sup> (1.48 yd <sup>3</sup> ) GD	900	2,000
1.30 m <sup>3</sup> (1.70 yd <sup>3</sup> ) HD	1070	2,400

Refer to page 8 for a complete list of bucket options.

# 323 GC Hydraulic Excavator Specifications

## Dimensions

All dimensions are approximate and may vary depending on bucket selection.

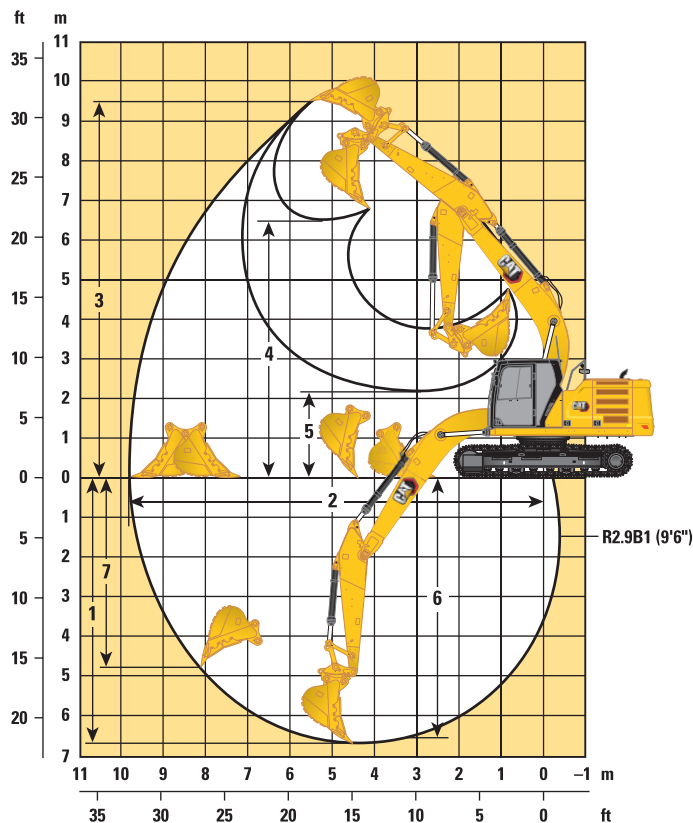


Boom Option	Reach Boom 5.7 m (18'8")			
Stick Option	Reach Stick R2.9B1 (9'6")		Reach Stick R2.5B1 (8'2")	
<b>1 Machine Height:</b>				
Cab Height	2960 mm	9'7"	2960 mm	9'7"
FOGS Height	3104 mm	10'2"	3104 mm	10'2"
Handrail Height	2954 mm	9'7"	2954 mm	9'7"
With Boom/Stick/Bucket Installed	3162 mm	10'4"	3079 mm	10'1"
With Boom/Stick Installed	2913 mm	9'6"	2913 mm	9'6"
With Boom Installed	2475 mm	8'1"	2475 mm	8'1"
<b>2 Machine Length:</b>				
With Boom/Stick/Bucket Installed	9531 mm	31'3"	9531 mm	31'3"
With Boom/Stick Installed	9499 mm	31'2"	9499 mm	31'2"
With Boom Installed	8454 mm	27'7"	8454 mm	27'7"
<b>3 Upperframe Width</b>	2780 mm	9'1"	2780 mm	9'1"
<b>4 Tail Swing Radius</b>	2833 mm	9'3"	2833 mm	9'3"
<b>5 Counterweight Clearance</b>	1048 mm	3'4"	1048 mm	3'4"
<b>6 Ground Clearance</b>	468 mm	1'5"	468 mm	1'5"
<b>7 Length to Center of Rollers</b>	3650 mm	12'0"	3650 mm	12'0"
<b>8 Track Length</b>	4450 mm	14'6"	4450 mm	14'6"
<b>9 Track Gauge</b>	2380 mm	7'8"	2380 mm	7'8"
<b>10 Undercarriage Width:</b>				
600 mm (24") Shoes	2980 mm	9'8"	2980 mm	9'8"
790 mm (31") Shoes	3170 mm	10'4"	—	—
Bucket Type	GD			
Bucket Capacity	1.30 m <sup>3</sup>	1.70 yd <sup>3</sup>	1.30 m <sup>3</sup>	1.70 yd <sup>3</sup>
Bucket Tip Radius	1584 mm	5'2"	1584 mm	5'2"

# 323 GC Hydraulic Excavator Specifications

## Working Ranges and Forces

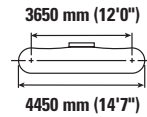
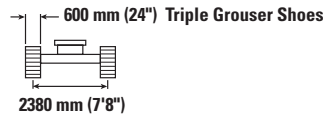
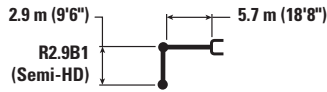
All dimensions are approximate and may vary depending on bucket selection.



Boom Option	Reach Boom 5.7 m (18'8")			
	Reach Stick R2.9B1 (9'6")		Reach Stick R2.5B1 (8'2")	
1 Maximum Digging Depth	6730 mm	22'1"	6300 mm	20'7"
2 Maximum Reach at Ground Line	9870 mm	32'5"	9470 mm	31'0"
3 Maximum Cutting Height	9450 mm	31'0"	9260 mm	30'4"
4 Maximum Loading Height	6490 mm	21'4"	6290 mm	20'6"
5 Minimum Loading Height	2170 mm	7'1"	2590 mm	8'5"
6 Maximum Depth Cut for 2440 mm (8'0") Level Bottom	6560 mm	21'6"	6110 mm	20'0"
7 Maximum Vertical Wall Digging Depth	5610 mm	18'5"	5220 mm	17'1"
Bucket Digging Force (ISO)	140 kN	31,520 lbf	140 kN	31,520 lbf
Stick Digging Force (ISO)	107 kN	23,970 lbf	107 kN	23,970 lbf
Bucket Type	GD			
Bucket Capacity	1.30 m <sup>3</sup>	1.70 yd <sup>3</sup>	1.30 m <sup>3</sup>	1.70 yd <sup>3</sup>
Bucket Tip Radius	1584 mm	5'2"	1584 mm	5'2"

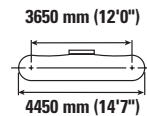
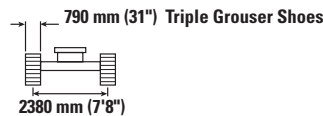
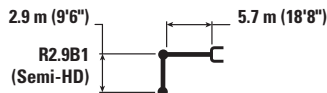
# 323 GC Hydraulic Excavator Specifications

## Reach Boom Lift Capacities – Counterweight: 4.7 mt (10,360 lb) – without Bucket



Reach mm in	kg lb	1500 mm/60 in		3000 mm/120 in		4500 mm/180 in		6000 mm/240 in		7500 mm/300 in		mm in		
7500 mm 300 in	kg lb							*4550	*4550			*3900	*3900	6160
6000 mm 240 in	kg lb							*4900	*4900			*3600	*3600	7290
4500 mm 180 in	kg lb							*5400	*5400	*5100	4000	*3550	*3550	7990
3000 mm 120 in	kg lb					*7950	*7950	*6250	5400	*5450	3900	*3600	3300	8360
1500 mm 60 in	kg lb					*9600	7750	*7050	5200	*5850	3800	*3850	3200	8450
0 mm 0 in	kg lb			*6250	*6250	*10 500	7450	*7650	5000	5750	3700	*4250	3250	8260
-1500 mm -60 in	kg lb	*6650	*6650	*10 750	*10 750	*10 600	7400	*7850	4950	5700	3700	*5000	3550	7780
-3000 mm -120 in	kg lb	*11 450	*11 450	*14 050	*14 050	*9950	7450	*7350	5000			*6050	4150	6940
-4500 mm -180 in	kg lb			*11 200	*11 200	*8050	7650					*6100	5700	5590

## Reach Boom Lift Capacities – Counterweight: 4.7 mt (10,360 lb) – without Bucket



Reach mm in	kg lb	1500 mm/60 in		3000 mm/120 in		4500 mm/180 in		6000 mm/240 in		7500 mm/300 in		mm in		
7500 mm 300 in	kg lb							*4550	*4550			*3900	*3900	6160
6000 mm 240 in	kg lb							*4900	*4900			*3600	*3600	7290
4500 mm 180 in	kg lb							*5400	*5400	*5100	4150	*3550	*3550	7990
3000 mm 120 in	kg lb					*7950	*7950	*6250	5600	*5450	4050	*3600	3450	8360
1500 mm 60 in	kg lb					*9600	8000	*7050	5400	*5850	3950	*3850	3350	8450
0 mm 0 in	kg lb			*6250	*6250	*10 500	7750	*7650	5200	6000	3850	*4250	3400	8260
-1500 mm -60 in	kg lb	*6650	*6650	*10 750	*10 750	*10 600	7650	*7850	5150	5950	3850	*5000	3650	7780
-3000 mm -120 in	kg lb	*11 450	*11 450	*14 050	*14 050	*9950	7750	*7350	5200			*6050	4300	6940
-4500 mm -180 in	kg lb			*11 200	*11 200	*8050	7950					*6100	5900	5590



ISO 10567:2007



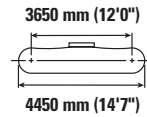
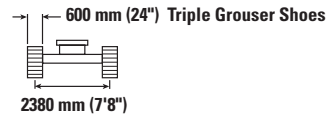
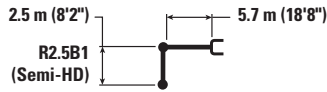
\* Indicates that the load is limited by hydraulic lifting capacity rather than tipping load. The above loads are in compliance with hydraulic excavator lift capacity standard ISO 10567:2007. They do not exceed 87% of hydraulic lifting capacity or 75% of tipping load. Weight of all lifting accessories must be deducted from the above lifting capacities. Lifting capacities are based on the machine standing on a firm, uniform supporting surface. The use of a work tool attachment point to handle/lift objects, could affect the machine lift performance.

Lift capacity stays with ±5% for all available track shoes.

Always refer to the appropriate Operation and Maintenance Manual for specific product information.

# 323 GC Hydraulic Excavator Specifications

## Reach Boom Lift Capacities – Counterweight: 4.7 mt (10,360 lb) – without Bucket



		3000 mm/120 in		4500 mm/180 in		6000 mm/240 in		7500 mm/300 in				mm in
7500 mm 300 in	kg lb									*4700 <b>*10,500</b>	*4700 <b>*10,500</b>	5610 17'11"
6000 mm 240 in	kg lb					*5350 <b>*11,750</b>	*5350 <b>*11,750</b>			*4350 <b>*9,550</b>	*4350 <b>*9,550</b>	6840 22'2"
4500 mm 180 in	kg lb			*6750 <b>*14,550</b>	*6750 <b>*14,550</b>	*5800 <b>*12,600</b>	5600 12,050	*4800 4000		*4250 <b>*9,300</b>	3900 8,650	7570 24'8"
3000 mm 120 in	kg lb			*8500 <b>*18,250</b>	8100 17,500	*6550 <b>*14,200</b>	5400 11,600	*5700 <b>*12,400</b>	3900 8,400	*4350 <b>*9,550</b>	3550 7,850	7960 26'1"
1500 mm 60 in	kg lb			*10 000 <b>*21,600</b>	7650 16,550	*7300 <b>*15,850</b>	5150 11,150	5850 12,550	3800 8,200	*4650 <b>*10,200</b>	3450 7,600	8050 26'4"
0 mm 0 in	kg lb			*10 700 <b>*23,100</b>	7450 16,050	*7800 <b>*16,900</b>	5050 10,850	5750 12,400	3750 8,050	*5200 <b>*11,400</b>	3550 7,750	7860 25'9"
-1500 mm -60 in	kg lb	*11 350 <b>*25,850</b>	*11 350 <b>*25,850</b>	*10 550 <b>*22,800</b>	7450 16,000	*7850 <b>*16,950</b>	5000 10,750			5950 13,100	3850 8,450	7350 24'0"
-3000 mm -120 in	kg lb	*13 200 <b>*28,600</b>	*13 200 <b>*28,600</b>	*9600 <b>*20,700</b>	7500 16,200	*7100 <b>*15,150</b>	5050 10,900			*6350 <b>*13,950</b>	4600 10,250	6460 21'0"
-4500 mm -180 in	kg lb			*7150 <b>*14,950</b>	*7150 <b>*14,950</b>					*6200 <b>*13,550</b>	*6200 <b>*13,550</b>	4970 15'11"



ISO 10567:2007



\* Indicates that the load is limited by hydraulic lifting capacity rather than tipping load. The above loads are in compliance with hydraulic excavator lift capacity standard ISO 10567:2007. They do not exceed 87% of hydraulic lifting capacity or 75% of tipping load. Weight of all lifting accessories must be deducted from the above lifting capacities. Lifting capacities are based on the machine standing on a firm, uniform supporting surface. The use of a work tool attachment point to handle/lift objects, could affect the machine lift performance.

Lift capacity stays with  $\pm 5\%$  for all available track shoes.

Always refer to the appropriate Operation and Maintenance Manual for specific product information.

# 323 GC Hydraulic Excavator Specifications

## Bucket Specifications and Compatibility – Africa, Middle East

	Linkage	Width		Capacity		Weight		Fill	Reach	
		mm	in	m <sup>3</sup>	yd <sup>3</sup>	kg	lb		%	R2.5 (8'2")
<b>Pin On (No Coupler)</b>										
General Duty	B	600	24	0.46	0.61	555	1,223	100	●	●
	B	750	30	0.64	0.84	626	1,380	100	●	●
	B	1200	48	1.19	1.56	812	1,789	100	●	●
	B	1300	51	1.30	1.70	835	1,841	100	●	◎
Heavy Duty	B	1050	42	1.00	1.31	892	1,967	100	●	●
	B	1200	48	1.19	1.56	917	2,022	100	●	●
	B	1300	52	1.30	1.70	974	2,148	100	●	◎
Severe Duty	B	1050	42	1.00	1.31	948	2,091	90	●	●
Severe Duty Spade	B	1200	48	1.20	1.57	1011	2,229	90	●	●
								kg	3679	3392
								lb	8,110	7,478

The above loads are in compliance with hydraulic excavator standard EN474-5:2006 + A3:2013, they do not exceed 87% of hydraulic lifting capacity or 75% of tipping capacity with front linkage fully extended at ground line with bucket curled.

Capacity based on ISO 7451:2007.

Bucket weight with General Duty tips.

### Maximum Material Density:

- 2100 kg/m<sup>3</sup> (3,500 lb/yd<sup>3</sup>)
- ◎ 1800 kg/m<sup>3</sup> (3,000 lb/yd<sup>3</sup>)

Caterpillar recommends using appropriate work tools to maximize the value customers receive from our products. Use of work tools, including buckets, which are outside of Caterpillar's recommendations or specifications for weight, dimensions, flows, pressures, etc. may result in less-than-optimal performance, including but not limited to reductions in production, stability, reliability, and component durability. Improper use of a work tool resulting in sweeping, prying, twisting and/or catching of heavy loads will reduce the life of the boom and stick.



# 323 GC Hydraulic Excavator Specifications

## Bucket Specifications and Compatibility – Southeast Asia

	Linkage	Width		Capacity		Weight		Fill	Reach	
		mm	in	m <sup>3</sup>	yd <sup>3</sup>	kg	lb		%	R2.5 (8'2")
<b>Pin On (No Coupler)</b>										
General Duty	B	1150	46	0.90	1.18	786	1,733	100	●	●
	B	1250	50	1.00	1.31	820	1,808	100	●	●
General Duty Excavation	B	1400	56	1.14	1.49	858	1,891	100	●	●
Heavy Duty	B	1050	43	1.00	1.31	884	1,948	100	●	●
	B	1200	49	1.19	1.56	955	2,105	100	●	●
	B	1350	54	1.38	1.81	1018	2,244	100	⊙	⊙
	B	1050	42	1.00	1.31	901	1,987	100	●	●
Severe Duty	B	1100	43	1.00	1.31	965	2,128	90	●	●
	B	1250	49	1.19	1.56	1063	2,343	90	●	●
								kg	3675	3390
								lb	8,102	7,474
<b>With Pin Grabber Coupler</b>										
General Duty	B	1150	46	0.90	1.18	786	1,733	100	●	●
	B	1250	50	1.00	1.31	820	1,808	100	●	●
General Duty Excavation	B	1400	56	1.14	1.49	858	1,891	100	●	⊙
Heavy Duty	B	1200	49	1.19	1.56	955	2,105	100	⊙	⊖
	B	1050	42	1.00	1.31	901	1,987	100	●	●
Severe Duty	B	1100	43	1.00	1.31	965	2,128	90	●	●
	B	1250	49	1.19	1.56	1063	2,343	90	●	⊙
								kg	3257	2970
								lb	7,180	6,548

The above loads are in compliance with hydraulic excavator standard EN474-5:2006 + A3:2013, they do not exceed 87% of hydraulic lifting capacity or 75% of tipping capacity with front linkage fully extended at ground line with bucket curled.

Capacity based on ISO 7451:2007.

Bucket weight with General Duty tips.

### Maximum Material Density:

- 2100 kg/m<sup>3</sup> (3,500 lb/yd<sup>3</sup>)
- ⊙ 1800 kg/m<sup>3</sup> (3,000 lb/yd<sup>3</sup>)
- ⊖ 1500 kg/m<sup>3</sup> (2,500 lb/yd<sup>3</sup>)

Caterpillar recommends using appropriate work tools to maximize the value customers receive from our products. Use of work tools, including buckets, which are outside of Caterpillar's recommendations or specifications for weight, dimensions, flows, pressures, etc. may result in less-than-optimal performance, including but not limited to reductions in production, stability, reliability, and component durability. Improper use of a work tool resulting in sweeping, prying, twisting and/or catching of heavy loads will reduce the life of the boom and stick.

# 323 GC Hydraulic Excavator Specifications

## Attachments Offering Guide – Africa, Middle East

Not all Attachments are available in all regions. Consult your Cat dealer for configurations available in your region.

Match     
  \* Working range front only     
  † Allowed usage on machine less than 50%     
  No Match

### PIN-ON ATTACHMENTS

Boom Type	Stick Length	Reach	
		2.50 m (8'2")	2.92 m (9'7")
Hydraulic Hammers	H120 GC	✓	✓
	H120 GC S	✓	✓
	H120 S	✓	✓
	H130 GC	✓	
	H130 GC S	✓	
	H130 S	✓	✓†
Multi-Processors	MP318 Concrete Cutter Jaw	✓	✓
	MP318 Demolition Jaw	✓	✓
	MP318 Pulverizer Jaw	✓	✓
	MP318 Shear Jaw	✓	✓
	MP318 Universal Jaw	✓	✓
	MP324 Concrete Cutter Jaw	✓	✓
	MP324 Demolition Jaw	✓	✓
	MP324 Pulverizer Jaw	✓	
	MP324 Shear Jaw	✓	✓
	MP324 Tank Shear Jaw	✓	✓
MP324 Universal Jaw	✓	✓	
Demolition and Sorting Grapples	G317 GC	✓	✓
	G318	✓	✓
	G318 WH-800	✓	✓
	G318 WH-1100	✓	✓
	G324	✓	✓
	G324 WH-1500	✓	✓
	G324 WH-1800	✓*	
Mobile Scrap and Demolition Shears	S3025 Flat Top	✓	✓
Pulverizers	P218 Secondary Pulverizer	✓	✓
	P224 Secondary Pulverizer	✓	
	P318 Primary Pulverizer	✓	✓
	P324 Primary Pulverizer	✓	✓
Compactors (Vibratory Plate)	CVP110	✓	✓

(continued on next page)

# 323 GC Hydraulic Excavator Specifications

## Attachments Offering Guide – Africa, Middle East (continued)

Not all Attachments are available in all regions. Consult your Cat dealer for configurations available in your region.

1800 kg/m<sup>3</sup> (3000 lb/yd<sup>3</sup>)     
  1200 kg/m<sup>3</sup> (2000 lb/yd<sup>3</sup>)     
  900 kg/m<sup>3</sup> (1500 lb/yd<sup>3</sup>)     
  No Match

### PIN-ON ATTACHMENTS (continued)

Boom Type	Stick Length	Reach		
		2.50 m (8'2")	2.92 m (9'7")	
Orange Peel Grapples	GSH420-500	●	●	
	GSH420-600	●	●	
	GSH420-750	●	●	
	GSH425-750	●	●	
	GSH425-950	●	○	
	GSH425-1150	○	○	
	GSH520-500	●	●	
	GSH520-600	●	●	
	GSH520-750	●	●	
	GSH525-750	●	●	
	GSH525-950	○	○	
	GSH525-1150	○		
	GSV420-400	●	●	
	GSV420-500	●	●	
	GSV420-600	●	●	
	GSV420-750	●	●	
	GSV420-1250	◇	◇	
	GSV425-600	●	●	
	GSV425-750	●	●	
	GSV425-950	●	○	
	GSV425-1150	○	○	
	GSV425-1550	◇	◇	
	GSV520-400	●	●	
	GSV520-500	●	●	
	GSV520-600	●	●	
	GSV520-750	●	●	
	GSV525-600	●	●	
	GSV525-750	●	●	
	GSV525-950	○	○	
	GSV525-1150	○		
	Clamshell Grapples	CTV15-1000	●	●
		CTV15-1200	○	○
CTV15-1500		○		

(continued on next page)

# 323 GC Hydraulic Excavator Specifications

## Attachments Offering Guide – Africa, Middle East (continued)

Not all Attachments are available in all regions. Consult your Cat dealer for configurations available in your region.

Match     
  \* Working range front only     
  † Allowed usage on machine less than 50%     
  No Match

### CAT PIN GRABBER COUPLER ATTACHMENTS

Boom Type	Stick Length	Reach	
		2.50 m (8'2")	2.92 m (9'7")
Hydraulic Hammers	H120 GC	✓†	✓†
	H120 GC S	✓†	✓†
	H120 S	✓†	✓†
	H130 GC	✓†	✓†
	H130 GC S	✓†	✓†
	H130 S	✓†	✓†
Multi-Processors	MP318 Concrete Cutter Jaw	✓	✓
	MP318 Demolition Jaw	✓	✓
	MP318 Pulverizer Jaw	✓	✓
	MP318 Shear Jaw	✓	✓
	MP318 Universal Jaw	✓	✓
	MP324 Concrete Cutter Jaw	✓*	
	MP324 Demolition Jaw	✓*	
	MP324 Shear Jaw	✓*	
Demolition and Sorting Grapples	G317 GC	✓	✓
	G318	✓	✓
	G318 WH-800	✓	✓
	G318 WH-1100	✓	✓
	G324	✓*	
Mobile Scrap and Demolition Shears	S3025 Flat Top	✓	✓
Pulverizers	P218 Secondary Pulverizer	✓	✓
	P318 Primary Pulverizer	✓	✓
Compactors (Vibratory Plate)	CVP110	✓	✓

(continued on next page)

# 323 GC Hydraulic Excavator Specifications

## Attachments Offering Guide – Africa, Middle East (continued)

Not all Attachments are available in all regions. Consult your Cat dealer for configurations available in your region.

Match
  \* Working range front only
  † Allowed usage on machine less than 50%
  No Match

### CW-40s DEDICATED COUPLER ATTACHMENTS

Boom Type	Stick Length	Reach	
		2.50 m (8'2")	2.92 m (9'7")
Hydraulic Hammers	H120 GC S	✓†	✓†
	H120 S	✓†	✓†
	H130 S	✓†	✓†
Multi-Processors	MP318 Concrete Cutter Jaw	✓	✓
	MP318 Demolition Jaw	✓	✓
	MP318 Pulverizer Jaw	✓	✓
	MP318 Shear Jaw	✓	✓
	MP318 Universal Jaw	✓	✓
	MP324 Concrete Cutter Jaw	✓	
	MP324 Demolition Jaw	✓	
	MP324 Pulverizer Jaw	✓*	
	MP324 Shear Jaw	✓	✓
	MP324 Tank Shear Jaw	✓*	
	MP324 Universal Jaw	✓	
Demolition and Sorting Grapples	G317 GC	✓	✓
	G318	✓	✓
	G318 WH-800	✓	✓
	G318 WH-1100	✓	✓
	G324	✓	
	G324 WH-1500	✓*	
Mobile Scrap and Demolition Shears	S3025 Flat Top	✓	✓
Pulverizers	P218 Secondary Pulverizer	✓	✓
	P224 Secondary Pulverizer	✓*	
	P318 Primary Pulverizer	✓	✓
	P324 Primary Pulverizer	✓*	
Compactors (Vibratory Plate)	CVP110	✓	✓

(continued on next page)

# 323 GC Hydraulic Excavator Specifications

## Attachments Offering Guide – Africa, Middle East (continued)

Not all Attachments are available in all regions. Consult your Cat dealer for configurations available in your region.

Match     
  \* Working range front only     
  † Allowed usage on machine less than 50%     
  No Match

### CW-40 DEDICATED COUPLER ATTACHMENTS

Boom Type	Stick Length	Reach	
		2.50 m (8'2")	2.92 m (9'7")
Hydraulic Hammers	H120 GC	✓†	✓†
	H120 GC S	✓†	✓†
	H120 S	✓†	✓†
	H130 GC	✓†	✓†
	H130 GC S	✓†	✓†
	H130 S	✓†	✓†
Multi-Processors	MP318 Concrete Cutter Jaw	✓	✓
	MP318 Demolition Jaw	✓	✓
	MP318 Pulverizer Jaw	✓	✓
	MP318 Shear Jaw	✓	✓
	MP318 Universal Jaw	✓	✓
	MP324 Concrete Cutter Jaw	✓	
	MP324 Demolition Jaw	✓	
	MP324 Pulverizer Jaw	✓*	
	MP324 Shear Jaw	✓	✓
	MP324 Tank Shear Jaw	✓	
MP324 Universal Jaw	✓		
Demolition and Sorting Grapples	G317 GC	✓	✓
	G317 GC fixed CAN	✓	✓
	G318	✓	✓
	G318 fixed CAN	✓	✓
	G318 WH-800	✓	✓
	G318 WH-1100	✓	✓
	G324	✓	
	G324 WH-1500	✓*	
Mobile Scrap and Demolition Shears	S3025 Flat Top	✓	✓
Pulverizers	P218 Secondary Pulverizer	✓	✓
	P224 Secondary Pulverizer	✓*	
	P318 Primary Pulverizer	✓	✓
	P324 Primary Pulverizer	✓*	
Compactors (Vibratory Plate)	CVP110	✓	✓

### BOOM-MOUNT ATTACHMENTS

Boom Type	Reach	
Mobile Scrap and Demolition Shears	S2050	✓
	S3035 Flat Top	✓

# 323 GC Hydraulic Excavator Specifications

## Attachments Offering Guide – Southeast Asia

Not all Attachments are available in all regions. Consult your Cat dealer for configurations available in your region.

Match

† Allowed usage on machine less than 50%

### PIN-ON ATTACHMENTS

Boom Type		Reach
Stick Length		R2.9 (9'8")
Hydraulic Hammers	H120 GC	✓
	H120 GC S	✓
	H120 S	✓
	H130 S	✓†
Compactors (Vibratory Plate)	CVP110	✓

# 323 GC Standard and Optional Equipment

## Standard and Optional Equipment

Standard and optional equipment may vary. Consult your Cat dealer for details.

	Standard	Optional		Standard	Optional
<b>CAB</b>			<b>ENGINE</b>		
ROPS, standard sound suppression	✓		Cat® C7.1 single turbo diesel engine	✓	
High-resolution 203 mm (8") LCD touchscreen monitor	✓		Two selectable modes	✓	
Auto bi-level air conditioner	✓		Auto engine speed control	✓	
Keyless push-to-start engine control	✓		Auto engine idle shutdown	✓	
Height-adjustable console	✓		4500 m (14,760 ft) altitude capability with engine power derate above 3000 m (9,840 ft)	✓	
Fixed left-side console	✓		52° C (125° F) high-ambient cooling capacity with derate	✓	
Mechanical-suspension seat	✓		-18° C (0° F) cold start capability	✓	
51 mm (2") seat belt	✓		-32° C (-25° F) cold start capability		✓
Console mounted radio (with Bluetooth® pairing and USB port)	✓		Sealed double element air filter with integrated pre-cleaner	✓	
24V DC outlet	✓		2 × 115 amp dual alternator	✓	
Console storage	✓		Electric fuel priming pump	✓	
Cup and bottle holders	✓		Two-stage fuel filtration system with water separator and indicator	✓	
Openable two-piece front window	✓		Electric cooling fans with auto-reverse function	✓	
Rear window emergency exit	✓		<b>HYDRAULIC SYSTEM</b>		
Upper radial wiper with washer	✓		Electronic main control valve – 1 way high pressure auxiliary circuit ready	✓	
Openable steel skylight hatch	✓		Tandem type electronic main pump	✓	
LED dome light	✓		Boom and stick regeneration circuits	✓	
Roller front sunscreen	✓		Auto warm up	✓	
Roller rear sunscreen		✓	Auto two-speed travel	✓	
Washable floor mat	✓		Boom and stick drift reduction valve	✓	
Beacon ready	✓		Combined flow/high-pressure auxiliary circuit		✓
Cat Stick Steer		✓	Element type main hydraulic filter	✓	
<b>CAT TECHNOLOGY</b>			Boom and stick hydraulic hammer lines		✓
Cat Product Link™	✓				
Remote Flash <sup>(1)</sup>	✓				
Remote Troubleshoot <sup>(1)</sup>	✓				
Auto hammer stop	✓				

<sup>(1)</sup>Optional for Kingdom of Saudi Arabia.

(continued on next page)



## Standard and Optional Equipment *(continued)*

Standard and optional equipment may vary. Consult your Cat dealer for details.

	Standard	Optional		Standard	Optional
<b>UNDERCARRIAGE AND STRUCTURES</b>			<b>SERVICE AND MAINTENANCE</b>		
Two-piece segmented track guiding guards	✓		Side entry to service platform	✓	
Bottom guards	✓		Grouped location of engine oil and fuel filters	✓	
Swivel guard		✓	Scheduled Oil Sampling (S-O-S <sup>SM</sup> ) ports	✓	
Travel motor guards	✓		Ground-level and platform-level engine oil dipsticks	✓	
Grease lubricated track	✓		Integrated vehicle health management system		✓
4.7 mt (10,360 lb) counterweight	✓		<b>SAFETY AND SECURITY</b>		
600 mm (24") triple grouser track shoes		✓	Rearview camera and right-hand side mirror <sup>(3)</sup>	✓	
790 mm (31") triple grouser shoes		✓	Right-hand-sideview camera		✓
Tie-down points on base frame	✓		Ground-level engine shutoff switch	✓	
<b>BOOM, STICKS AND LINKAGES</b>			Right-hand handrail and handhold	✓	
5.7 m (18'8") Reach boom	✓		Signaling/warning horn	✓	
2.9 m (9'6") Semi-HD Reach stick, B1 linkage	✓		Swing alarm		✓
2.9 m (9'6") Semi-HD Reach bare stick, B1 linkage		✓	Service platform with anti-skid plate and countersunk bolts	✓	
2.5 m (8'2") Semi-HD Reach stick <sup>(2)</sup>		✓	Hydraulic lock out lever neutralizes all controls	✓	
2.5 m (8'2") Semi-HD Reach bare stick <sup>(2)</sup>		✓	Lockout device for disconnect switch <sup>(3)</sup>		✓
Bucket linkage, B1 family with lifting eye <sup>(3)</sup>	✓				
<b>ELECTRICAL SYSTEM</b>					
Two 1,000 CCA maintenance-free batteries	✓				
Programmable time-delay LED working lights	✓				
LED chassis light, left-hand boom light, cab light – 1800 lumens	✓				
Centralized electrical disconnect switch	✓				

<sup>(2)</sup>Africa, Middle East only.

<sup>(3)</sup>Mandatory for Kingdom of Saudi Arabia.

# 323 GC Dealer Installed Kits and Attachments

## Dealer Installed Kits and Attachments

Attachments may vary. Consult your Cat dealer for details.

### **CAB**

- Lower wiper
- Polycarbonate roof hatch

### **SAFETY AND SECURITY**

- Falling object guard system
- Mesh guard full front
- Mesh guard lower half front
- Cab vandalism guard

### **SERVICE AND MAINTENANCE**

- Grease gun holder

For more complete information on Cat products, dealer services, and industry solutions, visit us on the web at [www.cat.com](http://www.cat.com)

© 2022 Caterpillar  
All rights reserved

Materials and specifications are subject to change without notice. Featured machines in photos may include additional equipment. See your Cat dealer for available options.

CAT, CATERPILLAR, LET'S DO THE WORK, their respective logos, "Caterpillar Corporate Yellow", the "Power Edge" and Cat "Modern Hex" trade dress as well as corporate and product identity used herein, are trademarks of Caterpillar and may not be used without permission.

AEXQ3032-02 (09-2022)  
Replaces AEXQ3032-01  
Build Number: 07F  
(Afr-ME, SE Asia)

