

# D9 GC

DOZER



---

**Operating Weight**

**Net Power**

Meets US EPA Tier 1 Equivalent

49 441 kg / 108,999 lb

308 kW / 412 hp



The productive and familiar D9 GC gives you performance and reliability in a simple, economical dozer. It's easy to operate, simple to repair, and built with all Cat® components that work together to deliver top performance and high availability.

# CAT® D9 GC

EASY TO OPERATE. EASY TO OWN.



## VERSATILE, DURABLE AND FAMILIAR

The D9 GC builds on the success of the versatile and durable D9R, which has been hard at work around the world for 25 years. The D9 GC's major components, parts and systems will look familiar to those who have owned, operated and maintained the D9R.

- + UNMATCHED RELIABILITY
- + LONG LIFE THROUGH A PROVEN DESIGN
- + APPLICATION-SPECIFIC CONFIGURATIONS AND ATTACHMENTS



---

## SIMPLE

- + Comfortable cab with easy-to-operate controls
- + Easy to diagnose, maintain and repair — even in remote locations
- + Solid dozing performance

---

## ECONOMICAL

- + Cost-effective to own and operate
- + Competitive performance and fuel efficiency

---

**MODULAR DESIGN** optimizes performance and simplifies service



---

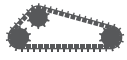


---

**SIMPLE** EASY TO OPERATE.  
EASY TO SERVICE.  
EASY TO REPAIR.

---

**CAT D9 GC**



## SMOOTH RIDE

The elevated sprocket and suspended undercarriage work together, increasing traction and giving the operator a smooth ride in all conditions. The elevated sprocket design transfers implement shock loads to the frame, so final drives are isolated from harsh impacts. The result is higher productivity and longer component life, no matter the application.



## LONG-TERM POWER

Cat three-speed planetary powershift transmission and well-known torque divider with free wheel stator put more power to the ground under light load and improve fuel consumption.



## BLADE OPTIONS

The D9 GC can be equipped with a variety of blades for specific applications, including coal, reclamation and cushion blades.



# THE RIGHT DOZER FOR YOUR APPLICATION

The D9 GC is a versatile machine designed to be used in a variety of applications, such as ripping overburden, production dozing, stockpiling, winching, site maintenance, fleet support and reclamation. Special arrangements are available for arctic, desert, heavy construction and steel mill applications.



# PRODUCTIVE DOZING BEGINS WITH A PRODUCTIVE OPERATOR

---

## CLEAR LINE OF SIGHT

The operator station offers an exceptional viewing area, with a tapered hood and notched fuel tank to give the operator a clear line of sight to front and rear work areas. The low rear window lets the operator see the ripper tip, and single-pane door windows allow clear sight to each side without leaning.

---

## SIMPLE STEERING

The D9 GC features hand levers with combined steering clutch and brake control for each track.



---

## DESIGNED FOR COMFORT

The Cat Comfort Series Seat is fully adjustable and designed for comfort and support, with thick seat and back cushions to reduce pressure on the back and thighs while allowing unrestricted arm and leg movement.

---

## EQUIPPED ENVIRONMENT

The cab offers intermittent windshield wipers, 12-volt power outlet, first-aid kit storage, inside door releases, lunch box tie-down, cup holder, console pads, standard 24- to 12-volt converter, speakers and antenna.

---

## NEW SAFETY OPTIONS

The D9 GC can be equipped from the factory with optional flashing orange beacon and LED lighting for added safety.



# REDUCE YOUR DOWNTIME

## REDUCE YOUR COSTS

The D9 GC is designed to be easy to service and maintain — so your machines spend less time in the maintenance shop and more time on the job. Major components are modular, so they can be removed without disturbing or removing others.

- + Fewer greasing points
- + Large, quick-access cover to radiator for improved cleaning
- + High-efficiency aluminum bar plate radiator
- + Sealed electrical connectors, which lock out dust and moisture for improved electrical system reliability and servicing
- + Final drives with integral fluid reservoirs that are separate from the transmission, allowing the use of lubricants optimized for each compartment to ensure the best performance and longest component life

### TIME-SAVERS

---

- + Spin-on fuel and engine oil filters
- + Fast fuel and quick oil change attachments
- + Optional lines and nozzles for high-speed engine and powertrain oil changes
- + Optional large side swing-out door to radiator with tool-less entry for cleaning

### CAPTURED FLUIDS

---

Ecology drains use a valve rather than a plug to provide an environmentally safe and effective method to drain fluids. These drains can be found in the radiator, hydraulic tank and major powertrain components where fluids are commonly changed. They're located so that fluids can be easily captured in an appropriate container for recycling or proper disposal.

### UPDATED ENGINE & COOLING SYSTEM

---

The powerful Cat 3408C engine meets Tier 1 emissions with an air-to-air aftercooler. It offers longer fuel filter and air cleaner life, a new robust self-tensioner and a single UHE oil filter. The standard high-efficiency aluminum radiator with hydraulic fan in a sucker position reduces impact damage from debris.

### EASIER DIAGNOSIS

---

Many years of customer experience have shown that simple design enables easy maintenance and straightforward diagnosis of repairs.

### SAFE, EASY ACCESS

---

We've improved bottom guard removal with a new retention plate on each hinged guard and included a secondary retention plate on bottom guards. Greasing points on the lift cylinders have been removed. We've also provided safe, easy access to the windshield washer fluid bottle and fuel fill; provided a push-arm grab handle; and incorporated visible coolant sight glass.



## DOZERS THAT ARE MADE TO GO THE DISTANCE

The durability and reliability of Cat dozers are unmatched in the industry. It's not unusual for a Cat dozer to log more than 100,000 hours.

---

### STRONG BACKBONE

The backbone of the D9 GC — the frame and radiator guard — are the same as those found on the new D9 Dozer. The heavy, strong and durable frame features high-strength steel castings and continuously rolled top and bottom frame rails. Frames provide durable support to the undercarriage, elevated final drives and other components. The mainframe is built to absorb high-impact shock loads and twisting forces encountered during severe dozing and ripping applications. Full box-section frame rails and designed to keep components rigidly aligned.

### ELEVATED & PROTECTED

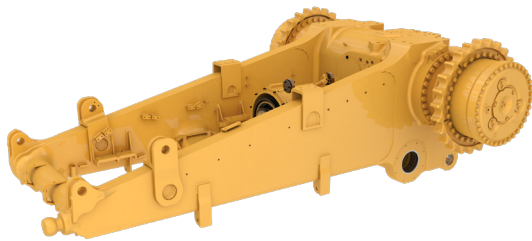
The main case elevates the final drives well above the ground-level work area to protect them from impact loads, abrasion and contaminants.

### LONGER COMPONENT LIFE

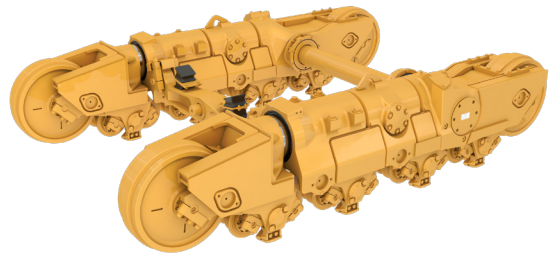
Proper grease lubrication on working surfaces can significantly extend component life and help lower maintenance costs. Remote lubrication is performed from a service point conveniently located on the left-hand side of the engine compartment and allows an operator or service technician to lubricate both the left and right equalizer bar pin bearings and pins from one service point.

### DOZE. REBUILD. REPEAT.

The D9 GC frame, powertrain and major components are built to be rebuilt — using new, remanufactured or rebuilt parts and components — so you can take advantage of a cost-effective second life of like-new performance at a fraction-of-new price.



Frame



Tubular roller frame



# SUPPORT

## BEYOND THE IRON

### SERVICE AND SUPPORT

---

No one knows more about how to get the most from your Cat equipment than your local Cat dealer. This one-of-a-kind, on-the-ground support network delivers expert service, flexible solutions, after-sales support, fast and efficient parts fulfillment, world-class rebuild and remanufacturing capabilities, and more.

We're committed to ensuring you achieve maximum value throughout the life of your equipment. Together with our dealers, we customize service offerings to provide a maintenance solution that fits your operation—whether you want to perform the majority of service yourself, or you're looking for an onsite partner to manage your maintenance organization. We're also consultants who can help you make smart decisions about buying, operating, maintaining, repairing, rebuilding and replacing equipment.

### PRODUCT LINK™/VISIONLINK®

---

Product Link (optional) is deeply integrated into your D9 GC, helping you take the guesswork out of equipment management. Product Link transmits basic health, machine location and utilization data for remote machine monitoring via the online VisionLink user interface, which can help you effectively manage your fleet and lower operating costs. Cellular and satellite versions are offered to provide connectivity in remote locations.

### CAT APP

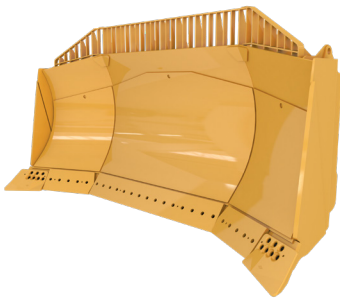
---

The Cat App helps you manage your assets— at any time— right from your smartphone. See fleet location and hours, get critical required maintenance alerts and even request service from your local Cat dealer.



# CAT BLADES THE PERFECT MATCH FOR CAT DOZERS

Decades of dozer research and development have made Caterpillar the leader in blade technology. Cat blades are designed for loadability and constructed of high-tensile-strength materials to produce big numbers over a long life.



## BLADE OPTIONS for the D9 GC

- + Universal (U)
- + Semi-Universal (SU)
- + Reclamation
- + Coal
- + Cushion

## SPECIALTY ATTACHMENTS



Single-Shank Ripper

## REAR ATTACHMENTS

- + Single-Shank Ripper
- + Multi-Shank Ripper
- + Counterweight
- + Winch

## CapSure™ Hammerless Ripper Tip and Shank Protector Retention System

The tip and shank protector are easily installed with a 180-degree turn of a 3/4-inch ratchet. This simple installation means no hammering and therefore improved safety. It also means quicker change-outs and less downtime.

**3** PITCH POSITION OPTIONS + **5%** MORE MATERIAL MOVED

## DUAL TILT ADVANTAGE

The Dual Tilt option delivers a significant boost to productivity by allowing the operator to optimize blade pitch angle, improving load control and making it possible to carry material instead of only pushing it. In a direct comparison between two dozers, a D9 GC Dozer with Dual Tilt moved 5% more material than the one without.

TILT FORWARD    TILT BACK    TILT FORWARD  
**CUT » CARRY » DUMP**

# TECHNICAL SPECIFICATIONS

See cat.com for complete specifications.

ENGINE – TIER 1 EQUIVALENT			
Engine Model	Cat 3408C		
Bore	137 mm	5.4 in	
Stroke	152 mm	6.0 in	
Displacement	18.0 L	1,099 in <sup>3</sup>	
Engine Power			
Gross SAE J1995*	330 kW	443 hp	
ISO 14396*	326 kW	437 hp	
Net SAE J1349/ISO9249	308 kW	412 hp	
Emissions	U.S. EPA Tier 1 equivalent		
	<ul style="list-style-type: none"> <li>• All engine ratings apply at 1,900 rpm.</li> <li>• No derating required up to 2250 m (7,381 ft) altitude.</li> </ul>		
	*Excludes all fan losses.		

FLUID CAPACITIES		
Fuel Tank (Splash Fill)	963 L	254 gal
Fuel Tank (Fast Fill)	939 L	248 gal
Cooling System	99.8 L	26 gal
Engine Crankcase*	48 L	13 gal
Powertrain	150 L	40 gal
Final Drives (each)	15 L	4 gal
Roller Frames (each)	45 L	12 gal
Pivot Shaft Compartment	30 L	8 gal
Hydraulic System Tank	89 L	24 gal
	*with oil filters	

WEIGHTS		
Operating Weight	49 441 kg	108,999 lb
Shipping Weight	37 724 kg	83,167 lb
	<ul style="list-style-type: none"> <li>• D9 GC Operation Weight includes hydraulic controls, blade tilt cylinder, coolant, lubricants, full fuel tank, ROPS, FOPS cab, SU Blade, Single-Shank Ripper, 610 mm (24 in) ES shoes and operator.</li> <li>• D9 GC Operation Weight includes base machine chassis with cab, pivot shaft, roller frames, track and ROPS.</li> </ul>	

TRANSMISSION		
1.0 Forward	3.9 km/h	2.4 mph
2.0 Forward	6.8 km/h	4.2 mph
3.0 Forward	11.9 km/h	7.4 mph
1.0 Reverse	4.7 km/h	2.9 mph
2.0 Reverse	8.4 km/h	5.2 mph
3.0 Reverse	14.7 km/h	9.1 mph
Type	Planetary powershift	

BLADE	SEMI-UNIVERSAL	UNIVERSAL
Blade Capacity (SAE J1265)	13.6 m <sup>3</sup>   17.8 yd <sup>3</sup>	16.6 m <sup>3</sup>   21.7 yd <sup>3</sup>
Blade Width (over end bits)	4376 mm   172.3 in	4648 mm   183.0 in
Blade Height	1934 mm   76.1 in	1934 mm   76.1 in
Maximum Digging Depth	606 mm   23.9 in	606 mm   23.9 in
Ground Clearance at Full Lift	1422 mm   56.0 in	1422 mm   56 in
Maximum Tilt	940 mm   37.0 in	1014 mm   39.9 in
Blade Weight	4802 kg   10,587 lb	5327 kg   11,744 lb

DIMENSIONS	D9 GC
Ground Clearance*	459 mm   18.1 in
Track Gauge	2250 mm   88.6 in
Width without Trunnions (standard shoe)	2870 mm   113.0 in
Height (ROPS cab)*	4000 mm   157.5 in
Length of Track on Ground	3470 mm   136.6 in
Overall Length – Basic Dozer	4910 mm   193.3 in
Overall Length with SU Blade and SS Ripper	8219 mm   323.6 in
	*Includes grouser height for total dimensions on hard surfaces.

# STANDARD & OPTIONAL EQUIPMENT

Standard and optional equipment may vary. Consult your Cat dealer for details.

OPERATOR EQUIPMENT	STANDARD	OPTIONAL
ROPS/ FOPS, Sound-Suppressed Cab	•	
ROPS/FOPS, Canopy Only		•
Air Conditioner and Heater	•	
Air Conditioner – Fender-Mounted Condenser		•
Heater Only		•
Seat – Cloth with Mechanical Suspension	•	
Seat – Vinyl with Mechanical Suspension		•
Seat – Cloth with Air Suspension		•
Rear Window Screen		•
Cab Glass – Single-Pane with Slider Window	•	
Cab Glass – Dual-Pane Laminated		•
Cab – Steel Mill – Single-Pane Glass with Defroster Fans		•
MAINTENANCE AND SERVICE	STANDARD	OPTIONAL
Ecology Fluid Drains – All Compartments	•	
Hinged Bottom Guards	•	
High-Speed Oil Change – Engine and Transmission		•
Ground-Level Fast Fuel Fill		•
S-O-S <sup>SM</sup> Fluid Sampling Ports	•	
CapSure™ Hammerless Ripper Tip and Shank Protectors	•	
Anchorage Points (2)	•	
Hinged Quick-Access Door on Radiator Guard		•
CAT POWERTRAIN	STANDARD	OPTIONAL
Cat 3408C Engine – U.S. EPA Tier 1 Equivalent	•	
Radiator – High-Performance Aluminum Bar Plate	•	
Radiator Core Protector Grid		•
Powershift Transmission – Three-Speed	•	
Precleaner – Turbine		•
Hydraulic Engine Cooling Fan – Push-Button Reversing		•
Final Drives, Three-Planet Double Reduction Planetary	•	
Final Drive Seal – Guarded		•
Final Drive Seal – Steel Mill		•
Final Drive Seal – Cold Weather		•

UNDERCARRIAGE	STANDARD	OPTIONAL
Undercarriage Arrangement – Abrasion		•
Undercarriage Arrangement – Cold Weather		•
Undercarriage Arrangement – Steel Mill		•
Rubber Idler Guards		•
Suspension-Type Undercarriage	•	
Equalizer Bar – Greased End Pin Bearings	•	
Track Links – Heavy-Duty XL – Duralink™		•
Track Shoe – Anti-Packing Round Hole		•
Carrier Roller		•
Carrier Roller – Cold Weather		•
ELECTRICAL	STANDARD	OPTIONAL
Alternator – 65-Amp	•	
Alternator – 95-Amp		•
Batteries – 2x4, 200-Amp Hour, 12V	•	
Battery Isolation	•	
Lights – Halogen – 6 Positions	•	
Lights – Halogen – 10 Positions		•
Lights – LED – 10 Positions		•
Lights – Warning Strobe		•
Product Link™, Cellular		•
Product Link, Dual Mode (Cellular + Satellite)		•
HYDRAULICS	STANDARD	OPTIONAL
Load-Sensing Dozer Lift and Tilt	•	
Dozer Blade – Dual Tilt		•
Load-Sensing Ripper Lift and Pitch	•	
Ripper Pin Puller		•
REAR ATTACHMENTS	STANDARD	OPTIONAL
Ripper – Single-Shank		•
Ripper – Single-Shank Deep		•
Ripper – Multi-Shank (three)		•
Ripper – Multi-Shank (steel mill)		•
Counterweight		•
Winch		•
Drawbar		•
SPECIAL ARRANGEMENTS	STANDARD	OPTIONAL
Desert		•
Steel Mill		•
Arctic		•



# D9GC DOZER

For more complete information on Cat products, dealer services and industry solutions, visit us at [www.cat.com](http://www.cat.com)

Materials and specifications are subject to change without notice. Featured machines in photos may include additional equipment. See your Cat dealer for available options.

© 2020 Caterpillar. All Rights Reserved. CAT, CATERPILLAR, LET'S DO THE WORK, their respective logos, "Caterpillar Yellow", the "Power Edge" and Cat "Modern Hex" trade dress as well as corporate and product identity used herein, are trademarks of Caterpillar and may not be used without permission.

AEHQ8357  
Build Number: 03B

