



350

Hydraulic Excavator

Technical Specifications

Configurations and features may vary by region. Please consult your Cat® dealer for availability in your area.

Table of Contents

Specifications	2
Engine	2
Swing Mechanism	2
Weights	2
Track	2
Drive	2
Hydraulic System	2
Service Refill Capacities	2
Standards	2
Air Conditioning System	2
Operating Weights and Ground Pressures	3
Major Component Weights	3
Dimensions	4
Working Ranges and Forces	6
Bucket Specifications and Compatibility	7
Typical Pass Match Guide	8
Attachments Offering Guide	8
Standard and Optional Equipment	9
Dealer Installed Kits and Attachments	11
350 Environmental Declaration	12

350 Hydraulic Excavator Specifications

Engine

Engine Model	Cat® C9.3B	
Net Power – ISO 9249	308 kW	413 hp
Engine Power – ISO 14396	309 kW	414 hp
Bore	115 mm	5 in
Stroke	149 mm	6 in
Displacement	9.3 L	568 in ³

- Meets China Nonroad Stage IV emission standards.
- Recommended for use up to 4500 m (14,770 ft) altitude with engine power derate above 3000 m (9,840 ft).
- Net power is the power available at the flywheel when the engine is equipped with fan, air intake system, exhaust system, and alternator with engine speed at 1,800 rpm.
- Cat engines are compatible with diesel fuel blended with the following lower-carbon intensity fuels up to:
 - ✓ 100% biodiesel FAME (fatty acid methyl ester)*
 - ✓ 100% renewable diesel, HVO (hydrogenated vegetable oil) and GTL (gas-to-liquid) fuels

Refer to guidelines for successful application. Please consult your Cat dealer or “Caterpillar Machine Fluids Recommendations” (SEBU6250) for details.

**For use of blends higher than 20% biodiesel, consult your Cat dealer.*

Swing Mechanism

Swing Speed	7.94 rpm	
Maximum Swing Torque	189 kN·m	139,275 lbf-ft

Weights

Operating Weight	47 600 kg	105,000 lb
------------------	-----------	------------

- Long undercarriage, Mass boom, M3.0UB (9'10") stick, SD 3.2 m³ (4.20 yd³) bucket, 600 mm (24") double grouser shoes and 9000 kg (19,840 lb) counterweight.

Track

Standard Track Shoes Width	600 mm	24 in
Optional Track Shoes Width	750 mm	30 in
Number of Shoes (each side)	52	
Number of Track Rollers (each side)	9	
Number of Carrier Rollers (each side)	2	

Drive

Gradeability	35°/70%	
Maximum Travel Speed	4.5 km/h	2.8 mph
Maximum Drawbar Pull	352 kN	79,200 lbf

Hydraulic System

Main System – Maximum Flow – Implement	779 L/min (389 × 2 pumps)	206 gal/min (103 × 2 pumps)
Maximum Pressure – Equipment – Implement	35 000 kPa	5,076 psi
Maximum Pressure – Travel	35 000 kPa	5,076 psi
Maximum Pressure – Swing	25 700 kPa	3,727 psi
Boom Cylinder – Bore	160 mm	6 in
Boom Cylinder – Stroke	1575 mm	62 in
Stick Cylinder – Bore	190 mm	7 in
Stick Cylinder – Stroke	1758 mm	69 in
TB Bucket Cylinder – Bore	160 mm	6 in
TB Bucket Cylinder – Stroke	1356 mm	53 in
UB Bucket Cylinder – Bore	170 mm	7 in
UB Bucket Cylinder – Stroke	1396 mm	55 in

Service Refill Capacities

Fuel Tank Capacity	680 L	180 gal
Cooling System	48 L	13 gal
Engine Oil (with filter)	32 L	8 gal
Swing Drive	15 L	4.0 gal
Final Drive (each)	11 L	2.9 gal
Hydraulic System (including tank)	550 L	145 gal
Hydraulic Tank (including suction pipe)	217 L	57 gal
Diesel Exhaust Fluid (DEF) Tank	80 L	21.1 gal

Standards

Brakes	ISO 10265:2008
Cab/Falling Object Guard System (FOGS)	ISO 10262:1998 Level II

Air Conditioning System

The air conditioning system on this machine contains the fluorinated greenhouse gas refrigerant R134a (Global Warming Potential = 1430). The system contains 1.00 kg of refrigerant which has a CO₂ equivalent 1.430 metric tonne.

350 Hydraulic Excavator Specifications

Operating Weights and Ground Pressures

Base Machine Configurations	600 mm (24") Double Grouser Track Shoes		600 mm (24") HD Double Grouser Track Shoes		750 mm (30") Double Grouser Track Shoes		750 mm (30") Triple Grouser Track Shoes	
	Weight kg (lb)	Ground Pressure kPa (psi)	Weight kg (lb)	Ground Pressure kPa (psi)	Weight kg (lb)	Ground Pressure kPa (psi)	Weight kg (lb)	Ground Pressure kPa (psi)
Base Frame with Track Rollers and Carrier Rollers								
9000 kg (19,840 lb) Counterweight + Long Undercarriage Base Machine								
Mass Boom + M2.5UB (8'2") Stick + 3.2 m ³ (4.20 yd ³) SD bucket	47 400 (104,500)	82.5 (11.9)	48 000 (105,900)	83.1 (12.1)	48 200 (106,300)	66.9 (9.7)	48 100 (106,000)	66.7 (9.7)
Mass Boom + M3.0UB (9'10") Stick + 3.2 m ³ (4.20 yd ³) SD bucket	47 600 (105,000)	82.5 (12)	48 200 (106,400)	83.5 (12.1)	48 400 (106,800)	67.2 (9.7)	48 300 (106,400)	67 (9.7)
Reach Boom + R2.9TB (9'6") Stick + 2.7 m ³ (3.60 yd ³) SD bucket	46 700 (103,000)	80.9 (11.7)	47 300 (104,300)	81.9 (11.9)	47 500 (104,700)	65.9 (9.6)	47 400 (104,400)	65.7 (9.5)
Reach Boom + R3.35TB (11'0") Stick + 2.7 m ³ (3.60 yd ³) SD bucket	47 000 (103,500)	81.3 (11.8)	47 600 (104,900)	82.3 (11.9)	47 700 (105,300)	66.3 (9.6)	47 600 (104,900)	66.1 (9.6)

All operating weights include a 90% fuel tank with 75 kg (165 lb) operator.

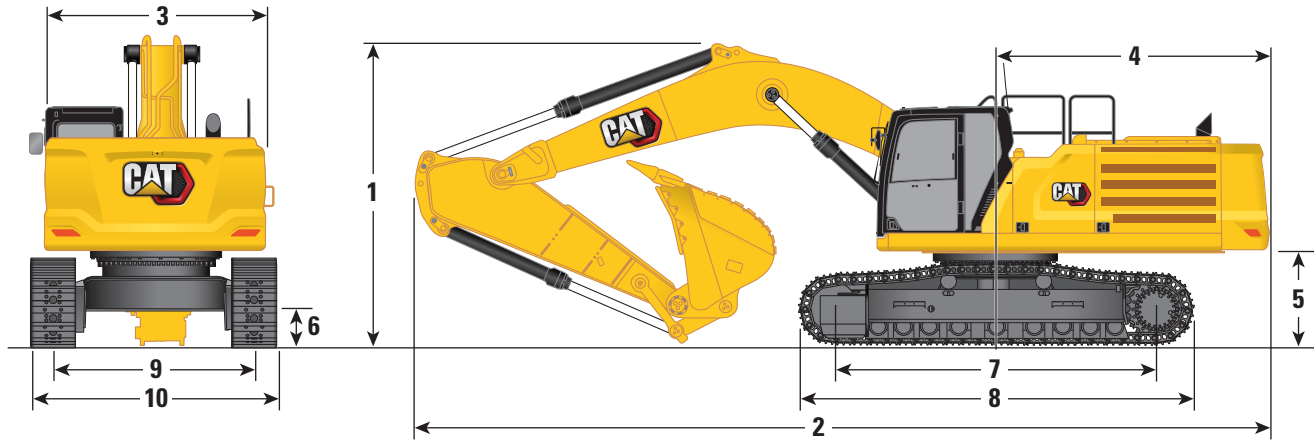
Major Component Weights

	kg	lb
Base Machine Weight: including upper frame, undercarriage, counterweight, boom cylinders, without boom, stick, bucket, stick cylinder, bucket cylinder, tracks, fuel, operator		
With 9000 kg (19,840 lb) Counterweight, Swing Frame, Base Frame with Track Rollers and Carrier Rollers	31 050	68,460
Track Shoes:		
600 mm (24") Double Grouser Track Shoes	5270	11,610
600 mm (24") HD Double Grouser Track Shoes	5890	12,970
750 mm (30") Double Grouser Track Shoes	6060	13,360
750 mm (30") Triple Grouser Track Shoes	5910	13,030
Two Boom Cylinders	760	1,680
Weight of 90% Fuel Tank and 75 kg (165 lb) Operator	630	1,380
Counterweight:		
9000 kg (19,840 lb) Counterweight	9000	19,840
Swing Frame	4140	9,120
Long Undercarriage:		
Base Frame with Track Rollers and Carrier Rollers	10 820	23,860
Booms (including lines, pins, stick cylinder):		
Mass Boom 6.55 m (21'6")	4850	10,700
Reach Boom 6.9 m (22'8")	4560	10,050
Sticks (including lines, pins, bucket cylinder, bucket linkage):		
Mass Stick M2.5UB (8'2")	2650	5,850
Reach Stick R2.9TB (9'6")	2370	5,220
Mass Stick M3.0UB (9'10")	2870	6,340
Reach Stick R3.35TB (11'0")	2600	5,740
Buckets (without linkage):		
2.7 m ³ (3.60 yd ³) SD	2850	6,270
3.2 m ³ (4.20 yd ³) SD	2970	6,540

350 Hydraulic Excavator Specifications

Dimensions

All dimensions are approximate and may vary depending on bucket selection.



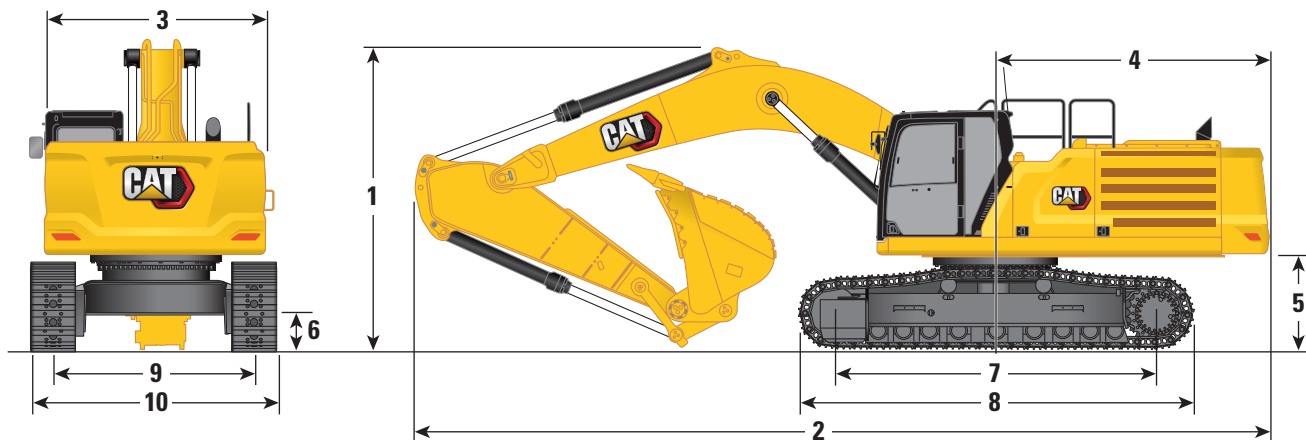
Boom Options	Mass Boom 6.55 m (21'6")				Reach Boom 6.9 m (22'8")				
	Mass Stick		Reach Stick		Mass Stick		Reach Stick		
Stick Options	M2.5UB (8'2")		M3.0UB (9'10")		R2.9TB (9'6")		R3.35TB (11'0")		
1 Machine Height:									
Cab Height	3260 mm	10'8"	3260 mm	10'8"	3260 mm	10'8"	3260 mm	10'8"	
FOGS Height	3400 mm	11'2"	3400 mm	11'2"	3400 mm	11'2"	3400 mm	11'2"	
Handrail Height	3400 mm	11'2"	3400 mm	11'2"	3400 mm	11'2"	3400 mm	11'2"	
With Boom/Stick/Bucket Installed	4340 mm	14'3"	4220 mm	13'10"	3890 mm	12'9"	3590 mm	11'9"	
With Boom/Stick Installed	3530 mm	11'7"	3780 mm	12'5"	3440 mm	11'3"	3530 mm	11'7"	
With Boom Installed	3190 mm	10'6"	3190 mm	10'6"	3110 mm	10'2"	3110 mm	10'2"	
With Boom/Stick/Bucket Installed (with auxiliary lines)	4340 mm	14'3"	4220 mm	13'10"	3890 mm	12'9"	3590 mm	11'9"	
With Boom/Stick Installed (with auxiliary lines)	3530 mm	11'7"	3780 mm	12'5"	3440 mm	11'3"	3530 mm	11'7"	
With Boom Installed (with auxiliary lines)	3190 mm	10'6"	3190 mm	10'6"	3110 mm	10'2"	3110 mm	10'2"	
2 Machine Length:									
With Boom/Stick/Bucket Installed	11 830 mm	38'10"	11 630 mm	38'2"	11 890 mm	39'0"	11 880 mm	39'0"	
With Boom/Stick Installed	11 580 mm	38'0"	11 510 mm	37'9"	11 830 mm	38'10"	11 860 mm	38'11"	
With Boom Installed	10 270 mm	33'8"	10 270 mm	33'8"	10 630 mm	34'11"	10 630 mm	34'11"	
With Boom/Stick/Bucket Installed (with auxiliary lines)	11 830 mm	38'10"	11 630 mm	38'2"	11 890 mm	39'0"	11 880 mm	39'0"	
With Boom/Stick Installed (with auxiliary lines)	11 580 mm	38'0"	11 510 mm	37'9"	11 830 mm	38'10"	11 860 mm	38'11"	
With Boom Installed (with auxiliary lines)	10 570 mm	34'8"	10 570 mm	34'8"	10 630 mm	34'11"	10 630 mm	34'11"	
3 Upperframe Width without Walkways	3020 mm	9'11"	3020 mm	9'11"	3020 mm	9'11"	3020 mm	9'11"	
4 Tail Swing Radius	3760 mm	12'4"	3760 mm	12'4"	3760 mm	12'4"	3760 mm	12'4"	
5 Counterweight Clearance	1340 mm	4'5"	1340 mm	4'5"	1340 mm	4'5"	1340 mm	4'5"	
6 Ground Clearance	520 mm	1'8"	520 mm	1'8"	520 mm	1'8"	520 mm	1'8"	

(continued on next page)

350 Hydraulic Excavator Specifications

Dimensions *(continued)*

All dimensions are approximate and may vary depending on bucket selection.

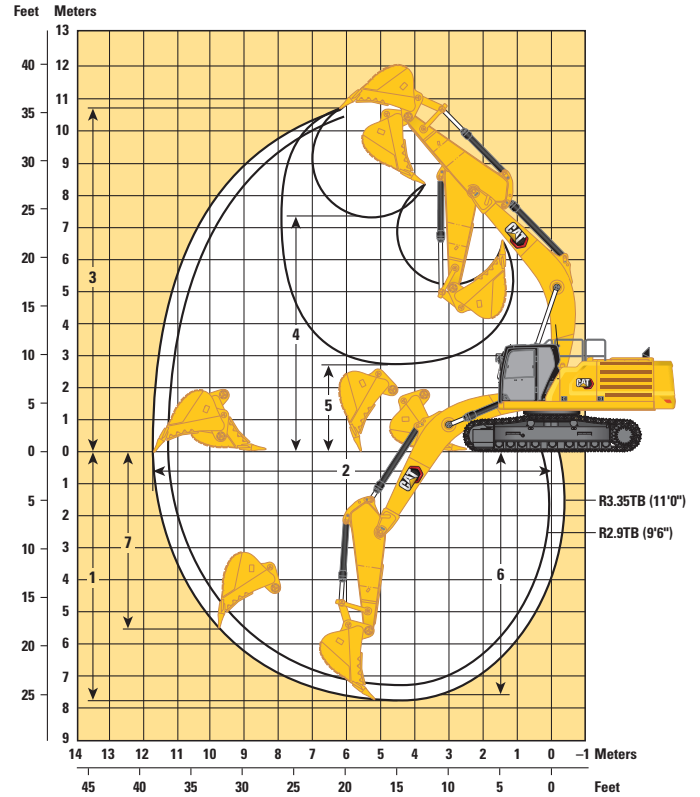
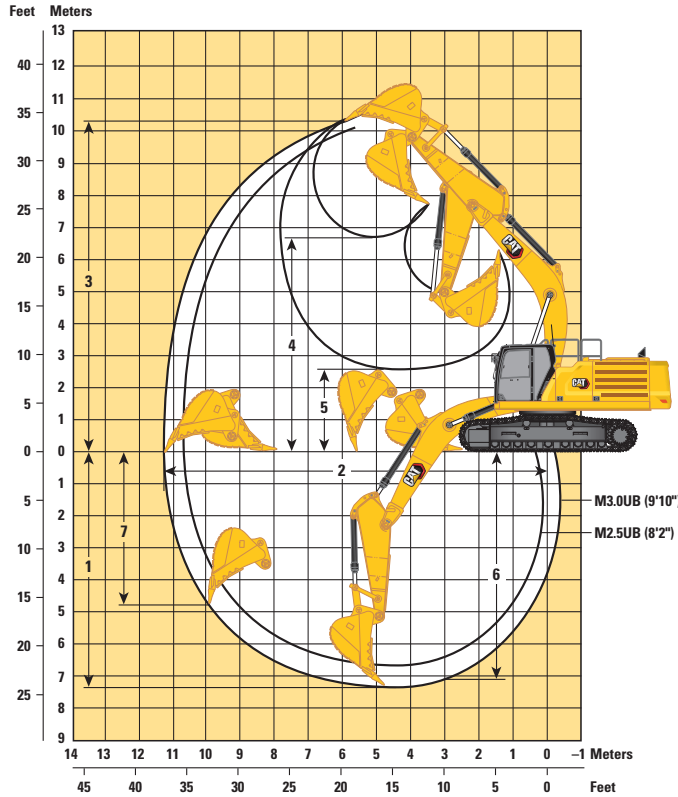


Boom Options	Mass Boom 6.55 m (21'6")				Reach Boom 6.9 m (22'8")			
	Stick Options							
	Mass Stick				Reach Stick			
	M2.5UB (8'2")		M3.0UB (9'10")		R2.9TB (9'6")		R3.35TB (11'0")	
7 Length to Center of Rollers	4360 mm	14'4"	4360 mm	14'4"	4360 mm	14'4"	4360 mm	14'4"
8 Track Length	5400 mm	17'9"	5400 mm	17'9"	5400 mm	17'9"	5400 mm	17'9"
9 Track Gauge	2740 mm	9'0"	2740 mm	9'0"	2740 mm	9'0"	2740 mm	9'0"
10 Undercarriage Width (with steps):								
600 mm (24") Shoes	3350 mm	11'0"	3350 mm	11'0"	3350 mm	11'0"	3350 mm	11'0"
750 mm (30") Shoes	3500 mm	11'6"	3500 mm	11'6"	3500 mm	11'6"	3500 mm	11'6"
Bucket Type	SD		SD		SD		SD	
Bucket Capacity	3.20 m ³	4.20 yd ³	3.20 m ³	4.20 yd ³	2.70 m ³	3.60 yd ³	2.70 m ³	3.60 yd ³
Bucket Tip Radius	2060 mm	6'9"	2060 mm	6'9"	1920 mm	6'4"	1920 mm	6'4"

350 Hydraulic Excavator Specifications

Working Ranges and Forces

All dimensions are approximate and may vary depending on bucket selection.



Boom Options

Mass Boom
6.55 m (21'6")

Reach Boom
6.9 m (22'8")

Stick Options

Mass Stick

Reach Stick

M2.5UB (8'2")

M3.0UB (9'10")

R2.9TB (9'6")

R3.35TB (11'0")

	M2.5UB (8'2")		M3.0UB (9'10")		R2.9TB (9'6")		R3.35TB (11'0")	
1 Maximum Digging Depth	6800 mm	22'4"	7300 mm	23'11"	7240 mm	23'9"	7690 mm	25'3"
2 Maximum Reach at Ground Line	10 800 mm	35'5"	11 270 mm	37'0"	11 340 mm	37'2"	11 760 mm	38'7"
3 Maximum Cutting Height	10 070 mm	33'0"	10 260 mm	33'8"	10 530 mm	34'7"	10 700 mm	35'1"
4 Maximum Loading Height	6530 mm	21'5"	6730 mm	21'1"	7200 mm	23'7"	7380 mm	24'2"
5 Minimum Loading Height	3070 mm	10'1"	2570 mm	8'5"	3160 mm	10'4"	2710 mm	24'9"
6 Maximum Depth Cut for 2240 mm (8'0") Level Bottom	6640 mm	21'9"	7160 mm	23'6"	7080 mm	23'3"	7550 mm	24'9"
7 Maximum Vertical Wall Digging Depth	4360 mm	14'4"	4800 mm	15'9"	5220 mm	17'2"	5630 mm	18'6"
Bucket Digging Force (ISO)	291 kN	65,480 lbf	291 kN	65,480 lbf	266 kN	59,820 lbf	266 kN	59,820 lbf
Stick Digging Force (ISO)	240 kN	53,850 lbf	211 kN	47,510 lbf	220 kN	49,530 lbf	200 kN	45,070 lbf
Bucket Type	SD		SD		SD		SD	
Bucket Capacity	3.20 m ³	4.20 yd ³	3.20 m ³	4.20 yd ³	2.70 m ³	3.60 yd ³	2.70 m ³	3.60 yd ³
Bucket Tip Radius	2060 mm	6'9"	2060 mm	6'9"	1920 mm	6'4"	1920 mm	6'4"

350 Hydraulic Excavator Specifications

Bucket Specifications and Compatibility

	Linkage	Width		Capacity		Weight		Fill %	6.55 m (21'6") Mass Boom		6.9 m (22'8") Reach Boom	
		mm	in	m ³	yd ³	kg	lb		M2.5 (8'2")	M3.0 (9'10")	R2.9 (9'6")	R3.35 (11'0")
Pin-On (No Quick Coupler)												
Severe Duty	TB	1700	67	2.41	3.15	2375	5,236	90			●	⊙
	TB	1850	74	2.70	3.52	2672	5,891	90			⊙	⊖
Severe Duty 2	TB	1850	73	2.70	3.53	2916	6,428	90			⊖	○
Severe Duty Extreme	TB	1850	73	2.60	3.40	3003	6,620	90			⊖	○
Heavy Duty	UB	1950	77	3.50	4.58	2883	6,355	100	○	◇		
Severe Duty	UB	1550	61	2.61	3.41	2597	5,725	90	●	⊙		
	UB	1650	65	2.80	3.62	2710	5,974	90	⊙	⊖		
	UB	1750	69	3.20	4.19	2886	6,362	90	⊖	○		
Severe Duty 2	UB	1550	61	2.61	3.41	2807	6,189	90	⊙	⊖		
	UB	1650	65	2.80	3.66	2902	6,399	90	⊙	⊖		
	UB	1850	73	3.20	4.19	3173	6,994	90	⊖	○		
Maximum load with pin-on (payload + bucket)								kg	7475	6718	6851	6227
								lb	16,480	14,811	15,104	13,728

Maximum Material Density:

- 2100 kg/m³ (3,500 lb/yd³)
- ⊙ 1800 kg/m³ (3,000 lb/yd³)
- ⊖ 1500 kg/m³ (2,500 lb/yd³)
- 1200 kg/m³ (2,000 lb/yd³)
- ◇ 900 kg/m³ (1,500 lb/yd³)

The above loads are in compliance with hydraulic excavator standard EN474-5:2006 + A3:2013, they do not exceed 87% of hydraulic lifting capacity or 75% of tipping capacity with front linkage fully extended at ground line with bucket curled.

Capacity based on ISO 7451:2007.

Bucket weight with Long tips.

Caterpillar recommends using appropriate work tools to maximize the value customers receive from our products. Use of work tools, including buckets, which are outside of Caterpillar's recommendations or specifications for weight, dimensions, flows, pressures, etc. may result in less-than-optimal performance, including but not limited to reductions in production, stability, reliability, and component durability. Improper use of a work tool resulting in sweeping, prying, twisting and/or catching of heavy loads will reduce the life of the boom and stick.

350 Hydraulic Excavator Specifications

Typical Pass Match Guide

For maximum production and efficiency, we recommend that loading and hauling machines are matched to achieve optimal performance.

Configuration*:

3.5 m³ (4.58 yd³) bucket

Passes Required to Fill Trucks to Rated Capacity

Material Type	Fill Factor	Material Density	Hauler								
			725	730	730 EJ	735	740 EJ	740 GC	745	770G	772G
			Capacity								
			24 mt (26.5 t)	28 mt (31 t)	27.1 mt (30 t)	32 mt (35.3 t)	38 mt (42 t)	36.3 mt (40 t)	41 mt (45.2 t)	38.2 mt (42.1 t)	46.8 mt (51.6 t)
Earth	100%	1600 kg/m ³ (2,700 lb/yd ³)	4-5	5	5	6	7	6-7	7	7	8
Limestone	90%	1540 kg/m ³ (2,600 lb/yd ³)	5	6	5-6	6-7	8	7-8	8-9	8	

*The indicated pass match reflects the machine configuration, fill factor, and typical material density shown. Changes to machine configurations, fill factors, or material density as well as jobsite-specific factors may influence exact pass match recommendations for your application. Consult your Cat dealer for more information.

Attachments Offering Guide

Not all Attachments are available in all regions. Consult your Cat dealer for configurations available in your region.

Match * Working range front only No Match

PIN-ON ATTACHMENTS

Boom Type		Mass Boom		Reach Boom	
Stick Length		M2.5 (8'2")	M3.0 (9'10")	R2.9 (9'6")	R3.35 (11'0")
Hydraulic Hammers	H180 GC	✓	✓	✓	✓
	H180 GC S	✓	✓	✓	✓
	H200 Side Mount	✓*		✓*	

Standard and Optional Equipment

Standard and optional equipment may vary. Consult your Cat dealer for details.

	Standard	Optional		Standard	Optional
BOOMS, STICKS AND LINKAGES			CAT TECHNOLOGY		
6.55 m (21'6") Mass boom		✓	Cat Product Link™	✓	
6.9 m (22'8") Reach boom		✓	Auto hammer stop	✓	
2.5 m (8'2") Mass stick		✓	ELECTRICAL SYSTEM		
2.9 m (9'6") Reach stick		✓	Maintenance-free battery	✓	
3.0 m (9'10") Mass stick		✓	Power fuse module	✓	
3.35 m (11'0") Reach stick		✓	Centralized electrical disconnect switch	✓	
Bucket Linkage, UB type without lifting eye		✓	LED exterior lights	✓	
Bucket Linkage, TB type without lifting eye		✓	ENGINE		
CAB			Two selectable modes: Power, Smart, and Eco	✓	
High-resolution 203 mm (8") LCD touchscreen monitor	✓		Auto engine speed control	✓	
Mechanically adjustable seat with headrest	✓		Up to 4500 m (14,760 ft) altitude capability	✓	
51 mm (2") non-retractable seat belt	✓		52° C (126° F) high-ambient cooling capacity	✓	
Automatic bi-level air conditioner	✓		-18° C (0° F) cold start capability	✓	
Keyless push-to-start engine control	✓		-32° C (-25° F) cold start capability		✓
Fixed left-side console	✓		Hydraulic reverse fan		✓
One button joystick		✓	Cold start block heaters		✓
Three button joystick		✓	Electric fuel priming pump	✓	
Radio	✓		Double element air filter with integrated pre-cleaner	✓	
24V DC outlet	✓		115 amp alternator	✓	
Console storage	✓		Single plane three horizontal cooling system	✓	
Coat hook	✓		Primary filter with water separator and water separator indicator switch	✓	
70/30 tempered glass windshield	✓		Secure start with PIN code	✓	
Openable steel hatch	✓				
Rear window emergency exit	✓				
LED dome light	✓				
Roller front sunscreen	✓				
Roller rear sunscreen		✓			
FOGS compatible ISO 10262:1998 level II		✓			
Washable floor mat	✓				

(continued on next page)

350 Standard and Optional Equipment

Standard and Optional Equipment *(continued)*

Standard and optional equipment may vary. Consult your Cat dealer for details.

	Standard	Optional		Standard	Optional
HYDRAULIC SYSTEM			SERVICE AND MAINTENANCE		
Electronic main control valve with Tool Control	✓		Grouped location for engine oil and fuel filters	✓	
Hydraulic main pump	✓		Scheduled Oil Sampling (S·O·S SM) ports	✓	
Boom and stick regeneration circuit	✓		UNDERCARRIAGE AND STRUCTURES		
Auto hydraulic oil warmup	✓		600 mm (24") double grouser track shoes		✓
Reverse swing damping valve	✓		600 mm (24") HD double grouser track shoes		✓
Automatic swing parking brake	✓		750 mm (30") double grouser track shoes		✓
High performance hydraulic return filter	✓		750 mm (30") triple grouser track shoes		✓
Two-speed travel	✓		Grease lubricated track	✓	
Bio hydraulic oil capability	✓		Three-piece segmented track guiding guards		✓
SAFETY AND SECURITY			Full-length track guiding guards		✓
Caterpillar One Key security system	✓		Bottom guards		✓
Lockable external tool/storage box	✓		HD bottom guards		✓
Lockable door, fuel, and hydraulic tank locks	✓		9000 kg (19,840 lb) counterweight	✓	
Right-hand handrail and hand hold (ISO 2867 compliant)	✓		Towing eye on base frame (ISO 15818 compliant)	✓	
Mirror package	✓				
Signaling/warning horn	✓				
Ground-level secondary engine shutoff switch	✓				
Camera, rearview and right-hand-sideview mirrors	✓				

Dealer Installed Kits and Attachments

Attachments may vary. Consult your Cat dealer for details.

CAB

- Sunshade

GUARDS

- FOGS (not compatible with cab light cover, rain protector)
- Mesh guard full front (not compatible with cab light cover, rain protector)
- Mesh guard lower half front

SERVICE AND MAINTENANCE

- Grease gun holder

350 Environmental Declaration

The following information applies to the machine at the time of final manufacture as configured for sale in the regions covered in this document. The content of this declaration is valid as of the date issued; however, content related to machine features and specifications are subject to change without notice. For additional information, please see the machine's Operation and Maintenance Manual.

For more information on sustainability in action and our progress, please visit <https://www.caterpillar.com/en/company/sustainability>.

Engine

- The 350 meets China Nonroad Stage IV emission standards.
- Cat diesel engines are required to use ULSD (ultra-low sulfur diesel fuel with 15 ppm of sulfur or less) or ULSD blended with the following lower-carbon intensity fuels up to:
 - ✓ 20% biodiesel FAME (fatty acid methyl ester)*
 - ✓ 100% renewable diesel, HVO (hydrogenated vegetable oil) and GTL (gas-to-liquid) fuels

Refer to guidelines for successful application. Please consult your Cat dealer or "Caterpillar Machine Fluids Recommendations" (SEBU6250) for details.

**Engines with no aftertreatment devices can use higher blends, up to 100% biodiesel.*

Air Conditioning System

- The air conditioning system on this machine contains the fluorinated greenhouse gas refrigerant R134a (Global Warming Potential = 1430). The system contains 1.0 kg (2.2 lb) of refrigerant which has a CO₂ equivalent of 1.430 metric tonnes (1.576 tons).

Paint

- Based on best available knowledge, the maximum allowable concentration, measured in parts per million (PPM), of the following heavy metals in paint are:
 - Barium < 0.01%
 - Cadmium < 0.01%
 - Chromium < 0.01%
 - Lead < 0.01%

Oils and Fluids

- Caterpillar factory fills with ethylene glycol coolants. Cat Diesel Engine Antifreeze/Coolant (DEAC) and Cat Extended Life Coolant (ELC) can be recycled. Consult your Cat dealer for more information.
- Cat Bio HYDO™ Advanced is an EU Ecolabel approved biodegradable hydraulic oil.
- Additional fluids are likely to be present, please consult the Operations and Maintenance Manual or the Application and Installation guide for complete fluid recommendations and maintenance intervals.

Features and Technology

- The following features and technology may contribute to fuel savings and/or carbon reduction. Features may vary. Consult your Cat dealer for details.
 - Advanced hydraulic systems balance power and efficiency
 - Smart mode matches machine power to digging requirements automatically
 - Eco mode minimizes fuel consumption for light applications
 - Remotely monitor fuel consumption, machine health, location, and hours on demand through Product Link™ and VisionLink®
 - Cut maintenance costs with extended service intervals and longer life fuel, oil, and air filters

For more complete information on Cat products, dealer services, and industry solutions, visit us on the web at www.cat.com

© 2022 Caterpillar
All rights reserved

Materials and specifications are subject to change without notice. Featured machines in photos may include additional equipment. See your Cat dealer for available options.

CAT, CATERPILLAR, LET'S DO THE WORK, their respective logos, "Caterpillar Corporate Yellow," the "Power Edge" and Cat "Modern Hex" trade dress as well as corporate and product identity used herein, are trademarks of Caterpillar and may not be used without permission. VisionLink is a trademark of Caterpillar Inc., registered in the United States and in other countries.

AEXQ3033-04 (11-2022)
Replaces AEXQ3033-03
Build Number: 06B
(China)

