



# 349

## Hydraulic Excavator

# Technical Specifications

Configurations and features may vary by region. Please consult your Cat® dealer for availability in your area.

### Table of Contents

<b>Specifications</b> .....	<b>2</b>
Engine .....	2
Swing Mechanism .....	2
Weights .....	2
Track .....	2
Drive .....	2
Hydraulic System .....	2
Service Refill Capacities .....	2
Standards .....	2
Sound Performance .....	2
Operating Weights and Ground Pressures .....	3
Major Component Weights .....	4
Dimensions .....	5
Working Ranges and Forces .....	9
Long Reach Boom Lift Capacities – Counterweight: 9.0 mt (19,842 lb) .....	11
Reach Boom Lift Capacities – Counterweight: 9.0 mt (19,842 lb) .....	14
Mass Boom Lift Capacities – Counterweight: 9.0 mt (19,842 lb) .....	23
Bucket Specifications and Compatibility:	
Australia, New Zealand .....	26
North America .....	27
Korea .....	29
Attachments Offering Guide:	
Australia, New Zealand .....	30
North America .....	31
Korea .....	33
<b>Standard and Optional Equipment</b> .....	<b>34</b>
<b>Dealer Installed Kit and Attachments</b> .....	<b>36</b>
<b>Cab Options</b> .....	<b>36</b>

# 349 Hydraulic Excavator Specifications

## Engine

Engine Model	Cat® C13	
Net Power – ISO 9249	316 kW	424 hp
Engine Power – ISO 14396	317 kW	425 hp
Bore	130 mm	5 in
Stroke	157 mm	6 in
Displacement	12.5 L	763 in <sup>3</sup>

- Meets U.S. EPA Tier 4 Final, EU Stage V, and Korea Tier 4 Final emission standards.
- Recommended for use up to 4500 m (14,764 ft) altitude with engine power derate above 2600 m (8,530 ft).
- Net power is tested per ISO 9249. Standards in effect at the time of manufacture.
- Net power advertised is the power available at the flywheel when the engine is equipped with fan, air intake system, exhaust system and alternator.
- Rated speed at 1,800 rpm.

## Swing Mechanism

Swing Speed	8.44 rpm	
Maximum Swing Torque	187 kN·m	138,000 lbf·ft

## Weights

Operating Weight	47 700 kg	105,200 lb
• Reach boom, R3.35 m TB (11'0") stick, GDC 3.08 m <sup>3</sup> (4.03 yd <sup>3</sup> ) bucket, 600 mm (24") double grouser shoes, 9.0 mt (19,842 lb) counterweight.		
Operating Weight	49 400 kg	108,900 lb
• Reach boom, R3.9 m TB (12'10") stick, GDC 3.08 m <sup>3</sup> (4.03 yd <sup>3</sup> ) bucket, 900 mm (35") triple grouser shoes, 9.0 mt (19,842 lb) counterweight.		
Operating Weight	50 100 kg	110,400 lb
• Long Reach boom, LR4.3 m TB (14'1") stick, GDC 3.08 m <sup>3</sup> (4.03 yd <sup>3</sup> ) bucket, 900 mm (35") triple grouser shoes, 9.0 mt (19,842 lb) counterweight.		

## Track

Track Shoes Width	900 mm	35 in
Track Shoes Width	750 mm	30 in
Track Shoes Width	600 mm	24 in
Number of Shoes (each side)	52	
Number of Track Rollers (each side)	9	
Number of Carrier Rollers (each side)	2	

## Drive

Gradeability	35°/70%	
Maximum Travel Speed	4.8 km/h	3.0 mph
Maximum Drawbar Pull	334 kN	75,086 lbf

## Hydraulic System

Main System – Maximum Flow – Implement	779 L/min (389 × 2 pumps)	206 gal/min (103 × 2 pumps)
Maximum Pressure – Equipment – Implement	35 000 kPa	5,076 psi
Maximum Pressure – Equipment – Lift Mode	38 000 kPa	5,511 psi
Maximum Pressure – Travel	35 000 kPa	5,076 psi
Maximum Pressure – Swing	26 000 kPa	3,771 psi
Boom Cylinder – Bore	170 mm	7 in
Boom Cylinder – Stroke	1524 mm	60 in
Stick Cylinder – Bore	190 mm	7 in
Stick Cylinder – Stroke	1758 mm	69 in
TB Bucket Cylinder – Bore	160 mm	6 in
TB Bucket Cylinder – Stroke	1356 mm	53 in
UB Bucket Cylinder – Bore	170 mm	7 in
UB Bucket Cylinder – Stroke	1396 mm	55 in

## Service Refill Capacities

Fuel Tank Capacity	715 L	188.9 gal
Cooling System	52 L	13.7 gal
Engine Oil (with filter)	40 L	10.6 gal
Swing Drive	10.5 L	2.8 gal
Final Drive (each)	15 L	4.0 gal
Hydraulic System (including tank)	550 L	145.3 gal
Hydraulic Tank (including suction pipe)	217 L	57.3 gal
DEF Tank	46 L	12.2 gal

## Standards

Brakes	ISO 10265:2008
Cab/ROPS	ISO 12117-2:2008

## Sound Performance

ISO 6395:2008 (external)	108 dB(A)
ISO 6396:2008 (inside cab)	72 dB(A)

- Hearing protection may be needed when operating with an open operator station and cab (when not properly maintained or doors/windows open) for extended periods or in a noisy environment.

# 349 Hydraulic Excavator Specifications

## Operating Weights and Ground Pressures

	600 mm (24") Double Grouser Shoes		600 mm (24") HD Double Grouser Shoes		750 mm (30") Triple Grouser Shoes		750 mm (30") Single Grouser Shoes		900 mm (35") Triple Grouser Shoes	
	Ground Weight Pressure		Ground Weight Pressure		Ground Weight Pressure		Ground Weight Pressure		Ground Weight Pressure	
	kg (lb)	kPa (psi)	kg (lb)	kPa (psi)	kg (lb)	kPa (psi)	kg (lb)	kPa (psi)	kg (lb)	kPa (psi)
<b>Base Frame with Single Flange Track Rollers and Carrier Rollers</b>										
<b>9.0 mt (19,842 lb) Counterweight + Fixed Gauge Long Undercarriage Base Machine</b>										
Long Reach Boom + LR4.3 m TB (14'1") Stick + 3.08 m <sup>3</sup> (4.03 yd <sup>3</sup> ) GDC Bucket	48 700 (107,300)	90.7 (13.1)	49 100 (107,300)	91.5 (13.3)	49 300 (108,700)	78.7 (11.4)	49 400 (108,800)	69.0 (10.0)	50 100 (110,400)	65.8 (9.5)
Reach Boom + R3.9 m TB (12'10") Stick + 3.08 m <sup>3</sup> (4.03 yd <sup>3</sup> ) GDC Bucket	48 000 (105,800)	89.4 (13.0)	48 400 (106,700)	90.2 (13.1)	48 600 (107,200)	90.6 (13.1)	48 700 (107,300)	90.7 (13.2)	49 400 (108,800)	92.0 (13.3)
Reach Boom + R3.35 m TB (11'0") Stick + 3.08 m <sup>3</sup> (4.03 yd <sup>3</sup> ) GDC Bucket	47 800 (105,400)	89.1 (12.9)	48 300 (106,400)	89.9 (13.0)	48 400 (106,800)	90.3 (13.1)	48 500 (107,000)	90.4 (13.1)	49 200 (108,500)	91.7 (13.3)
Reach Boom + R2.9 m TB (9'6") Stick + 3.08 m <sup>3</sup> (4.03 yd <sup>3</sup> ) GDC Bucket	47 700 (105,300)	88.9 (12.9)	48 200 (106,200)	89.7 (13.0)	48 400 (106,700)	90.1 (13.1)	48 400 (106,800)	90.2 (13.1)	49 100 (108,300)	91.5 (13.3)
Mass Boom + M3.0 m UB (9'10") Stick + 3.21 m <sup>3</sup> (4.20 yd <sup>3</sup> ) GDC Bucket	49 200 (108,500)	91.7 (13.3)	49 600 (109,400)	92.5 (13.4)	49 800 (109,900)	92.8 (13.5)	49 900 (110,000)	92.9 (13.5)	50 600 (111,500)	94.2 (13.7)
Mass Boom + M2.5 m UB (8'2") Stick + 3.21 m <sup>3</sup> (4.20 yd <sup>3</sup> ) GDC Bucket	49 000 (108,100)	91.3 (13.2)	49 500 (109,000)	92.1 (13.4)	49 700 (109,000)	92.5 (13.4)	49 700 (109,600)	92.6 (13.4)	50 400 (111,100)	93.9 (13.6)
<b>8.6 mt (18,960 lb) Counterweight with Removal Device + Fixed Gauge Long Undercarriage Base Machine</b>										
Long Reach Boom + LR4.3 m TB (14'1") Stick + 3.08 m <sup>3</sup> (4.03 yd <sup>3</sup> ) GDC Bucket	48 700 (106,500)	90.7 (13.1)	48 700 (108,300)	91.5 (13.3)	49 300 (108,700)	78.7 (11.4)	49 400 (108,800)	69.0 (10.0)	50 100 (110,400)	65.8 (9.5)
Reach Boom + R3.9 m TB (12'10") Stick + 3.08 m <sup>3</sup> (4.03 yd <sup>3</sup> ) GDC Bucket	48 000 (105,800)	89.4 (13.0)	48 400 (106,700)	90.2 (13.1)	48 600 (107,200)	77.6 (11.3)	48 700 (107,300)	68.0 (9.9)	49 400 (108,800)	64.9 (9.4)
Reach Boom + R3.35 m TB (11'0") Stick + 3.08 m <sup>3</sup> (4.03 yd <sup>3</sup> ) GDC Bucket	47 800 (105,400)	89.1 (12.9)	48 300 (106,400)	89.9 (13.0)	48 500 (106,800)	90.3 (13.1)	48 500 (107,000)	90.4 (13.1)	49 200 (108,500)	91.7 (13.3)
Reach Boom + R2.9 m TB (9'6") Stick + 3.08 m <sup>3</sup> (4.03 yd <sup>3</sup> ) GDC Bucket	48 300 (106,500)	90.0 (13.1)	48 700 (107,400)	90.8 (13.2)	48 900 (107,900)	91.2 (13.2)	49 000 (108,000)	91.3 (13.2)	49 700 (109,500)	92.6 (13.4)
Mass Boom + M3.0 m UB (9'10") Stick + 3.21 m <sup>3</sup> (4.20 yd <sup>3</sup> ) GDC Bucket	49 200 (108,500)	91.7 (13.3)	49 600 (109,400)	92.5 (13.4)	49 800 (109,900)	92.8 (13.5)	49 900 (110,000)	92.9 (13.5)	50 600 (111,500)	94.2 (13.7)
Mass Boom + M2.5 m UB (8'2") Stick + 3.21 m <sup>3</sup> (4.20 yd <sup>3</sup> ) GDC Bucket	49 000 (108,100)	91.3 (13.2)	49 500 (109,000)	92.1 (13.4)	49 700 (109,500)	92.5 (13.4)	49 700 (109,600)	92.6 (13.4)	50 400 (111,100)	93.9 (13.6)

All operating weights include a 90% fuel tank with 75 kg (165 lb) operator.

# 349 Hydraulic Excavator Specifications

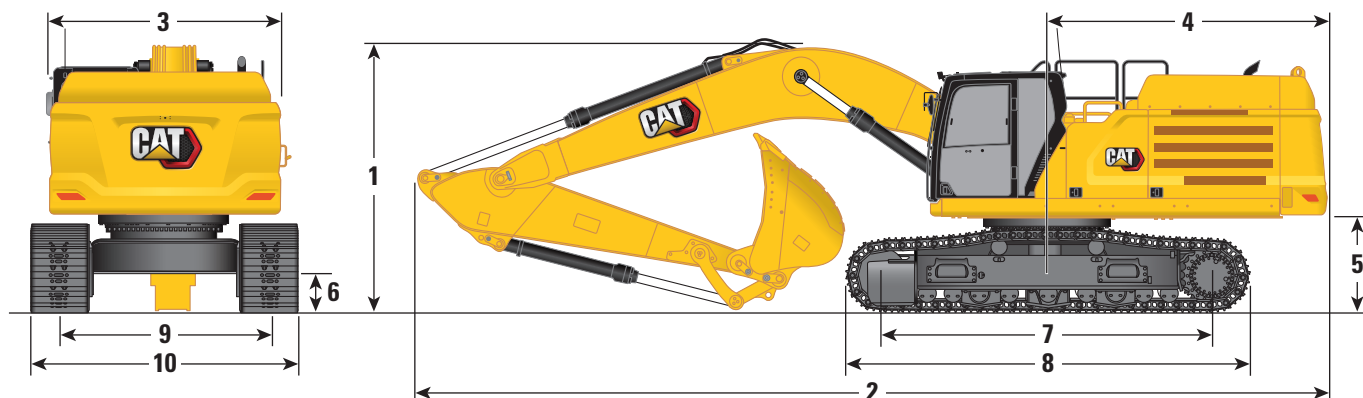
## Major Component Weights

	kg	lb
Base machine with 9.0 mt (19,842 lb) counterweight, standard swing frame, base frame with single flange track rollers and carrier rollers	32 520	71,700
Base machine with 8.6 mt (18,960 lb) counterweight, counterweight removal swing frame, base frame with single flange track rollers and carrier rollers	32 770	72,250
Track Shoes:		
600 mm (24") Width, 15.5 mm (0.6") Thick, Double Grouser Track Shoes	5410	11,920
600 mm (24") Width, 19.5 mm (0.8") Thick, HD Double Grouser Track Shoes	5840	12,870
750 mm (30") Width, 15.5 mm (0.6") Thick, Triple Grouser Track Shoes	6040	13,310
750 mm (30") Width, 17.7 mm (0.7") Thick, Single Grouser Track Shoes	6100	13,450
900 mm (35") Width, 15.5 mm (0.6") Thick, Triple Grouser Track Shoes	6790	14,970
Two Boom Cylinders	1760	3,880
Weight of 90% Fuel Tank and 75 kg (165 lb) Operator	630	1,380
Counterweights:		
9.0 mt Counterweight	9000	19,842
8.6 mt Counterweight for Counterweight Removal	8680	18,960
Swing Frames:		
Standard Swing Frame	4070	8,980
Counterweight Removal Swing Frame	4160	9,160
Fixed Gauge Long Undercarriage:		
Base Frame with Single Flange Track Rollers and Carrier Rollers	6870	15,150
Booms (including lines, pins, stick cylinder):		
Long Reach Boom 7.4 m (24'2")	4730	10,430
Reach Boom 6.9 m (22'8")	4410	9,720
Mass Boom 6.55 m (21'6")	4720	10,420
Sticks (including lines, pins, bucket cylinder, bucket linkage):		
Long Reach Stick LR4.3TB (14'1")	3030	6,680
Reach Stick R3.9TB (12'10")	2660	5,870
Reach Stick R3.35TB (11'0")	2510	5,540
Reach Stick R2.9TB (9'6")	2430	5,350
Mass Stick M3.0UB (9'10")	2950	6,510
Mass Stick M2.5UB (8'2")	2770	6,110
Bucket (without linkage):		
3.08 m <sup>3</sup> (4.03 yd <sup>3</sup> ) GDC for TB	2360	5,190
Quick Coupler:		
Pin Grabber QC	1060	2,340

# 349 Hydraulic Excavator Specifications

## Dimensions

All dimensions are approximate and may vary depending on bucket selection.



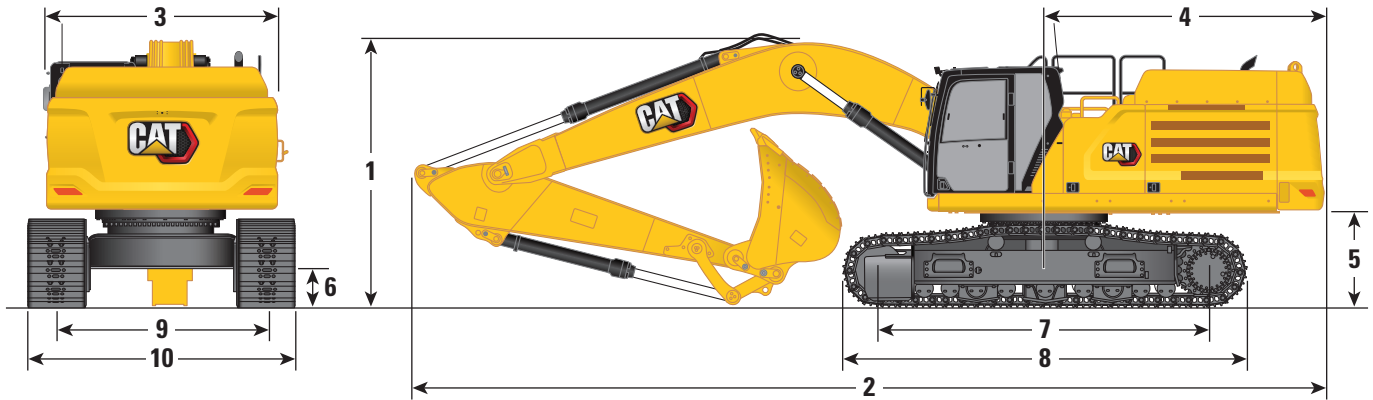
Boom Options	Long Reach Boom 7.4 m (24'2")				Reach Boom 6.9 m (22'8")			
	Stick Options							
	Long Reach Stick				Reach Stick			
	LR4.3TB (14'1")		R3.9TB (12'10")		R3.35TB (11'0")		R2.9TB (9'6")	
	mm	ft/in	mm	ft/in	mm	ft/in	mm	ft/in
<b>1 Machine Height:</b>								
Cab Height	3230	10'7"	3230	10'7"	3230	10'7"	3230	10'7"
FOGS Height	3370	11'0"	3370	11'0"	3370	11'0"	3370	11'0"
Handrails Height	3370	11'0"	3370	11'0"	3370	11'0"	3370	11'0"
With Boom/Stick/Bucket Installed	3680	12'0"	3670	12'0"	3680	12'0"	3670	12'0"
With Boom/Stick Installed	3700	12'1"	3650	11'11"	3550	11'7"	3460	11'4"
With Boom Installed	3160	10'4"	3100	10'2"	3100	10'2"	3100	10'2"
With Boom/Stick/Bucket Installed (with Auxiliary Lines)	3680	12'0"	3670	12'0"	3680	12'0"	3670	12'0"
With Boom/Stick Installed (with Auxiliary Lines)	3700	12'1"	3650	11'11"	3550	11'7"	3490	11'5"
With Boom Installed (with Auxiliary Lines)	3210	10'6"	3130	10'3"	3130	10'3"	3130	10'3"
<b>2 Machine Length:</b>								
With Boom/Stick/Bucket Installed	12 420	40'8"	11 940	39'2"	11 920	39'1"	11 920	39'1"
With Boom/Stick Installed	12 430	40'9"	11 930	39'1"	11 880	38'11"	11 860	38'10"
With Boom Installed	11 180	36'8"	10 650	34'11"	10 650	34'11"	10 650	34'11"
With Boom/Stick/Bucket Installed (with Auxiliary Lines)	12 420	40'8"	11 940	39'2"	11 920	39'1"	11 920	39'1"
With Boom/Stick Installed (with Auxiliary Lines)	12 430	40'9"	11 930	39'1"	11 880	38'11"	11 860	38'10"
With Boom Installed (with Auxiliary Lines)	11 180	36'8"	10 650	34'11"	10 650	34'11"	10 650	34'11"
Bucket Type	GDC		GDC		GDC		GDC	
Bucket Capacity	3.08 m <sup>3</sup>	4.03 yd <sup>3</sup>	3.08 m <sup>3</sup>	4.03 yd <sup>3</sup>	3.08 m <sup>3</sup>	4.03 yd <sup>3</sup>	3.08 m <sup>3</sup>	4.03 yd <sup>3</sup>
Bucket Tip Radius	2071 mm	6'9"	2071 mm	6'9"	2071 mm	6'9"	2071 mm	6'9"

(continued on next page)

# 349 Hydraulic Excavator Specifications

## Dimensions (continued)

All dimensions are approximate and may vary depending on bucket selection.

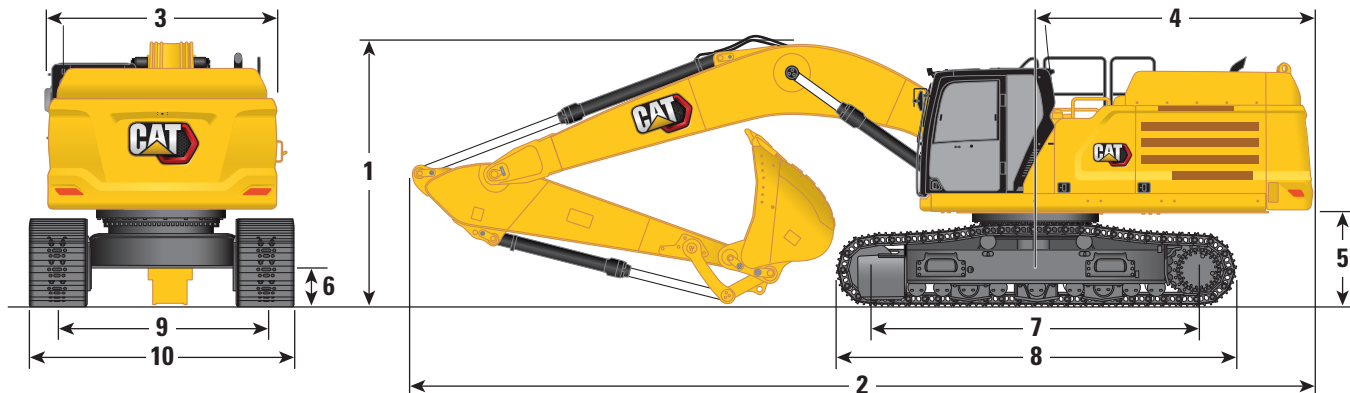


Boom Options	Long Reach Boom 7.4 m (24'2")				Reach Boom 6.9 m (22'8")			
Stick Options	Long Reach Stick				Reach Stick			
	LR4.3TB (14'1")		R3.9TB (12'10")		R3.35TB (11'0")		R2.9TB (9'6")	
	mm	ft/in	mm	ft/in	mm	ft/in	mm	ft/in
<b>3</b> Upperframe Width without Walkways	3020	9'10"	3020	9'10"	3020	9'10"	3020	9'10"
<b>4</b> Tail Swing Radius	3760	12'4"	3760	12'4"	3760	12'4"	3760	12'4"
<b>5</b> Counterweight Clearance without Shoe Lug	1280	4'2"	1280	4'2"	1280	4'2"	1280	4'2"
<b>6</b> Ground Clearance without Shoe Lug	475	1'6"	475	1'6"	475	1'6"	475	1'6"
<b>7</b> Length to Center of Rollers	4360	14'3"	4360	14'3"	4360	14'3"	4360	14'3"
<b>8</b> Track Length	5370	17'7"	5370	17'7"	5370	17'7"	5370	17'7"
<b>9</b> Track Gauge	2740	8'11"	2740	8'11"	2740	8'11"	2740	8'11"
<b>10</b> Undercarriage Width								
600 mm (24") Shoes	3530	11'6"	3530	11'6"	3530	11'6"	3530	11'6"
750 mm (30") Shoes	3530	11'6"	3530	11'6"	3530	11'6"	3530	11'6"
900 mm (35") Shoes	3640	11'11"	3640	11'11"	3640	11'11"	3640	11'11"
Bucket Type	GDC		GDC		GDC		GDC	
Bucket Capacity	3.08 m <sup>3</sup>	4.03 yd <sup>3</sup>	3.08 m <sup>3</sup>	4.03 yd <sup>3</sup>	3.08 m <sup>3</sup>	4.03 yd <sup>3</sup>	3.08 m <sup>3</sup>	4.03 yd <sup>3</sup>
Bucket Tip Radius	2071 mm	6'9"	2071 mm	6'9"	2071 mm	6'9"	2071 mm	6'9"

# 349 Hydraulic Excavator Specifications

## Dimensions

All dimensions are approximate and may vary depending on bucket selection.



### Boom Option

Mass Boom  
6.55 m (21'6")

### Stick Options

Mass Stick

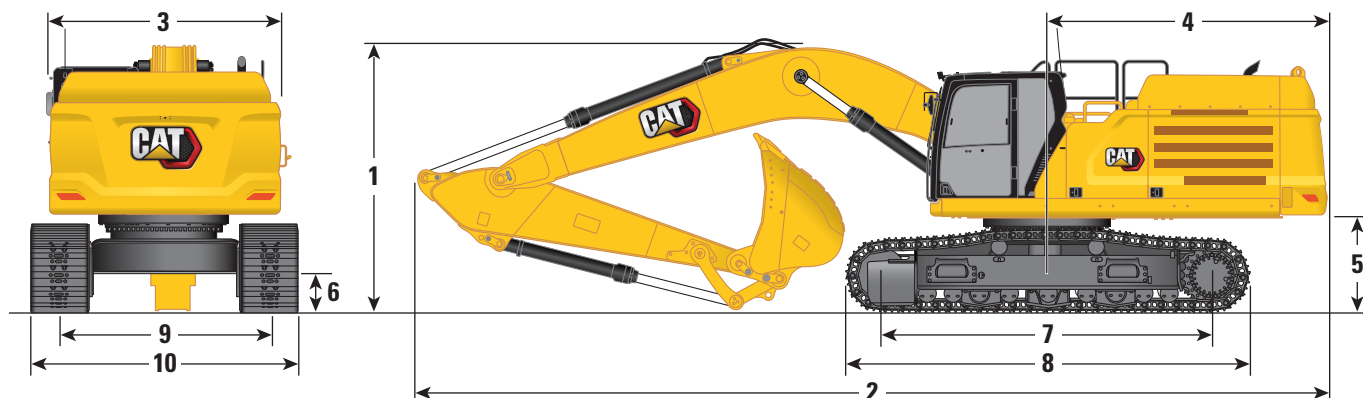
	M3.0UB (9'10")		M2.5UB (8'2")	
	mm	ft/in	mm	ft/in
<b>1 Machine Height:</b>				
Cab Height	3230	10'7"	3230	10'7"
FOGS Height	3370	11'0"	3370	11'0"
Handrails Height	3370	11'0"	3370	11'0"
With Boom/Stick/Bucket Installed	4270	14'0"	4000	13'1"
With Boom/Stick Installed	3780	12'4"	3740	12'3"
With Boom Installed	3170	10'4"	3170	10'4"
With Boom/Stick/Bucket Installed (with Auxiliary Lines)	4270	14'0"	4000	13'1"
With Boom/Stick Installed (with Auxiliary Lines)	3780	12'4"	3740	12'3"
With Boom Installed (with Auxiliary Lines)	3190	10'5"	3190	10'5"
<b>2 Machine Length:</b>				
With Boom/Stick/Bucket Installed	11 640	38'2"	11 680	38'3"
With Boom/Stick Installed	11 540	37'10"	11 590	38'0"
With Boom Installed	10 290	33'9"	10 290	33'9"
With Boom/Stick/Bucket Installed (with Auxiliary Lines)	11 640	38'2"	11 680	38'3"
With Boom/Stick Installed (with Auxiliary Lines)	11 540	37'10"	11 590	38'0"
With Boom Installed (with Auxiliary Lines)	10 290	33'9"	10 290	33'9"
Bucket Type	SD		SD	
Bucket Capacity	3.21 m <sup>3</sup>	4.20 yd <sup>3</sup>	3.21 m <sup>3</sup>	4.20 yd <sup>3</sup>
Bucket Tip Radius	1888 mm	6'2"	1888 mm	6'2"

(continued on next page)

# 349 Hydraulic Excavator Specifications

## Dimensions *(continued)*

All dimensions are approximate and may vary depending on bucket selection.



### Boom Option

**Mass Boom**  
6.55 m (21'6")

### Stick Options

**Mass Stick**

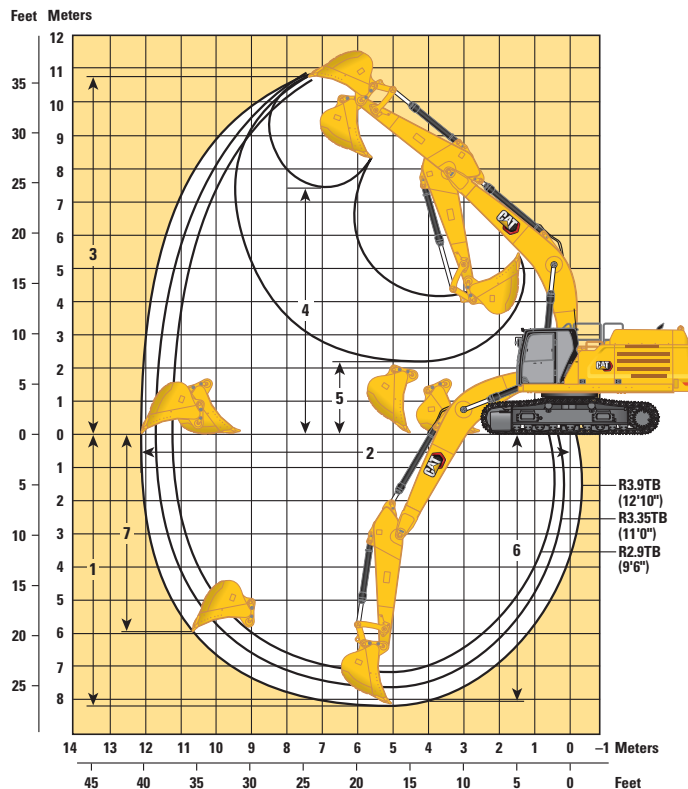
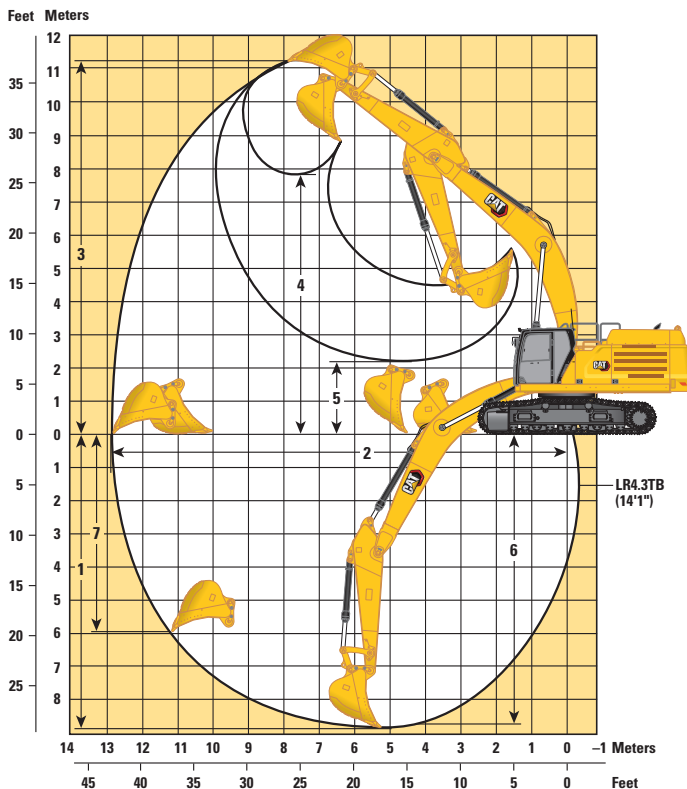
	M3.0UB (9'10")		M2.5UB (8'2")	
	mm	ft/in	mm	ft/in
<b>3</b> Upperframe Width without Walkways	3020	9'10"	3020	9'10"
<b>4</b> Tail Swing Radius	3760	12'4"	3760	12'4"
<b>5</b> Counterweight Clearance without Shoe Lug	1280	4'2"	1280	4'2"
<b>6</b> Ground Clearance without Shoe Lug	475	1'6"	475	1'6"
<b>7</b> Length to Center of Rollers	4360	14'3"	4360	14'3"
<b>8</b> Track Length	5370	17'7"	5370	17'7"
<b>9</b> Track Gauge	2740	8'11"	2740	8'11"
<b>10</b> Undercarriage Width				
600 mm (24") Shoes	3530	11'6"	3530	11'6"
750 mm (30") Shoes	3530	11'6"	3530	11'6"
900 mm (35") Shoes	3640	11'11"	3640	11'11"
Bucket Type	SD		SD	
Bucket Capacity	3.21 m <sup>3</sup>	4.20 yd <sup>3</sup>	3.21 m <sup>3</sup>	4.20 yd <sup>3</sup>
Bucket Tip Radius	1888 mm	6'2"	1888 mm	6'2"



# 349 Hydraulic Excavator Specifications

## Working Ranges and Forces

All dimensions are approximate and may vary depending on bucket selection.



### Boom Options

#### Long Reach Boom 7.4 m (24'2")

#### Reach Boom 6.9 m (22'8")

### Stick Options

#### Long Reach Stick

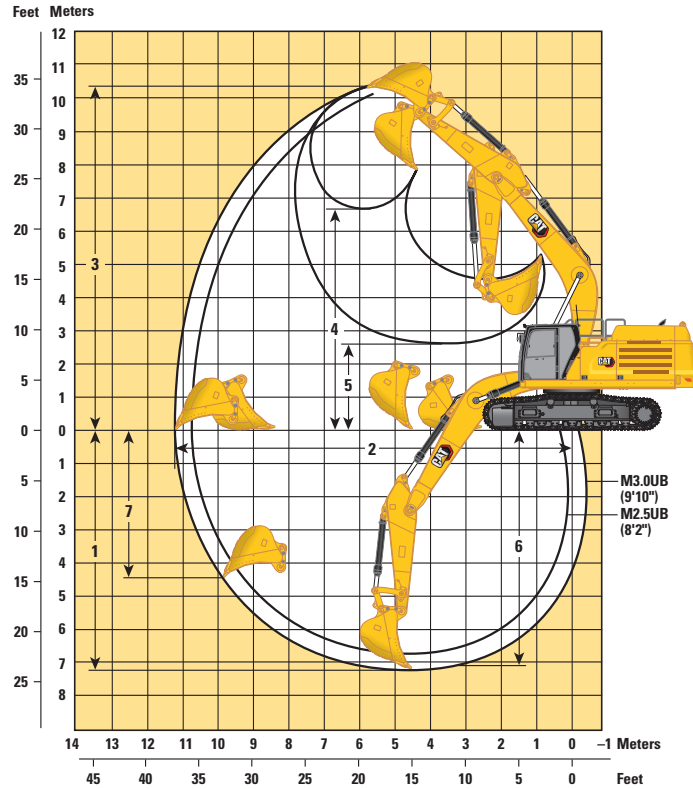
#### Reach Stick

	LR4.3TB (14'1")		R3.9TB (12'10")		R3.35TB (11'0")		R2.9TB (9'6")	
<b>1</b> Maximum Digging Depth	8940 mm	29'3"	8210 mm	26'11"	7660 mm	25'1"	7210 mm	23'7"
<b>2</b> Maximum Reach at Ground Line	12 960 mm	42'6"	12 150 mm	39'10"	11 730 mm	38'5"	11 320 mm	37'1"
<b>3</b> Maximum Cutting Height	11 170 mm	36'7"	10 730 mm	35'2"	10 820 mm	35'5"	10 640 mm	34'10"
<b>4</b> Maximum Loading Height	7870 mm	25'9"	7420 mm	24'4"	7430 mm	24'4"	7250 mm	23'9"
<b>5</b> Minimum Loading Height	2220 mm	7'3"	2200 mm	7'2"	2750 mm	9'0"	3200 mm	10'5"
<b>6</b> Maximum Depth Cut for 2440 mm (8 ft) Level Bottom	8810 mm	28'10"	8080 mm	26'6"	7520 mm	24'8"	7050 mm	23'1"
<b>7</b> Maximum Vertical Wall Digging Depth	6560 mm	21'6"	5960 mm	19'6"	5830 mm	19'1"	5420 mm	17'9"
Bucket Digging Force (ISO)	267 kN	60,020 lbf	268 kN	60,250 lbf	268 kN	60,250 lbf	268 kN	60,250 lbf
Stick Digging Force (ISO)	170 kN	38,220 lbf	183 kN	41,140 lbf	199 kN	44,740 lbf	219 kN	49,230 lbf
Bucket Type	GDC		GDC		GDC		GDC	
Bucket Capacity	3.08 m <sup>3</sup>	4.03 yd <sup>3</sup>	3.08 m <sup>3</sup>	4.03 yd <sup>3</sup>	3.08 m <sup>3</sup>	4.03 yd <sup>3</sup>	3.08 m <sup>3</sup>	4.03 yd <sup>3</sup>
Bucket Tip Radius	2071 mm	6'9"	2071 mm	6'9"	2071 mm	6'9"	2071 mm	6'9"

# 349 Hydraulic Excavator Specifications

## Working Ranges and Forces

All dimensions are approximate and may vary depending on bucket selection.



### Boom Option

**Mass Boom**  
6.55 m (21'6")

### Stick Options

**Mass Stick**

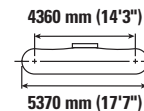
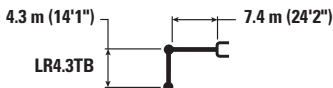
**M3.0UB (9'10")**

**M2.5UB (8'2")**

	M3.0UB (9'10")	M2.5UB (8'2")
<b>1</b> Maximum Digging Depth	7310 mm	23'11"
<b>2</b> Maximum Reach at Ground Line	11 270 mm	36'11"
<b>3</b> Maximum Cutting Height	10 290 mm	33'9"
<b>4</b> Maximum Loading Height	6740 mm	22'1"
<b>5</b> Minimum Loading Height	2570 mm	8'5"
<b>6</b> Maximum Depth Cut for 2440 mm (8 ft) Level Bottom	7160 mm	23'5"
<b>7</b> Maximum Vertical Wall Digging Depth	4430 mm	14'6"
Bucket Digging Force (ISO)	290 kN	65,190 lbf
Stick Digging Force (ISO)	211 kN	47,430 lbf
Bucket Type	SD	SD
Bucket Capacity	3.21 m <sup>3</sup>	4.20 yd <sup>3</sup>
Bucket Tip Radius	1888 mm	6'2"

# 349 Hydraulic Excavator Specifications

## Long Reach Boom Lift Capacities – Counterweight: 9.0 mt (19,842 lb) – without Bucket, Heavy Lift: On



		1.5 m/5.0 ft		3.0 m/10.0 ft		4.5 m/15.0 ft		6.0 m/20.0 ft		7.5 m/25.0 ft		9.0 m/30.0 ft		10.5 m/35.0 ft				m ft/in		
9.0 m 30.0 ft	kg lb																*7100 *15,750	*7100 *15,750	8.90 29'2"	
7.5 m 25.0 ft	kg lb											*9700 *20,750	8500 18,200				*6900 *15,200	*6900 *15,200	9.89 32'6"	
6.0 m 20.0 ft	kg lb											*10 100 *22,050	8300 17,850	*7300 6350			*6900 *15,150	6250 13,850	10.57 35'0"	
4.5 m 15.0 ft	kg lb							*14 250 *30,700	*14 250 *30,700	*12 100 *26,200	10 700 23,050	*10 800 *23,500	8000 17,250	*9800 *19,650	6200 13,300		*7050 *15,500	5700 12,600	11.01 36'8"	
3.0 m 10.0 ft	kg lb					*23 350 *50,100	21 250 45,900	*16 750 *36,150	14 000 30,200	*13 500 *29,250	10 100 21,800	*11 600 *25,200	7700 16,550	9750 20,950	6000 12,900		*7400 *16,200	5400 11,850	11.22 37'6"	
1.5 m 5.0 ft	kg lb					*18 950 *44,900	*18 950 42,250	*18 900 *40,800	13 100 28,200	*14 800 *32,050	9600 20,650	12 050 25,950	7350 15,850	9550 20,550	5850 12,500		*7900 *17,400	5250 11,550	11.23 37'6"	
0 m 0 ft	kg lb					*18 100 *41,750	*18 100 40,550	*20 150 *43,600	12 500 26,900	15 450 33,200	9150 19,750	11 800 25,350	7100 15,300	9400 20,200	5700 12,200		*8700 *19,200	5300 11,600	11.04 36'8"	
-1.5 m -5.0 ft	kg lb					*12 200 *27,450	*12 200 *27,450	*21 700 *49,650	18 600 40,000	*20 450 *44,350	12 150 26,200	15 150 32,600	8900 19,200	11 600 24,950	6950 14,900	9300 5600		9150 20,200	5500 12,150	10.62 35'0"
-3.0 m -10.0 ft	kg lb	*14 100 *31,500	*14 100 *31,500	*17 750 *40,000	*17 750 *40,000	*26 150 *56,650	18 650 40,100	*19 850 *42,950	12 100 26,000	15 050 32,400	8850 19,000	11 550 24,850	6900 14,850				10 000 22,150	6000 13,300	9.96 33'4"	
-4.5 m -15.0 ft	kg lb			*24 450 *55,250	*24 450 *55,250	*23 500 *50,800	18 950 40,700	*18 200 *39,300	12 200 26,300	*14 450 *31,000	8900 19,200	*11 250 *24,850	7000				*11 250 *24,800	7000 15,550	9.01 30'0"	
-6.0 m -20.0 ft	kg lb			*25 150	*25 150	*19 300 *41,250	*19 300 *41,250	*15 100 *32,150	12 550 27,050	*11 500	9200						*11 150 *24,550	9000 20,300	7.63 25'0"	



ISO 10567



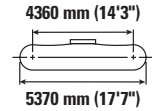
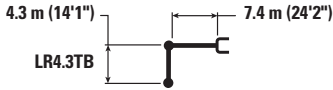
\* Indicates that the load is limited by hydraulic lifting capacity rather than tipping load. The above loads are in compliance with hydraulic excavator lift capacity standard ISO 10567:2007. They do not exceed 87% of hydraulic lifting capacity or 75% of tipping load. Weight of all lifting accessories must be deducted from the above lifting capacities. Lifting capacities are based on the machine standing on a firm, uniform supporting surface. The use of a work tool attachment point to handle/lift objects, could affect the machine lift performance.

Lift capacity stays with ±5% for all available track shoes.

Always refer to the appropriate Operation and Maintenance Manual for specific product information.

# 349 Hydraulic Excavator Specifications

## Long Reach Boom Lift Capacities – Counterweight: 9.0 mt (19,842 lb) – without Bucket, Heavy Lift: On



		1.5 m/5.0 ft		3.0 m/10.0 ft		4.5 m/15.0 ft		6.0 m/20.0 ft		7.5 m/25.0 ft		9.0 m/30.0 ft		10.5 m/35.0 ft		m ft/in		
9.0 m 30.0 ft	kg lb															*7100 *15,750	*7100 *15,750	8.90 29'2"
7.5 m 25.0 ft	kg lb											*9700 *20,750	8400 17,950			*6900 *15,200	*6900 *15,200	9.89 32'6"
6.0 m 20.0 ft	kg lb											*10 100 *22,050	8200 17,600	*7300 6250		*6900 *15,150	6150 13,650	10.57 35'0"
4.5 m 15.0 ft	kg lb							*14 250 *30,700	*14 250 *30,700	*12 100 *26,200	10 550 22,750	*10 800 *23,500	7900 17,000	9800 *19,650	6100 13,100	*7050 *15,500	5600 12,400	11.01 36'8"
3.0 m 10.0 ft	kg lb					*23 350 *50,100	21 000 45,300	*16 750 *36,150	13 800 29,800	*13 500 *29,250	10 000 21,500	*11 600 *25,200	7600 16,300	9600 20,650	5900 12,700	*7400 *16,200	5300 11,650	11.22 37'6"
1.5 m 5.0 ft	kg lb					*18 950 *44,900	*18 950 41,650	*18 900 *40,800	12 900 27,800	*14 800 *32,050	9450 20,350	11 900 25,550	7250 15,600	9400 20,200	5750 12,300	*7900 *17,400	5150 11,350	11.23 37'6"
0 m 0 ft	kg lb					*18 100 *41,750	*18 100 39,950	*20 150 *43,600	12 300 26,500	15 200 32,700	9050 19,450	11 600 24,950	7000 15,050	9250 19,900	5600 12,000	*8600 *18,900	5200 11,400	11.04 36'8"
-1.5 m -5.0 ft	kg lb			*12 200 *27,450	*12 200 *27,450	*21 700 *49,650	18 350 39,400	*20 450 *44,350	12 000 25,800	14 950 32,100	8800 18,900	11 400 24,550	6800 14,700	9150 5500	5500	*9000 *19,850	5400 11,950	10.62 35'0"
-3.0 m -10.0 ft	kg lb	*14 100 *31,500	*14 100 *31,500	*17 750 *40,000	*17 750 *40,000	*26 150 *56,650	18 400 39,500	*19 850 *42,950	11 900 25,650	14 800 31,900	8700 18,700	11 350 24,450	6750 14,600			9850 21,800	5900 13,100	9.96 33'4"
-4.5 m -15.0 ft	kg lb			*24 450 *55,250	*24 450 *55,250	*23 500 *50,800	18 650 40,100	*18 200 *39,300	12 000 25,900	*14 450 *31,000	8750 18,900	*11 250 *24,550	6900			*11 250 *24,800	6900 15,300	9.01 30'0"
-6.0 m -20.0 ft	kg lb			*25 150	*25 150	*19 300 *41,250	19 150 41,250	*15 100 *32,150	12 350 26,650	*11 500	9100					*11 150 *24,550	8900 20,000	7.63 25'0"



ISO 10567



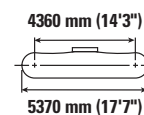
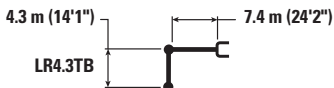
\* Indicates that the load is limited by hydraulic lifting capacity rather than tipping load. The above loads are in compliance with hydraulic excavator lift capacity standard ISO 10567:2007. They do not exceed 87% of hydraulic lifting capacity or 75% of tipping load. Weight of all lifting accessories must be deducted from the above lifting capacities. Lifting capacities are based on the machine standing on a firm, uniform supporting surface. The use of a work tool attachment point to handle/lift objects, could affect the machine lift performance.

Lift capacity stays with ±5% for all available track shoes.

Always refer to the appropriate Operation and Maintenance Manual for specific product information.

# 349 Hydraulic Excavator Specifications

## Long Reach Boom Lift Capacities – Counterweight: 9.0 mt (19,842 lb) – without Bucket, Heavy Lift: On



		1.5 m/5.0 ft		3.0 m/10.0 ft		4.5 m/15.0 ft		6.0 m/20.0 ft		7.5 m/25.0 ft		9.0 m/30.0 ft		10.5 m/35.0 ft		m ft/in		
9.0 m 30.0 ft	kg lb															*7100 *15,750	*7100 *15,750	8.90 29'2"
7.5 m 25.0 ft	kg lb											*9700 *20,750	8300 17,750			*6900 *15,200	*6900 *15,200	9.89 32'6"
6.0 m 20.0 ft	kg lb											*10 100 *22,050	8100 17,400	*7300 6150		*6900 *15,150	6100 13,500	10.57 35'0"
4.5 m 15.0 ft	kg lb							*14 250 *30,700	*14 250 *30,700	*12 100 *26,200	10 450 22,500	*10 800 *23,500	7800 16,800	9700 *19,650	6050 12,900	*7050 *15,500	5550 12,200	11.01 36'8"
3.0 m 10.0 ft	kg lb					*23 350 *50,100	20 750 44,800	*16 750 *36,150	13 650 29,450	*13 500 *29,250	9850 21,250	*11 600 *25,200	7500 16,100	9500 20,350	5850 12,550	*7400 *16,200	5200 11,500	11.22 37'6"
1.5 m 5.0 ft	kg lb					*18 950 *44,900	*18 950 41,150	*18 900 *40,800	12 750 27,500	*14 800 *32,050	9350 20,100	11 750 25,250	7150 15,400	9300 19,950	5650 12,150	*7900 *17,400	5100 11,200	11.23 37'6"
0 m 0 ft	kg lb					*18 100 *41,750	*18 100 39,450	*20 150 *43,600	12 150 26,150	15 000 32,300	8900 19,200	11 450 24,600	6900 14,850	9100 19,600	5500 11,850	8500 18,650	5100 11,250	11.04 36'8"
-1.5 m -5.0 ft	kg lb			*12 200 *27,450	*12 200 *27,450	*21 700 *49,650	18 100 38,900	*20 450 *44,350	11 850 25,450	14 750 31,700	8650 18,650	11 250 24,250	6750 14,500	9050 5450		8900 19,600	5350 11,750	10.62 35'0"
-3.0 m -10.0 ft	kg lb	*14 100 *31,500	*14 100 *31,500	*17 750 *40,000	*17 750 *40,000	*26 150 *56,650	18 150 39,000	*19 850 *42,950	11 750 25,300	14 650 31,450	8600 18,450	11 200 24,150	6700 14,400		9750 21,500	5850 12,900	9.96 33'4"	
-4.5 m -15.0 ft	kg lb			*24 450 *55,250	*24 450 *55,250	*23 500 *50,800	18 450 39,600	*18 200 *39,300	11 850 25,550	*14 450 *31,000	8650 18,650	*11 250 24,150	6800		*11 250 *24,800	6800 15,100	9.01 30'0"	
-6.0 m -20.0 ft	kg lb			*25 150	*25 150	*19 300 *41,250	18 950 40,750	*15 100 *32,150	12 200 26,350	*11 500	8950				*11 150 *24,550	8750 19,700	7.63 25'0"	



ISO 10567



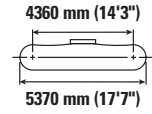
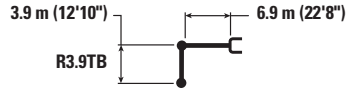
\* Indicates that the load is limited by hydraulic lifting capacity rather than tipping load. The above loads are in compliance with hydraulic excavator lift capacity standard ISO 10567:2007. They do not exceed 87% of hydraulic lifting capacity or 75% of tipping load. Weight of all lifting accessories must be deducted from the above lifting capacities. Lifting capacities are based on the machine standing on a firm, uniform supporting surface. The use of a work tool attachment point to handle/lift objects, could affect the machine lift performance.

Lift capacity stays with ±5% for all available track shoes.

Always refer to the appropriate Operation and Maintenance Manual for specific product information.

# 349 Hydraulic Excavator Specifications

## Reach Boom Lift Capacities – Counterweight: 9.0 mt (19,842 lb) – without Bucket, Heavy Lift: On



Reach	Unit	1.5 m/5.0 ft		3.0 m/10.0 ft		4.5 m/15.0 ft		6.0 m/20.0 ft		7.5 m/25.0 ft		9.0 m/30.0 ft		m ft/in		
		kg	lb	kg	lb	kg	lb	kg	lb	kg	lb	kg	lb	kg	lb	
9.0 m 30.0 ft	kg													*7900	*7900	7.86
	lb													*17,550	*17,550	25'10"
7.5 m 25.0 ft	kg													*7550	*7550	8.97
	lb													*16,650	*16,650	29'2"
6.0 m 20.0 ft	kg									*11 750	11 300	*11 150	8450	*7450	7400	9.72
	lb									*25,650	24,350	*23,000	18,100	*16,450	16,400	31'8"
4.5 m 15.0 ft	kg							*15 000	*15 000	*12 950	10 900	*11 700	8250	*7600	6700	10.19
	lb							*32,350	*32,350	*28,100	23,500	*25,550	17,700	*16,700	14,800	33'4"
3.0 m 10.0 ft	kg					*24 000	21 950	*17 500	14 400	*14 300	10 450	*12 450	7950	*7950	6350	10.42
	lb					*51,600	47,400	*37,850	31,100	*31,050	22,500	*27,100	17,150	*17,450	13,950	34'2"
1.5 m 5.0 ft	kg					*25 800	20 500	*19 700	13 650	*15 600	10 000	12 400	7700	*8550	6200	10.43
	lb					*59,850	44,200	*42,600	29,400	*33,800	21,550	26,650	16,600	*18,750	13,650	34'2"
0 m 0 ft	kg					*23 800	19 800	*21 000	13 100	15 900	9650	12 150	7500	*9450	6300	10.22
	lb					*55,100	42,650	*45,450	28,250	34,250	20,800	26,200	16,150	*20,800	13,850	34'2"
-1.5 m -5.0 ft	kg			*15 300	*15 300	*28 350	19 600	*21 200	12 850	15 700	9450	12 050	7400	10 750	6650	9.77
	lb			*34,450	*34,450	*61,900	42,200	*45,950	27,700	33,750	20,400	25,950	15,900	23,700	14,600	32'6"
-3.0 m -10.0 ft	kg			*22 350	*22 350	*26 750	19 700	*20 350	12 850	15 650	9400	12 050	7400	12 000	7350	9.05
	lb	*38,550	*38,550	*50,350	*50,350	*57,900	42,350	*44,000	27,600	33,700	20,300	26,550	16,300	26,550	16,300	30'0"
-4.5 m -15.0 ft	kg			*31 350	*31 350	*23 400	20 000	*18 100	13 000	*13 950	9550			*12 650	8850	7.98
	lb			*67,750	*67,750	*50,450	43,000	*38,900	28,000	*29,700	20,650			*27,900	19,700	26'8"
-6.0 m -20.0 ft	kg					*17 700	*17 700	*13 350	*13 350					*12 200	*12 200	6.38
	lb					*37,450	*37,450	*27,700	*27,700					*26,650	*26,650	20'10"



ISO 10567



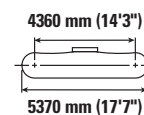
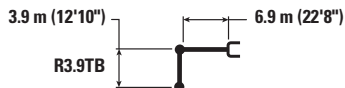
\* Indicates that the load is limited by hydraulic lifting capacity rather than tipping load. The above loads are in compliance with hydraulic excavator lift capacity standard ISO 10567:2007. They do not exceed 87% of hydraulic lifting capacity or 75% of tipping load. Weight of all lifting accessories must be deducted from the above lifting capacities. Lifting capacities are based on the machine standing on a firm, uniform supporting surface. The use of a work tool attachment point to handle/lift objects, could affect the machine lift performance.

Lift capacity stays with ±5% for all available track shoes.

Always refer to the appropriate Operation and Maintenance Manual for specific product information.

# 349 Hydraulic Excavator Specifications

## Reach Boom Lift Capacities – Counterweight: 9.0 mt (19,842 lb) – without Bucket, Heavy Lift: On



Reach	Unit	1.5 m/5.0 ft		3.0 m/10.0 ft		4.5 m/15.0 ft		6.0 m/20.0 ft		7.5 m/25.0 ft		9.0 m/30.0 ft		m ft/in		
		kg	lb	kg	lb	kg	lb	kg	lb	kg	lb	kg	lb	kg	lb	
9.0 m 30.0 ft	kg													*7900	*7900	7.86
	lb													*17,550	*17,550	25'10"
7.5 m 25.0 ft	kg													*7550	*7550	8.97
	lb													*16,650	*16,650	29'2"
6.0 m 20.0 ft	kg									*11 750	11 200	*11 150	8300	*7450	7300	9.72
	lb									*25,650	24,050	*23,000	17,850	*16,450	16,150	31'8"
4.5 m 15.0 ft	kg							*15 000	*15 000	*12 950	10 800	*11 700	8100	*7600	6600	10.19
	lb							*32,350	*32,350	*28,100	23,200	*25,550	17,450	*16,700	14,600	33'4"
3.0 m 10.0 ft	kg					*24 000	21 700	*17 500	14 250	*14 300	10 300	*12 450	7850	*7950	6250	10.42
	lb					*51,600	46,800	*37,850	30,700	*31,050	22,200	*26,900	16,900	*17,450	13,750	34'2"
1.5 m 5.0 ft	kg					*25 800	20 250	*19 700	13 450	*15 600	9850	12 200	7600	*8550	6100	10.43
	lb					*59,850	43,600	*42,600	29,000	*33,800	21,250	*26,300	16,350	*18,750	13,450	34'2"
0 m 0 ft	kg					*23 800	19 550	*21 000	12 950	15 700	9500	12 000	7400	*9450	6200	10.22
	lb					*55,100	42,050	*45,450	27,900	33,750	20,500	25,800	15,900	*20,800	13,600	34'2"
-1.5 m -5.0 ft	kg			*15 300	*15 300	*28 350	19 350	*21 200	12 700	15 450	9300	11 850	7300	10 600	6550	9.77
	lb			*34,450	*34,450	*61,900	41,600	*45,950	27,300	33,300	20,100	25,550	15,700	23,350	14,400	32'6"
-3.0 m -10.0 ft	kg			*22 350	*22 350	*26 750	19 400	*20 350	12 650	15 450	9300	11 900	7300	11 800	7250	9.05
	lb	*38,550	*38,550	*50,350	*50,350	*57,900	41,750	*44,000	27,250	33,200	20,000			26,150	16,050	30'0"
-4.5 m -15.0 ft	kg			*31 350	*31 350	*23 400	19 700	*18 100	12 800	*13 950	9450			*12 650	8750	7.98
	lb			*67,750	*67,750	*50,450	42,400	*38,900	27,600	*29,700	20,400			*27,900	19,450	26'8"
-6.0 m -20.0 ft	kg					*17 700	*17 700	*13 350	13 250					*12 200	*12 200	6.38
	lb					*37,450	*37,450	*27,700	*27,700					*26,650	*26,650	20'10"



ISO 10567



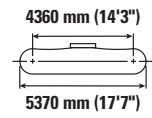
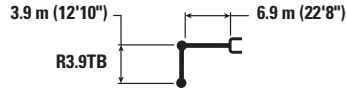
\* Indicates that the load is limited by hydraulic lifting capacity rather than tipping load. The above loads are in compliance with hydraulic excavator lift capacity standard ISO 10567:2007. They do not exceed 87% of hydraulic lifting capacity or 75% of tipping load. Weight of all lifting accessories must be deducted from the above lifting capacities. Lifting capacities are based on the machine standing on a firm, uniform supporting surface. The use of a work tool attachment point to handle/lift objects, could affect the machine lift performance.

Lift capacity stays with ±5% for all available track shoes.

Always refer to the appropriate Operation and Maintenance Manual for specific product information.

# 349 Hydraulic Excavator Specifications

## Reach Boom Lift Capacities – Counterweight: 9.0 mt (19,842 lb) – without Bucket, Heavy Lift: On



		1.5 m/5.0 ft		3.0 m/10.0 ft		4.5 m/15.0 ft		6.0 m/20.0 ft		7.5 m/25.0 ft		9.0 m/30.0 ft		m ft/in		
9.0 m 30.0 ft	kg lb									<b>*18,750</b>	<b>*18,750</b>			<b>*7900</b> <b>*17,550</b>	<b>*7900</b> <b>*17,550</b>	7.86 25'10"
7.5 m 25.0 ft	kg lb													<b>*7550</b> <b>*16,650</b>	<b>*7550</b> <b>*16,650</b>	8.97 29'2"
6.0 m 20.0 ft	kg lb									<b>*11 750</b> <b>*25,650</b>	<b>11 050</b> <b>23,800</b>	<b>*11 150</b> <b>*23,000</b>	<b>8250</b> <b>17,650</b>	<b>*7450</b> <b>*16,450</b>	<b>7200</b> <b>16,000</b>	9.72 31'8"
4.5 m 15.0 ft	kg lb							<b>*15 000</b> <b>*32,350</b>	<b>15 000</b> <b>32,300</b>	<b>*12 950</b> <b>*28,100</b>	<b>10 650</b> <b>22,950</b>	<b>*11 700</b> <b>*25,550</b>	<b>8050</b> <b>17,250</b>	<b>*7600</b> <b>*16,700</b>	<b>6550</b> <b>14,450</b>	10.19 33'4"
3.0 m 10.0 ft	kg lb					<b>*24 000</b> <b>*51,600</b>	<b>21 450</b> <b>46,300</b>	<b>*17 500</b> <b>*37,850</b>	<b>14 100</b> <b>30,400</b>	<b>*14 300</b> <b>*31,050</b>	<b>10 200</b> <b>21,950</b>	<b>12 350</b> <b>26,550</b>	<b>7750</b> <b>16,700</b>	<b>*7950</b> <b>*17,450</b>	<b>6150</b> <b>13,600</b>	10.42 34'2"
1.5 m 5.0 ft	kg lb					<b>*25 800</b> <b>*59,850</b>	<b>20 000</b> <b>43,100</b>	<b>*19 700</b> <b>*42,600</b>	<b>13 300</b> <b>28,700</b>	<b>*15 600</b> <b>*33,800</b>	<b>9750</b> <b>21,000</b>	<b>12 050</b> <b>25,950</b>	<b>7500</b> <b>16,150</b>	<b>*8550</b> <b>*18,750</b>	<b>6050</b> <b>13,250</b>	10.43 34'2"
0 m 0 ft	kg lb					<b>*23 800</b> <b>*55,100</b>	<b>19 300</b> <b>41,550</b>	<b>*21 000</b> <b>*45,450</b>	<b>12 800</b> <b>27,550</b>	<b>15 500</b> <b>33,350</b>	<b>9400</b> <b>20,250</b>	<b>11 850</b> <b>25,500</b>	<b>7300</b> <b>15,700</b>	<b>*9450</b> <b>*20,800</b>	<b>6100</b> <b>13,450</b>	10.22 34'2"
-1.5 m -5.0 ft	kg lb			<b>*15 300</b> <b>*34,450</b>	<b>*15 300</b> <b>*34,450</b>	<b>*28 350</b> <b>*61,900</b>	<b>19 100</b> <b>41,100</b>	<b>*21 200</b> <b>*45,950</b>	<b>12 550</b> <b>27,000</b>	<b>15 300</b> <b>32,850</b>	<b>9200</b> <b>19,850</b>	<b>11 700</b> <b>25,200</b>	<b>7200</b> <b>15,500</b>	<b>*10 450</b> <b>*23,050</b>	<b>6450</b> <b>14,200</b>	9.77 32'6"
-3.0 m -10.0 ft	kg lb	<b>*38,550</b>	<b>*38,550</b>	<b>*22 350</b> <b>*50,350</b>	<b>*22 350</b> <b>*50,350</b>	<b>*26 750</b> <b>*57,900</b>	<b>19 200</b> <b>41,250</b>	<b>*20 350</b> <b>*44,000</b>	<b>12 500</b> <b>26,900</b>	<b>15 250</b> <b>32,750</b>	<b>9150</b> <b>19,750</b>	<b>11 750</b> <b>25,800</b>	<b>7200</b> <b>15,850</b>	<b>*11 650</b> <b>*25,800</b>	<b>7150</b> <b>15,850</b>	9.05 30'0"
-4.5 m -15.0 ft	kg lb			<b>*31 350</b> <b>*67,750</b>	<b>*31 350</b> <b>*67,750</b>	<b>*23 400</b> <b>*50,450</b>	<b>19 500</b> <b>41,950</b>	<b>*18 100</b> <b>*38,900</b>	<b>12 650</b> <b>27,300</b>	<b>*13 950</b> <b>*29,700</b>	<b>9300</b> <b>20,150</b>			<b>*12 650</b> <b>*27,900</b>	<b>8600</b> <b>19,200</b>	7.98 26'8"
-6.0 m -20.0 ft	kg lb					<b>*17 700</b> <b>*37,450</b>	<b>*17 700</b> <b>*37,450</b>	<b>*13 350</b> <b>*27,700</b>	<b>13 100</b> <b>*27,700</b>					<b>*12 200</b> <b>*26,650</b>	<b>12 050</b> <b>*26,650</b>	6.38 20'10"



ISO 10567



\* Indicates that the load is limited by hydraulic lifting capacity rather than tipping load. The above loads are in compliance with hydraulic excavator lift capacity standard ISO 10567:2007. They do not exceed 87% of hydraulic lifting capacity or 75% of tipping load. Weight of all lifting accessories must be deducted from the above lifting capacities. Lifting capacities are based on the machine standing on a firm, uniform supporting surface. The use of a work tool attachment point to handle/lift objects, could affect the machine lift performance.

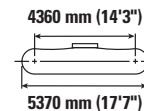
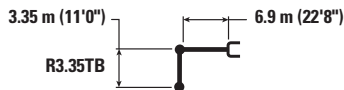
Lift capacity stays with ±5% for all available track shoes.

Always refer to the appropriate Operation and Maintenance Manual for specific product information.



# 349 Hydraulic Excavator Specifications

## Reach Boom Lift Capacities – Counterweight: 9.0 mt (19,842 lb) – without Bucket, Heavy Lift: On



		3.0 m/10.0 ft		4.5 m/15.0 ft		6.0 m/20.0 ft		7.5 m/25.0 ft		9.0 m/30.0 ft		m ft/in		
9.0 m 30.0 ft	kg lb											*9000 *20,050	*9000 *20,050	7.30 24'2"
7.5 m 25.0 ft	kg lb							*12 050 *26,450	11 400 24,450			*8500 *18,750	*8500 *18,750	8.48 27'6"
6.0 m 20.0 ft	kg lb							*12 600 *27,500	11 200 24,050	*10 750 *20,250	8300 17,850	*8350 *18,350	7900 17,550	9.27 30'10"
4.5 m 15.0 ft	kg lb			*20 900 *44,800	*20 900 *44,800	*16 150 *34,850	15 100 32,500	*13 700 *29,750	10 800 23,250	*12 350 *26,950	8150 17,550	*8450 *18,550	7150 15,800	9.77 32'6"
3.0 m 10.0 ft	kg lb			*25 950 *55,750	21 450 46,300	*18 550 *40,050	14 250 30,700	*15 000 *32,500	10 350 22,350	12 650 27,200	7950 17,100	*8800 *19,350	6750 14,850	10.01 33'4"
1.5 m 5.0 ft	kg lb			*18 600 *41,200	*18 600 *41,200	*20 450 *44,200	13 550 29,250	*16 100 *34,900	9950 21,500	12 400 26,650	7700 16,600	*9400 *20,700	6600 14,550	10.02 33'4"
0 m 0 ft	kg lb			*20 950 *46,650	19 850 42,750	*21 350 *46,250	13 150 28,300	15 950 34,300	9700 20,900	12 200 26,300	7550 16,250	*10 400 *22,950	6750 14,800	9.80 32'6"
-1.5 m -5.0 ft	kg lb	*14 900 *33,650	*14 900 *33,650	*28 000 *60,750	19 850 42,600	*21 200 *45,850	12 950 27,950	15 800 33,950	9550 20,600	12 150 26,150	7500 16,150	11 550 25,500	7150 15,800	9.33 30'10"
-3.0 m -10.0 ft	kg lb	*23 850 *53,850	*23 850 *53,850	*25 650 *55,550	20 000 42,950	*19 850 *42,900	13 000 28,000	*15 600 *33,600	9550 20,650			*12 900 *28,450	8050 17,850	8.57 28'4"
-4.5 m -15.0 ft	kg lb	*27 750 *59,900	*27 750 *59,900	*21 650 *46,650	20 350 43,800	*16 900 *36,200	13 250 28,550					*12 750 *27,950	9950 22,200	7.43 24'2"



ISO 10567



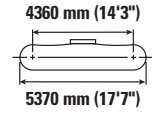
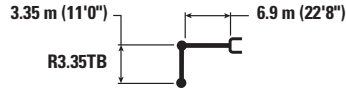
\* Indicates that the load is limited by hydraulic lifting capacity rather than tipping load. The above loads are in compliance with hydraulic excavator lift capacity standard ISO 10567:2007. They do not exceed 87% of hydraulic lifting capacity or 75% of tipping load. Weight of all lifting accessories must be deducted from the above lifting capacities. Lifting capacities are based on the machine standing on a firm, uniform supporting surface. The use of a work tool attachment point to handle/lift objects, could affect the machine lift performance.

Lift capacity stays with ±5% for all available track shoes.

Always refer to the appropriate Operation and Maintenance Manual for specific product information.

# 349 Hydraulic Excavator Specifications

## Reach Boom Lift Capacities – Counterweight: 9.0 mt (19,842 lb) – without Bucket, Heavy Lift: On



		3.0 m/10.0 ft		4.5 m/15.0 ft		6.0 m/20.0 ft		7.5 m/25.0 ft		9.0 m/30.0 ft		m ft/in		
9.0 m 30.0 ft	kg lb											*9000 *20,050	*9000 *20,050	7.30 24'2"
7.5 m 25.0 ft	kg lb							*12 050 *26,450	11 250 24,150			*8500 *18,750	*8500 *18,750	8.48 27'6"
6.0 m 20.0 ft	kg lb							*12 600 *27,500	11 050 23,750	*10 750 *20,250	8200 17,600	*8350 *18,350	7800 17,300	9.27 30'10"
4.5 m 15.0 ft	kg lb			*20 900 *44,800	*20 900 *44,800	*16 150 *34,850	14 900 32,100	*13 700 *29,750	10 650 22,950	*12 350 *26,950	8050 17,300	*8450 *18,550	7050 15,550	9.77 32'6"
3.0 m 10.0 ft	kg lb			*25 950 *55,750	21 200 45,700	*18 550 *40,050	14 050 30,350	*15 000 *32,500	10 250 22,050	12 450 26,800	7850 16,850	*8800 *19,350	6650 14,650	10.01 33'4"
1.5 m 5.0 ft	kg lb			*18 600 *44,500	*18 600 *43,100	*20 450 *44,200	13 350 28,850	16 050 34,500	9850 21,200	12 200 26,300	7600 16,350	*9400 *20,700	6500 14,300	10.02 33'4"
0 m 0 ft	kg lb			*20 950 *48,650	19 600 42,150	*21 350 *46,250	12 950 27,900	15 700 33,800	9550 20,600	12 050 25,900	7450 16,050	*10 400 *22,950	6650 14,600	9.80 32'6"
-1.5 m -5.0 ft	kg lb	*14 900 *33,650	*14 900 *33,650	*28 000 *60,750	19 550 42,000	*21 200 *45,850	12 800 27,550	15 550 33,450	9400 20,300	11 950 25,800	7400 15,900	*11 400 *25,150	7050 15,550	9.33 30'10"
-3.0 m -10.0 ft	kg lb	*23 850 *53,850	*23 850 *53,850	*25 650 *55,550	19 700 42,350	*19 850 *42,900	12 800 27,600	15 600 33,550	9450 20,350			12 900 *28,450	7950 17,600	8.57 28'4"
-4.5 m -15.0 ft	kg lb	*27 750 *59,900	*27 750 *59,900	*21 650 *46,650	20 100 43,200	*16 900 *36,200	13 050 28,200					*12 750 *27,950	9800 21,900	7.43 24'2"



ISO 10567



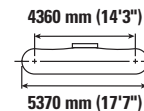
\* Indicates that the load is limited by hydraulic lifting capacity rather than tipping load. The above loads are in compliance with hydraulic excavator lift capacity standard ISO 10567:2007. They do not exceed 87% of hydraulic lifting capacity or 75% of tipping load. Weight of all lifting accessories must be deducted from the above lifting capacities. Lifting capacities are based on the machine standing on a firm, uniform supporting surface. The use of a work tool attachment point to handle/lift objects, could affect the machine lift performance.

Lift capacity stays with ±5% for all available track shoes.

Always refer to the appropriate Operation and Maintenance Manual for specific product information.

# 349 Hydraulic Excavator Specifications

## Reach Boom Lift Capacities – Counterweight: 9.0 mt (19,842 lb) – without Bucket, Heavy Lift: On



Reach Boom Configuration	3.0 m/10.0 ft		4.5 m/15.0 ft		6.0 m/20.0 ft		7.5 m/25.0 ft		9.0 m/30.0 ft		m ft/in			
	kg lb	kg lb	kg lb	kg lb	kg lb	kg lb	kg lb	kg lb	kg lb	kg lb	kg lb	kg lb		
9.0 m 30.0 ft											*9000 *20,050	*9000 *20,050	7.30 24'2"	
7.5 m 25.0 ft							*12 050 *26,450	11 150 23,900			*8500 *18,750	*8500 *18,750	8.48 27'6"	
6.0 m 20.0 ft							*12 600 *27,500	10 950 23,500	*10 750 *20,250	8100 17,400	*8350 *18,350	7700 17,100	9.27 30'10"	
4.5 m 15.0 ft			*20 900 *44,800	*20 900 *44,800	*16 150 *34,850	14 750 31,800	*13 700 *29,750	10 550 22,700	*12 350 *26,950	7950 17,100	*8450 *18,550	6950 15,400	9.77 32'6"	
3.0 m 10.0 ft			*25 950 *55,750	20 950 45,200	*18 550 *40,050	13 900 30,000	*15 000 *32,500	10 100 21,800	12 300 26,450	7750 16,650	*8800 *19,350	6550 14,450	10.01 33'4"	
1.5 m 5.0 ft			*18 600 *44,500	*18 600 *42,600	*20 450 *44,200	13 200 28,500	15 850 *34,100	9700 20,950	12 050 25,950	7500 16,150	*9400 *20,700	6450 14,150	10.02 33'4"	
0 m 0 ft			*20 950 *48,650	19 350 41,650	*21 350 *46,250	12 800 27,600	15 500 33,400	9450 20,350	11 900 25,600	7350 15,850	*10 400 *22,950	6550 14,400	9.80 32'6"	
-1.5 m -5.0 ft		*14 900 *33,650	*14 900 *33,650	*28 000 *60,750	19 300 41,550	*21 200 *45,850	12 650 27,200	15 350 33,050	9300 20,050	11 800 25,450	7300 15,700	11 250 24,800	6950 15,350	9.33 30'10"
-3.0 m -10.0 ft		*23 850 *53,850	*23 850 *53,850	*25 650 *55,550	19 500 41,900	*19 850 *42,900	12 650 27,300	15 400 33,100	9300 20,100			12 750 28,200	7850 17,350	8.57 28'4"
-4.5 m -15.0 ft		*27 750 *59,900	*27 750 *59,900	*21 650 *46,650	19 850 42,750	*16 900 *36,200	12 900 27,850					*12 750 *27,950	9700 21,650	7.43 24'2"



ISO 10567



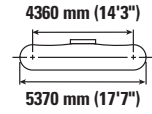
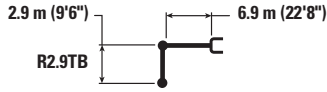
\* Indicates that the load is limited by hydraulic lifting capacity rather than tipping load. The above loads are in compliance with hydraulic excavator lift capacity standard ISO 10567:2007. They do not exceed 87% of hydraulic lifting capacity or 75% of tipping load. Weight of all lifting accessories must be deducted from the above lifting capacities. Lifting capacities are based on the machine standing on a firm, uniform supporting surface. The use of a work tool attachment point to handle/lift objects, could affect the machine lift performance.

Lift capacity stays with ±5% for all available track shoes.

Always refer to the appropriate Operation and Maintenance Manual for specific product information.

# 349 Hydraulic Excavator Specifications

## Reach Boom Lift Capacities – Counterweight: 9.0 mt (19,842 lb) – without Bucket, Heavy Lift: On



Reach Boom	Unit	3.0 m/10.0 ft		4.5 m/15.0 ft		6.0 m/20.0 ft		7.5 m/25.0 ft		9.0 m/30.0 ft		m ft/in		
9.0 m 30.0 ft	kg lb											*10 750 *23,900	*10 750 *23,900	6.72 21'8"
7.5 m 25.0 ft	kg lb							*12 850 *27,950	11 250 24,100			*10 050 *22,200	*10 050 *22,200	7.99 26'8"
6.0 m 20.0 ft	kg lb					*14 850 *32,150	*14 850 *32,150	*13 300 *28,950	11 050 23,800			*9850 *21,700	8500 18,850	8.83 29'2"
4.5 m 15.0 ft	kg lb			*22 550 *48,300	*22 550 *48,300	*17 000 *36,700	14 900 32,100	*14 300 *31,050	10 700 23,050	12 800 *27,350	8100 17,400	*10 000 *22,000	7650 16,850	9.34 30'10"
3.0 m 10.0 ft	kg lb			*19 150 *50,000	*19 150 *45,300	*19 300 *41,600	14 100 30,400	*15 500 *33,550	10 300 22,200	12 600 *27,100	7900 17,000	*10 450 *22,950	7150 15,800	9.60 31'8"
1.5 m 5.0 ft	kg lb			*13 650 *33,550	*13 650 *33,550	*20 950 *45,250	13 450 29,050	16 200 34,900	9950 21,400	12 400 26,650	7700 16,600	*11 250 *24,700	7050 15,500	9.61 31'8"
0 m 0 ft	kg lb			*19 450 *45,400	*19 450 *42,800	*21 500 *46,550	13 150 28,300	15 950 34,300	9700 20,900	12 250 26,350	7600 16,350	11 550 25,450	7200 15,800	9.38 30'10"
-1.5 m -5.0 ft	kg lb	*15 000 *34,100	*15 000 *34,100	*27 200 *59,100	19 950 42,900	*20 950 *45,400	13 050 28,050	15 850 34,100	9600 20,700			12 450 27,500	7700 17,000	8.88 29'2"
-3.0 m -10.0 ft	kg lb	*26 450 *59,800	*26 450 *59,800	*24 450 *53,000	20 200 43,350	*19 250 *41,550	13 100 28,250	*15 050 *32,250	9700 20,900			*13 400 *29,550	8800 19,550	8.08 26'8"
-4.5 m -15.0 ft	kg lb			*19 900 *42,750	*19 900 *42,750	*15 600 *33,200	13 450 29,000					*12 900 *28,350	11 250 25,200	6.86 22'6"



ISO 10567



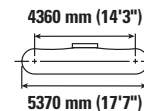
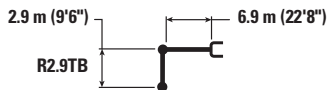
\* Indicates that the load is limited by hydraulic lifting capacity rather than tipping load. The above loads are in compliance with hydraulic excavator lift capacity standard ISO 10567:2007. They do not exceed 87% of hydraulic lifting capacity or 75% of tipping load. Weight of all lifting accessories must be deducted from the above lifting capacities. Lifting capacities are based on the machine standing on a firm, uniform supporting surface. The use of a work tool attachment point to handle/lift objects, could affect the machine lift performance.

Lift capacity stays with ±5% for all available track shoes.

Always refer to the appropriate Operation and Maintenance Manual for specific product information.

# 349 Hydraulic Excavator Specifications

## Reach Boom Lift Capacities – Counterweight: 9.0 mt (19,842 lb) – without Bucket, Heavy Lift: On



		3.0 m/10.0 ft		4.5 m/15.0 ft		6.0 m/20.0 ft		7.5 m/25.0 ft		9.0 m/30.0 ft		m ft/in		
9.0 m 30.0 ft	kg lb											*10 750 *23,900	*10 750 *23,900	6.72 21'8"
7.5 m 25.0 ft	kg lb							*12 850 *27,950	11 100 23,800			*10 050 *22,200	9950 *22,200	7.99 26'8"
6.0 m 20.0 ft	kg lb					*14 850 *32,150	*14 850 *32,150	*13 300 *28,950	10 950 23,500			*9850 *21,700	8400 18,600	8.83 29'2"
4.5 m 15.0 ft	kg lb			*22 550 *48,300	22 550 *48,300	*17 000 *36,700	14 700 *31,700	*14 300 *31,050	10 550 22,750	12 650 27,150	8000 17,150	*10 000 *22,000	7500 16,600	9.34 30'10"
3.0 m 10.0 ft	kg lb			*19 150 *50,000	*19 150 *44,700	*19 300 *41,600	13 900 30,000	*15 500 *33,550	10 150 21,900	12 400 26,700	7800 16,750	*10 450 *22,950	7050 15,600	9.60 31'8"
1.5 m 5.0 ft	kg lb			*13 650 *33,550	*13 650 *33,550	*20 950 *45,250	13 300 28,650	16 000 34,400	9800 21,100	12 200 26,250	7600 16,350	11 100 24,450	6950 15,250	9.61 31'8"
0 m 0 ft	kg lb			*19 450 *45,400	*19 450 *42,200	*21 500 *46,550	12 950 27,900	15 700 33,800	9550 20,600	12 050 26,000	7500 16,100	11 400 25,100	7100 15,600	9.38 30'10"
-1.5 m -5.0 ft	kg lb	*15 000 *34,100	*15 000 *34,100	*27 200 *59,100	19 700 42,300	*20 950 *45,400	12 850 27,650	15 600 33,600	9450 20,400			12 300 27,100	7600 16,750	8.88 29'2"
-3.0 m -10.0 ft	kg lb	*26 450 *59,800	*26 450 *59,800	*24 450 *53,000	19 900 42,800	*19 250 *41,550	12 950 27,850	*15 050 *32,250	9550 20,600			*13 400 *29,550	8700 19,250	8.08 26'8"
-4.5 m -15.0 ft	kg lb			*19 900 *42,750	*19 900 *42,750	*15 600 *33,200	13 250 28,600					*12 900 *28,350	11 100 24,850	6.86 22'6"



ISO 10567



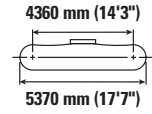
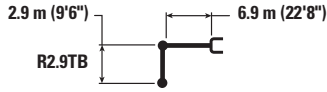
\* Indicates that the load is limited by hydraulic lifting capacity rather than tipping load. The above loads are in compliance with hydraulic excavator lift capacity standard ISO 10567:2007. They do not exceed 87% of hydraulic lifting capacity or 75% of tipping load. Weight of all lifting accessories must be deducted from the above lifting capacities. Lifting capacities are based on the machine standing on a firm, uniform supporting surface. The use of a work tool attachment point to handle/lift objects, could affect the machine lift performance.

Lift capacity stays with ±5% for all available track shoes.

Always refer to the appropriate Operation and Maintenance Manual for specific product information.

# 349 Hydraulic Excavator Specifications

## Reach Boom Lift Capacities – Counterweight: 9.0 mt (19,842 lb) – without Bucket, Heavy Lift: On



		3.0 m/10.0 ft		4.5 m/15.0 ft		6.0 m/20.0 ft		7.5 m/25.0 ft		9.0 m/30.0 ft		m ft/in		
9.0 m 30.0 ft	kg lb											*10 750 *23,900	*10 750 *23,900	6.72 21'8"
7.5 m 25.0 ft	kg lb							*12 850 *27,950	11 000 23,550			*10 050 *22,200	9850 22,100	7.99 26'8"
6.0 m 20.0 ft	kg lb					*14 850 *32,150	*14 850 *32,150	*13 300 *28,950	10 800 23,250			*9850 *21,700	8300 18,400	8.83 29'2"
4.5 m 15.0 ft	kg lb			*22 550 *48,300	22 300 48,200	*17 000 *36,700	14 550 31,350	*14 300 *31,050	10 450 22,500	12 500 26,800	7900 16,950	*10 000 *22,000	7450 16,400	9.34 30'10"
3.0 m 10.0 ft	kg lb			*19 150 *50,000	*19 150 44,200	*19 300 *41,600	13 750 29,650	*15 500 *33,550	10 050 21,650	12 250 26,350	7700 16,550	*10 450 *22,950	7000 15,400	9.60 31'8"
1.5 m 5.0 ft	kg lb			*13 650 *33,550	*13 650 *33,550	*20 950 *45,250	13 150 28,300	15 800 34,000	9700 20,850	12 050 25,950	7500 16,150	10 950 24,100	6850 15,050	9.61 31'8"
0 m 0 ft	kg lb			*19 450 *45,400	19 400 41,700	*21 500 *46,550	12 800 27,550	15 500 33,400	9450 20,350	11 900 25,650	7400 15,900	11 250 24,750	7000 15,400	9.38 30'10"
-1.5 m -5.0 ft	kg lb	*15 000 *34,100	*15 000 *34,100	*27 200 *59,100	19 450 41,800	*20 950 *45,400	12 700 27,350	15 400 33,150	9350 20,150			12 100 26,750	7500 16,550	8.88 29'2"
-3.0 m -10.0 ft	kg lb	*26 450 *59,800	*26 450 *59,800	*24 450 *53,000	19 650 42,300	*19 250 *41,550	12 800 27,550	*15 050 *32,250	9450 20,350			*13 400 *29,550	8600 19,000	8.08 26'8"
-4.5 m -15.0 ft	kg lb			*19 900 *42,750	*19 900 *42,750	*15 600 *33,200	13 100 28,300					*12 900 *28,350	10 950 24,550	6.86 22'6"



ISO 10567



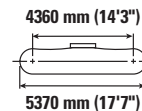
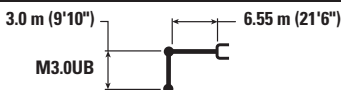
\* Indicates that the load is limited by hydraulic lifting capacity rather than tipping load. The above loads are in compliance with hydraulic excavator lift capacity standard ISO 10567:2007. They do not exceed 87% of hydraulic lifting capacity or 75% of tipping load. Weight of all lifting accessories must be deducted from the above lifting capacities. Lifting capacities are based on the machine standing on a firm, uniform supporting surface. The use of a work tool attachment point to handle/lift objects, could affect the machine lift performance.

Lift capacity stays with ±5% for all available track shoes.

Always refer to the appropriate Operation and Maintenance Manual for specific product information.

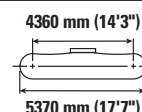
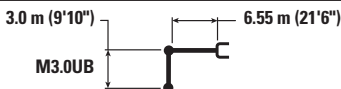
# 349 Hydraulic Excavator Specifications

## Mass Boom Lift Capacities – Counterweight: 9.0 mt (19,842 lb) – without Bucket, Heavy Lift: On



		3.0 m/10.0 ft		4.5 m/15.0 ft		6.0 m/20.0 ft		7.5 m/25.0 ft		9.0 m/30.0 ft		m ft/in		
7.5 m 25.0 ft	kg lb							*11 500	10 950			*9950 *22,050	*9950 *22,050	7.67 25'0"
6.0 m 20.0 ft	kg lb							*13 000 *28,400	10 850 23,300			*9700 *21,400	8700 19,300	8.54 28'4"
4.5 m 15.0 ft	kg lb			*20 900 *44,850	*20 900 *44,850	*16 200 *35,100	14 750 31,850	*13 900 *30,150	10 500 22,550	*10 750	7800	*9800 *21,600	7700 17,000	9.07 30'0"
3.0 m 10.0 ft	kg lb			*25 700 *55,200	21 100 45,500	*18 450 *39,900	13 900 30,000	*15 000 *32,550	10 050 21,600	12 300 26,450	7600 16,350	*10 250 *22,500	7200 15,800	9.33 30'10"
1.5 m 5.0 ft	kg lb			*22 850 *55,000	19 850 42,800	*20 200 *43,750	13 200 28,450	15 950 34,300	9650 20,750	12 100 26,000	7400 15,900	*11 050 *24,250	7000 15,400	9.34 30'10"
0 m 0 ft	kg lb			*25 950 *60,450	19 450 41,800	*20 950 *45,400	12 750 27,500	15 650 33,650	9350 20,150	11 950	7250	11 750 25,900	7150 15,750	9.11 30'0"
-1.5 m -5.0 ft	kg lb	*17 850 *40,400	*17 850 *40,400	*27 150 *58,950	19 400 41,650	*20 550 *44,500	12 600 27,150	15 500 33,350	9250 19,900			12 750 28,100	7700 17,000	8.60 28'4"
-3.0 m -10.0 ft	kg lb	*29 400 *66,600	*29 400 *66,600	*24 350 *52,700	19 600 42,150	*18 750 *40,500	12 700 27,350	*14 350 *30,500	9350 20,200			*13 500 *29,750	8950 19,850	7.76 25'10"
-4.5 m -15.0 ft	kg lb			*19 350 *41,450	*19 350 *41,450	*14 650 *30,850	13 100 28,250					*12 950 *28,400	11 800 26,500	6.48 21'8"

## Mass Boom Lift Capacities – Counterweight: 9.0 mt (19,842 lb) – without Bucket, Heavy Lift: On



		3.0 m/10.0 ft		4.5 m/15.0 ft		6.0 m/20.0 ft		7.5 m/25.0 ft		9.0 m/30.0 ft		m ft/in		
7.5 m 25.0 ft	kg lb							*11 500	10 850			*9950 *22,050	*9950 *22,050	7.67 25'0"
6.0 m 20.0 ft	kg lb							*13 000 *28,400	10 700 23,000			*9700 *21,400	8550 19,050	8.54 28'4"
4.5 m 15.0 ft	kg lb			*20 900 *44,850	*20 900 *44,850	*16 200 *35,100	14 600 31,450	*13 900 *30,150	10 350 22,250	*10 750	7700	*9800 *21,600	7600 16,750	9.07 30'0"
3.0 m 10.0 ft	kg lb			*25 700 *55,200	20 800 44,900	*18 450 *39,900	13 700 29,600	*15 000 *32,550	9900 21,300	12 150 26,100	7500 16,100	*10 250 *22,500	7050 15,600	9.33 30'10"
1.5 m 5.0 ft	kg lb			*22 850 *55,000	19 600 42,200	*20 200 *43,750	13 000 28,050	15 750 33,850	9500 20,450	11 900 25,650	7300 15,700	*11 050 *24,250	6900 15,200	9.34 30'10"
0 m 0 ft	kg lb			*25 950 *60,450	19 150 41,200	*20 950 *45,400	12 600 27,100	15 400 33,150	9200 19,850	11 750	7150	11 600 25,500	7050 15,500	9.11 30'0"
-1.5 m -5.0 ft	kg lb	*17 850 *40,400	*17 850 *40,400	*27 150 *58,950	19 100 41,100	*20 550 *44,500	12 450 26,750	15 300 32,900	9100 19,600			12 550 27,700	7600 16,750	8.60 28'4"
-3.0 m -10.0 ft	kg lb	*29 400 *66,600	*29 400 *66,600	*24 350 *52,700	19 350 41,550	*18 750 *40,500	12 500 26,950	*14 350 *30,500	9200 19,900			*13 500 *29,750	8800 19,550	7.76 25'10"
-4.5 m -15.0 ft	kg lb			*19 350 *41,450	*19 350 *41,450	*14 650 *30,850	12 900 27,850					*12 950 *28,400	11 650 26,100	6.48 21'8"



ISO 10567



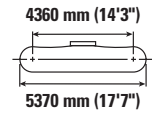
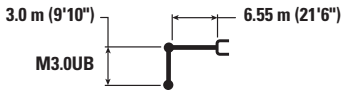
\* Indicates that the load is limited by hydraulic lifting capacity rather than tipping load. The above loads are in compliance with hydraulic excavator lift capacity standard ISO 10567:2007. They do not exceed 87% of hydraulic lifting capacity or 75% of tipping load. Weight of all lifting accessories must be deducted from the above lifting capacities. Lifting capacities are based on the machine standing on a firm, uniform supporting surface. The use of a work tool attachment point to handle/lift objects, could affect the machine lift performance.

Lift capacity stays with ±5% for all available track shoes.

Always refer to the appropriate Operation and Maintenance Manual for specific product information.

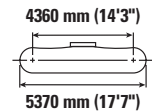
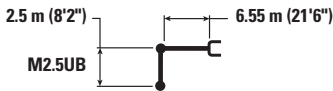
# 349 Hydraulic Excavator Specifications

## Mass Boom Lift Capacities – Counterweight: 9.0 mt (19,842 lb) – without Bucket, Heavy Lift: On



		3.0 m/10.0 ft		4.5 m/15.0 ft		6.0 m/20.0 ft		7.5 m/25.0 ft		9.0 m/30.0 ft		m ft/in		
7.5 m 25.0 ft	kg lb							*11 500	10 700			*9950 *22,050	*9950 *22,050	7.67 25'0"
6.0 m 20.0 ft	kg lb							*13 000 *28,400	10 600 22,750			*9700 *21,400	8450 18,850	8.54 28'4"
4.5 m 15.0 ft	kg lb			*20 900 *44,850	*20 900 *44,850	*16 200 *35,100	14 450 31,100	*13 900 *30,150	10 250 22,000	*10 750 7600		*9800 *21,600	7500 16,550	9.07 30'0"
3.0 m 10.0 ft	kg lb			*25 700 *55,200	20 600 44,400	*18 450 *39,900	13 550 29,250	*15 000 *32,550	9800 21,050	12 000 25,750	7400 15,900	*10 250 *22,500	7000 15,400	9.33 30'10"
1.5 m 5.0 ft	kg lb			*22 850 *55,000	19 350 41,700	*20 200 *43,750	12 850 27,700	15 550 33,400	9400 20,200	11 750 25,300	7200 15,500	*11 050 *24,250	6800 15,000	9.34 30'10"
0 m 0 ft	kg lb			*25 950 *60,450	18 950 40,700	*20 950 *45,400	12 450 26,800	15 200 32,750	9100 19,600	11 600 7050		11 450 25,200	6950 15,300	9.11 30'0"
-1.5 m -5.0 ft	kg lb	*17 850 *40,400	*17 850 *40,400	*27 150 *58,950	18 900 40,600	*20 550 *44,500	12 300 26,450	15 100 32,450	9000 19,350			12 400 27,350	7500 16,550	8.60 28'4"
-3.0 m -10.0 ft	kg lb	*29 400 *66,600	*29 400 *66,600	*24 350 *52,700	19 100 41,050	*18 750 *40,500	12 350 26,600	*14 350 *30,500	9100 19,650			*13 500 *29,750	8700 19,300	7.76 25'10"
-4.5 m -15.0 ft	kg lb			*19 350 *41,450	*19 350 *41,450	*14 650 *30,850	12 750 27,550					*12 950 *28,400	11 500 25,800	6.48 21'8"

## Mass Boom Lift Capacities – Counterweight: 9.0 mt (19,842 lb) – without Bucket, Heavy Lift: On



		3.0 m/10.0 ft		4.5 m/15.0 ft		6.0 m/20.0 ft		7.5 m/25.0 ft		m ft/in		
7.5 m 25.0 ft	kg lb									*13 050 *28,850	11 850 26,750	7.11 23'4"
6.0 m 20.0 ft	kg lb					*15 300 *33,250	*15 300 33,050	*13 850 *30,300	10 750 23,050	*12 650 *27,900	9550 21,250	8.03 26'8"
4.5 m 15.0 ft	kg lb			*22 750 *48,750	22 500 48,650	*17 200 *37,200	14 600 31,500	*14 600 *31,750	10 400 22,450	*12 850 *28,200	8400 18,550	8.60 28'4"
3.0 m 10.0 ft	kg lb			*58,250	44,550	*19 300 *41,700	13 800 29,750	*15 600 *33,800	10 000 21,600	12 600 27,800	7800 17,150	8.88 29'2"
1.5 m 5.0 ft	kg lb					*20 750 *44,950	13 150 28,400	15 950 34,350	9650 20,850	12 400 27,300	7600 16,750	8.89 29'2"
0 m 0 ft	kg lb			*23 950 *56,300	19 600 42,100	*21 150 *45,800	12 850 27,650	15 700 33,800	9450 20,350	12 800 28,200	7800 17,200	8.64 28'4"
-1.5 m -5.0 ft	kg lb	*18 000 *41,050	*18 000 *41,050	*26 250 *57,050	19 650 42,200	*20 300 *43,950	12 750 27,500	15 650 33,700	9400 20,250	14 050 31,000	8500 18,800	8.10 26'8"
-3.0 m -10.0 ft	kg lb	*28 000 *61,050	*28 000 *61,050	*22 900 *49,600	19 950 42,850	*17 950 *38,600	12 950 27,850			*14 100 *31,000	10 100 22,450	7.21 24'2"
-4.5 m -15.0 ft	kg lb			*16 950 *36,050	*16 950 *36,050					*12 900 *28,100	*12 900 *28,100	5.80 19'2"



ISO 10567



\* Indicates that the load is limited by hydraulic lifting capacity rather than tipping load. The above loads are in compliance with hydraulic excavator lift capacity standard ISO 10567:2007. They do not exceed 87% of hydraulic lifting capacity or 75% of tipping load. Weight of all lifting accessories must be deducted from the above lifting capacities. Lifting capacities are based on the machine standing on a firm, uniform supporting surface. The use of a work tool attachment point to handle/lift objects, could affect the machine lift performance.

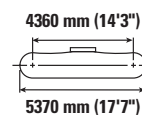
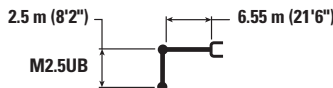
Lift capacity stays with ±5% for all available track shoes.



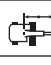

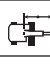

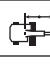

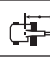

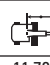
Always refer to the appropriate Operation and Maintenance Manual for specific product information.



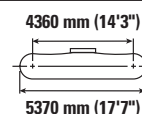
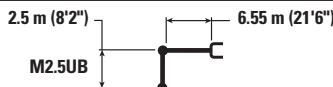
# 349 Hydraulic Excavator Specifications

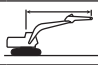

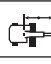

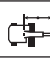

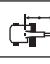

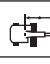

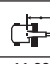
## Mass Boom Lift Capacities – Counterweight: 9.0 mt (19,842 lb) – without Bucket, Heavy Lift: On



		3.0 m/10.0 ft		4.5 m/15.0 ft		6.0 m/20.0 ft		7.5 m/25.0 ft				m ft/in
												
7.5 m 25.0 ft	kg lb									*13 050 *28,850	11 700 26,400	7.11 23'4"
6.0 m 20.0 ft	kg lb					*15 300 *33,250	15 150 32,650	*13 850 *30,300	10 600 22,750	*12 650 *27,900	9450 21,000	8.03 26'8"
4.5 m 15.0 ft	kg lb			*22 750 *48,750	22 250 48,050	*17 200 *37,200	14 400 31,100	*14 600 *31,750	10 300 22,150	*12 850 *28,200	8250 18,250	8.60 28'4"
3.0 m 10.0 ft	kg lb			*58,250	44,000	*19 300 *41,700	13 600 29,350	*15 600 *33,800	9900 21,300	12 400 27,400	7650 16,900	8.88 29'2"
1.5 m 5.0 ft	kg lb					*20 750 *44,950	13 000 28,000	15 750 33,850	9550 20,550	12 200 26,900	7500 16,500	8.89 29'2"
0 m 0 ft	kg lb			*23 950 *56,300	19 300 41,500	*21 150 *45,800	12 650 27,250	15 500 33,350	9300 20,050	12 600 27,800	7700 16,950	8.64 28'4"
-1.5 m -5.0 ft	kg lb	*18 000 *41,050	*18 000 *41,050	*26 250 *57,050	19 400 41,650	*20 300 *43,950	12 600 27,100	15 450 33,250	9250 19,950	13 850 30,550	8400 18,500	8.10 26'8"
-3.0 m -10.0 ft	kg lb	*28 000 *61,050	*28 000 *61,050	*22 900 *49,600	19 650 42,250	*17 950 *38,600	12 750 27,500			*14 100 *31,000	9950 22,100	7.21 24'2"
-4.5 m -15.0 ft	kg lb			*16 950 *36,050	*16 950 *36,050					*12 900 *28,100	*12 900 *28,100	5.80 19'2"

## Mass Boom Lift Capacities – Counterweight: 9.0 mt (19,842 lb) – without Bucket, Heavy Lift: On



		3.0 m/10.0 ft		4.5 m/15.0 ft		6.0 m/20.0 ft		7.5 m/25.0 ft				m ft/in
												
7.5 m 25.0 ft	kg lb									*13 050 *28,850	11 600 26,100	7.11 23'4"
6.0 m 20.0 ft	kg lb					*15 300 *33,250	15 000 32,350	*13 850 *30,300	10 500 22,500	*12 650 *27,900	9300 20,750	8.03 26'8"
4.5 m 15.0 ft	kg lb			*22 750 *48,750	22 000 47,550	*17 200 *37,200	14 250 30,750	*14 600 *31,750	10 150 21,900	*12 850 *28,200	8150 18,050	8.60 28'4"
3.0 m 10.0 ft	kg lb			*58,250	43,500	*19 300 *41,700	13 450 29,050	*15 600 *33,800	9750 21,050	12 250 27,050	7600 16,700	8.88 29'2"
1.5 m 5.0 ft	kg lb					*20 750 *44,950	12 850 27,650	15 550 33,450	9400 20,300	12 050 26,550	7400 16,300	8.89 29'2"
0 m 0 ft	kg lb			*23 950 *56,300	19 100 41,000	*21 150 *45,800	12 500 26,950	15 300 32,900	9200 19,800	12 450 27,450	7600 16,700	8.64 28'4"
-1.5 m -5.0 ft	kg lb	*18 000 *41,050	*18 000 *41,050	*26 250 *57,050	19 150 41,150	*20 300 *43,950	12 450 26,750	15 250 32,800	9150 19,700	13 650 30,150	8300 18,250	8.10 26'8"
-3.0 m -10.0 ft	kg lb	*28 000 *61,050	*28 000 *61,050	*22 900 *49,600	19 450 41,750	*17 950 *38,600	12 600 27,150			*14 100 *31,000	9850 21,850	7.21 24'2"
-4.5 m -15.0 ft	kg lb			*16 950 *36,050	*16 950 *36,050					*12 900 *28,100	*12 900 *28,100	5.80 19'2"



ISO 10567



\* Indicates that the load is limited by hydraulic lifting capacity rather than tipping load. The above loads are in compliance with hydraulic excavator lift capacity standard ISO 10567:2007. They do not exceed 87% of hydraulic lifting capacity or 75% of tipping load. Weight of all lifting accessories must be deducted from the above lifting capacities. Lifting capacities are based on the machine standing on a firm, uniform supporting surface. The use of a work tool attachment point to handle/lift objects, could affect the machine lift performance.

Lift capacity stays with ±5% for all available track shoes.

Always refer to the appropriate Operation and Maintenance Manual for specific product information.

# 349 Hydraulic Excavator Specifications

## Bucket Specifications and Compatibility – Australia, New Zealand

	Linkage	Fixed Gauge Long Undercarriage 9.0 mt (19,842 lb) Counterweight													
		Width		Capacity		Weight		Fill	Long Reach Boom 7.4 m (24'2")	Reach Boom 6.9 m (22'8")			Mass Boom 6.55 m (21'6")		
		mm	in	m <sup>3</sup>	yd <sup>3</sup>	kg	lb			%	LR4.3 (14'1")	R2.9 (9'6")	R3.35 (11'0")	R3.9 (12'10")	M2.5 (8'2")
<b>Pin-On (No Quick Coupler)</b>															
Heavy Duty	TB	1650	65	2.41	3.15	2377	5,240	100	○	●	⊙	⊖			
	TB	1850	72	2.69	3.52	2403	5,298	100	◇	⊙	⊖	⊖			
Severe Duty	TB	1550	61	2.14	2.80	2327	5,129	90	⊖	●	●	●			
Heavy Duty	UB	1950	77	3.43	4.48	2912	6,419	100					○	○	
Severe Duty Spade	UB	1550	61	2.61	3.41	2656	5,855	90					●	⊙	
Severe Duty	UB	1850	73	3.21	4.20	2991	6,593	90					⊖	○	
Maximum load with pin-on (payload + bucket)								kg	5140	7200	6690	6245	7630	6910	
								lb	11,332	15,873	14,749	13,768	16,821	15,234	
<b>With Cat Pin Grabber Coupler</b>															
Heavy Duty	TB	1650	65	2.41	3.15	2377	5,240	100	X	⊖	○	○			
	TB	1850	72	2.69	3.52	2403	5,298	100	X	○	○	◇			
Severe Duty	TB	1550	61	2.14	2.80	2327	5,129	90	◇	⊙	⊙	⊖			
Maximum load with coupler (payload + bucket)								kg	4088	6149	5637	5192			
								lb	9,012	13,556	12,428	11,447			

The above loads are in compliance with hydraulic excavator standard EN474-5:2006 + A3:2013, they do not exceed 87% of hydraulic lifting capacity or 75% of tipping capacity with front linkage fully extended at ground line with bucket curled.

Capacity based on ISO 7451:2007.

Bucket weight with Long tips.

### Maximum Material Density:

- 2100 kg/m<sup>3</sup> (3,500 lb/yd<sup>3</sup>)
- ⊙ 1800 kg/m<sup>3</sup> (3,000 lb/yd<sup>3</sup>)
- ⊖ 1500 kg/m<sup>3</sup> (2,500 lb/yd<sup>3</sup>)
- 1200 kg/m<sup>3</sup> (2,000 lb/yd<sup>3</sup>)
- ◇ 900 kg/m<sup>3</sup> (1,500 lb/yd<sup>3</sup>)
- X Not Recommended

Caterpillar recommends using appropriate work tools to maximize the value customers receive from our products. Use of work tools, including buckets, which are outside of Caterpillar's recommendations or specifications for weight, dimensions, flows, pressures, etc. may result in less-than-optimal performance, including but not limited to reductions in production, stability, reliability, and component durability. Improper use of a work tool resulting in sweeping, prying, twisting and/or catching of heavy loads will reduce the life of the boom and stick.

# 349 Hydraulic Excavator Specifications

## Bucket Specifications and Compatibility – North America

	Linkage	Width		Capacity		Weight		Fill	Fixed Gauge Long Undercarriage					
									8.6 mt (18,960 lb) Counterweight with Removal Device/ 9.0 mt (19,842 lb) Counterweight					
									Long Reach Boom	Reach Boom		Mass Boom		
		mm	in	m <sup>3</sup>	yd <sup>3</sup>	kg	lb		7.4 m (24'2")	6.9 m (22'8")		6.55 m (21'6")		
									LR4.3 (14'1")	R3.35 (11'0")	R3.9 (12'10")	M2.5 (8'2")	M3.0 (9'10")	
<b>Pin-On (No Quick Coupler)</b>														
General Duty Capacity	TB	800	30	0.95	1.24	1316	2,901	100	●	●	●			
	TB	900	36	1.23	1.60	1447	3,190	100	●	●	●			
	TB	1050	42	1.51	1.98	1624	3,580	100	●	●	●			
	TB	1200	48	1.80	2.36	1777	3,918	100	⊙	●	●			
	TB	1350	54	2.10	2.74	1893	4,173	100	⊖	●	●			
	TB	1500	60	2.39	3.13	2046	4,511	100	○	⊙	⊙			
	TB	1700	68	2.78	3.64	2233	4,923	100	◇	⊖	⊖			
	TB	1850	74	3.08	4.04	2356	5,194	100	◇	○	○			
General Duty Capacity – Wide Tip	TB	900	36	1.35	1.77	1452	3,201	100	●	●	●			
	TB	1350	54	2.22	2.90	1965	4,332	100	⊖	●	⊙			
	TB	1500	60	2.52	3.29	2081	4,588	100	○	⊙	⊖			
	TB	1650	66	2.81	3.68	2234	4,925	100	◇	⊖	⊖			
	TB	1800	72	3.11	4.07	2351	5,183	100	◇	○	○			
	TB	1950	77	3.41	4.46	2504	5,520	100	X	○	◇			
Heavy Duty	TB	900	36	1.08	1.41	1600	3,527	100	●	●	●			
	TB	1050	42	1.34	1.75	1689	3,724	100	●	●	●			
	TB	1200	48	1.60	2.09	1852	4,083	100	●	●	●			
	TB	1350	54	1.87	2.44	1979	4,363	100	⊖	●	●			
	TB	1500	60	2.14	2.80	2143	4,724	100	○	●	⊙			
	TB	1650	66	2.41	3.15	2307	5,086	100	○	⊙	⊖			
	TB	1800	72	2.69	3.52	2437	5,373	100	◇	⊖	○			
Severe Duty	TB	800	30	0.88	1.15	1514	3,338	90	●	●	●			
	TB	900	36	1.08	1.41	1677	3,697	90	●	●	●			
	TB	1050	42	1.34	1.75	1775	3,913	90	●	●	●			
	TB	1200	48	1.60	2.09	1945	4,288	90	●	●	●			
	TB	1400	55	1.87	2.44	2170	4,783	90	⊙	●	●			
	TB	1550	61	2.14	2.80	2327	5,129	90	⊖	●	●			
	TB	1550	61	2.14	2.80	2369	5,222	90	⊖	●	●			
	TB	1700	67	2.41	3.16	2509	5,531	90	○	⊙	⊙			
	TB	1850	74	2.69	3.52	2709	5,972	90	◇	⊖	⊖			
Severe Duty Power Spade	TB	1750	69	2.40	3.14	2544	5,608	90	○	⊙	⊙			
Severe Duty Spade	TB	1900	75	2.78	3.64	2723	6,003	90	◇	⊖	○			
Extreme Duty	TB	1250	49	1.60	2.09	2194	4,836	90	●	●	●			
	TB	1400	55	1.87	2.44	2334	5,145	90	⊖	●	●			
Extreme Duty Power Spade	TB	1550	61	2.00	2.59	2562	5,647	90	⊖	●	●			
Clean Up	TB	2000	78	2.80	3.66	2036	4,489	100	◇	⊖	⊖			
Heavy Duty	UB	1650	65	2.77	3.62	2573	5,672	100				⊙	⊖	
	UB	1850	73	3.21	4.20	2758	6,079	100				⊖	○	
	UB	1950	77	3.43	4.48	2912	6,419	100				○	○	
Severe Duty	UB	1850	73	3.21	4.20	2972	6,552	90				⊖	○	
Extreme Duty	UB	1600	63	2.61	3.41	3106	6,847	90				⊙	⊖	
	UB	1600	63	2.66	3.48	3217	7,091	90				⊙	⊖	
Maximum load with pin-on (payload + bucket)								kg	5140	6690	6245	7630	6910	
								lb	11,332	14,749	13,768	16,821	15,234	

The above loads are in compliance with hydraulic excavator standard EN474-5:2006 + A3:2013, they do not exceed 87% of hydraulic lifting capacity or 75% of tipping capacity with front linkage fully extended at ground line with bucket curled. Capacity based on ISO 7451:2007. Bucket weight with Long tips.

### Maximum Material Density:

- 2100 kg/m<sup>3</sup> (3,500 lb/yd<sup>3</sup>)
- ⊙ 1800 kg/m<sup>3</sup> (3,000 lb/yd<sup>3</sup>)
- ⊖ 1500 kg/m<sup>3</sup> (2,500 lb/yd<sup>3</sup>)
- 1200 kg/m<sup>3</sup> (2,000 lb/yd<sup>3</sup>)
- ◇ 900 kg/m<sup>3</sup> (1,500 lb/yd<sup>3</sup>)
- X Not Recommended

Caterpillar recommends using appropriate work tools to maximize the value customers receive from our products. Use of work tools, including buckets, which are outside of Caterpillar's recommendations or specifications for weight, dimensions, flows, pressures, etc. may result in less-than-optimal performance, including but not limited to reductions in production, stability, reliability, and component durability. Improper use of a work tool resulting in sweeping, prying, twisting and/or catching of heavy loads will reduce the life of the boom and stick.

(continued on next page)

# 349 Hydraulic Excavator Specifications

## Bucket Specifications and Compatibility – North America (continued)

	Linkage	Width		Capacity		Weight		Fill	Fixed Gauge Long Undercarriage		
									8.6 mt (18,960 lb) Counterweight with Removal Device/ 9.0 mt (19,842 lb) Counterweight		
									Long Reach Boom 7.4 m (24'2")	Reach Boom 6.9 m (22'8")	
		mm	in	m <sup>3</sup>	yd <sup>3</sup>	kg	lb		%	LR4.3 (14'1")	R3.35 (11'0")
<b>With Cat Pin Grabber Coupler</b>											
General Duty Capacity	TB	800	30	0.95	1.24	1316	2,901	100	●	●	●
	TB	900	36	1.23	1.60	1447	3,190	100	●	●	●
	TB	1050	42	1.51	1.98	1624	3,580	100	⊖	●	●
	TB	1200	48	1.80	2.36	1777	3,918	100	○	●	⊙
	TB	1350	54	2.10	2.74	1893	4,173	100	◇	⊙	⊖
	TB	1500	60	2.39	3.13	2046	4,511	100	X	⊖	○
	TB	1700	68	2.78	3.64	2233	4,923	100	X	○	◇
TB	1850	74	3.08	4.04	2356	5,194	100	X	◇	◇	
General Duty Capacity – Wide Tip	TB	900	36	1.35	1.77	1452	3,201	100	⊙	●	●
	TB	1350	54	2.22	2.90	1965	4,332	100	◇	⊖	⊖
	TB	1500	60	2.52	3.29	2081	4,588	100	X	○	○
	TB	1650	66	2.81	3.68	2234	4,925	100	X	○	◇
	TB	1800	72	3.11	4.07	2351	5,183	100	X	◇	◇
TB	1950	77	3.41	4.46	2504	5,520	100	X	◇	X	
Heavy Duty	TB	900	36	1.08	1.41	1600	3,527	100	●	●	●
	TB	1050	42	1.34	1.75	1689	3,724	100	⊙	●	●
	TB	1200	48	1.60	2.09	1852	4,083	100	○	●	●
	TB	1350	54	1.87	2.44	1979	4,363	100	◇	⊙	⊙
	TB	1500	60	2.14	2.80	2143	4,724	100	◇	⊖	○
	TB	1650	66	2.41	3.15	2307	5,086	100	X	○	○
	TB	1800	72	2.69	3.52	2437	5,373	100	X	○	◇
Heavy Duty – Pin Grabber Performance	TB	1200	48	1.49	1.95	1935	4,266	100	⊖	●	●
	TB	1350	54	1.74	2.27	2070	4,563	100	○	●	⊙
	TB	1500	60	1.98	2.59	2242	4,943	100	◇	⊙	⊖
	TB	1650	66	2.23	2.91	2413	5,320	100	X	⊖	○
	TB	1900	74	2.56	3.34	2595	5,721	100	X	○	◇
Severe Duty	TB	800	30	0.88	1.15	1514	3,338	90	●	●	●
	TB	900	36	1.08	1.41	1677	3,697	90	●	●	●
	TB	1050	42	1.34	1.75	1775	3,913	90	⊙	●	●
	TB	1200	48	1.60	2.09	1945	4,288	90	⊖	●	●
	TB	1400	55	1.87	2.44	2170	4,783	90	○	●	⊙
	TB	1550	61	2.14	2.80	2327	5,129	90	◇	⊙	⊖
	TB	1550	61	2.14	2.80	2369	5,222	90	◇	⊖	⊖
	TB	1700	67	2.41	3.16	2509	5,531	90	X	⊖	○
TB	1850	74	2.69	3.52	2709	5,972	90	X	○	◇	
Severe Duty Power Spade	TB	1750	69	2.40	3.14	2544	5,608	90	X	⊖	○
Severe Duty Spade	TB	1900	75	2.78	3.64	2723	6,003	90	X	○	◇
Extreme Duty	TB	1250	49	1.60	2.09	2194	4,836	90	○	●	●
	TB	1400	55	1.87	2.44	2334	5,145	90	◇	⊙	⊖
Extreme Duty Power Spade	TB	1550	61	2.00	2.59	2562	5,647	90	X	⊖	⊖
Clean Up	TB	2000	78	2.80	3.66	2036	4,489	100	X	○	◇
Maximum load with coupler (payload + bucket)								kg	4088	5637	5192
								lb	9,012	12,428	11,447

The above loads are in compliance with hydraulic excavator standard EN474-5:2006 + A3:2013, they do not exceed 87% of hydraulic lifting capacity or 75% of tipping capacity with front linkage fully extended at ground line with bucket curled. Capacity based on ISO 7451:2007. Bucket weight with Long tips.

### Maximum Material Density:

- 2100 kg/m<sup>3</sup> (3,500 lb/yd<sup>3</sup>)
- ⊙ 1800 kg/m<sup>3</sup> (3,000 lb/yd<sup>3</sup>)
- ⊖ 1500 kg/m<sup>3</sup> (2,500 lb/yd<sup>3</sup>)
- 1200 kg/m<sup>3</sup> (2,000 lb/yd<sup>3</sup>)
- ◇ 900 kg/m<sup>3</sup> (1,500 lb/yd<sup>3</sup>)
- X Not Recommended

Caterpillar recommends using appropriate work tools to maximize the value customers receive from our products. Use of work tools, including buckets, which are outside of Caterpillar's recommendations or specifications for weight, dimensions, flows, pressures, etc. may result in less-than-optimal performance, including but not limited to reductions in production, stability, reliability, and component durability. Improper use of a work tool resulting in sweeping, prying, twisting and/or catching of heavy loads will reduce the life of the boom and stick.

# 349 Hydraulic Excavator Specifications

## Bucket Specifications and Compatibility – Korea

	Linkage	Width		Capacity		Weight		Fill	Fixed Gauge Long Undercarriage		
		mm	in	m <sup>3</sup>	yd <sup>3</sup>	kg	lb		%	9.0 mt (19,842 lb) Counterweight	
										Reach Boom 6.9 m (22'8")	Mass Boom 6.55 m (21'6")
									R3.35 (11'0")	M3.0 (9'10")	
<b>Pin-On (No Quick Coupler)</b>											
Heavy Duty	TB	1650	65	2.41	3.15	2377	5,240	100	⊙		
	TB	1950	77	3.08	4.03	2710	5,974	100	○		
Severe Duty	TB	1650	65	2.41	3.16	2497	5,504	90	⊙		
Severe Duty Power Spade	TB	1750	69	2.40	3.14	2544	5,608	90	⊙		
General Duty	UB	1550	62	2.61	3.41	2341	5,162	100		⊙	
	UB	1950	77	3.43	4.48	2717	5,989	100		○	
Severe Duty	UB	1550	61	2.61	3.41	2656	5,855	90		⊙	
									Maximum load with pin-on (payload + bucket)		kg
									lb	14,749	15,234

The above loads are in compliance with hydraulic excavator standard EN474-5:2006 + A3:2013, they do not exceed 87% of hydraulic lifting capacity or 75% of tipping capacity with front linkage fully extended at ground line with bucket curled.

Capacity based on ISO 7451:2007.

Bucket weight with Long tips.

### Maximum Material Density:

- ⊙ 1800 kg/m<sup>3</sup> (3,000 lb/yd<sup>3</sup>)
- 1200 kg/m<sup>3</sup> (2,000 lb/yd<sup>3</sup>)

Caterpillar recommends using appropriate work tools to maximize the value customers receive from our products. Use of work tools, including buckets, which are outside of Caterpillar's recommendations or specifications for weight, dimensions, flows, pressures, etc. may result in less-than-optimal performance, including but not limited to reductions in production, stability, reliability, and component durability. Improper use of a work tool resulting in sweeping, prying, twisting and/or catching of heavy loads will reduce the life of the boom and stick.

# 349 Hydraulic Excavator Specifications

## Attachments Offering Guide – Australia, New Zealand

Not all Attachments are available in all regions. Consult your Cat dealer for configurations available in your region.

Match

\* Working range front only

No Match

### PIN-ON ATTACHMENTS

Undercarriage		L					
Counterweight		9.0 mt (19,842 lb)					
Boom Type		Reach			ME		Long-Reach
Stick Length		2.9 m (9'6")	3.35 m (11'0")	3.9 m (12'10")	2.5 m (8'2")	3.0 m (9'10")	4.3 m (14'1")
Hydraulic Hammers	H160 GC	✓	✓	✓	✓	✓	✓
	H160 GC S	✓	✓	✓	✓	✓	✓
	H160 S				✓	✓	
	H180 GC	✓	✓	✓	✓	✓	✓
	H180 GC S	✓	✓	✓	✓	✓	✓
	H180 S				✓	✓	
Demolition and Sorting Grapples	G345				✓	✓	
Mobile Scrap and Demolition Shears	S3050				✓	✓	

### CAT PIN GRABBER ATTACHMENTS

Undercarriage		L					
Counterweight		9.0 mt (19,842 lb)					
Boom Type		Reach			ME		Long-Reach
Stick Length		2.9 m (9'6")	3.35 m (11'0")	3.9 m (12'10")	2.5 m (8'2")	3.0 m (9'10")	4.3 m (14'1")
Hydraulic Hammers	H160 GC	✓	✓	✓	✓	✓	✓
	H160 GC S	✓	✓	✓	✓	✓	✓
	H160 S						
	H180 GC	✓	✓	✓	✓	✓	
	H180 GC S	✓	✓	✓	✓	✓	✓*

### BOOM-MOUNT ATTACHMENTS

Undercarriage		L		
Counterweight		9.0 mt (19,842 lb)		
Boom Type		Reach HD		ME
Mobile Scrap and Demolition Shears	S2090		✓	✓
	S3070		✓	✓
	S3090		✓	✓

# 349 Hydraulic Excavator Specifications

## Attachments Offering Guide – North America

Not all Attachments are available in all regions. Consult your Cat dealer for configurations available in your region.

Match

\* Working range front only

No Match

### PIN-ON ATTACHMENTS

Undercarriage		L				
Counterweight		9.0 mt (19,842 lb)				
Boom Type		Reach		ME		Long-Reach
Stick Length		3.35 m (11'0")	3.9 m (12'10")	2.5 m (8'2")	3.0 m (9'10")	4.3 m (14'1")
Hydraulic Hammers	H160 GC	✓	✓	✓	✓	✓
	H160 GC S	✓	✓	✓	✓	✓
	H160 S			✓	✓	
	H180 GC	✓	✓	✓	✓	✓
	H180 GC S	✓	✓	✓	✓	✓
	H180 S			✓	✓	
Multi-Processors	MP345 Concrete Cutter Jaw			✓	✓	
	MP345 Demolition Jaw			✓	✓	
	MP345 Pulverizer Jaw			✓	✓	
	MP345 Shear Jaw			✓	✓	
	MP365 Concrete Cutter Jaw			✓	✓*	
	MP365 Demolition Jaw			✓*		
	MP365 Pulverizer Jaw			✓*		
	MP365 Shear Jaw			✓		
Demolition and Sorting Grapples	G345			✓	✓	
Mobile Scrap and Demolition Shears	S3050			✓	✓	
	S3050 Flat Top			✓	✓	
Pulverizers	P235			✓	✓	

(continued on next page)

# 349 Hydraulic Excavator Specifications

## Attachments Offering Guide – North America (continued)

Not all Attachments are available in all regions. Consult your Cat dealer for configurations available in your region.

Match       \* Working range front only       No Match

### CAT PIN GRABBER ATTACHMENTS

Undercarriage		L				
Counterweight		9.0 mt (19,842 lb)				
Boom Type		Reach		ME		Long-Reach
Stick Length		3.35 m (11'0")	3.9 m (12'10")	2.5 m (8'2")	3.0 m (9'10")	4.3 m (14'1")
Hydraulic Hammers	H160 GC	✓	✓	✓	✓	✓
	H160 GC S	✓	✓	✓	✓	✓
	H160 S			✓	✓	
	H180 GC	✓	✓	✓	✓	
	H180 GC S	✓	✓	✓	✓	✓*
	H180 S			✓	✓	
Multi-Processors	MP345 Concrete Cutter Jaw			✓	✓*	
	MP345 Demolition Jaw			✓	✓*	
	MP345 Pulverizer Jaw			✓	✓*	
	MP345 Shear Jaw			✓	✓*	
Demolition and Sorting Grapples	G345			✓	✓	
Mobile Scrap and Demolition Shears	S3050			✓*		
Pulverizers	P235			✓	✓	

### Boom-mount Attachments

Undercarriage		L		
Counterweight		9.0 mt (19,842 lb)		
Boom Type		ME		Long-Reach
Mobile Scrap and Demolition Shears	S2090	✓		✓
	S3070	✓		✓
	S3090	✓		✓



# 349 Hydraulic Excavator Specifications

## Attachments Offering Guide – Korea

Not all Attachments are available in all regions. Consult your Cat dealer for configurations available in your region.

Match

### PIN-ON ATTACHMENTS

Undercarriage		L	
Counterweight		9.0 mt (19,842 lb)	
Boom Type		Reach	ME
Stick Length		3.35 m (11'0")	3.0 m (9'10")
Hydraulic Hammers	H160 GC	✓	✓
	H160 GC S	✓	✓
	H180 GC	✓	✓
	H180 GC S	✓	✓

# 349 Standard and Optional Equipment

## Standard and Optional Equipment

Standard and optional equipment may vary. Consult your Cat dealer for details.

	Standard	Optional		Standard	Optional
<b>ENGINE</b>			<b>UNDERCARRIAGE AND STRUCTURES</b>		
Cold start block heaters		✓	Towing eye on base frame	✓	
Three selectable modes: Power, Smart, Eco	✓		Full-length track guiding guards		✓
Automatic engine speed control	✓		Segmented track guiding guards		✓
Up to 4500 m (14,760 ft) altitude capability	✓		Swivel guard		✓
52° C (126° F) high-ambient cooling capacity	✓		Grease lubricated track	✓	
Hydraulic reverse fan	✓ <sup>1</sup>	✓ <sup>2</sup>	8.6 mt (18,960 lb) counterweight with removal device		✓ <sup>3</sup>
-18° C (0° F) cold start capability	✓		9.0 mt (19,842 lb) counterweight		✓
-32° C (-25° F) cold start capability		✓	600 mm (24") double grouser track shoes		✓
Double element air filter with integrated precleaner	✓		600 mm (24") HD double grouser track shoes		✓
115 amp alternator	✓		750 mm (30") single grouser track shoes		✓
Single plane three horizontal cooling system	✓		750 mm (30") triple grouser track shoes		✓
Dual stage 5.5 micron primary filter and 4.4 micron 2nd/3rd filters	✓		900 mm (35") triple grouser track shoes		✓
Secure start with PIN code	✓		<b>BOOMS, STICKS AND LINKAGES</b>		
Biodiesel capability up to B20	✓		6.55 m (21'6") Mass boom		✓
<b>HYDRAULIC SYSTEM</b>			6.9 m (22'8") Reach boom		✓
Boom and stick regeneration circuit	✓		7.4 m (24'2") Long Reach boom		✓
Electronic main control valve	✓		2.5 m (8'2") stick		✓
Heavy lift mode	✓		2.9 m (9'6") stick		✓
Automatic hydraulic oil warm up	✓		3.0 m (9'10") stick		✓
Automatic swing parking brake	✓		3.35 m (11'0") stick		✓
High performance hydraulic return filter	✓		3.9 m (12'10") stick		✓
Two speed travel	✓		4.3 m (14'1") stick		✓
Bio hydraulic oil capability	✓		Bucket Linkage, TB family with lifting eye, Cat Grade		✓
Fine swing		✓	Bucket Linkage, TB family without lifting eye, Cat Grade		✓
Combined two-way auxiliary circuit		✓	Bucket Linkage, UB family with lifting eye, Cat Grade		✓
Medium-pressure auxiliary circuit		✓	Bucket Linkage, UB family without lifting eye, Cat Grade		✓
Quick coupler circuit		✓			
Advanced Tool Control		✓			

(continued on next page)

<sup>1</sup>Standard in North America.

<sup>2</sup>Optional in Australia and New Zealand and South Korea.

<sup>3</sup>North America only.

## Standard and Optional Equipment (continued)

Standard and optional equipment may vary. Consult your Cat dealer for details.

	Standard	Optional		Standard	Optional
<b>ELECTRICAL SYSTEM</b>			<b>SERVICE AND MAINTENANCE</b>		
Maintenance-free 1,000 CCA batteries (×4)	✓		Grouped location of engine oil and fuel filters	✓	
Centralized electrical disconnect switch	✓		Scheduled Oil Sampling (S·O·S <sup>SM</sup> ) ports	✓	
LED chassis light, LH and RH boom lights, cab lights	✓		QuickEvac <sup>TM</sup> maintenance ready	✓ <sup>4</sup>	✓ <sup>5</sup>
Premium surround lighting package		✓	Electric refueling pump		✓ <sup>6</sup>
<b>CAT TECHNOLOGY</b>			<b>SAFETY AND SECURITY</b>		
Cat Product Link <sup>TM</sup>	✓		Caterpillar One Key security system	✓	
Work tool recognition	✓		Lockable external tool/storage box	✓	
Work tool tracking*	✓		Lockable door, fuel, and hydraulic tank locks	✓	
Cat Grade with 2D	✓		Lockable fuel drain compartment	✓	
Cat Grade with Advanced 2D		✓	Service platform with anti-skid plate and recessed bolts	✓	
Cat Grade with 3D connectivity:		✓	RH handrail and hand hold (ISO 2867:2011 compliant)	✓	
– Virtual Reference Station**			Standard visibility mirror package	✓	
– Internet Base Service Station**			Signaling/warning horn	✓	
– Trimble Connected Community**			Ground-level secondary engine shutoff switch	✓	
Cat Assist:	✓		Boom lowering check valve		✓ <sup>7</sup>
– Boom Assist			Stick lowering check valve		✓ <sup>7</sup>
– Bucket Assist			Rear and right-hand-side cameras	✓	
– Swing Assist			360° visibility		✓
– Grade Assist					
– Lift Assist					
Cat Payload:	✓				
– Static weigh					
– Auto calibration					
– Payload/cycle information					
– USB reporting capability					
E-Fence:	✓				
– E-ceiling					
– E-floor					
– E-swing					
– E-wall					
– E-cab avoidance					
Auto hammer stop	✓				
Remote Services capability	✓				

\*Paired with PL161 attachment locator.

\*\*Subscription required.

<sup>4</sup>Standard in Australia and New Zealand.

<sup>5</sup>Optional in North America.  
Not available in South Korea.

<sup>6</sup>South Korea only.

<sup>7</sup>Not available in South Korea.

# 349 Attachments

## Dealer Installed Kit and Attachments

Attachments may vary. Consult your Cat dealer for details.

### CAB

- Lower radial wiper
- Polycarbonate roof hatch
- LH/RH electrical pedal for tool control

### SAFETY AND SECURITY

- Bluetooth® key fob
- Dual exit rear window kit

### GUARDS

- Rain protector plus cab light cover
- Falling object guard system (not compatible with cab light cover, rain protector)
- Mesh guard full front (not compatible with cab light cover, rain protector)
- Mesh guard lower half front
- Full protecting vandalism guard
- Rain protector for front windshield with cab light cover

# 349 Cab Options

## Cab Options

	Deluxe	Premium
ROPS, standard sound suppression	●	X
ROPS, advanced sound suppression	X	●
High-resolution 254 mm (10") LCD touchscreen monitor	●	●
High-resolution 254 mm (10") LCD touchscreen monitor + additional monitor (only for use with 360° visibility and Cat Grade with Advanced 2D or Cat Grade with 3D)	○	○
Automatic bi-level air conditioner	●	●
Jog dial and shortcut keys for monitor control	●	●
Keyless push-to-start engine control	●	●
Height-adjustable console, infinite with no tool	●	●
Heated seat with air-adjustable suspension	●	X
Heated and cooled seat with automatic adjustable suspension	X	●
51 mm (2") seat belt	●	●
Tilt-up left-side console	●	●
Bluetooth integrated radio with USB ports	●	●
12V DC outlets (×2)	●	●
Document storage	●	●
Cup and bottle holders	●	●
Openable two-piece front window	●	●
Radial wiper with washer	●	X
Parallel wiper with washer	X	●
Openable polycarbonate skylight hatch	●	●
LED dome and lower interior lights	●	●
Roller rear sunscreen	○	●

● Standard      ○ Optional      X Not available

For more complete information on Cat products, dealer services, and industry solutions, visit us on the web at [www.cat.com](http://www.cat.com)

© 2020 Caterpillar  
All rights reserved

Materials and specifications are subject to change without notice. Featured machines in photos may include additional equipment. See your Cat dealer for available options.

CAT, CATERPILLAR, LET'S DO THE WORK, their respective logos, "Caterpillar Corporate Yellow," the "Power Edge" and Cat "Modern Hex" trade dress as well as corporate and product identity used herein, are trademarks of Caterpillar and may not be used without permission.

AEXQ2492-01 (09-2020)  
Replaces AEXQ2492  
Build Number: 07C  
(Aus-NZ, S Korea, N Am)

