



LARGE MOTOR GRADER

UPGRADE KITS

14M

14M3

14

16M

16M3

16

18M3

18

24M

24

CIRCLE SAVER

FEATURE

- + Simple pinion gear lube system

BENEFIT

- + Lube the pinion gear without climbing under the machine
- + Lube process is faster, safer, and cleaner
- + Extends component life

REFERENCE

- + Special Instruction Media Number M0073634-01
- + Parts Kit 488-2192



14M

14M3

14

16M

16M3

16

18M3

18

24M

24

FRONT AXLE GUARDS

FEATURE

- + Front axle skid plates and cylinder guards

BENEFIT

- + Improved cylinder protection
- + Hose routings protected from external debris

REFERENCE

- 16H & 16M:
 - + Special Instruction Media Number REHS9817-00
 - + Parts Kit 475-7639
- 16, 16M3, 18 & 18M3:
 - + Parts Kit 480-6660



14M

14M3

14

16M

16M3

16

18M3

18

24M

24

FRONT AXLE GUARDS

FEATURE

- + Front axle skid plates and cylinder guards

BENEFIT

- + Improved cylinder protection
- + Hose routings protected from external debris

REFERENCE

24M & 24

- + Service Magazine M0084405-00

- + Parts Kit 442-1960

*24M front axle guards require the installation of updated 24M steering cylinders



14M

14M3

14

16M

16M3

16

18M3

18

24M

24

STEERING CYLINDER UPDATE

FEATURE

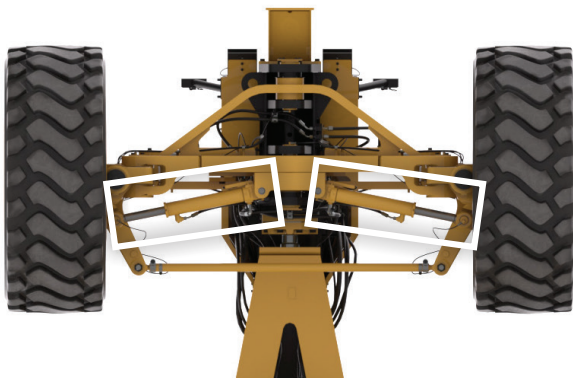
- + Updated steering cylinders

BENEFIT

- + Better sensor protection for longer sensor life
- + Elimination of need for trim files
- + Compatible with front axle guards

REFERENCE

- + Service Magazine M0083586-00
- + Parts Kit 489-2403 & 489-2406



14M

14M3

14

16M

16M3

16

18M3

18

24M

24

ENGINE COMPRESSION BRAKE

FEATURE

- + Compression Brake / Engine Brake

- + Reduces owning & operating cost
- + Improves machine uptime

BENEFIT

- + Enhances the braking capability of the machine
- + Reduces the overheating of the brake pads

REFERENCE

- + Special Instruction Media Number REBE5664-00

14M

14M3

14

16M

18M3

16

18M3

18

24M

24



STROKE-LIMITING COLLARS

FEATURE

- + Low-cost collar to reduce incidence of drawbar to frame contact when lifting the blade
- + The collars are specifically designed to be wear items and can easily be installed or removed in minutes using hand tools

BENEFIT

- + Protects the frame and drawbar by reducing the instances and intensity when contact of the drawbar to frame is made

- + Reduces the need to repair the frame and drawbar by welding or eventually replacing the drawbar / circle due to damage

REFERENCE

16, 16M, 16M3, 18 & 18M3:

- + Special Instruction Media Number M0075466
- + Parts Kit 519-2824

24M & 24

- + Special Instruction Media Number M0075466
- + Parts Kit 519-2825

14M

14M3

14

16M

16M3

16

18M3

18

24M

24



ADVANCED CONTROL JOYSTICKS

FEATURE

- + Moves Cat GRADE & Cat GRADE with Cross Slope control buttons to joystick controls

BENEFIT

- + Easily controls Cat GRADE & Cat GRADE with Cross Slope
- + Improves operator efficiency
- + Enhances operator comfort
- + Controls auxiliary hydraulic functions

REFERENCE

- 14M, 14M3, 14, 16M, 16M3, 16, 18M3, & 18
 - + Special Instruction Media Number REHS8847
 - + Parts Kit 463-6258
- 24M & 24
 - + Special Instruction Media Number REHS8847
 - + Parts Kit 463-6258

14M

14M3

14

16M

16M3

16

18M3

18

24M

24



ADVANCED CONTROL JOYSTICKS CONTINUED



LONG-LIFE CIRCLE-DRAWBAR WEAR STRIPS

FEATURE

- + Long-life circle-drawbar wear strips

BENEFIT

- + Best for harsh applications and where frequent adjustment is not possible.

REFERENCE

Top Adjust Wear Strips

- + Media Number PEHJ0314-00

- + Part 352-1002

Circle Shoe Wear Strips

- + Media Number PEHJ0314-00

- + Part 6G-4372



TOP ADJUST

CIRCLE SHOE

14M

14M3

14

16M

16M3

16

18M3

18

24M

24

LONG-LIFE BLADE RAIL WEAR STRIPS

FEATURE

- + Long-life blade rail wear strips

BENEFIT

- + Last up to 3 times as long as the standard offering, adjust and replace less often

REFERENCE

14M, 14M3, 14, 16M, 16M3, 16, 18M3 & 18

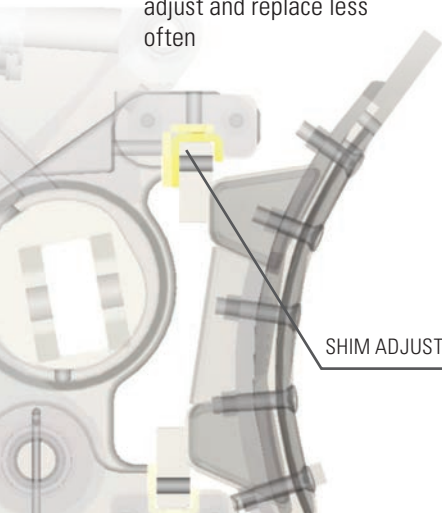
+ Service Magazine
M0101151-01

+ Part 565-6898
24M & 24

+ Service Magazine
M0101151-01

+ Top: Part 565-6900

+ Bottom: Part 565-6899



SHIM ADJUSTMENT



14M

14M3

14

16M

16M3

16

18M3

18

24M

24

LONG-LIFE TIP BEARINGS

FEATURE

- + Long-life tip bearings

BENEFIT

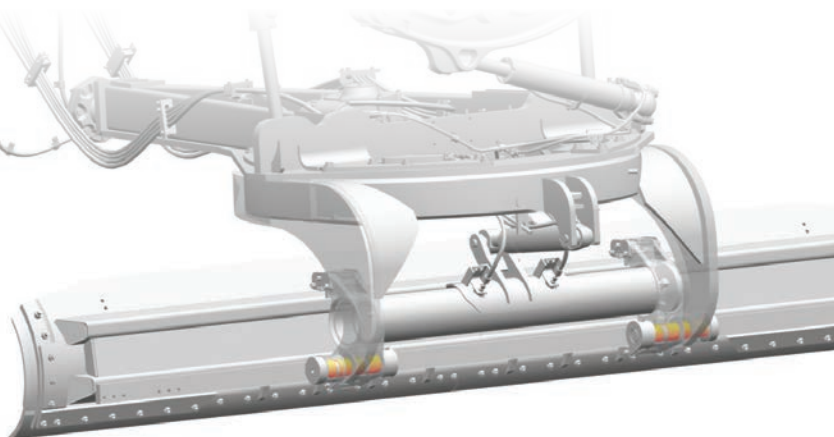
- + Last up to 3 times as long as the standard offering, adjust and replace less often

REFERENCE

14M, 14M3, 14, 16M, 16M3, 16, 18M3 & 18

- + Part 574-2091

* Can be used with Greasable Blade Tilt Pin Assembly



14M

14M3

14

16M

16M3

16

18M3

18

24M

24

GREASABLE BLADE TIP PIN ASSEMBLY

FEATURE

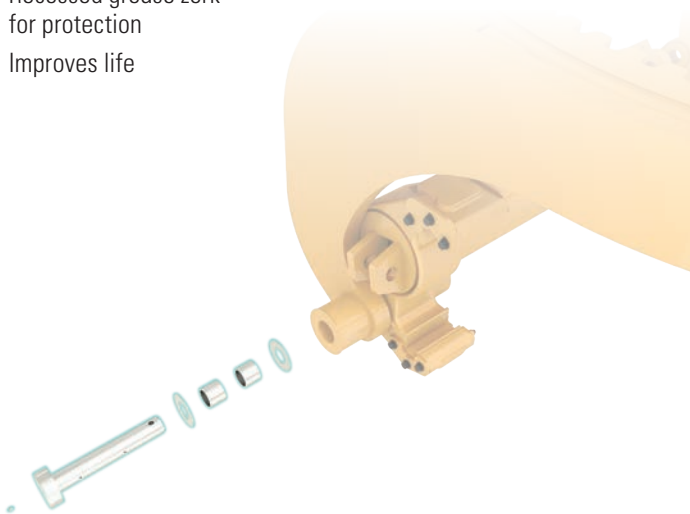
- + Greasable blade tip pins

BENEFIT

- + Greasable
- + Recessed grease zerk for protection
- + Improves life

REFERENCE

- + Service Magazine
M0107870-00



14M

14M3

14

16M

16M3

16

18M3

18

24M

24

LONG-LIFE LIFT & CENTER SHIFT CYLINDER INSERTS

FEATURE

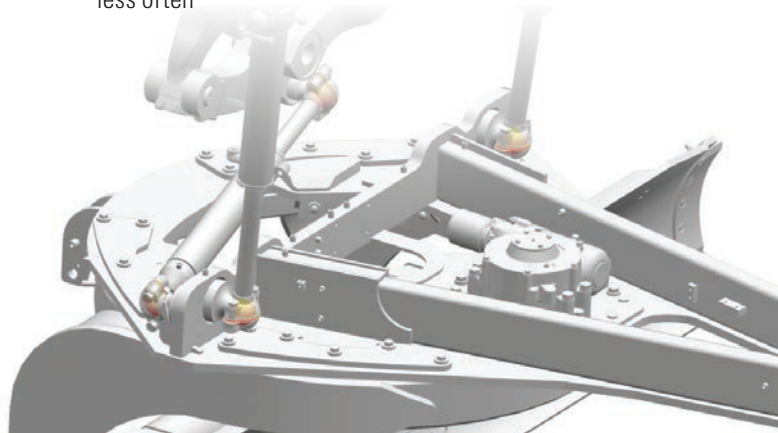
- + Long-life lift & center shift cylinder inserts

BENEFIT

- + Last up to 3 times as long as the standard offering, adjust and replace less often

REFERENCE

- 14M, 14M3, 14,
+ Part 575-5623
- 16M, 16M3, 16, 18M3 & 18
+ Part 580-1081



14M

14M3

14

16M

16M3

16

18M3

18

24M

24

MOLDBOARD WEAR PLATES

FEATURE

- + Moldboard wear plates

BENEFIT

- + Increase service life of the moldboard

REFERENCE

- + Service Magazine
M0088727-01

Part No.	Length	Radius
4D-5820	1600 mm / 63 in	343 mm / 13.5 in
4D-5821	1905 mm / 75 in	343 mm / 13.5 in
8W-5265	1600 mm / 63 in	413 mm / 16.26 in
8W-5266	1905 mm / 75 in	413 mm / 16.26 in
385-6748	2210 mm / 87 in	413 mm / 16.26 in
136-2541	5188 mm / 204 in	424 mm / 16.7 in

*The 18M3, 18, 24M & 24 come standard with moldboard wear plates. If those plates need replaced, please use the Service Magazine and part numbers listed.

14M

14M3

14

16M

16M3

16

18M3

18

24M

24



CAPSURE RIPPER TIPS & SHANK PROTECTORS

FEATURE

- + Hammerless retention ripper tips

BENEFIT

- + Improved safety due to the hammerless design retention technology—the ripper tip and shank protector are easily installed with a 180 degree turn of a ½ inch ratchet
- + Quicker replacements and less machine downtime
- + Shank protector extends shank life
- + Can be used on a Cat ripper shank without any modifications

REFERENCE

- + Media Number PELJ2079
- + Centerline Tip: 472-0824
- + Penetration Tip: 472-0825
- + Shank Protector: 472-0827
- + Pin Kit: 473-3816
- + Spacer: 198-4769



14M

14M3

14

16M

16M3

16

18M3

18

24M

24

*To use shank protectors, please ensure your ripper shank has a hole to accept the shank protector hardware. Shanks with holes for the shank protector started being offered in late 2016. If you want the shank protector, but do not have the correct shank, you can order the proper shank (part # 484-8282)

NEXT-GEN FILTERS

FEATURE

- + Cartridge Style Filters

BENEFIT

- + Hydraulic: The new media offers extremely good flow characteristics with low pressure drop, which helps minimize filter bypass in the transmission system during cold-start situations
- + Fuel: Fuel Filters provide unsurpassed contamination control to ensure that only clean fuel reaches your engine
- + Lower Cost: The filter housing is reusable, so only the cartridge needs to be changed, lowering disposal costs

REFERENCE

- + Service Magazine M0110125-00



14M

14M3

14

16M

16M3

16

18M3

18

24M

24

GEN 2 STEERING UPGRADE KIT

FEATURE

- + New Steering Control Valve

BENEFIT

Improves Performance

- + Reduces fault codes
- + Eliminates external PRV
- + Includes an internal pilot bleed warning circuit

Improves Reliability

- + Reduces connections

REFERENCE

16M

- + Service Magazine
M0064288-01

- + Parts Kit 494-9355

24M

- + Special Instruction Media
Number REHS7189-05

- + Parts Kit 435-4711

14M

14M3

14

16M

16M3

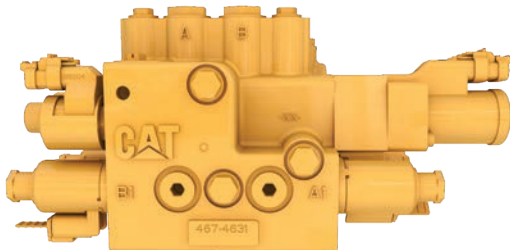
16

18M3

18

24M

24



FRONT FRAME DOUBLER PLATE UPDATE

FEATURE

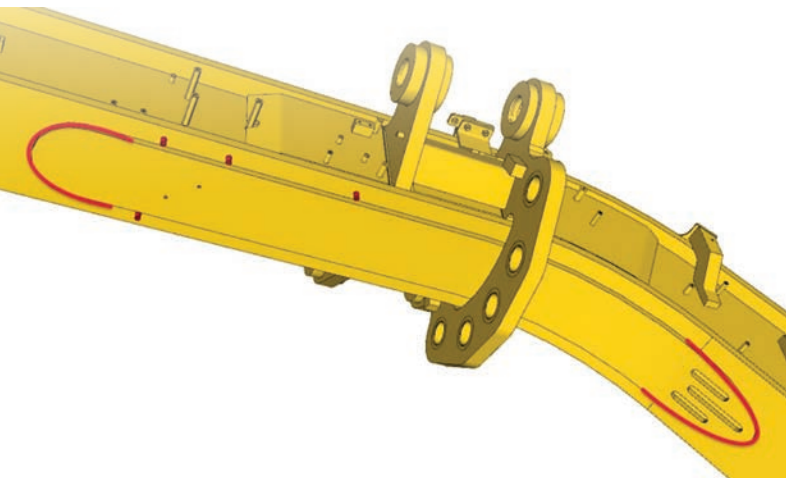
- + Front frame bottom plate weld improvement

REFERENCE

- + Special Instruction Media Number REHS8792-01

BENEFIT

- + Increases the life of the weld resulting in longer frame life



14M

14M3

14

16M

16M3

16

18M3

18

24M

24

FRONT FRAME FISH PLATE UPDATE

FEATURE

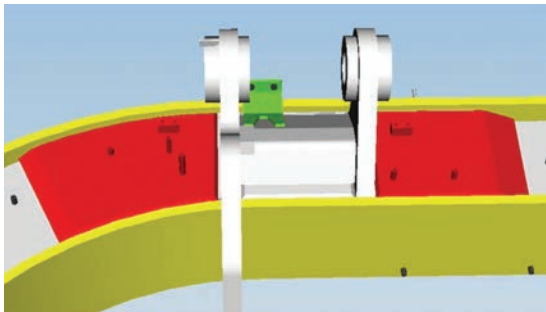
- + Front frame fish plate replacement for weld improvement.

BENEFIT

- + Redesigned plate is easier to weld, resulting in longer life

REFERENCE

- + Special Instruction Media Number REHS8792-01



14M

14M3

14

16M

16M3

16

18M3

18

24M

24

PLATE ADDITION TO DRAWBAR

FEATURE

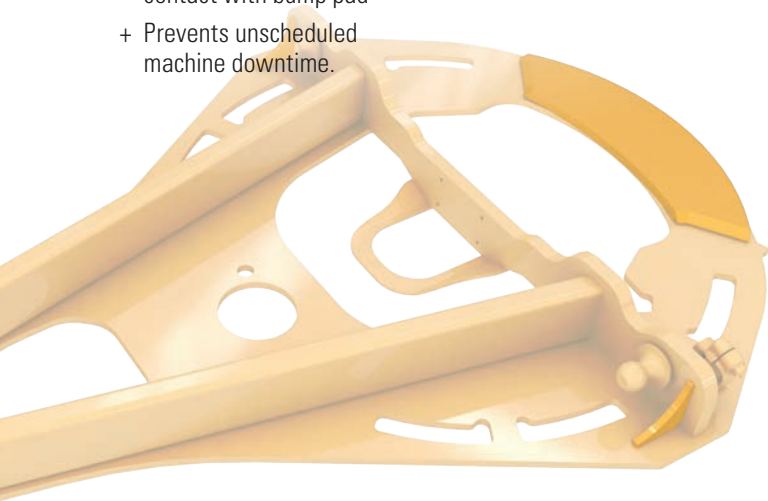
- + Plate addition to drawbar closes the back of the circle

REFERENCE

- + Special Instruction Media Number REHS9813-02

BENEFIT

- + Plate prevents future cracking from center shift contact with bump pad
- + Prevents unscheduled machine downtime.



14M

14M3

14

16M

16M3

16

18M3

18

24M

24

TORSIONAL COUPLER UPDATE

FEATURE

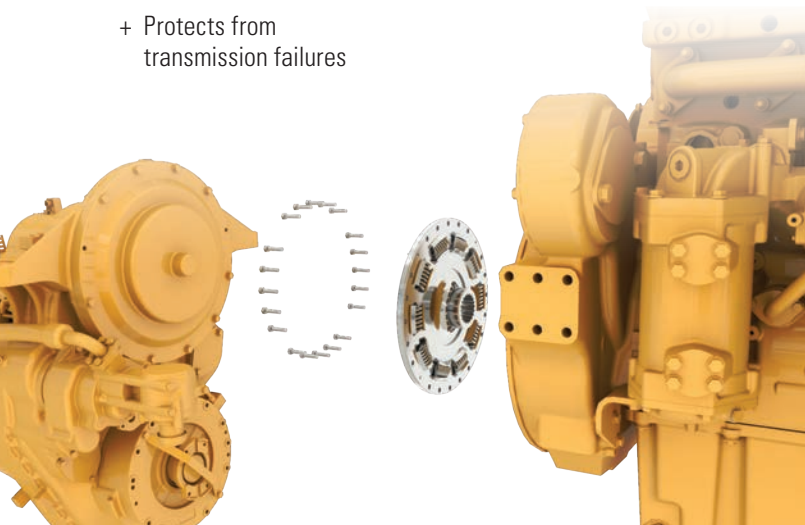
- + 20-bolt coupler, piston and seals

REFERENCE

- + Special Instruction Media Number REHS4299-01

BENEFIT

- + Longer service life to align with transmission rebuilds
- + Protects from transmission failures



14M

14M3

14

16M

16M3

16

18M3

18

24M

24

THRUST WASHER UPDATE

FEATURE

- + Thrust washer replacement

BENEFIT

- + Prevents damage to the lip seal and associated damage to the tandem housing or top hat housing
- + Prevents leaks

REFERENCE

- + Service Magazine
SEPD1202-00



14M

14M3

14

16M

16M3

16

18M3

18

24M

24

TIE ROD UPDATE

FEATURE

- + More robust replacement for bent tie rods—15mm greater outer diameter

BENEFIT

- + Bent tie rods contribute to front tire misalignment

REFERENCE

- + Special Instruction Media Number REBE7107-00

14M

14M3

14

16M

16M3

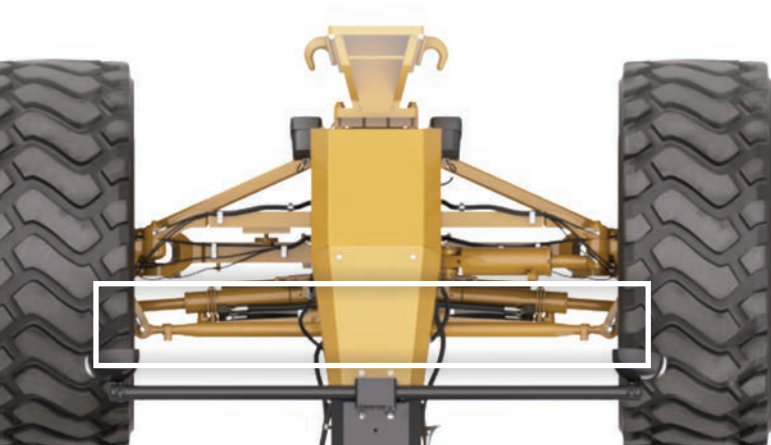
16

18M3

18

24M

24



TIRE MONITORING SYSTEM

FEATURE

- + Monitors high / low pressure, monitors high temperature, manages optimal tire limits, waterproof sensor, real-time data, facilitates proper tire inflation

BENEFIT

- + Early warnings help avoid premature tire failure, reducing costs
- + Hazardous conditions prevented (overheated tire)

- + Optimal fuel consumption; optimal traction, braking, and turning; reduced unexpected downtime
- + Tire issues assessed before additional tire damage occurs; helps schedule preventive maintenance

REFERENCE

- + Special Instruction Media Number REHS9135-05



14M

14M3

14

16M

16M3

16

18M3

18

24M

24

DRIVELINE UPGRADE KIT

FEATURE

- + Upgrades serial number prefix B9K drivelines

BENEFIT

- + Average 10% reduction in fuel consumption
- + Lower vibration levels increases general machine and component durability
- + Reduced exhaust temperatures provides extended exhaust component life
- + Improved engine response at low idle with multiple hydraulic functions
- + Smoother and quicker shifting while working uphill or under load

- + Increase high altitude derate from 5,000 to 9,500ft for T3 Engine

REFERENCE

- + Special Instruction Media Number REHS4297-02
- + Parts Kit
 - 435-4709 ENGINE KIT
 - 435-4710 ALTERNATOR KIT
 - 435-4712 TRANSMISSION KIT



14M

14M3

14

16M

16M3

16

18M3

18

24M

24

MESABI RADIATOR UPGRADE KIT

FEATURE

- + Clog-resistant radiator

BENEFIT

- + More durable
- + Reduces plugging
- + Reduces maintenance
(individual cores can be replaced)
- + Easier to clean

REFERENCE

- + Special Instruction Media
Number REHS8744-01
- + Part Kit 453-3122



14M

14M3

14

16M

16M3

16

16M3

16

24M

24

POWERED ARM PODS

FEATURE

- + Motorized replacement for manual pod height adjuster

REFERENCE

- + Service Magazine M0084759-01

BENEFIT

- + More quickly change arm pod height
- + Greater operator comfort



14M

14M3

14

16M

16M3

16

18M3

18

24M

24

HYDRAULIC FLUID MONITORING

FEATURE

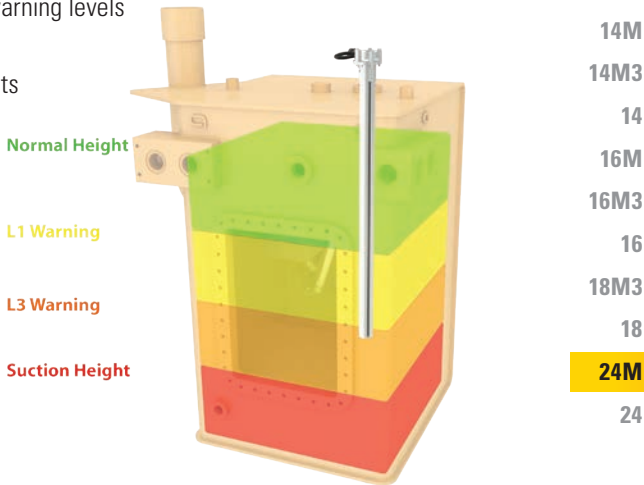
- + Real-time hydraulic fluid monitoring

BENEFIT

- + Dynamic hydraulic fluid level monitoring
- + Increasing warning levels
- + Diagnostics
- + Logged events

REFERENCE

- + Special Instruction Media Number REHS9814-00
- + Parts Kit 466-0822





© 2020 Caterpillar. All Rights Reserved. CAT, CATERPILLAR, LET'S DO THE WORK, their respective logos, "Caterpillar Corporate Yellow", the "Power Edge" and Cat "Modern Hex" trade dress as well as corporate and product identity used herein, are trademarks of Caterpillar and may not be used without permission.

PEDJ0514