



# 963

## Track Loader

Build Number: 12A

# Technical Specifications

Configurations and features may vary by region. Please consult your Cat® dealer for availability in your area.

## Table of Contents

### 963 Track Loader

<b>Specifications</b> .....	<b>3</b>	Buckets and Couplers .....	6
Engine .....	3	Buckets .....	7
Air Conditioning .....	3	Track .....	9
Drive System .....	3	Ripper .....	9
Implement System .....	3	Standards .....	9
Service Refill Capacities .....	3	Operating Specifications with Pallet Forks .....	10
Drawbar Pull .....	3	<b>Standard and Optional Equipment</b> .....	<b>11</b>
Weights and Dimensions .....	4	<b>963 Environmental Declaration</b> .....	<b>14</b>

### 963 Track Loader – Waste Handler/Demolition Configuration

<b>Key Features and Benefits</b> .....	<b>15</b>	Waste Handler .....	17
<b>Specifications</b> .....	<b>16</b>	Enhanced Cleaning Waste Handler .....	17
Engine .....	16	Extreme Service Waste Handler or Demolition .....	17
Air Conditioning .....	16	Dimensions .....	18
Drive System .....	16	Buckets .....	19
Implement System .....	16	Track .....	20
Service Refill Capacities .....	16	Ripper .....	20
Drawbar Pull .....	16	Waste Handler Features .....	21
Standards .....	17	<b>Standard and Optional Equipment</b> .....	<b>22</b>

(continued on next page)

# 963 Track Loader Table of Contents

## Table of Contents *(continued)*

### 963 Track Loader – Ship Hold Configuration

<b>Key Features and Benefits</b> .....	<b>25</b>	Track .....	27
<b>Specifications</b> .....	<b>26</b>	Weights and Dimensions .....	27
Engine .....	26	Standards .....	27
Air Conditioning .....	26	Dimensions .....	28
Drive System .....	26	Blades .....	28
Implement System .....	26	Buckets .....	29
Service Refill Capacities .....	26	Operating Specifications with Pallet Forks .....	30
Drawbar Pull .....	26	<b>Standard and Optional Equipment</b> .....	<b>31</b>

### 963 Track Loader – Partial Steel Mill Configuration

<b>Key Features and Benefits</b> .....	<b>34</b>	Service Refill Capacities .....	35
<b>Specifications</b> .....	<b>35</b>	Drawbar Pull .....	35
Engine .....	35	Weights and Dimensions .....	36
Air Conditioning .....	35	Buckets .....	37
Drive System .....	35	Standards .....	37
Implement System .....	35	<b>Standard and Optional Equipment</b> .....	<b>38</b>

# 963 Track Loader Specifications

## Engine

Engine Model	Cat® C7.1	
Emissions	Meets U.S. EPA Tier 4 Final, EU Stage V, Korea Tier 5, China Nonroad Stage IV, Japan 2014 emission standards or India Bharat Stage III, Eurasian Economic Union Stage IIIA, UN ECE R96 Stage IIIA emission standards, equivalent to U.S. EPA Tier 3/ EU Stage IIIA.	
Net Power (1,800 rpm)		
ISO 9249/SAE J1349	151 kW	202 hp
ISO 9249 (DIN)	204 mhp	
Engine Power (1,800 rpm)		
ISO 14396	168 kW	225 hp
ISO 14396 (DIN)	227 mhp	
Bore	105 mm	4.1 in
Stroke	135 mm	5.3 in
Displacement	7.01 L	427.8 in <sup>3</sup>

- Net power advertised is the power available at the engine flywheel when the engine is equipped with a fan, air cleaner, clean emissions module and alternator.
- Advertised power is tested per the specified standard in effect at the time of manufacture.
- Inline six-cylinder diesel engine with single turbo, charged with ATAAC and engine mounted aftertreatment (when equipped).
- No derating required up to 3000 m (9,842 ft) altitude.
- Cat U.S. EPA Tier 4 Final, EU Stage V, Korea Stage V, China Nonroad Stage IV, Japan 2014 engines are required to use ULSD (ultra-low sulfur diesel fuel with 15 ppm of sulfur or less) and are compatible\* with ULSD blended with the following lower-carbon intensity fuels\*\* up to:

- ✓ 20% biodiesel FAME (fatty acid methyl ester)\*\*\*
- ✓ 100% renewable diesel, HVO (hydrotreated vegetable oil) and GTL (gas-to-liquid) fuels

Cat engines meeting Eurasian Economic Union Stage IIIA, UN ECE R96 Stage IIIA emission standards, equivalent to U.S. EPA Tier 3/ EU Stage IIIA, are compatible\* with diesel fuel blended with the following lower-carbon intensity fuels\*\*\* up to:

- ✓ 100% biodiesel FAME (fatty acid methyl ester)\*\*\*\*
- ✓ 100% renewable diesel, HVO (hydrotreated vegetable oil) and GTL (gas-to-liquid) fuels

Refer to guidelines for successful application. Please consult your Cat dealer or “Caterpillar Machine Fluids Recommendations” (SEBU6250) for details.

\*While Caterpillar engines are compatible with these alternative fuels, some regions may not allow their use.

\*\*Tailpipe greenhouse gas emissions from lower-carbon intensity fuels are essentially the same as traditional fuels.

\*\*\*Engines with no aftertreatment devices are compatible with higher blends, up to 100% biodiesel (for use of blends higher than 20% biodiesel, consult your Cat dealer).

\*\*\*\*For use of blends higher than 20% biodiesel, consult your Cat dealer.

## Air Conditioning System

The air conditioning system on this machine contains the fluorinated greenhouse gas refrigerant R134a or R1234yf. See the label or instruction manual for identification of the gas.

If equipped with R134a (Global Warming Potential = 1430), the system contains 1.134 kg (2.5 lb) of refrigerant which has a CO<sub>2</sub> equivalent of 1.622 metric tonnes (1.787 tons).

## Drive System

Description	Electronically controlled Hydrostatic drive with two variable displacement bent axis motors and two variable displacement slipper-type axial piston pumps
Travel Speed	Infinite variable speed from 0 to 10 km/h (0 to 6.2 mph)
Relief Valve Setting	47 500 kPa 6,890 psi

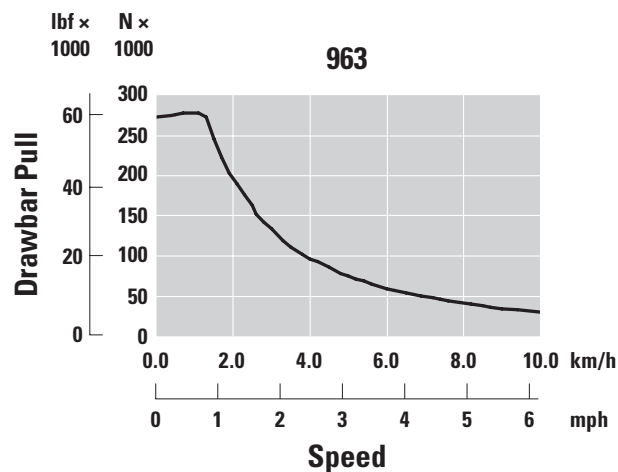
## Implement System

Description	Load sensing, variable displacement piston pump
Maximum Continuous Flow	256 L/min 67.6 gal/min at 1,800 rpm at 1,800 rpm
Maximum Pressure	28 000 kPa 4,061 psi
Filter System	Implement return filter

## Service Refill Capacities

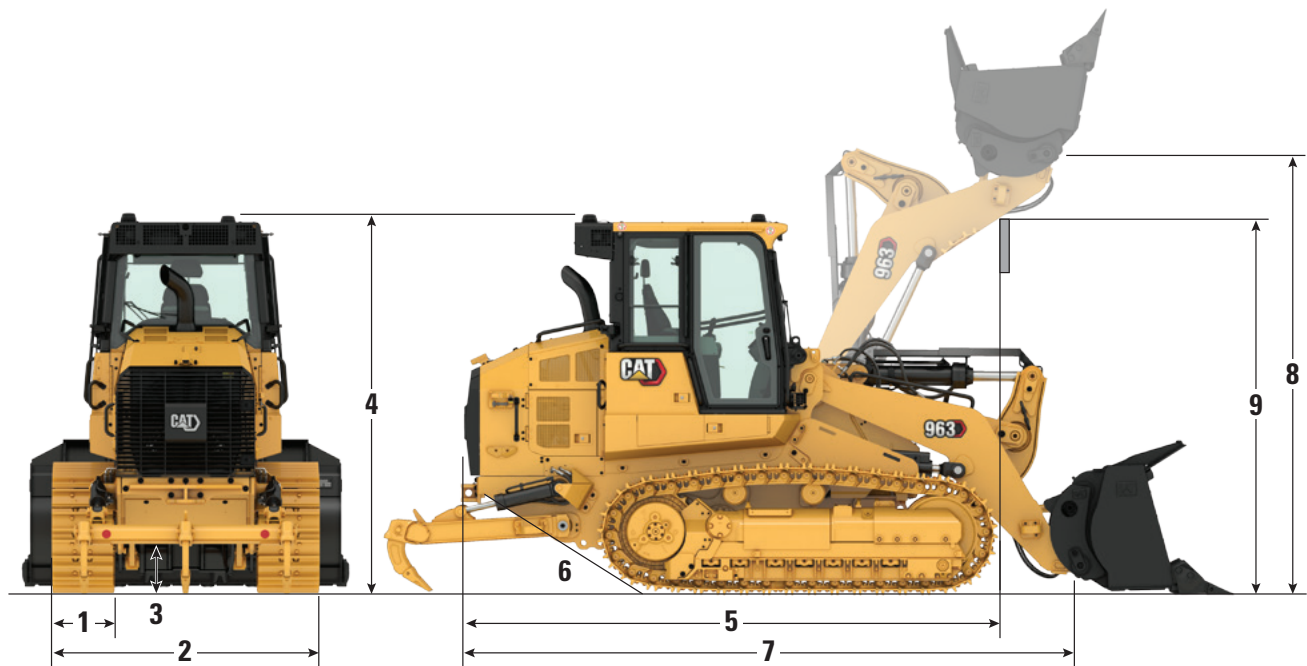
Fuel Tank	320 L	84.5 gal
Diesel Exhaust Fluid (DEF) Tank (when equipped)	16 L	4.2 gal
Cooling System	32 L	8.5 gal
Crankcase (with filter)	16.5 L	4.4 gal
Final Drive (each)	15 L	4.0 gal
Hydraulic Tank	90 L	23.7 gal
Pivot Shaft	1.8 L	0.5 gal

## Drawbar Pull



# 963 Track Loader Specifications

## Weights and Dimensions



	Standard		Low Ground Pressure (LGP)	
Operating Weight <sup>1</sup>	20 358 kg	44,881 lb	22 762 kg	50,181 lb
Shipping Weight <sup>2</sup>	18 468 kg	40,715 lb	20 440 kg	45,062 lb
<b>1 Track Shoe Width:</b>				
Standard <sup>3</sup>	550 mm	22 in	—	—
Wide <sup>3</sup>	—	—	800 mm	31 in
Narrow <sup>3</sup>	450 mm	18 in	—	—
Track Rollers – Each Side	7		7	
Number of Shoes – Each Side	38		38	
Track on Ground	2542 mm	100 in	2542 mm	100 in
Ground Pressure:				
Standard Shoes	63.0 kPa	9.1 psi	48.5 kPa	7.0 psi
Narrow Shoes	77.0 kPa	11.2 psi	—	—

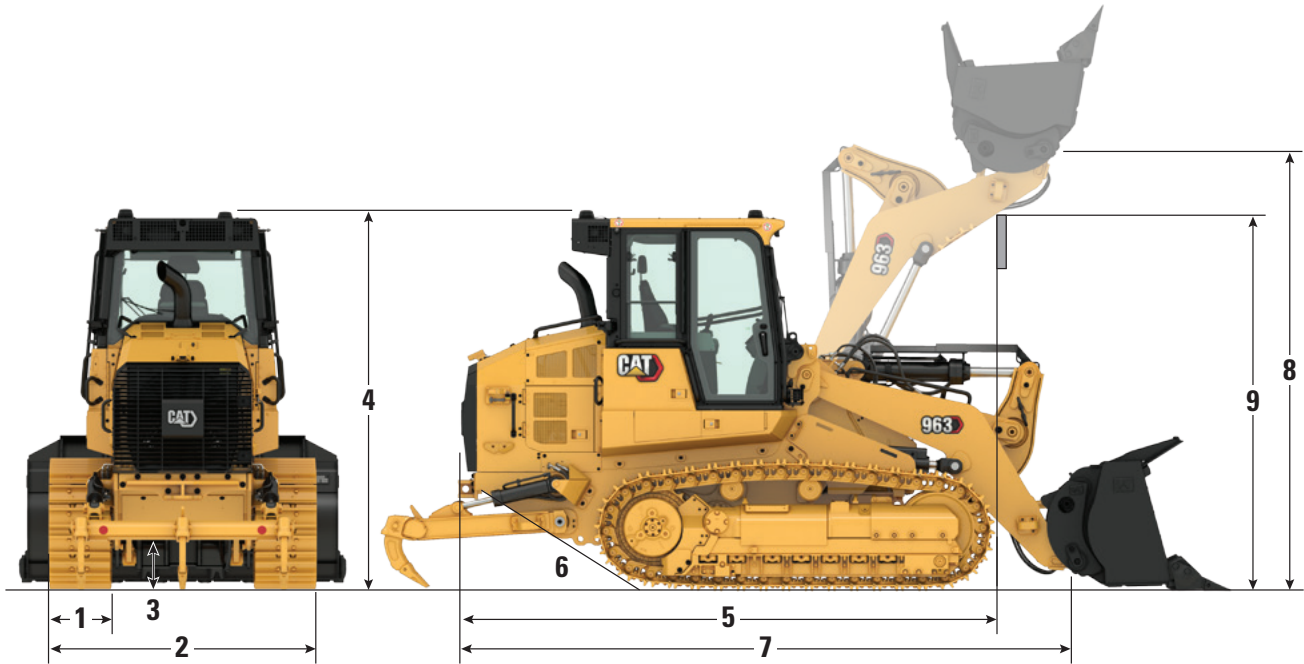
<sup>1</sup>Operating weight: machine with construction package, general purpose bucket with teeth and segments, Heavy Duty Extended Life undercarriage, aftertreatment system, lubricants, 100% fuel tank and 75 kg (165 lb) operator. For machines without aftertreatment, subtract 287 kg (632 lb).

<sup>2</sup>Shipping weight: machine with construction package, Heavy Duty Extended Life undercarriage, aftertreatment system, lubricants, 10% fuel tank, and no bucket. For machines without aftertreatment, subtract 287 kg (632 lb).

<sup>3</sup>Single or double grouser, with or without center holes.

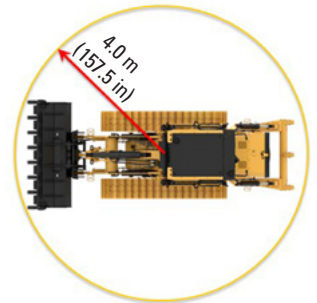
# 963 Track Loader Specifications

## Weights and Dimensions *(continued)*



### 2 Overall Machine Width (without bucket):

Minimum: Standard Gauge (450 mm/17.7 in shoes)	2300 mm	90.5 in
Maximum: Wide Gauge (800 mm/31.5 in shoes)	2900 mm	114.2 in
<b>3</b> Ground Clearance	471 mm	18.5 in
<b>4</b> Machine Height to Top of Cab	3325 mm	130.9 in
<b>5</b> Machine Length to Front of Tracks (including rear bumper)	4943 mm	194.6 in
with Ripper, Add	586 mm	23.0 in
<b>6</b> Ramp Angle	29°	
<b>7</b> Overall Shipping Length (without bucket)	5841 mm	230 in
<b>8</b> Hinge Pin Height at Maximum Lift	3940 mm	155.1 in
<b>9</b> Lift Arm Clearance at Maximum Lift	3590 mm	141.3 in
Turning Radius	4.0 m	157.5 in



Bucket and attachment offerings may vary. Please consult your Cat dealer for availability.

# 963 Track Loader Specifications

## Buckets and Couplers



### Advansys™ Ground Engaging Tools

Cat track loader buckets come from the factory with Advansys™ bucket tips/adapters/locking system. Advansys tips are built to give you maximum productivity and the lowest bucket lifecycle cost for your toughest applications.

- Cat Advansys offers a hammerless retention system, allowing for safe, fast removal and installation. Plus, the hammerless retention requires no special tools. Just turn the retainer 180° to install or remove the tips.
- Adapter design directs material flow over adapter strap, which can extend adapter service life and bucket lifecycle.
- Cast retention pin means no separate retention pin to buy or lose during tip replacements. The tip loads on the adapter nose, never putting the cast retention lugs under stress or wear.
- Cat Advansys bolt-on adapters are available for customers who want the versatility to switch between cutting edges when applications or environments change.

Got older track loader buckets? Wheel loader buckets? Mixed fleet? Advansys tips bring you added value because they can be adapted to fit any bucket in the industry.

Watch to learn more about easy installation of Advansys tips.

<https://www.youtube.com/watch?app=desktop&v=iiDYN9m3J-Y>

### Cat Fusion™ Coupler

Cat Fusion™ couplers add increased versatility to your Cat loader with undiminished performance. Fusion is a system with a full complement of buckets, material handling arms, forks, and other attachments, equipping you to take on almost any job you can face.

#### Full Performance

- Full machine breakout force is available because the coupler adds zero offset.
- Provides the flexibility of a coupler with zero compromise of performance.
- The coupler sits inside the control arms, keeping the pivot point and load center nearly identical to pin-on tools.

#### Unsurpassed Durability

- Wedge mechanism stays tight even after thousands of cycles, eliminating wear and rattle, providing better tool control and productivity.
- Coupler and attachments last longer, reducing or eliminating repairs and replacement.
- Direct connection between the cylinder and wedge eliminates complex, failure-prone linkages.

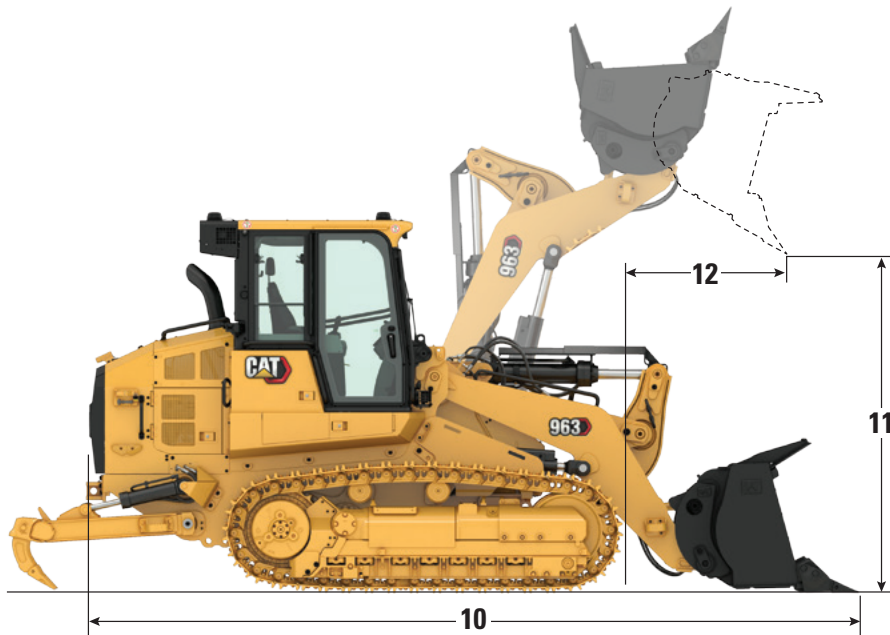
#### Unmatched Versatility

- Operator has full visibility to fork tines, thanks to an open frame design.
- The Fusion system includes:
  - Buckets
  - Blades
  - Rakes
  - ITA and Construction forks
  - Material handling arms
- Fusion is a common interface, so multiple machines on your job can share tools as needed.

See how quickly you can change attachments with the Fusion coupler on your track loader: [https://www.youtube.com/watch?v=ua7F26\\_k0Uw](https://www.youtube.com/watch?v=ua7F26_k0Uw)



## Buckets



### The Right Tool for the Job

All buckets can be used for digging, stump removal, loading, carrying, leveling, etc. Some buckets are more specialized:

Performance Buckets – optimized for loading and carrying

Multi-Purpose (MP) – grabbing material and grading with the clamp open

Flat Floor Buckets – Leveling, loose material handling

For maximum versatility, the Fusion coupler is compatible with a range of buckets, forks, rakes, material handling arm and more. Consult with your Cat dealer for compatibility.

### Fusion Quick Coupler Buckets

### Fusion Buckets

Cutting Edge Type	Fusion Buckets			
	Long Teeth & Segments		Wide Long Teeth & Segments	
Bucket Weight	1742 kg	3,840 lb	2036 kg	4,488 lb
Bucket Width	2571 mm	101.2 in	2998 mm	118.1 in
Rated Capacity at 100% Fill Factor <sup>1</sup>	2.3 m <sup>3</sup>	3.0 yd <sup>3</sup>	2.7 m <sup>3</sup>	3.5 yd <sup>3</sup>
Rated Operating Capacity <sup>2</sup>	4638 kg	10,463 lb	4632 kg	10,211 lb
Static Tipping Load <sup>3</sup>	13 250 kg	29,895 lb	13 233 kg	29,173 lb
<b>10</b> Overall Machine Length (bucket on the ground)	6956 mm	273.9 in	6956 mm	273.9 in
<b>11</b> Dump Clearance at Maximum Lift and 45° Discharge	3045 mm	119.9 in	3045 mm	119.9 in
<b>12</b> Reach at Maximum Lift and 45° Discharge	1193 mm	47 in	1193 mm	47 in
Breakout Force	180 114 N	40,191 lbf	178 201 N	40,061 lbf

<sup>1</sup>Volumetric bucket capacity as per ISO 7546:1983.

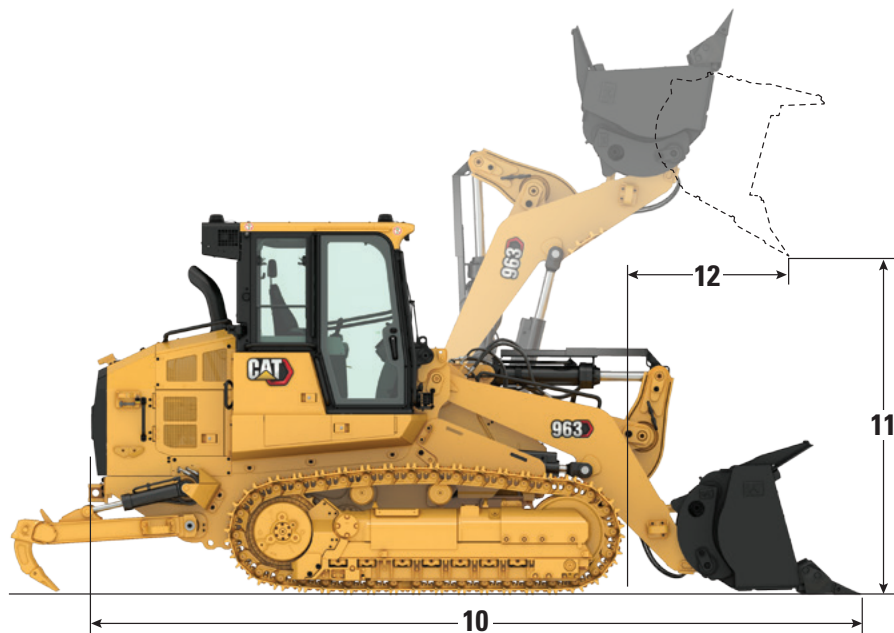
<sup>2</sup>Rated Operating Capacity should be considered with 35% Static Tipping Load as required by ISO 14397-1:2007.

<sup>3</sup>Machine equipped with standard and additional counterweights.

(continued on next page)

# 963 Track Loader Specifications

## Buckets (continued)



Pin-On Buckets	General Purpose Buckets*		Performance Bucket**	Flat Floor Buckets*		Multi-Purpose Bucket**
Cutting Edge Type	Long Teeth & Segments	Bolt-On Full Edge	Long Teeth & Segments	Welded Flush Adapters, Long Teeth	Wide – Welded Flush Adapters, Long Teeth	Long Teeth & Segments
Bucket Weight	1890 kg (4,167 lb)	1739 kg (3,834 lb)	1950 kg (4,299 lb)	1596 kg (3,519 lb)	1857 kg (4,094 lb)	2200 kg (4,850 lb)
Bucket Width	2571 mm (101.2 in)	2571 mm (101.2 in)	2671 mm (105.2 in)	2583 mm (101.6 in)	2998 mm (118.1 in)	2575 mm (101.3 in)
Rated Capacity at 100% Fill Factor <sup>1</sup>	2.5 m <sup>3</sup> (3.2 yd <sup>3</sup> )	2.5 m <sup>3</sup> (3.2 yd <sup>3</sup> )	2.8 m <sup>3</sup> (3.7 yd <sup>3</sup> )	2.3 m <sup>3</sup> (3.0 yd <sup>3</sup> )	2.7 m <sup>3</sup> (3.5 yd <sup>3</sup> )	2.0 m <sup>3</sup> (2.6 yd <sup>3</sup> )
Rated Capacity at 110% Fill Factor			3.1 m <sup>3</sup> (4.0 yd <sup>3</sup> )			
Rated Operating Capacity <sup>2</sup>	4731 kg (10,431 lb)	4808 kg (10,599 lb)	5015 kg (11,057 lb)	4853 kg (10,698 lb)	4761 kg (10,496 lb)	4612 kg (10,169 lb)
Static Tipping Load	13 518 kg (29,802 lb)	13 736 kg (30,283 lb)	14 329 kg (31,590 lb)	13 865 kg (30,566 lb)	13 603 kg (29,989 lb)	13 178 kg (29,053 lb)
<b>10</b> Overall Machine Length (bucket on the ground)	6831 mm (268.9 in)	6613 mm (260.3 in)	6925 mm (272.7 in)	6839 mm (269.2 in)	6839 mm (269.2 in)	6897 mm (271.5 in)
<b>11</b> Dump Clearance at Maximum Lift and 45° Discharge	3079 mm (121.2 in)	3080 mm (121.2 in)	2988 mm (117.7 in)	3145 mm (123.8 in)	3145 mm (123.8 in)	2926 mm (115.2 in)
<b>12</b> Reach at Maximum Lift and 45° Discharge	1231 mm (48.5 in)	1230 mm (48.4 in)	1281 mm (50.5 in)	1182 mm (46.5 in)	1182 mm (46.5 in)	1077 mm (42.4 in)
Breakout Force	181 064 N (40,705 lbf)	183 150 N (41,174 lbf)	163 503 N (36,757 lbf)	198 144 N (44,545 lbf)	197 064 N (44,302 lbf)	175 418 N (39,436 lbf)

\*Machine equipped with no counterweight.

\*\*Machine equipped with standard and additional counterweights.

<sup>1</sup>Volumetric bucket capacity as per ISO 7546:1983.

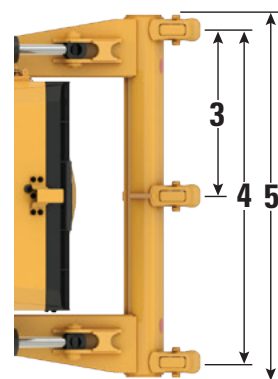
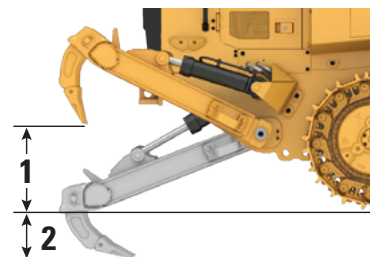
<sup>2</sup>Rated Operating Capacity should be considered with 35% Static Tipping Load as required by ISO 14397-1:2007.

## Track

Track Shoe Width – Heavy Duty Sealed and Lubricated	Grousers	Features
450 mm (18 in)	Double	—
450 mm (18 in)	Double	Center Hole
460 mm (18 in)	Single	Center Hole
550 mm (22 in)	Double	—
550 mm (22 in)	Double	Center Hole
560 mm (22 in)	Single	Extreme Service
7897 mm (31 in)	Double	Wide Gauge
Cat Abrasion		
450 mm (18 in)	Double	Narrow
550 mm (22 in)	Double	—

## Ripper

Type	Radial	
Weight	795 kg	1,753 lb
<b>1</b> Maximum Clearance Raised (shank tip)	873 mm	34.4 in
<b>2</b> Maximum Penetration	274 mm	10.8 in
<b>3</b> Pocket Spacing	896 mm	35.3 in
<b>4</b> Shank Gauge	1792 mm	70.6 in
<b>5</b> Overall Ripping Width	1955 mm	77.0 in
Beam Cross Section	203 mm × 165 mm	8.0 in × 6.5 in
Maximum Penetration Force	176 kN	39,646 lbf
Maximum Pry Out Force	85 kN	19,038 lbf



## Standards

### ROPS/FOPS

- ROPS (Rollover Protective Structure) offered by Caterpillar for the machine meets ROPS criteria ISO 3471:2008.
- FOPS (Falling Object Protective Structure) meets ISO 3449:2005 Level II.

### Brakes

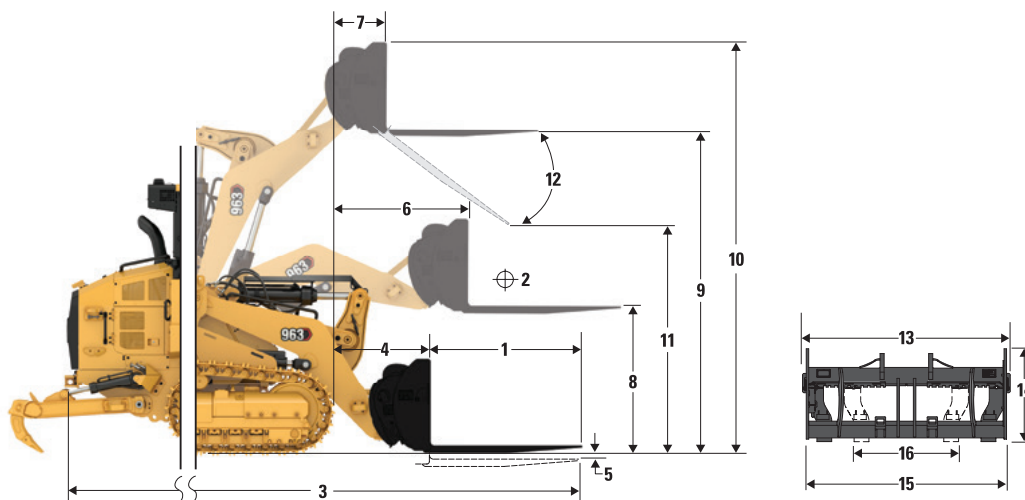
- Brakes meet the standard ISO 10265:2008.

### Sound and Vibration Information

- The declared dynamic operator sound pressure level is 74 dB(A) when “ISO 6396:2008” is used to measure the value for an enclosed cab. The measurements were conducted at 70% of the maximum engine cooling fan speed. The sound level may vary at different engine cooling fan speeds. The cab was properly installed and maintained. The measurements were conducted with the cab doors and the cab windows closed. NOTE: The dynamic operator sound pressure level uncertainty is  $\pm 2$  dB(A).
- Hearing protection may be needed when the machine is operated with an open operator station for extended periods, in a noisy environment or with a cab that is not properly maintained.
- The guaranteed exterior sound power level is 109 dB(A) when the value is measured according to the dynamic test procedures and the conditions that are specified in “ISO 6395:2008.” The measurements were conducted at 70% of the maximum engine cooling fan speed. The sound level may vary at different engine cooling fan speeds.
- Sound level information for machines in European Union countries and in countries that adopt the “EU Directives”: If equipped, the certification label is used to verify the environmental sound certification of the machine to the requirements of the European Union. The value that is listed on the label indicates the guaranteed exterior sound power level ( $L_{WA}$ ) at the time of manufacture for the conditions that are specified in “2000/14/EC.”

# 963 Track Loader Specifications

## Operating Specifications with Pallet Forks



963 Track Loader*	48-in Tines		60-in Tines		72-in Tines		84-in Tines		96-in Tines	
	mm	in	mm	in	mm	in	mm	in	mm	in
1 Tine Length	1219	48.0	1524	60.0	1829	72.0	2134	84.0	2438	96.0
2 Load Center	609	24.0	762	30.0	914	36.0	1067	42.0	1219	48.0
3 Maximum Overall Length	7186	282.9	7492	295.0	7796	306.9	8101	318.9	8406	330.9
4 Reach with Forks at Ground Level	1182	46.5	1182	46.5	1182	46.5	1182	46.5	1182	46.5
5 Dig Depth	-57	-2.2	-57	-2.2	-57	-2.2	-57	-2.2	-57	-2.2
6 Reach with Arms Horizontal and Fork Level	1709	67.3	1709	67.3	1709	67.3	1709	67.3	1709	67.3
7 Reach with Fork at Maximum Height	907	35.7	907	35.7	907	35.7	907	35.7	907	35.7
8 Ground to Top of Tine with Arms Horizontal and Fork Level	1772	69.7	1772	69.7	1772	69.7	1772	69.7	1772	69.7
9 Ground to Top of Tine at Maximum Height and Fork Level	3791	149.3	3791	149.3	3791	149.3	3791	149.3	3791	149.3
10 Overall Height of Fork at Full Lift (top of carriage to ground)	4831	190.2	4831	190.2	4831	190.2	4831	190.2	4831	190.2
11 Clearance at Full Lift and Maximum Dump	2505	98.6	2259	88.9	2014	79.3	1768	69.6	1523	59.9
12 Maximum Discharge Angle from Horizontal	-54°		-54°		-54°		-54°		-54°	
13 Overall Carriage Width	2528	99.5	2528	99.5	2528	99.5	2528	99.5	2528	99.5
14 Overall Carriage Height	1130	44.5	1130	44.5	1130	44.5	1130	44.5	1130	44.5
15 Outside Tine Width (maximum spread)	2178	85.7	2178	85.7	2178	85.7	2178	85.7	2178	85.7
16 Outside Tine Width (minimum spread)	576	22.7	576	22.7	576	22.7	576	22.7	576	22.7
Tine Width (single tine)	180	7.1	180	7.1	180	7.1	180	7.1	180	7.1
Tine Thickness	90.0	3.5	90.0	3.5	90.0	3.5	90.0	3.5	90.0	3.5
	kg	lb	kg	lb	kg	lb	kg	lb	kg	lb
Tine Load Capacity (Per Pair)	22 200	48,942.6	17 800	39,242.3	14 800	32,628.4	12 700	27,998.7	11 300	24,912.2
Static Tipping Load Arm Horizontal and Fork Level	9011	19,866.9	8501	18,740.5	8017	17,674.9	7573	16,695.4	7204	15,882.5
Static Lifting Capacity Arm Horizontal and Fork Level	11 748	25,899.7	11 627	25,632.4	10 867	23,958.5	9692	21,366.4	8738	19,264.0
Rated Load (SAE J1197)**	3154	6,953.4	2975	6,559.2	2806	6,186.2	2651	5,843.4	2521	5,558.9

\*Construction configuration with 450 mm (17.7 in) heavy duty tracks, standard counterweight (320 kg/705 lb) and additional counterweight (310 kg/683 lb).

\*\*For crawler loaders, 35% of the tipping load or 100% of the lifting capacity, whichever is less. (SAE J1197:2011, EN474-3:2022, ISO 14397-1:2007).

## Standard and Optional Equipment

Standard and optional equipment may vary. Consult your Cat dealer for details.

	Standard	Optional		Standard	Optional
<b>POWER TRAIN</b>			<b>ELECTRICAL</b>		
Cat C7.1 diesel engine with engine-mounted aftertreatment to meet U.S. EPA Tier 4 Final, EU Stage V, Korea Tier 5, China Nonroad Stage IV, Japan 2014 emission standards		✓	Ground Level Service Center	✓	
Cat C7.1 diesel engine to meet India Bharat Stage III, Eurasian Economic Union Stage IIIA, UN ECE R96 Stage IIIA emission standards, equivalent to Tier 3/Stage IIIA		✓	24 volt heavy-duty alternator	✓	
Engine turbocharger	✓		Backup alarm	✓	
Air-To-Air After Cooler (ATAAC)	✓		Two horns	✓	
Modular cooling system for engine air intake, oil and water	✓		Two heavy-duty batteries, high output, maintenance free, 1,120 CCA	✓	
Hydraulic demand fan – electronically controlled, temperature sensing	✓		Main disconnect switch	✓	
Hydraulic fan, non-reversing		✓	Electric starter (heavy-duty, 24 volt)	✓	
Hydraulic fan, reversing		✓	Extra lighting – two additional LED lights at the bottom of cab facing forward plus 1 underhood light		✓
Electro Hydrostatic Control (EHC) for transmission	✓		LED flashing beacon		✓
Engine idle shutdown	✓		<b>OPERATOR ENVIRONMENT</b>		
Auto engine speed control	✓		Pressurized, sound suppressed, ROPS/FOPS Cab with tinted glass and right side sliding window	✓	
Electric fuel pump	✓		Cab package with one sliding side window and four halogen lights: two facing forward, roof mounted, two facing rearward, integrated in the air conditioner unit		✓
Water separator	✓		Deluxe cab package with two sliding side windows and eight LED lights: four roof-mounted facing forward, two facing rearward and two facing side integrated in the air conditioner unit		✓
Glow plug starting aid	✓		Deluxe high back seat – heated, with adjustable shock control		✓
Engine air cleaner		✓	Premium Plus high back seat – heated and cooled, lockable side-side isolator		✓
Engine air precleaner		✓	Adjustable armrests	✓	
<b>UNDERCARRIAGE</b>			Electro-Hydraulic, seat mounted control levers with faster processing	✓	
Heavy Duty Extended Life (HDXL) undercarriage and tracks (38 sections), 1850 mm (72.8 in) track gauge	✓		V-pattern and pedal steering controls		✓
Cat Abrasion undercarriage		✓	Joystick steering controls		✓
Oscillating track roller frames	✓		Joystick implement control		✓
Track guiding guards, end section	✓		Two-lever implement control		✓
Hydraulic track adjuster	✓		Seat belt, retractable, with buckling indicator on dash	✓	
Sprocket rims with replaceable bolt-on tough steel segments	✓		Four-point restraint ready seat	✓	
Sprocket guards	✓		Air conditioning and heating	✓	
Seven track rollers per side, with two upper carrier rollers, lifetime lubricated	✓		Heater/defroster with automatic temperature control and automatic blower control	✓	
Idlers, conventional type, lifetime lubricated	✓		Cab air powered precleaner		✓
			Rearview mirror, inside, adjustable	✓	

(continued on next page)

# 963 Standard and Optional Equipment

## Standard and Optional Equipment *(continued)*

Standard and optional equipment may vary. Consult your Cat dealer for details.

	Standard	Optional		Standard	Optional
<b>OPERATOR ENVIRONMENT <i>(continued)</i></b>			<b>FEATURE PACKAGES</b>		
Radio ready. Includes speakers, antenna and 12 V power outlet and 5 V USB port	✓		Low Ground Pressure (LGP) Arrangement		✓
Radio – FM Ready Kit		✓	Waste Handler Package		✓
Radio – Bluetooth® & Aux & Mic		✓	Extreme Service Waste Package		✓
Radio – Bluetooth & Aux & Mic – <b>Dab+</b>		✓	Enhanced Cleaning Waste Package		✓
Radio – Bluetooth & Aux & Mic – <b>Sirius</b>		✓	Ship Hold Package		✓
Parking brake switch and “brake-on” indicator light	✓		Partial Steel Mill Package		✓
Implement lock-out switch	✓		<b>GUARDING</b>		
High Definition rearview camera	✓		Full bottom guards	✓	
254 mm (10 in) color touchscreen display with integrated rear camera display and machine slope indicator	✓		Idler guard (none)		✓
Three selectable working modes (Auto, Power, Eco)	✓		Idler guard		✓
Operator programmable lift and tilt kickouts	✓		Idler guard – ship hold		✓
Machine Pitch and Roll indicate	✓		Front light guard		✓
Bucket shake	✓		Windshield guard		✓
Remote services (Troubleshoot/Remote Flash)		✓	Lift cylinder guard		✓
Heavy-duty rubber floor mat	✓		Tilt cylinder guard		✓
Windshield washers and wipers, multiple speed, front and rear	✓		Two-piece final drive guard		✓
Durable metal roof	✓		Three-piece final drive guard		✓
Coat hook	✓		Final drive bottom guard		✓
Storage compartments under left armrest	✓		Track roller guard		✓
Document holder on right console	✓				
<b>OTHER STANDARD EQUIPMENT</b>					
Durable metal fender	✓				
Exterior sound suppression	✓				
Load sensing implement pump with variable displacement	✓				
Z-bar loader linkage	✓				
Implement cylinders with sensors	✓				
Engine enclosure with lockable doors	✓				
Debris resistant radiator core (six fins-per-inch)	✓				
Hinged radiator guard and swing out fan	✓				
4 × 2 easy tie-down points on chassis	✓				

*(continued on next page)*

## Standard and Optional Equipment (continued)

Standard and optional equipment may vary. Consult your Cat dealer for details.

	Standard	Optional		Standard	Optional
<b>BUCKETS*</b>			<b>MAINTENANCE</b>		
General purpose – 2.5 m <sup>3</sup> (3.25 yd <sup>3</sup> )		✓	Standard lubricant		✓
General purpose with welded flush adaptor – 2.3 m <sup>3</sup> (3.0 yd <sup>3</sup> )		✓	Bio lubricant		✓
Heavy-duty general purpose – 2.5 m <sup>3</sup> (3.25 yd <sup>3</sup> )		✓	Ecosafe lubricant (steel mill)		✓
Multi-purpose – 2.0 m <sup>3</sup> (2.6 yd <sup>3</sup> )		✓	Cat extended life coolant	✓	
Heavy-duty multi-purpose – 2.0 m <sup>3</sup> (2.6 yd <sup>3</sup> )		✓	Service package		✓
General purpose with full bolted cutting edge – 2.5 m <sup>3</sup> (3.25 yd <sup>3</sup> )		✓	Extended service package – manual hydraulic system enabling cab tilt and lock at 30 degrees safely in the field, shovel holder bracket (shovel not included)		✓
Performance general purpose – 2.8 m <sup>3</sup> (3.7 yd <sup>3</sup> )		✓	High speed oil change		✓
Wide flush general purpose – 2.9 m <sup>3</sup> (3.8 yd <sup>3</sup> )		✓	Ecology drains on hydraulic oil tank	✓	
Quick coupler, general purpose – 2.3 m <sup>3</sup> (3.0 yd <sup>3</sup> )		✓	Oil sampling valves	✓	
Quick coupler, general purpose LGP – 2.7 m <sup>3</sup> (3.5 yd <sup>3</sup> )		✓	Cat XT™ hoses	✓	
Heavy-duty landfill bucket – 3.1 m <sup>3</sup> (4.0 yd <sup>3</sup> )		✓	HYDO™ Advanced 10	✓	
Multi-purpose heavy-duty landfill bucket – 2.7 m <sup>3</sup> (3.5 yd <sup>3</sup> )		✓	Implement oil return filter in hydraulic tank	✓	
No bucket		✓	<b>REAR ATTACHMENTS</b>		
Note: All buckets (excluding Slag and General Purpose with full bolted cutting edge) feature Advansys Ground Engaging Tools.			Bumper		✓
<b>HYDRAULICS</b>			Ripper		✓
Two-valve hydraulics, two-lever		✓	No bumper		✓
Two-valve hydraulics, joystick		✓	Ripper hitch		✓
Three-valve hydraulics, front, joystick		✓	Striker bars		✓
Three-valve hydraulics, rear, joystick		✓	<b>COUNTERWEIGHTS</b>		
Three-valve hydraulics, rear, two-lever		✓	Light counterweight 320 kg (705 lb)		✓
Four-valve hydraulics, front and rear, joystick		✓	Light counterweight, additional 310 kg (683 lb)		✓
Standard hydraulic lines		✓	<b>OTHER EQUIPMENT</b>		
Quick coupler hydraulic lines		✓	Access package		✓
<b>FUEL TANK</b>			Jacket water heater (110 V) and ether starting aid		✓
Fuel tank	✓		Jacket water heater (240 V) and ether starting aid		✓
Fast Fill fuel tank		✓	Fusion Quick Coupler		✓
Metallic fuel tank (Steel Mill)		✓	<b>TECHNOLOGY PRODUCTS</b>		
Fuel tank refilling pump		✓	Product Link™ ready	✓	
Sediment hand pump		✓	Product Link cellular		✓
			Product Link dual (cellular and satellite)		✓
			Cat Payload		✓
			Grade Control mast		✓

\*Bucket and attachment offerings may vary. Please consult your Cat dealer for availability.

# 963 Environmental Declaration

The following information applies to the machine at the time of final manufacture as configured for sale in the regions covered in this document. The content of this declaration is valid as of the date issued; however, content related to machine features and specifications are subject to change without notice. For additional information, please see the machine's Operation and Maintenance Manual.

For more information on sustainability in action and our progress, please visit <https://www.caterpillar.com/en/company/sustainability>.

## Engine

- The Cat C7.1 engine meets U.S. EPA Tier 4 Final, EU Stage V, Korea Tier 5, China Nonroad Stage IV and Japan 2014 emission standards or India Bharat Stage III, Eurasian Economic Union Stage IIIA, UN ECE R96 Stage IIIA emission standards, equivalent to U.S. EPA Tier 3/EU Stage IIIA.
- Cat U.S. EPA Tier 4 Final, EU Stage V, Korea Stage V, China Nonroad Stage IV, Japan 2014 engines are required to use ULSD (ultra-low sulfur diesel fuel with 15 ppm of sulfur or less) and are compatible\* with ULSD blended with the following lower-carbon intensity fuels\*\* up to:
  - ✓ 20% biodiesel FAME (fatty acid methyl ester)\*\*\*
  - ✓ 100% renewable diesel, HVO (hydrotreated vegetable oil) and GTL (gas-to-liquid) fuelsCat engines meeting Eurasian Economic Union Stage IIIA, UN ECE R96 Stage IIIA emission standards, equivalent to U.S. EPA Tier 3/EU Stage IIIA, are compatible\* with diesel fuel blended with the following lower-carbon intensity fuels\*\*\* up to:
  - ✓ 100% biodiesel FAME (fatty acid methyl ester)\*\*\*\*
  - ✓ 100% renewable diesel, HVO (hydrotreated vegetable oil) and GTL (gas-to-liquid) fuelsRefer to guidelines for successful application. Please consult your Cat dealer or "Caterpillar Machine Fluids Recommendations" (SEBU6250) for details.
  - \*While Caterpillar engines are compatible with these alternative fuels, some regions may not allow their use.
  - \*\*Tailpipe greenhouse gas emissions from lower-carbon intensity fuels are essentially the same as traditional fuels.
  - \*\*\*Engines with no aftertreatment devices are compatible with higher blends, up to 100% biodiesel (for use of blends higher than 20% biodiesel, consult your Cat dealer).
  - \*\*\*\*For use of blends higher than 20% biodiesel, consult your Cat dealer.

## Air Conditioning System

The air conditioning system on this machine contains the fluorinated greenhouse gas refrigerant R134a or R1234yf. See the label or instruction manual for identification of the gas.

If equipped with R134a (Global Warming Potential = 1430), the system contains 1.134 kg (2.5 lb) of refrigerant which has a CO<sub>2</sub> equivalent of 1.622 metric tonnes (1.787 tons).

## Paint

- Based on best available knowledge, the maximum allowable concentration, measured in parts per million (PPM), of the following heavy metals in paint are:
  - Barium < 0.01%
  - Cadmium < 0.01%
  - Chromium < 0.01%
  - Lead < 0.01%

## Sound Performance

With cooling fan speed at 70% of maximum value:

Operator Sound Pressure Level (ISO 6396:2008) – 74 dB(A)  
Exterior Sound Power Level (ISO 6395:2008) – 109 dB(A)

- The sound level may vary at different engine cooling fan speeds. The cab was properly installed and maintained. The measurements were conducted with the cab doors and the cab windows closed. NOTE: The dynamic operator sound pressure level uncertainty is  $\pm 2$  dB(A).
- Hearing protection may be needed when operating with an open operator station and cab (when not properly maintained or doors/windows open) for extended periods or in a noisy environment.

## Oils and Fluids

- Caterpillar factory fills with ethylene glycol coolants. Cat Diesel Engine Antifreeze/Coolant (DEAC) and Cat Extended Life Coolant (ELC) can be recycled. Consult your Cat dealer for more information.
- Cat Bio HYDO™ Advanced is an EU Ecolabel approved biodegradable hydraulic oil.
- Additional fluids are likely to be present, please consult the Operations and Maintenance Manual or the Application and Installation guide for complete fluid recommendations and maintenance intervals.

## Features and Technology

- The 963 uses up to 10% less fuel per hour than the 963K. The following features and technology may contribute to fuel savings and/or carbon reduction. Features may vary. Consult your Cat dealer for details.
  - Smart mode matches machine power to digging requirements automatically
  - Eco mode minimizes fuel consumption for light applications
  - Emissions reduction technology (when equipped) works in the background, with no action required from the operator
  - Remotely monitor fuel consumption, machine health, location, and hours on demand through Product Link™ and VisionLink™
  - Hydraulic demand fan reduces speed in cooler conditions to conserve power, save fuel and decrease sound levels
  - Remote Flash and Remote Troubleshoot



# 963

## Track Loader Waste Handler/Demolition

***A Waste Handler can take on a variety of tasks in a landfill or transfer station. Use it for pushing, shredding and pre-compacting waste. For added versatility, track loaders are also ideal for creating and maintaining access, digging cells and digging/carrying/spreading cover material.***

### Top Performer

- 963 uses up to 10% less fuel per hour than the previous model.
- Smoother implement and steering response, and improved steering performance provide more controllability.
- Updated cab offers more comfort and an intuitive 10-inch (254 mm) touchscreen dash display.
- Standard High Definition rearview camera shows prominently in the main display.
- Excellent visibility to the bucket and all around the machine enhances safety and helps operators work more confidently.

### Waste Handler

- Specialized guarding, and seals help protect the machine and components from impact and airborne debris.
- Final Drive guarding helps prevent wrapping and damage.
- High debris cooling system with reversing demand fan – radiator fan folds out for easy cleanout access.
- Specialized air handling features help deliver cleaner air to the machine.
- Choice of buckets and track shoes allow you to further optimize the machine for greater performance and service life.

### Enhanced Cleaning Waste Handler

- Helps reduce your clean-out time while adding ground pressure for more compaction.
- Wide gauge undercarriage equipped with a standard track width allows more space for debris to pass between the track roller frame, tracks and chassis.
- With less debris build-up, you spend less time cleaning.
- Helps reduce damage caused by debris carried on the tracks.
- Heavier waste configuration combined with narrower track shoes increases ground pressure for greater compaction.

### Extreme Service Waste Handler or Demolition

- A tough, compact solution, ideal for transfer stations or demolition job sites.
- Added guarding, beyond the Waste Handler package, on lift and tilt cylinders.
- Screen helps protect windshield and operator from breakage and debris.
- Heavy duty bumper and hitch.
- Striker bars.
- Powered cab air precleaner.

# 963 Track Loader – Waste Handler/Demolition Specifications

## Engine

Engine Model	Cat® C7.1	
Emissions	Meets U.S. EPA Tier 4 Final, EU Stage V, Korea Tier 5, China Nonroad Stage IV, Japan 2014 emission standards or India Bharat Stage III, Eurasian Economic Union Stage IIIA, UN ECE R96 Stage IIIA emission standards, equivalent to U.S. EPA Tier 3/ EU Stage IIIA.	
Net Power (1,800 rpm)		
ISO 9249/SAE J1349	151 kW	202 hp
ISO 9249 (DIN)	204 mhp	
Engine Power (1,800 rpm)		
ISO 14396	168 kW	225 hp
ISO 14396 (DIN)	227 mhp	
Bore	105 mm	4.1 in
Stroke	135 mm	5.3 in
Displacement	7.01 L	427.8 in <sup>3</sup>

- Net power advertised is the power available at the engine flywheel when the engine is equipped with a fan, air cleaner, clean emissions module and alternator.
- Advertised power is tested per the specified standard in effect at the time of manufacture.
- Inline six-cylinder diesel engine with single turbo, charged with ATAAC and engine mounted aftertreatment (when equipped).
- No derating required up to 3000 m (9,842 ft) altitude.
- Cat U.S. EPA Tier 4 Final, EU Stage V, Korea Stage V, China Nonroad Stage IV, Japan 2014 engines are required to use ULSD (ultra-low sulfur diesel fuel with 15 ppm of sulfur or less) and are compatible\* with ULSD blended with the following lower-carbon intensity fuels\*\* up to:

- ✓ 20% biodiesel FAME (fatty acid methyl ester)\*\*\*
- ✓ 100% renewable diesel, HVO (hydrotreated vegetable oil) and GTL (gas-to-liquid) fuels

Cat engines meeting Eurasian Economic Union Stage IIIA, UN ECE R96 Stage IIIA emission standards, equivalent to U.S. EPA Tier 3/ EU Stage IIIA, are compatible\* with diesel fuel blended with the following lower-carbon intensity fuels\*\*\* up to:

- ✓ 100% biodiesel FAME (fatty acid methyl ester)\*\*\*\*
- ✓ 100% renewable diesel, HVO (hydrotreated vegetable oil) and GTL (gas-to-liquid) fuels

Refer to guidelines for successful application. Please consult your Cat dealer or “Caterpillar Machine Fluids Recommendations” (SEBU6250) for details.

\*While Caterpillar engines are compatible with these alternative fuels, some regions may not allow their use.

\*\*Tailpipe greenhouse gas emissions from lower-carbon intensity fuels are essentially the same as traditional fuels.

\*\*\*Engines with no aftertreatment devices are compatible with higher blends, up to 100% biodiesel (for use of blends higher than 20% biodiesel, consult your Cat dealer).

\*\*\*\*For use of blends higher than 20% biodiesel, consult your Cat dealer.

## Air Conditioning System

The air conditioning system on this machine contains the fluorinated greenhouse gas refrigerant R134a or R1234yf. See the label or instruction manual for identification of the gas.

If equipped with R134a (Global Warming Potential = 1430), the system contains 1.134 kg (2.5 lb) of refrigerant which has a CO<sub>2</sub> equivalent of 1.622 metric tonnes (1.787 tons).

## Drive System

Description	Electronically controlled Hydrostatic drive with two variable displacement bent axis motors and two variable displacement slipper-type axial piston pumps
Travel Speed	Infinite variable speed from 0 to 10 km/h (0 to 6.2 mph)
Relief Valve Setting	47 500 kPa 6,890 psi

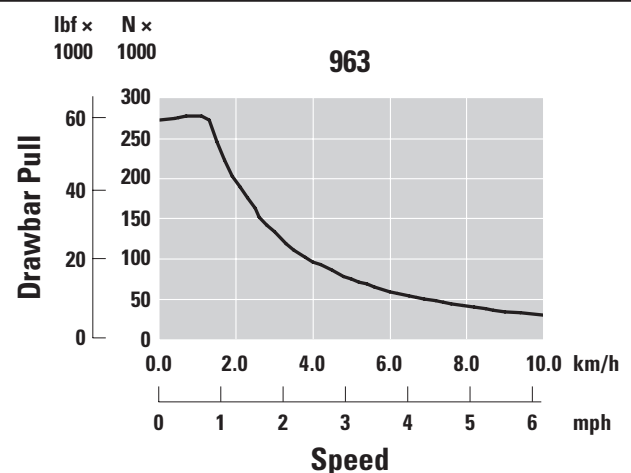
## Implement System

Description	Load sensing, variable displacement piston pump
Maximum Continuous Flow	256 L/min 67.6 gal/min at 1,800 rpm at 1,800 rpm
Maximum Pressure	28 000 kPa 4,061 psi
Filter System	Implement return filter

## Service Refill Capacities

Fuel Tank	320 L	84.5 gal
Diesel Exhaust Fluid (DEF) Tank (when equipped)	16 L	4.2 gal
Cooling System	32 L	8.5 gal
Crankcase (with filter)	16.5 L	4.4 gal
Final Drive (each)	15 L	4.0 gal
Hydraulic Tank	90 L	23.7 gal
Pivot Shaft	1.8 L	0.5 gal

## Drawbar Pull



# 963 Track Loader – Waste Handler/Demolition Specifications

## Standards

### ROPS/FOPS

- ROPS (Rollover Protective Structure) offered by Caterpillar for the machine meets ROPS criteria ISO 3471:2008.
- FOPS (Falling Object Protective Structure) meets ISO 3449:2005 Level II.

### Brakes

- Brakes meet the standard ISO 10265:2008.

### Sound and Vibration Information

- The declared dynamic operator sound pressure level is 74 dB(A) when “ISO 6396:2008” is used to measure the value for an enclosed cab. The measurements were conducted at 70% of the maximum engine cooling fan speed. The sound level may vary at different engine cooling fan speeds. The cab was properly installed and maintained. The measurements were conducted with the cab doors and the cab windows closed. NOTE: The dynamic operator sound pressure level uncertainty is  $\pm 2$  dB(A).
- Hearing protection may be needed when the machine is operated with an open operator station for extended periods, in a noisy environment or with a cab that is not properly maintained.
- The guaranteed exterior sound power level is 109 dB(A) when the value is measured according to the dynamic test procedures and the conditions that are specified in “ISO 6395:2008.” The measurements were conducted at 70% of the maximum engine cooling fan speed. The sound level may vary at different engine cooling fan speeds.
- Sound level information for machines in European Union countries and in countries that adopt the “EU Directives”: If equipped, the certification label is used to verify the environmental sound certification of the machine to the requirements of the European Union. The value that is listed on the label indicates the guaranteed exterior sound power level ( $L_{WA}$ ) at the time of manufacture for the conditions that are specified in “2000/14/EC.”

## Waste Handler

Operating Weight <sup>1</sup>	20 661 kg	45,549 lb
Shipping Weight <sup>2</sup>	18 771 kg	41,383 lb
Track Shoe Width – Standard <sup>3</sup>	550 mm	22.0 in
Track Shoe Width – Narrow <sup>3</sup>	450 mm	18.0 in
Track Rollers – Each Side	7	
Number of Shoes – Each Side	38	
Track on Ground	2542 mm	100.0 in
Ground Pressure – Standard Shoes	63.9 kPa	9.3 psi
Ground Pressure – Narrow Shoes	78.1 kPa	11.3 psi

## Enhanced Cleaning Waste Handler

Operating Weight <sup>1</sup>	21 374 kg	47,122 lb
Shipping Weight <sup>2</sup>	19 484 kg	42,955 lb
Track Shoe Width – Standard <sup>3</sup>	550 mm	22.0 in
Track Shoe Width – Narrow <sup>3</sup>	450 mm	22.0 in
Track Rollers – Each Side	7	
Number of Shoes – Each Side	38	
Track on Ground	2542 mm	100.0 in
Ground Pressure – Standard Shoes	66.1 kPa	9.6 psi
Ground Pressure – Narrow Shoes	80.8 kPa	11.7 psi

## Extreme Service Waste Handler or Demolition

Operating Weight <sup>1</sup>	21 366 kg	47,104 lb
Shipping Weight <sup>2</sup>	19 476 kg	42,937 lb
Track Shoe Width – Standard <sup>3</sup>	550 mm	22.0 in
Track Shoe Width – Narrow <sup>3</sup>	450 mm	22.0 in
Track Rollers – Each Side	7	
Number of Shoes – Each Side	38	
Track on Ground	2542 mm	100.0 in
Ground Pressure – Standard Shoes	66.1 kPa	9.6 psi
Ground Pressure – Narrow Shoes	80.8 kPa	11.7 psi

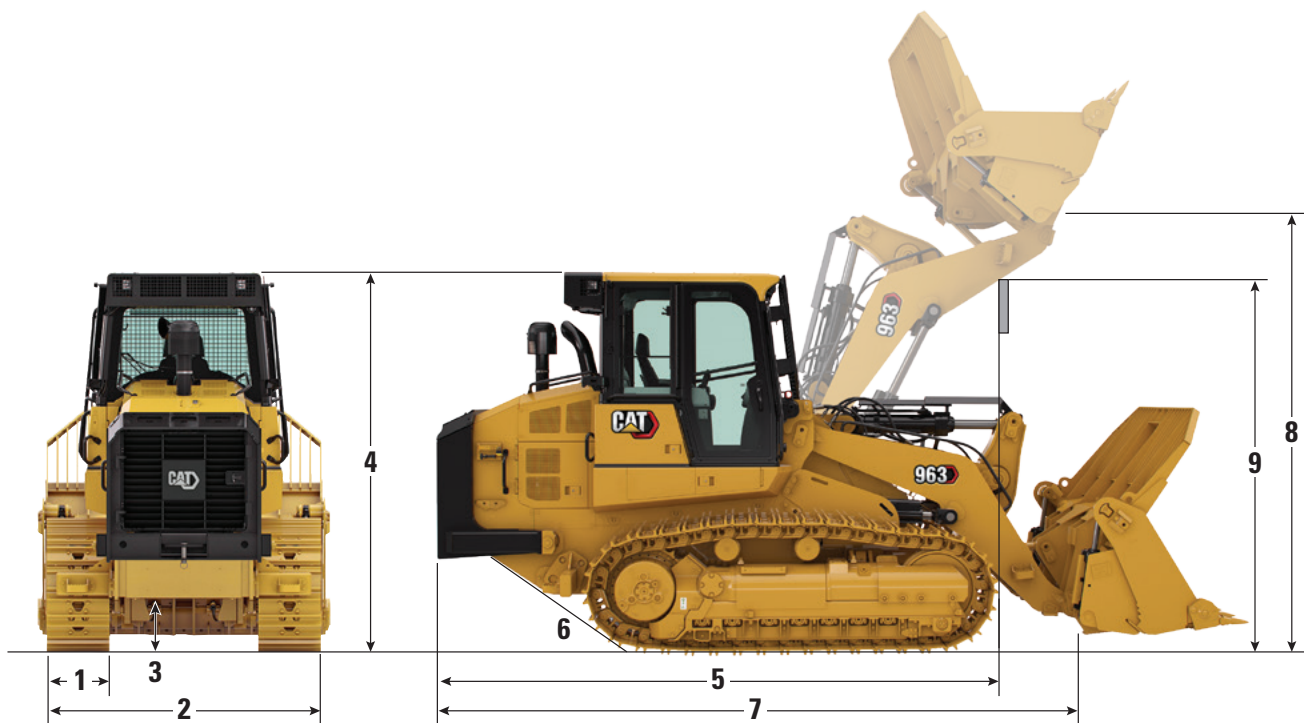
<sup>1</sup>Operating weight: machine with construction package, general purpose landfill bucket with teeth and segments, Heavy Duty Extended Life undercarriage, aftertreatment system, lubricants, 100% fuel tank and 75 kg (165 lb) operator. For machines without aftertreatment, subtract 287 kg (632 lb).

<sup>2</sup>Shipping weight: machine with construction package, Heavy Duty Extended Life undercarriage, aftertreatment system, lubricants, 10% fuel tank, and no bucket. For machines without aftertreatment, subtract 287 kg (632 lb).

<sup>3</sup>Single or double grouser, with or without center holes.

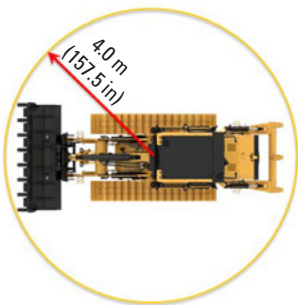
# 963 Track Loader – Waste Handler/Demolition Specifications

## Dimensions



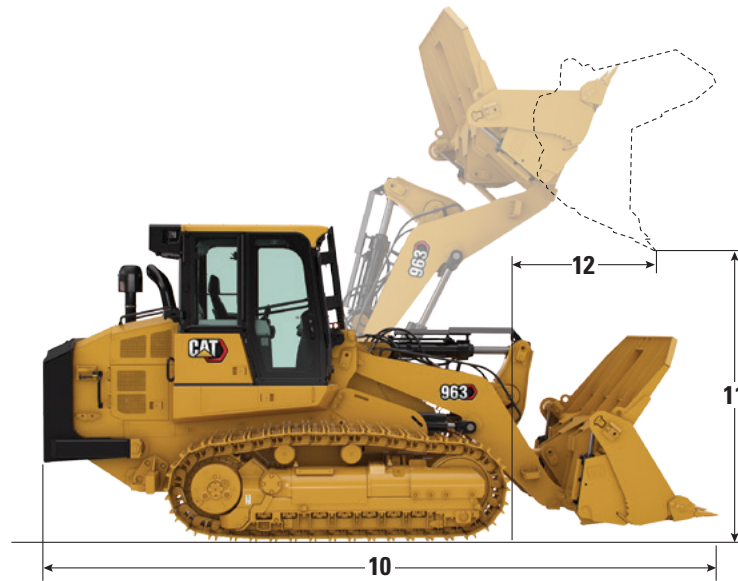
	Waste Handler		Enhanced Cleaning		Extreme Service/ Demolition	
1 Standard Track Shoe Width	550 mm	22.0 in	550 mm	22.0 in	550 mm	22.0 in
2 Overall Machine Width (without bucket)						
Minimum: Standard Gauge (450 mm/17.7 in shoes)	2300 mm	90.5 in	2550 mm	100.4 in	2300 mm	90.5 in
Maximum: Wide Gauge (550 mm/21.7 in shoes)	2400 mm	94.5 in	2650 mm	104.3 in	2400 mm	94.5 in
3 Ground Clearance	471 mm	18.5 in	471 mm	18.5 in	471 mm	18.5 in
4 Machine Height to Top of Cab	3325 mm	130.9 in	3325 mm	130.9 in	3325 mm	130.9 in
5 Machine Length to Front of Tracks	4943 mm	194.6 in	4943 mm	194.6 in	5009 mm	197.2 in
with Ripper, Add	586 mm	23.0 in	586 mm	23 in		
6 Ramp Angle	29°		29°		29°	
7 Overall Length (without bucket)	5841 mm	230 in	5841 mm	230 in	5907 mm	232.6 in
8 Hinge Pin Height at Maximum Lift	3940 mm	155.1 in	3940 mm	155.1 in	3940 mm	155.1 in
9 Lift Arm Clearance at Maximum Lift	3590 mm	141.3 in	3590 mm	141.3 in	3590 mm	141.3 in
Turning Radius	4.0 m	157.5 in	4.1 m	160.0 in	4.0 m	157.5 in

Bucket and attachment offerings may vary. Please consult your Cat dealer for availability.



# 963 Track Loader – Waste Handler/Demolition Specifications

## Buckets



Pin-On Buckets	General Purpose Bucket*		Landfill Bucket**	Performance Bucket**	Flat Floor Bucket*		Multi-Purpose Bucket**	Multi-Purpose Bucket** Landfill
	Long Teeth & Segments	Bolt-On Full Edge	Long Teeth & Segments	Long Teeth & Segments	Welded Flush Adapters, Long Teeth	Wide – Welded Flush Adapters, Long Teeth	Long Teeth & Segments	Long Teeth & Segments
Bucket Weight	1890 kg (4,167 lb)	1739 kg (3,834 lb)	2039 kg (4,491 lb)	1950 kg (4,299 lb)	1596 kg (3,519 lb)	1857 kg (4,094 lb)	2200 kg (4,850 lb)	2458 kg (5,419 lb)
Bucket Width	2571 mm (101.2 in)	2571 mm (101.2 in)	2571 mm (101.2 in)	2671 mm (105.2 in)	2583 mm (101.6 in)	2998 mm (118.1 in)	2575 mm (101.3 in)	2575 mm (101.3 in)
Rated Capacity at 100% Fill Factor <sup>1</sup>	2.5 m <sup>3</sup> (3.2 yd <sup>3</sup> )	2.5 m <sup>3</sup> (3.2 yd <sup>3</sup> )	3.1 m <sup>3</sup> (4.1 yd <sup>3</sup> )	2.8 m <sup>3</sup> (3.7 yd <sup>3</sup> )	2.3 m <sup>3</sup> (3.0 yd <sup>3</sup> )	2.7 m <sup>3</sup> (3.5 yd <sup>3</sup> )	2.0 m <sup>3</sup> (2.6 yd <sup>3</sup> )	2.7 m <sup>3</sup> (3.5 yd <sup>3</sup> )
Rated Capacity at 110% Fill Factor				3.1 m <sup>3</sup> (4.0 yd <sup>3</sup> )				
Rated Operating Capacity <sup>2</sup>	4731 kg (10,431 lb)	4808 kg (10,599 lb)	4682 kg (10,322 lb)	5030 kg (11,090 lb)	4853 kg (10,698 lb)	4761 kg (10,496 lb)	4612 kg (10,168 lb)	4603 kg (10,147 lb)
Static Tipping Load	13 518 kg (29,802 lb)	13 736 kg (30,283 lb)	13 377 kg (29,491 lb)	14 372 kg (31,684 lb)	13 865 kg (30,567 lb)	13 603 kg (29,989 lb)	13 178 kg (29,053 lb)	13 150 kg (28,992 lb)
<b>10</b> Overall Machine Length (bucket on the ground)	6831 mm (268.9 in)	6831 mm (268.9 in)	6831 mm (268.9 in)	6925 mm (272.7 in)	6839 mm (269.2 in)	6839 mm (269.2 in)	6897 mm (271.5 in)	6897 mm (271.5 in)
<b>11</b> Dump Clearance at Maximum Lift and 45° Discharge	3079 mm (121.2 in)	3079 mm (121.2 in)	3076 mm (121.1 in)	2988 mm (117.7 in)	3145 mm (123.8 in)	3145 mm (123.8 in)	2926 mm (115.2 in)	2936 mm (115.2 in)
<b>12</b> Reach at Maximum Lift and 45° Discharge	1231 mm (48.5 in)	1231 mm (48.5 in)	1227 mm (48.3 in)	1281 mm (50.5 in)	1182 mm (46.5 in)	1182 mm (46.5 in)	1077 mm (42.4 in)	1077 mm (42.4 in)
Breakout Force	181 064 N (40,705 lbf)	183 150 N (41,174 lbf)	179 166 N (40,278 lbf)	163 503 N (36,757 lbf)	198 144 N (30,566 lbf)	197 064 N (44,302 lbf)	175 418 N (39,436 lbf)	173 902 N (39,095 lbf)

Note: General construction buckets are compatible with the Waste Handler configuration. Additional buckets and work tool attachments are available. Please consult your Cat dealer for details.

\*Machine equipped with no counterweight.

\*\*Machine equipped with standard and additional counterweights.

<sup>1</sup>Volumetric bucket capacity as per ISO 7546:1983.

<sup>2</sup>Rated Operating Capacity should be considered with 35% Static Tipping Load as required by ISO 14397-1:2007.

# 963 Track Loader – Waste Handler/Demolition Specifications

## Track

Track Shoe Width	Grousers	Features
<b>Heavy Duty Sealed and Lubricated</b>		
450 mm (18 in)	Double	
450 mm (18 in)	Double	Center Hole
460 mm (18 in)	Single	Center Hole
550 mm (22 in)	Double	
550 mm (22 in)	Double	Center Hole
560 mm (22 in)	Single	Extreme Service, Center Hole
800 mm (31 in)	Double	Wide Gauge

### Grouser Selection

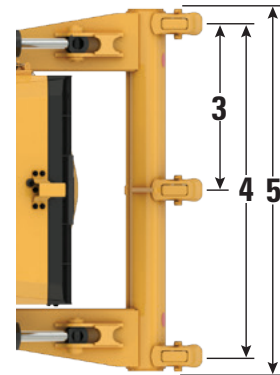
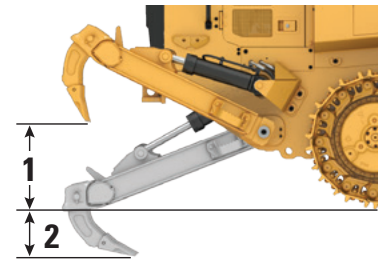
Single Grouser – maximizes shredding effect

Double Grouser – best balance of traction and maneuverability

Center Holes – Helps reject material, helping to reduce build-up and added track tension.

## Ripper

Type	Radial	
Weight	795 kg	1,753 lb
<b>1</b> Maximum Clearance Raised (shank tip)	873 mm	34.4 in
<b>2</b> Maximum Penetration	274 mm	10.8 in
<b>3</b> Pocket Spacing	896 mm	35.3 in
<b>4</b> Shank Gauge	1792 mm	70.6 in
<b>5</b> Overall Ripping Width	1955 mm	77.0 in
Beam Cross Section	203 mm × 165 mm	8.0 in × 6.5 in
Maximum Penetration Force	176 kN	39,646 lbf
Maximum Pry Out Force	85 kN	19,038 lbf



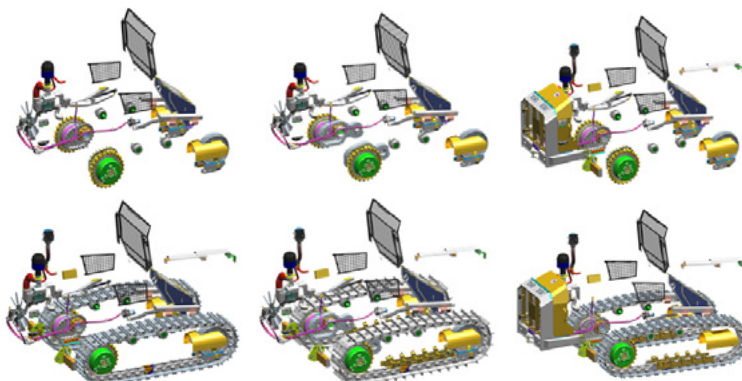
# 963 Track Loader – Waste Handler/Demolition Specifications

## Waste Handler Features

✓ Included

★ Recommended

● Compatible



Feature	Waste Handler	Enhanced Cleaning	Extreme Service/ Demolition
Windshield Protection	✓	✓	✓
Idler Guard	✓	✓	✓
Lift Cylinder Guard	✓	✓	✓
Tilt Cylinder Guard	★	★	✓
Final Drive Duo Cone Seal Guard to protect against wire wrapping	✓	✓	✓
Final Drive Bottom Guard	★	★	
Final Drive Top and Bottom Guard	★	★	✓
Full Length Guard	●	★	★
Striker Bars	●	★	✓
Programmable Reversing Fan (Frequency and Duration) with fixed blade pitch and reversed rotation	✓	✓	✓
Dual-Stage Engine Air Pre-Cleaner with Turbine	✓	✓	✓
Cab Air Precleaner With Powered Turbine to eject debris	★	★	✓
450 mm (18 in) or 550 mm (22 in) Heavy Duty Tracks with Center Holes	★	★	★
Ripper	●	●	
Light Counterweight	●	●	
Additional Counterweight	●	●	
Latches on Rear Guard	✓	✓	✓
Heavy-duty Bumper			✓
Quick Coupler Lines	●	●	●
Additional Lights – two additional LED lights at bottom of cab, underhood light	●	●	●

# 963 Waste Handler/Demolition Standard and Optional Equipment

## Standard and Optional Equipment

Standard and optional equipment may vary. Consult your Cat dealer for details.

	Standard	Optional		Standard	Optional
<b>POWER TRAIN</b>			<b>ELECTRICAL</b>		
Cat C7.1 diesel engine with engine-mounted aftertreatment to meet U.S. EPA Tier 4 Final, EU Stage V, Korea Tier 5, China Nonroad Stage IV, Japan 2014 emission standards		✓	Ground Level Service Center	✓	
Cat C7.1 diesel engine to meet India Bharat Stage III, Eurasian Economic Union Stage IIIA, UN ECE R96 Stage IIIA emission standards, equivalent to Tier 3/Stage IIIA		✓	24 volt heavy-duty alternator	✓	
Engine turbocharger	✓		Backup alarm	✓	
Air-To-Air After Cooler (ATAAC)	✓		Two horns	✓	
Modular cooling system for engine air intake, oil and water	✓		Two heavy-duty batteries, high output, maintenance free, 1,120 CCA	✓	
Hydraulic demand fan – electronically controlled, temperature sensing	✓		Main disconnect switch	✓	
Hydraulic fan, reversing	✓		Electric starter (heavy-duty, 24 volt)	✓	
Electro Hydrostatic Control (EHC) for transmission	✓		Extra lighting. Two additional LED lights at the bottom of cab facing forward plus one underhood light		✓
Engine idle shutdown	✓		LED flashing beacon		✓
Auto engine speed control	✓		<b>OPERATOR ENVIRONMENT</b>		
Electric fuel pump	✓		Pressurized, sound suppressed, ROPS/FOPS Cab with tinted glass and right side sliding window	✓	
Water separator	✓		Cab package with one sliding side window and four halogen lights: two facing forward, roof mounted, two facing rearward, integrated in the air conditioner unit		✓
Glow plug starting aid	✓		Deluxe cab package with two sliding side windows and eight LED lights: four roof-mounted facing forward, two facing rearward and two facing side integrated in the air conditioner unit		✓
Engine air cleaner		✓	Deluxe high back seat – heated, with adjustable shock control		✓
Engine air precleaner		✓	Premium Plus high back seat – heated and cooled, lockable side-side isolator		✓
<b>UNDERCARRIAGE</b>			Adjustable armrests	✓	
Heavy Duty Extended Life (HDXL) undercarriage and tracks (38 sections), 1850 mm (72.8 in) track gauge	✓		Electro Hydraulic, seat mounted control levers with faster processing	✓	
Oscillating track roller frames	✓		V-pattern and pedal steering controls		✓
Track guiding guards, end section	✓		Joystick steering controls		✓
Hydraulic track adjuster	✓		Joystick implement control		✓
Sprocket rims with replaceable bolt-on tough steel segments	✓		Two-lever implement control		✓
Sprocket guards	✓		Seat belt, retractable, with buckling indicator on dash	✓	
Seven track rollers per side, with two upper carrier rollers, lifetime lubricated	✓		Four-point restraint ready seat	✓	
Idlers, conventional type, lifetime lubricated	✓		Air conditioning and heating	✓	
			Heater/defroster with automatic temperature control and automatic blower control	✓	
			Cab air powered precleaner		✓
			Rearview mirror, inside, adjustable	✓	

(continued on next page)

# 963 Waste Handler/Demolition Standard and Optional Equipment

## Standard and Optional Equipment *(continued)*

Standard and optional equipment may vary. Consult your Cat dealer for details.

	Standard	Optional		Standard	Optional
<b>OPERATOR ENVIRONMENT <i>(continued)</i></b>			<b>OTHER STANDARD EQUIPMENT</b>		
Radio ready. Includes speakers, antenna and 12 V power outlet and 5 V USB port	✓		Durable metal fender	✓	
Radio – FM Ready Kit		✓	Exterior sound suppression	✓	
Radio – Bluetooth & Aux & Mic		✓	Load sensing implement pump with variable displacement	✓	
Radio – Bluetooth & Aux & Mic – <b>Dab+</b>		✓	Z-bar loader linkage	✓	
Radio – Bluetooth & Aux & Mic – <b>Sirius</b>		✓	Implement cylinders with sensors	✓	
Parking brake switch and “brake-on” indicator light	✓		Engine enclosure with lockable doors	✓	
Implement lock-out switch	✓		Debris resistant radiator core (six fins-per-inch)	✓	
High Definition rearview camera	✓		Hinged radiator guard with latch and swing out fan	✓	
254 mm (10 in) color touchscreen display with integrated rear camera display and machine slope indicator	✓		4 × 2 easy tie-down points on chassis	✓	
Three selectable working modes (Auto, Power, Eco)	✓		<b>FEATURE PACKAGES</b>		
Operator programmable lift and tilt kickouts	✓		Waste Package		✓
Machine Pitch and Roll indicate	✓		Extreme Service Waste Package		✓
Bucket shake	✓		Enhanced Cleaning Waste Package		✓
Remote services (Troubleshoot/Remote Flash)		✓	<b>GUARDING</b>		
Heavy-duty rubber floor mat	✓		Full bottom guards	✓	
Windshield washers and wipers, multiple speed, front and rear	✓		Idler guard (none)		✓
Durable metal roof	✓		Idler guard		✓
Coat hook	✓		Idler guard – ship hold		✓
Storage compartments under left armrest	✓		Front light guard		✓
Document holder on right console	✓		Windshield guard		✓
			Lift cylinder guard		✓
			Tilt cylinder guard		✓
			Final drive duo cone seal guard	✓	
			Two-piece final drive guard		✓
			Three-piece final drive guard		✓
			Final drive bottom guard		✓
			Track roller guard		✓

*(continued on next page)*

# 963 Waste Handler/Demolition Standard and Optional Equipment

## Standard and Optional Equipment *(continued)*

Standard and optional equipment may vary. Consult your Cat dealer for details.

	Standard	Optional		Standard	Optional
<b>BUCKETS*</b>			<b>MAINTENANCE</b>		
Heavy-duty landfill bucket – 3.1 m <sup>3</sup> (4.0 yd <sup>3</sup> )		✓	Standard lubricant		✓
Multi-purpose heavy-duty landfill bucket – 2.7 m <sup>3</sup> (3.5 yd <sup>3</sup> )		✓	Bio lubricant		✓
General purpose – 2.5 m <sup>3</sup> (3.25 yd <sup>3</sup> )		✓	Cat extended life coolant	✓	
General purpose with welded flush adaptor – 2.3 m <sup>3</sup> (3.0 yd <sup>3</sup> )		✓	Service package		✓
Heavy-duty general purpose – 2.5 m <sup>3</sup> (3.25 yd <sup>3</sup> )		✓	Extended service package – manual hydraulic system enabling cab tilt and lock at 30 degrees safely in the field, shovel holder bracket (shovel not included)		✓
Multi-purpose – 2.0 m <sup>3</sup> (2.6 yd <sup>3</sup> )		✓	High speed oil change		✓
Heavy-duty multi-purpose – 2.0 m <sup>3</sup> (2.6 yd <sup>3</sup> )		✓	Ecology drains on hydraulic oil tank	✓	
General purpose with full bolted cutting edge – 2.5 m <sup>3</sup> (3.25 yd <sup>3</sup> )		✓	Oil sampling valves	✓	
Performance general purpose – 2.8 m <sup>3</sup> (3.7 yd <sup>3</sup> )		✓	Cat XT hoses	✓	
Wide flush general purpose – 2.9 m <sup>3</sup> (3.8 yd <sup>3</sup> )		✓	HYDO Advanced 10	✓	
Quick coupler, general purpose – 2.3 m <sup>3</sup> (3.0 yd <sup>3</sup> )		✓	Implement oil return filter in hydraulic tank	✓	
Quick coupler, general purpose LGP – 2.7 m <sup>3</sup> (3.5 yd <sup>3</sup> )		✓	<b>REAR ATTACHMENTS</b>		
No bucket		✓	Bumper		✓
Note: All buckets (excluding General Purpose with full bolted cutting edge) feature Advansys Ground Engaging Tools.			Ripper		✓
			No bumper		✓
			Ripper hitch		✓
			Striker bars		✓
			<b>COUNTERWEIGHTS</b>		
			Light counterweight 320 kg (705 lb)		✓
			Light counterweight, additional 310 kg (683 lb)		✓
			<b>OTHER EQUIPMENT</b>		
			Access package		✓
			Jacket water heater (110 V)		✓
			Jacket water heater (240 V)		✓
			Fusion Quick Coupler		✓
			<b>TECHNOLOGY PRODUCTS</b>		
			Product Link ready	✓	
			Product Link cellular		✓
			Product Link dual (cellular and satellite)		✓
			Cat Payload		✓
			Grade Control mast		✓

\*Bucket and attachment offerings may vary. Please consult your Cat dealer for availability.



# 963

## Track Loader Ship Hold

***Traction, balance and agility are among the key characteristics that make track loaders ideal for ship hold work. Add in speed, reach, visibility and capability to use a variety of attachments, and track loaders become the top choice for unloading bulk carriers.***

### Track Loader Advantages

- Machine balance
- Maneuverability, especially in tight spaces
- Smooth, responsive controls
- Ability to work on slopes
- Undercarriage provides excellent traction and smooth ride over rough, loose or uneven surfaces
- Low ground pressure
- Excellent visibility, now with rear vision camera
- Quiet, sound suppressed cab
- Adjustable, air suspension seat for operator comfort
- Ease of maintenance and cooling system cleanout
- High reach for scraping down walls or loading
- Attachment versatility

Please consult with your Cat dealer regarding Ship Hold package availability.

### Ship Hold Features

- A set of durable lifting eyes designed and validated with ISO 15818:2017 provide fast and safe loading into the hold.
- Widely spaced lifting eyes provide stability during the lift.
- Steps for easy access to the cab from the front and the rear
- stability during the lift.
- Guarding helps protect the tilt cylinder rod from debris and impact.
- Thicker hydraulic tank guards.
- Optional center hole shoes reduce track packing and track chain tightening which extends undercarriage life.

### Attachment Versatility

- Trim blade or two-way dozer
- General purpose buckets
- Multi-purpose buckets
- Fusion™ Quick Coupler option lets you make fast attachment changes with a wide range of tools like forks, buckets, etc. from wheel loaders and other Fusion compatible machines.

# 963 Track Loader – Ship Hold Specifications

## Engine

Engine Model	Cat® C7.1	
Emissions	Meets U.S. EPA Tier 4 Final, EU Stage V, Korea Tier 5, China Nonroad Stage IV, Japan 2014 emission standards or India Bharat Stage III, Eurasian Economic Union Stage IIIA, UN ECE R96 Stage IIIA emission standards, equivalent to U.S. EPA Tier 3/ EU Stage IIIA.	
Net Power (1,800 rpm)		
ISO 9249/SAE J1349	151 kW	202 hp
ISO 9249 (DIN)	204 mhp	
Engine Power (1,800 rpm)		
ISO 14396	168 kW	225 hp
ISO 14396 (DIN)	227 mhp	
Bore	105 mm	4.1 in
Stroke	135 mm	5.3 in
Displacement	7.01 L	427.8 in <sup>3</sup>

- Net power advertised is the power available at the engine flywheel when the engine is equipped with a fan, air cleaner, clean emissions module and alternator.
- Advertised power is tested per the specified standard in effect at the time of manufacture.
- Inline six-cylinder diesel engine with single turbo, charged with ATAAC and engine mounted aftertreatment (when equipped).
- No derating required up to 3000 m (9,842 ft) altitude.
- Cat U.S. EPA Tier 4 Final, EU Stage V, Korea Stage V, China Nonroad Stage IV, Japan 2014 engines are required to use ULSD (ultra-low sulfur diesel fuel with 15 ppm of sulfur or less) and are compatible\* with ULSD blended with the following lower-carbon intensity fuels\*\* up to:

- ✓ 20% biodiesel FAME (fatty acid methyl ester)\*\*\*
- ✓ 100% renewable diesel, HVO (hydrotreated vegetable oil) and GTL (gas-to-liquid) fuels

Cat engines meeting Eurasian Economic Union Stage IIIA, UN ECE R96 Stage IIIA emission standards, equivalent to U.S. EPA Tier 3/ EU Stage IIIA, are compatible\* with diesel fuel blended with the following lower-carbon intensity fuels\*\*\* up to:

- ✓ 100% biodiesel FAME (fatty acid methyl ester)\*\*\*\*
- ✓ 100% renewable diesel, HVO (hydrotreated vegetable oil) and GTL (gas-to-liquid) fuels

Refer to guidelines for successful application. Please consult your Cat dealer or “Caterpillar Machine Fluids Recommendations” (SEBU6250) for details.

\*While Caterpillar engines are compatible with these alternative fuels, some regions may not allow their use.

\*\*Tailpipe greenhouse gas emissions from lower-carbon intensity fuels are essentially the same as traditional fuels.

\*\*\*Engines with no aftertreatment devices are compatible with higher blends, up to 100% biodiesel (for use of blends higher than 20% biodiesel, consult your Cat dealer).

\*\*\*\*For use of blends higher than 20% biodiesel, consult your Cat dealer.

## Air Conditioning System

The air conditioning system on this machine contains the fluorinated greenhouse gas refrigerant R134a or R1234yf. See the label or instruction manual for identification of the gas.

If equipped with R134a (Global Warming Potential = 1430), the system contains 1.134 kg (2.5 lb) of refrigerant which has a CO<sub>2</sub> equivalent of 1.622 metric tonnes (1.787 tons).

## Drive System

Description	Electronically controlled Hydrostatic drive with two variable displacement bent axis motors and two variable displacement slipper-type axial piston pumps
Travel Speed	Infinite variable speed from 0 to 10 km/h (0 to 6.2 mph)
Relief Valve Setting	47 500 kPa 6,890 psi

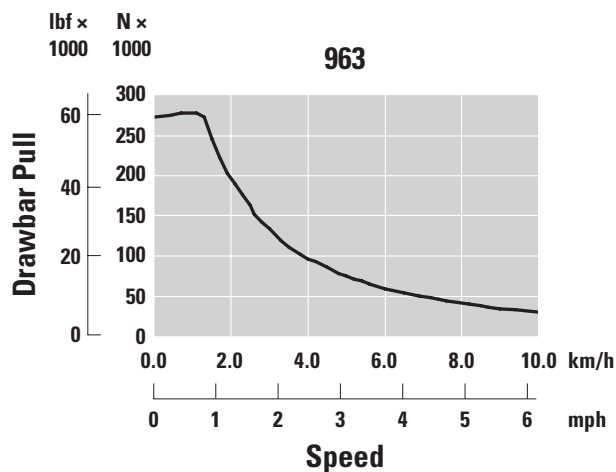
## Implement System

Description	Load sensing, variable displacement piston pump
Maximum Continuous Flow	256 L/min 67.6 gal/min at 1,800 rpm at 1,800 rpm
Maximum Pressure	28 000 kPa 4,061 psi
Filter System	Implement return filter

## Service Refill Capacities

Fuel Tank	320 L	84.5 gal
Diesel Exhaust Fluid (DEF) Tank (when equipped)	16 L	4.2 gal
Cooling System	32 L	8.5 gal
Crankcase (with filter)	16.5 L	4.4 gal
Final Drive (each)	15 L	4.0 gal
Hydraulic Tank	90 L	23.7 gal
Pivot Shaft	1.8 L	0.5 gal

## Drawbar Pull



# 963 Track Loader – Ship Hold Specifications

## Track

Track Shoe Width – Heavy Duty Sealed and Lubricated	Grousers	Features
450 mm (18 in)	Double	—
450 mm (18 in)	Double	Center Hole
460 mm (18 in)	Single	Center Hole
550 mm (22 in)	Double	—
550 mm (22 in)	Double	Center Hole
560 mm (22 in)	Single	Extreme Service, Center Hole

## Weights and Dimensions

Operating Weight <sup>1</sup>	22 040 kg	48,590 lb
Shipping Weight <sup>2</sup>	18 822 kg	41,495 lb
Track Shoe Width – Standard <sup>3</sup>	550 mm	22 in
Track Shoe Width – Narrow <sup>3</sup>	450 mm	18 in
Track Rollers – Each Side	7	
Number of Shoes – Each Side	38	
Track on Ground	2542 mm	100 in
Ground Pressure – Standard Shoes	68.2 kPa	9.9 psi
Ground Pressure – Narrow Shoes	83.3 kPa	12.1 psi

<sup>1</sup>Operating weight: machine with construction package, trim blade, Heavy Duty Extended Life undercarriage, aftertreatment system, lubricants, 100% fuel tank and 75 kg (165 lb) operator. For machines without aftertreatment, subtract 287 kg (632 lb).

<sup>2</sup>Shipping weight: machine with construction package, Heavy Duty Extended Life undercarriage, aftertreatment system, lubricants, 10% fuel tank and no blade/bucket. For machines without aftertreatment, subtract 287 kg (632 lb).

<sup>3</sup>Single or double grouser, with or without center holes.

## Standards

### ROPS/FOPS

- ROPS (Rollover Protective Structure) offered by Caterpillar for the machine meets ROPS criteria ISO 3471:2008.
- FOPS (Falling Object Protective Structure) meets ISO 3449:2005 Level II.

### Brakes

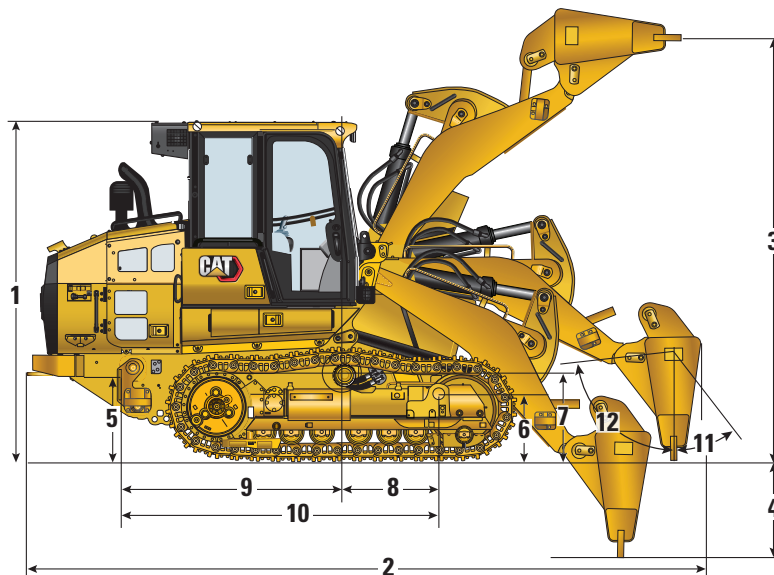
- Brakes meet the standard ISO 10265:2008.

### Sound and Vibration Information

- The declared dynamic operator sound pressure level is 74 dB(A) when “ISO 6396:2008” is used to measure the value for an enclosed cab. The measurements were conducted at 70% of the maximum engine cooling fan speed. The sound level may vary at different engine cooling fan speeds. The cab was properly installed and maintained. The measurements were conducted with the cab doors and the cab windows closed. NOTE: The dynamic operator sound pressure level uncertainty is  $\pm 2$  dB(A).
- Hearing protection may be needed when the machine is operated with an open operator station for extended periods, in a noisy environment or with a cab that is not properly maintained.
- The guaranteed exterior sound power level is 109 dB(A) when the value is measured according to the dynamic test procedures and the conditions that are specified in “ISO 6395:2008.” The measurements were conducted at 70% of the maximum engine cooling fan speed. The sound level may vary at different engine cooling fan speeds.
- Sound level information for machines in European Union countries and in countries that adopt the “EU Directives”: If equipped, the certification label is used to verify the environmental sound certification of the machine to the requirements of the European Union. The value that is listed on the label indicates the guaranteed exterior sound power level ( $L_{WA}$ ) at the time of manufacture for the conditions that are specified in “2000/14/EC.”

# 963 Track Loader – Ship Hold Specifications

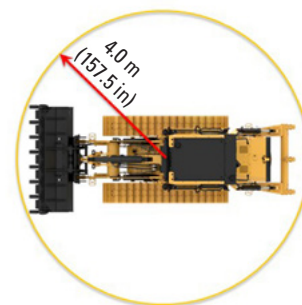
## Dimensions



Dimensions (without rear bumper)	Pin-On Coal Blade		Pin-On Iron Ore Blade		Fusion Quick Coupler Blade	
<b>1</b> Overall Height	3323 mm	130.8 in	3323 mm	130.8 in	3323 mm	130.8 in
<b>2</b> Overall Length	6655 mm	262.0 in	6614 mm	260.4 in	6759 mm	266.1 in
<b>3</b> Work Tool Cutting Edge Height Fully Raised	4399 mm	173.2 in	4391 mm	172.9 in	4451 mm	175.2 in
<b>4</b> Digging Depth – Fully Tilted Fully Retracted	1082 mm	42.6 in	910 mm	35.8 in	1113 mm	43.8 in
<b>4</b> Digging Depth – Blade Vertical	1145 mm	45.1 in	907 mm	35.7 in	1212 mm	47.7 in
Overall Width – with 450 mm (18 in) shoes	2300 mm	90.6 in	2300 mm	90.6 in	2300 mm	90.6 in
Overall Width – with 550 mm (21 in) shoes	2400 mm	94.5 in	2400 mm	94.5 in	2400 mm	94.5 in
Blade Width	3158 mm	124.3 in	3178 mm	125.0 in	3108 mm	122.4 in
<b>5</b> Rear Lifting Eye Height	848 mm	33.4 in	848 mm	33.4 in	848 mm	33.4 in
<b>6</b> Front Lifting Eye Height	673 mm	26.5 in	673 mm	26.5 in	673 mm	26.5 in
Center of Gravity Dimensions						
<b>7</b> Center of Gravity Height	786.7 mm	31.0 in	765 mm	30.1 in	814 mm	32.0 in
<b>8</b> Center of Gravity to Front Eye	689 mm	27.1 in	700 mm	27.6 in	589 mm	23.2 in
<b>9</b> Center of Gravity to Rear Eye	2514 mm	99.0 in	2502 mm	98.5 in	2613 mm	102.9 in
<b>10</b> Distance from Rear to Front Lifting Eyes	3202 mm	126.1 in	3202 mm	126.1 in	3202 mm	126.1 in
<b>11</b> Trim Blade Pitch – Forward	87°		84°		87°	
<b>12</b> Trim Blade Pitch – Rearward	23°		23°		30°	
Turning Radius	4.0 m	157.5 in	4.0 m	157.5 in	4.0 m	157.5 in

## Blades

Trim Blades	Pin-On Coal Blade		Pin-On Iron Ore		Fusion Quick Coupler Blade	
Blade Weight	2908 kg	6,411 lb	2900 kg	6,393 lb	2927 kg	6,453 lb
Blade Width	3158 mm	124 in	3178 mm	125 in	3108 mm	122 in
Blade Height	1397 mm	54.2 in	1195 mm	47.0 in	1397 mm	54.2 in
Blade Surface	4.4 m <sup>2</sup>	47.5 ft <sup>2</sup>	3.8 m <sup>2</sup>	40.9 ft <sup>2</sup>	4.3 m <sup>2</sup>	46.7 ft <sup>2</sup>



# 963 Track Loader – Ship Hold Specifications

## Buckets

Pin-On Buckets	General Purpose Bucket*		Performance Bucket**	Flat Floor Buckets*		Multi-Purpose Bucket**
Cutting Edge Type	Long Teeth & Segments	Bolt-On Full Edge	Long Teeth & Segments	Welded Flush Adapters, Long Teeth	Wide – Welded Flush Adapters, Long Teeth	Long Teeth & Segments
Bucket Weight	1890 kg (4,167 lb)	1739 kg (3,834 lb)	1950 kg (4,299 lb)	1596 kg (3,519 lb)	1857 kg (4,094 lb)	2200 kg (4,850 lb)
Bucket Width	2571 mm (101.2 in)	2571 mm (101.2 in)	2671 mm (105.2 in)	2583 mm (101.6 in)	2998 mm (118.1 in)	2575 mm (101.3 in)
Rated Capacity at 100% Fill Factor <sup>1</sup>	2.5 m <sup>3</sup> (3.2 yd <sup>3</sup> )	2.5 m <sup>3</sup> (3.2 yd <sup>3</sup> )	2.8 m <sup>3</sup> (3.7 yd <sup>3</sup> )	2.3 m <sup>3</sup> (3.0 yd <sup>3</sup> )	2.7 m <sup>3</sup> (3.5 yd <sup>3</sup> )	2.0 m <sup>3</sup> (2.6 yd <sup>3</sup> )
Rated Capacity at 110% Fill Factor			3.1 m <sup>3</sup> (4.0 yd <sup>3</sup> )			
Rated Operating Capacity <sup>2</sup>	4731 kg (10,431 lb)	4808 kg (10,599 lb)	5015 kg (11,057 lb)	4853 kg (10,698 lb)	4761 kg (10,496 lb)	4612 kg (10,169 lb)
Static Tipping Load	13 518 kg (29,802 lb)	13 736 kg (30,283 lb)	14 372 kg (31,684 lb)	13 865 kg (30,567 lb)	13 603 kg (29,989 lb)	13 178 kg (29,053 lb)
Overall Machine Length (bucket on the ground)	6831 mm (268.9 in)	6831 mm (268.9 in)	6925 mm (272.7 in)	6839 mm (269.2 in)	6839 mm (269.2 in)	6897 mm (271.5 in)
Dump Clearance at Maximum Lift and 45° Discharge	3079 mm (121.2 in)	3079 mm (121.2 in)	2988 mm (117.7 in)	3145 mm (123.8 in)	3145 mm (123.8 in)	2926 mm (115.2 in)
Reach at Maximum Lift and 45° Discharge	1231 mm (48.5 in)	1231 mm (48.5 in)	1281 mm (50.5 in)	1182 mm (46.5 in)	1182 mm (46.5 in)	1077 mm (42.4 in)
Breakout Force	181 064 N (40,705 lbf)	183 150 N (41,174 lbf)	163 503 N (36,757 lbf)	198 144 N (30,566 lb)	197 064 N (44,302 lb)	175 418 N (39,436 lbf)

Bucket and attachment offerings may vary. Please consult your Cat dealer for availability.

Fusion Quick Coupler Buckets	Fusion Buckets			
Cutting Edge Type	Long Teeth & Segments		Wide, Long Teeth & Segments	
Bucket Weight	1742 kg	3,840 lb	2036 kg	4,488 lb
Bucket Width	2571 mm	101.2 in	2998 mm	118.1 in
Rated Capacity at 100% Fill Factor <sup>1</sup>	2.3 m <sup>3</sup>	3.0 yd <sup>3</sup>	2.7 m <sup>3</sup>	3.5 yd <sup>3</sup>
Rated Operating Capacity <sup>2</sup>	4638 kg	10,225 lb	4632 kg	10,211 lb
Static Tipping Load <sup>3</sup>	13 250 kg	29,895 lb	13 233 kg	29,173 lb
Overall Machine Length (bucket on the ground)	6956 mm	273.9 in	6956 mm	273.9 in
Dump Clearance at Maximum Lift and 45° Discharge	3045 mm	119.9 in	3045 mm	119.9 in
Reach at Maximum Lift and 45° Discharge	1193 mm	47 in	1193 mm	47 in
Breakout Force	180 114 N	40,191 lbf	178 201 N	40,061 lbf

For maximum versatility, the Fusion coupler is compatible with a range of buckets, forks, rakes, material handling arm and more. Consult with your Cat dealer for compatibility.

\*Machine equipped with no counterweight.

\*\*Machine equipped with standard and additional counterweights.

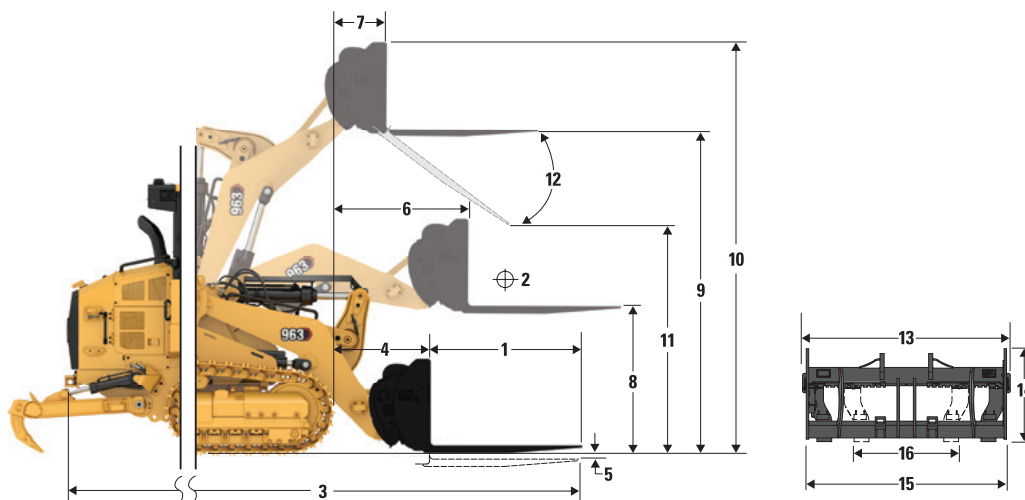
<sup>1</sup>Volumetric bucket capacity as per ISO 7546:1983.

<sup>2</sup>Rated Operating Capacity should be considered with 35% Static Tipping Load as required by ISO 14397-1:2007.

<sup>3</sup>Machine equipped with standard and additional counterweights.

# 963 Track Loader – Ship Hold Specifications

## Operating Specifications with Pallet Forks



963 Track Loader*	48-in Tines		60-in Tines		72-in Tines		84-in Tines		96-in Tines	
	mm	in	mm	in	mm	in	mm	in	mm	in
1 Tine Length	1219	48.0	1524	60.0	1829	72.0	2134	84.0	2438	96.0
2 Load Center	609	24.0	762	30.0	914	36.0	1067	42.0	1219	48.0
3 Maximum Overall Length	7186	282.9	7492	295.0	7796	306.9	8101	318.9	8406	330.9
4 Reach with Forks at Ground Level	1182	46.5	1182	46.5	1182	46.5	1182	46.5	1182	46.5
5 Dig Depth	-57	-2.2	-57	-2.2	-57	-2.2	-57	-2.2	-57	-2.2
6 Reach with Arms Horizontal and Fork Level	1709	67.3	1709	67.3	1709	67.3	1709	67.3	1709	67.3
7 Reach with Fork at Maximum Height	907	35.7	907	35.7	907	35.7	907	35.7	907	35.7
8 Ground to Top of Tine with Arms Horizontal and Fork Level	1772	69.7	1772	69.7	1772	69.7	1772	69.7	1772	69.7
9 Ground to Top of Tine at Maximum Height and Fork Level	3791	149.3	3791	149.3	3791	149.3	3791	149.3	3791	149.3
10 Overall Height of Fork at Full Lift (top of carriage to ground)	4831	190.2	4831	190.2	4831	190.2	4831	190.2	4831	190.2
11 Clearance at Full Lift and Maximum Dump	2505	98.6	2259	88.9	2014	79.3	1768	69.6	1523	59.9
12 Maximum Discharge Angle from Horizontal	-54°		-54°		-54°		-54°		-54°	
13 Overall Carriage Width	2528	99.5	2528	99.5	2528	99.5	2528	99.5	2528	99.5
14 Overall Carriage Height	1130	44.5	1130	44.5	1130	44.5	1130	44.5	1130	44.5
15 Outside Tine Width (maximum spread)	2178	85.7	2178	85.7	2178	85.7	2178	85.7	2178	85.7
16 Outside Tine Width (minimum spread)	576	22.7	576	22.7	576	22.7	576	22.7	576	22.7
Tine Width (single tine)	180	7.1	180	7.1	180	7.1	180	7.1	180	7.1
Tine Thickness	90.0	3.5	90.0	3.5	90.0	3.5	90.0	3.5	90.0	3.5
	kg	lb	kg	lb	kg	lb	kg	lb	kg	lb
Tine Load Capacity (Per Pair)	22 200	48,942.6	17 800	39,242.3	14 800	32,628.4	12 700	27,998.7	11 300	24,912.2
Static Tipping Load Arm Horizontal and Fork Level	9011	19,866.9	8501	18,740.5	8017	17,674.9	7573	16,695.4	7204	15,882.5
Static Lifting Capacity Arm Horizontal and Fork Level	11 748	25,899.7	11 627	25,632.4	10 867	23,958.5	9692	21,366.4	8738	19,264.0
Rated Load (SAE J1197) **	3154	6,953.4	2975	6,559.2	2806	6,186.2	2651	5,843.4	2521	5,558.9

\*Construction configuration with 450 mm (17.7 in) heavy duty tracks, standard counterweight (320 kg/705 lb) and additional counterweight (310 kg/683 lb).

\*\*For crawler loaders, 35% of the tipping load or 100% of the lifting capacity, whichever is less. (SAE J1197:2011, EN474-3:2022, ISO 14397-1:2007).

Bucket and attachment offerings may vary. Please consult your Cat dealer for availability.

# 963 Ship Hold Standard and Optional Equipment

## Standard and Optional Equipment

Standard and optional equipment may vary. Consult your Cat dealer for details.

	Standard	Optional		Standard	Optional
<b>POWER TRAIN</b>			<b>ELECTRICAL</b>		
Cat C7.1 diesel engine with engine-mounted aftertreatment to meet U.S. EPA Tier 4 Final, EU Stage V, Korea Tier 5, China Nonroad Stage IV, Japan 2014 emission standards		✓	Ground Level Service Center	✓	
Cat C7.1 diesel engine to meet India Bharat Stage III, Eurasian Economic Union Stage IIIA, UN ECE R96 Stage IIIA emission standards, equivalent to Tier 3/Stage IIIA		✓	24 volt heavy-duty alternator	✓	
Engine turbocharger	✓		Backup alarm	✓	
Air-To-Air After Cooler (ATAAC)	✓		Two horns	✓	
Modular cooling system for engine air intake, oil and water	✓		Two heavy-duty batteries, high output, maintenance free, 1,120 CCA	✓	
Hydraulic demand fan – electronically controlled, temperature sensing	✓		Main disconnect switch	✓	
Hydraulic fan, reversing	✓		Electric starter (heavy-duty, 24 volt)	✓	
Electro Hydrostatic Control (EHC) for transmission	✓		Extra lighting – two additional LED lights at the bottom of cab facing forward plus one underhood light		✓
Engine idle shutdown	✓		LED flashing beacon		✓
Auto engine speed control	✓		<b>OPERATOR ENVIRONMENT</b>		
Electric fuel pump	✓		Pressurized, sound suppressed, ROPS/FOPS Cab with tinted glass and right side sliding window	✓	
Water separator	✓		Deluxe cab package with two sliding side windows and eight LED lights: four roof-mounted facing forward, two facing rearward and two facing side integrated in the air conditioner unit		✓
Glow plug starting aid	✓		Deluxe high back seat – heated, with adjustable shock control		✓
Engine air cleaner		✓	Premium Plus high back seat – heated and cooled, lockable side-side isolator		✓
Engine air precleaner		✓	Adjustable armrests	✓	
<b>UNDERCARRIAGE</b>			Electro Hydraulic, seat mounted control levers with faster processing	✓	
Heavy Duty Extended Life (HDXL) undercarriage and tracks (38 sections), 1850 mm (72.8 in) track gauge	✓		V-pattern and pedal steering controls		✓
Oscillating track roller frames	✓		Joystick steering controls		✓
Track guiding guards, end section	✓		Joystick implement control		✓
Hydraulic track adjuster	✓		Two-lever implement control		✓
Sprocket rims with replaceable bolt-on tough steel segments	✓		Seat belt, retractable, with buckling indicator on dash	✓	
Sprocket guards	✓		Four-point restraint ready seat	✓	
Seven track rollers per side, with two upper carrier rollers, lifetime lubricated	✓				
Idlers, conventional type, lifetime lubricated	✓				

(continued on next page)

# 963 Ship Hold Standard and Optional Equipment

## Standard and Optional Equipment *(continued)*

Standard and optional equipment may vary. Consult your Cat dealer for details.

	Standard	Optional		Standard	Optional
<b>OPERATOR ENVIRONMENT <i>(continued)</i></b>			<b>OTHER STANDARD EQUIPMENT</b>		
Air conditioning and heating	✓		Rear and front lifting device	✓	
Heater/defroster with automatic temperature control and automatic blower control	✓		Durable metal fender	✓	
Cab air powered precleaner		✓	Exterior sound suppression	✓	
Rearview mirror, inside, adjustable	✓		Load sensing implement pump with variable displacement	✓	
Radio ready. Includes speakers, antenna and 12 V power outlet and 5 V USB port	✓		Z-bar loader linkage	✓	
Radio – FM Ready Kit		✓	Implement cylinders with sensors	✓	
Radio – Bluetooth & Aux & Mic		✓	Engine enclosure with lockable doors	✓	
Radio – Bluetooth & Aux & Mic – <b>Dab+</b>		✓	Debris resistant radiator core (six fins-per-inch)	✓	
Radio – Bluetooth & Aux & Mic – <b>Sirius</b>		✓	Hinged radiator guard and swing out fan	✓	
Parking brake switch and “brake-on” indicator light	✓		4 × 2 easy tie-down points on chassis	✓	
Implement lock-out switch	✓		<b>GUARDING</b>		
High Definition rearview camera	✓		Full bottom guards	✓	
254 mm (10 in) color touchscreen display with integrated rear camera display and machine slope indicator	✓		Idler guard (none)		✓
Three selectable working modes (Auto, Power, Eco)	✓		Idler guard		✓
Operator programmable lift and tilt kickouts	✓		Idler guard – ship hold		✓
Machine Pitch and Roll indicate	✓		Front light guard		✓
Bucket shake	✓		Windshield guard		✓
Remote services (Troubleshoot/Remote Flash)		✓	Lift cylinder guard	✓	
Heavy-duty rubber floor mat	✓		Tilt cylinder guard	✓	
Windshield washers and wipers, multiple speed, front and rear	✓		Two-piece final drive guard		✓
Durable metal roof	✓		Three-piece final drive guard		✓
Coat hook	✓		Final drive bottom guard		✓
Storage compartments under left armrest	✓		Track roller guard		✓
Document holder on right console	✓				

*(continued on next page)*

# 963 Ship Hold Standard and Optional Equipment

## Standard and Optional Equipment *(continued)*

Standard and optional equipment may vary. Consult your Cat dealer for details.

	Standard	Optional		Standard	Optional
<b>BUCKETS*</b>			<b>MAINTENANCE</b>		
General purpose – 2.5 m <sup>3</sup> (3.25 yd <sup>3</sup> )		✓	Standard lubricant		✓
General purpose with welded flush adaptor – 2.3 m <sup>3</sup> (3.0 yd <sup>3</sup> )		✓	Bio lubricant		✓
Heavy-duty general purpose – 2.5 m <sup>3</sup> (3.25 yd <sup>3</sup> )		✓	Cat extended life coolant	✓	
Multi-purpose – 2.0 m <sup>3</sup> (2.6 yd <sup>3</sup> )		✓	Service package		✓
Heavy-duty multi-purpose – 2.0 m <sup>3</sup> (2.6 yd <sup>3</sup> )		✓	Extended service package – manual hydraulic system enabling cab tilt and lock at 30 degrees safely in the field, shovel holder bracket (shovel not included)		✓
General purpose with full bolted cutting edge – 2.5 m <sup>3</sup> (3.25 yd <sup>3</sup> )		✓	High speed oil change		✓
Performance general purpose – 2.8 m <sup>3</sup> (3.7 yd <sup>3</sup> )		✓	Ecology drains on hydraulic oil tank	✓	
Wide flush general purpose – 2.9 m <sup>3</sup> (3.8 yd <sup>3</sup> )		✓	Oil sampling valves	✓	
Quick coupler, general purpose – 2.3 m <sup>3</sup> (3.0 yd <sup>3</sup> )		✓	Cat XT hoses	✓	
Quick coupler, general purpose LGP – 2.7 m <sup>3</sup> (3.5 yd <sup>3</sup> )		✓	HYDO Advanced 10	✓	
Heavy-duty landfill bucket – 3.1 m <sup>3</sup> (4.0 yd <sup>3</sup> )		✓	Implement oil return filter in hydraulic tank	✓	
Multi-purpose heavy-duty landfill bucket – 2.7 m <sup>3</sup> (3.5 yd <sup>3</sup> )		✓	<b>REAR ATTACHMENTS</b>		
No bucket		✓	Bumper	✓	
Note: All buckets (excluding General Purpose with full bolted cutting edge) feature Advansys Ground Engaging Tools.			<b>FUEL TANK</b>		
<b>BLADES*</b>			Fuel tank	✓	
Trim Blade – Coal – 3158 mm (124 in)		✓	Fast Fill fuel tank		✓
Trim Blade – Iron Ore – 3178 mm (125 in)		✓	Fuel tank refilling pump		✓
Trim Blade – Fusion Quick Coupler – 3108 mm (122 in)		✓	Sediment hand pump		✓
<b>HYDRAULICS</b>			<b>OTHER EQUIPMENT</b>		
Two-valve hydraulics, two-lever		✓	Access package		✓
Two-valve hydraulics, joystick		✓	Jacket water heater (110 V)		✓
Three-valve hydraulics, front, joystick		✓	Jacket water heater (240 V)		✓
Three-valve hydraulics, rear, joystick		✓	Fusion Quick Coupler		✓
Three-valve hydraulics, rear, two-lever		✓	<b>TECHNOLOGY PRODUCTS</b>		
Four-valve hydraulics, front and rear, joystick		✓	Product Link ready	✓	
Standard hydraulic lines		✓	Product Link cellular		✓
Quick coupler hydraulic lines		✓	Product Link dual (cellular and satellite)		✓
			Cat Payload		✓

\*Bucket and attachment offerings may vary. Please consult your Cat dealer for availability.

# 963

## Track Loader Partial Steel Mill

***Track loaders provide a rugged, agile option for steel mill and other high temperature work. Specialized features are available from the factory to equip your track loader to perform in these especially harsh conditions.***

### High Temperature Undercarriage

- Purpose-built undercarriage includes high temperature seals in rollers, idlers, pivot shafts and final drives.
- Steel bar welded on the bottom of the track roller frame helps prevent heat distortion.
- Duo-cone™ seal guards on the final drives.
- Optional track roller guard protects against abrasion.

### Steel Mill Cab

- Various heat shields inside lower doors, underneath the operator station, around air ducts and air conditioning lines.
- Heat resistant floor mat.
- Double laminated windshield 18 mm/0.7 in thick.
- Front windshield grill and thermal net against slag projections.
- Cab windows silicone sealed.
- Cab door glazing designed to protect windows against slag splatter from tracks.
- Additional metallic roof protection.
- Eight wide flood lights (four front, two rear, two sides) heat resistant, equipped with silicone sleeves.
- Metallic door handles and roof act as a heat shield.
- Air conditioning vents on both sides of operator seat post.

### Additional Protective Features

- Metallic fuel tank.
- Fire retardant oil.
- Heavy-duty front and rear machine guards.
- Sealed track link with no lubrication fluid.
- Double grouser or triple grouser shoes.
- Slag bucket.



### Important Notice:

This package DOES NOT feature all the other modifications required to allow the machine to run on hot slag. Examples: heat insulation for harnesses, hydraulic hoses, water, heater and air lines as well as heat shields for the tanks.

*Please consult with your Cat dealer regarding Steel Mill package availability.*

# 963 Track Loader – Partial Steel Mill Specifications

## Engine

Engine Model	Cat® C7.1	
Emissions	Meets U.S. EPA Tier 4 Final, EU Stage V, Korea Tier 5, China Nonroad Stage IV, Japan 2014 emission standards or India Bharat Stage III, Eurasian Economic Union Stage IIIA, UN ECE R96 Stage IIIA emission standards, equivalent to U.S. EPA Tier 3/ EU Stage IIIA.	
Net Power (1,800 rpm)		
ISO 9249/SAE J1349	151 kW	202 hp
ISO 9249 (DIN)	204 mhp	
Engine Power (1,800 rpm)		
ISO 14396	168 kW	225 hp
ISO 14396 (DIN)	227 mhp	
Bore	105 mm	4.1 in
Stroke	135 mm	5.3 in
Displacement	7.01 L	427.8 in <sup>3</sup>

- Net power advertised is the power available at the engine flywheel when the engine is equipped with a fan, air cleaner, clean emissions module and alternator.
- Advertised power is tested per the specified standard in effect at the time of manufacture.
- Inline six-cylinder diesel engine with single turbo, charged with ATAAC and engine mounted aftertreatment (when equipped).
- No derating required up to 3000 m (9,842 ft) altitude.
- Cat U.S. EPA Tier 4 Final, EU Stage V, Korea Stage V, China Nonroad Stage IV, Japan 2014 engines are required to use ULSD (ultra-low sulfur diesel fuel with 15 ppm of sulfur or less) and are compatible\* with ULSD blended with the following lower-carbon intensity fuels\*\* up to:

- ✓ 20% biodiesel FAME (fatty acid methyl ester)\*\*\*
- ✓ 100% renewable diesel, HVO (hydrotreated vegetable oil) and GTL (gas-to-liquid) fuels

Cat engines meeting Eurasian Economic Union Stage IIIA, UN ECE R96 Stage IIIA emission standards, equivalent to U.S. EPA Tier 3/ EU Stage IIIA, are compatible\* with diesel fuel blended with the following lower-carbon intensity fuels\*\*\* up to:

- ✓ 100% biodiesel FAME (fatty acid methyl ester)\*\*\*\*
- ✓ 100% renewable diesel, HVO (hydrotreated vegetable oil) and GTL (gas-to-liquid) fuels

Refer to guidelines for successful application. Please consult your Cat dealer or “Caterpillar Machine Fluids Recommendations” (SEBU6250) for details.

\*While Caterpillar engines are compatible with these alternative fuels, some regions may not allow their use.

\*\*Tailpipe greenhouse gas emissions from lower-carbon intensity fuels are essentially the same as traditional fuels.

\*\*\*Engines with no aftertreatment devices are compatible with higher blends, up to 100% biodiesel (for use of blends higher than 20% biodiesel, consult your Cat dealer).

\*\*\*\*For use of blends higher than 20% biodiesel, consult your Cat dealer.

## Air Conditioning System

The air conditioning system on this machine contains the fluorinated greenhouse gas refrigerant R134a or R1234yf. See the label or instruction manual for identification of the gas.

If equipped with R134a (Global Warming Potential = 1430), the system contains 1.134 kg (2.5 lb) of refrigerant which has a CO<sub>2</sub> equivalent of 1.622 metric tonnes (1.787 tons).

## Drive System

Description	Electronically controlled Hydrostatic drive with two variable displacement bent axis motors and two variable displacement slipper-type axial piston pumps
Travel Speed	Infinite variable speed from 0 to 10 km/h (0 to 6.2 mph)
Relief Valve Setting	47 500 kPa 6,890 psi

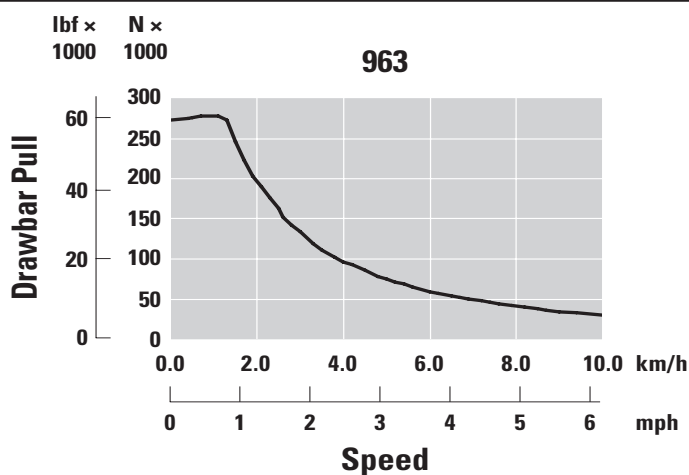
## Implement System

Description	Load sensing, variable displacement piston pump
Maximum Continuous Flow	256 L/min 67.6 gal/min at 1,800 rpm at 1,800 rpm
Maximum Pressure	28 000 kPa 4,061 psi
Filter System	Implement return filter

## Service Refill Capacities

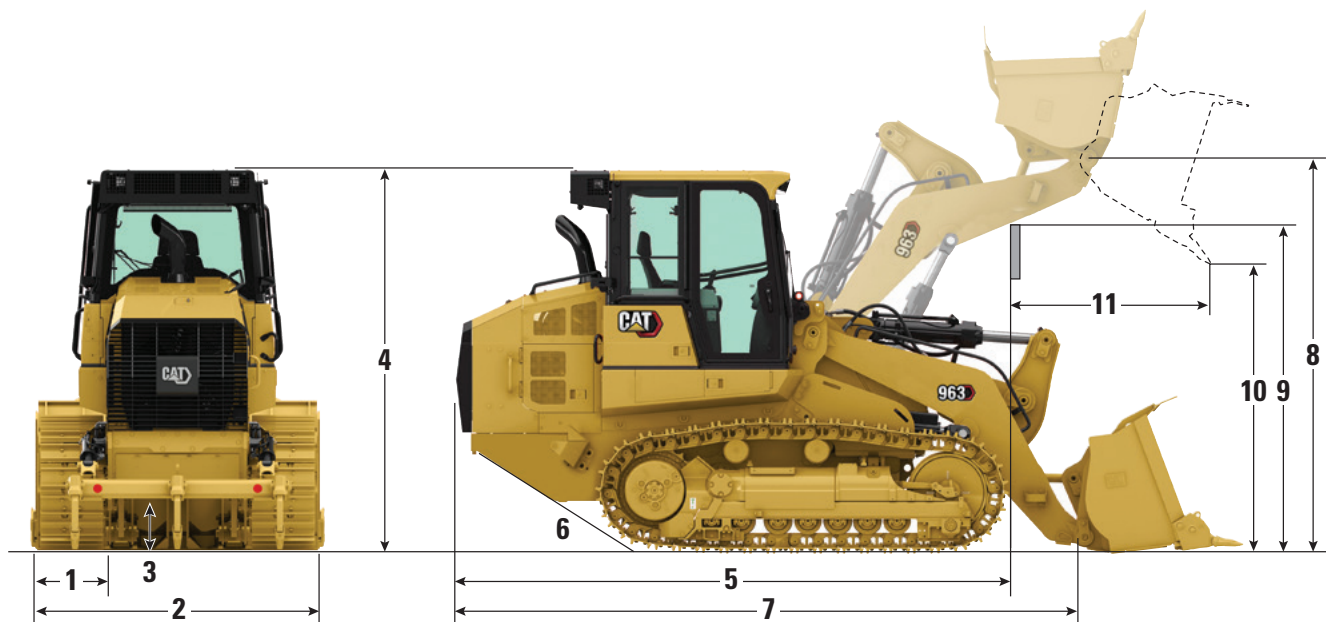
Metallic Fuel Tank	200 L	52.8 gal
Diesel Exhaust Fluid (DEF) Tank (when equipped)	16 L	4.2 gal
Cooling System	32 L	8.5 gal
Crankcase (with filter)	16.5 L	4.4 gal
Final Drive (each)	15 L	4.0 gal
Hydraulic Tank	90 L	23.7 gal
Pivot Shaft	1.8 L	0.5 gal

## Drawbar Pull



# 963 Track Loader – Partial Steel Mill Specifications

## Weights and Dimensions



Construction configuration shown.

	Partial Steel Mill	
Operating Weight <sup>1</sup>	22 004 kg	48,510 lb
Shipping Weight <sup>2</sup>	18 815 kg	41,480 lb
<b>1</b> Track Shoe Width		
Triple Grouser	430 mm	17 in
Double Grouser	450 mm	18 in
Track Rollers – Each Side	7	
Number of Shoes – Each Side	38	
Track on Ground	2542 mm	100.0 in
Ground Pressure		
430 mm (17 in) triple grouser shoes	87.0 kPa	12.6 psi
450 mm (18 in) double grouser shoes	83.2 kPa	12.1 psi
<b>2</b> Overall Machine Width with Slag Bucket	2566 mm	101 in
<b>3</b> Ground Clearance	471 mm	18.5 in
<b>4</b> Machine Height to Top of Cab	3366 mm	132.5 in
<b>5</b> Machine Length to Front of Tracks	4843 mm	194.6 in
<b>6</b> Ramp Angle	29°	
<b>7</b> Overall Machine Length with Slag Bucket	6851 mm	269.7 in
<b>8</b> Hinge Pin Height at Maximum Lift	3940 mm	155.1 in
<b>9</b> Lift Arm Clearance at Maximum Lift	3590 mm	141.3 in
<b>10</b> Dump Clearance at Maximum Lift and 45° Discharge	2913 mm	114.7 in
<b>11</b> Reach at Maximum Lift and 45° Discharge	1155 mm	45.5 in
Turning Radius	4.0 m	157.5 in

<sup>1</sup>Operating weight: machine with partial steel mill package, Slag bucket with teeth and segments, Heavy Duty Extended Life undercarriage, aftertreatment system, lubricants, 100% fuel tank and 75 kg (165 lb) operator. For machines without aftertreatment, subtract 287 kg (632 lb).

<sup>2</sup>Shipping weight: machine with partial steel mill package, Heavy Duty Extended Life undercarriage, aftertreatment system, lubricants, 10% fuel tank. For machines without aftertreatment, subtract 287 kg (632 lb).

## Buckets

Pin-On Buckets – Standard Linkage	Slag Bucket	
Cutting Edge Type	Long teeth and segment	
Bucket Weight	2872 kg	6,332 lb
Bucket Width	2564 mm	101.0 in
Rated Capacity at 100% Fill Factor <sup>1</sup>	2.3 m <sup>3</sup>	3.0 yd <sup>3</sup>
Rated Operating Capacity <sup>2</sup>	4983 kg	10,985 lb
Static Tipping Load <sup>3</sup>	14 236 kg	31,386 lb
Breakout Force	163 944 N	36,856 lbf

<sup>1</sup>Volumetric bucket capacity as per ISO 7546:1983.

<sup>2</sup>Rated Operating Capacity should be considered with 35% Static Tipping Load as required by ISO 14397-1:2007.

<sup>3</sup>Machine equipped with standard and additional counterweights.

## Standards

### ROPS/FOPS

- ROPS (Rollover Protective Structure) offered by Caterpillar for the machine meets ROPS criteria ISO 3471:2008.
- FOPS (Falling Object Protective Structure) meets ISO 3449:2005 Level II.

### Brakes

- Brakes meet the standard ISO 10265:2008.

### Sound and Vibration Information

- The declared dynamic operator sound pressure level is 74 dB(A) when “ISO 6396:2008” is used to measure the value for an enclosed cab. The measurements were conducted at 70% of the maximum engine cooling fan speed. The sound level may vary at different engine cooling fan speeds. The cab was properly installed and maintained. The measurements were conducted with the cab doors and the cab windows closed. NOTE: The dynamic operator sound pressure level uncertainty is  $\pm 2$  dB(A).
- Hearing protection may be needed when the machine is operated with an open operator station for extended periods, in a noisy environment or with a cab that is not properly maintained.
- The guaranteed exterior sound power level is 109 dB(A) when the value is measured according to the dynamic test procedures and the conditions that are specified in “ISO 6395:2008.” The measurements were conducted at 70% of the maximum engine cooling fan speed. The sound level may vary at different engine cooling fan speeds.
- Sound level information for machines in European Union countries and in countries that adopt the “EU Directives”: If equipped, the certification label is used to verify the environmental sound certification of the machine to the requirements of the European Union. The value that is listed on the label indicates the guaranteed exterior sound power level ( $L_{WA}$ ) at the time of manufacture for the conditions that are specified in “2000/14/EC.”

# 963 Partial Steel Mill Standard and Optional Equipment

## Standard and Optional Equipment

Standard and optional equipment may vary. Consult your Cat dealer for details.

	Standard	Optional		Standard	Optional
<b>POWER TRAIN</b>			<b>ELECTRICAL</b>		
Cat C7.1 diesel engine with engine-mounted aftertreatment to meet U.S. EPA Tier 4 Final, EU Stage V, Korea Tier 5, China Nonroad Stage IV, Japan 2014 emission standards		✓	Ground Level Service Center	✓	
Cat C7.1 diesel engine to meet India Bharat Stage III, Eurasian Economic Union Stage IIIA, UN ECE R96 Stage IIIA emission standards, equivalent to Tier 3/Stage IIIA		✓	24 volt heavy-duty alternator	✓	
Engine turbocharger	✓		Backup alarm	✓	
Air-To-Air After Cooler (ATAAC)	✓		Two horns	✓	
Modular cooling system for engine air intake, oil and water	✓		Two heavy-duty batteries, high output, maintenance free, 1,120 CCA	✓	
Hydraulic demand fan – electronically controlled, temperature sensing	✓		Main disconnect switch	✓	
Hydraulic fan, reversing	✓		Electric starter (heavy-duty, 24 volt)	✓	
Electro Hydrostatic Control (EHC) for transmission	✓		LED flashing beacon		✓
Engine idle shutdown	✓		<b>OPERATOR ENVIRONMENT</b>		
Auto engine speed control	✓		Steel mill cab – pressurized, sound suppressed, ROPS/FOPS cab, with silicone sealed glass and heavy-duty laminated windshield glass	✓	
Electric fuel pump	✓		Deluxe high back seat – heated, with adjustable shock control		✓
Water separator	✓		Premium Plus high back seat – heated and cooled, lockable side-side isolator		✓
Glow plug starting aid	✓		Adjustable armrests	✓	
Engine air cleaner		✓	Electro Hydraulic, seat mounted control levers with faster processing	✓	
Engine air precleaner		✓	V-pattern and pedal steering controls		✓
<b>UNDERCARRIAGE</b>			Joystick steering controls		✓
Heavy Duty Extended Life (HDXL) undercarriage and tracks (38 sections), 1850 mm (72.8 in) track gauge	✓		Joystick implement control		✓
Sealed Heavy Duty Tracks		✓	Two-lever implement control		✓
430 mm (17 in) High Temperature Heavy Duty Sealed Track – Triple Grousers		✓	Seat belt, retractable, with buckling indicator on dash	✓	
450 mm (18 in) High Temperature Heavy Duty Sealed Track – Double		✓	Four-point restraint ready seat	✓	
Oscillating track roller frames	✓		Air conditioning and heating	✓	
Track guiding guards, end section	✓				
Hydraulic track adjuster	✓				
Sprocket rims with replaceable bolt-on tough steel segments	✓				
Sprocket guards	✓				
Seven track rollers per side, with two upper carrier rollers, lifetime lubricated	✓				
Idlers, conventional type, lifetime lubricated	✓				

(continued on next page)

# 963 Partial Steel Mill Standard and Optional Equipment

## Standard and Optional Equipment *(continued)*

Standard and optional equipment may vary. Consult your Cat dealer for details.

	Standard	Optional		Standard	Optional
<b>OPERATOR ENVIRONMENT <i>(continued)</i></b>			<b>OTHER STANDARD EQUIPMENT</b>		
Heater/defroster with automatic temperature control and automatic blower control	✓		Durable metal fender	✓	
Rearview mirror, inside, adjustable	✓		Exterior sound suppression	✓	
Radio ready. Includes speakers, antenna and 12 V power outlet and 5 V USB port	✓		Load sensing implement pump with variable displacement	✓	
Radio – FM Ready Kit		✓	Z-bar loader linkage	✓	
Radio – Bluetooth & Aux & Mic		✓	Implement cylinders with sensors	✓	
Parking brake switch and “brake-on” indicator light	✓		Engine enclosure with lockable doors	✓	
Implement lock-out switch	✓		Debris resistant radiator core (six fins-per-inch)	✓	
High Definition rearview camera	✓		Hinged radiator guard and swing out fan	✓	
254 mm (10 in) color touchscreen display with integrated rear camera display and machine slope indicator	✓		4 × 2 easy tie-down points on chassis	✓	
Three selectable working modes (Auto, Power, Eco)	✓		<b>GUARDING</b>		
Operator programmable lift and tilt kickouts	✓		Heavy-duty front guard	✓	
Machine Pitch and Roll indicate	✓		Windshield guard with metallic screen	✓	
Bucket shake	✓		Full bottom guards	✓	
Remote services (Troubleshoot/Remote Flash)		✓	Idler guard (none)		✓
Heavy-duty rubber floor mat	✓		Idler guard		✓
Windshield washers and silicone wipers, multiple speed, front and rear	✓		Idler guard – ship hold		✓
Durable metal roof	✓		Front light guard		✓
Coat hook	✓		Windshield guard		✓
Storage compartments under left armrest	✓		Lift cylinder guard	✓	
Document holder on right console	✓		Tilt cylinder guard	✓	
			Two-piece final drive guard		✓
			Three-piece final drive guard		✓
			Final drive bottom guard		✓
			Track roller guard		✓

*(continued on next page)*

# 963 Partial Steel Mill Standard and Optional Equipment

## Standard and Optional Equipment *(continued)*

Standard and optional equipment may vary. Consult your Cat dealer for details.

	Standard	Optional		Standard	Optional
<b>BUCKETS*</b>			<b>REAR ATTACHMENTS</b>		
Slag bucket – 2.3 m <sup>3</sup> (3.0 yd <sup>3</sup> )		✓	Bumper		✓
General purpose – 2.5 m <sup>3</sup> (3.25 yd <sup>3</sup> )		✓	Striker bars		✓
General purpose with welded flush adaptor – 2.3 m <sup>3</sup> (3.0 yd <sup>3</sup> )		✓	<b>FUEL TANK</b>		
Heavy-duty general purpose – 2.5 m <sup>3</sup> (3.25 yd <sup>3</sup> )		✓	Insulated metallic fuel tank	✓	
General purpose with full bolted cutting edge – 2.5 m <sup>3</sup> (3.25 yd <sup>3</sup> )		✓	<b>OTHER EQUIPMENT</b>		
Performance general purpose – 2.8 m <sup>3</sup> (3.7 yd <sup>3</sup> )		✓	Access package		✓
Wide flush general purpose – 2.9 m <sup>3</sup> (3.8 yd <sup>3</sup> )		✓	<b>TECHNOLOGY PRODUCTS</b>		
No bucket		✓	Product Link ready	✓	
<b>HYDRAULICS</b>			Product Link cellular		✓
Two-valve hydraulics, two-lever		✓	Product Link dual (cellular and satellite)		✓
Two-valve hydraulics, joystick		✓	Cat Payload		✓
Standard hydraulic lines	✓		<b>COUNTERWEIGHTS</b>		
<b>MAINTENANCE</b>			Light counterweight 320 kg (705 lb)		✓
Standard lubricant		✓	Light counterweight, additional 310 kg (683 lb)		✓
Bio lubricant		✓			
Ecosafe lubricant (steel mill)	✓				
Cat extended life coolant	✓				
Extended service package – manual hydraulic system enabling cab tilt and lock at 30 degrees safely in the field, shovel holder bracket (shovel not included)	✓				
High speed oil change		✓			
Ecology drains on hydraulic oil tank	✓				
Oil sampling valves	✓				
Cat XT hoses	✓				
HYDO Advanced 10	✓				
Implement oil return filter in hydraulic tank	✓				

\*Bucket and attachment offerings may vary. Please consult your Cat dealer for availability.



オフロード法少数特例  
2014年基準同等適合車

For more complete information on Cat products, dealer services, and industry solutions, visit us on the web at [www.cat.com](http://www.cat.com)

© 2025 Caterpillar  
All rights reserved

Materials and specifications are subject to change without notice. Featured machines in photos may include additional equipment. See your Cat dealer for available options.

CAT, CATERPILLAR, LET'S DO THE WORK, VisionLink, their respective logos, "Caterpillar Corporate Yellow," the "Power Edge" and Cat "Modern Hex" trade dress as well as corporate and product identity used herein, are trademarks of Caterpillar and may not be used without permission.

Based on the Labor, Safety and Health Laws in Japan, employer of small construction equipment are required to provide specific training for all operators on machines with machine weight less than 3 metric ton. For machines greater than 3 metric ton, operator needs to obtain operator license certification from a Government approved registered training school.

AEXQ2919-05 (07-2025)  
Replaces AEXQ2919-04  
Build Number: 12A  
(Global)

