



395

Hydraulic Excavator

Technical Specifications

Configurations and features may vary by region. Please consult your Cat® dealer for availability in your area.

Table of Contents

395 Hydraulic Excavator

Specifications	2	Operating Weights and Ground Pressures.....	3
Engine	2	Major Component Weights	3
Swing Mechanism	2	Dimensions.....	4
Weights.....	2	Working Ranges	6
Track	2	Bucket Specifications and Compatibility	7
Drive	2	Attachments Offering Guide	7
Hydraulic System	2	Truck Pass Match	8
Service Refill Capacities	2	Standard and Optional Equipment	9
Standards.....	2	Dealer Installed Kits and Attachments	11
Sound Performance	2	395 Environmental Declaration	12
Air Conditioning System.....	2		

395 Long Reach Hydraulic Excavator Specialty Configurations

Key Features and Benefits	13	Sound Performance	15
Specifications	14	Air Conditioning System.....	15
Engine	14	Operating Weights and Ground Pressures.....	16
Swing Mechanism	14	Major Component Weights	16
Weights.....	14	Dimensions.....	17
Track	14	Working Ranges	19
Drive	14	Standard and Optional Equipment	20
Hydraulic System	14	Dealer Installed Kits and Attachments	22
Service Refill Capacity.....	15	Cab Options	23
Standards.....	15		



オフロード法2014年
基準適合

395 Hydraulic Excavator Specifications

Engine

Engine Model	Cat® C18	
Net Power – ISO 9249	404 kW	542 hp
Engine Power – ISO 14396	405 kW	543 hp
Bore	145 mm	6 in
Stroke	183 mm	7 in
Displacement	18.1 L	1,105 in ³

- Meets U.S. EPA Tier 4 Final, EU Stage V, Korea Stage V, and Japan 2014 emission standards.
- Recommended for use up to 4500 m (14,760 ft) altitude with engine power derate above 3000 m (9,840 ft).
- Advertised power is tested per the specified standard in effect at the time of manufacture.
- Net power advertised is the power available at the flywheel when the engine is equipped with fan, air intake system, exhaust system and alternator.
- Engine speed at 1,700 rpm.
- Cat diesel engines are required to use ULSD (ultra-low sulfur diesel fuel with 15 ppm of sulfur or less) or ULSD blended with the following lower-carbon intensity fuels** up to:
 - ✓ 20% biodiesel FAME (fatty acid methyl ester)*
 - ✓ 100% renewable diesel, HVO (hydrotreated vegetable oil) and GTL (gas-to-liquid) fuels

Refer to guidelines for successful application. Please consult your Cat dealer or “Caterpillar Machine Fluids Recommendations” (SEBU6250) for details.

**Engines with no aftertreatment devices can use higher blends, up to 100% biodiesel (for use of blends higher than 20% biodiesel, consult your Cat dealer).*

***Tailpipe greenhouse gas emissions from lower-carbon intensity fuels are essentially the same as traditional fuels.*

Swing Mechanism

Swing Speed	6.26 rpm	
Maximum Swing Torque	362 kN·m	267,333 lbf·ft

Weights

Operating Weight	91 800 kg	202,400 lb
------------------	-----------	------------

- Long Variable Gauge undercarriage, General Purpose (GP) boom, GP3.7HB2 (12'2") stick, Severe Duty (SD) 5.2 m³ (6.8 yd³) bucket, 650 mm (26") double grouser shoes and 15.45 mt (34,060 lb) counterweight.

Track

Standard Track Shoes Width	650 mm	26 in
Optional Track Shoes Width	750 mm	30 in
Number of Shoes (each side)	51	
Number of Track Rollers (each side)	9	
Number of Carrier Rollers (each side)	3	

Drive

Maximum Gradeability	35°/70%	
Maximum Travel Speed	4.6 km/h	2.8 mph
Maximum Drawbar Pull	581 kN	130,614 lbf

Hydraulic System

Main System – Maximum Flow – Implement	1064 L/min (532 × 2 pumps)	281 gal/min (141 × 2 pumps)
Swing System – Maximum Flow	295 L/min	78 gal/min
Maximum Pressure – Equipment – Implement	37 000 kPa	5,366 psi
Maximum Pressure – Travel	35 000 kPa	5,076 psi
Maximum Pressure – Swing	31 000 kPa	4,496 psi
Boom Cylinder – Bore	210 mm	8 in
Boom Cylinder – Stroke	1967 mm	77 in
Stick Cylinder – Bore	225 mm	9 in
Stick Cylinder – Stroke	2262 mm	89 in
HB2 Bucket Cylinder – Bore	200 mm	8 in
HB2 Bucket Cylinder – Stroke	1451 mm	57 in
JC Bucket Cylinder – Bore	220 mm	9 in
JC Bucket Cylinder – Stroke	1586 mm	62 in

Service Refill Capacities

Fuel Tank Capacity	1220 L	322 gal
Cooling System	71 L	19 gal
Engine Oil (with filter)	67 L	18 gal
Swing Drive (each)	24 L	6 gal
Final Drive (each)	20 L	5 gal
Hydraulic System (including tank)	740 L	195 gal
Hydraulic Tank (including suction pipe)	372 L	98 gal
Diesel Exhaust Fluid (DEF) Tank	80 L	21 gal

Standards

Brakes	ISO 10265:2008
Cab/Operator Protective Guards (OPG) (optional)	ISO 10262:1998 Level II

Sound Performance

ISO 6395:2008 (external)	109 dB(A)
ISO 6396:2008 (inside cab)	73 dB(A)

- Hearing protection may be needed when operating with an open operator station and cab (when not properly maintained or doors/windows open) for extended periods or in a noisy environment.

Air Conditioning System

The air conditioning system on this machine contains the fluorinated greenhouse gas refrigerant R134a (Global Warming Potential = 1430). The system contains 1.0 kg of refrigerant, which has a CO₂ equivalent of 1.43 metric tonnes.

395 Hydraulic Excavator Specifications

Operating Weights and Ground Pressures

	650 mm (26") Double Grouser Shoes		750 mm (30") Double Grouser Shoes	
	Weight	Ground Pressure	Weight	Ground Pressure
	kg (lb)	kPa (psi)	kg (lb)	kPa (psi)
Base Machine Configurations				
Base Frame with Track Rollers and Carrier Rollers				
15.45 mt (34,060 lb) counterweight + Long Variable Gauge Undercarriage Base Machine				
GP Boom + GP3.7HB2 (12'2") Stick + 5.2 m ³ (6.8 yd ³) SD bucket	91 800 (202,400)	128.2 (18.6)	92 700 (204,300)	112 (16.3)
Mass Boom + M3.4JC (11'2") Stick + 6.5 m ³ (8.5 yd ³) Severe Duty – V Edge (SDV) bucket	94 500 (208,200)	128.3 (18.6)	95 300 (210,200)	112.2 (16.3)
Mass Boom + M2.92JC (9'7") Stick + 6.5 m ³ (8.5 yd ³) SDV bucket	94 400 (208,100)	128.2 (18.6)	95 300 (210,100)	112.1 (16.3)

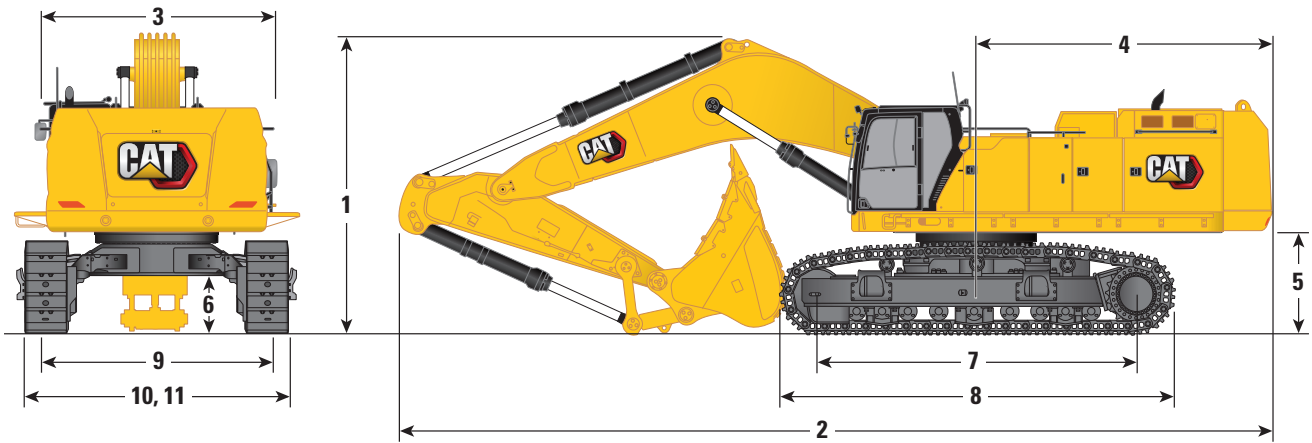
Major Component Weights

	kg	lb
Base Machine Weight: including upperframe, undercarriage, counterweight, boom cylinders, without boom, stick, bucket, stick cylinder, bucket cylinder, tracks, fuel tank, operator		
With 15.45 mt (34,060 lb) Counterweight, Swing Frame, Base Frame with Track Rollers and Carrier Rollers	62 260	137,250
Track Shoes:		
650 mm (26") Width, 20.5 mm (0.8") Thick, Double Grouser Track Shoes	9290	20,470
750 mm (30") Width, 20.5 mm (0.8") Thick, Double Grouser Track Shoes	10 160	22,400
Two Boom Cylinders	1820	4,010
Weight of 90% Fuel Tank and 75 kg (165 lb) Operator	1010	2,230
Counterweight:		
15.45 mt (34,060 lb) Counterweight	15 450	34,060
Swing Frame	9100	20,060
Long Variable Gauge Undercarriage:		
Base Frame with Track Rollers and Carrier Rollers for Long Variable Gauge Undercarriage	24 170	53,290
Booms (including lines, pins, stick cylinder):		
Mass Boom 7.25 m (23'9")	8560	18,880
GP Boom 8.4 m (27'7")	9310	20,530
Sticks (including lines, pins, bucket cylinder, bucket linkage):		
Mass Stick M2.92JC (9'7")	5510	12,150
Mass Stick M3.4JC (11'2")	5550	12,240
GP Stick GP3.7HB2 (12'2")	4760	10,480
Buckets (without linkage):		
5.2 m ³ (6.8 yd ³) SD	5190	11,440
6.5 m ³ (8.5 yd ³) SDV	7790	17,170

395 Hydraulic Excavator Specifications

Dimensions

All dimensions are approximate and may vary depending on bucket selection.



Boom Options

GP Boom
8.4 m (27'7")

Mass Boom
7.25 m (23'9")

Stick Options

GP Stick
GP3.7HD2 (12'2")

Mass Stick
M3.4JC (11'2")

M2.92JC (9'7")

1 Machine Height:

	GP Boom		Mass Boom	
Top of Cab Height	3670 mm	12'0"	3670 mm	12'0"
Top of OPG Height	3810 mm	12'6"	3810 mm	12'6"
Handrails Height	3750 mm	12'4"	3750 mm	12'4"
With Boom/Stick/Bucket Installed	5160 mm	16'11"	5330 mm	17'6"
With Boom/Stick Installed	4900 mm	16'1"	4660 mm	15'3"
With Boom Installed	4070 mm	13'4"	3940 mm	12'11"
With Boom/Stick/Bucket Installed (with auxiliary lines)	5170 mm	17'0"	5350 mm	17'7"
With Boom/Stick Installed (with auxiliary lines)	4900 mm	16'1"	4730 mm	15'6"
With Boom Installed (with auxiliary lines)	4140 mm	13'7"	4010 mm	13'2"

2 Machine Length:

	GP Boom		Mass Boom	
With Boom/Stick/Bucket Installed	15 110 mm	49'7"	13 890 mm	45'7"
With Boom/Stick Installed	15 080 mm	49'6"	13 850 mm	45'5"
With Boom Installed	13 160 mm	43'2"	11 980 mm	39'4"
With Boom/Stick/Bucket Installed (with auxiliary lines)	15 110 mm	49'7"	13 890 mm	45'7"
With Boom/Stick Installed (with auxiliary lines)	15 080 mm	49'6"	13 850 mm	45'5"
With Boom Installed (with auxiliary lines)	13 150 mm	43'2"	11 990 mm	39'4"

3 Upperframe Width:

Without Walkways	3490 mm	11'5"	3490 mm	11'5"	3490 mm	11'5"
With Walkways	4510 mm	14'10"	4510 mm	14'10"	4510 mm	14'10"
Walkways Width	500 mm	1'8"	500 mm	1'8"	500 mm	1'8"

4 Tail Swing Radius

GP Boom	4840 mm	15'11"	Mass Boom	4840 mm	15'11"
---------	---------	--------	-----------	---------	--------

5 Counterweight Clearance

GP Boom	1640 mm	5'5"	Mass Boom	1640 mm	5'5"
---------	---------	------	-----------	---------	------

6 Ground Clearance

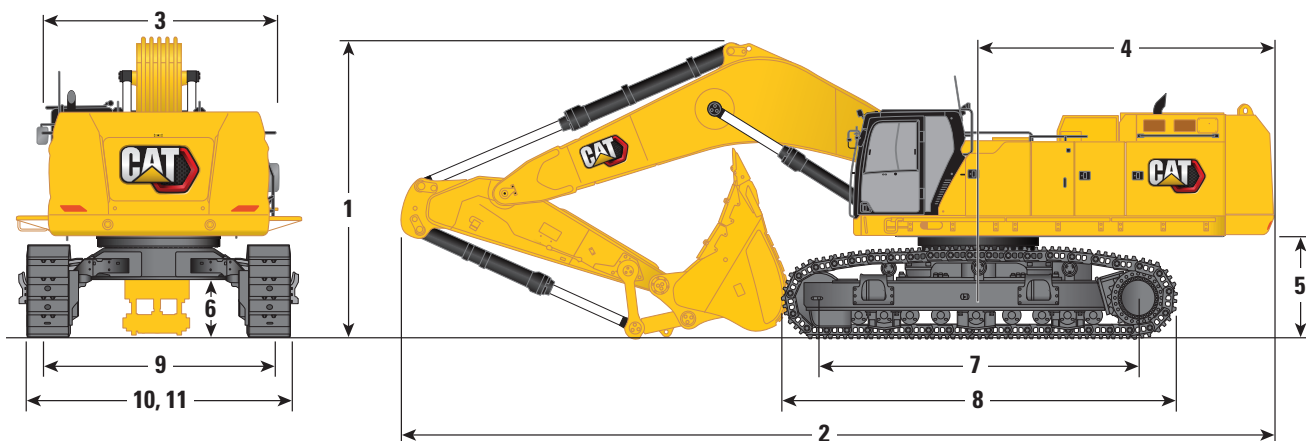
GP Boom	830 mm	2'9"	Mass Boom	830 mm	2'9"
---------	--------	------	-----------	--------	------

(continued on next page)

395 Hydraulic Excavator Specifications

Dimensions

All dimensions are approximate and may vary depending on bucket selection.

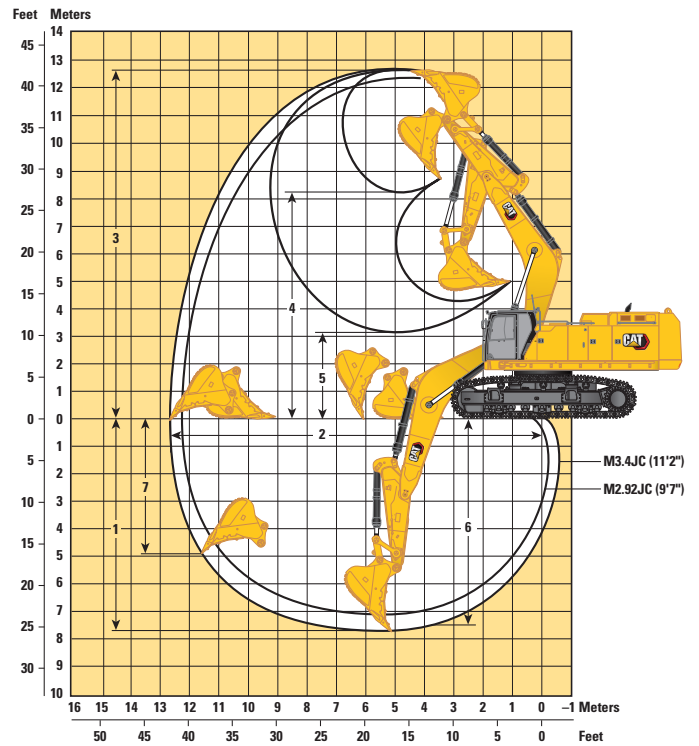
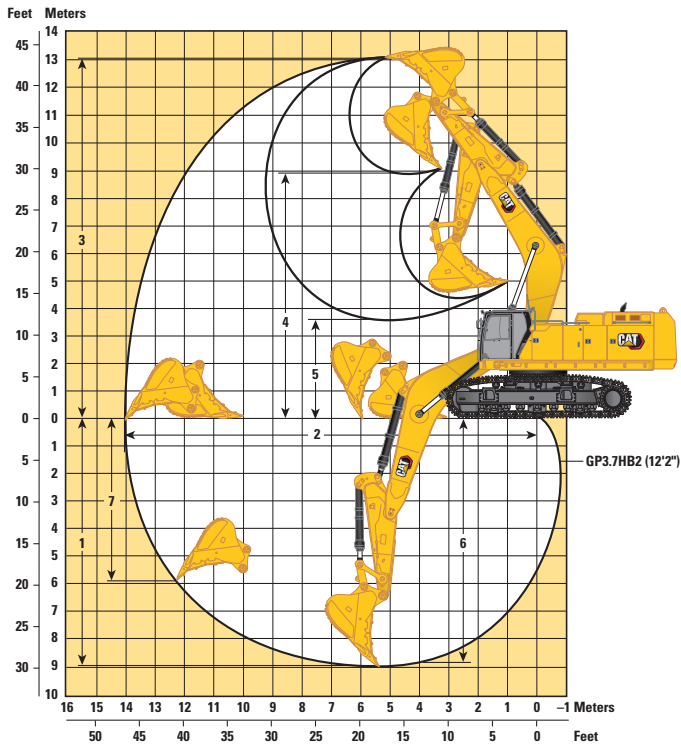


Boom Options	GP Boom 8.4 m (27'7")		Mass Boom 7.25 m (23'9")			
Stick Options	GP Stick GP3.7HD2 (12'2")		M3.4JC (11'2")		Mass Stick M2.92JC (9'7")	
7 Track Length – Length to Center of Rollers	5120 mm	16'10"	5120 mm	16'10"	5120 mm	16'10"
8 Track Length	6350 mm	20'10"	6350 mm	20'10"	6350 mm	20'10"
9 Track Gauge:						
Retracted	2750 mm	9'0"	2750 mm	9'0"	2750 mm	9'0"
Extended	3510 mm	11'6"	3510 mm	11'6"	3510 mm	11'6"
10 Track Width – Retracted:						
650 mm (26") Shoes	3400 mm	11'2"	3400 mm	11'2"	3400 mm	11'2"
750 mm (30") Shoes	3500 mm	11'6"	3500 mm	11'6"	3500 mm	11'6"
Track Width – Extended:						
650 mm (26") Shoes	4160 mm	13'8"	4160 mm	13'8"	4160 mm	13'8"
750 mm (30") Shoes	4260 mm	14'0"	4260 mm	14'0"	4260 mm	14'0"
11 Undercarriage Width – Retracted (with steps):						
650 mm (26") Shoes	3690 mm	12'1"	3690 mm	12'1"	3690 mm	12'1"
750 mm (30") Shoes	3690 mm	12'1"	3690 mm	12'1"	3690 mm	12'1"
Undercarriage Width – Extended (with steps):						
650 mm (26") Shoes	4450 mm	14'7"	4450 mm	14'7"	4450 mm	14'7"
750 mm (30") Shoes	4450 mm	14'7"	4450 mm	14'7"	4450 mm	14'7"
Bucket Type	SD		SDV		SDV	
Bucket Capacity	5.20 m ³	6.80 yd ³	6.50 m ³	8.50 yd ³	6.50 m ³	8.50 yd ³
Bucket Tip Radius	2440 mm	8'0"	2530 mm	8'4"	2530 mm	8'4"

395 Hydraulic Excavator Specifications

Working Ranges

All dimensions are approximate and may vary depending on bucket selection.



Boom Options

GP Boom
8.4 m (27'7")

Mass Boom
7.25 m (23'9")

Stick Options

GP Stick
GP3.7HD2 (12'2")

Mass Stick
M3.4JC (11'2")

M2.92JC (9'7")

	GP Boom 8.4 m (27'7")		Mass Boom 7.25 m (23'9")			
	GP Stick GP3.7HD2 (12'2")		Mass Stick M3.4JC (11'2")		M2.92JC (9'7")	
1 Maximum Digging Depth	8970 mm	29'5"	7660 mm	25'2"	7190 mm	23'7"
2 Maximum Reach at Ground Line	14 060 mm	46'2"	12 700 mm	41'8"	12 260 mm	40'3"
3 Maximum Cutting Height	13 200 mm	43'4"	12 590 mm	41'4"	12 370 mm	40'7"
4 Maximum Loading Height	8960 mm	29'5"	8190 mm	26'10"	7960 mm	26'1"
5 Minimum Loading Height	3730 mm	12'3"	3190 mm	10'6"	3660 mm	12'0"
6 Maximum Depth Cut for 2440 mm (8'0") Level Bottom	8850 mm	29'0"	7530 mm	24'8"	7050 mm	23'2"
7 Maximum Vertical Wall Digging Depth	5860 mm	19'3"	4970 mm	16'4"	4580 mm	15'0"
Bucket Digging Force (ISO)	383 kN	86,120 lbf	498 kN	111,950 lbf	497 kN	111,730 lbf
Stick Digging Force (ISO)	342 kN	76,930 lbf	360 kN	80,920 lbf	394 kN	88,570 lbf
Bucket Type	SD		SDV		SDV	
Bucket Capacity	5.20 m ³	6.80 yd ³	6.50 m ³	8.50 yd ³	6.50 m ³	8.50 yd ³
Bucket Tip Radius	2440 mm	8'0"	2530 mm	8'4"	2530 mm	8'4"

395 Hydraulic Excavator Specifications

Bucket Specifications and Compatibility

	Linkage	Width		Capacity		Weight		Fill %	GP Boom GP3.7 (12'2")	Mass Boom		
		mm	in	m ³	yd ³	kg	lb			M2.92 (9'7")	M3.4 (11'2")	
Pin-On (No Quick Coupler)												
Severe Duty	HB2	1750	69	3.90	5.10	4130	9,105	90	●			
	HB2	2000	79	4.60	6.02	4517	9,959	90	●			
Extreme Duty	HB2	1750	69	3.88	5.07	5065	11,166	90	●			
Severe Duty	JC	2000	79	4.60	6.02	6040	13,316	90		●	●	
	JC	2300	91	5.26	6.88	6734	14,846	90		●	◎	
Maximum load with pin-on (payload + bucket)								kg	13 146	17 340	15 964	
								lb	28,981	38,229	35,195	

The above loads are in compliance with hydraulic excavator standard EN474-5:2006+A3:2013, they do not exceed 87% of hydraulic lifting capacity or 75% of tipping capacity with front linkage fully extended at ground line with bucket curled.

Capacity based on ISO 7451:2007.

Maximum Material Density:

- 2100 kg/m³ (3,500 lb/yd³)
- ◎ 1800 kg/m³ (3,000 lb/yd³)

Caterpillar recommends using appropriate work tools to maximize the value customers receive from our products. Use of work tools, including buckets, which are outside of Caterpillar's recommendations or specifications for weight, dimensions, flows, pressures, etc. may result in less-than-optimal performance, including but not limited to reductions in production, stability, reliability, and component durability. Improper use of a work tool resulting in sweeping, prying, twisting and/or catching of heavy loads will reduce the life of the boom and stick.

Attachments Offering Guide

Not all Attachments are available in all regions. Consult your Cat dealer for configurations available in your region.

Match

No Match

PIN-ON ATTACHMENTS

Boom Type		GP	Mass	Mass
Stick Length		HD GP3.7 (12'2")	M2.92 (9'7")	M3.4 (11'2")
Hydraulic Hammers	H215 S	✓	✓	✓
Mobile Scrap and Demolition Shears	S3070 Flat Top	✓	✓	✓
	S3090 Flat Top	✓	✓	✓

CAT PIN GRABBER COUPLER ATTACHMENTS

Boom Type		GP
Stick Length		HD 3.70 m (12'2")
Hydraulic Hammers	H215 S	✓
Mobile Scrap and Demolition Shears	S3070 Flat Top	✓

395 Hydraulic Excavator Specifications

Typical Pass Match Guide

For maximum production and efficiency, we recommend that loading and hauling machines are matched to achieve optimal performance.

Configuration*:

Long Variable Gauge undercarriage, GP, GP3.7HB2 (12'2") stick, SD 5.2 m³ (6.8 yd³) bucket, 650 mm (26") double grouser shoes and 15 450 kg (34,060 lb) counterweight.

Passes Required to Fill Trucks to Rated Capacity

Material Type	Material Density	Fill Factor	Cat Articulated Trucks						Cat Off-Highway Trucks			
			730 EJ	730	735	740 GC	740 EJ	745	770G	772G	773G	775G
Earth	1600 kg/m ³ (2,700 lb/yd ³)	100%			3-4	4-5	4-5	5	4-5	5-6	6-7	8
Limestone	1540 kg/m ³ (2,600 lb/yd ³)	90%	3-4	4	4-5	5	5	5-6	5	6-7	7-8	

*The indicated pass match reflects the machine configuration, fill factor, and typical material density shown. Changes to machine configurations, fill factors, or material density as well as jobsite-specific factors may influence exact pass match recommendations for your application. Consult your Cat dealer for more information.

Configuration*:

Long Variable Gauge undercarriage, Mass boom, M2.92JC (9'7") stick, SDV 6.5 m³ (8.5 yd³) bucket, 650 mm (26") double grouser shoes and standard counterweight.

Passes Required to Fill Trucks to Rated Capacity

Material Type	Material Density	Fill Factor	Cat Articulated Trucks				Cat Off-Highway Trucks				
			735	740 GC	740 EJ	745	770G	772G	773E	773G	775G
Earth	1600 kg/m ³ (2,700 lb/yd ³)	100%			3-4	4	3-4	4-5	5-6	5-6	6
Limestone	1540 kg/m ³ (2,600 lb/yd ³)	90%	3-4	4	4-5	4-5	4-5	5	6	6	7

*The indicated pass match reflects the machine configuration, fill factor, and typical material density shown. Changes to machine configurations, fill factors, or material density as well as jobsite-specific factors may influence exact pass match recommendations for your application. Consult your Cat dealer for more information.

Standard and Optional Equipment

Standard and optional equipment may vary. Consult your Cat dealer for details.

	Standard	Optional		Standard	Optional
BOOMS, STICKS AND LINKAGES			CAT TECHNOLOGY		
7.25 m (23'9") Mass boom		✓	VisionLink®	✓*	
8.4 m (27'7") GP boom	✓		VisionLink Productivity		✓
2.92 m (9'7") Mass stick		✓	Remote Flash	✓	
3.4 m (11'2") Mass stick		✓	Remote Troubleshoot	✓	
3.7 m (12'2") Heavy Duty (HD) stick	✓		Cat Grade Connectivity		✓
Bucket linkage, HB2 type without lifting eye	✓		Compatibility with radios and base stations from Trimble, Topcon, and Leica	✓	
Bucket linkage, JC type without lifting eye		✓	Capability to install 3D grade systems from Trimble, Topcon, and Leica	✓	
CAB			Cat Grade 2D	✓	
Sound suppressed cab with viscous mounts	✓		Cat Grade 2D with Attachment Ready Option (ARO)		✓
High-resolution 254 mm (10") LCD touch screen monitor	✓		Cat Grade 3D single Global Navigation Satellite System (GNSS)		✓
Additional high-resolution LCD touch screen monitor for Cat Grade 2D and 3D		✓	Cat Grade 3D dual GNSS		✓
Automatic bi-level air conditioner	✓		Laser catcher		✓
Jog dial and shortcut keys for monitor control	✓		Cat Assist:	✓	
Keyless push-to-start engine control	✓		– Grade Assist		
Height-adjustable console, infinite with no tool	✓		– Boom Assist		
Tilt-up left-side console	✓		– Bucket Assist		
Cat Stick Steer		✓	– Swing Assist		
Auxiliary relay		✓	– Lift Assist		
Heated and cooled seat with automatic adjustable suspension	✓		Cat Payload:	✓	
51 mm (2") orange seat belt	✓		– Static weigh		
Bluetooth® integrated radio (including USB, auxiliary port and microphone)	✓		– Semiautomatic calibration		
2 × 12V DC outlets	✓		– Payload/cycle information		
Cup holder and storage compartments	✓		– USB reporting capability		
Fixed one-piece windshield	✓		Work tool recognition (PL161)	✓	
Parallel wiper with washer	✓		Work tool tracking (PL161)	✓	
Fixed glass laminated skylight	✓		Operator Coaching	✓	
LED dome light	✓		ELECTRICAL SYSTEM		
Floor welcome light	✓		Maintenance-free 1,400 CCA batteries (×2)	✓	
Roller front sunscreen	✓		Centralized electrical disconnect switch	✓	
Roller rear sunscreen	✓		Chassis light	✓	
Rear window emergency exit	✓		LED boom and cab lights		✓
Washable floor mat	✓		1,800 lumen LED premium surround lights		✓
Beacon ready	✓				

(continued on next page)

*Connect subscription only. Additional subscriptions are available. Contact your Cat dealer for availability.

395 Standard and Optional Equipment

Standard and Optional Equipment (continued)

Standard and optional equipment may vary. Consult your Cat dealer for details.

	Standard	Optional		Standard	Optional
ENGINE			SAFETY AND SECURITY		
Cold start block heater		✓	Cat Command (remote control)		✓
Three selectable modes: Power, Smart, Eco	✓		2D E-Fence:	✓	
Automatic engine speed control	✓		– E-ceiling		
Up to 4500 m (14,760 ft) altitude capability	✓		– E-floor		
52° C (126° F) high-ambient cooling capacity	✓		– E-swing		
–18° C (–0.4° F) cold start capability	✓		– E-wall		
–32° C (–25° F) cold start capability		✓	– E-cab avoidance		
Hydraulic reverse fan	✓		Auto hammer stop enhancement	✓	
Double element air filter with integrated pre-cleaner	✓		Lockable external tool/storage box	✓	
Three vertical side-by-side cooling system	✓		Lockable door, fuel, and hydraulic tank locks	✓	
95 Amp alternator	✓		Lockable fuel drain compartment	✓	
DEF Tank	✓		Lockable disconnect switch	✓	
HYDRAULIC SYSTEM			Service platforms with anti-skid plate	✓	
Boom and stick regeneration circuit	✓		Full handrail mount on platform	✓	
Electronic main control valve	✓		Mirror package	✓	
Dedicated closed loop swing circuit	✓		Signaling/warning horn	✓	
Automatic hydraulic oil warmup	✓		Travel alarm		✓
Automatic swing parking brake	✓		Swing alarm		✓
Anti-reaction valve	✓		Ground-level secondary engine shutoff switch	✓	
High performance hydraulic return filter	✓		Rear and right-hand-sideview cameras	✓	
Two speed travel	✓		360° visibility		✓
Advanced tool control		✓	Inspection lighting		✓
Hydraulic efficiency monitoring		✓	SERVICE AND MAINTENANCE		
			Integrated vehicle health management system	✓	
			Auto lube ready	✓	
			Reversing cooling fan	✓	
			Grouped location for engine oil and fuel filters	✓	
			Scheduled Oil Sampling (S·O·S SM) ports	✓	
			QuickEvac TM maintenance ready		✓
			UNDERCARRIAGE AND STRUCTURES		
			Long variable gauge undercarriage	✓	
			650 mm (26") double grouser track shoes	✓	
			750 mm (30") double grouser track shoes		✓
			Grease lubricated track	✓	
			Two-piece full-length track guiding guards		✓
			Swivel guard	✓	
			HD bottom guard	✓	
			HD travel motor guard	✓	
			15.45 mt (34,060 lb) counterweight	✓	
			Towing eye on base frame	✓	

Dealer Installed Kits and Attachments

Attachments may vary. Consult your Cat dealer for details.

CAB

- Joystick with horizontal sliders
- Left Hand (LH)/Right Hand (RH) electrical pedal for tool control
- Dual exit rear window kit
- Front windshield laminated glass (P5A glass, EU demolition regulation)

SAFETY AND SECURITY

- Bluetooth key fob
- 76 mm (3") retractable seat belt
- Cat Command – Remote control kit

GUARDS

- OPG (not compatible with cab light cover, rain protector)
- Mesh guard full front (not compatible with cab light cover, rain protector)
- Mesh guard lower half front
- Rain protector for front windshield plus cab light cover

OTHER ATTACHMENTS

- GNSS antennae

395 Environmental Declaration

The following information applies to the machine at the time of final manufacture as configured for sale in the regions covered in this document. The content of this declaration is valid as of the date issued; however, content related to machine features and specifications are subject to change without notice. For additional information, please see the machine's Operation and Maintenance Manual.

For more information on sustainability in action and our progress, please visit <https://www.caterpillar.com/en/company/sustainability>.

Engine

- The Cat® C18 engine meets U.S. EPA Tier 4 Final, EU Stage V, Korea Stage V, and Japan 2014 emission standards.
- Cat diesel engines are required to use ULSD (ultra-low sulfur diesel fuel with 15 ppm of sulfur or less) or ULSD blended with the following lower-carbon intensity fuels** up to:
 - ✓ 20% biodiesel FAME (fatty acid methyl ester)*
 - ✓ 100% renewable diesel, HVO (hydrotreated vegetable oil) and GTL (gas-to-liquid) fuels

Refer to guidelines for successful application. Please consult your Cat dealer or “Caterpillar Machine Fluids Recommendations” (SEBU6250) for details.

**Engines with no aftertreatment devices can use higher blends, up to 100% biodiesel (for use of blends higher than 20% biodiesel, consult your Cat dealer).*

***Tailpipe greenhouse gas emissions from lower-carbon intensity fuels are essentially the same as traditional fuels.*

Air Conditioning System

- The air conditioning system on this machine contains the fluorinated greenhouse gas refrigerant R134a (Global Warming Potential = 1430). The system contains 1.0 kg (2.2 lb) of refrigerant which has a CO₂ equivalent of 1.43 metric tonnes (1.576 tons).

Paint

- Based on best available knowledge, the maximum allowable concentration, measured in parts per million (PPM), of the following heavy metals in paint are:
 - Barium < 0.01%
 - Cadmium < 0.01%
 - Chromium < 0.01%
 - Lead < 0.01%

Sound Performance

ISO 6395:2008 (external) – 109 dB(A)

ISO 6396:2008 (inside cab) – 73 dB(A)

- Hearing protection may be needed when operating with an open operator station and cab (when not properly maintained or doors/windows open) for extended periods or in a noisy environment.

Oils and Fluids

- Caterpillar factory fills with ethylene glycol coolants. Cat Diesel Engine Antifreeze/Coolant (DEAC) and Cat Extended Life Coolant (ELC) can be recycled. Consult your Cat dealer for more information.
- Cat Bio HYDO™ Advanced is an EU Ecolabel approved biodegradable hydraulic oil.
- Additional fluids are likely to be present, please consult the Operations and Maintenance Manual or the Application and Installation guide for complete fluid recommendations and maintenance intervals.

Features and Technology

- The following features and technology may contribute to fuel savings and/or carbon reduction. Features may vary. Consult your Cat dealer for details.
 - Advanced hydraulic systems balance power and efficiency
 - Smart mode matches machine power to digging requirements automatically
 - Eco mode minimizes fuel consumption for light applications
 - One-touch low idle with automatic engine speed control
 - Extended maintenance intervals reduce fluid and filter consumption

Recycling

- The materials included in machines are categorized as below with approximate weight percentage. Because of variations of product configurations, the following values in the table may vary.

Material Type	Weight Percentage
Steel	89.46%
Iron	5.97%
Nonferrous Metal	1.26%
Mixed Metal	0.08%
Mixed-Metal and Nonmetal	0.74%
Plastic	0.11%
Rubber	0.35%
Mixed Nonmetallic	0.24%
Fluid	1.27%
Other	0.52%
Uncategorized	0.00%
Total	100%

- A machine with higher recyclability rate will ensure more efficient usage of valuable natural resources and enhance End-of-Life value of the product. According to ISO 16714:2008 (Earthmoving machinery – Recyclability and recoverability – Terminology and calculation method), recyclability rate is defined as percentage by mass (mass fraction in percent) of the new machine potentially able to be recycled, reused, or both.

All parts in the bill of material are first evaluated by component type based on a list of components defined by the ISO 16714:2008 and Japan CEMA (Construction Equipment Manufacturers Association) standards. Remaining parts are further evaluated for recyclability based on material type.

Because of variations of product configurations, the following value in the table may vary.

Recyclability – 98%



395

Long Reach Hydraulic Excavator

Maximum Reach. Greater Production. Reinforced Durability.

The Cat® 395 Long Reach Excavator (LRE) combines premium performance and simple-to-use technology with steep slope capability reaching out to 28 m (91'10") and dig depth of 21 700 mm (71'2"). The long undercarriage with the frame extension and 21.6 mt (47,600 lb) counterweight provide a stable platform for long-reach digging. This machine excels in the ultimate long-distance dredging, ditch cleaning, settling pond clean out, waterway and canal maintenance as well as vegetation control.



395 LRE Hydraulic Excavator Specifications

Engine

Engine Model	Cat® C18	
Net Power		
ISO 9249	404 kW	542 hp
ISO 9249 (DIN)	550 hp (metric)	
Engine Power		
ISO 14396	405 kW	543 hp
ISO 14396 (DIN)	551 hp (metric)	
Bore	145 mm	6 in
Stroke	183 mm	7 in
Displacement	18.1 L	1105 in ³
Biodiesel capability	Up to B20 ⁽¹⁾	

- Meets U.S. EPA Tier 4 Final, EU Stage V, Japan 2014 and Korea Stage V emission standards.
- Recommended for use up to 4500 m (14,764 ft) altitude with engine power derate above 3000 m (9,842.5 ft).
- Advertised power is tested per the specified standard in effect at the time of manufacture.
- Net power advertised is the power available at the flywheel when the engine is equipped with fan, air intake system, exhaust system and alternator.
- Rated speed at 1,900 rpm

⁽¹⁾Cat diesel engines are required to use ULSD (ultra-low sulfur diesel fuel with 15 ppm of sulfur or less) or ULSD blended with the following lower-carbon intensity fuels** up to:

- ✓ 20% biodiesel FAME (fatty acid methyl ester)*
- ✓ 100% renewable diesel, HVO (hydrotreated vegetable oil) and GTL (gas-to-liquid) fuels

Refer to guidelines for successful application. Please consult your Cat dealer or “Caterpillar Machine Fluids Recommendations” (SEBU6250) for details.

**Engines with no aftertreatment devices can use higher blends, up to 100% biodiesel (for use of blends higher than 20% biodiesel, consult your Cat dealer).*

***Tailpipe greenhouse gas emissions from lower-carbon intensity fuels are essentially the same as traditional fuels.*

Swing Mechanism

Maximum Swing Torque	362.5 kN·m	267,333 lb-ft
----------------------	------------	---------------

Weights

Operating Weight	113 300 kg	249,700 lb
------------------	------------	------------

- Long Undercarriage with frame extension, LRE Boom, LRE 11.8 m (38'9") stick, Heavy Duty (HD) 1.97 m³ (2.58 yd³) bucket, 900 mm (35") double grouser shoes, and 21.6 mt (47,600 lb) counterweight.

Track

Standard Track Shoes Width	900 mm	35 in
Optional Track Shoes Width	650 mm	26 in
Optional Track Shoes Width	750 mm	30 in
Number of Shoes (each side)	51	
Number of Track Rollers (each side)	9	
Number of Carrier Rollers (each side)	3	

Drive

Gradeability	30°/58%	
Maximum Travel Speed	4.6 km/h	2.8 mph
Maximum Drawbar Pull	581 kN	130,614 lbf

Hydraulic System

Main System – Maximum Flow (Implement)	1064 L/min (532 × 2 pumps)	281 gal/min (141 × 2 pumps)
Main System – Maximum Flow (Implement)	1008 L/min (504 × 2 pumps)	266 gal/min (133 × 2 pumps)
Swing System – Maximum Flow	295 L/min	78 gal/min
Swing System – Maximum Flow	279 L/min	74 gal/min
Maximum Pressure – Equipment – Implement	37 000 kPa	5,366 psi
Maximum Pressure – Travel	35 000 kPa	5,076 psi
Maximum Pressure – Swing	31 000 kPa	4,496 psi
Boom Cylinder – Bore	210 mm	8 in
Boom Cylinder – Stroke	1967 mm	77 in
Stick Cylinder – Bore	220 mm	8.7 in
Stick Cylinder – Stroke	2262 mm	89 in
CB2 Bucket Cylinder – Bore	135 mm	5 in
CB2 Bucket Cylinder – Stroke	1156 mm	46 in

(continued on next page)

395 LRE Hydraulic Excavator Specifications

Service Refill Capacity

Fuel Tank Capacity	1220 L	322.3 gal
Cooling System	71 L	18.8 gal
Engine Oil (with filter)	67 L	17.7 gal
Swing Drive (each)	24 L	6.3 gal
Final Drive (each)	20 L	5.3 gal
Hydraulic System (including tank)	793 L	209.5 gal
Hydraulic Tank (including suction pipe)	372 L	98.2 gal
Diesel Exhaust Fluid (DEF) Tank	80 L	21.1 gal

Standards

Brakes	ISO 10265: 2008
Operator Protective Guards (OPG) (optional)	ISO 10262:1998 Level II

Sound Performance

ISO 6395:2008 (external)	109 dB(A)
ISO 6396:2008 (inside cab)	73 dB(A)

- External Sound – The spectator sound power level is measured according to the test procedures and conditions specified in ISO 6395:2008 for a Caterpillar machine that is properly equipped and maintained. The measurements were conducted at 70% of the maximum engine cooling fan speed.
- Internal Sound – The operator sound pressure level is measured according to the test procedures and conditions specified in ISO 6396:2008 for a cab offered by Caterpillar, when properly installed and maintained and tested with the door and windows closed. The measurements were conducted at 70% of the maximum engine cooling fan speed.
- Hearing protection may be needed when operating with an open operator station and cab (when not properly maintained for doors/windows open) for extended periods or in noisy environment(s).

Air Conditioning System

The air conditioning system on this machine contains the fluorinated greenhouse gas refrigerant R134a (Global Warming Potential = 1430). The system contains 1.00 kg of refrigerant which has a CO₂ equivalent 1.430 metric tonne.

395 LRE Hydraulic Excavator Specifications

Operating Weights and Ground Pressures

	650 mm (26") Double Grouser Shoes		750 mm (30") Double Grouser Shoes		900 mm (35") Double Grouser Shoes	
	Weight	Ground Pressure	Weight	Ground Pressure	Weight	Ground Pressure
	kg (lb)	kPa (psi)	kg (lb)	kPa (psi)	kg (lb)	kPa (psi)
21.6 mt (47,600 lb) Counterweight + Long Undercarriage with Frame Extension Base Machine						
LRE Boom + 11.8 m (38'9") LRE Stick + 1.97 m ³ HD (2.58 yd ³) Bucket	111 300 (245,400)	151.2 (21.9)	112 200 (247,400)	132.1 (19.2)	113 300 (249,700)	111.1 (16.1)

All operating weights include a 90% fuel tank with 75 kg (165 lb) operator.

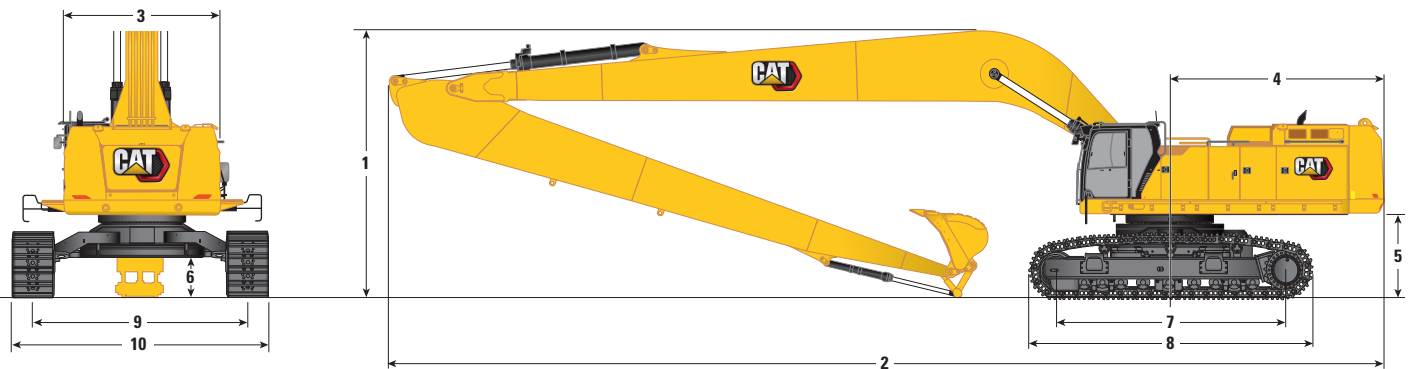
Major Component Weights

	kg	lb
Base Machine Weight (including upperframe, Long undercarriage, counterweight, boom cylinders – without boom, stick, bucket, stick cylinder, bucket cylinder, tracks, fuel, operator)		
Counterweight, Swing Frame, Base Frame with Track Rollers and Carrier Rollers	76 970	169,700
Track Shoes:		
650 mm (26") Width, 20.5 mm (0.8") Thick, Double Grouser Track Shoes	9290	20,470
750 mm (30") Width, 20.5 mm (0.8") Thick, Double Grouser Track Shoes	10 160	22,400
900 mm (35") Width, 20.5 mm (0.8") Thick, Double Grouser Track Shoes	11 220	24,740
Two Boom Cylinders	1820	4,010
Weight of 90% Fuel Tank and 75 kg (165 lb) Operator	1010	2,230
Counterweight:		
21.6 mt (47,600 lb) Counterweight	21 600	47,620
Swing Frames:		
Swing Frame	9100	20,060
Long Undercarriage:		
Base Frame with Track Rollers and Carrier Rollers	32 740	72,180
Booms (including lines, pins, stick cylinder):		
15.5 m (50'10") LRE boom	14 510	31,990
Sticks (including lines, pins, bucket cylinder, bucket linkage):		
11.8 m (38'9") LRE stick	5930	13,070
Buckets (without linkage):		
1.97 m ³ (2.58 yd ³) HD	1294	2,853
Frame Extension	8123	17,908

395 LRE Hydraulic Excavator Specifications

Dimensions

All dimensions are approximate and may vary depending on bucket selection.



Boom Option

LRE Boom
15.5 m (50'10")

Stick Option

LRE Stick
11.8 m (38'9")

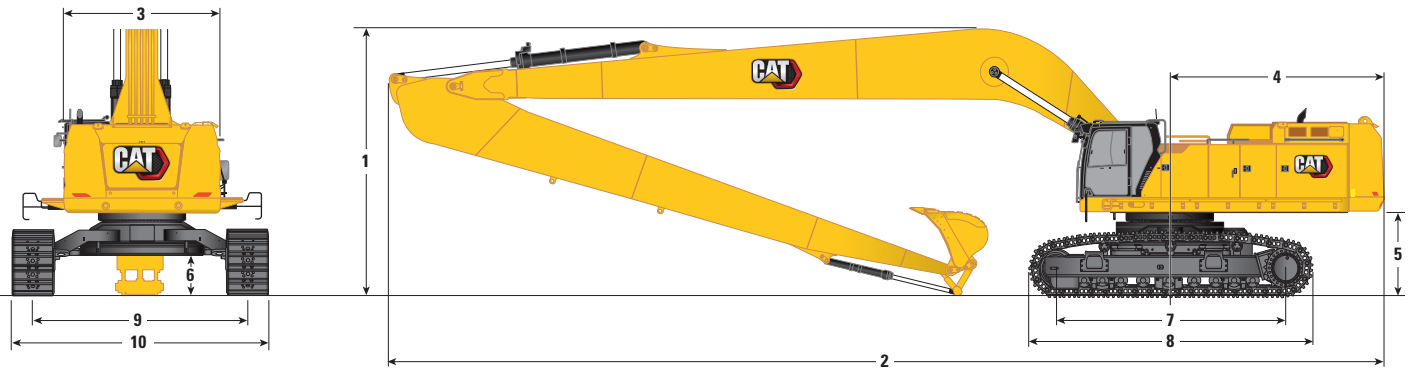
1 Machine Height:		
Cab Height	3910 mm	12'10"
Opg Height	4050 mm	13'4"
Handrail Height	3990 mm	13'1"
With Boom/Stick/Bucket Installed	11 860 mm	38'11"
With Boom/Stick Installed	11 860 mm	38'11"
With Boom/Stick/Bucket Installed (with auxiliary lines)	11 860 mm	38'11"
With Boom/Stick Installed (with auxiliary lines)	11 860 mm	38'11"
2 Machine Length:		
With Boom/Stick/Bucket Installed	19 900 mm	65'3"
With Boom/Stick Installed	19 900 mm	65'3"
With Boom/Stick/Bucket Installed (with auxiliary lines)	19 900 mm	65'3"
With Boom/Stick Installed (with auxiliary lines)	19 900 mm	65'3"
3 Upperframe Width		
Without Walkways	3490 mm	11'5"
With Walkways	4510 mm	14'10"
Walkways Width	500 mm	1'8"
4 Tail Swing Radius	4840 mm	15'11"
5 Counterweight Clearance	1880 mm	6'2"
Bucket Type		HD
Bucket Capacity	1.97 m ³	2.58 yd ³
Bucket Tip Radius	1659 mm	5'5"

(continued on next page)

395 LRE Hydraulic Excavator Specifications

Dimensions *(continued)*

All dimensions are approximate and may vary depending on bucket selection.



Boom Option

LRE Boom
15.5 m (50'10")

Stick Option

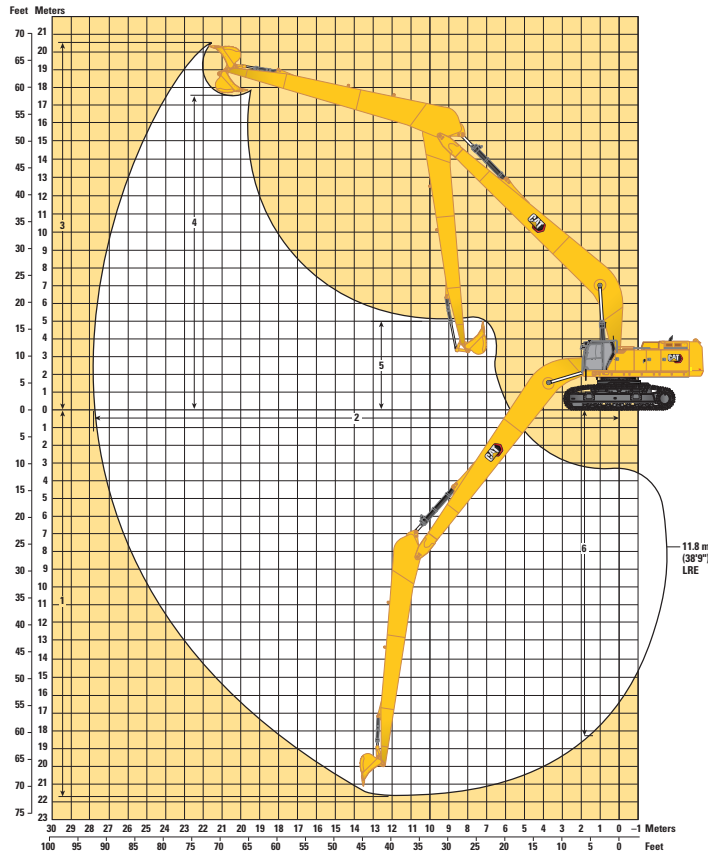
LRE Stick
11.8 m (38'9")

6 Ground Clearance	915 mm	3'0"
7 Length to Center of Rollers	5120 mm	16'10"
8 Track Length	6350 mm	20'10"
9 Track Gauge – with Frame Extension	4840 mm	15'11"
Track Width – with Frame Extension:		
650 mm (26") Shoe	5490 mm	18'0"
750 mm (30") Shoe	5590 mm	18'4"
900 mm (35") Shoe	5740 mm	18'10"
10 Undercarriage Width (with steps) – with Frame Extension:		
650 mm (26") Shoe	5780 mm	19'0"
750 mm (30") Shoe	5780 mm	19'0"
900 mm (35") Shoe	5780 mm	19'0"
Bucket Type	HD	
Bucket Capacity	1.97 m ³	2.58 yd ³
Bucket Tip Radius	1659 mm	5'5"

395 LRE Hydraulic Excavator Specifications

Working Ranges

All dimensions are approximate and may vary depending on bucket selection.



Boom Option

LRE Boom
15.5 m (50'10")

Stick Option

LRE Stick
11.8 m (38'9")

1 Maximum Digging Depth	21 700 mm	71'2"
2 Maximum Reach at Ground Line	27 820 mm	91'3"
3 Maximum Cutting Height	20 530 mm	67'4"
4 Maximum Loading Height	17 580 mm	57'8"
5 Minimum Loading Height	1980 mm	6'6"
6 Maximum Vertical Wall Digging Depth	18 290 mm	60'0"
Bucket Digging Force (ISO)	190 kN	42,600 lbf
Stick Digging Force (ISO)	144 kN	32,310 lbf
Bucket Type	HD	
Bucket Capacity	1.97 m ³	2.58 yd ³
Bucket Tip Radius	1659 mm	5'5"

395 LRE Standard and Optional Equipment

Standard and Optional Equipment

Standard and optional equipment may vary. Consult your Cat dealer for details.

	Standard	Optional		Standard	Optional
BOOMS, STICKS AND LINKAGES			HYDRAULIC SYSTEM		
15.5 m (50'10") LRE boom	✓		SmartBoom		✓
11.8 m (38'9") LRE stick	✓		Boom and stick regeneration circuit	✓	
CB2 linkage without lifting eye	✓		Electronic main control valve	✓	
Submarine linkage and sticks sensors protection	✓		Dedicated closed loop swing circuit	✓	
CAT TECHNOLOGY			Automatic hydraulic oil warmup	✓	
VisionLink®	✓		Automatic swing parking brake	✓	
Remote Flash	✓		Anti-reaction valve	✓	
Remote Troubleshoot	✓		High performance hydraulic return filter	✓	
Cat Grade 2D	✓		Two speed travel	✓	
Cat Payload	✓		Bio hydraulic oil capability	✓	
Work tool recognition	✓		Lift Assist	✓	
ELECTRICAL SYSTEM			Advanced tool control		✓
Maintenance-free 1,400 CCA batteries (×2)	✓		Medium-pressure auxiliary circuit		✓
Centralized electrical disconnect switch	✓		Quick coupler circuit		✓
Chassis light	✓		Hydraulic efficiency monitoring		✓
LED boom and cab lights		✓			
1,800 lumen LED premium surround lights		✓			
ENGINE					
Cold start block heater		✓			
Three selectable modes: Power, Smart, Eco	✓				
Automatic engine speed control	✓				
Up to 4500 m (14,760 ft) altitude capability	✓				
52° C (126° F) high-ambient cooling capacity	✓				
-18° C (-0.4° F) cold start capability	✓				
-32° C (-25° F) cold start capability		✓			
Hydraulic reverse fan	✓				
Double element air filter with integrated pre-cleaner	✓				
Three vertical side-by-side cooling system	✓				
Remote disable	✓				
95 Amp alternator	✓				

(continued on next page)

Standard and Optional Equipment *(continued)*

Standard and optional equipment may vary. Consult your Cat dealer for details.

	Standard	Optional		Standard	Optional
SAFETY AND SECURITY			SERVICE AND MAINTENANCE		
Caterpillar One Key security system	✓		Integrated vehicle health management system	✓	
2D E-Fence:	✓		Auto lube ready	✓	
– E-ceiling			Reversing cooling fan	✓	
– E-floor			Grouped location for engine oil and fuel filters	✓	
– E-swing			Fast-fill fuel system		✓
– E-wall			Scheduled Oil Sampling (S·O·S SM) ports	✓	
– E-cab avoidance			QuickEvac™ maintenance ready		✓
Lockable external tool/storage box	✓		Electric refueling pump with auto shutoff		✓
Lockable door, fuel, and hydraulic tank locks	✓		UNDERCARRIAGE AND STRUCTURES		
Lockable fuel drain compartment	✓		Long undercarriage	✓	
Lockable disconnect switch	✓		650 mm (26") double grouser track shoes		✓
Service platforms with anti-skid plate	✓		750 mm (30") double grouser track shoes		✓
Full handrail mount on platform	✓		900 mm (35") double grouser track shoes		✓
Mirror package	✓		Grease lubricated track	✓	
Signaling/warning horn	✓		Three-piece segmented track guiding guards		✓
Travel alarm	✓		Two-piece full-length track guiding guards		✓
Swing alarm		✓	Swivel guard	✓	
Ground-level secondary engine shutoff switch	✓		HD bottom guard	✓	
Rear and right-hand-sideview cameras	✓		HD travel motor guard	✓	
360° visibility		✓	21.6 mt (47,600 lb) counterweight	✓	
Boom lowering check valve		✓	Towing eye on base frame	✓	
Stick lowering check valve		✓	LRE track extension frame	✓	
Walkway	✓				
Tilt-up walkway		✓			
Inspection lighting		✓			
Cat Command (remote control)		✓			

Dealer Installed Kits and Attachments

Attachments may vary. Consult your Cat dealer for details.

CAB

- Radial lower wiper (for deluxe cab only)
- Parallel wiper kit (for deluxe cab only)
- Joystick with horizontal sliders
- Left Hand (LH)/Right Hand (RH) electrical pedal for tool control
- Dual exit rear window kit
- Front windshield laminated glass (P5A glass, EU demolition regulation)

SAFETY AND SECURITY

- Bluetooth® key fob
- 76 mm (3") retractable seat belt
- Cat Detect – People Detection
- Cat Command – Remote control kit

GUARDS

- OPG (not compatible with cab light cover, rain protector)
- Mesh guard full front (not compatible with cab light cover, rain protector)
- Mesh guard lower half front
- Rain protector for front windshield plus cab light cover

OTHER ATTACHMENTS

- GNSS antennae
- Submarine kit

Cab Options

	Deluxe	Premium
Sound suppressed cab with viscous mounts	●	●
High-resolution 254 mm (10") LCD touch screen monitor	●	●
Additional high-resolution LCD touch screen monitor for Cat Grade 2D and 3D	○	○
Automatic bi-level air conditioner	●	●
Jog dial and shortcut keys for monitor control	●	●
Keyless push-to-start engine control	●	●
Height-adjustable console, infinite with no tool	●	●
Tilt-up left-side console	●	●
Cat Stick Steer	○	○
Auxiliary relay	○	○
Heated seat with air-adjustable suspension	●	X
Heated and cooled seat with automatic adjustable suspension	X	●
51 mm (2") orange seat belt	●	●
Bluetooth integrated radio (including USB, auxiliary port and microphone)	●	●
2 × 12V DC outlets	●	●
Cup holder and storage compartments	●	●
Fixed one-piece windshield	X	○
Openable two-piece front window	●	○
Upper radial wiper with washer	●	X
Parallel wiper with washer	X	●
Openable polycarbonate skylight hatch	●	○
Fixed glass laminated skylight	X	○
LED dome light	●	●
Floor welcome light	●	●
Roller front sunscreen	●	●
Roller rear sunscreen	○	●
Rear window emergency exit	●	●
Washable floor mat	●	●
Beacon ready	●	●

● Standard

○ Optional

X Not available

For more complete information on Cat products, dealer services, and industry solutions, visit us on the web at www.cat.com

© 2024 Caterpillar
All rights reserved

Materials and specifications are subject to change without notice. Featured machines in photos may include additional equipment. See your Cat dealer for available options.

CAT, CATERPILLAR, LET'S DO THE WORK, their respective logos, "Caterpillar Corporate Yellow," the "Power Edge" and Cat "Modern Hex" trade dress as well as corporate and product identity used herein, are trademarks of Caterpillar and may not be used without permission. VisionLink is a trademark of Caterpillar Inc., registered in the United States and in other countries.

Based on the Labor, Safety and Health Laws in Japan, employer of small construction equipment are required to provide specific training for all operators on machines with ship weight less than 3 metric ton. For machines greater than 3 metric ton, operator needs to obtain operator license certification from a Government approved registered training school.

AEXQ2913-05 (06-2024)
Replaces AEXQ2913-04
Build Number: 07D
(Japan)

