

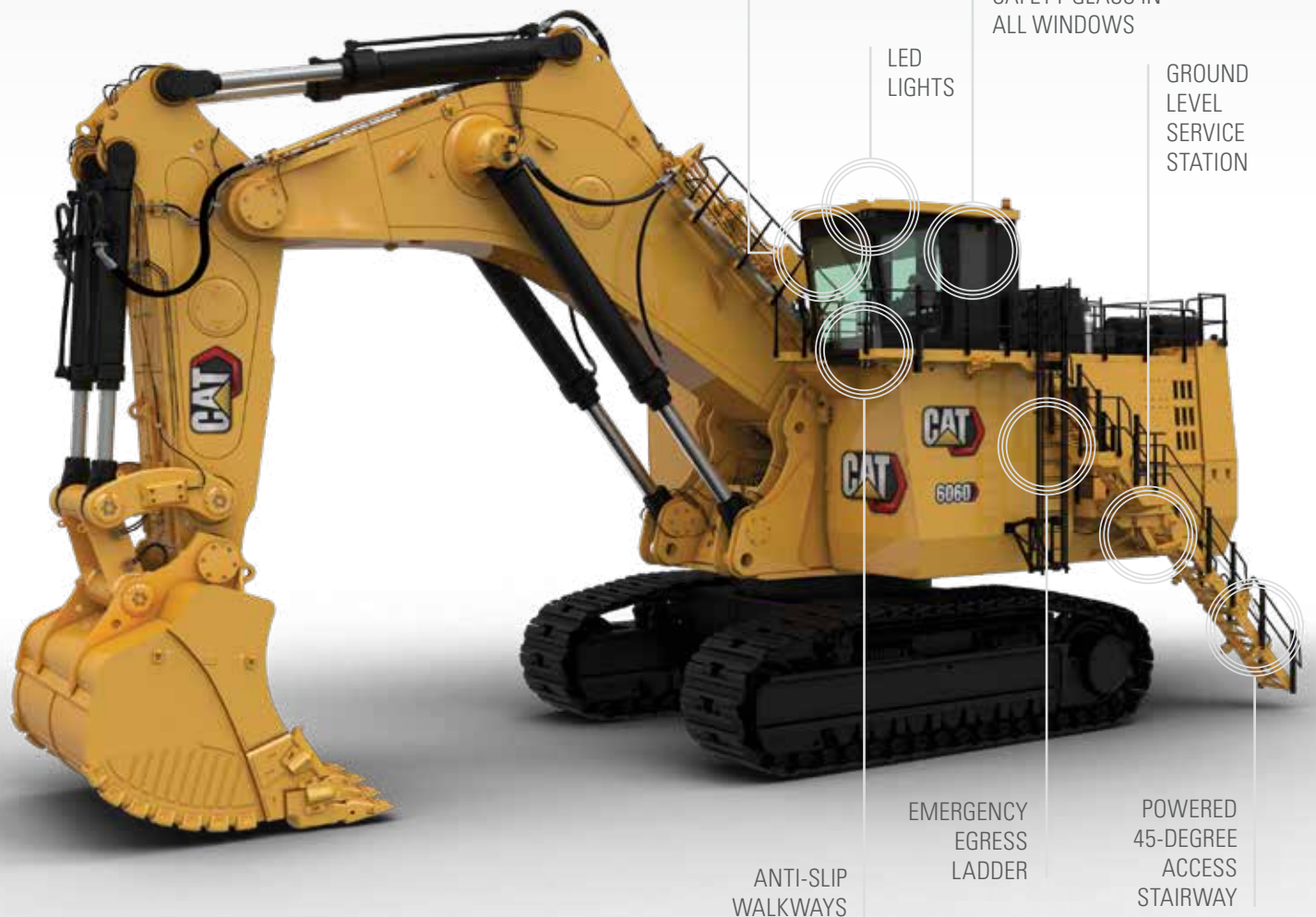
FOCUS ON SAFETY

IN, ON AND AROUND THE SHOVEL

The 6060 is designed with the operator in mind and has been updated to incorporate mining safety best practices as part of its standard design. With an eye on safety during both operation and maintenance, the design focuses on visibility, access and egress, hydraulic hose routing, electric wiring and fire prevention.

EXCELLENT VISIBILITY

The position of the cab module provides excellent visibility of the digging and loading areas, and visibility is significantly improved thanks to a floor window that provides a view to the tracks. Integrated Cat MineStar and camera displays also enhance visibility.



SAFETY GLASS IN
ALL WINDOWS

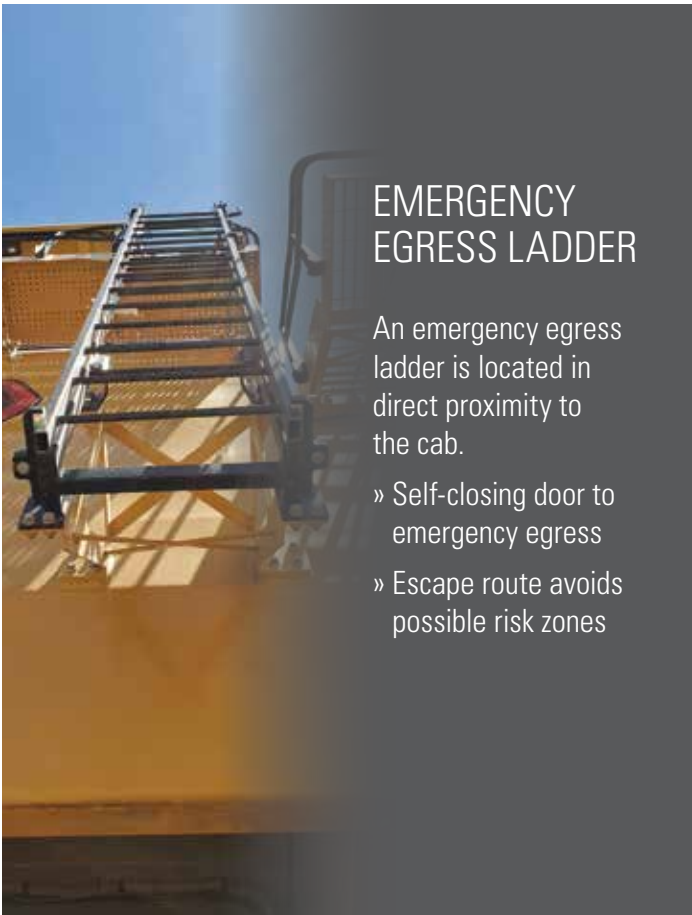
LED
LIGHTS

GROUND
LEVEL
SERVICE
STATION

EMERGENCY
EGRESS
LADDER

POWERED
45-DEGREE
ACCESS
STAIRWAY

ANTI-SLIP
WALKWAYS



EMERGENCY EGRESS LADDER

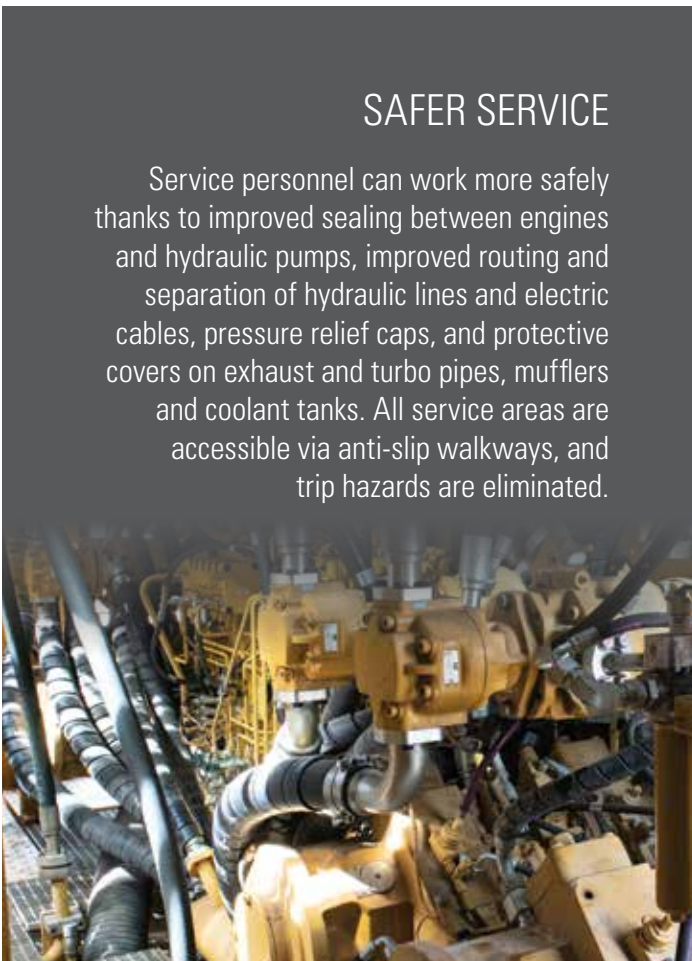
An emergency egress ladder is located in direct proximity to the cab.

- » Self-closing door to emergency egress
- » Escape route avoids possible risk zones



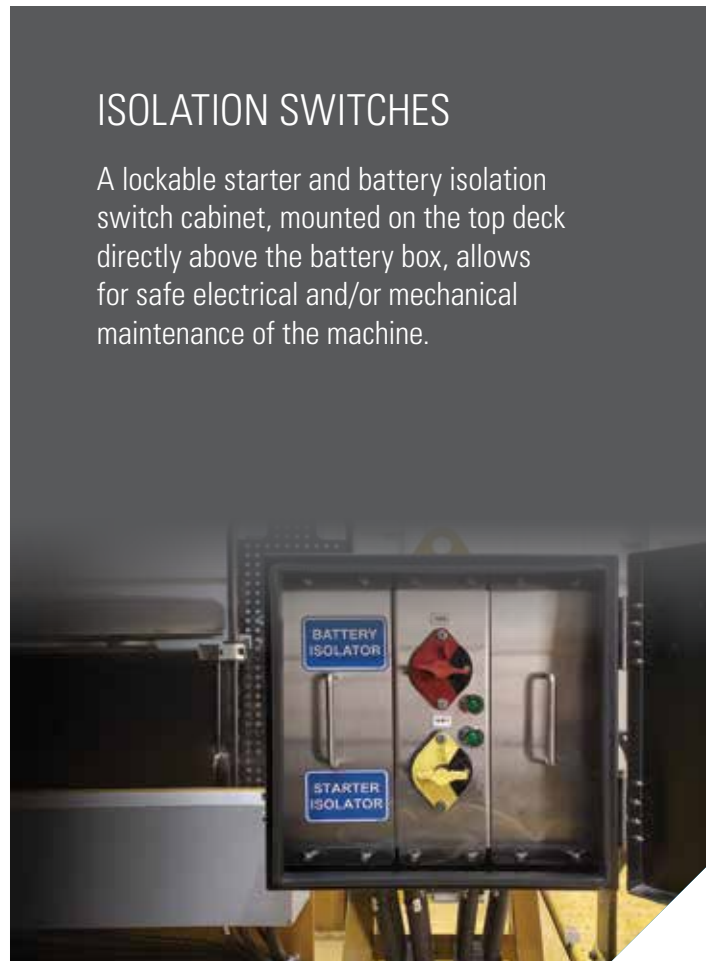
SAFER ACCESS AND EGRESS

The 45-degree hydraulically operated access stairway features emergency lowering via a nitrogen accumulator, which ensures it remains operational even when engines shut off. Machine swing and propel capabilities are automatically disabled while the boarding stairway is lowered.



SAFER SERVICE

Service personnel can work more safely thanks to improved sealing between engines and hydraulic pumps, improved routing and separation of hydraulic lines and electric cables, pressure relief caps, and protective covers on exhaust and turbo pipes, mufflers and coolant tanks. All service areas are accessible via anti-slip walkways, and trip hazards are eliminated.



ISOLATION SWITCHES

A lockable starter and battery isolation switch cabinet, mounted on the top deck directly above the battery box, allows for safe electrical and/or mechanical maintenance of the machine.