

# PM310 | PM312 | PM313

## COLD PLANERS



---

### Engine Power

U.S. EPA Tier 4 Final, EU Stage V, Korea Tier 4 Final

251 kW (336.6 hp)

Brazil MAR-1, equivalent to U.S. EPA Tier 3 and EU Stage IIIA

246 kW (330 hp)

### Milling Width

PM310

1000 mm (39.4 in)

PM312

1225 mm (48.2 in)

PM313

1300 mm (51.2 in)

See Technical Specifications for detailed engine emissions information.



## THE ASPHALT MILLING MACHINES YOU'VE BEEN WAITING FOR

Every Cat® cold planer was developed with input from milling contractors like you and the payoff is immediate:

- + INCREASED PRODUCTIVITY
- + LOWER OPERATING COSTS
- + SERVICE AND SUPPORT FROM THE CAT DEALER NETWORK



# THE CAT® PM310, PM312 & PM313 COLD PLANERS

The **PM310, PM312 AND PM313** are equipped to deliver efficient production with the milling precision you need to stay competitive. With three milling widths and options available for enhanced versatility, you can customize your machine to suit numerous applications. Whether texturing a road or milling an airport runway, a configuration is available to help you meet your job requirements.



---

## IMPROVED OPERATION

An ergonomic work area with better visibility to the cutting area keeps operators informed and comfortable.

---

## MILLING PRECISION

Achieve perfect cuts with integrated technology, System K rotors, and Cat track or wheeled undercarriages offer a balance of traction, speed and maneuverability.

---

## IMPROVED SERVICE

Designed for easy access to service areas, an optional rotor turning device and convenient parts availability to make maintenance fast and easy.



MADE TO

# GET THE WORK DONE

A fuel-efficient engine and effective conveyor system provide the power and performance needed to keep up with the demands of grinding through pavement hour after hour.

## FUEL-EFFICIENT POWER

The Cat 9.3 engine is optimized to reduce fuel burn and deliver the power needed to help you meet production goals. A high capacity cooling system keeps the engine at ideal temperatures for optimal fuel efficiency and lower emissions. Features like Automatic Load Control and multiple rotor speed selections optimize demand on the engine for smooth and efficient operation.

## EFFICIENT MATERIAL REMOVAL

High-capacity conveyors provide efficient removal of milled material with outstanding discharge control. A wide opening and seamless belt effectively clear the rotor chamber. Adjust the belt speed to match material type and production rate, while the built in “boost” feature provides a temporary surge in belt speed to move material quickly. The belt also reverses for faster clean-up, while magnetic vinyl covers provide quick access to inspect the rollers for wear.

# BETTER TRACTION FOR OPTIMAL MANEUVERABILITY AND CONTROL

Wheel or track undercarriage options offer a balance of traction, speed and maneuverability. The articulating right rear leg maximizes stability and traction in demanding cuts while enhancing flush cutting capability when needed. For specific applications, an optional ballast weight kit is available to increase productivity.

---

## ENHANCED MOBILITY

Four steering modes with advanced alignment and tracking provide steering precision. A wheeled undercarriage offers enhanced travel speed on the jobsite, and features four 660 mm (25.9 in) diameter and 260 mm (10.2 in) wide solid rubber tires.

---

## TRACKS INSPIRED FROM A LEGACY

The optional track undercarriage system leverages proven designs from Cat 307 and 308 mini excavators. A well-engineered track geometry provides high tractive effort and better load distribution when milling deep cuts or through hard materials.

---

## ADVANCED PROPEL SYSTEM

A robust propel system with Automatic Traction Control drives the tracks in a cross-drive pattern to maintain consistent traction for almost any application. To help optimize production, the automatic load sensing on the rotor adjusts milling speed to prevent stalls and keep you moving forward.

---

## INCREASE VERSATILITY

The articulating right rear leg allows you to choose the position based on application. When maximum stability is needed for extra traction in demanding cuts, it can be positioned outboard of the cutting chamber. Position the leg inboard in front of the rotor chamber for enhanced flush cutting capability and to extend the sliding operator station for improved visibility.



# DURABLE AND DEPENDABLE CUTTING SYSTEM

---

The robust cutting system is designed to withstand the toughest applications and built to last with heavy steel construction and reinforced alloys to resist abrasion.

## DURABILITY DESIGNED IN

The rotor drive system features a heavy-duty dry clutch, dual stage belt drive and automatic belt-tensioning to prevent slippage. A reinforced cutting chamber enhances durability to areas exposed to high abrasion.



---

## REDUCED WEAR AND MAINTENANCE

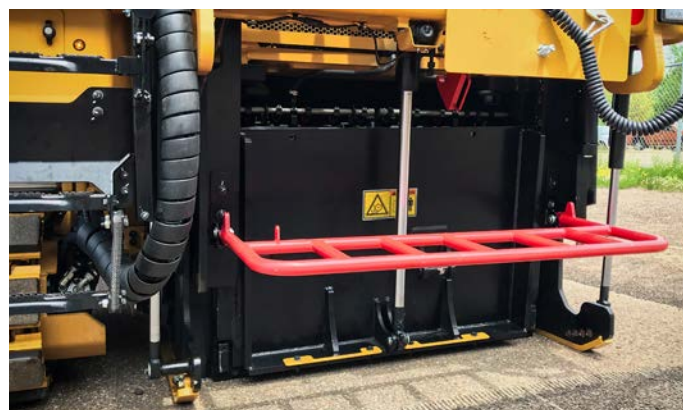
Hardened steel bolt-on wear skis run the full length of side plates and a reversible wear shoe on the anti-slab assembly reduces wear and maintenance. System K rotors are engineered to withstand the toughest applications and reversible paddles and high strength alloys prolong component life.

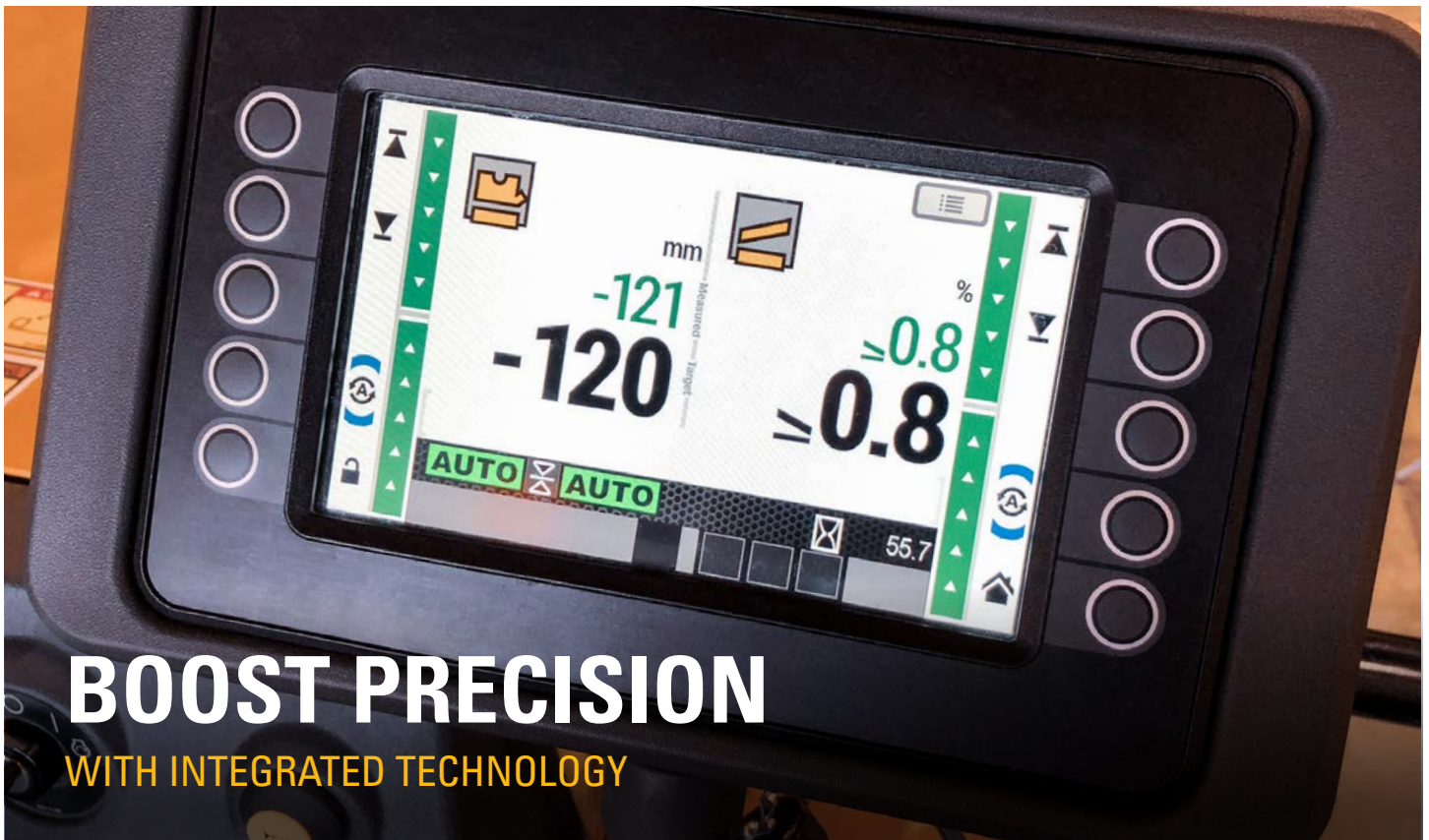


---

## PRECISE CONTROL

Hydraulically controlled moldboards and side plates give you the adjustability you need, while the side plates utilize position-sensing cylinders to act as an averaging ski for grade control. The moldboard applies adjustable downpressure to keep material contained and minimize sweeping. Visible indicators from the ground and operator station make it easy to know where the rotor is at various depths.





# BOOST PRECISION

WITH INTEGRATED TECHNOLOGY

## IMPROVE ACCURACY WITH AUTOMATED FEATURES

Take the guesswork out of producing accurate and repeatable cutting results by using automated features within the integrated Cat GRADE with Grade and Slope system. The optional grade control box allows easy access to elevation and slope settings and can be positioned in the operator station or on the back of the machine to enable interaction with the grade system from the ground level. Need to switch sensors? Seamlessly swap between multiple grade or slope sensors for uninterrupted accuracy and a smooth result for any project.



### PLUNGE-CUT CAPABILITY

Adjust the speed at which the rotor drops into the cut for optimal machine control. Save your settings to reduce set up time for the next job.



### OBSTACLE JUMP

Easily clear obstacles in the cutting path using the obstacle jump feature.



### AUTOMATED CUT TRANSITION

Set and automate grade and slope transitions for tapered start or end cuts over a specified distance, eliminating the need for complicated calculations. Inputs can be saved and recalled for future projects.

### 3D 3D MILLING CAPABLE

Cat cold planers can be enhanced with full 3D milling operation to meet job specifications (additional hardware required).

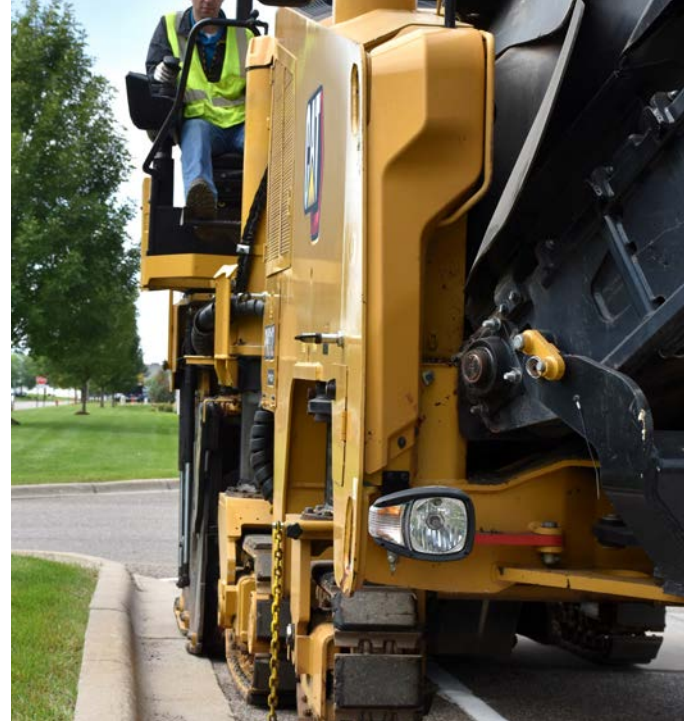
## COMFORTABLE WORK ENVIRONMENT

# DESIGNED FOR THE OPERATOR

## INCREASED VISIBILITY AND COMFORT

A sliding operator station extends up to 215 mm (8.5 in) to provide improved visibility to the cutting edge. The operator station comes standard with a suspension seat that can be positioned for maximum comfort or moved backwards for additional space when standing.

The optional power canopy has an integrated side extension on the right side and is easy to deploy, offering additional protection from the elements. Additional windscreen panels can be installed for increased operator comfort.



## SIMPLE CONTROLS

When operating your cold planer, you need quick access to the necessary controls to get the job done. Whether up in the operator station or on the ground, we have designed the controls to be intuitive and easy to use so you can be productive throughout the entire work day.



## CLEANER WORK ENVIRONMENT

Cat cold planers are designed with optional dust ventilation and spray bar systems to maximize dust removal from the working area, keeping the air cleaner for the crew and surrounding environment.

### FLUSH CUT ASSISTANCE

Cut closer to obstacles on the right side using an optional remote camera above the cutter box with an adjustable on-screen guidance line, viewable on the touchscreen display on the main operator console.





## WORK AREA LIGHTING

Easy to use operator station and ground controls are backlit for low-light environments and work areas are well lit to keep you working day or night.



## REMOTE CAMERAS

Visibility to the cutting edges, conveyor and rear of the machine can be enhanced with optional remote cameras viewable through the main touchscreen display at the operator station.



## INTEGRATED TECHNOLOGY

An optional grade control box can be positioned in the operator station or on the back of the machine to enable interaction with the grade system on an intuitive, touchscreen display.



## ERGONOMIC RIGHT SIDE CONSOLE

The right-side adjustable arm rest can raise, lower or slide forward and back to accommodate the operator, whether seated or standing. Additional controls have been added to the arm rest to increase operator efficiency and ergonomics.



## CAT SYSTEM K ROTORS

# OPTIMIZE CUTTING CAPABILITY

Cat System K rotors are built specifically for Cat cold planers to cover a wide range of milling applications, with efficient material flow and an excellent cutting pattern. Designed to simplify maintenance and extend rotor life, System K rotors are available in multiple bit spacings to match your application needs.

### ALL-NEW TOOLHOLDER DESIGN

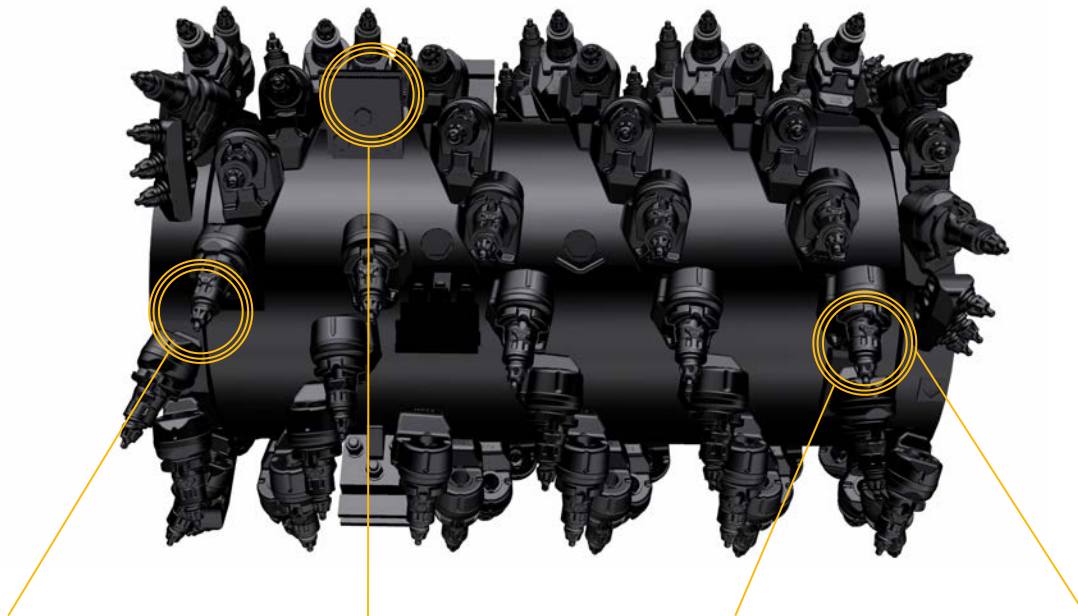
A tapered dual-retention design secures the toolholders to the rotor without retaining pins, bolts or setscrews, speeding up replacement and eliminating the need for fasteners or torquing.

### EASY BIT REMOVAL

System K rotors were designed to make changing cutter bits easier and faster. Bits can be removed using multiple methods, depending on what is easiest for you.

### ROTORS FOR MULTIPLE APPLICATIONS

Constructed with high-strength alloys and designed to withstand the toughest of applications, System K rotors are available with numerous bit spacings to meet job requirements.

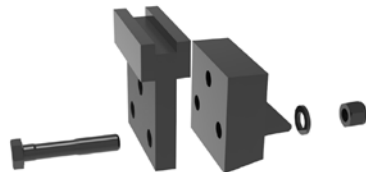


**EASY BIT REMOVAL**

**REVERSIBLE KICKER PADDLES**

**TAPERED DUAL-RETENTION DESIGN**

**HIGHLY FEATURED TOOLHOLDER**





**CAT DIAMOND BITS**  
**REDUCE PROJECT COSTS**

For bituminous applications without obstacles such as interstates or motorways, consider Cat Diamond bits designed specifically for System K rotors. Diamond bits stay sharp up to 80 times longer than conventional carbide teeth, keeping your machine focused more on milling and less on bit changes.

**WHY CHOOSE DIAMOND BITS**

Tips remain sharper over the lifetime of the bit to provide:

- + Increased productivity
- + Consistent cutting pattern
- + Reduced labor for bit service
- + Up to 15% fuel savings

**DIAMOND BITS**  
**STAY SHARPER LONGER**

TYPICAL 35 g  
 CARBIDE  
 BITS



DIAMOND  
 ASPHALT  
 BITS



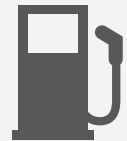
UP TO  
**40x**  
 LONGER

DIAMOND  
 EXTENDED LIFE  
 BITS



UP TO  
**80x**  
 LONGER

**SAVES**  
**UP TO 15%**  
 IN FUEL COSTS



Average life and exact tonnage is impacted by local aggregate and operating technique. Diamond Asphalt Bits last up to 40x the life and Diamond Extended Life Bits last up to 80x the life of typical 35 g carbide bits.

Regular service and maintenance is key to keeping your machines functioning at optimum levels. The PM310, PM312 and PM313 were designed with long maintenance intervals, large service doors, and easy access to critical components and systems. Track components are maintenance-free with easy to replace track pads. When time to replace high wear components, your Cat dealer is ready to help with service, repair kits and convenient parts availability.

# SERVICEABILITY

DESIGNED RIGHT IN



## TIME SAVERS

Features that make service quick and easy.

---

Ground-level controls and an optional hydraulically-operated rotor turning device simplify bit removal and replacement.

---

High and low pressure washdown options connect to the onboard water tank for convenient clean-up.

---

During maintenance and service, the accessory drive system allows for convenient operation of select machine functions without needing to start the engine.

# CAT LINK TECHNOLOGY

## TAKES THE GUESSWORK OUT OF MANAGING YOUR EQUIPMENT

---

**CAT LINK** telematics helps take the complexity out of managing your equipment and job sites by gathering data generated from your machines, materials, and people – delivering it to you in customizable formats.

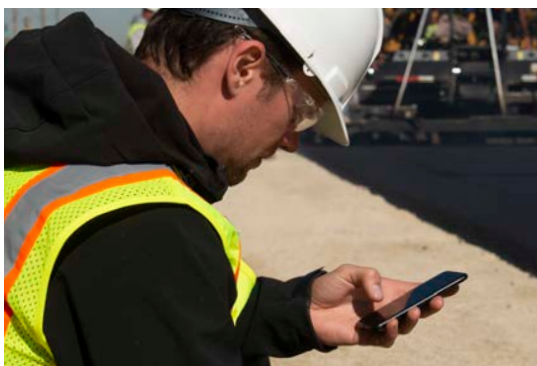


### **CAT PRODUCT LINK™**

Product Link™ collects data automatically from your assets – any type and any brand. Information such as location, hours, fuel usage, productivity, idle time, maintenance alerts, diagnostic codes, and machine health can be viewed online through web and mobile applications.

### **VISIONLINK®**

Access product data anytime, anywhere with VisionLink® and use it to make informed decisions that boost productivity, lower costs, simplify maintenance, and improve safety and security on your job site. With different subscription level options, your Cat dealer can help you configure exactly what you need to connect your fleet and manage your business, without paying for extras you don't want. Subscriptions are available for cellular and/or satellite-based reporting.



## REMOTE SERVICES

**Remote Troubleshoot** allows your Cat dealer to perform diagnostic testing on your connected machine remotely, pinpointing potential issues while the machine is in operation. Remote Troubleshoot ensures the technician arrives with the correct parts and tools the first time, eliminating the need for additional trips, saving you time and money.

**Remote Flash** updates on-board software without a technician being present, reducing time taken for updating by as much as 50%. Minimize downtime by initiating updates when convenient to keep your assets running with maximum efficiency.

The **Cat App** helps you manage your assets right from your smart phone. Track information such as fleet location or hours, receive critical alerts for required maintenance, and request service from your local Cat dealer.

# TECHNICAL SPECIFICATIONS

ENGINE	
Engine Model	Cat C9.3
Gross Engine Power – SAE J1995	
U.S. EPA Tier 4 Final, EU Stage V, Korea Tier 4 Final	251 kW 336.6 hp
Brazil MAR-1, equivalent to U.S. EPA Tier 3 and EU Stage IIIA	246 kW 330 hp
Operating Speed	33 m/min 108 ft/min
Maximum Travel Speed – Track	5.5 km/h 3.4 mph
Maximum Travel Speed – Wheel	7.5 km/h 4.7 mph

CUTTING SYSTEM	
PM310 Milling Width	1000 mm 39.4 in
PM310 Number of Bits (15 mm spacing)	91
PM312 Milling Width	1225 mm 48.2 in
PM312 Number of Bits (15 mm spacing)	106
PM313 Milling Width	1300 mm 51.2 in
PM313 Number of Bits (15 mm spacing)	111
Maximum Cutting Depth	330 mm 13.0 in
Rotor Speeds	97 / 109 / 121 rpm
Minimum Left Cutting Radius – Track	4.14 m 13.58 ft
Minimum Left Cutting Radius – Wheel	4.23 m 13.88 ft
Minimum Right Cutting Radius – Track	1.92 m 6.30 ft
Minimum Right Cutting Radius – Wheel	2.00 m 6.56 ft

MACHINE WEIGHT	
PM310 Operating Weight – Track	21 780 kg 48,016 lb
PM310 Operating Weight – Wheel	21 080 kg 46,473 lb
PM310 Transport Weight – Track	20 168 kg 44,463 lb
PM310 Transport Weight – Wheel	19 468 kg 42,920 lb
PM312 Operating Weight – Track	21 967 kg 48,429 lb
PM312 Operating Weight – Wheel	21 267 kg 46,886 lb
PM312 Transport Weight – Track	20 355 kg 44,875 lb
PM312 Transport Weight – Wheel	19 655 kg 43,332 lb
PM313 Operating Weight – Track	22 071 kg 48,658 lb
PM313 Operating Weight – Wheel	21 371 kg 47,115 lb
PM313 Transport Weight – Track	20 460 kg 45,107 lb
PM313 Transport Weight – Wheel	19 759 kg 43,561 lb

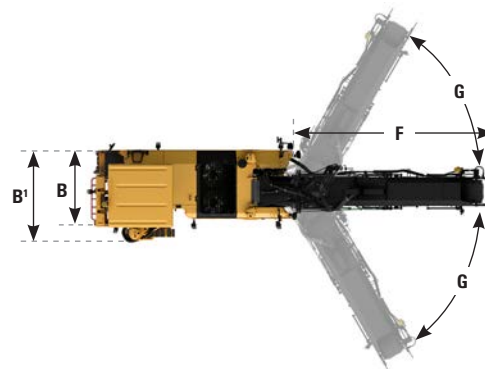
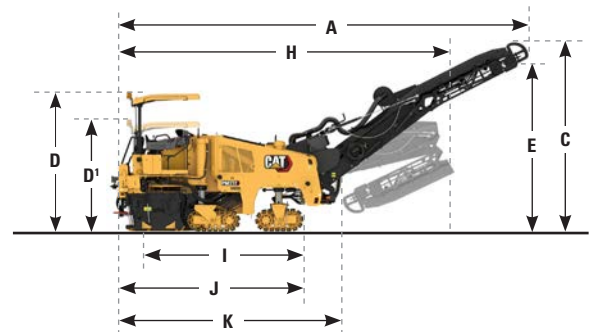
Weights shown are approximate and include:

- Operating weights include coolants, lubricants, full fuel tank, full water tank and 75 kg (165 lb) operator.
- Transport weights include coolants, lubricants, 50% full fuel tank and empty water tank.

SERVICE REFILL CAPACITIES	
Fuel Tank	600 L 158.5 gal
Diesel Exhaust Fluid (DEF) Tank	22 L 5.8 gal
Cooling System	62 L 16.4 gal
Engine Oil	30 L 7.9 gal
Hydraulic Oil	59 L 15.6 gal
Water Tank	1260 L 332.9 gal

DIMENSIONS	
<b>A</b> Overall Length (conveyor raised)	11.11 m 36.45 ft
<b>B</b> Machine Width (leg in)	2.18 m 7.15 ft
<b>B'</b> Machine Width (leg out)	2.54 m 8.33 ft
<b>C</b> Maximum Height (conveyor raised)	5.15 m 16.90 ft
<b>D</b> Height to Optional Canopy	3.75 m 12.30 ft
<b>E</b> Maximum Truck Clearance	4.70 m 15.42 ft
<b>F</b> Conveyor Length	7.08 m 23.23 ft
<b>G</b> Conveyor Swing	±60° from center

SHIPPING DIMENSIONS	
<b>H</b> Transport Length	9.32 m 30.58 ft
<b>B'</b> Transport Width (leg out)	2.54 m 8.33 ft
<b>D'</b> Transport Height (canopy lowered)	3.00 m 9.84 ft
<b>I</b> Length (track to track)	4.26 m 13.98 ft
<b>J</b> Length of Machine (rear to front track)	5.04 m 16.54 ft
<b>K</b> Length of Base Machine	5.90 m 19.36 ft



# STANDARD & OPTIONAL EQUIPMENT

Standard and optional equipment may vary. Consult your Cat dealer for details.

OPERATOR ENVIRONMENT	STANDARD	OPTIONAL
Sliding operator station	●	
Suspension seat	●	
Ground control keypad	●	
Single high-resolution LCD touchscreen display	●	
12-volt power receptacle	●	
Additional high-resolution LCD touchscreen display		○
Powered canopy		○
Windscreens		○
Remote camera with cut edge guidance		○

CAT CONNECT TECHNOLOGY	STANDARD	OPTIONAL
Remote Troubleshoot capability	●	
Cat Product Link	●	
Cat GRADE	●	
Sonic Sensor (averaging or string line)		○
Ground level grade controls and displays		○

CONVEYOR	STANDARD	OPTIONAL
Material removal boost feature	●	
Dust abatement system		○
Hydraulic folding conveyor		○
Remote camera (loading conveyor)		○

ROTOR SYSTEM	STANDARD	OPTIONAL
Automatic plunge-cut	●	
Automatic transition feature	●	
Obstacle jump	●	
Three cutting speeds	●	
System K Rotor - Standard (15 mm)	●	
System K Rotor - Coarse (18 mm)		○
System K Rotor - Fine (8 mm)		○
Diamond bits		○
Pneumatic bit removal tool		○
Tool holder extractor		○
Rotor turning device		○
Ballast kit		○

POWERTRAIN	STANDARD	OPTIONAL
Auto engine idle control	●	
High capacity cooling system	●	
Automatic load control	●	
Wheel undercarriage	●	
Track undercarriage		○
CE certificate		○

HYDRAULIC SYSTEM	STANDARD	OPTIONAL
Traction control	●	

SERVICE AND MAINTENANCE	STANDARD	OPTIONAL
Sampling ports for Scheduled Oil Sampling (S-O-S)	●	
Platform-level engine oil dipsticks	●	
1260 L (333 gal) onboard water tank	●	
Side water fill valve	●	
Water spray system	●	
Air compressor		○
Accessory drive system		○
High pressure washdown		○
Low pressure washdown		○
Additional water spray system		○
Remote Flash		○

SAFETY AND SECURITY	STANDARD	OPTIONAL
Platform handrails	●	
Signaling/warning horn	●	
Halogen work lighting	●	
LED work lighting (fixed, pole mounted, magnetic)		○
Warning beacon (fixed)		○
Roading lights		○
Truck signal lights		○
Remote cameras (rear, front, cutting edges)		○

For more complete information on Cat products, dealer services and industry solutions, visit us on the web at [www.cat.com](http://www.cat.com)

© 2020 Caterpillar. All Rights Reserved.

VisionLink is a trademark of Trimble Navigation Limited, registered in the United States and in other countries.

Materials and specifications are subject to change without notice. Featured machines in photos may include additional equipment. See your Cat dealer for available options.

© 2020 Caterpillar. All Rights Reserved. CAT, CATERPILLAR, LET'S DO THE WORK, their respective logos, "Caterpillar Corporate Yellow", the "Power Edge" and Cat "Modern Hex" trade dress as well as corporate and product identity used herein, are trademarks of Caterpillar and may not be used without permission.  
[www.cat.com](http://www.cat.com) [www.caterpillar.com](http://www.caterpillar.com)



Q.EHQ2689 (6/20)  
Build Number: 02B  
Global

