

D6 GC

TRACK-TYPE TRACTOR



Engine Model	Cat 3306B DIT
Nominal Net Power ISO 9249/SAE J1349	2,000 rpm 158 kW (212 hp)
Operating Weight	
D6 GC (SU Blade)	21 825 kg (48,116 lb)
D6 GC (Angle Blade)	21 630 kg (47,686 lb)



The Cat® D6 GC gives you performance and reliability in a simple, economical dozer. Designed to take on a variety of tough tasks, this bulldozer is easy to operate and delivers the straightforward service and maintenance you need.

THE NEW CAT® D6 GC

SIMPLE. RELIABLE. ROBUST.



HARD WORKING

The new D6 GC is designed for your business needs. The D6 GC has the horsepower, weight and blade capacity you need to take on demanding work.

- + ROBUST FOR A WIDE VARIETY OF APPLICATIONS
- + FULLY MECHANICAL FOR STRAIGHTFORWARD DIAGNOSTICS AND REPAIR
- + AVAILABLE FORESTRY CONFIGURATION FOR YOUR TOUGHEST TASKS



SIMPLE

Fully mechanical tractor offers a comfortable cab with easy-to-operate controls. Diagnostics, maintenance and repairs are easy, even in remote areas. D6 GC delivers solid all-around performance for a variety of applications.

UP TO 10% MORE PRODUCTIVITY*

The D6 GC has the horsepower, weight and blade capacity to take on demanding work. It's Caterpillar designed and built using proven components, like a Cat 3306B mechanical engine, robust structures and a durable high drive undercarriage.

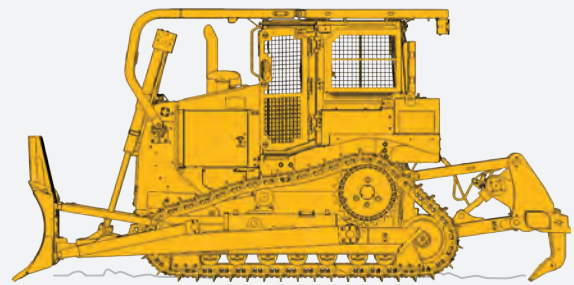
ECONOMICAL

The D6 GC is cost-effective to own and operate. It provides competitive performance and fuel efficiency, along with easy service and maintenance using widely available parts.

* Comparisons to former D7G/D7G2



» ALL MECHANICAL «



SIMPLE EASY TO OPERATE.
EASY TO SERVICE.
EASY TO REPAIR.





PROVEN PERFORMER

Feel the power of the well-known Cat 3306B engine. The mechanical engine is robust and easy to service. The fuel system is less sensitive to varied diesel fuel conditions.



LONG-TERM POWER

Cat 3-speed planetary powershift transmission and Caterpillar exclusive torque divider help you harness more power to the ground.



HIGHER STANDARD

The elevated sprocket undercarriage provides better ride balance, improved blade penetration and a lower machine center of gravity. Long length of track on the ground adds to machine stability and performance.



EQUIPPED FOR THE JOB

Semi-Universal (SU) blade provides more capacity than the former D7G for more productivity. Or choose a reinforced mechanical tilt Angle Blade to suit the work you do. Rear attachment choices include ripper, winch or rigid drawbar.



POWERFUL PERFORMANCE
IN A FAMILIAR PACKAGE

DESIGNED TO BE EASY TO OPERATE

WORK SPACE

Choose cab or canopy dozer with Integrated Roll-Over Protective Structure (ROPS/FOPS) for comfort, excellent visibility and added safety. Suspension seat and available cab air conditioning add to operator comfort.

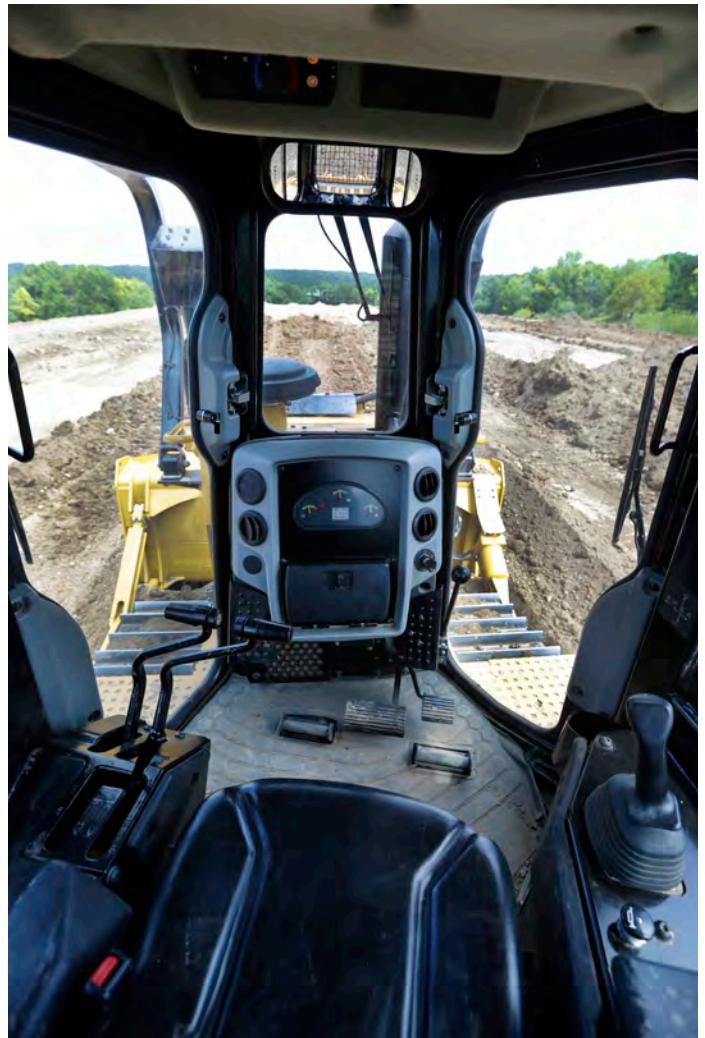
TAKE CONTROL

Familiar controls suit operators of varied experience levels.

- + 2-lever clutch and brake steering controls
- + Forward and reverse speed selector
- + Traditional blade controls
- + Ripper or winch control lever in easy reach (when equipped)

STAY INFORMED

Easy-to-read dash display helps you keep track of machine functions, fuel levels and more with analog gauges and warning/status lamps.



MAINTENANCE MADE EASY

WHEN UPTIME COUNTS

Everything about the D6 GC, like its mechanical systems, robust structures, access to components and widely available parts, is designed to help make it easy to own.



FULLY MECHANICAL

The engine and transmission are fully mechanical. These familiar systems make diagnostics and repairs easier when your work takes you to remote locations.

ELEVATED EASE

The elevated sprocket undercarriage helps make maintenance easier with modular components that are easy to remove/install for service. Segmented sprockets are easy to replace.

KEEPING COOL

Efficient aluminum bar plate cooling package delivers excellent ambient capability. Durable system is highly abrasion resistant and designed to minimize plugging.

COLD WEATHER COMPATIBLE

Outfit your dozer with features like heavy-duty batteries, a solid engine hood and an engine coolant heater connection to aid frigid weather starting. Manually adjustable reversible fan varies air flow through the radiator in extreme cold climates.

GET BACK TO WORK

Features designed so you spend less time on maintenance and more time getting the job done.

- Wide access doors, grouped service points and modular component design save you routine maintenance time.
- Daily power train oil check and sampling ports easily accessed from machine platform for convenience and added safety.
- Save time with a minimal number of easy-to-access service grease points.
- Safe, easy access to windshield washer fluid bottle, rear service points, fuel fill and rear service points.
- New, wider floor plates give you quick access to the transmission if needed.
- Lockable shovel holder option keeps a shovel handy for quick undercarriage cleanouts.
- Optional bio-diesel compatible fuel system.

UP TO THE TASK

DURABILITY AND LONG LIFE

MORE ROBUST

Heavy structures make for a machine that can stand up to challenging conditions. Heavier blade structures handle the added weight and horsepower.

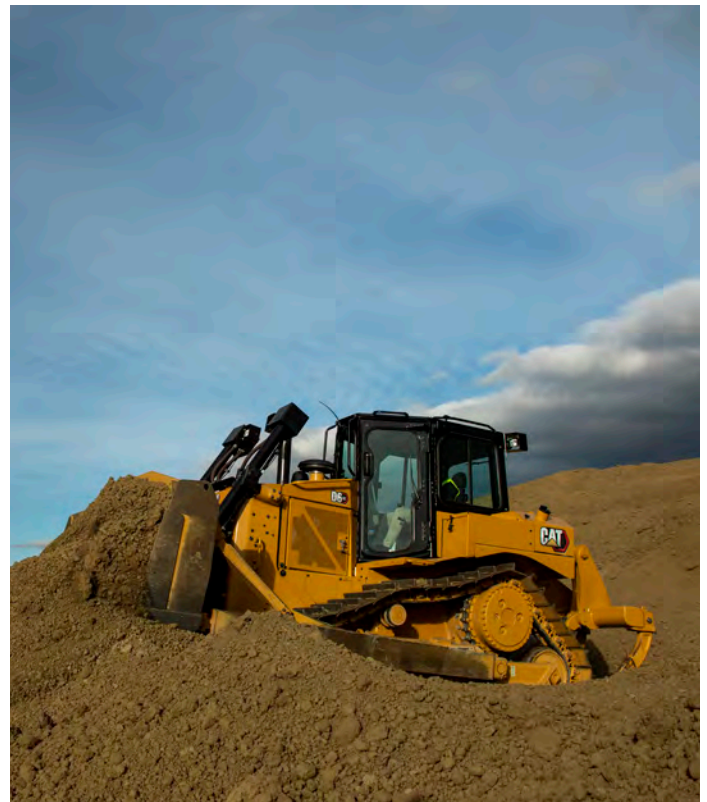
LONGER LIFE

Throughout the D6 GC, you will find structures designed for long life in tough applications.

- + Thicker plates in the dozer case and frame
- + Stronger blade structures and reinforced L-shaped push-arm
- + Adjustment-free steering clutches
- + Elevated sprocket
- + Optimized undercarriage with strong structures for stability and durability
- + Two-piece track roller frame with maintenance-free recoil system
- + Sealed and Lubricated Track to prevent internal wear and maximize bushing life
- + Heavy-duty guarding options for cab and major machine components

PROVEN COMPONENTS

From the well-known Cat 3306B engine to the powershift transmission and single-reduction planetary final drives, Caterpillar designed power train components work as a system for reliability and performance.



FACTORY EQUIPPED FOR THE TOUGHEST TASKS

Forestry arrangement is available with optional protection like sweeps, screens and added guarding to help protect both the operator and the machine in harsh conditions.



DEBRIS DEFLECTION

Cab and canopy machines can be ordered with sweeps to help protect against falling debris. Front, side, rear and/or door screens are available to surround the operator station.

GUARD AGAINST IMPACT

Extra guarding to protect the fuel and hydraulic tanks, transmission and air pre-cleaner. Heavy-duty bottom guards are standard. Added sealing helps keep debris out of the engine compartment.

READY TO WORK

SU and Angle blades are available with brush rack for more carrying capacity and to help protect the machine from debris. Outfit your machine with a winch for towing capability.

MORE THAN MACHINES

BUILT AROUND YOUR SUCCESS

Cat dealer support helps you make the most of your equipment investment.

TOP DEALER SUPPORT

When you buy Cat equipment, you're getting so much more than the machine. You're also getting the support of a best-in-class dealer network, backed by a range of flexible solutions, technology, tools and more. It's Customer Value Agreements (CVA) and financing solutions. It's cost-saving service and repair options. It's quality parts and precision components. It's rental and used equipment options. It's all about support that's built around your success.



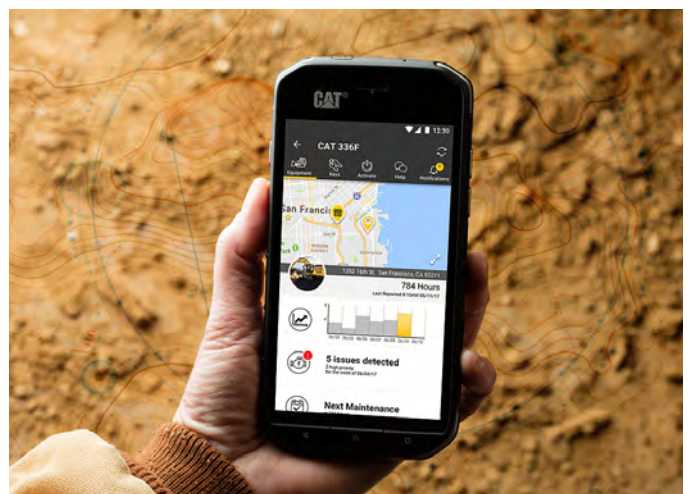
PRODUCT LINK™/VISIONLINK®

You can simplify your maintenance by using Cat Product Link to track machine location and service hours on your D6 GC. View the data using VisionLink or the Cat App.



CAT APP

The Cat App helps you manage your assets – at any time – right from your smartphone. See fleet location and hours, get critical required maintenance alerts, and even request service from your local Cat dealer.



TECHNICAL SPECIFICATIONS

See cat.com for complete specifications.

ENGINE			
Engine Model	Cat 3306B DIT		
Build Number	01A		
Emissions	Noncertified		
Net Power – 2,200 rpm			
ISO 9249 / SAE J1349	158 kW	212 hp	
ISO 9249 / SAE J1349 (DIN)	215 hp		
80/1269/EEC	158 kW	212 hp	
Fuel Tank	424 L	112 gal	

• Net power advertised is the power available at the flywheel when engine is equipped with a fan at maximum speed, air cleaner, muffler, alternator.

OPERATING WEIGHT			
D6 GC (SU Blade)	21 825 kg	48,116 lb	
D6 GC (Angle Blade)	21 630 kg	47,686 lb	
Shipping Weight	18 615 kg	41,039 lb	
D6 GC (Forestry)	22 710 kg	50, 067 lb	
Shipping Weight	19 260 kg	42,461 lb	

BLADES				
	Capacity		Width	
	Semi-Universal (SU)	6.1 m ³	8.0 yd ³	3260 mm
Angle	4.0 m ³	5.2 yd ³	4166 mm	164.0 in

• Blade capacities are measured to SAE J1265

DIMENSIONS			
Track Gauge	1880 mm	74 in	
Width of Standard Shoe	560 mm	22 in	
Width of Tractor over Trunnions	2640 mm	104 in	
Machine Height to ROPS (Cab or Canopy)	3216 mm	127 in	
Machine Height to Sweeps	3296 mm	130 in	
Length of Track on Ground	2964 mm	117 in	
Length of Basic Tractor	3953 mm	156 in	
With the following attachments, add to basic tractor length			
SU Blade	1410 mm	55.5 in	
Angle Blade (straight)	1334 mm	52.5 in	
Angle Blade (angled 25 deg)	2170 mm	85.4 in	
Drawbar	262 mm	10.3 in	
Ripper	1299 mm	51.1 in	
Ground Contact Area – 560 mm shoes	3.3 m ²	5,146 in ²	
Ground Pressure* – SU Blade	64.4 kPa	9.3 psi	
Ground Pressure* – Angle Blade	63.9 kPa	9.3 psi	
Ground Contact Area – 610 mm shoes	3.6 m ²	5,605 in ²	
Ground Pressure* – SU Blade	59.1 kPa	8.6 psi	
Ground Pressure* – Angle Blade	58.6 kPa	8.5 psi	

*ISO 16754

STANDARD & OPTIONAL EQUIPMENT

Standard and optional equipment may vary. Consult your Cat dealer for details.

POWERTRAIN	STANDARD	OPTIONAL
Cat 3306B engine	•	
Elevated sprocket final drives	•	
Clutch and brake steering with 2-lever steering control	•	
Cat 3-speed planetary powershift transmission	•	
Radiator fan	•	
Manually reversible radiator fan for cold weather climates		•
OPERATOR ENVIRONMENT	STANDARD	OPTIONAL
Enclosed cab with Integrated Roll Over Protective Structure (ROPS/FOPS)	•	
Open canopy with Integrated Roll Over Protective Structure (ROPS/FOPS)		•
Vinyl seat with retractable seatbelt		•
Cloth seat with retractable seatbelt		•
Air conditioning		•
Lights – 4	•	
Lights – 6		•
CAT TECHNOLOGIES	STANDARD	OPTIONAL
Product Link, Cellular PLE641	•	
Product Link, Satellite PLE631		•
BLADES	STANDARD	OPTIONAL
Semi-Universal		•
Semi-Universal, land clearing		•
Angle blade		•
Angle blade, land clearing		•

UNDERCARRIAGE	STANDARD	OPTIONAL
Undercarriage with carrier roller and with general duty track rollers (7) and idlers	•	
Undercarriage with carrier roller, center guiding guard, and with general duty track rollers (7) and idlers		•
Heavy Duty Sealed and Lubricated Track link	•	
560 mm (22 in) Moderate Service track shoes	•	
560 mm (22 in) Extreme Service track shoes		•
610 mm (24 in) Moderate Service track shoes		•
SERVICE AND MAINTENANCE	STANDARD	OPTIONAL
Ecology drains	•	
Modular major components	•	
Shovel holder	•	
Wide access doors and grouped service points	•	
ATTACHMENTS	STANDARD	OPTIONAL
Multi-shank ripper with straight or curved shanks		•
Rigid drawbar		•
Winch (field installed)		•
Sweeps		•
Side, rear, and/or door screens for cab or canopy		•
Forestry/Land Clearing configuration		•
Cold Weather package		•

Not all features are available in all regions. Please check with your local Cat dealer for specific offering availability in your area.
For additional information, refer to the Technical Specifications brochures for the D6 GC available at www.cat.com or your Cat dealer.

For more complete information on Cat products, dealer services, and industry solutions, visit us on the web at www.cat.com.

VisionLink is a trademark of Trimble Navigation Limited, registered in the United States and in other countries.

Materials and specifications are subject to change without notice. Featured machines in photos may include additional equipment. See your Cat dealer for available options.

©2020 Caterpillar. All Rights Reserved. CAT, CATERPILLAR, LET'S DO THE WORK, their respective logos, Product Link, "Caterpillar Corporate Yellow", the "Power Edge" and Cat "Modern Hex" trade dress as well as corporate and product identity used herein, are trademarks of Caterpillar and may not be used without permission.

www.cat.com www.caterpillar.com

AEXQ2933-00
Build Number: 01A
(AME, APD excluding
Japan/Korea, CIS)

