



D6 GC

Track-Type Tractor

Technical Specifications

Configurations and features may vary by region. Please consult your Cat® dealer for availability in your area.

Table of Contents

D6 GC Track-Type Tractor

Specifications	2	Undercarriage	3
Engine	2	D6 GC	4
Service Refill Capacities	2	Blades	4
Hydraulic Controls	2	Rippers	5
Transmission	2	Standards	5
Drawbar	3	Standard and Optional Equipment	6

D6 GC Forestry Track-Type Tractor Specialty Configuration

Key Features and Benefits	8	Undercarriage	10
Specifications	9	D6 GC Forestry	11
Engine	9	Blades	11
Service Refill Capacities	9	Rippers	12
Hydraulic Controls	9	Standards	12
Transmission	9	Standard and Optional Equipment	13
Drawbar	10		

D6 GC Track-Type Tractor Specifications

Engine

Engine Model	Cat® 3306B DIT	
Emissions	Noncertified	
Build Number	01A	
Net Power (rated)		
ISO 9249/SAE J1349	158 kW	212 hp
ISO 9249/SAE J1349 (DIN)	215 hp	
80/1269/EEC	158 kW	212 hp
Rated Engine Speed	2,000 rpm	
Engine Power (maximum)		
SAE J1995	176 kW	237 hp
ISO 14396	174 kW	233 hp
ISO 14396 (DIN)	236 hp	
Engine Speed	1,850 rpm	
Engine Peak Torque – 1,500 rpm	998 N·m	736 lbf·ft
Bore	120.6 mm	4.7 in
Stroke	152.4 mm	6.0 in
Displacement	10.5 L	641 in ³

- Net power advertised is the power available at the flywheel when engine is equipped with a fan at maximum speed, air cleaner, muffler, alternator.
- No deratings required up to 2250 m (7,382 ft) altitude.

Service Refill Capacities

Fuel Tank	424 L	112.0 gal
Cooling System	27 L	7.1 gal
Engine Crankcase	24 L	6.3 gal
Power Train	146 L	38.6 gal
Final Drives (each)	13.5 L	3.6 gal
Track Roller Frame (each)	85 L	22.5 gal
Pivot Shaft	5 L	1.3 gal
Hydraulic Tank	53 L	14.0 gal

Hydraulic Controls

Pump Type – Implements	Gear	
RPM at Rated Engine Speed – Implement	2,125 rpm	
Pump Output – Implement	202 L/min	53.4 gal/min
Lift Cylinder Flow	202 L/min	53.4 gal/min
Tilt Cylinder Flow	202 L/min	53.4 gal/min
Ripper Cylinder Flow	202 L/min	53.4 gal/min
Maximum Operating Pressures		
Bulldozer Lift Cylinder	19 300 kPa	2,799 psi
Bulldozer Tilt Cylinder	19 300 kPa	2,799 psi
Ripper Lift Cylinder	19 300 kPa	2,799 psi
Main Relief Valve Pressure Setting – Implement	19 300 kPa	2,799 psi

Transmission

1.0 Forward	4.1 km/h	2.5 mph
2.0 Forward	7.1 km/h	4.4 mph
3.0 Forward	12.1 km/h	7.5 mph
1.0 Reverse	5.2 km/h	3.2 mph
2.0 Reverse	9 km/h	5.6 mph
3.0 Reverse	15.4 km/h	9.6 mph

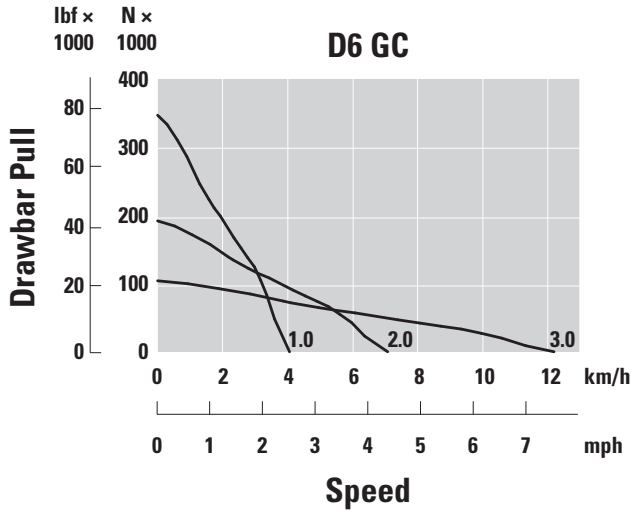
D6 GC Track-Type Tractor Specifications

Drawbar

Drawbar Pull, 1.0 Forward	1.0 km/h	0.6 mph
	278 kN	62,497 lb
Drawbar Pull, 2.0 Forward	3.0 km/h	1.9 mph
	118 kN	26,527 lb
Drawbar Pull, 3.0 Forward	5.0 km/h	3.1 mph
	65 kN	14,613 lb

Undercarriage

Shoe Type	Moderate Service	
Width of Shoe	560 mm	22.0 in
	610 mm	24.0 in
Grouser Height	65 mm	2.6 in
Shoes per Side	42	
Track Rollers per Side	7	
Track Pitch	203 mm	8.0 in
Oscillation at Front Idler	87 mm	3.4 in



D6 GC Track-Type Tractor Specifications

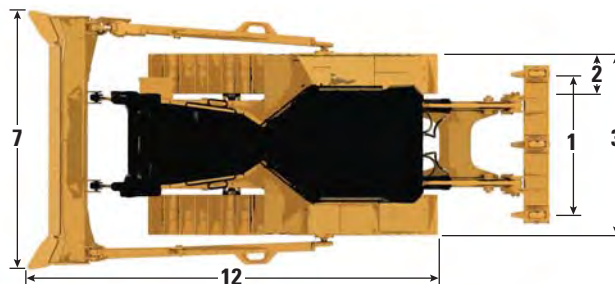
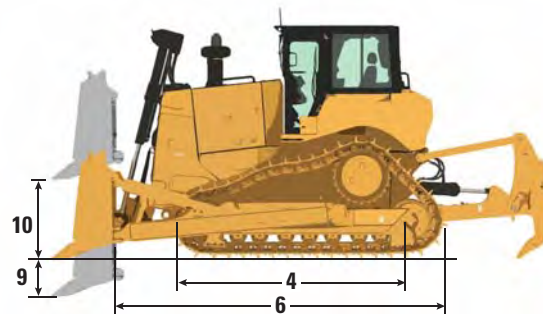
D6 GC

Operating Weight*– SU	21 825 kg	48,116 lb
Operating Weight*– Angle Blade	21 630 kg	47,686 lb
Shipping Weight**	18 615 kg	41,039 lb
Type of Shoe	Moderate Service	
1 Track Gauge	1880 mm	74.0 in
With Standard Track Shoe:		
2 Width of Track Shoe	560 mm	22 in
Ground Contact Area (ISO 16754)	3.3 m ²	5,146 in ²
Ground Pressure*** – SU	64.4 kPa	9.3 psi
With Optional Track Shoe:		
Width of Track Shoe	610 mm	24 in
Ground Contact Area (ISO 16754)	3.6 m ²	5,605 in ²
Ground Pressure*** – SU	59.1 kPa	8.6 psi
Width of Tractor Over Trunnions (standard shoe)	2640 mm	104 in
3 Width of Tractor without Trunnions (standard shoe)	2440 mm	96.1 in
4 Length of Track on Ground	2964 mm	117.0 in
Ground Clearance from Track Shoe Face	372 mm	14.6 in
Machine Height from Tip of Grouser to:		
5 ROPS (Cab or Canopy)	3216 mm	126.6 in
Sweeps	3296 mm	129.8 in
6 Length of Basic Tractor	3953 mm	155.6 in
With the following attachments, add:		
12 SU Blade	1410 mm	55.5 in
A – Blade (straight)	1334 mm	52.5 in
A – Blade (angled 25 degrees)	2170 mm	85.4 in
Rear Drawbar	262 mm	10.3 in
Multi-Shank Ripper	1299 mm	51.1 in

*Operating weight includes lubricants, coolant, full fuel tank, standard track, ROPS Cab, hydraulic controls, blade, drawbar and operator.

**Shipping weight includes lubricants, coolant, 10% fuel tank, standard track, ROPS cab and hydraulic controls.

***Ground pressure with Moderate Service shoe. Operating weight and corresponding ground pressure vary based on actual equipment installed.



Blades

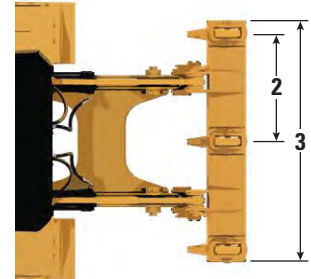
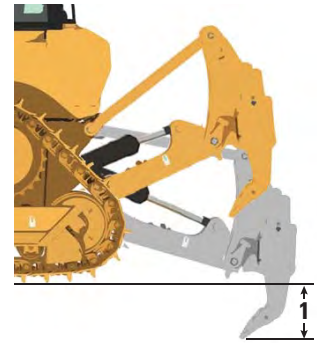
	6SU		6A	
Capacity	6.1 m ³	8.0 yd ³	4.0 m ³	5.2 yd ³
7 Width	3260 mm	128.3 in	4166 mm	164.0 in
8 Height	1522 mm	59.9 in	1155 mm	45.5 in
9 Dig Depth	470 mm	18.5 in	506 mm	19.9 in
10 Ground Clearance	1162 mm	45.7 in	1142 mm	45.0 in
11 Maximum Tilt	743 mm	29.3 in	408 mm	16.1 in
Weight ⁽¹⁾	2947 kg	6,497 lb	2715 kg	5,986 lb

⁽¹⁾ Does not include hydraulic controls but includes push-arm or C-frame, blade tilt brace and tilt cylinder where fitted.

D6 GC Track-Type Tractor Specifications

Rippers

Type	Fixed Parallelogram	
2 Number of pockets	3 – Multiple Shank	
3 Overall Beam Width	2190 mm	86.2 in
Weight with standard shanks	1644 kg	3,624 lb
1 Maximum Penetration	500 mm	19.7 in
Maximum Penetration Force	76 kN	17,085 lbf
Pry-out Force	116.5 kN	26,190 lbf



Standards

ROPS/FOPS	ROPS (Rollover Protective Structure) offered by Caterpillar meets ROPS criteria ISO 3471:2008
	FOPS (Falling Object Protective Structure) meets FOPS criteria ISO 3449:2005
Brakes	Brakes meet the standard SAE J/ISO 10265:2008
Cab	Meets appropriate standards as listed below
<ul style="list-style-type: none"> The operator sound exposure Leq (equivalent sound pressure level) measured according to the work cycle procedures specified in ISO 6396 is 85 dB(A), for a cab by Caterpillar, when properly installed and maintained and tested with the doors and windows closed. Hearing protection may be needed when operating with an open operator station and cab (when not properly maintained for doors/windows open) for extended periods or in noisy environment(s). The exterior sound pressure level for the standard machine measured at a distance of 16 m (52.5 ft) radius according to the test procedure specifics in ISO 6395, mid gear moving operation, is 116 dB(A). 	

D6 GC Standard and Optional Equipment

Standard and Optional Equipment

Standard and optional equipment may vary. Consult your Cat dealer for details.

	Standard	Optional		Standard	Optional
POWER TRAIN			BULLDOZERS		
Cat 3306B Direct Injection Turbocharged (DIT) diesel engine	✓		6 SU installation		✓
Elevated sprocket final drives	✓		6 SU installation with guarded tilt lines		✓
Elevated sprocket final drives (Arctic Weather sealing)		✓	6A installation with mechanical tilt		✓
Clutch and brake steering with 2-lever steering control	✓		UNDERCARRIAGE		
Belt driven radiator fan	✓		Undercarriage with carrier roller and general duty track rollers (7) and idlers	✓	
Manually reversible radiator fan (Cold weather climates)		✓	Undercarriage with carrier roller, center guiding guard, and general duty track rollers (7) and idlers		✓
Fuel lines – up to B30 biodiesel compatible		✓	Heavy Duty Sealed and Lubricated track link	✓	
Heated fuel lines (Cold weather climates)		✓	560 mm (22 in) Moderate Service track shoes	✓	
Ether starting capability – cold weather		✓	560 mm (22 in) Extreme Service track shoes		✓
OPERATOR ENVIRONMENT			610 mm (24 in) Moderate Service track shoes		✓
Open canopy with Integrated Roll Over Protective Structure (ROPS/FOPS)	✓		SERVICE AND MAINTENANCE		
Enclosed cab with Integrated Roll Over Protective Structure (ROPS/FOPS)		✓	Modular major components	✓	
Vinyl seat with retractable seat belt	✓		Wide access doors and grouped service points	✓	
Cloth seat with retractable seat belt		✓	Basic lubricant	✓	
Air conditioning		✓	Ecology drains		✓
Four halogen lights	✓		Lockable shovel holder bracket		✓
Six halogen lights		✓	Arctic lubricant		✓
Additional interior mirror		✓	Antifreeze –50° C (–58° F)		✓
CAT TECHNOLOGY					
Product Link™, Cellular PL641	✓				
Product Link, Satellite PL631		✓			
No Product Link		✓			
BLADES					
Semi-Universal		✓			
Semi-Universal, land clearing		✓			
Angle blade		✓			
Angle blade, land clearing		✓			

(continued on next page)

Not all features are available in all regions. Please check with your local Cat dealer for specific offering availability in your area.

For additional information, refer to the Technical Specifications brochure available at www.cat.com or your Cat dealer.

D6 GC Standard and Optional Equipment

Standard and Optional Equipment *(continued)*

Standard and optional equipment may vary. Consult your Cat dealer for details.

	Standard	Optional		Standard	Optional
ATTACHMENTS			ELECTRICAL		
Multi-shank ripper with straight, or curved, shanks		✓	Standard alternator	✓	
Rigid drawbar		✓	Standard battery	✓	
Winch (field installed)		✓	Heavy duty battery (Cold weather climates)		✓
No rear attachment		✓	Engine coolant heater – 220V (External power source required)		✓
HYDRAULICS					
Lift and tilt hydraulics	✓				
Lift and tilt, ripper hydraulics		✓			
GUARDS					
Basic radiator grill	✓				
Heavy duty radiator grill		✓			
Perforated hood engine enclosure	✓				
Solid hood engine enclosure		✓			
Rear transmission guard		✓			
Heavy duty fuel/hydraulic tank guard with filler cap protection		✓			
Cleaner cap and seal guards		✓			
Sweeps		✓			
Side, rear and/or door screens for cab or canopy		✓			

Not all features are available in all regions. Please check with your local Cat dealer for specific offering availability in your area.

For additional information, refer to the Technical Specifications brochure available at www.cat.com or your Cat dealer.



D6 GC

Forestry Track-Type Tractor

Forestry arrangement is available with optional protection like sweeps, screens and added guarding to help protect both the operator and machine in harsh conditions.

Equipped for the Job

- Cab and canopy machines can be ordered with sweeps. This provides good visibility for the operator, plus forward protection of the machine against falling debris.
- Front, side, rear and/or door screens are available to surround the operator station.
- Forestry machines can be equipped with extra guarding to protect the fuel and hydraulic tanks, transmission and air cleaner cap.
- Heavy duty bottom guards are standard.
- Added sealing helps keep debris out of the engine compartment.
- Semi-Universal and Angle blades are available with an added brush rack to help increase carrying capacity and to help protect the machine from debris coming over the top of the blade.

Reliable Performance

- Designed for your business needs – cost effective to own and operate.
- Horsepower, weight and blade capacity give you the productivity you need to take on demanding work.
- Fully mechanical, equipped with the well-known Cat® 3306B engine.
- Caterpillar designed power train components work as a system for reliability and performance.
- Heavy structures make for a robust machine that can stand up to challenging conditions.
- Caterpillar elevated sprocket undercarriage protects the power train from shock loads.

Hard Working

- Familiar controls and clutch and brake steering platform suit varied operator experience levels.
- Choice of cab or canopy dozer, with Integrated Roll Over Protective Structure (ROPS/FOPS), for comfort, excellent visibility and added safety.
- Experience fast speeds and quick directional changes with a Cat 3-speed planetary power shift transmission.
- Harness more power to the ground with a proven, Caterpillar exclusive torque divider.
- Long length of track on the ground adds to machine stability and performance in a variety of applications.

Maintenance Made Easy

- Maintenance, diagnostics and repairs are easier, even in remote locations, with familiar engine and power train systems.
- Robust fuel system, up to B30 compatible.
- Major components are modular for easy access and fast in-field exchanges.
- Wide access doors and grouped service points save routine maintenance time.
- Lockable shovel holder option gives you a place to keep a shovel handy for quick undercarriage cleanouts.

D6 GC Forestry Track-Type Tractor Specifications

Engine

Engine Model	Cat 3306B DIT	
Emissions	Noncertified	
Build Number	01A	
Net Power (rated)		
ISO 9249/SAE J1349	158 kW	212 hp
ISO 9249/SAE J1349 (DIN)	215 hp	
80/1269/EEC	158 kW	212 hp
Rated Engine Speed	2,000 rpm	
Engine Power (maximum)		
SAE J1995	176 kW	237 hp
ISO 14396	174 kW	233 hp
ISO 14396 (DIN)	236 hp	
Engine Speed	1,850 rpm	
Engine Peak Torque – 1,500 rpm	998 N·m	736 lbf·ft
Bore	120.6 mm	4.7 in
Stroke	152.4 mm	6.0 in
Displacement	10.5 L	641 in ³

- Net power advertised is the power available at the flywheel when engine is equipped with a fan at maximum speed, air cleaner, muffler, alternator.
- No deratings required up to 2250 m (7,382 ft) altitude.

Service Refill Capacities

Fuel Tank	424 L	112.0 gal
Cooling System	27 L	7.1 gal
Engine Crankcase	24 L	6.3 gal
Power Train	146 L	38.6 gal
Final Drives (each)	13.5 L	3.6 gal
Track Roller Frame (each)	85 L	22.5 gal
Pivot Shaft	5 L	1.3 gal
Hydraulic Tank	53 L	14.0 gal

Hydraulic Controls

Pump Type – Implements	Gear	
RPM at Rated Engine Speed – Implement	2,125 rpm	
Pump Output – Implement	202 L/min	53.4 gal/min
Lift Cylinder Flow	202 L/min	53.4 gal/min
Tilt Cylinder Flow	202 L/min	53.4 gal/min
Ripper Cylinder Flow	202 L/min	53.4 gal/min
Maximum Operating Pressures		
Bulldozer Lift Cylinder	19 300 kPa	2,799 psi
Bulldozer Tilt Cylinder	19 300 kPa	2,799 psi
Ripper Lift Cylinder	19 300 kPa	2,799 psi
Main Relief Valve Pressure Setting – Implement	19 300 kPa	2,799 psi

Transmission

1.0 Forward	4.1 km/h	2.5 mph
2.0 Forward	7.1 km/h	4.4 mph
3.0 Forward	12.1 km/h	7.5 mph
1.0 Reverse	5.2 km/h	3.2 mph
2.0 Reverse	9 km/h	5.6 mph
3.0 Reverse	15.4 km/h	9.6 mph

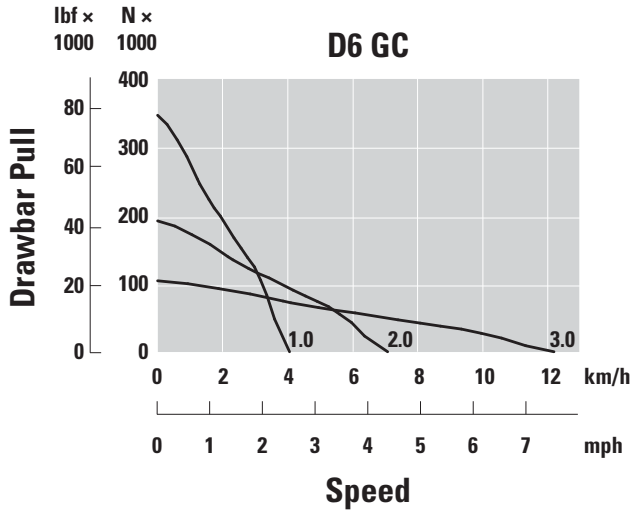
D6 GC Forestry Track-Type Tractor Specifications

Drawbar

Drawbar Pull, 1.0 Forward	1.0 km/h	0.6 mph
	278 kN	62,497 lb
Drawbar Pull, 2.0 Forward	3.0 km/h	1.9 mph
	118 kN	26,527 lb
Drawbar Pull, 3.0 Forward	5.0 km/h	3.1 mph
	65 kN	14,613 lb

Undercarriage

Shoe Type	Moderate Service	
Width of Shoe	560 mm	22.0 in
	610 mm	24.0 in
Grouser Height	65 mm	2.6 in
Shoes per Side	42	
Track Rollers per Side	7	
Track Pitch	203 mm	8.0 in
Oscillation at Front Idler	87 mm	3.4 in



D6 GC Forestry Track-Type Tractor Specifications

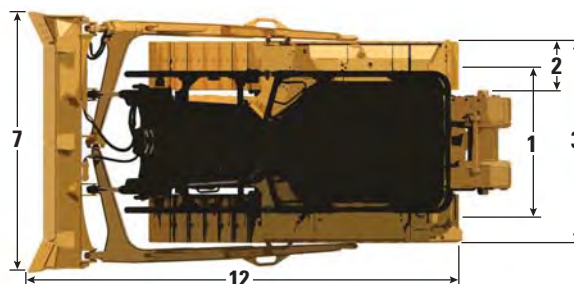
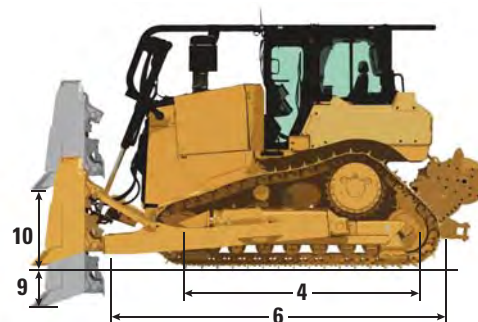
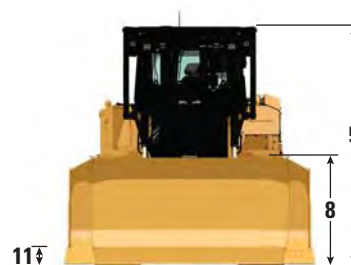
D6 GC Forestry

Operating weight*	22 710 kg	50,067 lb
Shipping weight**	19 260 kg	42,461 lb
Type of Shoe	Moderate Service	
1 Track Gauge	1880 mm	74.0 in
With Standard Track Shoe:		
2 Width of Track Shoe	560 mm	22 in
Ground Contact Area (ISO 16754)	3.3 m ²	5,146 in ²
Ground Pressure***	67 kPa	9.7 psi
With Optional Track Shoe:		
Width of Track Shoe	610 mm	24 in
Ground Contact Area (ISO 16754)	3.6 m ²	5,605 in ²
Ground Pressure***	61.5 kPa	8.9 psi
Width of Tractor Over Trunnions (standard shoe)	2640 mm	104.0 in
3 Width of Tractor without Trunnions (standard shoe)	2440 mm	96.1 in
4 Length of Track on Ground	2964 mm	117.0 in
Ground Clearance from Track Shoe Face	372 mm	14.6 in
Machine Height from Tip of Grouser to:		
ROPS (Cab or Canopy)	3216 mm	126.6 in
5 Sweeps	3296 mm	129.8 in
6 Length of Basic Tractor	3953 mm	155.6 in
With the following attachments, add:		
12 SU Blade	1410 mm	55.5 in
A – Blade (straight)	1334 mm	52.5 in
A – Blade (angled 25 degrees)	2170 mm	85.4 in
Rear Drawbar	262 mm	10.3 in
Multi-Shank Ripper	1299 mm	51.1 in

*Operating weight includes lubricants, coolant, full fuel tank, standard track, ROPS Cab, hydraulic controls, blade, drawbar, sweeps, cab screen guards, fuel tank guard, heavy duty radiator grill, transmission guard, and operator.

**Shipping weight includes lubricants, coolant, 10% fuel tank, standard track, ROPS cab, sweeps, cab screen guards, fuel tank guard, heavy duty radiator grill, transmission guard, and hydraulic controls.

***Ground pressure with Moderate Service shoe. Operating weight and corresponding ground pressure vary based on actual equipment installed.



Blades

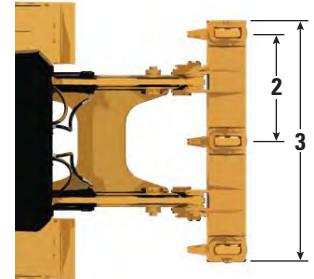
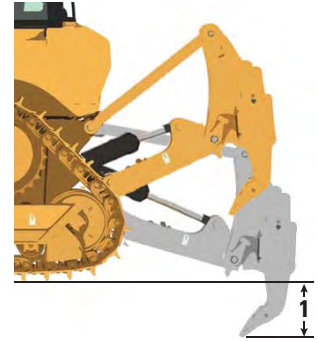
	6SU		6A	
Capacity	6.1 m ³	8.0 yd ³	4.0 m ³	5.2 yd ³
7 Width	3260 mm	128.3 in	4166 mm	164.0 in
8 Height	2012 mm	79.2 in	1700 mm	67.0 in
9 Dig Depth	470 mm	18.5 in	506 mm	19.9 in
10 Ground Clearance	1162 mm	45.7 in	1142 mm	45.0 in
11 Maximum Tilt	743 mm	29.3 in	408 mm	16.1 in
Weight ⁽¹⁾	3101 kg	6,837 lb	2943 kg	6,489 lb

⁽¹⁾ Does not include hydraulic controls but includes push-arm or C-frame, blade tilt brace and tilt cylinder where fitted.

D6 GC Forestry Track-Type Tractor Specifications

Rippers

Type	Fixed Parallelogram	
2 Number of pockets	3 – Multiple Shank	
3 Overall Beam Width	2190 mm	86.2 in
Weight with standard shanks	1644 kg	3,624 lb
1 Maximum Penetration	500 mm	19.7 in
Maximum Penetration Force	76 kN	17,085 lbf
Pry-out Force	116.5 kN	26,190 lbf



Standards

ROPS/FOPS	ROPS (Rollover Protective Structure) offered by Caterpillar meets ROPS criteria ISO 3471:2008
	FOPS (Falling Object Protective Structure) meets FOPS criteria ISO 3449:2005
Brakes	Brakes meet the standard SAE J/ISO 10265:2008
Cab	Meets appropriate standards as listed below
<ul style="list-style-type: none"> The operator sound exposure Leq (equivalent sound pressure level) measured according to the work cycle procedures specified in ISO 6396 is 85 dB(A), for a cab by Caterpillar, when properly installed and maintained and tested with the doors and windows closed. Hearing protection may be needed when operating with an open operator station and cab (when not properly maintained for doors/windows open) for extended periods or in noisy environment(s). The exterior sound pressure level for the standard machine measured at a distance of 16 m (52.5 ft) radius according to the test procedure specifics in ISO 6395, mid gear moving operation, is 116 dB(A). 	

D6 GC Forestry Standard and Optional Equipment

Standard and Optional Equipment

Standard and optional equipment may vary. Consult your Cat dealer for details.

	Standard	Optional		Standard	Optional
POWER TRAIN			BULLDOZERS		
Cat 3306B Direct Injection Turbocharged (DIT) diesel engine	✓		6 SU installation		✓
Elevated sprocket final drives	✓		6 SU installation with guarded tilt lines		✓
Elevated sprocket final drives (Arctic Weather sealing)		✓	6A installation with mechanical tilt		✓
Clutch and brake steering with 2-lever steering control	✓		UNDERCARRIAGE		
Belt driven radiator fan	✓		Undercarriage with carrier roller and general duty track rollers (7) and idlers	✓	
Manually reversible radiator fan (Cold weather climates)		✓	Undercarriage with carrier roller, center guiding guard, and general duty track rollers (7) and idlers		✓
Fuel lines – up to B30 biodiesel compatible		✓	Heavy Duty Sealed and Lubricated track link	✓	
Heated fuel lines (Cold weather climates)		✓	560 mm (22 in) Moderate Service track shoes	✓	
Ether starting capability – cold weather		✓	560 mm (22 in) Extreme Service track shoes		✓
OPERATOR ENVIRONMENT			610 mm (24 in) Moderate Service track shoes		✓
Open canopy with Integrated Roll Over Protective Structure (ROPS/FOPS)	✓		SERVICE AND MAINTENANCE		
Enclosed cab with Integrated Roll Over Protective Structure (ROPS/FOPS)		✓	Modular major components	✓	
Vinyl seat with retractable seat belt	✓		Wide access doors and grouped service points	✓	
Cloth seat with retractable seat belt		✓	Basic lubricant	✓	
Air conditioning		✓	Ecology drains		*
Four halogen lights	✓		Lockable shovel holder bracket		✓
Six halogen lights		✓	Arctic lubricant		✓
Additional interior mirror		✓	Antifreeze –50° C (–58° F)		✓
CAT TECHNOLOGY					
Product Link™, Cellular PL641	✓				
Product Link, Satellite PL631		✓			
No Product Link		✓			
BLADES					
Semi-Universal		✓			
Semi-Universal, land clearing		*			
Angle blade		✓			
Angle blade, land clearing		*			

(continued on next page)

*Recommended

Not all features are available in all regions. Please check with your local Cat dealer for specific offering availability in your area.

For additional information, refer to the Technical Specifications brochure available at www.cat.com or your Cat dealer.

D6 GC Forestry Standard and Optional Equipment

Standard and Optional Equipment *(continued)*

Standard and optional equipment may vary. Consult your Cat dealer for details.

	Standard	Optional		Standard	Optional
ATTACHMENTS			ELECTRICAL		
Multi-shank ripper with straight, or curved, shanks		✓	Standard alternator	✓	
Rigid drawbar		✓	Standard battery	✓	
Winch (field installed)		*	Heavy duty battery (Cold weather climates)		✓
No rear attachment		✓	Engine coolant heater – 220V (External power source required)		✓
HYDRAULICS					
Lift and tilt hydraulics	✓				
Lift and tilt, ripper hydraulics		✓			
GUARDS					
Basic radiator grill	✓				
Heavy duty radiator grill		*			
Perforated hood engine enclosure	✓				
Solid hood engine enclosure		✓			
Rear transmission guard		*			
Heavy duty fuel/hydraulic tank guard with filler cap protection		*			
Cleaner cap and seal guards		*			
Sweeps		*			
Side, rear and/or door screens for cab or canopy		*			

*Recommended

Not all features are available in all regions. Please check with your local Cat dealer for specific offering availability in your area.

For additional information, refer to the Technical Specifications brochure available at www.cat.com or your Cat dealer.

For more complete information on Cat products, dealer services, and industry solutions, visit us on the web at www.cat.com

© 2020 Caterpillar
All rights reserved

Materials and specifications are subject to change without notice. Featured machines in photos may include additional equipment. See your Cat dealer for available options.

CAT, CATERPILLAR, LET'S DO THE WORK, their respective logos, "Caterpillar Corporate Yellow," the "Power Edge" and Cat "Modern Hex" trade dress as well as corporate and product identity used herein, are trademarks of Caterpillar and may not be used without permission.

AEXQ2904 (06-2020)
Build Number: 01A
(AME, APD excluding
Japan/Korea, CIS)

