

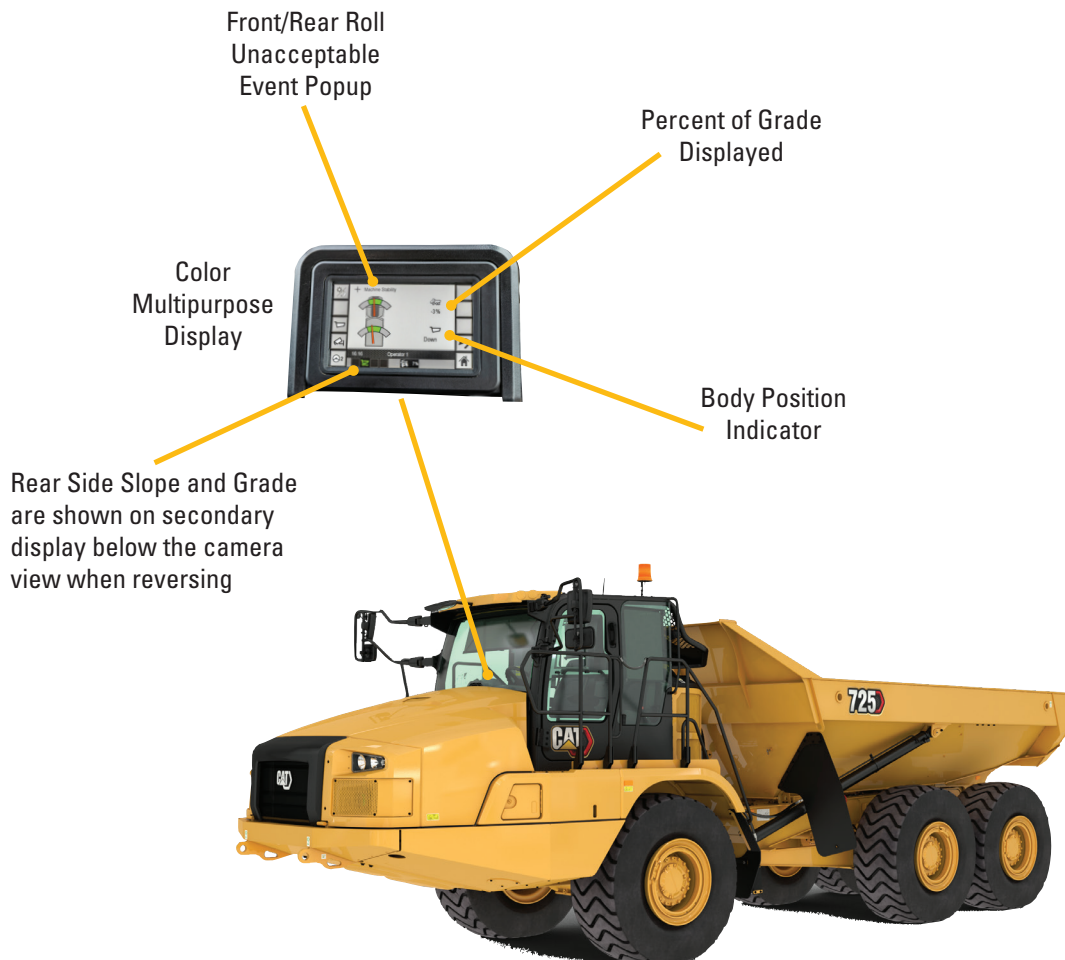
# Cat® DETECT with Stability Assist

for Articulated Trucks



## OPERATOR SAFETY AND CONVENIENCE, ENHANCED CONTROL, AND IMPROVED PERFORMANCE

- Increases awareness of machine stability during operation by warning operator if machine is approaching an un-safe angle, ultimately resulting in machine safety and uptime.
- An alarm sounds, the Front/Rear Roll Unacceptable event popup appears, and the Machine Stability screen displays when the needle goes beyond the safe operating zone (green).
- Rear camera will remain visible during reverse operation.



DETECT



**> BOOST OPERATOR  
EFFICIENCY.  
REDUCE COSTS.  
WORK SAFER.**

- Fully automatic feature with no operator intervention required.
- Allow operators to be more aware of their surroundings and be more efficient in their operation of the truck.
- Integrated into the color multipurpose display with audible warning.
- Monitors angles of tractor, trailer and grade independently and warns operator if machine is approaching un-safe angle, prevents hoist if un-safe and stops hoist when tipping if necessary.

**> FULLY  
INTEGRATED.**

- Built in at the factory – components are integrated into the truck for optimal performance.
- Standard on all articulated trucks. Unique to the market and only available on Cat® articulated trucks since 2017.
- Logs roll-over events and can alert and report via VisionLink™, My.Cat.Com and Cat App.
- Helps towards preventing tractor and trailer roll-over events.

**> LEARN MORE.**

- Talk with your local Cat dealer to understand how Cat Detect with Stability Assist will enhance your business.

[www.cat.com](http://www.cat.com)

CAT, CATERPILLAR, LET'S DO THE WORK, their respective logos, "Caterpillar Yellow", the "Power Edge" and Cat "Modern Hex" trade dress as well as corporate and product identity used herein, are trademarks of Caterpillar and may not be used without permission.

VisionLink is a trademark of Trimble Navigation Limited, registered in the United States and in other countries.



AEXQ2920-00  
Global  
© 2020 Caterpillar  
All Rights Reserved

