

Cat® PAYLOAD

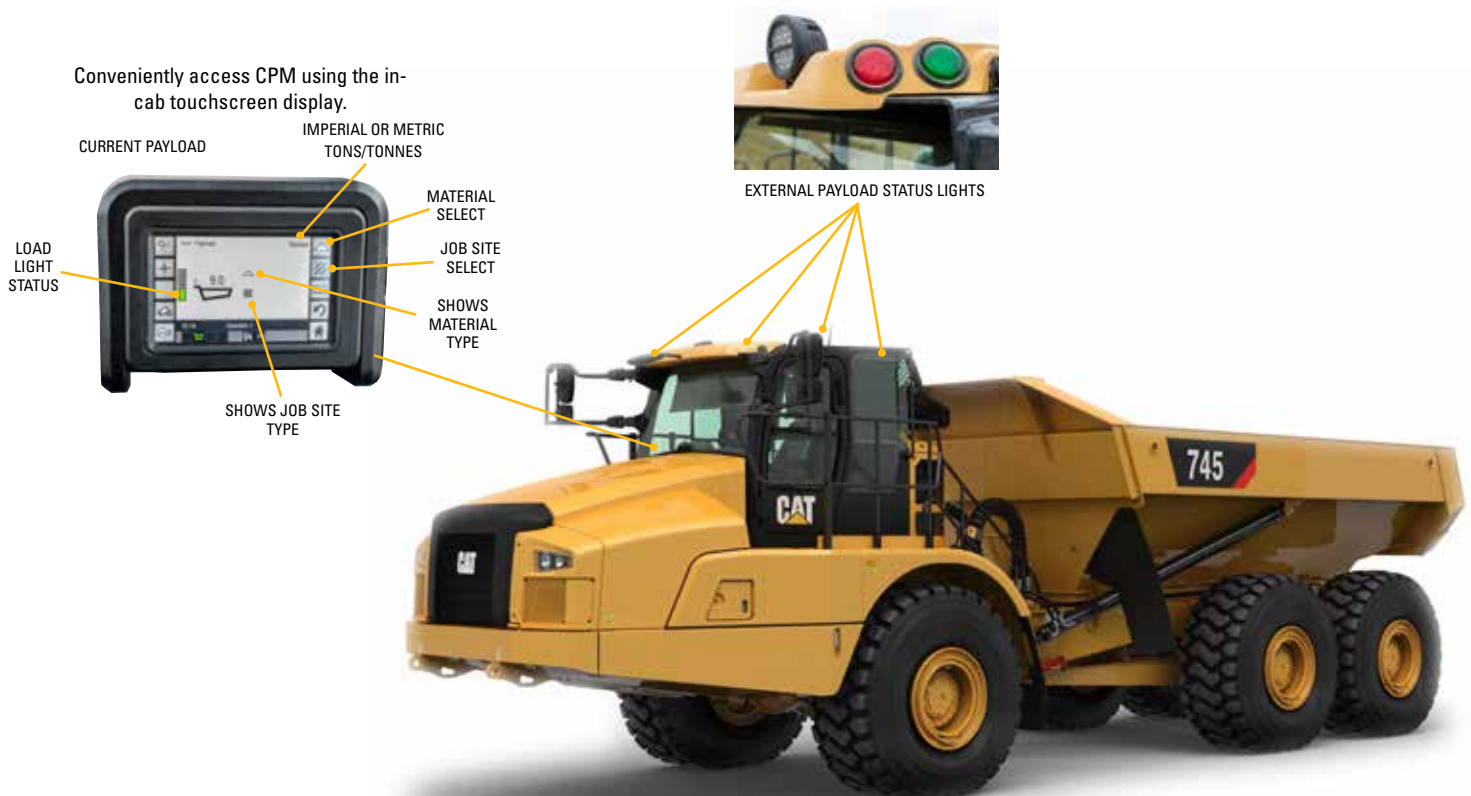
for Articulated Trucks



CAT PRODUCTION MEASUREMENT PROVIDES REAL-TIME PAYLOAD INFORMATION

Cat® Production Measurement (CPM) for articulated trucks enables optimized hauling potential and maximized productivity. Automated tracking helps site managers monitor material movement and efficiency metrics to manage production, improve jobsite efficiency, and reduce costs.

- CPM calculates payload using sensors on the walking beams, displaying to both the machine and loading tool operator when rated payload is achieved.
- The system helps to maximize every payload, and therefore productivity, while minimizing overloading and premature wear.
- When CPM is selected, visual lights are fitted to all four corners of the cab.
- CPM gives the loading tool improved visual indication of payload.



PAYLOAD



> PRODUCTIVITY/ EFFICIENCY

- **Increase productivity** – real-time payload weighing information and instant feedback keeps haul trucks fully loaded, moving, and reaching maximized production levels – and the fleet working at optimum potential.
- **Work confidently, without estimation** – in-cab monitor displays payload weight and status and external lights automatically signal loader operator when target payload is achieved.
- **Enhance hauling capability** – load trucks to capacity without overloading; move more material aligning to machine capability and performance.
- **Improve jobsite efficiency, lower costs** – optimize machine use; reduce over- and under-loading, component wear, and cycles; save time, labor, fuel, and costs.
- **Track material movement** – track production from the cab with quick access to daily weights, loads and cycle counts, and totals.
- **Manage your operation** – site managers can view payload data online via VisionLink® to monitor production and efficiency metrics and manage the business.

> FEATURES AND DISPLAY

- **Advanced weighing features and easy-to-view display and payload status indicators** – assist with payload accuracy and speed the loading cycle.
- **Real-time weighing** – displays immediate load weights in the cab and continuous payload weight during travel.
- **Carry-back compensation** – calculates material not dumped with last weighed load for accurate production values.
- **Empty weight calibration** – allows the operator to re-zero empty weight of truck to ensure accuracy.
- **Daily reporting** – view daily totals from the cab, plus productivity and efficiency metrics via VisionLink.
- **Color display** – integrated in-cab display provides clear view of payload data and unobstructed view of work area.
- **Resettable trip and materials totals** – tracks production by operator, job-site, and material type.
- **External payload lights** – green and red indicator lights signal real-time load status to loader operator: empty, partial, last pass, and fully loaded. These lights are visually located on each corner of the cab.

> ADVANCED PRODUCTIVITY

- **Automatically track** material movement, monitor daily progress, and make timely decisions to keep the operation running at peak efficiency using online VisionLink Payload Reporting and Advanced Productivity.
- **View trends** to help improve bidding accuracy and profitability.

For more information and model availability, please consult your local Cat dealer.

www.cat.com

CAT, CATERPILLAR, LET'S DO THE WORK, their respective logos, "Caterpillar Yellow", the "Power Edge" and Cat "Modern Hex" trade dress as well as corporate and product identity used herein, are trademarks of Caterpillar and may not be used without permission.

VisionLink is a trademark of Trimble Navigation Limited, registered in the United States and in other countries.

AEXQ2787-00
Global
© 2020 Caterpillar
All Rights Reserved

