



# 325

## Hydraulic Excavator

# Technical Specifications

Configurations and features may vary by region. Please consult your Cat® dealer for availability in your area.

## Table of Contents

### 325 Hydraulic Excavator

<b>Specifications</b> .....	<b>2</b>	Major Component Weights .....	4
Engine .....	2	Dimensions .....	5
Swing Mechanism .....	2	Blade Dimensions (Long Undercarriage only) .....	6
Weights .....	2	Working Ranges and Forces .....	7
Track .....	2	Bucket Specifications and Compatibility .....	8
Drive .....	2	Attachments Offering Guide .....	9
Hydraulic System .....	2	<b>Standard and Optional Equipment</b> .....	<b>10</b>
Service Refill Capacities .....	2	<b>Cab Options</b> .....	<b>12</b>
Standards .....	3	<b>Dealer Installed Kits and Attachments</b> .....	<b>13</b>
Sound Performance .....	3	<b>325 Environmental Declaration</b> .....	<b>14</b>
Operating Weights and Ground Pressures .....	3		

### 325 Tunneling Hydraulic Excavator Specialty Configurations

<b>Key Features and Benefits</b> .....	<b>15</b>	Air Conditioning System .....	16
<b>Specifications</b> .....	<b>16</b>	Operating Weights and Ground Pressures .....	17
Engine .....	16	Major Component Weights .....	17
Swing Mechanism .....	16	Dimensions .....	18
Weights .....	16	Working Ranges and Forces .....	19
Track .....	16	Hammer Working Range Charts – Short Reach .....	20
Drive .....	16	Bucket Specifications and Compatibility .....	21
Hydraulic System .....	16	Attachments Offering Guide .....	21
Service Refill Capacities .....	16	<b>Standard and Optional Equipment</b> .....	<b>22</b>
Standards .....	16	<b>Dealer Installed Kits and Attachments</b> .....	<b>24</b>



オフロード法2014年  
基準適合

# 325 Hydraulic Excavator Specifications

## Engine

Engine Model	Cat® C4.4	
Net Power		
ISO 9249	128.5 kW	172 hp
ISO 9249 (DIN)	175 hp (metric)	
Engine Power		
ISO 14396	129.4 kW	174 hp
ISO 14396 (DIN)	176 hp (metric)	
Bore	105 mm	4 in
Stroke	127 mm	5 in
Displacement	4.4 L	269 in <sup>3</sup>
Biodiesel Capability	Up to B20 <sup>(1)</sup>	

- Meets U.S. EPA Tier 4 Final, EU Stage V, and Japan 2014 emission standards.
- Recommended for use up to 4500 m (14,760 ft) altitude with engine power derate above 3000 m (9,840 ft).
- Advertised power is tested per the specified standard in effect at the time of manufacture.
- Net power advertised is the power available at the flywheel when the engine is equipped with fan, air intake system, exhaust system and alternator.
- Engine speed at 2,200 rpm.

<sup>(1)</sup>Cat diesel engines are required to use ULSD (ultra-low sulfur diesel fuel with 15 ppm of sulfur or less) or ULSD blended with the following lower-carbon intensity fuels\*\* up to:

- ✓ 20% biodiesel FAME (fatty acid methyl ester)\*
- ✓ 100% renewable diesel, HVO (hydrotreated vegetable oil) and GTL (gas-to-liquid) fuels

Refer to guidelines for successful application. Please consult your Cat dealer or “Caterpillar Machine Fluids Recommendations” (SEBU6250) for details.

*\*Engines with no aftertreatment devices can use higher blends, up to 100% biodiesel (for use of blends higher than 20% biodiesel, consult your Cat dealer).*

*\*\*Tailpipe greenhouse gas emissions from lower-carbon intensity fuels are essentially the same as traditional fuels.*

## Swing Mechanism

Swing Speed	11.12 rpm	
Maximum Swing Torque	82 kN·m	60,480 lbf·ft

## Weights

Operating Weight	22 400 kg	49,400 lb
<ul style="list-style-type: none"> <li>• Standard undercarriage, Reach boom, R2.9B1 (9'6") stick, Heavy Duty Excavation (HDX) 0.90 m<sup>3</sup> (1.18 yd<sup>3</sup>) bucket, 600 mm (24") triple grouser shoes and 4.9 mt (10,800 lb) counterweight.</li> </ul>		
Operating Weight	27 600 kg	60,800 lb
<ul style="list-style-type: none"> <li>• Long undercarriage, Reach boom, R2.9B1 (9'6") stick, HDX 0.90 m<sup>3</sup> (1.18 yd<sup>3</sup>) bucket, 600 mm (24") HD triple grouser shoes and 8.3 mt (18,300 lb) counterweight.</li> </ul>		

## Track

Optional Track Shoes Width	600 mm	24 in
Optional Track Shoes Width	700 mm	28 in
Optional Track Shoes Width	790 mm	31 in
Number of Shoes (each side) – for Standard Undercarriage	45	
Number of Track Rollers (each side) – for Standard Undercarriage	7	
Number of Shoes (each side) – for Long Undercarriage	49	
Number of Track Rollers (each side) – for Long Undercarriage	8	
Number of Carrier Rollers (each side)	2	

## Drive

Gradeability	35°/70%	
Maximum Travel Speed	5.7 km/h	3.5 mph
Maximum Drawbar Pull	201 kN	45,232 lbf

## Hydraulic System

Main System – Maximum Flow – Implement	429 L/min	113 gal/min
Maximum Pressure – Equipment – Normal	35 000 kPa	5,075 psi
Maximum Pressure – Travel	35 000 kPa	5,075 psi
Maximum Pressure – Swing	27 500 kPa	3,988 psi
Boom Cylinder – Bore	125 mm	5 in
Boom Cylinder – Stroke	1410 mm	56 in
Stick Cylinder – Bore	140 mm	6 in
Stick Cylinder – Stroke	1504 mm	59 in
Bucket Cylinder – Bore	120 mm	5 in
Bucket Cylinder – Stroke	1104 mm	43 in

## Service Refill Capacities

Fuel Tank Capacity	313 L	82.7 gal
Cooling System	11.8 L	3.1 gal
Engine Oil (with filter)	15 L	4.0 gal
Swing Drive	5.5 L	1.5 gal
Final Drive (each)	4.5 L	1.2 gal
Hydraulic System (including tank)	230 L	60.8 gal
Hydraulic Tank (including suction pipe)	111 L	29.3 gal
Diesel Exhaust Fluid (DEF) Tank	26 L	6.9 gal

# 325 Hydraulic Excavator Specifications

## Standards

Brakes	ISO 10265:2008
Cab/Rollover Protective Structure (ROPS)	ISO 12117-2:2008
Cab/Operator Protective Guards (OPG) (optional)	ISO 10262:1998 Level II

## Sound Performance

ISO 6395:2008 (external)	97 dB(A)
ISO 6396:2008 (inside cab)	70 dB(A)

- Hearing protection may be needed when operating with an open operator station and cab (when not properly maintained or doors/windows open) for extended periods or in a noisy environment.

## Operating Weights and Ground Pressures

	600 mm (24 in) Triple Grouser Shoes		600 mm (24 in) HD Triple Grouser Shoes		700 mm (28 in) HD Triple Grouser Shoes		790 mm (31 in) Triple Grouser Shoes		790 mm (31 in) HD Triple Grouser Shoes	
	Weight	Ground Pressure	Weight	Ground Pressure	Weight	Ground Pressure	Weight	Ground Pressure	Weight	Ground Pressure
	kg (lb)	kPa (psi)	kg (lb)	kPa (psi)	kg (lb)	kPa (psi)	kg (lb)	kPa (psi)	kg (lb)	kPa (psi)
<b>Base Machine Configurations</b>										
<b>Base Frame with Track Rollers and Carrier Rollers</b>										
<b>4.9 mt (10,800 lb) Counterweight + Standard Undercarriage Base Machine</b>										
Reach Boom + R2.9B1 (9'6") Stick + 0.90 m <sup>3</sup> (1.18 yd <sup>3</sup> ) GDX Bucket	22 400 (49,400)	51.6 (7.5)	—	—	—	—	22 900 (50,500)	40.1 (5.8)	—	—
<b>8.3 mt (18,300 lb) Counterweight + Long Undercarriage Base Machine</b>										
Reach Boom + R2.9B1 (9'6") Stick + 0.90 m <sup>3</sup> (1.18 yd <sup>3</sup> ) HDX Bucket + AUX lines (HP + QC)	—	—	27 600 (60,800)	57.4 (8.3)	27 900 (61,500)	49.7 (7.2)	—	—	28 300 (62,400)	44 (6.5)

All operating weights include a 90% fuel tank with 75 kg (165 lb) operator.

# 325 Hydraulic Excavator Specifications

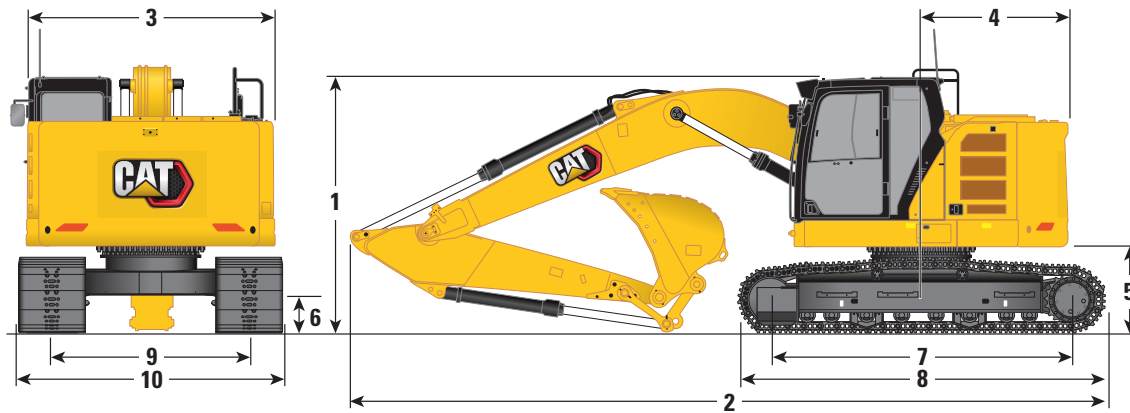
## Major Component Weights

	kg	lb
Base Machine Weight (with counterweight, upper frame, undercarriage with track rollers and two boom cylinders – does not include boom, stick, bucket, blade, stick cylinder, bucket cylinder, tracks, 90% fuel tank and 75 kg [165 lb] operator).		
With 4.9 mt (10,800 lb) Counterweight and Standard Undercarriage	15 800	34,830
With 4.9 mt (10,800 lb) Counterweight and Long Undercarriage	16 630	36,660
With 4.9 mt (10,800 lb) Counterweight and Long Undercarriage (for use with Blade)	17 490	38,560
With 8.3 mt (18,300 lb) Counterweight and Long Undercarriage	20 250	44,640
Track Shoes for Standard Undercarriage:		
600 mm (24") Width, 10 mm (0.39") Thick, Triple Grouser Track Shoes	2600	5,730
790 mm (31") Width, 10 mm (0.39") Thick, Triple Grouser Track Shoes with Step Extension	3110	6,850
Track Shoes for Long Undercarriage:		
600 mm (24") Width, 10 mm (0.39") Thick, Triple Grouser Track Shoes	2830	6,230
600 mm (24") Width, 12.5 mm (0.49") Thick, HD Triple Grouser Track Shoes	3190	7,040
700 mm (28") Width, 12.5 mm (0.49") Thick, HD Triple Grouser Track Shoes	3520	7,770
790 mm (31") Width, 10 mm (0.39") Thick, Triple Grouser Track Shoes with Step Extension	3380	7,460
790 mm (31") Width, 12.5 mm (0.49") Thick, HD Triple Grouser Track Shoes with Step Extension	3860	8,500
Two Boom Cylinders	420	940
Weight of 90% Fuel Tank and 75 kg (165 lb) Operator	310	690
Blades (including lines, cylinders, frame modifications):		
2980 mm (9'9") Blade (for use with 4.9 mt [10,800 lb] counterweight and 600 mm [24"] track shoes)	1090	2,410
3170 mm (10'5") Blade (for use with 4.9 mt [10,800 lb] counterweight and 700 mm [28"] or 790 mm [31"] track shoes)	1130	2,480
Counterweights:		
4.9 mt (10,800 lb) Counterweight	4900	10,800
8.3 mt (18,300 lb) Counterweight	8300	18,300
Swing Frames:		
Swing Frame with Standard Base Frame and HD Track Rollers for 4.9 mt (10,800 lb) Counterweight – without Blade	6800	15,000
Swing Frame with Standard Base Frame and SD Track Rollers for 4.9 mt (10,800 lb) Counterweight – for use with Blade	7050	15,530
Swing Frame with Standard Base Frame and SD Track Rollers for 8.3 mt (18,300 lb) Counterweight – without Blade	6960	15,350
Undercarriages:		
Standard Undercarriage	4100	9,030
Long Undercarriage	4560	10,050
Booms (including lines, pins, stick cylinder):		
Reach Boom 5.7 m (18'8")	1740	3,830
HD Reach Boom 5.7 m (18'8")	1910	4,220
Auxiliary (AUX) Lines (High Pressure [HP] + Quick Coupler [QC])	130	290
Sticks (including lines, pins, bucket cylinder, bucket linkage):		
Reach Stick R2.9B1 (9'6")	1030	2,270
HD Reach Stick R2.9B1 (9'6")	1140	2,520
AUX Lines (HP + QC)	60	130
Buckets (without linkage, with tips and side cutters):		
0.80 m <sup>3</sup> (1.05 yd <sup>3</sup> ) General Duty Excavation (GDX) B Linkage	700	1,530
0.90 m <sup>3</sup> (1.18 yd <sup>3</sup> ) GDX B Linkage	730	1,610
0.90 m <sup>3</sup> (1.18 yd <sup>3</sup> ) HDX B Linkage	850	1,870
1.19 m <sup>3</sup> (1.55 yd <sup>3</sup> ) HDX B Linkage	1000	2,210
Shovel Crane:		
Hook, Valves and Sensors	60	100
Auxiliary Lines:		
HP Lines for Reach Boom	110	240
HP Lines for Reach Stick	50	110
Auxiliary Valves for HP	110	240

# 325 Hydraulic Excavator Specifications

## Dimensions

All dimensions are approximate and may vary depending on bucket selection.

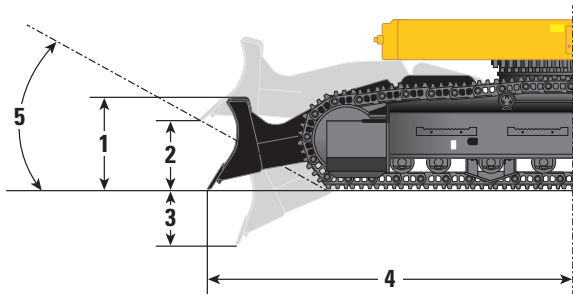


Boom Option		Reach Boom 5.7 m (18'8")			
Stick Option		Reach Stick R2.9B1 (9'6")			
Undercarriage Type		Standard		Long	
1 Machine Height:					
Top of Cab Height		3070 mm	10'1"	3080 mm	10'1"
Top of GNSS Antenna Height (if installed)		2620 mm	8'7"	2620 mm	8'7"
Top of OPG Height		3210 mm	10'6"	3220 mm	10'7"
Shipping Height without OPG		3210 mm	10'6"	3210 mm	10'6"
Handrail Height		3180 mm	10'5"	3190 mm	10'5"
With Boom/Stick/Bucket Installed		3210 mm	10'6"	3210 mm	10'6"
With Boom/Stick Installed		2980 mm	9'9"	2980 mm	9'9"
With Boom Installed		2520 mm	8'3"	2530 mm	8'3"
With Boom/Stick/Bucket Installed (with auxiliary lines)		3210 mm	10'6"	3210 mm	10'6"
With Boom/Stick Installed (with auxiliary lines)		3210 mm	10'6"	3210 mm	10'6"
With Boom Installed (with auxiliary lines)		2980 mm	9'9"	2980 mm	9'9"
2 Machine Length:					
With Boom/Stick/Bucket Installed (with/without auxiliary lines)		8680 mm	28'6"	8870 mm	29'1"
With Boom/Stick Installed (with/without auxiliary lines)		8660 mm	28'5"	8850 mm	29'0"
With Boom Installed (with/without auxiliary lines)		7590 mm	24'11"	7780 mm	25'6"
With Blade Installed (with auxiliary lines)		—	—	9570 mm	31'5"
3 Upperframe Width		2990 mm	9'10"	2990 mm	9'10"
4 Tail Swing Radius		1780 mm	5'10"	1810 mm	5'11"
5 Counterweight Clearance		1020 mm	3'3"	980 mm	3'2"
6 Ground Clearance		440 mm	1'4"	440 mm	1'4"
7 Length to Center of Rollers		3270 mm	10'9"	3650 mm	12'0"
8 Track Length		4070 mm	13'4"	4460 mm	14'7"
9 Track Gauge		2200 mm	7'3"	2380 mm	7'10"
10 Undercarriage Width:					
600 mm (24") Shoes		2800 mm	9'2"	2980 mm	9'9"
700 mm (28") Shoes		—	—	3080 mm	10'1"
790 mm (31") Shoes		2990 mm	9'10"	3170 mm	10'5"
Bucket Type		GDX		HDX	
Bucket Capacity		0.90 m³	1.18 yd³	0.90 m³	1.18 yd³
Bucket Tip Radius		1490 mm	4'11"	1490 mm	4'11"

# 325 Hydraulic Excavator Specifications

## Blade Dimensions (Long Undercarriage only)

All dimensions are approximate.

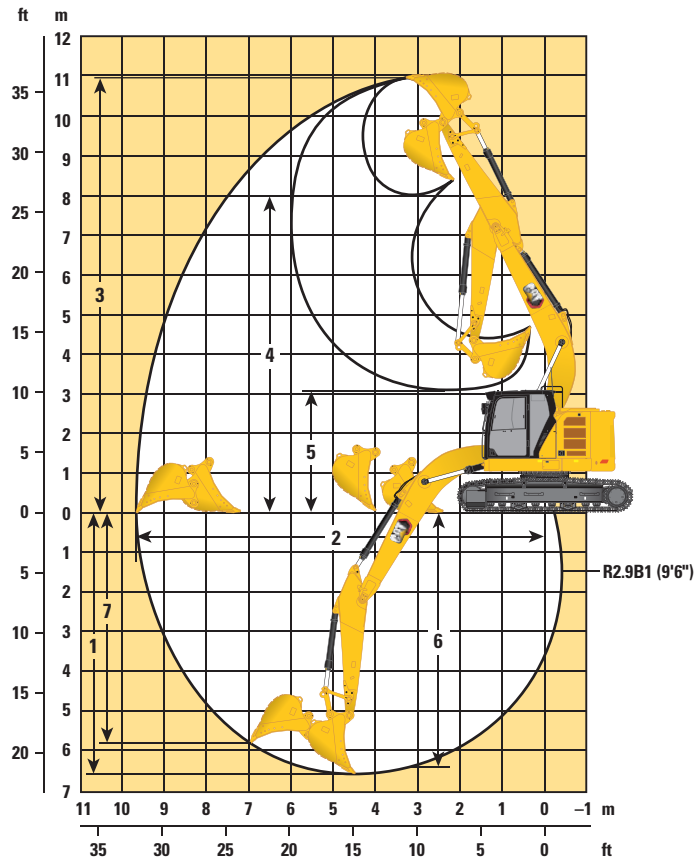


Track Shoe Width	600 mm (24")		700 mm (28")		790 mm (31")	
Blade Options	2980 mm (9'9")		3170 mm (10'5")			
1 Blade Moldboard Height	696 mm	2'3"	696 mm		2'3"	
2 Blade Maximum Cutting Edge Rise	585 mm	1'11"	585 mm		1'11"	
3 Blade Minimum Cutting Edge Depth	467 mm	1'6"	467 mm		1'6"	
4 Blade Edge from Machine Center	2930 mm	9'7"	2930 mm		9'7"	
5 Ramp Angle	28.8 degrees		28.8 degrees			
Blade Down Force						
Ground Level	151.4 kN	34 kLbf	151.4 kN		34 kLbf	
Maximum	170.6 kN	38.4 kLbf	170.6 kN		38.4 kLbf	

# 325 Hydraulic Excavator Specifications

## Working Ranges and Forces

All dimensions are approximate and may vary depending on bucket selection.



Boom Option	Reach Boom 5.7 m (18'8")			
Stick Option	Reach Stick R2.9B1 (9'6")			
Undercarriage Type	Standard		Long	
1 Maximum Digging Depth	6600 mm	21'8"	6600 mm	21'8"
2 Maximum Reach at Ground Line	9670 mm	31'9"	9680 mm	31'9"
3 Maximum Cutting Height	10 930 mm	35'10"	10 930 mm	35'10"
4 Maximum Loading Height	8000 mm	26'3"	8000 mm	26'3"
5 Minimum Loading Height	3080 mm	10'1"	3080 mm	10'1"
6 Maximum Depth Cut for 2440 mm (8'0") Level Bottom	6420 mm	21'1"	6420 mm	21'1"
7 Maximum Vertical Wall Digging Depth	5820 mm	19'1"	5820 mm	19'1"
Minimum Working Equipment Radius	2330 mm	7'8"	2330 mm	7'8"
Bucket Digging Force (ISO)	148 kN	33,272 lbf	148 kN	33,272 lbf
Stick Digging Force (ISO)	103 kN	23,155 lbf	103 kN	23,155 lbf
Bucket Type	HDX		HDX	
Bucket Capacity	0.90 m <sup>3</sup>	1.18 yd <sup>3</sup>	0.90 m <sup>3</sup>	1.18 yd <sup>3</sup>
Bucket Tip Radius	1489 mm	4'11"	1489 mm	4'11"

# 325 Hydraulic Excavator Specifications

## Bucket Specifications and Compatibility

	Linkage	Width		Capacity		Weight		Fill	Standard Undercarriage		Long Undercarriage					
									4.9 mt (10,800 lb) Counterweight		4.9 mt (10,800 lb) Counterweight				8.3 mt (18,300 lb) Counterweight	
									No Blade		No Blade		With Blade Up in Front		No Blade	
									Reach Boom	HD Reach Boom	Reach Boom	HD Reach Boom	Reach Boom	HD Reach Boom	Reach Boom	HD Reach Boom
									R2.9 (9'6")	HD R2.9 (9'6")	R2.9 (9'6")	HD R2.9 (9'6")	R2.9 (9'6")	HD R2.9 (9'6")	R2.9 (9'6")	HD R2.9 (9'6")
Pin-On (No Quick Coupler)																
General Duty Excavation	B	950	37	0.80	1.05	686	1,511	100	●	⊙	●	●	●	●	●	●
	B	1050	41	0.90	1.18	719	1,584	100	⊙	⊖	●	●	●	●	●	●
	B	1150	45	1.00	1.31	751	1,655	100	⊖	○	⊙	⊙	●	●	●	●
Heavy Duty Excavation	B	950	37	0.80	1.05	796	1,755	100	⊙	⊙	●	●	●	●	●	●
	B	1050	41	0.90	1.17	835	1,841	100	⊖	⊖	●	⊙	●	●	●	●
Heavy Duty Excavation, Skeleton	B	1050	41	0.90	1.18	855	1,885	100	⊖	⊖	●	⊙	●	●	●	●
Tamping	B	2200	86	0.72	0.94	868	1,913	100	⊙	⊙	●	●	●	●	●	●
	B	2200	86	0.90	1.18	891	1,965	100	⊖	○	⊙	⊙	●	●	●	●
Maximum load with pin-on (payload + bucket)								kg	2290	2170	2655	2540	2900	2845	3780	3730
								lb	5,049	4,784	5,853	5,600	6,393	6,272	8,333	8,223
With Pin Grabber Coupler																
General Duty Excavation	B	950	37	0.80	1.05	686	1,511	100	⊖	○	⊙	⊙	●	●	●	●
	B	1050	41	0.90	1.18	719	1,584	100	○	○	⊖	⊖	⊙	⊙	●	●
	B	1150	45	1.00	1.31	751	1,655	100	◇	◇	⊖	○	⊙	⊖	●	●
Heavy Duty Excavation	B	950	37	0.80	1.05	796	1,755	100	○	○	⊙	⊖	●	●	●	●
	B	1050	41	0.90	1.17	835	1,841	100	○	◇	⊖	⊖	⊙	⊙	●	●
Heavy Duty Excavation, Skeleton	B	1050	41	0.90	1.18	855	1,885	100	◇	◇	⊖	○	⊙	⊙	●	●
Tamping	B	2200	86	0.72	0.94	868	1,913	100	○	○	⊙	⊙	●	●	●	●
	B	2200	86	0.90	1.18	891	1,965	100	◇	◇	⊖	○	⊙	⊖	●	●
Maximum load with coupler (payload + bucket)								kg	1868	1748	2233	2118	2478	2423	3358	3308
								lb	4,119	3,854	4,924	4,670	5,463	5,343	7,404	7,294

The above loads are in compliance with hydraulic excavator standard EN474-5:2006 + A3:2013, they do not exceed 87% of hydraulic lifting capacity or 75% of tipping capacity with front linkage fully extended at ground line with bucket curled.

Capacity based on ISO 7451:2007.

Bucket weight with General Duty tips.

### Maximum Material Density:

- 2100 kg/m³ (3,500 lb/yd³)
- ⊙ 1800 kg/m³ (3,000 lb/yd³)
- ⊖ 1500 kg/m³ (2,500 lb/yd³)
- 1200 kg/m³ (2,000 lb/yd³)
- ◇ 900 kg/m³ (1,500 lb/yd³)

Caterpillar recommends using appropriate work tools to maximize the value customers receive from our products. Use of work tools, including buckets, which are outside of Caterpillar's recommendations or specifications for weight, dimensions, flows, pressures, etc. may result in less-than-optimal performance, including but not limited to reductions in production, stability, reliability, and component durability. Improper use of a work tool resulting in sweeping, prying, twisting and/or catching of heavy loads will reduce the life of the boom and stick.



# 325 Hydraulic Excavator Specifications

## Attachments Offering Guide

Not all Attachments are available in all regions. Consult your Cat dealer for configurations available in your region.

☒ Match
 ☐ \* Working range front only
 ☐ † Allowed usage on machine less than 50%
 ☐ No Match

### PIN-ON ATTACHMENTS

Undercarriage		Standard		Long		Long	
Counterweight		4.9 mt (10,800 lb)		4.9 mt (10,800 lb)		8.3 mt (18,300 lb)	
Boom Type		Reach	HD Reach	Reach	HD Reach	Reach	HD Reach
Stick Size		R2.9 (9'6")	HD R2.9 (9'6")	R2.9 (9'6")	HD R2.9 (9'6")	R2.9 (9'6")	HD R2.9 (9'6")
Hydraulic Hammers	H120 GC Side Mount	✓	✓	✓	✓	✓	✓
	H120 S	✓	✓	✓	✓	✓	✓
	H130 S	✓†	✓*	✓†	✓	✓†	✓
Rotary Cutters	RC20	✓	✓	✓	✓	✓	✓

### CAT PIN GRABBER COUPLER ATTACHMENTS

Undercarriage		Standard		Long		Long	
Counterweight		4.9 mt (10,800 lb)		4.9 mt (10,800 lb)		8.3 mt (18,300 lb)	
Boom Type		Reach	HD Reach	Reach	HD Reach	Reach	HD Reach
Stick Size		R2.9 (9'6")	HD R2.9 (9'6")	R2.9 (9'6")	HD R2.9 (9'6")	R2.9 (9'6")	HD R2.9 (9'6")
Hydraulic Hammers	H120 GC Side Mount	✓†*		✓†	✓	✓†	✓
	H120 S	✓†*	✓*	✓†	✓	✓†	✓
	H130 S			✓†	✓*	✓†	✓
Rotary Cutters	RC20	✓	✓	✓	✓	✓	✓

### TRS18 (PIN-ON TOP/S70 BOTTOM) ATTACHMENTS

Some attachments require more hydraulic flow and are best suited with a machine that has HP2 circuits and a tiltrotator with a high flow swivel. Check the hydraulic capability of your machine and tiltrotator and the requirements of your attachment to ensure a proper match.

Undercarriage		Standard		Long		Long	
Counterweight		4.9 mt (10,800 lb)		4.9 mt (10,800 lb)		8.3 mt (18,300 lb)	
Boom Type		Reach	HD Reach	Reach	HD Reach	Reach	HD Reach
Stick Size		R2.9 (9'6")	HD R2.9 (9'6")	R2.9 (9'6")	HD R2.9 (9'6")	R2.9 (9'6")	HD R2.9 (9'6")
Hydraulic Hammers	H115 S	✓	✓*	✓	✓	✓	✓
	H120 S			✓†	✓*	✓†	✓

**NOTE:** Use hammers on tiltrotators less than 10% of working hours per year or maximum 200 hours per year. Refer to your Operation and Maintenance Manual for recommended hydraulic flow requirements.

# 325 Standard and Optional Equipment

## Standard and Optional Equipment

Standard and optional equipment may vary. Consult your Cat dealer for details.

	Standard	Optional		Standard	Optional
<b>CAT TECHNOLOGY</b>			<b>ENGINE</b>		
VisionLink®	✓*		Cat® C4.4 single turbo diesel engine	✓	
VisionLink Productivity		✓	Three selectable modes: Power, Smart, Eco	✓	
Remote Flash	✓		4500 m (14,760 ft) altitude capability with engine power derate above 3000 m (9,840 ft)	✓	
Remote Troubleshoot	✓		50° C (122° F) high-ambient cooling capacity without derate	✓	
Cat Grade Connectivity		✓	–18° C (0° F) cold start capability	✓	
Compatibility with radios and base stations from Trimble, Topcon, and Leica	✓		–32° C (–25° F) cold start capability		✓
Capability to install 3D grade systems from Trimble, Topcon, and Leica	✓		Sealed double element air filter with integrated pre-cleaner	✓	
Cat Grade 2D	✓		1 × 145 amp dual alternator	✓	
Cat Grade 2D with Attachment Ready Option (ARO)		✓	Electric fuel priming pump	✓	
Cat Grade 3D single GNSS		✓	Reversible electric cooling fans	✓	
Cat Grade 3D dual GNSS		✓	Two-stage fuel filtration system with water separator and indicator	✓	
Laser catcher		✓	<b>HYDRAULIC SYSTEM</b>		
Cat Assist:	✓		Electric main control valve	✓	
– Grade Assist			Boom and stick regeneration circuits	✓	
– Boom Assist			Automatic hydraulic oil warm up	✓	
– Bucket Assist			Automatic two-speed travel	✓	
– Swing Assist			Boom and stick drift reduction valve	✓	
Cat Payload:	✓		Tandem type electronic main pump	✓	
– Static weigh			Element type main hydraulic filter	✓	
– Semiautomatic calibration			Hydraulic efficiency monitoring		✓
– Payload/cycle information					
– USB reporting capability					
Work tool recognition (PL161)	✓				
Work tool tracking (PL161)	✓				
Cat Tilt Rotator (TRS) Integration		✓			
Operator Coaching		✓			

(continued on next page)

\*Connect subscription only. Additional subscriptions are available. Contact your Cat dealer for availability.

## Standard and Optional Equipment (continued)

Standard and optional equipment may vary. Consult your Cat dealer for details.

	Standard	Optional		Standard	Optional
<b>UNDERCARRIAGE AND STRUCTURES</b>			<b>ELECTRICAL SYSTEM</b>		
Standard base frame with standard track rollers and standard carrier rollers	✓		Maintenance free battery	✓	
Base frame with standard track rollers and standard carrier rollers for use with blade		✓	LED chassis light, left-hand (LH)/right-hand (RH) boom lights, cab lights – 1,800 lumens	✓	
Base frame with standard track rollers and standard carrier rollers for long undercarriage		✓	Centralized electrical disconnect switch	✓	
Base frame with standard track rollers and standard carrier rollers for long undercarriage for use with blade		✓	Programmable time-delay working lights	✓	
Tie-down points on base frame	✓		Premium surround lighting package		✓
Grease lubricated track	✓		<b>SERVICE AND MAINTENANCE</b>		
Segmented track guiding guards	✓		Scheduled Oil Sampling (S-O-S <sup>SM</sup> ) ports	✓	
Center track guiding guards (standard undercarriage only)		✓	Grouped location for engine oil and fuel filters	✓	
Bottom guards	✓		Ground-level second dipstick for engine oil	✓	
Travel motor guards	✓		Integrated vehicle health management system	✓	
4.9 mt (10,800 lb) counterweight	✓		<b>SAFETY AND SECURITY</b>		
8.3 mt (18,300 lb) counterweight**		✓	Cat Command (remote control)		✓
600 mm (24") triple grouser track shoes	✓		2D E-Fence:	✓	
600 mm (24") HD triple grouser shoes		✓	– E-ceiling		
700 mm (28") triple grouser track shoes		✓	– E-floor		
700 mm (28") HD triple grouser shoes		✓	– E-swing		
790 mm (31") triple grouser track shoes		✓	– E-wall		
790 mm (31") HD triple grouser shoes		✓	– E-cab avoidance		
2980 mm (9'9") blade		✓	Auto hammer stop	✓	
3170 mm (10'5") blade		✓	Rear and right-hand-sideview cameras	✓	
<b>BOOMS, STICKS AND LINKAGES</b>			360° visibility		✓
5.7 m (18'8") Reach boom	✓		Right-hand handrail and hand hold	✓	
5.7 m (18'8") HD Reach boom		✓	Service platform with anti-skid plate and countersunk bolts	✓	
2.9 m (9'6") Reach stick	✓		Hydraulic lock out lever neutralizes all controls	✓	
2.9 m (9'6") HD Reach stick		✓	Ground-level accessible secondary engine shutoff switch in cab	✓	
Bucket linkage, B1 family without lifting eye, Cat Grade	✓		Signaling/warning horn	✓	
Bucket linkage, B1 family with lifting hook for shovel crane		✓	Lockable disconnect switch	✓	
			Shovel crane package		✓
			Operator Protective Guards		✓
			Inspection lighting		✓

\*\*Not compatible with blade.

# 325 Cab Options

## Cab Options

	Comfort	Deluxe	Premium
ROPS	●	●	●
High-resolution 203 mm (8") LCD touchscreen monitor	●	X	X
High-resolution 254 mm (10") LCD touchscreen monitor	○	●	●
Auto bi-level air conditioner	●	●	●
Jog dial and shortcut keys for monitor control	●	●	●
Keyless push-to-start engine control	●	●	●
Height-adjustable console	X	●	●
Height-adjustable console, three steps with tool	●	X	X
Tilt-up left-side console	X	●	●
Fixed left-side console	●	X	X
Mechanical-suspension seat	●	X	X
Heated air-suspension seat	X	●	X
Heated and ventilated air-suspension seat	X	X	●
51 mm (2") seat belt	●	●	●
Monitor integrated Bluetooth® radio with USB/Auxiliary ports	●	●	●
12V DC outlets	●	●	●
Document storage	●	●	●
Overhead storage and rear storage with nets	X	●	●
Beverage holder	●	●	●
Cup holder	●	●	●
Openable two-piece front window	●	●	●
One piece front windshield	X	X	○
Rear window emergency exit	●	●	●
Radial wiper with washer	●	●	X
Parallel wiper	X	X	●
Openable polycarbonate skylight hatch	X	●	●
Openable steel hatch	●	X	X
Dome and lower LED interior lights	●	●	●
Floor welcome light	●	●	●
Roof sunscreen	X	●	●
Roller front sunscreen	●	●	●
Roller rear sunscreen	○	○	●
Washable floor mat	●	●	●
Beacon ready	●	●	●
Cat Stick Steer	○	○	○
Auxiliary relay	X	○	○

● Standard

○ Optional

X Not available

Dealer Installed Kits and Attachments

Attachments may vary. Consult your Cat dealer for details.

<b>CAB</b> <ul style="list-style-type: none"><li>• Rain protector plus cab light cover</li><li>• Polycarbonate roof hatch (Comfort cab only)</li><li>• Sun visor, slider (Comfort cab only)</li><li>• Laminated P5A glass front windshield</li><li>• LH/RH electrical pedal for tool control</li><li>• Armrest kit</li><li>• Seat with 4-point seatbelt capability</li><li>• Dual exit rear window kit</li><li>• 75 mm (3") retractable seat belt</li><li>• Auxiliary relay</li></ul>	<b>GUARDS</b> <ul style="list-style-type: none"><li>• Operator Protective Guards</li><li>• Mesh guard full front</li><li>• Mesh guard half front</li><li>• Full protecting vandalism guard</li></ul> <b>MAINTENANCE</b> <ul style="list-style-type: none"><li>• Dust hose kit</li></ul>	<b>SAFETY AND SECURITY</b> <ul style="list-style-type: none"><li>• Cat Detect – People Detection</li><li>• Cat Command – Remote control kit</li><li>• Seat belt indicator</li><li>• Bluetooth key fob</li></ul> <b>OTHER ATTACHMENTS</b> <ul style="list-style-type: none"><li>• Delayed engine shutdown kit</li><li>• Power clam kit</li></ul>
---	---	---

# 325 Environmental Declaration

The following information applies to the machine at the time of final manufacture as configured for sale in the regions covered in this document. The content of this declaration is valid as of the date issued; however, content related to machine features and specifications are subject to change without notice. For additional information, please see the machine's Operation and Maintenance Manual.

For more information on sustainability in action and our progress, please visit <https://www.caterpillar.com/en/company/sustainability>.

## Engine

- The Cat® C4.4 engine meets U.S. EPA Tier 4 Final, EU Stage V, and Japan 2014 emission standards.
- Cat diesel engines are required to use ULSD (ultra-low sulfur diesel fuel with 15 ppm of sulfur or less) or ULSD blended with the following lower-carbon intensity fuels\*\* up to:
  - ✓ 20% biodiesel FAME (fatty acid methyl ester)\*
  - ✓ 100% renewable diesel, HVO (hydrotreated vegetable oil) and GTL (gas-to-liquid) fuels

Refer to guidelines for successful application. Please consult your Cat dealer or "Caterpillar Machine Fluids Recommendations" (SEBU6250) for details.

*\*Engines with no aftertreatment devices can use higher blends, up to 100% biodiesel (for use of blends higher than 20% biodiesel, consult your Cat dealer).*

*\*\*Tailpipe greenhouse gas emissions from lower-carbon intensity fuels are essentially the same as traditional fuels.*

## Air Conditioning System

- The air conditioning system on this machine contains the fluorinated greenhouse gas refrigerant R134a (Global Warming Potential = 1430). The system contains 0.8 kg (1.8 lb) of refrigerant which has a CO<sub>2</sub> equivalent of 1.144 metric tonnes (1.261 tons).

## Paint

- Based on best available knowledge, the maximum allowable concentration, measured in parts per million (PPM), of the following heavy metals in paint are:
  - Barium < 0.01%
  - Cadmium < 0.01%
  - Chromium < 0.01%
  - Lead < 0.01%

## Sound Performance

ISO 6395:2008 (external) – 97 dB(A)

ISO 6396:2008 (inside cab) – 70 dB(A)

- Hearing protection may be needed when operating with an open operator station and cab (when not properly maintained or doors/windows open) for extended periods or in a noisy environment.

## Oils and Fluids

- Caterpillar factory fills with ethylene glycol coolants. Cat Diesel Engine Antifreeze/Coolant (DEAC) and Cat Extended Life Coolant (ELC) can be recycled. Consult your Cat dealer for more information.
- Cat Bio HYDO™ Advanced is an EU Ecolabel approved biodegradable hydraulic oil.
- Additional fluids are likely to be present, please consult the Operations and Maintenance Manual or the Application and Installation guide for complete fluid recommendations and maintenance intervals.

## Features and Technology

- The following features and technology may contribute to fuel savings and/or carbon reduction. Features may vary. Consult your Cat dealer for details.
  - Advanced hydraulic systems balance power and efficiency
  - Smart mode matches machine power to digging requirements automatically
  - Eco mode minimizes fuel consumption for light applications
  - Increase operating efficiency up to 45% with standard Cat technologies
  - Cut maintenance costs with extended service intervals
  - The latest hydraulic oil filter provides longer life with a 3,000-hour replacement interval

## Recycling

- The materials included in machines are categorized as below with approximate weight percentage. Because of variations of product configurations, the following values in the table may vary.

Material Type	Weight Percentage
Steel	82.67%
Iron	5.61%
Nonferrous Metal	2.68%
Mixed Metal	1.28%
Mixed-Metal and Nonmetal	1.07%
Plastic	1.35%
Rubber	0.08%
Mixed Nonmetallic	0.23%
Fluid	3.33%
Other	1.70%
Uncategorized	0.00%
Total	100%

- A machine with higher recyclability rate will ensure more efficient usage of valuable natural resources and enhance End-of-Life value of the product. According to ISO 16714:2008 (Earthmoving machinery – Recyclability and recoverability – Terminology and calculation method), recyclability rate is defined as percentage by mass (mass fraction in percent) of the new machine potentially able to be recycled, reused, or both.

All parts in the bill of material are first evaluated by component type based on a list of components defined by the ISO 16714:2008 and Japan CEMA (Construction Equipment Manufacturers Association) standards. Remaining parts are further evaluated for recyclability based on material type.

Because of variations of product configurations, the following value in the table may vary.

Recyclability – 98%



# 325

## Tunneling Hydraulic Excavator

***The Cat® 325 Tunneling Excavator is a specially modified design to meet the harsh conditions of underground applications. The machine features a reinforced upper and lower frame as well as a choice of two specially designed sets of front parts: Mass Excavation and Short Reach for tunneling. Other modifications include silicone sealing for each electrical component, a simplified cab, and specific safety features. The machine can be equipped with a variety of tools, from extreme service buckets to hammers and rotary grinders. A shovel crane system is available to help operators work safely by knowing the load on hand.***

### **Machine Modifications to meet Harsh Working Conditions**

- Choice of Tunneling Mass excavation or Short reach front parts to provide high digging forces or work in tight areas.
- Reinforced upper and lower frames to match the toughest conditions found underground.
- All electrical harnesses connections are protected by extra silicone to avoid water entry.
- Simplified cab. Mounting points for fire extinguisher are offered from factory.
- Regulatory features such as extra flashlight for visibility and shovel crane for mass excavation to know load on hand.
- Safety features such as an optional 360° camera and 360° lighting.
- Machine protection including boom light covers and bucket cylinder guard sleeve.
- Standard hammer return filter protects the machine hydraulics in case of hammer seal failure.

# 325 Tunneling Hydraulic Excavator Specifications

## Engine

Engine Model	Cat® C4.4	
Net Power		
ISO 9249	128.5 kW	172 hp
ISO 9249 (DIN)	175 hp (metric)	
Engine Power		
ISO 14396	129.4 kW	174 hp
ISO 14396 (DIN)	176 hp (metric)	
Bore	105 mm	4 in
Stroke	127 mm	5 in
Displacement	4.40 L	269 in <sup>3</sup>
Biodiesel Capability	Up to B20 <sup>(1)</sup>	

- Meets U.S. EPA Tier 4 Final, EU Stage V, and Japan 2014 emission standards.
- Recommended for use up to 4500 m (14,760 ft) altitude with engine power derate above 3000 m (9,840 ft).
- Advertised power is tested per the specified standard in effect at the time of manufacture.
- Net power advertised is the power available at the flywheel when the engine is equipped with fan, air intake system, exhaust system and alternator.
- Engine speed at 2,200 rpm

<sup>(1)</sup>Cat diesel engines are required to use ULSD (ultra-low sulfur diesel fuel with 15 ppm of sulfur or less) or ULSD blended with the following lower-carbon intensity fuels\*\* up to:

- ✓ 20% biodiesel FAME (fatty acid methyl ester)\*
- ✓ 100% renewable diesel, HVO (hydrotreated vegetable oil) and GTL (gas-to-liquid) fuels

Refer to guidelines for successful application. Please consult your Cat dealer or “Caterpillar Machine Fluids Recommendations” (SEBU6250) for details.

*\*Engines with no aftertreatment devices can use higher blends, up to 100% biodiesel (for use of blends higher than 20% biodiesel, consult your Cat dealer).*

*\*\*Tailpipe greenhouse gas emissions from lower-carbon intensity fuels are essentially the same as traditional fuels.*

## Swing Mechanism

Swing Speed	11.12 rpm	
Maximum Swing Torque	82 kN·m	60,480 lbf·ft

## Weights

Operating Weight	25 000 kg	55,100 lb
<ul style="list-style-type: none"> <li>• Long undercarriage, Mass boom, M2.4 (7'10") stick, XSP 0.80 m<sup>3</sup> (1.05 yd<sup>3</sup>) bucket, 600 mm (24") triple grouser shoes and 4.9 mt (10,800 lb) counterweight.</li> </ul>		
Operating Weight	25 100 kg	55,300 lb
<ul style="list-style-type: none"> <li>• Long undercarriage, Short Reach boom, M3.2 (10'5") stick, HDX 0.90 m<sup>3</sup> (1.2 yd<sup>3</sup>) bucket, 600 mm (24") triple grouser shoes and 4.9 mt (10,800 lb) counterweight.</li> </ul>		

## Track

Optional Track Shoes Width	600 mm	24 in
Number of Shoes (each side)	49	
Number of Track Rollers (each side)	8	
Number of Carrier Rollers (each side)	2	

## Drive

Gradeability	35°/70%	
Maximum Travel Speed	5.7 km/h	3.5 mph
Maximum Drawbar Pull	201 kN	45,232 lbf

## Hydraulic System

Main System – Maximum Flow (Implement)	429 L/min (2 × pumps)	113 gal/min (2 × pumps)
Maximum Pressure – Equipment – Implement	35 000 kPa	5,075 psi
Maximum Pressure – Travel	35 000 kPa	5,075 psi
Maximum Pressure – Swing	27 500 kPa	3,990 psi
Boom Cylinder – Bore	120 mm	5 in
Boom Cylinder – Stroke	1260 mm	50 in
Stick Cylinder – Bore	140 mm	6 in
Stick Cylinder – Stroke	1518 mm	60 in
Bucket Cylinder – Bore	135 mm	5 in
Bucket Cylinder – Stroke	1156 mm	46 in

## Service Refill Capacities

Fuel Tank Capacity	313 L	82.7 gal
Cooling System	11.8 L	3.1 gal
Engine Oil (with filter)	15 L	4.0 gal
Swing Drive (each)	5.5 L	1.5 gal
Final Drive (each)	4.5 L	1.2 gal
Hydraulic System (including tank)	230 L	60.8 gal
Hydraulic Tank	111 L	29.3 gal
DEF Tank	26 L	6.9 gal

## Standards

Brakes	ISO 10265:2008
Cab/Operator Protective Guards (OPG) (optional)	ISO 10262:1998 Level II

## Air Conditioning System

The air conditioning system on this machine contains the fluorinated greenhouse gas refrigerant R134a (Global Warming Potential = 1430). The system contains 0.8 kg of refrigerant which has a CO<sub>2</sub> equivalent of 1.144 metric tonnes.



# 325 Tunneling Hydraulic Excavator Specifications

## Operating Weights and Ground Pressures

Base Machine Configurations	600 mm (24 in) Triple Grouser Shoes	
	Weight	Ground Pressure
	kg (lb)	kPa (psi)
<b>Base Frame with Track Rollers and Carrier Rollers</b>		
<b>4.9 mt (10,800 lb) Counterweight + Long Undercarriage Base Machine</b>		
Mass Boom + M2.4 (7'10") Stick + 0.80 m <sup>3</sup> (1.05 yd <sup>3</sup> ) XSP Bucket	25 000 kg (55,100 lb)	52 kPa (7.5 psi)
Short Reach Boom + M3.2 (10'5") Stick + 0.90 m <sup>3</sup> (1.18 yd <sup>3</sup> ) HDX Bucket	25 100 kg (55,300 lb)	52.2 kPa (7.6 psi)

All operating weights include a 90% fuel tank with 75 kg (165 lb) operator.

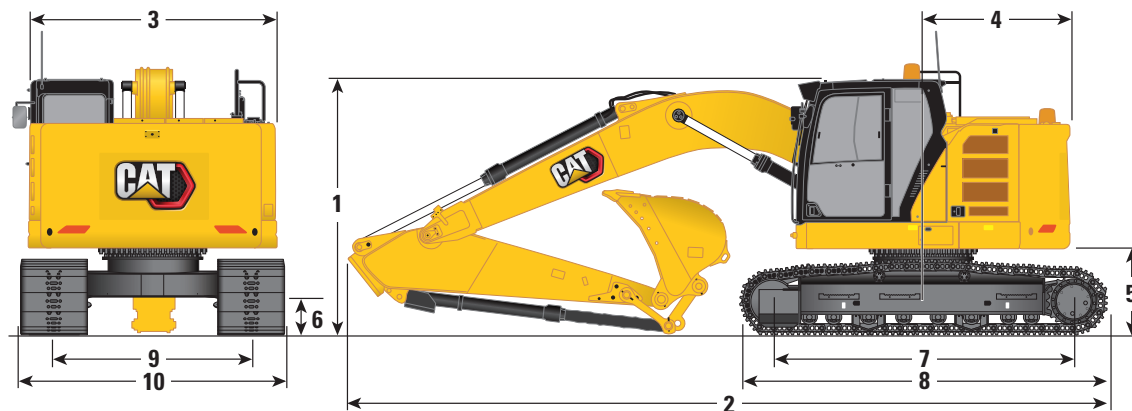
## Major Component Weights

	kg	lb
Base Machine Weight (with counterweight, upper frame, undercarriage with track rollers and two boom cylinders – does not include boom, stick, bucket, stick cylinder, bucket cylinder, tracks, 90% fuel tank and 75 kg [165 lb] operator).		
For Mass Front	17 000	37,500
For Short Reach Front	16 970	37,400
Track Shoes:		
600 mm (24") Width, 12 mm (0.49") Thick, Triple Grouser Track Shoes	3200	7,000
Two Boom Cylinders for Mass Front	360	800
Two Boom Cylinders for Short Reach Front	340	800
Weight of 90% Fuel Tank and 75 kg (165 lb) Operator	330	700
Counterweight:		
4.9 mt (10,800 lb) Counterweight	4900	10,800
Boom (including lines, pins, stick cylinder):		
Mass Boom 5.2 m (7'1")	1940	4,300
Short Reach Boom 4.25 m (13'11")	2140	4,700
Stick (including lines, pins, bucket cylinder, bucket linkage):		
Mass Stick M2.4CB2 (7'10")	1490	3,300
Short Reach Stick M3.2B1 (10'5")	1600	3,500
Bucket (without linkage, with tips and side cutters):		
0.80 m <sup>3</sup> (1.05 yd <sup>3</sup> ) XSP CB2 Linkage	1010	2,200
0.90 m <sup>3</sup> (1.18 yd <sup>3</sup> ) HDX B Linkage	850	1,900
Shovel Crane:		
Hook, Valves and Sensors	60	100
Auxiliary Lines:		
HP Lines for Mass Boom	130	300
HP Lines for Short Reach Boom	120	300
HP Lines for Mass Stick	40	100
HP Lines for Short Reach Stick	50	100
Auxiliary Valves for HP	110	200

# 325 Tunneling Hydraulic Excavator Specifications

## Dimensions

All dimensions are approximate and may vary depending on bucket selection.

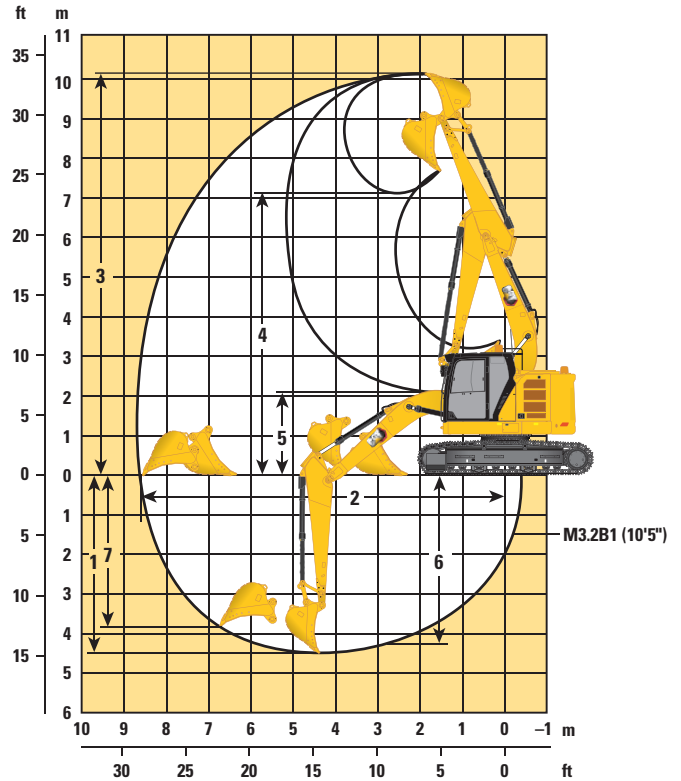
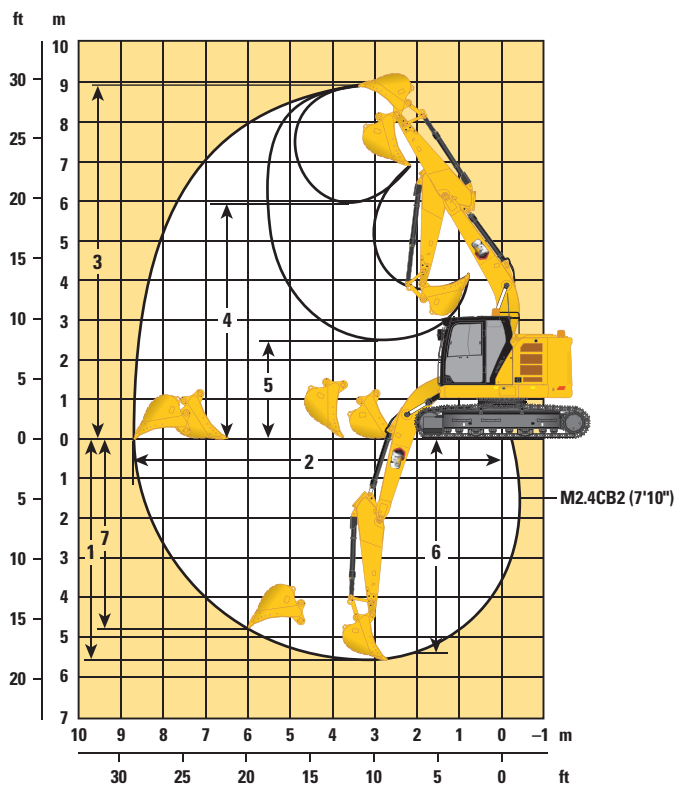


Boom Option	Mass Boom 5.2 m (17'1")		Short Reach 4.25 m (13'11")	
Stick Option	Mass Stick M2.4CB2 (7'10")		Short Reach M3.2B1 (10'5")	
1 Machine Height (excludes flash beacon):				
Top of Cab Height	3080 mm	10'1"	3080 mm	10'1"
Top of OPG Height	3220 mm	10'6"	3220 mm	10'6"
Handrail Height	3190 mm	10'5"	3190 mm	10'5"
With Boom/Stick/Bucket Installed	3320 mm	10'11"	3630 mm	11'9"
With Boom/Stick Installed	3150 mm	10'4"	3300 mm	10'8"
With Boom Installed	2740 mm	9'0"	NA	NA
2 Machine Length:				
With Boom/Stick/Bucket Installed	8540 mm	28'0"	6860 mm	22'5"
With Boom/Stick Installed	8500 mm	27'9"	6900 mm	22'6"
With Boom Installed	7270 mm	23'8"	6300 mm	20'7"
3 Upperframe Width	2990 mm	9'8"	2990 mm	9'8"
4 Tail Swing Radius	1780 mm	5'8"	1780 mm	5'8"
5 Counterweight Clearance	1020 mm	3'3"	1020 mm	3'3"
6 Ground Clearance	440 mm	1'5"	440 mm	1'5"
7 Length to Center of Rollers	3650 mm	12'0"	3650 mm	12'0"
8 Track Length	4460 mm	14'6"	4460 mm	14'6"
9 Track Gauge	2380 mm	7'9"	2380 mm	7'9"
10 Undercarriage Width:				
600 mm (24") Shoe	2980 mm	9'8"	2980 mm	9'8"
Bucket Type	XSP		XSP	
Bucket Capacity	0.80 m³	1.05 yd³	0.90 m³	1.18 yd³
Bucket Tip Radius	1577 mm	5'2"	1489 mm	4'9"

# 325 Tunneling Hydraulic Excavator Specifications

## Working Ranges and Forces

All dimensions are approximate and may vary depending on bucket selection.

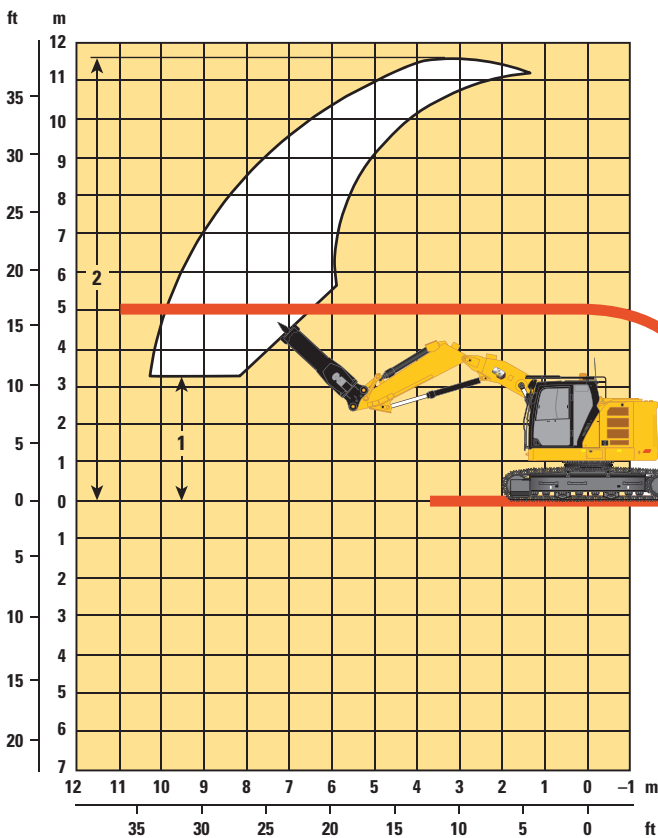


Boom Option	Mass Boom 5.2 m (17'1")		Short Reach 4.25 m (13'11")	
Stick Option	Mass Stick M2.4CB2 (7'10")		Short Reach M3.2B1 (10'5")	
1 Maximum Digging Depth	5600 mm	18'4"	4470 mm	14'7"
2 Maximum Reach at Ground Line	8760 mm	28'7"	8600 mm	28'2"
3 Maximum Cutting Height	8910 mm	29'2"	10 130 mm	33'2"
4 Maximum Loading Height	5940 mm	19'5"	7150 mm	23'5"
5 Minimum Loading Height	2490 mm	8'2"	2100 mm	6'9"
6 Maximum Depth Cut for 2440 mm (8'0") Level Bottom	5400 mm	17'7"	4310 mm	14'1"
7 Maximum Vertical Wall Digging Depth	4820 mm	15'8"	3790 mm	12'4"
Minimum Working Equipment Radius	3440 mm	11'3"	3230 mm	10'6"
Bucket Digging Force (ISO)	188 kN	42 270 lbf	175 kN	39 295 lbf
Stick Digging Force (ISO)	130 kN	29 269 lbf	88 kN	19 693 lbf
Bucket Type	XSP		XSP	
Bucket Capacity	0.80 m <sup>3</sup>	1.05 yd <sup>3</sup>	0.90 m <sup>3</sup>	1.18 yd <sup>3</sup>
Bucket Tip Radius	1577 mm	5'2"	1489 mm	4'9"

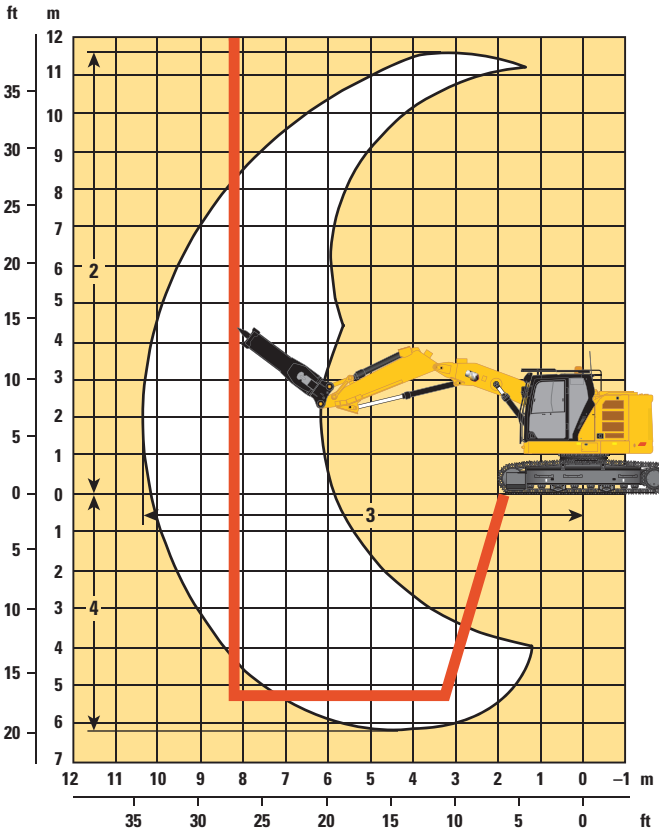
# 325 Tunneling Hydraulic Excavator Specifications

## Hammer Working Range Charts – Short Reach

All dimensions are approximate and may vary depending on hammer selection.



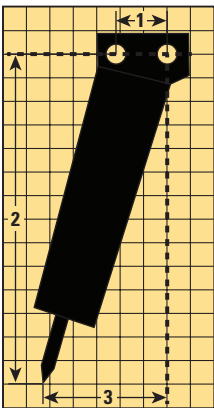
Hammer Tip Reach – Ceiling



Hammer Tip Reach – Full Reach Zone

1 Cab Height with OPG	3217 mm	10'6"
2 Maximum Upward Reach	11 550 mm	37'10"
3 Maximum Horizontal Reach	10 360 mm	33'11"
4 Maximum Downward Reach	6100 mm	20'

Note: Actual reach zones will vary depending on hammer dimensions.



### Hammer Dimensions

1 Pin Spread	445.1 mm	1'5"
2 Vertical Offset from Stick Nose Pin	2751.4 mm	9'
3 Horizontal Offset from Stick Nose Pin	1050.7 mm	3'5"

# 325 Tunneling Hydraulic Excavator Specifications

## Bucket Specifications and Compatibility

	Linkage	Width		Capacity		Weight		Fill	4.9 mt (10,800 lb) Counterweight	
		mm	in	m³	yd³	kg	lb	%	Mass Boom	Short Reach Boom
									M2.4 (7'10")	M3.2 (10'5")
Pin On (No Coupler)										
Heavy Duty Excavation	CB	1060	42	0.80	1.00	1013	2,233	100	●	
	B	1050	41	0.90	1.18	850	1,874	100		●
Maximum load with pin-on (payload + bucket)								kg	3098	2810
								lb	6,830	6,195

The above loads are in compliance with hydraulic excavator standard EN474-5:2006 + A3:2013, they do not exceed 87% of hydraulic lifting capacity or 75% of tipping capacity with front linkage fully extended at ground line with bucket curled.

Capacity based on ISO 7451:2007.

Bucket weight with General Duty tips.

### Maximum Material Density:

● 2100 kg/m<sup>3</sup> (3,500 lb/yd<sup>3</sup>)

Caterpillar recommends using appropriate work tools to maximize the value customers receive from our products. Use of work tools, including buckets, which are outside of Caterpillar's recommendations or specifications for weight, dimensions, flows, pressures, etc. may result in less-than-optimal performance, including but not limited to reductions in production, stability, reliability, and component durability. Improper use of a work tool resulting in sweeping, prying, twisting and/or catching of heavy loads will reduce the life of the boom and stick.

## Attachments Offering Guide

Not all Attachments are available in all regions. Consult your Cat dealer for configurations available in your region.

☒ Match ☐ No Match

### PIN-ON ATTACHMENTS

Counterweight			4.9 mt (10,800 lb)	
Boom Type			Mass	Short Reach
Stick Length			M2.4CB2 (7'10")	M3.2B1 (10'5")
Hydraulic Hammers	H120 S		✓	✓
	H130 S		✓	✓
	H140 S		✓	
Rotary Cutters	RC20		✓	✓
	RC30		✓	✓

### CAT PIN GRABBER COUPLER ATTACHMENTS

Counterweight			4.9 mt (10,800 lb)	
Boom Type			Mass	Short Reach
Stick Length			M2.4CB2 (7'10")	M3.2B1 (10'5")
Hydraulic Hammers	H120 S		✓	✓
	H130 S		✓	✓
Rotary Cutters	RC20		✓	✓

# 325 Tunneling Standard and Optional Equipment

## Standard and Optional Equipment

Standard and optional equipment may vary. Consult your Cat dealer for details.

	Standard	Optional		Standard	Optional
<b>CAB</b>			<b>TECHNOLOGY</b>		
High-resolution 203 mm (8") LCD touch screen monitor	✓		VisionLink	✓*	
High-resolution 254 mm (10") LCD touch screen monitor		✓	VisionLink Productivity		✓
Automatic bi-level air conditioner	✓		Remote Flash	✓	
Jog dial and shortcut keys for monitor control	✓		Remote Troubleshoot	✓	
Keyless push-to-start engine control	✓		Work tool recognition (PL161)	✓	
Height-adjustable console	✓		<b>ENGINE</b>		
Fixed left-side console	✓		Cat® C4.4 single turbo diesel engine	✓	
Mechanical-suspension seat	✓		Three selectable modes: Power, Smart, Eco	✓	
51 mm (2") seat belt	✓		4500 m (14,760 ft) altitude capability with engine power derate above 3000 m (9,840 ft)	✓	
Cab and machine harness connectors sealed with silicone	✓		50° C (122° F) high-ambient cooling capacity without derate	✓	
Flash light harness	✓		-18° C (0° F) cold start capability	✓	
12V DC outlets	✓		-32° C (-25° F) cold start capability		✓
Document storage	✓		Sealed double element air filter with integrated precleaner	✓	
Beverage holder	✓		1 × 145 amp dual alternator	✓	
Cup holder	✓		Electric fuel priming pump	✓	
Lunch box storage	✓		Reversible electric cooling fans	✓	
LED dome light	✓		Two-stage fuel filtration system with water separator and indicator	✓	
Openable two-piece front window	✓		<b>HYDRAULIC SYSTEM</b>		
Radial wiper with washer	✓		Electric main control valve	✓	
Openable steel hatch	✓		Tool control with selectable one or two way and one or two pumps	✓	
OPG installation capability	✓		Boom and stick regeneration circuits	✓	
Roller front sunscreen	✓		Automatic hydraulic oil warm up	✓	
Rear window emergency exit	✓		Automatic two-speed travel	✓	
Washable floor mat	✓		Boom and stick drift reduction valve	✓	
Beacon ready	✓		Tandem type electronic main pump	✓	
			Element type main hydraulic filter	✓	
			Hammer return filter	✓	
			High pressure tool control lines	✓	

\*Connect subscription only. Additional subscriptions are available. Contact your Cat dealer for availability.

(continued on next page)

# 325 Tunneling Standard and Optional Equipment

## Standard and Optional Equipment *(continued)*

Standard and optional equipment may vary. Consult your Cat dealer for details.

	Standard	Optional		Standard	Optional
<b>UNDERCARRIAGE AND STRUCTURES</b>			<b>SERVICE AND MAINTENANCE</b>		
Reinforced long base frame for tunneling, with standard track rollers and standard carrier rollers	✓		Scheduled Oil Sampling (S·O·S <sup>SM</sup> ) ports	✓	
Tie-down points on base frame	✓		Grouped location for engine oil and fuel filters	✓	
Grease lubricated track	✓		Ground-level second dipstick for engine oil	✓	
Segmented track guiding guards	✓		<b>SAFETY AND SECURITY</b>		
HD bottom guards	✓		Rear and right-hand-sideview cameras for tunneling	✓	
HD travel motor guards	✓		360° visibility for tunneling**		✓
4.9 mt (10,800 lb) counterweight	✓		360° visibility for OPG, for tunneling***		✓
600 mm (24") triple grouser track shoes	✓		Right-hand handrail and hand hold	✓	
Reinforced 325 upper frame for tunneling	✓		Service platform with anti-skid plate and countersunk bolts	✓	
<b>BOOMS, STICKS AND LINKAGES</b>			Hydraulic lock out lever neutralizes all controls	✓	
5.2 m (7'1") Mass boom		✓	Secondary engine shutoff switch in cab	✓	
2.4 m (7'10") Mass stick		✓	Signaling/warning horn	✓	
4.25 m (13'11") Short Reach boom		✓	Shovel crane package		✓
3.2 m (10'5") Mass stick		✓	Flash beacon on counterweight	✓	
Bucket linkage, CB2 family with lifting hook for Mass boom		✓	Lockable disconnect switch	✓	
<b>ELECTRICAL SYSTEM</b>					
LED chassis light, left-hand/right-hand boom lights, cab lights – 1,800 lumens	✓				
Centralized electrical disconnect switch	✓				
Programmable time delay working lights after engine shutdown	✓				
Premium surround lighting package		✓			

\*\*Must be used with 254 mm (10") monitor and cab light with cover.

\*\*\*Must be used with OPG guard, 254 mm (10") monitor and cab light with cover.

# 325 Tunneling Attachments

## Dealer Installed Kits and Attachments

Attachments may vary. Consult your Cat dealer for details.

<b>CAB</b> <ul style="list-style-type: none"><li>• Rain protector plus cab light cover</li><li>• Polycarbonate roof hatch</li><li>• Sun visor, slider</li><li>• Laminated P5A glass front windshield</li><li>• LH/RH electrical pedal for tool control</li><li>• Armrest kit</li><li>• Seat with 4-point seatbelt capability</li><li>• Dual exit rear window kit</li><li>• 75 mm (3") retractable seat belt</li><li>• Auxiliary relay</li></ul>	<b>GUARDS</b> <ul style="list-style-type: none"><li>• Operator Protective Guards</li><li>• Mesh guard full front</li><li>• Mesh guard half front</li><li>• Full protecting vandalism guard</li></ul> <b>MAINTENANCE</b> <ul style="list-style-type: none"><li>• Dust hose kit</li></ul>	<b>SAFETY AND SECURITY</b> <ul style="list-style-type: none"><li>• Remote control kit</li><li>• Seat belt indicator</li><li>• Bluetooth key fob</li></ul> <b>OTHER ATTACHMENTS</b> <ul style="list-style-type: none"><li>• Delayed engine shutdown kit</li><li>• Power clam kit</li></ul>
---	---	---

For more complete information on Cat products, dealer services, and industry solutions, visit us on the web at [www.cat.com](http://www.cat.com)

© 2023 Caterpillar  
All rights reserved

Materials and specifications are subject to change without notice. Featured machines in photos may include additional equipment. See your Cat dealer for available options.

CAT, CATERPILLAR, LET'S DO THE WORK, their respective logos, "Caterpillar Corporate Yellow," the "Power Edge" and Cat "Modern Hex" trade dress as well as corporate and product identity used herein, are trademarks of Caterpillar and may not be used without permission. VisionLink is a trademark of Caterpillar Inc., registered in the United States and in other countries.

Based on the Labor, Safety and Health Laws in Japan, employer of small construction equipment are required to provide specific training for all operators on machines with machine weight less than 3 metric ton. For machines greater than 3 metric ton, operator needs to obtain operator license certification from a Government approved registered training school.

AEXQ2733-06 (10-2023)  
Replaces AEXQ2733-05  
Build Number: 07E  
(Japan)

