



330

Hydraulic Excavator

Technical Specifications

Configurations and features may vary by region. Please consult your Cat® dealer for availability in your area.

Table of Contents

Specifications	2
Engine	2
Swing Mechanism	2
Weights	2
Track	2
Drive	2
Hydraulic System	2
Service Refill Capacities	2
Standards	2
Sound Performance	2
Operating Weights and Ground Pressures	3
Major Component Weights	3
Dimensions	4
Working Ranges and Forces	5
Bucket Specifications and Compatibility	6
Attachments Offering Guide	7
Standard and Optional Equipment	8
Dealer Installed Kits and Attachments	10
Cab Options	11
330 Environmental Declaration	12

330 Hydraulic Excavator Specifications

Engine

Engine Model	Cat® C7.1	
Net Power		
ISO 9249	223.8 kW	300 hp
ISO 9249 (DIN)	304 hp (metric)	
Engine Power		
ISO 14396	225 kW	302 hp
ISO 14396 (DIN)	306 hp (metric)	
Bore	105 mm	4 in
Stroke	135 mm	5 in
Displacement	7.01 L	428 in ³
Biodiesel Capability	Up to B20 ⁽¹⁾	

- Meets China Nonroad Stage IV emission standards.
- Recommended for use up to 4500 m (14,760 ft) altitude with engine power derate above 3000 m (9,840 ft).
- Advertised power is tested per the specified standard in effect at the time of manufacture.
- Net power advertised is the power available at the flywheel when the engine is equipped with fan, air intake system, exhaust system and alternator.
- Engine speed at 2,000 rpm.

⁽¹⁾Cat diesel engines are required to use ULSD (ultra-low sulfur diesel fuel with 15 ppm of sulfur or less) or ULSD blended with the following lower-carbon intensity fuels** up to:

- ✓ 20% biodiesel FAME (fatty acid methyl ester)*
- ✓ 100% renewable diesel, HVO (hydrogenated vegetable oil) and GTL (gas-to-liquid) fuels

Refer to guidelines for successful application. Please consult your Cat dealer or “Caterpillar Machine Fluids Recommendations” (SEBU6250) for details.

*Engines with no aftertreatment devices can use higher blends, up to 100% biodiesel (for use of blends higher than 20% biodiesel, consult your Cat dealer).

**Tailpipe greenhouse gas emissions from lower-carbon intensity fuels are essentially the same as traditional fuels.

Swing Mechanism

Swing Speed	11.5 rpm	
Maximum Torque	110 kN·m	81,132 lb-ft

Weights

Operating Weight	30 800 kg	67,900 lb
------------------	-----------	-----------

- HD Long undercarriage, HD Reach boom, HD R3.2 m (10'6") stick, Heavy Duty (HD) 1.80 m³ (2.35 yd³) bucket, 600 mm (24") triple grouser shoes and 6700 kg (14,770 lb) counterweight.

Operating Weight	31 100 kg	68,600 lb
------------------	-----------	-----------

- HD Long undercarriage, HD Reach boom, HD R3.2 m (10'6") stick, HD 1.80 m³ (2.35 yd³) bucket, 600 mm (24") double grouser shoes and 6700 kg (14,770 lb) counterweight.

Track

Standard Track Shoes Width	600 mm	24 in
Optional Track Shoes Width	800 mm	31 in
Number of Shoes (each side)	50	
Number of Track Rollers (each side)	9	
Number of Carrier Rollers (each side)	2	

Drive

Gradeability	35°/70%	
Maximum Travel Speed	5.3 km/h	3.3 mph
Maximum Drawbar Pull	248 kN	55,753 lbf

Hydraulic System

Main System – Maximum Flow – Implement	560 L/min (280 × 2 pumps)	148 gal/min (74 × 2 pumps)
Maximum Pressure – Equipment – Normal	35 000 kPa	5,075 psi
Maximum Pressure – Equipment – Heavy Lift Mode/Auto Dig Boost	38 000 kPa	5,510 psi
Maximum Pressure – Travel	35 000 kPa	5,075 psi
Maximum Pressure – Swing	29 800 kPa	4,320 psi
Boom Cylinder – Bore	140 mm	6 in
Boom Cylinder – Stroke	1407 mm	55 in
Stick Cylinder – Bore	150 mm	6 in
Stick Cylinder – Stroke	1646 mm	65 in
Bucket Cylinder – Bore	135 mm	5 in
Bucket Cylinder – Stroke	1156 mm	46 in

Service Refill Capacities

Fuel Tank Capacity	474 L	125.2 gal
Cooling System	25 L	6.6 gal
Engine Oil	25 L	6.6 gal
Swing Drive	10 L	2.6 gal
Final Drive (each)	5.5 L	1.5 gal
Hydraulic System (including tank)	310 L	81.9 gal
Hydraulic Tank	147 L	38.8 gal
Diesel Exhaust Fluid (DEF) Tank	41 L	10.8 gal

Standards

Brakes	ISO 10265:2008
Cab/Rollover Protective Structure (ROPS)	ISO 12117-2:2008
Cab/Operator Protective Guards (OPG)	ISO 10262:1998 Level II

Sound Performance

GB/T 25614-2010 (external)	103 dB(A)
GB/T 25615-2010 (inside cab)	70 dB(A)

- Hearing protection may be needed when operating with an open operator station and cab (when not properly maintained or doors/windows open) for extended periods or in a noisy environment.

330 Hydraulic Excavator Specifications

Operating Weights and Ground Pressures

	600 mm (24") Triple Grouser Shoes		600 mm (24") Double Grouser Shoes		800 mm (31") Triple Grouser Shoes	
	Weight	Ground Pressure	Weight	Ground Pressure	Weight	Ground Pressure
	kg (lb)	kPa (psi)	kg (lb)	kPa (psi)	kg (lb)	kPa (psi)
Base Machine Configurations						
Base Frame with Track Rollers and Carrier Rollers						
6700 kg (14,770 lb) Counterweight and HD Long Undercarriage Base Machine						
HD Reach Boom + HD R3.2CB2 (10'6") Stick + 1.80 m ³ (2.35 yd ³) HD Bucket	30 800 (67,900)	59 (8.5)	31 100 (68,600)	59 (8.5)	31 700 (69,900)	45 (6.5)

All operating weights include a 90% fuel tank with 75 kg (165 lb) operator.

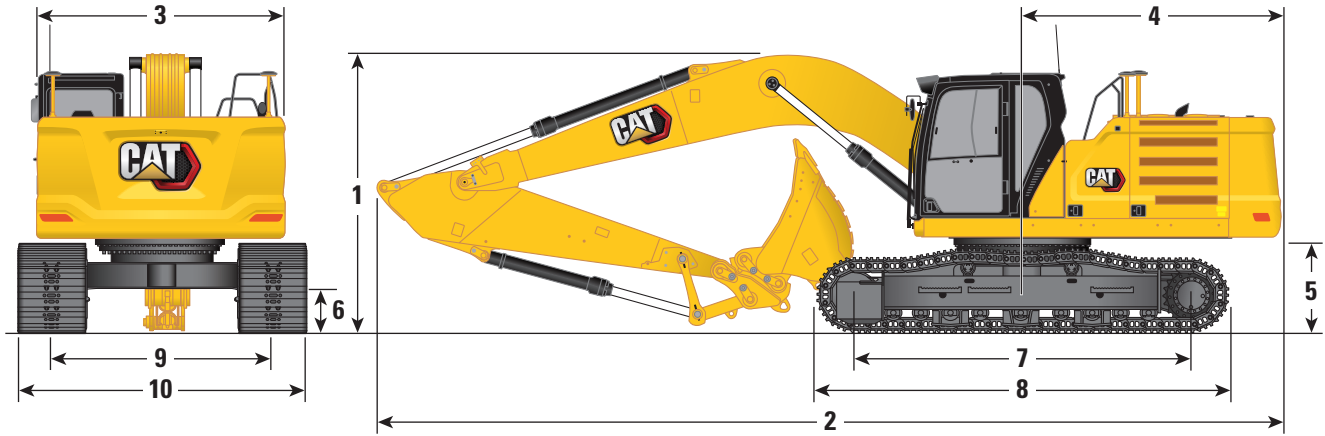
Major Component Weights

	kg	lb
Base Machine Weight with 6700 kg (14,770 lb) counterweight, upper frame, HD long undercarriage with HD track rollers and two boom cylinders – does not include boom, stick, bucket, stick cylinder, bucket cylinders, tracks, fuel tank and operator.	21 210	46,700
Track Shoes:		
600 mm (24") Width, 11 mm (0.43") Thick, Triple Grouser Track Shoes	3620	7,980
600 mm (24") Width, 14.5 mm (0.57") Thick, Double Grouser Track Shoes	3960	8,730
800 mm (31") Width, 13 mm (0.51") Thick, Triple Grouser Track Shoes with Step Extension	4590	10,120
Two Boom Cylinders	490	1,080
Weight of 90% Fuel Tank and 75 kg (165 lb) Operator	460	1,010
Counterweight:		
6700 kg (14,770 lb) Counterweight	6700	14,770
Undercarriage:		
HD Long Undercarriage with HD Rollers	6700	14,800
Boom (including lines, pins, stick cylinder):		
HD Reach Boom 6.15 m (20'2")	2420	5,340
Sticks (including lines, pins, bucket cylinder, bucket linkage):		
HD Reach Stick R3.2CB2 (10'6")	1660	3,700
HD Reach Stick R2.65CB2 (8'8")	1440	3,200
Buckets (without linkage, with tips and sidecutters):		
1.80 m ³ (2.35 yd ³) HD, CB Linkage	1390	3,100
1.60 m ³ (2.09 yd ³) HD, CB Linkage	1320	2,910
1.54 m ³ (2.01 yd ³) HD, CB Linkage	1130	2,500
1.57 m ³ (2.05 yd ³) HD, CB2 Linkage	1330	2,900
1.54 m ³ (2.01 yd ³) Severe Duty (SD), CB Linkage	1500	3,310
Quick Couplers (QC):		
Pin Grabber QC CB with Pins	530	1,170
Pin Grabber QC CB without Pins	500	1,100

330 Hydraulic Excavator Specifications

Dimensions

All dimensions are approximate and may vary depending on bucket selection.



Boom Option

**HD Reach Boom
6.15 m (20'2")**

Stick Options

HD Reach Stick

R3.2CB2 (10'6")

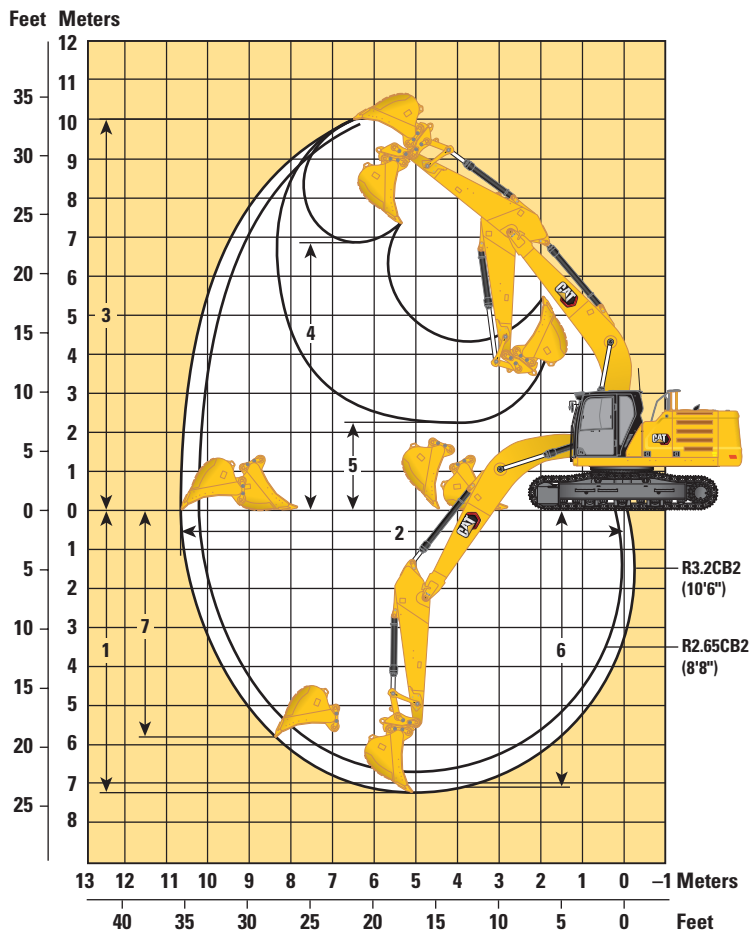
R2.65CB2 (8'8")

	R3.2CB2 (10'6")		R2.65CB2 (8'8")	
1 Machine Height:				
Cab Height	3060 mm	10'0"	3060 mm	10'0"
OPG Height	3200 mm	10'6"	3200 mm	10'6"
Handrail Height	3060 mm	10'0"	3060 mm	10'0"
With Boom/Stick/Bucket Installed	3400 mm	11'2"	3450 mm	11'4"
With Boom/Stick Installed	3380 mm	11'1"	3380 mm	11'1"
With Boom Installed	3060 mm	10'0"	3060 mm	10'0"
2 Machine Length:				
With Boom/Stick/Bucket Installed	10 420 mm	34'2"	10 420 mm	34'2"
With Boom/Stick Installed	10 420 mm	34'2"	10 420 mm	34'2"
With Boom Installed	9230 mm	30'3"	9230 mm	30'3"
3 Upperframe Width	2940 mm	9'8"	2940 mm	9'8"
4 Tail Swing Radius	3130 mm	10'3"	3130 mm	10'3"
5 Counterweight Clearance	1120 mm	3'8"	1120 mm	3'8"
6 Ground Clearance	490 mm	1'7"	490 mm	1'7"
7 Length to Center of Rollers	3990 mm	13'1"	3990 mm	13'1"
8 Track Length	4860 mm	15'11"	4860 mm	15'11"
9 Track Gauge	2590 mm	8'6"	2590 mm	8'6"
10 Undercarriage Width				
600 mm (24") Shoes	3190 mm	10'6"	3190 mm	10'6"
800 mm (31") Shoes	3390 mm	11'1"	3390 mm	11'1"
Bucket Type	HD		HD	
Bucket Capacity	1.80 m ³	2.35 yd ³	1.80 m ³	2.35 yd ³
Bucket Tip Radius	1662 mm	5'5"	1662 mm	5'5"

330 Hydraulic Excavator Specifications

Working Ranges and Forces

All dimensions are approximate and may vary depending on bucket selection.



Boom Option

**HD Reach Boom
6.15 m (20'2")**

Stick Options

HD Reach Stick

	R3.2CB2 (10'6")		R2.65CB2 (8'8")	
	mm	ft/in	mm	ft/in
1 Maximum Digging Depth	7250 mm	23'9"	6700 mm	22'0"
2 Maximum Reach at Ground Line	10 690 mm	35'1"	10 210 mm	33'6"
3 Maximum Cutting Height	10 000 mm	32'10"	9890 mm	32'5"
4 Maximum Loading Height	6940 mm	22'9"	6800 mm	22'4"
5 Minimum Loading Height	2290 mm	7'6"	2840 mm	9'4"
6 Maximum Depth Cut for 2440 mm (8 ft) Level Bottom	7090 mm	23'3"	6520 mm	21'5"
7 Maximum Vertical Wall Digging Depth	5790 mm	19'0"	5490 mm	18'0"
Bucket Digging Force (ISO)	179 kN	40,240 lbf	179 kN	40,240 lbf
Stick Digging Force (ISO)	126 kN	28,330 lbf	145 kN	32,600 lbf
Bucket Digging Force (ISO) – Auto Dig Boost	189 kN	42,477 lbf	189 kN	42,477 lbf
Stick Digging Force (ISO) – Auto Dig Boost	133 kN	29,900 lbf	153 kN	34,408 lbf
Bucket Type	HD		HD	
Bucket Capacity	1.80 m ³	2.35 yd ³	1.80 m ³	2.35 yd ³
Bucket Tip Radius	1662 mm	5'5"	1662 mm	5'5"

330 Hydraulic Excavator Specifications

Bucket Specifications and Compatibility

	Linkage	Width		Capacity		Weight		Fill %	HD Reach Boom	
		mm	in	m ³	yd ³	kg	lb		HD R3.2CB2 (10'6")	HD R2.65CB2 (8'8")
Pin-On (No Quick Coupler)										
General Duty	CB	1400	55	1.54	2.02	1125	2,480	100	●	●
Heavy Duty	CB	1300	51	1.36	1.78	1173	2,587	100	●	●
	CB	1350	53	1.45	1.90	1194	2,633	100	●	●
	CB	1450	57	1.57	2.05	1280	2,822	100	⊙	●
	CB	1450	57	1.60	2.09	1274	2,809	100	⊙	●
	CB	1500	60	1.65	2.16	1308	2,884	100	⊙	●
	CB	1600	63	1.80	2.35	1348	2,973	100	⊖	⊙
	CB	1650	66	1.90	2.49	1369	3,019	100	⊖	⊙
Severe Duty	CB	1750	69	2.00	2.62	1397	3,081	100	⊖	⊙
	CB	1300	51	1.36	1.78	1321	2,911	90	●	●
	CB	1350	54	1.45	1.90	1346	2,967	90	●	●
Maximum load with pin-on (payload + bucket)								kg	4370	4880
								lb	9,634	10,759
With Pin Grabber Quick Coupler										
General Duty	CB	1400	55	1.54	2.02	1125	2,480	100	⊙	●
Heavy Duty	CB	1300	51	1.36	1.78	1173	2,587	100	⊙	●
	CB	1350	53	1.45	1.90	1194	2,633	100	⊙	●
	CB	1450	57	1.57	2.05	1280	2,822	100	⊖	⊙
	CB	1450	57	1.60	2.09	1274	2,809	100	⊖	⊙
	CB	1500	60	1.65	2.16	1308	2,884	100	⊖	⊙
	CB	1600	63	1.80	2.35	1348	2,973	100	○	⊖
	CB	1650	66	1.90	2.49	1369	3,019	100	○	⊖
Severe Duty	CB	1750	69	2.00	2.62	1397	3,081	100	○	⊖
	CB	1300	51	1.36	1.78	1321	2,911	90	●	●
	CB	1350	54	1.45	1.90	1346	2,967	90	⊙	●
Maximum load with coupler (payload + bucket)								kg	3844	4354
								lb	8,474	9,598

The above loads are in compliance with hydraulic excavator standard EN474-5:2006+A3:2013, they do not exceed 87% of hydraulic lifting capacity or 75% of tipping capacity with front linkage fully extended at ground line with bucket curled.

Capacity based on ISO 7451:2007.

Bucket weight with General Duty tips.

Maximum Material Density:

- 2100 kg/m³ (3,500 lb/yd³)
- ⊙ 1800 kg/m³ (3,000 lb/yd³)
- ⊖ 1500 kg/m³ (2,500 lb/yd³)
- 1200 kg/m³ (2,000 lb/yd³)

Caterpillar recommends using appropriate work tools to maximize the value customers receive from our products. Use of work tools, including buckets, which are outside of Caterpillar's recommendations or specifications for weight, dimensions, flows, pressures, etc. may result in less-than-optimal performance, including but not limited to reductions in production, stability, reliability, and component durability. Improper use of a work tool resulting in sweeping, prying, twisting and/or catching of heavy loads will reduce the life of the boom and stick.

330 Hydraulic Excavator Specifications

Attachments Offering Guide

Not all Attachments are available in all regions. Consult your Cat dealer for configurations available in your region.

Match

* Working range front only

PIN-ON ATTACHMENTS

Boom Type	Stick Lengths	Reach HD	
		HD R2.65 (8'8")	HD R3.2 (10'6")
Hydraulic Hammers	H120 S	✓	✓
	H130 GC	✓	✓
	H130 GC Side Mount	✓	✓
	H130 GC S	✓	✓
	H130 S	✓	✓
	H140 GC	✓	✓
	H140 GC S	✓	✓
	H155 Side Mount	✓	✓
	H160 GC	✓	✓
	H160 GC S	✓	✓
	Compactors (Vibratory Plate)	CVP110	✓

330 Standard and Optional Equipment

Standard and Optional Equipment

Standard and optional equipment may vary. Consult your Cat dealer for details.

	Standard	Optional		Standard	Optional
CAT TECHNOLOGY			ENGINE		
Remote Flash	✓		Cat® C7.1 twin turbo diesel engine	✓	
Remote Troubleshoot	✓		Three selectable modes: Power, Smart, Eco	✓	
Compatibility with radios and base stations from Trimble, Topcon, and Leica	✓		Automatic engine speed control	✓	
Capability to install 3D grade systems from Trimble, Topcon, and Leica	✓		Auto engine idle-shutdown	✓	
Cat Grade 2D ⁽¹⁾	✓		4500 m (14,760 ft) altitude capability with engine power derate above 3000 m (9,840 ft)	✓	
Cat Grade 2D with Attachment Ready Option (ARO)		✓	50° C (122° F) high-ambient cooling capability with derate	✓	
Cat Grade 3D single GNSS		✓	-18° C (0° F) cold start capability	✓	
Cat Grade 3D dual GNSS		✓	-32° C (-25° F) cold start capability		✓
Laser catcher		✓	Cold start block heaters		✓
Cat Assist: ⁽¹⁾	✓		2 × 115 amp dual alternator	✓	
– Grade Assist			Sealed double element air filter with integrated pre-cleaner	✓	
– Boom Assist			Two-stage fuel filtration with water separator and indicator	✓	
– Bucket Assist			Electric fuel priming pump	✓	
– Swing Assist			Electric cooling fans with auto-reverse function	✓	
– Lift Assist			HYDRAULIC SYSTEM		
Cat Payload: ⁽¹⁾	✓		Electronic main control valve	✓	
– Static weigh			Electric boom regeneration circuit	✓	
– Semiautomatic calibration			Stick regeneration circuit	✓	
– Payload/cycle information			Automatic hydraulic oil warm up	✓	
– USB reporting capability			Automatic two-speed travel	✓	
Work tool recognition (PL161) ⁽²⁾	✓		Boom and stick drift reduction valve	✓	
Work tool tracking (PL161) ⁽²⁾	✓		Auto Dig Boost ⁽³⁾	✓	
Cat Tilt Rotator (TRS) Integration		✓	Auto heavy lift ⁽³⁾	✓	
Operator Coaching		✓	Hydraulic efficiency monitoring		✓
			High performance hydraulic return filter	✓	
			Final drive with bio hydraulic oil capable travel motor	✓	
			Hammer return filter circuit		✓
			Tool Control (two pump, one/two way high-pressure flow)		✓
			Basic Tool Control (one pump, one way high-pressure flow)		✓
			Common Quick Coupler Circuit for Cat Pin Grabber and CW Dedicated		✓

⁽¹⁾Optional on machines equipped with a Super Long Reach boom and stick.

⁽²⁾Requires PL161 attachment locator on work tool and Bluetooth® receiver on machine.

⁽³⁾Requires heavy lift valve; not available for Super Long Reach

(continued on next page)

Standard and Optional Equipment (continued)

Standard and optional equipment may vary. Consult your Cat dealer for details.

	Standard	Optional		Standard	Optional
BOOM, STICKS AND LINKAGE			SERVICE AND MAINTENANCE		
6.15 m (20'2") HD Reach boom	✓		Grouped location of engine oil and fuel filters	✓	
3.2 m (10'6") HD Reach stick		✓	Ground-level second dipstick for engine oil	✓	
2.65 m (8'8") HD Reach stick		✓	Side entry to service platform	✓	
Bucket Linkage, CB2 family, Cat Grade	✓		Scheduled Oil Sampling (S·O·S SM) ports	✓	
UNDERCARRIAGE AND STRUCTURES			Electric refueling pump with automatic shutoff		✓
Full-length track guiding guards		✓	Radiator screen		✓
Segmented track guiding guards		✓	Integrated vehicle health management system	✓	
Swivel guard		✓	SAFETY AND SECURITY		
Bottom guard		✓	2D E-Fence: ⁽¹⁾	✓	
HD bottom guard		✓	– E-ceiling		
Travel motor guard		✓	– E-floor		
HD travel motor guard		✓	– E-swing		
Grease lubricated track	✓		– E-wall		
Swing drive and motor, and swing bearing for higher swing torque	✓		– E-cab avoidance		
HD base frame with HD rollers	✓		Auto hammer stop	✓	
Tie-down points on base frame	✓		Rearview camera and right-side mirror	✓	
6700 kg (14,770 lb) counterweight	✓		Right-hand-sideview camera		✓
600 mm (24") triple grouser track shoes		✓	360° Visibility		✓
600 mm (24") double grouser track shoes		✓	Secure start with PIN code	✓	
800 mm (31") triple grouser track shoes		✓	Caterpillar One Key security system	✓	
ELECTRICAL SYSTEM			Lockable external tool/storage box	✓	
Maintenance-free 1,000 CCA batteries (×2)	✓		Lockable door, fuel, and hydraulic tank locks	✓	
Programmable time-delay LED working lights	✓		Lockable fuel drain compartment	✓	
Centralized electrical disconnect switch	✓		Service platform with anti-skid plate and recessed bolts	✓	
LED chassis light, Left Hand (LH) and Right Hand (RH) boom lights, cab lights	✓		RH handrail and hand hold	✓	
Premium surround lighting package		✓	Signaling/warning horn	✓	
			Ground-level secondary engine shutoff switch in cab	✓	
			Hydraulic lock out lever that neutralizes all controls	✓	
			Lockable disconnect switch	✓	
			Travel alarm		✓
			Swing alarm		✓
			Inspection lighting		✓

Dealer Installed Kits and Attachments

Attachments may vary. Consult your Cat dealer for details.

CAB

- RH electrical pedal (two-way) for tool control
- Radial lower wiper for two piece (70/30) windshield, with washer
- Polycarbonate skylight hatch (for comfort cab only)
- Rain protector plus cab light cover
- 75 m (3") retractable seat belt

SAFETY AND SECURITY

- Cat Detect – People Detection
- Seat belt indicator
- Bluetooth® receiver
- Bluetooth key fob

GUARDS

- Side rubber bumper guard
- Operator Protective Guards (not compatible with cab light cover, rain protector)
- Mesh guard full front (not compatible with cab light cover, rain protector)
- Mesh guard lower half front
- Full protecting vandalism guard (not compatible with cab light cover, rain protector)

SERVICE AND MAINTENANCE

- Grease gun holder

Cab Options

	Comfort	Deluxe
ROPS	●	●
High-resolution 203 mm (8") LCD touchscreen monitor	●	●
High-resolution 254 mm (10") LCD touchscreen monitor	○	○
Auto bi-level air conditioner	●	●
Jog dial and shortcut keys for monitor control	●	●
Keyless push-to-start engine control	●	●
Height-adjustable console, three steps with tool	●	X
Height-adjustable console, infinite with no tool	X	●
Fixed left-side console	●	X
Tilt-up left-side console	X	●
Mechanical-suspension seat	●	X
Heated air-suspension seat	X	●
51 mm (2") seat belt	●	●
Monitor integrated Bluetooth radio with USB/Auxiliary ports	●	●
12V DC outlets	●	●
Document storage	●	●
Overhead storage and rear storage with nets	X	●
Beverage holder	●	●
Cup holder	●	●
Openable two-piece front window	●	●
Rear window emergency exit	●	●
Upper radial wiper with washer	●	●
Openable steel hatch	●	X
Openable polycarbonate skylight hatch	X	●
LED dome lights	●	●
Floor welcome light	●	●
Roller front sunscreen	●	●
Roller rear sunscreen	○	○
Washable floor mat	●	●
Beacon ready	●	●
Cat Stick Steer	○	○
Auxiliary relay	X	○

● Standard

○ Optional

X Not Available

330 Environmental Declaration

The following information applies to the machine at the time of final manufacture as configured for sale in the regions covered in this document. The content of this declaration is valid as of the date issued; however, content related to machine features and specifications are subject to change without notice. For additional information, please see the machine's Operation and Maintenance Manual.

For more information on sustainability in action and our progress, please visit <https://www.caterpillar.com/en/company/sustainability>.

Engine

- The 330 meets China Nonroad Stage IV emission standards.
- Cat diesel engines are required to use ULSD (ultra-low sulfur diesel fuel with 15 ppm of sulfur or less) or ULSD blended with the following lower-carbon intensity fuels** up to:
 - ✓ 20% biodiesel FAME (fatty acid methyl ester)*
 - ✓ 100% renewable diesel, HVO (hydrogenated vegetable oil) and GTL (gas-to-liquid) fuels

Refer to guidelines for successful application. Please consult your Cat dealer or "Caterpillar Machine Fluids Recommendations" (SEBU6250) for details.

**Engines with no aftertreatment devices can use higher blends, up to 100% biodiesel (for use of blends higher than 20% biodiesel, consult your Cat dealer).*

***Tailpipe greenhouse gas emissions from lower-carbon intensity fuels are essentially the same as traditional fuels.*

Air Conditioning System

- The air conditioning system on this machine contains the fluorinated greenhouse gas refrigerant R134a (Global Warming Potential = 1430). The system contains 0.85 kg (1.9 lb) of refrigerant which has a CO₂ equivalent of 1.216 metric tonnes (1.340 tons).

Paint

- Based on best available knowledge, the maximum allowable concentration, measured in parts per million (PPM), of the following heavy metals in paint are:
 - Barium < 0.01%
 - Cadmium < 0.01%
 - Chromium < 0.01%
 - Lead < 0.01%

Sound Performance

GB/T 25614-2010 (external)	103 dB(A)
GB/T 25615-2010 (inside cab)	70 dB(A)

- Hearing protection may be needed when operating with an open operator station and cab (when not properly maintained or doors/windows open) for extended periods or in a noisy environment.

Oils and Fluids

- Caterpillar factory fills with ethylene glycol coolants. Cat Diesel Engine Antifreeze/Coolant (DEAC) and Cat Extended Life Coolant (ELC) can be recycled. Consult your Cat dealer for more information.
- Cat Bio HYDO™ Advanced is an EU Ecolabel approved biodegradable hydraulic oil.
- Additional fluids are likely to be present, please consult the Operations and Maintenance Manual or the Application and Installation guide for complete fluid recommendations and maintenance intervals.

Features and Technology

- The following features and technology may contribute to fuel savings and/or carbon reduction. Features may vary. Consult your Cat dealer for details.
 - Advanced hydraulic systems balance power and efficiency
 - Smart mode matches machine power to digging requirements automatically
 - Eco mode minimizes fuel consumption for light applications
 - Increase operating efficiency up to 45% with standard Cat technologies
 - Cut maintenance costs with extended service intervals
 - The latest hydraulic oil filter provides longer life with a 3,000-hour replacement interval

For more complete information on Cat products, dealer services, and industry solutions, visit us on the web at www.cat.com

© 2023 Caterpillar
All rights reserved

Materials and specifications are subject to change without notice. Featured machines in photos may include additional equipment. See your Cat dealer for available options.

CAT, CATERPILLAR, LET'S DO THE WORK, their respective logos, "Caterpillar Corporate Yellow," the "Power Edge" and Cat "Modern Hex" trade dress as well as corporate and product identity used herein, are trademarks of Caterpillar and may not be used without permission.

AEXJ0077-07 (10-2023)
Replaces AEXJ0077-06
Build Number: 07F
(China)

