

# 950 GC

WHEEL LOADER



---

**Engine Maximum Power**  
**Operating Weight**

170 kW (228 hp)  
18 392 kg (40,547 lb)

Cat® engine meets Brazil MAR-1 emission standards, equivalent to U.S. EPA Tier 3 and EU Stage IIIA.



The Cat® 950 GC Wheel Loader is designed specifically to handle all the jobs on your worksite from material handling and truck loading to general construction and stockpiling. This machine is purpose built to be just the right machine to get your everyday jobs done. Great machine performance combined with the low owning and operating costs makes the 950 GC the right choice for your business.

# CAT® 950 GC

PURPOSE BUILT



## WHEEL LOADERS MADE FOR MORE

Cat wheel loaders were built with efficiency in mind, offering you the best in:

- + RELIABILITY
- + DURABILITY
- + PRODUCTIVITY
- + FUEL EFFICIENCY

Experience higher performance while reducing costs and fuel consumption with Cat wheel loaders.

---

## POWERFUL EFFICIENCY

Low fuel consumption and exceptional production capabilities help you get the job done right for less.

---

## PRODUCTIVE RESULTS

Purpose built to handle all your jobsite requirements from material handling and truck loading to general construction and stockpiling.

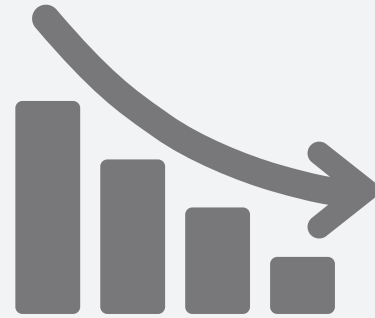
---

## EASY SERVICEABILITY

Our electrical and hydraulic service centers have additional key serviceability features, making machine maintenance and in-field component exchange quick, easy, and efficient.

# ECONOMICAL SAVINGS

**THE 950 GC IS THE  
SENSIBLE CHOICE  
FOR YOUR BUSINESS.**



**LOWER** **OWNING FUEL** **COSTS**





## POWERTRAIN

### POWERFUL EFFICIENCY

Staying ahead of the competition, Caterpillar offers a wide variety of cutting-edge technology and components that are specifically built to save time and reduce fuel costs.

#### ENGINE AND EMISSIONS

---

Powered by a Cat engine and certified to meet emission standards, these machines feature Engine Idle Management System (EIMS) to minimize fuel consumption.

#### TRANSMISSION

---

The power-shift countershaft transmission features high contact ratio and heat-treated gears complemented by heavy duty bearings for transmission durability, fuel efficiency, and low noise and vibration levels during operation.

#### CONTROL VALVES

---

The proven Cat Electronic Long Range Transmission (ELRT) control valve allows full-power shifts and directional shift changes. The modulated shifts ensure a smooth ride, fast cycles, and extended component life.

#### DURABLE AXLES

---

Heavy-duty axles with inboard-planetary final drives feature hydraulically activated wet-disc brakes. Limited-slip differentials are available for applications requiring increased traction.

#### ON-DEMAND FAN

---

Variable speed fan adjusts to meet the cooling requirements of the machine, lowering fuel consumption, noise levels, and radiator plugging. In very dusty conditions, an optional reversing fan reduces radiator plugging and reduces cleaning needs.

# PRODUCTIVE RESULTS

WORK SMART AND MOVE MORE

---

## PRODUCT LINK™

Track asset location, hours, fuel usage, diagnostic codes, and idle time to improve your productivity and lower your operating costs.

---

## Z-BAR LINKAGE

The proven Z-bar linkage combines digging efficiency, high breakout forces, and superior production capabilities.

---

## RIDE CONTROL SYSTEM

The optional ride control system improves ride, performance, and load retention when traveling over rough terrain and at higher speeds, lowering cycle times and boosting productivity.



---

## PERFORMANCE SERIES BUCKETS

Easy-to-load Performance Series Buckets also improve material retention and reduce dig times. These buckets significantly improve productivity and fuel efficiency, resulting in unsurpassed production capabilities with increased bucket fill factors – ranging from 100% to 110%.

---

## LOAD SENSING HYDRAULICS

Load sensing hydraulic system produces flow and pressure for the implement system only when needed, improving machine productivity and resulting in lower fuel consumption. An optional third hydraulic function is also available to control a variety of work tools.

### CAT PAYLOAD KIT (Optional)\*

Track productivity from the cab with quick access to information such as truck target weights, loads, and totals.

- + PROVEN ACCURACY
- + FLEXIBLE INSTALLATION
- + EASY CALIBRATION AND SETUP
- + SIMPLE INSTALLATION: COMPARABLE TO THIRD PARTY PAYLOAD SYSTEMS

\*Not legal for trade.

TESTED, PROVEN, AND READY TO WORK.

# EASY SERVICEABILITY



---

## SERVICE CENTERS

Hydraulic and electrical service centers provide convenient access to numerous maintenance and service points, enhancing convenience for operators and service technicians.

---

## GREASE POINTS

Grease fittings for hard-to-reach pins are grouped conveniently for easy and quick preventive lubrication.

---

## CAT AUTOLUBE SYSTEM

The new optional Cat Autolube System has a useful one-button control and includes fault flash function.

---

## CATERPILLAR DESIGNED

Built on a long legacy of high performance and highly reliable wheel loaders, our machine components are designed and manufactured to Caterpillar quality standards.

---

## RENOWNED SUPPORT

Your Cat dealer is always available to help you maximize machine uptime by providing global parts support, trained technicians, and customer support agreements.

# OPERATOR ENVIRONMENT

## COMFORTABLE CAB, INTUITIVE CONTROLS

A comfortable operating environment and intuitive controls help to reduce the stresses of a demanding job.



### ENTRY AND EXIT

Ladders are standard on both sides of the machine for easy access to the cab from the left-hand side and service points from the right-hand side. The operator station is equipped with handrails for cab accessibility.



### DISPLAY AND INTERFACE

Simple to operate, the complete user interface has been designed as an intuitive system, allowing the operator to monitor machine health.



### GREATER VISIBILITY

Extended windows with wide, flat, and distortion-free front windshield and spot mirrors offer excellent visibility. A rearview camera option and windshield guard option are available.



### EASY CONTROLS

The pilot-operated hydraulic controls deliver comfortable, low-effort operation. Single axis levers or joystick are available, and the adjustable steering column includes a manual shifter.



### CLIMATE CONTROLLER

Air conditioning and louvered vents let the operator direct air flow, and the fresh air and recirculation cab air filters allow for superior filtration and easy cleaning.



### COMFORTABLE SEAT

The comfort cloth mechanical suspension seat provides a variety of adjustments and flexible arm and headrest. An air suspension seat with high-back and heating option is also available.

# SUPPORT ALL YOUR JOBSITE NEEDS

For specific applications, you need a wheel loader that is purpose built for the job. Cat work tools are engineered to handle all of your specific worksite needs.



## FUSION™ QUICK COUPLER

The Fusion Quick Coupler System allows machines to use a wide range of tools that can each be picked up by machines of varying sizes. Fusion is designed to integrate the work tool and the machine by pulling the coupler and tool closer to the loader, increasing overall lift capability.

- + Improved machine performance
- + Unsurpassed durability
- + Good visibility



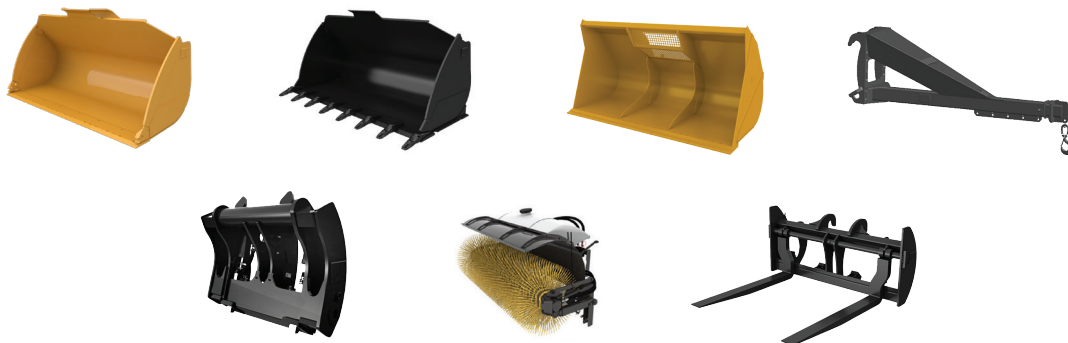
## PERFORMANCE SERIES BUCKETS

Performance Series Buckets use a system-based approach to balance bucket shape with the machine's lift and tilt capacity, weight, and linkage. A variety of bucket styles match the machine to the application and material moved.

- + Fuel efficient
- + Lower operating costs
- + Higher productivity

### Work Tool Attachments for All Support Functions on Your Jobsite

A variety of pin-on and coupler attachments are available for the 950 GC model. Cat work tools are durable, reliable, and designed for performance and efficiency with your Cat wheel loader.





# TECHNICAL SPECIFICATIONS

See [cat.com](http://cat.com) for complete specifications.

| ENGINE  |                 |                     |  |
|---|-----------------|---------------------|--|
| Engine Model  | Cat® C7.1       |                     |  |
| Engine Power @ 2,000 rpm – ISO 14396:2002                           | 170 kW          | 228 hp              |  |
| ISO 14396:2002 (DIN)  | 231 hp (metric) |                     |  |
| Gross Power @ 2,000 rpm – SAE J1995:2014                            | 171 kW          | 229 hp              |  |
| SAE J1995:2014 (DIN)  | 232 hp (metric) |                     |  |
| Net Power @ 2,000 rpm – ISO 9249:2007, SAE J1349:2011               | 154 kW          | 207 hp              |  |
| SAE J1349:2011 (DIN)  | 209 hp (metric) |                     |  |
| Engine Torque @ 1,400 rpm – ISO 14396:2002                          | 1020 N·m        | 752 lbf·ft          |  |
| Gross Torque @ 1,400 rpm – SAE J1995:2014                           | 1027 N·m        | 757 lbf·ft          |  |
| Net Torque @ 1,300 rpm – ISO 3294:2007, SAE J1349:2011, EEC 80/1269 | 931 N·m         | 687 lbf·ft          |  |
| Bore  | 105 mm          | 4.13 in             |  |
| Stroke  | 135 mm          | 5.31 in             |  |
| Displacement  | 7.01 L          | 428 in <sup>3</sup> |  |

- Cat engine meets Brazil MAR-1 emission standards, equivalent to U.S. EPA Tier 3 and EU Stage IIIA.
  - The net power advertised is the power available at the flywheel when the engine is equipped with fan, alternator, air cleaner, and muffler.
  - Cat engines are compatible with diesel fuel blended with following lower-carbon intensity fuels up to:
    - 100% biodiesel FAME (fatty acid methyl ester)\*
    - 100% renewable diesel, HVO (hydrotreated vegetable oil) and GTL (gas-to-liquid) fuels
- Refer to guidelines for successful application. Please consult your Cat dealer or "Caterpillar Machine Fluids Recommendations" (SEBU6250) for details.  
 \* For use of blends higher than 20% biodiesel, consult your Cat dealer.

| WEIGHTS          |           |           |
|------------------|-----------|-----------|
| Operating Weight | 18 392 kg | 40,547 lb |

- Weight and static tipping loads and operating weights shown are based on a machine configuration with Triangle 23.5R25 tires, full fluids, operator, standard counterweight, standard ambient arrangement, open differential axles (front/rear), roading fenders, ride control and a 3.1 m<sup>3</sup> (4.0 yd<sup>3</sup>) general purpose bucket with BOCE.

| BUCKET CAPACITIES |                            |                              |
|-------------------|----------------------------|------------------------------|
| Bucket Range      | 2.7-<br>4.4 m <sup>3</sup> | 3.5-<br>5.75 yd <sup>3</sup> |

| SOUND  |           |
|--|-----------|
| Operator Sound Pressure Level (ISO 6396:2008)  | 73 dB(A)  |
| Exterior Sound Power Level (ISO 6395:2008)     | 108 dB(A) |
| Operator Sound Pressure Level (ISO 6396:2008)* | 73 dB(A)  |
| Exterior Sound Power Level (ISO 6395:2008)**   | 106 dB(A) |

\*Including countries that adopt the EU and UK Directives

\*\*EU Noise Directive 2000/14/EC and UK Noise Regulation 2001 No. 1701

| TRANSMISSION |           |          |           |           |          |
|--------------|-----------|----------|-----------|-----------|----------|
| Forward 1    | 7.0 km/h  | 4.3 mph  | Reverse 1 | 7.0 km/h  | 4.3 mph  |
| Forward 2    | 12.5 km/h | 7.8 mph  | Reverse 2 | 12.5 km/h | 7.8 mph  |
| Forward 3    | 22.0 km/h | 13.7 mph | Reverse 3 | 22.0 km/h | 13.7 mph |
| Forward 4    | 36.0 km/h | 22.4 mph |           |           |          |

- Maximum travel speeds (23.5-25 tires).
- Maximum travel speed in standard vehicle with empty bucket and standard L3 tires with 760 mm (30 in) roll radius.

| OPERATING SPECIFICATIONS                                   |           |            |  |
|--|-----------|------------|--|
| Static Tipping Load – Full 38° Turn – with Tire Deflection | 10 942 kg | 24,123 lb  |  |
| Static Tipping Load – Full 38° Turn – No Tire Deflection   | 11 638 kg | 26,657 lb  |  |
| Breakout Force   | 154 kN    | 34,645 lbf |  |

- For a machine configuration as defined under "Weight."
- Full compliance to ISO 14397-1:2007 Sections 1 through 6, which requires 2% verification between calculations and testing.

| SERVICE REFILL CAPACITIES              |       |          |
|--|-------|----------|
| Fuel Tank                              | 290 L | 76.6 gal |
| Cooling System                         | 48 L  | 12.7 gal |
| Crankcase                              | 20 L  | 5.3 gal  |
| Transmission                           | 45 L  | 11.9 gal |
| Differentials and Final Drives – Front | 40 L  | 10.6 gal |
| Differentials and Final Drives – Rear  | 38 L  | 10.0 gal |
| Hydraulic Tank                         | 120 L | 31.7 gal |

| HYDRAULIC SYSTEM   |              |            |  |
|--|--------------|------------|--|
| Implement System Pump Type   | Piston       |            |  |
| Steering System Pump Type  | Piston       |            |  |
| Implement System – Maximum Pump Output at 2,200 rpm                                  | 256 L/min    | 68 gal/min |  |
| Implement System – Maximum Operating Pressure at 50 ± 1.5 L/min                      | 27 900 kPa   | 4,047 psi  |  |
| Implement System – Optional 3rd Function Maximum Pressure at 70 L/min (18.5 gal/min) | 20 680 kPa   | 2,999 psi  |  |
| Implement System – Optional 3rd Function Maximum Flow                                | 240 L/min    | 63 gal/min |  |
| Hydraulic Cycle Time – Raise from Carry Position                                     | 6.1 Seconds  |            |  |
| Hydraulic Cycle Time – Dump at Maximum Raise   | 1.2 Seconds  |            |  |
| Hydraulic Cycle Time – Lower, Empty, Float Down                                      | 2.8 Seconds  |            |  |
| Hydraulic Cycle Time – Total Cycle Time  | 10.1 Seconds |            |  |

| AIR CONDITIONING SYSTEM  |
|--|
| The air conditioning system on this machine contains the fluorinated greenhouse gas refrigerant R134a (Global Warming Potential = 1430). The system contains 1.9 kg (4.2 lb) of refrigerant which has a CO <sub>2</sub> equivalent 2.717 metric tonnes (2.995 tons). |

For additional information, refer to the Technical Specifications brochure for the 950 GC model available at [www.cat.com](http://www.cat.com) or your Cat dealer.

# STANDARD & OPTIONAL EQUIPMENT

Standard and optional equipment may vary. Consult your Cat dealer for details.

| OPERATOR ENVIRONMENT   | STANDARD | OPTIONAL |
|--|----------|----------|
| Air conditioning (HVAC) with 10 vents and filter unit located outside of cab                   | •        |          |
| Cab, pressurized and sound suppressed  | •        |          |
| CB radio ready   |          | •        |
| Doors, service access (locking)  | •        |          |
| Mirrors, rearview internal and external  | •        |          |
| Radio: DAB+/AM/FM/BT   |          | •        |
| ROPS/FOPS structure  | •        |          |
| Seat, Cat Comfort (cloth), mechanical suspension   | •        |          |
| Seat, high-back, air suspended   |          | •        |
| Seat, air suspended, heated  |          | •        |
| Steering column, adjustable angle  | •        |          |
| Steering, secondary, electrical*   |          | •        |
| Window, sliding (left and right sides)   | •        |          |
| POWERTRAIN   | STANDARD | OPTIONAL |
| Axles, oil cooler  |          | •        |
| Brakes, full hydraulic enclosed wet-disc   | •        |          |
| Cat C7.1 engine, meets emission standards  | •        |          |
| EIMS (Engine Idle Management System)   | •        |          |
| Fan, radiator, electronically controlled, hydraulically driven, temperature sensing, on demand | •        |          |
| Fan, reversing cooling, automatic and manual control   |          | •        |
| Fuel priming pump (manual)   | •        |          |
| Fuel/water separator   | •        |          |
| Radiator, unit core (9.5 fpi) with ATAAC   | •        |          |
| Switch, transmission neutralizer (adjustable) lockout  | •        |          |
| Torque converter   | •        |          |
| Transmission, automatic, power shift (4F/3R), kick-down 2-1 manual                             | •        |          |
| HYDRAULICS   | STANDARD | OPTIONAL |
| Dedicated load sensing steering pump   | •        |          |
| Load sensing implement system  | •        |          |
| Ride control   |          | •        |
| S•O•S <sup>SM</sup> oil sampling valves  | •        |          |
| 3 <sup>rd</sup> function with additional dedicated single axis lever                           |          | •        |

| ELECTRICAL   | STANDARD | OPTIONAL |
|--|----------|----------|
| Lighting system: 4 halogen work lights   | •        |          |
| Lighting system: 8 halogen work lights   |          | •        |
| Lighting system: 4 LED work lights   |          | •        |
| Lights: LED taillights   | •        |          |
| Rooding lights with high/low beam and F and R turn signals                       |          | •        |
| Starter, electric (heavy duty)   | •        |          |
| Starting and charging system, 24V  | •        |          |
| MONITORING SYSTEM  | STANDARD | OPTIONAL |
| Digital indicators:  |          |          |
| Gear indicator   |          |          |
| Speedometer  | •        |          |
| Service meter units  |          |          |
| Fault codes  |          |          |
| Gauges:  |          |          |
| Engine coolant temperatures/fluid level  | •        |          |
| Hydraulic/transmission oil temperature   |          |          |
| Tachometer/DEF level   |          |          |
| ADDITIONAL EQUIPMENT   | STANDARD | OPTIONAL |
| Cat Autolube   |          | •        |
| Camera, front view (kit)**   |          | •        |
| Cat Payload scale system   |          | •        |
| Cat Payload installation   |          | •        |
| Cold weather starting (batteries 2x1,400 CCA and ether starting aid)             |          | •        |
| Differentials, limited slip  |          | •        |
| Fender extensions or roading   |          | •        |
| L5 traction tires  |          | •        |
| L3 bias or radial tires  | •        |          |
| Precleaner, turbine  |          | •        |
| Product Link ready   | •        |          |
| Tilt cylinder guard  |          | •        |
| Toolbox  |          | •        |
| Variable backup alarm (3dB above ambient noise)                                  | •        |          |
| Windshield guard   |          | •        |
| LINKAGE  | STANDARD | OPTIONAL |
| Fusion quick coupler control   |          | •        |
| Lift and bucket return-to-dig kickouts (electro-magnetic), mechanical adjustment | •        |          |
| Z-bar, fabricated crosstube/tilt lever   | •        |          |

\*Standard where mandated.

\*\* Refer to M0106413 publication for usage requirements.

For additional information, refer to the Technical Specifications brochure for the 950 GC model available at [www.cat.com](http://www.cat.com) or your Cat dealer.



For more complete information on Cat products, dealer services and industry solutions, visit us on the web at [www.cat.com](http://www.cat.com).

Materials and specifications are subject to change without notice. Featured machines in photos may include additional equipment. See your Cat dealer for available options.

© 2024 Caterpillar. All Rights Reserved. CAT, CATERPILLAR, LET'S DO THE WORK, their respective logos, Fusion, S•O•S, Product Link, "Caterpillar Corporate Yellow", the "Power Edge" and Cat "Modern Hex" trade dress as well as corporate and product identity used herein, are trademarks of Caterpillar and may not be used without permission.

[www.cat.com](http://www.cat.com) [www.caterpillar.com](http://www.caterpillar.com)



AEXQ2510-03 (07-2024)  
Build Number: 01B  
(Afr-ME, Eurasia, S Am  
[excluding Chile], Aus-NZ, Asia  
[excluding China, India,  
Japan, S. Korea])

