



326

Hydraulic Excavator

Technical Specifications

Configurations and features may vary by region. Please consult your Cat® dealer for availability in your area.

Table of Contents

Specifications	2
Engine	2
Swing Mechanism	2
Weights	2
Track	2
Drive	2
Hydraulic System	2
Service Refill Capacity	2
Standards	2
Sound Performance	2
Operating Weights and Ground Pressures	3
Major Component Weights	3
Dimensions	4
Working Ranges and Forces	5
Bucket Specifications and Compatibility	6
Attachments Offering Guide	7
Standard and Optional Equipment	8
Dealer Installed Kits and Attachments	10
Cab Options	11

326 Hydraulic Excavator Specifications

Engine

Engine Model	Cat® C7.1	
Net Power – ISO 9249	158 kW	212 hp
Engine Power – ISO 14396	159 kW	213 hp
Bore	105 mm	4 in
Stroke	135 mm	5 in
Displacement	7.01 L	428 in ³

- Meets China Nonroad Stage III emission standards, equivalent to U.S. EPA Tier 3/EU Stage IIIA.
- Recommended for use up to 4500 m (14,760 ft) altitude with engine power derate above 3000 m (9,840 ft).
- Net power is tested per ISO 9249. Standards in effect at the time of manufacture.
- Net power advertised is the power available at the flywheel when the engine is equipped with fan, air intake system, exhaust system and alternator.
- Rated speed at 1,900 rpm.

Swing Mechanism

Swing Speed	10.5 rpm	
Maximum Swing Torque	106 kN·m	78,182 lbf-ft

Weights

Operating Weight	25 700 kg	56,500 lb
• Long undercarriage, HD Reach boom, HD R2.95 m (9'7") stick, GD 1.54 m ³ (2.01 yd ³) bucket, 600 mm (24") triple grouser shoes and 4.6 mt (10,141 lb) counterweight.		
Operating Weight	28 900 kg	63,600 lb
• Long undercarriage, Super Long Reach boom, 7.85A (25'9") stick, 0.57 m ³ (0.75 yd ³) Ditch Cleaning bucket, 790 mm (31") triple grouser shoes and 6.7 mt (14,770 lb) counterweight.		

Track

Standard Track Shoes Width	600 mm	24 in
Optional Track Shoes Width	790 mm	31 in
Number of Shoes (each side)	51	
Number of Track Rollers (each side)	8	
Number of Carrier Rollers (each side)	2	

Drive

Gradeability	35°/70%	
Maximum Travel Speed	5.7 km/h	3.5 mph
Maximum Drawbar Pull	226 kN	50,807 lbf

Hydraulic System

Main System – Maximum Flow – Implement	515 L/min	136 gal/min
Maximum Pressure – Equipment – Implement	35 000 kPa	5,075 psi
Maximum Pressure – Equipment – Lift Mode	38 000 kPa	5,510 psi
Maximum Pressure – Travel	35 000 kPa	5,075 psi
Maximum Pressure – Swing	28 400 kPa	4,118 psi
Boom Cylinder – Bore	135 mm	5 in
Boom Cylinder – Stroke	1305 mm	51 in
Stick Cylinder – Bore	140 mm	6 in
Stick Cylinder – Stroke	1660 mm	65 in
Bucket Cylinder – Bore	130 mm	5 in
Bucket Cylinder – Stroke	1156 mm	46 in

Service Refill Capacity

Fuel Tank Capacity	474 L	125.2 gal
Cooling System	25 L	6.6 gal
Engine Oil (with filter)	25 L	6.6 gal
Swing Drive	10 L	2.6 gal
Final Drive (each)	5.5 L	1.5 gal
Hydraulic System (including tank)	310 L	81.9 gal
Hydraulic Tank (including suction pipe)	147 L	38.8 gal

Standards

Brakes	ISO 10265: 2008
Cab/ROPS	ISO 12117-2: 2008

Sound Performance

ISO 6395 (external)	103 dB(A)
ISO 6396 (inside cab)	70 dB(A)

- When properly installed and maintained, the cab offered by Caterpillar, when tested with doors and windows closed according to ANSI/SAE J1166 OCT98, meets OSHA and MSHA requirements for operator sound exposure limits in effect at time of manufacture.
- Hearing protection may be needed when operating with an open operator station and cab (when not properly maintained or doors/windows open) for extended periods or in a noisy environment.

326 Hydraulic Excavator Specifications

Operating Weights and Ground Pressures

	600 mm (24") Triple Grouser Shoes		600 mm (24") Double Grouser Shoes		790 mm (31") Triple Grouser Shoes	
	Weight	Ground Pressure	Weight	Ground Pressure	Weight	Ground Pressure
	kg (lb)	kPa (psi)	kg (lb)	kPa (psi)	kg (lb)	kPa (psi)
Base Frame with Track Rollers and Carrier Rollers						
4.6 mt (10,140 lb) Counterweight + Long Undercarriage Base Machine						
HD Reach Boom + 2.95 m (9'8") HD Stick + 1.54 m ³ (2.01 yd ³) GD Bucket	25 700 (56,500)	51 (7.4)	25 600 (56,300)	51 (7.4)	26 300 (58,000)	40 (5.8)
Base machine with 6700 kg (14,771 lb) counterweight and long undercarriage						
6.7 mt (14,770 lb) Counterweight + Long Undercarriage Base Machine						
Super Long Reach Boom + Super Long Reach 9.85 m (25'9") Stick + 0.57 m ³ (0.75 yd ³) Ditch Cleaning Bucket	28 200 (62,100)	56 (8.2)	28 100 (62,000)	56 (8.1)	28 900 (63,600)	44 (6.4)

All operating weights include a 90% fuel tank with 75 kg (165 lb) operator.

Major Component Weights

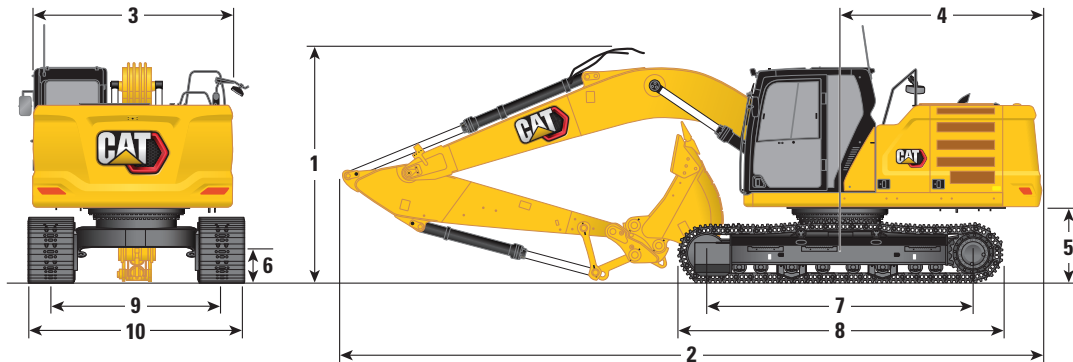
	kg	lb
Base Machine Weight: including upperframe, undercarriage, counterweight, boom cylinders, without boom, stick, bucket, stick cylinder, bucket cylinder, tracks, without fuel, operator		
With 4.6 mt (10,140 lb) Counterweight with Long Undercarriage	17 100	37,700
With 6.7 mt (14,770 lb) Counterweight with Long Undercarriage	19 200	42,330
Track Shoes:		
600 mm (24") Width, 12.5 mm (0.49") Thick, Triple Grouser Track Shoes	3320	7,320
600 mm (24") Width, 13 mm (0.51") Thick, Double Grouser Track Shoes	3250	7,160
790 mm (31") Width, 12.5 mm (0.49") Thick, Triple Grouser Track Shoes with Step Extension for ISO 2867	4000	8,820
Two Boom Cylinders	460	1,010
Weight of 90% Fuel Tank and 75 kg (165 lb) Operator	460	1,010
Counterweights:		
4.6 mt (10,141 lb) Counterweight	4600	10,140
6.7 mt (14,771 lb) Counterweight	6700	14,770
Undercarriage:		
Long Undercarriage	5500	12,130
Booms (including lines, pins, stick cylinder):		
HD Reach Boom 6.15 m (20'2")	2180	4,810
Super Long Reach Boom 10.2 m (33'6")	3190	7,030
Sticks (including lines, pins, bucket cylinder, bucket linkage):		
HD Reach Stick R2.95CB (9'8")	1390	3,060
Super Long Reach Stick 7.85A (25'9")	1600	3,530
Buckets (without linkage):		
1.54 m ³ (2.01 yd ³) GD CB Linkage	1160	2,560
0.57 m ³ (0.75 yd ³) DC A Linkage	390	860

Refer to page 6 for a complete list of bucket options.

326 Hydraulic Excavator Specifications

Dimensions

All dimensions are approximate and may vary depending on bucket selection.

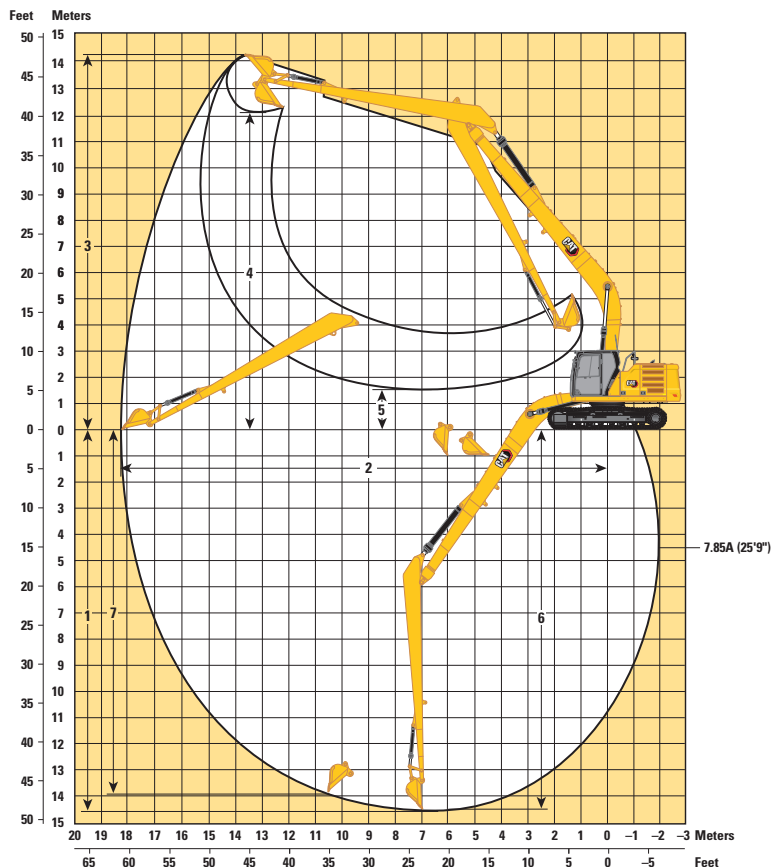
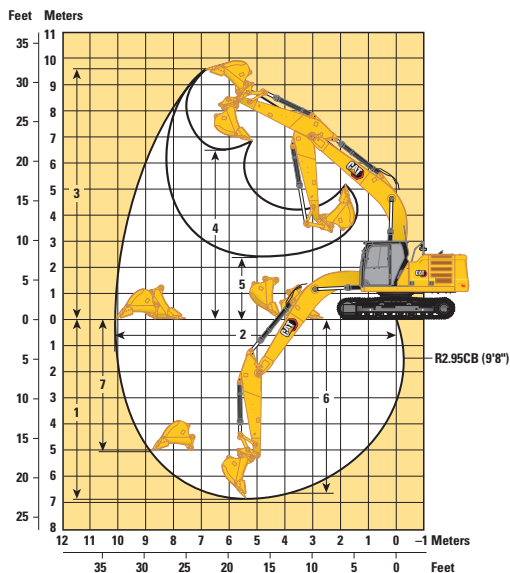


Boom Options	HD Reach Boom 5.9 m (19'4")		Super Long Reach Boom 10.2 m (33'6")	
Stick Options	HD Reach Stick R2.95CB (9'8")		Super Long Reach Stick 7.85A (25'9")	
1 Machine Height				
Cab Height	3000 mm	9'10"	3000 mm	9'10"
FOGS Height	3140 mm	10'4"	3140 mm	10'4"
Guardrails/Handrails Height	3000 mm	9'10"	3000 mm	9'10"
With Boom/Stick/Bucket Installed	3250 mm	10'8"	3160 mm	10'4"
With Boom/Stick Installed	3120 mm	10'3"	3160 mm	10'4"
With Boom Installed	3000 mm	9'10"	3000 mm	9'10"
2 Machine Length:				
With Boom/Stick/Bucket Installed	10 060 mm	33'0"	14 350 mm	47'1"
With Boom/Stick Installed	10 040 mm	32'11"	14 350 mm	47'1"
With Boom Installed	8720 mm	28'7"	13 250 mm	43'6"
3 Upperframe Width without Walkways	2940 mm	9'8"	2940 mm	9'8"
4 Tail Swing Radius	3000 mm	9'10"	3000 mm	9'10"
5 Counterweight Clearance without Shoe Lug	1060 mm	3'6"	1060 mm	3'6"
6 Ground Clearance without Shoe Lug	440 mm	1'5"	440 mm	1'5"
7 Length to Center of Rollers	3830 mm	12'7"	3830 mm	12'7"
8 Track Length	4640 mm	15'3"	4640 mm	15'3"
9 Track Gauge	2590 mm	8'6"	2590 mm	8'6"
10 Undercarriage Width:				
600 mm (24") Shoes	3190 mm	10'6"	3190 mm	10'6"
790 mm (31") Shoes	3380 mm	11'1"	3380 mm	11'1"
Bucket Type	GD		Ditch Cleaning	
Bucket Capacity	1.54 m ³	2.01 yd ³	0.57 m ³	0.75 yd ³
Bucket Tip Radius	1640 mm	5'5"	1070 mm	3'6"

326 Hydraulic Excavator Specifications

Working Ranges and Forces

All dimensions are approximate and may vary depending on bucket selection.



Boom Options

HD Reach Boom
5.9 m (19'4")

Super Long Reach Boom
10.2 m (33'6")

Stick Options

HD Reach Stick
R2.95CB (9'8")

Super Long Reach Stick
7.85A (25'9")

1 Maximum Digging Depth	6800 mm	22'4"	14 580 mm	47'10"
2 Maximum Reach at Ground Line	10 090 mm	33'1"	18 280 mm	60'0"
3 Maximum Cutting Height	9640 mm	31'8"	14 210 mm	46'7"
4 Maximum Loading Height	6640 mm	21'9"	12 150 mm	39'10"
5 Minimum Loading Height	2410 mm	7'11"	1500 mm	4'11"
6 Maximum Depth Cut for 2240 mm (8'0") Level Bottom	6620 mm	21'9"	14 480 mm	47'6"
7 Maximum Vertical Wall Digging Depth	5120 mm	16'10"	13 980 mm	45'10"
Bucket Digging Force (ISO)	166 kN	37,320 lbf	61 kN	13,710 lbf
Stick Digging Force (ISO)	121 kN	27,200 lbf	45 kN	10,120 lbf
Bucket Type	GD		Ditch Cleaning	
Bucket Capacity	1.54 m ³	2.01 yd ³	0.57 m ³	0.74 yd ³
Bucket Tip Radius	1640 mm	5'5"	1070 mm	3'6"

326 Hydraulic Excavator Specifications

Bucket Specifications and Compatibility

		Undercarriage							Long	Long
		Counterweight							4.6 mt (10,140 lb)	6.7 mt (14,770 lb)
	Linkage	Width		Capacity		Weight		Fill	Reach HD	SLR
		mm	in	m ³	yd ³	kg	lb	%	R2.95 HD (9'8")	SLR
Pin-On (No Quick Coupler)										
General Duty	CB	1400	55	1.54	2.01	1125	2,480	100	⊖	
Heavy Duty	CB	1300	51	1.36	1.78	1168	2,575	100	⊙	
	CB	1350	53	1.45	1.90	1189	2,621	100	⊙	
	CB	1450	57	1.57	2.05	1273	2,807	100	⊖	
	CB	1500	60	1.65	2.16	1301	2,869	100	X	
	CB	1500	60	1.76	2.30	1348	2,972	100	X	
	CB	1450	58	1.60	2.09	1269	2,797	100	⊖	
	CB	1650	67	1.90	2.48	1364	3,007	100	X	
Severe Duty	CB	1750	69	2.00	2.61	1392	3,068	100	X	
	CB	1300	51	1.36	1.78	1310	2,888	90	⊙	
	CB	1350	54	1.45	1.90	1335	2,943	90	⊙	
Ditch Cleaning	CB	1400	56	1.54	2.01	1408	3,104	90	⊖	
	A	1200	48	0.57	0.75	364	803	100		◇
	A	1500	60	0.74	0.97	455	1,003	100		X
Maximum load with pin-on (payload + bucket)								kg	3723	955
								lb	8,208	2,105
With Cat Pin Grabber Coupler										
General Duty	CB	1400	55	1.54	2.01	1125	2,480	100	○	
Heavy Duty	CB	1300	51	1.36	1.78	1168	2,575	100	⊖	
	CB	1350	53	1.45	1.90	1189	2,621	100	○	
	CB	1450	57	1.57	2.05	1273	2,807	100	○	
	CB	1500	60	1.65	2.16	1301	2,869	100	○	
	CB	1500	60	1.76	2.30	1348	2,972	100	◇	
	CB	1450	58	1.60	2.09	1269	2,797	100	○	
	CB	1650	67	1.90	2.48	1364	3,007	100	◇	
Severe Duty	CB	1750	69	2.00	2.61	1392	3,068	100	X	
	CB	1300	51	1.36	1.78	1310	2,888	90	⊖	
	CB	1350	54	1.45	1.90	1335	2,943	90	⊖	
	CB	1400	56	1.54	2.01	1408	3,104	90	○	
Maximum load with coupler (payload + bucket)								kg	3197	
								lb	7,048	

Maximum Material Density:

- ⊙ 1800 kg/m³ (3,000 lb/yd³)
- ⊖ 1500 kg/m³ (2,500 lb/yd³)
- 1200 kg/m³ (2,000 lb/yd³)
- ◇ 900 kg/m³ (1,500 lb/yd³)
- X Not Recommended

The above loads are in compliance with hydraulic excavator standard EN474-5:2006 + A3:2013, they do not exceed 87% of hydraulic lifting capacity or 75% of tipping capacity with front linkage fully extended at ground line with bucket curled.

Capacity based on ISO 7451:2007.

Bucket weight with General Duty tips.

Caterpillar recommends using appropriate work tools to maximize the value customers receive from our products. Use of work tools, including buckets, which are outside of Caterpillar's recommendations or specifications for weight, dimensions, flows, pressures, etc. may result in less-than-optimal performance, including but not limited to reductions in production, stability, reliability, and component durability. Improper use of a work tool resulting in sweeping, prying, twisting and/or catching of heavy loads will reduce the life of the boom and stick.

326 Hydraulic Excavator Specifications

Attachments Offering Guide

Not all Attachments are available in all regions. Consult your Cat dealer for configurations available in your region.

Match

PIN-ON ATTACHMENTS

Undercarriage	L	
Counterweight	4.6 mt (10,140 lb)	
Boom Type	Reach HD	
Stick Length	2.95 m HD (9'8")	
Hydraulic Hammers	H120 GC	✓
	H120 GC Side Mount	✓
	H120 GC S	✓
	H120 S	✓
	H130 GC	✓
	H130 GC Side Mount	✓
	H130 GC S	✓
	H130 S	✓
Compactors (Vibratory Plate)	CVP110	✓

CAT PIN GRABBER COUPLER ATTACHMENTS

Undercarriage	L	
Counterweight	4.6 mt (10,140 lb)	
Boom Type	Reach HD	
Stick Length	2.95 m HD (9'8")	
Hydraulic Hammers	H120 GC	✓
	H120 GC Side Mount	✓
	H120 GC S	✓
	H120 S	✓
	H130 GC	✓
	H130 GC Side Mount	✓
	H130 GC S	✓
	H130 S	✓
Compactors (Vibratory Plate)	CVP110	✓

326 Standard and Optional Equipment

Standard and Optional Equipment

Standard and optional equipment may vary. Consult your Cat dealer for details.

	Standard	Optional		Standard	Optional
CAT TECHNOLOGY			HYDRAULIC SYSTEM		
Cat Product Link™	✓		Electronic main control valve	✓	
Work tool recognition	✓		Boom and stick regeneration circuits	✓	
Cat GRADE with 2D*	✓		Automatic warm up	✓	
Cat GRADE with Advanced 2D*		✓	Automatic two-speed travel	✓	
Cat GRADE with 3D connectivity*:		✓	Boom and stick drift reduction valve	✓	
– Virtual Reference Station**			Heavy lift mode	✓	
– Internet Base Service Station**			Boom and stick lowering check valves		✓
– Trimble Connected Community**			Hammer return filter circuit		✓
Cat GRADE with Assist*:	✓		Combined tool control (two pump, one/ two way high-pressure flow)		✓
– Boom Assist			Element type main hydraulic filter	✓	
– Bucket Assist			Tandem type electronic main pump	✓	
– Swing Assist			UNDERCARRIAGE AND STRUCTURES		
– Grade Assist			Segmented track guiding guard	✓	
– Lift Assist			Travel motor guard	✓	
Cat PAYLOAD*:	✓		Bottom guard		✓
– Static weigh			Grease lubricated track	✓	
– Semiautomatic calibration			Swing drive and motor, swing bearing for higher swing torque	✓	
– Payload information			4.6 mt (10,141 lb) counterweight	✓	
– USB reporting capability			6.7 mt (14,771 lb) counterweight		✓
2D E-Fence*:	✓		600 mm (24") triple grouser track shoes	✓	
– E-Ceiling			790 mm (31") triple grouser track shoes		✓
– E-Floor			600 mm (24") double grouser track shoes		✓
– E-Swing			Tie-down points on base frame (ISO 15818 Compliant)	✓	
– E-Wall					
– E-Cab Avoidance					
Auto Hammer Stop	✓				
Auto Dig Boost	✓				
Remote Services capability	✓				
ENGINE					
Three selectable modes: Power, Smart, Eco	✓				
Automatic engine speed control	✓				
Auto engine idle shutdown	✓				
4500 m (14,760 ft) altitude capability with engine power derate above 3000 m (9,840 ft)	✓				
52° C (125° F) high-ambient cooling capacity with derate	✓				
–18° C (0° F) cold start capability	✓				
–32° C (–25° F) cold start capability		✓			
Cold start block heaters		✓			
2 × 115 amp dual alternator	✓				
Sealed double element air filter with integrated precleaner	✓				
Two-stage fuel filtration system with water separator and indicator	✓				
Electric fuel priming pump	✓				
Electric cooling fans with auto-reverse function	✓				
Biodiesel capability (up to B20)	✓				

(continued on next page)

*Optional on machines equipped with a Super Long Reach boom.

**Subscription required.

Standard and Optional Equipment *(continued)*

Standard and optional equipment may vary. Consult your Cat dealer for details.

	Standard	Optional		Standard	Optional
BOOMS, STICKS AND LINKAGES			SERVICE AND MAINTENANCE		
5.9 m (19'4") HD Reach boom	✓		Side entry to service platform	✓	
10.2 m (33'6") Super Long Reach boom		✓	Grouped location of engine oil and fuel filters	✓	
2.95 m (9'8") HD Reach stick, CB1 linkage	✓		Sampling ports for Scheduled Oil Sampling (S·O·S SM)	✓	
7.85 m (25'9") Super Long Reach stick, A linkage		✓	Ground-level and platform-level engine oil dipsticks	✓	
Bucket linkage, CB1 family without lifting eye Cat GRADE	✓		Electric refueling pump with auto shutoff		✓
Bucket linkage, A family without lifting eye, Super Long Reach, Cat GRADE		✓	SAFETY AND SECURITY		
ELECTRICAL SYSTEM			Travel alarm		✓
Two 1,000 CCA maintenance-free batteries	✓		Rearview and right-hand-sideview cameras	✓	
Programmable time-delay LED working lights	✓		Ground-level engine shutoff switch	✓	
LED chassis light, left-hand/right-hand boom lights, cab light – 850 lumens	✓		Right-hand handrail and hand hold	✓	
Premium surround lighting package		✓	Signaling/warning horn	✓	
Centralized electrical disconnect switch	✓		Service platform with anti-skid plate and countersunk bolts	✓	
			Hydraulic lock out lever neutralizes all controls	✓	

326 Dealer Installed Kits and Attachments

Dealer Installed Kits and Attachments

Attachments may vary. Consult your Cat dealer for details.

CAB

- Right-hand electrical pedal (two-way) for tool control
- Radial lower wiper windshield (for comfort and deluxe cab only)
- Dual exit rear window kit (Canadian regulation)
- Rain protector plus cab light cover
- Polycarbonate roof hatch (for comfort cab only)
- Front windshield laminated glass (P5A glass, EU demolition regulation)

SAFETY AND SECURITY

- 76 mm (3") retractable seat belt

SERVICE AND MAINTENANCE

- Grease gun holder

GUARDS

- HD swivel guard
- Side rubber bumper guard
- Falling object guard system (not compatible with cab light cover, rain protector)
- Mesh guard full front (not compatible with cab light cover, rain protector)
- Mesh guard lower half front
- Cab vandalism guard

ELECTRICAL

- Jump start wiring

Cab Options

	Comfort	Deluxe
ROPS, standard sound suppression	●	●
High-resolution 203 mm (8") LCD touchscreen monitor	●	●
High-resolution 254 mm (10") LCD touchscreen monitor	○	○
Automatic bi-level air conditioner	●	●
Jog dial and shortcut keys for monitor control	●	●
Keyless push-to-start engine control	●	●
Height-adjustable console, three steps with tool	●	X
Height-adjustable console, infinite with no tool	X	●
Fixed left-side console	●	X
Tilt-up left-side console	X	●
Mechanically adjustable seat suspension	●	X
Heated seat with air-adjustable suspension	X	●
51 mm (2") seat belt	●	●
Bluetooth® integrated radio with USB ports	●	●
12V DC outlets (×2)	●	●
Document storage	●	●
Cup and bottle holders	●	●
Openable two-piece front window	●	●
Upper radial wiper with washer	●	●
Openable steel hatch	●	X
Openable polycarbonate skylight hatch	X	●
LED dome and lower interior lights	●	●
Roller front sunscreen	●	●
Roller rear sunscreen	○	○
Rear window emergency exit	●	●
Washable floor mat	●	●
Beacon ready	●	●

- Standard
- Optional
- X Not available

For more complete information on Cat products, dealer services, and industry solutions, visit us on the web at www.cat.com

© 2020 Caterpillar
All rights reserved

Materials and specifications are subject to change without notice. Featured machines in photos may include additional equipment. See your Cat dealer for available options.

CAT, CATERPILLAR, LET'S DO THE WORK, their respective logos, "Caterpillar Corporate Yellow," the "Power Edge" and Cat "Modern Hex" trade dress as well as corporate and product identity used herein, are trademarks of Caterpillar and may not be used without permission.

AEXQ2563-01 (08-2020)
Replaces AEXQ2563
Build Number: 07B
(China)

