



# 326

## Hydraulic Excavator

# Technical Specifications

Configurations and features may vary by region. Please consult your Cat® dealer for availability in your area.

### Table of Contents

<b>Specifications</b> .....	<b>2</b>
Engine .....	2
Swing Mechanism .....	2
Weights .....	2
Track .....	2
Drive .....	2
Hydraulic System .....	2
Service Refill Capacities .....	2
Standards .....	3
Sound Performance .....	3
Operating Weights and Ground Pressures .....	3
Major Component Weights .....	4
Dimensions .....	5
Working Ranges and Forces .....	7
Reach Boom Lift Capacities – Counterweight: 4.6 mt (10,140 lb) .....	9
SLR Boom Lift Capacities – Counterweight: 7.4 mt (16,310 lb) .....	12
Bucket Specifications and Compatibility .....	18
Attachments Offering Guide .....	21
Thumb Specifications .....	31
<b>Standard and Optional Equipment</b> .....	<b>32</b>
<b>Dealer Installed Kits and Attachments</b> .....	<b>34</b>
<b>326 Environmental Declaration</b> .....	<b>35</b>

# 326 Hydraulic Excavator Specifications

## Engine

Engine Model	Cat® C7.1	
Net Power		
ISO 9249	149.8 kW	201 hp
ISO 9249 (DIN)	204 hp (metric)	
Engine Power		
ISO 14396	151 kW	202 hp
ISO 14396 (DIN)	205 hp (metric)	
Bore	105 mm	4 in
Stroke	135 mm	5 in
Displacement	7.01 L	428 in <sup>3</sup>
Biodiesel capability	Up to B20 <sup>(1)</sup>	

- Meets U.S. EPA Tier 4 Final, EU Stage V, and Japan 2014 emission standards.
- Recommended for use up to 4500 m (14,760 ft) altitude with engine power derate above 3000 m (9,840 ft).
- Advertised power is tested per the specified standard in effect at the time of manufacture.
- Net power advertised is the power available at the flywheel when the engine is equipped with fan, air intake system, exhaust system, and alternator.
- Engine speed at 2,200 rpm.

<sup>(1)</sup>Cat diesel engines are required to use ULSD (ultra-low sulfur diesel fuel with 15 ppm of sulfur or less) or ULSD blended with the following lower-carbon intensity fuels\*\* up to:

- ✓ 20% biodiesel FAME (fatty acid methyl ester)\*
- ✓ 100% renewable diesel, HVO (hydrogenated vegetable oil) and GTL (gas-to-liquid) fuels

Refer to guidelines for successful application. Please consult your Cat dealer or “Caterpillar Machine Fluids Recommendations” (SEBU6250) for details.

*\*Engines with no aftertreatment devices can use higher blends, up to 100% biodiesel (for use of blends higher than 20% biodiesel, consult your Cat dealer).*

*\*\*Tailpipe greenhouse gas emissions from lower-carbon intensity fuels are essentially the same as traditional fuels.*

## Swing Mechanism

Swing Speed	9.9 rpm	
Maximum Swing Torque	106 kN·m	78,180 lbf·ft

## Weights

Operating Weight	26 300 kg	57,900 lb
Operating Weight	29 700 kg	65,400 lb

- Long undercarriage, Reach boom, R2.95 m (9'7") stick, 1.54 m<sup>3</sup> (2.01 yd<sup>3</sup>) Heavy Duty (HD) bucket, 790 mm (31") triple grouser shoes and 4600 kg (10,140 lb) counterweight.
- Long undercarriage, Super Long Reach boom, SLR 7.85A (25'9") stick, 0.57 m<sup>3</sup> (0.75 yd<sup>3</sup>) Ditch Cleaning (DC) bucket, 790 mm (31") triple grouser shoes and 7400 kg (16,310 lb) counterweight.

## Track

Standard Track Shoes Width	790 mm	31 in
Optional Track Shoes Width	600 mm	24 in
Optional Track Shoes Width	700 mm	28 in
Number of Shoes (each side)	51	
Number of Track Rollers (each side)	8	
Number of Carrier Rollers (each side)	2	

## Drive

Gradeability	35°/70%	
Maximum Travel Speed	5.6 km/h	3.5 mph
Maximum Drawbar Pull	228 kN	51,256 lbf

## Hydraulic System

Main System – Maximum Flow – Implement	481 L/min (241 × 2 pumps)	127 gal/min (64 × 2 pumps)
Maximum Pressure – Equipment – Normal	35 000 kPa	5,075 psi
Maximum Pressure – Heavy Lift Mode/Auto Dig Boost	38 000 kPa	5,510 psi
Maximum Pressure – Travel	35 000 kPa	5,075 psi
Maximum Pressure – Swing	28 400 kPa	4,118 psi
Auxiliary Pump (optional) – Maximum Flow	56 L/min	15 gal/min
Auxiliary Pump (optional) – Maximum Pressure	14 000 kPa	2,031 psi
Boom Cylinder – Bore	135 mm	5 in
Boom Cylinder – Stroke	1305 mm	51 in
Stick Cylinder – Bore	140 mm	6 in
Stick Cylinder – Stroke	1660 mm	65 in
Bucket Cylinder – Bore	130 mm	5 in
Bucket Cylinder – Stroke	1156 mm	46 in

## Service Refill Capacities

Fuel Tank Capacity	474 L	125.2 gal
Cooling System	25 L	6.6 gal
Engine Oil (with filter)	25 L	6.6 gal
Swing Drive	11.5 L	3.0 gal
Final Drive (each)	4.5 L	1.2 gal
Hydraulic System (including tank)	310 L	81.9 gal
Hydraulic Tank	147 L	38.8 gal
Diesel Exhaust Fluid (DEF) Tank	41 L	10.8 gal

# 326 Hydraulic Excavator Specifications

## Standards

Brakes	ISO 10265:2008
Cab/Operator Protective Guards (OPG) (optional)	ISO 10262:1998 Level II
Cab/Rollover Protective Structure (ROPS)	ISO 12117-2:2008

## Sound Performance

ISO 6395:2008 (external)	103 dB(A)
ISO 6396:2008 (inside cab)	70 dB(A)

- Hearing protection may be needed when operating with an open operator station and cab (when not properly maintained or doors/windows open) for extended periods or in a noisy environment.

## Operating Weights and Ground Pressures

	600 mm (24") Single Grouser Shoes		700 mm (28") Triple Grouser Shoes		790 mm (31") Triple Grouser Shoes	
	Weight	Ground Pressure	Weight	Ground Pressure	Weight	Ground Pressure
	kg (lb)	kPa (psi)	kg (lb)	kPa (psi)	kg (lb)	kPa (psi)
<b>Base Machine with 4600 kg (10,140 lb) Counterweight and Long Undercarriage</b>						
Reach Boom + R2.95CB1 (9'8") Stick + 1.54 m <sup>3</sup> (2.01 yd <sup>3</sup> ) HD Bucket	25 600 (56,300)	51 (7.4)	26 000 (57,200)	44 (6.4)	26 300 (57,900)	40 (5.8)
Reach Boom + R3.6CB1 (11'10") Stick + 1.54 m <sup>3</sup> (2.01 yd <sup>3</sup> ) HD Bucket	25 800 (56,700)	51 (7.4)	26 200 (57,600)	45 (6.5)	26 500 (58,300)	40 (5.8)
<b>Base Machine with 7400 kg (16,310 lb) Counterweight and Long Undercarriage</b>						
Super Long Reach Boom + SLR 7.85A (25'9") Stick + 0.57 m <sup>3</sup> (0.75 yd <sup>3</sup> ) DC Bucket	29 000 (63,800)	58 (8.4)	29 400 (64,700)	50 (7.3)	29 700 (65,400)	45 (6.5)

All operating weights include a 90% fuel tank with 75 kg (165 lb) operator.

# 326 Hydraulic Excavator Specifications

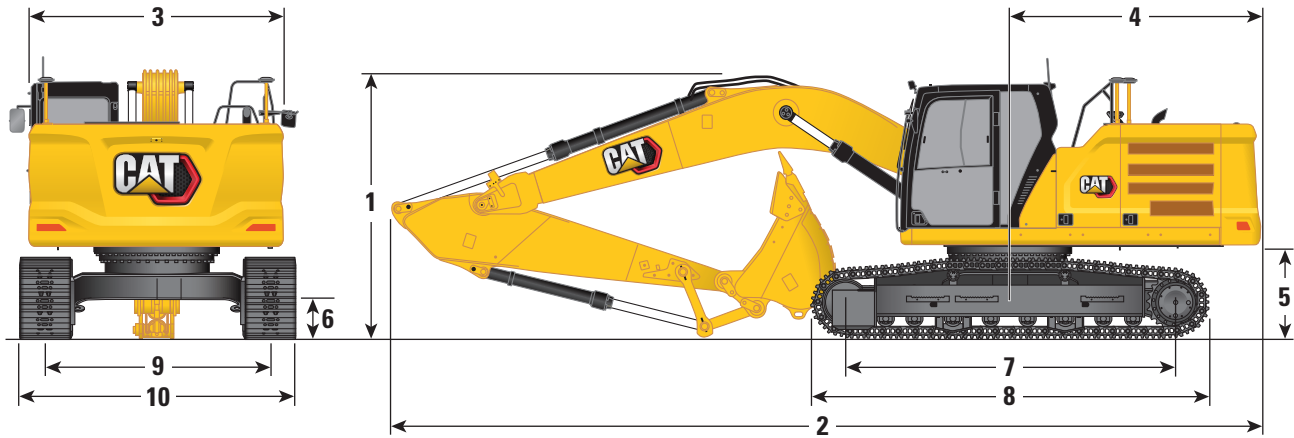
## Major Component Weights

	kg	lb
Base Machine Weight (including counterweight, upper frame, undercarriage and two boom cylinders – does not include boom, stick, bucket, stick cylinder, bucket cylinders, tracks, 90% fuel tank and 75 kg [165 lb] operator).		
With 4600 kg (10,140 lb) Counterweight and Long Undercarriage	17 250	38,010
With 7400 kg (16,310 lb) Counterweight and Long Undercarriage	19 980	44,040
Track Shoes:		
600 mm (24") Width, 14 mm (0.55") Thick, Single Grouser Track Shoes	3260	7,170
700 mm (28") Width, 12.5 mm (0.49") Thick, Triple Grouser Track Shoes	3670	8,080
790 mm (31") Width, 12.5 mm (0.49") Thick, Triple Grouser Track Shoes with Step Extension	4000	8,810
Two Boom Cylinders	460	1,010
Weight of 90% Fuel Tank and 75 kg (165 lb) Operator	470	1,020
Counterweights:		
4600 kg (10,140 lb) Counterweight	4600	10,140
7400 kg (16,310 lb) Counterweight	7400	16,310
Undercarriage:		
Long Undercarriage	5020	11,070
Booms (including lines, pins, stick cylinder):		
Reach Boom 5.9 m (19'4")	2050	4,520
Super Long Reach (SLR) Boom 10.2 m (33'6")	3190	7,020
Sticks (including lines, pins, bucket cylinder, bucket linkage):		
Reach Stick R2.95CB1 (9'8")	1310	2,870
Reach Stick R3.6CB1 (11'10")	1500	3,310
Super Long Reach Stick 7.85 (25'9")	1640	3,610
HP, MP, QC lines for Reach Stick R2.95CB1 (9'8")	90	190
Buckets (without linkage, with tips and side cutters):		
1.54 m <sup>3</sup> (2.01 yd <sup>3</sup> ) HD CB Linkage	1200	2,630
1.76 m <sup>3</sup> (2.30 yd <sup>3</sup> ) HD CB Linkage	1290	2,840
0.57 m <sup>3</sup> (0.75 yd <sup>3</sup> ) DC A Linkage	390	850
0.74 m <sup>3</sup> (0.97 yd <sup>3</sup> ) General Duty (GD) A Linkage	460	1,010
Quick Couplers:		
Pin Grabber Quick Coupler with Pins	530	2,650
Pin Grabber Quick Coupler without Pins	500	2,430

# 326 Hydraulic Excavator Specifications

## Dimensions

All dimensions are approximate and may vary depending on bucket selection.



### Boom Options

Reach Boom  
5.9 m (19'4")

### Stick Options

Reach Stick

	R2.95CB (9'8")		R3.6CB (11'10")	
<b>1</b> Machine Height:				
Top of Cab Height	3000 mm	9'10"	3000 mm	9'10"
Top of GNSS Antenna Height (if installed)	3030 mm	9'11"	3030 mm	9'11"
Top of OPG Height	3140 mm	10'4"	3140 mm	10'4"
Handrail Height	3000 mm	9'10"	3000 mm	9'10"
With Boom/Stick/Bucket Installed	3250 mm	10'8"	3520 mm	11'7"
With Boom/Stick Installed	3120 mm	10'3"	3310 mm	10'10"
With Boom Installed	3000 mm	9'10"	3000 mm	9'10"
<b>2</b> Machine Length:				
With Boom/Stick/Bucket Installed	10 060 mm	33'0"	10 060 mm	33'0"
With Boom/Stick Installed	10 040 mm	32'11"	10 060 mm	33'0"
With Boom Installed	8720 mm	28'7"	8720 mm	28'7"
<b>3</b> Upperframe Width	2940 mm	9'8"	2940 mm	9'8"
<b>4</b> Tail Swing Radius	3000 mm	9'10"	3000 mm	9'10"
<b>5</b> Counterweight Clearance	1060 mm	3'6"	1060 mm	3'6"
<b>6</b> Ground Clearance	440 mm	1'5"	440 mm	1'5"
<b>7</b> Track Length – Length to Center of Rollers	3830 mm	12'7"	3830 mm	12'7"
<b>8</b> Track Length – Crawler Overall Length	4640 mm	15'3"	4640 mm	15'3"
<b>9</b> Track Gauge	2590 mm	8'6"	2590 mm	8'6"
<b>10</b> Undercarriage Width:				
with 600 mm (24") Shoes	3190 mm	10'6"	3190 mm	10'6"
with 700 mm (28") Shoes	3290 mm	10'10"	3290 mm	10'10"
with 790 mm (31") Shoes with Steps	3380 mm	11'1"	3380 mm	11'1"
Bucket Type	HD		HD	
Bucket Capacity	1.54 m <sup>3</sup>	2.01 yd <sup>3</sup>	1.54 m <sup>3</sup>	2.01 yd <sup>3</sup>
Bucket Tip Radius	1660 mm	5'5"	1660 mm	5'5"

(continued on next page)

# 326 Hydraulic Excavator Specifications

## Dimensions *(continued)*

All dimensions are approximate and may vary depending on bucket selection.



### Boom Options

**SLR Boom**  
10.2 m (33'6")

### Stick Options

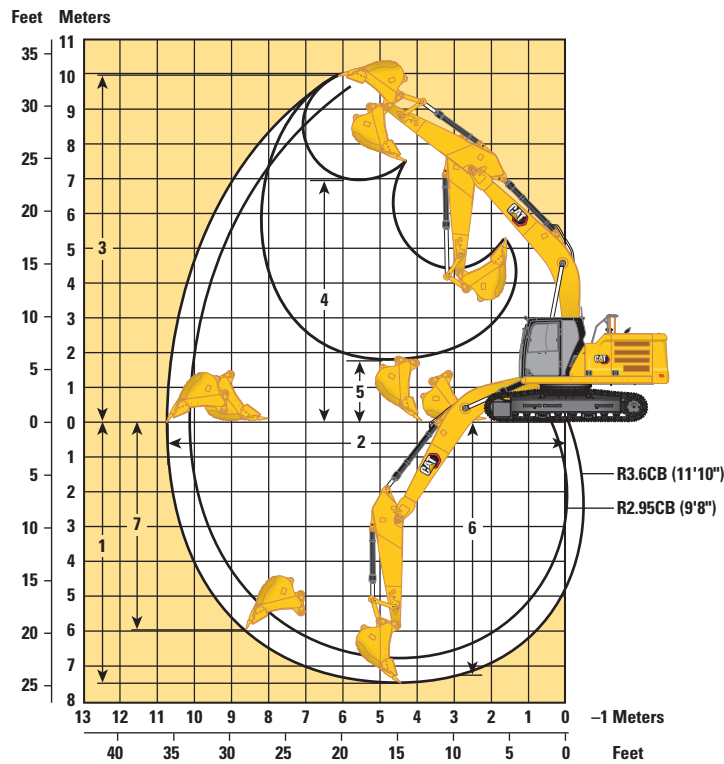
**SLR Stick**  
7.85A (25'9")

<b>1 Machine Height:</b>		
Top of Cab Height	3000 mm	9'10"
Top of GNSS Antenna Height (if installed)	3030 mm	9'11"
Top of OPG Height	3140 mm	10'4"
Handrail Height	3000 mm	9'10"
With Boom/Stick/Bucket Installed	3160 mm	10'4"
With Boom/Stick Installed	3160 mm	10'4"
With Boom Installed	3000 mm	9'10"
<b>2 Machine Length:</b>		
With Boom/Stick/Bucket Installed	14 350 mm	47'1"
With Boom/Stick Installed	14 350 mm	47'1"
With Boom Installed	13 250 mm	43'6"
<b>3 Upperframe Width</b>	2940 mm	9'8"
<b>4 Tail Swing Radius</b>	3000 mm	9'10"
<b>5 Counterweight Clearance</b>	1060 mm	3'6"
<b>6 Ground Clearance</b>	440 mm	1'5"
<b>7 Track Length – Length to Center of Rollers</b>	3830 mm	12'7"
<b>8 Track Length – Crawler Overall Length</b>	4640 mm	15'3"
<b>9 Track Gauge</b>	2590 mm	8'6"
<b>10 Undercarriage Width:</b>		
with 600 mm (24") Shoes	3190 mm	10'6"
with 700 mm (28") Shoes	3290 mm	10'10"
with 790 mm (31") Shoes with Steps	3380 mm	11'1"
Bucket Type	DC	
Bucket Capacity	0.57 m <sup>3</sup>	0.75 yd <sup>3</sup>
Bucket Tip Radius	1070 mm	3'6"

# 326 Hydraulic Excavator Specifications

## Working Ranges and Forces

All dimensions are approximate and may vary depending on bucket selection.



### Boom Options

Reach Boom  
5.9 m (19'4")

### Stick Options

Reach Stick

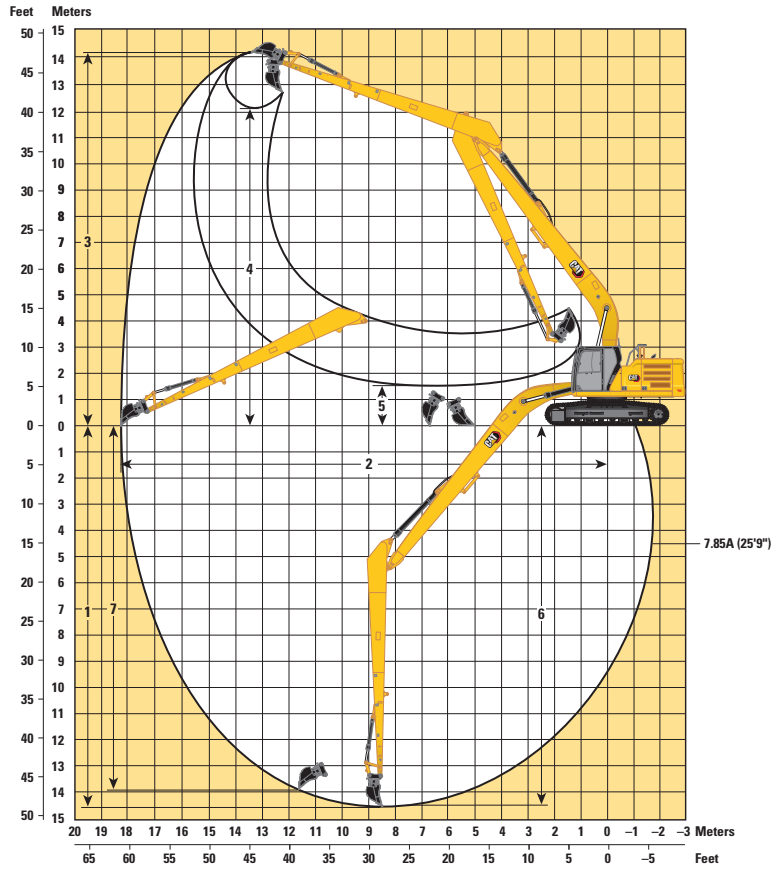
	R2.95CB (9'8")		R3.6CB (11'10")	
	mm	ft/in	mm	ft/in
1 Maximum Digging Depth	6820	22'5"	7470	24'6"
2 Maximum Reach at Ground Line	10 120	33'2"	10 730	35'2"
3 Maximum Cutting Height	9680	31'9"	9960	32'8"
4 Maximum Loading Height	6610	21'8"	6900	22'8"
5 Minimum Loading Height	2390	7'10"	1740	5'9"
6 Maximum Depth Cut for 2440 mm (8'0") Level Bottom	6650	21'10"	7330	24'1"
7 Maximum Vertical Wall Digging Depth	5340	17'6"	5960	19'7"
Bucket Digging Force (ISO)	166 kN	37,320 lbf	166 kN	37,320 lbf
Stick Digging Force (ISO)	121 kN	27,200 lbf	105 kN	23,600 lbf
Bucket Digging Force (ISO) – Auto Dig Boost	180 kN	40,520 lbf	180 kN	40,520 lbf
Stick Digging Force (ISO) – Auto Dig Boost	131 kN	29,530 lbf	114 kN	25,630 lbf
Bucket Type	HD		HD	
Bucket Capacity	1.54 m <sup>3</sup>	2.01 yd <sup>3</sup>	1.54 m <sup>3</sup>	2.01 yd <sup>3</sup>
Bucket Tip Radius	1660 mm	5'5"	1660 mm	5'5"

(continued on next page)

# 326 Hydraulic Excavator Specifications

## Working Ranges and Forces (continued)

All dimensions are approximate and may vary depending on bucket selection.



### Boom Options

**SLR Boom**  
**10.2 m (33'6")**

### Stick Options

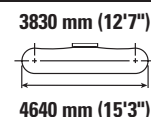
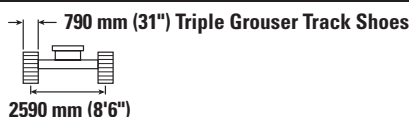
**SLR Stick**  
**7.85A (25'9")**

<b>1</b> Maximum Digging Depth	14 580 mm	47'10"
<b>2</b> Maximum Reach at Ground Line	18 280 mm	60'0"
<b>3</b> Maximum Cutting Height	14 210 mm	46'7"
<b>4</b> Maximum Loading Height	12 150 mm	39'10"
<b>5</b> Minimum Loading Height	1500 mm	4'11"
<b>6</b> Maximum Depth Cut for 2440 mm (8'0") Level Bottom	14 480 mm	47'6"
<b>7</b> Maximum Vertical Wall Digging Depth	13 980 mm	45'10"
Bucket Digging Force (ISO)	62 kN	13,830 lbf
Stick Digging Force (ISO)	45 kN	10,160 lbf
Bucket Type	DC	
Bucket Capacity	0.57 m <sup>3</sup>	0.75 yd <sup>3</sup>
Bucket Tip Radius	1070 mm	3'6"



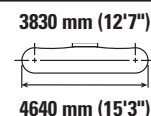
# 326 Hydraulic Excavator Specifications

## Reach Boom Lift Capacities – Counterweight: 4.6 mt (10,140 lb) – without Bucket, Heavy Lift: On



Reach mm ft/in	Unit	3000 mm/10'0"		4500 mm/15'0"		6000 mm/20'0"		7500 mm/25'0"		3830 mm (12'7") 4640 mm (15'3")		mm ft/in
7500 mm 25'0"	kg lb					*7100 *14,650	*7100 *14,650			*5900 *13,050	*5900 *13,050	6430 20'8"
6000 mm 20'0"	kg lb					*7250 *15,850	7200 15,400	*5650	5000	*5600 *12,350	5000 11,100	7510 24'5"
4500 mm 15'0"	kg lb			*9450 *20,350	*9450 *20,350	*8100 *17,550	6950 14,950	7300 15,650	4950 10,600	*5600 *12,300	4300 9,450	8180 26'9"
3000 mm 10'0"	kg lb			*12 100 *26,050	10 150 21,900	*9300 *20,150	6650 14,300	7150 15,350	4800 10,300	*5800 *12,750	3950 8,650	8540 27'11"
1500 mm 5'0"	kg lb			*14 450 *31,150	9550 20,600	9800 21,050	6350 13,700	7000 15,000	4650 10,000	5700 12,500	3800 8,350	8610 28'3"
0 mm 0'0"	kg lb			15 250 32,700	9250 19,900	9550 20,550	6150 13,250	6850 14,750	4550 9,750	5800 12,800	3850 8,500	8420 27'7"
-1500 mm -5'0"	kg lb	*11 350 *25,750	*11 350 *25,750	15 150 32,450	9150 19,700	9450 20,300	6050 13,050	6800 14,650	4500 9,650	6300 13,900	4150 9,200	7940 26'0"
-3000 mm -10'0"	kg lb	*18 550 *42,250	18 400 39,350	*14 350 *31,050	9250 19,850	9500 20,400	6100 13,100			7400 16,400	4850 10,800	7120 23'2"
-4500 mm -15'0"	kg lb	*16 000 *34,300	*16 000 *34,300	*11 750 *25,100	9450 20,350					*8750 *19,250	6600 14,850	5790 18'8"

## Reach Boom Lift Capacities – Counterweight: 4.6 mt (10,140 lb) – without Bucket, Heavy Lift: On



Reach mm ft/in	Unit	3000 mm/10'0"		4500 mm/15'0"		6000 mm/20'0"		7500 mm/25'0"		3830 mm (12'7") 4640 mm (15'3")		mm ft/in
7500 mm 25'0"	kg lb					*7100 *14,650	*7100 *14,650			*5900 *13,050	*5900 *13,050	6430 20'8"
6000 mm 20'0"	kg lb					*7250 *15,850	7100 15,250	*5650	4950	*5600 *12,350	4950 10,950	7510 24'5"
4500 mm 15'0"	kg lb			*9450 *20,350	*9450 *20,350	*8100 *17,550	6900 14,800	7200 15,500	4850 10,450	*5600 *12,300	4250 9,350	8180 26'9"
3000 mm 10'0"	kg lb			*12 100 *26,050	10 050 21,650	*9300 *20,150	6600 14,150	7050 15,150	4750 10,150	5800 *12,750	3900 8,550	8540 27'11"
1500 mm 5'0"	kg lb			*14 450 *31,150	9450 20,350	9650 20,800	6300 13,550	6900 14,850	4600 9,850	5600 12,350	3750 8,250	8610 28'3"
0 mm 0'0"	kg lb			15 100 32,300	9150 19,650	9450 20,300	6100 13,100	6800 14,550	4450 9,600	5750 12,650	3800 8,400	8420 27'7"
-1500 mm -5'0"	kg lb	*11 350 *25,750	*11 350 *25,750	15 000 32,050	9050 19,450	9350 20,050	6000 12,900	6750 14,500	4450 9,550	6200 13,700	4100 9,050	7940 26'0"
-3000 mm -10'0"	kg lb	*18 550 *42,250	18 200 38,900	*14 350 *31,050	9100 19,600	9350 20,150	6000 12,950			7300 16,200	4800 10,650	7120 23'2"
-4500 mm -15'0"	kg lb	*16 000 *34,300	*16 000 *34,300	*11 750 *25,100	9350 20,150					*8750 *19,250	6550 14,700	5790 18'8"



ISO 10567:2007



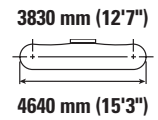
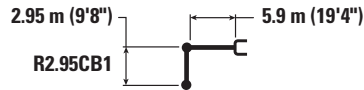
\* Indicates that the load is limited by hydraulic lifting capacity rather than tipping load. The above loads are in compliance with hydraulic excavator lift capacity standard ISO 10567:2007. They do not exceed 87% of hydraulic lifting capacity or 75% of tipping load. Weight of all lifting accessories must be deducted from the above lifting capacities. Lifting capacities are based on the machine standing on a firm, uniform supporting surface. The use of a work tool attachment point to handle/lift objects, could affect the machine lift performance.

Lift capacity stays with ±5% for all available track shoes.

Always refer to the appropriate Operation and Maintenance Manual for specific product information.

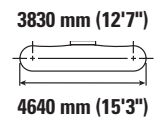
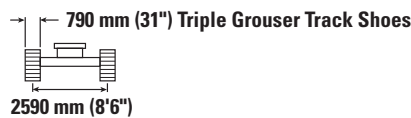
# 326 Hydraulic Excavator Specifications

## Reach Boom Lift Capacities – Counterweight: 4.6 mt (10,140 lb) – without Bucket, Heavy Lift: On



		3000 mm/10'0"		4500 mm/15'0"		6000 mm/20'0"		7500 mm/25'0"		3830 mm (12'7") 4640 mm (15'3")		mm ft/in
7500 mm 25'0"	kg lb					*7100 *14,650	7050 *14,650			*5900 *13,050	*5900 *13,050	6430 20'8"
6000 mm 20'0"	kg lb					*7250 *15,850	7000 15,050	*5650	4850	*5600 *12,350	4850 10,800	7510 24'5"
4500 mm 15'0"	kg lb			*9450 *20,350	*9450 *20,350	*8100 *17,550	6800 14,600	7100 15,250	4800 10,300	*5600 *12,300	4150 9,200	8180 26'9"
3000 mm 10'0"	kg lb			*12 100 *26,050	9900 21,400	*9300 *20,150	6500 13,950	6950 14,950	4650 10,000	5700 12,550	3850 8,400	8540 27'11"
1500 mm 5'0"	kg lb			*14 450 *31,150	9300 20,050	9500 20,450	6200 13,350	6800 14,600	4500 9,700	5550 12,150	3700 8,150	8610 28'3"
0 mm 0'0"	kg lb			14 850 31,800	9000 19,350	9300 19,950	6000 12,900	6650 14,350	4400 9,450	5650 12,450	3750 8,250	8420 27'7"
-1500 mm -5'0"	kg lb	*11 350 *25,750	*11 350 *25,750	14 750 31,600	8900 19,150	9200 19,750	5900 12,700	6600 14,250	4350 9,400	6100 13,500	4050 8,900	7940 26'0"
-3000 mm -10'0"	kg lb	*18 550 *42,250	17 950 38,350	*14 350 *31,050	9000 19,300	9200 19,850	5950 12,750			7200 15,950	4750 10,500	7120 23'2"
-4500 mm -15'0"	kg lb	*16 000 *34,300	*16 000 *34,300	*11 750 *25,100	9200 19,850					*8750 *19,250	6450 14,500	5790 18'8"

## Reach Boom Lift Capacities – Counterweight: 4.6 mt (10,140 lb) – without Bucket, Heavy Lift: On



		1500 mm/5'0"		3000 mm/10'0"		4500 mm/15'0"		6000 mm/20'0"		7500 mm/25'0"		9000 mm/30'0"		3830 mm (12'7") 4640 mm (15'3")		mm ft/in
7500 mm 25'0"	kg lb												*4600 *10,250	*4600 *10,250	7210 23'3"	
6000 mm 20'0"	kg lb								*6000 *12,600	5050 10,800			*4400 *9,750	4350 9,600	8190 26'8"	
4500 mm 15'0"	kg lb							*7200 *15,650	7000 15,100	*6750 *14,700	4950 10,600		*4400 *9,700	3800 8,350	8810 28'9"	
3000 mm 10'0"	kg lb			*16 600 *35,300	*16 600 *35,300	*10 700 *23,050	10 350 22,250	*8500 *18,400	6700 14,350	7150 15,350	4750 10,250	*5200	3600	*4550 *10,000	3500 7,700	9140 29'11"
1500 mm 5'0"	kg lb					*13 350 *28,750	9600 20,700	9800 21,000	6350 13,650	6950 14,900	4600 9,850	5250 11,300	3500 7,500	*4850 *10,650	3350 7,400	9210 30'2"
0 mm 0'0"	kg lb			*7050 *16,100	*7050 *16,100	*14 950 *32,350	9150 19,700	9500 20,350	6050 13,050	6800 14,550	4450 9,550	5200	3450	5150 11,350	3400 7,500	9030 29'7"
-1500 mm -5'0"	kg lb	*6450 *14,450	*6450 *14,450	*10 650 *24,150	*10 650 *24,150	14 950 32,050	9000 19,300	9300 20,000	5950 12,750	6700 14,350	4350 9,350			5500 12,150	3650 8,000	8590 28'1"
-3000 mm -10'0"	kg lb	*10 700 *24,000	*10 700 *24,000	*15 850 *35,950	*15 850 *35,950	*14 800 *32,050	9000 19,300	9300 19,950	5900 12,700	6700 14,400	4350 9,400			6300 13,950	4150 9,150	7830 25'6"
-4500 mm -15'0"	kg lb			*18 250 *39,250	*18 250 *39,250	*12 950 *27,850	9150 19,700	9450 20,300	6000 13,000					8100 *18,150	5250 11,750	6650 21'6"



ISO 10567:2007



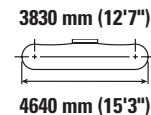
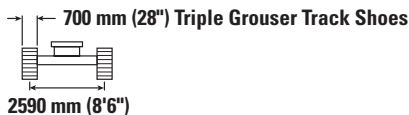
\* Indicates that the load is limited by hydraulic lifting capacity rather than tipping load. The above loads are in compliance with hydraulic excavator lift capacity standard ISO 10567:2007. They do not exceed 87% of hydraulic lifting capacity or 75% of tipping load. Weight of all lifting accessories must be deducted from the above lifting capacities. Lifting capacities are based on the machine standing on a firm, uniform supporting surface. The use of a work tool attachment point to handle/lift objects, could affect the machine lift performance.

Lift capacity stays with ±5% for all available track shoes.

Always refer to the appropriate Operation and Maintenance Manual for specific product information.

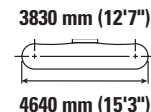
# 326 Hydraulic Excavator Specifications

## Reach Boom Lift Capacities – Counterweight: 4.6 mt (10,140 lb) – without Bucket, Heavy Lift: On



		1500 mm/5'0"		3000 mm/10'0"		4500 mm/15'0"		6000 mm/20'0"		7500 mm/25'0"		9000 mm/30'0"		mm ft/in		
7500 mm 25'0"	kg lb													*4600 *10,250	*4600 *10,250	7210 23'3"
6000 mm 20'0"	kg lb								*6000 *12,600	5000 10,700				*4400 *9,750	4300 9,500	8190 26'8"
4500 mm 15'0"	kg lb							*7200 *15,650	6950 14,950	*6750 *14,700	4900 10,450			*4400 *9,700	3750 8,250	8810 28'9"
3000 mm 10'0"	kg lb			*16 600 *35,300	*16 600 *35,300	*10 700 *23,050	10 250 22,050	*8500 *18,400	6600 14,200	7050 15,150	4700 10,100	*5200 3550		*4550 *10,000	3450 7,600	9140 29'11"
1500 mm 5'0"	kg lb					*13 350 *28,750	9500 20,450	9650 20,750	6250 13,450	6850 14,750	4550 9,750	5200 11,150	3450 7,400	*4850 *10,650	3350 7,300	9210 30'2"
0 mm 0'0"	kg lb			*7050 *16,100	*7050 *16,100	*14 950 *31,650	9050 19,450	9350 20,100	6000 12,900	6700 14,400	4400 9,400	5150 11,150	3400 7,400	5100 11,200	3350 7,400	9030 29'7"
-1500 mm -5'0"	kg lb	*6450 *14,450	*6450 *14,450	*10 650 *24,150	*10 650 *24,150	14 800 31,650	8850 19,050	9200 19,750	5850 12,600	6600 14,200	4300 9,250			5450 12,000	3600 7,900	8590 28'1"
-3000 mm -10'0"	kg lb	*10 700 *24,000	*10 700 *24,000	*15 850 *35,950	*15 850 *35,950	14 800 31,650	8850 19,050	9200 19,700	5850 12,550	6600 14,250	4300 9,300			6250 13,800	4100 9,000	7830 25'6"
-4500 mm -15'0"	kg lb			*18 250 *39,250	18 100 38,650	*12 950 *27,850	9050 19,450	9300 20,050	5950 12,850					8000 17,950	5200 11,600	6650 21'6"

## Reach Boom Lift Capacities – Counterweight: 4.6 mt (10,140 lb) – without Bucket, Heavy Lift: On



		1500 mm/5'0"		3000 mm/10'0"		4500 mm/15'0"		6000 mm/20'0"		7500 mm/25'0"		9000 mm/30'0"		mm ft/in		
7500 mm 25'0"	kg lb													*4600 *10,250	*4600 *10,250	7210 23'3"
6000 mm 20'0"	kg lb									*6000 *12,600	4900 10,550			*4400 *9,750	4200 9,350	8190 26'8"
4500 mm 15'0"	kg lb							*7200 *15,650	6850 14,750	*6750 *14,700	4800 10,300			*4400 *9,700	3700 8,100	8810 28'9"
3000 mm 10'0"	kg lb			*16 600 *35,300	*16 600 *35,300	*10 700 *23,050	10 100 21,750	*8500 *18,400	6500 14,000	6950 14,900	4650 9,950	*5200 3500		*4550 *10,000	3400 7,450	9140 29'11"
1500 mm 5'0"	kg lb					*13 350 *28,750	9350 20,150	9500 20,450	6150 13,250	6750 14,500	4450 9,600	5100 11,000	3400 7,300	*4850 *10,650	3300 7,200	9210 30'2"
0 mm 0'0"	kg lb			*7050 *16,100	*7050 *16,100	14 800 31,650	8900 19,150	9200 19,800	5900 12,700	6600 14,150	4300 9,250	5050 11,000	3350 7,300	5000 11,050	3300 7,250	9030 29'7"
-1500 mm -5'0"	kg lb	*6450 *14,450	*6450 *14,450	*10 650 *24,150	*10 650 *24,150	14 550 31,150	8750 18,750	9050 19,450	5750 12,400	6500 13,950	4250 9,100			5350 11,800	3550 7,750	8590 28'1"
-3000 mm -10'0"	kg lb	*10 700 *24,000	*10 700 *24,000	*15 850 *35,950	*15 850 *35,950	14 550 31,200	8750 18,800	9050 19,400	5750 12,350	6500 14,000	4250 9,150			6150 13,550	4000 8,850	7830 25'6"
-4500 mm -15'0"	kg lb			*18 250 *39,250	17 800 38,100	*12 950 *27,850	8900 19,150	9150 19,750	5850 12,650					7900 17,650	5100 11,450	6650 21'6"



ISO 10567:2007



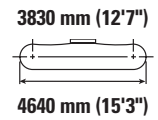
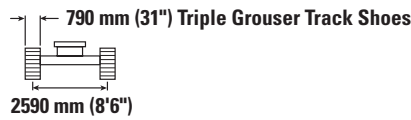
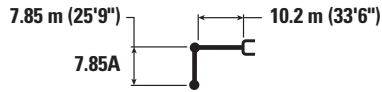
\* Indicates that the load is limited by hydraulic lifting capacity rather than tipping load. The above loads are in compliance with hydraulic excavator lift capacity standard ISO 10567:2007. They do not exceed 87% of hydraulic lifting capacity or 75% of tipping load. Weight of all lifting accessories must be deducted from the above lifting capacities. Lifting capacities are based on the machine standing on a firm, uniform supporting surface. The use of a work tool attachment point to handle/lift objects, could affect the machine lift performance.

Lift capacity stays with ±5% for all available track shoes.

Always refer to the appropriate Operation and Maintenance Manual for specific product information.

# 326 Hydraulic Excavator Specifications

## SLR Boom Lift Capacities – Counterweight: 7.4 mt (16,310 lb) – without Bucket, Heavy Lift: Off



Boom Length	1500 mm/5'0"		3000 mm/10'0"		4500 mm/15'0"		6000 mm/20'0"		7500 mm/25'0"		9000 mm/30'0"		mm ft/in			
	kg lb	kg lb	kg lb	kg lb	kg lb	kg lb	kg lb	kg lb	kg lb	kg lb	kg lb	kg lb	kg lb	mm ft/in		
12 000 mm 40'0"													*1300 *2,850	*1300 *2,850	13 940 45'3"	
10 500 mm 35'0"													*1250 *2,700	*1250 *2,700	14 930 48'7"	
9000 mm 30'0"													*1200 *2,650	*1200 *2,650	15 720 51'4"	
7500 mm 25'0"													*1200 *2,650	*1200 *2,650	16 330 53'5"	
6000 mm 20'0"													*1200 *2,650	*1200 *2,650	16 780 54'11"	
4500 mm 15'0"													*1250 *2,700	*1250 *2,700	17 090 56'0"	
3000 mm 10'0"			*4800 *4800									*3150 *6,850	*3150 *6,850	*1300 *2,800	*1300 *2,800	17 260 56'7"
1500 mm 5'0"			*1500 *3,500	*1500 *3,500	*5400 *12,750	*5400 *12,750	*5700 *12,200	*5700 *12,200	*4400 *9,450	*4400 *9,450	*3650 *7,850	*3650 *7,850	*1350 *2,900	*1350 *2,900	17 300 56'8"	
0 mm 0'0"			*1600 *3,600	*1600 *3,600	*3600 *8,250	*3600 *8,250	*6600 *14,250	6400 13,850	*5000 *10,800	4850 10,400	*4050 *8,750	3800 8,200	*1400 *3,050	1350 2,950	17 200 56'5"	
-1500 mm -5'0"	*1550 *3,400	*1550 *3,400	*2050 *4,600	*2050 *4,600	*3450 *7,850	*3450 *7,850	*6500 *14,950	5900 12,750	*5500 *11,900	4450 9,650	*4450 *9,600	3550 7,600	*1500 *3,300	1350 2,950	16 970 55'7"	
-3000 mm -10'0"	*2150 *4,750	*2150 *4,750	*2650 *5,900	*2650 *5,900	*3800 *8,550	*3800 *8,550	*6200 *14,100	5650 12,150	*5900 *12,700	4250 9,100	*4750 *10,250	3350 7,200	*1650 *3,550	1350 3,000	16 610 54'5"	
-4500 mm -15'0"	*2750 *6,100	*2750 *6,100	*3250 *7,300	*3250 *7,300	*4350 *9,800	*4350 *9,800	*6500 *14,750	5500 11,850	*6100 *13,200	4100 8,800	*4950 *10,700	3200 6,900	*1800 *3,950	1450 3,150	16 090 52'8"	
-6000 mm -20'0"	*3350 *7,500	*3350 *7,500	*3950 *8,800	*3950 *8,800	*5050 *11,400	*5050 *11,400	*7150 *16,250	5500 11,850	*6200 *13,400	4050 8,700	*5050 *11,900	3150 6,800	*2050 *4,500	1550 3,350	15 410 50'4"	
-7500 mm -25'0"	*4050 *9,000	*4050 *9,000	*4700 *10,550	*4700 *10,550	*5900 *13,300	*5900 *13,300	*7800 *16,850	5550 11,950	*6150 *13,300	4050 8,750	*5050 *10,900	3150 6,800	*2350 *5,250	1700 3,700	14 540 47'5"	
-9000 mm -30'0"	*4750 *10,650	*4750 *10,650	*5550 *12,450	*5550 *12,450	*6900 *15,650	*6900 *15,650	*7450 *16,100	5700 12,250	*5950 *12,850	4150 8,900	*4900 *10,550	3200 6,950	*2900 *6,450	1900 4,250	13 450 43'8"	
-10 500 mm -35'0"	*5550 *12,450	*5550 *12,450	*6500 *14,700	*6500 *14,700	*8200 *18,600	*8200 *18,600	*6900 *14,800	5900 12,750	*5550 *11,900	4300 9,250	*4600 *9,800	3350 7,200	*3150 *6,900	2300 5,200	12 080 39'0"	
-12 000 mm -40'0"			*7650 *17,350	*7650 *17,350	*7700 *16,300	*7700 *16,300	*6000 *12,750	*6000 *12,750	*4850 *10,250	4500 9,800	*3950 *8,300	3550 7,700	*3300 *7,250	3000 6,900	10 300 32'10"	



ISO 10567:2007



\* Indicates that the load is limited by hydraulic lifting capacity rather than tipping load. The above loads are in compliance with hydraulic excavator lift capacity standard ISO 10567:2007. They do not exceed 87% of hydraulic lifting capacity or 75% of tipping load. Weight of all lifting accessories must be deducted from the above lifting capacities. Lifting capacities are based on the machine standing on a firm, uniform supporting surface. The use of a work tool attachment point to handle/lift objects, could affect the machine lift performance.

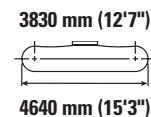
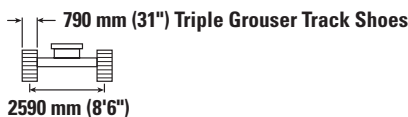
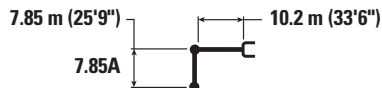
Lift capacity stays with ±5% for all available track shoes.

Always refer to the appropriate Operation and Maintenance Manual for specific product information.

(continued on next page)

# 326 Hydraulic Excavator Specifications

## SLR Boom Lift Capacities – Counterweight: 7.4 mt (16,310 lb) – without Bucket, Heavy Lift: Off (continued)



Boom Length	Unit	10 500 mm/35'0"		12 000 mm/40'0"		13 500 mm/45'0"		15 000 mm/50'0"		16 500 mm/55'0"		mm ft/in		
		kg lb	kg lb	kg lb	kg lb	kg lb	kg lb	kg lb	kg lb	kg lb	kg lb	kg lb	kg lb	
12 000 mm 40'0"	kg lb					*1750 *3,050	*1750 *3,050					*1300 *2,850	*1300 *2,850	13 940 45'3"
10 500 mm 35'0"	kg lb					*1900 *4,150	*1900 *4,150					*1250 *2,700	*1250 *2,700	14 930 48'7"
9000 mm 30'0"	kg lb					*1900 *4,200	*1900 *4,200	*1950 *3,700	*1950 *3,700			*1200 *2,650	*1200 *2,650	15 720 51'4"
7500 mm 25'0"	kg lb					*2000 *4,300	*2000 *4,300	*2000 *4,350	*2000 *4,350			*1200 *2,650	*1200 *2,650	16 330 53'5"
6000 mm 20'0"	kg lb			*4,650 *4,650	*4,650 *4,650	*2100 *4,550	*2100 *4,550	*2050 *4,500	*2050 4,400	*1600 *1600		*1200 *2,650	*1200 *2,650	16 780 54'11"
4500 mm 15'0"	kg lb			*2350 *5,100	*2350 *5,100	*2250 *4,850	*2250 *4,850	*2150 *4,700	2000 4,250	*2000 *3,700	1650 3,450	*1250 *2,700	*1250 *2,700	17 090 56'0"
3000 mm 10'0"	kg lb	*2800 *6,100	*2800 *6,100	*2550 *5,550	*2550 *5,550	*2400 *5,200	2350 5,000	*2250 *4,950	1900 4,050	*2200 *4,350	1550 3,300	*1300 *2,800	*1300 *2,800	17 260 56'7"
1500 mm 5'0"	kg lb	*3150 *6,800	*3150 *6,800	*2800 *6,050	2700 5,750	*2550 *5,550	2200 4,700	*2400 *5,200	1850 3,900	*2300 *4,700	1500 3,200	*1350 *2,900	*1350 *2,900	17 300 56'8"
0 mm 0'0"	kg lb	*3450 *7,450	3050 6,600	*3050 *6,550	2500 5,400	*2750 *5,950	2100 4,450	*2550 *5,500	1750 3,700	2350 *4,700	1450 3,100	*1400 *3,050	1350 2,950	17 200 56'5"
-1500 mm -5'0"	kg lb	*3750 *8,100	2900 6,150	*3250 *7,050	2400 5,100	*2900 *6,300	2000 4,250	*2650 *5,750	1650 3,550	2300 *4,150	1400 3,000	*1500 *3,300	1350 2,950	16 970 55'7"
-3000 mm -10'0"	kg lb	*3950 *8,600	2750 5,850	*3450 *7,450	2250 4,850	*3050 6,550	1900 4,050	2600 5,600	1600 3,450	*1850 *1850	1400	*1650 *3,550	1350 3,000	16 610 54'5"
-4500 mm -15'0"	kg lb	*4150 *8,950	2650 5,650	3500 7,550	2200 4,700	3000 6,450	1850 3,950	2600 5,550	1600 3,400			*1800 *3,950	1450 3,150	16 090 52'8"
-6000 mm -20'0"	kg lb	4150 8,950	2550 5,500	3500 7,500	2150 4,600	2950 6,400	1850 3,900	2600 *5,150	1600 3,400			*2050 *4,500	1550 3,350	15 410 50'4"
-7500 mm -25'0"	kg lb	4150 8,950	2550 5,500	3500 7,500	2150 4,600	3000 6,450	1850 3,950					*2350 *5,250	1700 3,700	14 540 47'5"
-9000 mm -30'0"	kg lb	*4150 *8,850	2600 5,650	*3500 *7,500	2200 4,750							*2900 *6,450	1900 4,250	13 450 43'8"
-10 500 mm -35'0"	kg lb	*3850 *8,150	2750 5,900	*3150	2300							*3150 *6,900	2300 5,200	12 080 39'0"
-12 000 mm -40'0"	kg lb											*3300 *7,250	3000 6,900	10 300 32'10"



ISO 10567:2007



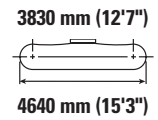
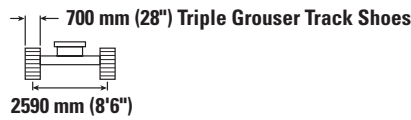
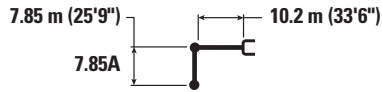
\* Indicates that the load is limited by hydraulic lifting capacity rather than tipping load. The above loads are in compliance with hydraulic excavator lift capacity standard ISO 10567:2007. They do not exceed 87% of hydraulic lifting capacity or 75% of tipping load. Weight of all lifting accessories must be deducted from the above lifting capacities. Lifting capacities are based on the machine standing on a firm, uniform supporting surface. The use of a work tool attachment point to handle/lift objects, could affect the machine lift performance.

Lift capacity stays with ±5% for all available track shoes.

Always refer to the appropriate Operation and Maintenance Manual for specific product information.

# 326 Hydraulic Excavator Specifications

## SLR Boom Lift Capacities – Counterweight: 7.4 mt (16,310 lb) – without Bucket, Heavy Lift: Off



Boom Length	1500 mm/5'0"		3000 mm/10'0"		4500 mm/15'0"		6000 mm/20'0"		7500 mm/25'0"		9000 mm/30'0"		mm ft/in			
	kg lb	kg lb	kg lb	kg lb	kg lb	kg lb	kg lb	kg lb	kg lb	kg lb	kg lb	kg lb	kg lb	mm ft/in		
12 000 mm 40'0"													*1300 *2,850	*1300 *2,850	13 940 45'3"	
10 500 mm 35'0"													*1250 *2,700	*1250 *2,700	14 930 48'7"	
9000 mm 30'0"													*1200 *2,650	*1200 *2,650	15 720 51'4"	
7500 mm 25'0"													*1200 *2,650	*1200 *2,650	16 330 53'5"	
6000 mm 20'0"													*1200 *2,650	*1200 *2,650	16 780 54'11"	
4500 mm 15'0"													*1250 *2,700	*1250 *2,700	17 090 56'0"	
3000 mm 10'0"			*4800 *10,600	*4800 *10,600								*3150 *6,850	*3150 *6,850	*1300 *2,800	*1300 *2,800	17 260 56'7"
1500 mm 5'0"			*1500 *3,300	*1500 *3,300	*5400 *12,000	*5400 *12,000	*5700 *12,500	*5700 *12,500	*4400 *9,700	*4400 *9,700	*3650 *8,000	*3650 *8,000	*1350 *2,900	*1350 *2,900	17 300 56'8"	
0 mm 0'0"			*1600 *3,600	*1600 *3,600	*3600 *8,000	*3600 *8,000	*6600 *14,500	6350 13,650	*5000 *10,800	4800 10,300	*4050 *8,750	3750 8,100	*1400 *3,050	1350 2,900	17 200 56'5"	
-1500 mm -5'0"	*1550 *3,400	*1550 *3,400	*2050 *4,600	*2050 *4,600	*3450 *7,850	*3450 *7,850	*6500 *14,950	5850 12,600	*5500 *11,900	4400 9,500	*4450 *9,600	3500 7,500	*1500 *3,300	1350 2,900	16 970 55'7"	
-3000 mm -10'0"	*2150 *4,750	*2150 *4,750	*2650 *5,900	*2650 *5,900	*3800 *8,550	*3800 *8,550	*6200 *14,100	5550 12,000	*5900 *12,700	4150 9,000	*4750 *10,250	3300 7,100	*1650 *3,550	1350 2,950	16 610 54'5"	
-4500 mm -15'0"	*2750 *6,100	*2750 *6,100	*3250 *7,300	*3250 *7,300	*4350 *9,800	*4350 *9,800	*6500 *14,750	5450 11,700	*6100 *13,200	4050 8,700	*4950 *10,700	3200 6,800	*1800 *3,950	1400 3,100	16 090 52'8"	
-6000 mm -20'0"	*3350 *7,500	*3350 *7,500	*3950 *8,800	*3950 *8,800	*5050 *11,400	*5050 *11,400	*7150 *16,250	5400 11,650	*6200 *13,400	4000 8,550	*5050 *10,900	3100 6,700	*2050 *4,500	1500 3,300	15 410 50'4"	
-7500 mm -25'0"	*4050 *9,000	*4050 *9,000	*4700 *10,550	*4700 *10,550	*5900 *13,300	*5900 *13,300	*7800 *16,850	5500 11,800	*6150 *13,300	4000 8,600	*5050 *10,900	3100 6,700	*2350 *5,250	1650 3,650	14 540 47'5"	
-9000 mm -30'0"	*4750 *10,650	*4750 *10,650	*5550 *12,450	*5550 *12,450	*6900 *15,650	*6900 *15,650	*7450 *16,100	5600 12,100	*5950 *12,850	4100 8,800	*4900 *10,550	3150 6,850	*2900 *6,450	1900 4,200	13 450 43'8"	
-10 500 mm -35'0"	*5550 *12,450	*5550 *12,450	*6500 *14,700	*6500 *14,700	*8200 *18,600	*8200 *18,600	*6900 *14,800	5850 12,600	*5550 *11,900	4250 9,150	*4600 *9,800	3300 7,100	*3150 *6,900	2300 5,100	12 080 39'0"	
-12 000 mm -40'0"			*7650 *17,350	*7650 *17,350	*7700 *16,300	*7700 *16,300	*6000 *12,750	*6000 *12,750	*4850 *10,250	4450 9,700	*3950 *8,300	3500 7,600	*3300 *7,250	2950 6,800	10 300 32'10"	



ISO 10567:2007



\* Indicates that the load is limited by hydraulic lifting capacity rather than tipping load. The above loads are in compliance with hydraulic excavator lift capacity standard ISO 10567:2007. They do not exceed 87% of hydraulic lifting capacity or 75% of tipping load. Weight of all lifting accessories must be deducted from the above lifting capacities. Lifting capacities are based on the machine standing on a firm, uniform supporting surface. The use of a work tool attachment point to handle/lift objects, could affect the machine lift performance.

Lift capacity stays with ±5% for all available track shoes.

Always refer to the appropriate Operation and Maintenance Manual for specific product information.

(continued on next page)

# 326 Hydraulic Excavator Specifications

## SLR Boom Lift Capacities – Counterweight: 7.4 mt (16,310 lb) – without Bucket, Heavy Lift: Off (continued)

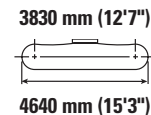
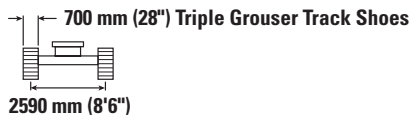
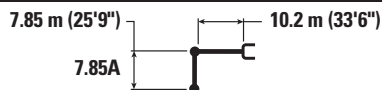


Diagram	10 500 mm/35'0"		12 000 mm/40'0"		13 500 mm/45'0"		15 000 mm/50'0"		16 500 mm/55'0"		Diagram		
	kg	lb	kg	lb	kg	lb	kg	lb	kg	lb	kg	lb	mm
12 000 mm 40'0"					*1750 *3,050	*1750 *3,050					*1300 *2,850	*1300 *2,850	13 940 45'3"
10 500 mm 35'0"					*1900 *4,150	*1900 *4,150					*1250 *2,700	*1250 *2,700	14 930 48'7"
9000 mm 30'0"					*1900 *4,200	*1900 *4,200	*1950 *3,700	*1950 *3,700			*1200 *2,650	*1200 *2,650	15 720 51'4"
7500 mm 25'0"					*2000 *4,300	*2000 *4,300	*2000 *4,350	*2000 *4,350			*1200 *2,650	*1200 *2,650	16 330 53'5"
6000 mm 20'0"			*4,650	*4,650	*2100 *4,550	*2100 *4,550	*2050 *4,500	2050 4,350	*1600	*1600	*1200 *2,650	*1200 *2,650	16 780 54'11"
4500 mm 15'0"			*2350 *5,100	*2350 *5,100	*2250 *4,850	*2250 *4,850	*2150 *4,700	2000 4,200	*2000 *3,700	1600 3,400	*1250 *2,700	*1250 *2,700	17 090 56'0"
3000 mm 10'0"	*2800 *6,100	*2800 *6,100	*2550 *5,550	*2550 *5,550	*2400 *5,200	2300 4,900	*2250 *4,950	1900 4,000	*2200 *4,350	1550 3,250	*1300 *2,800	*1300 *2,800	17 260 56'7"
1500 mm 5'0"	*3150 *6,800	*3150 *6,800	*2800 *6,050	2650 5,700	*2550 *5,550	2200 4,650	*2400 *5,200	1800 3,850	*2300 *4,700	1500 3,150	*1350 *2,900	*1350 *2,900	17 300 56'8"
0 mm 0'0"	*3450 *7,450	3050 6,500	*3050 *6,550	2500 5,300	*2750 *5,950	2050 4,400	*2550 *5,500	1700 3,650	2350 *4,700	1450 3,050	*1400 *3,050	1350 2,900	17 200 56'5"
-1500 mm -5'0"	*3750 *8,100	2850 6,100	*3250 *7,050	2350 5,000	*2900 *6,300	1950 4,200	2650 5,650	1650 3,500	2300 *4,150	1400 2,950	*1500 *3,300	1350 2,900	16 970 55'7"
-3000 mm -10'0"	*3950 *8,600	2700 5,750	*3450 *7,450	2250 4,750	3000 6,450	1900 4,000	2600 5,550	1600 3,400	*1850	1350	*1650 *3,550	1350 2,950	16 610 54'5"
-4500 mm -15'0"	*4150 *8,950	2600 5,550	3500 7,450	2150 4,600	2950 6,350	1800 3,900	2550 5,500	1550 3,350			*1800 *3,950	1400 3,100	16 090 52'8"
-6000 mm -20'0"	4100 8,850	2550 5,450	3450 7,400	2100 4,550	2950 6,300	1800 3,850	2550 *5,150	1550 3,350			*2050 *4,500	1500 3,300	15 410 50'4"
-7500 mm -25'0"	4100 8,850	2550 5,450	3450 7,400	2100 4,550	2950 6,350	1800 3,900					*2350 *5,250	1650 3,650	14 540 47'5"
-9000 mm -30'0"	4150 *8,850	2600 5,550	3500 *7,500	2150 4,650							*2900 *6,450	1900 4,200	13 450 43'8"
-10 500 mm -35'0"	*3850 *8,150	2700 5,800	*3150	2300							*3150 *6,900	2300 5,100	12 080 39'0"
-12 000 mm -40'0"											*3300 *7,250	2950 6,800	10 300 32'10"



ISO 10567:2007



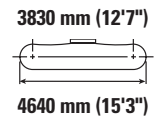
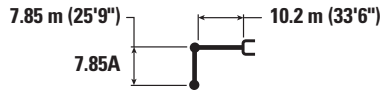
\* Indicates that the load is limited by hydraulic lifting capacity rather than tipping load. The above loads are in compliance with hydraulic excavator lift capacity standard ISO 10567:2007. They do not exceed 87% of hydraulic lifting capacity or 75% of tipping load. Weight of all lifting accessories must be deducted from the above lifting capacities. Lifting capacities are based on the machine standing on a firm, uniform supporting surface. The use of a work tool attachment point to handle/lift objects, could affect the machine lift performance.

Lift capacity stays with ±5% for all available track shoes.

Always refer to the appropriate Operation and Maintenance Manual for specific product information.

# 326 Hydraulic Excavator Specifications

## SLR Boom Lift Capacities – Counterweight: 7.4 mt (16,310 lb) – without Bucket, Heavy Lift: Off



Boom Length	1500 mm/5'0"		3000 mm/10'0"		4500 mm/15'0"		6000 mm/20'0"		7500 mm/25'0"		9000 mm/30'0"		mm ft/in			
	kg lb	kg lb	kg lb	kg lb	kg lb	kg lb	kg lb	kg lb	kg lb	kg lb	kg lb	kg lb	kg lb	mm ft/in		
12 000 mm 40'0"													*1300 *2,850	*1300 *2,850	13 940 45'3"	
10 500 mm 35'0"													*1250 *2,700	*1250 *2,700	14 930 48'7"	
9000 mm 30'0"													*1200 *2,650	*1200 *2,650	15 720 51'4"	
7500 mm 25'0"													*1200 *2,650	*1200 *2,650	16 330 53'5"	
6000 mm 20'0"													*1200 *2,650	*1200 *2,650	16 780 54'11"	
4500 mm 15'0"													*1250 *2,700	*1250 *2,700	17 090 56'0"	
3000 mm 10'0"			*4800	*4800								*3150 *6,850	*3150 *6,850	*1300 *2,800	*1300 *2,800	17 260 56'7"
1500 mm 5'0"			*1500 *3,500	*1500 *3,500	*5400 *12,750	*5400 *12,750	*5700 *12,200	*5700 *12,200	*4400 *9,450	*4400 *9,450	*3650 *7,850	*3650 *7,850	*1350 *2,900	*1350 *2,900	17 300 56'8"	
0 mm 0'0"			*1600 *3,600	*1600 *3,600	*3600 *8,250	*3600 *8,250	*6600 *14,250	6250 13,450	*5000 *10,800	4700 10,150	*4050 *8,750	3700 7,950	*1400 *3,050	1300 2,850	17 200 56'5"	
-1500 mm -5'0"	kg lb	*1550 *3,400	*1550 *3,400	*2050 *4,600	*2050 *4,600	*3450 *7,850	*3450 *7,850	*6500 *14,950	5750 12,400	*5500 *11,900	4350 9,350	*4450 *9,600	3450 7,400	*1500 *3,300	1300 2,850	16 970 55'7"
-3000 mm -10'0"	kg lb	*2150 *4,750	*2150 *4,750	*2650 *5,900	*2650 *5,900	*3800 *8,550	*3800 *8,550	*6200 *14,100	5500 11,800	*5900 *12,700	4100 8,850	*4750 *10,250	3250 6,950	*1650 *3,550	1300 2,900	16 610 54'5"
-4500 mm -15'0"	kg lb	*2750 *6,100	*2750 *6,100	*3250 *7,300	*3250 *7,300	*4350 *9,800	*4350 *9,800	*6500 *14,750	5350 11,500	*6100 *13,200	3950 8,550	*4950 *10,700	3100 6,700	*1800 *3,950	1400 3,000	16 090 52'8"
-6000 mm -20'0"	kg lb	*3350 *7,500	*3350 *7,500	*3950 *8,800	*3950 *8,800	*5050 *11,400	*5050 *11,400	*7150 *16,250	5350 11,450	*6200 *13,400	3900 8,400	5000 10,750	3050 6,600	*2050 *4,500	1500 3,250	15 410 50'4"
-7500 mm -25'0"	kg lb	*4050 *9,000	*4050 *9,000	*4700 *10,550	*4700 *10,550	*5900 *13,300	*5900 *13,300	*7800 *16,850	5400 11,600	*6150 *13,300	3950 8,450	5000 10,750	3050 6,600	*2350 *5,250	1650 3,600	14 540 47'5"
-9000 mm -30'0"	kg lb	*4750 *10,650	*4750 *10,650	*5550 *12,450	*5550 *12,450	*6900 *15,650	*6900 *15,650	*7450 *16,100	5550 11,900	*5950 *12,850	4000 8,650	*4900 *10,550	3100 6,700	*2900 *6,450	1850 4,150	13 450 43'8"
-10 500 mm -35'0"	kg lb	*5550 *12,450	*5550 *12,450	*6500 *14,700	*6500 *14,700	*8200 *18,600	*8200 *18,600	*6900 *14,800	5750 12,400	*5550 *11,900	4150 9,000	*4600 *9,800	3250 7,000	*3150 *6,900	2250 5,050	12 080 39'0"
-12 000 mm -40'0"	kg lb			*7650 *17,350	*7650 *17,350	*7700 *16,300	*7700 *16,300	*6000 *12,750	*6000 *12,750	*4850 *10,250	4400 9,550	*3950 *8,300	3450 7,500	*3300 *7,250	2900 6,700	10 300 32'10"



ISO 10567:2007



\* Indicates that the load is limited by hydraulic lifting capacity rather than tipping load. The above loads are in compliance with hydraulic excavator lift capacity standard ISO 10567:2007. They do not exceed 87% of hydraulic lifting capacity or 75% of tipping load. Weight of all lifting accessories must be deducted from the above lifting capacities. Lifting capacities are based on the machine standing on a firm, uniform supporting surface. The use of a work tool attachment point to handle/lift objects, could affect the machine lift performance.

Lift capacity stays with ±5% for all available track shoes.

Always refer to the appropriate Operation and Maintenance Manual for specific product information.

(continued on next page)



# 326 Hydraulic Excavator Specifications

## SLR Boom Lift Capacities – Counterweight: 7.4 mt (16,310 lb) – without Bucket, Heavy Lift: Off (continued)

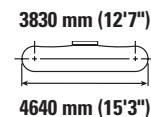
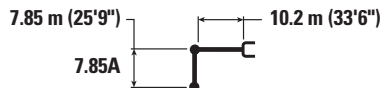


Diagram	10 500 mm/35'0"		12 000 mm/40'0"		13 500 mm/45'0"		15 000 mm/50'0"		16 500 mm/55'0"		Diagram						
	kg	lb	kg	lb	kg	lb	kg	lb	kg	lb	kg	lb	mm	ft/in			
12 000 mm 40'0"					*1750	*1750					*1300	*1300		13 940			
	kg				*3,050	*3,050					*2,850	*2,850		45'3"			
10 500 mm 35'0"					*1900	*1900					*1250	*1250		14 930			
	kg				*4,150	*4,150					*2,700	*2,700		48'7"			
9000 mm 30'0"					*1900	*1900	*1950	*1950			*1200	*1200		15 720			
	kg				*4,200	*4,200	*3,700	*3,700			*2,650	*2,650		51'4"			
7500 mm 25'0"					*2000	*2000	*2000	*2000			*1200	*1200		16 330			
	kg				*4,300	*4,300	*4,350	*4,350			*2,650	*2,650		53'5"			
6000 mm 20'0"					*2100	*2100	*2050	2000	*1600	*1600	*1200	*1200		16 780			
	kg				*4,650	*4,650	*4,550	4,300			*2,650	*2,650		54'11"			
4500 mm 15'0"					*2350	*2350	*2250	1950	*2000	1600	*1250	*1250		17 090			
	kg				*5,100	*5,100	*4,850	4,150	*3,700	3,300	*2,700	*2,700		56'0"			
3000 mm 10'0"					*2800	*2800	*2550	2250	*2250	1850	*2200	1500	*1300	*1300	17 260		
	kg				*6,100	*6,100	*5,550	4,850	*4,950	3,950	*4,350	3,200	*2,800	*2,800	56'7"		
1500 mm 5'0"					*3150	*3150	*2800	2600	*2400	1750	*2300	1450	*1350	1300	17 300		
	kg				*6,800	*6,800	*6,050	5,600	*5,550	4,600	*4,700	3,100	*2,900	2,900	56'8"		
0 mm 0'0"					*3450	3000	*3050	2450	*2750	2050	*2550	1700	2300	1400	17 200		
	kg				*7,450	6,400	*6,550	5,250	*5,950	4,300	*5,500	3,600	*4,700	3,000	*3,050	2,850	56'5"
-1500 mm -5'0"					*3750	2800	*3250	2300	*2900	1900	2600	1600	2250	1350	*1500	1300	16 970
	kg				*8,100	6,000	*7,050	4,950	*6,300	4,100	5,550	3,450	*4,150	2,900	*3,300	2,850	55'7"
-3000 mm -10'0"					*3950	2650	*3450	2200	2950	1850	2550	1550	*1850	1350	*1650	1300	16 610
	kg				*8,600	5,650	*7,450	4,700	6,350	3,950	5,450	3,300			*3,550	2,900	54'5"
-4500 mm -15'0"					4100	2550	3400	2100	2900	1800	2500	1550			*1800	1400	16 090
	kg				8,800	5,450	7,350	4,500	6,250	3,800	5,400	3,250			*3,950	3,000	52'8"
-6000 mm -20'0"					4050	2500	3400	2050	2900	1750	2500	1550			*2050	1500	15 410
	kg				8,700	5,350	7,250	4,450	6,200	3,750	*5,150	3,250			*4,500	3,250	50'4"
-7500 mm -25'0"					4050	2500	3400	2100	2900	1800					*2350	1650	14 540
	kg				8,700	5,350	7,250	4,450	6,250	3,800					*5,250	3,600	47'5"
-9000 mm -30'0"					4100	2550	3450	2150							*2900	1850	13 450
	kg				8,800	5,450	7,400	4,600							*6,450	4,150	43'8"
-10 500 mm -35'0"					*3850	2650	*3150	2250							*3150	2250	12 080
	kg				*8,150	5,700									*6,900	5,050	39'0"
-12 000 mm -40'0"															*3300	2900	10 300
	kg														*7,250	6,700	32'10"



ISO 10567:2007



\* Indicates that the load is limited by hydraulic lifting capacity rather than tipping load. The above loads are in compliance with hydraulic excavator lift capacity standard ISO 10567:2007. They do not exceed 87% of hydraulic lifting capacity or 75% of tipping load. Weight of all lifting accessories must be deducted from the above lifting capacities. Lifting capacities are based on the machine standing on a firm, uniform supporting surface. The use of a work tool attachment point to handle/lift objects, could affect the machine lift performance.

Lift capacity stays with ±5% for all available track shoes.

Always refer to the appropriate Operation and Maintenance Manual for specific product information.

# 326 Hydraulic Excavator Specifications

## Bucket Specifications and Compatibility

	Linkage	Width		Capacity		Counterweight			4600 kg (10,140 lb)		7400 kg (16,310 lb)	
		mm	in	m <sup>3</sup>	yd <sup>3</sup>	Weight		Fill	Reach Boom		SLR Boom	
						kg	lb		%	R2.95 (9'8")	R3.6 (11'10")	SLR 7.85 (25'9")
<b>Pin-On (No Quick Coupler)</b>												
General Duty Capacity	CB	600	24	0.63	0.83	700	1,543	100	●	●		
	CB	750	30	0.86	1.13	836	1,843	100	●	●		
	CB	900	36	1.09	1.43	943	2,079	100	●	●		
	CB	1050	42	1.34	1.75	1011	2,229	100	●	⊙		
	CB	1200	48	1.58	2.07	1106	2,439	100	⊙	○		
	CB	1350	54	1.83	2.40	1202	2,650	100	⊖	○		
General Duty Capacity Wide Tips	CB	600	24	0.63	0.83	697	1,537	100	●	●		
	CB	750	30	0.86	1.13	834	1,839	100	●	●		
	CB	900	36	1.09	1.43	941	2,075	100	●	●		
	CB	1050	42	1.34	1.75	1008	2,223	100	●	⊙		
	CB	1200	48	1.58	2.07	1104	2,434	100	⊙	⊖		
	CB	1350	54	1.83	2.40	1199	2,644	100	⊖	○		
Heavy Duty	CB	600	24	0.52	0.68	730	1,608	100	●	●		
	CB	750	30	0.71	0.93	848	1,869	100	●	●		
	CB	900	36	0.91	1.19	941	2,075	100	●	●		
	CB	1050	42	1.12	1.46	1035	2,283	100	●	●		
	CB	1200	48	1.33	1.74	1107	2,440	100	●	⊙		
	CB	1350	54	1.54	2.02	1205	2,657	100	⊙	⊖		
	CB	1500	60	1.76	2.30	1298	2,861	100	⊖	○		
	CB	1650	66	1.97	2.58	1375	3,031	100	○	◇		
Heavy Duty Power	CB	1050	42	1.12	1.47	1065	2,347	100	●	●		
	CB	1200	48	1.33	1.73	1143	2,519	100	●	⊙		
	CB	1350	54	1.53	2.01	1246	2,748	100	⊙	⊖		
Severe Duty	CB	600	24	0.52	0.68	752	1,657	90	●	●		
	CB	750	30	0.71	0.93	912	2,010	90	●	●		
	CB	900	36	0.91	1.19	995	2,194	90	●	●		
	CB	1050	42	1.12	1.46	1094	2,411	90	●	●		
	CB	1200	48	1.33	1.74	1172	2,583	90	●	⊙		
Ditch Cleaning	312, A	1200	48	0.57	0.74	364	803	100			◇	
	312, A	1500	60	0.74	0.97	455	1,003	100			X	
Maximum load with pin-on (payload + bucket)									kg	3966	3429	1044
									lb	8,744	7,560	2,302

### Maximum Material Density:

- 2100 kg/m<sup>3</sup> (3,500 lb/yd<sup>3</sup>)
- ⊙ 1800 kg/m<sup>3</sup> (3,000 lb/yd<sup>3</sup>)
- ⊖ 1500 kg/m<sup>3</sup> (2,500 lb/yd<sup>3</sup>)
- 1200 kg/m<sup>3</sup> (2,000 lb/yd<sup>3</sup>)
- ◇ 900 kg/m<sup>3</sup> (1,500 lb/yd<sup>3</sup>)
- X Not Recommended

The above loads are in compliance with hydraulic excavator standard EN474-5:2006 + A3:2013, they do not exceed 87% of hydraulic lifting capacity or 75% of tipping capacity with front linkage fully extended at ground line with bucket curled.

Capacity based on ISO 7451:2007.

Bucket weight with General Duty tips.

Caterpillar recommends using appropriate work tools to maximize the value customers receive from our products. Use of work tools, including buckets, which are outside of Caterpillar's recommendations or specifications for weight, dimensions, flows, pressures, etc. may result in less-than-optimal performance, including but not limited to reductions in production, stability, reliability, and component durability. Improper use of a work tool resulting in sweeping, prying, twisting and/or catching of heavy loads will reduce the life of the boom and stick.

(continued on next page)

# 326 Hydraulic Excavator Specifications

## Bucket Specifications and Compatibility (continued)

	Linkage	Width		Capacity		Counterweight			4600 kg (10,140 lb)		7400 kg (16,310 lb)
		mm	in	m <sup>3</sup>	yd <sup>3</sup>	Weight		Fill	Reach Boom		SLR Boom
						kg	lb		%	R2.95 (9'8")	R3.6 (11'10")
<b>With Cat Pin Grabber Coupler</b>											
General Duty Capacity	CB	600	24	0.63	0.83	700	1,543	100	●	●	
	CB	750	30	0.86	1.13	836	1,843	100	●	●	
	CB	900	36	1.09	1.43	943	2,079	100	●	⊙	
	CB	1050	42	1.34	1.75	1011	2,229	100	⊙	⊖	
	CB	1200	48	1.58	2.07	1106	2,439	100	⊖	○	
	CB	1350	54	1.83	2.40	1202	2,650	100	○	◇	
General Duty Capacity Wide Tips	CB	600	24	0.63	0.83	697	1,537	100	●	●	
	CB	750	30	0.86	1.13	834	1,839	100	●	●	
	CB	900	36	1.09	1.43	941	2,075	100	●	⊙	
	CB	1050	42	1.34	1.75	1008	2,223	100	⊙	⊖	
	CB	1200	48	1.58	2.07	1104	2,434	100	⊖	○	
	CB	1350	54	1.83	2.40	1199	2,644	100	○	◇	
Heavy Duty	CB	600	24	0.52	0.68	730	1,608	100	●	●	
	CB	750	30	0.71	0.93	848	1,869	100	●	●	
	CB	900	36	0.91	1.19	941	2,075	100	●	●	
	CB	1050	42	1.12	1.46	1035	2,283	100	●	⊖	
	CB	1200	48	1.33	1.74	1107	2,440	100	⊙	○	
	CB	1350	54	1.54	2.02	1205	2,657	100	⊖	◇	
	CB	1500	60	1.76	2.30	1298	2,861	100	○	◇	
	CB	1650	66	1.97	2.58	1375	3,031	100	○	◇	
Heavy Duty Power	CB	1050	42	1.12	1.47	1065	2,347	100	●	⊖	
	CB	1200	48	1.33	1.73	1143	2,519	100	⊙	○	
	CB	1350	54	1.53	2.01	1246	2,748	100	⊖	◇	
Heavy Duty Pin Grabber Performance	CB	750	30	0.70	0.91	876	1,931	100	●	●	
	CB	1050	42	1.08	1.42	1105	2,436	100	●	⊖	
	CB	1200	48	1.28	1.68	1186	2,614	100	⊙	○	
	CB	1350	54	1.49	1.94	1292	2,849	100	⊖	◇	
	CB	1500	60	1.69	2.21	1398	3,082	100	○	◇	
Severe Duty	CB	600	24	0.52	0.68	752	1,657	90	●	●	
	CB	750	30	0.71	0.93	912	2,010	90	●	●	
	CB	900	36	0.91	1.19	995	2,194	90	●	●	
	CB	1050	42	1.12	1.46	1094	2,411	90	●	⊙	
	CB	1200	48	1.33	1.74	1172	2,583	90	⊙	⊖	
Severe Duty Pin Grabber Performance	CB	600	24	0.51	0.66	829	1,828	90	●	●	
	CB	900	36	0.88	1.16	1057	2,331	90	●	●	
	CB	1050	42	1.08	1.42	1165	2,568	90	●	⊙	
	CB	1200	48	1.28	1.68	1252	2,760	100	⊙	○	
Maximum load with coupler (payload + bucket)								kg	3440	2903	518
								lb	7,583	6,399	1,141

The above loads are in compliance with hydraulic excavator standard EN474-5:2006 + A3:2013, they do not exceed 87% of hydraulic lifting capacity or 75% of tipping capacity with front linkage fully extended at ground line with bucket curled.

Capacity based on ISO 7451:2007.

Bucket weight with General Duty tips.

### Maximum Material Density:

- 2100 kg/m<sup>3</sup> (3,500 lb/yd<sup>3</sup>)
- ⊙ 1800 kg/m<sup>3</sup> (3,000 lb/yd<sup>3</sup>)
- ⊖ 1500 kg/m<sup>3</sup> (2,500 lb/yd<sup>3</sup>)
- 1200 kg/m<sup>3</sup> (2,000 lb/yd<sup>3</sup>)
- ◇ 900 kg/m<sup>3</sup> (1,500 lb/yd<sup>3</sup>)

Caterpillar recommends using appropriate work tools to maximize the value customers receive from our products. Use of work tools, including buckets, which are outside of Caterpillar's recommendations or specifications for weight, dimensions, flows, pressures, etc. may result in less-than-optimal performance, including but not limited to reductions in production, stability, reliability, and component durability. Improper use of a work tool resulting in sweeping, prying, twisting and/or catching of heavy loads will reduce the life of the boom and stick.

(continued on next page)

# 326 Hydraulic Excavator Specifications

## Bucket Specifications and Compatibility *(continued)*

	Linkage	Counterweight							4600 kg (10,140 lb)	
		Width		Capacity		Weight		Fill	Reach Boom	
		mm	in	m <sup>3</sup>	yd <sup>3</sup>	kg	lb	%	R2.95 (9'8")	R3.6 (11'10")
<b>PIN-ON, TRS23 S70</b>										
Heavy Duty – Grading	CB	1800	71	1.15	1.50	783	1,726	100	●	⊖
	CB	2000	79	1.30	1.70	948	2,090	100	⊖	○
Maximum load with pin-on (payload + bucket)								kg	3,160	2,623
								lb	6,967	5,783
<b>With S70, TRS23 S70</b>										
Heavy Duty – Grading	CB	1800	71	1.15	1.50	783	1,726	100	⊙	○
	CB	2000	79	1.30	1.70	948	2,090	100	⊖	◇
Maximum load with pin-on (payload + bucket)								kg	2,875	2,338
								lb	6,338	5,154

The above loads are in compliance with hydraulic excavator standard EN474-5:2006 + A3:2013, they do not exceed 87% of hydraulic lifting capacity or 75% of tipping capacity with front linkage fully extended at ground line with bucket curled.

Capacity based on ISO 7451:2007.

Bucket weight with General Duty tips.

### Maximum Material Density:

- 2100 kg/m<sup>3</sup> (3,500 lb/yd<sup>3</sup>)
- ⊙ 1800 kg/m<sup>3</sup> (3,000 lb/yd<sup>3</sup>)
- ⊖ 1500 kg/m<sup>3</sup> (2,500 lb/yd<sup>3</sup>)
- 1200 kg/m<sup>3</sup> (2,000 lb/yd<sup>3</sup>)
- ◇ 900 kg/m<sup>3</sup> (1,500 lb/yd<sup>3</sup>)

Caterpillar recommends using appropriate work tools to maximize the value customers receive from our products. Use of work tools, including buckets, which are outside of Caterpillar's recommendations or specifications for weight, dimensions, flows, pressures, etc. may result in less-than-optimal performance, including but not limited to reductions in production, stability, reliability, and component durability. Improper use of a work tool resulting in sweeping, prying, twisting and/or catching of heavy loads will reduce the life of the boom and stick.

# 326 Hydraulic Excavator Specifications

## Attachments Offering Guide

Not all Attachments are available in all regions. Consult your Cat dealer for configurations available in your region.

Match

\* Working range front only

No Match

### PIN-ON ATTACHMENTS

Counterweight		4600 kg (10,140 lb)	
Boom Type		Reach	
Stick Length		R2.95 (9'8")	R3.6 (11'10")
Hydraulic Hammers	H120 GC	✓	✓
	H120 GC S	✓	✓
	H120 S	✓	✓
	H130 GC	✓	✓
	H130 GC S	✓	✓
	H130 S	✓	✓
	H140 S	✓	✓
Multi-Processors	MP318 Concrete Cutter Jaw	✓	✓
	MP318 Demolition Jaw	✓	✓
	MP318 Pulverizer Jaw	✓	✓
	MP318 Shear Jaw	✓	✓
	MP318 Universal Jaw	✓	✓
	MP324 Concrete Cutter Jaw	✓	✓
	MP324 Demolition Jaw	✓	✓
	MP324 Pulverizer Jaw	✓	✓*
	MP324 Shear Jaw	✓	✓
	MP324 Tank Shear Jaw	✓	✓
MP324 Universal Jaw	✓	✓	
Demolition and Sorting Grapples	G324	✓	✓
	G324 WH-1500	✓	✓
	G324 WH-1800	✓	
	G324 WH-2000	✓*	
Mobile Scrap and Demolition Shears	S3025 Flat Top	✓	✓
	S3035 Flat Top	✓*	
Pulverizers	P218 Secondary Pulverizer	✓	✓
	P224 Secondary Pulverizer	✓	✓*
	P318 Primary Pulverizer	✓	✓
	P324 Primary Pulverizer	✓	✓*
Mulchers	HM4015	✓	✓
	HM4815	✓	✓
	HM5515	✓	✓
	HM6015	✓	✓
Compactors (Vibratory Plate)	CVP110	✓	✓
Rotary Cutters	RC20	✓	✓
	RC30	✓	✓

(continued on next page)

# 326 Hydraulic Excavator Specifications

## Attachments Offering Guide *(continued)*

Not all Attachments are available in all regions. Consult your Cat dealer for configurations available in your region.

1800 kg/m<sup>3</sup> (3,000 lb/yd<sup>3</sup>)
  1200 kg/m<sup>3</sup> (2,000 lb/yd<sup>3</sup>)
  No Match

### PIN-ON ATTACHMENTS

Counterweight		4600 kg (10,140 lb)	
Boom Type		Reach	
Stick Length		R2.95 (9'8")	R3.6 (11'10")
Orange Peel Grapples	GSH425-750	●	●
	GSH425-950	●	●
	GSH425-1150	●	○
	GSH440-1150	○	
	GSH525-750	●	●
	GSH525-950	●	○
	GSH525-1150	○	○

*(continued on next page)*

# 326 Hydraulic Excavator Specifications

## Attachments Offering Guide *(continued)*

Not all Attachments are available in all regions. Consult your Cat dealer for configurations available in your region.

Match       \* Working range front only       No Match

### CAT PIN GRABBER COUPLER ATTACHMENTS

Counterweight		4600 kg (10,140 lb)	
Boom Type		Reach	
Stick Length		R2.95 (9'8")	R3.6 (11'10")
Hydraulic Hammers	H120 GC	✓	✓
	H120 GC S	✓	✓
	H120 S	✓	✓
	H130 GC	✓	✓
	H130 GC S	✓	✓
	H130 S	✓	✓
	H140 S	✓	✓
Multi-Processors	MP318 Concrete Cutter Jaw	✓	✓
	MP318 Demolition Jaw	✓	✓
	MP318 Pulverizer Jaw	✓	✓
	MP318 Shear Jaw	✓	✓
	MP318 Universal Jaw	✓	✓
	MP324 Concrete Cutter Jaw	✓*	
	MP324 Demolition Jaw	✓*	
	MP324 Shear Jaw	✓	
	MP324 Tank Shear Jaw	✓*	
MP324 Universal Jaw	✓*		
Demolition and Sorting Grapples	G324	✓*	
	G324 WH-1500	✓*	
Mobile Scrap and Demolition Shears	S3025 Flat Top	✓	✓
Pulverizers	P218 Secondary Pulverizer	✓	✓
	P318 Primary Pulverizer	✓	✓
	P324 Primary Pulverizer	✓*	
Mulchers	HM4015	✓	✓
	HM4815	✓	✓
	HM5515	✓	✓
	HM6015	✓	✓
Compactors (Vibratory Plate)	CVP110	✓	✓
Rotary Cutters	RC20	✓	✓
	RC30	✓	✓

*(continued on next page)*

# 326 Hydraulic Excavator Specifications

## Attachments Offering Guide *(continued)*

Not all Attachments are available in all regions. Consult your Cat dealer for configurations available in your region.

Match       \* Working range front only       No Match

### S70 DEDICATED COUPLER ATTACHMENTS

Counterweight		4600 kg (10,140 lb)	
Boom Type		Reach	
Stick Length		R2.95 (9'8")	R3.6 (11'10")
Hydraulic Hammers	H120 GC S	✓	✓
	H120 S	✓	✓
	H130 S	✓	✓
	H140 S	✓	✓
Multi-Processors	MP318 Concrete Cutter Jaw	✓	✓
	MP318 Demolition Jaw	✓	✓
	MP318 Pulverizer Jaw	✓	✓
	MP318 Shear Jaw	✓	✓
	MP318 Universal Jaw	✓	✓
	MP324 Concrete Cutter Jaw	✓	✓*
	MP324 Demolition Jaw	✓	✓*
	MP324 Pulverizer Jaw	✓	
	MP324 Shear Jaw	✓	✓
	MP324 Tank Shear Jaw	✓	
MP324 Universal Jaw	✓	✓*	
Demolition and Sorting Grapples	G324	✓	✓*
	G324 WH-1500	✓	
	G324 WH-1800	✓*	
Mobile Scrap and Demolition Shears	S3025 Flat Top	✓	✓
Pulverizers	P218 Secondary Pulverizer	✓	✓
	P224 Secondary Pulverizer	✓	
	P318 Primary Pulverizer	✓	✓
	P324 Primary Pulverizer	✓	
Compactors (Vibratory Plate)	CVP110	✓	✓
Rotary Cutters	RC20	✓	✓
	RC30	✓	✓

*(continued on next page)*



# 326 Hydraulic Excavator Specifications

## Attachments Offering Guide *(continued)*

Not all Attachments are available in all regions. Consult your Cat dealer for configurations available in your region.

Match       \* Working range front only       No Match

### S80 DEDICATED COUPLER ATTACHMENTS

Counterweight		4600 kg (10,140 lb)	
Boom Type		Reach	
Stick Length		R2.95 (9'8")	R3.6 (11'10")
Hydraulic Hammers	H120 S	✓	✓
	H130 GC S	✓	✓
	H130 S	✓	✓
	H140 S	✓	✓
Multi-Processors	MP318 Concrete Cutter Jaw	✓	✓
	MP318 Demolition Jaw	✓	✓
	MP318 Pulverizer Jaw	✓	✓
	MP318 Shear Jaw	✓	✓
	MP318 Universal Jaw	✓	✓
	MP324 Concrete Cutter Jaw	✓	
	MP324 Demolition Jaw	✓	
	MP324 Pulverizer Jaw	✓*	
	MP324 Shear Jaw	✓	
	MP324 Tank Shear Jaw	✓*	
	MP324 Universal Jaw	✓*	
Demolition and Sorting Grapples	G324	✓	
	G324 WH-1500	✓*	
Mobile Scrap and Demolition Shears	S3025 Flat Top	✓	✓
Pulverizers	P218 Secondary Pulverizer	✓	✓
	P224 Secondary Pulverizer	✓*	
	P318 Primary Pulverizer	✓	✓
	P324 Primary Pulverizer	✓*	
Compactors (Vibratory Plate)	CVP110	✓	✓
Rotary Cutters	RC20	✓	✓
	RC30	✓	✓

*(continued on next page)*

# 326 Hydraulic Excavator Specifications

## Attachments Offering Guide *(continued)*

Not all Attachments are available in all regions. Consult your Cat dealer for configurations available in your region.

Match       \* Working range front only       No Match

### HCS70 DEDICATED COUPLER ATTACHMENTS

Counterweight		4600 kg (10,140 lb)	
Boom Type		Reach	
Stick Length		R2.95 (9'8")	R3.6 (11'10")
Hydraulic Hammers	H120 S	✓	✓
	H130 S	✓	✓
	H140 S	✓	✓
Multi-Processors	MP318 Concrete Cutter Jaw	✓	✓
	MP318 Demolition Jaw	✓	✓
	MP318 Pulverizer Jaw	✓	✓
	MP318 Shear Jaw	✓	✓
	MP318 Universal Jaw	✓	✓
	MP324 Concrete Cutter Jaw	✓	
	MP324 Demolition Jaw	✓	
	MP324 Pulverizer Jaw	✓*	
	MP324 Shear Jaw	✓	✓*
	MP324 Tank Shear Jaw	✓*	
	MP324 Universal Jaw	✓	
Demolition and Sorting Grapples	G324	✓	
	G324		
	G324 WH-1500	✓*	
Mobile Scrap and Demolition Shears	S3025 Flat Top	✓	✓
Pulverizers	P218 Secondary Pulverizer	✓	✓
	P224 Secondary Pulverizer	✓*	
	P318 Primary Pulverizer	✓	✓
	P324 Primary Pulverizer	✓*	
Compactors (Vibratory Plate)	CVP110	✓	✓
Rotary Cutters	RC20	✓	✓
	RC30	✓	✓

*(continued on next page)*

# 326 Hydraulic Excavator Specifications

## Attachments Offering Guide *(continued)*

Not all Attachments are available in all regions. Consult your Cat dealer for configurations available in your region.

Match       \* Working range front only       No Match

### HCS70/55 DEDICATED COUPLER ATTACHMENTS

Counterweight		4600 kg (10,140 lb)	
Boom Type		Reach	
Stick Length		R2.95 (9'8")	R3.6 (11'10")
Hydraulic Hammers	H120 S	✓	✓
	H130 S	✓	✓
	H140 S	✓	✓
Multi-Processors	MP318 Concrete Cutter Jaw	✓	✓
	MP318 Demolition Jaw	✓	✓
	MP318 Pulverizer Jaw	✓	✓
	MP318 Shear Jaw	✓	✓
	MP318 Universal Jaw	✓	✓
	MP324 Concrete Cutter Jaw	✓	
	MP324 Demolition Jaw	✓	
	MP324 Pulverizer Jaw	✓*	
	MP324 Shear Jaw	✓	✓*
	MP324 Tank Shear Jaw	✓*	
	MP324 Universal Jaw	✓*	
Demolition and Sorting Grapples	G324	✓	
	G324 WH-1500	✓*	
Mobile Scrap and Demolition Shears	S3025 Flat Top	✓	✓
Pulverizers	P218 Secondary Pulverizer	✓	✓
	P224 Secondary Pulverizer	✓*	
	P318 Primary Pulverizer	✓	✓
	P324 Primary Pulverizer	✓*	
Compactors (Vibratory Plate)	CVP110	✓	✓
Rotary Cutters	RC20	✓	✓
	RC30	✓	✓

*(continued on next page)*

# 326 Hydraulic Excavator Specifications

## Attachments Offering Guide *(continued)*

Not all Attachments are available in all regions. Consult your Cat dealer for configurations available in your region.

Match

\* Working range front only

No Match

### HCS80 DEDICATED COUPLER ATTACHMENTS

Counterweight		4600 kg (10,140 lb)	
Boom Type		Reach	
Stick Length		R2.95 (9'8")	R3.6 (11'10")
Hydraulic Hammers	H120 S	✓	✓
	H130 S	✓	✓
	H140 S	✓	✓
Multi-Processors	MP318 Concrete Cutter Jaw	✓	✓
	MP318 Demolition Jaw	✓	✓
	MP318 Pulverizer Jaw	✓	✓
	MP318 Shear Jaw	✓	✓
	MP318 Universal Jaw	✓	✓
	MP324 Concrete Cutter Jaw	✓*	
	MP324 Demolition Jaw	✓*	
	MP324 Shear Jaw	✓*	
	MP324 Universal Jaw	✓*	
	Demolition and Sorting Grapples	G324	✓*
Mobile Scrap and Demolition Shears	S3025 Flat Top	✓	✓*
Pulverizers	P218 Secondary Pulverizer	✓	✓
	P318 Primary Pulverizer	✓	✓
Compactors (Vibratory Plate)	CVP110	✓	✓
Rotary Cutters	RC20	✓	✓
	RC30	✓	✓

### TRS23 (PIN-ON TOP/S70 BOTTOM) ATTACHMENTS

Some attachments require more hydraulic flow and are best suited with a machine that has HP2 circuits and a tiltrotator with a high flow swivel. Check the hydraulic capability of your machine and tiltrotator and the requirements of your attachment to ensure a proper match.

Counterweight		4600 kg (10,140 lb)	
Boom Type		Reach	
Stick Length		R2.95 (9'8")	R3.6 (11'10")
Hydraulic Hammers	H120 GC S	✓	✓
	H120 S	✓	✓
	H130 S	✓	✓
Compactors (Vibratory Plate)	CVP110	✓	✓

**NOTE:** Use hammers on tiltrotators less than 10% of working hours per year or maximum 200 hours per year. Refer to your Operation and Maintenance Manual for recommended hydraulic flow requirements.

*(continued on next page)*

# 326 Hydraulic Excavator Specifications

## Attachments Offering Guide *(continued)*

Not all Attachments are available in all regions. Consult your Cat dealer for configurations available in your region.

Match

\* Working range front only

No Match

### TRS23 (S70 TOP/S70 BOTTOM) ATTACHMENTS

Some attachments require more hydraulic flow and are best suited with a machine that has HP2 circuits and a tiltrotator with a high flow swivel. Check the hydraulic capability of your machine and tiltrotator and the requirements of your attachment to ensure a proper match.

Counterweight		4600 kg (10,140 lb)	
Boom Type		Reach	
Stick Length		R2.95 (9'8")	R3.6 (11'10")
Hydraulic Hammers	H120 GC S	✓	✓
	H120 S	✓	✓
	H130 S	✓	✓*
Compactors (Vibratory Plate)	CVP110	✓	✓

**NOTE:** Use hammers on tiltrotators less than 10% of working hours per year or maximum 200 hours per year. Refer to your Operation and Maintenance Manual for recommended hydraulic flow requirements.

### TRS23 (PIN-ON TOP/S80 BOTTOM) ATTACHMENTS

Some attachments require more hydraulic flow and are best suited with a machine that has HP2 circuits and a tiltrotator with a high flow swivel. Check the hydraulic capability of your machine and tiltrotator and the requirements of your attachment to ensure a proper match.

Counterweight		4600 kg (10,140 lb)	
Boom Type		Reach	
Stick Length		R2.95 (9'8")	R3.6 (11'10")
Hydraulic Hammers	H120 GC S	✓	✓
	H120 S	✓	✓
	H130 S	✓	✓*
Compactors (Vibratory Plate)	CVP110	✓	✓

**NOTE:** Use hammers on tiltrotators less than 10% of working hours per year or maximum 200 hours per year. Refer to your Operation and Maintenance Manual for recommended hydraulic flow requirements.

### TRS23 (S80 TOP/S80 BOTTOM) ATTACHMENTS

Some attachments require more hydraulic flow and are best suited with a machine that has HP2 circuits and a tiltrotator with a high flow swivel. Check the hydraulic capability of your machine and tiltrotator and the requirements of your attachment to ensure a proper match.

Counterweight		4600 kg (10,140 lb)	
Boom Type		Reach	
Stick Length		R2.95 (9'8")	R3.6 (11'10")
Hydraulic Hammers	H120 S	✓	✓*
	H130 S	✓*	
Compactors (Vibratory Plate)	CVP110	✓	✓

**NOTE:** Use hammers on tiltrotators less than 10% of working hours per year or maximum 200 hours per year. Refer to your Operation and Maintenance Manual for recommended hydraulic flow requirements.

*(continued on next page)*

# 326 Hydraulic Excavator Specifications

## Attachments Offering Guide *(continued)*

Not all Attachments are available in all regions. Consult your Cat dealer for configurations available in your region.

Match  No Match

### TRS23 (HCS70 TOP/HCS70 BOTTOM) ATTACHMENTS

Some attachments require more hydraulic flow and are best suited with a machine that has HP2 circuits and a tiltrotator with a high flow swivel. Check the hydraulic capability of your machine and tiltrotator and the requirements of your attachment to ensure a proper match.

Counterweight		4600 kg (10,140 lb)	
Boom Type		Reach	
Stick Length		R2.95 (9'8")	R3.6 (11'10")
Hydraulic Hammers	H120 S	✓	✓
	H130 S	✓	
Compactors (Vibratory Plate)	CVP110	✓	✓

**NOTE:** Use hammers on tiltrotators less than 10% of working hours per year or maximum 200 hours per year. Refer to your Operation and Maintenance Manual for recommended hydraulic flow requirements.

### TRS23 (HCS70/55 TOP/HCS70/55 BOTTOM) ATTACHMENTS

Some attachments require more hydraulic flow and are best suited with a machine that has HP2 circuits and a tiltrotator with a high flow swivel. Check the hydraulic capability of your machine and tiltrotator and the requirements of your attachment to ensure a proper match.

Counterweight		4600 kg (10,140 lb)	
Boom Type		Reach	
Stick Length		R2.95 (9'8")	R3.6 (11'10")
Hydraulic Hammers	H120 S	✓	✓
	H130 S	✓	
Compactors (Vibratory Plate)	CVP110	✓	✓

**NOTE:** Use hammers on tiltrotators less than 10% of working hours per year or maximum 200 hours per year. Refer to your Operation and Maintenance Manual for recommended hydraulic flow requirements.

### TRS23 (HCS80 TOP/HCS80 BOTTOM) ATTACHMENTS

Some attachments require more hydraulic flow and are best suited with a machine that has HP2 circuits and a tiltrotator with a high flow swivel. Check the hydraulic capability of your machine and tiltrotator and the requirements of your attachment to ensure a proper match.

Counterweight		4600 kg (10,140 lb)	
Boom Type		Reach	
Stick Length		R2.95 (9'8")	R3.6 (11'10")
Hydraulic Hammers	H120 S	✓	
	CVP110	✓	✓

**NOTE:** Use hammers on tiltrotators less than 10% of working hours per year or maximum 200 hours per year. Refer to your Operation and Maintenance Manual for recommended hydraulic flow requirements.

### BOOM-MOUNT ATTACHMENTS

Counterweight		4600 kg (10,140 lb)	
Boom Type		Reach	
Mobile Scrap and Demolition Shears	S2050	✓	
	S3050 Flat Top	✓	

# 326 Hydraulic Excavator Specifications

## Thumb Specifications

Thumb Available

Not Available

Bucket Type	Tooth Quantity	Width		Pro Plus	Pro	Stiff Link	Utility			
		mm	in	Pin-on	Cat Pin Grabber	Pin-on	Cat Pin Grabber	Pin-on	Cat Pin Grabber	
General Duty	5	902	36	✓	✓	✓	✓	✓	✓	✓
	5	1056	42	✓	✓	✓	✓	✓	✓	✓
	6	1208	48	✓	✓	✓	✓	✓	✓	✓
	7	1350	54	✓	✓	✓	✓	✓	✓	✓
Heavy Duty	4	902	36	✓	✓	✓	✓	✓	✓	✓
	5	1056	42	✓	✓	✓	✓	✓	✓	✓
	5	1208	48	✓	✓	✓	✓	✓	✓	✓
	6	1350	54	✓	✓	✓	✓	✓	✓	✓
	7	1500	60	✓	✓	✓	✓	✓	✓	✓
	7	1650	66	✓	✓	✓	✓	✓	✓	✓
Heavy Duty Power	5	1080	42		✓		✓	✓	✓	✓
	5	1232	48	✓	✓	✓	✓	✓	✓	✓
	6	1384	54				✓	✓	✓	✓
Severe Duty	4	902	36	✓	✓	✓	✓	✓	✓	✓
	5	1056	42	✓	✓	✓	✓	✓	✓	✓
	5	1208	48	✓	✓	✓	✓	✓	✓	✓
Pin Grabber Performance (HD)	5	1208	48		✓		✓		✓	✓
	6	1350	54						✓	✓
	7	1500	60						✓	✓
Pin Grabber Performance (SD)	4	902	36						✓	✓
	5	1056	42		✓				✓	✓

# 326 Standard and Optional Equipment

## Standard and Optional Equipment

Standard and optional equipment may vary. Consult your Cat dealer for details.

	Standard	Optional		Standard	Optional
<b>BOOMS, STICKS AND LINKAGES</b>			<b>CAB (continued)</b>		
5.9 m (19'4") Reach boom		✓	Roof sunscreen	✓	
10.2 m (33'6") Super Long Reach boom		✓	Roller front sunscreen	✓	
2.95 m (9'8") Reach stick		✓	Roller rear sunscreen		✓
3.6 m (11'10") Reach stick		✓	Washable floor mat	✓	
7.85 m (25'9") Super Long Reach stick		✓	Beacon ready	✓	
Bucket linkage, CB1 type with lifting eye		✓	Cat Stick Steer		✓
Bucket linkage, A type with lifting eye for Super Long Reach		✓	Auxiliary relay		✓
Bucket linkage, A type with lifting eye for Super Long Reach, Cat Grade		✓	Bluetooth secure start/Attachment locator reader	✓	
<b>CAB</b>			<b>CAT TECHNOLOGY</b>		
ROPS	✓		VisionLink®	✓ <sup>1</sup>	
High-resolution 254 mm (10") LCD touchscreen monitor	✓		VisionLink Productivity		✓
Auto bi-level air conditioner	✓		Remote Flash	✓	
Jog dial and shortcut keys for monitor control	✓		Remote Troubleshoot	✓	
Keyless push-to-start engine control	✓		Cat Grade Connectivity		✓
Height-adjustable console	✓		Compatibility with radios and base stations from Trimble, Topcon, and Leica	✓	
Tilt-up left-side console	✓		Capability to install 3D grade systems from Trimble, Topcon, and Leica	✓	
Heated air-suspension seat	✓		Cat Grade 2D <sup>2</sup>	✓	
Joysticks with thumb roller		✓	Cat Grade 2D with Attachment Ready Option (ARO)		✓
51 mm (2") seat belt	✓		Cat Grade 3D single GNSS		✓
Monitor integrated Bluetooth® radio with USB/Auxiliary ports	✓		Cat Grade 3D dual GNSS		✓
12V DC outlets	✓		Laser catcher		✓
Document storage	✓		Cat Assist <sup>2</sup> :	✓	
Overhead storage and rear storage with nets	✓		– Boom Assist		
Beverage holder	✓		– Bucket Assist		
Cup holder	✓		– Swing Assist		
Openable two-piece front window	✓		– Grade Assist		
Rear window emergency exit	✓		– Lift Assist		
Radial wiper with washer	✓		Cat Payload <sup>2</sup> :	✓	
Openable polycarbonate skylight hatch	✓		– Static weigh		
LED dome light	✓		– Semiautomatic calibration		
Floor welcome light	✓		– Payload/cycle information		
			– USB reporting capability		
			Work tool recognition (PL161)	✓	
			Work tool tracking (PL161)	✓	
			Cat Tilt Rotator (TRS) Integration		✓
			Operator Coaching		✓

<sup>1</sup>Connect subscription only. Additional subscriptions are available. Contact your Cat dealer for availability.

<sup>2</sup>Optional on machines equipped with a Super Long Reach configuration.

(continued on next page)



## Standard and Optional Equipment (continued)

Standard and optional equipment may vary. Consult your Cat dealer for details.

	Standard	Optional		Standard	Optional
<b>ELECTRICAL SYSTEM</b>			<b>SAFETY AND SECURITY</b>		
Maintenance-free 1,000 CCA batteries	✓		Cat Command (remote control)		✓
Centralized electrical disconnect switch	✓		Cat 2D E-Fence <sup>2</sup> :	✓	
Programmable time-delay working lights	✓		– E-ceiling		
LED chassis, boom and cab lights	✓		– E-floor		
Premium surround lighting package		✓	– E-swing		
<b>ENGINE</b>			– E-wall		
Cat® C7.1 single turbo diesel engine	✓		– E-cab avoidance		
Three selectable modes: Power, Smart, Eco	✓		Auto hammer stop	✓	
4500 m (14,760 ft) altitude capability with engine power derate above 3000 m (9,840 ft)	✓		Rear and right-hand-sideview cameras		✓
Electric cooling fans with auto-reverse function	✓		Cab mirror for right-hand-side track edge		✓
Auto engine speed control	✓		360° visibility		✓
Auto engine idle shutdown	✓		Bluetooth receiver	✓	
Electric fuel priming pump	✓		Ground-level engine shutoff switch	✓	
52° C (125° F) high-ambient cooling capacity	✓		Right-hand handrail and hand hold	✓	
–18° C (0° F) cold start capability		✓	Lockable disconnect switch	✓	
–32° C (–25° F) cold start capability		✓	Signaling/warning horn	✓	
Double element air filter with integrated pre-cleaner	✓		Swing alarm		✓
2 × 115 Amp dual alternator	✓		Service platform with anti-skid plate and countersunk bolts	✓	
Two-stage fuel filtration system with water separator and indicator	✓		Hydraulic lock out lever neutralizes all controls	✓	
<b>HYDRAULIC SYSTEM</b>			Travel alarm	✓	
Electronic main control valve	✓		Inspection lighting		✓
Auto dig boost <sup>3</sup>	✓		<b>SERVICE AND MAINTENANCE</b>		
Auto heavy lift <sup>3</sup>	✓		Side entry to service platform	✓	
Stick regeneration circuit	✓		Grouped location of engine oil and fuel filters	✓	
Boom regeneration circuit	✓		Scheduled Oil Sampling (S-O-S <sup>SM</sup> ) ports	✓	
Tandem type electronic main pump	✓		Ground-level and platform-level dipstick for engine oil	✓	
Auxiliary pump		✓	Integrated vehicle health management system	✓	
Auto warm up	✓		<b>UNDERCARRIAGE AND STRUCTURES</b>		
Two-speed travel	✓		Two-piece segmented track guiding guards		✓
Hydraulic efficiency monitoring		✓	Full length track guiding guards		✓
Boom and stick drift reduction valve	✓		Swivel guard	✓	
Element type main hydraulic filter	✓		HD travel motor guards	✓	
			HD bottom guards	✓	
			Center upper cover	✓	
			Grease lubricated track	✓	
			4600 kg (10,140 lb) counterweight	✓	
			7400 kg (16,310 lb) counterweight for Super Long Reach		✓
			600 mm (24") single grouser track shoes		✓
			700 mm (28") triple grouser track shoes		✓
			790 mm (31") triple grouser track shoes	✓	
			Tie-down points	✓	

<sup>2</sup>Optional on machines equipped with a Super Long Reach configuration.

<sup>3</sup>Not available on machines equipped with a Super Long Reach configuration.

# 326 Dealer Installed Kits and Attachments

## Dealer Installed Kits and Attachments

Attachments may vary. Consult your Cat dealer for details.

### CAB

- Lower radial wiper
- Rain protector plus cab light cover
- Laminated P5A glass front windshield
- LH/RH electrical pedal for tool control
- Armrest kit
- Seat with 4-point seatbelt capability
- Dual exit rear window kit
- 75 mm (3") retractable seat belt

### SAFETY AND SECURITY

- Cat Detect – People Detection
- Cat Command – Remote control kit

### GUARDS

- HD swivel guard 16 mm (0.63") thick
- Side rubber bumper guard
- Operator Protective Guards (not compatible with cab light cover, rain protector)
- Mesh guard full front (not compatible with cab light cover, rain protector)
- Mesh guard lower half front
- Cab vandalism guard

### ELECTRICAL

- Wiring group (jump start)

The following information applies to the machine at the time of final manufacture as configured for sale in the regions covered in this document. The content of this declaration is valid as of the date issued; however, content related to machine features and specifications are subject to change without notice. For additional information, please see the machine's Operation and Maintenance Manual.

For more information on sustainability in action and our progress, please visit <https://www.caterpillar.com/en/company/sustainability>.

## Engine

- The Cat® C7.1 engine meets U.S. EPA Tier 4 Final, EU Stage V, and Japan 2014 emission standards.
- Cat diesel engines are required to use ULSD (ultra-low sulfur diesel fuel with 15 ppm of sulfur or less) or ULSD blended with the following lower-carbon intensity fuels\*\* up to:
  - ✓ 20% biodiesel FAME (fatty acid methyl ester)\*
  - ✓ 100% renewable diesel, HVO (hydrogenated vegetable oil) and GTL (gas-to-liquid) fuels

Refer to guidelines for successful application. Please consult your Cat dealer or “Caterpillar Machine Fluids Recommendations” (SEBU6250) for details.

*\*Engines with no aftertreatment devices can use higher blends, up to 100% biodiesel (for use of blends higher than 20% biodiesel, consult your Cat dealer).*

*\*\*Tailpipe greenhouse gas emissions from lower-carbon intensity fuels are essentially the same as traditional fuels.*

## Air Conditioning System

- The air conditioning system on this machine contains the fluorinated greenhouse gas refrigerant R134a (Global Warming Potential = 1430). The system contains 0.85 kg (1.9 lb) of refrigerant which has a CO<sub>2</sub> equivalent of 1.216 metric tonnes (1.340 tons).

## Paint

- Based on best available knowledge, the maximum allowable concentration, measured in parts per million (PPM), of the following heavy metals in paint are:
  - Barium < 0.01%
  - Cadmium < 0.01%
  - Chromium < 0.01%
  - Lead < 0.01%

## Sound Performance

ISO 6395:2008 (external) – 103 dB(A)

ISO 6396:2008 (inside cab) – 70 dB(A)

- Hearing protection may be needed when operating with an open operator station and cab (when not properly maintained or doors/windows open) for extended periods or in a noisy environment.

## Oils and Fluids

- Caterpillar factory fills with ethylene glycol coolants. Cat Diesel Engine Antifreeze/Coolant (DEAC) and Cat Extended Life Coolant (ELC) can be recycled. Consult your Cat dealer for more information.
- Cat Bio HYDO™ Advanced is an EU Ecolabel approved biodegradable hydraulic oil.
- Additional fluids are likely to be present, please consult the Operations and Maintenance Manual or the Application and Installation guide for complete fluid recommendations and maintenance intervals.

## Features and Technology

- The following features and technology may contribute to fuel savings and/or carbon reduction. Features may vary. Consult your Cat dealer for details.
  - Advanced hydraulic systems balance power and efficiency
  - Smart mode matches machine power to digging requirements automatically
  - Eco mode minimizes fuel consumption for light applications
  - Increase operating efficiency up to 45% with standard Cat technologies
  - Cut maintenance costs with extended service intervals
  - Programmable high-efficiency cooling fans run only when needed
  - The latest hydraulic oil filter provides longer life with a 3,000-hour replacement interval

## Recycling

- The materials included in machines are categorized as below with approximate weight percentage. Because of variations of product configurations, the following values in the table may vary.

Material Type	Weight Percentage
Steel	84.28%
Iron	4.95%
Nonferrous Metal	2.37%
Mixed Metal	1.45%
Mixed-Metal and Nonmetal	0.94%
Plastic	1.19%
Rubber	0.17%
Mixed Nonmetallic	0.21%
Fluid	2.94%
Other	1.50%
Uncategorized	0.00%
Total	100%

- A machine with higher recyclability rate will ensure more efficient usage of valuable natural resources and enhance End-of-Life value of the product. According to ISO 16714:2008 (Earthmoving machinery – Recyclability and recoverability – Terminology and calculation method), recyclability rate is defined as percentage by mass (mass fraction in percent) of the new machine potentially able to be recycled, reused or both.

All parts in the bill of material are first evaluated by component type based on a list of components defined by the ISO 16714:2008 and Japan CEMA (Construction Equipment Manufacturers Association) standards. Remaining parts are further evaluated for recyclability based on material type.

Because of variations of product configurations, the following value in the table may vary.

Recyclability – 97%

For more complete information on Cat products, dealer services, and industry solutions, visit us on the web at [www.cat.com](http://www.cat.com)

© 2023 Caterpillar  
All rights reserved

Materials and specifications are subject to change without notice. Featured machines in photos may include additional equipment. See your Cat dealer for available options.

CAT, CATERPILLAR, LET'S DO THE WORK, their respective logos, "Caterpillar Corporate Yellow," the "Power Edge" and Cat "Modern Hex" trade dress as well as corporate and product identity used herein, are trademarks of Caterpillar and may not be used without permission.

AEXQ2557-05 (09-2023)  
Replaces AEXQ2557-04  
Build Number: 07F  
(N Am)

