

Introduction

This document provides instructions for installing an accessory on a Cat® Utility Vehicle (CUV). Do not perform any procedure in this document until you have read and understood the information contained in this document and the Operation and Maintenance Manual.

Safety Section

<p>⚠ WARNING</p> <p>Do not operate or work on this product unless you have read and understood the instruction and warnings in the relevant Operation and Maintenance Manuals and relevant service literature. Failure to follow the instructions or heed the warnings could result in injury or death. Proper care is your responsibility.</p>	<p>⚠ WARNING</p> <p>Personal injury can result from improper handling of chemicals. Make sure you use all the necessary protective equipment required to do the job. Make sure that you read and understand all directions and hazards described on the labels and material safety data sheet of any chemical that is used. Observe all safety precautions recommended by the chemical manufacturer for handling, storage, and disposal of chemicals.</p>
<p>⚠ WARNING</p> <p>Failure to follow all safety guidelines prescribed in this document and by governing authorities and regulatory agencies may result in severe injury or death of personnel or machine damage.</p>	<p>⚠ WARNING</p> <p>Before servicing/performing maintenance on the machine, electrical power must be physically disconnected; battery cables must be disconnected from the battery. All applicable lock out and tag out procedures must be followed.</p>
<p>⚠ WARNING</p> <p>When removing a major component or attachment, ensure that it is properly blocked or secured before removing mounting hardware. An assembly that is disconnected without proper blocking may shift or fall, resulting in serious injury or death of personnel or machine damage.</p>	<p>⚠ WARNING</p> <p>Observe the safe working load limits of all lifting and blocking devices and keep a safe distance from suspended/blocked loads. Personnel may be seriously injured or killed by falling loads.</p>
<p>⚠ WARNING</p> <p>Personal injury or death can result from improper maintenance procedures. To avoid injury or death, follow the procedures exactly as stated below.</p>	<p>⚠ WARNING</p> <p>Do not operate the machine if any guards or covers are missing or inadequately secured. Personnel could be seriously injured or machine damage may occur.</p>

Caterpillar® Installation Instructions Cargo Box Lift Kit (p/n 546-0923)



■ **NOTE:** Read these Installation Instructions thoroughly before beginning the installation process. Retain these Installation Instructions for future reference.

Kit includes:	QTY	DESCRIPTION
	4	Cap Screw (M6 x 12 mm)
	2	Cap Screw (M8 x 65 mm)
	1	Shoulder Screw (M8 x 40 mm)
	1	Cap Screw (M14 x 55 mm)
	3	Nyloc Flange Nut (M8)
	1	Nyloc Nut (M14)
	1	Steel Spacer
	10	Cable Tie
	1	Electric Lift Assembly
	1	Lift Bracket
	1	Relay Bracket
	1	Harness
	1	Switch
	1	Relay (30 Amp)
	1	Fuse (30 Amp)
	1	Hardware Kit

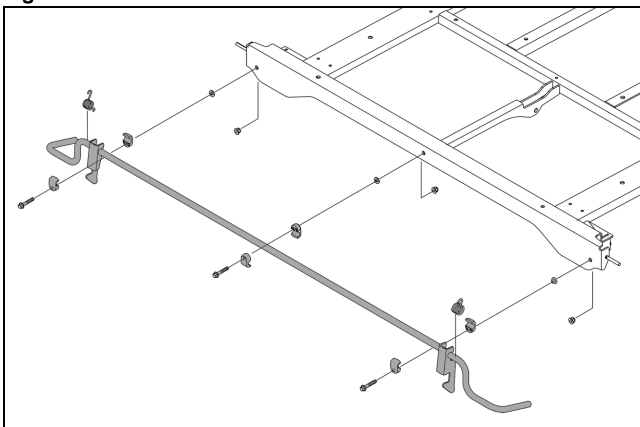
Tools Required:

- 8 mm Socket/Wrench
- 10 mm Socket/Wrench
- 13 mm Socket/Wrench
- 7/8 in. Socket/Wrench
- Torque Wrench
- Side Cutter
- T30 Torx Bit
- Ratchet Wrench

INSTALLING LIFT ASSEMBLY

1. Raise the cargo box; then remove the cap screws, Nuts, springs, washers, and half clamps securing the tilt latch to the cargo box. Remove the tilt latch assembly. See Fig. 1.

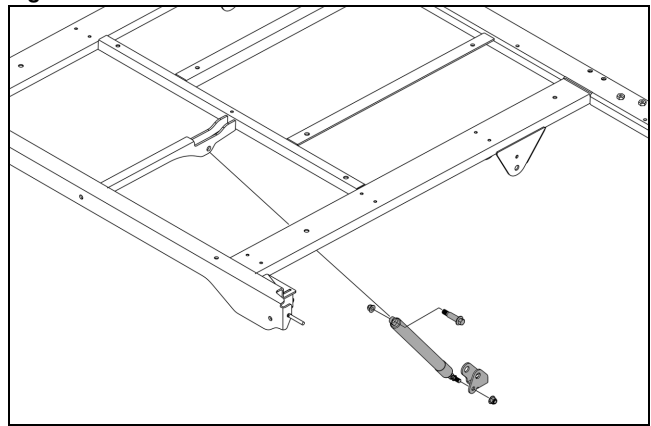
Fig. 1



VOR-634

2. Remove the cap screw and nuts securing the gas spring to the cargo box lift and the lift bracket making sure to have help holding the cargo box from opening too fast. Remove the gas spring assembly. See Fig. 2.

Fig. 2



VOR-633

3. Secure Lift Bracket to Electric Lift Assembly using four Cap Screws (M6 x 12 mm). Tighten securely. See Fig. 3.

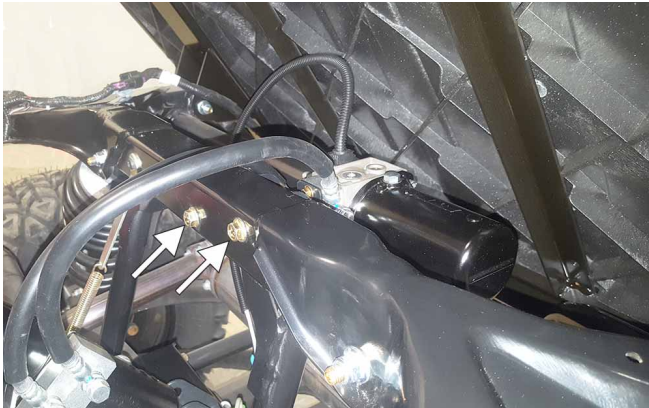
Fig. 3



ROV-965

- Secure the lift assembly bracket to the rear side of the frame tube using two Cap Screws (M8 x 65 mm) and two M8 Nyloc Flange Nuts. Tighten to 16 ft-lb. See Fig. 4.

Fig. 4



ROV-966

- Secure the bottom of the actuator piston to the lift bracket using one Cap Screw (M14 x 55 mm) and one M14 Nyloc Nut. Tighten to 25 ft-lb. See Fig. 5.

Fig. 5



ROV-967

- Once the harness is installed, fully raise the top of the actuator piston using the switch. Install Steel Spacer into the eyelet of the piston; then secure the piston to the cargo box using Shoulder Screw (M8 x 40 mm) and one M8 Nyloc Nut. Tighten to 16 ft-lb. See Fig. 6.

Fig. 6



ROV-968

INSTALLING HARNESS

■ **NOTE:** The length of the harness was designed to be installed on 2 person and 5 person models. Route the harness accordingly.

■ **NOTE:** A full illustration is on the next page showing how the harness is supposed to be routed.

- Remove the gauge from the dash panel; then disconnect the gauge and completely remove it.
- Remove the rear right-side access panel to gain access to the battery; then disconnect the battery making sure to disconnect the negative cable first.
- Position Harness so the relay is located above the battery and secure it to the frame or harness using a cable tie (A).
- Route the connector for the lift actuator along the frame and back to the actuator (B). Secure using cable ties.
- Connect the two pin (style 21) connector (C) to the three pin accessory on the main harness located in front of the engine on the battery side of the engine.
- Route the red and the black cables to the battery (D); then secure the positive battery cables to the positive (+) battery post. Tighten securely.
- Secure the negative battery cables to the negative (-) battery post. Tighten securely. Secure the cables and wires with cable ties.
- Remove the screws securing the right-side skid plate to the frame; then route the switch connector along the main harness on the right-side of the vehicle and up to where it will connect to the switch in the dash (E).
- Remove the far right plug from the switch panel located to the right of the gear shifter;** then route the switch connector through the dash.
- Plug the switch into the harness; then install the switch into the dash until it snaps into position. Cable tie as needed.
- Install the right side protective panel and secure using the quarter turn; then close and latch the cargo box.
- Install the right-side skid plate using the existing screws. Do not over-tighten.

