

## Introduction

This document provides instructions for installing an accessory on a Cat® Utility Vehicle (CUV). Do not perform any procedure in this document until you have read and understood the information contained in this document and the Operation and Maintenance Manual.

## Safety Section

<p><b>⚠ WARNING</b></p> <p>Do not operate or work on this product unless you have read and understood the instruction and warnings in the relevant Operation and Maintenance Manuals and relevant service literature. Failure to follow the instructions or heed the warnings could result in injury or death. Proper care is your responsibility.</p>	<p><b>⚠ WARNING</b></p> <p>Personal injury can result from improper handling of chemicals. Make sure you use all the necessary protective equipment required to do the job. Make sure that you read and understand all directions and hazards described on the labels and material safety data sheet of any chemical that is used. Observe all safety precautions recommended by the chemical manufacturer for handling, storage, and disposal of chemicals.</p>
<p><b>⚠ WARNING</b></p> <p>Failure to follow all safety guidelines prescribed in this document and by governing authorities and regulatory agencies may result in severe injury or death of personnel or machine damage.</p>	<p><b>⚠ WARNING</b></p> <p>Before servicing/performing maintenance on the machine, electrical power must be physically disconnected; battery cables must be disconnected from the battery. All applicable lock out and tag out procedures must be followed.</p>
<p><b>⚠ WARNING</b></p> <p>When removing a major component or attachment, ensure that it is properly blocked or secured before removing mounting hardware. An assembly that is disconnected without proper blocking may shift or fall, resulting in serious injury or death of personnel or machine damage.</p>	<p><b>⚠ WARNING</b></p> <p>Observe the safe working load limits of all lifting and blocking devices and keep a safe distance from suspended/blocked loads. Personnel may be seriously injured or killed by falling loads.</p>
<p><b>⚠ WARNING</b></p> <p>Personal injury or death can result from improper maintenance procedures. To avoid injury or death, follow the procedures exactly as stated below.</p>	<p><b>⚠ WARNING</b></p> <p>Do not operate the machine if any guards or covers are missing or inadequately secured. Personnel could be seriously injured or machine damage may occur.</p>

# Caterpillar®

## Installation Instructions - Accessory Kit

### Second Battery Kit (p/n 576-9846)



■ **NOTE:** Read these Installation Instructions thoroughly before beginning the installation process. Retain these Installation Instructions for future reference.

#### Kit includes:

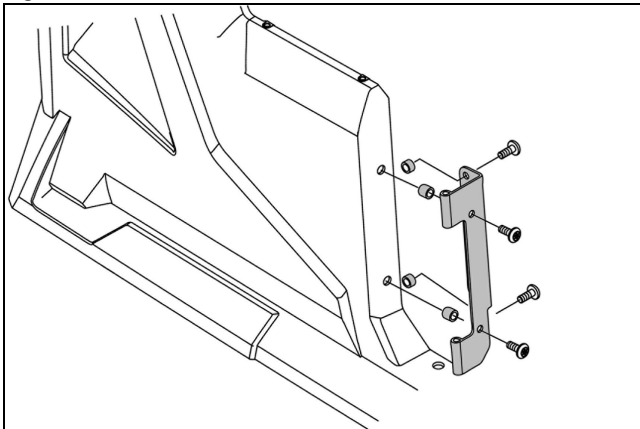
QTY	DESCRIPTION
1	Battery Pad
1	Positive Battery Cable
1	Negative Battery Cable
1	Terminal Boot
1	Retaining Pin
1	Washer
1	Push Nut
1	Retaining Clip
1	Battery Bracket
1	Battery Bracket Pad

#### Tools Required:

- T25 Torx Bit
- T30 Torx Bit
- 10 mm Socket/Wrench
- Ratchet Wrench

1. Raise the cargo box; then loosen the two quarter turns securing the right rear access panel. Remove the panel.
2. Remove the four screws securing the right-side door bracket to the frame; then remove the door and the bracket. Account for the four spacers. See Fig. 1.

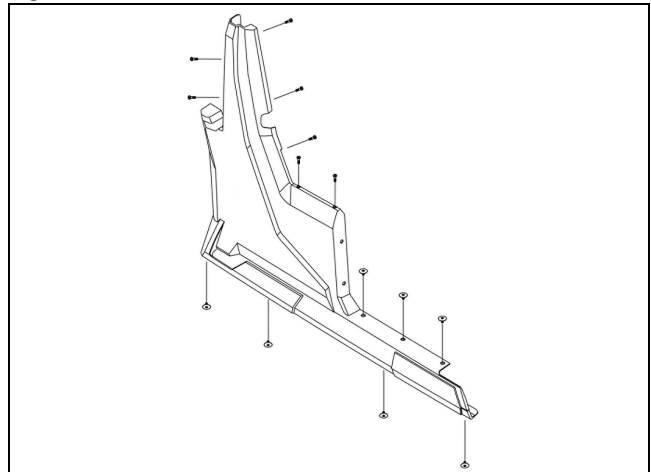
Fig. 1



VOR-593

3. Remove the screws securing the right-side panel. Remove the panel. See Fig. 2.

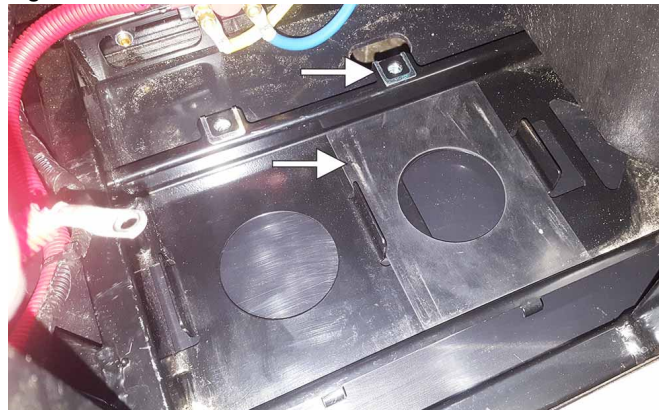
Fig. 2



VOR-594

4. Disconnect the existing battery; then loosen the quarter turn securing the battery bracket over the battery. Remove the bracket and the battery.
5. Install Retaining Clip onto the tab on the inside of where the battery will be installed; then install Battery Pad onto the frame in front of the existing battery pad. See Fig. 3.

Fig. 3



ROV-938

6. Install Battery Bracket Pad onto the bottom side of Battery Bracket; then install Washer onto Retaining Pin and install into the hole in the bracket. Secure using Push Nut. See Fig. 4.

Fig. 4



VOR-582

7. Install both batteries with the terminals facing rearward; then position the brackets over the batteries and secure using the retaining pins (into the clips). See Fig. 5.

Fig. 5

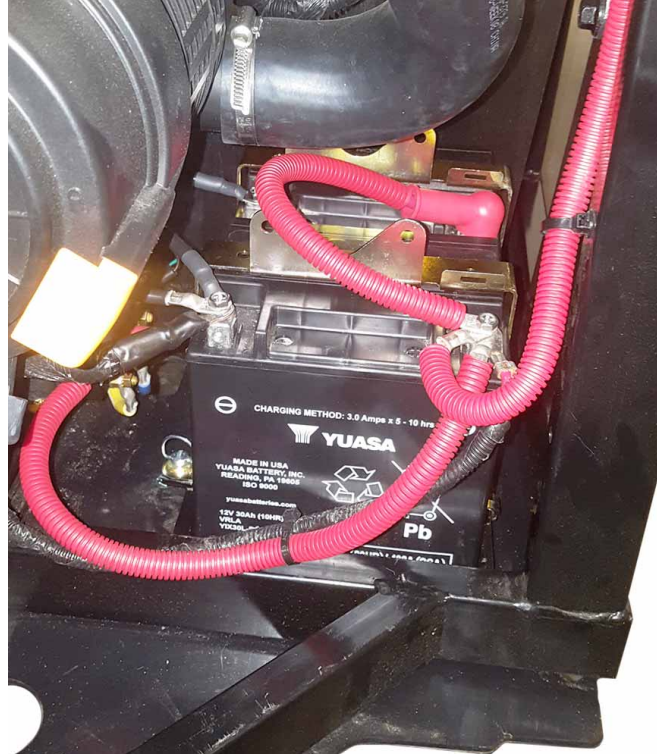


ROV-940

8. Install Terminal Boot over Positive Battery Cable; then secure positive and Negative Battery Cables to the new battery using the hardware supplied with the battery. See Fig. 6.

9. Secure all positive cables to the existing battery using the existing hardware; then secure all negative battery cables to the existing battery using the existing hardware. Tighten securely. See Fig. 6.

Fig. 6



ROV-941

10. Install the right-side panel and the access panel using the existing hardware.

11. Close and latch the cargo box.