

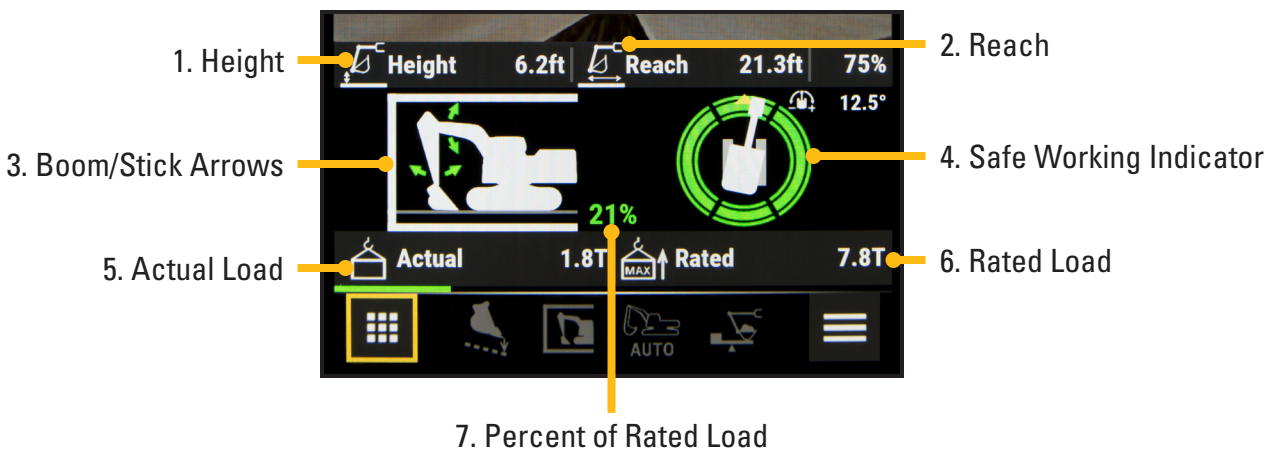
# Cat® Lift Assist

for Excavators



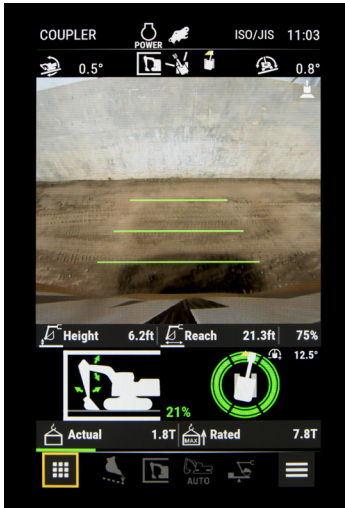
## CONFIDENTLY LIFT HEAVY LOADS

- Lift Assist helps you stay firmly grounded when lifting heavy loads.
- It enhances safe operation and reduces machine stress, lowering owning and operating costs.
- Ideal for applications like picking and placing heavy pipe, manholes, and trench boxes.
- Payload sensors detect if the load is within the excavator's safe working range.
- Visual indicators in the monitor indicate if you are lifting safe loads (green), close to rated load (amber), or overloaded (red).
- An auditory alert will sound if you're approaching the maximum safe working load; a continuous alert will sound if you are overloaded.
- Working along with other technologies like Cat® Payload, Cat Grade, and Cat 2D E-fence, Lift Assist improves overall jobsite efficiency and safety.

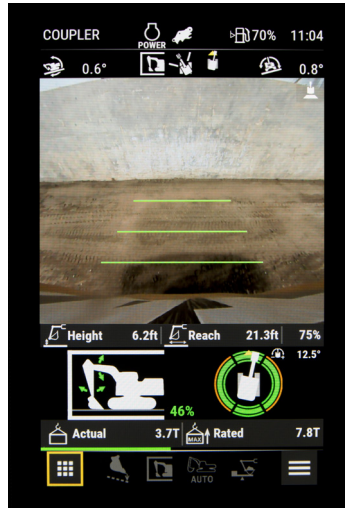


1. Height is the distance between the stick's lifting point and ground.
2. Reach is the boom and stick distance from the center of the excavator; a percentage indicator helps you stay within the excavator's maximum reach.
  - Inner circle is 50% of maximum reach
  - Middle circle is 70% of maximum reach
  - Outer circle is 90% of maximum reach
3. Arrows indicate the direction you need to move the boom and stick for safe lifting; colors change as load changes from safe (green) to close to rated load (amber) to overload (red).
4. The 360° circle uses green, amber, and red to show how much reach you have for lifting and moving the load safely.
5. Actual load indicates the weight of material you are lifting.
6. Rated load is what the excavator is capable of lifting.
7. Percent of rated load shows you how close you are to maximum load.

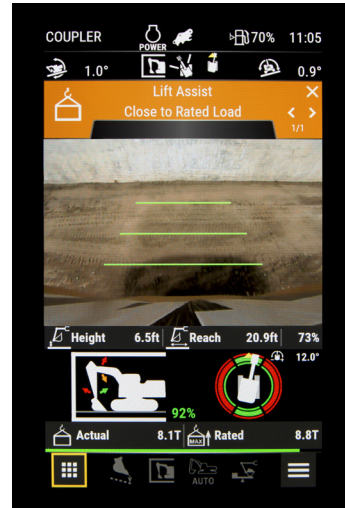
## > REAL-TIME LOAD INFORMATION



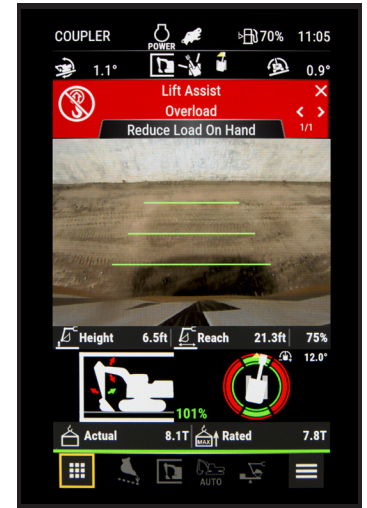
Operating with safe load in all machine positions – all arrows and circles are green.



Operating with safe load in all machine positions – note swing to load over side is marked in amber for close to rated load.



Close to rated load – alarm sounds; indicators show where to swing or direction to move boom and stick to return to safe load.



Overload – alarm sounds; indicators show where to swing or direction to move boom and stick to return to safe load.

## > IMPROVE SAFETY. INCREASE PRODUCTIVITY.

- Improve jobsite safety, increase productivity with less trial and error.
- Extend machine life by never overloading structural components.
- Lift Assist fully integrates into Cat next generation excavator technologies and complements their capabilities.

[www.cat.com](http://www.cat.com)

CAT, CATERPILLAR, LET'S DO THE WORK, their respective logos, "Caterpillar Corporate Yellow," the "Power Edge" and Cat "Modern Hex" trade dress as well as corporate and product identity used herein, are trademarks of Caterpillar and may not be used without permission.

AEXQ2533-01  
Afr-ME, Aus-NZ, CIS,  
Europe, N Am, S Am,  
S Korea  
© 2022 Caterpillar  
All Rights Reserved

