



Cat[®] 306.5

MINI HYDRAULIC EXCAVATOR

FEATURES:

The Cat[®] 306.5 Mini Excavator delivers maximum power and performance in a mini size to help you work in a wide range of applications.

ALL DAY COMFORT

- A sealed and pressurized cab is equipped with an improved air conditioning system, adjustable wrist rests and a suspension seat to help keep you working comfortably all day long.

EASY TO OPERATE

- Controls are easy to use and the intuitive Next Generation LCD monitor provides customizable machine operator preferences and easy to read machine information.

STICK STEER TRAVEL MODE

- Moving around the job site is even easier with Cat Stick Steer. Easily switch from traditional travel controls with levers and pedals to joystick controls with the push of a button. The benefit of less effort and improved control is in your hands!

BIG PERFORMANCE IN A MINI DESIGN

- Increased lifting and multi-functioning performance helps you get the job done more efficiently, and dig-to-blade allows for easy clean up.

SAFETY ON THE JOB SITE

- Your safety is our top priority. The Cat Mini Excavator is designed to help keep you safe on the job. Courtesy work lights and a fluorescent retractable seat belt are just a few of the safety features we've built into the machine.

SIMPLE SERVICE FOR LESS DOWNTIME

- Maintenance is quick and easy on the Cat Mini Excavator. Routine check points are easy to access at ground level through service panels.

LOWER OPERATING COSTS

- Equipped with features such as auto idle, auto engine shutdown, and efficient hydraulics with a variable displacement pump, the Cat Mini Excavator was designed with reducing your operating costs in mind.

UNMATCHED DEALER SUPPORT

- Your Cat dealer is here to help you reach your business goals. From providing equipment solutions to operator training to service needs and beyond, your Cat dealer is ready to help.

Specifications

Engine

Engine Model	Cat C2.4 Turbo
Rated Net Power @ 2,400 rpm	
ISO 9249/EEC 80/1269	34.9 kW
Gross Power	
ISO 14396	36.5 kW
Bore	87 mm
Stroke	102 mm
Displacement	2.43 L

Weights

Minimum Operating Weight with Cab*	6175 kg
Maximum Operating Weight with Cab**	6430 kg

*Minimum weight is based on steel tracks, no extra counterweight, operator, full fuel tank, long stick and bucket.

**Maximum weight is based on steel tracks, extra counterweight, operator, full fuel tank, long stick, blade and bucket.

Weight Increase from Minimum Configuration

Extra Counterweight	250 kg
Steel Tracks with Pads	210 kg



306.5 Mini Hydraulic Excavator

Travel System

Travel Speed – High	5.0 km/h
Travel Speed – Low	3.1 km/h
Maximum Traction Force – High Speed	31 kN
Maximum Traction Force – Low Speed	51 kN
Ground Pressure	33.7 kPa
Gradeability (maximum)	30 degrees

Service Refill Capacities

Cooling System	10.0 L
Engine Oil	9.5 L
Fuel Tank	105 L
Hydraulic Tank	53 L
Hydraulic System	104 L

Swing System

Machine Swing Speed	11.3 rpm
---------------------	----------

Blade

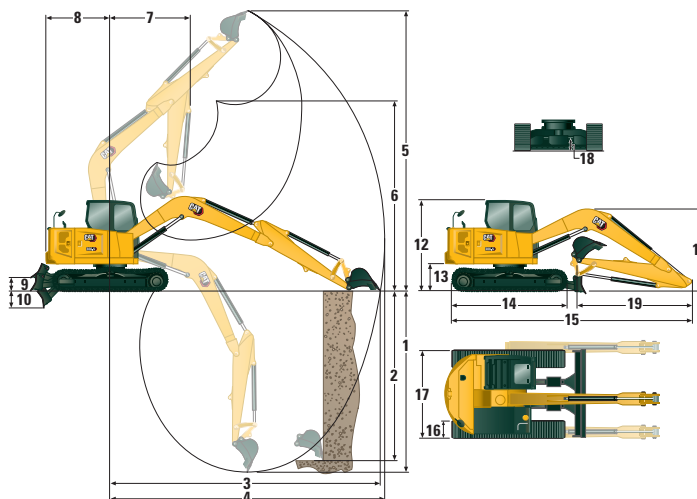
Width	1980 mm
Height	375 mm

Certification – Cab

Roll Over Protective Structure (ROPS)	ISO 12117-2:2008
Tip Over Protective Structure (TOPS)	ISO 12117:1997
Top Guard	ISO 10262:1998 (Level II)

Sound

Operator Sound Pressure (ISO 6396:2008)	72 dB(A)
--	----------



Dimensions

	Standard Stick
1 Dig Depth	3902 mm
2 Vertical Wall	2414 mm
3 Maximum Reach at Ground Level	5975 mm
4 Maximum Reach	6090 mm
5 Maximum Dig Height	5490 mm
6 Maximum Dump Clearance	3870 mm
7 Boom in Reach	2126 mm
8 Tail Swing	1585 mm
9 Maximum Blade Height	420 mm
10 Maximum Blade Depth	615 mm
11 Transport Height	2206 mm
12 Cab Height	2540 mm
13 Swing Bearing Height	657 mm
14 Overall Undercarriage Length	2532 mm
15 Overall Shipping Length	5789 mm
16 Track Belt/Shoe Width	400 mm
17 Overall Track Width	1980 mm
Width over Upper House	1950 mm
18 Ground Clearance	306 mm
19 Stick Length	1650 mm

306.5 Mini Hydraulic Excavator

Lift Capacities*

Lift Point Height			3 m			4.5 m			Lift Point Radius (Maximum)			
			Over Front		Over Side	Over Front		Over Side	Over Front		Over Side	m
			Blade Down	Blade Up		Blade Down	Blade Up		Blade Down	Blade Up		
4.5 m	Standard Stick	kg							925	925	925	3.98
3 m	Standard Stick	kg				920	920	920	915	915	915	4.99
1.5 m	Standard Stick	kg	1705	1705	1705	1090	1090	1090	950	950	720	5.35
0 m	Standard Stick	kg	2115	2115	1690	1230	1230	920	1000	1000	725	5.24

*Configuration includes steel tracks, operator, full fuel tank, no extra counterweight and no bucket.

306.5 Mini Hydraulic Excavator

EQUIPMENT

ENGINE

- Cat C2.4 Diesel Engine (China Nonroad Stage III) – Mechanical Engine, Turbo
- Automatic Engine Idle
- Automatic Engine Shutdown
- Automatic Swing Brake
- Automatic Two Speed Travel
- Fuel Water Separator with Indicator
- Radial Seal – Double Element Air Filter
- Extended Life Coolant, -37° C

HYDRAULICS

- Smart Tech Electronic Pump
- Variable Displacement Piston Pump
- Load Sensing/Flow Sharing Hydraulics
- Power On Demand
- Hydraulic Temperature Monitoring
- Certified Accumulator
- Hydro Advanced Hydraulic Oil

OPERATOR ENVIRONMENT

- Sealed and Pressurized Cab
- Operator Sound Pressure 72 dB(A) ISO 6396:2008
- Stick Steer Mode
- Control Pattern Changer
- Adjustable Wrist Rests
- Molded Footrests
- Removable, Washable Floor Mat
- Travel Pedals and Hand Levers

- Cat Key with Passcode Option
- HVAC with Automatic Temperature Control
- Hydraulic Lockout Controls
- Integrated Lower Front Window
- Assisted Front Window Overhead Storage
- Rear Window Emergency Exit
- Suspension Seat
- Retractable Seat Belt (51 mm)
- Coat Hook
- Cup Holder
- Literature Holder
- 12V Power Socket
- Radio – Bluetooth®, USB, Auxiliary, Microphone
- Skylight
- Mounting Bosses for Top and Front Guards
- ROPS – ISO 12117-2:2008
- TOPS – ISO 12117:1997
- Top Guard – ISO 10262:1998 (Level II)
- Color LCD Monitor
 - Fuel Level and Coolant Temperature Gauges
 - Maintenance and Machine Monitoring
 - Performance and Machine Adjustments
 - Numeric Security Code
 - Multiple Languages
 - Jog Dial Control Interface

UNDERCARRIAGE

- Greased and Lubricated Track
- Hydraulic Track Adjusters
- Tie Down Eyes on Track Frame

BOOM, STICK AND LINKAGES

- Front Shovel Capable

ELECTRICAL

- 12 Volt Electrical System
- Maintenance Free Battery
- Circuit Breaker
- Ignition Key Stop Switch
- Signaling/Warning Horn
- Product Link™

OTHER

- 0.25 m³ Bucket

OPTIONAL EQUIPMENT

OTHER

- Hammers
- One-Way Auxiliary

For more complete information on Cat products, dealer services, and industry solutions, visit us on the web at www.cat.com

© 2019 Caterpillar
All rights reserved

Materials and specifications are subject to change without notice. Featured machines in photos may include additional equipment. See your Cat dealer for available options.

CAT, CATERPILLAR, LET'S DO THE WORK, their respective logos, "Caterpillar Yellow," the "Power Edge" and Cat "Modern Hex" trade dress as well as corporate and product identity used herein, are trademarks of Caterpillar and may not be used without permission.

AEHQ8237 (08-2019)
(Southeast Asia)

