

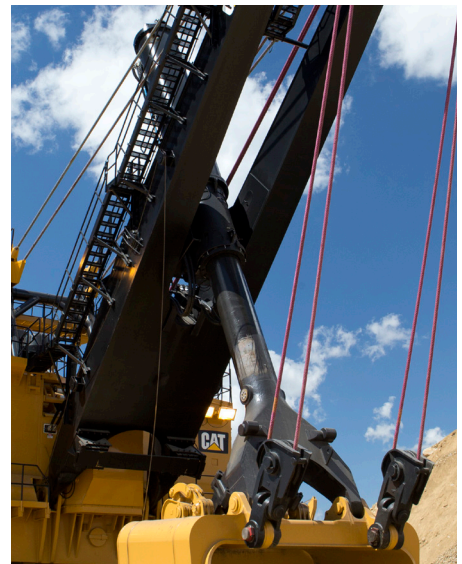


Cat[®] Handle FOR ELECTRIC ROPE SHOVELS

Faster Delivery with the Latest Design

We understand the importance of providing you intelligent aftermarket solutions for your Cat[®] Electric Rope Shovel. We also know the importance of having the parts you need when you need them—that's why we designed a universal handle.

Compatible with 7395 and all 7495 series Electric Rope Shovels, the new handle design increases component life extending the change out interval and ultimately reducing maintenance downtime.



BUILT FOR IT.™



Cat[®] Electric Rope Shovel Upgrade - Handle

APPLICABLE MACHINES

Machine	Serial Number
7395	ER501252, ER501265, ER501267
7495	ER601143 - up
7495 HF	ER801136 - up

For 7495 HD and 7495 B series shovels, contact your local dealer for compatibility

FREQUENTLY ASKED QUESTIONS

Is the handle compatible on both rope and HydraCrowd[™] Machines?

For HydraCrowd machines, no modification or additional components are required. Rope Crowd machines require a crowd slack take-up system and retract sheave. Consult your dealer to identify the system to order for your shovel.

Will the increased weight of the new handle require additional modifications to the shovel?

Yes. A ballast recommendation and swing motion tuning software will be provided with the order.

New Handle End Design:

- Same casting and handle end for both rope crowd options
- Fatigue lives at critical locations were improved by a factor of 2 or more
- Integrated pin resist twists caused by uneven ropes
- Simplified design with fewer components



To learn more about this upgrade and others contact your local Cat dealer today.

CAT DEALER COMMITMENT AND CAPABILITIES MAKE THE DIFFERENCE

Cat dealers provide the level of support you need, on a global scale. Dealer expert technicians have the knowledge, experience, training and tooling necessary to handle your repair and maintenance needs - when and where you need them.

PEWJ0353

© 2017 Caterpillar. All Rights Reserved. CAT, CATERPILLAR, BUILT FOR IT, their respective logos, "Caterpillar Yellow," the "Power Edge" trade dress as well as corporate and product identity used herein, are trademarks of Caterpillar and may not be used without permission.

