



Cat[®] 306.5

MINI HYDRAULIC EXCAVATOR

FEATURES:

The Cat[®] 306.5 Mini Excavator delivers maximum power and performance in a mini size to help you work in a wide range of applications.

ALL DAY COMFORT

- A sealed and pressurized cab is equipped with an improved air conditioning system, adjustable wrist rests and a suspension seat to help keep you working comfortably all day long.

EASY TO OPERATE

- Controls are easy to use and the intuitive Next Generation LCD monitor provides customizable machine operator preferences and easy to read machine information.

STICK STEER TRAVEL MODE

- Moving around the job site is even easier with Cat Stick Steer. Easily switch from traditional travel controls with levers and pedals to joystick controls with the push of a button. The benefit of less effort and improved control is in your hands!

BIG PERFORMANCE IN A MINI DESIGN

- Increased lifting and multi-functioning performance helps you get the job done more efficiently, and dig-to-blade allows for easy clean up.

SAFETY ON THE JOB SITE

- Your safety is our top priority. The Cat Mini Excavator is designed to help keep you safe on the job. Courtesy work lights and a fluorescent retractable seat belt are just a few of the safety features we've built into the machine.

SIMPLE SERVICE FOR LESS DOWNTIME

- Maintenance is quick and easy on the Cat Mini Excavator. Routine check points are easy to access at ground level through service panels.

LOWER OPERATING COSTS

- Equipped with features such as auto idle, auto engine shutdown, and efficient hydraulics with a variable displacement pump, the Cat Mini Excavator was designed with reducing your operating costs in mind.

UNMATCHED DEALER SUPPORT

- Your Cat dealer is here to help you reach your business goals. From providing equipment solutions to operator training to service needs and beyond, your Cat dealer is ready to help.



306.5 Mini Hydraulic Excavator

Specifications

Engine

Engine Model Cat C2.4 Turbo

Net Power @ 2,400 rpm

ISO 9249, 80/1269/EEC 34.9 kW

Engine Power

ISO 14396 36.5 kW

Bore 87 mm

Stroke 102 mm

Displacement 2.43 L

- Meets China Nonroad Stage IV emission standard.
- Advertised power is tested per the specified standard in effect at the time of manufacture.
- Net power advertised is the power available at the flywheel when the engine is equipped with fan, air intake system, exhaust system, and alternator.

Weights

Operating Weight with Cab* 6175 kg

* Weight is based on steel tracks, operator, full fuel tank, standard stick and bucket.

Travel System

Travel Speed – High 5.0 km/h

Travel Speed – Low 3.1 km/h

Maximum Traction Force – High Speed 31 kN

Maximum Traction Force – Low Speed 51 kN

Ground Pressure 33.7 kPa

Gradeability (maximum) 30 degrees

Service Refill Capacities

Cooling System 10.0 L

Engine Oil 9.5 L

Fuel Tank 105 L

Hydraulic Tank 53 L

Hydraulic System 104 L

Swing System

Machine Swing Speed 11.3 rpm

Blade

Width 1980 mm

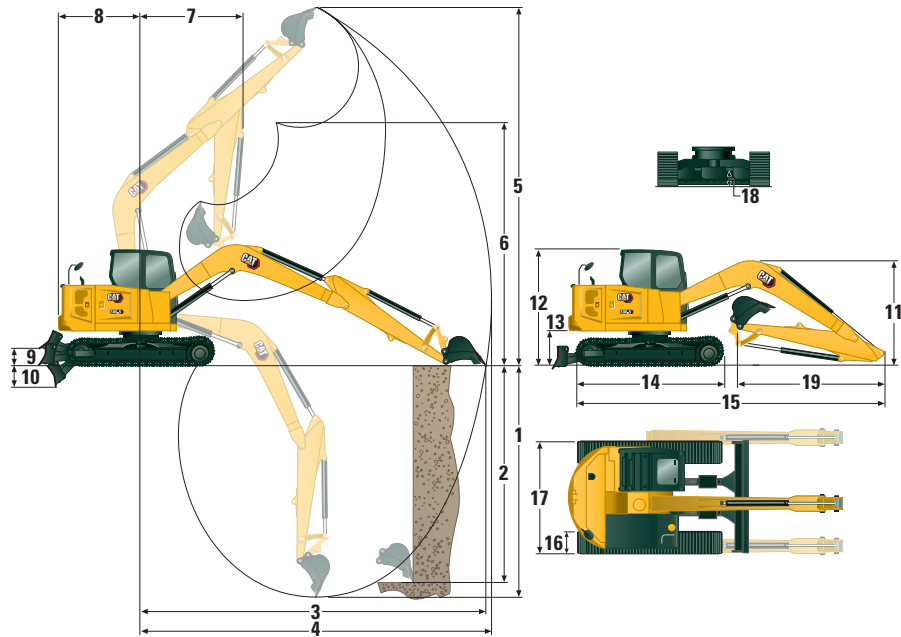
Height 375 mm

Certification – Cab

Roll Over Protective Structure (ROPS) ISO 12117-2:2008

Top Guard (optional) ISO 10262:1998 (Level I)

306.5 Mini Hydraulic Excavator



Dimensions

	Standard Stick
1 Dig Depth	3902 mm
2 Vertical Wall	2414 mm
3 Maximum Reach at Ground Level	5975 mm
4 Maximum Reach	6090 mm
5 Maximum Dig Height	5490 mm
6 Maximum Dump Clearance	3870 mm
7 Boom in Reach	2126 mm
8 Tail Swing	1585 mm
9 Maximum Blade Height	420 mm
10 Maximum Blade Depth	615 mm
11 Boom Height in Shipping Position	2206 mm
12 Cab Height	2540 mm
13 Swing Bearing Height	657 mm
14 Overall Undercarriage Length	2532 mm
15 Overall Shipping Length	5789 mm
16 Track Belt/Shoe Width	400 mm
17 Overall Track Width	1980 mm
Width over Upper House	1950 mm
18 Ground Clearance	306 mm
19 Stick Length	1650 mm

306.5 Mini Hydraulic Excavator

Lift Capacities*

Lift Point Height			3 m			4.5 m			Lift Point Radius (Maximum)			
			Over Front		Over Side	Over Front		Over Side	Over Front		Over Side	m
			Blade Down	Blade Up		Blade Down	Blade Up		Blade Down	Blade Up		
4.5 m	Standard Stick	kg							925	925	925	3.98
3 m	Standard Stick	kg				920	920	920	915	915	915	4.99
1.5 m	Standard Stick	kg	1705	1705	1705	1090	1090	1090	950	950	720	5.35
0 m	Standard Stick	kg	2115	2115	1690	1230	1230	920	1000	1000	725	5.24

*Configuration includes steel tracks, operator, full fuel tank, no extra counterweight and no bucket.

Standard and Optional Equipment

Standard and optional equipment may vary. Consult your Cat dealer for details.

	Standard	Optional		Standard	Optional
OPERATOR ENVIRONMENT – CAB AND CANOPY			OPERATOR ENVIRONMENT – CAB ONLY		
Top Guard ISO 10262 1998 Level I		✓	Operator Sound Pressure 72 dB(A) ISO 6396:2008	✓	
ROPS ISO 12117-2:2008	✓		HVAC with Automatic Temperature Control	✓	
Stick Steer Mode	✓		Integrated Lower Front Window	✓	
Travel Cruise Control	✓		Assisted Front Window Overhead Storage	✓	
Control Pattern Changer	✓		Rear Window Emergency Exit	✓	
Adjustable Wrist Rests	✓		LED Interior Light	✓	
Molded Footrests	✓		12V Power Socket	✓	
Removable, Washable Floor Mat	✓		Radio – Bluetooth®, Auxiliary, Microphone, USB (charging only)	✓	
Travel Pedals and Hand Levers	✓		Skylight	✓	
Cat Key with Passcode Option	✓		Jog dial interface	✓	
Hydraulic Lockout Controls	✓		Suspension Seat	✓	
High Back, Suspension Seat	✓		UNDERCARRIAGE		
Retractable Seat Belt (75 mm/3 in)	✓		Greased and Lubricated Track	✓	
Coat Hook	✓		Hydraulic Track Adjusters	✓	
Cup Holder	✓		Tie Down Eyes on Track Frame	✓	
Literature Holder	✓		Dozer Straight Blade	✓	
Mounting Bosses for Top and Front Guards	✓		Dozer Float	✓	
Signaling/Warning Horn	✓		Bolt-on, Reversible Wear Edge	✓	
Cab and (left side) Boom Work Lights	✓		Steel Tracks (400 mm/15.75 in wide)	✓	
Utility Space for Mobile Phone	✓				
Next Generation Color LCD Monitor (IP66)	✓				
– Fuel Level and Coolant Temperature Gauges	✓				
– Maintenance and Machine Monitoring	✓				
– Performance and Machine Adjustments	✓				
– Numeric Security Code	✓				
– Multiple Languages	✓				
– Hour Meter with Wake Up Switch	✓				

(continued on next page)

306.5 Mini Hydraulic Excavator

Standard and Optional Equipment *(continued)*

Standard and optional equipment may vary. Consult your Cat dealer for details.

	Standard	Optional		Standard	Optional
BOOM, STICK AND LINKAGES			OTHER		
One Piece Boom (3200 mm/126 in)	✓		Locks on External Enclosure Doors	✓	
Standard Stick (1650 mm/65 in)	✓		Lockable Fuel Cap	✓	
Front Shovel Capable – Pin-on/Manual Coupler/Hydraulic Coupler for Cat Tools	✓		Beacon Socket	✓	
Bucket (0.25 m ³ /0.33 yd ³)	✓		Rear Reflectors	✓	
Hammer		✓			
ELECTRICAL					
12 Volt Electrical System	✓				
90 Ampere Alternator	✓				
650 CCA Maintenance Free Battery	✓				
Battery Disconnect	✓				
Circuit Breaker	✓				
Ignition Key Stop Switch	✓				
Signaling/Warning Horn	✓				
Product Link Elite (regulations apply)	✓				

The following information applies to the machine at the time of final manufacture as configured for sale in the regions covered in this document. The content of this declaration is valid as of the date issued; however, content related to machine features and specifications are subject to change without notice. For additional information, please see the machine's Operation and Maintenance Manual.

For more information on sustainability in action and our progress, please visit <https://www.caterpillar.com/en/company/sustainability>.

Engine

- The Cat® C2.4 Turbo Diesel Engine meets China Nonroad Stage IV emission standards.
- Cat diesel engines are required to use ULSD (ultra-low sulfur diesel fuel with 15 ppm of sulfur or less) or ULSD blended with the following lower-carbon intensity fuels up to:
 - ✓ 20% biodiesel FAME (fatty acid methyl ester)
 - ✓ 100% renewable diesel, HVO (hydrogenated vegetable oil) and GTL (gas-to-liquid) fuels
 Refer to guidelines for successful application. Please consult your Cat dealer or "Caterpillar Machine Fluids Recommendations" (SEBU6250) for details.

Air Conditioning System

- The air conditioning system on this machine contains the fluorinated greenhouse gas refrigerant R134a (Global Warming Potential = 1430). The system contains 0.9 kg (1.98 lb) of refrigerant which has a CO₂ equivalent of 1.287 metric tonnes (1.419 tons).

Paint

- Based on best available knowledge, the maximum allowable concentration, measured in parts per million (PPM), of the following heavy metals in paint are:
 - Barium < 0.01%
 - Cadmium < 0.01%
 - Chromium < 0.01%
 - Lead < 0.01%

Sound Performance

Operator Sound Pressure* 72 dB(A) (ISO 6396:2008)
Average Exterior Sound Pressure** 99 dB(A) (ISO 6395:2008)

- *The declared dynamic operator sound pressure levels per ISO 6396:2008. The measurements were conducted with the cab doors and windows closed.
- **The labeled sound power level for the CE marked configurations when measured according to the test procedure and conditions specified in 2000/14/EC.

Oils and Fluids

- Caterpillar factory fills with ethylene glycol coolants. Cat Diesel Engine Antifreeze/Coolant (DEAC) and Cat Extended Life Coolant (ELC) can be recycled. Consult your Cat dealer for more information.
- Additional fluids are likely to be present, please consult the Operations and Maintenance Manual or the Application and Installation guide for complete fluid recommendations and maintenance intervals.

Features and Technology

- The following features and technology may contribute to fuel savings and/or carbon reduction. Features may vary. Consult your Cat dealer for details.
 - Advanced hydraulic systems balance power and efficiency
 - Power On Demand provides full time efficiency and power when you need it and is transparent to the operator
 - Auto idle and auto engine shutdown
 - Extended maintenance intervals reduce fluid and filter consumption
 - Remote Flash and Remote Troubleshoot (if equipped)

Recycling

- The materials included in machines are categorized as below with approximate weight percentage. Because of variations of product configurations, the following values in the table may vary.

Material Type	Weight Percentage
Steel	65.52%
Iron	21.19%
Rubber	3.50%
Mixed Metal	2.20%
Other	1.89%
Nonferrous Metal	1.81%
Plastic	1.55%
Fluid	1.47%
Mixed-Metal and Nonmetal	0.85%
Mixed Nonmetallic	0.01%
Uncategorized	0.00%
Total	100.00%

- A machine with higher recyclability rate will ensure more efficient usage of valuable natural resources and enhance End-of-Life value of the product. According to ISO 16714 (Earth-moving machinery – Recyclability and recoverability – Terminology and calculation method), recyclability rate is defined as percentage by mass (mass fraction in percent) of the new machine potentially able to be recycled, reused or both.

All parts in the bill of material are first evaluated by component type based on a list of components defined by the ISO 16714 and Japan CEMA (Construction Equipment Manufacturers Association) standards. Remaining parts are further evaluated for recyclability based on material type.

Because of variations of product configurations, the following values in the table may vary.

Recyclability – 96%

- The data provided above was based on the product configuration as provided by the individual product group.

306.5 Mini Hydraulic Excavator

For more complete information on Cat products, dealer services, and industry solutions, visit us on the web at www.cat.com

© 2023 Caterpillar
All rights reserved

Materials and specifications are subject to change without notice. Featured machines in photos may include additional equipment. See your Cat dealer for available options.

CAT, CATERPILLAR, LET'S DO THE WORK, their respective logos, "Caterpillar Corporate Yellow," the "Power Edge" and Cat "Modern Hex" trade dress as well as corporate and product identity used herein, are trademarks of Caterpillar and may not be used without permission.

AEHQ8226-02 (03-2023)
Replaces AEHQ8226-01
(China, Africa, Middle East)

