



349

Hydraulic Excavator

Technical Specifications

Configurations and features may vary by region. Please consult your Cat® dealer for availability in your area.

Table of Contents

Specifications	2
Engine	2
Swing Mechanism	2
Weights	2
Track	2
Drive	2
Hydraulic System	2
Service Refill Capacities	2
Standards	2
Sound Performance	2
Operating Weights and Ground Pressures	3
Major Component Weights	4
Dimensions	5
Working Ranges and Forces	7
Reach Boom Lift Capacities – Counterweight: 9.0 mt (19,842 lb)	9
Mass Boom Lift Capacities – Counterweight: 9.0 mt (19,842 lb)	18
Bucket Specifications and Compatibility:	
Africa, Middle East	21
CIS	22
SE Asia	23
South America	23
Attachments Offering Guide:	
Africa, Middle East	24
CIS	27
SE Asia	30
South America	31
Standard and Optional Equipment	33
Dealer Installed Kit and Attachments	35
Cab Options	36

349 Hydraulic Excavator Specifications

Engine

Engine Model	Cat® C13	
Net Power – ISO 9249	302 kW	405 hp
Engine Power – ISO 14396	303 kW	406 hp
Bore	130 mm	5 in
Stroke	157 mm	6 in
Displacement	12.5 L	763 in ³

- Meets Brazil MAR-1 and China Nonroad Stage III emission standards, equivalent to U.S. EPA Tier 3 and EU Stage IIIA.
- Recommended for use up to 4500 m (14,764 ft) altitude with engine power derate above 2600 m (8,530 ft).
- Net power is tested per ISO 9249. Standards in effect at the time of manufacture.
- Net power advertised is the power available at the flywheel when the engine is equipped with fan, air intake system, exhaust system and alternator.
- Rated speed at 1,800 rpm.

Swing Mechanism

Swing Speed	8.44 rpm	
Maximum Swing Torque	187 kN·m	138,000 lbf·ft

Weights

Operating Weight	47 500 kg	104,700 lb
• Reach boom, R3.35TB (11'0") stick, HD 2.78 m ³ (3.64 yd ³) bucket, 600 mm (24") double grouser shoes, and 9.0 mt (19,842 lb) counterweight.		
Operating Weight	49 300 kg	108,700 lb
• Mass boom, M2.5UB (8'2") stick, SD 3.21 m ³ (4.20 yd ³) bucket, 750 mm (30") double grouser shoes, and 9.0 mt (19,842 lb) counterweight.		

Track

Track Shoes Width	600 mm	24 in
Track Shoes Width	750 mm	30 in
Track Shoes Width	900 mm	35 in
Number of Shoes (each side)	52	
Number of Track Rollers (each side)	9	
Number of Carrier Rollers (each side)	2	

Drive

Gradeability	35°/70%	
Maximum Travel Speed	4.8 km/h	3.0 mph
Maximum Drawbar Pull	335 kN	75,311 lbf

Hydraulic System

Main System – Maximum Flow – Implement	779 L/min (389 × 2 pumps)	206 gal/min (103 × 2 pumps)
Maximum Pressure – Equipment – Implement	35 000 kPa	5,076 psi
Maximum Pressure – Equipment – Lift Mode	38 000 kPa	5,511 psi
Maximum Pressure – Travel	35 000 kPa	5,076 psi
Maximum Pressure – Swing	26 000 kPa	3,771 psi
Boom Cylinder – Bore	170 mm	7 in
Boom Cylinder – Stroke	1524 mm	60 in
Stick Cylinder – Bore	190 mm	7 in
Stick Cylinder – Stroke	1758 mm	69 in
TB Bucket Cylinder – Bore	160 mm	6 in
TB Bucket Cylinder – Stroke	1356 mm	53 in
UB Bucket Cylinder – Bore	170 mm	7 in
UB Bucket Cylinder – Stroke	1396 mm	55 in

Service Refill Capacities

Fuel Tank Capacity	715 L	188.9 gal
Cooling System	52 L	13.7 gal
Engine Oil (with filter)	40 L	10.6 gal
Swing Drive	10.5 L	2.8 gal
Final Drive (each)	15 L	4.0 gal
Hydraulic System (including tank)	550 L	145.3 gal
Hydraulic Tank (including suction pipe)	217 L	57.3 gal

Standards

Brakes	ISO 10265:2008
Cab/ROPS	ISO 12117-2:2008

Sound Performance

ISO 6395:2008 (external)	105 dB(A)
ISO 6396:2008 (inside cab)	75 dB(A)

- Hearing protection may be needed when operating with an open operator station and cab (when not properly maintained or doors/windows open) for extended periods or in a noisy environment.

349 Hydraulic Excavator Specifications

Operating Weights and Ground Pressures

	600 mm (24") Triple Grouser Shoes		600 mm (24") Double Grouser Shoes		750 mm (30") Triple Grouser Shoes		900 mm (35") Triple Grouser Shoes	
	Ground		Ground		Ground		Ground	
	Weight	Pressure	Weight	Pressure	Weight	Pressure	Weight	Pressure
	kg (lb)	kPa (psi)	kg (lb)	kPa (psi)	kg (lb)	kPa (psi)	kg (lb)	kPa (psi)
Base Frame with Single Flange Track Rollers and Carrier Rollers:								
9.0 mt (19,842 lb) Counterweight + Long Undercarriage Base Machine								
Reach Boom + Reach 3.9 m (12'10") Stick + 2.41 m ³ (3.15 yd ³) HD Bucket	47 300 (104,300)	88.2 (12.8)	47 400 (104,600)	88.4 (12.8)	48 100 (106,000)	89.6 (13.0)	48 800 (107,700)	91.0 (13.2)
Reach Boom + Reach 3.35 m (11'0") Stick + 2.41 m ³ (3.15 yd ³) SD Bucket	48 100 (106,000)	89.6 (13.0)	48 200 (106,300)	89.8 (13.0)	48 800 (107,700)	91.0 (13.2)	49 600 (109,300)	92.4 (13.4)
Reach Boom + Reach 2.9 m (9'6") Stick + 2.41 m ³ (3.15 yd ³) SD Bucket	47 900 (105,500)	89.2 (12.9)	48 000 (105,800)	89.4 (13.0)	48 600 (107,200)	90.6 (13.1)	49 400 (108,800)	92.0 (13.3)
Mass Boom + Mass 3.0 m (9'1") Stick + 2.61 m ³ (3.41 yd ³) SD Bucket	48 500 (106,900)	90.3 (13.1)	48 600 (107,100)	90.5 (13.1)	49 200 (108,500)	91.7 (13.3)	50 000 (110,200)	93.1 (13.5)
Mass Boom + Mass 2.5 m (8'2") Stick + 3.21 m ³ (4.20 yd ³) SD Bucket	48 600 (107,100)	90.5 (13.1)	48 700 (107,300)	90.7 (13.2)	49 300 (108,700)	91.9 (13.3)	50 100 (110,400)	93.3 (13.5)

All operating weights include a 90% fuel tank with 75 kg (165 lb) operator.

349 Hydraulic Excavator Specifications

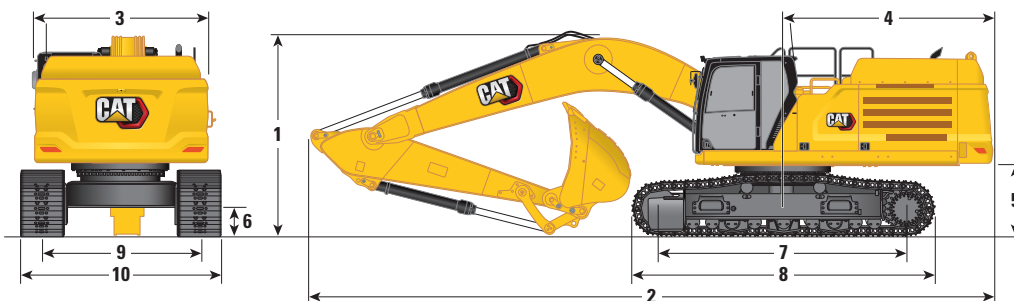
Major Component Weights

	kg	lb
Base machine with 9.0 mt (19,842 lb) counterweight, standard swing frame, base frame with single flange track rollers and carrier rollers	32 110	70,800
Track Shoes:		
600 mm (24") Width, 15.5 mm (0.6") Thick, Triple Grouser Track Shoes	5290	11,660
600 mm (24") Width, 15.5 mm (0.6") Thick, Double Grouser Track Shoes	5410	11,920
750 mm (30") Width, 15.5 mm (0.6") Thick, Triple Grouser Track Shoes	6040	13,310
900 mm (35") Width, 15.5 mm (0.6") Thick, Triple Grouser Track Shoes	6790	14,970
Two Boom Cylinders	1760	3,880
Weight of 90% Fuel Tank and 75 kg (165 lb) Operator	630	1,380
Counterweight:		
9.0 mt Counterweight	9000	19,842
Swing Frame:		
Standard Swing Frame	4070	8,980
Long Undercarriage:		
Base Frame with Single Flange Track Rollers and Carrier Rollers	6870	15,150
Booms (including lines, pins, stick cylinder):		
Reach Boom 6.9 m (22'8")	4410	9,720
Mass Boom 6.55 m (21'6")	4720	10,420
Sticks (including lines, pins, bucket cylinder, bucket linkage):		
Reach Stick R3.9TB (12'10")	2660	5,870
Reach Stick R3.35TB (11'0")	2510	5,540
Reach Stick R2.9TB (9'6")	2430	5,350
Mass Stick M3.0UB (9'10")	2950	6,510
Mass Stick M2.5UB (8'2")	2770	6,110
Buckets (without linkage):		
2.78 m ³ (3.64 yd ³) HD	2440	5,380
2.41 m ³ (3.15 yd ³) HD	2230	4,920
3.21 m ³ (4.20 yd ³) SD	3040	6,690

349 Hydraulic Excavator Specifications

Dimensions

All dimensions are approximate and may vary depending on bucket selection.



Boom Option

Reach Boom 6.9 m (22'8")

Stick Options

Reach Stick

R3.9TB (12'10")

R3.35TB (11'0")

R2.9TB (9'6")

1 Machine Height:

Cab Height	3230 mm	10'7"	3230 mm	10'7"	3230 mm	10'7"
FOGS Height	3370 mm	11'0"	3370 mm	11'0"	3370 mm	11'0"
Handrails Height	3370 mm	11'0"	3370 mm	11'0"	3370 mm	11'0"
With Boom/Stick/Bucket Installed	3670 mm	12'0"	3680 mm	12'0"	3670 mm	12'0"
With Boom/Stick Installed	3650 mm	11'11"	3550 mm	11'7"	3460 mm	11'4"
With Boom Installed	3100 mm	10'2"	3100 mm	10'2"	3100 mm	10'2"
With Boom/Stick/Bucket Installed (with Auxiliary Lines)	3670 mm	12'0"	3680 mm	12'0"	3670 mm	12'0"
With Boom/Stick Installed (with Auxiliary Lines)	3650 mm	11'11"	3550 mm	11'7"	3490 mm	11'5"
With boom Installed (with Auxiliary Lines)	3130 mm	10'3"	3130 mm	10'3"	3130 mm	10'3"

2 Machine Length:

With Boom/Stick/Bucket Installed	11 940 mm	39'2"	11 920 mm	39'1"	11 920 mm	39'1"
With Boom/Stick Installed	11 930 mm	39'1"	11 880 mm	38'11"	11 860 mm	38'10"
With Boom Installed	10 650 mm	34'11"	10 650 mm	34'11"	10 650 mm	34'11"
With Boom/Stick/Bucket Installed (with Auxiliary Lines)	11 940 mm	39'2"	11 920 mm	39'1"	11 920 mm	39'1"
With Boom/Stick Installed (with Auxiliary Lines)	11 930 mm	39'1"	11 880 mm	38'11"	11 860 mm	38'10"
With Boom Installed (with Auxiliary Lines)	10 650 mm	34'11"	10 650 mm	34'11"	10 650 mm	34'11"

3 Upperframe Width without Walkways

3020 mm	9'10"	3020 mm	9'10"	3020 mm	9'10"
---------	-------	---------	-------	---------	-------

4 Tail Swing Radius

3760 mm	12'4"	3760 mm	12'4"	3760 mm	12'4"
---------	-------	---------	-------	---------	-------

5 Counterweight Clearance without Shoe Lug

1280 mm	4'2"	1280 mm	4'2"	1280 mm	4'2"
---------	------	---------	------	---------	------

6 Ground Clearance without Shoe Lug

475 mm	1'6"	475 mm	1'6"	475 mm	1'6"
--------	------	--------	------	--------	------

7 Length to Center of Rollers

4360 mm	14'3"	4360 mm	14'3"	4360 mm	14'3"
---------	-------	---------	-------	---------	-------

8 Track Length

5370 mm	17'7"	5370 mm	17'7"	5370 mm	17'7"
---------	-------	---------	-------	---------	-------

9 Track Gauge

2740 mm	8'11"	2740 mm	8'11"	2740 mm	8'11"
---------	-------	---------	-------	---------	-------

10 Undercarriage Width:

600 mm (24") Shoes	3530 mm	11'6"	3530 mm	11'6"	3530 mm	11'6"
750 mm (30") Shoes	3530 mm	11'6"	3530 mm	11'6"	3530 mm	11'6"
900 mm (35") Shoes	3640 mm	11'11"	3640 mm	11'11"	3640 mm	11'11"

Bucket Type

Heavy Duty Heavy Duty Heavy Duty

Bucket Capacity

2.14 m ³	2.80 yd ³	2.78 m ³	3.64 yd ³	2.78 m ³	3.64 yd ³
---------------------	----------------------	---------------------	----------------------	---------------------	----------------------

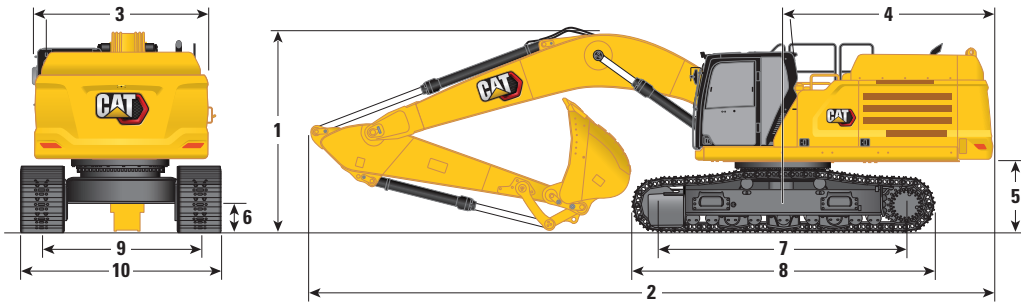
Bucket Tip Radius

1971 mm	6.5 ft	1882 mm	6.2 ft	1882 mm	6.2 ft
---------	--------	---------	--------	---------	--------

349 Hydraulic Excavator Specifications

Dimensions

All dimensions are approximate and may vary depending on bucket selection.

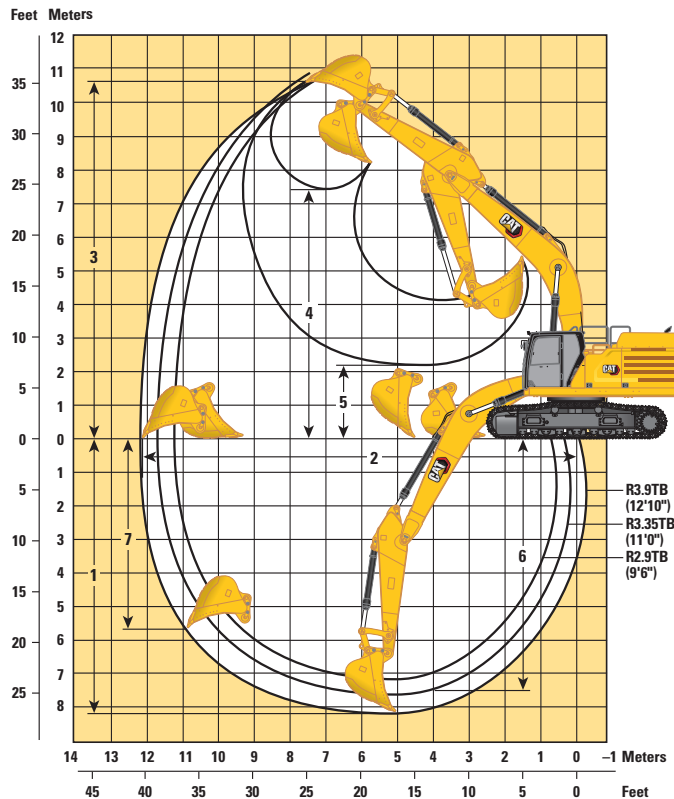


Boom Option	Mass Boom 6.55 m (21'6")			
	Stick Options			
	M3.0UB (9'10")		M2.5UB (8'2")	
1 Machine Height:				
Cab Height	3230 mm	10'7"	3230 mm	10'7"
FOGS Height	3370 mm	11'0"	3370 mm	11'0"
Handrails Height	3370 mm	11'0"	3370 mm	11'0"
With Boom/Stick/Bucket Installed	4270 mm	14'0"	4000 mm	13'1"
With Boom/Stick Installed	3780 mm	12'4"	3740 mm	12'3"
With Boom Installed	3170 mm	10'4"	3170 mm	10'4"
With Boom/Stick/Bucket Installed (with Auxiliary Lines)	4270 mm	14'0"	4000 mm	13'1"
With Boom/Stick Installed (with Auxiliary Lines)	3780 mm	12'4"	3740 mm	12'3"
With boom Installed (with Auxiliary Lines)	3190 mm	10'5"	3190 mm	10'5"
2 Machine Length:				
With Boom/Stick/Bucket Installed	11 640 mm	38'2"	11 680 mm	38'3"
With Boom/Stick Installed	11 540 mm	37'10"	11 590 mm	38'0"
With Boom Installed	10 290 mm	33'9"	10 290 mm	33'9"
With Boom/Stick/Bucket Installed (with Auxiliary Lines)	11 640 mm	38'2"	11 680 mm	38'3"
With Boom/Stick Installed (with Auxiliary Lines)	11 540 mm	37'10"	11 590 mm	38'0"
With Boom Installed (with Auxiliary Lines)	10 290 mm	33'9"	10 290 mm	33'9"
3 Upperframe Width without Walkways	3020 mm	9'10"	3020 mm	9'10"
4 Tail Swing Radius	3760 mm	12'4"	3760 mm	12'4"
5 Counterweight Clearance without Shoe Lug	1280 mm	4'2"	1280 mm	4'2"
6 Ground Clearance without Shoe Lug	475 mm	1'6"	475 mm	1'6"
7 Length to Center of Rollers	4360 mm	14'3"	4360 mm	14'3"
8 Track Length	5370 mm	17'7"	5370 mm	17'7"
9 Track Gauge	2740 mm	8'11"	2740 mm	8'11"
10 Undercarriage Width:				
600 mm (24") Shoes	3530 mm	11'6"	3530 mm	11'6"
750 mm (30") Shoes	3530 mm	11'6"	3530 mm	11'6"
900 mm (35") Shoes	3640 mm	11'11"	3640 mm	11'11"
Bucket Type	Severe Duty		Severe Duty	
Bucket Capacity	3.21 m ³	4.20 yd ³	3.21 m ³	4.20 yd ³
Bucket Tip Radius	1888 mm	6.2 ft	1888 mm	6.2 ft

349 Hydraulic Excavator Specifications

Working Ranges and Forces

All dimensions are approximate and may vary depending on bucket selection.



Boom Option

Reach Boom
6.9 m (22'8")

Stick Options

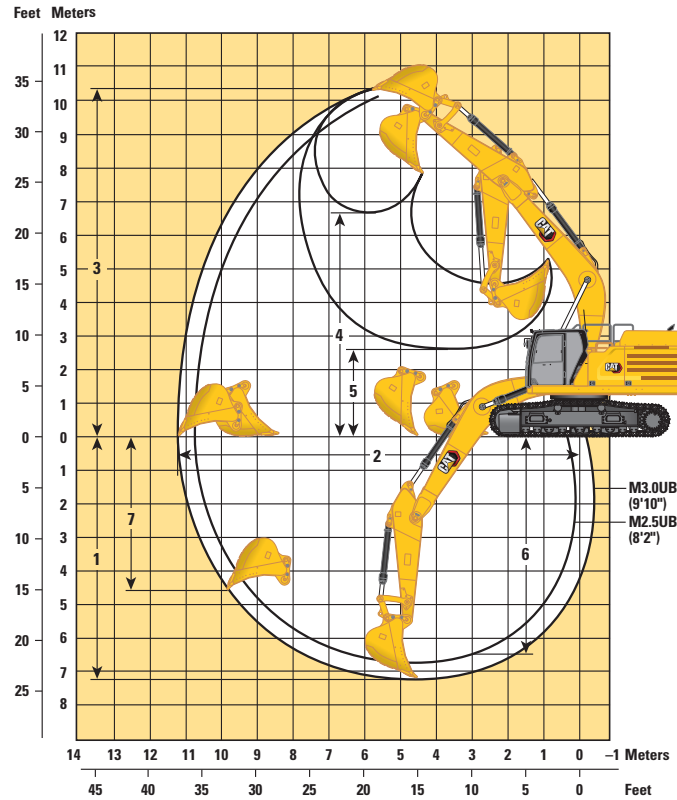
Reach Stick

	R3.9TB (12'10")		R3.35TB (11'0")		R2.9TB (9'6")	
	mm	ft	mm	ft	mm	ft
1 Maximum Digging Depth	8250	27'0"	7660	25'1"	7210	23'7"
2 Maximum Reach at Ground Line	12 190	39'11"	11 730	38'5"	11 320	37'1"
3 Maximum Cutting Height	10 630	34'10"	10 820	35'5"	10 640	34'10"
4 Maximum Loading Height	7380	24'2"	7430	24'4"	7250	23'9"
5 Minimum Loading Height	2160	7'1"	2750	9'0"	3200	10'5"
6 Maximum Depth Cut for 2440 mm (8 ft) Level Bottom	7520	24'8"	6960	22'10"	6440	21'1"
7 Maximum Vertical Wall Digging Depth	5540	18'2"	5830	19'1"	5420	17'9"
Bucket Digging Force (ISO)	271 kN	60,850 lbf	268 kN	60,160 lbf	268 kN	60,160 lbf
Stick Digging Force (ISO)	185 kN	41,560 lbf	183 kN	41,090 lbf	219 kN	49,200 lbf
Bucket Type	Heavy Duty		Heavy Duty		Heavy Duty	
Bucket Capacity	2.14 m ³	2.80 yd ³	2.78 m ³	3.64 yd ³	2.78 m ³	3.64 yd ³
Bucket Tip Radius	1971 mm	6.5 ft	1882 mm	6.2 ft	1882 mm	6.2 ft

349 Hydraulic Excavator Specifications

Working Ranges and Forces

All dimensions are approximate and may vary depending on bucket selection.



Boom Option

Mass Boom
6.55 m (21'6")

Stick Options

Mass Stick

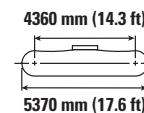
M3.0UB (9'10")

M2.5UB (8'2")

	M3.0UB (9'10")		M2.5UB (8'2")	
1 Maximum Digging Depth	7290 mm	23'11"	6790 mm	22'3"
2 Maximum Reach at Ground Line	11 260 mm	36'11"	10 800 mm	35'5"
3 Maximum Cutting Height	10 290 mm	33'9"	10 100 mm	33'1"
4 Maximum Loading Height	6760 mm	22'2"	6560 mm	21'6"
5 Minimum Loading Height	2590 mm	8'5"	3090 mm	10'1"
6 Maximum Depth Cut for 2440 mm (8 ft) Level Bottom	6440 mm	21'1"	5850 mm	19'2"
7 Maximum Vertical Wall Digging Depth	4610 mm	15'1"	4180 mm	13'8"
Bucket Digging Force (ISO)	296 kN	66,620 lbf	296 kN	66,620 lbf
Stick Digging Force (ISO)	212 kN	47,680 lbf	241 kN	54,080 lbf
Bucket Type	Severe Duty		Severe Duty	
Bucket Capacity	3.21 m ³	4.20 yd ³	3.21 m ³	4.20 yd ³
Bucket Tip Radius	1888 mm	6.2 ft	1888 mm	6.2 ft

349 Hydraulic Excavator Specifications

Reach Boom Lift Capacities – Counterweight: 9.0 mt (19,842 lb) – without Bucket, Heavy Lift: On



		1500 mm/60 in		3000 mm/120 in		4500 mm/180 in		6000 mm/240 in		7500 mm/300 in		9000 mm/360 in		mm in		
9000 mm 360 in	kg lb									*18,750	*18,750			*7900 *17,550	*7900 *17,550	7860 310
7500 mm 300 in	kg lb													*7550 *16,650	*7550 *16,650	8970 350
6000 mm 240 in	kg lb									*11 750 *25,650	11 150 24,000	*11 150 *23,000	8300 17,800	*7450 *16,450	*7450 16,150	9720 380
4500 mm 180 in	kg lb							*15 000 *32,350	*15 000 *32,350	*12 950 *28,100	10 750 23,150	*11 700 *25,550	8100 17,400	*7600 *16,700	*7600 16,600	10 190 400
3000 mm 120 in	kg lb					*24 000 *51,600	21 650 46,700	*17 500 *37,850	14 200 30,650	*14 300 *31,050	10 300 22,150	*12 450 *26,900	7850 16,850	*7950 *17,450	*7950 13,700	10 420 410
1500 mm 60 in	kg lb					*25 800 *59,850	20 200 43,500	*19 700 *42,600	13 450 28,950	*15 600 *33,800	9850 21,200	12 200 *26,300	7600 16,300	*8550 *18,750	*8550 13,400	10 430 410
0 mm 0 in	kg lb					*23 800 *55,100	19 500 41,950	*21 000 *45,450	12 900 27,800	15 700 *33,750	9500 20,450	12 000 *25,800	7400 15,900	*9450 *20,800	*9450 13,600	10 220 410
-1500 mm -60 in	kg lb			*15 300 *34,450	*15 300 *34,450	*28 350 *61,900	19 300 41,500	*21 200 *45,950	12 650 27,250	15 500 *33,300	9300 20,050	11 850 *25,550	7250 15,650	*10 600 *23,350	*10 600 14,350	9770 390
-3000 mm -120 in	kg lb	*38,550	*38,550	*22 350 *50,350	*22 350 *50,350	*26 750 *57,900	19 350 41,650	*20 350 *44,000	12 600 27,150	15 450 *33,200	9250 19,950	11 900 *26,150	7300 16,000	*11 800 *26,150	*11 800 16,000	9050 360
-4500 mm -180 in	kg lb			*31 350 *67,750	*31 350 *67,750	*23 400 *50,450	19 700 42,300	*18 100 *38,900	12 800 27,550	*13 950 *29,700	9400 20,300			*12 650 *27,900	*12 650 19,400	7980 320
-6000 mm -240 in	kg lb					*17 700 *37,450	*17 700 *37,450	*13 350 *27,700	13 250 *27,700					*12 200 *26,650	*12 200 *26,650	6380 250



ISO 10567



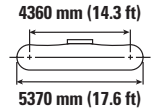
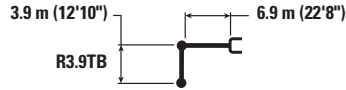
* Indicates that the load is limited by hydraulic lifting capacity rather than tipping load. The above loads are in compliance with hydraulic excavator lift capacity standard ISO 10567:2007. They do not exceed 87% of hydraulic lifting capacity or 75% of tipping load. Weight of all lifting accessories must be deducted from the above lifting capacities. Lifting capacities are based on the machine standing on a firm, uniform supporting surface. The use of a work tool attachment point to handle/lift objects, could affect the machine lift performance.

Lift capacity stays with ±5% for all available track shoes.

Always refer to the appropriate Operation and Maintenance Manual for specific product information.

349 Hydraulic Excavator Specifications

Reach Boom Lift Capacities – Counterweight: 9.0 mt (19,842 lb) – without Bucket, Heavy Lift: On



		1500 mm/60 in		3000 mm/120 in		4500 mm/180 in		6000 mm/240 in		7500 mm/300 in		9000 mm/360 in		mm in		
9000 mm 360 in	kg lb									*18,750	*18,750			*7900 *17,550	*7900 *17,550	7860 310
7500 mm 300 in	kg lb													*7550 *16,650	*7550 *16,650	8970 350
6000 mm 240 in	kg lb									*11 750 *25,650	11 000 23,700	*11 150 23,000	8200 17,550	*7450 *16,450	7150 15,900	9720 380
4500 mm 180 in	kg lb							*15 000 *32,350	14 900 32,150	*12 950 *28,100	10 600 22,850	*11 700 *25,550	8000 17,150	*7600 *16,700	6500 14,350	10 190 400
3000 mm 120 in	kg lb					*24 000 *51,600	21 350 46,100	*17 500 *37,850	14 050 30,250	*14 300 *31,050	10 150 21,850	12 350 26,500	7750 16,600	*7950 *17,450	6150 13,500	10 420 410
1500 mm 60 in	kg lb					*25 800 *59,850	19 900 42,900	*19 700 *42,600	13 250 28,550	*15 600 *33,800	9700 20,900	12 050 25,900	7450 16,050	*8550 *18,750	6000 13,200	10 430 410
0 mm 0 in	kg lb					*23 800 *55,100	19 250 41,350	*21 000 *45,450	12 700 27,400	15 450 33,250	9350 20,150	11 800 25,450	7250 15,650	*9450 *20,800	6100 13,350	10 220 410
-1500 mm -60 in	kg lb			*15 300 *34,450	*15 300 *34,450	*28 350 *61,900	19 050 40,900	*21 200 *45,950	12 450 26,850	15 250 32,800	9150 19,750	11 700 25,150	7150 15,400	10 450 23,000	6400 14,150	9770 390
-3000 mm -120 in	kg lb	*38,550	*38,550	*22 350 *50,350	*22 350 *50,350	*26 750 *57,900	19 100 41,050	*20 350 *44,000	12 450 26,750	15 200 32,700	9100 19,650	11 700 25,750	7200 15,750	11 650 25,750	7150 15,750	9050 360
-4500 mm -180 in	kg lb			*31 350 *67,750	*31 350 *67,750	*23 400 *50,450	19 400 41,750	*18 100 *38,900	12 600 27,150	*13 950 *29,700	9250 20,050			*12 650 *27,900	8600 19,100	7980 320
-6000 mm -240 in	kg lb					*17 700 *37,450	*17 700 *37,450	*13 350 *27,700	13 050 *27,700					*12 200 *26,650	12 000 *26,650	6380 250



ISO 10567



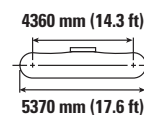
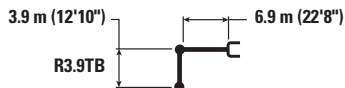
* Indicates that the load is limited by hydraulic lifting capacity rather than tipping load. The above loads are in compliance with hydraulic excavator lift capacity standard ISO 10567:2007. They do not exceed 87% of hydraulic lifting capacity or 75% of tipping load. Weight of all lifting accessories must be deducted from the above lifting capacities. Lifting capacities are based on the machine standing on a firm, uniform supporting surface. The use of a work tool attachment point to handle/lift objects, could affect the machine lift performance.

Lift capacity stays with ±5% for all available track shoes.

Always refer to the appropriate Operation and Maintenance Manual for specific product information.

349 Hydraulic Excavator Specifications

Reach Boom Lift Capacities – Counterweight: 9.0 mt (19,842 lb) – without Bucket, Heavy Lift: On



		1500 mm/60 in		3000 mm/120 in		4500 mm/180 in		6000 mm/240 in		7500 mm/300 in		9000 mm/360 in		mm in		
9000 mm 360 in	kg lb									*18,750	*18,750			*7900 *17,550	*7900 *17,550	7860 310
7500 mm 300 in	kg lb													*7550 *16,650	*7550 *16,650	8970 350
6000 mm 240 in	kg lb									*11 750 *25,650	10 900 23,450	*11 150 *23,000	8100 17,350	*7450 *16,450	*7450 15,700	7100 380
4500 mm 180 in	kg lb							*15 000 *32,350	14 750 31,800	*12 950 *28,100	10 500 22,600	*11 700 *25,550	7900 16,950	*7600 *16,700	6450 14,200	10 190 400
3000 mm 120 in	kg lb					*24 000 *51,600	21 150 45,600	*17 500 *37,850	13 850 29,900	*14 300 *31,050	10 050 21,600	12 200 26,200	7650 16,400	*7950 *17,450	6050 13,350	10 420 410
1500 mm 60 in	kg lb					*25 800 *59,850	19 700 42,400	*19 700 *42,600	13 100 28,200	*15 600 *33,700	9600 20,650	11 900 25,600	7400 15,850	*8550 *18,750	5900 13,050	10 430 410
0 mm 0 in	kg lb					*23 800 *55,100	19 000 40,850	*21 000 *45,450	12 550 27,100	15 250 32,850	9250 19,900	11 650 25,100	7150 15,450	*9450 *20,800	6000 13,200	10 220 410
-1500 mm -60 in	kg lb			*15 300 *34,450	*15 300 *34,450	*28 350 *61,900	18 800 40,400	*21 200 45,700	12 300 26,500	15 050 32,400	9050 19,500	11 550 24,850	7050 15,200	10 300 22,700	6350 13,950	9770 390
-3000 mm -120 in	kg lb	*38,550	*38,550	*22 350 *50,350	*22 350 *50,350	*26 750 *57,900	18 850 40,550	*20 350 *44,000	12 250 26,450	15 000 32,300	9000 19,400	11 550 25,400	7100 15,550	11 500 25,400	7050 15,550	9050 360
-4500 mm -180 in	kg lb			*31 350 *67,750	*31 350 *67,750	*23 400 *50,450	19 150 41,250	*18 100 *38,900	12 450 26,800	*13 950 *29,700	9150 19,800			*12 650 *27,900	8450 18,850	7980 320
-6000 mm -240 in	kg lb					*17 700 *37,450	*17 700 *37,450	*13 350 *27,700	12 900 *27,700					*12 200 *26,650	11 850 *26,650	6380 250



ISO 10567



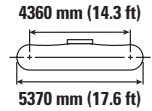
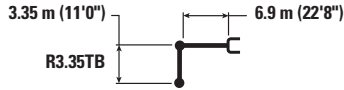
* Indicates that the load is limited by hydraulic lifting capacity rather than tipping load. The above loads are in compliance with hydraulic excavator lift capacity standard ISO 10567:2007. They do not exceed 87% of hydraulic lifting capacity or 75% of tipping load. Weight of all lifting accessories must be deducted from the above lifting capacities. Lifting capacities are based on the machine standing on a firm, uniform supporting surface. The use of a work tool attachment point to handle/lift objects, could affect the machine lift performance.

Lift capacity stays with ±5% for all available track shoes.

Always refer to the appropriate Operation and Maintenance Manual for specific product information.

349 Hydraulic Excavator Specifications

Reach Boom Lift Capacities – Counterweight: 9.0 mt (19,842 lb) – without Bucket, Heavy Lift: On



		3000 mm/120 in		4500 mm/180 in		6000 mm/240 in		7500 mm/300 in		9000 mm/360 in		mm in		
9000 mm 360 in	kg lb											*9000 *20,050	*9000 *20,050	7300 290
7500 mm 300 in	kg lb							*12 050 *26,450	11 250 24,100			*8500 *18,750	*8500 *18,750	8480 330
6000 mm 240 in	kg lb							*12 600 *27,500	11 000 23,700	*10 750 *20,250	8200 17,550	*8350 *18,350	7800 17,250	9270 370
4500 mm 180 in	kg lb			*20 900 *44,800	*20 900 *44,800	*16 150 *34,850	14 850 32,050	*13 700 *29,750	10 650 22,900	*12 350 *26,950	8050 17,250	*8450 *18,550	7050 15,550	9770 390
3000 mm 120 in	kg lb			*25 950 *55,750	21 150 45,600	*18 550 *40,050	14 050 30,250	*15 000 *32,500	10 200 22,000	12 450 26,800	7800 16,800	*8800 *19,350	6650 14,600	10 010 400
1500 mm 60 in	kg lb			*18 600 *41,500	*18 600 *41,500	*20 450 *44,200	13 350 28,750	16 050 34,500	9800 21,150	12 200 26,300	7600 16,350	*9400 *20,700	6500 14,300	10 020 400
0 mm 0 in	kg lb			*20 950 *46,650	19 550 42,050	*21 350 *46,250	12 900 27,850	15 700 33,800	9550 20,550	12 050 25,900	7450 16,000	*10 400 *22,950	6600 14,550	9800 390
-1500 mm -60 in	kg lb	*14 900 *33,650	*14 900 *33,650	*28 000 *60,750	19 500 41,900	*21 200 *45,850	12 750 27,450	15 550 33,500	9400 20,250	11 950 25,800	7350 15,900	11 400 25,150	7050 15,500	9330 370
-3000 mm -120 in	kg lb	*23 850 *53,850	*23 850 *53,850	*25 650 *55,550	19 650 42,250	*19 850 *42,900	12 800 27,550	15 600 33,550	9400 20,300			12 900 *28,450	7950 17,550	8570 340
-4500 mm -180 in	kg lb	*27 750 *59,900	*27 750 *59,900	*21 650 *46,650	20 050 43,100	*16 900 *36,200	13 050 28,100					*12 750 *27,950	9800 21,850	7430 290



ISO 10567



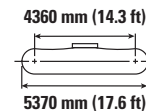
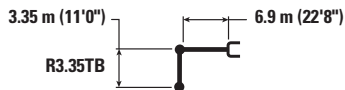
* Indicates that the load is limited by hydraulic lifting capacity rather than tipping load. The above loads are in compliance with hydraulic excavator lift capacity standard ISO 10567:2007. They do not exceed 87% of hydraulic lifting capacity or 75% of tipping load. Weight of all lifting accessories must be deducted from the above lifting capacities. Lifting capacities are based on the machine standing on a firm, uniform supporting surface. The use of a work tool attachment point to handle/lift objects, could affect the machine lift performance.

Lift capacity stays with ±5% for all available track shoes.

Always refer to the appropriate Operation and Maintenance Manual for specific product information.

349 Hydraulic Excavator Specifications

Reach Boom Lift Capacities – Counterweight: 9.0 mt (19,842 lb) – without Bucket, Heavy Lift: On



		3000 mm/120 in		4500 mm/180 in		6000 mm/240 in		7500 mm/300 in		9000 mm/360 in		mm in		
9000 mm 360 in	kg lb											*9000 *20,050	*9000 *20,050	7300 290
7500 mm 300 in	kg lb							*12 050 *26,450	11 100 23,800			*8500 *18,750	*8500 *18,750	8480 330
6000 mm 240 in	kg lb							*12 600 *27,500	10 900 23,400	*10 750 *20,250	8100 17,300	*8350 *18,350	*8350 *17,050	7650 370
4500 mm 180 in	kg lb			*20 900 *44,800	*20 900 *44,800	*16 150 *34,850	14 700 31,650	*13 700 *29,750	10 500 22,600	*12 350 *26,950	7900 17,000	*8450 *18,550	*8450 *15,300	6950 390
3000 mm 120 in	kg lb			*25 950 *55,750	20 850 45,050	*18 550 *40,050	13 850 29,850	*15 000 *32,500	10 050 21,700	12 300 26,400	7700 16,550	*8800 *19,350	*8800 *14,400	10 010 400
1500 mm 60 in	kg lb			*18 600 *41,500	*18 600 *41,500	*20 450 *44,200	13 150 28,350	15 800 34,000	9650 20,850	12 050 25,900	7500 16,100	*9400 *20,700	*9400 *14,050	10 020 400
0 mm 0 in	kg lb			*20 950 *46,650	19 300 41,450	*21 350 *46,250	12 750 27,450	15 500 33,350	9400 20,250	11 850 25,550	7300 15,750	*10 400 *22,950	*10 400 *14,350	9800 390
-1500 mm -60 in	kg lb	*14 900 *33,650	*14 900 *33,650	*28 000 *60,750	19 250 41,350	*21 200 *45,850	12 550 27,100	15 350 33,000	9250 19,950	11 800 25,400	7250 15,650	11 250 24,750	11 250 15,250	6950 370
-3000 mm -120 in	kg lb	*23 850 *53,850	*23 850 *53,850	*25 650 *55,550	19 400 41,700	*19 850 *42,900	12 600 27,150	15 350 33,050	9250 20,000			12 700 28,150	7800 17,300	8570 340
-4500 mm -180 in	kg lb	*27 750 *59,900	*27 750 *59,900	*21 650 *46,650	19 750 42,550	*16 900 *36,200	12 850 27,700					*12 750 *27,950	9650 21,550	7430 290



ISO 10567



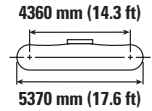
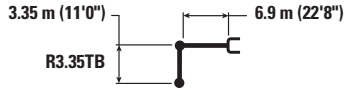
* Indicates that the load is limited by hydraulic lifting capacity rather than tipping load. The above loads are in compliance with hydraulic excavator lift capacity standard ISO 10567:2007. They do not exceed 87% of hydraulic lifting capacity or 75% of tipping load. Weight of all lifting accessories must be deducted from the above lifting capacities. Lifting capacities are based on the machine standing on a firm, uniform supporting surface. The use of a work tool attachment point to handle/lift objects, could affect the machine lift performance.

Lift capacity stays with ±5% for all available track shoes.

Always refer to the appropriate Operation and Maintenance Manual for specific product information.

349 Hydraulic Excavator Specifications

Reach Boom Lift Capacities – Counterweight: 9.0 mt (19,842 lb) – without Bucket, Heavy Lift: On



		3000 mm/120 in		4500 mm/180 in		6000 mm/240 in		7500 mm/300 in		9000 mm/360 in		mm in		
9000 mm 360 in	kg lb											*9000 *20,050	*9000 *20,050	7300 290
7500 mm 300 in	kg lb							*12 050 *26,450	11 000 23,550			*8500 *18,750	*8500 *18,750	8480 330
6000 mm 240 in	kg lb							*12 600 *27,500	10 750 23,150	*10 750 *20,250	8000 17,100	*8350 *18,350	*8350 *18,350	7600 370
4500 mm 180 in	kg lb			*20 900 *44,800	*20 900 *44,800	*16 150 *34,850	14 500 31,300	*13 700 *29,750	10 400 22,350	*12 350 *26,600	7850 16,800	*8450 *18,550	*8450 *18,550	6850 390
3000 mm 120 in	kg lb			*25 950 *55,750	20 650 44,550	*18 550 *40,050	13 700 29,550	*15 000 *32,500	9950 21,450	12 150 26,100	7600 16,350	*8800 *19,350	*8800 *19,350	6450 400
1500 mm 60 in	kg lb			*18 600 *41,500	*18 600 *41,500	*20 450 *44,200	13 000 28,050	15 600 33,600	9550 20,600	11 900 25,600	7400 15,900	*9400 *20,700	*9400 *20,700	6300 400
0 mm 0 in	kg lb			*20 950 *46,650	19 050 40,950	*21 350 *46,250	12 600 27,100	15 300 32,900	9250 20,000	11 700 25,200	7200 15,550	10 350 22,850	10 350 22,850	6450 390
-1500 mm -60 in	kg lb	*14 900 *33,650	*14 900 *33,650	*28 000 *60,750	19 000 40,850	*21 200 *45,850	12 400 26,750	15 150 32,550	9150 19,700	11 650 25,050	7150 15,450	11 100 24,450	11 100 24,450	6850 370
-3000 mm -120 in	kg lb	*23 850 *53,850	*23 850 *53,850	*25 650 *55,550	19 150 41,200	*19 850 *42,900	12 450 26,800	15 150 32,650	9150 19,750			12 550 27,800	7700 17,050	8570 340
-4500 mm -180 in	kg lb	*27 750 *59,900	*27 750 *59,900	*21 650 *46,650	19 550 42,050	*16 900 *36,200	12 700 27,400					*12 750 *27,950	9550 21,300	7430 290



ISO 10567



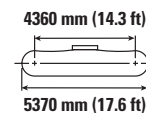
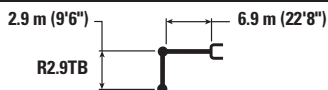
* Indicates that the load is limited by hydraulic lifting capacity rather than tipping load. The above loads are in compliance with hydraulic excavator lift capacity standard ISO 10567:2007. They do not exceed 87% of hydraulic lifting capacity or 75% of tipping load. Weight of all lifting accessories must be deducted from the above lifting capacities. Lifting capacities are based on the machine standing on a firm, uniform supporting surface. The use of a work tool attachment point to handle/lift objects, could affect the machine lift performance.

Lift capacity stays with ±5% for all available track shoes.

Always refer to the appropriate Operation and Maintenance Manual for specific product information.

349 Hydraulic Excavator Specifications

Reach Boom Lift Capacities – Counterweight: 9.0 mt (19,842 lb) – without Bucket, Heavy Lift: On



		3000 mm/120 in		4500 mm/180 in		6000 mm/240 in		7500 mm/300 in		9000 mm/360 in		mm in		
9000 mm 360 in	kg lb											*10 750 *23,900	*10 750 *23,900	6720 260
7500 mm 300 in	kg lb							*12 850 *27,950	11 100 23,750			*10 050 *22,200	9950 *22,200	7990 320
6000 mm 240 in	kg lb				*14 850 *32,150	*14 850 *32,150	*13 300 *28,950	10 900 23,450				*9850 *21,700	8350 18,600	8830 350
4500 mm 180 in	kg lb			*22 550 *48,300	22 500 *48,300	*17 000 *36,700	14 650 31,650	*14 300 *31,050	10 550 22,700	12 650 27,150	7950 17,100	*10 000 *22,000	7500 16,600	9340 370
3000 mm 120 in	kg lb			*19 150 *50,000	*19 150 44,600	*19 300 *41,600	13 850 29,900	*15 500 *33,550	10 150 21,850	12 400 26,700	7800 16,750	*10 450 *22,950	7050 15,550	9600 380
1500 mm 60 in	kg lb			*13 650 *33,550	*13 650 *33,550	*20 950 *45,250	13 250 28,550	16 000 34,400	9750 21,050	12 200 26,250	7600 16,350	11 100 24,450	6900 15,200	9610 380
0 mm 0 in	kg lb			*19 450 *45,400	*19 450 42,100	*21 500 *46,550	12 900 27,800	15 700 33,850	9550 20,550	12 050 26,000	7450 16,050	11 400 25,100	7050 15,550	9380 370
-1500 mm -60 in	kg lb	*15 000 *34,100	*15 000 *34,100	*27 200 *59,100	19 650 42,200	*20 950 *45,400	12 800 27,600	15 600 33,600	9450 20,350			12 300 27,100	7600 16,700	8880 350
-3000 mm -120 in	kg lb	*26 450 *59,800	*26 450 *59,800	*24 450 *53,000	19 850 42,700	*19 250 *41,550	12 900 27,800	*15 050 *32,250	9500 20,550			*13 400 *29,550	8650 19,200	8080 320
-4500 mm -180 in	kg lb			*19 900 *42,750	*19 900 *42,750	*15 600 *33,200	13 250 28,550					*12 900 *28,350	11 100 24,800	6860 270



ISO 10567



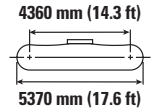
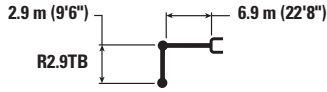
* Indicates that the load is limited by hydraulic lifting capacity rather than tipping load. The above loads are in compliance with hydraulic excavator lift capacity standard ISO 10567:2007. They do not exceed 87% of hydraulic lifting capacity or 75% of tipping load. Weight of all lifting accessories must be deducted from the above lifting capacities. Lifting capacities are based on the machine standing on a firm, uniform supporting surface. The use of a work tool attachment point to handle/lift objects, could affect the machine lift performance.

Lift capacity stays with ±5% for all available track shoes.

Always refer to the appropriate Operation and Maintenance Manual for specific product information.

349 Hydraulic Excavator Specifications

Reach Boom Lift Capacities – Counterweight: 9.0 mt (19,842 lb) – without Bucket, Heavy Lift: On



		3000 mm/120 in		4500 mm/180 in		6000 mm/240 in		7500 mm/300 in		9000 mm/360 in		mm in		
9000 mm 360 in	kg lb											*10 750 *23,900	*10 750 *23,900	6720 260
7500 mm 300 in	kg lb							*12 850 *27,950	10 950 23,450			*10 050 *22,200	9800 22,000	7990 320
6000 mm 240 in	kg lb					*14 850 *32,150	*14 850 *32,150	*13 300 *28,950	10 750 23,150			*9850 *21,700	8250 18,350	8830 350
4500 mm 180 in	kg lb			*22 550 *48,300	22 200 48,000	*17 000 *36,700	14 500 31,250	*14 300 *31,050	10 400 22,400	12 450 26,750	7850 16,900	*10 000 *22,000	7400 16,350	9340 370
3000 mm 120 in	kg lb			*19 150 *50,000	*19 150 44,000	*19 300 *41,600	13 700 29,500	*15 500 *33,550	10 000 21,550	12 250 26,300	7650 16,500	*10 450 *22,950	6950 15,300	9600 380
1500 mm 60 in	kg lb			*13 650 *33,550	*13 650 *33,550	*20 950 *45,250	13 050 28,150	15 750 33,900	9650 20,750	12 050 25,900	7500 16,100	10 950 24,050	6800 15,000	9610 380
0 mm 0 in	kg lb			*19 450 *45,400	19 300 41,500	*21 500 *46,550	12 750 27,450	15 500 33,350	9400 20,250	11 900 25,600	7350 15,850	11 250 24,700	6950 15,300	9380 370
-1500 mm -60 in	kg lb	*15 000 *34,100	*15 000 *34,100	*27 200 *59,100	19 350 41,600	*20 950 *45,400	12 650 27,200	15 400 33,100	9300 20,050			12 100 26,700	7450 16,450	8880 350
-3000 mm -120 in	kg lb	*26 450 *59,800	*26 450 *59,800	*24 450 *53,000	19 600 42,100	*19 250 *41,550	12 700 27,400	*15 050 *32,250	9400 20,250			*13 400 *29,550	8550 18,900	8080 320
-4500 mm -180 in	kg lb			*19 900 *42,750	*19 900 *42,750	*15 600 *33,200	13 050 28,150					*12 900 *28,350	10 900 24,450	6860 270



ISO 10567



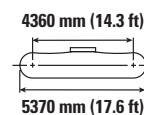
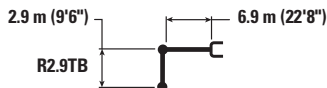
* Indicates that the load is limited by hydraulic lifting capacity rather than tipping load. The above loads are in compliance with hydraulic excavator lift capacity standard ISO 10567:2007. They do not exceed 87% of hydraulic lifting capacity or 75% of tipping load. Weight of all lifting accessories must be deducted from the above lifting capacities. Lifting capacities are based on the machine standing on a firm, uniform supporting surface. The use of a work tool attachment point to handle/lift objects, could affect the machine lift performance.

Lift capacity stays with ±5% for all available track shoes.

Always refer to the appropriate Operation and Maintenance Manual for specific product information.

349 Hydraulic Excavator Specifications

Reach Boom Lift Capacities – Counterweight: 9.0 mt (19,842 lb) – without Bucket, Heavy Lift: On



		3000 mm/120 in		4500 mm/180 in		6000 mm/240 in		7500 mm/300 in		9000 mm/360 in		mm in		
9000 mm 360 in	kg lb											*10 750 *23,900	*10 750 *23,900	6720 260
7500 mm 300 in	kg lb							*12 850 *27,950	10 850 23,200			*10 050 *22,200	9700 21,750	7990 320
6000 mm 240 in	kg lb					*14 850 *32,150	*14 850 *32,150	*13 300 *28,950	10 650 22,900			*9850 *21,700	8150 18,100	8830 350
4500 mm 180 in	kg lb			*22 550 *48,300	22 000 47,500	*17 000 *36,700	14 300 30,900	*14 300 *31,050	10 300 22,150	12 300 26,450	7750 16,700	*10 000 *22,000	7300 16,150	9340 370
3000 mm 120 in	kg lb			*19 150 *50,000	*19 150 43,550	*19 300 *41,600	13 500 29,200	*15 500 *33,550	9900 21,300	12 100 26,000	7550 16,300	*10 450 *22,950	6850 15,150	9600 380
1500 mm 60 in	kg lb			*13 650 *33,550	*13 650 *33,550	*20 950 *45,250	12 900 27,850	15 550 33,500	9500 20,500	11 900 25,550	7400 15,900	10 800 23,750	6750 14,800	9610 380
0 mm 0 in	kg lb			*19 450 *45,400	19 100 41,000	*21 500 46,300	12 550 27,100	15 300 32,900	9300 20,000	11 750 25,250	7250 15,650	11 100 24,400	6850 15,100	9380 370
-1500 mm -60 in	kg lb	*15 000 *34,100	*15 000 *34,100	*27 200 *59,100	19 150 41,100	*20 950 *45,400	12 450 26,850	15 200 32,700	9200 19,800			11 950 26,350	7350 16,250	8880 350
-3000 mm -120 in	kg lb	*26 450 *59,800	*26 450 *59,800	*24 450 *53,000	19 350 41,600	*19 250 *41,550	12 550 27,100	*15 050 *32,250	9250 20,000			*13 400 *29,550	8450 18,700	8080 320
-4500 mm -180 in	kg lb			*19 900 *42,750	19 800 42,600	*15 600 *33,200	12 900 27,850					*12 900 *28,350	10 800 24,150	6860 270



ISO 10567



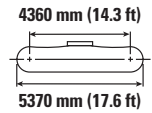
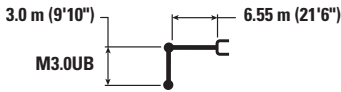
* Indicates that the load is limited by hydraulic lifting capacity rather than tipping load. The above loads are in compliance with hydraulic excavator lift capacity standard ISO 10567:2007. They do not exceed 87% of hydraulic lifting capacity or 75% of tipping load. Weight of all lifting accessories must be deducted from the above lifting capacities. Lifting capacities are based on the machine standing on a firm, uniform supporting surface. The use of a work tool attachment point to handle/lift objects, could affect the machine lift performance.

Lift capacity stays with ±5% for all available track shoes.

Always refer to the appropriate Operation and Maintenance Manual for specific product information.

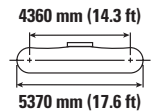
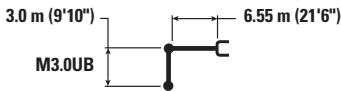
349 Hydraulic Excavator Specifications

Mass Boom Lift Capacities – Counterweight: 9.0 mt (19,842 lb) – without Bucket, Heavy Lift: On



		3000 mm/120 in		4500 mm/180 in		6000 mm/240 in		7500 mm/300 in		9000 mm/360 in		mm in		
7500 mm 300 in	kg lb							*11 500	10 800			*9950 *22,050	*9950 *22,050	7670 300
6000 mm 240 in	kg lb							*13 000 *28,400	10 700 22,950			*9700 *21,400	8550 19,000	8540 340
4500 mm 180 in	kg lb			*20 900 *44,850	*20 900 *44,850	*16 200 *35,100	14 550 31,400	*13 900 *30,150	10 300 22,200	*10 750	7650	*9800 *21,600	7550 16,750	9070 360
3000 mm 120 in	kg lb			*25 700 *55,200	20 750 44,850	*18 450 *39,900	13 700 29,550	*15 000 *32,550	9900 21,250	12 150 26,100	7450 16,050	*10 250 *22,500	7050 15,550	9330 370
1500 mm 60 in	kg lb			*22 850 *55,000	19 550 42,100	*20 200 *43,750	13 000 28,000	15 750 33,850	9500 20,400	11 900 25,650	7250 15,650	*11 050 *24,250	6900 15,150	9340 370
0 mm 0 in	kg lb			*25 950 *60,450	19 100 41,100	*20 950 *45,400	12 550 27,050	15 400 33,150	9200 19,800	11 800 7150		11 600 25,500	7050 15,450	9110 360
-1500 mm -60 in	kg lb	*17 850 *40,400	*17 850 *40,400	*27 150 *58,950	19 050 41,000	*20 550 *44,500	12 400 26,700	15 300 32,900	9100 19,550			12 550 27,700	7600 16,700	8600 340
-3000 mm -120 in	kg lb	*29 400 *66,600	*29 400 *66,600	*24 350 *52,700	19 300 41,450	*18 750 *40,500	12 500 26,900	*14 350 *30,500	9200 19,850			*13 500 *29,750	8800 19,500	7760 310
-4500 mm -180 in	kg lb			*19 350 *41,450	*19 350 *41,450	*14 650 *30,850	12 850 27,800					*12 950 *28,400	11 600 26,050	6480 260

Mass Boom Lift Capacities – Counterweight: 9.0 mt (19,842 lb) – without Bucket, Heavy Lift: On



		3000 mm/120 in		4500 mm/180 in		6000 mm/240 in		7500 mm/300 in		9000 mm/360 in		mm in		
7500 mm 300 in	kg lb							*11 500	10 650			*9950 *22,050	*9950 *22,050	7670 300
6000 mm 240 in	kg lb							*13 000 *28,400	10 550 22,650			*9700 *21,400	8450 18,750	8540 340
4500 mm 180 in	kg lb			*20 900 *44,850	*20 900 *44,850	*16 200 *35,100	14 350 31,000	*13 900 *30,150	10 200 21,900	*10 750	7550	*9800 *21,600	7450 16,500	9070 360
3000 mm 120 in	kg lb			*25 700 *55,200	20 500 44,250	*18 450 *39,900	13 500 29,150	*15 000 *32,550	9750 20,950	11 950 25,700	7350 15,800	*10 250 *22,500	6950 15,300	9330 370
1500 mm 60 in	kg lb			*22 850 *55,000	19 250 41,500	*20 200 *43,750	12 800 27,600	15 500 33,350	9350 20,100	11 750 25,250	7150 15,400	*11 050 *24,250	6800 14,900	9340 370
0 mm 0 in	kg lb			*25 950 *60,450	18 850 40,500	*20 950 *45,400	12 350 26,650	15 200 32,650	9050 19,500	11 600 7050		11 400 25,150	6900 15,250	9110 360
-1500 mm -60 in	kg lb	*17 850 *40,400	*17 850 *40,400	*27 150 *58,950	18 800 40,400	*20 550 *44,500	12 200 26,300	15 050 32,400	8950 19,250			12 350 27,300	7450 16,450	8600 340
-3000 mm -120 in	kg lb	*29 400 *66,600	*29 400 *66,600	*24 350 *52,700	19 000 40,850	*18 750 *40,500	12 300 26,500	*14 350 *30,500	9050 19,550			*13 500 *29,750	8650 19,200	7760 310
-4500 mm -180 in	kg lb			*19 350 *41,450	*19 350 *41,450	*14 650 *30,850	12 700 27,400					*12 950 *28,400	11 450 25,700	6480 260



ISO 10567



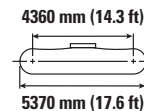
* Indicates that the load is limited by hydraulic lifting capacity rather than tipping load. The above loads are in compliance with hydraulic excavator lift capacity standard ISO 10567:2007. They do not exceed 87% of hydraulic lifting capacity or 75% of tipping load. Weight of all lifting accessories must be deducted from the above lifting capacities. Lifting capacities are based on the machine standing on a firm, uniform supporting surface. The use of a work tool attachment point to handle/lift objects, could affect the machine lift performance.

Lift capacity stays with ±5% for all available track shoes.

Always refer to the appropriate Operation and Maintenance Manual for specific product information.

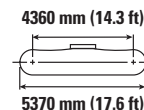
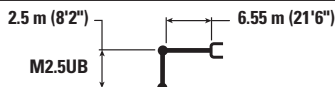
349 Hydraulic Excavator Specifications

Mass Boom Lift Capacities – Counterweight: 9.0 mt (19,842 lb) – without Bucket, Heavy Lift: On



		3000 mm/120 in		4500 mm/180 in		6000 mm/240 in		7500 mm/300 in		9000 mm/360 in		mm in		
7500 mm 300 in	kg lb							*11 500	10 550			*9950 *22,050	*9950 *22,050	7670 300
6000 mm 240 in	kg lb							*13 000 *28,400	10 450 22,400			*9700 *21,400	8350 18,550	8540 340
4500 mm 180 in	kg lb			*20 900 *44,850	*20 900 *44,850	*16 200 *35,100	14 200 30,650	*13 900 *30,150	10 050 21,650	*10 750	7450	*9800 *21,600	7350 16,300	9070 360
3000 mm 120 in	kg lb			*25 700 *55,200	20 250 43,750	*18 450 *39,900	13 350 28,800	*15 000 *32,550	9650 20,700	11 800	7250	*10 250 *22,500	6850 15,100	9330 370
1500 mm 60 in	kg lb			*22 850 *55,000	19 050 41,000	*20 200 *43,750	12 650 27,250	15 300 32,950	9250 19,850	11 600	7050	10 950 24,150	6700 14,700	9340 370
0 mm 0 in	kg lb			*25 950 *60,450	18 600 40,000	*20 950 *45,400	12 200 26,300	15 000 32,250	8950 19,250	11 450	6950	11 250 24,800	6850 15,050	9110 360
-1500 mm -60 in	kg lb	*17 850 *40,400	*17 850 *40,400	*27 150 *58,950	18 550 39,900	*20 550 *44,500	12 050 25,950	14 850 32,000	8850 19,000			12 200 26,950	7350 16,250	8600 340
-3000 mm -120 in	kg lb	*29 400 *66,600	*29 400 *66,600	*24 350 *52,700	18 800 40,350	*18 750 *40,500	12 150 26,150	*14 350 *30,500	8950 19,300			*13 500 *29,750	8550 18,950	7760 310
-4500 mm -180 in	kg lb			*19 350 *41,450	19 300 *41,450	*14 650 *30,850	12 550 27,050					*12 950 *28,400	11 300 25,350	6480 260

Mass Boom Lift Capacities – Counterweight: 9.0 mt (19,842 lb) – without Bucket, Heavy Lift: On



		3000 mm/120 in		4500 mm/180 in		6000 mm/240 in		7500 mm/300 in		mm in		
7500 mm 300 in	kg lb									*13 050 *28,850	11 700 26,350	7110 280
6000 mm 240 in	kg lb					*15 300 *33,250	15 150 32,600	*13 850 *30,300	10 600 22,700	*12 650 *27,900	9400 20,950	8030 320
4500 mm 180 in	kg lb			*22 750 *48,750	22 200 47,950	*17 200 *37,200	14 400 31,050	*14 600 *31,750	10 250 22,100	*12 850 *28,200	8250 18,250	8600 340
3000 mm 120 in	kg lb			*58,250	43,900	*19 300 *41,700	13 600 29,300	*15 600 *33,800	9850 21,250	12 400 27,400	7650 16,850	8880 350
1500 mm 60 in	kg lb					*20 750 *44,950	12 950 27,950	15 750 33,900	9500 20,500	12 200 26,900	7450 16,450	8890 350
0 mm 0 in	kg lb			*23 950 *56,300	19 250 41,400	*21 150 *45,800	12 650 27,200	15 500 33,350	9300 20,000	12 600 27,800	7650 16,900	8640 340
-1500 mm -60 in	kg lb	*18 000 *41,050	*18 000 *41,050	*26 250 *57,050	19 350 41,500	*20 300 *43,950	12 550 27,050	15 450 33,250	9250 19,900	13 850 30,550	8350 18,450	8100 320
-3000 mm -120 in	kg lb	*28 000 *61,050	*28 000 *61,050	*22 900 *49,600	19 600 42,150	*17 950 *38,600	12 700 27,400			*14 100 *31,000	9950 22,050	7210 290
-4500 mm -180 in	kg lb			*16 950 *36,050	*16 950 *36,050					*12 900 *28,100	*12 900 *28,100	5800 230



ISO 10567



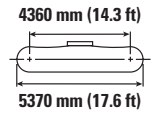
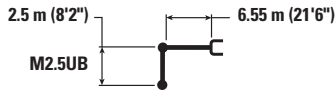
* Indicates that the load is limited by hydraulic lifting capacity rather than tipping load. The above loads are in compliance with hydraulic excavator lift capacity standard ISO 10567:2007. They do not exceed 87% of hydraulic lifting capacity or 75% of tipping load. Weight of all lifting accessories must be deducted from the above lifting capacities. Lifting capacities are based on the machine standing on a firm, uniform supporting surface. The use of a work tool attachment point to handle/lift objects, could affect the machine lift performance.

Lift capacity stays with ±5% for all available track shoes.

Always refer to the appropriate Operation and Maintenance Manual for specific product information.

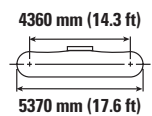
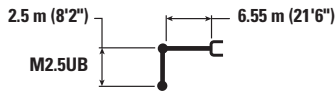
349 Hydraulic Excavator Specifications

Mass Boom Lift Capacities – Counterweight: 9.0 mt (19,842 lb) – without Bucket, Heavy Lift: On



Boom Length mm in	Unit	3000 mm/120 in		4500 mm/180 in		6000 mm/240 in		7500 mm/300 in		mm in		
7500 mm 300 in	kg lb									*13 050 *28,850	11 550 26,000	7110 280
6000 mm 240 in	kg lb					*15 300 *33,250	14 950 32,200	*13 850 *30,300	10 450 22,400	*12 650 *27,900	9300 20,650	8030 320
4500 mm 180 in	kg lb			*22 750 *48,750	21 950 47,350	*17 200 *37,200	14 200 30,650	*14 600 *31,750	10 100 21,800	*12 850 *28,200	8100 17,950	8600 340
3000 mm 120 in	kg lb			*58,250	43,300	*19 300 *41,700	13 400 28,900	*15 600 *33,800	9700 20,950	12 250 27,000	7550 16,600	8880 350
1500 mm 60 in	kg lb					*20 750 *44,950	12 750 27,550	15 500 33,400	9350 20,200	12 050 26,500	7350 16,200	8890 350
0 mm 0 in	kg lb			*23 950 *56,300	19 000 40,800	*21 150 *45,800	12 450 26,800	15 250 32,850	9150 19,700	12 450 27,400	7550 16,650	8640 340
-1500 mm -60 in	kg lb	*18 000 *41,050	*18 000 *41,050	*26 250 *57,050	19 050 40,950	*20 300 *43,950	12 350 26,650	15 200 32,750	9100 19,600	13 650 30,100	8250 18,200	8100 320
-3000 mm -120 in	kg lb	*28 000 *61,050	*28 000 *61,050	*22 900 *49,600	19 350 41,550	*17 950 *38,600	12 550 27,000			*14 100 *31,000	9800 21,750	7210 290
-4500 mm -180 in	kg lb			*16 950 *36,050	*16 950 *36,050					*12 900 *28,100	*12 900 *28,100	5800 230

Mass Boom Lift Capacities – Counterweight: 9.0 mt (19,842 lb) – without Bucket, Heavy Lift: On



Boom Length mm in	Unit	3000 mm/120 in		4500 mm/180 in		6000 mm/240 in		7500 mm/300 in		mm in		
7500 mm 300 in	kg lb									*13 050 *28,850	11 400 25,750	7110 280
6000 mm 240 in	kg lb					*15 300 *33,250	14 800 31,850	*13 850 *30,300	10 300 22,150	*12 650 *27,900	9200 20,400	8030 320
4500 mm 180 in	kg lb			*22 750 *48,750	21 700 46,850	*17 200 *37,200	14 050 30,300	*14 600 *31,750	10 000 21,550	*12 850 *28,200	8050 17,750	8600 340
3000 mm 120 in	kg lb			*58,250	42,800	*19 300 *41,700	13 250 28,550	*15 600 *33,800	9600 20,700	12 100 26,650	7450 16,400	8880 350
1500 mm 60 in	kg lb					*20 750 *44,950	12 600 27,200	15 350 32,950	9250 19,950	11 900 26,150	7250 16,000	8890 350
0 mm 0 in	kg lb			*23 950 *56,300	18 750 40,300	*21 150 *45,750	12 300 26,450	15 050 32,450	9050 19,450	12 250 27,000	7450 16,400	8640 340
-1500 mm -60 in	kg lb	*18 000 *41,050	*18 000 *41,050	*26 250 *57,050	18 800 40,450	*20 300 *43,950	12 200 26,300	15 000 32,350	9000 19,350	13 450 29,700	8150 17,950	8100 320
-3000 mm -120 in	kg lb	*28 000 *61,050	*28 000 *61,050	*22 900 *49,600	19 100 41,050	*17 950 *38,600	12 400 26,700			*14 100 *31,000	9700 21,450	7210 290
-4500 mm -180 in	kg lb			*16 950 *36,050	*16 950 *36,050					*12 900 *28,100	*12 900 *28,100	5800 230



ISO 10567



* Indicates that the load is limited by hydraulic lifting capacity rather than tipping load. The above loads are in compliance with hydraulic excavator lift capacity standard ISO 10567:2007. They do not exceed 87% of hydraulic lifting capacity or 75% of tipping load. Weight of all lifting accessories must be deducted from the above lifting capacities. Lifting capacities are based on the machine standing on a firm, uniform supporting surface. The use of a work tool attachment point to handle/lift objects, could affect the machine lift performance.

Lift capacity stays with ±5% for all available track shoes.

Always refer to the appropriate Operation and Maintenance Manual for specific product information.

349 Hydraulic Excavator Specifications

Bucket Specifications and Compatibility – Africa, Middle East

	Linkage	Fixed Gauge Long Undercarriage											
		9.0 mt (19,842 lb) Counterweight											
		Width		Capacity		Weight		Fill	Reach Boom 6.9 m (22'8")		Mass Boom 6.55 m (21'6")		
	mm	in	m ³	yd ³	kg	lb	%	R3.35 (11'0")	R3.9 (12'10")	M2.5 (8'2")	M3.0 (9'10")		
Pin-On (No Quick Coupler)													
Heavy Duty	TB	1650	66	2.41	3.15	2220	4,894	100	⊙	⊖			
	TB	1850	72	2.69	3.52	2349	5,179	100	⊖	○			
	TB	1900	74	2.78	3.64	2427	5,350	100	⊖	○			
Severe Duty Spade	TB	1350	54	1.87	2.44	2053	4,526	90	●	●			
	TB	1650	66	2.41	3.15	2367	5,218	90	⊙	⊙			
	TB	1900	75	2.78	3.64	2723	6,003	90	⊖	○			
Severe Duty	TB	1550	61	2.14	2.80	2327	5,129	90	●	⊙			
	TB	1700	67	2.41	3.16	2479	5,464	90	⊙	⊖			
Extreme Duty	TB	1700	67	2.41	3.16	2722	6,000	90	⊙	⊖			
Extreme Duty Spade	TB	1950	77	2.78	3.64	2974	6,556	90	⊖	○			
General Duty	UB	2000	79	3.60	4.71	2890	6,371	100			○	◇	
Heavy Duty	UB	1850	73	3.21	4.20	2758	6,079	100			⊖	○	
	UB	1950	77	3.43	4.48	2912	6,419	100			○	◇	
Severe Duty	UB	1550	61	2.61	3.41	2658	5,859	90			●	⊙	
	UB	1650	65	2.77	3.62	2738	6,035	90			⊙	⊖	
	UB	1850	73	3.21	4.20	2972	6,552	90			⊖	○	
	UB	1950	77	3.43	4.48	3106	6,847	90			○	○	
Extreme Duty	UB	1650	65	2.77	3.62	3223	7,105	90			⊙	⊖	
Maximum load with pin-on (payload + bucket)							kg	6570	6130	7495	6785		
							lb	14,484	13,514	16,524	14,958		

The above loads are in compliance with hydraulic excavator standard EN474-5:2006 + A3:2013, they do not exceed 87% of hydraulic lifting capacity or 75% of tipping capacity with front linkage fully extended at ground line with bucket curled.

Capacity based on ISO 7451:2007.

Bucket weight with Long tips.

Maximum Material Density:

- 2100 kg/m³ (3,500 lb/yd³)
- ⊙ 1800 kg/m³ (3,000 lb/yd³)
- ⊖ 1500 kg/m³ (2,500 lb/yd³)
- 1200 kg/m³ (2,000 lb/yd³)
- ◇ 900 kg/m³ (1,500 lb/yd³)

Caterpillar recommends using appropriate work tools to maximize the value customers receive from our products. Use of work tools, including buckets, which are outside of Caterpillar's recommendations or specifications for weight, dimensions, flows, pressures, etc. may result in less-than-optimal performance, including but not limited to reductions in production, stability, reliability, and component durability. Improper use of a work tool resulting in sweeping, prying, twisting and/or catching of heavy loads will reduce the life of the boom and stick.

349 Hydraulic Excavator Specifications

Bucket Specifications and Compatibility – CIS

	Linkage	Fixed Gauge Long Undercarriage										
		9.0 mt (19,842 lb) Counterweight										
		Width		Capacity		Weight		Fill	Reach Boom 6.9 m (22'8")	Mass Boom 6.55 m (21'6")		
		mm	in	m ³	yd ³	kg	lb	%	R3.35 (11'0")	M2.5 (8'2")	M3.0 (9'10")	
Pin-On (No Quick Coupler)												
Heavy Duty	TB	1650	66	2.41	3.15	2220	4,894	100	⊙			
	TB	1850	72	2.69	3.52	2349	5,179	100	⊖			
	TB	1900	74	2.78	3.64	2427	5,350	100	⊖			
Severe Duty Spade	TB	1350	54	1.87	2.44	2053	4,526	90	●			
	TB	1650	66	2.41	3.15	2367	5,218	90	⊙			
	TB	1900	75	2.78	3.64	2723	6,003	90	⊖			
Severe Duty	TB	1550	61	2.14	2.80	2327	5,129	90	●			
	TB	1700	67	2.41	3.16	2479	5,464	90	⊙			
Extreme Duty	TB	1700	67	2.41	3.16	2722	6,000	90	⊙			
Extreme Duty Spade	TB	1950	77	2.78	3.64	2974	6,556	90	⊖			
General Duty	UB	2000	79	3.60	4.71	2890	6,371	100		○	◇	
Heavy Duty	UB	1850	73	3.21	4.20	2758	6,079	100		⊖	○	
	UB	1950	77	3.43	4.48	2912	6,419	100		○	◇	
Severe Duty	UB	1550	61	2.61	3.41	2658	5,859	90		●	⊙	
	UB	1650	65	2.77	3.62	2738	6,035	90		⊙	⊖	
	UB	1850	73	3.21	4.20	2972	6,552	90		⊖	○	
	UB	1950	77	3.43	4.48	3106	6,847	90		○	○	
Extreme Duty	UB	1650	65	2.77	3.62	3223	7,105	90		⊙	⊖	
Maximum load with pin-on (payload + bucket)								kg	6570	7495	6785	
								lb	14,484	16,524	14,958	

The above loads are in compliance with hydraulic excavator standard EN474-5:2006 + A3:2013, they do not exceed 87% of hydraulic lifting capacity or 75% of tipping capacity with front linkage fully extended at ground line with bucket curled.

Capacity based on ISO 7451:2007.

Bucket weight with Long tips.

Maximum Material Density:

- 2100 kg/m³ (3,500 lb/yd³)
- ⊙ 1800 kg/m³ (3,000 lb/yd³)
- ⊖ 1500 kg/m³ (2,500 lb/yd³)
- 1200 kg/m³ (2,000 lb/yd³)
- ◇ 900 kg/m³ (1,500 lb/yd³)

Caterpillar recommends using appropriate work tools to maximize the value customers receive from our products. Use of work tools, including buckets, which are outside of Caterpillar's recommendations or specifications for weight, dimensions, flows, pressures, etc. may result in less-than-optimal performance, including but not limited to reductions in production, stability, reliability, and component durability. Improper use of a work tool resulting in sweeping, prying, twisting and/or catching of heavy loads will reduce the life of the boom and stick.

349 Hydraulic Excavator Specifications

Bucket Specifications and Compatibility – SE Asia

	Linkage	Width		Capacity		Weight		Fill	Fixed Gauge Long Undercarriage			
		mm	in	m ³	yd ³	kg	lb		9.0 mt (19,842 lb) Counterweight		Mass Boom	
									Reach Boom 6.9 m (22'8")		6.55 m (21'6")	
									R3.35 (11'0")	R3.9 (12'10")	M2.5 (8'2")	M3.0 (9'10")
Pin-On (No Quick Coupler)												
Heavy Duty	TB	1650	65	2.41	3.15	2392	5,273	100	⊙	⊖		
	TB	1950	77	3.08	4.03	2710	5,974	100	○	◇		
Severe Duty	TB	1650	65	2.41	3.16	2497	5,504	90	⊙	⊖		
Severe Duty Spade	TB	1750	69	2.40	3.14	2544	5,608	90	⊙	⊖		
General Duty	UB	1550	62	2.61	3.41	2341	5,162	100			⊙	⊖
	UB	1950	77	3.43	4.48	2717	5,989	100			○	○
Severe Duty Spade	UB	1550	61	2.61	3.41	2656	5,855	90			●	⊙
Maximum load with pin-on (payload + bucket)								kg	6570	6130	7495	6785
								lb	14,484	13,514	16,524	14,958
With Cat Pin Grabber Coupler												
Heavy Duty	TB	1650	65	2.41	3.15	2392	5,273	100	○	◇		
	TB	1950	77	3.08	4.03	2710	5,974	100	◇	X		
Severe Duty Spade	TB	1750	69	2.40	3.14	2544	5,608	90	○	○		
Maximum load with coupler (payload + bucket)								kg	5520	5081		
								lb	12,170	11,201		

Bucket Specifications and Compatibility – South America

	Linkage	Width		Capacity		Weight		Fill	Fixed Gauge Long Undercarriage	
		mm	in	m ³	yd ³	kg	lb		9.0 mt (19,842 lb) Counterweight	
									Mass Boom 6.55 m (21'6")	
									M2.5 (8'2")	M3.0 (9'10")
Pin-On (No Quick Coupler)										
Heavy Duty	UB	1650	65	2.77	3.62	2573	5,672	100	⊙	⊖
	UB	1850	73	3.21	4.20	2758	6,079	100	⊖	○
	UB	1950	77	3.43	4.48	2912	6,419	100	○	◇
Severe Duty	UB	1850	73	3.21	4.20	2972	6,552	90	⊖	○
Extreme Duty	UB	1600	63	2.61	3.41	3106	6,847	90	⊙	⊖
Extreme Duty Spade	UB	1600	63	2.66	3.48	3217	7,091	90	⊙	⊖
Maximum load with pin-on (payload + bucket)								kg	7495	6785
								lb	16,524	14,958

The above loads are in compliance with hydraulic excavator standard EN474-5:2006 + A3:2013, they do not exceed 87% of hydraulic lifting capacity or 75% of tipping capacity with front linkage fully extended at ground line with bucket curled.

Capacity based on ISO 7451:2007.

Bucket weight with Long tips.

Maximum Material Density:

- 2100 kg/m³ (3,500 lb/yd³)
- ⊙ 1800 kg/m³ (3,000 lb/yd³)
- ⊖ 1500 kg/m³ (2,500 lb/yd³)
- 1200 kg/m³ (2,000 lb/yd³)
- ◇ 900 kg/m³ (1,500 lb/yd³)
- X Not Recommended

Caterpillar recommends using appropriate work tools to maximize the value customers receive from our products. Use of work tools, including buckets, which are outside of Caterpillar's recommendations or specifications for weight, dimensions, flows, pressures, etc. may result in less-than-optimal performance, including but not limited to reductions in production, stability, reliability, and component durability. Improper use of a work tool resulting in sweeping, prying, twisting and/or catching of heavy loads will reduce the life of the boom and stick.

349 Hydraulic Excavator Specifications

Attachments Offering Guide – Africa, Middle East

Not all Attachments are available in all regions. Consult your Cat dealer for configurations available in your region.

Match

* Working range front only

No Match

PIN-ON ATTACHMENTS

Undercarriage		L			
Counterweight		9.0 mt (19,842 lb)			
Boom Type		Reach		ME	
Stick Length		2.9 m (9'6")	3.35 m (11'0")	2.5 m (8'2")	3.0 m (9'10")
Hydraulic Hammers	H160 GC	✓	✓	✓	✓
	H160 GC S	✓	✓	✓	✓
	H160 S			✓	✓
	H180 GC	✓	✓	✓	✓
	H180 GC S	✓	✓	✓	✓
	H180 S			✓	✓
Multi-Processors	MP345 Concrete Cutter Jaw			✓	✓
	MP345 Demolition Jaw			✓	✓
	MP345 Pulverizer Jaw			✓	✓
	MP345 Shear Jaw			✓	✓
	MP365 Concrete Cutter Jaw			✓	✓*
	MP365 Demolition Jaw			✓*	
	MP365 Pulverizer Jaw			✓*	
MP365 Shear Jaw			✓*		
Demolition and Sorting Grapples	G345			✓	✓
Mobile Scrap and Demolition Shears	S3050			✓	✓
	S3050 Flat Top			✓	✓
Pulverizers	P235			✓	✓
Crushers	P335			✓	✓
	P360			✓	✓*

(continued on next page)

349 Hydraulic Excavator Specifications

Attachments Offering Guide – Africa, Middle East *(continued)*

Not all Attachments are available in all regions. Consult your Cat dealer for configurations available in your region.

Match

CAT PIN GRABBER ATTACHMENTS

Undercarriage		L			
		9.0 mt (19,842 lb)			
Counterweight		Reach		ME	
		2.9 m (9'6")	3.35 m (11'0")	2.5 m (8'2")	3.0 m (9'10")
Boom Type					
Stick Length					
Hydraulic Hammers	H160 GC	✓	✓	✓	✓
	H160 GC S	✓	✓	✓	✓
	H180 GC	✓	✓	✓	✓
	H180 GC S	✓	✓	✓	✓

(continued on next page)

349 Hydraulic Excavator Specifications

Attachments Offering Guide – Africa, Middle East (continued)

Not all Attachments are available in all regions. Consult your Cat dealer for configurations available in your region.

Match
 * Working range front only
 No Match

CW-55 DEDICATED COUPLER ATTACHMENTS

Undercarriage		L	
Counterweight		9.0 mt (19,842 lb)	
Boom Type		ME	
Stick Length		2.5 m (8'2")	3.0 m (9'10")
Hydraulic Hammers	H160 S	✓	✓
	H180 S	✓	✓
Multi-Processors	MP345 Concrete Cutter Jaw	✓	✓
	MP345 Demolition Jaw	✓	✓
	MP345 Pulverizer Jaw	✓	✓
	MP345 Shear Jaw	✓	✓
Demolition and Sorting Grapples	G345	✓	✓
Mobile Scrap and Demolition Shears	S3050	✓	✓*
	S3050 Flat Top	✓*	
Pulverizers	P235	✓	✓
Crushers	P335	✓	✓

BOOM-MOUNT ATTACHMENTS

Undercarriage		L	
Counterweight		9.0 mt (19,842 lb)	
Boom Type		ME	
Mobile Scrap and Demolition Shears	S2090	✓	
	S3070	✓	
	S3090	✓	

349 Hydraulic Excavator Specifications

Attachments Offering Guide – CIS

Not all Attachments are available in all regions. Consult your Cat dealer for configurations available in your region.

Match * Working range front only No Match

PIN-ON ATTACHMENTS

Undercarriage		L		
Counterweight		9.0 mt (19,842 lb)		
Boom Type		Reach		ME
Stick Length		3.35 m (11'0")	2.5 m (8'2")	3.0 m (9'10")
Hydraulic Hammers	H160 GC	✓	✓	✓
	H160 GC S	✓	✓	✓
	H160 S		✓	✓
	H180 GC	✓	✓	✓
	H180 GC S	✓	✓	✓
	H180 S		✓	✓
Multi-Processors	MP345 Concrete Cutter Jaw		✓	✓
	MP345 Demolition Jaw		✓	✓
	MP345 Pulverizer Jaw		✓	✓
	MP345 Shear Jaw		✓	✓
	MP365 Concrete Cutter Jaw		✓	✓*
	MP365 Demolition Jaw		✓*	
	MP365 Pulverizer Jaw		✓*	
MP365 Shear Jaw		✓*		
Demolition and Sorting Grapples	G345		✓	✓
Mobile Scrap and Demolition Shears	S3050		✓	✓
	S3050 Flat Top		✓	✓
Pulverizers	P235		✓	✓
Crushers	P335		✓	✓
	P360		✓	✓*

(continued on next page)

349 Hydraulic Excavator Specifications

Attachments Offering Guide – CIS *(continued)*

Not all Attachments are available in all regions. Consult your Cat dealer for configurations available in your region.

Match

CAT PIN GRABBER ATTACHMENTS

Undercarriage		L		
Counterweight		9.0 mt (19,842 lb)		
Boom Type		Reach		ME
Stick Length		3.35 m (11'0")	2.5 m (8'2")	3.0 m (9'10")
Hydraulic Hammers	H160 GC	✓	✓	✓
	H160 GC S	✓	✓	✓
	H180 GC	✓	✓	✓
	H180 GC S	✓	✓	✓

(continued on next page)

349 Hydraulic Excavator Specifications

Attachments Offering Guide – CIS (continued)

Not all Attachments are available in all regions. Consult your Cat dealer for configurations available in your region.

Match * Working range front only No Match

CW-55 DEDICATED COUPLER ATTACHMENTS

Undercarriage		L	
Counterweight		9.0 mt (19,842 lb)	
Boom Type		ME	
Stick Length		2.5 m (8'2")	3.0 m (9'10")
Hydraulic Hammers	H160 S	✓	✓
	H180 S	✓	✓
Multi-Processors	MP345 Concrete Cutter Jaw	✓	✓
	MP345 Demolition Jaw	✓	✓
	MP345 Pulverizer Jaw	✓	✓
	MP345 Shear Jaw	✓	✓
Demolition and Sorting Grapples	G345	✓	✓
Mobile Scrap and Demolition Shears	S3050	✓	✓*
	S3050 Flat Top	✓*	
Pulverizers	P235	✓	✓
Crushers	P335	✓	✓

BOOM-MOUNT ATTACHMENTS

Undercarriage		L	
Counterweight		9.0 mt (19,842 lb)	
Boom Type		ME	
Mobile Scrap and Demolition Shears	S2090	✓	
	S3070	✓	
	S3090	✓	

349 Hydraulic Excavator Specifications

Attachments Offering Guide – SE Asia

Not all Attachments are available in all regions. Consult your Cat dealer for configurations available in your region.

Match

No Match

PIN-ON ATTACHMENTS

Undercarriage		L			
Counterweight		9.0 mt (19,842 lb)			
Boom Type		Reach		ME	
Stick Length		3.35 m (11'0")	3.9 m (12'10")	2.5 m (8'2")	3.0 m (9'10")
Hydraulic Hammers	H160 GC	✓	✓	✓	✓
	H160 GC S	✓	✓	✓	✓
	H160 S			✓	✓
	H180 GC	✓	✓	✓	✓
	H180 GC S	✓	✓	✓	✓
	H180 S			✓	✓

349 Hydraulic Excavator Specifications

Attachments Offering Guide – South America

Not all Attachments are available in all regions. Consult your Cat dealer for configurations available in your region.

Match

* Working range front only

No Match

PIN-ON ATTACHMENTS

Undercarriage		L	
Counterweight		9.0 mt (19,842 lb)	
Boom Type		ME	
Stick Length		2.5 m (8'2")	3.0 m (9'10")
Hydraulic Hammers	H160 GC	✓	✓
	H160 GC S	✓	✓
	H160 S	✓	✓
	H180 GC	✓	✓
	H180 GC S	✓	✓
	H180 S	✓	✓
Multi-Processors	MP345 Concrete Cutter Jaw	✓	✓
	MP345 Demolition Jaw	✓	✓
	MP345 Pulverizer Jaw	✓	✓
	MP345 Shear Jaw	✓	✓
	MP365 Concrete Cutter Jaw	✓	✓*
	MP365 Demolition Jaw	✓*	
	MP365 Pulverizer Jaw	✓*	
MP365 Shear Jaw	✓*		
Demolition and Sorting Grapples	G345	✓	✓
Mobile Scrap and Demolition Shears	S3050	✓	✓
	S3050 Flat Top	✓	✓
Pulverizers	P235	✓	✓

CAT PIN GRABBER ATTACHMENTS

Undercarriage		L	
Counterweight		9.0 mt (19,842 lb)	
Boom Type		ME	
Stick Length		2.5 m (8'2")	3.0 m (9'10")
Hydraulic Hammers	H160 GC	✓	✓
	H160 GC S	✓	✓
	H180 GC	✓	✓
	H180 GC S	✓	✓

(continued on next page)

349 Hydraulic Excavator Specifications

Attachments Offering Guide – South America *(continued)*

Not all Attachments are available in all regions. Consult your Cat dealer for configurations available in your region.

Match * Working range front only No Match

CW-55 DEDICATED COUPLER ATTACHMENTS

Undercarriage		L	
Counterweight		9.0 mt (19,842 lb)	
Boom Type		ME	
Stick Length		2.5 m (8'2")	3.0 m (9'10")
Hydraulic Hammers	H160 S	✓	✓
	H180 S	✓	✓
Multi-Processors	MP345 Concrete Cutter Jaw	✓	✓
	MP345 Demolition Jaw	✓	✓
	MP345 Pulverizer Jaw	✓	✓
	MP345 Shear Jaw	✓	✓
Demolition and Sorting Grapples	G345	✓	✓
Mobile Scrap and Demolition Shears	S3050	✓	✓*
	S3050 Flat Top	✓*	
Pulverizers	P235	✓	✓

BOOM-MOUNT ATTACHMENTS

Undercarriage		L	
Counterweight		9.0 mt (19,842 lb)	
Boom Type		ME	
Mobile Scrap and Demolition Shears	S2090	✓	
	S3070	✓	
	S3090	✓	

Standard and Optional Equipment

Standard and optional equipment may vary. Consult your Cat dealer for details.

	Standard	Optional		Standard	Optional
ENGINE			UNDERCARRIAGE AND STRUCTURES		
Cold start block heaters		✓	Towing eye on base frame	✓	
Three selectable modes: Power, Smart, Eco	✓		Full-length track guiding guards		✓
Automatic engine speed control	✓		Segmented track guiding guards		✓
Up to 4500 m (14,764 ft) altitude capability	✓		Swivel guard*	✓	✓
52° C (126° F) high-ambient cooling capacity	✓		Grease lubricated track	✓	
Hydraulic reverse fan		✓	9.0 mt (19,842 lb) counterweight	✓	
-18° C (0° F) cold start capability	✓		600 mm (24") double grouser track shoes		✓
-32° C (-25° F) cold start capability		✓	600 mm (24") heavy duty double grouser track shoes		✓
Double element air filter with integrated precleaner	✓		600 mm (24") triple grouser track shoes		✓
115 amp alternator	✓		750 mm (30") triple grouser track shoes		✓
Single plane three horizontal cooling system	✓		900 mm (35") triple grouser track shoes		✓
Dual stage 5.5 micron primary filter and 4.4 micron 2nd/3rd filters	✓		BOOMS, STICKS AND LINKAGES		
Secure start with PIN code	✓		6.55 m (21'6") Mass boom		✓
Biodiesel capability up to B20	✓		6.9 m (22'8") Reach boom		✓
HYDRAULIC SYSTEM			2.5 m (8'2") stick		✓
Boom and stick regeneration circuit	✓		2.9 m (9'6") stick		✓
Electronic main control valve	✓		3.0 m (9'10") stick		✓
Heavy lift mode		✓	3.35 m (11'0") stick		✓
Automatic hydraulic oil warm up	✓		3.9 m (12'10") stick		✓
Automatic swing parking brake	✓		Bucket Linkage, TB family with lifting eye, Cat GRADE		✓
High performance hydraulic return filter	✓		Bucket Linkage, TB family without lifting eye, Cat GRADE		✓
Two speed travel	✓		Bucket Linkage, UB family without lifting eye, Cat GRADE		✓
Bio hydraulic oil capability	✓				
Fine swing		✓			
Basic one-way tool control		✓			
Combined two-way tool control		✓			
Combined two-way tool control + hammer return filter		✓			
Medium-pressure auxiliary circuit		✓			
Quick coupler circuit		✓			

(continued on next page)

*Standard in CIS, SE Asia, and South America.
Optional in Africa, Middle East.

349 Standard and Optional Equipment

Standard and Optional Equipment (continued)

Standard and optional equipment may vary. Consult your Cat dealer for details.

	Standard	Optional		Standard	Optional
ELECTRICAL SYSTEM			SERVICE AND MAINTENANCE		
Maintenance-free 1,000 CCA batteries (×4)	✓		Grouped location of engine oil and fuel filters	✓	
Centralized electrical disconnect switch	✓		Scheduled Oil Sampling (S·O·S SM) ports	✓	
LED chassis light, LH and RH boom lights, cab lights	✓		QuickEvac TM maintenance ready		✓
Premium surround lighting package		✓	Electric refueling pump		✓
CAT TECHNOLOGY			SAFETY AND SECURITY		
Cat Product Link TM	✓		Caterpillar One Key security system	✓	
Work tool recognition	✓		Lockable external tool/storage box	✓	
Cat GRADE with 2D	✓		Lockable door, fuel, and hydraulic tank locks	✓	
Cat GRADE with Advanced 2D		✓	Lockable fuel drain compartment	✓	
Cat GRADE with 3D connectivity:		✓	Service platform with anti-skid plate and recessed bolts	✓	
– Virtual Reference Station**			RH handrail and hand hold (ISO 2867:2011 compliant)	✓	
– Internet Base Service Station**			Standard visibility mirror package	✓	
– Trimble Connected Community**			Signaling/warning horn	✓	
Cat Assist:	✓		Ground-level secondary engine shutoff switch	✓	
– Boom Assist			Boom lowering check valve		✓
– Bucket Assist			Stick lowering check valve		✓
– Swing Assist			Rearview camera	✓	
– Grade Assist			360° visibility		✓
– Lift Assist					
Cat Payload:	✓				
– Static weigh					
– Auto calibration					
– Payload/cycle information					
– USB reporting capability					
E-Fence:	✓				
– E-ceiling					
– E-floor					
– E-swing					
– E-wall					
– E-cab avoidance					
Auto hammer stop	✓				
Remote Services capability	✓				

**Subscription required.

Dealer Installed Kit and Attachments

Attachments may vary. Consult your Cat dealer for details.

CAB

- Radial lower wiper
- Polycarbonate roof hatch
- LH/RH electrical pedal for tool control

SAFETY AND SECURITY

- Bluetooth® key fob
- Dual exit rear window kit

GUARDS

- Rain protector plus cab light cover
- Falling object guard system (not compatible with cab light cover, rain protector)
- Mesh guard full front (not compatible with cab light cover, rain protector)
- Mesh guard lower half front
- Full protecting vandalism guard
- Rain protector for front windshield with cab light cover

349 Cab Options

Cab Options

	Comfort	Deluxe
ROPS, standard sound suppression	●	●
High-resolution 203 mm (8") LCD touchscreen monitor	●	●
High-resolution 203 mm (8") LCD touchscreen monitor + additional monitor (only for use with Cat GRADE with Advanced 2D or Cat GRADE with 3D)	○	○
High-resolution 254 mm (10") LCD touchscreen monitor (only for use with 360° visibility)	○	○
High-resolution 254 mm (10") LCD touchscreen monitor + additional monitor (only for use with 360° visibility and Cat GRADE with Advanced 2D or Cat GRADE with 3D)	○	○
Automatic bi-level air conditioner	●	●
Jog dial and shortcut keys for monitor control	●	●
Keyless push-to-start engine control	●	X
Height-adjustable console, three steps with tool	●	●
Height-adjustable console, infinite with no tool	X	●
Mechanically adjustable seat suspension	●	X
Air-adjustable seat suspension	X	●
51 mm (2") seat belt	●	●
Seat heater	X	●
Fixed left-side console	●	X
Tilt-up left-side console	X	●
Bluetooth integrated radio with USB ports	●	●
12V DC outlets (×2)	●	●
Document storage	●	●
Cup and bottle holders	●	●
Openable two-piece front window	●	●
Radial wiper with washer	●	●
Openable steel hatch	●	X
Openable polycarbonate skylight hatch	X	●
LED dome and lower interior lights	●	●
Roller front sunscreen	●	●
Roller rear sunscreen	○	○

- Standard
- Optional
- X Not available



For more complete information on Cat products, dealer services, and industry solutions, visit us on the web at www.cat.com

© 2020 Caterpillar
All rights reserved

Materials and specifications are subject to change without notice. Featured machines in photos may include additional equipment. See your Cat dealer for available options.

CAT, CATERPILLAR, LET'S DO THE WORK, their respective logos, "Caterpillar Corporate Yellow," the "Power Edge" and Cat "Modern Hex" trade dress as well as corporate and product identity used herein, are trademarks of Caterpillar and may not be used without permission.

AEXQ2525-01 (09-2020)
Replaces AEXQ2525
Build Number: 07C
(AME, CIS, S Am,
SE Asia, Turkey)

