



D5

Track-Type Tractor

Technical Specifications

Configurations and features may vary by region. Please consult your Cat® dealer for availability in your area.

Table of Contents

D5 Track-Type Tractor

Specifications	3	D5 SU	8
Engine	3	Blade	8
Air Conditioning System	3	D5 Fine Grading Arrangement	9
Fluid/Refill Capacities	3	Track Shoes	10
Transmission	3	Dimensions – Rear Attachments	11
Drawbar Pull	4	Ripper	11
Hydraulic Controls – Pressures	4	Winch	12
Hydraulic Controls – Pump	4	Standards	13
D5 VPAT	5	Advanced Cabin Filtration	13
Blades	5	Dozer Technology Features	14
D5 LGP VPAT	6	Standard and Optional Equipment	15
Blades	6	Environmental Declaration	18
D5 VPAT Fine Grading	7		
Blades	7		

(continued on next page)

D5 Track-Type Tractor Specifications

Table of Contents *(continued)*

D5 Track Type Tractor – Waste Handler

Key Features and Benefits	19
Specifications	20
Engine	20
Air Conditioning System	20
Fluid/Refill Capacities	20
Transmission	20
Drawbar Pull	21
Hydraulic Controls – Pressures	21
Hydraulic Controls – Pump	21
D5 Waste Handler – LGP VPAT	22
Blade	22
D5 Waste Handler – VPAT	23
Blade	23

D5 Waste Handler – SU	24
Blade	24
D5 Waste Handler Features	25
Track Shoes	26
Dimensions – Rear Attachments	26
Ripper	26
Winch	27
Standards	28
Advanced Cabin Filtration	28
Dozer Technology Features	29

Standard and Optional Equipment

30

D5 Track-Type Tractor – Heavy Duty/Forestry

Key Features and Benefits	33
Specifications	34
Engine	34
Air Conditioning System	34
Fluid/Refill Capacities	34
Transmission	34
Drawbar Pull	35
Hydraulic Controls – Pressures	35
Hydraulic Controls – Pump	35
D5 VPAT – Heavy Duty/Forestry	36
Blade	36

D5 LGP VPAT – Heavy Duty/Forestry	37
Blade	37
D5 SU – Heavy Duty/Forestry	38
Blade	38
D5 Heavy Duty/Forestry Features	39
Track Shoes	40
Dimensions – Rear Attachments	41
Ripper	41
Winch	42
Standards	43
Advanced Cabin Filtration	43
Dozer Technology Features	44

Standard and Optional Equipment

45

D5 Track-Type Tractor Specifications

Engine

Engine Model	Cat® C7.1	
Emissions	Brazil MAR-1 and UN ECE R96 Stage IIIA emission standards, equivalent to U.S. EPA Tier 3/EU Stage IIIA	
Power Train	Fully automatic 3-speed	
Net Power (1,770 rpm)		
ISO 9249/SAE J1349	127 kW	170 hp
ISO 9249 (DIN)	172 mhp	
Engine Power – Maximum (1,700 rpm)		
ISO 14396	147 kW	198 hp
ISO 14396 (DIN)	200 mhp	
Gross Power – Maximum (1,700 rpm)		
SAE J1995	150 kW	201 hp
Bore	105 mm	4.1 in
Stroke	135 mm	5.3 in
Displacement	7.1 L	433 in ³

- Net power advertised is the power available at the engine flywheel when the engine is equipped with a fan, air cleaner, clean emissions module and alternator.
- Advertised power is tested per the specified standard in effect at the time of manufacture.
- No derating required up to 3000 m (9,840 ft) altitude, beyond 3000 m (9,840 ft) automatic derating occurs.
- Cat engines are compatible with diesel fuel blended with the following lower-carbon intensity fuels up to:
 - ✓ 100% biodiesel FAME (fatty acid methyl ester)*
 - ✓ 100% renewable diesel, HVO (hydrotreated vegetable oil) and GTL (gas-to-liquid) fuels

Refer to guidelines for successful application. Please consult your Cat dealer or “Caterpillar Machine Fluids Recommendations” (SEBU6250) for details.

*For use of blends higher than 20% biodiesel, consult your Cat dealer.

Air Conditioning System

The air conditioning system on this machine contains the fluorinated greenhouse gas refrigerant R134a (Global Warming Potential = 1430). The system contains 1.36 kg of refrigerant which has a CO₂ equivalent of 1.946 metric tonnes.

Fluid/Refill Capacities

Fuel Tank	315 L	83.2 gal
Cooling System	41 L	10.8 gal
Engine Crankcase	18 L	4.8 gal
Power Train	160 L	42.3 gal
Roller Frames Standard/LGP (each)	18/27 L	4.8/7.1 gal
Final Drives (each)	8 L	2.1 gal
Hydraulic System	80 L	21.1 gal

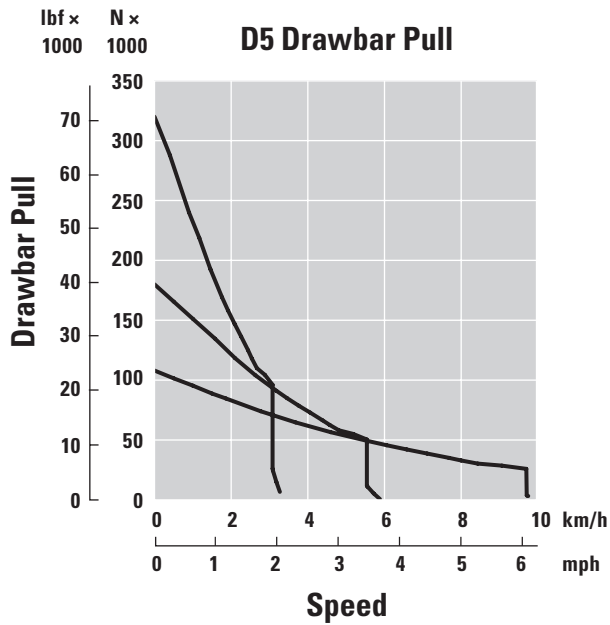
Transmission

0.5 Forward	2.5 km/h (2.4 km/h)	1.6 mph (1.5 mph)
1.0 Forward	3.3 km/h (3.0 km/h)	2.1 mph (1.9 mph)
1.5 Forward	4.4 km/h	2.7 mph
2.0 Forward	5.8 km/h	3.6 mph
2.5 Forward	7.5 km/h	4.7 mph
3.0 Forward	9.8 km/h	6.1 mph
0.5 Reverse	3.1 km/h (2.9 km/h)	1.9 mph (1.8 mph)
1.0 Reverse	4.1 km/h (3.5 km/h)	2.5 mph (2.2 mph)
1.5 Reverse	5.4 km/h	3.4 mph
2.0 Reverse	7.1 km/h	4.4 mph
2.5 Reverse	9.5 km/h	5.9 mph
3.0 Reverse	12.2 km/h	7.6 mph
Maximum Drawbar Pull		
1.0 Forward	320 kN	71,939 lbf
2.0 Forward	198 kN	44,512 lbf
3.0 Forward	113 kN	25,403 lbf

NOTE: Data between brackets are values for Brazil.

D5 Track-Type Tractor Specifications

Drawbar Pull



Hydraulic Controls – Pressures

Maximum Implement Operating Pressure	25 000 kPa	3,626 psi
Maximum Steering Operating Pressure	45 000 kPa	6,527 psi

Hydraulic Controls – Pump

Pump Output		
Implement	127 L/min	33.5 gal/min
Steering	165 L/min	43.5 gal/min
Fan	49 L/min	12.9 gal/min
Lift Cylinder Flow	127 L/min	33.5 gal/min
Tilt Cylinder Flow	127 L/min	33.5 gal/min
Ripper Cylinder Flow	127 L/min	33.5 gal/min
Angle Cylinder Flow – VPAT	127 L/min	33.5 gal/min

D5 Track-Type Tractor Specifications

D5 VPAT

Operating Weight*	17 080 kg	37,655 lb
Shipping Weight**	16 850 kg	37,148 lb
Ground Pressure (ISO 16754)	47.6 kPa	6.9 psi
Undercarriage (Standard)	40 Section/ 7 Bottom Rollers	
1 Track Gauge	1890 mm	74.4 in
2 Width of Track Shoe (Standard)	610 mm	24 in
3 Width of Tractor	2500 mm	98.4 in
4 Length of Track on Ground	2562 mm	100.9 in
Ground Contact Area (ISO 16754)	3.5 m ²	5,469 in ²
Grouser Height (Moderate Service)	57 mm	2.2 in
Ground Clearance	358 mm	14.1 in
5 Machine Height***	3085 mm	121.5 in
6 Length of Basic Tractor****	4644 mm	182.8 in

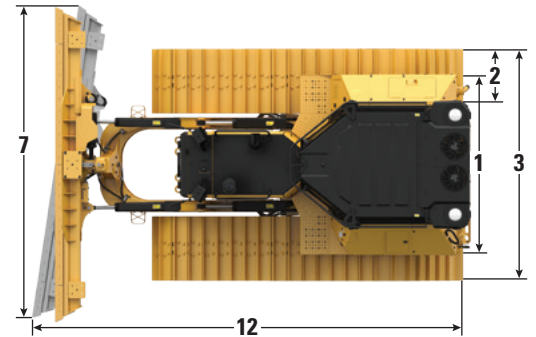
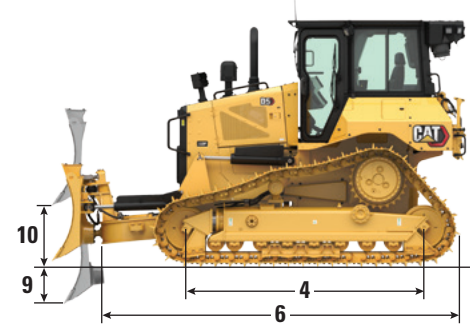
All dimensions above with Cat Abrasion™ undercarriage with Extreme Service shoes of maximum width for configuration, VPAT blade, and calculated per ISO 16754 unless otherwise specified.

*Operating weight includes blade, lubricants, coolant, full fuel tank, ROPS/FOPS cab, drawbar, and 75 kg (165 lb) operator.

**Shipping weight includes blade lift cylinders, C-frame, lubricants, coolant, 10% fuel, ROPS/FOPS cab, and drawbar.

***Machine height from tip of grouser to top of Product Link™ Antenna. For sweeps, add 64 mm (2.5 in) to overall machine height. For forestry sweeps, add 81 mm (3.2 in). With Extreme Service, add 9 mm (0.4 in). When Cat Grade with 3D antennas are installed there is no added machine height.

****Length of Basic Tractor from the back of the drawbar to front of C-frame.



LGP VPAT Model Shown

Blades

Configuration	VPAT		VPAT – Foldable	
Capacity (ISO 9246)	3.5 m ³	4.6 yd ³	3.5 m ³	4.6 yd ³
7 Width across End Bits	3272 mm	10.7 ft	3272 mm	10.7 ft
Width without End Bits	3159 mm	10.4 ft	3159 mm	10.4 ft
Width across End Bits (Blade Angled 24°)	2998 mm	118.0 in	2558 mm	100.7 in
Width without End Bits (Blade Angled 24°)	2908 mm	114.5 in	2539 mm	97.0 in
Maximum Blade Angle	24°		24°	
8 Height	1261 mm	49.6 in	1261 mm	49.6 in
9 Dig Depth	559 mm	22.0 in	559 mm	22.0 in
10 Lift Height	971 mm	38.2 in	971 mm	38.2 in
11 Maximum Tilt at Blade Corner	257 mm	10.1 in	257 mm	10.1 in
Maximum Tilt Angle	8.5°		8.5°	
Pitch Adjustment	60° (cutting edge/ground, nominal); -2°/+4°		60° (cutting edge/ground, nominal); -2°/+4°	
12 Length of Machine (Blade Straight)	5000 mm	197 in	5016 mm	197 in
Length of Machine (Blade Angled 24°, without fuel tank guard)	5621 mm	221 in	5621 mm	221 in
Blade Weight	1090 kg	2,403 lb	1286 kg	2,835 lb

D5 Track-Type Tractor Specifications

D5 LGP VPAT

Operating Weight*	19 070 kg	42,042 lb
Shipping Weight**	18 840 kg	41,535 lb
Ground Pressure (ISO 16754)	32.6 kPa	4.7 psi
Undercarriage (Standard)	46 Section/ 8 Bottom Rollers	
1 Track Gauge	2160 mm	85.0 in
2 Width of Track Shoe (Standard)	840 mm	33 in
3 Width of Tractor	3000 mm	118.1 in
4 Length of Track on Ground	3116 mm	122.7 in
Ground Contact Area (ISO 16754)	5.8 m ²	8,995 in ²
Grouser Height (Moderate Service)	57 mm	2.2 in
Ground Clearance	473 mm	18.6 in
5 Machine Height***	3200 mm	126.0 in
6 Length of Basic Tractor****	5012 mm	197.3 in

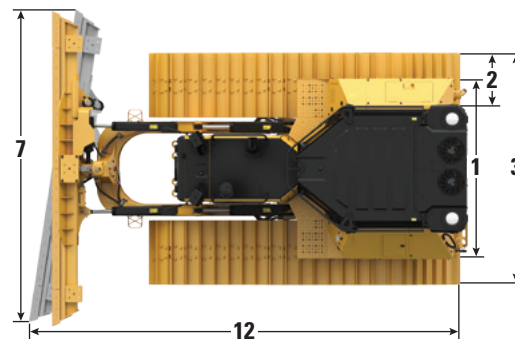
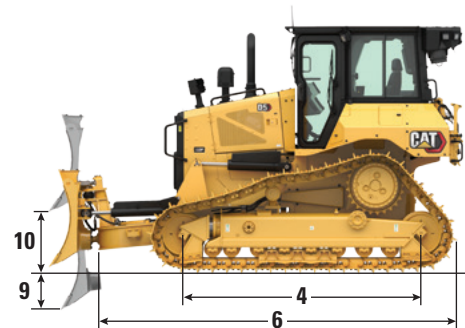
All dimensions above with Cat Abrasion undercarriage with Extreme Service shoes of maximum width for configuration, VPAT blade, and calculated per ISO 16754 unless otherwise specified.

*Operating weight includes blade, lubricants, coolant, full fuel tank, ROPS/FOPS cab, drawbar, and 75 kg (165 lb) operator.

**Shipping weight includes blade lift cylinders, C-frame, lubricants, coolant, 10% fuel, ROPS/FOPS cab, and drawbar.

***Machine height from tip of grouser to top of Product Link Antenna. For sweeps, add 64 mm (2.5 in) to overall machine height. For forestry sweeps, add 81 mm (3.2 in). With Extreme Service, add 9 mm (0.4 in). When Cat Grade with 3D antennas are installed there is no added machine height.

****Length of Basic Tractor from the back of the drawbar to front of C-frame.



Blades

Configuration	LGP VPAT		LGP VPAT – Foldable	
Capacity (ISO 9246)	4.0 m ³	5.2 yd ³	4.2 m ³	5.5 yd ³
7 Width across End Bits	4080 mm	13.4 ft	4080 mm	13.4 ft
Width without End Bits	3969 mm	156.3 in	3969 mm	156.3 in
Width across End Bits (Blade Angled 24°)	3736 mm	147.1 in	3736 mm	147.1 in
Width without End Bits (Blade Angled 24°)	3640 mm	143.3 in	3640 mm	143.3 in
Width across End Bits (Blade Angled 33° for transportation purpose only)	—	—	3000 mm	118.1 in
Maximum Blade Angle	24°		24°	
8 Height	1263 mm	49.7 in	1263 mm	49.7 in
9 Dig Depth	580 mm	22.8 in	580 mm	22.8 in
10 Lift Height	1051 mm	41.4 in	1051 mm	41.4 in
11 Maximum Tilt at Blade Corner	371 mm	14.6 in	371 mm	14.6 in
Maximum Tilt Angle	8.5°		8.5°	
Pitch Adjustment	60° (cutting edge/ground, nominal); -2°/+4°		60° (cutting edge/ground, nominal); -2°/+4°	
12 Length of Machine (Blade Straight)	5350 mm	211 in	5350 mm	211 in
Length of Machine (Blade Angled 24°, without fuel tank guard)	6137 mm	242 in	6027 mm	237 in
VPAT Blade foldable, angled 33° for transportation purpose only	—	—	6377 mm	251 in
Weight (Blade)	1256 kg	2,769 lb	1526 kg	3,364 lb

D5 Track-Type Tractor Specifications

D5 VPAT Fine Grading

Operating Weight*	17 680 kg	38,978 lb
Shipping Weight**	17 450 kg	38,471 lb
Ground Pressure (ISO 16754)	41.4 kPa	6.0 psi
Undercarriage (Standard)	46 Section/ 8 Bottom Rollers	
1 Track Gauge	1890 mm	74.4 in
2 Width of Track Shoe (Standard)	610 mm	24 in
3 Width of Tractor	2500 mm	98.4 in
4 Length of Track on Ground	3116 mm	122.7 in
Ground Contact Area (ISO 16754)	4.2 m ²	6,525 in ²
Grouser Height (Moderate Service)	57 mm	2.2 in
Ground Clearance	473 mm	18.6 in
5 Machine Height***	3200 mm	126.0 in
6 Length of Basic Tractor****	5012 mm	197.3 in

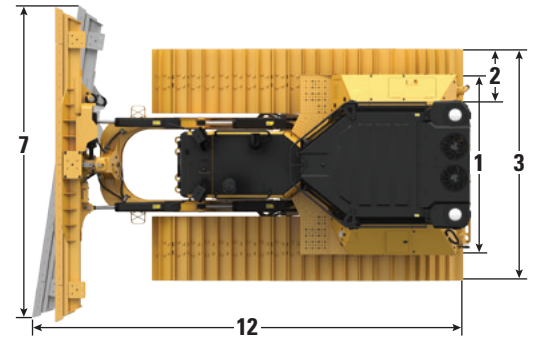
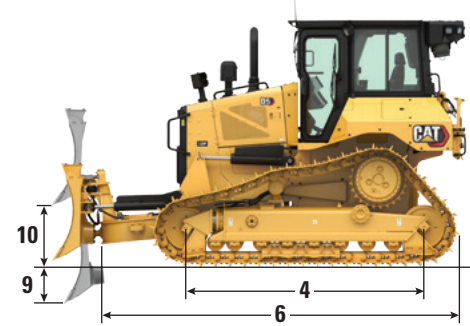
All dimensions above with Cat Abrasion undercarriage with Extreme Service shoes of maximum width for configuration, VPAT blade, and calculated per ISO 16754 unless otherwise specified.

*Operating weight includes blade, lubricants, coolant, full fuel tank, ROPS/FOPS cab, drawbar, and 75 kg (165 lb) operator.

**Shipping weight includes blade lift cylinders, C-frame, lubricants, coolant, 10% fuel, ROPS/FOPS cab, and drawbar.

***Machine height from tip of grouser to top of Product Link Antenna. For sweeps, add 64 mm (2.5 in) to overall machine height. For forestry sweeps, add 81 mm (3.2 in). With Extreme Service, add 9 mm (0.4 in). When Cat Grade with 3D antennas are installed there is no added machine height.

****Length of Basic Tractor from the back of the drawbar to front of C-frame.



LGP VPAT Model Shown

Blades

Configuration	VPAT		VPAT – Foldable	
Capacity (ISO 9246)	3.5 m ³	4.6 yd ³	3.5 m ³	4.6 yd ³
7 Width across End Bits	3272 mm	10.7 ft	3272 mm	10.7 ft
Width without End Bits	3159 mm	10.4 ft	3159 mm	10.4 ft
Width across End Bits (Blade Angled 24°)	2998 mm	118.0 in	2558 mm	100.7 in
Width without End Bits (Blade Angled 24°)	2908 mm	114.5 in	2539 mm	97.0 in
Maximum Blade Angle	24°		24°	
8 Height	1261 mm	49.6 in	1261 mm	49.6 in
9 Dig Depth	580 mm	22.8 in	580 mm	22.8 in
10 Lift Height	1051 mm	41.4 in	1051 mm	41.4 in
11 Maximum Tilt at Blade Corner	257 mm	10.1 in	257 mm	10.1 in
Maximum Tilt Angle	8.5°		8.5°	
Pitch Adjustment	60° (cutting edge/ground, nominal); -2°/+4°		60° (cutting edge/ground, nominal); -2°/+4°	
12 Length of Machine (Blade Straight)	5350 mm	211 in	5350 mm	211 in
Length of Machine (Blade Angled 24°, without fuel tank guard)	5969 mm	235 in	5969 mm	235 in
Weight (Blade)	1090 kg	2,403 lb	1286 kg	2,835 lb

D5 Track-Type Tractor Specifications

D5 SU

Operating Weight*	17 240 kg	38,008 lb
Shipping Weight**	17 010 kg	37,501 lb
Ground Pressure (ISO 16754)	48.2 kPa	7.0 psi
Undercarriage	40 Section/ 7 Bottom Rollers	
1 Track Gauge	1890 mm	74.4 in
2 Width of Track Shoe (Standard)	610 mm	24 in
3 Width of Tractor (without trunnions)	2500 mm	98.4 in
4 Length of Track on Ground	2562 mm	100.9 in
Ground Contact Area (ISO 16754)	3.5 m ²	5,469 in ²
Grouser Height (Moderate Service)	57 mm	2.5 in
Ground Clearance	358 mm	14.1 in
5 Machine Height***	3085 mm	121.5 in
6 Length of Basic Tractor****	3990 mm	157.1 in

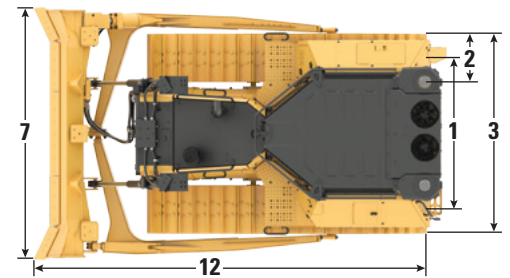
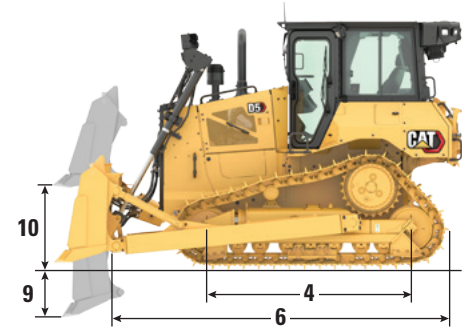
All dimensions above with Cat Abrasion undercarriage with Moderate Service shoes of maximum width for configuration, SU blade, and calculated per ISO 16754 unless otherwise specified.

*Operating weight includes blade, lubricants, coolant, full fuel tank, ROPS/FOPS cab, drawbar, and 75 kg (165 lb) operator.

**Shipping weight includes blade lift cylinders, C-frame, lubricants, coolant, 10% fuel, ROPS/FOPS cab, and drawbar.

***Machine height from tip of grouser to top of Product Link Antenna. For sweeps, add 64 mm (2.5 in) to overall machine height. For forestry sweeps, add 81 mm (3.2 in). With Extreme Service, add 9 mm (0.4 in). When Cat Grade with 3D antennas are installed there is no added machine height.

****Length of Basic Tractor from the back of the drawbar to the tip of lift cylinder.



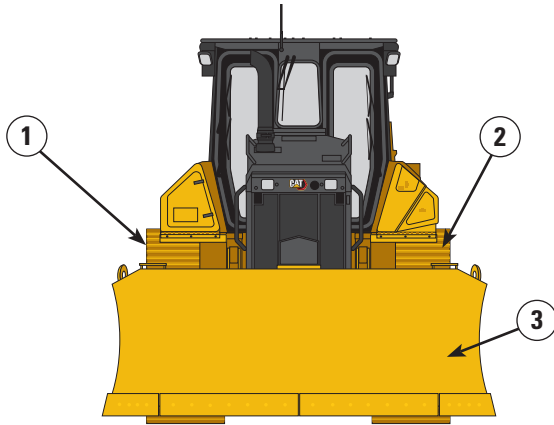
Blade

Configuration	SU	
Capacity (ISO 9246)	4.3 m ³	5.6 yd ³
7 Width across End Bits	3164 mm	10.4 ft
Width without End Bits	3122 mm	10.2 in
8 Height	1338 mm	52.7 in
9 Dig Depth	544 mm	21.4 in
10 Lift Height	1104 mm	43.4 in
11 Maximum Tilt at Blade Corner	140 mm	5.5 in
Maximum Tilt Angle	8°	
Pitch Adjustment	±5.1°	
12 Length of Machine with SU Blade (without fuel tank guard)	5087 mm	200 in
Blade Weight (blade + push arms installed)	2050 kg	4,520 lb

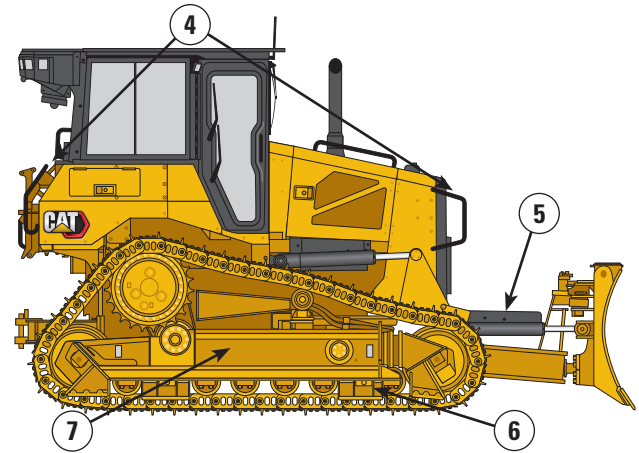
D5 Track-Type Tractor Specifications

D5 Fine Grading Arrangement

The Fine Grading arrangement combines the features of a standard VPAT dozer with the longer undercarriage of an LGP machine. The result is a narrow transport width, without giving up low ground pressure. Machine stability and maneuverability are optimal. A folding blade is available to make transport even easier. See page 7 for specifications and dimensions.



- 1) D5 VPAT Tractor – 1890 mm (74 in) gauge
- 2) Fine grading tracks – narrow shoes, 610 mm (24 in), 46 sections
- 3) 3272 mm (10.7 ft) VPAT blade or Foldable VPAT blade for shipping width under 3 m (9.85 ft)



- 4) LGP Access Package (front handles/rear ladder)
- 5) LGP bulldozer (long C-frame)
- 6) Fine grading undercarriage:
 - 1890 mm (74.4 in)
 - 8-roller track roller frame
- 7) LGP compatible track guiding guards

D5 Track-Type Tractor Specifications

Track Shoes

Some track shoes not available in all regions. Please consult your Cat dealer for details.

Standard			
560 mm (22 in)	Heavy Duty Extended Life (HDXL)	Moderate Service	
560 mm (22 in)	HDXL	Extreme Service	
560 mm (22 in)	Cat Abrasion™	Extreme Service	
600 mm (24 in)	HDXL	Moderate Service	
600 mm (24 in)	HDXL	Moderate Service	Fine Grading
600 mm (24 in)	HDXL	Extreme Service	
600 mm (24 in)	HDXL	Extreme Service	Center Hole
610 mm (24 in)	Cat Abrasion	Moderate Service	Fine Grading
610 mm (24 in)	Cat Abrasion	Extreme Service	
610 mm (24 in)	Cat Abrasion	Extreme Service	Center Hole
LGP			
840 mm (33 in)	HDXL	Extreme Service	
840 mm (33 in)	HDXL	Extreme Service	Center Hole
840 mm (33 in)	Cat Abrasion	Moderate Service	
840 mm (33 in)	Cat Abrasion	Extreme Service	
860 mm (34 in)	HDXL	Extreme Service	
860 mm (34 in)	HDXL	Self-Cleaning	
860 mm (34 in)	Cat Abrasion	Extreme Service	

D5 Track-Type Tractor Specifications

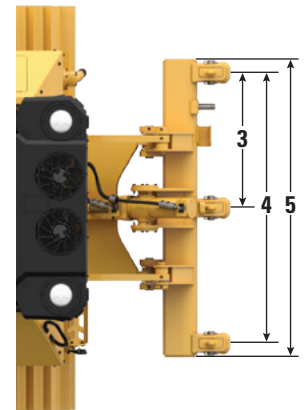
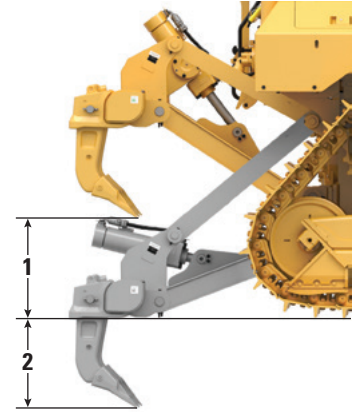
Dimensions – Rear Attachments

Add the following to the total length of the machine when these rear attachments are installed.

D5	Drawbar		Winch		Ripper		Striker Box	
Push Arm and VPAT Dozers	16 mm	0.6 in	446 mm	17.6 in	1060 mm	41.7 in	152 mm	6 in

Ripper

Type	Fixed Parallelogram	
Weight with Three Shanks	1393 kg	3,071 lb
1 Maximum Clearance, Raised (Shank Tip)		
D5 VPAT/Push Arms	404 mm	15.9 in
D5 LGP VPAT	518 mm	20.4 in
2 Maximum Penetration		
Standard	552 mm	21.7 in
LGP	437 mm	17.2 in
3 Pocket Spacing	1000 mm	3 ft 3.4 in
4 Shank Gauge	2 m	6 ft 7 in
Shank Section	73 mm × 176 mm	2.9 in × 6.9 in
Number of Pockets	3	
5 Overall Beam Width	2202 mm	86.7 in
Beam Cross Section	219 mm × 254 mm	8.6 in × 10.0 in
Maximum Penetration Force		
Standard	51.6 kN	11,600 lbf
LGP	43 kN	9,667 lbf
Maximum Pryout Force		
Standard	211.2 kN	47,480 lbf
LGP	170 kN	38,217 lbf



D5 Track-Type Tractor Specifications

Winch

Winch Model	PA55 Standard Speed	
Weight*	1277 kg	2,815 lb
Oil Capacity	73 L	19.3 gal
Winch and Bracket Length	1145 mm	45.1 in
Winch Case Width	975 mm	38.4 in
Drum Diameter	254 mm	10 in
Drum Width	315 mm	12.4 in
Flange Diameter	504 mm	19.8 in
Drum Capacity – 22 mm (0.88 in)	88 m	288 ft 9 in
Winch Drive	Mechanical	
Control	Electric	
Overall Width	975 mm	38.4 in
Rope Diameter (recommended)	19 mm	0.75 in
Cable Ferrule Size (O.D. × Length)	54 mm × 67 mm	2.1 in × 2.6 in
Maximum Bare Drum		
Line Pull	31 388 kg*	69,200 lb*
Line Speed	43 m/min	141 ft/min
Maximum Full Drum		
Line Pull	23 359 kg*	54,100 lb*
Line Speed	66 m/min	210 ft/min

Winch Model	PA55 Slow Speed	
Weight*	1277 kg	2,815 lb
Oil Capacity	73 L	19.3 gal
Winch and Bracket Length	1145 mm	45.1 in
Winch Case Width	975 mm	38.4 in
Drum Diameter	254 mm	10 in
Drum Width	315 mm	12.4 in
Flange Diameter	504 mm	19.8 in
Drum Capacity – 22 mm (0.88 in)	88 m	288 ft 9 in
Winch Drive	Mechanical	
Control	Electric	
Overall Width	975 mm	38.4 in
Rope Diameter (recommended)	19 mm	0.75 in
Cable Ferrule Size (O.D. × Length)	54 mm × 67 mm	2.1 in × 2.6 in
Maximum Bare Drum		
Line Pull	31 388 kg*	69,200 lb*
Line Speed	16 m/min	53 ft/min
Maximum Full Drum		
Line Pull	31 388 kg*	69,200 lb*
Line Speed	28 m/min	91 ft/min

*Weight: Includes pump, operator controls, oil, mounting brackets and spacers.

Slow and standard speed winches are available.

Standards

ROPS/FOPS/OPS

- ROPS (Rollover Protective Structure) offered by Caterpillar for the machine meets ROPS criteria ISO 3471:2008.
- FOPS (Falling Object Protective Structure) meets ISO 3449:2005 Level II.
- OPS (Operator Protective Structure) screens meets OPS criteria per ISO 8084:2003 and WCB G604:2011.

Brakes

- Brakes meet the standard ISO 10265:2008.

Sound Level Information

Hearing protection may be needed when the machine is operated with an open operator station, in a noisy environment, with a cab that is not properly maintained, or when the doors and windows are open for extended periods of time.

Sound Level		Test Method
Operator Sound Pressure Level	76 dB(A)	“ISO 6396:2008” ⁽¹⁾
Exterior Sound Power Level	111 dB(A)	“ISO 6395:2008” ⁽²⁾

⁽¹⁾The measurement was conducted at 70% of the maximum engine cooling fan speed. The sound level may vary at different engine cooling fan speeds. The measurement was conducted with the cab doors and the cab windows closed. The cab was properly installed and maintained.

⁽²⁾The measurement was conducted at 70% of the maximum engine cooling fan speed. The sound level may vary at different engine cooling fan speeds.

The sound levels listed above include both measurement uncertainty and uncertainty due to production variation.

Vibration Levels

Maximum Hand/Arm*	
ISO 5349:2001	2.5 m/s ²
Maximum Whole Body*	
ISO/TR25398:2006	0.5 m/s ²
Seat Transmissibility Factor	
ISO 7096:2020 – spectral class EM6	<0.7

- Values are for an experienced operator in a dozing application, consult the Operating and Maintenance Manual for further details.

Advanced Cabin Filtration

Operator Cabin

- Distributed HVAC ducting with automatic temperature control and blower speed provides ultimate operator comfort with less user input.
- Reduced maintenance of the condenser core with automatic reversing fans.
- Cat Advanced Cabin Filtration is standard.

Cat Advanced Cabin Filtration

- Operator protection from respirable particulate (0.3-10-micron size).
- Sustainably pressurized cab (U.S. Silica compliant).
- Reduced maintenance with longer life, high efficiency filters.
- Protection for all cabin components: electronics, etc.
- Helps meet U.S. Occupational Safety and Health Administration Silica Rule Table 1 requirements for operator cabs.
- Multi-tiered filter offerings for optional efficiency upgrades. Contact Cat dealer for availability.
 - MERV 16 – Standard Equipment
 - HEPA
 - Activated Carbon + HEPA
 - ABEK1 + HEPA

D5 Track-Type Tractor Specifications

Dozer Technology Features

Assist technology features to help operators of varied experience levels get the job done faster and more accurately. Grade and Command offerings help further enhance your productivity, efficiency and job site safety.

Premium, Heavy Duty and High Debris cabs are Third Party Grade Control Ready, equipped with CAN interface, harness pass throughs and mounting features to make it easier to install the grade control system of your choice.

ARO with Assist Package

Attachment Ready Option (ARO)	ARO provides wiring and mounting provisions for dealer installation of Grade with 3D, AccuGrade, UTS, or other grade control systems.
Cat Grade with Slope Assist™	Slope Assist automatically maintains pre-established blade position without a GNSS/GPS signal – no additional hardware or software needed. For machines with 3D, operators can easily switch back and forth from full 3D automatics to Slope Assist.
Steer Assist	Steer Assist automates track and blade tilt steering. Helps reduce operator fatigue by automatically maintaining straight travel with light loads or heavy loads on flat ground and cross slopes. No GNSS/GPS required.
Stable Blade	Stable Blade works seamlessly with operator inputs to help produce a smoother surface when operating manually.
Slope Indicate	Slope Indicate is included in the main machine display and shows side slope and uphill/downhill grades to help operators with slope work.
Blade Load Monitor	Blade Load Monitor gives you real-time feedback on current load versus the optimal blade load based on your ground conditions. Actively monitors machine load and track slip to help you reach optimal pushing capacity. ¹
Traction Control	Traction Control automatically reduces track slip to save you time, fuel and track wear. ¹
AutoCarry™	AutoCarry automates blade lift to help you maintain consistent blade load and help reduce track slip. ¹

Grade 3D with Assist Package

Includes all features from the ARO with Assist Package listed above, plus:

Cat Grade with 3D	Factory integrated Cat Grade with 3D uses GNSS/GPS to control the blade so you can get to design plan faster. Low profile antennas are integrated into the cab roof and GNSS/GPS receivers are mounted inside the cab for better protection. ²
Steer Assist 3D	Automatically follow guidance lines from site design plans (or Infield designs) under light load or heavy load. ²
Dedicated Touchscreen Grade Display	Full-color Grade operator interface is intuitive and easier to use. The 254 mm (10 in) touchscreen uses an Android OS platform and operates like a smart phone.

Remote Control/Cat Command

Remote Control Ready Cab (Optional)	Cab is Remote Control Ready from the factory with external connector for dealer installation of the Cat Command remote control system.
Command for Dozing ² (Optional)	Cat Command remote control technology provides full dozer maneuverability from a safe distance when working in hazardous environments. Command offers the choice of line-of-sight consoles or long-distance operator stations (non-line-of-sight).

¹Feature not operational indoors or in areas where a GPS signal is not available.

²Requires Software Enabled Attachment (SEA) installation when not configured from the factory.

Note: Grade and Assist technologies, except Slope Indicate, Blade Load Monitor and Traction Control, are not compatible with Angle blades or specialty blades from Cat Work Tools. Please consult with your Cat dealer for details.

Standard and Optional Equipment

Standard and optional equipment may vary. Consult your Cat dealer for details.

	Standard	Optional		Standard	Optional
POWER TRAIN			CAT TECHNOLOGY		
Cat® C7.1 diesel engine	✓		Slope Indicate	✓	
Fully-automatic 3-speed transmission:	✓		ARO with Assist Package		✓
– Automatic directional and downshift			– ARO		
– Controlled throttle, load compensated			– Slope Assist		
– Infinite ground speed adjustment			– Steer Assist		
– Programmable/selectable bi-directional shifting			– Stable Blade		
Air-to-air aftercooler (ATAAC)	✓		– Blade Load Monitor		
Aluminum bar plate radiator	✓		– Traction Control		
Automatic glowplugs	✓		– AutoCarry		
Differential steering	✓		Grade 3D with Assist Package		✓
Engine air precleaner	✓		– Full-color 10-inch (254 mm) touchscreen grade display		
Engine air precleaner with turbine/screen		✓	– Steer Assist 3D		
Engine idle shutdown		✓	– Grade receivers and antennas		
Enhanced Power Train Control:	✓		– Grade Software Enabled Attachment (SEA)		
– Hill Decent Control			– ARO with Assist package features		
– Hill Hold			Compatibility with radios and base stations from Trimble, Topcon, and Leica	✓	
– Decel Brake Pedal			Capability to install 3D grade systems from Trimble, Topcon, and Leica	✓	
– Steering Radius Control			Product Link, Cellular	✓	
Extended life coolant	✓		Product Link – Dual Cellular/Satellite		✓
Ether starting aid		✓	Remote Flash/Troubleshoot	✓	
Final Drives – Standard or LGP	✓		Grade Connectivity		✓
Final Drives – Arctic, Waste		✓	Operator ID		✓
Fuel priming pump	✓		Machine Security – Passcode	✓	
Fuel water separator	✓		Machine Security – Bluetooth		✓
Fuel line heater		✓	Remote Control Ready cab		✓
Hydraulic demand fan	✓		Cat Command for Dozing		✓
Hydraulic reversing fan		✓			
Sound suppression (Brazil only)		✓			
Trash Resistant Radiator Cores		✓			

(continued on next page)

D5 Standard and Optional Equipment

Standard and Optional Equipment (continued)

Standard and optional equipment may vary. Consult your Cat dealer for details.

	Standard	Optional		Standard	Optional
OPERATOR ENVIRONMENT			UNDERCARRIAGE		
Standard cab with Integrated ROPS and FOPS, laminated safety glass, sliding windows, basic display/non-ARO, standard seat	✓		Standard or Low Ground Pressure (LGP) undercarriage	✓	
Premium cab with integrated ROPS and FOPS, laminated safety glass, sliding windows, adjustable armrests. Cab is technology- and remote control-ready.		✓	Heavy Duty (HDXL with DuraLink™ or Cat Abrasion™ undercarriage	✓	
High Debris/Waste cab with integrated ROPS and FOPS, impact resistant polycarbonate doors, solid side windows. Cab is technology- and remote control-ready.		✓	Fine grading undercarriage		✓
Heavy Duty/Forestry cab with integrated ROPS and FOPS, impact resistant polycarbonate doors, sliding side windows. Cab is technology- and remote control-ready.		✓	Waste undercarriage		✓
8-inch (203 mm) gauge cluster display	✓		Carrier rollers	✓	
Full-color 10-inch (254 mm) liquid crystal touchscreen display		✓	Hydraulic track adjusters	✓	
Integrated rearview camera		✓	Lifetime lubricated track and rollers	✓	
In-display key machine features		✓	Moderate service track shoes (see chart on page 10)	✓	
Application Profile		✓	Extreme service track shoes (see chart on page 10)		✓
Operator ID/Operator ID with Security		✓	Redesigned track roller frame	✓	
Premium cab with adjustable armrests		✓	Track roller frame guiding guards: center, partial or full (NOTE: center guiding guards standard on LGP machine)		✓
Cloth seat	✓		BULLDOZERS		
Deluxe leather heated/ventilated seat		✓	VPAT dozer package		✓
Electrohydraulic implement and steering controls	✓		SU dozer package		✓
Joystick control	✓		BLADES		
Joystick control – ARO		✓	VPAT		✓
Fresh air filter	✓		Semi-Universal		✓
Powered fresh air filter precleaner		✓	Foldable VPAT		✓
Cab mounted modular Heating/Ventilation/Air Conditioning (HVAC) system	✓		Waste/Landfill		✓
Rearview mirror	✓		HYDRAULICS		
Retractable 76 mm (3 in) seatbelt	✓		Load sensing hydraulics	✓	
Grab rails/tie offs on both sides of cab roof	✓		Independent steering and implement pumps	✓	
Communication radio ready		✓	<i>(continued on next page)</i>		
Radio, AM/FM/Aux/USB/Bluetooth®		✓			
Added storage areas	✓				
Cup holders	✓				
Dash foot pads	✓				
Glove box		✓			
Lunchbox storage	✓				
Wipers	✓				

Standard and Optional Equipment *(continued)*

Standard and optional equipment may vary. Consult your Cat dealer for details.

	Standard	Optional		Standard	Optional
ELECTRICAL			BATTERIES, STARTERS, ALTERNATORS AND COOLANT		
Lights – 4 LED	✓		95 Amp alternator	✓	
Lights – 6 LED		✓	24 Volt starter	✓	
Premium lights – 12 LED		✓	Arctic engine coolant, –51° C (–60° F)		✓
Backup alarm	✓		Engine coolant, –37° C (–35° F)	✓	
Beacon warning light		✓	Cold Weather package: heavy duty battery, heavy duty starter, ether starting aid, jacket water heater		✓
Converter: one 15 Amp, 12V outlet	✓		Two maintenance free 12-volt batteries (950 cca) (24-volt system)	✓	
Forward warning horn	✓		ATTACHMENTS		
SERVICE AND MAINTENANCE			Ripper-ready rear hydraulics		✓
30-minute cab removal		✓	Dual ripper/winch control		✓
Adjustable pitch link (VPAT)	✓		Ripper with straight or curved shanks		✓
Centralized, remote mounted pressure taps	✓		Winch:		✓
Ecology drains	✓		– PACCAR PA55, low speed PTO		
Extended service intervals (500 hours engine, 1,000 hours power train)	✓		– PACCAR PA55, standard speed PTO		
Fast fuel fill		✓	– Fairlead Assembly; 3-roller, fits PA55 winches		
Ground level service center (remote electrical disconnect, secondary shutdown switch, optional hour meter)	✓		– Retrofit kit (4th roller); fits PA55 winches		
High-speed oil change		✓	Drawbar		✓
Heavy duty perforated radiator doors, louvered and hinged	✓		Heavy Duty/Forestry, High Debris/Waste special arrangements		✓
Quick Access cab floor		✓	Open sweeps package		✓
Rear access ladder	✓		Rear striker box with striker bar		✓
Rear work light		✓	GUARDING AND SCREENS		
Removable engine enclosures, perforated and hinged	✓		Bottom guards – standard or heavy duty		✓
S-O-S SM sampling ports	✓		Fuel tank guards		✓
Shovel holder	✓		Grab handles	✓	
Under hood work light		✓	Guards for premium lights, front and side		✓
			Side and rear screens		✓

D5 Environmental Declaration

The following information applies to the machine at the time of final manufacture as configured for sale in the regions covered in this document. The content of this declaration is valid as of the date issued; however, content related to machine features and specifications are subject to change without notice. For additional information, please see the machine's Operation and Maintenance Manual.

For more information on sustainability in action and our progress, please visit <https://www.caterpillar.com/en/company/sustainability>.

Engine

- The Cat® C7.1 engine meets Brazil MAR-1 and UN ECE R96 Stage IIIA emission standards, equivalent to U.S. EPA Tier 3/ EU Stage IIIA.
- Cat engines are compatible with diesel fuel blended with the following lower-carbon intensity fuels up to:
 - ✓ 100% biodiesel FAME (fatty acid methyl ester)*
 - ✓ 100% renewable diesel, HVO (hydrotreated vegetable oil) and GTL (gas-to-liquid) fuels
 Refer to guidelines for successful application. Please consult your Cat dealer or “Caterpillar Machine Fluids Recommendations” (SEBU6250) for details.
**For use of blends higher than 20% biodiesel, consult your Cat dealer.*

Air Conditioning System

- The air conditioning system on this machine contains the fluorinated greenhouse gas refrigerant R134a (Global Warming Potential = 1430). The system contains 1.36 kg (3.0 lb) of refrigerant which has a CO₂ equivalent of 1.946 metric tonnes (2.145 tons).

Paint

- Based on best available knowledge, the maximum allowable concentration, measured in parts per million (PPM), of the following heavy metals in paint are:
 - Barium < 0.01%
 - Cadmium < 0.01%
 - Chromium < 0.01%
 - Lead < 0.01%

Sound Performance

Operator Sound Pressure Level (ISO 6396:2008) – 74 dB(A)

Exterior Sound Power Level (ISO 6395:1988) – 111 dB(A)

Oils and Fluids

- Caterpillar factory fills with ethylene glycol coolants. Cat Diesel Engine Antifreeze/Coolant (DEAC) and Cat Extended Life Coolant (ELC) can be recycled. Consult your Cat dealer for more information.
- Cat Bio HYDO™ Advanced is an EU Ecolabel approved biodegradable hydraulic oil.
- Additional fluids are likely to be present, please consult the Operations and Maintenance Manual or the Application and Installation guide for complete fluid recommendations and maintenance intervals.

Features and Technology

- The following features and technology may contribute to fuel savings and/or carbon reduction. Features may vary. Consult your Cat dealer for details.
 - Fully automatic 3-speed transmission – just set your desired ground speed and the dozer adjusts for maximum fuel efficiency and power to the ground
 - Cut maintenance costs up to 10% with extended maintenance intervals
 - Assist technology features help operators work faster and more accurately to save time, materials and fuel
 - Boost productivity up to 50% with Cat technologies like Cat Grade with Slope Assist and Cat Grade with 3D
 - Remote Flash and Remote Troubleshoot

Recycling

- The materials included in machines are categorized as below with approximate weight percentage. Because of variations of product configurations, the following values in the table may vary.

Material Type	Weight Percentage
Steel	78.81%
Iron	7.69%
Nonferrous Metal	3.39%
Mixed Metal	0.19%
Mixed-Metal and Nonmetal	2.14%
Plastic	0.63%
Rubber	0.64%
Mixed Nonmetallic	0.06%
Fluid	0.43%
Other	0.90%
Uncategorized	5.12%
Total	100%

- A machine with higher recyclability rate will ensure more efficient usage of valuable natural resources and enhance End-of-Life value of the product. According to ISO 16714 (Earthmoving machinery – Recyclability and recoverability – Terminology and calculation method), recyclability rate is defined as percentage by mass (mass fraction in percent) of the new machine potentially able to be recycled, reused, or both.

All parts in the bill of material are first evaluated by component type based on a list of components defined by the ISO 16714 and Japan CEMA (Construction Equipment Manufacturers Association) standards. Remaining parts are further evaluated for recyclability based on material type.

Because of variations of product configurations, the following value in the table may vary.

Recyclability – 97%



D5

Waste Handler

Waste Handling package provides added features to help protect the machine and operator in harsh waste applications. Specialized guarding, striker bars and seals help protect the machine from impact, wrapping and airborne debris.

Next Generation Performance

- Harness more weight and horsepower than D6N to take on a wide range of waste handling tasks.
- Fully automatic 3-speed transmission gives you seamless acceleration, faster cycle times and more nimble movement around the site.
- No need to shift – just set your desired ground speed and the dozer adjusts for maximum fuel efficiency and power to the ground.
- Completely redesigned, more spacious cab for a whole new standard in comfort and productivity.
- More glass area, steeper hood angle provide 30 percent better forward visibility than the previous model.

Added Machine Protection

- High debris cab with impact resistant polycarbonate doors and solid side windows for improved pressurization.
- Powered air precleaner helps keep cab air cleaner and pressurized for greater operator comfort. A variety of optional filters are available from Cat Parts to customize filtration for the environment.
- Fuel tank/fuel tank cover guard and heavy duty bottom guards shield major machine components.
- Internal sealing keeps the trash away from the inner compartments.
- Rear striker bar helps protect against trash climbing up the tracks.
- Guarded final drives give added protection against wrapping and impact.
- 12 premium guarded LED lights illuminate the work area.

Ease of Maintenance

- Automatic reversing fan for easy cleanout access.
- Trash resistant radiator, with 6.4 fins per inch, helps reduce plugging.
- Quick access cab floor option offers tool-less access to the floor plate opening.
- Optional engine air cleaner with turbine/screen delivers cleaner air to the power train.

Equipped for the Job

- Landfill blades are equipped with a trash rack to increase productive capacity when machine works in lighter material like waste.
- Heavy Duty Extended Life (HDXL) undercarriage includes Kevlar® guarded, sealed idlers to help prevent debris such as wire, string or plastic bags from wrapping into seals.
- Center-hole track helps eject debris.

D5 Waste Handler Specifications

Engine

Engine Model	Cat C7.1	
Emissions	Brazil MAR-1 and UN ECE R96 Stage IIIA emission standards, equivalent to U.S. EPA Tier 3/EU Stage IIIA	
Power Train	Fully automatic 3-speed	
Net Power (1,770 rpm)		
ISO 9249/SAE J1349	127 kW	170 hp
ISO 9249 (DIN)	172 mhp	
Engine Power – Maximum (1,700 rpm)		
ISO 14396	147 kW	198 hp
ISO 14396 (DIN)	200 mhp	
Gross Power – Maximum (1,700 rpm)		
SAE J1995	150 kW	201 hp
Bore	105 mm	4.1 in
Stroke	135 mm	5.3 in
Displacement	7.1 L	433 in ³

- Net power advertised is the power available at the engine flywheel when the engine is equipped with a fan, air cleaner, clean emissions module and alternator.
- Advertised power is tested per the specified standard in effect at the time of manufacture.
- No derating required up to 3000 m (9,840 ft) altitude, beyond 3000 m (9,840 ft) automatic derating occurs.
- Cat engines are compatible with diesel fuel blended with the following lower-carbon intensity fuels up to:
 - ✓ 100% biodiesel FAME (fatty acid methyl ester)*
 - ✓ 100% renewable diesel, HVO (hydrotreated vegetable oil) and GTL (gas-to-liquid) fuels

Refer to guidelines for successful application. Please consult your Cat dealer or “Caterpillar Machine Fluids Recommendations” (SEBU6250) for details.

**For use of blends higher than 20% biodiesel, consult your Cat dealer.*

Air Conditioning System

The air conditioning system on this machine contains the fluorinated greenhouse gas refrigerant R134a (Global Warming Potential = 1430). The system contains 1.36 kg of refrigerant which has a CO₂ equivalent of 1.946 metric tonnes.

Fluid/Refill Capacities

Fuel Tank	315 L	83.2 gal
Cooling System	41 L	10.8 gal
Engine Crankcase	18 L	4.8 gal
Power Train	160 L	42.3 gal
Roller Frames Standard/LGP (each)	18/27 L	4.8/7.1 gal
Final Drives (each)	8 L	2.1 gal
Hydraulic System	80 L	21.1 gal

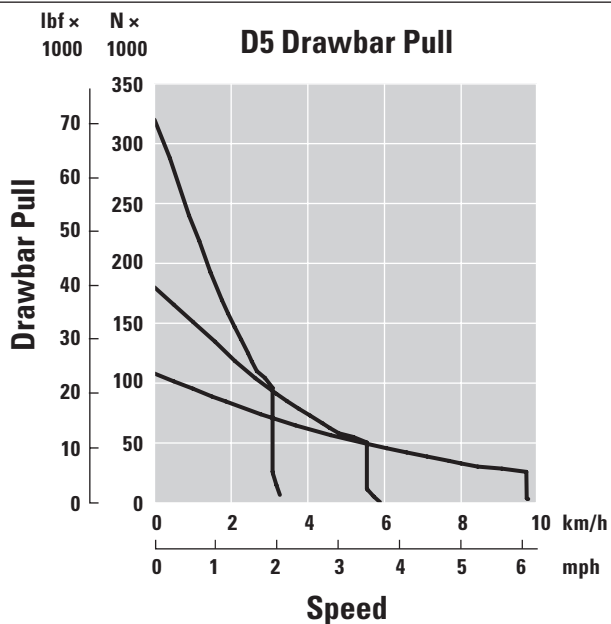
Transmission

0.5 Forward	2.5 km/h (2.4 km/h)	1.6 mph (1.5 mph)
1.0 Forward	3.3 km/h (3.0 km/h)	2.1 mph (1.9 mph)
1.5 Forward	4.4 km/h	2.7 mph
2.0 Forward	5.8 km/h	3.6 mph
2.5 Forward	7.5 km/h	4.7 mph
3.0 Forward	9.8 km/h	6.1 mph
0.5 Reverse	3.1 km/h (2.9 km/h)	1.9 mph (1.8 mph)
1.0 Reverse	4.1 km/h (3.5 km/h)	2.5 mph (2.2 mph)
1.5 Reverse	5.4 km/h	3.4 mph
2.0 Reverse	7.1 km/h	4.4 mph
2.5 Reverse	9.5 km/h	5.9 mph
3.0 Reverse	12.2 km/h	7.6 mph
Maximum Drawbar Pull		
1.0 Forward	320 kN	71,939 lbf
2.0 Forward	198 kN	44,512 lbf
3.0 Forward	113 kN	25,403 lbf

NOTE: Data between brackets are values for Brazil.

D5 Waste Handler Specifications

Drawbar Pull



Hydraulic Controls – Pressures

Maximum Implement Operating Pressure	25 000 kPa	3,626 psi
Maximum Steering Operating Pressure	45 000 kPa	6,527 psi

Hydraulic Controls – Pump

Pump Output		
Implement	127 L/min	33.5 gal/min
Steering	165 L/min	43.5 gal/min
Fan	49 L/min	12.9 gal/min
Lift Cylinder Flow	127 L/min	33.5 gal/min
Tilt Cylinder Flow	127 L/min	33.5 gal/min
Ripper Cylinder Flow	127 L/min	33.5 gal/min
Angle Cylinder Flow – VPAT	127 L/min	33.5 gal/min

D5 Waste Handler Specifications

D5 Waste Handler – LGP VPAT

Operating Weight*	20 580 kg	45,379 lb
Shipping Weight**	20 350 kg	44,872 lb
Ground Pressure (ISO 16754)	35.2 kPa	5.1 psi
Undercarriage (Standard)	46 Section/ 8 Bottom Rollers	
1 Track Gauge	2160 mm	85.0 in
2 Width of Track Shoe (Standard)	840 mm	33 in
3 Width of Tractor	3000 mm	118.1 in
4 Length of Track on Ground	3116 mm	122.7 in
Ground Contact Area (ISO 16754)	5.8 m ²	8,995 in ²
Grouser Height (Extreme Service)	66 mm	2.6 in
Ground Clearance	473 mm	18.6 in
5 Machine Height***	3200 mm	126.0 in
6 Length of Basic Tractor****	5130 mm	202.0 in

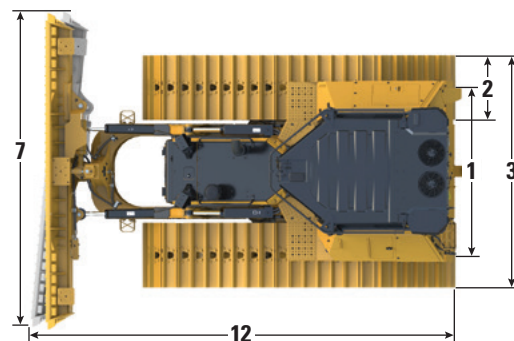
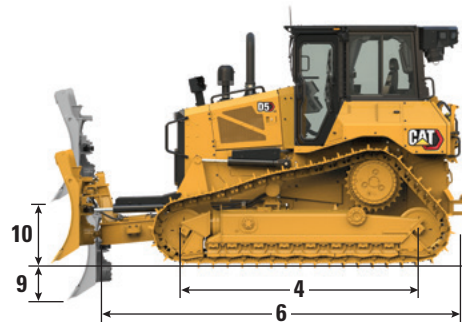
All dimensions above with Cat HDXL undercarriage with Extreme Service shoes of maximum width for configuration, VPAT Landfill blade, and calculated per ISO 16754 unless otherwise specified.

*Operating weight includes full Waste Handler package with landfill blade, lubricants, coolant, full fuel tank, ROPS/FOPS waste cab, cab air pressurizer, rear striker bar/box, waste undercarriage, guarded final drives, center hole track and 75 kg (165 lb) operator.

**Shipping weight includes full Waste Handler package, with landfill blade (aside), blade lift cylinders, C-frame, lubricants, coolant, 10% fuel, ROPS/FOPS waste cab, cab air pressurizer, rear striker bar/box, waste undercarriage, guarded final drives, center hole track.

***Machine height from tip of grouser to top of Product Link Antenna. When Cat Grade with 3D antennas are installed there is no added machine height.

****Length of Basic Tractor from the back of the rear striker box to the tip of the C-Frame.



Blade

Configuration	LGP VPAT Landfill	
Capacity (ISO 9246 – including trash rack on moldboard)	6.3 m ³	8.2 yd ³
7 Width across End Bits	4080 mm	13.4 ft
Width without End Bits	3969 mm	156.3 in
Width across End Bits (Blade Angled 24°)	3736 mm	147.1 in
Width without End Bits (Blade Angled 24°)	3640 mm	143.3 in
Maximum Blade Angle	24°	
8 Height	1473 mm	58 in
9 Dig Depth	580 mm	22.8 in
10 Lift Height	1051 mm	41.4 in
11 Maximum Tilt at Blade Corner	371 mm	14.6 in
12 Maximum Tilt Angle	8.5°	
Pitch Adjustment	60° (cutting edge/ground, nominal); -2°/+4°	
Length of Machine (Blade Straight)	5518 mm	217 in
Length of Machine (Blade Angled 24°)	6524 mm	248 in
Weight (Blade)	1370 kg	3,020 lb

D5 Waste Handler Specifications

D5 Waste Handler – VPAT

Operating Weight*	18 550 kg	40,903 lb
Shipping Weight**	18 320 kg	40,396 lb
Ground Pressure (ISO 16754)	51.7 kPa	7.5 psi
Undercarriage (Standard)	40 Section/ 7 Bottom Rollers	
1 Track Gauge	1890 mm	74.4 in
2 Width of Track Shoe (Standard)	610 mm	24 in
3 Width of Tractor	2500 mm	98.4 in
4 Length of Track on Ground	2562 mm	100.9 in
Ground Contact Area (ISO 16754)	3.5 m ²	5,469 in ²
Grouser Height (Extreme Service)	66 mm	2.6 in
Ground Clearance	358 mm	14.1 in
5 Machine Height***	3085 mm	121.5 in
6 Length of Basic Tractor****	4761 mm	187.4 in

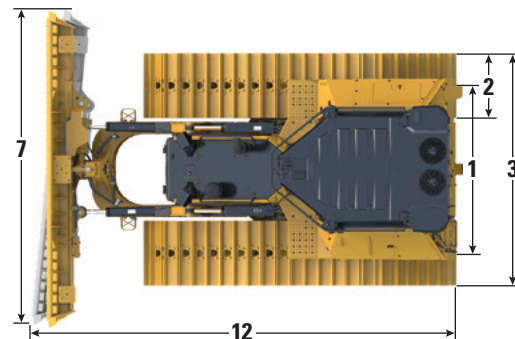
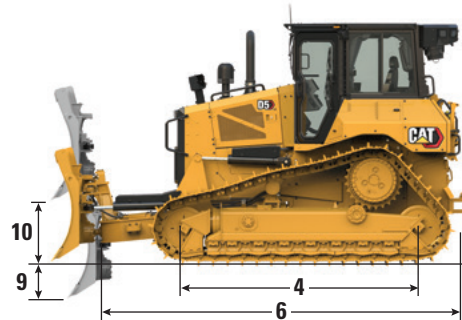
All dimensions above with Cat HDXL undercarriage with Extreme Service shoes of maximum width for configuration, VPAT Landfill blade, and calculated per ISO 16754 unless otherwise specified.

*Operating weight includes full Waste Handler package, with landfill blade, lubricants, coolant, full fuel tank, ROPS/FOPS waste cab, cab air pressurizer, rear striker bar/box, waste undercarriage, guarded final drives, center hole track and 75 kg (165 lb) operator.

**Shipping weight includes full Waste Handler package, with landfill blade (aside), blade lift cylinders, C-frame, lubricants, coolant, 10% fuel, ROPS/FOPS waste cab, cab air pressurizer, rear striker bar/box, waste undercarriage, guarded final drives, center hole track.

***Machine height from tip of grouser to top of Product Link Antenna. When Cat Grade with 3D antennas are installed there is no added machine height.

****Length of Basic Tractor from the back of the rear striker box to the tip of the C-Frame.



LGP VPAT Configuration Shown

Blade

Configuration	VPAT Landfill	
Capacity (ISO 9246 – including trash rack on moldboard)	6.8 m ³	8.9 yd ³
7 Width across End Bits	3272 mm	10.7 ft
Width without End Bits	3159 mm	10.4 ft
Width across End Bits (Blade Angled 24°)	2998 mm	118.0 in
Width without End Bits (Blade Angled 24°)	2908 mm	114.5 in
Maximum Blade Angle	24°	
8 Height	1687 mm	66.4 in
9 Dig Depth	559 mm	22.0 in
10 Lift Height	971 mm	38.2 in
11 Maximum Tilt at Blade Corner	257 mm	10.1 in
12 Maximum Tilt Angle	8.5°	
Pitch Adjustment	60° (cutting edge/ground, nominal); -2°/+4°	
Length of Machine (Blade Straight)	5153 mm	203 in
Length of Machine (Blade Angled 24°)	5842 mm	230 in
Blade Weight	1265 kg	2,889 lb

D5 Waste Handler Specifications

D5 Waste Handler – SU

Operating Weight*	18 760 kg	41,366 lb
Shipping Weight**	18 530 kg	40,859 lb
Ground Pressure (ISO 16754)	52.4 kPa	7.6 psi
Undercarriage	40 Section/ 7 Bottom Rollers	
1 Track Gauge	1890 mm	74.4 in
2 Width of Track Shoe (Standard)	610 mm	24 in
3 Width of Tractor (without trunnions)	2500 mm	98.4 in
4 Length of Track on Ground	2562 mm	100.9 in
Ground Contact Area (ISO 16754)	3.5 m ²	5,469 in ²
Grouser Height (Extreme Service)	66 mm	2.6 in
Ground Clearance	358 mm	14.1 in
5 Machine Height***	3085 mm	121.5 in
6 Length of Basic Tractor****	4108 mm	161.7 in

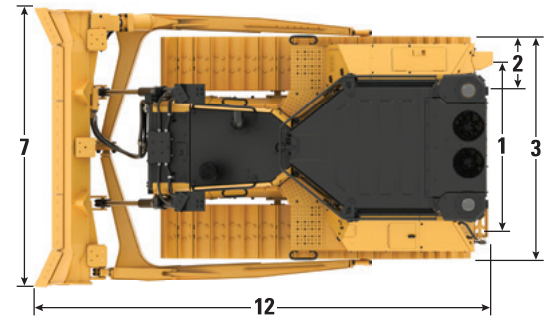
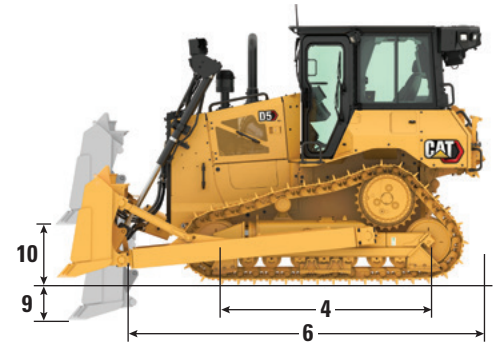
All dimensions above with Cat HDXL undercarriage with Extreme Service shoes of maximum width for configuration, SU Landfill blade, and calculated per ISO 16754 unless otherwise specified.

*Operating weight includes full Waste Handler package with landfill blade, lubricants, coolant, full fuel tank, ROPS/FOPS waste cab, cab air pressurizer, rear striker bar/box, waste undercarriage, guarded final drives, center hole track and 75 kg (165 lb) operator.

**Shipping weight includes full Waste Handler package, with landfill blade and push arms installation (aside), blade lift cylinders, C-frame, lubricants, coolant, 10% fuel, ROPS/FOPS waste cab, cab air pressurizer, rear striker bar/box, waste undercarriage, guarded final drives, center hole track.

***Machine height from tip of grouser to top of Product Link Antenna. When Cat Grade with 3D antennas are installed there is no added machine height.

****Length of Basic Tractor from the back of the rear striker box to the tip of the retracted lift cylinders.



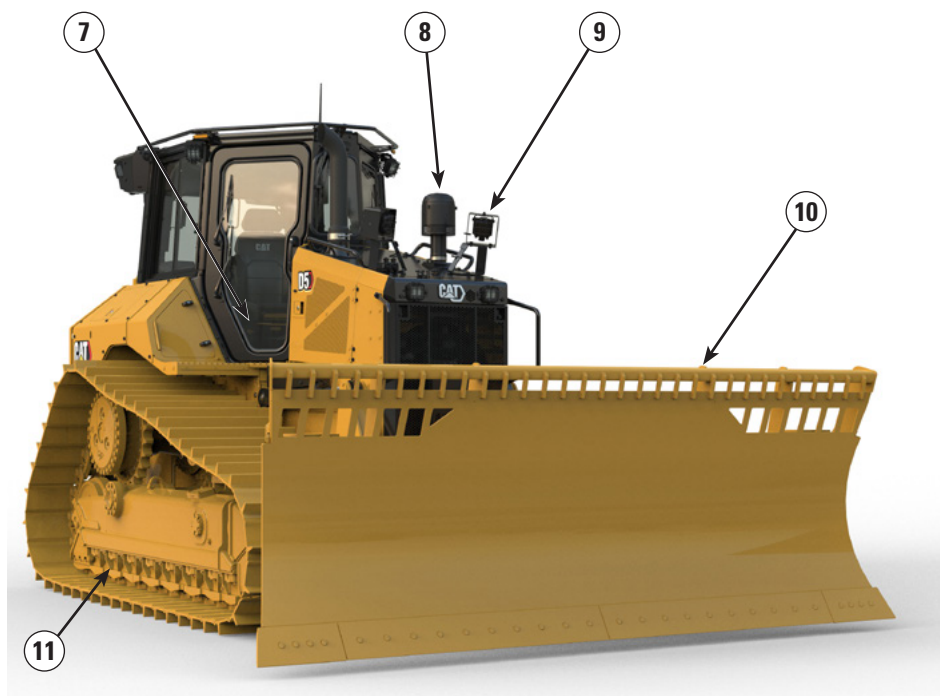
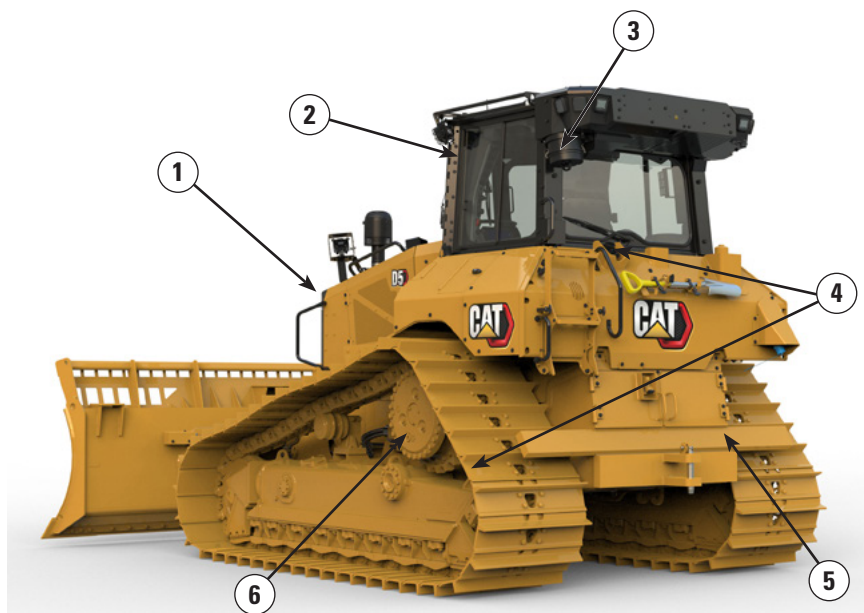
Standard SU Configuration Shown

Blade

Configuration	SU Landfill	
Capacity (ISO 9246 – including trash rack on moldboard)	7.3 m ³	9.5 yd ³
7 Width across End Bits	3164 mm	10.4 ft
Width without End Bits	3122 mm	10.2 in
8 Height	1703 mm	67.0 in
9 Dig Depth	544 mm	21.4 in
10 Lift Height	1104 mm	43.4 in
11 Maximum Tilt at Blade Corner	140 mm	5.5 in
12 Maximum Tilt Angle	8°	
Pitch Adjustment	±5.1°	
Length of Machine with SU Landfill Blade	5240 mm	206 in
Blade Weight (Landfill blade + HD push arms installed)	2250 kg	4,960 lb

D5 Waste Handler Features

- 1) Trash resistant radiator, with 6.4 fins per inch, helps reduce plugging. Automatic reversing fan for easy cleanout access.
- 2) High debris cab has impact-resistant polycarbonate doors and solid side windows for improved pressurization.
- 3) Powered air precleaner helps keep cab air cleaner and pressurized for greater operator comfort. A variety of optional filters are available from Cat Parts to customize filtration for the environment.
- 4) Fuel tank/fuel tank cover guard and heavy duty bottom guards shield major machine components. Internal sealing keeps the trash away from the inner compartments.
- 5) Rear striker bar helps protect against trash climbing up the tracks.
- 6) Guarded final drives give added protection against wrapping and impact.



- 7) Quick access cab floor option offers tool-less access to the floor plate opening.
- 8) Optional engine air cleaner with turbine/screen delivers cleaner air to the power train.
- 9) 12 premium LED lights illuminate the work area.
- 10) Landfill Blades are equipped with a trash rack to increase productive capacity when machine works in lighter material like waste.

11) Waste Undercarriage

- Heavy Duty Extended Life (HDXL) undercarriage includes Kevlar guarded, sealed idlers to help prevent debris such as wire, string or plastic bags from wrapping into seals.
- Center-hole track helps eject debris.

D5 Waste Handler Specifications

Track Shoes

Some track shoes not available in all regions. Please consult your Cat dealer for details.

Note: While a variety of track shoes are available, Center Hole track shoes highly recommended for best performance in Waste/Landfill applications.

Standard			
560 mm (22 in)	Heavy Duty Extended Life (HDXL)	Moderate Service	
560 mm (22 in)	HDXL	Extreme Service	
600 mm (24 in)	HDXL	Moderate Service	
600 mm (24 in)	HDXL	Extreme Service	
600 mm (24 in)	HDXL	Extreme Service	Center Hole
LGP			
840 mm (33 in)	HDXL	Extreme Service	
840 mm (33 in)	HDXL	Extreme Service	Center Hole
860 mm (34 in)	HDXL	Extreme Service	

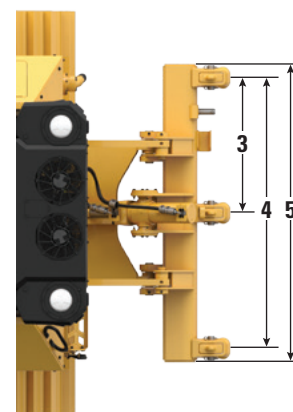
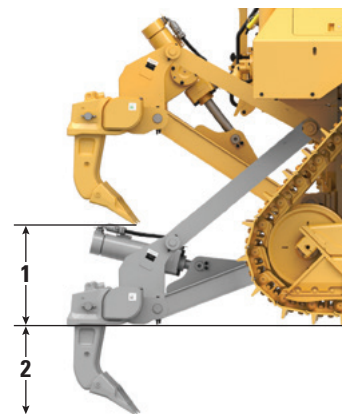
Dimensions – Rear Attachments

Add the following to the total length of the machine when these rear attachments are installed.

D5	Drawbar		Winch		Ripper		Striker Box	
Push Arm and VPAT Dozers	16 mm	0.6 in	446 mm	17.6 in	1060 mm	41.7 in	152 mm	6 in

Ripper

Type	Fixed Parallelogram	
Weight with Three Shanks	1393 kg	3,071 lb
1 Maximum Clearance, Raised (Shank Tip)		
D5 VPAT/Push Arms	404 mm	15.9 in
D5 LGP VPAT	518 mm	20.4 in
2 Maximum Penetration		
Standard	552 mm	21.7 in
LGP	437 mm	17.2 in
3 Pocket Spacing	1000 mm	3 ft 3.4 in
4 Shank Gauge	2 m	6 ft 7 in
Shank Section	73 mm × 176 mm	2.9 in × 6.9 in
Number of Pockets	3	
5 Overall Beam Width	2202 mm	86.7 in
Beam Cross Section	219 mm × 254 mm	8.6 in × 10.0 in
Maximum Penetration Force		
Standard	51.6 kN	11,600 lbf
LGP	43 kN	9,667 lbf
Maximum Pryout Force		
Standard	211.2 kN	47,480 lbf
LGP	170 kN	38,217 lbf



D5 Waste Handler Specifications

Winch

Winch Model	PA55 Standard Speed	
Weight*	1277 kg	2,815 lb
Oil Capacity	73 L	19.3 gal
Winch and Bracket Length	1145 mm	45.1 in
Winch Case Width	975 mm	38.4 in
Drum Diameter	254 mm	10 in
Drum Width	315 mm	12.4 in
Flange Diameter	504 mm	19.8 in
Drum Capacity – 22 mm (0.88 in)	88 m	288 ft 9 in
Winch Drive	Mechanical	
Control	Electric	
Overall Width	975 mm	38.4 in
Rope Diameter (recommended)	19 mm	0.75 in
Cable Ferrule Size (O.D. × Length)	54 mm × 67 mm	2.1 in × 2.6 in
Maximum Bare Drum		
Line Pull	31 388 kg*	69,200 lb*
Line Speed	43 m/min	141 ft/min
Maximum Full Drum		
Line Pull	23 359 kg*	54,100 lb*
Line Speed	66 m/min	210 ft/min

Winch Model	PA55 Slow Speed	
Weight*	1277 kg	2,815 lb
Oil Capacity	73 L	19.3 gal
Winch and Bracket Length	1145 mm	45.1 in
Winch Case Width	975 mm	38.4 in
Drum Diameter	254 mm	10 in
Drum Width	315 mm	12.4 in
Flange Diameter	504 mm	19.8 in
Drum Capacity – 22 mm (0.88 in)	88 m	288 ft 9 in
Winch Drive	Mechanical	
Control	Electric	
Overall Width	975 mm	38.4 in
Rope Diameter (recommended)	19 mm	0.75 in
Cable Ferrule Size (O.D. × Length)	54 mm × 67 mm	2.1 in × 2.6 in
Maximum Bare Drum		
Line Pull	31 388 kg*	69,200 lb*
Line Speed	16 m/min	53 ft/min
Maximum Full Drum		
Line Pull	31 388 kg*	69,200 lb*
Line Speed	28 m/min	91 ft/min

*Weight: Includes pump, operator controls, oil, mounting brackets and spacers.

Slow and standard speed winches are available.

D5 Waste Handler Specifications

Standards

ROPS/FOPS/OPS

- ROPS (Rollover Protective Structure) offered by Caterpillar for the machine meets ROPS criteria ISO 3471:2008.
- FOPS (Falling Object Protective Structure) meets ISO 3449:2005 Level II.
- OPS (Operator Protective Structure) screens meets OPS criteria per ISO 8084:2003 and WCB G604:2011.

Brakes

- Brakes meet the standard ISO 10265:2008.

Sound Level Information

Hearing protection may be needed when the machine is operated with an open operator station, in a noisy environment, with a cab that is not properly maintained, or when the doors and windows are open for extended periods of time.

Sound Level		Test Method
Operator Sound Pressure Level	76 dB(A)	“ISO 6396:2008” ⁽¹⁾
Exterior Sound Power Level	111 dB(A)	“ISO 6395:2008” ⁽²⁾

⁽¹⁾The measurement was conducted at 70% of the maximum engine cooling fan speed. The sound level may vary at different engine cooling fan speeds. The measurement was conducted with the cab doors and the cab windows closed. The cab was properly installed and maintained.

⁽²⁾The measurement was conducted at 70% of the maximum engine cooling fan speed. The sound level may vary at different engine cooling fan speeds.

The sound levels listed above include both measurement uncertainty and uncertainty due to production variation.

Vibration Levels

Maximum Hand/Arm*	
ISO 5349:2001	2.5 m/s ²
Maximum Whole Body*	
ISO/TR25398:2006	0.5 m/s ²
Seat Transmissibility Factor	
ISO 7096:2020 – spectral class EM6	<0.7

- Values are for an experienced operator in a dozing application, consult the Operating and Maintenance Manual for further details.

Advanced Cabin Filtration

Operator Cabin

- Distributed HVAC ducting with automatic temperature control and blower speed provides ultimate operator comfort with less user input.
- Reduced maintenance of the condenser core with automatic reversing fans.
- Cat Advanced Cabin Filtration is standard.

Cat Advanced Cabin Filtration

- Operator protection from respirable particulate (0.3-10-micron size).
- Sustainably pressurized cab (U.S. Silica compliant).
- Reduced maintenance with longer life, high efficiency filters.
- Protection for all cabin components: electronics, etc.
- Helps meet U.S. Occupational Safety and Health Administration Silica Rule Table 1 requirements for operator cabs.
- Multi-tiered filter offerings for optional efficiency upgrades. Contact Cat dealer for availability.
 - MERV 16 – Standard Equipment
 - HEPA
 - Activated Carbon + HEPA
 - ABEK1 + HEPA

Dozer Technology Features

Assist technology features to help operators of varied experience levels get the job done faster and more accurately. Grade and Command offerings help further enhance your productivity, efficiency and job site safety.

Premium, Heavy Duty and High Debris cabs are Third Party Grade Control Ready, equipped with CAN interface, harness pass throughs and mounting features to make it easier to install the grade control system of your choice.

ARO with Assist Package

Attachment Ready Option (ARO)	ARO provides wiring and mounting provisions for dealer installation of Grade with 3D, AccuGrade, UTS, or other grade control systems.
Cat Grade with Slope Assist™	Slope Assist automatically maintains pre-established blade position without a GNSS/GPS signal – no additional hardware or software needed. For machines with 3D, operators can easily switch back and forth from full 3D automatics to Slope Assist.
Steer Assist	Steer Assist automates track and blade tilt steering. Helps reduce operator fatigue by automatically maintaining straight travel with light loads or heavy loads on flat ground and cross slopes. No GNSS/GPS required.
Stable Blade	Stable Blade works seamlessly with operator inputs to help produce a smoother surface when operating manually.
Slope Indicate	Slope Indicate is included in the main machine display and shows side slope and uphill/downhill grades to help operators with slope work.
Blade Load Monitor	Blade Load Monitor gives you real-time feedback on current load versus the optimal blade load based on your ground conditions. Actively monitors machine load and track slip to help you reach optimal pushing capacity. ¹
Traction Control	Traction Control automatically reduces track slip to save you time, fuel and track wear. ¹
AutoCarry™	AutoCarry automates blade lift to help you maintain consistent blade load and help reduce track slip. ¹

Grade 3D with Assist Package

Includes all features from the ARO with Assist Package listed above, plus:

Cat Grade with 3D	Factory integrated Cat Grade with 3D uses GNSS/GPS to control the blade so you can get to design plan faster. Low profile antennas are integrated into the cab roof and GNSS/GPS receivers are mounted inside the cab for better protection. ²
Steer Assist 3D	Automatically follow guidance lines from site design plans (or Infield designs) under light load or heavy load. ²
Dedicated Touchscreen Grade Display	Full-color Grade operator interface is intuitive and easier to use. The 254 mm (10 in) touchscreen uses an Android OS platform and operates like a smart phone.

Remote Control/Cat Command

Remote Control Ready Cab (Optional)	Cab is Remote Control Ready from the factory with external connector for dealer installation of the Cat Command remote control system.
Command for Dozing ² (Optional)	Cat Command remote control technology provides full dozer maneuverability from a safe distance when working in hazardous environments. Command offers the choice of line-of-sight consoles or long-distance operator stations (non-line-of-sight).

¹Feature not operational indoors or in areas where a GPS signal is not available.

²Requires Software Enabled Attachment (SEA) installation when not configured from the factory.

Note: Grade and Assist technologies, except Slope Indicate, Blade Load Monitor and Traction Control, are not compatible with Angle blades or specialty blades from Cat Work Tools. Please consult with your Cat dealer for details.

D5 Waste Handler Standard and Optional Equipment

Standard and Optional Equipment

Standard and optional equipment may vary. Consult your Cat dealer for details.

	Standard	Optional		Standard	Optional
POWER TRAIN			CAT TECHNOLOGY		
Cat C7.1 diesel engine	✓		Slope Indicate	✓	
Fully-automatic 3-speed transmission:	✓		ARO with Assist Package		✓
– Automatic directional and downshift			– ARO		
– Controlled throttle, load compensated			– Slope Assist		
– Infinite ground speed adjustment			– Steer Assist		
– Programmable/selectable			– Stable Blade		
– bi-directional shifting			– Blade Load Monitor		
Air-to-air aftercooler (ATAAC)	✓		– Traction Control		
Debris resistant radiator cores	+		– AutoCarry		
6.4 fins per inch			Grade 3D with Assist Package		✓
Automatic glowplugs	✓		– Full-color 10-inch (254 mm)		
Differential steering	✓		– touchscreen grade display		
Engine air precleaner	✓		– Steer Assist 3D		
Engine air precleaner with turbine/screen		*	– Grade receivers and antennas		
Engine idle shutdown		✓	– Grade Software Enabled		
Enhanced Power Train Control:	✓		– Attachment (SEA)		
– Hill Decent Control			– ARO with Assist package features		
– Hill Hold			Third Party Grade Control Ready Cab	✓	
– Decel Brake Pedal			Compatibility with radios and base	✓	
– Steering Radius Control			stations from Trimble, Topcon, and Leica		
Extended life coolant	✓		Capability to install 3D grade systems	✓	
Ether starting aid		✓	from Trimble, Topcon, and Leica		
Final Drives – Waste (Standard or LGP)	+		Product Link, Cellular	✓	
Fuel priming pump	✓		Product Link – Dual Cellular/Satellite		✓
Fuel water separator	✓		Remote Flash/Troubleshoot	✓	
Fuel line heater		✓	Grade Connectivity		✓
Hydraulic reversing fan	+		Operator ID	✓	
Sound suppression (Brazil only)		✓	Machine Security – Passcode	✓	
Trash Resistant Radiator Cores	+		Machine Security – Bluetooth		✓
			Remote Control Ready cab		✓
			Cat Command for Dozing		✓

+Included in Waste Handler Package

*Recommended

(continued on next page)

D5 Waste Handler Standard and Optional Equipment

Standard and Optional Equipment *(continued)*

Standard and optional equipment may vary. Consult your Cat dealer for details.

	Standard	Optional		Standard	Optional
OPERATOR ENVIRONMENT			UNDERCARRIAGE		
High Debris/Waste cab with integrated ROPS and FOPS, impact resistant polycarbonate doors, solid side windows. Cab is technology- and remote control-ready.	+		Standard or Low Ground Pressure (LGP) undercarriage	✓	
Full-color 10-inch (254 mm) liquid crystal touchscreen display	✓		Heavy Duty (HDXL with DuraLink) Waste undercarriage	+	
Integrated rearview camera	✓		Carrier rollers	✓	
In-display key machine features	✓		Hydraulic track adjusters	✓	
Application Profile	✓		Lifetime lubricated track and rollers	✓	
Operator ID/Operator ID with Security	✓		Extreme service center hole track shoes (see chart on page 26)	+	
Premium cab with adjustable armrests	✓		Redesigned track roller frame	✓	
Cloth seat	✓		Track roller frame guiding guards: center, partial or full (NOTE: center guiding guards standard on LGP machine)		✓
Deluxe leather heated/ventilated seat		✓	BULLDOZERS		
Electrohydraulic implement and steering controls	✓		VPAT dozer package		✓
Joystick control	✓		SU heavy duty dozer package		*
Joystick control – ARO		✓	BLADES		
Powered fresh air filter precleaner	+		Waste/Landfill – Semi-Universal		*
Cab mounted modular Heating/Ventilation/Air Conditioning (HVAC) system	✓		Waste/Landfill – VPAT		*
Rearview mirror	✓		VPAT		✓
Retractable 76 mm (3 in) seatbelt	✓		Semi-Universal		✓
Grab rails/tie offs on both sides of cab roof	✓		Foldable VPAT		✓
Communication radio ready		✓	HYDRAULICS		
Radio, AM/FM/Aux/USB/Bluetooth		✓	Load sensing hydraulics	✓	
Added storage areas	✓		Independent steering and implement pumps	✓	
Cup holders	✓				
Dash foot pads	✓				
Glove box	✓				
Lunchbox storage	✓				
Wipers	✓				

(continued on next page)

+Included in Waste Handler Package

*Recommended

D5 Waste Handler Standard and Optional Equipment

Standard and Optional Equipment (continued)

Standard and optional equipment may vary. Consult your Cat dealer for details.

	Standard	Optional		Standard	Optional
ELECTRICAL			BATTERIES, STARTERS, ALTERNATORS AND COOLANT		
Premium lights – 12 LED	+		95 Amp alternator	✓	
Backup alarm	✓		24 Volt starter	✓	
Beacon warning light		*	Arctic engine coolant, –51° C (–60° F)		✓
Converter: one 15 Amp, 12V outlet	✓		Engine coolant, –37° C (–35° F)	✓	
Forward warning horn	✓		Cold Weather package: heavy duty battery, heavy duty starter, ether starting aid, jacket water heater		✓
SERVICE AND MAINTENANCE			ATTACHMENTS		
30-minute cab removal	✓		Ripper-ready rear hydraulics		✓
Adjustable pitch link (VPAT)	✓		Dual ripper/winch control		✓
Centralized, remote mounted pressure taps	✓		Ripper with straight or curved shanks		✓
Ecology drains		✓	Winch:		✓
Extended service intervals (500 hours engine, 1,000 hours power train)	✓		– PACCAR PA55, low speed PTO		
Fast fuel fill		✓	– PACCAR PA55, standard speed PTO		
Ground level service center (remote electrical disconnect, secondary shutdown switch, optional hour meter)	✓		– Fairlead Assembly; 3-roller, fits PA55 winches		
High-speed oil change		✓	– Retrofit kit (4th roller); fits PA55 winches		
Heavy duty perforated radiator doors, louvered and hinged	✓		Drawbar		✓
Quick Access cab floor		*	Rear striker box with striker bar	+	
Rear access ladder	✓		GUARDING AND SCREENS		
Rear work light		✓	Bottom guards – heavy duty	+	
Refilling fuel pump (Brazil only)		✓	Fuel tank guards	+	
Removable engine enclosures, perforated and hinged	✓		Grab handles	✓	
S·O·S SM sampling ports	✓		Guards for premium lights, front and side	+	
Shovel holder	✓		Side and rear screens		✓
Under hood work light		✓	Heavy duty rear enclosures	+	
			Sealing throughout the machine for added debris protection	+	

+Included in Waste Handler Package

*Recommended



D5

Heavy Duty/Forestry

Take on the demands of forestry and land clearing work with factory-installed equipment designed to help protect the operator and the machine in harsh applications.

Next Generation Performance

- Harness more weight and horsepower than D6N to take on a wide range of forestry and land clearing tasks.
- Fully automatic 3-speed transmission gives you seamless acceleration, faster cycle times and more nimble movement around the site.
- No need to shift – just set your desired ground speed and the dozer adjusts for maximum fuel efficiency and power to the ground.
- Completely redesigned, more spacious cab for a whole new standard in comfort and productivity.
- More glass area, steeper hood angle provide 30 percent better forward visibility than the previous model.

Heavy Duty/Forestry

- High debris cab has impact-resistant polycarbonate doors.
- Includes rear/side window screens and sweeps to help protect the machine and operator from debris.
- Heavy duty guarding package with heavy duty bottom guards and fuel tank guard to help shield major machine components.
- Optional engine air cleaner with turbine/screen delivers cleaner air to the power train.
- 12 premium LED lights illuminate the work area.

D5 Heavy Duty/Forestry Specifications

Engine

Engine Model	Cat C7.1	
Emissions	Brazil MAR-1 and UN ECE R96 Stage IIIA emission standards, equivalent to U.S. EPA Tier 3/EU Stage IIIA	
Power Train	Fully automatic 3-speed	
Net Power (1,770 rpm)		
ISO 9249/SAE J1349	127 kW	170 hp
ISO 9249 (DIN)	172 mhp	
Engine Power – Maximum (1,700 rpm)		
ISO 14396	147 kW	198 hp
ISO 14396 (DIN)	200 mhp	
Gross Power – Maximum (1,700 rpm)		
SAE J1995	150 kW	201 hp
Bore	105 mm	4.1 in
Stroke	135 mm	5.3 in
Displacement	7.1 L	433 in ³

- Net power advertised is the power available at the engine flywheel when the engine is equipped with a fan, air cleaner, clean emissions module and alternator.
- Advertised power is tested per the specified standard in effect at the time of manufacture.
- No derating required up to 3000 m (9,840 ft) altitude, beyond 3000 m (9,840 ft) automatic derating occurs.
- Cat engines are compatible with diesel fuel blended with the following lower-carbon intensity fuels up to:
 - ✓ 100% biodiesel FAME (fatty acid methyl ester)*
 - ✓ 100% renewable diesel, HVO (hydrotreated vegetable oil) and GTL (gas-to-liquid) fuels

Refer to guidelines for successful application. Please consult your Cat dealer or “Caterpillar Machine Fluids Recommendations” (SEBU6250) for details.

**For use of blends higher than 20% biodiesel, consult your Cat dealer.*

Air Conditioning System

The air conditioning system on this machine contains the fluorinated greenhouse gas refrigerant R134a (Global Warming Potential = 1430). The system contains 1.36 kg of refrigerant which has a CO₂ equivalent of 1.946 metric tonnes.

Fluid/Refill Capacities

Fuel Tank	315 L	83.2 gal
Cooling System	41 L	10.8 gal
Engine Crankcase	18 L	4.8 gal
Power Train	160 L	42.3 gal
Roller Frames Standard/LGP (each)	18/27 L	4.8/7.1 gal
Final Drives (each)	8 L	2.1 gal
Hydraulic System	80 L	21.1 gal

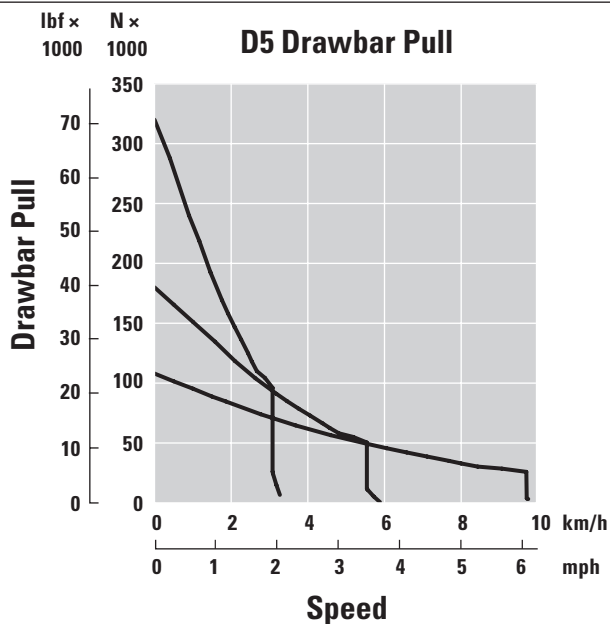
Transmission

0.5 Forward	2.5 km/h (2.4 km/h)	1.6 mph (1.5 mph)
1.0 Forward	3.3 km/h (3.0 km/h)	2.1 mph (1.9 mph)
1.5 Forward	4.4 km/h	2.7 mph
2.0 Forward	5.8 km/h	3.6 mph
2.5 Forward	7.5 km/h	4.7 mph
3.0 Forward	9.8 km/h	6.1 mph
0.5 Reverse	3.1 km/h (2.9 km/h)	1.9 mph (1.8 mph)
1.0 Reverse	4.1 km/h (3.5 km/h)	2.5 mph (2.2 mph)
1.5 Reverse	5.4 km/h	3.4 mph
2.0 Reverse	7.1 km/h	4.4 mph
2.5 Reverse	9.5 km/h	5.9 mph
3.0 Reverse	12.2 km/h	7.6 mph
Maximum Drawbar Pull		
1.0 Forward	320 kN	71,939 lbf
2.0 Forward	198 kN	44,512 lbf
3.0 Forward	113 kN	25,403 lbf

NOTE: Data between brackets are values for Brazil.

D5 Heavy Duty/Forestry Specifications

Drawbar Pull



Hydraulic Controls – Pressures

Maximum Implement Operating Pressure	25 000 kPa	3,626 psi
Maximum Steering Operating Pressure	45 000 kPa	6,527 psi

Hydraulic Controls – Pump

Pump Output		
Implement	127 L/min	33.5 gal/min
Steering	165 L/min	43.5 gal/min
Fan	49 L/min	12.9 gal/min
Lift Cylinder Flow	127 L/min	33.5 gal/min
Tilt Cylinder Flow	127 L/min	33.5 gal/min
Ripper Cylinder Flow	127 L/min	33.5 gal/min
Angle Cylinder Flow – VPAT	127 L/min	33.5 gal/min

D5 Heavy Duty/Forestry Specifications

D5 VPAT – Heavy Duty/Forestry

Operating Weight*	18 080 kg	39,866 lb
Shipping Weight**	17 850 kg	39,359 lb
Ground Pressure (ISO 16754)	50.4 kPa	7.3 psi
Undercarriage (Standard)	40 Section/ 7 Bottom Rollers	
1 Track Gauge	1890 mm	74.4 in
2 Width of Track Shoe (Standard)	610 mm	24 in
3 Width of Tractor	2500 mm	98.4 in
4 Length of Track on Ground	2562 mm	100.9 in
Ground Contact Area (ISO 16754)	3.5 m ²	5,469 in ²
Grouser Height (Moderate/Extreme Service)	57/66 mm	2.2/2.6 in
Ground Clearance	358 mm	14.1 in
5 Machine Height***	3163 mm	124.5 in
6 Length of Basic Tractor****	4689 mm	184.6 in

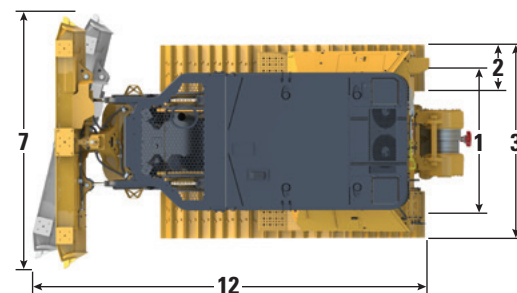
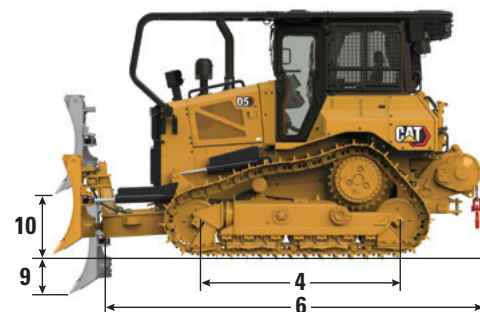
All dimensions above with Cat Abrasion undercarriage with Extreme Service shoes of maximum width for configuration, VPAT blade, and calculated per ISO 16754 unless otherwise specified.

*Operating weight includes full Heavy Duty/Forestry package, VPAT blade, lubricants, coolant, full fuel tank, ROPS/FOPS forestry cab, drawbar and 75 kg (165 lb) operator.

**Shipping weight includes full Heavy Duty/Forestry package with VPAT blade (aside), blade lift cylinders, C-Frame, lubricants, coolant, 10% fuel, ROPS/FOPS forestry cab, drawbar.

***Machine height from tip of grouser to top of Product Link Antenna installed on forestry sweeps.

****Length of Basic Tractor from the back of the forestry sweeps to the tip of the C-Frame.



Blade

Configuration	VPAT	
Capacity (ISO 9246)	3.5 m ³	4.6 yd ³
7 Width across End Bits	3272 mm	10.7 ft
Width without End Bits	3159 mm	10.4 ft
Width across End Bits (Blade Angled 24°)	2998 mm	118.0 in
Width without End Bits (Blade Angled 24°)	2908 mm	114.5 in
Maximum Blade Angle	24°	
8 Height	1261 mm	49.6 in
9 Dig Depth	559 mm	22.0 in
10 Lift Height	971 mm	38.2 in
11 Maximum Tilt at Blade Corner	257 mm	10.1 in
Maximum Tilt Angle	8.5°	
Pitch Adjustment	60° (cutting edge/ground, nominal); -2°/+4°	
12 Length of Machine (Blade Straight)	5081 mm	200 in
Length of Machine (Blade Angled 24°)	5770 mm	227 in
Blade Weight	1090 kg	2,403 lb

D5 Heavy Duty/Forestry Specifications

D5 LGP VPAT – Heavy Duty/Forestry

Operating Weight*	20 070 kg	44,254 lb
Shipping Weight**	19 840 kg	43,747 lb
Ground Pressure (ISO 16754)	34.3 kPa	4.97 psi
Undercarriage (Standard)	46 Section/ 8 Bottom Rollers	
1 Track Gauge	2160 mm	85.0 in
2 Width of Track Shoe (Standard)	840 mm	33 in
3 Width of Tractor	3000 mm	118.1 in
4 Length of Track on Ground	3116 mm	122.7 in
Ground Contact Area (ISO 16754)	5.8 m ²	8,995 in ²
Grouser Height (Moderate/Extreme Service)	57/66 mm	2.2/2.6 in
Ground Clearance	473 mm	18.6 in
5 Machine Height***	3200 mm	126.0 in
6 Length of Basic Tractor****	5012 mm	197.3 in

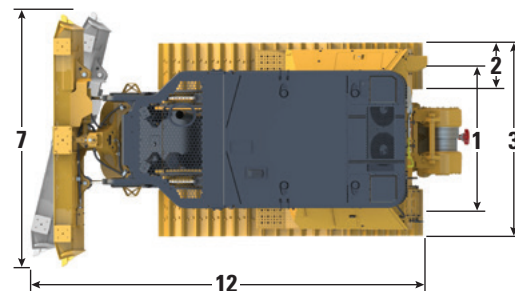
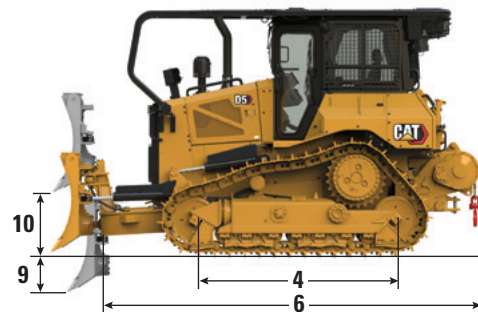
All dimensions above with Cat Abrasion undercarriage with Extreme Service shoes of maximum width for configuration, VPAT blade, and calculated per ISO 16754 unless otherwise specified.

*Operating weight includes full Heavy Duty/Forestry package, VPAT blade, lubricants, coolant, full fuel tank, ROPS/FOPS forestry cab, drawbar and 75 kg (165 lb) operator.

**Shipping weight includes full Heavy Duty/Forestry package with VPAT blade (aside), blade lift cylinders, C-Frame, lubricants, coolant, 10% fuel, ROPS/FOPS forestry cab, drawbar.

***Machine height from tip of grouser to top of Product Link Antenna installed on forestry sweeps.

****Length of Basic Tractor from the back of the forestry sweeps to the tip of the C-Frame.



Standard VPAT Model Shown

Blade

Configuration	LGP VPAT	
Capacity (ISO 9246)	4.0 m ³	5.2 yd ³
7 Width across End Bits	4080 mm	13.4 ft
Width without End Bits	3969 mm	156.3 in
Width across End Bits (Blade Angled 24°)	3736 mm	147.1 in
Width without End Bits (Blade Angled 24°)	3640 mm	143.3 in
Width across End Bits (Blade Angled 33° for transportation purpose only)	—	
Maximum Blade Angle	24°	
8 Height	1263 mm	49.7 in
9 Dig Depth	580 mm	22.8 in
10 Lift Height	1051 mm	41.4 in
11 Maximum Tilt at Blade Corner	371 mm	14.6 in
Maximum Tilt Angle	8.5°	
Pitch Adjustment	60° (cutting edge/ground, nominal); -2°/+4°	
12 Length of Machine (Blade Straight)	5350 mm	211 in
Length of Machine (Blade Angled 24°, without fuel tank guard)	6137 mm	242 in
VPAT Blade foldable, angled 33° for transportation purpose only	—	
Weight (Blade)	1256 kg	2,769 lb

D5 Heavy Duty/Forestry Specifications

D5 SU – Heavy Duty/Forestry

Operating Weight*	18 420 kg	40,616 lb
Shipping Weight**	18 190 kg	40,102 lb
Ground Pressure (ISO 16754)	51.5 kPa	7.5 psi
Undercarriage	40 Section/ 7 Bottom Rollers	
1 Track Gauge	1890 mm	74.4 in
2 Width of Track Shoe (Standard)	610 mm	24 in
3 Width of Tractor (without trunnions)	2500 mm	98.4 in
4 Length of Track on Ground	2562 mm	100.9 in
Ground Contact Area (ISO 16754)	3.5 m ²	5,469 in ²
Grouser Height (Moderate/Extreme Service)	57/66 mm	2.2/2.6 in
Ground Clearance	358 mm	14.1 in
5 Machine Height***	3163 mm	124.5 in
6 Length of Basic Tractor****	4095 mm	161.2 in

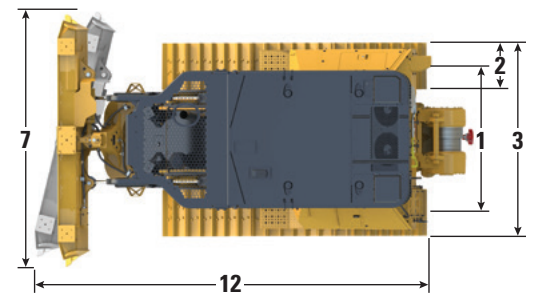
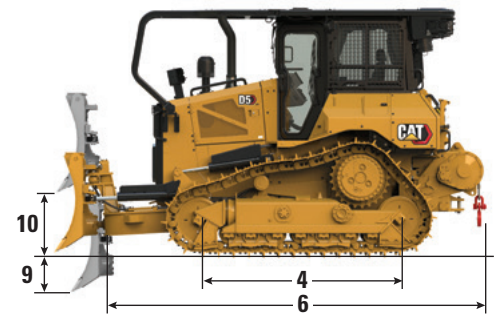
All dimensions above with Cat Abrasion undercarriage with Extreme Service shoes of maximum width for configuration, SU blade, and calculated per ISO 16754 unless otherwise specified.

*Operating weight includes full Heavy Duty/Forestry package, SU blade and HD push arms installation, lubricants, coolant, full fuel tank, ROPS/FOPS forestry cab, drawbar and 75 kg (165 lb) operator.

**Shipping weight includes full Heavy Duty/Forestry package, with SU blade and HD push arms installation (aside), blade lift cylinders, lubricants, coolant, 10% fuel, ROPS/FOPS forestry cab, drawbar.

***Machine height from tip of grouser to top of Product Link Antenna installed on forestry sweeps.

****Length of Basic Tractor from the back to the front of the forestry sweeps.



Standard VPAT Model Shown

Blade

Configuration	SU	
Capacity (ISO 9246)	4.3 m ³	5.6 yd ³
7 Width across End Bits	3164 mm	10.4 ft
Width without End Bits	3122 mm	10.2 in
8 Height	1338 mm	52.7 in
9 Dig Depth	544 mm	21.4 in
10 Lift Height	1104 mm	43.4 in
11 Maximum Tilt at Blade Corner	140 mm	5.5 in
Maximum Tilt Angle	8°	
Pitch Adjustment	±5.1°	
12 Length of Machine with SU Blade	5168 mm	203 in
Blade Weight (blade + HD push arms installed)	2050 kg	4,520 lb

D5 Heavy Duty/Forestry Specifications

D5 Heavy Duty/Forestry Features

- 1) Optional reversing fan helps remove debris with less maintenance time.
- 2) Optional engine air cleaner with turbine/screen delivers cleaner air to the power train.
- 3) High debris cab with impact-resistant polycarbonate doors.
- 4) Includes rear/side window screens and sweeps to help protect the machine and operator from debris.
- 5) Heavy duty guarding package with heavy duty bottom guards and fuel tank guard to help shield major machine components.



- 6) Quick access cab floor option offers tool-less access to the floor plate opening.
- 7) 12 premium LED lights illuminate the work area.
- 8) Heavy duty bulldozer package with guarding on lift and tilt lines.
- 9) Choose from a variety of blade and track shoe options to equip your dozer for the job.

D5 Heavy Duty/Forestry Specifications

Track Shoes

Some track shoes not available in all regions. Please consult your Cat dealer for details.

Standard			
560 mm (22 in)	Heavy Duty Extended Life (HDXL)	Moderate Service	
560 mm (22 in)	HDXL	Extreme Service	
560 mm (22 in)	Cat Abrasion	Extreme Service	
600 mm (24 in)	HDXL	Moderate Service	
600 mm (24 in)	HDXL	Moderate Service	Fine Grading
600 mm (24 in)	HDXL	Extreme Service	
600 mm (24 in)	HDXL	Extreme Service	Center Hole
610 mm (24 in)	Cat Abrasion	Moderate Service	Fine Grading
610 mm (24 in)	Cat Abrasion	Extreme Service	
610 mm (24 in)	Cat Abrasion	Extreme Service	Center Hole
LGP			
840 mm (33 in)	HDXL	Extreme Service	
840 mm (33 in)	HDXL	Extreme Service	Center Hole
840 mm (33 in)	Cat Abrasion	Moderate Service	
840 mm (33 in)	Cat Abrasion	Extreme Service	
860 mm (34 in)	HDXL	Extreme Service	
860 mm (34 in)	HDXL	Self-Cleaning	
860 mm (34 in)	Cat Abrasion	Extreme Service	

D5 Heavy Duty/Forestry Specifications

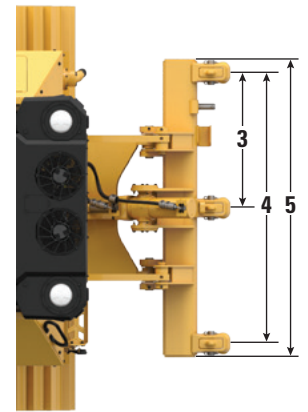
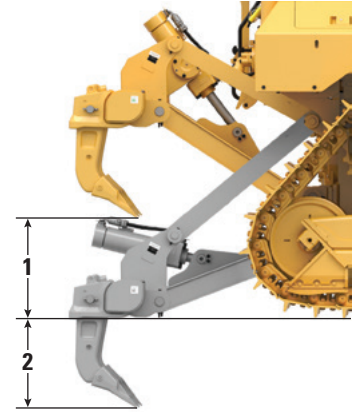
Dimensions – Rear Attachments

Add the following to the total length of the machine when these rear attachments are installed.

D5	Drawbar		Winch		Ripper		Striker Box	
Push Arm and VPAT Dozers	16 mm	0.6 in	446 mm	17.6 in	1060 mm	41.7 in	152 mm	6 in

Ripper

Type	Fixed Parallelogram	
Weight with Three Shanks	1393 kg	3,071 lb
1 Maximum Clearance, Raised (Shank Tip)		
D5 VPAT/Push Arms	404 mm	15.9 in
D5 LGP VPAT	518 mm	20.4 in
2 Maximum Penetration		
Standard	552 mm	21.7 in
LGP	437 mm	17.2 in
3 Pocket Spacing	1000 mm	3 ft 3.4 in
4 Shank Gauge	2 m	6 ft 7 in
Shank Section	73 mm × 176 mm	2.9 in × 6.9 in
Number of Pockets	3	
5 Overall Beam Width	2202 mm	86.7 in
Beam Cross Section	219 mm × 254 mm	8.6 in × 10.0 in
Maximum Penetration Force		
Standard	51.6 kN	11,600 lbf
LGP	43 kN	9,667 lbf
Maximum Pryout Force		
Standard	211.2 kN	47,480 lbf
LGP	170 kN	38,217 lbf



D5 Heavy Duty/Forestry Specifications

Winch

Winch Model	PA55 Standard Speed	
Weight*	1277 kg	2,815 lb
Oil Capacity	73 L	19.3 gal
Winch and Bracket Length	1145 mm	45.1 in
Winch Case Width	975 mm	38.4 in
Drum Diameter	254 mm	10 in
Drum Width	315 mm	12.4 in
Flange Diameter	504 mm	19.8 in
Drum Capacity – 22 mm (0.88 in)	88 m	288 ft 9 in
Winch Drive	Mechanical	
Control	Electric	
Overall Width	975 mm	38.4 in
Rope Diameter (recommended)	19 mm	0.75 in
Cable Ferrule Size (O.D. × Length)	54 mm × 67 mm	2.1 in × 2.6 in
Maximum Bare Drum		
Line Pull	31 388 kg*	69,200 lb*
Line Speed	43 m/min	141 ft/min
Maximum Full Drum		
Line Pull	23 359 kg*	54,100 lb*
Line Speed	66 m/min	210 ft/min

Winch Model	PA55 Slow Speed	
Weight*	1277 kg	2,815 lb
Oil Capacity	73 L	19.3 gal
Winch and Bracket Length	1145 mm	45.1 in
Winch Case Width	975 mm	38.4 in
Drum Diameter	254 mm	10 in
Drum Width	315 mm	12.4 in
Flange Diameter	504 mm	19.8 in
Drum Capacity – 22 mm (0.88 in)	88 m	288 ft 9 in
Winch Drive	Mechanical	
Control	Electric	
Overall Width	975 mm	38.4 in
Rope Diameter (recommended)	19 mm	0.75 in
Cable Ferrule Size (O.D. × Length)	54 mm × 67 mm	2.1 in × 2.6 in
Maximum Bare Drum		
Line Pull	31 388 kg*	69,200 lb*
Line Speed	16 m/min	53 ft/min
Maximum Full Drum		
Line Pull	31 388 kg*	69,200 lb*
Line Speed	28 m/min	91 ft/min

*Weight: Includes pump, operator controls, oil, mounting brackets and spacers.

Slow and standard speed winches are available.

Standards

ROPS/FOPS/OPS

- ROPS (Rollover Protective Structure) offered by Caterpillar for the machine meets ROPS criteria ISO 3471:2008.
- FOPS (Falling Object Protective Structure) meets ISO 3449:2005 Level II.
- OPS (Operator Protective Structure) screens meets OPS criteria per ISO 8084:2003 and WCB G604:2011.

Brakes

- Brakes meet the standard ISO 10265:2008.

Sound Level Information

Hearing protection may be needed when the machine is operated with an open operator station, in a noisy environment, with a cab that is not properly maintained, or when the doors and windows are open for extended periods of time.

Sound Level		Test Method
Operator Sound Pressure Level	76 dB(A)	“ISO 6396:2008” ⁽¹⁾
Exterior Sound Power Level	111 dB(A)	“ISO 6395:2008” ⁽²⁾

⁽¹⁾The measurement was conducted at 70% of the maximum engine cooling fan speed. The sound level may vary at different engine cooling fan speeds. The measurement was conducted with the cab doors and the cab windows closed. The cab was properly installed and maintained.

⁽²⁾The measurement was conducted at 70% of the maximum engine cooling fan speed. The sound level may vary at different engine cooling fan speeds.

The sound levels listed above include both measurement uncertainty and uncertainty due to production variation.

Vibration Levels

Maximum Hand/Arm*	
ISO 5349:2001	2.5 m/s ²
Maximum Whole Body*	
ISO/TR25398:2006	0.5 m/s ²
Seat Transmissibility Factor	
ISO 7096:2020 – spectral class EM6	<0.7

- Values are for an experienced operator in a dozing application, consult the Operating and Maintenance Manual for further details.

Advanced Cabin Filtration

Operator Cabin

- Distributed HVAC ducting with automatic temperature control and blower speed provides ultimate operator comfort with less user input.
- Reduced maintenance of the condenser core with automatic reversing fans.
- Cat Advanced Cabin Filtration is standard.

Cat Advanced Cabin Filtration

- Operator protection from respirable particulate (0.3-10-micron size).
- Sustainably pressurized cab (U.S. Silica compliant).
- Reduced maintenance with longer life, high efficiency filters.
- Protection for all cabin components: electronics, etc.
- Helps meet U.S. Occupational Safety and Health Administration Silica Rule Table 1 requirements for operator cabs.
- Multi-tiered filter offerings for optional efficiency upgrades. Contact Cat dealer for availability.
 - MERV 16 – Standard Equipment
 - HEPA
 - Activated Carbon + HEPA
 - ABEK1 + HEPA

D5 Heavy Duty/Forestry Specifications

Dozer Technology Features

Assist technology features to help operators of varied experience levels get the job done faster and more accurately. Grade and Command offerings help further enhance your productivity, efficiency and job site safety.

Premium, Heavy Duty and High Debris cabs are Third Party Grade Control Ready, equipped with CAN interface, harness pass throughs and mounting features to make it easier to install the grade control system of your choice.

ARO with Assist Package

Attachment Ready Option (ARO)	ARO provides wiring and mounting provisions for dealer installation of Grade with 3D, AccuGrade, UTS, or other grade control systems.
Cat Grade with Slope Assist™	Slope Assist automatically maintains pre-established blade position without a GNSS/GPS signal – no additional hardware or software needed. For machines with 3D, operators can easily switch back and forth from full 3D automatics to Slope Assist.
Steer Assist	Steer Assist automates track and blade tilt steering. Helps reduce operator fatigue by automatically maintaining straight travel with light loads or heavy loads on flat ground and cross slopes. No GNSS/GPS required.
Stable Blade	Stable Blade works seamlessly with operator inputs to help produce a smoother surface when operating manually.
Slope Indicate	Slope Indicate is included in the main machine display and shows side slope and uphill/downhill grades to help operators with slope work.
Blade Load Monitor	Blade Load Monitor gives you real-time feedback on current load versus the optimal blade load based on your ground conditions. Actively monitors machine load and track slip to help you reach optimal pushing capacity. ¹
Traction Control	Traction Control automatically reduces track slip to save you time, fuel and track wear. ¹
AutoCarry™	AutoCarry automates blade lift to help you maintain consistent blade load and help reduce track slip. ¹

Grade 3D with Assist Package

Includes all features from the ARO with Assist Package listed above, plus:

Cat Grade with 3D	Factory integrated Cat Grade with 3D uses GNSS/GPS to control the blade so you can get to design plan faster. Low profile antennas are integrated into the cab roof and GNSS/GPS receivers are mounted inside the cab for better protection. ²
Steer Assist 3D	Automatically follow guidance lines from site design plans (or Infield designs) under light load or heavy load. ²
Dedicated Touchscreen Grade Display	Full-color Grade operator interface is intuitive and easier to use. The 254 mm (10 in) touchscreen uses an Android OS platform and operates like a smart phone.

Remote Control/Cat Command

Remote Control Ready Cab (Optional)	Cab is Remote Control Ready from the factory with external connector for dealer installation of the Cat Command remote control system.
Command for Dozing ² (Optional)	Cat Command remote control technology provides full dozer maneuverability from a safe distance when working in hazardous environments. Command offers the choice of line-of-sight consoles or long-distance operator stations (non-line-of-sight).

¹Feature not operational indoors or in areas where a GPS signal is not available.

²Requires Software Enabled Attachment (SEA) installation when not configured from the factory.

Note: Grade and Assist technologies, except Slope Indicate, Blade Load Monitor and Traction Control, are not compatible with Angle blades or specialty blades from Cat Work Tools. Please consult with your Cat dealer for details.

D5 Heavy Duty/Forestry Standard and Optional Equipment

Standard and Optional Equipment

Standard and optional equipment may vary. Consult your Cat dealer for details.

	Standard	Optional		Standard	Optional
POWER TRAIN			OPERATOR ENVIRONMENT		
Cat C7.1 diesel engine	✓		Premium, Heavy Duty/Forestry cab with impact resistant polycarbonate doors, sliding side windows and adjustable armrests	+	
Fully-automatic 3-speed transmission:	✓		Full-color 10-inch (254 mm) liquid crystal touchscreen display	✓	
– Automatic directional and downshift			Integrated rearview camera	✓	
– Controlled throttle, load compensated			In-display key machine features	✓	
– Infinite ground speed adjustment			Application Profile	✓	
– Programmable/selectable bi-directional shifting			Cloth seat	✓	
Air-to-air aftercooler (ATAAC)	✓		Deluxe leather heated/ventilated seat		✓
Aluminum bar plate radiator	✓		Electrohydraulic implement and steering controls	✓	
Automatic glowplugs	✓		Joystick control	✓	
Differential steering	✓		Joystick control – ARO		✓
Engine air precleaner	✓		Fresh air filter	✓	
Engine air precleaner with turbine/screen		*	Powered fresh air filter precleaner		✓
Engine idle shutdown		✓	Cab mounted modular Heating/Ventilation/Air Conditioning (HVAC) system	✓	
Enhanced Power Train Control:	✓		Rearview mirror	✓	
– Hill Decent Control			Retractable 76 mm (3 in) seatbelt	✓	
– Hill Hold			Grab rails/tie offs on both sides of cab roof	✓	
– Decel Brake Pedal			Communication radio ready		✓
– Steering Radius Control			Radio, AM/FM/Aux/USB/Bluetooth		✓
Extended life coolant	✓		Added storage areas	✓	
Ether starting aid		✓	Cup holders	✓	
Final Drives – Standard or LGP		✓	Dash foot pads	✓	
Final Drives – Arctic	✓		Glove box		✓
Fuel priming pump	✓		Lunchbox storage	✓	
Fuel water separator	✓		Wipers	✓	
Fuel line heater		✓			
Hydraulic demand fan	✓				
Hydraulic reversing fan		✓			
Sound suppression (Brazil only)		✓			
Debris resistant radiator cores		✓			

*Recommended

(continued on next page)

D5 Heavy Duty/Forestry Standard and Optional Equipment

Standard and Optional Equipment *(continued)*

Standard and optional equipment may vary. Consult your Cat dealer for details.

	Standard	Optional		Standard	Optional
GUARDING AND SCREENS			ELECTRICAL		
Front and cab sweeps with canopy	+		12 premium LED lights with guarding	+	
Side and rear hinged screens	+		Backup alarm	✓	
Heavy duty guarding package with heavy duty bottom guards and fuel tank guard	+		Beacon warning light		✓
Fuel tank cover guard	+		Converter: one 15 Amp, 12V outlet	✓	
UNDERCARRIAGE			SERVICE AND MAINTENANCE		
Standard or Low Ground Pressure (LGP) undercarriage	✓		30-minute cab removal		✓
Heavy Duty (HDXL with DuraLink™)		*	Adjustable pitch link (VPAT)	✓	
Cat Abrasion Undercarriage		✓	Centralized, remote mounted pressure taps	✓	
Carrier rollers	✓		Ecology drains		✓
Hydraulic track adjusters	✓		Extended service intervals (500 hours engine, 1,000 hours power train)	✓	
Lifetime lubricated track and rollers	✓		Fast fuel fill		✓
Moderate service track shoes (see chart on page 39)	✓		Ground level service center (remote electrical disconnect, secondary shutdown switch, optional hour meter)	✓	
Extreme service track shoes (see chart on page 39)		✓	High-speed oil change		✓
Redesigned track roller frame	✓		Heavy duty perforated radiator doors, louvered and hinged	✓	
Track roller frame guiding guards: center, partial or full (NOTE: center guiding guards standard on LGP machine)		✓	Rear access ladder	✓	
BULLDOZERS			Rear work light		
Heavy duty bulldozer package with guarding on lift and tilt lines		✓	Removable engine enclosures, perforated and hinged	✓	
VPAT dozer package	✓		S-O-S SM sampling ports	✓	
SU dozer package		✓	Shovel holder	✓	
BLADES			Under hood work light		
VPAT		✓			✓
Semi-Universal		✓			
Foldable VPAT		✓			
VPAT with brush guard		✓			
HYDRAULICS					
Load sensing hydraulics	✓				
Independent steering and implement pumps	✓				

(continued on next page)

+Included in Forestry Package

*Recommended

D5 Heavy Duty/Forestry Standard and Optional Equipment

Standard and Optional Equipment *(continued)*

Standard and optional equipment may vary. Consult your Cat dealer for details.

	Standard	Optional		Standard	Optional
BATTERIES, STARTERS, ALTERNATORS AND COOLANT			CAT TECHNOLOGY		
95 Amp alternator	✓		Slope Indicate	✓	
24 Volt starter	✓		ARO with Assist Package		✓
Arctic engine coolant, -51° C (-60° F)		✓	- ARO		
Engine coolant, -37° C (-35° F)	✓		- Slope Assist		
Cold Weather package: heavy duty battery, heavy duty starter, ether starting aid, jacket water heater		✓	- Steer Assist		
Two maintenance free 12-volt batteries (950 cca) (24-volt system)	✓		- Stable Blade		
ATTACHMENTS			- Blade Load Monitor		
Ripper-ready rear hydraulics		✓	- Traction Control		
Dual ripper/winch control		✓	- AutoCarry		
Ripper with straight or curved shanks		✓	Grade 3D with Assist Package		✓
Winch:		✓	- Full-color 10-inch (254 mm) touchscreen grade display		
- PACCAR PA55, low speed PTO			- Steer Assist 3D		
- PACCAR PA55, standard speed PTO			- Grade receivers and antennas		
- Fairlead Assembly; 3-roller, fits PA55 winches			- Grade Software Enabled Attachment (SEA)		
- Retrofit kit (4th roller); fits PA55 winches			- ARO with Assist package features		
Drawbar		✓	Compatibility with radios and base stations from Trimble, Topcon, and Leica	✓	
Rear striker box with striker bar		✓	Capability to install 3D grade systems from Trimble, Topcon, and Leica	✓	
			Product Link, Cellular	✓	
			Product Link - Dual Cellular/Satellite		✓
			Remote Flash/Troubleshoot	✓	
			Grade Connectivity		✓
			Operator ID		✓
			Machine Security - Passcode	✓	
			Machine Security - Bluetooth		✓
			Remote Control Ready cab		✓
			Cat Command for Dozing		✓



For more complete information on Cat products, dealer services, and industry solutions, visit us on the web at www.cat.com

© 2023 Caterpillar
All rights reserved

Materials and specifications are subject to change without notice. Featured machines in photos may include additional equipment. See your Cat dealer for available options.

CAT, CATERPILLAR, LET'S DO THE WORK, their respective logos, "Caterpillar Corporate Yellow," the "Power Edge" and Cat "Modern Hex" trade dress as well as corporate and product identity used herein, are trademarks of Caterpillar and may not be used without permission.

AEXQ2553-03 (02-2023)
Replaces AEXQ2553-02
Build Number: 17B
(Afr-ME, APD, Aus-NZ, Eurasia,
Hong Kong, India, Indonesia,
S Am, Taiwan, Thailand)

