



D5

Track-Type Tractor

Technical Specifications

Configurations and features may vary by region. Please consult your Cat® dealer for availability in your area.

Table of Contents

D5 Track-Type Tractor

- Specifications 3**
- Engine 3
- Air Conditioning System 3
- Fluid/Refill Capacities 3
- Transmission 3
- Drawbar Pull 4
- Hydraulic Controls – Pressures 4
- Hydraulic Controls – Pump 4
- D5 VPAT 5
 - Blades 5
- D5 LGP VPAT 6
 - Blades 6
- D5 VPAT Fine Grading 7
 - Blades 7
- D5 SU 8
 - Blade 8

- D5 Super LGP 9
 - Blade 9
- D5 Fine Grading Arrangement 10
- D5 Super LGP 10
- Track Shoes 11
- Dimensions – Rear Attachments 12
- Ripper 12
- Winch 13
- Standards 14
- Sound Level Information 14
- Vibration Levels 14
- Advanced Cabin Filtration 14
- Dozer Technology Features 15
- Standard and Optional Equipment 16**
- Environmental Declaration 19**

(continued on next page)



D5 Track-Type Tractor Table of Contents

Table of Contents *(continued)*

D5 Track Type Tractor – Waste Handler

Key Features and Benefits	20
Specifications	21
Engine	21
Air Conditioning System	21
Fluid/Refill Capacities	21
Transmission	21
Drawbar Pull	22
Hydraulic Controls – Pressures	22
Hydraulic Controls – Pump	22
D5 Waste Handler – LGP VPAT	23
Blade	23
D5 Waste Handler – VPAT	24
Blade	24

D5 Waste Handler – SU	25
Blade	25
D5 Waste Handler Features	26
Track Shoes	27
Dimensions – Rear Attachments	27
Ripper	27
Winch	28
Standards	29
Sound Level Information	29
Vibration Levels	29
Advanced Cabin Filtration	29
Dozer Technology Features	30

Standard and Optional Equipment

31

D5 Track-Type Tractor – Heavy Duty/Forestry

Key Features and Benefits	34
Specifications	35
Engine	35
Air Conditioning System	35
Fluid/Refill Capacities	35
Transmission	35
Drawbar Pull	36
Hydraulic Controls – Pressures	36
Hydraulic Controls – Pump	36
D5 VPAT – Heavy Duty/Forestry	37
Blade	37

D5 SU – Heavy Duty/Forestry	38
Blade	38
D5 Heavy Duty/Forestry Features	39
Track Shoes	40
Dimensions – Rear Attachments	41
Ripper	41
Winch	42
Standards	43
Sound Level Information	43
Vibration Levels	43
Advanced Cabin Filtration	43
Dozer Technology Features	44

Standard and Optional Equipment

45

D5 Track-Type Tractor – Fire Suppression Dozer

Key Features and Benefits	48
Specifications	49
Engine	49
Air Conditioning System	49
Fluid/Refill Capacities	49
Transmission	49
Drawbar Pull	50
Hydraulic Controls – Pressures	50
Hydraulic Controls – Pump	50
D5 LGP VPAT – Fire Suppression	51
Blade	51

D5 VPAT – Fire Suppression	52
Blade	53
D5 Fire Suppression Dozer Features	54
Track Shoes	55
Dimensions – Rear Attachments	56
Ripper	56
Winch	57
Standards	58
Sound Level Information	58
Vibration Levels	58
Advanced Cabin Filtration	58
Dozer Technology Features	59

Standard and Optional Equipment

60

D5 Track-Type Tractor Specifications

Engine

Engine Model	Cat® C7.1	
Emissions	U.S. EPA Tier 4 Final/ EU Stage V/Japan 2014/ Korea Tier 5	
Power Train	Fully automatic 3-speed	
Net Power (1,770 rpm)		
ISO 9249/SAE J1349	127 kW	170 hp
ISO 9249 (DIN)	172 mhp	
Engine Power – Maximum (1,600 rpm)		
ISO 14396	148 kW	198 hp
ISO 14396 (DIN)	201 mhp	
Gross Power – Maximum (1,600 rpm)		
SAE J1995	151 kW	202 hp
Bore	105 mm	4.1 in
Stroke	135 mm	5.3 in
Displacement	7.1 L	433 in ³

- Net power advertised is the power available at the engine flywheel when the engine is equipped with a fan, air cleaner, clean emissions module and alternator.
- Advertised power is tested per the specified standard in effect at the time of manufacture.
- No derating required up to 3000 m (9,840 ft) altitude, beyond 3000 m (9,840 ft) automatic derating occurs.
- Cat diesel engines are required to use ULSD (ultra-low sulfur diesel fuel with 15 ppm of sulfur or less) or ULSD blended with the following lower-carbon intensity fuels up to:
 - ✓ 20% biodiesel FAME (fatty acid methyl ester)*
 - ✓ 100% renewable diesel, HVO (hydrogenated vegetable oil) and GTL (gas-to-liquid) fuels

Refer to guidelines for successful application. Please consult your Cat dealer or “Caterpillar Machine Fluids Recommendations” (SEBU6250) for details.

**Engines with no aftertreatment devices can use higher blends, up to 30% biodiesel.*

Air Conditioning System

The air conditioning system on this machine contains the fluorinated greenhouse gas refrigerant R134a (Global Warming Potential = 1430). The system contains 1.36 kg of refrigerant which has a CO₂ equivalent of 1.946 metric tonnes.

Fluid/Refill Capacities

Fuel Tank	315 L	83.2 gal
Diesel Exhaust Fluid (DEF) Tank	16 L	4.2 gal
Cooling System	41 L	10.8 gal
Engine Crankcase	18 L	4.8 gal
Power Train	160 L	42.3 gal
Roller Frames Standard/LGP (each)	18/27 L	4.8/7.1 gal
Final Drives (each)	8 L	2.1 gal
Hydraulic System	80 L	21.1 gal

Transmission

0.5 Forward	2.5 km/h (2.4 km/h)	1.6 mph (1.5 mph)
1.0 Forward	3.3 km/h (3.0 km/h)	2.1 mph (1.9 mph)
1.5 Forward	4.4 km/h	2.7 mph
2.0 Forward	5.8 km/h	3.6 mph
2.5 Forward	7.5 km/h	4.7 mph
3.0 Forward	9.8 km/h	6.1 mph
0.5 Reverse	3.1 km/h (2.9 km/h)	1.9 mph (1.8 mph)
1.0 Reverse	4.1 km/h (3.5 km/h)	2.5 mph (2.2 mph)
1.5 Reverse	5.4 km/h	3.4 mph
2.0 Reverse	7.1 km/h	4.4 mph
2.5 Reverse	9.5 km/h	5.9 mph
3.0 Reverse	12.2 km/h	7.6 mph

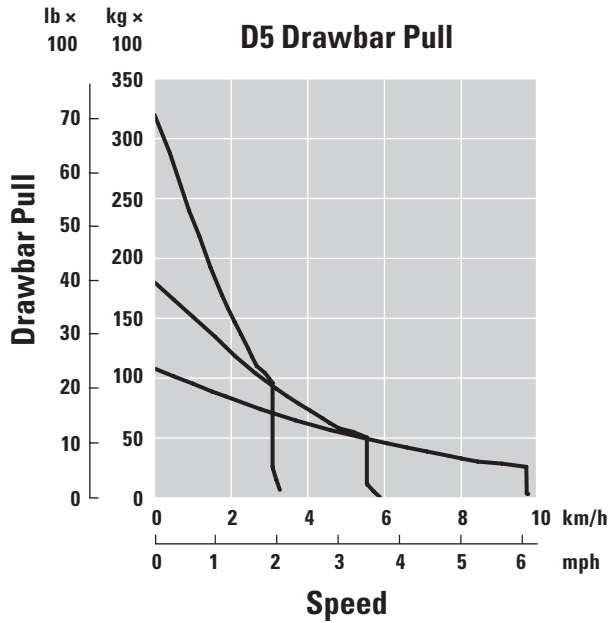
Maximum Drawbar Pull

1.0 Forward	320 kN	71,939 lbf
2.0 Forward	198 kN	44,512 lbf
3.0 Forward	113 kN	25,403 lbf

NOTE: Data between brackets are values for EU.

D5 Track-Type Tractor Specifications

Drawbar Pull



Hydraulic Controls – Pressures

Maximum Implement Operating Pressure	25 000 kPa	3,626 psi
Maximum Steering Operating Pressure	45 000 kPa	6,527 psi

Hydraulic Controls – Pump

Pump Output		
Implement	127 L/min	33.5 gal/min
Steering	165 L/min	43.5 gal/min
Fan	49 L/min	12.9 gal/min
Lift Cylinder Flow	127 L/min	33.5 gal/min
Tilt Cylinder Flow	127 L/min	33.5 gal/min
Ripper Cylinder Flow	127 L/min	33.5 gal/min
Angle Cylinder Flow – VPAT	127 L/min	33.5 gal/min

D5 Track-Type Tractor Specifications

D5 VPAT

Operating Weight*	17 180 kg	37,875 lb
Shipping Weight**	16 950 kg	37,368 lb
Ground Pressure (ISO 16754)	47.6 kPa	6.9 psi
Undercarriage (Standard)	40 Section/ 7 Bottom Rollers	
1 Track Gauge	1890 mm	74.4 in
2 Width of Track Shoe (Standard)	610 mm	24 in
3 Width of Tractor	2500 mm	98.4 in
4 Length of Track on Ground	2562 mm	100.9 in
Ground Contact Area (ISO 16754)	3.5 m ²	5,469 in ²
Grouser Height (Moderate Service)	57 mm	2.2 in
Ground Clearance	358 mm	14.1 in
5 Machine Height***	3085 mm	121.5 in
6 Length of Basic Tractor****	4644 mm	182.8 in

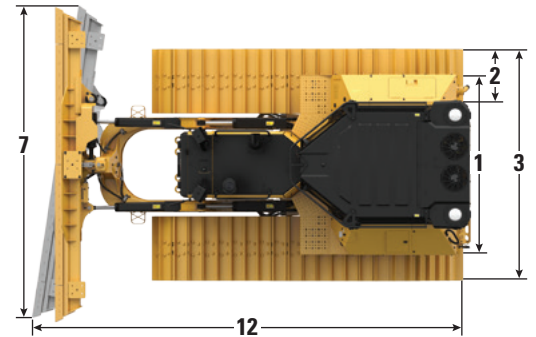
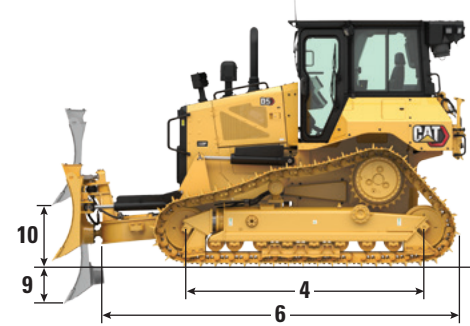
All dimensions above with Cat Abrasion™ undercarriage with Extreme Service shoes of maximum width for configuration, VPAT blade, and calculated per ISO 16754 unless otherwise specified.

*Operating weight includes blade, lubricants, coolant, full fuel tank, ROPS/FOPS cab, drawbar, and 75 kg (165 lb) operator.

**Shipping weight includes blade lift cylinders, C-frame, lubricants, coolant, 10% fuel, ROPS/FOPS cab, and drawbar.

***Machine height from tip of grouser to top of Product Link™ Antenna. For sweeps, add 64 mm (2.5 in) to overall machine height. For forestry sweeps, add 81 mm (3.2 in). With Extreme Service, add 9 mm (0.4 in). When Cat Grade with 3D antennas are installed there is no added machine height.

****Length of Basic Tractor from the back of the drawbar to front of C-frame.



LGP VPAT Model Shown

Blades

Configuration	VPAT		VPAT – Foldable	
Capacity (ISO 9246)	3.5 m ³	4.6 yd ³	3.5 m ³	4.6 yd ³
7 Width across End Bits	3272 mm	10.7 ft	3272 mm	10.7 ft
Width without End Bits	3159 mm	10.4 ft	3159 mm	10.4 ft
Width across End Bits (Blade Angled 24°)	2998 mm	118.0 in	2558 mm	100.7 in
Width without End Bits (Blade Angled 24°)	2908 mm	114.5 in	2539 mm	97.0 in
Maximum Blade Angle	24°		24°	
8 Height	1261 mm	49.6 in	1261 mm	49.6 in
9 Dig Depth	559 mm	22.0 in	559 mm	22.0 in
10 Lift Height	971 mm	38.2 in	971 mm	38.2 in
11 Maximum Tilt at Blade Corner	257 mm	10.1 in	257 mm	10.1 in
Maximum Tilt Angle	8.5°		8.5°	
Pitch Adjustment	60° (cutting edge/ground, nominal); -2°/+4°		60° (cutting edge/ground, nominal); -2°/+4°	
12 Length of Machine (Blade Straight)	5000 mm	197 in	5016 mm	197 in
Length of Machine (Blade Angled 24°, without fuel tank guard)	5621 mm	221 in	5621 mm	221 in
Blade Weight	1090 kg	2,403 lb	1286 kg	2,835 lb

D5 Track-Type Tractor Specifications

D5 LGP VPAT

Operating Weight*	19 170 kg	42,263 lb
Shipping Weight**	18 940 kg	41,756 lb
Ground Pressure (ISO 16754)	32.6 kPa	4.7 psi
Undercarriage (Standard)	46 Section/ 8 Bottom Rollers	
1 Track Gauge	2160 mm	85.0 in
2 Width of Track Shoe (Standard)	840 mm	33 in
3 Width of Tractor	3000 mm	118.1 in
4 Length of Track on Ground	3116 mm	122.7 in
Ground Contact Area (ISO 16754)	5.8 m ²	8,995 in ²
Grouser Height (Moderate Service)	57 mm	2.2 in
Ground Clearance	473 mm	18.6 in
5 Machine Height***	3200 mm	126.0 in
6 Length of Basic Tractor****	5012 mm	197.3 in

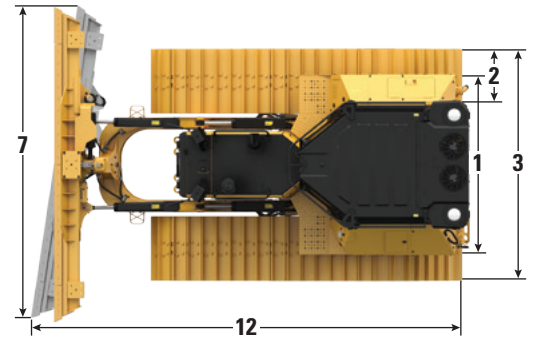
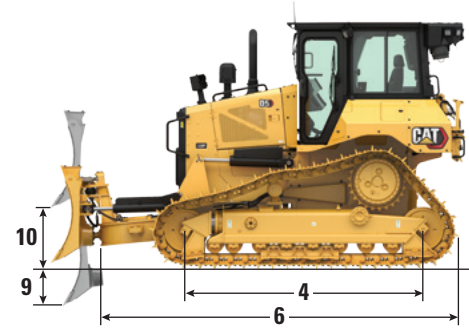
All dimensions above with Cat Abrasion undercarriage with Extreme Service shoes of maximum width for configuration, VPAT blade, and calculated per ISO 16754 unless otherwise specified.

*Operating weight includes blade, lubricants, coolant, full fuel tank, ROPS/FOPS cab, drawbar, and 75 kg (165 lb) operator.

**Shipping weight includes blade lift cylinders, C-frame, lubricants, coolant, 10% fuel, ROPS/FOPS cab, and drawbar.

***Machine height from tip of grouser to top of Product Link Antenna. For sweeps, add 64 mm (2.5 in) to overall machine height. For forestry sweeps, add 81 mm (3.2 in). With Extreme Service, add 9 mm (0.4 in). When Cat Grade with 3D antennas are installed there is no added machine height.

****Length of Basic Tractor from the back of the drawbar to front of C-frame.



Blades

Configuration	LGP VPAT		LGP VPAT – Foldable	
Capacity (ISO 9246)	4.0 m ³	5.2 yd ³	4.2 m ³	5.5 yd ³
7 Width across End Bits	4080 mm	13.4 ft	4080 mm	13.4 ft
Width without End Bits	3969 mm	156.3 in	3969 mm	156.3 in
Width across End Bits (Blade Angled 24°)	3736 mm	147.1 in	3736 mm	147.1 in
Width without End Bits (Blade Angled 24°)	3640 mm	143.3 in	3640 mm	143.3 in
Width across End Bits (Blade Angled 33° for transportation purpose only)	—	—	3000 mm	118.1 in
Maximum Blade Angle	24°		24°	
8 Height	1263 mm	49.7 in	1263 mm	49.7 in
9 Dig Depth	580 mm	22.8 in	580 mm	22.8 in
10 Lift Height	1051 mm	41.4 in	1051 mm	41.4 in
11 Maximum Tilt at Blade Corner	371 mm	14.6 in	371 mm	14.6 in
Maximum Tilt Angle	8.5°		8.5°	
Pitch Adjustment	60° (cutting edge/ground, nominal); -2°/+4°		60° (cutting edge/ground, nominal); -2°/+4°	
12 Length of Machine (Blade Straight)	5350 mm	211 in	5350 mm	211 in
Length of Machine (Blade Angled 24°, without fuel tank guard)	6137 mm	242 in	6027 mm	237 in
VPAT Blade foldable, angled 33° for transportation purpose only	—	—	6377 mm	251 in
Weight (Blade)	1256 kg	2,769 lb	1526 kg	3,364 lb

D5 Track-Type Tractor Specifications

D5 VPAT Fine Grading

Operating Weight*	17 780 kg	39,198 lb
Shipping Weight**	17 550 kg	38,691 lb
Ground Pressure (ISO 16754)	41.4 kPa	6.0 psi
Undercarriage (Standard)	46 Section/ 8 Bottom Rollers	
1 Track Gauge	1890 mm	74.4 in
2 Width of Track Shoe (Standard)	610 mm	24 in
3 Width of Tractor	2500 mm	98.4 in
4 Length of Track on Ground	3116 mm	122.7 in
Ground Contact Area (ISO 16754)	4.2 m ²	6,525 in ²
Grouser Height (Moderate Service)	57 mm	2.2 in
Ground Clearance	473 mm	18.6 in
5 Machine Height***	3200 mm	126.0 in
6 Length of Basic Tractor****	5012 mm	197.3 in

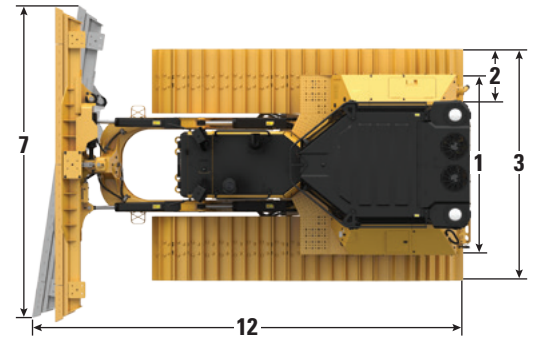
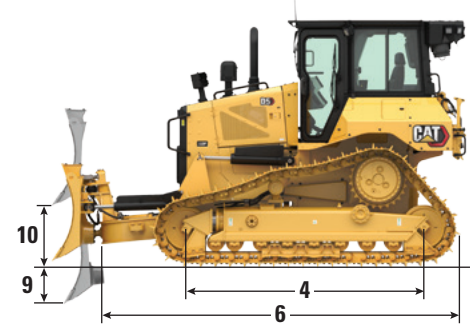
All dimensions above with Cat Abrasion undercarriage with Extreme Service shoes of maximum width for configuration, VPAT blade, and calculated per ISO 16754 unless otherwise specified.

*Operating weight includes blade, lubricants, coolant, full fuel tank, ROPS/FOPS cab, drawbar, and 75 kg (165 lb) operator.

**Shipping weight includes blade lift cylinders, C-frame, lubricants, coolant, 10% fuel, ROPS/FOPS cab, and drawbar.

***Machine height from tip of grouser to top of Product Link Antenna. For sweeps, add 64 mm (2.5 in) to overall machine height. For forestry sweeps, add 81 mm (3.2 in). With Extreme Service, add 9 mm (0.4 in). When Cat Grade with 3D antennas are installed there is no added machine height.

****Length of Basic Tractor from the back of the drawbar to front of C-frame.



LGP VPAT Model Shown

Blades

Configuration	VPAT		VPAT – Foldable	
Capacity (ISO 9246)	3.5 m ³	4.6 yd ³	3.5 m ³	4.6 yd ³
7 Width across End Bits	3272 mm	10.7 ft	3272 mm	10.7 ft
Width without End Bits	3159 mm	10.4 ft	3159 mm	10.4 ft
Width across End Bits (Blade Angled 24°)	2998 mm	118.0 in	2558 mm	100.7 in
Width without End Bits (Blade Angled 24°)	2908 mm	114.5 in	2539 mm	97.0 in
Maximum Blade Angle	24°		24°	
8 Height	1261 mm	49.6 in	1261 mm	49.6 in
9 Dig Depth	580 mm	22.8 in	580 mm	22.8 in
10 Lift Height	1051 mm	41.4 in	1051 mm	41.4 in
11 Maximum Tilt at Blade Corner	257 mm	10.1 in	257 mm	10.1 in
Maximum Tilt Angle	8.5°		8.5°	
Pitch Adjustment	60° (cutting edge/ground, nominal); -2°/+4°		60° (cutting edge/ground, nominal); -2°/+4°	
12 Length of Machine (Blade Straight)	5350 mm	211 in	5350 mm	211 in
Length of Machine (Blade Angled 24°, without fuel tank guard)	5969 mm	235 in	5969 mm	235 in
Weight (Blade)	1090 kg	2,403 lb	1286 kg	2,835 lb

D5 Track-Type Tractor Specifications

D5 SU

Operating Weight*	17 340 kg	38,228 lb
Shipping Weight**	17 110 kg	37,721 lb
Ground Pressure (ISO 16754)	48.2 kPa	7.0 psi
Undercarriage	40 Section/ 7 Bottom Rollers	
1 Track Gauge	1890 mm	74.4 in
2 Width of Track Shoe (Standard)	610 mm	24 in
3 Width of Tractor (without trunnions)	2500 mm	98.4 in
4 Length of Track on Ground	2562 mm	100.9 in
Ground Contact Area (ISO 16754)	3.5 m ²	5,469 in ²
Grouser Height (Moderate Service)	57 mm	2.5 in
Ground Clearance	358 mm	14.1 in
5 Machine Height***	3085 mm	121.5 in
6 Length of Basic Tractor****	3990 mm	157.1 in

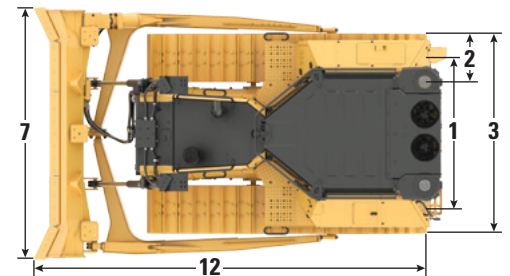
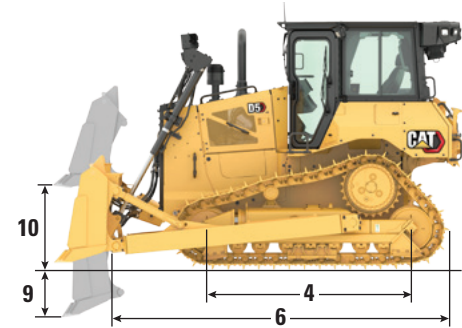
All dimensions above with Cat Abrasion undercarriage with Moderate Service shoes of maximum width for configuration, SU blade, and calculated per ISO 16754 unless otherwise specified.

*Operating weight includes blade, lubricants, coolant, full fuel tank, ROPS/FOPS cab, drawbar, and 75 kg (165 lb) operator.

**Shipping weight includes blade lift cylinders, C-frame, lubricants, coolant, 10% fuel, ROPS/FOPS cab, and drawbar.

***Machine height from tip of grouser to top of Product Link Antenna. For sweeps, add 64 mm (2.5 in) to overall machine height. For forestry sweeps, add 81 mm (3.2 in). With Extreme Service, add 9 mm (0.4 in). When Cat Grade with 3D antennas are installed there is no added machine height.

****Length of Basic Tractor from the back of the drawbar to the tip of lift cylinder.



Blade

Configuration	SU	
Capacity (ISO 9246)	4.3 m ³	5.6 yd ³
7 Width across End Bits	3164 mm	10.4 ft
Width without End Bits	3122 mm	10.2 in
8 Height	1338 mm	52.7 in
9 Dig Depth	544 mm	21.4 in
10 Lift Height	1104 mm	43.4 in
11 Maximum Tilt at Blade Corner	140 mm	5.5 in
Maximum Tilt Angle	8°	
Pitch Adjustment	±5.1°	
12 Length of Machine with SU Blade (without fuel tank guard)	5087 mm	200 in
Blade Weight (blade + push arms installed)	2050 kg	4,520 lb

D5 Track-Type Tractor Specifications

D5 Super LGP

Operating Weight*	21 630 kg	47,686 lb
Shipping Weight**	21 400 kg	47,179 lb
Ground Pressure (ISO 16754)	24.8 kPa	3.48 psi
Undercarriage	52 Section/ 9 Bottom Rollers	
1 Track Gauge	2365 mm	93.11 in
2 Width of Track Shoe (Standard)	1070 mm	42 in
3 Width of Tractor (without trunnions)	3435 mm	135.24 in
4 Length of Track on Ground	3695 mm	145.47 in
Ground Contact Area (ISO 16754)	8.56 m ²	13,268 in ²
Grouser Height (Double Grouser shoe)	35 mm	1.38 in
Ground Clearance	469 mm	18.46 in
5 Machine Height***	3168 mm	124.72 in
6 Length of Basic Tractor****	4804 mm	189.1 in

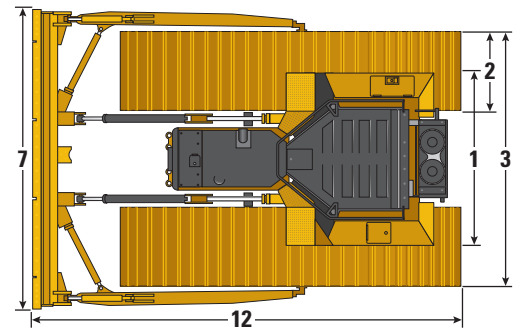
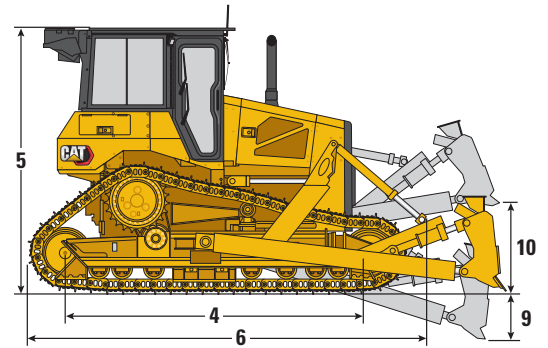
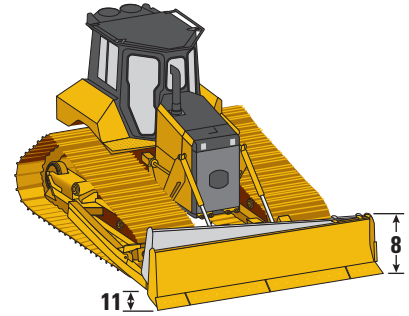
All dimensions above with Cat Abrasion undercarriage with Moderate Service shoes of maximum width for configuration, SU blade, and calculated per ISO 16754 unless otherwise specified.

*Operating weight includes blade, lubricants, coolant, full fuel tank, ROPS/FOPS cab, drawbar, DG shoes, STD batteries and 75 kg (165 lb) operator. With APEX shoes, remove 1450 kg (3197 lb).

**Shipping weight includes blade lift cylinders, lubricants, coolant, 10% fuel, ROPS/FOPS cab, drawbar, push arms and blade.

***Machine height from tip of grouser (Double Grouser shoes) to top of Product Link Antenna. With APEX shoes, add 42 mm (1.65 in).

****Length of Basic Tractor from the rear track shoe to the tip of lift cylinder Blades (shipping).



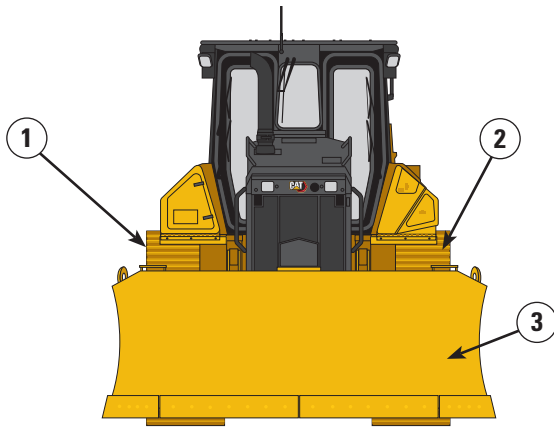
Blade

Configuration	Straight Blade	
Capacity (ISO 9246)	2.7 m ³	3.5 yd ³
7 Width across End Bits	4027 mm	13.2 ft
Width without End Bits	3980 mm	13.1 ft
8 Height	900 mm	35.4 in
9 Dig Depth	541 mm	21.3 in
10 Lift Height	996 mm	39.2 in
11 Maximum Tilt at Blade Corner	209 mm	11.1 in
Maximum Tilt Angle	6°	
Pitch Adjustment	±8°	
12 Length of Machine with SU Blade	5768 mm	227.1 in
Blade Weight (blade and push arms, tilt lines and cylinders, covers and trunnions)	1940 kg	4,277 lb

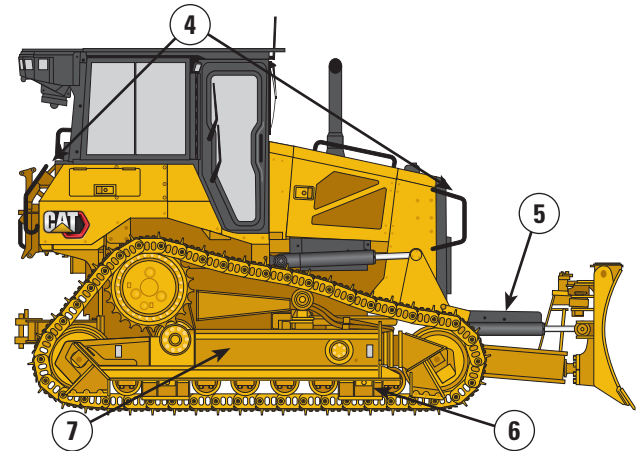
D5 Track-Type Tractor Specifications

D5 Fine Grading Arrangement

The Fine Grading arrangement combines the features of a standard VPAT dozer with the longer undercarriage of an LGP machine. The result is a narrow transport width, without giving up low ground pressure. Machine stability and maneuverability are optimal. A folding blade is available to make transport even easier. See page 7 for specifications and dimensions.



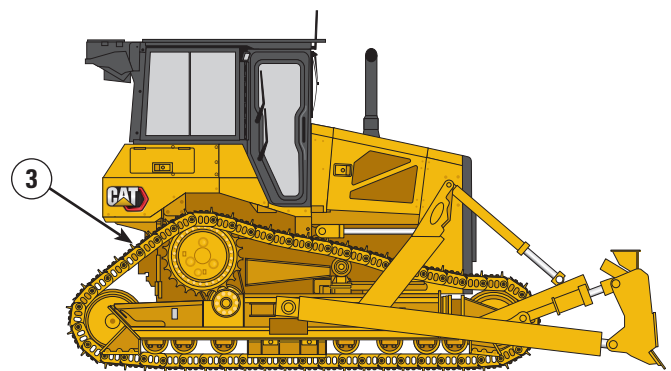
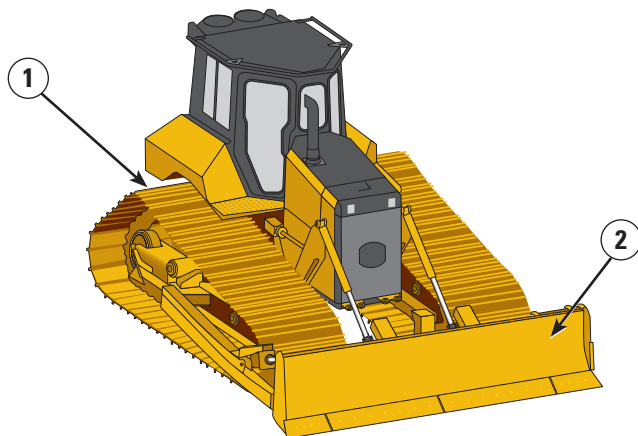
- 1) D5 VPAT Tractor – 1890 mm (74 in) gauge
- 2) Fine grading tracks – narrow shoes, 610 mm (24 in). 46 sections
- 3) 3272 mm (10.7 ft) VPAT blade or Foldable VPAT blade for shipping width under 3 m (9.85 ft)



- 4) LGP Access Package (front handles/rear ladder)
- 5) LGP bulldozer (long C-frame)
- 6) Fine grading undercarriage:
 - 1890 mm (74.4 in)
 - 8-roller track roller frame
- 7) LGP compatible track guiding guards

D5 Super LGP

The Super LGP has a long history working in applications like agriculture and dredging, which require very low ground pressure combined with high drawbar pull. The Super LGP package equips the machine specifically for very soft underfoot conditions. See page 9 for specifications and dimensions.



- 1) Super LGP undercarriage:
 - Track roller frame extended with nine rollers at front and rear for more track on the ground and better mass distribution
 - Center track guiding guard
 - Enlarged equalizer bar and pivot shafts
 - Heavy Duty Extended Life (HDXL) tracks equipped with 1070 mm (42 in) wide track pads either double grousers or self-cleaning.
- 2) Super LGP Bulldozer package:
 - Combines a VPAT lift cylinder system and push arms for optimized tractor mass
 - 4027 mm (13.2 ft) Straight blade
- 3) Rear guard – regular or heavy duty

D5 Track-Type Tractor Specifications

Track Shoes

Some track shoes not available in all regions. Please consult your Cat dealer for details.

Standard			
560 mm (22 in)	Heavy Duty Extended Life (HDXL)	Moderate Service	
560 mm (22 in)	HDXL	Extreme Service	
560 mm (22 in)	HDXL	Extreme Service	Fire Dozer
560 mm (22 in)	Cat Abrasion	Extreme Service	
600 mm (24 in)	HDXL	Moderate Service	
600 mm (24 in)	HDXL	Moderate Service	Fine Grading
600 mm (24 in)	HDXL	Extreme Service	
600 mm (24 in)	HDXL	Extreme Service	Center Hole
610 mm (24 in)	Cat Abrasion	Moderate Service	Fine Grading
610 mm (24 in)	Cat Abrasion	Extreme Service	
610 mm (24 in)	Cat Abrasion	Extreme Service	Center Hole
LGP			
840 mm (33 in)	HDXL	Extreme Service	
840 mm (33 in)	HDXL	Extreme Service	Center Hole
840 mm (33 in)	Cat Abrasion	Moderate Service	
840 mm (33 in)	Cat Abrasion	Extreme Service	
860 mm (34 in)	HDXL	Extreme Service	
860 mm (34 in)	HDXL	Self-Cleaning	
860 mm (34 in)	Cat Abrasion	Extreme Service	
Super LGP			
1070 mm (42 in)	HDXL	Moderate Service	
1070 mm (42 in)	HDXL	Self-Cleaning	

D5 Track-Type Tractor Specifications

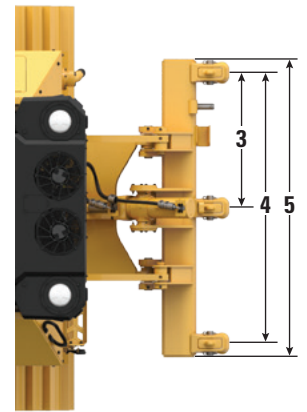
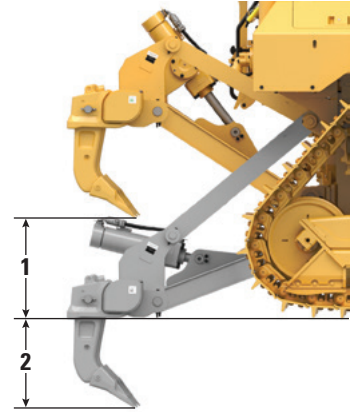
Dimensions – Rear Attachments

Add the following to the total length of the machine when these rear attachments are installed.

D5	Drawbar		Winch		Ripper		Striker Box	
Push Arm and VPAT Dozers	16 mm	0.6 in	446 mm	17.6 in	1060 mm	41.7 in	152 mm	6 in

Ripper

Type	Fixed Parallelogram	
Weight with Three Shanks	1393 kg	3,071 lb
1 Maximum Clearance, Raised (Shank Tip)		
D5 VPAT/Push Arms	404 mm	15.9 in
D5 LGP VPAT	518 mm	20.4 in
2 Maximum Penetration		
Standard	552 mm	21.7 in
LGP	437 mm	17.2 in
3 Pocket Spacing	1000 mm	3 ft 3.4 in
4 Shank Gauge	2 m	6 ft 7 in
Shank Section	73 mm × 176 mm	2.9 in × 6.9 in
Number of Pockets	3	
5 Overall Beam Width	2202 mm	86.7 in
Beam Cross Section	219 mm × 254 mm	8.6 in × 10.0 in
Maximum Penetration Force		
Standard	51.6 kN	11,600 lbf
LGP	43 kN	9,667 lbf
Maximum Pryout Force		
Standard	211.2 kN	47,480 lbf
LGP	170 kN	38,217 lbf



D5 Track-Type Tractor Specifications

Winch

Winch Model	PA55 Standard Speed	
Weight*	1277 kg	2,815 lb
Oil Capacity	73 L	19.3 gal
Winch and Bracket Length	1145 mm	45.1 in
Winch Case Width	975 mm	38.4 in
Drum Diameter	254 mm	10 in
Drum Width	315 mm	12.4 in
Flange Diameter	504 mm	19.8 in
Drum Capacity – 22 mm (0.88 in)	88 m	288 ft 9 in
Winch Drive	Mechanical	
Control	Electric	
Overall Width	975 mm	38.4 in
Rope Diameter (recommended)	19 mm	0.75 in
Cable Ferrule Size (O.D. × Length)	54 mm × 67 mm	2.1 in × 2.6 in
Maximum Bare Drum		
Line Pull	31 388 kg*	69,200 lb*
Line Speed	43 m/min	141 ft/min
Maximum Full Drum		
Line Pull	23 359 kg*	54,100 lb*
Line Speed	66 m/min	210 ft/min

Winch Model	PA55 Slow Speed	
Weight*	1277 kg	2,815 lb
Oil Capacity	73 L	19.3 gal
Winch and Bracket Length	1145 mm	45.1 in
Winch Case Width	975 mm	38.4 in
Drum Diameter	254 mm	10 in
Drum Width	315 mm	12.4 in
Flange Diameter	504 mm	19.8 in
Drum Capacity – 22 mm (0.88 in)	88 m	288 ft 9 in
Winch Drive	Mechanical	
Control	Electric	
Overall Width	975 mm	38.4 in
Rope Diameter (recommended)	19 mm	0.75 in
Cable Ferrule Size (O.D. × Length)	54 mm × 67 mm	2.1 in × 2.6 in
Maximum Bare Drum		
Line Pull	31 388 kg*	69,200 lb*
Line Speed	16 m/min	53 ft/min
Maximum Full Drum		
Line Pull	31 388 kg*	69,200 lb*
Line Speed	28 m/min	91 ft/min

*Weight: Includes pump, operator controls, oil, mounting brackets and spacers.

Slow and standard speed winches are available.

D5 Track-Type Tractor Specifications

Standards

ROPS/FOPS/OPS

- ROPS (Rollover Protective Structure) offered by Caterpillar for the machine meets ROPS criteria ISO 3471:2008.
- FOPS (Falling Object Protective Structure) meets ISO 3449:2005 Level II.
- OPS (Operator Protective Structure) screens meets OPS criteria per ISO 8084:2003 and WCB G604:2011.

Brakes

- Brakes meet the standard ISO 10265:2008.

Sound Level Information

Hearing protection may be needed when the machine is operated with an open operator station, in a noisy environment, with a cab that is not properly maintained, or when the doors and windows are open for extended periods of time.

Sound Level		Test Method
Operator Sound Pressure Level	76 dB(A)	"ISO 6396:2008" ⁽¹⁾
	76 dB(A)*	
Exterior Sound Power Level	110 dB(A)	"ISO 6395:2008" ⁽²⁾
	110 dB(A)*	"ISO 6395:1988" ⁽²⁾

*For machines required to meet applicable regional regulations of Ukraine, United Kingdom, and Countries that Adopt the "EU Directives."

⁽¹⁾The measurement was conducted at 70% of the maximum engine cooling fan speed. The sound level may vary at different engine cooling fan speeds. The measurement was conducted with the cab doors and the cab windows closed. The cab was properly installed and maintained.

⁽²⁾The measurement was conducted at 70% of the maximum engine cooling fan speed. The sound level may vary at different engine cooling fan speeds.

The sound levels listed above include both measurement uncertainty and uncertainty due to production variation.

Vibration Levels

Maximum Hand/Arm*	
ISO 5349:2001	2.5 m/s ²
Maximum Whole Body*	
ISO/TR25398:2006	0.5 m/s ²
Seat Transmissibility Factor	
ISO 7096:2000 – spectral class EM6	<0.7

- Values are for an experienced operator in a dozing application, consult the Operating and Maintenance Manual for further details.

Advanced Cabin Filtration

Operator Cabin

- Distributed HVAC ducting with automatic temperature control and blower speed provides ultimate operator comfort with less user input.
- Reduced maintenance of the condenser core with automatic reversing fans.
- Cat Advanced Cabin Filtration is standard.

Cat Advanced Cabin Filtration

- Operator protection from respirable particulate (0.3-10-micron size).
- Sustainably pressurized cab (U.S. Silica compliant).
- Reduced maintenance with longer life, high efficiency filters.
- Protection for all cabin components: electronics, etc.
- Helps meet U.S. Occupational Safety and Health Administration Silica Rule Table 1 requirements for operator cabs.
- Multi-tiered filter offerings for optional efficiency upgrades. Contact Cat dealer for availability.
 - MERV 16 – Standard Equipment
 - HEPA
 - Activated Carbon + HEPA
 - ABEK1 + HEPA

Dozer Technology Features

Assist technology features to help operators of varied experience levels get the job done faster and more accurately. Grade and Command offerings help further enhance your productivity, efficiency and job site safety.

The cab is Third Party Grade Control Ready, equipped with CAN interface, harness pass throughs and mounting features to make it easier to install the grade control system of your choice.

ARO with Assist Package

Attachment Ready Option (ARO)	ARO provides wiring and mounting provisions for dealer installation of Grade with 3D, AccuGrade, UTS, or other grade control systems.
Cat Grade with Slope Assist™	Slope Assist automatically maintains pre-established blade position without a GNSS/GPS signal – no additional hardware or software needed. For machines with 3D, operators can easily switch back and forth from full 3D automatics to Slope Assist.
Steer Assist	Steer Assist automates track and blade tilt steering. Helps reduce operator fatigue by automatically maintaining straight travel with light loads or heavy loads on flat ground and cross slopes. No GNSS/GPS required.
Stable Blade	Stable Blade works seamlessly with operator inputs to help produce a smoother surface when operating manually.
Slope Indicate	Slope Indicate is included in the main machine display and shows side slope and uphill/downhill grades to help operators with slope work.
Blade Load Monitor	Blade Load Monitor gives you real-time feedback on current load versus the optimal blade load based on your ground conditions. Actively monitors machine load and track slip to help you reach optimal pushing capacity. ¹
Traction Control	Traction Control automatically reduces track slip to save you time, fuel and track wear. ¹
AutoCarry™	AutoCarry automates blade lift to help you maintain consistent blade load and help reduce track slip. ¹

Grade 3D with Assist Package

Includes all features from the ARO with Assist Package listed above, plus:

Cat Grade with 3D	Factory integrated Cat Grade with 3D uses GNSS/GPS to control the blade so you can get to design plan faster. Low profile antennas are integrated into the cab roof and GNSS/GPS receivers are mounted inside the cab for better protection. ²
Steer Assist 3D	Automatically follow guidance lines from site design plans (or Infield designs) under light load or heavy load. ²
Dedicated Touchscreen Grade Display	Full-color Grade operator interface is intuitive and easier to use. The 254 mm (10 in) touchscreen uses an Android OS platform and operates like a smart phone.

Remote Control/Cat Command

Remote Control Ready Cab (Standard)	Cab is Remote Control Ready from the factory with external connector for dealer installation of the Cat Command remote control system.
Command for Dozing ² (Optional)	Cat Command remote control technology provides full dozer maneuverability from a safe distance when working in hazardous environments. Command offers the choice of line-of-sight consoles or long-distance operator stations (non-line-of-sight).

¹Feature not operational indoors or in areas where a GPS signal is not available.

²Requires Software Enabled Attachment (SEA) installation when not configured from the factory.

Note: Grade and Assist technologies, except Slope Indicate, Blade Load Monitor and Traction Control, are not compatible with Angle blades or specialty blades from Cat Work Tools. Please consult with your Cat dealer for details.

D5 Standard and Optional Equipment

Standard and Optional Equipment

Standard and optional equipment may vary. Consult your Cat dealer for details.

	Standard	Optional		Standard	Optional
POWER TRAIN			CAT TECHNOLOGY		
Cat® C7.1 diesel engine	✓		Slope Indicate	✓	
Fully-automatic 3-speed transmission:	✓		ARO with Assist Package		✓
– Automatic directional and downshift			– Attachment Ready Option (ARO)		
– Controlled throttle, load compensated			– Slope Assist		
– Infinite ground speed adjustment			– Steer Assist		
– Programmable/selectable			– Stable Blade		
– bi-directional shifting			– Blade Load Monitor		
Air-to-air aftercooler (ATAAC)	✓		– Traction Control		
Aluminum bar plate radiator	✓		– AutoCarry		
Automatic glowplugs	✓		Grade 3D with Assist Package		✓
Differential steering	✓		– Full-color 10-inch (254 mm)		
Engine air precleaner	✓		– touchscreen grade display		
Engine air precleaner with turbine/screen		✓	– Steer Assist 3D		
Engine idle shutdown	✓		– Grade receivers and antennas		
Enhanced Power Train Control:	✓		– Grade Software Enabled Attachment (SEA)		
– Hill Decent Control			– ARO with Assist package features		
– Hill Hold			Third Party Grade Control Ready Cab	✓	
– Decel Brake Pedal			Compatibility with radios and base stations from Trimble, Topcon, and Leica	✓	
– Steering Radius Control			Capability to install 3D grade systems from Trimble, Topcon, and Leica	✓	
Extended life coolant	✓		Product Link, Cellular	✓	
Ether starting aid		✓	Product Link – Dual Cellular/Satellite		✓
Final Drives – Arctic, Waste, Super LGP or Fire Dozer		✓	Remote Flash/Troubleshoot	✓	
Final Drives – Standard or LGP	✓		Grade Connectivity		✓
Fuel priming pump	✓		Operator ID	✓	
Fuel water separator	✓		Machine Security – Passcode	✓	
Hydraulic demand fan	✓		Machine Security – Bluetooth		✓
Hydraulic reversing fan		✓	Remote Control Ready	✓	
Sound suppression (EU only)		✓	Cat Command for Dozing		✓
Trash Resistant Radiator Cores		✓			

(continued on next page)

Standard and Optional Equipment *(continued)*

Standard and optional equipment may vary. Consult your Cat dealer for details.

	Standard	Optional		Standard	Optional
OPERATOR ENVIRONMENT			UNDERCARRIAGE		
Fully redesigned cab, sound suppressed, with Integrated Roll Over Protective Structure (IROPS), screen ready	✓		Standard or Low Ground Pressure (LGP) undercarriage	✓	
Full-color 10-inch (254 mm) liquid crystal touchscreen display	✓		Super LGP		✓
Integrated rearview camera	✓		Heavy Duty (HDXL with DuraLink) or Cat Abrasion undercarriage	✓	
In-display key machine features	✓		Fine grading undercarriage		✓
Application Profile	✓		Waste, fire dozer undercarriage		✓
Operator ID/Operator ID with Security	✓		Carrier rollers	✓	
Premium cab with adjustable armrests	✓		Hydraulic track adjusters	✓	
Cloth seat	✓		Lifetime lubricated track and rollers	✓	
Deluxe leather heated/ventilated seat		✓	Moderate service track shoes (see chart on page 11)	✓	
Electrohydraulic implement and steering controls	✓		Extreme service track shoes (see chart on page 11)		✓
Joystick control – ARO		✓	Redesigned track roller frame	✓	
Fresh air filter	✓		Track roller frame guiding guards: center, partial or full (NOTE: center guiding guards standard on LGP machine)		✓
Powered fresh air filter precleaner		✓	BULLDOZERS		
Cab mounted modular Heating/Ventilation/Air Conditioning (HVAC) system	✓		VPAT dozer package		✓
Rearview mirror	✓		SU dozer package		✓
Retractable 76 mm (3 in) seatbelt	✓		BLADES		
4-point seatbelt kit (dealer installed)		✓	VPAT		✓
Grab rails/tie offs on both sides of cab roof	✓		Semi-Universal		✓
Communication radio ready		✓	Straight blade		✓
Radio, AM/FM/Aux/USB/Bluetooth®		✓	Foldable VPAT		✓
Added storage areas	✓		Waste/Landfill		✓
Cup holders	✓		Fire Dozer		✓
Dash foot pads	✓		HYDRAULICS		
Glove box	✓		Load sensing hydraulics	✓	
Lunchbox storage	✓		Independent steering and implement pumps	✓	
Wipers	✓				
High Debris/Waste cab with impact resistant polycarbonate doors, solid side windows		✓			
Heavy Duty/Forestry cab with impact resistant polycarbonate doors, sliding side windows		✓			
Fire Dozer cab with sealed and tempered doors/windows, solid side windows, fan controls, additional switches		✓			

(continued on next page)

D5 Standard and Optional Equipment

Standard and Optional Equipment (continued)

Standard and optional equipment may vary. Consult your Cat dealer for details.

	Standard	Optional		Standard	Optional
ELECTRICAL			BATTERIES, STARTERS, ALTERNATORS AND COOLANT		
Lights – 6 LED	✓		95 Amp alternator	✓	
Premium lights – 12 LED		✓	24 Volt starter	✓	
Backup alarm	✓		Arctic engine coolant, – 51° C (–60° F)		✓
Beacon warning light		✓	Engine coolant, –37° C (–35° F)	✓	
Converter: one 15 Amp, 12V outlet	✓		Cold Weather package: heavy duty battery, heavy duty starter, ether starting aid, jacket water heater		✓
Forward warning horn	✓		Two maintenance free 12-volt batteries (950 cca) (24-volt system)	✓	
SERVICE AND MAINTENANCE			ATTACHMENTS		
30-minute cab removal	✓		Ripper-ready rear hydraulics		✓
Adjustable pitch link (VPAT)	✓		Dual ripper/winch control		✓
Centralized, remote mounted pressure taps	✓		Ripper with straight or curved shanks		✓
Ecology drains	✓		Winch:		✓
Extended service intervals (500 hours engine, 1,000 hours power train)	✓		– PACCAR PA55, low speed PTO		
Fast fuel fill		✓	– PACCAR PA55, standard speed PTO		
Ground level service center (remote electrical disconnect, secondary shutdown switch, hour meter)	✓		– Fairlead Assembly; 3-roller, fits PA55 winches		
High-speed oil change		✓	– Retrofit kit (4th roller); fits PA55 winches		
Heavy duty perforated radiator doors, louvered and hinged	✓		Drawbar		✓
Rear access ladder	✓		Heavy Duty/Forestry, High Debris/Waste, Fire Dozer special arrangements		✓
Rear work light		✓	Open sweeps package		✓
Refilling fuel pump (EU only)		✓	Rear striker box with striker bar		✓
Removable engine enclosures, perforated and hinged	✓		GUARDING AND SCREENS		
S·O·S SM sampling ports	✓		Bottom guards – standard or heavy duty		✓
Shovel holder	✓		Fuel tank guards		✓
Under hood work light		✓	Grab handles	✓	
			Guards for premium lights, front and side		✓
			Side and rear screens		✓

The following information applies to the machine at the time of final manufacture as configured for sale in the regions covered in this document. The content of this declaration is valid as of the date issued; however, content related to machine features and specifications are subject to change without notice. For additional information, please see the machine's Operation and Maintenance Manual.

For more information on sustainability in action and our progress, please visit <https://www.caterpillar.com/en/company/sustainability>.

Engine

- The Cat® C7.1 engine meets U.S. EPA Tier 4 Final, EU Stage V, Japan 2014 (Tier 4 Final), and Korea Tier 5 emission standards.
 - Cat diesel engines are required to use ULSD (ultra-low sulfur diesel fuel with 15 ppm of sulfur or less) or ULSD blended with the following lower-carbon intensity fuels up to:
 - ✓ 20% biodiesel FAME (fatty acid methyl ester)*
 - ✓ 100% renewable diesel, HVO (hydrogenated vegetable oil) and GTL (gas-to-liquid) fuels
- Refer to guidelines for successful application. Please consult your Cat dealer or "Caterpillar Machine Fluids Recommendations" (SEBU6250) for details.
- *Engines with no aftertreatment devices can use higher blends, up to 30% biodiesel.*

Air Conditioning System

- The air conditioning system on this machine contains the fluorinated greenhouse gas refrigerant R134a (Global Warming Potential = 1430). The system contains 1.36 kg (3.0 lb) of refrigerant which has a CO₂ equivalent of 1.946 metric tonnes (2.145 tons).

Paint

- Based on best available knowledge, the maximum allowable concentration, measured in parts per million (PPM), of the following heavy metals in paint are:
 - Barium < 0.01%
 - Cadmium < 0.01%
 - Chromium < 0.01%
 - Lead < 0.01%

Sound Performance

For machines required to meet applicable regional regulations of Ukraine, United Kingdom, and Countries that adopt the "EU Directives."

Operator Sound Pressure Level (ISO 6396:2008) – 76 dB(A)

Exterior Sound Power Level (ISO 6395:1988) – 110 dB(A)

Oils and Fluids

- Caterpillar factory fills with ethylene glycol coolants. Cat Diesel Engine Antifreeze/Coolant (DEAC) and Cat Extended Life Coolant (ELC) can be recycled. Consult your Cat dealer for more information.
- Cat Bio HYDO™ Advanced is an EU Ecolabel approved biodegradable hydraulic oil.
- Additional fluids are likely to be present, please consult the Operations and Maintenance Manual or the Application and Installation guide for complete fluid recommendations and maintenance intervals.

Features and Technology

- The following features and technology may contribute to fuel savings and/or carbon reduction. Features may vary. Consult your Cat dealer for details.
 - Fully automatic 3-speed transmission – just set your desired ground speed and the dozer adjusts for maximum fuel efficiency and power to the ground
 - Cut maintenance costs up to 10% with extended maintenance intervals
 - Assist technology features help operators work faster and more accurately to save time, materials and fuel
 - Boost productivity up to 50% with Cat technologies like Cat Grade with Slope Assist and Cat Grade with 3D
 - Remote Flash and Remote Troubleshoot

Recycling

- The materials included in machines are categorized as below with approximate weight percentage. Because of variations of product configurations, the following values in the table may vary.

Material Type	Weight Percentage
Steel	78.81%
Iron	7.69%
Nonferrous Metal	3.39%
Mixed Metal	0.19%
Mixed-Metal and Nonmetal	2.14%
Plastic	0.63%
Rubber	0.64%
Mixed Nonmetallic	0.06%
Fluid	0.43%
Other	0.90%
Uncategorized	5.12%
Total	100%

- A machine with higher recyclability rate will ensure more efficient usage of valuable natural resources and enhance End-of-Life value of the product. According to ISO 16714 (Earthmoving machinery – Recyclability and recoverability – Terminology and calculation method), recyclability rate is defined as percentage by mass (mass fraction in percent) of the new machine potentially able to be recycled, reused, or both.

All parts in the bill of material are first evaluated by component type based on a list of components defined by the ISO 16714 and Japan CEMA (Construction Equipment Manufacturers Association) standards. Remaining parts are further evaluated for recyclability based on material type.

Because of variations of product configurations, the following value in the table may vary.

Recyclability – 97%



D5

Waste Handler

Waste Handling package provides added features to help protect the machine and operator in harsh waste applications. Specialized guarding, striker bars and seals help protect the machine from impact, wrapping and airborne debris.

Next Generation Performance

- Harness more weight and horsepower than D6N to take on a wide range of waste handling tasks.
- Fully automatic 3-speed transmission gives you seamless acceleration, faster cycle times and more nimble movement around the site.
- No need to shift – just set your desired ground speed and the dozer adjusts for maximum fuel efficiency and power to the ground.
- Completely redesigned, more spacious cab for a whole new standard in comfort and productivity.
- More glass area, steeper hood angle provide 30 percent better forward visibility than the previous model.

Added Machine Protection

- High debris cab with impact resistant polycarbonate doors and solid side windows for improved pressurization.
- Powered air precleaner helps keep cab air cleaner and pressurized for greater operator comfort. A variety of optional filters are available from Cat Parts to customize filtration for the environment.
- Fuel tank/fuel tank cover guard and heavy duty bottom guards shield major machine components.
- Internal sealing keeps the trash away from the inner compartments.
- Rear striker bar helps protect against trash climbing up the tracks.
- Guarded final drives give added protection against wrapping and impact.
- 12 premium guarded LED lights illuminate the work area.

Ease of Maintenance

- Automatic reversing fan for easy cleanout access.
- Trash resistant radiator, with 6.4 fins per inch, helps reduce plugging.
- Quick access cab floor option offers tool-less access to the floor plate opening.
- Optional engine air cleaner with turbine/screen delivers cleaner air to the power train.

Equipped for the Job

- Landfill blades are equipped with a trash rack to increase productive capacity when machine works in lighter material like waste.
- Heavy Duty Extended Life (HDXL) undercarriage includes Kevlar® guarded, sealed idlers to help prevent debris such as wire, string or plastic bags from wrapping into seals.
- Center-hole track helps eject debris.

D5 Waste Handler Specifications

Engine

Engine Model	Cat C7.1	
Emissions	U.S. EPA Tier 4 Final/ EU Stage V/Japan 2014/ Korea Tier 5	
Power Train	Fully automatic 3-speed	
Net Power (1,770 rpm)		
ISO 9249/SAE J1349	127 kW	170 hp
ISO 9249 (DIN)	172 mhp	
Engine Power – Maximum (1,600 rpm)		
ISO 14396	148 kW	198 hp
ISO 14396 (DIN)	201 mhp	
Gross Power – Maximum (1,600 rpm)		
SAE J1995	151 kW	202 hp
Bore	105 mm	4.1 in
Stroke	135 mm	5.3 in
Displacement	7.1 L	433 in ³

- Net power advertised is the power available at the engine flywheel when the engine is equipped with a fan, air cleaner, clean emissions module and alternator.
- Advertised power is tested per the specified standard in effect at the time of manufacture.
- No derating required up to 3000 m (9,840 ft) altitude, beyond 3000 m (9,840 ft) automatic derating occurs.
- Cat diesel engines are required to use ULSD (ultra-low sulfur diesel fuel with 15 ppm of sulfur or less) or ULSD blended with the following lower-carbon intensity fuels up to:
 - ✓ 20% biodiesel FAME (fatty acid methyl ester)*
 - ✓ 100% renewable diesel, HVO (hydrogenated vegetable oil) and GTL (gas-to-liquid) fuels

Refer to guidelines for successful application. Please consult your Cat dealer or “Caterpillar Machine Fluids Recommendations” (SEBU6250) for details.

**Engines with no aftertreatment devices can use higher blends, up to 30% biodiesel.*

Air Conditioning System

The air conditioning system on this machine contains the fluorinated greenhouse gas refrigerant R134a (Global Warming Potential = 1430). The system contains 1.36 kg of refrigerant which has a CO₂ equivalent of 1.946 metric tonnes.

Fluid/Refill Capacities

Fuel Tank	315 L	83.2 gal
DEF Tank	16 L	4.2 gal
Cooling System	41 L	10.8 gal
Engine Crankcase	18 L	4.8 gal
Power Train	160 L	42.3 gal
Roller Frames Standard/LGP (each)	18/27 L	4.8/7.1 gal
Final Drives (each)	8 L	2.1 gal
Hydraulic System	80 L	21.1 gal

Transmission

0.5 Forward	2.5 km/h (2.4 km/h)	1.6 mph (1.5 mph)
1.0 Forward	3.3 km/h (3.0 km/h)	2.1 mph (1.9 mph)
1.5 Forward	4.4 km/h	2.7 mph
2.0 Forward	5.8 km/h	3.6 mph
2.5 Forward	7.5 km/h	4.7 mph
3.0 Forward	9.8 km/h	6.1 mph
0.5 Reverse	3.1 km/h (2.9 km/h)	1.9 mph (1.8 mph)
1.0 Reverse	4.1 km/h (3.5 km/h)	2.5 mph (2.2 mph)
1.5 Reverse	5.4 km/h	3.4 mph
2.0 Reverse	7.1 km/h	4.4 mph
2.5 Reverse	9.5 km/h	5.9 mph
3.0 Reverse	12.2 km/h	7.6 mph

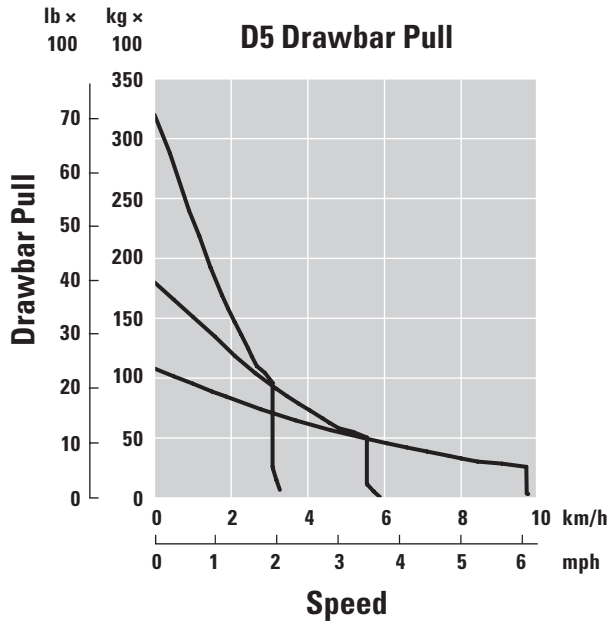
Maximum Drawbar Pull

1.0 Forward	320 kN	71,939 lbf
2.0 Forward	198 kN	44,512 lbf
3.0 Forward	113 kN	25,403 lbf

NOTE: Data between brackets are values for EU.

D5 Waste Handler Specifications

Drawbar Pull



Hydraulic Controls – Pressures

Maximum Implement Operating Pressure	25 000 kPa	3,626 psi
Maximum Steering Operating Pressure	45 000 kPa	6,527 psi

Hydraulic Controls – Pump

Pump Output		
Implement	127 L/min	33.5 gal/min
Steering	165 L/min	43.5 gal/min
Fan	49 L/min	12.9 gal/min
Lift Cylinder Flow	127 L/min	33.5 gal/min
Tilt Cylinder Flow	127 L/min	33.5 gal/min
Ripper Cylinder Flow	127 L/min	33.5 gal/min
Angle Cylinder Flow – VPAT	127 L/min	33.5 gal/min

D5 Waste Handler Specifications

D5 Waste Handler – LGP VPAT

Operating Weight*	20 680 kg	45,599 lb
Shipping Weight**	20 450 kg	45,092 lb
Ground Pressure (ISO 16754)	35.2 kPa	5.1 psi
Undercarriage (Standard)	46 Section/ 8 Bottom Rollers	
1 Track Gauge	2160 mm	85.0 in
2 Width of Track Shoe (Standard)	840 mm	33 in
3 Width of Tractor	3000 mm	118.1 in
4 Length of Track on Ground	3116 mm	122.7 in
Ground Contact Area (ISO 16754)	5.8 m ²	8,995 in ²
Grouser Height (Extreme Service)	66 mm	2.6 in
Ground Clearance	473 mm	18.6 in
5 Machine Height***	3200 mm	126.0 in
6 Length of Basic Tractor****	5130 mm	202.0 in

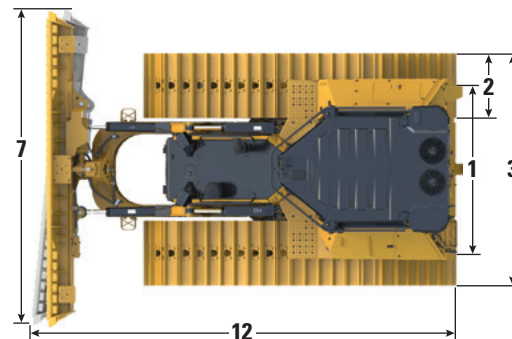
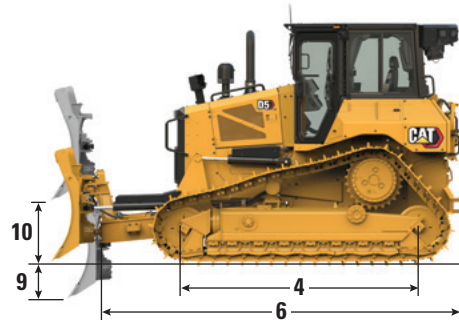
All dimensions above with Cat HDXL undercarriage with Extreme Service shoes of maximum width for configuration, VPAT Landfill blade, and calculated per ISO 16754 unless otherwise specified.

*Operating weight includes full Waste Handler package with landfill blade, lubricants, coolant, full fuel tank, ROPS/FOPS waste cab, cab air pressurizer, rear striker bar/box, waste undercarriage, guarded final drives, center hole track and 75 kg (165 lb) operator.

**Shipping weight includes full Waste Handler package, with landfill blade (aside), blade lift cylinders, C-frame, lubricants, coolant, 10% fuel, ROPS/FOPS waste cab, cab air pressurizer, rear striker bar/box, waste undercarriage, guarded final drives, center hole track.

***Machine height from tip of grouser to top of Product Link Antenna. When Cat Grade with 3D antennas are installed there is no added machine height.

****Length of Basic Tractor from the back of the rear striker box to the tip of the C-Frame.



Blade

Configuration	LGP VPAT Landfill	
Capacity (ISO 9246 – including trash rack on moldboard)	6.3 m ³	8.2 yd ³
7 Width across End Bits	4080 mm	13.4 ft
Width without End Bits	3969 mm	156.3 in
Width across End Bits (Blade Angled 24°)	3736 mm	147.1 in
Width without End Bits (Blade Angled 24°)	3640 mm	143.3 in
Maximum Blade Angle	24°	
8 Height	1473 mm	58 in
9 Dig Depth	580 mm	22.8 in
10 Lift Height	1051 mm	41.4 in
11 Maximum Tilt at Blade Corner	371 mm	14.6 in
12 Maximum Tilt Angle	8.5°	
Pitch Adjustment	60° (cutting edge/ground, nominal); -2°/+4°	
Length of Machine (Blade Straight)	5518 mm	217 in
Length of Machine (Blade Angled 24°)	6524 mm	248 in
Weight (Blade)	1370 kg	3,020 lb

D5 Waste Handler Specifications

D5 Waste Handler – VPAT

Operating Weight*	18 650 kg	41,123 lb
Shipping Weight**	18 420 kg	40,616 lb
Ground Pressure (ISO 16754)	51.7 kPa	7.5 psi
Undercarriage (Standard)	40 Section/ 7 Bottom Rollers	
1 Track Gauge	1890 mm	74.4 in
2 Width of Track Shoe (Standard)	610 mm	24 in
3 Width of Tractor	2500 mm	98.4 in
4 Length of Track on Ground	2562 mm	100.9 in
Ground Contact Area (ISO 16754)	3.5 m ²	5,469 in ²
Grouser Height (Extreme Service)	66 mm	2.6 in
Ground Clearance	358 mm	14.1 in
5 Machine Height***	3085 mm	121.5 in
6 Length of Basic Tractor****	4761 mm	187.4 in

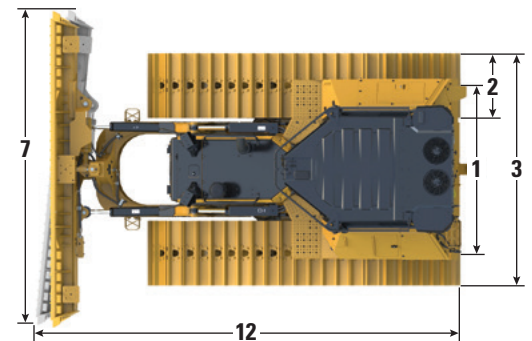
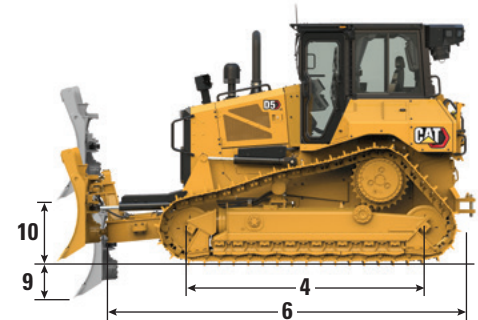
All dimensions above with Cat HDXL undercarriage with Extreme Service shoes of maximum width for configuration, VPAT Landfill blade, and calculated per ISO 16754 unless otherwise specified.

*Operating weight includes full Waste Handler package, with landfill blade, lubricants, coolant, full fuel tank, ROPS/FOPS waste cab, cab air pressurizer, rear striker bar/box, waste undercarriage, guarded final drives, center hole track and 75 kg (165 lb) operator.

**Shipping weight includes full Waste Handler package, with landfill blade (aside), blade lift cylinders, C-frame, lubricants, coolant, 10% fuel, ROPS/FOPS waste cab, cab air pressurizer, rear striker bar/box, waste undercarriage, guarded final drives, center hole track.

***Machine height from tip of grouser to top of Product Link Antenna. When Cat Grade with 3D antennas are installed there is no added machine height.

****Length of Basic Tractor from the back of the rear striker box to the tip of the C-Frame.



LGP VPAT Configuration Shown

Blade

Configuration	VPAT Landfill	
Capacity (ISO 9246 – including trash rack on moldboard)	6.8 m ³	8.9 yd ³
7 Width across End Bits	3272 mm	10.7 ft
Width without End Bits	3159 mm	10.4 ft
Width across End Bits (Blade Angled 24°)	2998 mm	118.0 in
Width without End Bits (Blade Angled 24°)	2908 mm	114.5 in
Maximum Blade Angle	24°	
8 Height	1687 mm	66.4 in
9 Dig Depth	559 mm	22.0 in
10 Lift Height	971 mm	38.2 in
11 Maximum Tilt at Blade Corner	257 mm	10.1 in
12 Maximum Tilt Angle	8.5°	
Pitch Adjustment	60° (cutting edge/ground, nominal); -2°/+4°	
Length of Machine (Blade Straight)	5153 mm	203 in
Length of Machine (Blade Angled 24°)	5842 mm	230 in
Blade Weight	1265 kg	2,889 lb

D5 Waste Handler Specifications

D5 Waste Handler – SU

Operating Weight*	18 860 kg	41,138 lb
Shipping Weight**	18 630 kg	41,079 lb
Ground Pressure (ISO 16754)	52.4 kPa	7.6 psi
Undercarriage	40 Section/ 7 Bottom Rollers	
1 Track Gauge	1890 mm	74.4 in
2 Width of Track Shoe (Standard)	610 mm	24 in
3 Width of Tractor (without trunnions)	2500 mm	98.4 in
4 Length of Track on Ground	2562 mm	100.9 in
Ground Contact Area (ISO 16754)	3.5 m ²	5,469 in ²
Grouser Height (Extreme Service)	66 mm	2.6 in
Ground Clearance	358 mm	14.1 in
5 Machine Height***	3085 mm	121.5 in
6 Length of Basic Tractor****	4108 mm	161.7 in

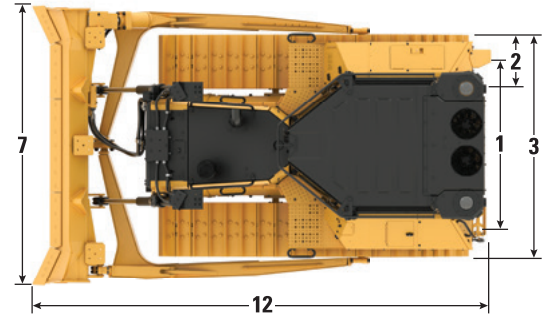
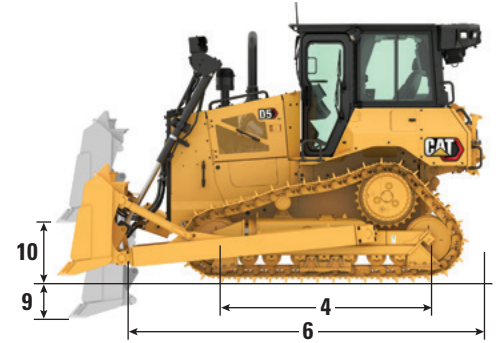
All dimensions above with Cat HDXL undercarriage with Extreme Service shoes of maximum width for configuration, SU Landfill blade, and calculated per ISO 16754 unless otherwise specified.

*Operating weight includes full Waste Handler package with landfill blade, lubricants, coolant, full fuel tank, ROPS/FOPS waste cab, cab air pressurizer, rear striker bar/box, waste undercarriage, guarded final drives, center hole track and 75 kg (165 lb) operator.

**Shipping weight includes full Waste Handler package, with landfill blade and push arms installation (aside), blade lift cylinders, C-frame, lubricants, coolant, 10% fuel, ROPS/FOPS waste cab, cab air pressurizer, rear striker bar/box, waste undercarriage, guarded final drives, center hole track.

***Machine height from tip of grouser to top of Product Link Antenna. When Cat Grade with 3D antennas are installed there is no added machine height.

****Length of Basic Tractor from the back of the rear striker box to the tip of the retracted lift cylinders.



Standard SU Configuration Shown

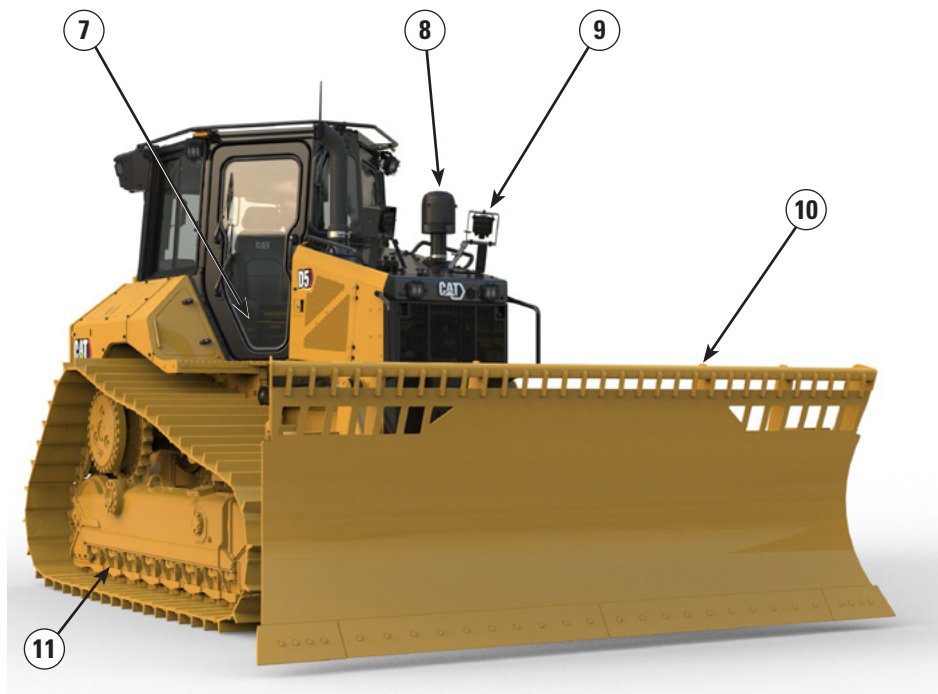
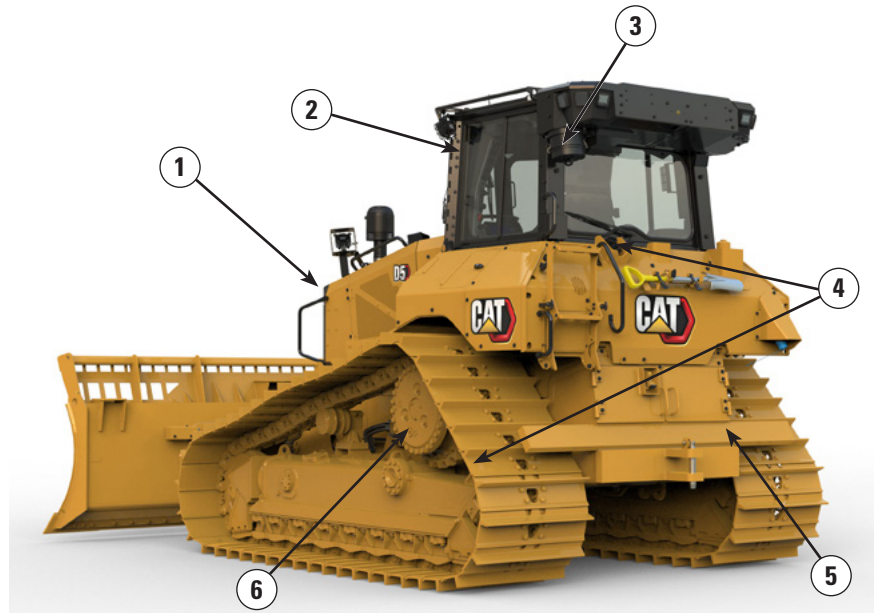
Blade

Configuration	SU Landfill	
Capacity (ISO 9246 – including trash rack on moldboard)	7.3 m ³	9.5 yd ³
7 Width across End Bits	3164 mm	10.4 ft
Width without End Bits	3122 mm	10.2 in
8 Height	1703 mm	67.0 in
9 Dig Depth	544 mm	21.4 in
10 Lift Height	1104 mm	43.4 in
11 Maximum Tilt at Blade Corner	140 mm	5.5 in
12 Maximum Tilt Angle	8°	
Pitch Adjustment	±5.1°	
Length of Machine with SU Landfill Blade	5240 mm	206 in
Blade Weight (Landfill blade + HD push arms installed)	2250 kg	4,960 lb

D5 Waste Handler Specifications

D5 Waste Handler Features

- 1) Trash resistant radiator, with 6.4 fins per inch, helps reduce plugging. Automatic reversing fan for easy cleanout access.
- 2) High debris cab has impact-resistant polycarbonate doors and solid side windows for improved pressurization.
- 3) Powered air precleaner helps keep cab air cleaner and pressurized for greater operator comfort. A variety of optional filters are available from Cat Parts to customize filtration for the environment.
- 4) Fuel tank/fuel tank cover guard and heavy duty bottom guards shield major machine components. Internal sealing keeps the trash away from the inner compartments.
- 5) Rear striker bar helps protect against trash climbing up the tracks.
- 6) Guarded final drives give added protection against wrapping and impact.



- 7) Quick access cab floor option offers tool-less access to the floor plate opening.
- 8) Optional engine air cleaner with turbine/screen delivers cleaner air to the power train.
- 9) 12 premium LED lights illuminate the work area.
- 10) Landfill Blades are equipped with a trash rack to increase productive capacity when machine works in lighter material like waste.

11) Waste Undercarriage

- Heavy Duty Extended Life (HDXL) undercarriage includes Kevlar guarded, sealed idlers to help prevent debris such as wire, string or plastic bags from wrapping into seals.
- Center-hole track helps eject debris.

D5 Waste Handler Specifications

Track Shoes

Some track shoes not available in all regions. Please consult your Cat dealer for details.

Note: While a variety of track shoes are available, Center Hole track shoes highly recommended for best performance in Waste/Landfill applications.

Standard			
560 mm (22 in)	Heavy Duty Extended Life (HDXL)	Moderate Service	
560 mm (22 in)	HDXL	Extreme Service	
600 mm (24 in)	HDXL	Moderate Service	
600 mm (24 in)	HDXL	Extreme Service	
600 mm (24 in)	HDXL	Extreme Service	Center Hole
LGP			
840 mm (33 in)	HDXL	Extreme Service	
840 mm (33 in)	HDXL	Extreme Service	Center Hole
860 mm (34 in)	HDXL	Extreme Service	

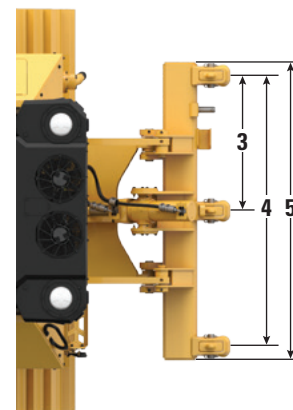
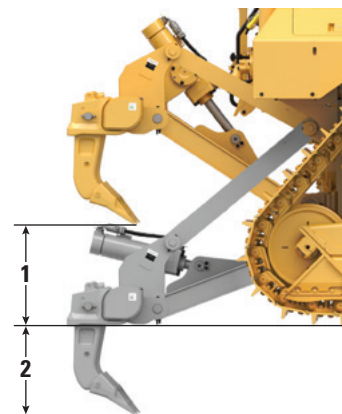
Dimensions – Rear Attachments

Add the following to the total length of the machine when these rear attachments are installed.

D5	Drawbar		Winch		Ripper		Striker Box	
Push Arm and VPAT Dozers	16 mm	0.6 in	446 mm	17.6 in	1060 mm	41.7 in	152 mm	6 in

Ripper

Type	Fixed Parallelogram	
Weight with Three Shanks	1393 kg	3,071 lb
1 Maximum Clearance, Raised (Shank Tip)		
D5 VPAT/Push Arms	404 mm	15.9 in
D5 LGP VPAT	518 mm	20.4 in
2 Maximum Penetration		
Standard	552 mm	21.7 in
LGP	437 mm	17.2 in
3 Pocket Spacing	1000 mm	3 ft 3.4 in
4 Shank Gauge	2 m	6 ft 7 in
Shank Section	73 mm × 176 mm	2.9 in × 6.9 in
Number of Pockets	3	
5 Overall Beam Width	2202 mm	86.7 in
Beam Cross Section	219 mm × 254 mm	8.6 in × 10.0 in
Maximum Penetration Force		
Standard	51.6 kN	11,600 lbf
LGP	43 kN	9,667 lbf
Maximum Pryout Force		
Standard	211.2 kN	47,480 lbf
LGP	170 kN	38,217 lbf



D5 Waste Handler Specifications

Winch

Winch Model	PA55 Standard Speed	
Weight*	1277 kg	2,815 lb
Oil Capacity	73 L	19.3 gal
Winch and Bracket Length	1145 mm	45.1 in
Winch Case Width	975 mm	38.4 in
Drum Diameter	254 mm	10 in
Drum Width	315 mm	12.4 in
Flange Diameter	504 mm	19.8 in
Drum Capacity – 22 mm (0.88 in)	88 m	288 ft 9 in
Winch Drive	Mechanical	
Control	Electric	
Overall Width	975 mm	38.4 in
Rope Diameter (recommended)	19 mm	0.75 in
Cable Ferrule Size (O.D. × Length)	54 mm × 67 mm	2.1 in × 2.6 in
Maximum Bare Drum		
Line Pull	31 388 kg*	69,200 lb*
Line Speed	43 m/min	141 ft/min
Maximum Full Drum		
Line Pull	23 359 kg*	54,100 lb*
Line Speed	66 m/min	210 ft/min

Winch Model	PA55 Slow Speed	
Weight*	1277 kg	2,815 lb
Oil Capacity	73 L	19.3 gal
Winch and Bracket Length	1145 mm	45.1 in
Winch Case Width	975 mm	38.4 in
Drum Diameter	254 mm	10 in
Drum Width	315 mm	12.4 in
Flange Diameter	504 mm	19.8 in
Drum Capacity – 22 mm (0.88 in)	88 m	288 ft 9 in
Winch Drive	Mechanical	
Control	Electric	
Overall Width	975 mm	38.4 in
Rope Diameter (recommended)	19 mm	0.75 in
Cable Ferrule Size (O.D. × Length)	54 mm × 67 mm	2.1 in × 2.6 in
Maximum Bare Drum		
Line Pull	31 388 kg*	69,200 lb*
Line Speed	16 m/min	53 ft/min
Maximum Full Drum		
Line Pull	31 388 kg*	69,200 lb*
Line Speed	28 m/min	91 ft/min

*Weight: Includes pump, operator controls, oil, mounting brackets and spacers.

Slow and standard speed winches are available.

Standards

ROPS/FOPS/OPS

- ROPS (Rollover Protective Structure) offered by Caterpillar for the machine meets ROPS criteria ISO 3471:2008.
- FOPS (Falling Object Protective Structure) meets ISO 3449:2005 Level II.
- OPS (Operator Protective Structure) screens meets OPS criteria per ISO 8084:2003 and WCB G604:2011.

Brakes

- Brakes meet the standard ISO 10265:2008.

Sound Level Information

Hearing protection may be needed when the machine is operated with an open operator station, in a noisy environment, with a cab that is not properly maintained, or when the doors and windows are open for extended periods of time.

Sound Level		Test Method
Operator Sound Pressure Level	76 dB(A)	"ISO 6396:2008" ⁽¹⁾
	76 dB(A)*	
Exterior Sound Power Level	110 dB(A)	"ISO 6395:2008" ⁽²⁾
	110 dB(A)*	"ISO 6395:1988" ⁽²⁾

*For machines required to meet applicable regional regulations of Ukraine, United Kingdom, and Countries that Adopt the "EU Directives."

⁽¹⁾The measurement was conducted at 70% of the maximum engine cooling fan speed. The sound level may vary at different engine cooling fan speeds. The measurement was conducted with the cab doors and the cab windows closed. The cab was properly installed and maintained.

⁽²⁾The measurement was conducted at 70% of the maximum engine cooling fan speed. The sound level may vary at different engine cooling fan speeds.

The sound levels listed above include both measurement uncertainty and uncertainty due to production variation.

Vibration Levels

Maximum Hand/Arm*	
ISO 5349:2001	2.5 m/s ²
Maximum Whole Body*	
ISO/TR25398:2006	0.5 m/s ²
Seat Transmissibility Factor	
ISO 7096:2000 – spectral class EM6	<0.7

- Values are for an experienced operator in a dozing application, consult the Operating and Maintenance Manual for further details.

Advanced Cabin Filtration

Operator Cabin

- Distributed HVAC ducting with automatic temperature control and blower speed provides ultimate operator comfort with less user input.
- Reduced maintenance of the condenser core with automatic reversing fans.
- Cat Advanced Cabin Filtration is standard.

Cat Advanced Cabin Filtration

- Operator protection from respirable particulate (0.3-10-micron size).
- Sustainably pressurized cab (U.S. Silica compliant).
- Reduced maintenance with longer life, high efficiency filters.
- Protection for all cabin components: electronics, etc.
- Helps meet U.S. Occupational Safety and Health Administration Silica Rule Table 1 requirements for operator cabs.
- Multi-tiered filter offerings for optional efficiency upgrades. Contact Cat dealer for availability.
 - MERV 16 – Standard Equipment
 - HEPA
 - Activated Carbon + HEPA
 - ABEK1 + HEPA

D5 Waste Handler Specifications

Dozer Technology Features

Assist technology features to help operators of varied experience levels get the job done faster and more accurately. Grade and Command offerings help further enhance your productivity, efficiency and job site safety.

The cab is Third Party Grade Control Ready, equipped with CAN interface, harness pass throughs and mounting features to make it easier to install the grade control system of your choice.

ARO with Assist Package

Attachment Ready Option (ARO)	ARO provides wiring and mounting provisions for dealer installation of Grade with 3D, AccuGrade, UTS, or other grade control systems.
Cat Grade with Slope Assist	Slope Assist automatically maintains pre-established blade position without a GNSS/GPS signal – no additional hardware or software needed. For machines with 3D, operators can easily switch back and forth from full 3D automatics to Slope Assist.
Steer Assist	Steer Assist automates track and blade tilt steering. Helps reduce operator fatigue by automatically maintaining straight travel with light loads or heavy loads on flat ground and cross slopes. No GNSS/GPS required.
Stable Blade	Stable Blade works seamlessly with operator inputs to help produce a smoother surface when operating manually.
Slope Indicate	Slope Indicate is included in the main machine display and shows side slope and uphill/downhill grades to help operators with slope work.
Blade Load Monitor	Blade Load Monitor gives you real-time feedback on current load versus the optimal blade load based on your ground conditions. Actively monitors machine load and track slip to help you reach optimal pushing capacity. ¹
Traction Control	Traction Control automatically reduces track slip to save you time, fuel and track wear. ¹
AutoCarry™	AutoCarry automates blade lift to help you maintain consistent blade load and help reduce track slip. ¹

Grade 3D with Assist Package

Includes all features from the ARO with Assist Package listed above, plus:

Cat Grade with 3D	Factory integrated Cat Grade with 3D uses GNSS/GPS to control the blade so you can get to design plan faster. Low profile antennas are integrated into the cab roof and GNSS/GPS receivers are mounted inside the cab for better protection. ²
Steer Assist 3D	Automatically follow guidance lines from site design plans (or Infield designs) under light load or heavy load. ²
Dedicated Touchscreen Grade Display	Full-color Grade operator interface is intuitive and easier to use. The 254 mm (10 in) touchscreen uses an Android OS platform and operates like a smart phone.

Remote Control/Cat Command

Remote Control Ready Cab (Standard)	Cab is Remote Control Ready from the factory with external connector for dealer installation of the Cat Command remote control system.
Command for Dozing ² (Optional)	Cat Command remote control technology provides full dozer maneuverability from a safe distance when working in hazardous environments. Command offers the choice of line-of-sight consoles or long-distance operator stations (non-line-of-sight).

¹Feature not operational indoors or in areas where a GPS signal is not available.

²Requires Software Enabled Attachment (SEA) installation when not configured from the factory.

Note: Grade and Assist technologies, except Slope Indicate, Blade Load Monitor and Traction Control, are not compatible with Angle blades or specialty blades from Cat Work Tools. Please consult with your Cat dealer for details.

D5 Waste Handler Standard and Optional Equipment

Standard and Optional Equipment

Standard and optional equipment may vary. Consult your Cat dealer for details.

	Standard	Optional		Standard	Optional
POWER TRAIN			CAT TECHNOLOGY		
Cat C7.1 diesel engine	✓		Slope Indicate	✓	
Fully-automatic 3-speed transmission:	✓		ARO with Assist Package		✓
– Automatic directional and downshift			– Attachment Ready Option (ARO)		
– Controlled throttle, load compensated			– Slope Assist		
– Infinite ground speed adjustment			– Steer Assist		
– Programmable/selectable			– Stable Blade		
– bi-directional shifting			– Blade Load Monitor		
Air-to-air aftercooler (ATAAC)	✓		– Traction Control		
Debris resistant radiator cores	+		– AutoCarry		
6.4 fins per inch			Grade 3D with Assist Package		✓
Automatic glowplugs	✓		– Full-color 10-inch (254 mm)		
Differential steering	✓		– touchscreen grade display		
Engine air precleaner	✓		– Steer Assist 3D		
Engine air precleaner with turbine/screen		*	– Grade receivers and antennas		
Engine idle shutdown	✓		– Grade Software Enabled Attachment (SEA)		
Enhanced Power Train Control:	✓		– ARO with Assist features		
– Hill Decent Control			Third Party Grade Control Ready Cab	✓	
– Hill Hold			Compatibility with radios and base stations from Trimble, Topcon, and Leica	✓	
– Decel Brake Pedal			Capability to install 3D grade systems from Trimble, Topcon, and Leica	✓	
– Steering Radius Control			Product Link, Cellular	✓	
Extended life coolant	✓		Product Link – Dual Cellular/Satellite		✓
Ether starting aid		✓	Remote Flash/Troubleshoot	✓	
Final Drives – Waste	+		Grade Connectivity		✓
Final Drives – Standard or LGP	✓		Operator ID	✓	
Fuel priming pump	✓		Machine Security – Passcode	✓	
Fuel water separator	✓		Machine Security – Bluetooth		✓
Hydraulic reversing fan	+		Remote Control Ready	✓	
Sound suppression (EU only)		✓	Cat Command for Dozing		✓
Trash Resistant Radiator Cores		✓			

+Included in Waste Handler Package

*Recommended

(continued on next page)

D5 Waste Handler Standard and Optional Equipment

Standard and Optional Equipment *(continued)*

Standard and optional equipment may vary. Consult your Cat dealer for details.

	Standard	Optional		Standard	Optional
OPERATOR ENVIRONMENT			UNDERCARRIAGE		
Fully redesigned cab, sound suppressed, with Integrated Roll Over Protective Structure (IROPS), screen ready	✓		Standard or Low Ground Pressure (LGP) undercarriage	✓	
High Debris/Waste cab with impact resistant polycarbonate doors, solid side windows	+		Heavy Duty (HDXL with DuraLink) Waste undercarriage	+	
Full-color 10-inch (254 mm) liquid crystal touchscreen display	✓		Carrier rollers	✓	
Integrated rearview camera	✓		Hydraulic track adjusters	✓	
In-display key machine features	✓		Lifetime lubricated track and rollers	✓	
Application Profile	✓		Extreme service center hole track shoes (see chart on page 26)	+	
Operator ID/Operator ID with Security	✓		Redesigned track roller frame	✓	
Premium cab with adjustable armrests	✓		Track roller frame guiding guards: center, partial or full (NOTE: center guiding guards standard on LGP machine)		✓
Cloth seat	✓		BULLDOZERS		
Deluxe leather heated/ventilated seat		✓	VPAT dozer package		✓
Electrohydraulic implement and steering controls	✓		SU heavy duty dozer package		*
Joystick control – ARO		✓	BLADES		
Powered fresh air filter precleaner	+		VPAT		✓
Cab mounted modular Heating/Ventilation/Air Conditioning (HVAC) system	✓		Semi-Universal		✓
Rearview mirror	✓		Foldable VPAT		✓
Retractable 76 mm (3 in) seatbelt	✓		Waste/Landfill – Semi-Universal		*
4-point seatbelt kit (dealer installed)		✓	Waste/Landfill – VPAT		*
Grab rails/tie offs on both sides of cab roof	✓		HYDRAULICS		
Communication radio ready		✓	Load sensing hydraulics	✓	
Radio, AM/FM/Aux/USB/Bluetooth		✓	Independent steering and implement pumps	✓	
Added storage areas	✓				
Cup holders	✓				
Dash foot pads	✓				
Glove box	✓				
Lunchbox storage	✓				
Wipers	✓				

(continued on next page)

+Included in Waste Handler Package

*Recommended

D5 Waste Handler Standard and Optional Equipment

Standard and Optional Equipment *(continued)*

Standard and optional equipment may vary. Consult your Cat dealer for details.

	Standard	Optional		Standard	Optional
ELECTRICAL			BATTERIES, STARTERS, ALTERNATORS AND COOLANT		
Premium lights – 12 LED	+		95 Amp alternator	✓	
Backup alarm	✓		24 Volt starter	✓	
Beacon warning light	+		Arctic engine coolant, – 51° C (–60° F)		✓
Converter: one 15 Amp, 12V outlet	✓		Engine coolant, –37° C (–35° F)	✓	
Forward warning horn	✓		Cold Weather package: heavy duty battery, heavy duty starter, ether starting aid, jacket water heater		✓
SERVICE AND MAINTENANCE			ATTACHMENTS		
30-minute cab removal	✓		Ripper-ready rear hydraulics		✓
Adjustable pitch link (VPAT)	✓		Dual ripper/winch control		✓
Centralized, remote mounted pressure taps	✓		Ripper with straight or curved shanks		✓
Ecology drains	✓		Winch:		✓
Extended service intervals (500 hours engine, 1,000 hours power train)	✓		– PACCAR PA55, low speed PTO		
Fast fuel fill		✓	– PACCAR PA55, standard speed PTO		
Ground level service center (remote electrical disconnect, secondary shutdown switch, hour meter)	✓		– Fairlead Assembly; 3-roller, fits PA55 winches		
High-speed oil change		✓	– Retrofit kit (4th roller); fits PA55 winches		
Heavy duty perforated radiator doors, louvered and hinged	✓		Drawbar		✓
Rear access ladder	✓		Rear striker box with striker bar	+	
Rear work light		✓	GUARDING AND SCREENS		
Refilling fuel pump (EU only)		✓	Bottom guards – heavy duty	+	
Removable engine enclosures, perforated and hinged	✓		Fuel tank guards	+	
S·O·S SM sampling ports	✓		Grab handles	✓	
Shovel holder	✓		Guards for premium lights, front and side	+	
Under hood work light		✓	Side and rear screens		✓
			Heavy duty rear enclosures	+	
			Sealing throughout the machine for added debris protection	+	

+Included in Waste Handler Package



D5

Heavy Duty/Forestry

Take on the demands of forestry and land clearing work with factory-installed equipment designed to help protect the operator and the machine in harsh applications.

Next Generation Performance

- Harness more weight and horsepower than D6N to take on a wide range of forestry and land clearing tasks.
- Fully automatic 3-speed transmission gives you seamless acceleration, faster cycle times and more nimble movement around the site.
- No need to shift – just set your desired ground speed and the dozer adjusts for maximum fuel efficiency and power to the ground.
- Completely redesigned, more spacious cab for a whole new standard in comfort and productivity.
- More glass area, steeper hood angle provide 30 percent better forward visibility than the previous model.

Heavy Duty/Forestry

- High debris cab has impact-resistant polycarbonate doors.
- Includes rear/side window screens and sweeps to help protect the machine and operator from debris.
- Heavy duty guarding package with heavy duty bottom guards and fuel tank guard to help shield major machine components.
- Optional engine air cleaner with turbine/screen delivers cleaner air to the power train.
- 12 premium LED lights illuminate the work area.

D5 Heavy Duty/Forestry Specifications

Engine

Engine Model	Cat C7.1	
Emissions	U.S. EPA Tier 4 Final/ EU Stage V/Japan 2014/ Korea Tier 5	
Power Train	Fully automatic 3-speed	
Net Power (1,770 rpm)		
ISO 9249/SAE J1349	127 kW	170 hp
ISO 9249 (DIN)	172 mhp	
Engine Power – Maximum (1,600 rpm)		
ISO 14396	148 kW	198 hp
ISO 14396 (DIN)	201 mhp	
Gross Power – Maximum (1,600 rpm)		
SAE J1995	151 kW	202 hp
Bore	105 mm	4.1 in
Stroke	135 mm	5.3 in
Displacement	7.1 L	433 in ³

- Net power advertised is the power available at the engine flywheel when the engine is equipped with a fan, air cleaner, clean emissions module and alternator.
- Advertised power is tested per the specified standard in effect at the time of manufacture.
- No derating required up to 3000 m (9,840 ft) altitude, beyond 3000 m (9,840 ft) automatic derating occurs.
- Cat diesel engines are required to use ULSD (ultra-low sulfur diesel fuel with 15 ppm of sulfur or less) or ULSD blended with the following lower-carbon intensity fuels up to:
 - ✓ 20% biodiesel FAME (fatty acid methyl ester)*
 - ✓ 100% renewable diesel, HVO (hydrogenated vegetable oil) and GTL (gas-to-liquid) fuels

Refer to guidelines for successful application. Please consult your Cat dealer or “Caterpillar Machine Fluids Recommendations” (SEBU6250) for details.

**Engines with no aftertreatment devices can use higher blends, up to 30% biodiesel.*

Air Conditioning System

The air conditioning system on this machine contains the fluorinated greenhouse gas refrigerant R134a (Global Warming Potential = 1430). The system contains 1.36 kg of refrigerant which has a CO₂ equivalent of 1.946 metric tonnes.

Fluid/Refill Capacities

Fuel Tank	315 L	83.2 gal
DEF Tank	16 L	4.2 gal
Cooling System	41 L	10.8 gal
Engine Crankcase	18 L	4.8 gal
Power Train	160 L	42.3 gal
Roller Frames Standard/LGP (each)	18/27 L	4.8/7.1 gal
Final Drives (each)	8 L	2.1 gal
Hydraulic System	80 L	21.1 gal

Transmission

0.5 Forward	2.5 km/h (2.4 km/h)	1.6 mph (1.5 mph)
1.0 Forward	3.3 km/h (3.0 km/h)	2.1 mph (1.9 mph)
1.5 Forward	4.4 km/h	2.7 mph
2.0 Forward	5.8 km/h	3.6 mph
2.5 Forward	7.5 km/h	4.7 mph
3.0 Forward	9.8 km/h	6.1 mph
0.5 Reverse	3.1 km/h (2.9 km/h)	1.9 mph (1.8 mph)
1.0 Reverse	4.1 km/h (3.5 km/h)	2.5 mph (2.2 mph)
1.5 Reverse	5.4 km/h	3.4 mph
2.0 Reverse	7.1 km/h	4.4 mph
2.5 Reverse	9.5 km/h	5.9 mph
3.0 Reverse	12.2 km/h	7.6 mph

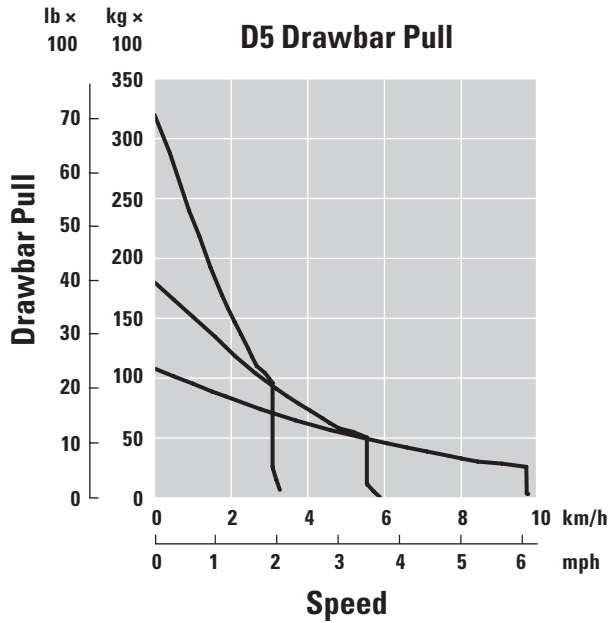
Maximum Drawbar Pull

1.0 Forward	320 kN	71,939 lbf
2.0 Forward	198 kN	44,512 lbf
3.0 Forward	113 kN	25,403 lbf

NOTE: Data between brackets are values for EU.

D5 Heavy Duty/Forestry Specifications

Drawbar Pull



Hydraulic Controls – Pressures

Maximum Implement Operating Pressure	25 000 kPa	3,626 psi
Maximum Steering Operating Pressure	45 000 kPa	6,527 psi

Hydraulic Controls – Pump

Pump Output		
Implement	127 L/min	33.5 gal/min
Steering	165 L/min	43.5 gal/min
Fan	49 L/min	12.9 gal/min
Lift Cylinder Flow	127 L/min	33.5 gal/min
Tilt Cylinder Flow	127 L/min	33.5 gal/min
Ripper Cylinder Flow	127 L/min	33.5 gal/min
Angle Cylinder Flow – VPAT	127 L/min	33.5 gal/min

D5 Heavy Duty/Forestry Specifications

D5 VPAT – Heavy Duty/Forestry

Operating Weight*	18 180 kg	40,087 lb
Shipping Weight**	17 950 kg	39,580 lb
Ground Pressure (ISO 16754)	50.4 kPa	7.3 psi
Undercarriage (Standard)	40 Section/ 7 Bottom Rollers	
1 Track Gauge	1890 mm	74.4 in
2 Width of Track Shoe (Standard)	610 mm	24 in
3 Width of Tractor	2500 mm	98.4 in
4 Length of Track on Ground	2562 mm	100.9 in
Ground Contact Area (ISO 16754)	3.5 m ²	5,469 in ²
Grouser Height (Moderate/Extreme Service)	57/66 mm	2.2/2.6 in
Ground Clearance	358 mm	14.1 in
5 Machine Height***	3163 mm	124.5 in
6 Length of Basic Tractor****	4689 mm	184.6 in

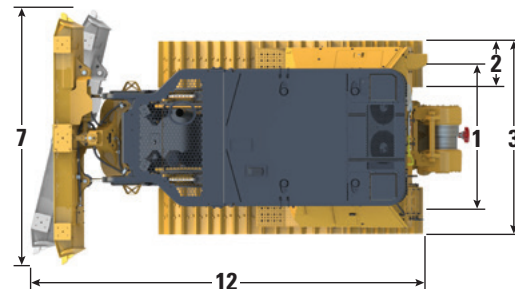
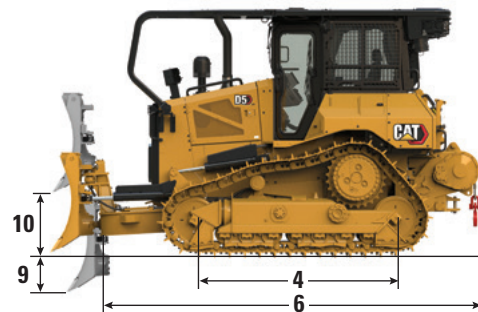
All dimensions above with Cat Abrasion undercarriage with Extreme Service shoes of maximum width for configuration, VPAT blade, and calculated per ISO 16754 unless otherwise specified.

*Operating weight includes full Heavy Duty/Forestry package, VPAT blade, lubricants, coolant, full fuel tank, ROPS/FOPS forestry cab, drawbar and 75 kg (165 lb) operator.

**Shipping weight includes full Heavy Duty/Forestry package with VPAT blade (aside), blade lift cylinders, C-Frame, lubricants, coolant, 10% fuel, ROPS/FOPS forestry cab, drawbar.

***Machine height from tip of grouser to top of Product Link Antenna installed on forestry sweeps.

****Length of Basic Tractor from the back of the forestry sweeps to the tip of the C-Frame.



Blade

Configuration	VPAT	
Capacity (ISO 9246)	3.5 m ³	4.6 yd ³
7 Width across End Bits	3272 mm	10.7 ft
Width without End Bits	3159 mm	10.4 ft
Width across End Bits (Blade Angled 24°)	2998 mm	118.0 in
Width without End Bits (Blade Angled 24°)	2908 mm	114.5 in
Maximum Blade Angle	24°	
8 Height	1261 mm	49.6 in
9 Dig Depth	559 mm	22.0 in
10 Lift Height	971 mm	38.2 in
11 Maximum Tilt at Blade Corner	257 mm	10.1 in
Maximum Tilt Angle	8.5°	
Pitch Adjustment	60° (cutting edge/ground, nominal); -2°/+4°	
12 Length of Machine (Blade Straight)	5081 mm	200 in
Length of Machine (Blade Angled 24°)	5770 mm	227 in
Blade Weight	1090 kg	2,403 lb

D5 Heavy Duty/Forestry Specifications

D5 SU – Heavy Duty/Forestry

Operating Weight*	18 520 kg	40,830 lb
Shipping Weight**	18 290 kg	40,322 lb
Ground Pressure (ISO 16754)	51.5 kPa	7.5 psi
Undercarriage	40 Section/ 7 Bottom Rollers	
1 Track Gauge	1890 mm	74.4 in
2 Width of Track Shoe (Standard)	610 mm	24 in
3 Width of Tractor (without trunnions)	2500 mm	98.4 in
4 Length of Track on Ground	2562 mm	100.9 in
Ground Contact Area (ISO 16754)	3.5 m ²	5,469 in ²
Grouser Height (Moderate/Extreme Service)	57/66 mm	2.2/2.6 in
Ground Clearance	358 mm	14.1 in
5 Machine Height***	3163 mm	124.5 in
6 Length of Basic Tractor****	4095 mm	161.2 in

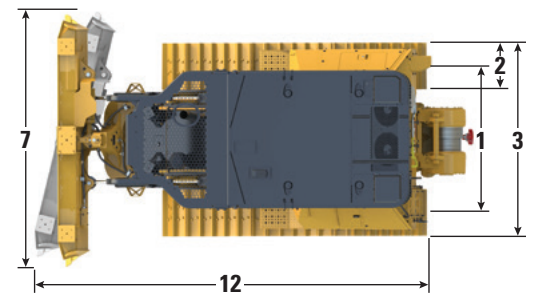
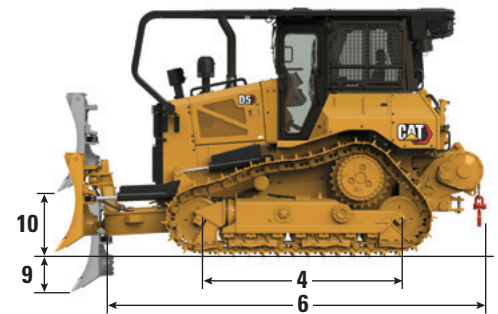
All dimensions above with Cat Abrasion undercarriage with Extreme Service shoes of maximum width for configuration, SU blade, and calculated per ISO 16754 unless otherwise specified.

*Operating weight includes full Heavy Duty/Forestry package, SU blade and HD push arms installation, lubricants, coolant, full fuel tank, ROPS/FOPS forestry cab, drawbar and 75 kg (165 lb) operator.

**Shipping weight includes full Heavy Duty/Forestry package, with SU blade and HD push arms installation (aside), blade lift cylinders, lubricants, coolant, 10% fuel, ROPS/FOPS forestry cab, drawbar.

***Machine height from tip of grouser to top of Product Link Antenna installed on forestry sweeps.

****Length of Basic Tractor from the back to the front of the forestry sweeps.



Standard VPAT Model Shown

Blade

Configuration	SU	
Capacity (ISO 9246)	4.3 m ³	5.6 yd ³
7 Width across End Bits	3164 mm	10.4 ft
Width without End Bits	3122 mm	10.2 in
8 Height	1338 mm	52.7 in
9 Dig Depth	544 mm	21.4 in
10 Lift Height	1104 mm	43.4 in
11 Maximum Tilt at Blade Corner	140 mm	5.5 in
Maximum Tilt Angle	8°	
Pitch Adjustment	±5.1°	
12 Length of Machine with SU Blade	5168 mm	203 in
Blade Weight (blade + HD push arms installed)	2050 kg	4,520 lb

D5 Heavy Duty/Forestry Specifications

D5 Heavy Duty/Forestry Features

- 1) Optional reversing fan helps remove debris with less maintenance time.
- 2) Optional engine air cleaner with turbine/screen delivers cleaner air to the power train.
- 3) High debris cab with impact-resistant polycarbonate doors.
- 4) Includes rear/side window screens and sweeps to help protect the machine and operator from debris.
- 5) Heavy duty guarding package with heavy duty bottom guards and fuel tank guard to help shield major machine components.



- 6) Quick access cab floor option offers tool-less access to the floor plate opening.
- 7) 12 premium LED lights illuminate the work area.
- 8) Heavy duty bulldozer package with guarding on lift and tilt lines.
- 9) Choose from a variety of blade and track shoe options to equip your dozer for the job.

D5 Heavy Duty/Forestry Specifications

Track Shoes

Some track shoes not available in all regions. Please consult your Cat dealer for details.

Standard			
560 mm (22 in)	Heavy Duty Extended Life (HDXL)	Moderate Service	
560 mm (22 in)	HDXL	Extreme Service	
560 mm (22 in)	Cat Abrasion	Extreme Service	
600 mm (24 in)	HDXL	Moderate Service	
600 mm (24 in)	HDXL	Moderate Service	Fine Grading
600 mm (24 in)	HDXL	Extreme Service	
600 mm (24 in)	HDXL	Extreme Service	Center Hole
610 mm (24 in)	Cat Abrasion	Moderate Service	Fine Grading
610 mm (24 in)	Cat Abrasion	Extreme Service	
610 mm (24 in)	Cat Abrasion	Extreme Service	Center Hole
LGP			
840 mm (33 in)	HDXL	Extreme Service	
840 mm (33 in)	HDXL	Extreme Service	Center Hole
840 mm (33 in)	Cat Abrasion	Moderate Service	
840 mm (33 in)	Cat Abrasion	Extreme Service	
860 mm (34 in)	HDXL	Extreme Service	
860 mm (34 in)	HDXL	Self-Cleaning	
860 mm (34 in)	Cat Abrasion	Extreme Service	

D5 Heavy Duty/Forestry Specifications

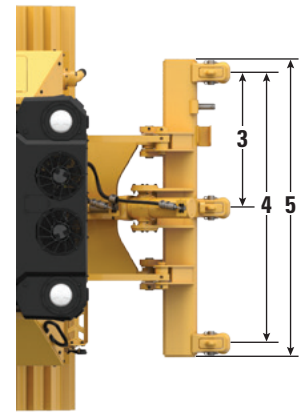
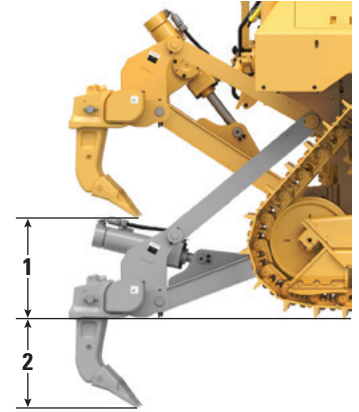
Dimensions – Rear Attachments

Add the following to the total length of the machine when these rear attachments are installed.

D5	Drawbar		Winch		Ripper		Striker Box	
Push Arm and VPAT Dozers	16 mm	0.6 in	446 mm	17.6 in	1060 mm	41.7 in	152 mm	6 in

Ripper

Type	Fixed Parallelogram	
Weight with Three Shanks	1393 kg	3,071 lb
1 Maximum Clearance, Raised (Shank Tip)		
D5 VPAT/Push Arms	404 mm	15.9 in
D5 LGP VPAT	518 mm	20.4 in
2 Maximum Penetration		
Standard	552 mm	21.7 in
LGP	437 mm	17.2 in
3 Pocket Spacing	1000 mm	3 ft 3.4 in
4 Shank Gauge	2 m	6 ft 7 in
Shank Section	73 mm × 176 mm	2.9 in × 6.9 in
Number of Pockets	3	
5 Overall Beam Width	2202 mm	86.7 in
Beam Cross Section	219 mm × 254 mm	8.6 in × 10.0 in
Maximum Penetration Force		
Standard	51.6 kN	11,600 lbf
LGP	43 kN	9,667 lbf
Maximum Pryout Force		
Standard	211.2 kN	47,480 lbf
LGP	170 kN	38,217 lbf



D5 Heavy Duty/Forestry Specifications

Winch

Winch Model	PA55 Standard Speed	
Weight*	1277 kg	2,815 lb
Oil Capacity	73 L	19.3 gal
Winch and Bracket Length	1145 mm	45.1 in
Winch Case Width	975 mm	38.4 in
Drum Diameter	254 mm	10 in
Drum Width	315 mm	12.4 in
Flange Diameter	504 mm	19.8 in
Drum Capacity – 22 mm (0.88 in)	88 m	288 ft 9 in
Winch Drive	Mechanical	
Control	Electric	
Overall Width	975 mm	38.4 in
Rope Diameter (recommended)	19 mm	0.75 in
Cable Ferrule Size (O.D. × Length)	54 mm × 67 mm	2.1 in × 2.6 in
Maximum Bare Drum		
Line Pull	31 388 kg*	69,200 lb*
Line Speed	43 m/min	141 ft/min
Maximum Full Drum		
Line Pull	23 359 kg*	54,100 lb*
Line Speed	66 m/min	210 ft/min

Winch Model	PA55 Slow Speed	
Weight*	1277 kg	2,815 lb
Oil Capacity	73 L	19.3 gal
Winch and Bracket Length	1145 mm	45.1 in
Winch Case Width	975 mm	38.4 in
Drum Diameter	254 mm	10 in
Drum Width	315 mm	12.4 in
Flange Diameter	504 mm	19.8 in
Drum Capacity – 22 mm (0.88 in)	88 m	288 ft 9 in
Winch Drive	Mechanical	
Control	Electric	
Overall Width	975 mm	38.4 in
Rope Diameter (recommended)	19 mm	0.75 in
Cable Ferrule Size (O.D. × Length)	54 mm × 67 mm	2.1 in × 2.6 in
Maximum Bare Drum		
Line Pull	31 388 kg*	69,200 lb*
Line Speed	16 m/min	53 ft/min
Maximum Full Drum		
Line Pull	31 388 kg*	69,200 lb*
Line Speed	28 m/min	91 ft/min

*Weight: Includes pump, operator controls, oil, mounting brackets and spacers.

Slow and standard speed winches are available.

Standards

ROPS/FOPS/OPS

- ROPS (Rollover Protective Structure) offered by Caterpillar for the machine meets ROPS criteria ISO 3471:2008.
- FOPS (Falling Object Protective Structure) meets ISO 3449:2005 Level II.
- OPS (Operator Protective Structure) screens meets OPS criteria per ISO 8084:2003 and WCB G604:2011.

Brakes

- Brakes meet the standard ISO 10265:2008.

Sound Level Information

Hearing protection may be needed when the machine is operated with an open operator station, in a noisy environment, with a cab that is not properly maintained, or when the doors and windows are open for extended periods of time.

Sound Level		Test Method
Operator Sound Pressure Level	76 dB(A)	"ISO 6396:2008" ⁽¹⁾
	76 dB(A)*	
Exterior Sound Power Level	110 dB(A)	"ISO 6395:2008" ⁽²⁾
	110 dB(A)*	"ISO 6395:1988" ⁽²⁾

*For machines required to meet applicable regional regulations of Ukraine, United Kingdom, and Countries that Adopt the "EU Directives."

⁽¹⁾The measurement was conducted at 70% of the maximum engine cooling fan speed. The sound level may vary at different engine cooling fan speeds. The measurement was conducted with the cab doors and the cab windows closed. The cab was properly installed and maintained.

⁽²⁾The measurement was conducted at 70% of the maximum engine cooling fan speed. The sound level may vary at different engine cooling fan speeds.

The sound levels listed above include both measurement uncertainty and uncertainty due to production variation.

Vibration Levels

Maximum Hand/Arm*	
ISO 5349:2001	2.5 m/s ²
Maximum Whole Body*	
ISO/TR25398:2006	0.5 m/s ²
Seat Transmissibility Factor	
ISO 7096:2000 – spectral class EM6	<0.7

- Values are for an experienced operator in a dozing application, consult the Operating and Maintenance Manual for further details.

Advanced Cabin Filtration

Operator Cabin

- Distributed HVAC ducting with automatic temperature control and blower speed provides ultimate operator comfort with less user input.
- Reduced maintenance of the condenser core with automatic reversing fans.
- Cat Advanced Cabin Filtration is standard.

Cat Advanced Cabin Filtration

- Operator protection from respirable particulate (0.3-10-micron size).
- Sustainably pressurized cab (U.S. Silica compliant).
- Reduced maintenance with longer life, high efficiency filters.
- Protection for all cabin components: electronics, etc.
- Helps meet U.S. Occupational Safety and Health Administration Silica Rule Table 1 requirements for operator cabs.
- Multi-tiered filter offerings for optional efficiency upgrades. Contact Cat dealer for availability.
 - MERV 16 – Standard Equipment
 - HEPA
 - Activated Carbon + HEPA
 - ABEK1 + HEPA

D5 Heavy Duty/Forestry Specifications

Dozer Technology Features

Assist technology features to help operators of varied experience levels get the job done faster and more accurately. Grade and Command offerings help further enhance your productivity, efficiency and job site safety.

The cab is Third Party Grade Control Ready, equipped with CAN interface, harness pass throughs and mounting features to make it easier to install the grade control system of your choice.

ARO with Assist Package

Attachment Ready Option (ARO)	ARO provides wiring and mounting provisions for dealer installation of Grade with 3D, AccuGrade, UTS, or other grade control systems.
Cat Grade with Slope Assist	Slope Assist automatically maintains pre-established blade position without a GNSS/GPS signal – no additional hardware or software needed. For machines with 3D, operators can easily switch back and forth from full 3D automatics to Slope Assist.
Steer Assist	Steer Assist automates track and blade tilt steering. Helps reduce operator fatigue by automatically maintaining straight travel with light loads or heavy loads on flat ground and cross slopes. No GNSS/GPS required.
Stable Blade	Stable Blade works seamlessly with operator inputs to help produce a smoother surface when operating manually.
Slope Indicate	Slope Indicate is included in the main machine display and shows side slope and uphill/downhill grades to help operators with slope work.
Blade Load Monitor	Blade Load Monitor gives you real-time feedback on current load versus the optimal blade load based on your ground conditions. Actively monitors machine load and track slip to help you reach optimal pushing capacity. ¹
Traction Control	Traction Control automatically reduces track slip to save you time, fuel and track wear. ¹
AutoCarry™	AutoCarry automates blade lift to help you maintain consistent blade load and help reduce track slip. ¹

Grade 3D with Assist Package

Includes all features from the ARO with Assist Package listed above, plus:

Cat Grade with 3D	Factory integrated Cat Grade with 3D uses GNSS/GPS to control the blade so you can get to design plan faster. Low profile antennas are integrated into the cab roof and GNSS/GPS receivers are mounted inside the cab for better protection. ²
Steer Assist 3D	Automatically follow guidance lines from site design plans (or Infield designs) under light load or heavy load. ²
Dedicated Touchscreen Grade Display	Full-color Grade operator interface is intuitive and easier to use. The 254 mm (10 in) touchscreen uses an Android OS platform and operates like a smart phone.

Remote Control/Cat Command

Remote Control Ready Cab (Standard)	Cab is Remote Control Ready from the factory with external connector for dealer installation of the Cat Command remote control system.
Command for Dozing ² (Optional)	Cat Command remote control technology provides full dozer maneuverability from a safe distance when working in hazardous environments. Command offers the choice of line-of-sight consoles or long-distance operator stations (non-line-of-sight).

¹Feature not operational indoors or in areas where a GPS signal is not available.

²Requires Software Enabled Attachment (SEA) installation when not configured from the factory.

Note: Grade and Assist technologies, except Slope Indicate, Blade Load Monitor and Traction Control, are not compatible with Angle blades or specialty blades from Cat Work Tools. Please consult with your Cat dealer for details.

D5 Heavy Duty/Forestry Standard and Optional Equipment

Standard and Optional Equipment

Standard and optional equipment may vary. Consult your Cat dealer for details.

	Standard	Optional		Standard	Optional
POWER TRAIN			OPERATOR ENVIRONMENT		
Cat C7.1 diesel engine	✓		Premium, Heavy Duty/Forestry cab with impact resistant polycarbonate doors, sliding side windows and adjustable armrests	+	
Fully-automatic 3-speed transmission:	✓		Full-color 10-inch (254 mm) liquid crystal touchscreen display	✓	
– Automatic directional and downshift			Integrated rearview camera	✓	
– Controlled throttle, load compensated			In-display key machine features	✓	
– Infinite ground speed adjustment			Application Profile	✓	
– Programmable/selectable bi-directional shifting			Cloth seat	✓	
Air-to-air aftercooler (ATAAC)	✓		Deluxe leather heated/ventilated seat		✓
Aluminum bar plate radiator	✓		Electrohydraulic implement and steering controls	✓	
Automatic glowplugs	✓		Joystick control – ARO		✓
Differential steering	✓		Fresh air filter	✓	
Engine air precleaner	✓		Powered fresh air filter precleaner		✓
Engine air precleaner with turbine/screen		*	Cab mounted modular Heating/Ventilation/Air Conditioning (HVAC) system	✓	
Engine idle shutdown	✓		Rearview mirror	✓	
Enhanced Power Train Control:	✓		Retractable 76 mm (3 in) seatbelt	✓	
– Hill Decent Control			4-point seatbelt kit (dealer installed)		✓
– Hill Hold			Grab rails/tie offs on both sides of cab roof	✓	
– Decel Brake Pedal			Communication radio ready		✓
– Steering Radius Control			Radio, AM/FM/Aux/USB/Bluetooth		✓
Extended life coolant	✓		Added storage areas	✓	
Ether starting aid		✓	Cup holders	✓	
Final Drives – Arctic		✓	Dash foot pads	✓	
Final Drives – Standard or LGP	✓		Glove box	✓	
Fuel priming pump	✓		Lunchbox storage	✓	
Fuel water separator	✓		Wipers	✓	
Hydraulic demand fan	✓				
Hydraulic reversing fan		✓			
Sound suppression (EU only)		✓			
Debris resistant radiator cores		✓			

*Recommended

(continued on next page)

D5 Heavy Duty/Forestry Standard and Optional Equipment

Standard and Optional Equipment *(continued)*

Standard and optional equipment may vary. Consult your Cat dealer for details.

	Standard	Optional		Standard	Optional
GUARDING AND SCREENS			ELECTRICAL		
Front and cab sweeps with canopy	+		12 premium LED lights with guarding	+	
Side and rear hinged screens	+		Backup alarm	✓	
Heavy duty guarding package with heavy duty bottom guards and fuel tank guard	+		Beacon warning light		✓
Fuel tank cover guard	+		Converter: one 15 Amp, 12V outlet	✓	
UNDERCARRIAGE			SERVICE AND MAINTENANCE		
Standard or Low Ground Pressure (LGP) undercarriage	✓		30-minute cab removal	✓	
Heavy Duty (HDXL with DuraLink™)		*	Adjustable pitch link (VPAT)	✓	
Cat Abrasion Undercarriage		✓	Centralized, remote mounted pressure taps	✓	
Carrier rollers	✓		Ecology drains	✓	
Hydraulic track adjusters	✓		Extended service intervals (500 hours engine, 1,000 hours power train)	✓	
Lifetime lubricated track and rollers	✓		Fast fuel fill		✓
Moderate service track shoes (see chart on page 39)	✓		Ground level service center (remote electrical disconnect, secondary shutdown switch, hour meter)	✓	
Extreme service track shoes (see chart on page 39)		✓	High-speed oil change		✓
Redesigned track roller frame	✓		Heavy duty perforated radiator doors, louvered and hinged	✓	
Track roller frame guiding guards: center, partial or full (NOTE: center guiding guards standard on LGP machine)		✓	Rear access ladder	✓	
BULLDOZERS			REAR WORK LIGHT		
Heavy duty bulldozer package with guarding on lift and tilt lines		✓	Rear work light		✓
VPAT dozer package	✓		Refilling fuel pump (EU only)		✓
SU dozer package		✓	REMOVABLE ENGINE ENCLOSURES		
BLADES			Removable engine enclosures, perforated and hinged		
VPAT		✓	S·O·S SM sampling ports	✓	
Semi-Universal		✓	Shovel holder	✓	
Foldable VPAT		✓	UNDER HOOD WORK LIGHT		
VPAT with brush guard		✓	Under hood work light		✓
HYDRAULICS					
Load sensing hydraulics	✓				
Independent steering and implement pumps	✓				

(continued on next page)

+Included in Forestry Package

*Recommended

D5 Heavy Duty/Forestry Standard and Optional Equipment

Standard and Optional Equipment

Standard and optional equipment may vary. Consult your Cat dealer for details.

	Standard	Optional		Standard	Optional
BATTERIES, STARTERS, ALTERNATORS AND COOLANT			CAT TECHNOLOGY		
95 Amp alternator	✓		Slope Indicate	✓	
24 Volt starter	✓		ARO with Assist Package		✓
Arctic engine coolant, – 51° C (–60° F)		✓	– Attachment Ready Option (ARO)		
Engine coolant, –37° C (–35° F)	✓		– Slope Assist		
Cold Weather package: heavy duty battery, heavy duty starter, ether starting aid, jacket water heater		✓	– Steer Assist		
Two maintenance free 12-volt batteries (950 cca) (24-volt system)	✓		– Stable Blade		
ATTACHMENTS			– Blade Load Monitor		
Ripper-ready rear hydraulics		✓	– Traction Control		
Dual ripper/winch control		✓	– AutoCarry		
Ripper with straight or curved shanks		✓	Grade 3D with Assist Package		✓
Winch:		✓	– Full-color 10-inch (254 mm) touchscreen grade display		
– PACCAR PA55, low speed PTO			– Steer Assist 3D		
– PACCAR PA55, standard speed PTO			– Grade receivers and antennas		
– Fairlead Assembly; 3-roller, fits PA55 winches			– Grade Software Enabled Attachment (SEA)		
– Retrofit kit (4th roller); fits PA55 winches			– ARO with Assist features		
Drawbar		✓	Third Party Grade Control Ready Cab	✓	
Rear striker box with striker bar		✓	Compatibility with radios and base stations from Trimble, Topcon, and Leica	✓	
			Capability to install 3D grade systems from Trimble, Topcon, and Leica	✓	
			Product Link, Cellular	✓	
			Product Link – Dual Cellular/Satellite		✓
			Remote Flash/Troubleshoot	✓	
			Grade Connectivity		✓
			Operator ID	✓	
			Machine Security – Passcode	✓	
			Machine Security – Bluetooth		✓
			Remote Control Ready	✓	
			Cat Command for Dozing		✓



D5

Fire Suppression Dozer

Take on the demands of fire fighting and prevention with factory-installed equipment designed to help protect the operator and the machine in harsh applications.

Next Generation Performance

- Harness added weight and horsepower than D6N to take on a wide range of tasks.
- Fully automatic 3-speed transmission gives you seamless acceleration, faster cycle times and more nimble movement around the site.
- No need to shift – just set your desired ground speed and the dozer adjusts for maximum fuel efficiency and power to the ground.
- Completely redesigned, more spacious cab for a whole new standard in comfort and productivity.
- More glass area, steeper hood angle provide 30% better forward visibility than the previous model.

Fire Suppression Dozer

- Fire Dozer cab with tempered/laminated glass, silicone sealing between cab and sheet metal, and enhanced cab air filtration.
- In-cab emergency fuel shut-off.
- Heavy duty guarding throughout, including full sweeps, screens and heavy duty bottom guards.
- Fire resistant, wrapped hydraulic hoses and harnesses.
- Heat insulated fuel, A/C, air, DEF lines.
- Muffler extension flush with sweeps top plate.
- Light packages:
 - 4 × 4,200 lumens heat resistant lights (body and lens), plus insulated harness and switch provisions to add 12 lights (for customer customization).
 - Additional 8 × 4,200 lumens heat resistant lights (body and lens).
 - Additional 4 × 3,770 lumens amber heat resistant lights (body and lens) for enhanced vision in the smoke.
- XtraRear standard gauge undercarriage (43 shoes) with one roller added at back for increased stability on steep slopes.
- Brush guard blade equipped with blade to hardnose cables protecting C-frame lines.
- Quick access door on cab floor for easy cleanout and to quickly check power train compartment in case of fire.
- Hydraulic reversing fan.
- Choice of Standard engine or a special engine arrangement for emergency vehicles (U.S. State and Federal fire agencies only) compliant with 40 CFR 89-908.
- Fire resistant EcoSafe® oil.
- Built-in fire suppression ready system (includes water tank, pump and hose. Does not include belly guard sprinkling system).

For complete information, please see Standard/Optional equipment list on page 59.



D5 Fire Suppression Dozer Specifications

Engine

Engine Model	Cat C7.1	
Emissions	U.S. EPA Tier 4 Final/ EU Stage V/Japan 2014/ Korea Tier 5	
Power Train	Fully automatic 3-speed	
Net Power (1,770 rpm)		
ISO 9249/SAE J1349	127 kW	170 hp
ISO 9249 (DIN)	172 mhp	
Engine Power – Maximum (1,600 rpm)		
ISO 14396	148 kW	198 hp
ISO 14396 (DIN)	201 mhp	
Gross Power – Maximum (1,600 rpm)		
SAE J1995	151 kW	202 hp
Bore	105 mm	4.1 in
Stroke	135 mm	5.3 in
Displacement	7.1 L	433 in ³

- Net power advertised is the power available at the engine flywheel when the engine is equipped with a fan, air cleaner, clean emissions module and alternator.
- Advertised power is tested per the specified standard in effect at the time of manufacture.
- No derating required up to 3000 m (9,840 ft) altitude, beyond 3000 m (9,840 ft) automatic derating occurs.
- Cat diesel engines are required to use ULSD (ultra-low sulfur diesel fuel with 15 ppm of sulfur or less) or ULSD blended with the following lower-carbon intensity fuels up to:
 - ✓ 20% biodiesel FAME (fatty acid methyl ester)*
 - ✓ 100% renewable diesel, HVO (hydrogenated vegetable oil) and GTL (gas-to-liquid) fuels

Refer to guidelines for successful application. Please consult your Cat dealer or “Caterpillar Machine Fluids Recommendations” (SEBU6250) for details.

**Engines with no aftertreatment devices can use higher blends, up to 30% biodiesel.*

Air Conditioning System

The air conditioning system on this machine contains the fluorinated greenhouse gas refrigerant R134a (Global Warming Potential = 1430). The system contains 1.36 kg of refrigerant which has a CO₂ equivalent of 1.946 metric tonnes.

Fluid/Refill Capacities

Fuel Tank	315 L	83.2 gal
DEF Tank	16 L	4.2 gal
Cooling System	41 L	10.8 gal
Engine Crankcase	18 L	4.8 gal
Power Train	160 L	42.3 gal
Roller Frames Standard/LGP (each)	18/27 L	4.8/7.1 gal
Final Drives (each)	8 L	2.1 gal
Hydraulic System	80 L	21.1 gal
Optional Water Tank	84 L	22.2 gal

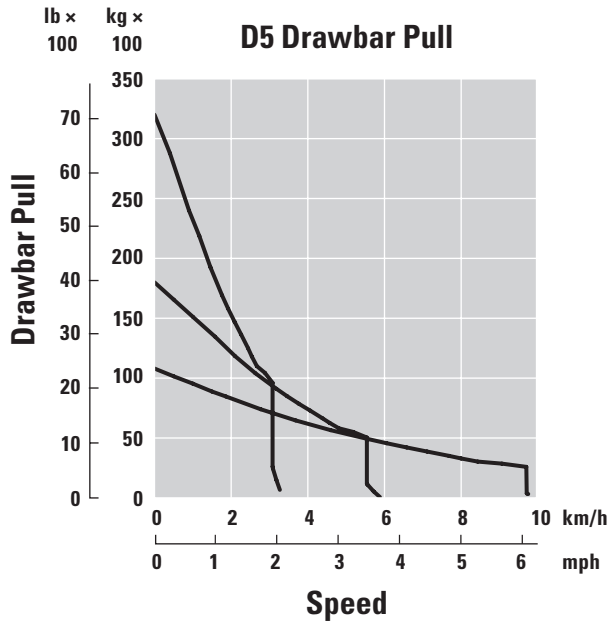
Transmission

0.5 Forward	2.5 km/h (2.4 km/h)	1.6 mph (1.5 mph)
1.0 Forward	3.3 km/h (3.0 km/h)	2.1 mph (1.9 mph)
1.5 Forward	4.4 km/h	2.7 mph
2.0 Forward	5.8 km/h	3.6 mph
2.5 Forward	7.5 km/h	4.7 mph
3.0 Forward	9.8 km/h	6.1 mph
0.5 Reverse	3.1 km/h (2.9 km/h)	1.9 mph (1.8 mph)
1.0 Reverse	4.1 km/h (3.5 km/h)	2.5 mph (2.2 mph)
1.5 Reverse	5.4 km/h	3.4 mph
2.0 Reverse	7.1 km/h	4.4 mph
2.5 Reverse	9.5 km/h	5.9 mph
3.0 Reverse	12.2 km/h	7.6 mph
Maximum Drawbar Pull		
1.0 Forward	320 kN	71,939 lbf
2.0 Forward	198 kN	44,512 lbf
3.0 Forward	113 kN	25,403 lbf

NOTE: Data between brackets are values for EU.

D5 Fire Suppression Dozer Specifications

Drawbar Pull



Hydraulic Controls – Pressures

Maximum Implement Operating Pressure	25 000 kPa	3,626 psi
Maximum Steering Operating Pressure	45 000 kPa	6,527 psi

Hydraulic Controls – Pump

Pump Output		
Implement	127 L/min	33.5 gal/min
Steering	165 L/min	43.5 gal/min
Fan	49 L/min	12.9 gal/min
Lift Cylinder Flow	127 L/min	33.5 gal/min
Tilt Cylinder Flow	127 L/min	33.5 gal/min
Ripper Cylinder Flow	127 L/min	33.5 gal/min
Angle Cylinder Flow – VPAT	127 L/min	33.5 gal/min

D5 Fire Suppression Dozer Specifications

D5 LGP VPAT – Fire Suppression

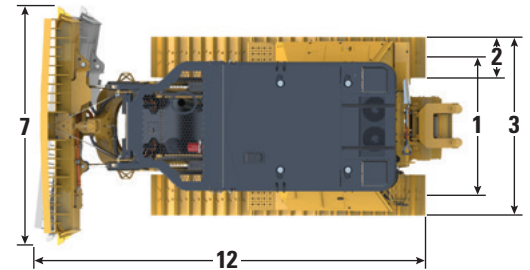
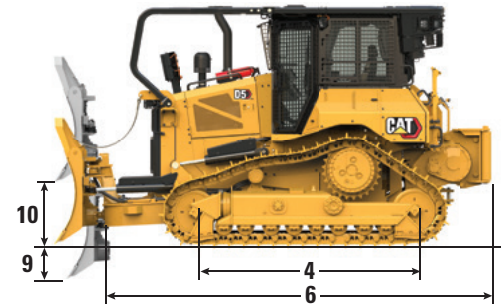
Operating Weight*	22 621 kg	49,870 lb
Shipping Weight**	20 656 kg	45,538 lb
Ground Pressure (ISO 16754)	38.9 kPa	5.51 psi
Undercarriage (Standard)	46 Section/ 8 Bottom Rollers	
1 Track Gauge	2160 mm	85.0 in
2 Width of Track Shoe (Standard)	840 mm	33 in
3 Width of Tractor	3000 mm	118.1 in
4 Length of Track on Ground	3116 mm	122.7 in
Ground Contact Area (ISO 16754)	5.7 m ²	8.9 in ²
Grouser Height (Moderate Service)	66 mm	2.59 in
Ground Clearance	473 mm	18.6 in
5 Machine Height***	3274 mm	128.9 in
6 Length of Tractor	6065 mm	238.8 in

All dimensions above with Cat Abrasion undercarriage with Extreme Service shoes of maximum width for configuration, VPAT blade, and calculated per ISO 16754 unless otherwise specified.

*Operating weight includes lubricants, coolant, full fuel tank, ROPS/FOPS cab, Fire dozer guarding including sweeps and grills on all windows but cab doors and front windshield, fire suppression ready system, enhanced cab air filtration, engine pre-cleaner, blade with brush guard, winch and 75 kg (165 lb) operator.

**Shipping weight includes lubricants, coolant, full fuel tank, ROPS/FOPS cab, Fire dozer guarding including sweeps and grills on all windows but cab doors and front windshield, fire suppression ready system, enhanced cab air filtration, engine pre-cleaner, winch and 10% fuel.

***Machine height from tip of grouser to top of Product Link Antenna. With Extreme Service, add 9 mm (0.4 in).



Standard VPAT Model Shown

Blade

Configuration	LGP VPAT with Brush Rack	
Capacity (ISO 9246)	6.31 m ³	7.85 yd ³
7 Width across End Bits	4080 mm	13.4 ft
Width without End Bits	3969 mm	156.3 in
Width across End Bits (Blade Angled 24°)	3736 mm	147.1 in
Width without End Bits (Blade Angled 24°)	3640 mm	143.3 in
Width across End Bits (Blade Angled 33° for transportation purpose only)	—	—
Maximum Blade Angle	24°	
8 Height	1465 mm	57.67 in
9 Dig Depth	580 mm	22.8 in
10 Lift Height	1051 mm	41.4 in
11 Maximum Tilt at Blade Corner	371 mm	14.6 in
Maximum Tilt Angle	8.5°	
Pitch Adjustment	60° (cutting edge/ground, nominal); -2°/+4°	
12 Length of Machine (Blade Straight)	5350 mm	211 in
Length of Machine (Blade Angled 24°, without fuel tank guard)	6137 mm	242 in
VPAT Blade foldable, angled 33° for transportation purpose only	—	—
Weight (Blade)	1462 kg	3,223 lb

D5 Fire Suppression Dozer Specifications

D5 VPAT – Fire Suppression

Machine equipped with a standard undercarriage:

Operating Weight*	20 356 kg	44,877 lb
Shipping Weight**	19 017 kg	41,925 lb
Undercarriage (Standard)	40 Section/ 7 Bottom Rollers	

Ground Pressure (ISO 16754)	57.5 kPa	8.27 psi
4 Length of Track on Ground	2562 mm	100.9 in
Ground Contact Area (ISO 16754)	3.5 m ²	5,469 in ²

Machine equipped with XtraRear undercarriage:

Operating Weight****	20 627 kg	45,475 lb
Shipping Weight**	19 288 kg	42,522 lb
Undercarriage (Standard)	43 Section/ 8 Bottom Rollers	

Ground Pressure (ISO 16754)	57.5 kPa	8.27 psi
4 Length of Track on Ground	3659 mm	144.05 in
Ground Contact Area (ISO 16754)	3.52 m ²	5.5 in ²

1 Track Gauge	1890 mm	74.4 in
2 Width of Track Shoe (Standard)	610 mm	24 in
3 Width of Tractor	2500 mm	98.4 in
Grouser Height (Moderate Service)	57 mm	2.2 in
Ground Clearance	358 mm	14.1 in
5 Machine Height***	3085 mm	121.5 in
6 Length of Basic Tractor	3680 mm	144.9 in

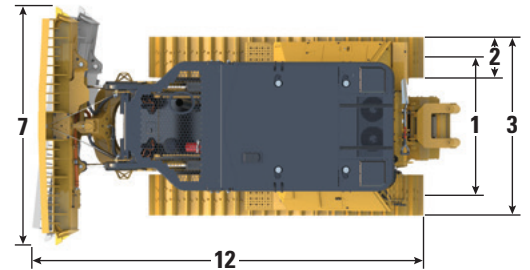
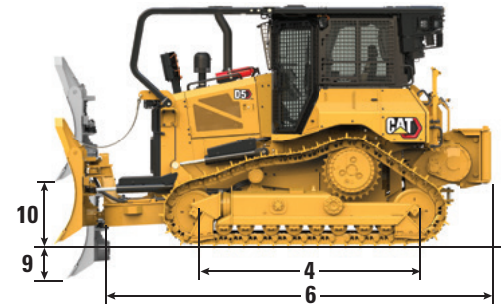
All dimensions above with Cat Abrasion undercarriage with Extreme Service shoes of maximum width for configuration, VPAT blade, and calculated per ISO 16754 unless otherwise specified.

*Operating weight includes lubricants, coolant, full fuel tank, ROPS/FOPS cab, Fire dozer guarding including sweeps and grills on all windows but cab doors and front windshield, fire suppression ready system, enhanced cab air filtration, engine pre-cleaner, blade with brush guard, winch and 75 kg (165 lb) operator.

**Shipping weight includes lubricants, coolant, full fuel tank, ROPS/FOPS cab, Fire dozer guarding including sweeps and grills on all windows but cab doors and front windshield, fire suppression ready system, enhanced cab air filtration, engine pre-cleaner, winch and 10% fuel.

***Machine height from tip of grouser to top of Product Link™ Antenna. With Extreme Service, add 9 mm (0.4 in).

****Operating weight includes lubricants, coolant, full fuel tank, ROPS/FOPS cab, Fire dozer guarding including sweeps and grills on all windows but cab doors and front windshield, XtraRear U/C, fire suppression ready system, enhanced cab air filtration, engine pre-cleaner, blade with brush guard, winch and 75 kg (165 lb) operator.



(Please see next page for blade specifications.)

D5 Fire Suppression Dozer Specifications

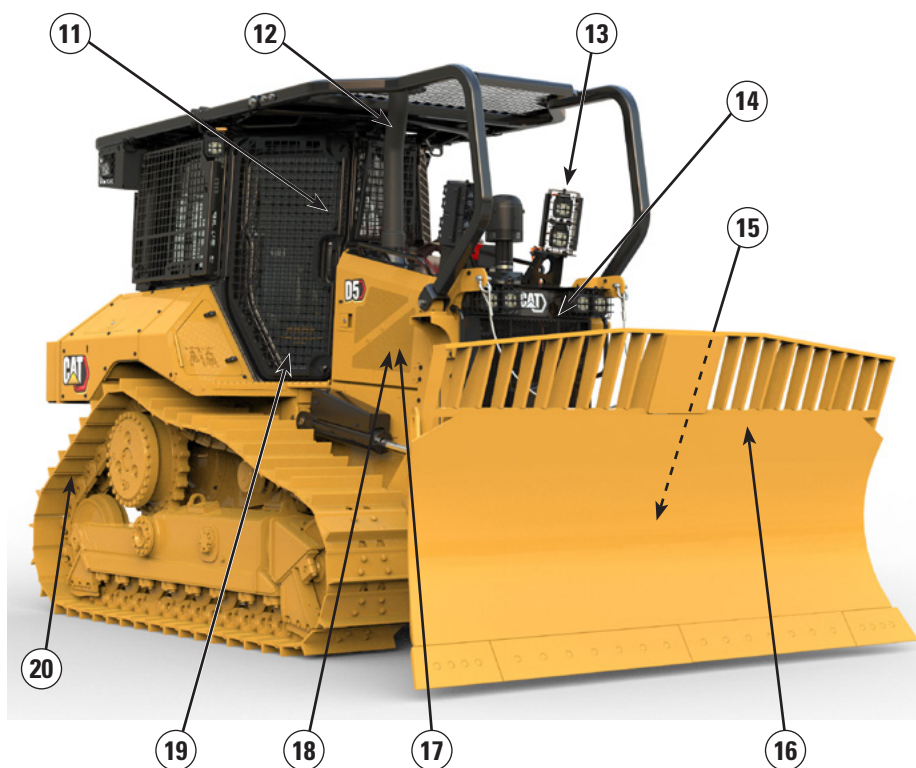
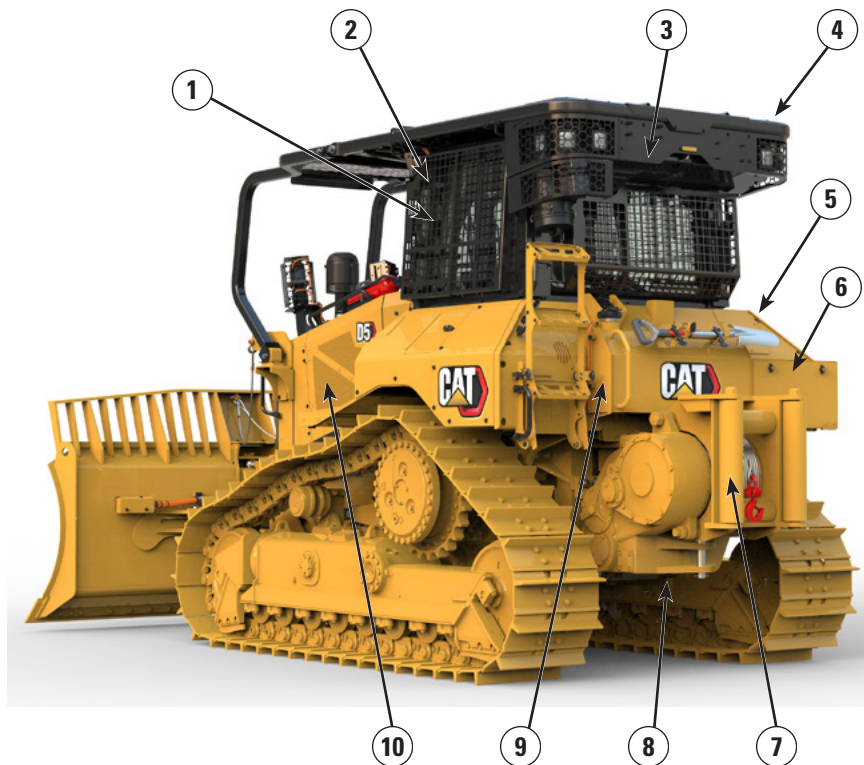
Blade

Configuration	VPAT with Brush Rack	
Capacity (ISO 9246)	6.15 m ³	7.85 yd ³
7 Width across End Bits	3272 mm	10.7 ft
Width without End Bits	3159 mm	10.4 ft
Width across End Bits (Blade Angled 24°)	2998 mm	118.0 in
Width without End Bits (Blade Angled 24°)	2908 mm	114.5 in
Maximum Blade Angle	24°	
8 Height	1626 mm	64.01 in
9 Dig Depth	559 mm	22.0 in
10 Lift Height	971 mm	38.2 in
11 Maximum Tilt at Blade Corner	257 mm	10.1 in
Maximum Tilt Angle	8.5°	
Pitch Adjustment	60° (cutting edge/ground, nominal); -2°/+4°	
12 Length of Machine (Blade Straight)	5000 mm	197 in
Length of Machine (Blade Angled 24°, without fuel tank guard)	5621 mm	221 in
Blade Weight	1292 kg	2,848 lb

D5 Fire Suppression Dozer Specifications

D5 Fire Suppression Dozer Features

- 1) Fire Dozer cab with sealed and tempered/laminated doors/windows, solid side windows.
- 2) Fan controls, additional switches controlling 8 pairs of lights, in-cab emergency fuel shut-off.
- 3) Enhanced cab air filtration: equipped with an ember screen, turbine pre-cleaner with a HEPA filter (filters particles below 0.3 micro-meters). Combination of active carbon and HEPA filter available from Cat Parts.
- 4) Full sweeps with roof extension.
- 5) Silicone sealing between cab and sheet metal.
- 6) Heavy duty guarding package with heavy duty fenders, battery box, enclosure and fuel tank guard.
- 7) Dual control winch/ripper.
- 8) Heavy duty bottom guards, all three 16 mm (0.6 in) thick.
- 9) Built-in fire suppression ready system (includes water tank, pump and hose. Does not include belly guard sprinkling system).
- 10) Fire resistant, wrapped hydraulic hoses and harnesses. Heat insulated fuel, A/C, air and DEF lines.



- 11) Front windshield and cab doors equipped with screens.
- 12) Muffler flush with roof extension.
- 13) Light packages:
 - 4 × 4,200 lumens heat resistant lights (body and lens), plus insulated harness and switch provisions to add 12 lights (for customer customization).
 - Additional 8 × 4,200 lumens heat resistant lights (body and lens).
 - Additional 4 × 3,770 lumens amber heat resistant lights (body and lens) for enhanced vision in the smoke.
- 14) Hydraulic reversing fan.
- 15) Front towing eye.
- 16) Brush guard blade equipped with blade to hardnose cables protecting C-frame lines.
- 17) Special engine arrangement for emergency vehicles (U.S. only) compliant with 40 CFR 89-908.
- 18) Fire resistant EcoSafe oil.
- 19) Quick access door on cab floor.
- 20) XtraRear undercarriage combining a standard gauge and a track roller frame extended at rear with one roller added for unmatched stability on steep slopes and loose material when machine is configured with a winch.

D5 Fire Suppression Dozer Specifications

Track Shoes

Some track shoes not available in all regions. Please consult your Cat dealer for details.

Standard			
560 mm (22 in)	Heavy Duty Extended Life (HDXL)	Moderate Service	
560 mm (22 in)	HDXL	Extreme Service	
560 mm (22 in)	HDXL	Extreme Service	XtraRear
600 mm (24 in)	HDXL	Moderate Service	
600 mm (24 in)	HDXL	Moderate Service	Fine Grading
600 mm (24 in)	HDXL	Extreme Service	
600 mm (24 in)	HDXL	Extreme Service	Center Hole
LGP			
840 mm (33 in)	HDXL	Extreme Service	
840 mm (33 in)	HDXL	Extreme Service	Center Hole
860 mm (34 in)	HDXL	Extreme Service	

D5 Fire Suppression Dozer Specifications

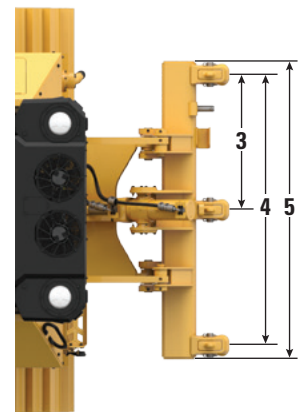
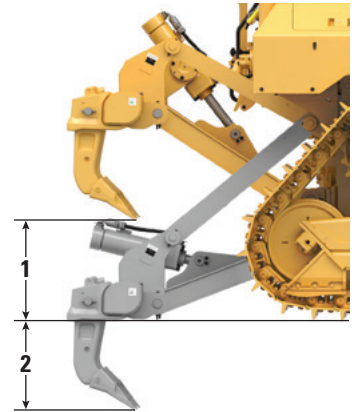
Dimensions – Rear Attachments

Add the following to the total length of the machine when these rear attachments are installed.

D5	Drawbar		Winch		Ripper		Waste Striker Box	
Push Arm and VPAT Dozers	16 mm	0.6 in	446 mm	17.6 in	1060 mm	41.7 in	152 mm	6 in

Ripper

Type	Fixed Parallelogram	
Weight with Three Shanks	1393 kg	3,071 lb
1 Maximum Clearance, Raised (Shank Tip)		
D5 VPAT/Push Arms	404 mm	15.9 in
D5 LGP VPAT	518 mm	20.4 in
2 Maximum Penetration		
Standard	552 mm	21.7 in
LGP	437 mm	17.2 in
3 Pocket Spacing	1000 mm	3 ft 3.4 in
4 Shank Gauge	2 m	6 ft 7 in
Shank Section	73 mm × 176 mm	2.9 in × 6.9 in
Number of Pockets	3	
5 Overall Beam Width	2202 mm	86.7 in
Beam Cross Section	219 mm × 254 mm	8.6 in × 10.0 in
Maximum Penetration Force		
Standard	51.6 kN	11,600 lbf
LGP	43 kN	9,667 lbf
Maximum Pryout Force		
Standard	211.2 kN	47,480 lbf
LGP	170 kN	38,217 lbf



D5 Fire Suppression Dozer Specifications

Winch

Winch Model	PA55 Standard Speed	
Weight*	1277 kg	2,815 lb
Oil Capacity	73 L	19.3 gal
Winch and Bracket Length	1145 mm	45.1 in
Winch Case Width	975 mm	38.4 in
Drum Diameter	254 mm	10 in
Drum Width	315 mm	12.4 in
Flange Diameter	504 mm	19.8 in
Drum Capacity – 22 mm (0.88 in)	88 m	288 ft 9 in
Winch Drive	Mechanical	
Control	Electric	
Overall Width	975 mm	38.4 in
Rope Diameter (recommended)	19 mm	0.75 in
Cable Ferrule Size (O.D. × Length)	54 mm × 67 mm	2.1 in × 2.6 in
Maximum Bare Drum		
Line Pull	31 388 kg*	69,200 lb*
Line Speed	43 m/min	141 ft/min
Maximum Full Drum		
Line Pull	23 359 kg*	54,100 lb*
Line Speed	66 m/min	210 ft/min

Winch Model	PA55 Slow Speed	
Weight*	1277 kg	2,815 lb
Oil Capacity	73 L	19.3 gal
Winch and Bracket Length	1145 mm	45.1 in
Winch Case Width	975 mm	38.4 in
Drum Diameter	254 mm	10 in
Drum Width	315 mm	12.4 in
Flange Diameter	504 mm	19.8 in
Drum Capacity – 22 mm (0.88 in)	88 m	288 ft 9 in
Winch Drive	Mechanical	
Control	Electric	
Overall Width	975 mm	38.4 in
Rope Diameter (recommended)	19 mm	0.75 in
Cable Ferrule Size (O.D. × Length)	54 mm × 67 mm	2.1 in × 2.6 in
Maximum Bare Drum		
Line Pull	31 388 kg*	69,200 lb*
Line Speed	16 m/min	53 ft/min
Maximum Full Drum		
Line Pull	31 388 kg*	69,200 lb*
Line Speed	28 m/min	91 ft/min

*Weight: Includes pump, operator controls, oil, mounting brackets and spacers.

Slow and standard speed winches are available.

D5 Fire Suppression Dozer Specifications

Standards

ROPS/FOPS/OPS

- ROPS (Rollover Protective Structure) offered by Caterpillar for the machine meets ROPS criteria ISO 3471:2008.
- FOPS (Falling Object Protective Structure) meets ISO 3449:2005 Level II.
- OPS (Operator Protective Structure) screens meets OPS criteria per ISO 8084:2003 and WCB G604:2011.

Brakes

- Brakes meet the standard ISO 10265:2008.

Sound Level Information

Hearing protection may be needed when the machine is operated with an open operator station, in a noisy environment, with a cab that is not properly maintained, or when the doors and windows are open for extended periods of time.

Sound Level		Test Method
Operator Sound Pressure Level	76 dB(A)	"ISO 6396:2008" ⁽¹⁾
	76 dB(A)*	
Exterior Sound Power Level	110 dB(A)	"ISO 6395:2008" ⁽²⁾
	110 dB(A)*	"ISO 6395:1988" ⁽²⁾

*For machines required to meet applicable regional regulations of Ukraine, United Kingdom, and Countries that Adopt the "EU Directives."

⁽¹⁾The measurement was conducted at 70% of the maximum engine cooling fan speed. The sound level may vary at different engine cooling fan speeds. The measurement was conducted with the cab doors and the cab windows closed. The cab was properly installed and maintained.

⁽²⁾The measurement was conducted at 70% of the maximum engine cooling fan speed. The sound level may vary at different engine cooling fan speeds.

The sound levels listed above include both measurement uncertainty and uncertainty due to production variation.

Vibration Levels

Maximum Hand/Arm*	
ISO 5349:2001	2.5 m/s ²
Maximum Whole Body*	
ISO/TR25398:2006	0.5 m/s ²
Seat Transmissibility Factor	
ISO 7096:2000 – spectral class EM6	<0.7

- Values are for an experienced operator in a dozing application, consult the Operating and Maintenance Manual for further details.

Advanced Cabin Filtration

Operator Cabin

- Distributed HVAC ducting with automatic temperature control and blower speed provides ultimate operator comfort with less user input.
- Reduced maintenance of the condenser core with automatic reversing fans.
- Cat Advanced Cabin Filtration is standard.

Cat Advanced Cabin Filtration

- Operator protection from respirable particulate (0.3-10-micron size).
- Sustainably pressurized cab (U.S. Silica compliant).
- Reduced maintenance with longer life, high efficiency filters.
- Protection for all cabin components: electronics, etc.
- Helps meet U.S. Occupational Safety and Health Administration Silica Rule Table 1 requirements for operator cabs.
- Multi-tiered filter offerings for optional efficiency upgrades. Contact Cat dealer for availability.
 - MERV 16 – Standard Equipment
 - HEPA
 - Activated Carbon + HEPA
 - ABEK1 + HEPA

D5 Fire Suppression Dozer Specifications

Dozer Technology Features

Assist technology features to help operators of varied experience levels get the job done faster and more accurately. Remote Control/Command offerings help further enhance your productivity, efficiency and job site safety.

The cab is Third Party Grade Control Ready, equipped with CAN interface, harness pass throughs and mounting features to make it easier to install the grade control system of your choice.

Assist Package

Cat Grade with Slope Assist	Slope Assist automatically maintains pre-established blade position without a GNSS/GPS signal – no additional hardware or software needed. For machines with 3D, operators can easily switch back and forth from full 3D automatics to Slope Assist.
Steer Assist	Steer Assist automates track and blade tilt steering. Helps reduce operator fatigue by automatically maintaining straight travel with light loads or heavy loads on flat ground and cross slopes. No GNSS/GPS required.
Stable Blade	Stable Blade works seamlessly with operator inputs to help produce a smoother surface when operating manually.
Slope Indicate	Slope Indicate is included in the main machine display and shows side slope and uphill/downhill grades to help operators with slope work.
Blade Load Monitor	Blade Load Monitor gives you real-time feedback on current load versus the optimal blade load based on your ground conditions. Actively monitors machine load and track slip to help you reach optimal pushing capacity. ¹
Traction Control	Traction Control automatically reduces track slip to save you time, fuel and track wear. ¹
AutoCarry™	AutoCarry automates blade lift to help you maintain consistent blade load and help reduce track slip. ¹

Remote Control/Cat Command

Remote Control Ready Cab (Standard)	Cab is Remote Control Ready from the factory with external connector for dealer installation of the Cat Command remote control system.
Command for Dozing ² (Optional)	Cat Command remote control technology provides full dozer maneuverability from a safe distance when working in hazardous environments. Command offers the choice of line-of-sight consoles or long-distance operator stations (non-line-of-sight).

¹Feature not operational indoors or in areas where a GPS signal is not available.

²Requires Software Enabled Attachment (SEA) installation when not configured from the factory.

Note: Assist technologies, except Slope Indicate, Blade Load Monitor and Traction Control, are not compatible with Angle blades or specialty blades from Cat Work Tools. Please consult with your Cat dealer for details.

D5 Fire Suppression Dozer Standard and Optional Equipment

Standard and Optional Equipment

Standard and optional equipment may vary. Consult your Cat dealer for details.

	Standard	Optional		Standard	Optional
POWER TRAIN			OPERATOR ENVIRONMENT		
Cat C7.1 diesel engine	✓		Fire Dozer cab with sealed and tempered doors/windows, solid side windows, emergency fuel shut-off inside cab, hinged rear and side screens, rear sweeps with roof top, eight dashboard switches to control lights, beacon/strobe light ready.	+	
Fully-automatic 3-speed transmission:	✓		Laminated safety glass – all windows		✓
– Automatic directional and downshift			Silicone sealing between cab and fenders	+	
– Controlled throttle, load compensated			Fresh air filter	✓	
– Infinite ground speed adjustment			Powered fresh air filter precleaner		✓
– Programmable/selectable bi-directional shifting			Enhanced cab air filtration: equipped with an ember screen, turbine pre-cleaner with a HEPA filter (filters particles below 0.3 micro-meters).		*
Air-to-air aftercooler (ATAAC)	✓		Enhanced cab air filtration: combination of active carbon and HEPA filter. (Available from Cat Parts)		*
Aluminum bar plate radiator	✓		Full-color 10-inch (254 mm) liquid crystal touchscreen display	✓	
Automatic glowplugs	✓		Integrated rearview camera	✓	
Differential steering	✓		In-display key machine features	✓	
Engine air precleaner	✓		Application Profile	✓	
Engine air precleaner with turbine/screen		✓	Cloth seat	✓	
Engine idle shutdown	✓		Deluxe leather heated/ventilated seat		✓
Enhanced Power Train Control:	✓		Electrohydraulic implement and steering controls	✓	
– Hill Decent Control			Cab mounted modular Heating/Ventilation/Air Conditioning (HVAC) system	✓	
– Hill Hold			Rearview mirror	✓	
– Decel Brake Pedal			Retractable 76 mm (3 in) seatbelt	✓	
– Steering Radius Control			4-point seatbelt kit (dealer installed)		✓
Extended life coolant	✓		Grab rails/tie offs on both sides of cab roof	✓	
Ether starting aid		✓	Communication radio ready		✓
Final Drives – Standard or LGP	✓		Radio, AM/FM/Aux/USB/Bluetooth		✓
Fuel priming pump	✓		Added storage areas	✓	
Fuel water separator	✓		Cup holders	✓	
Hydraulic demand fan	✓		Dash foot pads	✓	
Hydraulic reversing fan	+		Glove box	✓	
Sound suppression (EU only)		✓	Lunchbox storage	✓	
Debris resistant radiator cores		✓	Wipers	✓	
Emergency vehicle engine arrangement: compliant with EPA (40 CFR 89-908) and CARB requirements with overheat protection and DEF level check permanently deactivated. Available U.S. only, to Governmental customers working full time in emergency situations.		✓			

+Included in Fire Suppression package

*Recommended

(continued on next page)

D5 Fire Suppression Dozer Standard and Optional Equipment

Standard and Optional Equipment *(continued)*

Standard and optional equipment may vary. Consult your Cat dealer for details.

	Standard	Optional		Standard	Optional
GUARDING AND SCREENS			BULLDOZERS		
Heavy duty bottom guards for fire dozers (all bottom guards including the front are 16 mm/0.6" thick)	+		VPAT dozer package		✓
Heavy duty fenders, battery box, enclosure and fuel tank guard	+		Fire suppression bulldozer package – lift and tilt lines equipped with thermal and abrasion wrap	+	
Wrapped, fire resistant fluid lines, wiring harnesses and battery cables	+		BLADES		
Full sweeps	+		VPAT		✓
Front windshield and cab door hinged screens		✓	Foldable VPAT		✓
Muffler extension flush with sweeps top plate	+		VPAT blade equipped with brush guard and two cables protecting the front hydraulic lines and cylinder rods		*
Grab handles		✓	HYDRAULICS		
UNDERCARRIAGE			Load sensing hydraulics	✓	
Standard or Low Ground Pressure (LGP) undercarriage	✓		Independent steering and implement pumps	✓	
Heavy Duty (HDXL with DuraLink)		*	ELECTRICAL		
XtraRear undercarriage (43 shoes) with one roller added at back for added stability on steep slopes. Recommended only in mountainous areas and dozer crawling on loose material. Standard gauge only		✓	Base light package: 4 × 4,200 lumens heat resistant lights (casing and lens), plus insulated harness. Two forward mounted, two rear facing.	+	
Carrier rollers	✓		Optional light package: additional 8×4,200 lumens bright heat resistant lights (body and glass) + 4×3,370 lumens amber heat resistant lights (body and glass)		*
Hydraulic track adjusters	✓		Wiring harnesses heat insulated to connect up to 8 pairs of lights independently	+	
Lifetime lubricated track and rollers	✓		Backup alarm	✓	
Moderate service track shoes (see chart on page 54)	✓		Beacon warning light		✓
Extreme service track shoes (see chart on page 54)		✓	Converter: one 15 Amp, 12V outlet	✓	
Redesigned track roller frame	✓		Forward warning horn	✓	
Track roller frame guiding guards: center, partial or full (NOTE: center guiding guards standard on LGP machine)		✓			

+Included in Fire Suppression package

*Recommended

(continued on next page)

D5 Fire Suppression Dozer Standard and Optional Equipment

Standard and Optional Equipment (continued)

Standard and optional equipment may vary. Consult your Cat dealer for details.

	Standard	Optional		Standard	Optional
SERVICE AND MAINTENANCE			ATTACHMENTS		
Quick access cab floor	+		Dual control winch/ripper heat insulated	+	
30-minute cab removal	✓		Winch:		✓
Adjustable pitch link (VPAT)	✓		– PACCAR PA55, low speed PTO		
Centralized, remote mounted pressure taps	✓		– PACCAR PA55, standard speed PTO		
Ecology drains	✓		– Fairlead Assembly; 3-roller, fits PA55 winches		
Extended service intervals (500 hours engine, 1,000 hours power train)	✓		– Retrofit kit (4th roller); fits PA55 winches		
Fast fuel fill		✓	Drawbar		✓
Fire retardant EcoSafe oil		✓	One front towing eye and 6 tie-downs	+	
Ground level service center (remote electrical disconnect, secondary shutdown switch, hour meter)	✓		On-board fire suppression ready system equipped with 84 liter/22 gal stainless steel tank, pump activated from operator seat, hose with hand spray nozzle and valve ready to plug in a sprinkling system. System can be further customized by dealer or customer.		*
High-speed oil change		✓	CAT TECHNOLOGY		
Heavy duty perforated radiator doors, louvered and hinged	✓		Slope Indicate	✓	
Rear access ladder	✓		Assist – Non-ARO	+	
Refilling fuel pump (EU only)		✓	– Slope Assist		
Removable engine enclosures, perforated and hinged	✓		– Steer Assist		
S·O·S SM sampling ports	✓		– Stable Blade		
Shovel holder	✓		– Blade Load Monitor		
Under hood work light		✓	– Traction Control		
BATTERIES, STARTERS, ALTERNATORS AND COOLANT			– AutoCarry		
95 Amp alternator	✓		Third Party Grade Control Ready Cab	✓	
24 Volt starter	✓		Compatibility with radios and base stations from Trimble, Topcon, and Leica	✓	
Arctic engine coolant, – 51° C (–60° F)		✓	Capability to install 3D grade systems from Trimble, Topcon, and Leica	✓	
Engine coolant, –37° C (–35° F)	✓		Product Link, Cellular	✓	
Cold Weather package: heavy duty battery, heavy duty starter, ether starting aid, jacket water heater		✓	Product Link – Dual Cellular/Satellite		✓
Two maintenance free 12-volt batteries (950 cca) (24-volt system)	✓		Remote Flash/Troubleshoot	✓	
			Grade Connectivity		✓
			Operator ID	✓	
			Machine Security – Passcode	✓	
			Machine Security – Bluetooth		✓
			Remote Control Ready	✓	
			Cat Command for Dozing		✓

+Included in Fire Suppression package

*Recommended



オフロード法2014年
基準適合

For more complete information on Cat products, dealer services, and industry solutions, visit us on the web at www.cat.com

© 2022 Caterpillar
All rights reserved

Materials and specifications are subject to change without notice. Featured machines in photos may include additional equipment. See your Cat dealer for available options.

CAT, CATERPILLAR, LET'S DO THE WORK, their respective logos, "Caterpillar Corporate Yellow," the "Power Edge" and Cat "Modern Hex" trade dress as well as corporate and product identity used herein, are trademarks of Caterpillar and may not be used without permission. VisionLink is a trademark of Caterpillar Inc., registered in the United States and in other countries.

Based on the Labor, Safety and Health Laws in Japan, employer of small construction equipment are required to provide specific training for all operators on machines with machine weight less than 3 metric ton. For machines greater than 3 metric ton, operator needs to obtain operator license certification from a Government approved registered training school.

AEXQ2535-03 (09-2022)
Replaces AEXQ2535-02
Build Number: 17B
(Aus-NZ, Chile, Europe, Japan,
N Am, S Korea, Turkey)

