



www.FGWilson.com

37 – 220 KVA RANGE
Performance | Durability | Serviceability



Designed for Today's World 



The world we live in never stops changing, so neither do we. Our newest power range, 37 – 220 kVA, provides reliable power for today's world with a competitive offering that delivers everything you need.

Providing unrivalled quality, the 37 – 220 kVA range of products offers a trusted performance with an enhanced choice of options, optimising the range for a variety of diverse applications and environments.

Over the past 50 years FG Wilson has been providing power generation systems to meet your needs – today is no different.

Designed for Today's World.

Open Set Range

The 37 – 220 kVA range has been redesigned to deliver a more competitive offering that includes an enhanced choice of key options. The range continues to employ the power and efficiency delivered by the world-renowned Perkins engines whilst delivering optimal fuel efficiencies.



The FG Wilson alternator is available as standard throughout the range, a trusted performance is guaranteed.



The control panel tower, mounted on the side of the generator set, provides full access to all components and wiring. Cable access is gained directly underneath the control panel for ease of installation.



The mounting arrangement provides the most frequently serviced parts mounted on the same side of the generator set and includes grouped fuel connections. This arrangement is conducive to minimal maintenance times and maximum generator set running time.



Providing lifting points as standard, aiding transportation and installation, the compact tank base is designed for 8 hours running at full load in prime applications.



Constructed from high-grade, heavy-duty steel and further protected by powder coat paint, ensuring durability and maximum corrosion resistance, the base frame provides a solid foundation within a more compact footprint. The range also offers an enhanced choice of base frame options depending on your needs.



The robust steel enclosure structure is protected by an advanced powder coat paint and can be further protected with the galvanised steel option if desired. Side hinged doors and lift-off end panels provide optimal access for all servicing and maintenance tasks.

CAL Enclosed Range

The introduction of the CAL enclosure offers a high quality product with excellent sound attenuation and protection for a diverse range of applications. The strong, clean design of the CAL enclosure is available in either mild or galvanised steel, allowing you to further customise this range to suit your needs.



Side hinged doors, on each side of the enclosure, provide ample access to all necessary components during installation and servicing. Lift-off hinges enable the doors to be removed at an angle of 90°, facilitating easy servicing in confined installation spaces.



The robust main roof features a flush-mounted rain cap with compression seal, allowing access to the radiator fill whilst providing protection against water ingress.



The enclosure incorporates unique modular air handling units that contribute to a significant reduction in noise output. Manufactured from a high-grade composite material, they offer optimum corrosion resistance, whilst adding to the enclosure's strong, stylish design.



Cable access is gained directly underneath the control panel via the end of the base frame for ease of installation.

Designed for today's world...

...in Finance

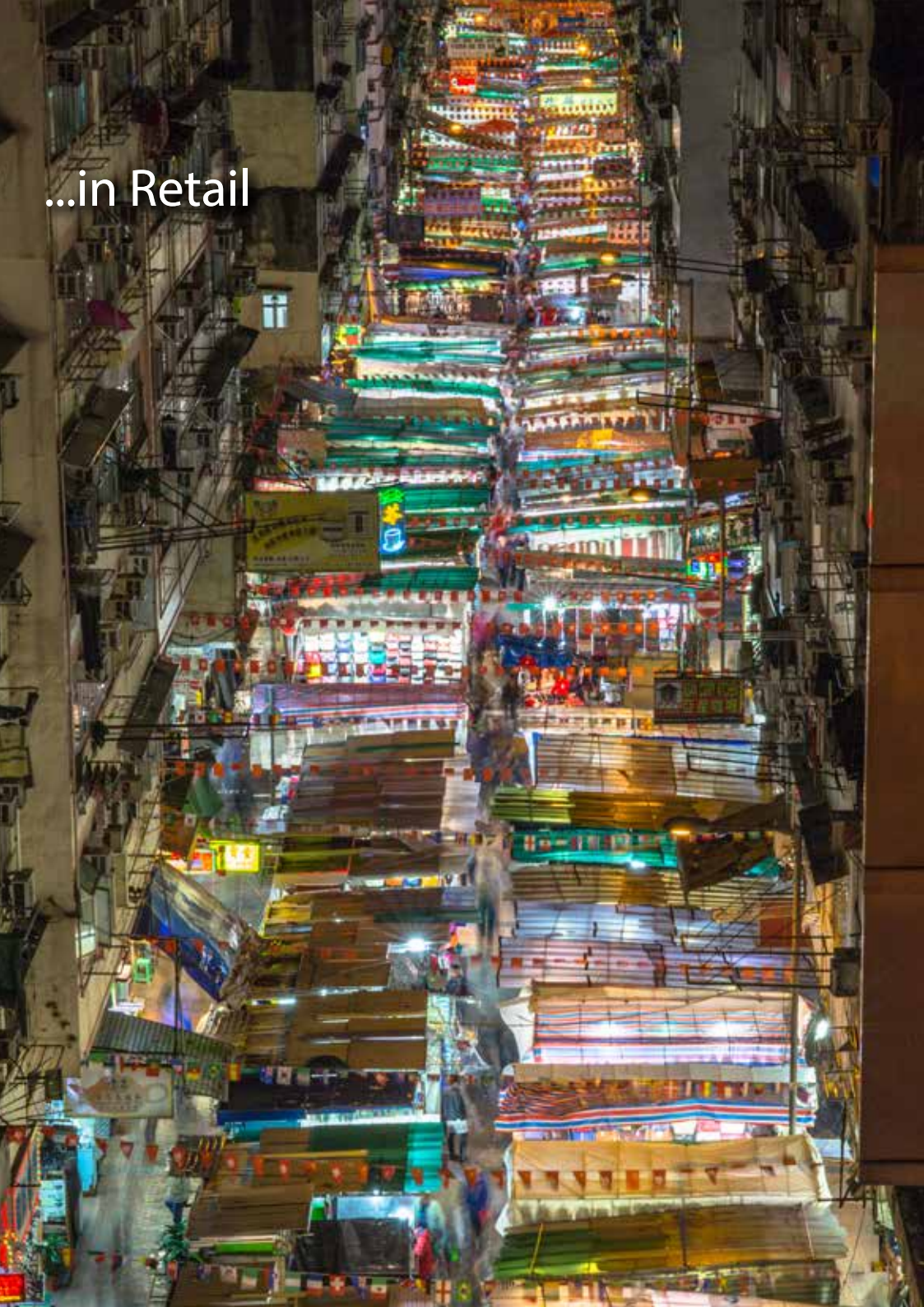


...in Healthcare





...in Industry



...in Retail

FG Wilson FG 100

Provided as standard, the FG Wilson FG 100 digital control panel offers simple, intuitive control of your generator set. Key information including diagnostics, is displayed via the LCD screen and LED's using universally recognised symbols.



FG 100

- Engine & AC Monitoring
- Simple USB firmware upgrades
- Run/Auto keys with LED indicators
- Spare Digital Input/Output channels
- Active Voltage sender functionality
- Configuration of parameters via front panel

Deep Sea DSE 4520

The DSE4520 is a compact Auto Mains (Utility) Failure Control Module that has been developed to provide an outstanding range of features within a compact enclosure. Monitoring engine speed, oil pressure, coolant temperature, frequency, voltage, current, power and fuel level, the modules will give comprehensive engine and alternator protection. This will be indicated on the largest back-lit LCD icon display in its class via an array of warning, electrical trip and shutdown alarms.



Deep Sea DSE 4520

- Auto start controller
- Auto transfer controls
- Power metering
- Optional DSE 857 module – RS485 remote comms



Technical Data

37 – 220 kVA Range

37 – 220 kVA MODELS						
50 Hz						
Model	Engine	Alternator	Prime		Standby	
			kVA	kW	kVA	kW
P37-1A	1103AA-33G1	FG17A30				
P50-1A	1103AA-33TG2	FG17A36	45	36	50	40
P66-1A	1103AA-33TG2	FG21A50	59.7	47.7	65	52
P88-1A	1104AA-44TG2	FG21A70				
P110-1A	1104AA-44TAG2	FG21A80				
P150-1A	1106AA-70TG1	FG26A120	135	108	150	120
P165-1A	1106AA-70TAG2	FG26A120	150	120	164.4	131.5
P200-1A	1106AA-70TAG3	FG26A150				
P217-1A	1106A-70TAG4 *	FG26A160	199.4	159.5	217.8	174

DIMENSIONS								
Model	Open Set				Enclosed Set (CAL)			
	Length (mm)	Width (mm)	Height (mm)	Weight (kg)	Length (mm)	Width (mm)	Height (mm)	Weight (kg)
P37-1A								
P50-1A	1680	760	1331	776				
P66-1A	1680	760	1331	850				
P88-1A								
P110-1A								
P150-1A	2450	1010	1544	1583				
P165-1A	2450	1010	1544	1596				
P200-1A								
P217-1A	2510	1010	1640	1591				

Ratings are based on maximum generator set output - this may vary depending on voltage code selected.

Standard and Optional Features

37 – 220 kVA Range

STANDARD FEATURES

Electronic governor*

Engine-mounted battery charging alternator

Engine-mounted fuel and water separator

Low oil pressure protection

High water temperature protection

Air filters

Alternator with IP21 protection

Automatic voltage regulator

Robust steel constructed base frame

8 hr fuel tank

Base frame lifting points

Coolant drain valve

Lube oil drain valve

FG Wilson control panel

3-POLE circuit breaker

Exhaust stub pipe and gasket

Radiator fan and charging alternator guards

50% antifreeze (protection to -36°C)

Battery connection cables, tray and clamp

Emergency Stop Button

*Model Dependent

OPTIONAL FEATURES*

Panel mounted audible alarm

Sound attenuated CAL enclosure with galvanised option

Coolant heater

Anti-condensation heater*

Volt free contacts for common alarm

Volt free contacts for generator set running

Lead-acid battery (dry)

Coastal ingress protection

Voltage adjust potentiometer

Panel mounted audible alarm

4-POLE breakers

Overload via alarm switch on breaker

Static battery charger

ONE Global Standard

FG Wilson has built its reputation on providing you with reliable, fuel efficient diesel and gas generator sets.

Our ONE Global Quality Standard ensures that every FG Wilson generator set is designed and manufactured to the highest UK standards. With world-class production processes replicated at all our manufacturing facilities, each achieving ISO 9001 and ISO 14001 certification, we deliver a quality product every time.

With worldwide logistics that span the globe, and a distribution network of 370 Dealers in over 150 countries, we provide reliable power and ongoing support when and where you need it.





www.FGWilson.com
