

# 950 GC

WHEEL LOADER



**Engine Maximum Power**  
**Operating Weight**

169 kW (227 hp)  
19 069 kg (42,040 lb)

Cat® engine meets U.S. EPA Tier 4 Final, EU Stage V, Korea Stage V, and Japan 2014 emission standards.



The Cat® 950 GC Wheel Loader is designed specifically to handle all the jobs on your worksite from material handling and truck loading to general construction and stockpiling. This machine is purpose built to be just the right machine to get your everyday jobs done. Great machine performance combined with the low owning and operating costs makes the 950 GC the right choice for your business.

# CAT® 950 GC

PURPOSE BUILT



## WHEEL LOADERS MADE FOR MORE

Cat wheel loaders were built with efficiency in mind, offering you the best in:

- + RELIABILITY
- + DURABILITY
- + PRODUCTIVITY
- + FUEL EFFICIENCY

Experience higher performance while reducing costs and fuel consumption with Cat wheel loaders.

---

## POWERFUL EFFICIENCY

Low fuel consumption and exceptional production capabilities help you get the job done right for less.

---

## PRODUCTIVE RESULTS

Purpose built to handle all your jobsite requirements from material handling and truck loading to general construction and stockpiling.

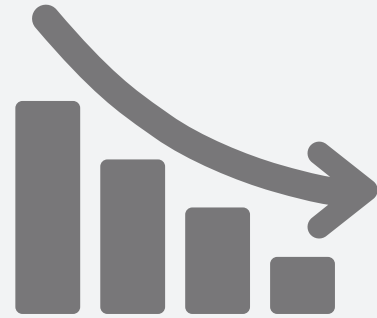
---

## EASY SERVICEABILITY

Our electrical and hydraulic service centers with additional key serviceability features make machine maintenance and in-field components quick, easy, and efficient.

# ECONOMICAL SAVINGS

**THE 950 GC IS THE  
SENSIBLE CHOICE  
FOR YOUR BUSINESS.**



**LOWER** **OWNING** **COSTS**

**OPERATING  
FUEL**





## POWERTRAIN

### POWERFUL EFFICIENCY

Staying ahead of the competition, Caterpillar offers a wide variety of cutting-edge technology and components that are specifically built to save time and reduce fuel costs.

#### ENGINE AND EMISSIONS

---

Powered by a Cat engine and certified to meet emission standards, these machines feature Engine Idle Management System (EIMS) and Auto Idle Shutdown (EIS) to minimize fuel consumption.

#### TRANSMISSION

---

The power-shift countershaft transmission features high contact ratio gears and heat-treated gears complemented by heavy duty bearings for transmission durability, fuel efficiency, and low noise and vibration levels during operation.

#### CONTROL VALVES

---

The proven Cat Electronic Long Range Transmission (ELRT) control valve allows full-power shifts and directional shift changes. The modulated shifts ensure a smooth ride, fast cycles, and extended component life.

#### DURABLE AXLES

---

Heavy-duty axles with inboard-planetary drives feature hydraulically activated wet-disc brakes. Limited-slip differentials are available for applications requiring increased traction.

#### ON-DEMAND FAN

---

Variable speed fan adjusts to meet the cooling requirements of the machine, lowering fuel consumption, noise levels, and radiator plugging. In cold operating conditions, an optional fan drive bypass valve allows the system to warm and match operating temperatures.

# PRODUCTIVE RESULTS

WORK SMART AND MOVE MORE

---

## PRODUCT LINK™

Track asset location, hours, fuel usage, diagnostic codes, idle time, and more to improve your productivity and lower your operating costs.

---

## Z-BAR LINKAGE

The proven Z-bar linkage combines digging efficiency with sharp visibility, resulting in excellent excavation, high breakout forces, and superior production capabilities.

---

## RIDE CONTROL SYSTEM

The optional ride control system improves ride, performance, and load retention when traveling over rough terrain and at higher speeds, lowering cycle times and boosting productivity.



---

## PERFORMANCE SERIES BUCKETS

Easy-to-load Performance Series Buckets improve material retention and reduce dig times, significantly improving productivity and fuel efficiency, resulting in unsurpassed production capabilities with increased fill factors – ranging from 100% to 115%.

---

## LOAD SENSING HYDRAULICS

Load sensing hydraulic system produces flow and pressure for the implement system only when needed, improving machine productivity and resulting in lower fuel consumption. An optional third single axis hydraulic function is also available to control a variety of work tools.

### CAT PAYLOAD KIT (Optional)\*

Track productivity from the cab with quick access to information such as truck target weights, loads, and totals.

- + PROVEN ACCURACY
- + FLEXIBLE INSTALLATION
- + EASY CALIBRATION AND SETUP
- + SIMPLE INSTALLATION: COMPARABLE TO THIRD PARTY PAYLOAD SYSTEMS

\*Not legal for trade.

TESTED, PROVEN, AND READY TO WORK.

# EASY SERVICEABILITY



---

## SERVICE CENTERS

Hydraulic and electrical service centers provide ground level access to numerous maintenance and service points, enhancing safety and convenience for operators and service technicians.

---

## GREASE POINTS

Grease fittings for hard-to-reach components are grouped conveniently for easy and quick preventive lubrication.

---

## CAT AUTOLUBE SYSTEM

The new optional Cat Autolube System has a useful one-button control and includes fault flash function.

---

## CATERPILLAR DESIGNED

Built on a long legacy of high performance and highly reliable wheel loaders, our machine components are designed and manufactured to Caterpillar quality standards.

---

## RENOWNED SUPPORT

Your Cat dealer is always available to help you maximize machine uptime by providing global parts support, trained technicians, and customer support agreements.

# OPERATOR ENVIRONMENT

## COMFORTABLE CAB, INTUITIVE CONTROLS

A comfortable operating environment and intuitive controls help to reduce the stresses of a demanding job.



### ENTRY AND EXIT

Ladders are standard on both sides of the machine for easy access to the cab from the left-hand side and service points from the right-hand side. The operator station is equipped with handrails for cab accessibility.



### DISPLAY AND INTERFACE

Simple to operate, the complete user interface has been designed as an intuitive system, allowing the operator to monitor machine operation.



### GREATER VISIBILITY

Extended windows with wide, flat, and distortion-free front windshield offer unmatched visibility, while spot mirrors and rear-vision camera extend the driver's view all around.



### EASY CONTROLS

The pilot-operated hydraulic controls deliver comfortable, low-effort operation. Single axis levers or joystick are available, and the adjustable steering column includes a manual shifter and turn signal lever.



### CLIMATE CONTROLLER

Air conditioning and louvered vents let the operator direct air flow, and the fresh air and recirculation cab air filters allow for superior filtration and easy cleaning.



### COMFORTABLE SEAT

The comfort cloth mechanical suspension seat provides a variety of adjustments and flexible arm and headrest. An air suspension seat with high-back and heating option is also available.

# SUPPORT ALL YOUR JOBSITE FUNCTIONS

For demanding applications, you need a wheel loader that is purpose built for the job. Cat work tools are engineered to handle all of your specific worksite needs.



## FUSION™ QUICK COUPLER

The Fusion Quick Coupler System allows machines to use a wide range of tools that can each be picked up by machines of varying sizes. Fusion is designed to integrate the work tool and the machine by pulling the coupler and tool closer to the loader, increasing overall lift capability.

- + Improved machine performance
- + Unsurpassed durability
- + Increased visibility



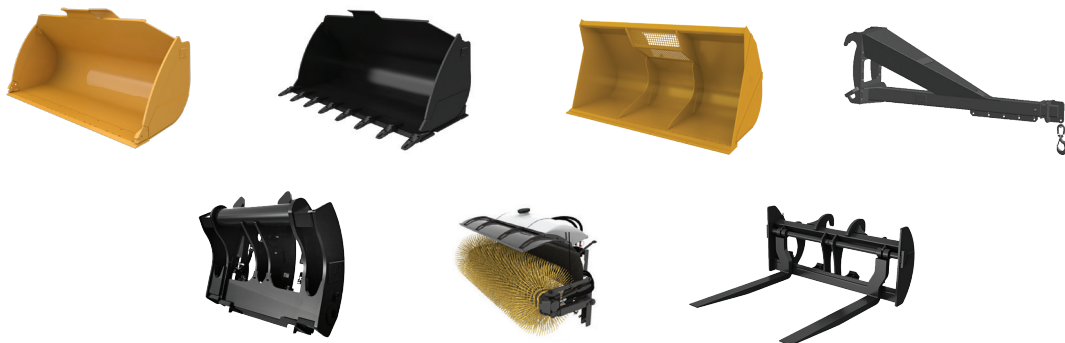
## PERFORMANCE SERIES BUCKETS

Performance Series Buckets use a system-based approach to balance bucket shape with the machine's lift and tilt capacity, weight, and linkage. A variety of work tools and bucket styles allow for advanced machine customization and easy loading.

- + Fuel efficient
- + Lower operating costs
- + Higher productivity

### Work Tool Attachments for All Support Functions on Your Jobsite

A variety of pin-on and coupler attachments are available for 950 GC applications. Cat work tools are durable, reliable, and designed for performance and efficiency with your Cat wheel loader.





# TECHNICAL SPECIFICATIONS

See [cat.com](http://cat.com) for complete specifications.

ENGINE		
Engine Model	Cat® C7.1	
Engine Power @ 2,000 rpm – ISO 14396:2002	179 kW	240 hp
ISO 14396:2002 (DIN)	243 hp (metric)	
Gross Power @ 2,000 rpm – SAE J1995:2014	180 kW	241 hp
SAE J1995:2014 (DIN)	245 hp (metric)	
Net Power @ 1,700 rpm – ISO 9249:2007, SAE J1349:2011	168 kW	225 hp
SAE J1349:2011 (DIN)	228 hp (metric)	
Engine Torque @ 1,400 rpm – ISO 14396:2002	1092 N·m	805 lbf·ft
Gross Torque @ 1,400 rpm – SAE J1995:2014	1099 N·m	811 lbf·ft
Net Torque @ 1,400 rpm – ISO 3294:2007, SAE J1349:2011, EEC 80/1269	1041 N·m	768 lbf·ft
Bore	105 mm	4.13 in
Stroke	135 mm	5.31 in
Displacement	7.01 L	428 in <sup>3</sup>

- Cat engine meets U.S. EPA Tier 4 Final, EU Stage V, Korea Stage V, and Japan 2014 emission standards.
  - The net power advertised is the power available at the flywheel when the engine is equipped with fan, alternator, air cleaner, and aftertreatment.
  - Cat diesel engines are required to use ULSD (ultra-low sulfur diesel fuel with 15 ppm of sulfur or less) or ULSD blended with the following lower-carbon intensity fuels up to:
    - 20% biodiesel FAME (fatty acid methyl ester)\*
    - 100% renewable diesel, HVO (hydrogenated vegetable oil) and GTL (gas-to-liquid) fuels
- Refer to guidelines for successful application. Please consult your Cat dealer or “Caterpillar Machine Fluids Recommendations” (SEBU6250) for details.  
 \* Engines with no aftertreatment devices can use higher blends, up to 100% biodiesel (for use of blends higher than 20% biodiesel, consult your Cat dealer).

WEIGHTS		
Operating Weight	19 069 kg	42,040 lb

- Weight and static tipping loads and operating weights shown are based on a machine configuration with Maxam 23.5R25 tires, full fluids, operator, standard counterweight, standard ambient arrangement, limited slip differential axles (front/rear), roading fenders, ride control and a 3.1 m<sup>3</sup> (4.0 yd<sup>3</sup>) general purpose bucket with BOCE.

BUCKET CAPACITIES		
Bucket Range	2.7- 4.4 m <sup>3</sup>	3.5- 5.75 yd <sup>3</sup>

SOUND		
Operator Sound Pressure Level (ISO 6396:2008)	73 dB(A)	
Exterior Sound Power Level (ISO 6395:2008)	109 dB(A)	
Operator Sound Pressure Level (ISO 6396:2008)*	72 dB(A)	
Exterior Sound Power Level (ISO 6395:2008)**	107 dB(A)	

\*Including countries that adopt the EU and UK Directives

\*\*EU Noise Directive 2000/14/EC and UK Noise Regulation 2001 No. 1701

TRANSMISSION					
Forward 1	7.3 km/h	4.5 mph	Reverse 1	7.3 km/h	4.5 mph
Forward 2	12.8 km/h	8.0 mph	Reverse 2	12.8 km/h	8.0 mph
Forward 3	22.8 km/h	14.2 mph	Reverse 3	22.8 km/h	14.2 mph
Forward 4	36.0 km/h	22.4 mph			

- Maximum travel speeds (23.5-25 tires).
- Maximum travel speed in standard vehicle with empty bucket and standard L3 tires with 760 mm (30 in) roll radius.

OPERATING SPECIFICATIONS			
Static Tipping Load – Full 38° Turn – with Tire Deflection	11 160 kg	24,604 lb	
Static Tipping Load – Full 38° Turn – No Tire Deflection	11 906 kg	26,248 lb	
Breakout Force	154 kN	34,645 lbf	

- For a machine configuration as defined under “Weight.”
- Full compliance to ISO 14397-1:2007 Sections 1 through 6, which requires 2% verification between calculations and testing.

SERVICE REFILL CAPACITIES		
Fuel Tank	290 L	76.6 gal
DEF Tank	16 L	4.2 gal
Cooling System	50 L	13.2 gal
Crankcase	18 L	4.8 gal
Transmission	45 L	11.9 gal
Differentials and Final Drives – Front	40 L	10.6 gal
Differentials and Final Drives – Rear	38 L	10.0 gal
Hydraulic Tank	112 L	29.6 gal

HYDRAULIC SYSTEM			
Implement System Pump Type	Piston		
Steering System Pump Type	Piston		
Implement System – Maximum Pump Output at 2,390 rpm	256 L/min	68 gal/min	
Implement System – Maximum Operating Pressure at 50 ± 1.5 L/min	27 900 kPa	4,047 psi	
Implement System – Optional 3rd Function Maximum Pressure at 70 L/min (18.5 gal/min)	20 680 kPa	2,999 psi	
Implement System – Optional 3rd Function Maximum Flow	240 L/min	63 gal/min	
Hydraulic Cycle Time – Raise from Carry Position	5.4 Seconds		
Hydraulic Cycle Time – Dump at Maximum Raise	1.2 Seconds		
Hydraulic Cycle Time – Lower, Empty, Float Down	2.8 Seconds		
Hydraulic Cycle Time – Total Cycle Time	9.4 Seconds		

AIR CONDITIONING SYSTEM	
The air conditioning system on this machine contains the fluorinated greenhouse gas refrigerant R134a (Global Warming Potential = 1430). The system contains 1.9 kg (4.2 lb) of refrigerant which has a CO <sub>2</sub> equivalent 2.717 metric tonnes (2.995 tons).	

For additional information, refer to the Technical Specifications brochure for the 950 GC model available at [www.cat.com](http://www.cat.com) or your Cat dealer.

# STANDARD & OPTIONAL EQUIPMENT

Standard and optional equipment may vary. Consult your Cat dealer for details.

OPERATOR ENVIRONMENT	STANDARD	OPTIONAL
Cab, pressurized and sound suppressed	•	
CB radio ready		•
Doors, service access (locking)	•	
Steering column, adjustable angle	•	
Steering, secondary, electrical*		•
Seat, Cat Comfort (cloth), mechanical suspension	•	
Seat, high-back, air suspended		•
Seat, air suspended, heated		•
Radio: DAB+/AM/FM/BT		•
ROPS/FOPS cab structure	•	
Mirrors, rear view external	•	
Air conditioning (HVAC) with 10 vents and filter unit located outside of cab	•	
Windows, sliding (left and right sides)	•	
POWERTRAIN	STANDARD	OPTIONAL
Cat C7.1 engine, meets emission standards	•	
Axles, oil cooler		•
Engine Idle Management System (EIMS)	•	
Filter, fuel primary-water separator/secondary	•	
Radiator, unit core (9.5 fpi) with ATAAC	•	
Fan, radiator, electronically controlled, hydraulically driven, temperature sensing, on demand	•	
Fan, reversing cooling, automatic and manual control		•
Guard		•
Switch, transmission neutralizer (adjustable) lockout	•	
Torque converter	•	
Brakes, full hydraulic enclosed wet-disc	•	
Transmission, automatic, power shift (4F/3R), kick-down 2-1 manual	•	
HYDRAULICS	STANDARD	OPTIONAL
Load sensing implement system	•	
Dedicated load sensing steering pump	•	
Ride control		•
3 <sup>rd</sup> function with additional dedicated single axis lever		•
Hoses, Cat XT™	•	
S•O•S <sup>SM</sup> oil sampling valves	•	

ELECTRICAL	STANDARD	OPTIONAL
Starter, electric, heavy duty	•	
Starting and charging system, 24V	•	
Lighting system: 4 halogen work lights, 2 halogen roading lights	•	
LED taillights	•	
Lights: 4 LED or 8 halogen work lights		•
MONITORING SYSTEM	STANDARD	OPTIONAL
Digital indicators: Gear indicator Speedometer Service meter units Fault codes	•	
Gauges: Engine coolant temperatures/fluid level Hydraulic/transmission oil temperature Tachometer/DEF level	•	
ADDITIONAL EQUIPMENT	STANDARD	OPTIONAL
Cat Autolube		•
Camera, front view (kit)**		•
Fenders, roading		•
Cat Payload scale system		•
Cat Payload installation		•
Storage/toolbox		•
Tilt cylinder guard		•
Variable backup alarm (3dB above ambient noise)	•	
Windshield guard		•
Product Link ready	•	
L5 traction tires		•
L3 bias or radial tires	•	
Precleaner, turbine		•
LINKAGE	STANDARD	OPTIONAL
Lift and bucket return-to-dig kickouts (electro-magnetic), mechanical adjustment	•	
Quick coupler control		•
Z-bar, fabricated crosstube/tilt lever	•	

\*Standard where mandated.

\*\* Refer to M0106413 publication for usage requirements.

For additional information, refer to the Technical Specifications brochure for the 950 GC model available at [www.cat.com](http://www.cat.com) or your Cat dealer.





オフロード法2014年  
基準適合

For more complete information on Cat products, dealer services and industry solutions, visit us on the web at [www.cat.com](http://www.cat.com).

Materials and specifications are subject to change without notice. Featured machines in photos may include additional equipment. See your Cat dealer for available options.

© 2024 Caterpillar. All Rights Reserved. CAT, CATERPILLAR, LET'S DO THE WORK, their respective logos, Fusion, XT, S•O•S, Product Link, "Caterpillar Corporate Yellow", the "Power Edge" and Cat "Modern Hex" trade dress as well as corporate and product identity used herein, are trademarks of Caterpillar and may not be used without permission.

[www.cat.com](http://www.cat.com) [www.caterpillar.com](http://www.caterpillar.com)

AEXQ2505-04 (07-2024)  
Build Number: 01B  
(N Am, Europe, Japan,  
S Korea, Turkey, Chile,  
Colombia)

