



972M XE

Wheel Loader

Technical Specifications

Not all attachments available in all regions. Consult your Cat® dealer for specific configurations available in your region.

Table of Contents

| | |
|---|-----------|
| Specifications | 2 |
| Engine..... | 2 |
| Buckets..... | 2 |
| Weight..... | 2 |
| Operating Specifications..... | 2 |
| Brakes..... | 2 |
| Transmission Virtual Gears..... | 2 |
| Hydraulic System..... | 2 |
| Axles..... | 3 |
| Cab..... | 3 |
| Sound..... | 3 |
| Service Refill Capacities..... | 3 |
| Dimensions..... | 4 |
| Dimension Changes – Tires..... | 5 |
| Bucket Fill Factors and Selection Guide..... | 6 |
| Operating Specifications – Buckets..... | 7 |
| Light Material High Dump Buckets..... | 11 |
| Woodchip Buckets..... | 15 |
| Pallet and Construction Forks..... | 16 |
| Material Handling Arms..... | 20 |
| Standard and Optional Equipment..... | 23 |
| 972M XE Industrial & Waste Configuration | 26 |
| Key Features and Benefits..... | 26 |
| Engine..... | 27 |
| Brakes..... | 27 |
| Transmission Virtual Gears..... | 27 |
| Hydraulic System..... | 27 |
| Axles..... | 28 |
| Cab..... | 28 |
| Sound..... | 28 |
| Service Refill Capacities..... | 28 |
| Dimensions..... | 29 |
| Tire Options for Scrap and Waste..... | 30 |
| Operating Specifications – Waste Buckets..... | 31 |
| Waste High Dump Buckets..... | 32 |
| Waste High Dump Bucket Chart..... | 33 |
| Scrap Bucket Chart..... | 34 |
| Standard and Optional Equipment..... | 35 |
| Machine Guarding and Features..... | 38 |

972M XE Wheel Loader Specifications

Engine

| | | |
|--------------------------------|----------|---------------------|
| Engine Model | Cat C9.3 | |
| Maximum Net Power (1,600 rpm) | | |
| SAE J1349 | 232 kW | 311 hp |
| ISO 9249 | 232 kW | 311 hp |
| Peak Gross Torque (1,200 rpm) | | |
| SAE J1995 | 1728 N·m | 1,275 lbf-ft |
| ISO 14396 | 1708 N·m | 1,260 lbf-ft |
| Maximum Net Torque (1,200 rpm) | 1618 N·m | 1,193 lbf-ft |
| Displacement | 9.3 L | 568 in ³ |

- Cat engine with ACERT™ Technology – meets U.S. EPA Tier 4 Final/EU Stage V emission standards.
- The power ratings apply at the stated speed when tested under the reference conditions for the specified standards.
- The net power advertised is the power available at the flywheel when the engine is equipped with fan running up to maximum speed, alternator, air cleaner, and aftertreatment.

Buckets

| | | |
|-------------------|------------------------------|--------------------------------|
| Bucket Capacities | 3.20- 9.94 m ³ | 4.19- 13.00 yd ³ |
|-------------------|------------------------------|--------------------------------|

Weight

| | | |
|------------------|-----------|-----------|
| Operating Weight | 24 897 kg | 54,871 lb |
|------------------|-----------|-----------|

- Weight based on a machine configuration with Michelin 26.5R25 XHA2 L3 radial tires, full fluids, operator, standard counterweight, cold start, roading fenders, Product Link™, manual diff lock/open axles (front/rear), power train guard, secondary steering, sound suppression and a 4.8 m³ general purpose bucket with BOCE.

Operating Specifications

| | | |
|-------------------------------------|-----------|------------|
| Static Tipping Load – Full 37° Turn | | |
| With Tire Deflection | 16 164 kg | 35,626 lb |
| No Tire Deflection | 17 421 kg | 38,396 lb |
| Breakout Force | 196 kN | 44,075 lbf |

- For a machine configuration as defined under “Weight.”
- Full compliance to ISO 14397-1:2007 Sections 1 thru 6, which requires 2% verification between calculations and testing.

Brakes

| | |
|--------|--|
| Brakes | Brakes meet ISO 3450:2011 standards |
|--------|--|

Transmission Virtual Gears

| | | |
|-----------|-----------|----------|
| Forward 1 | 6.7 km/h | 4.2 mph |
| Forward 2 | 12.6 km/h | 7.8 mph |
| Forward 3 | 22.1 km/h | 13.7 mph |
| Forward 4 | 39.5 km/h | 24.5 mph |
| Reverse 1 | 6.7 km/h | 4.2 mph |
| Reverse 2 | 12.6 km/h | 7.8 mph |
| Reverse 3 | 28.0 km/h | 17.4 mph |

- Maximum travel speed in standard vehicle with empty bucket and standard L3 tires with 826 mm roll radius.

Hydraulic System

| | | |
|--|---------------------------------|-------------|
| Implement Pump Type | Variable Displacement Piston | |
| Implement System | | |
| Maximum Pump Output (1,600 rpm*) | 385 L/min | 102 gal/min |
| Maximum Operating Pressure | 31 000 kPa | 4,496 psi |
| Maximum Flow – Optional 3 rd /4 th Function | 240 L/min | 63 gal/min |
| Maximum Pressure – Optional 3 rd /4 th Function | 21 780 kPa | 3,159 psi |
| Hydraulic Cycle Time with Rated Payload | | |
| Raise from Carry Position | 6.1 Sec. | |
| Dump, at Maximum Raise | 1.5 Sec. | |
| Lower, Empty, Float Down | 3.1 Sec. | |
| Total | 10.7 Sec. | |

*Engine speed.

972M XE Wheel Loader Specifications

Axles

| | |
|------------------------------------|------------------------------|
| Front | Fixed |
| Rear | Oscillating ± 13 degrees |
| Maximum Single-Wheel Rise and Fall | 502 mm 19.5 in |

Cab

| | |
|-----------|--|
| ROPS/FOPS | ROPS/FOPS meet ISO 3471:2008 and ISO 3449:2005 Level II standards |
|-----------|--|

Sound

The sound values indicated below are for specific operating conditions only. Machine and operator sound levels will vary at different engine and/or cooling fan speeds. Hearing protection may be needed when the machine is operated with a cabin that is not properly maintained, or when the doors and/or windows are open for extended periods or in a noisy environment.

With Cooling Fan Speed at Maximum Value:

| | |
|---|-----------|
| Operator sound pressure level (ISO 6396:2008) | 67 dB(A) |
| Exterior sound power level (ISO 6395:2008) | 107 dB(A) |
| Exterior sound pressure level (SAE J88:2013) | 76 dB(A)* |

*Distance of 15 m (49.2 ft), moving forward in second gear ratio.

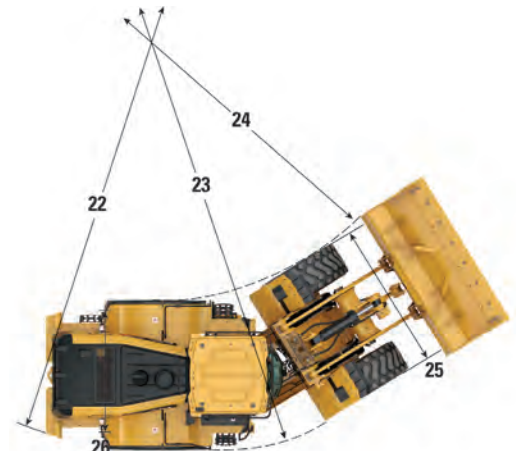
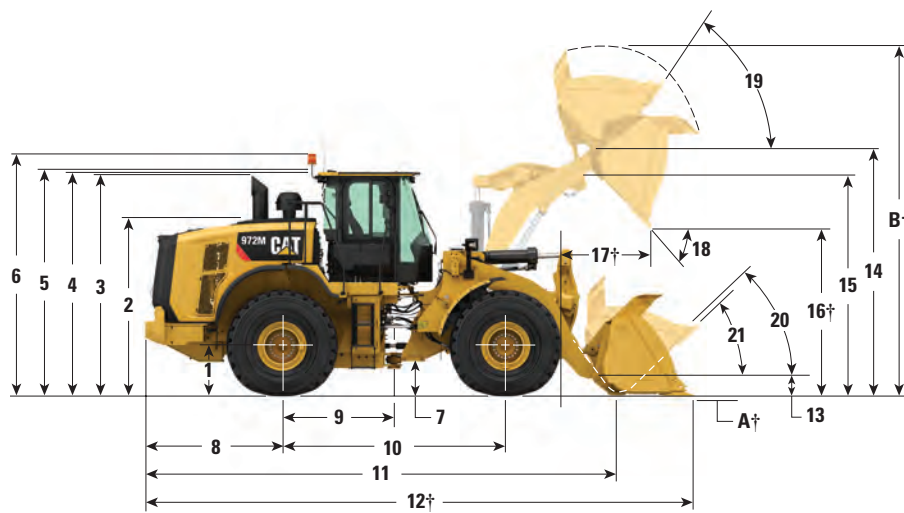
Service Refill Capacities

| | | |
|--|---------|----------|
| Fuel Tank | 302.0 L | 79.8 gal |
| DEF Tank | 16.8 L | 4.4 gal |
| Cooling System | 71.6 L | 19.0 gal |
| Crankcase | 24.5 L | 6.5 gal |
| Transmission | 63.0 L | 16.6 gal |
| Differentials and Final Drives – Front | 57.0 L | 15.1 gal |
| Differentials and Final Drives – Rear | 57.0 L | 15.1 gal |
| Hydraulic Tank | 125.0 L | 33.0 gal |

972M XE Wheel Loader Specifications

Dimensions

All dimensions are approximate.



| | Standard Lift | | High Lift | | Extended Capacity | |
|---|---------------|--------|------------|--------|-------------------|--------|
| 1 Height to Axle Centerline | 799 mm | 2'7" | 2818 mm | 9'3" | 799 mm | 2'7" |
| 2 Height to Top of Hood | 2818 mm | 9'3" | 2818 mm | 9'3" | 2818 mm | 9'3" |
| 3 Height to Top of Exhaust Pipe | 3522 mm | 11'7" | 3522 mm | 11'7" | 3522 mm | 11'7" |
| 4 Height to Top of ROPS | 3587 mm | 11'9" | 3587 mm | 11'9" | 3587 mm | 11'9" |
| 5 Height to Top of Product Link Antenna | 3636 mm | 11'11" | 3636 mm | 11'11" | 3636 mm | 11'11" |
| 6 Height to Top of Warning Beacon | 3859 mm | 12'8" | 3859 mm | 12'8" | 3859 mm | 12'8" |
| 7 Ground Clearance | 434 mm | 1'5" | 434 mm | 1'5" | 434 mm | 1'5" |
| 8 Center Line of Rear Axle to Edge of Counterweight | 2500 mm | 8'2" | 2500 mm | 8'2" | 2500 mm | 8'2" |
| 9 Center Line of Rear Axle to Hitch | 1775 mm | 5'10" | 1775 mm | 5'10" | 1775 mm | 5'10" |
| 10 Wheelbase | 3550 mm | 11'8" | 3550 mm | 11'8" | 3550 mm | 11'8" |
| 11 Overall Length (without bucket) | 7774 mm | 25'7" | 8109 mm | 26'8" | 7609 mm | 25'0" |
| 12 Shipping Length (with bucket level on ground)*† | 9315 mm | 30'7" | 9650 mm | 31'8" | 9164 mm | 30'1" |
| 13 Hinge Pin Height at Carry Height | 680 mm | 2'3" | 778 mm | 2'7" | 631 mm | 2'1" |
| 14 Hinge Pin Height at Maximum Lift | 4458 mm | 14'8" | 4793 mm | 15'9" | 4235 mm | 13'11" |
| 15 Lift Arm Clearance at Maximum Lift | 3843 mm | 12'7" | 4140 mm | 13'6" | 3643 mm | 11'11" |
| 16 Dump Clearance at Maximum Lift and 45° Discharge*† | 3154 mm | 10'4" | 3490 mm | 11'5" | 2920 mm | 9'6" |
| 17 Reach at Maximum Lift and 45° Discharge*† | 1357 mm | 4'5" | 1380 mm | 4'6" | 1413 mm | 4'7" |
| 18 Dump Angle at Maximum Lift and Dump (on stops)* | 48 degrees | | 48 degrees | | 48 degrees | |
| 19 Rack Back at Maximum Lift* | 56 degrees | | 71 degrees | | 62 degrees | |
| 20 Rack Back at Carry Height* | 50 degrees | | 49 degrees | | 50 degrees | |
| 21 Rack Back at Ground* | 41 degrees | | 39 degrees | | 42 degrees | |
| 22 Turning Radius to Counterweight | 6804 mm | 22'4" | 6804 mm | 22'4" | 6804 mm | 22'4" |
| 23 Turning Radius to Outside of Tires | 6761 mm | 22'3" | 6761 mm | 22'3" | 6761 mm | 22'3" |
| 24 Turning Radius to Inside of Tires | 3770 mm | 12'4" | 3770 mm | 12'4" | 3770 mm | 12'4" |
| 25 Width over Tires (unloaded) | 2991 mm | 9'10" | 2991 mm | 9'10" | 2991 mm | 9'10" |
| 26 Tread Width | 2230 mm | 7'4" | 2230 mm | 7'4" | 2230 mm | 7'4" |

*Standard and High Lift are with 4.8 m³ (6.3 yd³) general purpose pin on bucket with BOCE (see Operating Specifications for other buckets). Extended Capacity is with a 4.9 m³ (6.4 yd³) general purpose pin on bucket with BOCE (see Operating Specifications for other buckets).

†Dimensions are listed in Operating Specification charts.

All height and tire related dimensions are with Michelin 26.5R25 XHA2 L3 tires (see Tire Option Chart for other tires).

972M XE Wheel Loader Specifications

Dimension Changes – Tires

| Tire Brand | Michelin | Michelin | Michelin | Bridgestone | Bridgestone | Bridgestone |
|--|------------------|--------------------|---------------------|------------------|---------------------|--------------------|
| Tire Size | 26.5R25 | 26.5R25 | 26.5R25 | 26.5R25 | 26.5R25 | 775/65R29 |
| Tread Type | L-4 | L-5 | L-5 | L-3 | L-5 | L-3 |
| Tread Pattern | XLDD1 | XLDD2 | XMINED2 | VJT | VSDL | VTS |
| Width over Tires – Maximum (empty)* | 2987 mm 9'10" | 2986 mm 9'10" | 2970 mm 9'9" | 2982 mm 9'9" | 2874 mm 9'5" | 3080 mm 10'1" |
| Width over Tires – Maximum (loaded)* | 3019 mm 9'11" | 3015 mm 9'11" | 2998 mm 9'10" | 3016 mm 9'11" | 2900 mm 9'6" | 3101 mm 10'2" |
| Change in Vertical Dimensions (average of front and rear) | 44 mm 1.7" | 39 mm 1.5" | 53 mm 2.1" | 15 mm 0.6" | 50 mm 2" | 17 mm 0.7" |
| Change in Horizontal Reach | -36 mm -1.4" | -34 mm -1.3" | -32 mm -1.3" | -3 mm -0.1" | -29 mm -1.1" | -5 mm -0.2" |
| Change in Clearance Circle (radius) to Outside of Tires | 5 mm 0.2" | 1 mm 0" | -7 mm -0.3" | 3 mm 0.1" | -8 mm -0.3" | -54 mm -2.1" |
| Change in Clearance Circle (radius) to Inside of Tires | -5 mm -0.2" | -1 mm 0" | 7 mm 0.3" | -3 mm -0.1" | 8 mm 0.3" | 54 mm 2.1" |
| Change in Operating Weight (without Ballast) | 420 kg 926 lb | 716 kg 1,578 lb | 1068 kg 2,354 lb | 164 kg 361 lb | 1136 kg 2,504 lb | 856 kg 1,886 lb |
| Change in Static Tipping Load – Straight | 283 kg 623 lb | 482 kg 1,062 lb | 719 kg 1,584 lb | 110 kg 243 lb | 764 kg 1,685 lb | 576 kg 1,269 lb |
| Change in Static Tipping Load – Articulated | 252 kg 555 lb | 429 kg 946 lb | 640 kg 1,411 lb | 98 kg 216 lb | 680 kg 1,499 lb | 513 kg 1,131 lb |

*Width over bulge and includes tire growth.

972M XE Wheel Loader Specifications

Bucket Fill Factors and Selection Guide

The bucket size must be chosen based on the density of the material and on the expected fill factor. The Cat Performance Series Buckets with longer floor, larger bucket opening, increased repository angle, rounded side boards and integrated spill guard, demonstrate fill factors significantly higher than previous generation or non Cat buckets. The actual volume handled by the machine is thus often larger than the rated capacity.

| Loose Material | | Material Density | Fill Factor (%)* |
|-----------------|-----------------------------|---|------------------|
| Earth/Clay | | 1500-1700 kg/m ³ (2,528-2,865 lb/yd ³) | 115 |
| Sand and Gravel | | 1500-1700 kg/m ³ (2,528-2,865 lb/yd ³) | 115 |
| Aggregate: | 25-76 mm (1 to 3 in) | 1600-1700 kg/m ³ (2,696-2,865 lb/yd ³) | 110 |
| | 19 mm (0.75 in) and smaller | 1800 kg/m ³ (3,033 lb/yd ³) | 105 |
| Rock: | 76 mm (3 in) and larger | 1600 kg/m ³ (2,696 lb/yd ³) | 100 |

*As a % of ISO rated capacity.

Note: Fill Factors achieved will also depend on whether the product is washed or not washed.

| Material Density | | kg/m ³ | 700 | 800 | 900 | 1000 | 1100 | 1200 | 1300 | 1400 | 1500 | 1600 | 1700 | 1800 | 1900 | 2000 | 2100 | 2200 | 2300 | 2400 | 2500 | |
|---------------------------|-----------|-----------------------------|--|-------|-------|-------|-------|-------|-------|-------|-------|-------|-------|-------|-------|-------|-------|-------|-------|-------|-------|--|
| Standard Linkage | Pin On | General Purpose | 4.6 m ³ (6.00 yd ³) | | | | | | | | | | | | | | | | | | | |
| | | | 4.8 m ³ (6.25 yd ³) | | | | | | | | | | | | | | | | | | | |
| | | | 5.0 m ³ (6.50 yd ³) | | | | | | | | | | | | | | | | | | | |
| Standard Linkage | Fusion QC | General Purpose | 4.4 m ³ (5.75 yd ³) | | | | | | | | | | | | | | | | | | | |
| | | | 5.1 m ³ (6.62 yd ³) | | | | | | | | | | | | | | | | | | | |
| | | | 4.4 m ³ (5.75 yd ³) | | | | | | | | | | | | | | | | | | | |
| Standard Linkage | Pin On | Flat Floor | 4.6 m ³ (6.00 yd ³) | | | | | | | | | | | | | | | | | | | |
| | | | 5.3 m ³ (6.92 yd ³) | | | | | | | | | | | | | | | | | | | |
| | | | 4.6 m ³ (6.00 yd ³) | | | | | | | | | | | | | | | | | | | |
| High Lift Linkage | Pin On | General Purpose | 4.6 m ³ (6.00 yd ³) | | | | | | | | | | | | | | | | | | | |
| | | | 4.8 m ³ (6.25 yd ³) | | | | | | | | | | | | | | | | | | | |
| | | | 5.0 m ³ (6.50 yd ³) | | | | | | | | | | | | | | | | | | | |
| High Lift Linkage | Fusion QC | General Purpose | 4.4 m ³ (5.75 yd ³) | | | | | | | | | | | | | | | | | | | |
| | | | 5.1 m ³ (6.62 yd ³) | | | | | | | | | | | | | | | | | | | |
| | | | 4.4 m ³ (5.75 yd ³) | | | | | | | | | | | | | | | | | | | |
| High Lift Linkage | Pin On | Flat Floor | 4.6 m ³ (6.00 yd ³) | | | | | | | | | | | | | | | | | | | |
| | | | 5.3 m ³ (6.92 yd ³) | | | | | | | | | | | | | | | | | | | |
| | | | 4.6 m ³ (6.00 yd ³) | | | | | | | | | | | | | | | | | | | |
| Extended Linkage | Fusion QC | General Purpose | 4.9 m ³ (6.41 yd ³) | | | | | | | | | | | | | | | | | | | |
| | | | 5.6 m ³ (7.38 yd ³) | | | | | | | | | | | | | | | | | | | |
| Aggregate Handler Package | Pin On | General Purpose | 5.1 m ³ (6.67 yd ³) | | | | | | | | | | | | | | | | | | | |
| | | | 5.3 m ³ (6.93 yd ³) | | | | | | | | | | | | | | | | | | | |
| | | | 5.5 m ³ (7.19 yd ³) | | | | | | | | | | | | | | | | | | | |
| Material Density | | lb/yd ³ | 1,180 | 1,348 | 1,517 | 1,685 | 1,854 | 2,022 | 2,191 | 2,359 | 2,528 | 2,696 | 2,865 | 3,033 | 3,202 | 3,370 | 3,539 | 3,707 | 3,876 | 4,044 | 4,213 | |
| Bucket Fill Factors | | 115% 110% 105% 100% 95% | | | | | | | | | | | | | | | | | | | | |

Note: All buckets are showing Bolt-On Edges.

QC = Quick Coupler

972M XE Wheel Loader Specifications

Operating Specifications – Buckets

| Linkage | | Standard Linkage | | | Standard Linkage | | | |
|--|-----------------|--------------------------|--------------------|--------|-----------------------|--------------------|--------|----------------------------|
| Bucket Type | | General Purpose – Pin On | | | | | | |
| Edge Type | | Bolt-On Cutting Edges | Teeth and Segments | Tips | Bolt-On Cutting Edges | Teeth and Segments | Tips | High Lift Linkage Change** |
| Capacity – Rated | m ³ | 4.60 | 4.60 | 4.40 | 4.80 | 4.80 | 4.60 | — |
| | yd ³ | 6.00 | 6.00 | 5.75 | 6.25 | 6.25 | 6.00 | — |
| Capacity – Rated at 110% Fill Factor | m ³ | 5.06 | 5.06 | 4.84 | 5.28 | 5.28 | 5.06 | — |
| | yd ³ | 6.62 | 6.62 | 6.33 | 6.91 | 6.91 | 6.62 | — |
| Width | mm | 3220 | 3271 | 3271 | 3220 | 3271 | 3271 | — |
| | ft/in | 10'6" | 10'8" | 10'8" | 10'6" | 10'8" | 10'8" | — |
| 16† Dump Clearance at Maximum Lift and 45° Discharge | mm | 3187 | 3033 | 3033 | 3154 | 2999 | 2999 | 336 |
| | ft/in | 10'5" | 9'11" | 9'11" | 10'4" | 9'10" | 9'10" | 1'1" |
| 17† Reach at Maximum Lift and 45° Discharge | mm | 1328 | 1465 | 1465 | 1357 | 1493 | 1493 | 23 |
| | ft/in | 4'4" | 4'9" | 4'9" | 4'5" | 4'10" | 4'10" | 0.9" |
| Reach at Level Lift Arm and Bucket Level | mm | 2969 | 3174 | 3174 | 3014 | 3219 | 3219 | 274 |
| | ft/in | 9'8" | 10'4" | 10'4" | 9'10" | 10'6" | 10'6" | 11" |
| A† Digging Depth | mm | 103 | 103 | 73 | 103 | 103 | 73 | -5 |
| | in | 4.0" | 4.0" | 2.8" | 4.0" | 4.0" | 2.8" | -0.2" |
| 12† Shipping Length (with Bucket) | mm | 9270 | 9494 | 9494 | 9315 | 9539 | 9539 | 335 |
| | ft/in | 30'5" | 31'2" | 31'2" | 30'7" | 31'4" | 31'4" | 1'1" |
| B† Overall Height with Bucket at Maximum Lift | mm | 6195 | 6195 | 6195 | 6031 | 6031 | 6031 | 336 |
| | ft/in | 20'4" | 20'4" | 20'4" | 19'10" | 19'10" | 19'10" | 1'1" |
| Loader Clearance Circle Radius with Bucket at Carry Position | mm | 7596 | 7685 | 7685 | 7608 | 7697 | 7697 | 162 |
| | ft/in | 25'0" | 25'2" | 25'2" | 25'0" | 25'2" | 25'2" | 6'0" |
| Static Tipping Load, Straight (With Tire Deflection)* | kg | 18 477 | 18 293 | 18 550 | 18 502 | 18 318 | 20 545 | -1592 |
| | lb | 40,723 | 40,319 | 40,884 | 40,779 | 40,372 | 45,281 | -3,508 |
| Static Tipping Load, Straight (No Tire Deflection)* | kg | 19 724 | 19 537 | 19 796 | 19 755 | 19 567 | 22 192 | -1752 |
| | lb | 43,473 | 43,061 | 43,631 | 43,542 | 43,127 | 48,912 | -3,863 |
| Static Tipping Load, Articulated (With Tire Deflection)* | kg | 16 135 | 15 950 | 16 188 | 16 164 | 15 978 | 17 927 | -1423 |
| | lb | 35,563 | 35,155 | 35,680 | 35,626 | 35,215 | 39,512 | -3,137 |
| Static Tipping Load, Articulated (No Tire Deflection)* | kg | 17 387 | 17 200 | 17 439 | 17 421 | 17 233 | 19 558 | -1598 |
| | lb | 38,322 | 37,910 | 38,437 | 38,396 | 37,982 | 43,107 | -3,521 |
| Breakout Force | kN | 202 | 201 | 214 | 196 | 194 | 207 | -6 |
| | lbf | 45,482 | 45,173 | 48,227 | 44,075 | 43,766 | 46,655 | -1,368 |
| Operating Weight* | kg | 24 969 | 25 106 | 24 943 | 24 897 | 25 034 | 24 871 | 84 |
| | lb | 55,030 | 55,334 | 54,974 | 54,871 | 55,175 | 54,816 | 186 |

*Static tipping loads and operating weights shown are based on a machine configuration with Michelin 26.5R25 XHA2 L3 radial tires, full fluids, operator, standard counterweight, cold start, roading fenders, Product Link, manual diff lock/open axles (front/rear), power train guard, secondary steering and sound suppression.

**Maximum values.

(With Tire Deflection) Full compliance to ISO 14397-1:2007 Sections 1 thru 6, which requires 2% verification between calculations and testing.

(No Tire Deflection) Compliance to ISO 14397-1:2007 Sections 1 thru 5.

†Illustration shown with Dimension charts.

972M XE Wheel Loader Specifications

Operating Specifications – Buckets

| Linkage | Standard Linkage | | | | Standard Linkage | | | High Lift Linkage** |
|--|------------------|--------------------------|--------------------|--------|------------------------------|--------------------|--------|---------------------|
| | Bucket Type | General Purpose – Pin On | | | General Purpose – Fusion™ QC | | | |
| Edge Type | | Bolt-On Cutting Edges | Teeth and Segments | Tips | Bolt-On Cutting Edges | Teeth and Segments | Tips | |
| Capacity – Rated | m ³ | 5.00 | 5.00 | 4.80 | 4.40 | 4.40 | 4.20 | — |
| | yd ³ | 6.50 | 6.50 | 6.25 | 5.75 | 5.75 | 5.50 | — |
| Capacity – Rated at 110% Fill Factor | m ³ | 5.50 | 5.50 | 5.28 | 4.84 | 4.84 | 4.62 | — |
| | yd ³ | 7.19 | 7.19 | 6.91 | 6.33 | 6.33 | 6.04 | — |
| Width | mm | 3220 | 3271 | 3271 | 3220 | 3271 | 3271 | — |
| | ft/in | 10'6" | 10'8" | 10'8" | 10'6" | 10'8" | 10'8" | — |
| 16† Dump Clearance at Maximum Lift and 45° Discharge | mm | 3137 | 2982 | 2982 | 3200 | 3047 | 3047 | 336 |
| | ft/in | 10'3" | 9'9" | 9'9" | 10'6" | 9'11" | 9'11" | 1'1" |
| 17† Reach at Maximum Lift and 45° Discharge | mm | 1372 | 1508 | 1508 | 1327 | 1465 | 1465 | 23 |
| | ft/in | 4'6" | 4'11" | 4'11" | 4'4" | 4'9" | 4'9" | 0.9" |
| Reach at Level Lift Arm and Bucket Level | mm | 3037 | 3242 | 3242 | 2958 | 3163 | 3163 | 274 |
| | ft/in | 9'11" | 10'7" | 10'7" | 9'8" | 10'4" | 10'4" | 11" |
| A† Digging Depth | mm | 103 | 103 | 73 | 103 | 103 | 73 | -5 |
| | in | 4.0" | 4.0" | 2.8" | 4.0" | 4.0" | 2.8" | -0.2" |
| 12† Shipping Length (with Bucket) | mm | 9338 | 9562 | 9562 | 9259 | 9483 | 9483 | 335 |
| | ft/in | 30'8" | 31'5" | 31'5" | 30'5" | 31'2" | 31'2" | 1'1" |
| B† Overall Height with Bucket at Maximum Lift | mm | 6284 | 6284 | 6284 | 6205 | 6205 | 6205 | 336 |
| | ft/in | 20'8" | 20'8" | 20'8" | 20'5" | 20'5" | 20'5" | 1'1" |
| Loader Clearance Circle Radius with Bucket at Carry Position | mm | 7615 | 7704 | 7704 | 7590 | 7680 | 7680 | 162 |
| | ft/in | 25'0" | 25'2" | 25'2" | 25'0" | 25'0" | 25'2" | 6'0" |
| Static Tipping Load, Straight (With Tire Deflection)* | kg | 18 600 | 18 415 | 18 651 | 18 081 | 17 899 | 18 257 | -1608 |
| | lb | 40,996 | 40,588 | 41,108 | 39,851 | 39,450 | 40,240 | -3,545 |
| Static Tipping Load, Straight (No Tire Deflection)* | kg | 19 856 | 19 668 | 19 906 | 19 317 | 19 131 | 19 507 | -1771 |
| | lb | 43,764 | 43,348 | 43,873 | 42,576 | 42,166 | 42,993 | -3,903 |
| Static Tipping Load, Articulated (With Tire Deflection)* | kg | 16 264 | 16 076 | 16 297 | 15 749 | 15 565 | 15 907 | -1444 |
| | lb | 35,845 | 35,433 | 35,919 | 34,712 | 34,307 | 35,060 | -3,181 |
| Static Tipping Load, Articulated (No Tire Deflection)* | kg | 17 521 | 17 332 | 17 553 | 16 992 | 16 807 | 17 163 | -1620 |
| | lb | 38,617 | 38,200 | 38,687 | 37,452 | 37,043 | 37,828 | -3,570 |
| Breakout Force | kN | 198 | 197 | 210 | 203 | 202 | 216 | -6 |
| | lbf | 44,634 | 44,325 | 47,205 | 45,788 | 45,479 | 48,572 | -1,378 |
| Operating Weight* | kg | 25 010 | 25 147 | 24 984 | 25 327 | 25 464 | 25 301 | 84 |
| | lb | 55,120 | 55,424 | 55,065 | 55,819 | 56,123 | 55,763 | 186 |

*Static tipping loads and operating weights shown are based on a machine configuration with Michelin 26.5R25 XHA2 L3 radial tires, full fluids, operator, standard counterweight, cold start, roading fenders, Product Link, manual diff lock/open axles (front/rear), power train guard, secondary steering and sound suppression.

**Maximum values.

(With Tire Deflection) Full compliance to ISO 14397-1:2007 Sections 1 thru 6, which requires 2% verification between calculations and testing.

(No Tire Deflection) Compliance to ISO 14397-1:2007 Sections 1 thru 5.

†Illustration shown with Dimension charts.

QC = Quick Coupler

972M XE Wheel Loader Specifications

Operating Specifications – Buckets

| Linkage | Standard Linkage | | | | Extended Linkage | | | High Lift Linkage Change** |
|--|------------------|----------------------------|-----------------------|--------------------|-----------------------------|-----------------------|--------------------|----------------------------|
| | Bucket Type | Material Handling – Pin On | | | General Purpose – Fusion QC | | | |
| Edge Type | | | Bolt-On Cutting Edges | Teeth and Segments | Tips | Bolt-On Cutting Edges | Teeth and Segments | Tips |
| Capacity – Rated | m ³ | 4.60 | 4.60 | 4.40 | 4.90 | 4.90 | 4.70 | — |
| | yd ³ | 6.00 | 6.00 | 5.75 | 6.41 | 6.41 | 6.15 | — |
| Capacity – Rated at 110% Fill Factor | m ³ | 5.06 | 5.06 | 4.84 | 5.39 | 5.39 | 5.17 | — |
| | yd ³ | 6.62 | 6.62 | 6.33 | 7.05 | 7.05 | 6.76 | — |
| Width | mm | 3220 | 3271 | 3271 | 3220 | 3271 | 3271 | — |
| | ft/in | 10'6" | 10'8" | 10'8" | 10'6" | 10'8" | 10'8" | — |
| 16† Dump Clearance at Maximum Lift and 45° Discharge | mm | 3120 | 2957 | 2957 | 2899 | 2744 | 2744 | 336 |
| | ft/in | 10'2" | 9'8" | 9'8" | 9'6" | 9'0" | 9'0" | 1'1" |
| 17† Reach at Maximum Lift and 45° Discharge | mm | 1251 | 1378 | 1378 | 1449 | 1586 | 1586 | 23 |
| | ft/in | 4'1" | 4'6" | 4'6" | 4'9" | 5'2" | 5'2" | 0.9" |
| Reach at Level Lift Arm and Bucket Level | mm | 2979 | 3184 | 3184 | 2940 | 3145 | 3145 | 274 |
| | ft/in | 9'9" | 10'5" | 10'5" | 9'7" | 10'3" | 10'3" | 11" |
| A† Digging Depth | mm | 103 | 103 | 73 | 115 | 115 | 85 | -5 |
| | in | 4.0" | 4.0" | 2.8" | 4.5" | 4.5" | 3.3" | -0.2" |
| 12† Shipping Length (with Bucket) | mm | 9280 | 9504 | 9504 | 9200 | 9425 | 9425 | 335 |
| | ft/in | 30'6" | 31'3" | 31'3" | 30'3" | 31'0" | 31'0" | 1'1" |
| B† Overall Height with Bucket at Maximum Lift | mm | 6162 | 6162 | 6162 | 6126 | 6126 | 6126 | 336 |
| | ft/in | 20'3" | 20'3" | 20'3" | 20'2" | 20'2" | 20'2" | 1'1" |
| Loader Clearance Circle Radius with Bucket at Carry Position | mm | 7599 | 7688 | 7688 | 751 | 7628 | 7628 | 167 |
| | ft/in | 25'0" | 25'2" | 25'2" | 2'6" | 25'0" | 25'0" | 6'0" |
| Static Tipping Load, Straight (With Tire Deflection)* | kg | 18 412 | 18 229 | 18 468 | 19 411 | 19 225 | 19 590 | -1598 |
| | lb | 40,580 | 40,177 | 40,704 | 42,781 | 42,372 | 43,177 | -3,521 |
| Static Tipping Load, Straight (No Tire Deflection)* | kg | 19 640 | 19 453 | 19 695 | 20 885 | 20 695 | 21 079 | -1757 |
| | lb | 43,286 | 42,875 | 43,409 | 46,032 | 45,612 | 46,460 | -3,871 |
| Static Tipping Load, Articulated (With Tire Deflection)* | kg | 16 081 | 15 896 | 16 119 | 16 920 | 16 732 | 17 082 | -1429 |
| | lb | 35,442 | 35,035 | 35,526 | 37,293 | 36,878 | 37,649 | -3,149 |
| Static Tipping Load, Articulated (No Tire Deflection)* | kg | 17 313 | 17 127 | 17 351 | 18 387 | 18 197 | 18 562 | -1601 |
| | lb | 38,159 | 37,749 | 38,242 | 40,526 | 40,106 | 40,912 | -3,528 |
| Breakout Force | kN | 201 | 199 | 213 | 198 | 196 | 209 | -7 |
| | lbf | 45,174 | 44,865 | 47,882 | 44,570 | 44,204 | 47,022 | -1,647 |
| Operating Weight* | kg | 24 964 | 25 101 | 24 938 | 25 283 | 25 421 | 25 258 | 85 |
| | lb | 55,019 | 55,323 | 54,963 | 55,724 | 56,028 | 55,668 | 186 |

*Static tipping loads and operating weights shown are based on a machine configuration with Michelin 26.5R25 XHA2 L3 radial tires, full fluids, operator, standard counterweight, cold start, roading fenders, Product Link, manual diff lock/open axles (front/rear), power train guard, secondary steering and sound suppression.

**Maximum values.

(With Tire Deflection) Full compliance to ISO 14397-1:2007 Sections 1 thru 6, which requires 2% verification between calculations and testing.

(No Tire Deflection) Compliance to ISO 14397-1:2007 Sections 1 thru 5.

†Illustration shown with Dimension charts.

QC = Quick Coupler

972M XE Wheel Loader Specifications

Operating Specifications – Buckets – Aggregate Handler

| Package | | Aggregate Handler | | |
|--|-----------------|--------------------------|-----------------------|-----------------------|
| Bucket Type | | General Purpose – Pin On | | |
| Edge Type | | Bolt-On Cutting Edges | Bolt-On Cutting Edges | Bolt-On Cutting Edges |
| Capacity – Rated | m ³ | 5.10 | 5.30 | 5.50 |
| | yd ³ | 6.67 | 6.93 | 7.19 |
| Capacity – Rated at 110% Fill Factor | m ³ | 5.61 | 5.83 | 6.05 |
| | yd ³ | 7.34 | 7.63 | 7.91 |
| Width | mm | 3357 | 3357 | 3357 |
| | ft/in | 11'0" | 11'0" | 11'0" |
| 16† Dump Clearance at Maximum Lift and 45° Discharge | mm | 3127 | 3100 | 3072 |
| | ft/in | 10'3" | 10'2" | 10'0" |
| 17† Reach at Maximum Lift and 45° Discharge | mm | 1375 | 1399 | 1424 |
| | ft/in | 4'6" | 4'7" | 4'8" |
| Reach at Level Lift Arm and Bucket Level | mm | 3046 | 3083 | 3121 |
| | ft/in | 9'11" | 10'1" | 10'2" |
| A† Digging Depth | mm | 108 | 108 | 108 |
| | in | 4.2" | 4.2" | 4.2" |
| 12† Shipping Length (with Bucket) | mm | 9037 | 9074 | 9112 |
| | ft/in | 29'8" | 29'10" | 29'11" |
| B† Overall Height with Bucket at Maximum Lift | mm | 6235 | 6272 | 6293 |
| | ft/in | 20'6" | 20'7" | 20'8" |
| Loader Clearance Circle Radius with Bucket at Carry Position | mm | 7681 | 7691 | 7702 |
| | ft/in | 25'2" | 25'2" | 25'4" |
| Static Tipping Load, Straight (With Tire Deflection)* | kg | 19 316 | 19 242 | 19 172 |
| | lb | 42,574 | 42,409 | 42,255 |
| Static Tipping Load, Straight (No Tire Deflection)* | kg | 20 669 | 20 600 | 20 537 |
| | lb | 45,556 | 45,403 | 45,263 |
| Static Tipping Load, Articulated (With Tire Deflection)* | kg | 16 799 | 16 726 | 16 658 |
| | lb | 37,026 | 36,865 | 36,716 |
| Static Tipping Load, Articulated (No Tire Deflection)* | kg | 18 165 | 18 098 | 18 036 |
| | lb | 40,036 | 39,888 | 39,753 |
| Breakout Force | kN | 190 | 185 | 180 |
| | lbf | 42,755 | 41,650 | 40,573 |
| Operating Weight* | kg | 25 790 | 25 832 | 25 870 |
| | lb | 56,840 | 56,933 | 57,016 |

*Static tipping loads and operating weights shown are based on a machine configuration with Michelin 26.5R25 XHA2 L3 radial tires, full fluids, operator, standard counterweight, cold start, roading fenders, Product Link, manual diff lock/open axles (front/rear), power train guard, secondary steering and sound suppression.

**Maximum values.

(With Tire Deflection) Full compliance to ISO 14397-1:2007 Sections 1 thru 6, which requires 2% verification between calculations and testing.

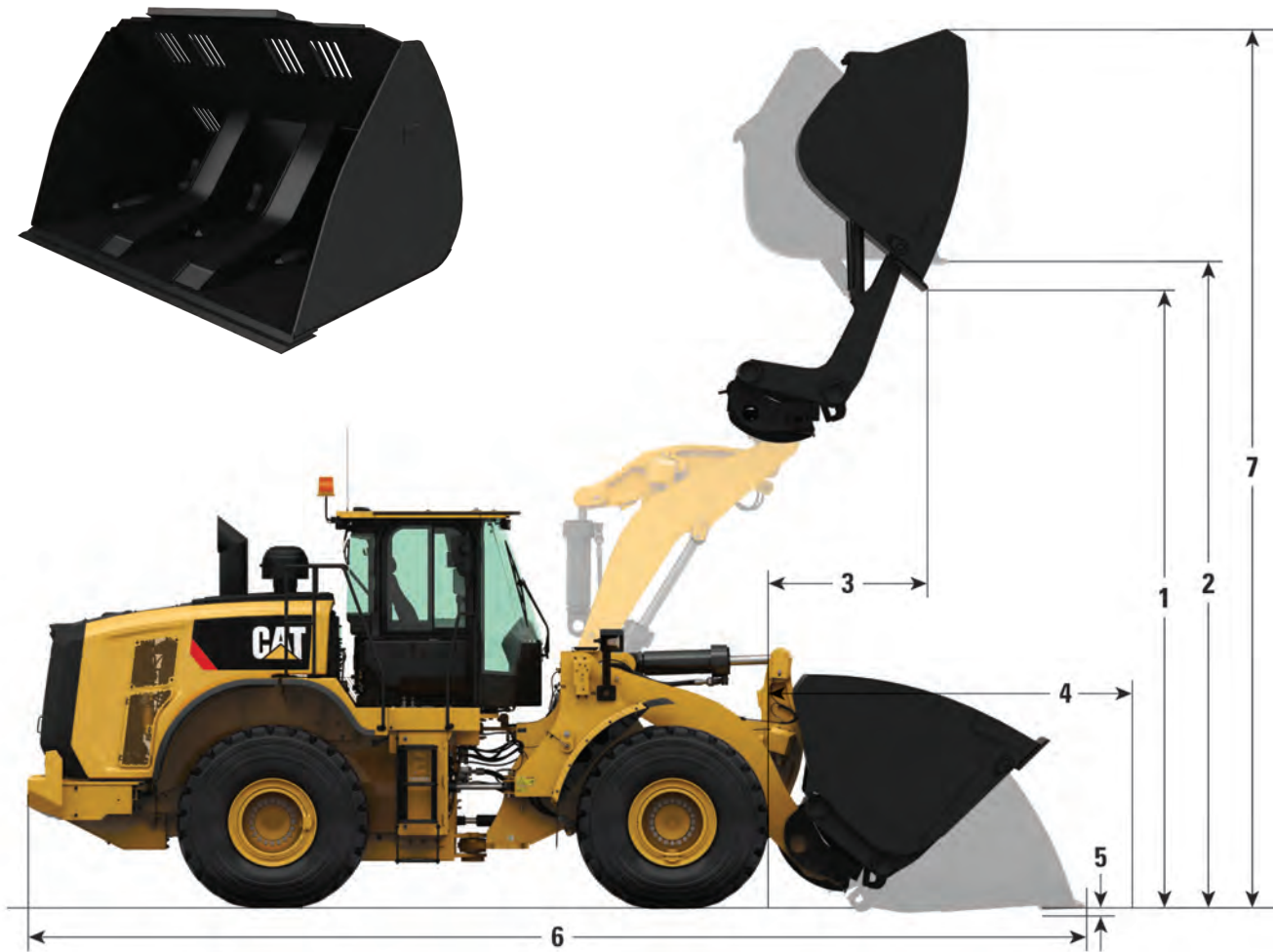
(No Tire Deflection) Compliance to ISO 14397-1:2007 Sections 1 thru 5.

†Illustration shown with Dimension charts.

972M XE Wheel Loader Standard and Optional Equipment

Light Material High Dump Buckets

All dimensions are approximate.



Bucket Key Features

- High Dump bucket increases dump height 2.8 m (9' 3") for largest size available on 972M XE
- High capacity available in Pin On, Fusion, or VCE coupler interface
- Ideal for low density and free flowing materials like wood chips and pellets
- Narrow tilt frame provides excellent cutting edge rigidity
- Adjustable windows provide a variety of configurations depending on the material being moved
- Requires 3rd valve hydraulics

972M XE Wheel Loader Specifications

Operating Specifications – Light Material High Dump Bucket – Standard Counterweight

| Package | | 972M XE Standard | | | | | | | | |
|---|-----------------|-----------------------|-----------------------|-----------------------|-----------------------|-----------------------|-----------------------|-----------------------|-----------------------|-----------------------|
| Bucket Type | | Pin On | | | Fusion | | | VCE-ISO | | |
| Edge Type | | Bolt-On Cutting Edges | Bolt-On Cutting Edges | Bolt-On Cutting Edges | Bolt-On Cutting Edges | Bolt-On Cutting Edges | Bolt-On Cutting Edges | Bolt-On Cutting Edges | Bolt-On Cutting Edges | Bolt-On Cutting Edges |
| Capacity – Rated | m ³ | 7.60 | 9.20 | 11.10 | 7.60 | 9.20 | 11.10 | 7.60 | 9.20 | 11.10 |
| | yd ³ | (10.00) | (12.00) | (14.50) | (10.00) | (12.00) | (14.50) | (10.00) | (12.00) | (14.50) |
| Capacity – Rated at 110% Fill Factor | m ³ | 8.40 | 10.10 | 12.20 | 8.40 | 10.10 | 12.20 | 8.40 | 10.10 | 12.20 |
| | yd ³ | (11.00) | (13.25) | (16.00) | (11.00) | (13.25) | (16.00) | (11.00) | (13.25) | (16.00) |
| Width | mm | 3350 | 3656 | 3656 | 3350 | 3656 | 3656 | 3350 | 3656 | 3656 |
| | ft/in | (10' 11") | (11' 11") | (11' 11") | (10' 11") | (11' 11") | (11' 11") | (10' 11") | (11' 11") | (11' 11") |
| 1 Dump Clearance at Max Lift, Max Rack, Bucket Rolled out to 45° Discharge | mm | 5008 | 4951 | 4795 | 5025 | 4968 | 4811 | 5178 | 5121 | 4965 |
| | ft/in | 14'10" | 14'8" | 14'2" | 15'1" | 14'10" | 14'4" | 15'1" | 14'10" | 14'5" |
| 2 Clearance at Max Lift, Max Rack, Bucket Rolled out to Level | mm | 5477 | 5477 | 5477 | 5494 | 5494 | 5494 | 5647 | 5647 | 5647 |
| | ft/in | 16'3" | 16'3" | 16'3" | 16'5" | 16'5" | 16'5" | 16'6" | 16'6" | 16'6" |
| 3 Reach at Max Lift, Max Rack, Bucket Rolled out to 45° Discharge | mm | 1725 | 1781 | 1936 | 1736 | 1792 | 1947 | 1839 | 1896 | 2051 |
| | ft/in | 5'11" | 6'2" | 6'8" | 6'1" | 6'4" | 6'9" | 6'1" | 6'4" | 6'9" |
| 4 Reach at Level Lift Arm and Bucket Level | mm | 3658 | 3738 | 3958 | 3678 | 3758 | 3978 | 3863 | 3943 | 4163 |
| | ft/in | 11'0" | 11'4" | 12'0" | 11'3" | 11'7" | 12'3" | 11'3" | 11'7" | 12'3" |
| 5 Digging Depth | mm | 73 | 73 | 73 | 73 | 73 | 73 | 73 | 73 | 73 |
| | ft/in | 2'3" | 2'3" | 2'3" | 2'3" | 2'3" | 2'3" | 2'3" | 2'3" | 2'3" |
| 6 Overall Length | mm | 9959 | 10039 | 10259 | 9979 | 10059 | 10279 | 10164 | 10244 | 10464 |
| | ft/in | 29'2" | 29'6" | 30'2" | 29'5" | 29'9" | 30'5" | 29'5" | 29'9" | 30'5" |
| 7 Overall Height with Bucket at Max Height and Max Rack | mm | 7386 | 7446 | 7614 | 7403 | 7463 | 7631 | 7556 | 7616 | 7784 |
| | ft/in | 22'5" | 22'6" | 23'0" | 22'7" | 22'9" | 23'3" | 22'8" | 22'9" | 23'3" |
| Loader Clearance Circle Radius with Bucket at Carry Position | mm | 7880 | 8041 | 8112 | 7856 | 8016 | 8083 | 7908 | 8069 | 8141 |
| | ft/in | 25'10" | 26'4" | 26'7" | 25'9" | 26'3" | 26'6" | 25'11" | 26'5" | 26'8" |
| Static Tipping Load, Straight (With Tire Deflection)* | kg | 16079 | 15796 | 15412 | 15629 | 15345 | 14968 | 14798 | 14520 | 14155 |
| | lb | 21,249 | 20,586 | 19,917 | 19,889 | 19,235 | 18,584 | 20,159 | 19,502 | 18,848 |
| Static Tipping Load, Straight (No Tire Deflection)* | kg | 17309 | 17031 | 16664 | 16848 | 16569 | 16208 | 15973 | 15699 | 15349 |
| | lb | 22,563 | 21,902 | 21,240 | 21,179 | 20,526 | 19,881 | 21,446 | 20,789 | 20,141 |
| Static Tipping Load, Articulated (With Tire Deflection)* | kg | 13872 | 13592 | 13223 | 13427 | 13147 | 12784 | 12671 | 12397 | 12045 |
| | lb | 17,752 | 17,109 | 16,474 | 16,440 | 15,806 | 15,188 | 16,721 | 16,083 | 15,463 |
| Static Tipping Load, Articulated (No Tire Deflection)* | kg | 15119 | 14846 | 14495 | 14667 | 14393 | 14048 | 13870 | 13602 | 13266 |
| | lb | 19,106 | 18,465 | 17,837 | 17,771 | 17,137 | 16,525 | 18,048 | 17,411 | 16,796 |
| Breakout Force | kN | 135 | 129 | 114 | 134 | 127 | 113 | 119 | 114 | 102 |
| | lbf | 24,747 | 23,123 | 20,598 | 23,678 | 22,141 | 19,766 | 23,430 | 21,913 | 19,569 |
| Operating Weight* | kg | 26018 | 26234 | 26441 | 26502 | 26718 | 26925 | 26661 | 26876 | 27084 |
| | lb | 46,273 | 46,778 | 47,159 | 47,520 | 48,027 | 48,406 | 47,033 | 47,540 | 47,922 |

*Static tipping loads and operating weights shown are based on a machine configuration with Michelin 26.5R25 XHA2 L3 radial tires, full fluids, operator, standard counterweight, cold start, roading fenders, Product Link, manual diff lock/open axles (front/rear), power train guard, secondary steering and sound suppression.

(With Tire Deflection) Full compliance to ISO 14397-1:2007 Sections 1 thru 6, which requires 2% verification between calculations and testing.

(No Tire Deflection) Compliance to ISO 14397-1:2007 Sections 1 thru 5.

972M XE Wheel Loader Specifications

Operating Specifications – Light Material High Dump Bucket – Aggregate Counterweight

| Package | | 972M XE Aggregate | | | | | | | | |
|---|-----------------|-----------------------|-----------------------|-----------------------|-----------------------|-----------------------|-----------------------|-----------------------|-----------------------|-----------------------|
| Bucket Type | | Pin On | | | Fusion | | | VCE-ISO | | |
| Edge Type | | Bolt-On Cutting Edges | Bolt-On Cutting Edges | Bolt-On Cutting Edges | Bolt-On Cutting Edges | Bolt-On Cutting Edges | Bolt-On Cutting Edges | Bolt-On Cutting Edges | Bolt-On Cutting Edges | Bolt-On Cutting Edges |
| Capacity – Rated | m ³ | 7.60 | 9.20 | 11.10 | 7.60 | 9.20 | 11.10 | 7.60 | 9.20 | 11.10 |
| | yd ³ | (10.00) | (12.00) | (14.50) | (10.00) | (12.00) | (14.50) | (10.00) | (12.00) | (14.50) |
| Capacity – Rated at 110% Fill Factor | m ³ | 8.40 | 10.10 | 12.20 | 8.40 | 10.10 | 12.20 | 8.40 | 10.10 | 12.20 |
| | yd ³ | (11.00) | (13.25) | (16.00) | (11.00) | (13.25) | (16.00) | (11.00) | (13.25) | (16.00) |
| Width | mm | 3350 | 3656 | 3656 | 3350 | 3656 | 3656 | 3350 | 3656 | 3656 |
| | ft/in | (10' 11") | (11' 11") | (11' 11") | (10' 11") | (11' 11") | (11' 11") | (10' 11") | (11' 11") | (11' 11") |
| 1 Dump Clearance at Max Lift, Max Rack, Bucket Rolled out to 45° Discharge | mm | 5008 | 4951 | 4795 | 5025 | 4968 | 4811 | 5178 | 5121 | 4965 |
| | ft/in | 14'10" | 14'8" | 14'2" | 15'1" | 14'10" | 14'4" | 15'1" | 14'10" | 14'5" |
| 2 Clearance at Max Lift, Max Rack, Bucket Rolled out to Level | mm | 5477 | 5477 | 5477 | 5494 | 5494 | 5494 | 5647 | 5647 | 5647 |
| | ft/in | 16'3" | 16'3" | 16'3" | 16'5" | 16'5" | 16'5" | 16'6" | 16'6" | 16'6" |
| 3 Reach at Max Lift, Max Rack, Bucket Rolled out to 45° Discharge | mm | 1725 | 1781 | 1936 | 1736 | 1792 | 1947 | 1839 | 1896 | 2051 |
| | ft/in | 5'11" | 6'2" | 6'8" | 6'1" | 6'4" | 6'9" | 6'1" | 6'4" | 6'9" |
| 4 Reach at Level Lift Arm and Bucket Level | mm | 3658 | 3738 | 3958 | 3678 | 3758 | 3978 | 3863 | 3943 | 4163 |
| | ft/in | 11'0" | 11'4" | 12'0" | 11'3" | 11'7" | 12'3" | 11'3" | 11'7" | 12'3" |
| 5 Digging Depth | mm | 73 | 73 | 73 | 73 | 73 | 73 | 73 | 73 | 73 |
| | ft/in | 2'3" | 2'3" | 2'3" | 2'3" | 2'3" | 2'3" | 2'3" | 2'3" | 2'3" |
| 6 Overall Length | mm | 9645 | 9725 | 9945 | 9665 | 9745 | 9965 | 9850 | 9930 | 10150 |
| | ft/in | 29'2" | 29'6" | 30'2" | 29'5" | 29'9" | 30'5" | 29'5" | 29'9" | 30'5" |
| 7 Overall Height with Bucket at Max Height and Max Rack | mm | 7386 | 7446 | 7614 | 7403 | 7463 | 7631 | 7556 | 7616 | 7784 |
| | ft/in | 22'5" | 22'6" | 23'0" | 22'7" | 22'9" | 23'3" | 22'8" | 22'9" | 23'3" |
| Loader Clearance Circle Radius with Bucket at Carry Position | mm | 7880 | 8041 | 8112 | 7856 | 8016 | 8084 | 7908 | 8069 | 8141 |
| | ft/in | 25'10" | 26'4" | 26'7" | 25'9" | 26'3" | 26'6" | 25'11" | 26'5" | 26'8" |
| Static Tipping Load, Straight (With Tire Deflection)* | kg | 17196 | 16908 | 16513 | 16742 | 16454 | 16065 | 15870 | 15589 | 15214 |
| | lb | 21,249 | 20,586 | 19,917 | 19,889 | 19,235 | 18,584 | 20,159 | 19,502 | 18,848 |
| Static Tipping Load, Straight (No Tire Deflection)* | kg | 18534 | 18252 | 17877 | 18068 | 17785 | 17415 | 17149 | 16872 | 16513 |
| | lb | 22,563 | 21,902 | 21,240 | 21,179 | 20,526 | 19,881 | 21,446 | 20,789 | 20,141 |
| Static Tipping Load, Articulated (With Tire Deflection)* | kg | 14816 | 14533 | 14153 | 14368 | 14084 | 13710 | 13577 | 13299 | 12938 |
| | lb | 17,752 | 17,109 | 16,474 | 16,440 | 15,806 | 15,188 | 16,721 | 16,083 | 15,463 |
| Static Tipping Load, Articulated (No Tire Deflection)* | kg | 16178 | 15903 | 15544 | 15722 | 15445 | 15092 | 14887 | 14616 | 14273 |
| | lb | 19,106 | 18,465 | 17,837 | 17,771 | 17,137 | 16,525 | 18,048 | 17,411 | 16,796 |
| Breakout Force | kN | 135 | 129 | 114 | 134 | 127 | 113 | 119 | 114 | 102 |
| | lbf | 24,747 | 23,123 | 20,598 | 23,678 | 22,141 | 19,766 | 23,430 | 21,913 | 19,569 |
| Operating Weight* | kg | 26603 | 26819 | 27026 | 27087 | 27303 | 27510 | 27246 | 27461 | 27669 |
| | lb | 46,273 | 46,778 | 47,159 | 47,520 | 48,027 | 48,406 | 47,033 | 47,540 | 47,922 |

*Static tipping loads and operating weights shown are based on a machine configuration with Michelin 26.5R25 XHA2 L3 radial tires, full fluids, operator, auxiliary counterweight, cold start, roading fenders, Product Link, manual diff lock/open axles (front/rear), power train guard, secondary steering and sound suppression.

(With Tire Deflection) Full compliance to ISO 14397-1:2007 Sections 1 thru 6, which requires 2% verification between calculations and testing.

(No Tire Deflection) Compliance to ISO 14397-1:2007 Sections 1 thru 5.

972M XE Wheel Loader Specifications

Operating Specifications – Light Material High Dump Bucket – High Lift Linkage

| Package | | 972M XE High Lift | | | | | | | | |
|---|-----------------|-----------------------|-----------------------|-----------------------|-----------------------|-----------------------|-----------------------|-----------------------|-----------------------|-----------------------|
| Bucket Type | | Pin On | | | Fusion | | | VCE-ISO | | |
| Edge Type | | Bolt-On Cutting Edges | Bolt-On Cutting Edges | Bolt-On Cutting Edges | Bolt-On Cutting Edges | Bolt-On Cutting Edges | Bolt-On Cutting Edges | Bolt-On Cutting Edges | Bolt-On Cutting Edges | Bolt-On Cutting Edges |
| Capacity – Rated | m ³ | 7.60 | 9.20 | 11.10 | 7.60 | 9.20 | 11.10 | 7.60 | 9.20 | 11.10 |
| | yd ³ | (10.00) | (12.00) | (14.50) | (10.00) | (12.00) | (14.50) | (10.00) | (12.00) | (14.50) |
| Capacity – Rated at 110% Fill Factor | m ³ | 8.40 | 10.10 | 12.20 | 8.40 | 10.10 | 12.20 | 8.40 | 10.10 | 12.20 |
| | yd ³ | (11.00) | (13.25) | (16.00) | (11.00) | (13.25) | (16.00) | (11.00) | (13.25) | (16.00) |
| Width | mm | 3350 | 3656 | 3656 | 3350 | 3656 | 3656 | 3350 | 3656 | 3656 |
| | ft/in | (10' 11") | (11' 11") | (11' 11") | (10' 11") | (11' 11") | (11' 11") | (10' 11") | (11' 11") | (11' 11") |
| 1 Dump Clearance at Max Lift, Max Rack, Bucket Rolled out to 45° Discharge | mm | 5638 | 5592 | 5468 | 5656 | 5611 | 5487 | 5831 | 5786 | 5662 |
| | ft/in | 14'10" | 14'8" | 14'2" | 15'1" | 14'10" | 14'4" | 15'1" | 14'10" | 14'5" |
| 2 Clearance at Max Lift, Max Rack, Bucket Rolled out to Level | mm | 6022 | 6022 | 6022 | 6041 | 6041 | 6041 | 6216 | 6216 | 6216 |
| | ft/in | 16'3" | 16'3" | 16'3" | 16'5" | 16'5" | 16'5" | 16'6" | 16'6" | 16'6" |
| 3 Reach at Max Lift, Max Rack, Bucket Rolled out to 45° Discharge | mm | 1522 | 1588 | 1769 | 1529 | 1595 | 1776 | 1589 | 1655 | 1837 |
| | ft/in | 5'11" | 6'2" | 6'8" | 6'1" | 6'4" | 6'9" | 6'1" | 6'4" | 6'9" |
| 4 Reach at Level Lift Arm and Bucket Level | mm | 3932 | 4012 | 4232 | 3952 | 4032 | 4252 | 4137 | 4217 | 4437 |
| | ft/in | 11'0" | 11'4" | 12'0" | 11'3" | 11'7" | 12'3" | 11'3" | 11'7" | 12'3" |
| 5 Digging Depth | mm | 68 | 68 | 68 | 68 | 68 | 68 | 68 | 68 | 68 |
| | ft/in | 2'3" | 2'3" | 2'3" | 2'3" | 2'3" | 2'3" | 2'3" | 2'3" | 2'3" |
| 6 Overall Length | mm | 10294 | 10374 | 10594 | 10314 | 10394 | 10614 | 10499 | 10579 | 10799 |
| | ft/in | 29'2" | 29'6" | 30'2" | 29'5" | 29'9" | 30'5" | 29'5" | 29'9" | 30'5" |
| 7 Overall Height with Bucket at Max Height and Max Rack | mm | 7929 | 7989 | 8157 | 7948 | 8008 | 8176 | 8123 | 8183 | 8351 |
| | ft/in | 22'5" | 22'6" | 23'0" | 22'7" | 22'9" | 23'3" | 22'8" | 22'9" | 23'3" |
| Loader Clearance Circle Radius with Bucket at Carry Position | mm | 8063 | 8223 | 8300 | 8037 | 8196 | 8270 | 8096 | 8256 | 8334 |
| | ft/in | 26'5" | 26'11" | 27'2" | 26'4" | 26'10" | 27'1" | 26'6" | 27'1" | 27'4" |
| Static Tipping Load, Straight (With Tire Deflection)* | kg | 14965 | 14719 | 14434 | 14510 | 14263 | 13982 | 13847 | 13603 | 13326 |
| | lb | 21,249 | 20,586 | 19,917 | 19,889 | 19,235 | 18,584 | 20,159 | 19,502 | 18,848 |
| Static Tipping Load, Straight (No Tire Deflection)* | kg | 16088 | 15850 | 15593 | 15620 | 15379 | 15124 | 14936 | 14698 | 14444 |
| | lb | 22,563 | 21,902 | 21,240 | 21,179 | 20,526 | 19,881 | 21,446 | 20,789 | 20,141 |
| Static Tipping Load, Articulated (With Tire Deflection)* | kg | 12878 | 12632 | 12352 | 12427 | 12179 | 11902 | 11821 | 11577 | 11303 |
| | lb | 17,752 | 17,109 | 16,474 | 16,440 | 15,806 | 15,188 | 16,721 | 16,083 | 15,463 |
| Static Tipping Load, Articulated (No Tire Deflection)* | kg | 13994 | 13757 | 13503 | 13532 | 13293 | 13040 | 12908 | 12670 | 12419 |
| | lb | 19,106 | 18,465 | 17,837 | 17,771 | 17,137 | 16,525 | 18,048 | 17,411 | 16,796 |
| Breakout Force | kN | 131 | 124 | 111 | 129 | 123 | 109 | 115 | 110 | 98 |
| | lbf | 24,747 | 23,123 | 20,598 | 23,678 | 22,141 | 19,766 | 23,430 | 21,913 | 19,569 |
| Operating Weight* | kg | 26103 | 26319 | 26526 | 26587 | 26803 | 27010 | 26746 | 26961 | 27169 |
| | lb | 46,273 | 46,778 | 47,159 | 47,520 | 48,027 | 48,406 | 47,033 | 47,540 | 47,922 |

*Static tipping loads and operating weights shown are based on a machine configuration with Michelin 26.5R25 XHA2 L3 radial tires, full fluids, operator, aggregate counterweight, cold start, roading fenders, Product Link, manual diff lock/open axles (front/rear), power train guard, secondary steering and sound suppression.

(With Tire Deflection) Full compliance to ISO 14397-1:2007 Sections 1 thru 6, which requires 2% verification between calculations and testing.

(No Tire Deflection) Compliance to ISO 14397-1:2007 Sections 1 thru 5.

972M XE Wheel Loader Specifications

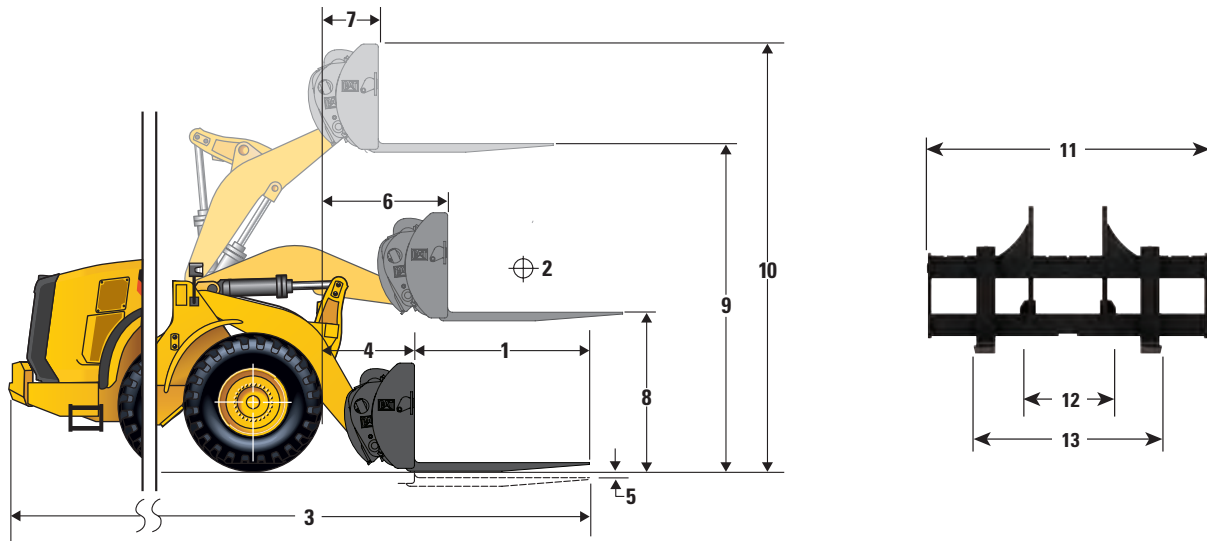
Woodchip Buckets



| Package | | Standard | | Aggregate | |
|--|-----------------|-----------------------|-----------------------|-----------------------|-----------------------|
| | | Pin-On | Fusion | Pin-On | Fusion |
| Bucket Type | | Bolt-On Cutting Edges | Bolt-On Cutting Edges | Bolt-On Cutting Edges | Bolt-On Cutting Edges |
| Capacity – Rated | m ³ | 14.0 | 14.0 | 14.0 | 14.0 |
| | yd ³ | 18.25 | 18.25 | 18.25 | 18.25 |
| Capacity – Rated at 110% Fill Factor | m ³ | 15.4 | 15.4 | 15.4 | 15.4 |
| | yd ³ | 20.25 | 20.25 | 20.25 | 20.25 |
| Width | mm | 3943 | 3943 | 3943 | 3943 |
| | ft/in | 12' 11" | 12' 11" | 12' 11" | 12' 11" |
| 16 Dump Clearance at Maximum Lift and 45° Discharge | mm | 2514 | 2514 | 2514 | 2514 |
| | ft/in | 8' 2" | 8' 3" | 8' 2" | 8' 3" |
| 17 Reach at Maximum Lift and 45° Discharge | mm | 1828 | 1868 | 1828 | 1868 |
| | ft/in | 6' 0" | 6' 1" | 6' 0" | 6' 1" |
| Reach at Level Lift Arm and Bucket Level | mm | 3816 | 3844 | 3816 | 3844 |
| | ft/in | 12' 6" | 12' 7" | 12' 6" | 12' 7" |
| A † Digging Depth | mm | 123 | 95 | 123 | 95 |
| | ft/in | 4.8" | 3.7" | 4.8" | 3.7" |
| 12 † Overall Length | mm | 10 132 | 10 139 | 9818 | 9825 |
| | ft/in | 33' 3" | 33' 4" | 32' 3" | 32' 3" |
| B † Overall Height with Bucket at Maximum Lift | mm | 7007 | 7040 | 7007 | 7040 |
| | ft/in | 22' 12" | 23' 2" | 22' 12" | 23' 2" |
| Loader Clearance Circle Radius with Bucket at Carry Position | mm | 8167 | 8167 | 8167 | 8167 |
| | ft/in | 26' 9" | 26' 9" | 26' 9" | 26' 9" |
| Static Tipping Load, Straight (ISO) | kg | 16 456 | 16 126 | 17 618 | 17 304 |
| | lb | 36,270 | 35,543 | 38,831 | 38,139 |
| Static Tipping Load, Straight (Rigid Tire) | kg | 17 778 | 17 414 | 19 059 | 18 700 |
| | lb | 39,182 | 38,381 | 42,007 | 41,215 |
| Static Tipping Load, Articulated (ISO) | kg | 14 191 | 13 850 | 15 173 | 14 849 |
| | lb | 31,278 | 30,526 | 33,443 | 32,727 |
| Static Tipping Load, Articulated (Rigid Tire) | kg | 15 523 | 15 153 | 16 632 | 16 265 |
| | lb | 34,213 | 33,397 | 36,657 | 35,849 |
| Breakout Force | kN | 120 | 118 | 120 | 118 |
| | lbf | 27,046 | 26,540 | 27,046 | 26,540 |
| Operating Weight | kg | 25 508 | 26 045 | 26 092 | 26 629 |
| | lb | 56,218 | 57,402 | 57,506 | 58,690 |

972M XE Wheel Loader Specifications

Pallet and Construction Forks – ITA



Pallet Fork - Fusion

| | 60" Tines | | 72" Tines | |
|--------------------------------|-----------|-----------|-----------|-----------|
| | mm | ft' in" | mm | ft' in" |
| 1 Fork Tine Length | 1524 | 5' 0" | 1830 | 6' 0" |
| 2 Load Center | 762 | 2' 6" | 915 | 3' 0" |
| 3 Overall Length | 9735 | 31' 11" | 10 041 | 32' 11" |
| 4 Reach at Ground | 1295 | 4' 3" | 1295 | 4' 3" |
| 5 Dig Depth | -90 | -3.5" | -90 | -3.5" |
| 6 Reach with Level Arm | 1827 | 6' 0" | 1827 | 6' 0" |
| 7 Reach at Full Lift | 782 | 2' 7" | 782 | 2' 7" |
| 8 Clearance with Level Arm | 1857 | 6' 1" | 1857 | 6' 1" |
| 9 Clearance at Full Lift | 4162 | 13' 8" | 4162 | 13' 8" |
| 10 Overall Height | 4385 | 14' 5" | 4385 | 14' 5" |
| 11 Carriage Width | 2217 | 7' 3" | 2217 | 7' 3" |
| 12 Minimum Fork Spacing | 470 | 1' 7" | 470 | 1' 7" |
| 13 Maximum Fork Spacing | 2070 | 6' 10" | 2070 | 6' 10" |
| Tine Width | 150 | 6" | 150 | 6" |
| Tine Thickness | 65 | 2.5" | 65 | 2.5" |
| | kg | lb | kg | lb |
| Load Capacity (per pair) | 6300 | 13,892 | 5246 | 11,567 |
| Tipping Load – Straight* | 13 970 | 30,804 | 13 340 | 29,415 |
| Tipping Load – Full Turn* | 12 288 | 27,095 | 11 729 | 25,862 |
| Operating Weight | 23 949 | 52,808 | 23 990 | 52,898 |
| Rated Load % of Full Turn Tip: | | | | |
| 50% of Tip** | 6144 | 13,548 | 5865 | 12,932 |
| 60% of Tip (rough terrain)*** | 7373 | 16,257 | 7038 | 15,519 |
| 80% of Tip (firm and level)*** | 9830 | 21,675 | 9383 | 20,690 |

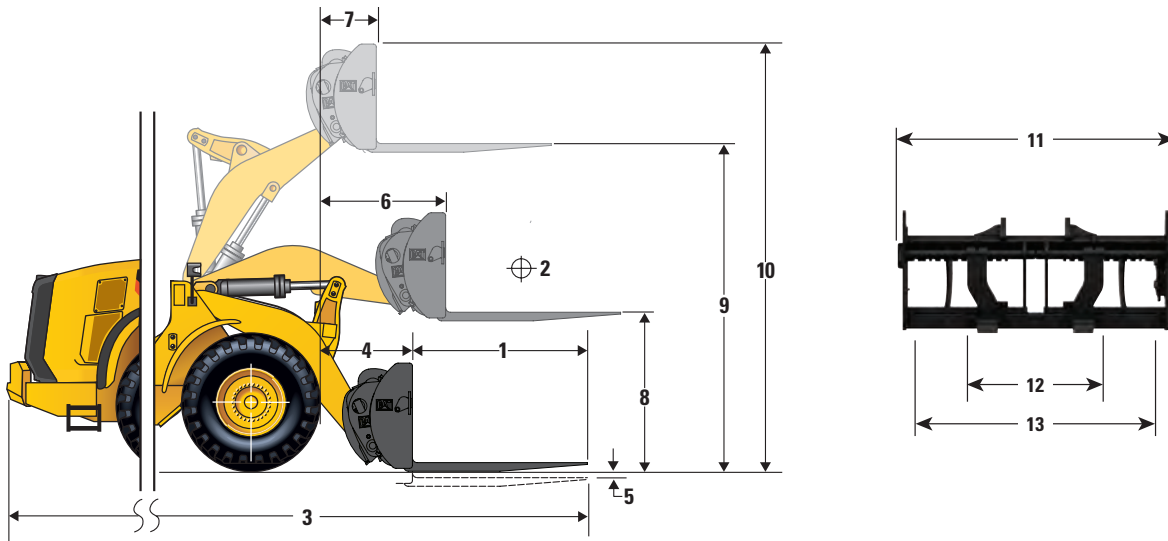
*ISO 14397-1:2007

**SAE J1197 – 50% of full turn static tipping load or hydraulic limit.

***EN474-3 – 80% of full turn static tipping load on firm and level ground or hydraulic limit.

972M XE Wheel Loader Specifications

Operating Specifications – 96" Construction Fork



| Construction Fork - Fusion | | | | | | | | | | |
|-----------------------------------|-----------|-----------|-----------|-----------|-----------|-----------|-----------|-----------|-----------|-----------|
| | 48" Tines | | 60" Tines | | 72" Tines | | 84" Tines | | 96" Tines | |
| | mm | ft' in" | mm | ft' in" | mm | ft' in" | mm | ft' in" | mm | ft' in" |
| 1 Fork Tine Length | 1220 | 4' 0" | 1524 | 5' 0" | 1830 | 6' 0" | 2134 | 7' 0" | 2438 | 8' 0" |
| 2 Load Center | 610 | 2' 0" | 762 | 2' 6" | 915 | 3' 0" | 1067 | 3' 6" | 1220 | 4' 0" |
| 3 Overall Length | 9384 | 30' 9" | 9707 | 31' 10" | 10 012 | 32' 10" | 10 317 | 33' 10" | 10 621 | 34' 10" |
| 4 Reach at Ground | 1248 | 4' 1" | 1248 | 4' 1" | 1248 | 4' 1" | 1248 | 4' 1" | 1248 | 4' 1" |
| 5 Dig Depth | 14 | 0.6" | 14 | 0.6" | 14 | 0.6" | 14 | 0.6" | 14 | 0.6" |
| 6 Reach with Level Arm | 1818 | 6' 0" | 1818 | 6' 0" | 1818 | 6' 0" | 1818 | 6' 0" | 1818 | 6' 0" |
| 7 Reach at Full Lift | 773 | 2' 6" | 773 | 2' 6" | 773 | 2' 6" | 773 | 2' 6" | 773 | 2' 6" |
| 8 Clearance with Level Arm | 1961 | 6' 5" | 1961 | 6' 5" | 1961 | 6' 5" | 1961 | 6' 5" | 1961 | 6' 5" |
| 9 Clearance at Full Lift | 4266 | 14' 0" | 4266 | 14' 0" | 4266 | 14' 0" | 4266 | 14' 0" | 4266 | 14' 0" |
| 10 Overall Height | 5307 | 17' 5" | 5307 | 17' 5" | 5307 | 17' 5" | 5307 | 17' 5" | 5307 | 17' 5" |
| 11 Carriage Width | 2528 | 8' 4" | 2528 | 8' 4" | 2528 | 8' 4" | 2528 | 8' 4" | 2528 | 8' 4" |
| 12 Minimum Fork Spacing | 576 | 1' 11" | 576 | 1' 11" | 576 | 1' 11" | 576 | 1' 11" | 576 | 1' 11" |
| 13 Maximum Fork Spacing | 2178 | 7' 2" | 2178 | 7' 2" | 2178 | 7' 2" | 2178 | 7' 2" | 2178 | 7' 2" |
| Tine Width | 180 | 7" | 180 | 7" | 180 | 7" | 180 | 7" | 180 | 7" |
| Tine Thickness | 90 | 3.5" | 90 | 3.5" | 90 | 3.5" | 90 | 3.5" | 90 | 3.5" |
| | kg | lb | kg | lb | kg | lb | kg | lb | kg | lb |
| Load Capacity (per pair) | 22 200 | 48,951 | 17 800 | 39,249 | 14 800 | 32,634 | 12 700 | 28,004 | 11 300 | 24,917 |
| Tipping Load – Straight* | 14 400 | 31,752 | 13 644 | 30,085 | 13 012 | 28,691 | 12 425 | 27,397 | 11 881 | 26,198 |
| Tipping Load – Full Turn* | 12 636 | 27,862 | 11 963 | 26,378 | 11 401 | 25,139 | 10 879 | 23,988 | 10 394 | 22,919 |
| Operating Weight | 24 252 | 53,476 | 24 316 | 53,617 | 24 378 | 53,753 | 24 441 | 53,892 | 24 503 | 54,029 |
| Rated Load % of Full Turn Tip: | | | | | | | | | | |
| 50% of Tip** | 6318 | 13,931 | 5981 | 13,188 | 5701 | 12,571 | 5439 | 11,993 | 5197 | 11,459 |
| 60% of Tip (rough terrain)*** | 7581 | 16,716 | 7178 | 15,827 | 6841 | 15,084 | 6527 | 14,392 | 6237 | 13,753 |
| 80% of Tip (firm and level)*** | 10 108 | 22,288 | 9570 | 21,102 | 9121 | 20,112 | 8703 | 19,190 | 8315 | 18,335 |

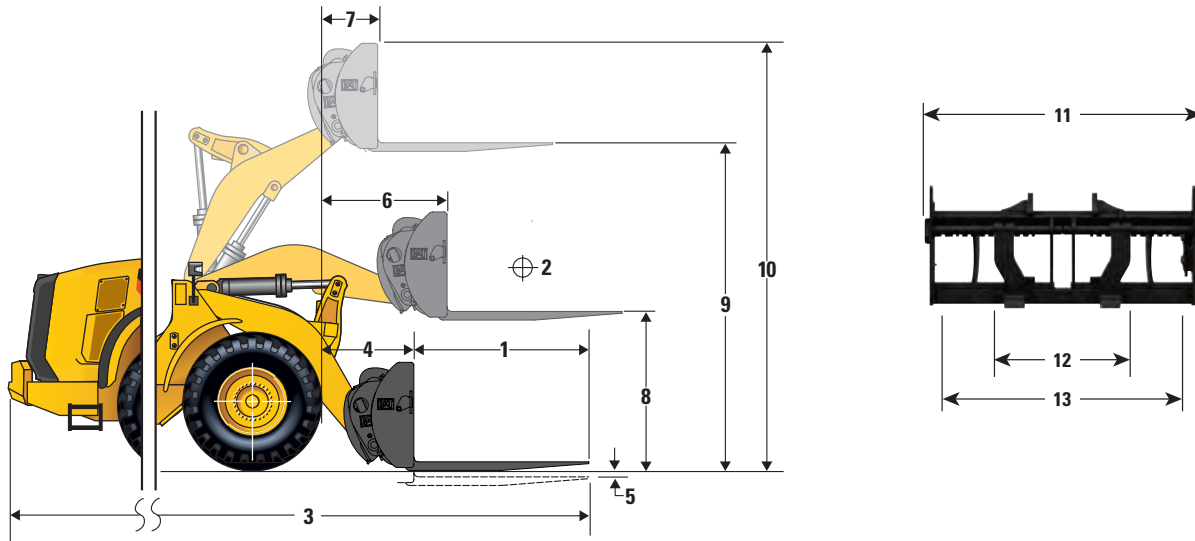
*ISO 14397-1:2007

**SAE J1197 – 50% of full turn static tipping load or hydraulic limit.

***EN474-3 – 80% of full turn static tipping load on firm and level ground or hydraulic limit.

972M XE Wheel Loader Specifications

Operating Specifications – 108" Construction Fork



| Construction Fork - Fusion | | | | | | | | | | |
|-----------------------------------|-----------|-----------|-----------|-----------|-----------|-----------|-----------|-----------|-----------|-----------|
| | 48" Tines | | 60" Tines | | 72" Tines | | 84" Tines | | 96" Tines | |
| | mm | ft' in" | mm | ft' in" | mm | ft' in" | mm | ft' in" | mm | ft' in" |
| 1 Fork Tine Length | 1220 | 4' 0" | 1524 | 5' 0" | 1830 | 6' 0" | 2134 | 7' 0" | 2438 | 7' 12" |
| 2 Load Center | 610 | 2' 0" | 762 | 2' 6" | 915 | 3' 0" | 1067 | 3' 6" | 1220 | 4' 0" |
| 3 Overall Length | 9384 | 30' 9" | 9707 | 31' 10" | 10 012 | 32' 10" | 10 317 | 33' 10" | 10 621 | 34' 10" |
| 4 Reach at Ground | 1248 | 4' 1" | 1248 | 4' 1" | 1248 | 4' 1" | 1248 | 4' 1" | 1248 | 4' 1" |
| 5 Dig Depth | 14 | 0.6" | 14 | 0.6" | 14 | 0.6" | 14 | 0.6" | 14 | 0.6" |
| 6 Reach with Level Arm | 1818 | 5' 12" | 1818 | 5' 12" | 1818 | 5' 12" | 1818 | 5' 12" | 1818 | 5' 12" |
| 7 Reach at Full Lift | 773 | 2' 6" | 773 | 2' 6" | 773 | 2' 6" | 773 | 2' 6" | 773 | 2' 6" |
| 8 Clearance with Level Arm | 1961 | 6' 5" | 1961 | 6' 5" | 1961 | 6' 5" | 1961 | 6' 5" | 1961 | 6' 5" |
| 9 Clearance at Full Lift | 4266 | 13' 12" | 4266 | 13' 12" | 4266 | 13' 12" | 4266 | 13' 12" | 4266 | 13' 12" |
| 10 Overall Height | 5307 | 17' 5" | 5307 | 17' 5" | 5307 | 17' 5" | 5307 | 17' 5" | 5307 | 17' 5" |
| 11 Carriage Width | 2528 | 8' 4" | 2528 | 8' 4" | 2528 | 8' 4" | 2528 | 8' 4" | 2528 | 8' 4" |
| 12 Minimum Fork Spacing | 576 | 1' 11" | 576 | 1' 11" | 576 | 1' 11" | 576 | 1' 11" | 576 | 1' 11" |
| 13 Maximum Fork Spacing | 2178 | 7' 2" | 2178 | 7' 2" | 2178 | 7' 2" | 2178 | 7' 2" | 2178 | 7' 2" |
| Tine Width | 180 | 7.1" | 180 | 7.1" | 180 | 7.1" | 180 | 7.1" | 180 | 7.1" |
| Tine Thickness | 90 | 3.5" | 90 | 3.5" | 90 | 3.5" | 90 | 3.5" | 90 | 3.5" |
| | kg | lb | kg | lb | kg | lb | kg | lb | kg | lb |
| Load Capacity (per pair) | 22 200 | 48,951 | 17 800 | 39,249 | 14 800 | 32,634 | 12 700 | 28,004 | 11 300 | 24,917 |
| Tipping Load – Straight* | 14 359 | 31,662 | 13 607 | 30,003 | 12 977 | 28,614 | 12 392 | 27,324 | 11 848 | 26,125 |
| Tipping Load – Full Turn* | 12 595 | 27,772 | 11 927 | 26,299 | 11 366 | 25,062 | 10 846 | 23,915 | 10 362 | 22,848 |
| Operating Weight | 24 305 | 53,593 | 24 366 | 53,727 | 24 428 | 53,864 | 24 490 | 54,000 | 24 553 | 54,139 |
| Rated Load % of Full Turn Tip: | | | | | | | | | | |
| 50% of Tip** | 6297 | 13,885 | 5963 | 13,148 | 5683 | 12,531 | 5423 | 11,958 | 5181 | 11,424 |
| 60% of Tip (rough terrain)*** | 7557 | 16,663 | 7156 | 15,779 | 6820 | 15,038 | 6508 | 14,350 | 6217 | 13,708 |
| 80% of Tip (firm and level)*** | 10 076 | 22,218 | 9541 | 21,038 | 9093 | 20,050 | 8677 | 19,133 | 8289 | 18,277 |

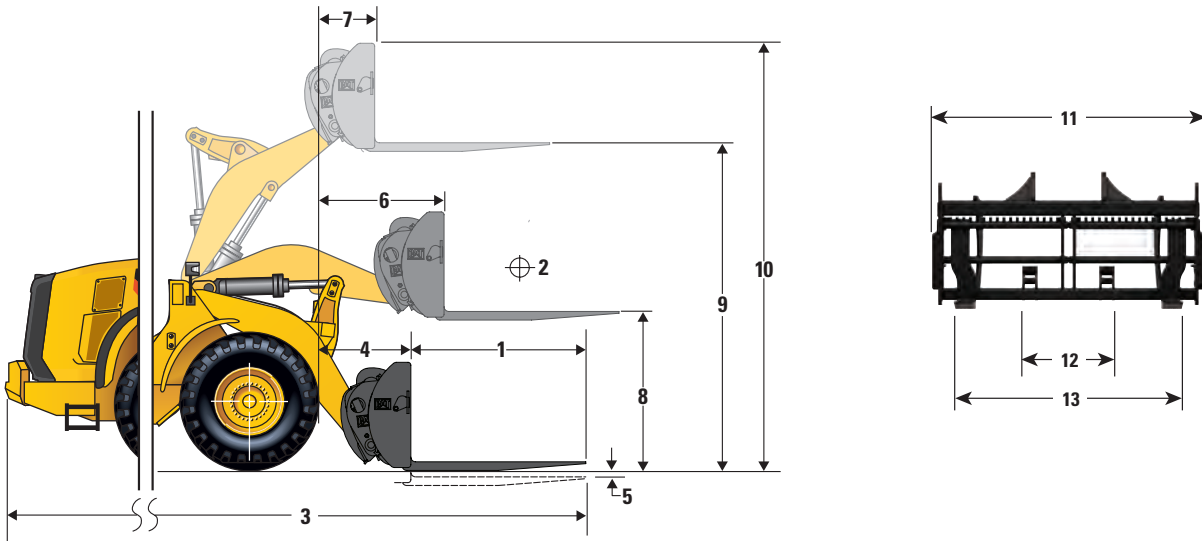
*ISO 14397-1:2007

**SAE J1197 – 50% of full turn static tipping load or hydraulic limit.

***EN474-3 – 80% of full turn static tipping load on firm and level ground or hydraulic limit.

972M XE Wheel Loader Specifications

Operating Specifications – 87" Carriage Pallet Fork



| | Pallet Fork - Fusion | | | | | |
|-----------------------------------|----------------------|-----------|-----------|-----------|-----------|-----------|
| | 48" Tines | | 60" Tines | | 72" Tines | |
| | mm | ft' in" | mm | ft' in" | mm | ft' in" |
| 1 Fork Tine Length | 1220 | 4' 0" | 1524 | 5' 0" | 1830 | 6' 0" |
| 2 Load Center | 610 | 2' 0" | 762 | 2' 6" | 915 | 3' 0" |
| 3 Overall Length | 9306 | 30' 6" | 9611 | 31' 6" | 9916 | 32' 6" |
| 4 Reach at Ground | 1171 | 3' 10" | 1171 | 3' 10" | 1171 | 3' 10" |
| 5 Dig Depth | -72 | -2.8" | -72 | -2.8" | -72 | -2.8" |
| 6 Reach with Level Arm | 1716 | 5' 8" | 1716 | 5' 8" | 1716 | 5' 8" |
| 7 Reach at Full Lift | 671 | 2' 2" | 671 | 2' 2" | 671 | 2' 2" |
| 8 Clearance with Level Arm | 1874 | 6' 2" | 1874 | 6' 2" | 1874 | 6' 2" |
| 9 Clearance at Full Lift | 4180 | 13' 9" | 4180 | 13' 9" | 4180 | 13' 9" |
| 10 Overall Height | 5249 | 17' 3" | 5249 | 17' 3" | 5249 | 17' 3" |
| 11 Carriage Width | 2235 | 7' 4" | 2235 | 7' 4" | 2235 | 7' 4" |
| 12 Minimum Fork Spacing | 385 | 1' 3" | 385 | 1' 3" | 385 | 1' 3" |
| 13 Maximum Fork Spacing | 1947 | 6' 5" | 1947 | 6' 5" | 1947 | 6' 5" |
| Tine Width | 150 | 6" | 150 | 6" | 150 | 6" |
| Tine Thickness | 65 | 2.5" | 65 | 2.5" | 65 | 2.5" |
| | kg | lb | kg | lb | kg | lb |
| Load Capacity (per pair) | 8800 | 19,404 | 6590 | 14,531 | 5850 | 12,899 |
| Tipping Load – Straight* | 15 248 | 33,622 | 14 527 | 32,032 | 13 866 | 30,575 |
| Tipping Load – Full Turn* | 13 427 | 29,607 | 12 789 | 28,200 | 12 203 | 26,908 |
| Operating Weight | 23 791 | 52,459 | 23 829 | 52,543 | 23 866 | 52,625 |
| Rated Load % of Full Turn Tip: | | | | | | |
| 50% of Tip** | 6714 | 14,804 | 6395 | 14,101 | 6102 | 13,455 |
| 60% of Tip (rough terrain)*** | 8056 | 17,763 | 7673 | 16,919 | 7322 | 16,145 |
| 80% of Tip (firm and level)*** | 10 742 | 23,686 | 10 231 | 22,559 | 9763 | 21,527 |

*ISO 14397-1:2007

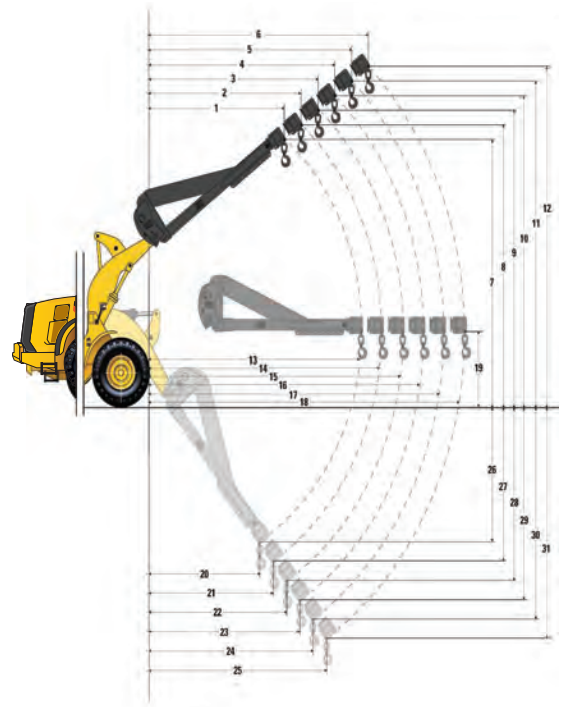
**SAE J1197 – 50% of full turn static tipping load or hydraulic limit.

***EN474-3 – 80% of full turn static tipping load on firm and level ground or hydraulic limit.

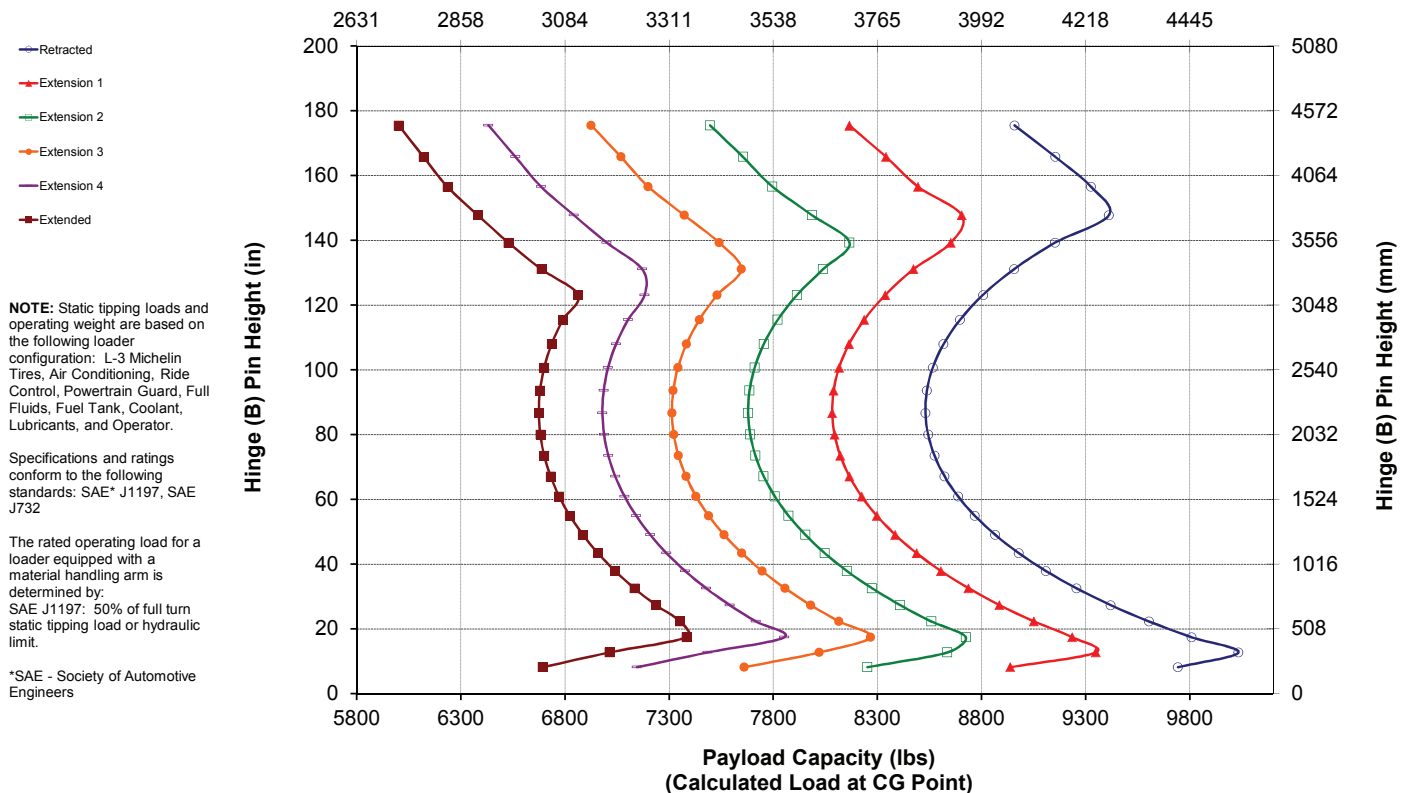
972M XE Wheel Loader Specifications

Material Handling Arm – Standard Fusion

| MHA Specifications | Retracted | Extension 1 | Extension 2 | Extension 3 | Extension 4 | Extended |
|---|-------------------|-------------|-------------|-------------|-------------|----------|
| Max Lift - Hook Reach (1, 2, 3, 4, 5, 6) | mm 2,067 | 2,207 | 2,347 | 2,488 | 2,628 | 2,769 |
| | ft. in 6' 9" | 7' 2" | 7' 8" | 8' 1" | 8' 7" | 9' 1" |
| Max Lift - Hook Height (7, 8, 9, 10, 11, 12) | mm 7,275 | 7,545 | 7,816 | 8,086 | 8,357 | 8,627 |
| | ft. in 23' 10" | 24' 9" | 25' 7" | 26' 6" | 27' 5" | 28' 3" |
| Level - Hook Reach (13, 14, 15, 16, 17, 18) | mm 4,686 | 4,991 | 5,296 | 5,600 | 5,905 | 6,210 |
| | ft. in 15' 4" | 16' 4" | 17' 4" | 18' 4" | 19' 4" | 20' 4" |
| Level - Hook Height (19) | mm 1,928 | 1,928 | 1,928 | 1,928 | 1,928 | 1,928 |
| | ft. in 6' 3.8" | 6' 3.8" | 6' 3.8" | 6' 3.8" | 6' 3.8" | 6' 3.8" |
| Min Lift - Hook Reach (20, 21, 22, 23, 24, 25) | mm 1,890 | 2,020 | 2,149 | 2,278 | 2,407 | 2,537 |
| | ft. in 6' 2" | 6' 7" | 7' 0" | 7' 5" | 7' 10" | 8' 3" |
| Min Lift - Hook Height (26, 27, 28, 29, 30, 31) | mm (2,868) | (3,144) | (3,420) | (3,696) | (3,972) | (4,248) |
| | ft. in -9' 7" | -10' 8" | -11' 9" | -12' 10" | -13' 11" | -13' 0" |
| Static Tipping Load, Straight | kg 8,802 | 8,340 | 7,923 | 7,545 | 7,201 | 6,885 |
| | lb 19,401 | 18,382 | 17,463 | 16,629 | 15,870 | 15,176 |
| Static Tipping Load, Articulated | kg 7,768 | 7,359 | 6,991 | 6,657 | 6,352 | 6,074 |
| | lb 17,120 | 16,220 | 15,408 | 14,671 | 14,000 | 13,386 |
| Operating Weight | kg 23,701 | 23,701 | 23,701 | 23,701 | 23,701 | 23,701 |
| | lb 52,237 | 52,237 | 52,237 | 52,237 | 52,237 | 52,237 |



**Payload Capacity (kg)
(Calculated Load at CG Point)**



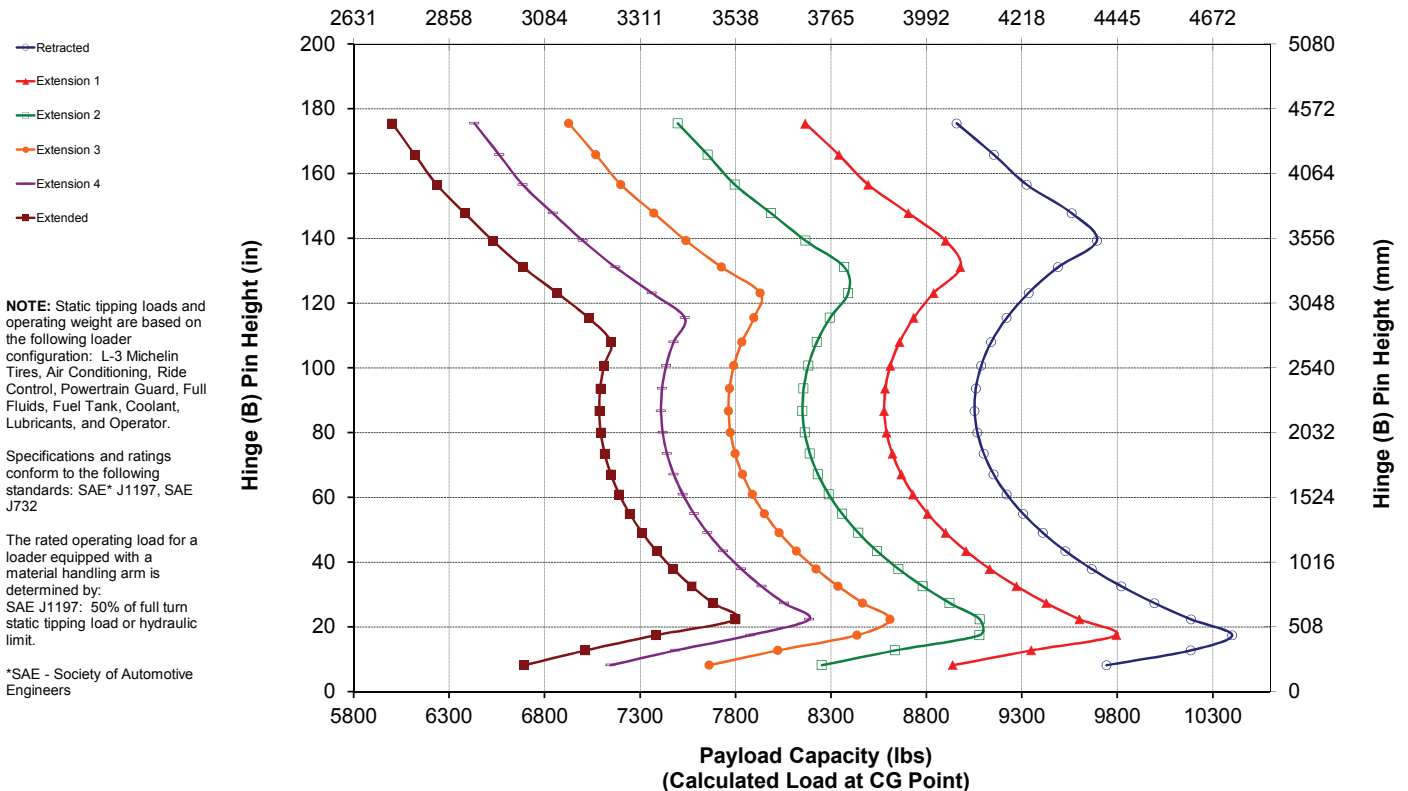
972M XE Wheel Loader Specifications

Material Handling Arm – Aggregate Fusion

| MHA Specifications | Retracted | Extension 1 | Extension 2 | Extension 3 | Extension 4 | Extended | |
|---|-----------|-------------|-------------|-------------|-------------|----------|---------|
| Max Lift - Hook Reach (1, 2, 3, 4, 5, 6) | mm | 2,067 | 2,207 | 2,347 | 2,488 | 2,628 | 2,769 |
| | ft. in | 6' 9" | 7' 2" | 7' 8" | 8' 1" | 8' 7" | 9' 1" |
| Max Lift - Hook Height (7, 8, 9, 10, 11, 12) | mm | 7,275 | 7,545 | 7,816 | 8,086 | 8,357 | 8,627 |
| | ft. in | 23' 10" | 24' 9" | 25' 7" | 26' 6" | 27' 5" | 28' 3" |
| Level - Hook Reach (13, 14, 15, 16, 17, 18) | mm | 4,686 | 4,991 | 5,296 | 5,600 | 5,905 | 6,210 |
| | ft. in | 15' 4" | 16' 4" | 17' 4" | 18' 4" | 19' 4" | 20' 4" |
| Level - Hook Height (19) | mm | 1,928 | 1,928 | 1,928 | 1,928 | 1,928 | 1,928 |
| | ft. in | 6' 3.8" | 6' 3.8" | 6' 3.8" | 6' 3.8" | 6' 3.8" | 6' 3.8" |
| Min Lift - Hook Reach (20, 21, 22, 23, 24, 25) | mm | 1,890 | 2,020 | 2,149 | 2,278 | 2,407 | 2,537 |
| | ft. in | 6' 2" | 6' 7" | 7' 0" | 7' 5" | 7' 10" | 8' 3" |
| Min Lift - Hook Height (26, 27, 28, 29, 30, 31) | mm | (2,868) | (3,144) | (3,420) | (3,696) | (3,972) | (4,248) |
| | ft. in | -9' 7" | -10' 8" | -11' 9" | -12' 10" | -13' 11" | -13' 0" |
| Static Tipping Load, Straight | kg | 9,360 | 8,869 | 8,426 | 8,024 | 7,659 | 7,324 |
| | lb | 20,629 | 19,547 | 18,571 | 17,686 | 16,880 | 16,142 |
| Static Tipping Load, Articulated | kg | 8,245 | 7,812 | 7,422 | 7,068 | 6,745 | 6,450 |
| | lb | 18,172 | 17,218 | 16,358 | 15,577 | 14,866 | 14,215 |
| Operating Weight | kg | 24,285 | 24,285 | 24,285 | 24,285 | 24,285 | 24,285 |
| | lb | 53,525 | 53,525 | 53,525 | 53,525 | 53,525 | 53,525 |



**Payload Capacity (kg)
(Calculated Load at CG Point)**



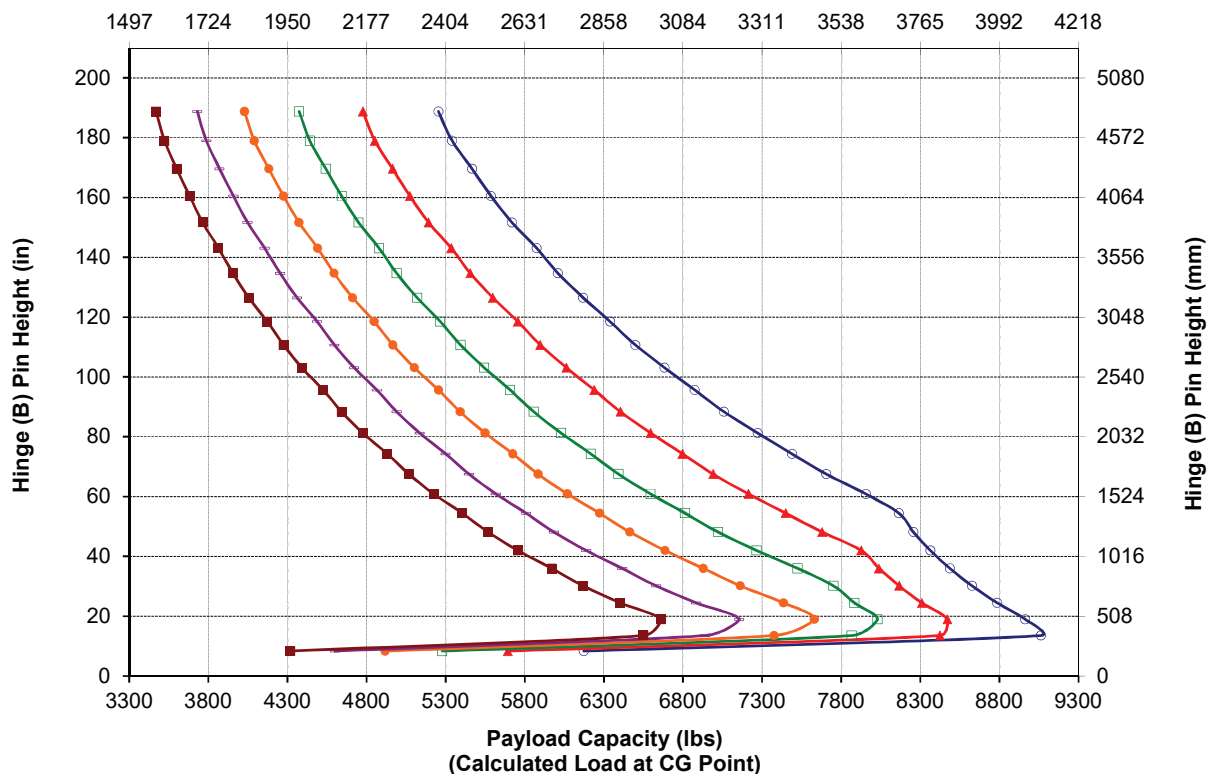
972M XE Wheel Loader Specifications

Material Handling Arm – High Lift Fusion

| MHA Specifications | Retracted | Extension 1 | Extension 2 | Extension 3 | Extension 4 | Extended |
|---|------------------------------|-----------------------------|------------------------------|------------------------------|------------------------------|------------------------------|
| Max Lift - Hook Reach (1, 2, 3, 4, 5, 6) | mm 1,276 ft, in 4' 2" | mm 1,339 ft, in 4' 4" | mm 1,402 ft, in 4' 7" | mm 1,465 ft, in 4' 9" | mm 1,528 ft, in 5' 0" | mm 1,592 ft, in 5' 2" |
| Max Lift - Hook Height (7, 8, 9, 10, 11, 12) | mm 7,966 ft, in 26' 1" | mm 8,264 ft, in 27' 1" | mm 8,563 ft, in 28' 1" | mm 8,861 ft, in 29' 0" | mm 9,159 ft, in 30' 0" | mm 9,457 ft, in 31' 0" |
| Level - Hook Reach (13, 14, 15, 16, 17, 18) | mm 4,960 ft, in 16' 3" | mm 5,265 ft, in 17' 3" | mm 5,570 ft, in 18' 3" | mm 5,874 ft, in 19' 3" | mm 6,179 ft, in 20' 3" | mm 6,484 ft, in 21' 3" |
| Level - Hook Height (19) | mm 1,928 ft, in 6' 3.8" | mm 1,928 ft, in 6' 3.8" | mm 1,928 ft, in 6' 3.8" | mm 1,928 ft, in 6' 3.8" | mm 1,928 ft, in 6' 3.8" | mm 1,928 ft, in 6' 3.8" |
| Min Lift - Hook Reach (20, 21, 22, 23, 24, 25) | mm (410) ft, in -1' 7" | mm (526) ft, in -1' 3" | mm (642) ft, in -2' 10" | mm (758) ft, in -2' 6" | mm (874) ft, in -2' 1" | mm (990) ft, in -3' 9" |
| Min Lift - Hook Height (26, 27, 28, 29, 30, 31) | mm (2,746) ft, in -9' 11" | mm (3,028) ft, in -9' 0" | mm (3,310) ft, in -10' 1" | mm (3,592) ft, in -11' 2" | mm (3,873) ft, in -12' 3" | mm (4,155) ft, in -13' 4" |
| Static Tipping Load, Straight | kg 8,224 lb 18,127 | kg 7,811 lb 17,215 | kg 7,436 lb 16,390 | kg 7,095 lb 15,638 | kg 6,783 lb 14,950 | kg 6,497 lb 14,319 |
| Static Tipping Load, Articulated | kg 7,238 lb 15,952 | kg 6,873 lb 15,149 | kg 6,543 lb 14,421 | kg 6,242 lb 13,758 | kg 5,967 lb 13,152 | kg 5,715 lb 12,596 |
| Operating Weight | kg 23,788 lb 52,429 | kg 23,788 lb 52,429 | kg 23,788 lb 52,429 | kg 23,788 lb 52,429 | kg 23,788 lb 52,429 | kg 23,788 lb 52,429 |



Payload Capacity (kg)
(Calculated Load at CG Point)



972M XE Wheel Loader Standard and Optional Equipment

Standard and Optional Equipment

Standard and optional equipment may vary. Consult your Cat dealer for details.

| | Standard | Optional | | Standard | Optional |
|--|----------|----------|---|----------|----------|
| POWER TRAIN | | | OPERATOR ENVIRONMENT | | |
| Axles, ecology drains | ✓ | | Air conditioner, heater, and defroster (auto temp and fan) | ✓ | |
| Axles, manually actuated differential lock front axle, open differential rear axle | ✓ | | Beverage holders (2) with storage compartment for cell phone/MP3 player | ✓ | |
| Axles – automatic front/rear differential locks, axle oil cooler, extreme temperature seals, seal guards | | ✓ | Bucket/work tool function lockout | ✓ | |
| Brake wear indicators | ✓ | | Cab air filter | ✓ | |
| Brakes, full hydraulic enclosed wet-disc with modulated neutralizer and integrated retarding | ✓ | | Cab, pressurized and sound suppressed (ROPS/FOPS) | ✓ | |
| Cat Clean Emissions Module (CEM) with Diesel Particulate Filter (DPF) and Diesel Exhaust Fluid (DEF) tank and pump | ✓ | | Cab tie-off | ✓ | |
| Engine, Cat C9.3 – meets U.S. EPA Tier 4 Final/EU Stage V emission standards | ✓ | | Coat hook (2) | ✓ | |
| Fan, radiator, electronically controlled, hydraulically driven, temperature sensing, on demand | ✓ | | Cover, HVAC metallic | | ✓ |
| Fan, VPF (variable pitch fan), automatic and manual control | | ✓ | Door, remote opening system | | ✓ |
| Fuel priming pump (electric) | ✓ | | EH controls, SAL (single axis lever) lift and tilt function | ✓ | |
| Fuel/water separator | ✓ | | EH controls, joystick lift and tilt – additional integrated roller switches for 3 rd and 4 th functions | | ✓ |
| Parking brake, disc and caliper | ✓ | | EH controls, SAL 3 rd function – additional roller switch for 4 th function | | ✓ |
| Precleaner, engine air intake | ✓ | | EH parking brake | ✓ | |
| Secondary steering | ✓ | | Ergonomic cab access ladders and handrails | ✓ | |
| Radiator, high debris, wide fin spacing | ✓ | | Filter, carbon fresh air | | ✓ |
| Right pedal lock, maximum rimpull control and machine speed limit in the cab | ✓ | | Horn, electric | ✓ | |
| Transmission, Cat continuously variable | ✓ | | Light, two dome (cab) | ✓ | |
| CAT TECHNOLOGY | | | Mirrors, heated rearview external with integrated spot mirrors | | ✓ |
| Detect technologies: | | | Mirrors, rearview external with integrated spot mirrors | ✓ | |
| Rear vision camera | ✓ | | Multi-function 18 cm color LCD touch-screen display for rear vision camera image display (reverse travel activated) and machine status, setting and health parameters | ✓ | |
| Cat rear object detection | | ✓ | Post mounted membrane 16 switch keypad | ✓ | |
| Link technologies: | | | Precleaner, HVAC | | ✓ |
| Product Link | ✓ | | Precleaner, HVAC (RESPA) | | ✓ |
| VIMS™ | | ✓ | Radio, AM/FM/CD/USB/MP3 Bluetooth® | | ✓ |
| Payload technologies: Advanced Productivity subscription, Cat Production Measurement 2.0, Printer, Aggregate Autodig | | ✓ | Radio, CB ready | | ✓ |
| Machine security system | | ✓ | Radio ready (entertainment) includes antenna, speakers and converter (12V, 10-amp) | ✓ | |
| | | | Receptacles (2), 12V | ✓ | |

(continued on next page)

972M XE Wheel Loader Standard and Optional Equipment

Standard and Optional Equipment *(continued)*

Standard and optional equipment may vary. Consult your Cat dealer for details.

| | Standard | Optional | | Standard | Optional |
|--|----------|----------|--|----------|----------|
| OPERATOR ENVIRONMENT <i>(continued)</i> | | | ELECTRICAL AND LIGHTING <i>(continued)</i> | | |
| Roof, metallic | | ✓ | Main disconnect switch | ✓ | |
| Seat, Cat Comfort (cloth) air suspension | ✓ | | Receptacle start (cables not included) | ✓ | |
| Seat belt, 51 mm (2 in) retractable, with indicator | ✓ | | Secondary steering | ✓ | |
| Seat belt, 4 point harness, with indicator | | ✓ | Speed limiter – 20 km/h | | ✓ |
| Seat, heated air suspension | | ✓ | Starter, electric, heavy duty | ✓ | |
| Steering, EH joystick, speed sensing with force feedback | ✓ | | Starting and charging system (24V) | ✓ | |
| Sun visor, front | ✓ | | FLUIDS | | |
| Sun visor, rear | | ✓ | Biodegradable oil, Cat HYDO™ | | ✓ |
| Viscous mounts | ✓ | | Premixed extended life coolant with freeze protection to -34°C (-29°F) | ✓ | |
| Wet-arm wipers/washers front and rear, intermittent front wiper | ✓ | | Premixed extended life coolant with freeze protection to -50°C (-58°F) | | ✓ |
| Windows, rubber mounted | | ✓ | HYDRAULICS | | |
| Window, sliding (left and right sides) | ✓ | | Autolube | | ✓ |
| Windows, with front guard | | ✓ | Couplings, Cat O-ring face seal | ✓ | |
| Windows, with heavy duty front guard | | ✓ | Hoses, Cat XT™ | ✓ | |
| Windows, with full guards front, rear and sides | | ✓ | Hydraulic oil cooler (swing out) | ✓ | |
| ELECTRICAL AND LIGHTING | | | Hydraulic system, load sensing | ✓ | |
| Alarm, back-up | ✓ | | Oil sampling valves | ✓ | |
| Alternator, 145-amp brushed | ✓ | | 3 rd function with Ride Control | | ✓ |
| Auxiliary halogen cab-mounted work lights (four additional) or | | ✓ | 4 th function with Ride Control | | ✓ |
| HID cab-mounted work lights (four additional) | | ✓ | Remote diagnostic pressure taps | ✓ | |
| Batteries (2), maintenance free 1,400 CCA | ✓ | | Ride control, 2V | ✓ | |
| Emergency engine shutdown switch | ✓ | | Steering, load sensing | ✓ | |
| Ignition key; start/stop switch | ✓ | | LINKAGE | | |
| LED front and rear roading lights | | ✓ | Extended capacity | | ✓ |
| Lighting system: four halogen work lights (cab mounted), two halogen roading lights (with signals), two halogen rear vision lights (hood mounted), two rear LED position/stop/turn signal lights | ✓ | | High lift | | ✓ |
| | | | Kickout, lift and tilt, automatic (adjustable cab) | ✓ | |
| | | | Quick coupler ready | | ✓ |
| | | | Z-bar, cast crosstube/tilt lever | ✓ | |
| | | | STARTERS, BATTERIES, AND ALTERNATORS | | |
| | | | Cold start – 240V | | ✓ |
| | | | WORK TOOLS | | |
| | | | Forks, logging | | ✓ |
| | | | Forks, pallet | | ✓ |
| | | | Fusion quick coupler | | ✓ |
| | | | Material handling arms | | ✓ |
| | | | Performance Series buckets | | ✓ |
| | | | Snow products | | ✓ |
| | | | VCE quick coupler | | ✓ |

(continued on next page)

972M XE Wheel Loader Standard and Optional Equipment

Standard and Optional Equipment *(continued)*

Standard and optional equipment may vary. Consult your Cat dealer for details.

| | Standard | Optional | | Standard | Optional |
|---|----------|----------|---|----------|----------|
| COMPUTERIZED MONITORING SYSTEM | | | OTHER STANDARD AND OPTIONAL EQUIPMENT | | |
| With following gauges: | ✓ | | Auto idle shutdown | ✓ | |
| Speedometer/tachometer | | | Cat Autolube System | | ✓ |
| Digital gear range indicator | | | Ecology drains for engine, transmission, and hydraulics | ✓ | |
| Diesel Exhaust Fluid (DEF) level | | | Ether aid ready | ✓ | |
| Temperature: engine coolant, hydraulic oil, transmission oil | | | Fenders, steel front with mud-flap/rear with extension | ✓ | |
| Fuel level | | | Fenders, roading | | ✓ |
| With following warning indicators: | ✓ | | Filters: fuel, engine air, engine oil, hydraulic oil, transmission | ✓ | |
| Regeneration | | | Fuel cooler | ✓ | |
| Temperature: axle oil, engine intake manifold | | | Grease zerks | ✓ | |
| Pressure: engine oil, fuel pressure hi/low, primary steering oil, service brake oil | | | Grill, airborne debris | ✓ | |
| Battery voltage hi/low | | | Guard, power train | | ✓ |
| Engine air filter restriction | | | Guard, rear radiator grill | | ✓ |
| Hydraulic oil filter restriction | | | Hitch, drawbar with pin | ✓ | |
| Hydraulic oil low | | | Hood, non-metallic power tilting | ✓ | |
| Parking brake | | | Oil change, high speed engine | | ✓ |
| DEF low level | | | Platform, window washing | ✓ | |
| Transmission filter bypass | | | Precleaner, turbine | | ✓ |
| | | | Precleaner, trash | | ✓ |
| | | | Precleaner rain cap | ✓ | |
| | | | Service centers (electrical and hydraulic) | ✓ | |
| | | | Sight gauges: engine coolant, hydraulic oil, and transmission oil level | ✓ | |
| | | | Toolbox | ✓ | |
| | | | Vandalism protection caplocks | ✓ | |
| | | | OTHER CONFIGURATIONS | | |
| | | | Aggregate handler | | ✓ |
| | | | Corrosion resistance | | ✓ |
| | | | Industrial and waste handler | | ✓ |



972M XE

Industrial & Waste

In the harsh scrap, waste, and recycling environment, your operation requires a wheel loader to process material as efficiently and safely as possible with minimal downtime.

Durability

- Robotically welded frame design provides rigid structures that absorb torsional loads.
- M Series articulating hitch design provides increased bearing force capacity.
- Heavy-duty transmissions and axles are designed to handle extreme conditions inherent with scrap handling applications.

Achieve Greater Productivity

- Continuously variable transmission delivers smooth shifts, fast acceleration and speed on grade.
- Deep system integration of the Cat continuously variable transmission, engine system, hydraulic system, transmission, and cooling system results in significantly increased performance and fuel efficiency.
- Lowering the rated engine speed and eliminating the torque converter results in speed that can be controlled independently of the engine speed.
- Easy-to-load Performance Series buckets improve material retention and reduce dig times, significantly improving productivity and fuel efficiency.
- Optional Cat Fusion quick coupler and 3rd/4th valve hydraulic functions allow for greater work tool and jobsite versatility.
- Automatic idle engine shutdown system significantly reduces idle time, overall operating hours, and fuel consumption.
- Standard and optional traction aids increase traction, diminish tire wear, and further reduce operating costs.
- Optional high lift linkage offers increased hinge pin height for improved stacking capability as well as easier load out of high side trucks and containers.
- Cat payload technologies provide accurate weighing* of the materials you are loading and hauling. Payload data is displayed in real-time to improve productivity and reduce overloading.

*Optional configurations and equipment may vary from region to region and require conformance to Caterpillar payload policy. Consult your dealer or Caterpillar representative for details. Not legal for trade.

Safety Features

- Cab access with wide door and stair-like steps adds solid stability.
- Floor-to-ceiling windshield, large mirrors with integrated spot mirrors, and rear vision camera provide industry-leading all-around visibility.
- Rear vision camera enhances visibility behind the machine, helping you work safely and confidently.

Easy, Comfortable Operator Environment

- Sound-suppression, seals, and viscous cab mounts decrease noise and vibration for a quieter work environment.
- The seat-mounted electro-hydraulic joystick steering system provides precision control and dramatically reduces arm fatigue, resulting in excellent comfort and accuracy.
- Ergonomic controls are easy to use, intuitive, and user-friendly.
- Touchscreen multi-function color display keeps operators focused.
- Inclined steps and convenient grab handles ease accessibility to the operating space.

Reduced Maintenance Time and Costs

- One-piece tilting hood makes engine access fast and easy.
- Electrical service centers enhance convenience and accessibility.
- Easy access to fuel fill and daily maintenance points means less servicing time is required.
- Extended service intervals, including:
 - Engine oil and engine oil filter change interval up to 1,000 hours
 - Hydraulic filter change interval up to 1,000 hours
 - Transmission oil change interval up to 2,000 hours
- Remote flash support.
- Longer tire life with on-the-go traction aids.
- Optional integrated Cat autolube system provides full lube system monitoring and diagnostic test visibility.
- Integrated window cleaning platform with tie-off point allows easy access to the front of the machine.

972M XE Industrial & Waste Specifications

Engine

| | | |
|--------------------------------|----------|---------------------|
| Engine Model | Cat C9.3 | |
| Maximum Net Power (1,600 rpm) | | |
| SAE J1349 | 232 kW | 311 hp |
| ISO 9249 | 232 kW | 311 hp |
| Peak Gross Torque (1,200 rpm) | | |
| SAE J1995 | 1728 N·m | 1,275 lbf-ft |
| ISO 14396 | 1708 N·m | 1,260 lbf-ft |
| Maximum Net Torque (1,200 rpm) | 1618 N·m | 1,193 lbf-ft |
| Displacement | 9.3 L | 568 in ³ |

- Cat engine with ACERT Technology – meets U.S. EPA Tier 4 Final/ EU Stage V emission standards.
- The power ratings apply at the stated speed when tested under the reference conditions for the specified standards.
- The net power advertised is the power available at the flywheel when the engine is equipped with fan running up to maximum speed, alternator, air cleaner, and aftertreatment.

Brakes

| | |
|--------|-------------------------------------|
| Brakes | Brakes meet ISO 3450:2011 standards |
|--------|-------------------------------------|

Transmission Virtual Gears

| | | |
|-----------|-----------|----------|
| Forward 1 | 6.7 km/h | 4.2 mph |
| Forward 2 | 12.6 km/h | 7.8 mph |
| Forward 3 | 22.1 km/h | 13.7 mph |
| Forward 4 | 39.5 km/h | 24.5 mph |
| Reverse 1 | 6.7 km/h | 4.2 mph |
| Reverse 2 | 12.6 km/h | 7.8 mph |
| Reverse 3 | 28.0 km/h | 17.4 mph |

- Maximum travel speed in standard vehicle with empty bucket and standard L3 tires with 826 mm roll radius.

Hydraulic System

| | | |
|--|------------------------------|-------------|
| Implement Pump Type | Variable Displacement Piston | |
| Implement System | | |
| Maximum Pump Output (1,600 rpm*) | 385 L/min | 102 gal/min |
| Maximum Operating Pressure | 31 000 kPa | 4,496 psi |
| Maximum Flow – Optional 3 rd /4 th Function | 240 L/min | 63 gal/min |
| Maximum Pressure – Optional 3 rd /4 th Function | 21 780 kPa | 3,159 psi |
| Hydraulic Cycle Time with Rated Payload | | |
| Raise from Carry Position | 6.1 Sec. | |
| Dump, at Maximum Raise | 1.5 Sec. | |
| Lower, Empty, Float Down | 3.1 Sec. | |
| Total | 10.7 Sec. | |

*Engine speed.

972M XE Industrial & Waste Specifications

Axles

| | |
|------------------------------------|------------------------------|
| Front | Fixed |
| Rear | Oscillating ± 13 degrees |
| Maximum Single-Wheel Rise and Fall | 502 mm 19.5 in |

Cab

| | |
|-----------|--|
| ROPS/FOPS | ROPS/FOPS meet ISO 3471:2008 and ISO 3449:2005 Level II standards |
|-----------|--|

Sound

The sound values indicated below are for specific operating conditions only. Machine and operator sound levels will vary at different engine and/or cooling fan speeds. Hearing protection may be needed when the machine is operated with a cabin that is not properly maintained, or when the doors and/or windows are open for extended periods or in a noisy environment.

With Cooling Fan Speed at Maximum Value:

| | |
|---|-----------|
| Operator sound pressure level (ISO 6396:2008) | 67 dB(A) |
| Exterior sound power level (ISO 6395:2008) | 107 dB(A) |
| Exterior sound pressure level (SAE J88:2013) | 76 dB(A)* |

*Distance of 15 m (49.2 ft), moving forward in second gear ratio.

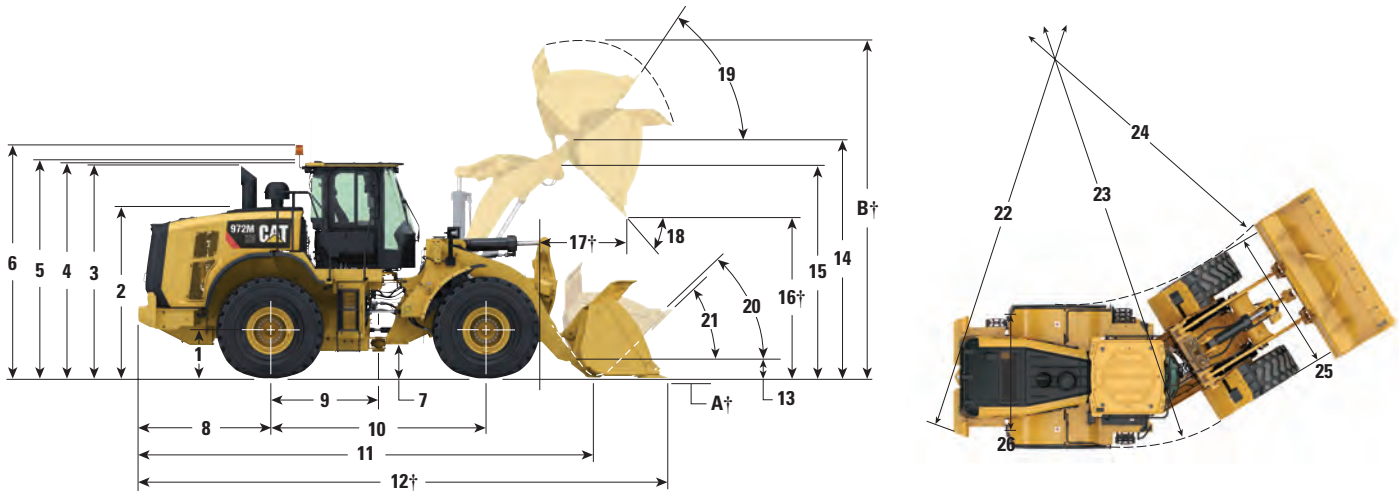
Service Refill Capacities

| | | |
|--|---------|----------|
| Fuel Tank | 302.0 L | 79.8 gal |
| DEF Tank | 16.8 L | 4.4 gal |
| Cooling System | 71.6 L | 19.0 gal |
| Crankcase | 24.5 L | 6.5 gal |
| Transmission | 63.0 L | 16.6 gal |
| Differentials and Final Drives – Front | 57.0 L | 15.1 gal |
| Differentials and Final Drives – Rear | 57.0 L | 15.1 gal |
| Hydraulic Tank | 125.0 L | 33.0 gal |

972M XE Industrial & Waste Specifications

Dimensions

All dimensions are approximate.



| | Standard Lift | | High Lift | |
|---|---------------|--------|--------------|--------|
| 1 Height to Axle Centerline | 835 mm | 2'9" | 835 mm | 2'9" |
| 2 Height to Top of Hood | 2854 mm | 9'4" | 2854 mm | 9'4" |
| 3 Height to Top of Exhaust Pipe | 3558 mm | 11'8" | 3558 mm | 11'8" |
| 4 Height to Top of ROPS | 3623 mm | 11'11" | 3623 mm | 11'11" |
| 5 Height to Top of Product Link Antenna | 3672 mm | 12'1" | 3672 mm | 12'1" |
| 6 Height to Top of Warning Beacon | 3895 mm | 12'9" | 3895 mm | 12'9" |
| 7 Ground Clearance | 470 mm | 1'7" | 470 mm | 1'7" |
| 8 Center Line of Rear Axle to Edge of Counterweight | 2500 mm | 8'2" | 2500 mm | 8'2" |
| 9 Center Line of Rear Axle to Hitch | 1775 mm | 5'10" | 1775 mm | 5'10" |
| 10 Wheelbase | 3550 mm | 11'8" | 3550 mm | 11'8" |
| 11 Overall Length (without bucket) | 9384 mm | 30'10" | 9720 mm | 31'11" |
| 12 Shipping Length (with bucket level on ground)*† | 9060 mm | 29'9" | 9395 mm | 30'10" |
| 13 Hinge Pin Height at Carry Height | 716 mm | 2'4" | 814 mm | 2'8" |
| 14 Hinge Pin Height at Maximum Lift | 4494 mm | 14'9" | 4829 mm | 15'10" |
| 15 Lift Arm Clearance at Maximum Lift | 3879 mm | 12'8" | 4176 mm | 13'8" |
| 16 Dump Clearance at Maximum Lift and 45° Discharge*† | 2892 mm | 9'5" | 3227 mm | 10'7" |
| 17 Reach at Maximum Lift and 45° Discharge*† | 1478 mm | 4'10" | 1501 mm | 4'11" |
| 18 Dump Angle at Maximum Lift and Dump (on stops)* | 44.1 degrees | | 44.1 degrees | |
| 19 Rack Back at Maximum Lift* | 56 degrees | | 71 degrees | |
| 20 Rack Back at Carry Height* | 50 degrees | | 49 degrees | |
| 21 Rack Back at Ground* | 41 degrees | | 39 degrees | |
| 22 Clearance Circle (radius) to Counterweight | 6872 mm | 22'7" | 6872 mm | 22'7" |
| 23 Clearance Circle (radius) to Outside of Tires | 6717 mm | 22'1" | 6717 mm | 22'1" |
| 24 Clearance Circle (radius) to Inside of Tires | 3898 mm | 12'10" | 3898 mm | 12'10" |
| 25 Width over Tires – Maximum (unloaded) | 2959 mm | 9'9" | 2959 mm | 9'9" |
| Width over Tires – Maximum (loaded) | 2968 mm | 9'9" | 2968 mm | 9'9" |
| 26 Tread Width | 2230 mm | 7'4" | 2230 mm | 7'4" |

*With 7.4 m³ (9.75 yd³) pin-on waste bucket with steel bolt-on cutting edges (see Operating Specifications for other Buckets) and rear guard counterweight.

†Dimensions are listed in Operating Specification charts.

All height and tire related dimensions are with Brawler 26.5-25 HPS Solidflex Smooth tires (see Tire Option charts for other tires).

"Width over Tires" dimensions are over the bulge and include growth.

972M XE Industrial & Waste Specifications

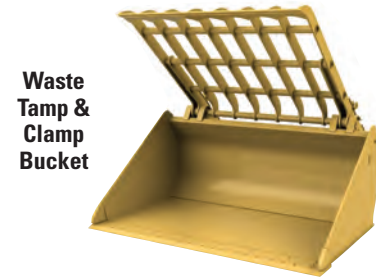
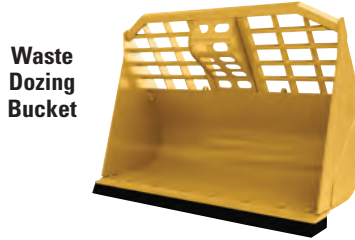
Tire Options for Scrap and Waste

| Tire Brand | Brawler HPS | Brawler HPS | Michelin | Bridgestone | Yokohama | Titan |
|--|------------------|--------------------|-----------------------|-----------------------|-----------------------|-----------------------|
| Tire Size | 26.5-25 | 26.5-25 | 26.5R25 | 26.5R25 | 26.5R25 | 26.5R25 |
| Tread Type | — | — | L-3 | L-3 | L-3 | L-3 |
| Tread Pattern | Solidflex Smooth | Solidflex Traction | XHA2 | VJT | RB31 | STL3 |
| Width over Tires – Maximum (empty)* | 2959 mm 9'8" | 2959 mm 9'8" | 2990 mm 9'10" | 2982 mm 9'9" | 2955 mm 9'8" | 2968 mm 9'9" |
| Width over Tires – Maximum (loaded)* | 2968 mm 9'9" | 2968 mm 9'9" | 3012 mm 9'11" | 3016 mm 9'11" | 2981 mm 9'9" | 3009 mm 9'10" |
| Change in Vertical Dimensions (average of front and rear) | 0 mm 0" | 0 mm 0" | -36 mm -1" | -22 mm -1" | -24 mm -1" | -22 mm -1" |
| Change in Horizontal Reach | 0 mm 0" | 0 mm 0" | -9 mm 0" | -11 mm 0" | -8 mm 0" | -9 mm 0" |
| Change in Clearance Circle (radius) to Outside of Tires | 0 mm 0" | 0 mm 0" | 45 mm 2" | 48 mm 2" | 14 mm 1" | 42 mm 2" |
| Change in Clearance Circle (radius) to Inside of Tires | 0 mm 0" | 0 mm 0" | -45 mm -2" | -48 mm -2" | -14 mm -1" | -42 mm -2" |
| Change in Operating Weight (without Ballast) | 0 kg 0 lb | -222 kg -489 lb | -4464 kg -9,839 lb | -4300 kg -9,477 lb | -4188 kg -9,230 lb | -4344 kg -9,574 lb |
| Change in Static Tipping Load – Straight | 0 kg 0 lb | -149 kg -329 lb | -3004 kg -6,620 lb | -2893 kg -6,377 lb | -2818 kg -6,211 lb | -2923 kg -6,443 lb |
| Change in Static Tipping Load – Articulated | 0 kg 0 lb | -133 kg -293 lb | -2674 kg -5,893 lb | -2576 kg -5,677 lb | -2509 kg -5,529 lb | -2602 kg -5,735 lb |

*Width over tire bulge and includes tire growth.

972M XE Industrial & Waste Specifications

Operating Specifications – Waste Buckets



| Bucket Type | | Pin-On Load & Carry | Pin-On Dozing | Pin-On Tamp & Clamp | |
|--|-----------------|-----------------------------|-----------------------------|-----------------------------|------------------|
| Edge Type | | Steel Bolt-On Cutting Edges | Steel Bolt-On Cutting Edges | Steel Bolt-On Cutting Edges | High Lift Delta* |
| Capacity – Rated | m ³ | 7.40 | 6.50 | 5.00 | — |
| | yd ³ | 9.75 | 8.50 | 6.50 | — |
| Capacity – Rated at 110% Fill Factor | m ³ | 8.10 | 7.20 | 5.50 | — |
| | yd ³ | 10.50 | 9.50 | 7.25 | — |
| Width | mm | 3357 | 3357 | 3357 | — |
| | ft/in | 11'0" | 11'0" | 11'0" | — |
| 16 † Dump Clearance at Maximum Lift and 45° Discharge | mm | 2892 | 3172 | 2678 | 336 |
| | ft/in | 9'5" | 10'4" | 8'9" | 1'1" |
| 17 † Reach at Maximum Lift and 45° Discharge | mm | 1478 | 1198 | 1692 | 23 |
| | ft/in | 4'10" | 3'11" | 5'6" | 0" |
| Reach at Level Lift Arm and Bucket Level | mm | 3329 | 2932 | 3631 | 274 |
| | ft/in | 10'11" | 9'7" | 11'10" | 10" |
| 12 † Overall Length | mm | 9299 | 8902 | 9601 | 421 |
| | ft/in | 30'7" | 29'3" | 31'6" | 1'4" |
| A † Overall Height with Bucket at Maximum Lift | mm | 6598 | 6957 | 5738 | 336 |
| | ft/in | 21'8" | 22'10" | 18'10" | 1'1" |
| Loader Clearance Circle Radius with Bucket at Carry Position | mm | 7767 | 7659 | 7853 | 179 |
| | ft/in | 25'6" | 25'2" | 25'10" | 7" |
| Static Tipping Load, Straight (Rigid Tire) | kg | 18 342 | 20 092 | 15 994 | 1366 |
| | lb | 40,427 | 44,283 | 35,251 | 3,010 |
| Static Tipping Load, Articulated (Rigid Tire) | kg | 16 208 | 17 804 | 14 009 | 1258 |
| | lb | 35,723 | 39,240 | 30,875 | 2,772 |
| Breakout Force | kN | 165 | 219 | 135 | 4 |
| | lbf | 37,205 | 49,418 | 30,552 | 898 |
| Operating Weight | kg | 29 175 | 28 968 | 30 198 | 85 |
| | lb | 64,302 | 63,846 | 66,557 | 187 |

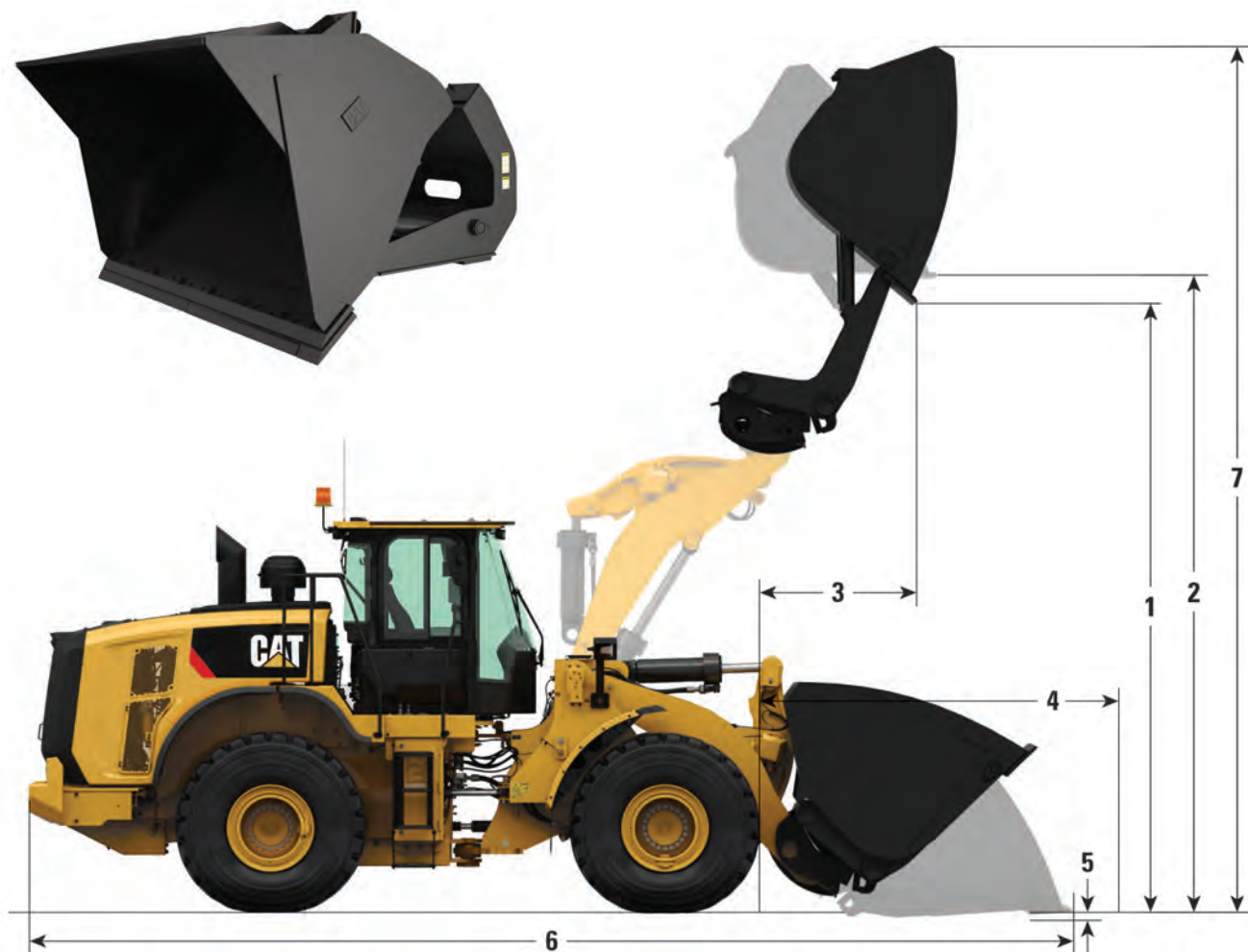
†Illustration shown with Dimension charts.

*Maximum values.

Static tipping loads and operating weights shown are based on machine configuration with Brawler HPS Solidflex Smooth tires, full fluids, operator, standard lift linkage, standard Waste Arrangement guarding, front window guard, rear guard counterweight, light guards, auto diff lock axles (front/rear) and two valve hydraulics.

972M XE Industrial & Waste Specifications

Waste High Dump Buckets



Bucket Key Features

- Waste High Dump bucket increases dump height 2.2 m (7' 3") for largest size available on 972M XE
- Designed for waste transfer and recycling depots
- Wide bucket tilt cylinders enable material to flow easily with minimal carry back
- Four-piece steel cutting edge
- Requires 3rd valve hydraulics

972M XE Industrial & Waste Specifications

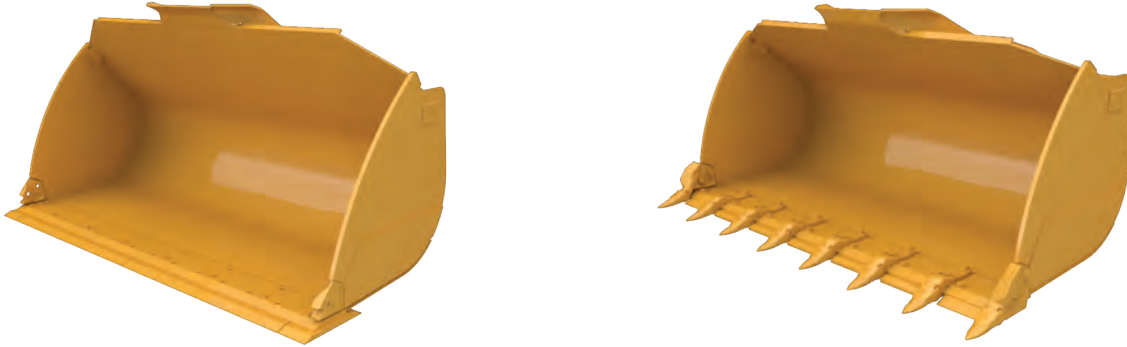
Waste High Dump Bucket Chart

| Package | Standard | |
|---|-----------------------------|--------|
| Bucket Type | Fusion | |
| Edge Type | Steel Bolt-On Cutting Edges | |
| Capacity – Rated | m ³ | 5.40 |
| | yd ³ | 7.00 |
| Capacity – Rated at 110% Fill Factor | m ³ | 5.90 |
| | yd ³ | 7.75 |
| Width | mm | 3059 |
| | ft/in | 10' |
| 1 Dump Clearance at Max Lift, Max Rack, Bucket Rolled out to 45° Discharge | mm | 5001 |
| | ft/in | 16'4" |
| 2 Clearance at Max Lift, Max Rack, Bucket Rolled out to Level | mm | 5384 |
| | ft/in | 17'7" |
| 3 Reach at Max Lift, Max Rack, Bucket Rolled out to 45° Discharge | mm | 1656 |
| | ft/in | 5'5" |
| 4 Reach at Level Lift Arm and Bucket Level | mm | 3392 |
| | ft/in | 11'1" |
| 5 Digging Depth | mm | 79 |
| | ft/in | 3.1" |
| 6 Overall Length | mm | 9464 |
| | ft/in | 31'1" |
| 7 Overall Height with Bucket at Max Height and Max Rack | mm | — |
| | ft/in | — |
| Loader Clearance Circle Radius with Bucket at Carry Position | mm | 7656 |
| | ft/in | 25'2" |
| Static Tipping Load, Straight (Rigid Tire) | kg | 17763 |
| | lb | 39,151 |
| Static Tipping Load, Articulated (Rigid Tire) | kg | 15669 |
| | lb | 34,536 |
| Breakout Force | kN | 159 |
| | lbf | 35,909 |
| Operating Weight* | kg | 29413 |
| | lb | 64,826 |

*Static tipping loads and operating weights shown are based on machine configuration with Brawler HPS Solidflex Smooth tires, full fluids, operator, standard lift linkage, standard Waste Arrangement guarding, front window guard, rear guard counterweight, light guards, and auto diff lock axles (front/rear).

972M XE Industrial & Waste Specifications

Scrap Bucket Chart



| Package | | 972M XE Scrap | | | | | | | | | |
|--|-----------------|-----------------------------|---------|---------|---------|---------|-----------------------------|---------|---------|---------|---------|
| Bucket Type | | Pin On General Purpose | | | | | Fusion QC General Purpose | | | | |
| Edge Type | | Steel Bolt-On Cutting Edges | | | | | Steel Bolt-On Cutting Edges | | | | |
| Capacity – Rated | m ³ | 4.2 | 4.4 | 4.6 | 4.8 | 5.0 | 4.2 | 4.4 | 4.6 | 4.8 | 5.0 |
| | yd ³ | 5.50 | 5.75 | 6.00 | 6.25 | 6.50 | 5.50 | 5.75 | 6.00 | 6.25 | 6.50 |
| Capacity – Rated at 110% Fill Factor | m ³ | 4.6 | 4.8 | 5.1 | 5.3 | 5.5 | 4.6 | 4.8 | 5.1 | 5.3 | 5.5 |
| | yd ³ | 6.00 | 6.25 | 6.75 | 7.00 | 7.25 | 6.00 | 6.25 | 6.75 | 7.00 | 7.25 |
| Width | mm | 3220 | 3220 | 3220 | 3220 | 3220 | 3220 | 3220 | 3220 | 3220 | 3220 |
| | ft/in | 10' 6" | 10' 6" | 10' 6" | 10' 6" | 10' 6" | 10' 6" | 10' 6" | 10' 6" | 10' 6" | 10' 6" |
| Dump Clearance at Maximum Lift and 45° Discharge | mm | 3261 | 3265 | 3223 | 3190 | 3173 | 3231 | 3236 | 3193 | 3166 | 3142 |
| | ft/in | 10' 8" | 10' 8" | 10' 6" | 10' 5" | 10' 4" | 10' 7" | 10' 7" | 10' 5" | 10' 4" | 10' 3" |
| Reach at Maximum Lift and 45° Discharge | mm | 1305 | 1300 | 1336 | 1365 | 1380 | 1340 | 1335 | 1370 | 1392 | 1413 |
| | ft/in | 4' 3" | 4' 3" | 4' 4" | 4' 5" | 4' 6" | 4' 4" | 4' 4" | 4' 5" | 4' 6" | 4' 7" |
| Reach at Level Lift Arm and Bucket Level | mm | 2928 | 2921 | 2977 | 3022 | 3045 | 2973 | 2966 | 3023 | 3058 | 3090 |
| | ft/in | 9' 7" | 9' 7" | 9' 9" | 9' 10" | 9' 11" | 9' 9" | 9' 8" | 9' 11" | 10' 0" | 10' 1" |
| Digging Depth | mm | 67 | 67 | 67 | 67 | 67 | 67 | 67 | 67 | 67 | 67 |
| | ft/in | 2.6" | 2.6" | 2.6" | 2.6" | 2.6" | 2.6" | 2.6" | 2.6" | 2.6" | 2.6" |
| Overall Length | mm | 8965 | 8957 | 9014 | 9059 | 9082 | 9010 | 9003 | 9060 | 9095 | 9127 |
| | ft/in | 29' 5" | 29' 5" | 29' 7" | 29' 9" | 29' 10" | 29' 7" | 29' 7" | 29' 9" | 29' 11" | 29' 12" |
| Overall Height with Bucket at Maximum Lift | mm | 5973 | 6266 | 6231 | 6067 | 6320 | 6072 | 6241 | 6247 | 6306 | 6332 |
| | ft/in | 19' 8" | 20' 7" | 20' 6" | 19' 11" | 20' 9" | 19' 12" | 20' 6" | 20' 6" | 20' 9" | 20' 10" |
| Loader Clearance Circle Radius with Bucket at Carry Position | mm | 7583 | 7581 | 7596 | 7608 | 7615 | 7592 | 7590 | 7606 | 7616 | 7625 |
| | ft/in | 24' 11" | 24' 11" | 24' 12" | 24' 12" | 24' 12" | 24' 11" | 24' 11" | 24' 12" | 24' 12" | 25' 1" |
| Static Tipping Load, Straight (Rigid Tire) | kg | 20 061 | 20 122 | 19 958 | 19 989 | 20 090 | 19 535 | 19 550 | 19 396 | 19 394 | 19 277 |
| | lb | 44,216 | 44,349 | 43,989 | 44,057 | 44,280 | 43,055 | 43,089 | 42,749 | 42,744 | 42,487 |
| Static Tipping Load, Articulated (Rigid Tire) | kg | 17 837 | 17 891 | 17 738 | 17 772 | 17 872 | 17 333 | 17 342 | 17 197 | 17 195 | 17 080 |
| | lb | 39,314 | 39,432 | 39,096 | 39,170 | 39,390 | 38,202 | 38,222 | 37,903 | 37,899 | 37,645 |
| Breakout Force | kN | 209 | 210 | 202 | 196 | 198 | 202 | 203 | 195 | 190 | 186 |
| | lbf | 47,157 | 47,386 | 45,451 | 44,045 | 44,605 | 45,584 | 45,757 | 43,911 | 42,868 | 41,852 |
| Operating Weight | kg | 28 380 | 28 386 | 28 441 | 28 369 | 28 482 | 28 757 | 28 798 | 28 857 | 28 852 | 28 943 |
| | lb | 62,549 | 62,561 | 62,682 | 62,524 | 62,773 | 63,379 | 63,471 | 63,601 | 63,590 | 63,789 |

Static tipping loads and operating weights shown are based on machine configuration with Brawler HPS Solidflex Smooth tires, full fluids, operator, standard lift linkage, standard Waste Arrangement guarding, front window guard, rear guard counterweight, light guards, and auto diff lock axles (front/rear).

972M XE Industrial & Waste Standard & Optional Equipment

Standard and Optional Equipment

Standard and optional equipment may vary. Consult your Cat dealer for details.

| | Standard | Optional | | Standard | Optional |
|--|----------|----------|---|----------|----------|
| POWER TRAIN | | | OPERATOR ENVIRONMENT | | |
| Axles, ecology drains | ✓ | | Air conditioner, heater, and defroster (auto temp and fan) | ✓ | |
| Axles, manually actuated differential lock front axle, open differential rear axle | ✓ | | Beverage holders (2) with storage compartment for cell phone/MP3 player | ✓ | |
| Axles – automatic front/rear differential locks, axle oil cooler, extreme temperature seals, seal guards | | ✓ | Bucket/work tool function lockout | ✓ | |
| Brake wear indicators | ✓ | | Cab air filter | ✓ | |
| Brakes, full hydraulic enclosed wet-disc with modulated neutralizer and integrated retarding | ✓ | | Cab, pressurized and sound suppressed (ROPS/FOPS) | ✓ | |
| Cat Clean Emissions Module (CEM) with Diesel Particulate Filter (DPF) and Diesel Exhaust Fluid (DEF) tank and pump | ✓ | | Cab tie-off | ✓ | |
| Engine, Cat C9.3 – meets U.S. EPA Tier 4 Final/EU Stage V emission standards | ✓ | | Coat hook (2) | ✓ | |
| Fan, radiator, electronically controlled, hydraulically driven, temperature sensing, on demand | ✓ | | Cover, HVAC metallic | | ✓ |
| Fan, VPF (variable pitch fan), automatic and manual control | | ✓ | Door, remote opening system | | ✓ |
| Fuel priming pump (electric) | ✓ | | EH controls, SAL (single axis lever) lift and tilt function | ✓ | |
| Fuel/water separator | ✓ | | EH controls, joystick lift and tilt – additional integrated roller switches for 3 rd and 4 th functions | | ✓ |
| Parking brake, disc and caliper | ✓ | | EH controls, SAL 3 rd function – additional roller switch for 4 th function | | ✓ |
| Precleaner, engine air intake | ✓ | | EH parking brake | ✓ | |
| Secondary steering | ✓ | | Ergonomic cab access ladders and handrails | ✓ | |
| Radiator, high debris, wide fin spacing | ✓ | | Filter, carbon fresh air | | ✓ |
| Right pedal lock, maximum rimpull control and machine speed limit in the cab | ✓ | | Horn, electric | ✓ | |
| Transmission, Cat continuously variable | ✓ | | Light, two dome (cab) | ✓ | |
| CAT TECHNOLOGY | | | Mirrors, heated rearview external with integrated spot mirrors | | ✓ |
| Detect technologies: | | | Mirrors, rearview external with integrated spot mirrors | ✓ | |
| Rear vision camera | ✓ | | Multi-function 18 cm color LCD touch-screen display for rear vision camera image display (reverse travel activated) and machine status, setting and health parameters | ✓ | |
| Cat rear object detection | | ✓ | Post mounted membrane 16 switch keypad | ✓ | |
| Link technologies: | | | Precleaner, HVAC | | ✓ |
| Product Link | ✓ | | Precleaner, HVAC (RESPA) | | ✓ |
| VIMS | | ✓ | Radio, AM/FM/CD/USB/MP3 Bluetooth® | | ✓ |
| Payload technologies: Advanced Productivity subscription, Cat Production Measurement 2.0, Printer, Aggregate Autodig | | ✓ | Radio, CB ready | | ✓ |
| Machine security system | | ✓ | Radio ready (entertainment) includes antenna, speakers and converter (12V, 10-amp) | ✓ | |
| | | | Receptacles (2), 12V | ✓ | |

(continued on next page)

972M XE Industrial & Waste Standard & Optional Equipment

Standard and Optional Equipment *(continued)*

Standard and optional equipment may vary. Consult your Cat dealer for details.

| | Standard | Optional | | Standard | Optional |
|--|----------|----------|--|----------|----------|
| OPERATOR ENVIRONMENT <i>(continued)</i> | | | ELECTRICAL AND LIGHTING <i>(continued)</i> | | |
| Roof, metallic | | ✓ | Main disconnect switch | ✓ | |
| Seat, Cat Comfort (cloth) air suspension | ✓ | | Receptacle start (cables not included) | ✓ | |
| Seat belt, 51 mm (2 in) retractable, with indicator | ✓ | | Secondary steering | ✓ | |
| Seat belt, 4 point harness, with indicator | | ✓ | Speed limiter – 20 km/h | | ✓ |
| Seat, heated air suspension | | ✓ | Starter, electric, heavy duty | ✓ | |
| Steering, EH joystick, speed sensing with force feedback | ✓ | | Starting and charging system (24V) | ✓ | |
| Sun visor, front | ✓ | | FLUIDS | | |
| Sun visor, rear | | ✓ | Biodegradable oil, Cat HYDO | | ✓ |
| Viscous mounts | ✓ | | Premixed extended life coolant with freeze protection to -34°C (-29°F) | ✓ | |
| Wet-arm wipers/washers front and rear, intermittent front wiper | ✓ | | Premixed extended life coolant with freeze protection to -50°C (-58°F) | | ✓ |
| Windows, rubber mounted | | ✓ | HYDRAULICS | | |
| Window, sliding (left and right sides) | ✓ | | Autolube | | ✓ |
| Windows, with front guard | | ✓ | Couplings, Cat O-ring face seal | ✓ | |
| Windows, with heavy duty front guard | | ✓ | Hoses, Cat XT | ✓ | |
| Windows, with full guards front, rear and sides | | ✓ | Hydraulic oil cooler (swing out) | ✓ | |
| ELECTRICAL AND LIGHTING | | | Hydraulic system, load sensing | ✓ | |
| Alarm, back-up | ✓ | | Oil sampling valves | ✓ | |
| Alternator, 145-amp brushed | ✓ | | 3 rd function with Ride Control | | ✓ |
| Auxiliary halogen cab-mounted work lights (four additional) or | | ✓ | 4 th function with Ride Control | | ✓ |
| HID cab-mounted work lights (four additional) | | ✓ | Remote diagnostic pressure taps | ✓ | |
| Batteries (2), maintenance free 1,400 CCA | ✓ | | Ride control, 2V | ✓ | |
| Emergency engine shutdown switch | ✓ | | Steering, load sensing | ✓ | |
| Ignition key; start/stop switch | ✓ | | LINKAGE | | |
| LED front and rear roading lights | | ✓ | Extended capacity | | ✓ |
| Lighting system: four halogen work lights (cab mounted), two halogen roading lights (with signals), two halogen rear vision lights (hood mounted), two rear LED position/stop/turn signal lights | ✓ | | High lift | | ✓ |
| | | | Kickout, lift and tilt, automatic (adjustable cab) | ✓ | |
| | | | Quick coupler ready | | ✓ |
| | | | Z-bar, cast crosstube/tilt lever | ✓ | |
| | | | STARTERS, BATTERIES, AND ALTERNATORS | | |
| | | | Cold start – 240V | | ✓ |
| | | | WORK TOOLS | | |
| | | | Forks, logging | | ✓ |
| | | | Forks, pallet | | ✓ |
| | | | Fusion quick coupler | | ✓ |
| | | | Material handling arms | | ✓ |
| | | | Performance Series buckets | | ✓ |
| | | | Snow products | | ✓ |
| | | | VCE quick coupler | | ✓ |

(continued on next page)

972M XE Industrial & Waste Standard & Optional Equipment

Standard and Optional Equipment *(continued)*

Standard and optional equipment may vary. Consult your Cat dealer for details.

| | Standard | Optional | | Standard | Optional |
|---|----------|----------|---|----------|----------|
| COMPUTERIZED MONITORING SYSTEM | | | OTHER STANDARD AND OPTIONAL EQUIPMENT | | |
| With following gauges: | ✓ | | Auto idle shutdown | ✓ | |
| Speedometer/tachometer | | | Cat Autolube System | | ✓ |
| Digital gear range indicator | | | Ecology drains for engine, transmission, and hydraulics | ✓ | |
| Diesel Exhaust Fluid (DEF) level | | | Ether aid ready | ✓ | |
| Temperature: engine coolant, hydraulic oil, transmission oil | | | Fenders, steel front with mud-flap/rear with extension | ✓ | |
| Fuel level | | | Fenders, roading | | ✓ |
| With following warning indicators: | ✓ | | Filters: fuel, engine air, engine oil, hydraulic oil, transmission | ✓ | |
| Regeneration | | | Fuel cooler | ✓ | |
| Temperature: axle oil, engine intake manifold | | | Grease zerks | ✓ | |
| Pressure: engine oil, fuel pressure hi/low, primary steering oil, service brake oil | | | Grill, airborne debris | ✓ | |
| Battery voltage hi/low | | | Guard, power train | | ✓ |
| Engine air filter restriction | | | Guard, rear radiator grill | | ✓ |
| Hydraulic oil filter restriction | | | Hitch, drawbar with pin | ✓ | |
| Hydraulic oil low | | | Hood, non-metallic power tilting | ✓ | |
| Parking brake | | | Oil change, high speed engine | | ✓ |
| DEF low level | | | Platform, window washing | ✓ | |
| Transmission filter bypass | | | Precleaner, turbine | | ✓ |
| | | | Precleaner, trash | | ✓ |
| | | | Precleaner rain cap | ✓ | |
| | | | Service centers (electrical and hydraulic) | ✓ | |
| | | | Sight gauges: engine coolant, hydraulic oil, and transmission oil level | ✓ | |
| | | | Toolbox | ✓ | |
| | | | Vandalism protection caplocks | ✓ | |
| | | | OTHER CONFIGURATIONS | | |
| | | | Aggregate handler | | ✓ |
| | | | Corrosion resistance | | ✓ |
| | | | Industrial and waste handler | | ✓ |

972M XE Industrial & Waste Standard & Optional Equipment

Standard and Optional Equipment (continued)

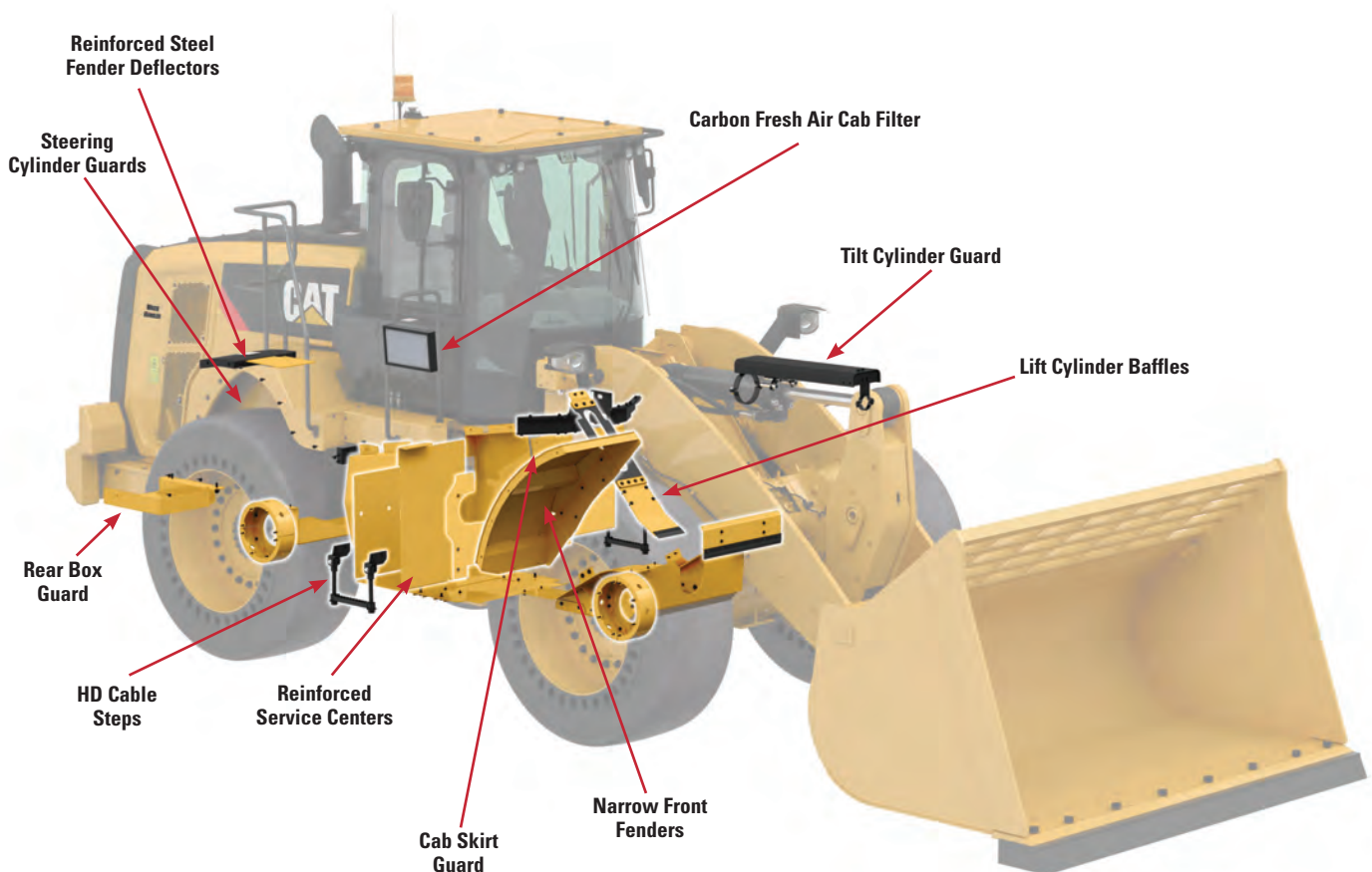
Standard

- Axle seal guards
- Steering cylinder guard
- Crankcase guard
- Power train guard
- Tilt cylinder guard
- Lower cab skirt
- Rear box reinforcement
- Reinforced service centers
- Heavy duty cable steps
- Lift cylinder baffles
- Narrow front fenders
- Steel reinforced rear fender deflectors
- Carbon fresh cab air filter
- Locking differential front axle
- Sound suppression cab

Optional

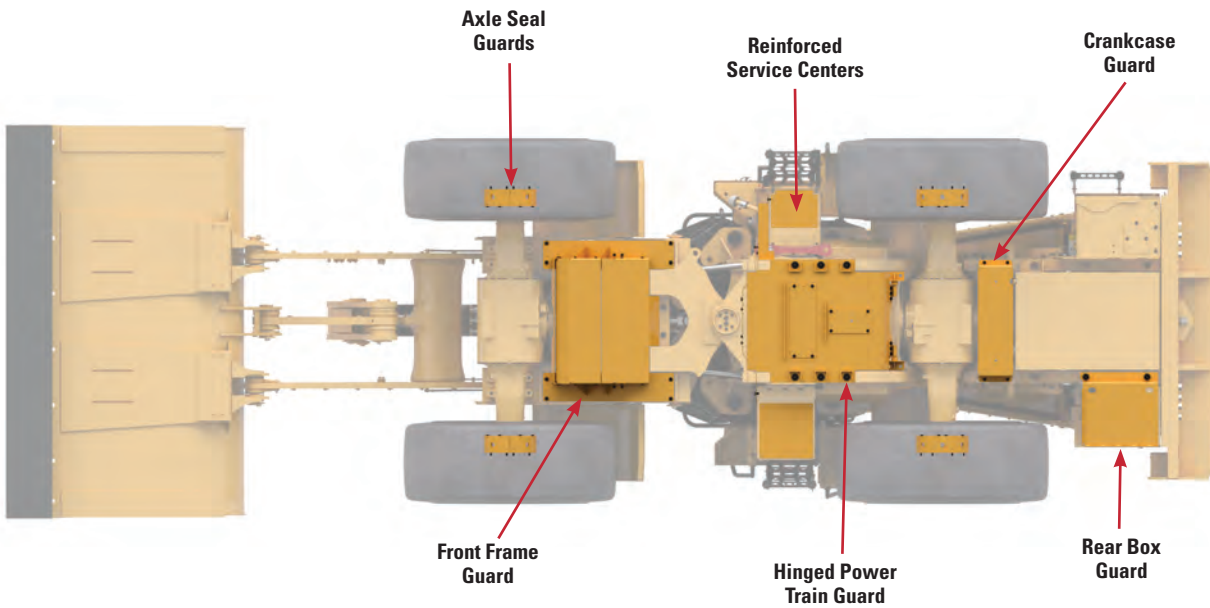
- High Lift linkage (additional 11" dump clearance)
- Auto locking differential front axle
- 3rd function hydraulics
- Premium LED lights
- Rubber mounted glass
- Windshield guard
- Joystick steering
- Deluxe seat with dynamic end dampening
- Joystick loader controls
- Powered and filtered cab precleaner
- High debris cooling coolers
- Variable pitch fan
- Brawler HPS Solid tires (traction or smooth)
- Turbine engine air precleaner with trash screen
- Autolube
- Cat Integrated Object Detection
- Light guards

Top Machine Guarding – Standard

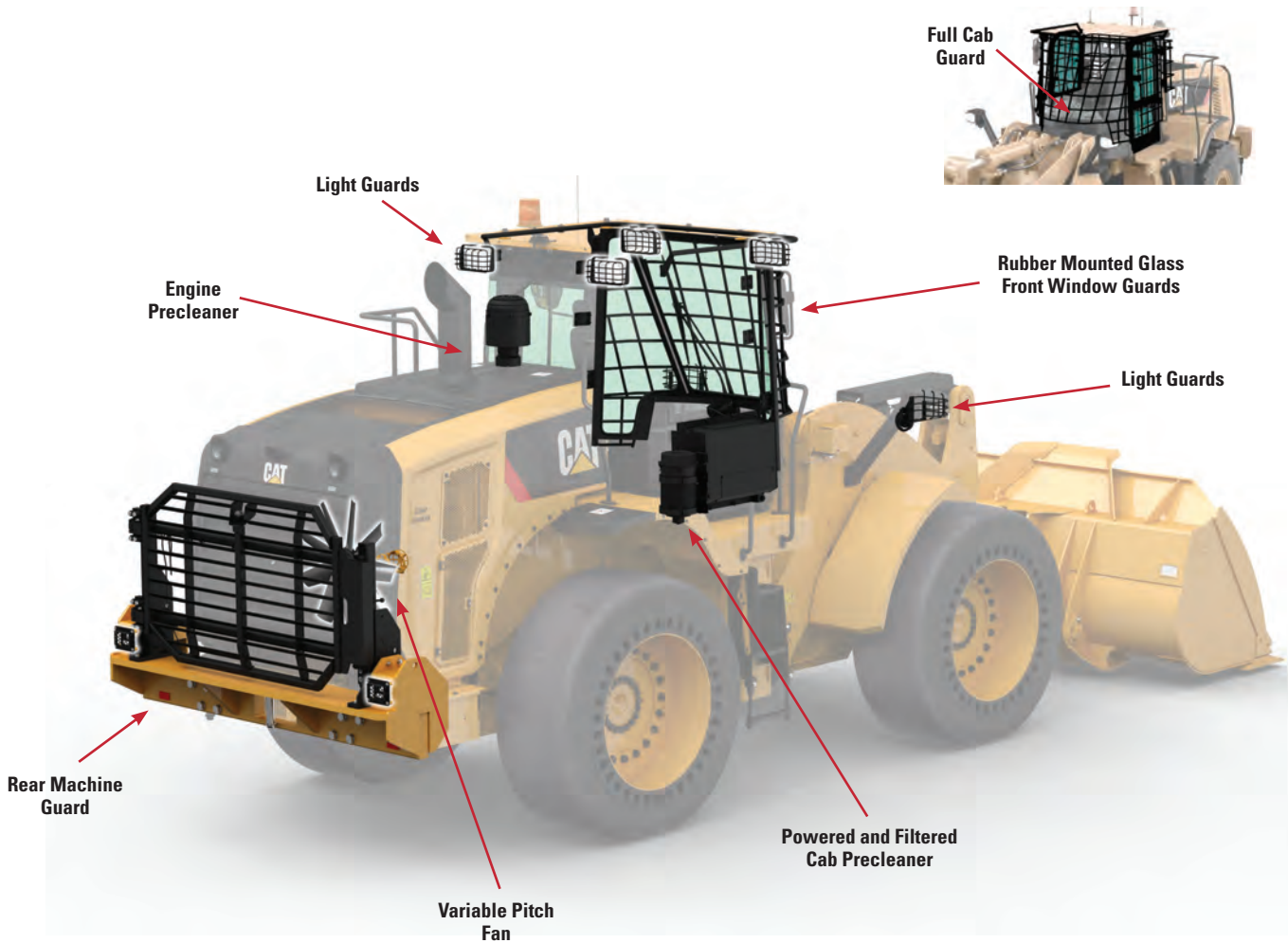


972M XE Industrial & Waste Standard & Optional Equipment

Bottom Machine Guarding – Standard



Optional Full Cab Guarding – Available



For more complete information on Cat products, dealer services, and industry solutions, visit us on the web at www.cat.com.

Materials and specifications are subject to change without notice. Featured machines in photos may include additional equipment. See your Cat dealer for available options.

© 2020 Caterpillar. All Rights Reserved. CAT, CATERPILLAR, LET'S DO THE WORK, their respective logos, Product Link, VIMS, XT, Fusion, ACERT, HYDO, "Caterpillar Yellow", the "Power Edge" trade dress as well as corporate and product identity used herein, are trademarks of Caterpillar and may not be used without permission.

AEXQ2437-02 (1-2020)
2019 Product Update
Global excluding EU

